

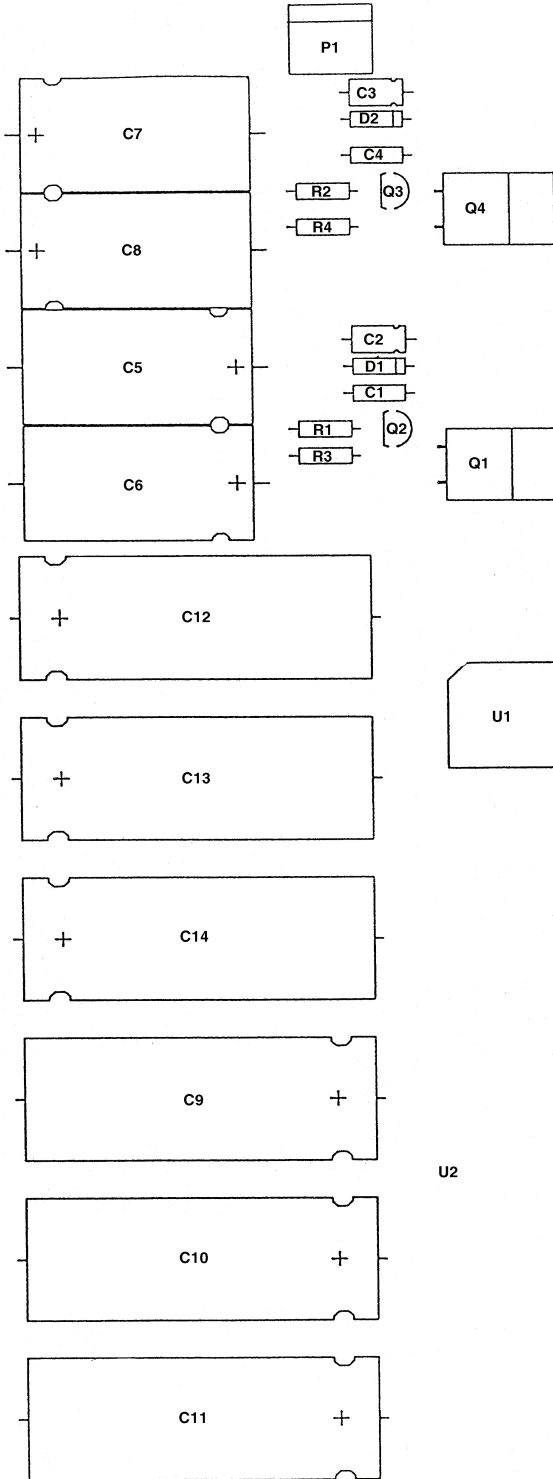
COMPONENT SIDE SHOWN

403-0044 REV C
 GALLIEN-KRUEGER

603.0004.4.20

Q.#	DATE	MODEL #:	DATE:	DESCRIPTION:
		GALLIEN-KRUEGER	3/30/92	NEW 800RB POWER AMP BOARD
		CIRCUIT BOARD		
		ARTWORK		
		DBF: 50044C	DESIGNED BY: R.A.G.	BOARD #: 206-0044-C
			REV#-DATE:	FROM SN: TO SN:

403-0048 REV B
 GALLIEN-KRUEGER



PCO#	DATE

GALLIEN-KRUEGER		MODEL #:	800RB	DATE:	8/29/91	DESCRIPTION:	NEW 800RB POWER SUPPLY
CIRCUIT BOARD ARTWORK	DBF: 50048B	DESIGNED BY:	R.A.G.	BOARD #:	206-0048-B	REV#-DATE:	FROM SN: TO SN:

GALLIEN-KRUEGER	PRODUCTION CHANGE ORDER	PCO#: 3
DATE: 7/23/91	ASSEMBLY #: 2060045 A	MODEL#: 800RB
ASSEMBLY DESCRIPTION: 800RB preamp board		PAGE 1 OF 3

AFFECTS OPTIONS: ALL 100V 120V 220V 240V 50HZ 60HZ

TYPE OF CHANGE:
 NECESSARY TO THE FUNCTION OF THE UNIT
 IMPROVEMENT OR ADDITION TO THE UNIT
 OTHER Using different values pots

CHANGE TO BE IMPLEMENTED TO: <input type="checkbox"/> NEXT PRODUCTION RUN <input type="checkbox"/> ALL UNITS IN PRODUCTION <input type="checkbox"/> ALL UNITS IN STOCK <input type="checkbox"/> ALL UNITS BEING SERVICED <input checked="" type="checkbox"/> OTHER units that don't have 25KB pots	REMARKS: Ran out of CTS 25K pots (in Linear version). Have to modify boards to take the 50KB pot we use on the other amps. Use 50KB's for the 4 tone controls and the crossover.
---	--

BEGINNING SERIAL NUMBER AFFECTED:
 DESCRIPTION OF CHANGE: SEE PCO SUPPLEMENTS CONTINUED ON PCO SUPPLEMENT PAGE _____

1) Change the Following
 R19, R25, R31, R34, R67: 25K pot → 50KB pot R30: 12K → 22K res
 R17, R22, R23, R27: 4.7K → 12K res.
 R29, R32, R33, R36: 3.3K → 5.6K res.
 R20, R21, R26, R28: 220K → 470K res.
 R18, R24, R35: 22K → 47K res
 C11, C12, C17: 472 → 222 cap
 C13, C14: 223 → 103 cap
 C16: 224 → 104 cap

2) Add 27PF cap across R21 (470K)

REASON FOR CHANGE:
 1) to use 50KB pots in place of 25KB pots
 2) stops high freq. oscillation

PARTS ADDED				PARTS DELETED			
PART#	DESCRIPTION	QTY.	REF. DES.	PART#	DESCRIPTION	QTY.	REF. DES.
	27 pF cap	1					
070-0514	50KB Noble pot	5	R19,25,31,34,67		25KB CTS pot	5	R19,25,31,34,67
051-1203	12K res	4	R17,22,23,27	051-4702	4.7 Kres	4	R17,22,23,27
051-5602	5.6K res	4	R29,32,33,36	051-3302	3.3K res	4	R29,32,33,36
051-4704	470K res	4	R20,21,26,28	051-2204	220K res	4	R20,21,26,28
051-4703	47K res	3	R18,24,35	051-2203	22K res	3	R18,24,35
030-2222	222 cap	3	C11,12,17	030-2472	472 cap	3	C11,12,17
030-1103	103 cap	2	C13,14	030-0223	223 cap	2	C13,14
030-4104	104 cap	1	C16	030-2224	224 cap	1	C16
051-2203	22K res	1	R30	051-1203	12K res	1	R30

CONTINUED ON PAGE _____ CONTINUED ON PAGE _____

AFFECTED AREAS	DONE BY	DATE	AFFECTED AREAS (CONT)	DONE BY	DATE
<input checked="" type="checkbox"/> CIRCUIT SCHEMATIC	mg	7/23/91	<input type="checkbox"/>		
<input checked="" type="checkbox"/> BILL OF MATERIAL			<input type="checkbox"/>		
<input type="checkbox"/> AUTO INSERTER			<input type="checkbox"/>		
<input checked="" type="checkbox"/> SAMPLE CHANGE			DOCUMENT DIST. LIST	# COPIES	
<input type="checkbox"/> TEST PROCEDURE			<input type="checkbox"/> GK USA		
<input type="checkbox"/> COMP. CONTROL FORM			<input type="checkbox"/> SERVICE CENTERS		
<input type="checkbox"/> FAB DRAWING			<input type="checkbox"/> GK EUROPE		
<input type="checkbox"/> PUNCH PROGRAM			<input checked="" type="checkbox"/> GK CAMPBELL		
<input type="checkbox"/> PUNCH SAMPLE			<input checked="" type="checkbox"/> ENGINEERING		
<input type="checkbox"/> ASSEMBLY PROCEDURES			<input type="checkbox"/> FABRICATION		
<input type="checkbox"/> ARTWORK			<input type="checkbox"/> PRODUCTION		
<input type="checkbox"/> SILKSCREEN TEMPLATE			<input type="checkbox"/> OUTSIDE SUPPLIERS		
<input type="checkbox"/>			<input type="checkbox"/>		

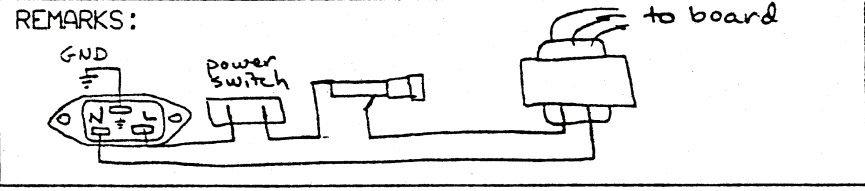
DRAWING(S) SHOWING MODIFICATION ATTACHED: NO YES - SPECIFY: Schem & Layout
 WRITTEN BY: Michael Johns DEPT: Eng DATE: 7/23/91
 REVIEWED/APPROVED BY: DEPT: DATE:

GALLIEN-KRUEGER	PRODUCTION CHANGE ORDER	PCO#: <u>400RB: 7</u> <u>800RB: 11</u>
DATE: 2/1/93	ASSEMBLY #: 302-0050 / 302-0060	MODEL#: 400RB / 800RB
ASSEMBLY DESCRIPTION: 400RB / 800RB Main Assembly		PAGE <u>1</u> OF <u>1</u>

AFFECTS OPTIONS: ALL 100V 120V 220V 240V 50HZ 60HZ

TYPE OF CHANGE:
 NECESSARY TO THE FUNCTION OF THE UNIT
 IMPROVEMENT OR ADDITION TO THE UNIT
 OTHER Done for CSA Approval

CHANGE TO BE IMPLEMENTED TO:
 NEXT PRODUCTION RUN
 ALL UNITS IN PRODUCTION
 ALL UNITS IN STOCK
 ALL UNITS BEING SERVICED
 OTHER _____



BEGINNING SERIAL NUMBER AFFECTED: _____

DESCRIPTION OF CHANGE: SEE PCO SUPPLEMENTS CONTINUED ON PCO SUPPLEMENT PAGE _____

When wiring up power supply, wire from "L" terminal of AC receptical to the power switch. Then wire from the power switch to the end lug of the fuse holder. Then from the other lug of the fuse holder to the transformer. The wire from the "N" terminal goes directly to the transformer.

REASON FOR CHANGE:
 CSA requires these changes for approval.

PARTS ADDED				PARTS DELETED			
PART#	DESCRIPTION	QTY.	REF. DES.	PART#	DESCRIPTION	QTY.	REF. DES.

CONTINUED ON PAGE _____ CONTINUED ON PAGE _____

AFFECTED AREAS	DONE BY	DATE	AFFECTED AREAS (CONT)	DONE BY	DATE
<input type="checkbox"/> CIRCUIT SCHEMATIC			<input type="checkbox"/>		
<input type="checkbox"/> BILL OF MATERIAL			<input type="checkbox"/>		
<input type="checkbox"/> AUTO INSERTER			<input type="checkbox"/>		
<input checked="" type="checkbox"/> SAMPLE CHANGE			DOCUMENT DIST. LIST	# COPIES	
<input type="checkbox"/> TEST PROCEDURE			<input type="checkbox"/> GK USA		
<input type="checkbox"/> COMP. CONTROL FORM			<input type="checkbox"/> SERVICE CENTERS		
<input type="checkbox"/> FAB DRAWING			<input type="checkbox"/> GK EUROPE		
<input type="checkbox"/> PUNCH PROGRAM			<input type="checkbox"/> GK CAMPBELL		
<input type="checkbox"/> PUNCH SAMPLE			<input type="checkbox"/> ENGINEERING		
<input type="checkbox"/> ASSEMBLY PROCEDURES			<input type="checkbox"/> FABRICATION		
<input type="checkbox"/> ARTWORK			<input type="checkbox"/> PRODUCTION		
<input type="checkbox"/> SILKSCREEN TEMPLATE			<input type="checkbox"/> OUTSIDE SUPPLIERS		
<input type="checkbox"/>			<input type="checkbox"/>		

DRAWING(S) SHOWING MODIFICATION ATTACHED: NO YES - SPECIFY:

WRITTEN BY: Michael Johns DEPT: Eng DATE: 2/1/93
 REVIEWED/APPROVED BY: _____ DEPT: _____ DATE: _____

ECO# 15

ENGINEERING CHANGE ORDER

MODEL: 800RB

STOMER Gallien-Krueger
 DESC. 800RB preamp
 ASSY# 206-0045 (145-0045) REV# C6 → D

LEVEL: System Board Fab
 DATE: 2/14/95
 ORIGINATOR: M Johns

<input checked="" type="checkbox"/> EFFECTIVE	<input type="checkbox"/> PENDING	APPROVAL	INITIAL	DATE
<input type="checkbox"/> Next production Run	Pending/Reject Reason:	Engineering	<u>MJ</u>	<u>2/14/95</u>
<input type="checkbox"/> All in Process		Material		
<input type="checkbox"/> All in Stock	Type of Change: <input type="checkbox"/> Necessary <input checked="" type="checkbox"/> Improvement <input type="checkbox"/> Other:	Production		
<input type="checkbox"/> All being Serviced		Fabrication		
<input checked="" type="checkbox"/> Others: <u>when order is placed for new boards</u>		Marketing		
		Cost accounting		

REASON FOR CHANGE:
To replace TL604 w/ Siliconix DG419
 Continued on ECO supplement page _____

AFFECTED AREA:

Schematic

Artwork

Bill of Material

Comp. Control Form

Assembly Drawing

Test Procedure

Fab Drawing

Silkscreen

Punch Program

DESCRIPTION OF CHANGE:
Board is re-layed out to accomodate DG419 instead of TL604. Rev # goes from C6 to D.
 Continued on ECO supplement page _____

TOTAL PARTS ADDED:				TOTAL PARTS DELETED:			
PART#	DESCRIPTION	QTY	REF.DES.	PART#	DESCRIPTION	QTY	REF.DES.
	1K res	1	R86A		224 cap	1	C61
	2.2K res	1	R87A		4.7K res	1	R63
	335 cap	2	C61, C70		12K res	1	R73
	220R res	2	R63, R81		104 cap	1	C70
	470R res	1	R73		50KB pot	1	R82

DISTRIBUTION: Engineering Material Production Fabrication Others: over →

GALLIEN TECHNOLOGY

Tel: (408) 441-8081

2240 Paragon Dr., San Jose, CA 95131

Fax: (408) 441-8085

ECO#

15

ECO SUPPLEMENT

MODEL:

800RB

CUSTOMER _____

LEVEL: System

DATE: _____

DESC. _____

Board

ORIGINATOR: _____

ASSY# _____ REV# _____

Fab

REASON FOR CHANGE: (Continued from Page:)

Continued on ECO supplement page _____

DESCRIPTION OF CHANGE: (Continued from Page:)

Continued on ECO supplement page _____

TOTAL PARTS ADDED:				TOTAL PARTS DELETED:			
PART#	DESCRIPTION	QTY	REF.DES.	PART#	DESCRIPTION	QTY	REF.DES.
	2K B pot	1	R82		5.6K res	1	R81
	47K res	1	R4284		220K res	1	R4284
	DG419	1	U5		TL604	1	U5

GALLIEN TECHNOLOGY

Tel: (408) 441-8081

2240 Paragon Dr., San Jose, CA 95131

Fax: (408) 441-8085

ECO#

16

ENGINEERING CHANGE ORDER

MODEL:

800RB

CUSTOMER Gallien - Krueger
 DESC. 800RB
 ASSY# 206-0044 REV# C8

LEVEL: System
 Board
 Fab

DATE: 8/28/95
 ORIGINATOR: Kevin Robertson

EFFECTIVE 8/28/95
 Next production Run
 All in Process
 All in Stock
 All being Serviced
 Others:

PENDING
 Pending/Reject Reason:
 Type of Change: Necessary
 Improvement
 Other:

APPROVAL	INITIAL	DATE
Engineering		
Material		
Production		
Fabrication		
Marketing		
Cost accounting		

REASON FOR CHANGE:
*Output Clipping before Full Power,
 decreasing resistor value allows
 an increased current drive
 to output stage.*
 Continued on ECO supplement page _____

AFFECTED AREA:
 Schematic *DR 8/28/95*
 Artwork
 Bill of Material *DR 8/28/95*
 Comp. Control Form
 Assembly Drawing
 Test Procedure
 Fab Drawing
 Silkscreen
 Punch Program

DESCRIPTION OF CHANGE:
*Substitution of a different
 resistor value, 2.2k in place
 of 3.3k at R34.*
 Continued on ECO supplement page _____

TOTAL PARTS ADDED:				TOTAL PARTS DELETED:			
PART#	DESCRIPTION	QTY	REF.DES.	PART#	DESCRIPTION	QTY	REF.DES.
051-3202-0	2.2k 1/4 watt	1	R34	051-3362-0	3.3k 1/4 watt	1	R34

DISTRIBUTION: Engineering Material Production Fabrication Others: SALES

ENGINEERING CHANGE ORDER

MODEL: 800RB

CUSTOMER: Gallien Kueger
 DESC: 800RB preamp board
 ASSY#: 206-0045-D REV#: D

LEVEL: System
 Board
 Fab

DATE: 11/6/95
 ORIGINATOR: M Johns

<input checked="" type="checkbox"/> EFFECTIVE	<input type="checkbox"/> PENDING	APPROVAL	INITIAL	DATE
<input checked="" type="checkbox"/> Next production Run	Pending/Reject Reason:	Engineering	<u>MJ</u>	<u>11/6/95</u>
<input checked="" type="checkbox"/> All in Process		Material		
<input type="checkbox"/> All in Stock	Type of Change: <input type="checkbox"/> Necessary <input type="checkbox"/> Improvement <input checked="" type="checkbox"/> Other:	Production		
<input type="checkbox"/> All being Serviced		Fabrication		
<input checked="" type="checkbox"/> Others: <u>Until old boards and front panels are used up</u>		Marketing	<u>RK (MJ)</u>	<u>11/6/95</u>
		Cost accounting		

REASON FOR CHANGE:
Substitute 50KB pot in Boost control until changeover is made with new 2KB pot and new boards. (Undoes some of ECO#15)
^ D17 revision
 Continued on ECO supplement page _____

AFFECTED AREA:

Schematic

Artwork

Bill of Material

Comp. Control Form

Assembly Drawing

Test Procedure

Fab Drawing

Silkscreen

Punch Program

DESCRIPTION OF CHANGE:

- 1) Change C61 from 335 to 224
- 2) " R63 " 220R → 4.7K
- 3) " C70 " 335 → 104
- 4) " R73 " 470R → 12K
- 5) " R82 " 2KB pot → 50KB pot
- 6) " R81 " 220R → 5.6K
- 7) " R84 " 47K → 220K

Continued on ECO supplement page _____

TOTAL PARTS ADDED:				TOTAL PARTS DELETED:			
PART#	DESCRIPTION	QTY	REF.DES.	PART#	DESCRIPTION	QTY	REF.DES.
	224 cap	1	C61		335 cap	1	C61, 70
	4.7K res	1	R63		220R res	1*	R63, 81
	104 Cap	1	C70		470R res	1	R73
	12K res	1	R73		2KB pot	1	R82
	50KB pot	1	R82		47K res	1	R84
	5.6K res	1	R81				
	220K res	1	R84				

DISTRIBUTION: Engineering Material Production Fabrication Others: _____

ENGINEERING CHANGE ORDER

MODEL:

800RB

CUSTOMER: Gallien Knege
 DESC: 800 RB preamp board
 ASSY#: 145-0045-D, 206-0045-D REV# D→E

LEVEL: System
 Board
 Fab

DATE: 5/7/96
 ORIGINATOR: M Johns

EFFECTIVE
 Next production Run
 All in Process
 All in Stock
 All being Serviced
 Others:

PENDING
 Pending/Reject Reason:
 Type of Change: Necessary
 Improvement
 Other:

APPROVAL	INITIAL	DATE
Engineering	<u>Mg</u>	<u>5/7/96</u>
Material		
Production		
Fabrication		
Marketing		
Cost accounting		

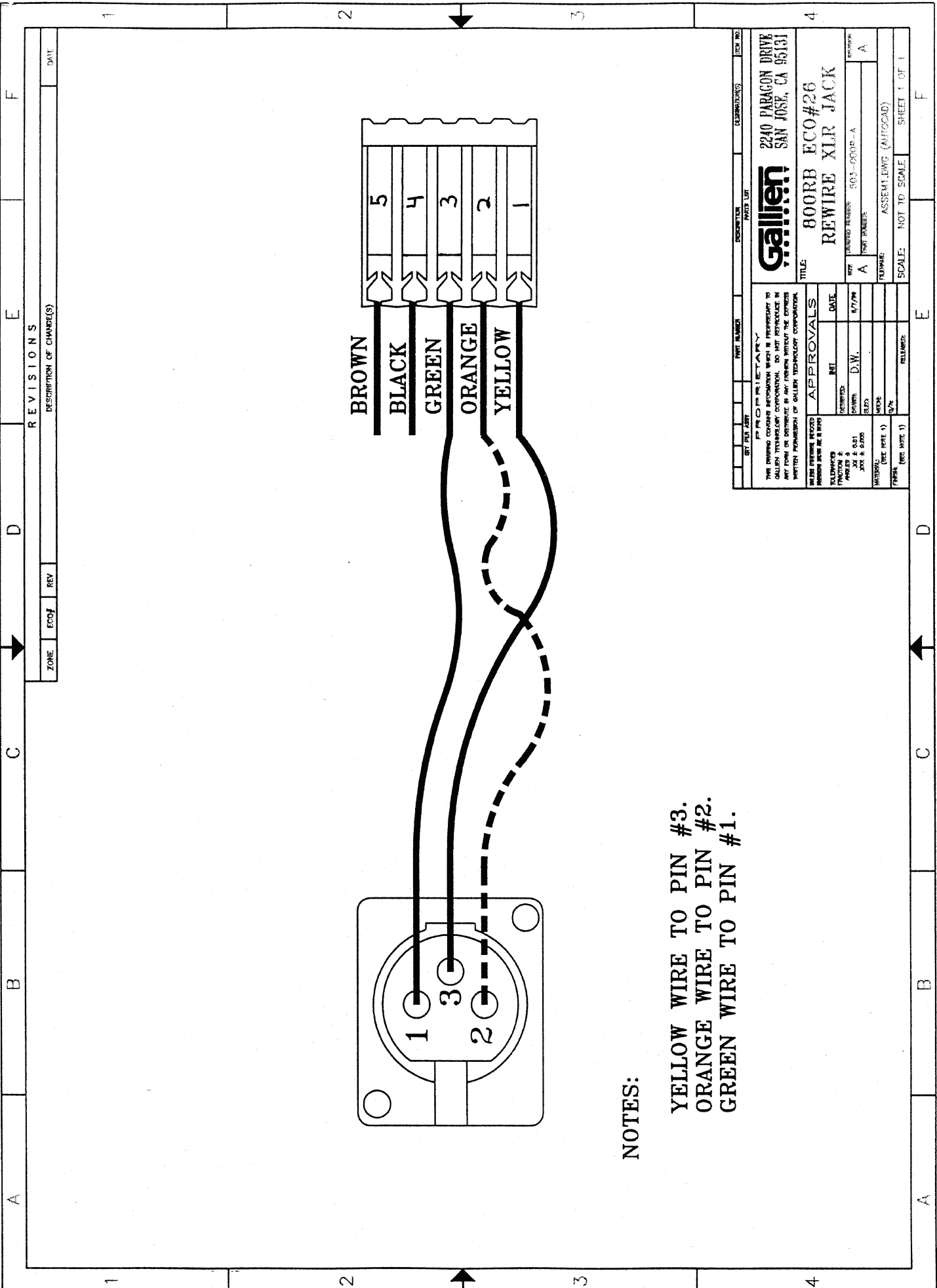
REASON FOR CHANGE:
use new pots, 7mm bushing instead of 9mm
 Continued on ECO supplement page _____

AFFECTED AREA:
 Schematic
 Artwork
 Bill of Material
 Comp. Control Form
 Assembly Drawing
 Test Procedure
 Fab Drawing
John to change front panel.
 Silkscreen
 Punch Program

DESCRIPTION OF CHANGE:
 1) all pots change from 9mm version to 7mm
 2) R60 (22K) moves on layout
 3) adds 2 jumpers R17A and R115A
 Continued on ECO supplement page _____

TOTAL PARTS ADDED:				TOTAL PARTS DELETED:			
PART#	DESCRIPTION	QTY	REF.DES.	PART#	DESCRIPTION	QTY	REF.DES.
052-0000-0	0.52 res	2	R17A, R115A	070-1513-0	50KA pot 9mm	1	R17
070-1513-0	50KA pot 7mm	1	R17	070-0514-0	50KB pot 9mm	6	R36, 53, 64, 68, 115, 118
070-1514-0	50KB pot 7mm	6	R36, 53, 64, 68, 115	070-0522-0	2KB pot 9mm	1	R82
070-1522-0	2KB pot 7mm	1	R82	070-0523-0	50KB dual pot 9mm	1	R100
070-1523-0	50KB dual pot 7mm	1	R100				

DISTRIBUTION:
 Engineering Material Production Fabrication Others:



NOTES:

- YELLOW WIRE TO PIN #3.
- ORANGE WIRE TO PIN #2.
- GREEN WIRE TO PIN #1.

REVISIONS		DATE
ZONE	ECO#	REV

REV. NO.	DESCRIPTION	DATE	DESIGNED BY

Galilen
2240 PARAGON DRIVE
SAN JOSE, CA 95131

TITLE: **800RB ECO#26
REWIRE XLR JACK**

DATE	BY	REVISED BY	DATE

APPROVALS

DESIGNED	DATE
D.W.	8/7/98

WORKSHEET NO. 503-0000-A

ASSEMBLY (AUG00AD)

SCALE: NOT TO SCALE

SHEET 1 OF 1