

ECO DES	REV	DESCRIPTION	REV. NO.	DATE

APPROVALS	DATE
DRAWN: Charles	08-12-26
CHECKED:	
W. ENG:	
MATERIAL:	
WPG:	
MPG ENG:	
ISSUED:	

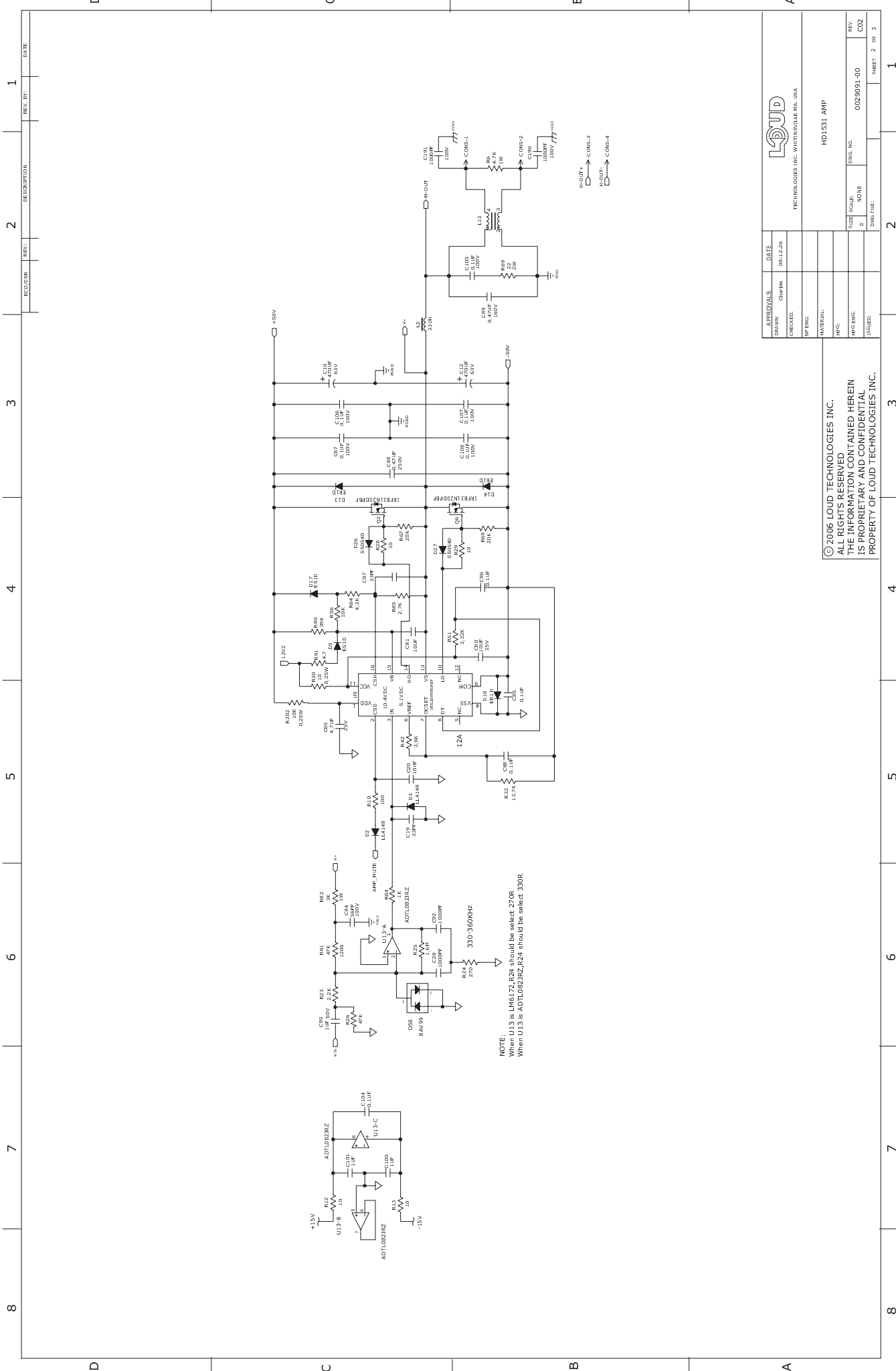
SIZE	SCALE	DWG NO.	REV
D	1:1	0029091-00	C02
DRAWN BY: _____			
DATE: _____			

APPROVALS	DATE
DRAWN: Charles	08-12-26
CHECKED:	
W. ENG:	
MATERIAL:	
WPG:	
MPG ENG:	
ISSUED:	

APPROVALS	DATE
DRAWN: Charles	08-12-26
CHECKED:	
W. ENG:	
MATERIAL:	
WPG:	
MPG ENG:	
ISSUED:	

APPROVALS	DATE
DRAWN: Charles	08-12-26
CHECKED:	
W. ENG:	
MATERIAL:	
WPG:	
MPG ENG:	
ISSUED:	

APPROVALS	DATE
DRAWN: Charles	08-12-26
CHECKED:	
W. ENG:	
MATERIAL:	
WPG:	
MPG ENG:	
ISSUED:	



NOTE:  
 When U13-B is LM6172, R24 should be select: 270K  
 When U13-A is ADTL082RZ, R24 should be select: 330K

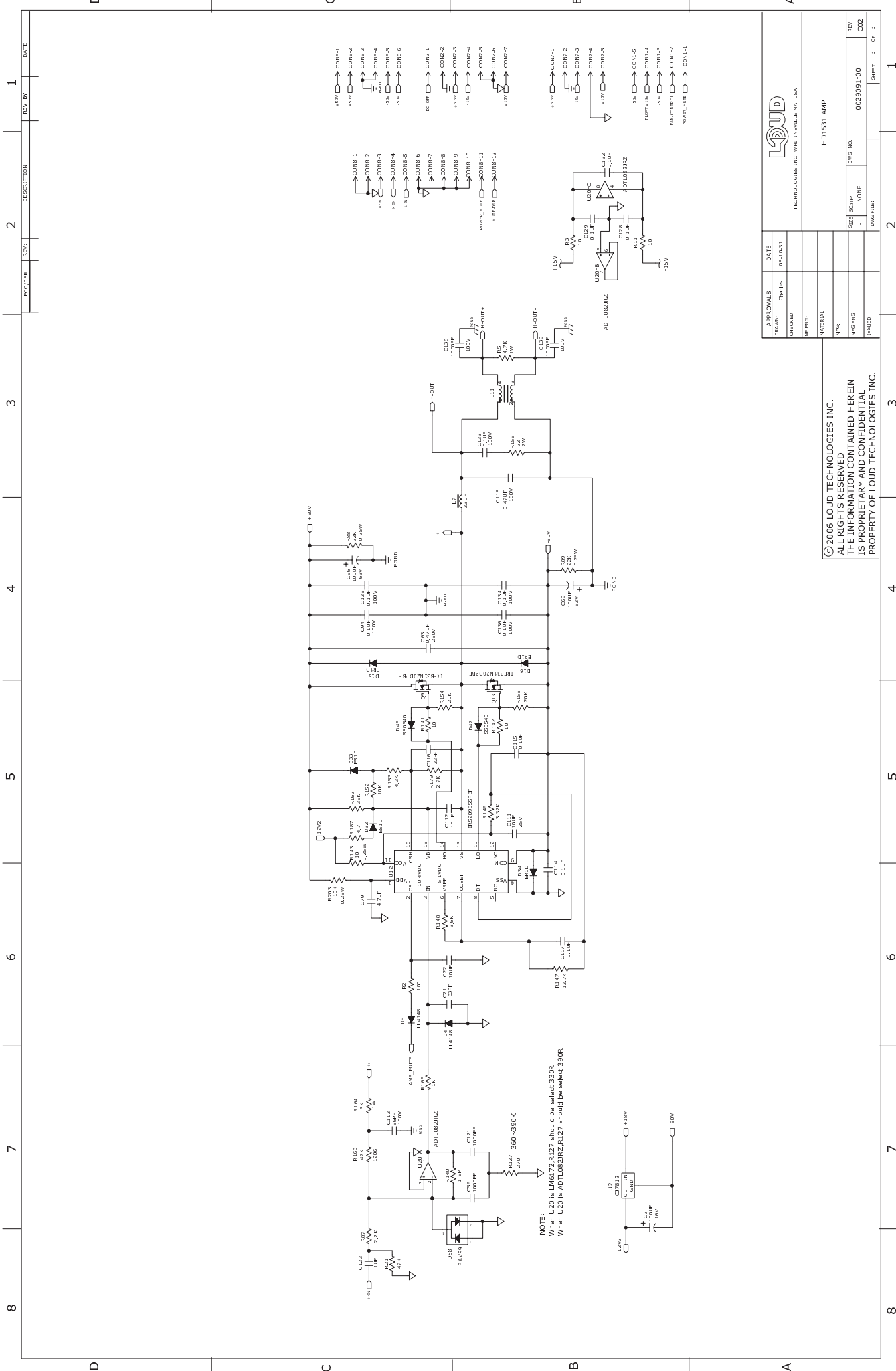
APPROVALS		DATE
DRAWN:	Chambers	08-12-26
CHECKED:		
DATE:		
BY ENG:		
MATERIAL:		
MPG ENG:		
DESIGN:		

© 2006 LOUD TECHNOLOGIES INC.  
 ALL RIGHTS RESERVED  
 THE INFORMATION CONTAINED HEREIN  
 IS PROPRIETARY AND CONFIDENTIAL  
 PROPERTY OF LOUD TECHNOLOGIES INC.

APPROVALS		DATE
DRAWN:	Chambers	08-12-26
CHECKED:		
DATE:		
BY ENG:		
MATERIAL:		
MPG ENG:		
DESIGN:		

LOUD  
 TECHNOLOGIES INC. WINTHROPVILLE PA, USA

HD1531 AMP  
 SIZE: 5000  
 D: 1000  
 PART NO: 0029091-00  
 REV: C02  
 SHEET 2 of 3



© 2006 LOUD TECHNOLOGIES INC.  
 ALL RIGHTS RESERVED  
 THE INFORMATION CONTAINED HEREIN  
 IS PROPRIETARY AND CONFIDENTIAL  
 PROPERTY OF LOUD TECHNOLOGIES INC.

APPROVALS	DATE
DRAWN: Charles	08-10-01
CHECKED:	
W/ ENG:	
MATERIAL:	
WPC:	
MFG ENG:	
DESIGN:	

TECHNOLOGIES INC. WILMINGTON, MA, USA	
LOUD	
HD1531 AMP	
SIZE SCALE:	DRAWING NO.:
D 1/8" = 1"	0029091-00
REV:	REV:
C02	C02
SHEET 3	OF 3