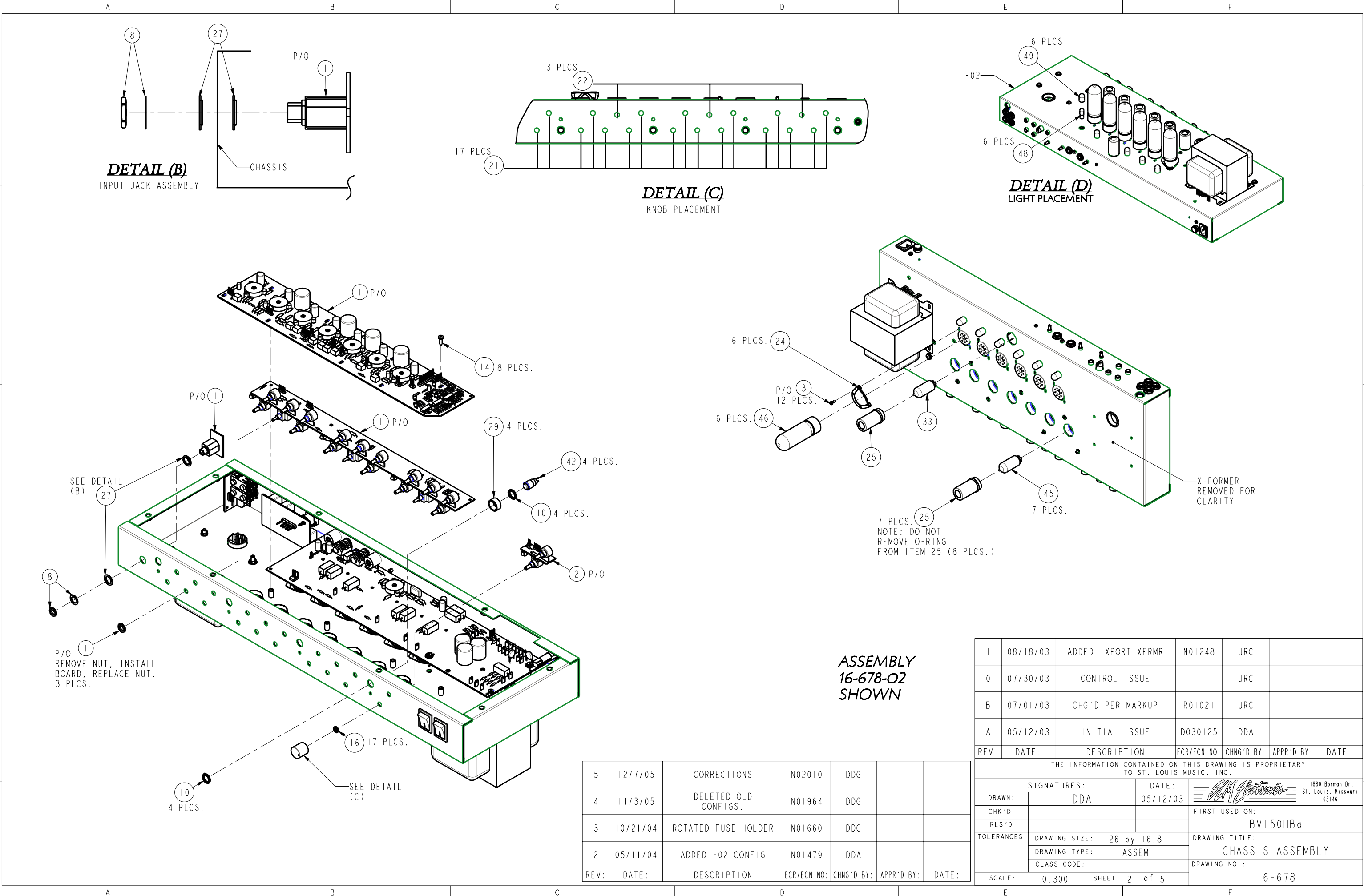
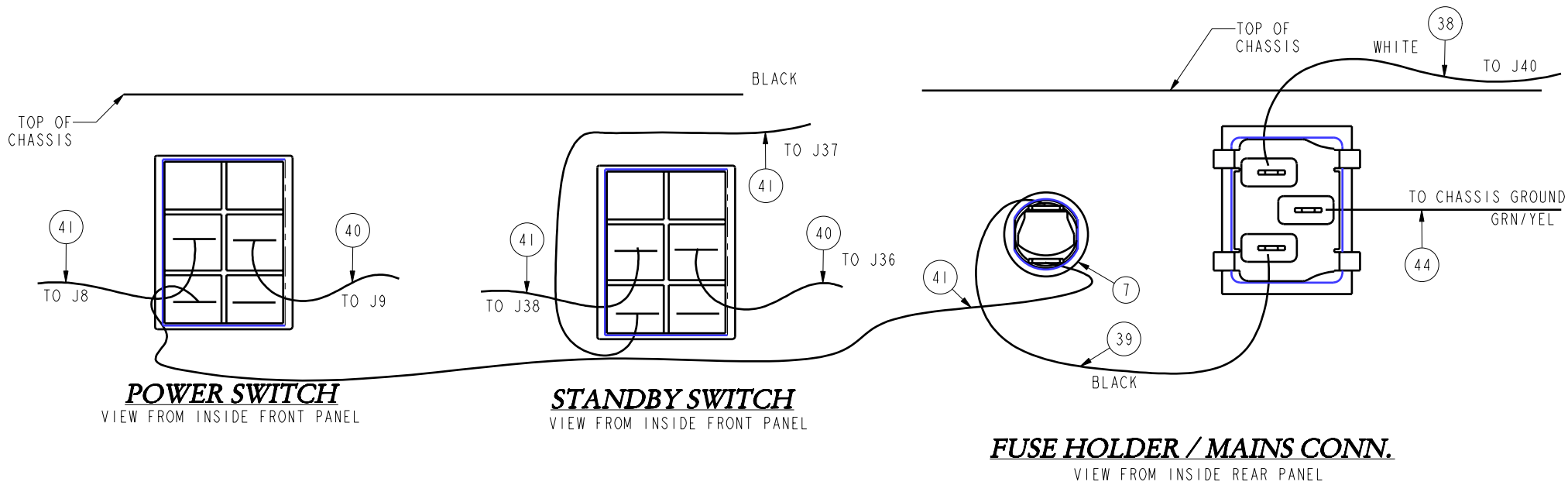


16-678-02

5	12/7/05	CORRECTIONS	N02010	DDG		
4	11/3/05	DELETED OLD CONFIGS.	N01964	DDG		
3	10/21/04	ROTATED FUSE HOLDER	N01660	DDG		
2	05/11/04	ADDED -02 CONFIG	N01479	DDA		
REV:	DATE:	DESCRIPTION	ECR/ECN NO:	CHNG'D BY:	APPR'D BY:	DATE:

I	08/18/03	ADD XPORT XFMR	N01248	JRC		
O	07/30/03	CONTROL ISSUE		JRC		
B	7/1/03	CHG'D PER MARKUP	R01021	JRC		
A	05/12/03	INITIAL ISSUE	D030125	DDA		
REV:	DATE:	DESCRIPTION	ECR/ECN NO:	CHNG'D BY:	APPR'D BY:	DATE:
THE INFORMATION CONTAINED ON THIS DRAWING IS PROPRIETARY TO ST. LOUIS MUSIC, INC.						
SIGNATURES:			DATE:			
DRAWN:	DDA		05/12/03			
CHK'D:					FIRST USED ON:	
RLS'D:					BVI50HBα	
TOLERANCES:	DRAWING SIZE:	26 by 16.8	DRAWING TITLE:		CHASSIS ASSEMBLY	
	DRAWING TYPE:	ASSEM	DRAWING NO.:		16-678	
	CLASS CODE:					
SCALE:	0.400		SHEET:	1 of 5		





ITEM 31, TRANSFORMER

POWER X-FORMER	PRIMARY	BLACK	J29	J27	J31	J29
		BLU/WHT		J31	J26	J27
		BLUE		J26	J30	J30
		WHITE	J25	J25	J24	J24
		BROWN		J30	J21	J21
		GRAY		J29	J27	J31
		VIOLET		J32	J32	J32
WIRE HOOKUP TABLE		WIRE COLOR		J	W	U
TAB CONNECTIONS (ITEM 3)						

POWER X-FORMER	SECONDARY	RED	J14			
		RED	J15			
		BLUE	J16			
		BLUE	J17			
		GREEN	J11			
		GREEN	J12			
		ORANGE	J39			
		YELLOW				
		ORANGE				
WIRE HOOKUP TABLE		WIRE COLOR		J	W	U
TAB CONNECTIONS (ITEM 3)						


94-651-01

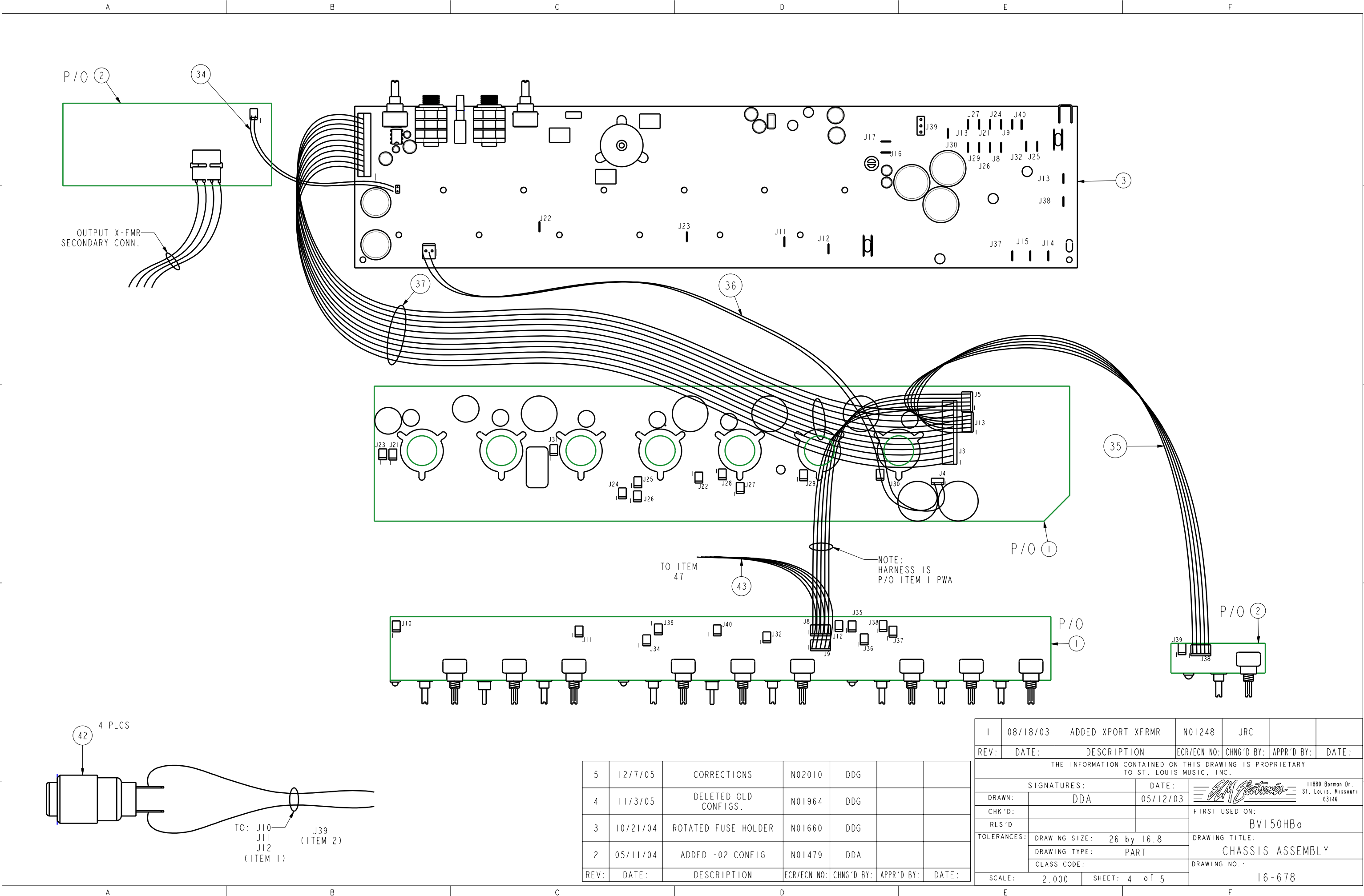
OUTPUT X-FORMER	PRIMARY	RED	J13
		BLUE	J22
		BROWN	J23
WIRE HOOKUP TABLE		WIRE COLOR	TAB CONNECTIONS (ITEM 3)

OUTPUT X-FORMER	SECONDARY	BLACK	J33
		GREEN	
		ORANGE	
		YELLOW	
WIRE HOOKUP TABLE		WIRE COLOR	TAB CONNECTIONS (ITEM 2)

CABLE TIE USAGE CHART (ITEM 26)

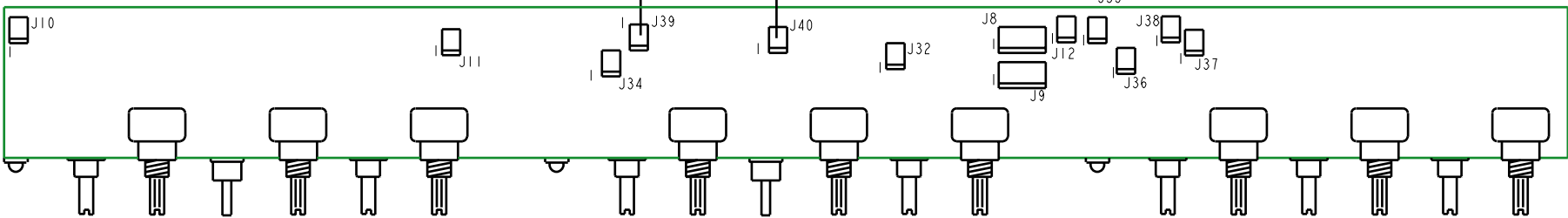
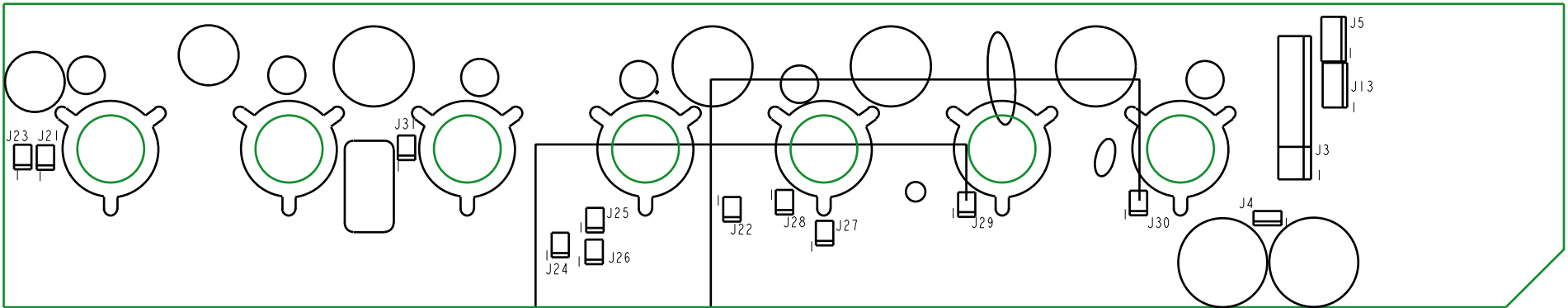
APPLICATION	QTY
PWR X PRIMARY	1
PWR X SECONDARY	1
PWR SW LEADS	1
AC INLET & FUSE	1
ITEM (37) OT LEADS & ITEM (43)	3
ITEM (43) & 97-010-03	1
TOTAL	8

5	12/7/05	CORRECTIONS	N02010	DDG		
4	11/3/05	DELETED OLD CONFIGS.	N01964	DDG		
3	10/21/04	ROTATED FUSE HOLDER	N01660	DDG		
2	05/11/04	ADDED -02 CONFIG	N01479	DDA		
1	08/18/03	ADDED XPORT XFRMR	N01248	JRC		
0	07/30/03	CONTROL ISSUE		JRC		
B	07/01/03	CHG'D PER MARKUP	R01021	JRC		
A	05/12/03	INITIAL ISSUE	D030125	DDA		
REV:	DATE:	DESCRIPTION	ECR/ECN NO:	CHNG'D BY:	APPR'D BY:	DATE:
THE INFORMATION CONTAINED ON THIS DRAWING IS PROPRIETARY TO ST. LOUIS MUSIC, INC.						
SIGNATURES:			DATE:			
DRAWN:	DDA		05/12/03	11880 Borman Dr. St. Louis, Missouri 63146		
CHK'D:				FIRST USED ON:		
RLS'D				BV150HBa		
TOLERANCES:	DRAWING SIZE: 26 by 16.8			DRAWING TITLE:		
	DRAWING TYPE: ASSEM			CHASSIS ASSEMBLY		
	CLASS CODE:			DRAWING NO.:		
SCALE: 0.600		SHEET: 3 of 5		16-678		




5	12/7/05	CORRECTIONS	N02010	DDG		
4	11/3/05	DELETED OLD CONFIGS.	N01964	DDG		
3	10/21/04	ROTATED FUSE HOLDER	N01660	DDG		
2	05/11/04	ADDED -02 CONFIG	N01479	DDA		
REV:	DATE:	DESCRIPTION	ECR/ECN NO:	CHNG'D BY:	APPR'D BY:	DATE:

I	08/18/03	ADDED XPORT XFRMR	N01248	JRC		
REV:	DATE:	DESCRIPTION	ECR/ECN NO:	CHNG'D BY:	APPR'D BY:	DATE:
THE INFORMATION CONTAINED ON THIS DRAWING IS PROPRIETARY TO ST. LOUIS MUSIC, INC.						
SIGNATURES:			DATE:	11880 Borman Dr. St. Louis, Missouri 63146		
DRAWN:	DDA		05/12/03	FIRST USED ON: BV150HBa		
CHK'D:						
RLS'D:						
TOLERANCES:	DRAWING SIZE: 26 by 16.8		DRAWING TITLE:			
	DRAWING TYPE: PART		CHASSIS ASSEMBLY			
	CLASS CODE:		DRAWING NO.:			
SCALE: 2.000		SHEET: 4 of 5		16-678		



CABLE HOOKUP CHART				
WIRE #	2 PIN HDR ON MAIN BD	2 PIN HDR ON POT BRD	P/N	DESCRIPTION
W1	J21*	J31*	97-206-40	6" SHIELDED CABLE PREP
W2	J22	J32	97-206-40	6" SHIELDED CABLE PREP
W3	J23	J33	97-206-45	9" SHIELDED CABLE PREP
W4	J24	J34	97-206-40	6" SHIELDED CABLE PREP
W5	J25	J35	97-206-45	9" SHIELDED CABLE PREP
W6	J26	J36	97-206-45	9" SHIELDED CABLE PREP
W7	J27	J37	97-206-40	6" SHIELDED CABLE PREP
W8	J28	J38	97-206-40	6" SHIELDED CABLE PREP
W9	J29	J39	97-206-55	11" SHIELDED CABLE PREP
W10	J30	J40	97-206-55	11" SHIELDED CABLE PREP
W11	J5 (5 PIN)	J8 (5 PIN)	97-010-03	5 PIN 11" HARNESS

* J21 AND J31 ARE BOTH ON MAIN BOARD.
NOTE: P/N 99-206-XX SUPERCEDES 97-206-XX

5	12/7/05	CORRECTIONS	N02010	DDG		
4	11/3/05	DELETED OLD CONFIGS.	N01964	DDG		
3	10/21/04	ROTATED FUSE HOLDER	N01660	DDG		
2	05/11/04	ADDED -02 CONFIG	N01479	DDA		
1	08/18/03	ADDED XPORT XFRMR	N01248	JRC		
0	07/30/03	CONTROL ISSUE		JRC		
B	07/01/03	CHG'D PER MARKUP	R01021	JRC		
A	05/12/03	INITIAL ISSUE	D030125	DDA		
REV:	DATE:	DESCRIPTION	ECR/ECN NO:	CHNG'D BY:	APPR'D BY:	DATE:
THE INFORMATION CONTAINED ON THIS DRAWING IS PROPRIETARY TO ST. LOUIS MUSIC, INC.						
SIGNATURES:			DATE:	11880 Borman Dr. St. Louis, Missouri 63146		
DRAWN:	DDA		03-JUN-02			
CHK'D:				FIRST USED ON:		
RLS'D				BVI50HBa		
TOLERANCES:	DRAWING SIZE: 26 by 16.8			DRAWING TITLE:		
	DRAWING TYPE: ASSEM			CHASSIS ASSEMBLY		
	CLASS CODE:			DRAWING NO.:		
SCALE: 1.000		SHEET: 5 of 5		16-678		