

NOTES

- 1) CAUTION: SHOCK HAZARD!! THIS UNIT CONTAINS HAZARDOUS VOLTAGE. IT IS DISCONNECTED FROM THE POWER SUPPLY. BE SURE POWER SUPPLY IS DISCHARGED BEFORE TOUCHING INTERNAL PARTS.
- 2) UNLESS NOTED, RESISTOR VALUES IN OHMS, 1/4W-5% TOL. CAPACITOR VALUES IN MICROFARADS 50V-10% TOL.
- 3) VOLTAGES ARE MEASURED WITH A MEDIUM OSCILLOSCOPE AND A MEDIUM DIGITAL VOLTMETER.
- 4) BRIGHTNESS SWITCH GROUND & CHASSIS GROUND & SHIELD CONNECTION VALUES FOR 6BE15, 6BE23, 6BE25 ON THE G-1300A VERSION.

CAUTION: THIS SCHEMATIC IS PROVIDED FOR USE BY QUALIFIED PERSONNEL. IT IS NOT TO BE USED FOR REPAIR OR SERVICE. REFER TO THE QUALIFIED SERVICE MANUAL FOR REPAIR AND SERVICE INSTRUCTIONS. THAT EXPLAINED IN THE OPERATING INSTRUCTIONS.

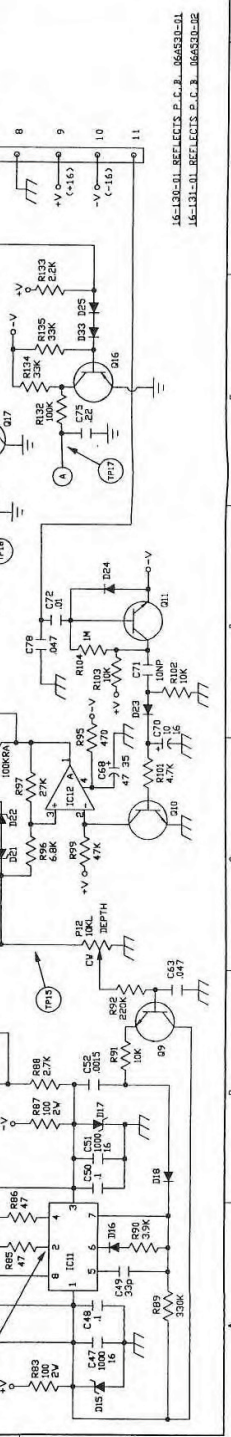
CHASSIS GROUND & SHIELD CONNECTION VALUES FOR 6BE15, 6BE23, 6BE25 ON THE G-1300A VERSION.

RESISTOR	DESCRIPTION	PART NO.	10K TOL	DESCRIPTION	PART NO.	10K TOL
AP-1	10K TRIM	71-105-02				
AP-2	10K TRIM	71-105-02				
AP-3	10K TRIM	71-105-02				
AP-4	10K TRIM	71-105-02				
AP-5	10K TRIM	71-105-02				
AP-6	10K TRIM	71-105-02				
AP-7	10K TRIM	71-105-02				
AP-8	10K TRIM	71-105-02				
AP-9	10K TRIM	71-105-02				
AP-10	10K TRIM	71-105-02				
AP-11	10K TRIM	71-105-02				
AP-12	10K TRIM	71-105-02				
AP-13	10K TRIM	71-105-02				
AP-14	10K TRIM	71-105-02				
AP-15	10K TRIM	71-105-02				
AP-16	10K TRIM	71-105-02				
AP-17	10K TRIM	71-105-02				
AP-18	10K TRIM	71-105-02				
AP-19	10K TRIM	71-105-02				
AP-20	10K TRIM	71-105-02				
AP-21	10K TRIM	71-105-02				
AP-22	10K TRIM	71-105-02				
AP-23	10K TRIM	71-105-02				
AP-24	10K TRIM	71-105-02				
AP-25	10K TRIM	71-105-02				
AP-26	10K TRIM	71-105-02				
AP-27	10K TRIM	71-105-02				
AP-28	10K TRIM	71-105-02				
AP-29	10K TRIM	71-105-02				
AP-30	10K TRIM	71-105-02				
AP-31	10K TRIM	71-105-02				
AP-32	10K TRIM	71-105-02				
AP-33	10K TRIM	71-105-02				
AP-34	10K TRIM	71-105-02				
AP-35	10K TRIM	71-105-02				
AP-36	10K TRIM	71-105-02				
AP-37	10K TRIM	71-105-02				
AP-38	10K TRIM	71-105-02				
AP-39	10K TRIM	71-105-02				
AP-40	10K TRIM	71-105-02				
AP-41	10K TRIM	71-105-02				
AP-42	10K TRIM	71-105-02				
AP-43	10K TRIM	71-105-02				
AP-44	10K TRIM	71-105-02				
AP-45	10K TRIM	71-105-02				
AP-46	10K TRIM	71-105-02				
AP-47	10K TRIM	71-105-02				
AP-48	10K TRIM	71-105-02				
AP-49	10K TRIM	71-105-02				
AP-50	10K TRIM	71-105-02				
AP-51	10K TRIM	71-105-02				
AP-52	10K TRIM	71-105-02				
AP-53	10K TRIM	71-105-02				
AP-54	10K TRIM	71-105-02				
AP-55	10K TRIM	71-105-02				
AP-56	10K TRIM	71-105-02				
AP-57	10K TRIM	71-105-02				
AP-58	10K TRIM	71-105-02				
AP-59	10K TRIM	71-105-02				
AP-60	10K TRIM	71-105-02				
AP-61	10K TRIM	71-105-02				
AP-62	10K TRIM	71-105-02				
AP-63	10K TRIM	71-105-02				
AP-64	10K TRIM	71-105-02				
AP-65	10K TRIM	71-105-02				
AP-66	10K TRIM	71-105-02				
AP-67	10K TRIM	71-105-02				
AP-68	10K TRIM	71-105-02				
AP-69	10K TRIM	71-105-02				
AP-70	10K TRIM	71-105-02				
AP-71	10K TRIM	71-105-02				
AP-72	10K TRIM	71-105-02				
AP-73	10K TRIM	71-105-02				
AP-74	10K TRIM	71-105-02				
AP-75	10K TRIM	71-105-02				
AP-76	10K TRIM	71-105-02				
AP-77	10K TRIM	71-105-02				
AP-78	10K TRIM	71-105-02				
AP-79	10K TRIM	71-105-02				
AP-80	10K TRIM	71-105-02				
AP-81	10K TRIM	71-105-02				
AP-82	10K TRIM	71-105-02				
AP-83	10K TRIM	71-105-02				
AP-84	10K TRIM	71-105-02				
AP-85	10K TRIM	71-105-02				
AP-86	10K TRIM	71-105-02				
AP-87	10K TRIM	71-105-02				
AP-88	10K TRIM	71-105-02				
AP-89	10K TRIM	71-105-02				
AP-90	10K TRIM	71-105-02				
AP-91	10K TRIM	71-105-02				
AP-92	10K TRIM	71-105-02				
AP-93	10K TRIM	71-105-02				
AP-94	10K TRIM	71-105-02				
AP-95	10K TRIM	71-105-02				
AP-96	10K TRIM	71-105-02				
AP-97	10K TRIM	71-105-02				
AP-98	10K TRIM	71-105-02				
AP-99	10K TRIM	71-105-02				
AP-100	10K TRIM	71-105-02				

REVISIONS

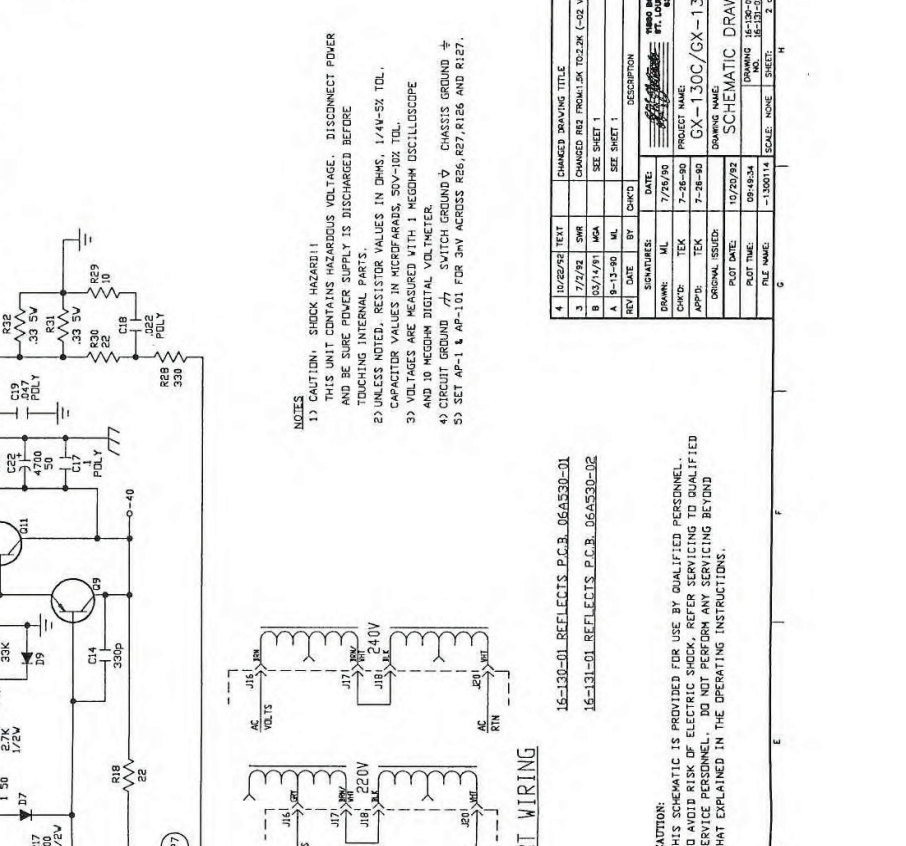
REV	DATE	BY	CHK'D	DESCRIPTION
1	6-28-80			INITIAL DESIGN
2	7-25-80			DESIGN CHANGES
3	7-25-80			DESIGN CHANGES
4	7-25-80			DESIGN CHANGES
5	7-25-80			DESIGN CHANGES
6	7-25-80			DESIGN CHANGES
7	7-25-80			DESIGN CHANGES
8	7-25-80			DESIGN CHANGES
9	7-25-80			DESIGN CHANGES
10	7-25-80			DESIGN CHANGES
11	7-25-80			DESIGN CHANGES
12	7-25-80			DESIGN CHANGES
13	7-25-80			DESIGN CHANGES
14	7-25-80			DESIGN CHANGES
15	7-25-80			DESIGN CHANGES
16	7-25-80			DESIGN CHANGES
17	7-25-80			DESIGN CHANGES
18	7-25-80			DESIGN CHANGES
19	7-25-80			DESIGN CHANGES
20	7-25-80			DESIGN CHANGES
21	7-25-80			DESIGN CHANGES
22	7-25-80			DESIGN CHANGES
23	7-25-80			DESIGN CHANGES
24	7-25-80			DESIGN CHANGES
25	7-25-80			DESIGN CHANGES
26	7-25-80			DESIGN CHANGES
27	7-25-80			DESIGN CHANGES
28	7-25-80			DESIGN CHANGES
29	7-25-80			DESIGN CHANGES
30	7-25-80			DESIGN CHANGES
31	7-25-80			DESIGN CHANGES
32	7-25-80			DESIGN CHANGES
33	7-25-80			DESIGN CHANGES
34	7-25-80			DESIGN CHANGES
35	7-25-80			DESIGN CHANGES
36	7-25-80			DESIGN CHANGES
37	7-25-80			DESIGN CHANGES
38	7-25-80			DESIGN CHANGES
39	7-25-80			DESIGN CHANGES
40	7-25-80			DESIGN CHANGES
41	7-25-80			DESIGN CHANGES
42	7-25-80			DESIGN CHANGES
43	7-25-80			DESIGN CHANGES
44	7-25-80			DESIGN CHANGES
45	7-25-80			DESIGN CHANGES
46	7-25-80			DESIGN CHANGES
47	7-25-80			DESIGN CHANGES
48	7-25-80			DESIGN CHANGES
49	7-25-80			DESIGN CHANGES
50	7-25-80			DESIGN CHANGES
51	7-25-80			DESIGN CHANGES
52	7-25-80			DESIGN CHANGES
53	7-25-80			DESIGN CHANGES
54	7-25-80			DESIGN CHANGES
55	7-25-80			DESIGN CHANGES
56	7-25-80			DESIGN CHANGES
57	7-25-80			DESIGN CHANGES
58	7-25-80			DESIGN CHANGES
59	7-25-80			DESIGN CHANGES
60	7-25-80			DESIGN CHANGES
61	7-25-80			DESIGN CHANGES
62	7-25-80			DESIGN CHANGES
63	7-25-80			DESIGN CHANGES
64	7-25-80			DESIGN CHANGES
65	7-25-80			DESIGN CHANGES
66	7-25-80			DESIGN CHANGES
67	7-25-80			DESIGN CHANGES
68	7-25-80			DESIGN CHANGES
69	7-25-80			DESIGN CHANGES
70	7-25-80			DESIGN CHANGES
71	7-25-80			DESIGN CHANGES
72	7-25-80			DESIGN CHANGES
73	7-25-80			DESIGN CHANGES
74	7-25-80			DESIGN CHANGES
75	7-25-80			DESIGN CHANGES
76	7-25-80			DESIGN CHANGES
77	7-25-80			DESIGN CHANGES
78	7-25-80			DESIGN CHANGES
79	7-25-80			DESIGN CHANGES
80	7-25-80			DESIGN CHANGES
81	7-25-80			DESIGN CHANGES
82	7-25-80			DESIGN CHANGES
83	7-25-80			DESIGN CHANGES
84	7-25-80			DESIGN CHANGES
85	7-25-80			DESIGN CHANGES
86	7-25-80			DESIGN CHANGES
87	7-25-80			DESIGN CHANGES
88	7-25-80			DESIGN CHANGES
89	7-25-80			DESIGN CHANGES
90	7-25-80			DESIGN CHANGES
91	7-25-80			DESIGN CHANGES
92	7-25-80			DESIGN CHANGES
93	7-25-80			DESIGN CHANGES
94	7-25-80			DESIGN CHANGES
95	7-25-80			DESIGN CHANGES
96	7-25-80			DESIGN CHANGES
97	7-25-80			DESIGN CHANGES
98	7-25-80			DESIGN CHANGES
99	7-25-80			DESIGN CHANGES
100	7-25-80			DESIGN CHANGES

16-1300-01 REFLECTICS S.C.B. 064530-01
 16-131-01 REFLECTICS S.C.B. 065030-02



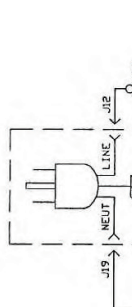
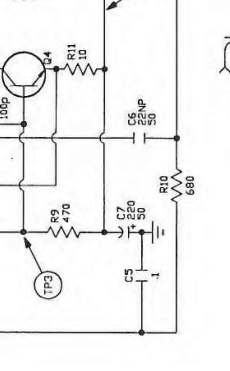
16-1300-01 REFLECTICS S.C.B. 064530-01
 16-131-01 REFLECTICS S.C.B. 065030-02

DESIGNATOR	DESCRIPTION	PART NUMBER
AP1-101	500 OHM TRIM	71-501-02
D1,2,5,8	IN746	21A146-01
D101,102,105	IN745	21A146-01
D3	IN4740	21A448-01
D4,7,18-20	IN914	21A914-01
D1,4,107,109	IN914	21A914-01
D10,11,110,111	IN914	21A914-01
D12-15	IN2993	21A593-01
D21	G175E	21-75E-01
D21	IN4749	21A449-01
D1,2,3,7,13	MP3 A56	96-056-01
D107,102,110	MP3 A56	96-056-01
C4,104	RN3440	96-340-01
C6,106	MP3 A56	96-056-01
C8,108	T1P 31C	96-031-03
C9,109	T1P 30C	96-030-03
C10,110	T1P 30C	96-030-03
C11,111	KJ15002	96-102-01
C12,112	J176	96-176-01
J1-9	1/4" CLIFF T/S	39-118-01
J6,106	1/4" CLIFF T/S	39-116-01
J8,107	1" CLIFF T/S	39-116-01
J9-21	250 FASTON TAB	17-896-01
J22	GROUND LUG	17-500-01



RIGHT CHANNEL SAME AS LEFT. ADD 100 TO DESIGNATORS EXCEPT FOR THE FOLLOWING: R7, R8, R34-R44, C3, C4, C5, C15, C17, C60-C66, D3, D12-D21, Q13, J1-J5, J8-JE2.

NOTES
 1) CAUTION: SHOCK HAZARDOUS!
 THIS UNIT CONTAINS HAZARDOUS VOLTAGE. DISCONNECT POWER AND BE SURE POWER SUPPLY IS DISCHARGED BEFORE TOUCHING INTERNAL PARTS.
 2) UNLESS NOTED, RESISTOR VALUES IN OHMS, 1/4W-5% TOL. CAPACITOR VALUES IN MICROFARADS, 50V-10% TOL.
 3) VOLTAGES ARE MEASURED WITH 1 MEGOHM OSCILLOSCOPE AND 10 MEGOHM DIGITAL VOLTMETER.
 4) CIRCUIT GROUND TO SWITCH GROUND CHASSIS GROUND.
 5) SET AP-1 & AP-101 FOR 3V ACROSS R26, R156 AND R127.



TEST POINTS	VOLTAGE (RMS)	VOLTAGE (DC)
1	.32	-15
2	.32	-15
3	.32	-15
4	.32	-15
5	4.2	-7
6	38.5	-19
7	38.5	-19
8	38.5	-19

CONDITIONS: TEST POINTS AND VOLTAGES TO BE IN CHANNELS BOTH

CAUTION: THIS SCHEMATIC IS PROVIDED FOR USE BY QUALIFIED PERSONNEL TO AVOID RISK OF ELECTRIC SHOCK. REFER SERVICING TO QUALIFIED SERVICE PERSONNEL. DO NOT PERFORM ANY SERVICING BEYOND THAT EXPLAINED IN THE OPERATING INSTRUCTIONS.

REV	DATE	BY	CHK'D	DESCRIPTION
4	10/26/91	TEXT		CHANGED DRAWING TITLE
3	7/7/93	SWR		CHANGED RES FROM 1.5K TO 1.5K (C-GR. REVISION ONLY)
2	10/7/91	MSA		SEE SHEET 1
1	9-13-90	ML		SEE SHEET 1

SIGNATURES	DATE	DESCRIPTION
<i>[Signature]</i>	7/26/93	DATE APPROVED FOR RELEASE
<i>[Signature]</i>	7/26/93	PROJECT NAME: GX-130C/GX-130CH
<i>[Signature]</i>	7-28-90	APP'D: TEK
<i>[Signature]</i>	7-28-90	ORIGINAL ISSUED:
<i>[Signature]</i>	10/20/92	DRAWING NAME: SCHEMATIC DRAWING
<i>[Signature]</i>	09-18-54	DRAWING NO: 16-130-01, 16-131-01
<i>[Signature]</i>	-1300114	SCALE: NONE
<i>[Signature]</i>		SHEET: 2 OF 2

16-130-01 REFLECTS P.C.B. 06A530-01
 16-131-01 REFLECTS P.C.B. 06A530-02

EXPORT WIRING

TEST POINTS	VOLTAGE (RMS)	VOLTAGE (DC)
1	.32	-15
2	.32	-15
3	.32	-15
4	.32	-15
5	4.2	-7
6	38.5	-19
7	38.5	-19
8	38.5	-19

CONDITIONS: TEST POINTS AND VOLTAGES TO BE IN CHANNELS BOTH