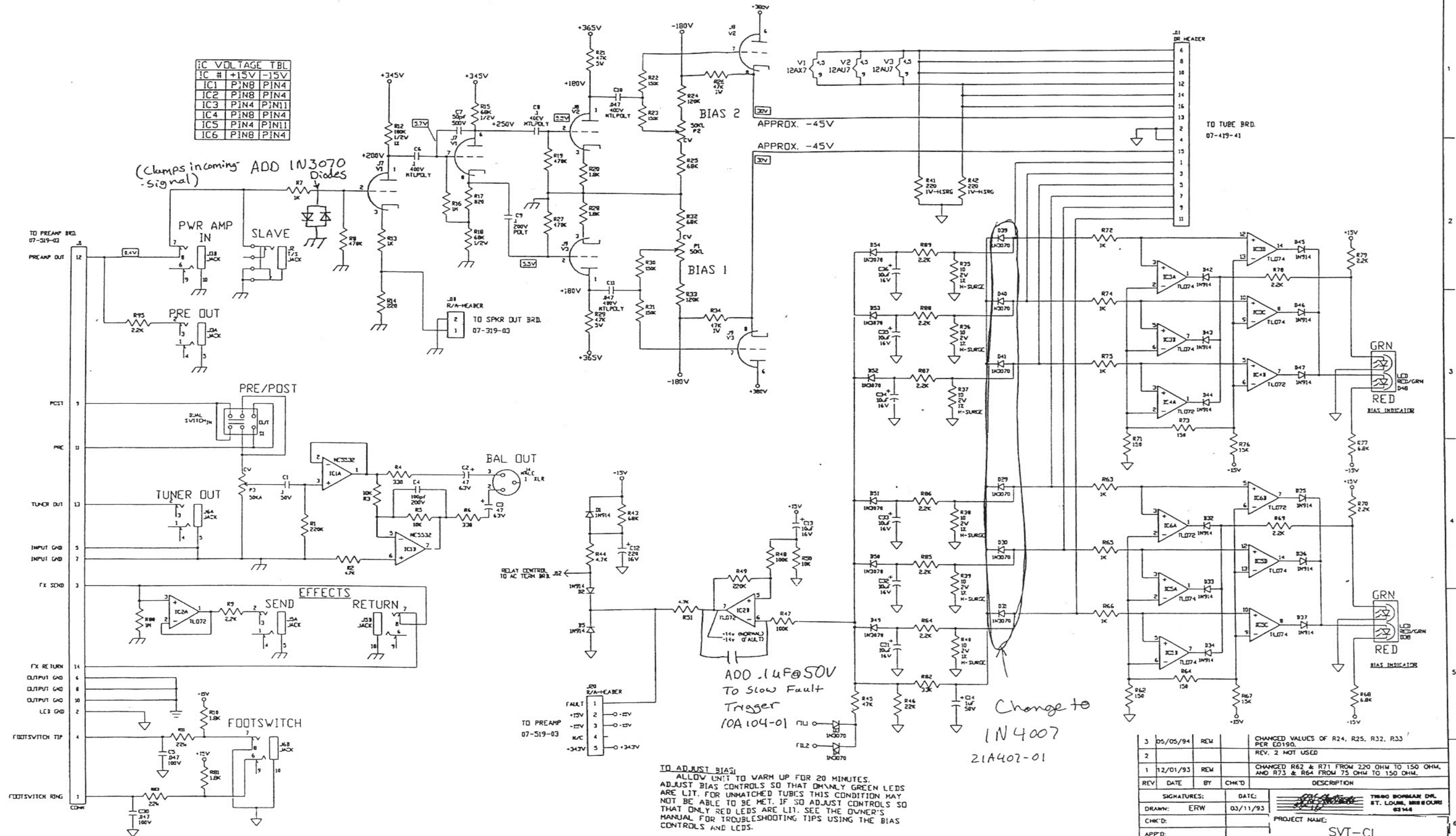
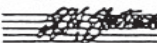


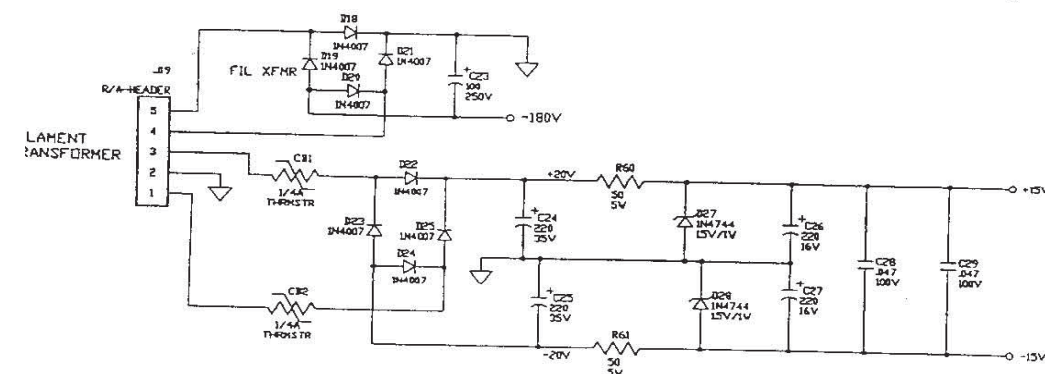
IC	VOLTAGE	TBL
IC #	+15V	-15V
IC1	PIN8	PIN4
IC2	PIN8	PIN4
IC3	PIN4	PIN11
IC4	PIN8	PIN4
IC5	PIN4	PIN11
IC6	PIN8	PIN4



3	05/05/94	REW		CHANGED VALUES OF R24, R25, R32, R33 PER ED190.
2				REV. 2 NOT USED
1	12/01/93	REW		CHANGED R62 & R71 FROM 220 OHM TO 150 OHM, AND R73 & R64 FROM 75 OHM TO 150 OHM.
REV	DATE	BY	CHK'D	DESCRIPTION
SIGNATURES:			DATE:	 TRUSS BORMANN CIV. ST. LOUIS, MISSOURI 63146
DRAWN: ERW			03/11/93	
CHK'D:				
APP'D:				
ORIGINAL ISSUED:				03/11/93
PLOT DATE:				06/16/94
PLOT TIME:				14:31:47
DRAWING				075419-03
				REV. 4




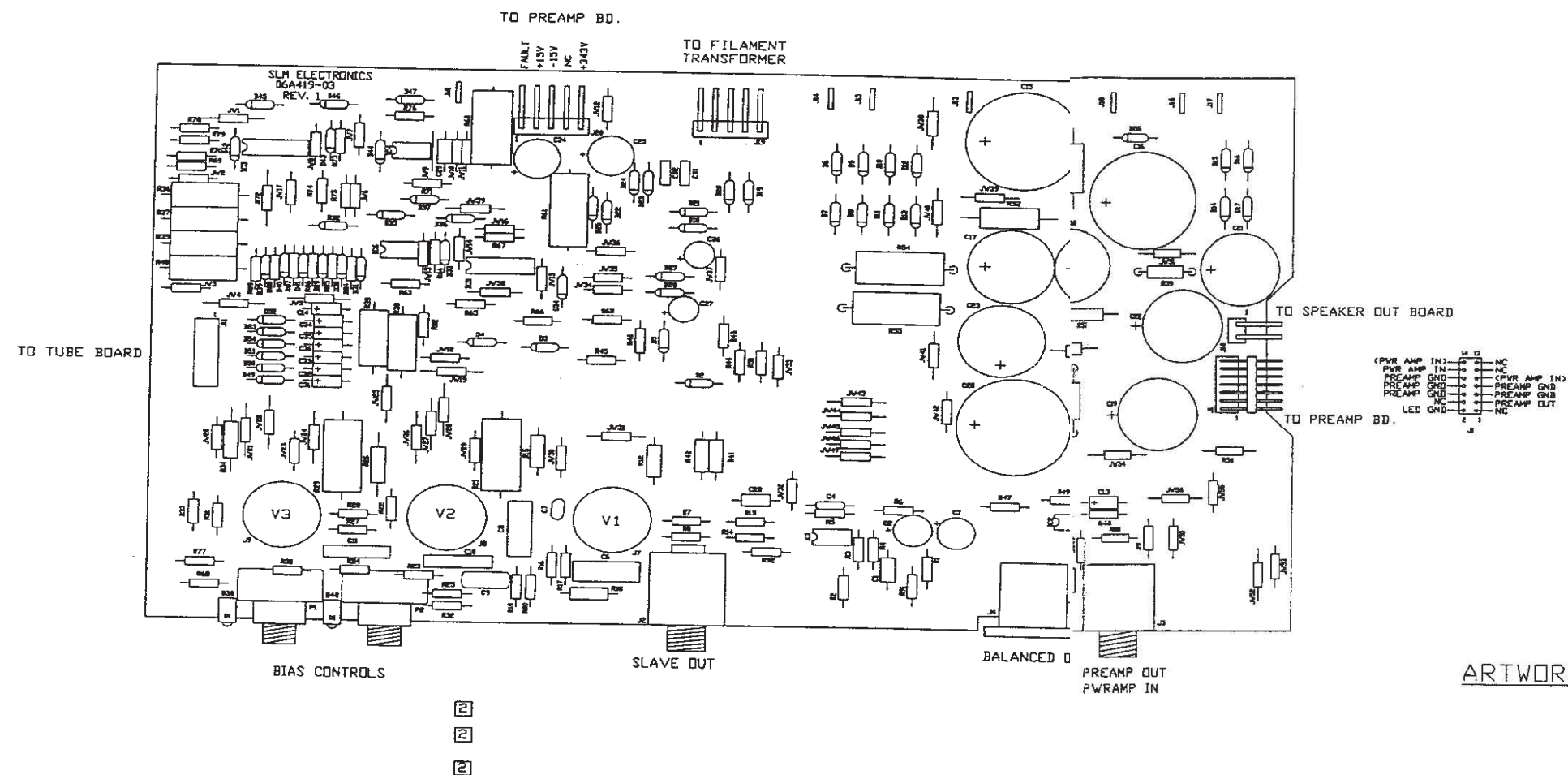





NOTES

- 1) CAUTION: SHOCK HAZARD!!  
THIS UNIT CONTAINS HAZARDOUS VOLTAGE. DISCONNECT POWER AND BE SURE POWER SUPPLY IS DISCHARGED BEFORE TOUCHING INTERNAL PARTS.
- 2) UNLESS NOTED, RESISTOR VALUE IN OHMS, 1/4W-5% TOL. CAPACITOR VALUES IN MICROFARADS, 50V-10% TOL.
- 3) VOLTAGES ARE MEASURED WITH MEGOHM OSCILLOSCOPE AND 10 MEGOHM DIGITAL VOLTMETER.
- 4) VOLTAGES IN RECTANGLES ARE P-S SIGNAL VOLTAGES WITH 0.4V IN. OTHER VOLTAGES ARE D.C. IN CONDITIONS STATED.
- 5) CIRCUIT GROUND  $\nabla$  DIRTY GROUND  $\nabla$  CHASSIS GROUND  $\perp$

3					
2	05/18/94	LJA		REV CHG TO REFLECT JUMPER CHG PER E150	
1	05/05/94	REN		CHANGED VALUES OF R24, R25, R32, R33 PER E0190.	
REV	DATE	BY	CHK'D	DESCRIPTION	
SIGNATURES:			DATE:		
DRAWN:	REW		11/15/93	 TISAO FORMAN DVL FT. LOUIS, MISSOURI E2448	
CHK'D:	GM		11/15/93	PROJECT NAME:	
APP'D:	GM		11/15/93	SVT-CL	
ORIGINAL ISSUED:			11/15/93	DRAWING NAME:	
PLOT DATE:			05/18/94	PWR OPS419 SCHEMATIC	
PLOT TIME:			11:30-31	DRAWING NO.	07S419-11
FILE NAME:			4191THZ2	SCALE:	~
				SHEET:	2 OF 2



**TO ADJUST BIAS:**  
 ALLOW UNIT TO WARM UP FOR 20 MINUTES.  
 ADJUST BIAS CONTROLS SO THAT ONLY THE GREEN LEDS  
 ARE LIT. FOR UNMATCHED TUBES THIS CONDITION MAY  
 NOT BE ABLE TO BE MET. IF SO ADJUST CONTROLS  
 SO THAT ONLY THE RED LEDS ARE LIT. SEE THE OWNER'S  
 MANUAL FOR TROUBLESHOOTING TIPS USING THE BIAS  
 CONTROLS AND LEDS.

3				
2	05/16/94	LMA		76-000-01 TO -05 PER E150
1	05/05/94	REM		CHANGED VALUES OF R24, R25, R32, R33 PER E0190.
REV	DATE	BY	CHK'D	DESCRIPTION
SIGNATURES:			DATE:	 1980 BORMAN DR. ST. LOUIS, MISSOURI 63146
DRAWN: REM		11/15/93		
CHK'D: RC		11/22/93		PROJECT NAME:
APP'D: GM		11/22/93		SVT-CL
ORIGINAL ISSUED:		11/15/93		DRAWING NAME:
PLOT DATE:		05/16/94		PWR AMP PICTORIAL
PLOT TIME:		11:25:48		DRAWING NO. 07S419-11
FILE NAME:		41911P2Z		REV. 2
		SCALE: 1:1		SHEET: 1 OF 2