



Features

- Standard or high torque option
- Long life carbon element
- Plain or knurled shaft option
- Brass bushing
- Metal shaft
- Audio or linear taper options
- Variety of resistance values



PDA24 - 24 mm Long Life Potentiometer

Electrical Characteristics

Taper.....Audio, linear
 Standard Resistance
from 10K to 1M ohms
 Standard Resistance Tolerance... ±15 %

Environmental Characteristics

Operating Temperature
 -10 °C to +70 °C
 Power Rating
 Linear Taper0.5 watt
 Audio Taper0.25 watt
 Maximum Operating Voltage
 Linear Taper500 V
 Audio Taper250 V
 Rotational Noise100 mV max.

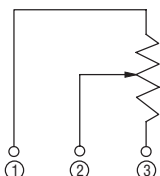
Mechanical Characteristics

Mechanical Angle300 ° ±5 °
 Rotational Torque
 Standard20 to 40 g-cm
 High70 to 100 g-cm
 Stop Strength7 kg-cm min.
 Rotational Life
200,000 shaft revolutions
 Soldering Condition
 Manual Soldering
300 °C within 3 seconds
 Wave Soldering
260 °C within 5 seconds
 HardwareOne flat washer and
 mounting nut supplied per
 potentiometer with bushing

Derating Curve

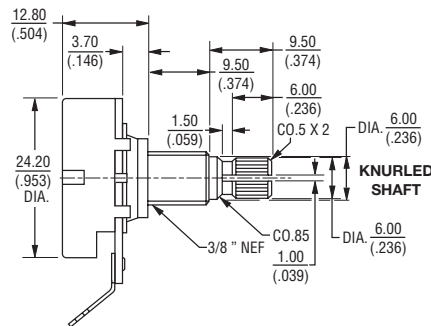


Circuit

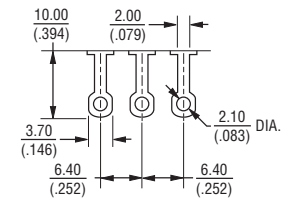
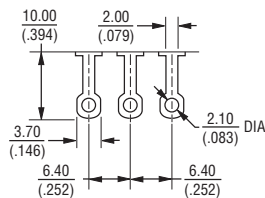
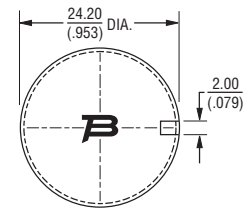
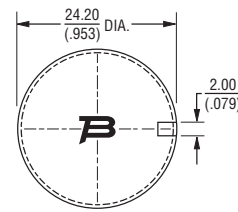
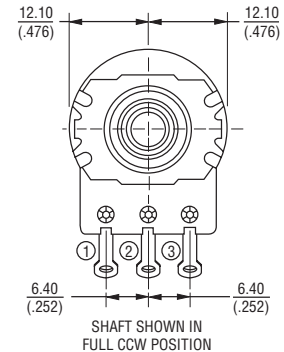
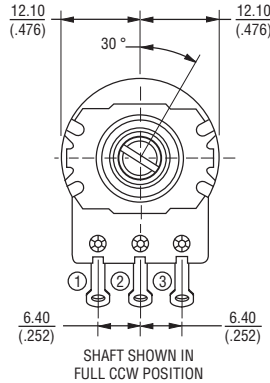
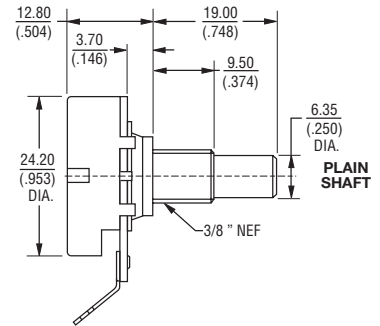


Product Dimensions

PDA241-xxx00,
 PDA241-xxx01



PDA241-xxx02



TOLERANCES:
 UNDER $\frac{10.0}{(.394)} = \frac{\pm 0.3}{(\pm 0.012)}$ $\frac{10.0 - 100}{(.394 - 3.937)} = \frac{\pm 0.5}{(\pm 0.020)}$

TOLERANCES:
 UNDER $\frac{10.0}{(.394)} = \frac{\pm 0.3}{(\pm 0.012)}$ $\frac{10.0 - 100}{(.394 - 3.937)} = \frac{\pm 0.5}{(\pm 0.020)}$

DIMENSIONS: $\frac{\text{MM}}{\text{(INCHES)}}$

*RoHS Directive 2002/95/EC Jan 27 2003 including Annex.
 Specifications are subject to change without notice.
 Customers should verify actual device performance in their specific applications.

Additional Features

- Long life
- Long solder lugs
- ±15 % resistance tolerance
- Anti-rotation pins
- RoHS compliant*

Applications

- Electric guitars
- Bass guitars
- Guitar amplifiers

PDA24 - 24 mm Long Life Potentiometer

BOURNS®

Tapers



Standard Resistance Table

Resistance (Ohms)	Resistance Code
10,000	103
25,000	253
50,000	503
100,000	104
250,000	254
300,000	304
500,000	504
1,000,000	105

How To Order

PDA24 1 - SRT 01 - 504 A2

Model _____

Number of Units _____
1 = Single

Torque Option _____
Standard = SRT
High = HRT

Configuration _____
00 = Knurled Shaft (18 Teeth) / Long Solder Lugs
01 = Knurled Shaft (24 Teeth) / Long Solder Lugs
02 = Plain Shaft / Long Solder Lugs

Resistance Code (See Table) _____

Resistance Taper (See Taper Charts) _____

BOURNS®

Asia-Pacific: Tel: +886-2 2562-4117 • Fax: +886-2 2562-4116

Europe: Tel: +41-41 768 5555 • Fax: +41-41 768 5510

The Americas: Tel: +1-951 781-5500 • Fax: +1-951 781-5700

www.bourns.com

REV. 08/10

Specifications are subject to change without notice.
Customers should verify actual device performance in their specific applications.

Mouser Electronics

Authorized Distributor

Click to View Pricing, Inventory, Delivery & Lifecycle Information:

Bourns:

[PDA241-HRT00-103A2](#) [PDA241-HRT00-103B0](#) [PDA241-HRT00-104A2](#) [PDA241-HRT00-104B0](#) [PDA241-HRT00-105A2](#) [PDA241-HRT00-105B0](#) [PDA241-HRT00-253A2](#) [PDA241-HRT00-253B0](#) [PDA241-HRT00-254A2](#) [PDA241-HRT00-254B0](#) [PDA241-HRT00-304A2](#) [PDA241-HRT00-304B0](#) [PDA241-HRT00-503A2](#) [PDA241-HRT00-503B0](#) [PDA241-HRT00-504A2](#) [PDA241-HRT00-504B0](#) [PDA241-HRT01-103A2](#) [PDA241-HRT01-103B0](#) [PDA241-HRT01-104A2](#) [PDA241-HRT01-104B0](#) [PDA241-HRT01-105A2](#) [PDA241-HRT01-105B0](#) [PDA241-HRT01-253A2](#) [PDA241-HRT01-253B0](#) [PDA241-HRT01-254B0](#) [PDA241-HRT01-304A2](#) [PDA241-HRT01-304B0](#) [PDA241-HRT01-503A2](#) [PDA241-HRT01-503B0](#) [PDA241-HRT01-504B0](#) [PDA241-HRT02-103A2](#) [PDA241-HRT02-103B0](#) [PDA241-HRT02-104A2](#) [PDA241-HRT02-104B0](#) [PDA241-HRT02-105A2](#) [PDA241-HRT02-105B0](#) [PDA241-HRT02-253A2](#) [PDA241-HRT02-253B0](#) [PDA241-HRT02-254A2](#) [PDA241-HRT02-254B0](#) [PDA241-HRT02-304A2](#) [PDA241-HRT02-304B0](#) [PDA241-HRT02-503A2](#) [PDA241-HRT02-503B0](#) [PDA241-HRT02-504A2](#) [PDA241-HRT02-504B0](#) [PDA241-SRT00-103A2](#) [PDA241-SRT00-103B0](#) [PDA241-SRT00-104A2](#) [PDA241-SRT00-104B0](#) [PDA241-SRT00-105A2](#) [PDA241-SRT00-105B0](#) [PDA241-SRT00-253A2](#) [PDA241-SRT00-253B0](#) [PDA241-SRT00-254A2](#) [PDA241-SRT00-254B0](#) [PDA241-SRT00-304A2](#) [PDA241-SRT00-304B0](#) [PDA241-SRT00-503A2](#) [PDA241-SRT00-503B0](#) [PDA241-SRT00-504A2](#) [PDA241-SRT00-504B0](#) [PDA241-SRT01-103A2](#) [PDA241-SRT01-103B0](#) [PDA241-SRT01-104A2](#) [PDA241-SRT01-104B0](#) [PDA241-SRT01-105A2](#) [PDA241-SRT01-105B0](#) [PDA241-SRT01-253A2](#) [PDA241-SRT01-253B0](#) [PDA241-SRT01-503A2](#) [PDA241-SRT01-503B0](#) [PDA241-SRT02-103A2](#) [PDA241-SRT02-103B0](#) [PDA241-SRT02-104A2](#) [PDA241-SRT02-104B0](#) [PDA241-SRT02-105A2](#) [PDA241-SRT02-105B0](#) [PDA241-SRT02-253A2](#) [PDA241-SRT02-253B0](#) [PDA241-SRT02-254A2](#) [PDA241-SRT02-503A2](#) [PDA241-SRT02-503B0](#) [PDA241-HRT01-254A2](#) [PDA241-HRT01-504A2](#) [PDA241-SRT01-254A2](#) [PDA241-SRT01-254B0](#) [PDA241-SRT01-304A2](#) [PDA241-SRT01-304B0](#) [PDA241-SRT01-504A2](#) [PDA241-SRT01-504B0](#) [PDA241-SRT02-254B0](#) [PDA241-SRT02-304A2](#) [PDA241-SRT02-304B0](#) [PDA241-SRT02-504A2](#) [PDA241-SRT02-504B0](#) [PDA241-HRT02-502B0](#)