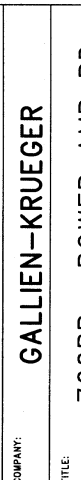
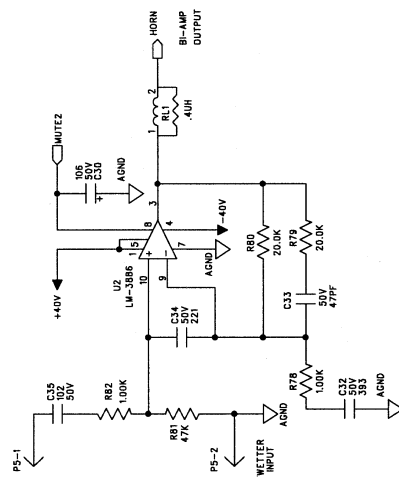
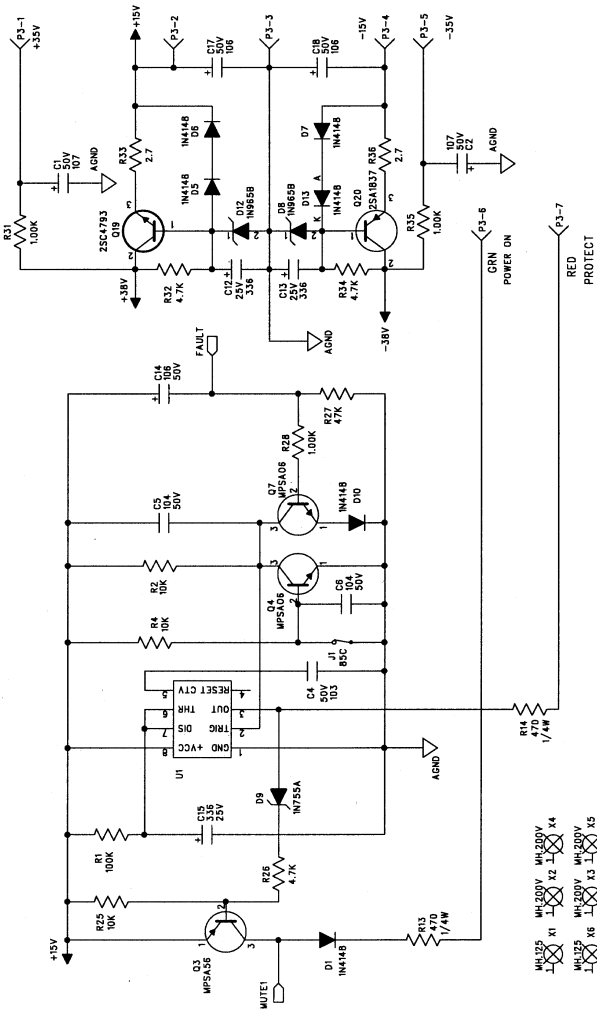
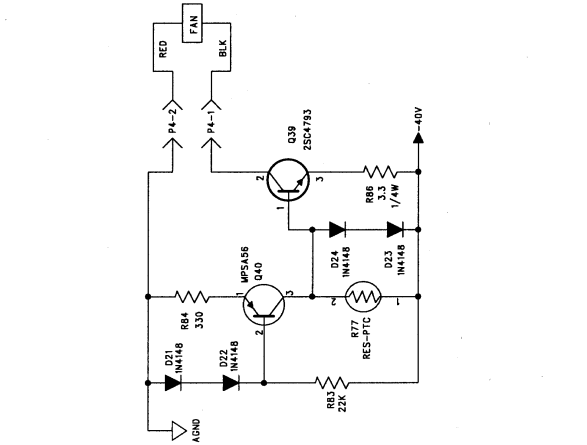


---



BIAS ADJUSTMENT PROCEDURE:  
WITH POWER OFF, ADJUST POT R23 TO FULL COUNTER-CLOCKWISE POSITION.  
TURN ON POWER AND WAIT 5 SECONDS FOR TURN ON DELAY.  
TURN R23 CLOCKWISE UNTIL VOLTAGE ACROSS P2 READS 5 mVDC.

COMPANY: <b>GALLIEN-KRUEGER</b>		TITLE: <b>700RB POWER AMP BD</b>	
DRAWING: <b>SANDY CHANG</b>	DATE: <b>7/31/98</b>		
CHECKED:	DATE:	CODE: <b>6104D</b>	SIZE: <b>C</b>
QUALITY CONTROL:	DATE:	DRAWING NO: <b>406-0104-D</b>	REV: <b>D</b>
RELEASED:	DATE:	PART NO: <b>206-0104-D</b>	
SCALE:		SHEET 2 OF 2	



**GALLIEN-KRUEGER**

700RB POWER AMP BD

P. BD	-0104-D	REV: D
	-0104-D	
SHEET 2 OF 2		

DRAWN: SANDY CHANG	DATED: 7/31/98
CHECKED:	DATED:
QUALITY CONTROL:	DATED:
RELEASED:	DATED:

SHEET 2 OF 2