

TP	CONDITION 'A'	CONDITION 'B'	CONDITION 'C'
1			
2			
3			
4			
5			
6			
7			
8			
9*			

**Note Table**

1) CONDITION 'A': SOLO CHANNEL  
GAIN & LEVEL @ '10', SHAPE @ '5'.  
1kHz 130mV SINE WAVE INPUT

2) CONDITION 'B': OVERDRIVE CHANNEL  
GAIN & LEVEL @ '10', LOW, MID & HIGH @ '5'.  
1kHz 130mV SINE WAVE INPUT

3) CONDITION 'C': CLEAN CHANNEL  
VOLUME @ 10, LOW, MID, HIGH @ 5.  
1kHz 130mV SINE WAVE INPUT

\* FOR TEST POINT 9, PUT A 150 OHM RESISTOR FROM J6 TO J7.

RefDes	-15V	+15V
IC1	4	8
IC2	4	8
IC3	4	8
IC4	4	8
IC5	4	8

**CAUTION:**  
THIS SCHEMATIC IS PROVIDED FOR USE BY QUALIFIED PERSONNEL TO AVOID RISK OF ELECTRIC SHOCK. REFER SERVICING TO QUALIFIED SERVICE PERSONNEL. DO NOT PERFORM ANY SERVICING BEYOND THAT EXPLAINED IN THE OPERATING INSTRUCTIONS.

**NOTES:**

1) CAUTION: SHOCK HAZARD!! THIS UNIT CONTAINS HAZARDOUS VOLTAGE. DISCONNECT POWER AND BE SURE POWER SUPPLY IS DISCHARGED BEFORE TOUCHING INTERNAL PARTS.

2) UNLESS NOTED, RESISTOR VALUES IN OHMS, 1/4W-5% TOL. CAPACITOR VALUES IN MICROFARADS, 50V-10% TOL.

3) VOLTAGES ARE MEASURED WITH 1 MEGOHM OSCILLOSCOPE AND 10 MEGOHM DIGITAL VOLTMETER.

**ASSY P/N 07-199-01 65WATT VERSION**  
**ASSY P/N 07-199-02 120 WATT VERSION**

REV	Date	DESCRIPTION	Ecr(s)/Ecn(s)	Chgd By	Appvd by	Date
B	4/18/03	CHGD C36 FROM .1 TO .01UF		R00987	REM	
A	8/08/02	INITIAL ISSUE				

THE INFORMATION CONTAINED ON THIS DRAWING IS PROPRIETARY TO ST. LOUIS MUSIC, INC.

Signatures:	Date:
Drawn: REM	7/16/02
Checked: -	
Released:	

11880 Borman Drive, St. Louis, MO 63146

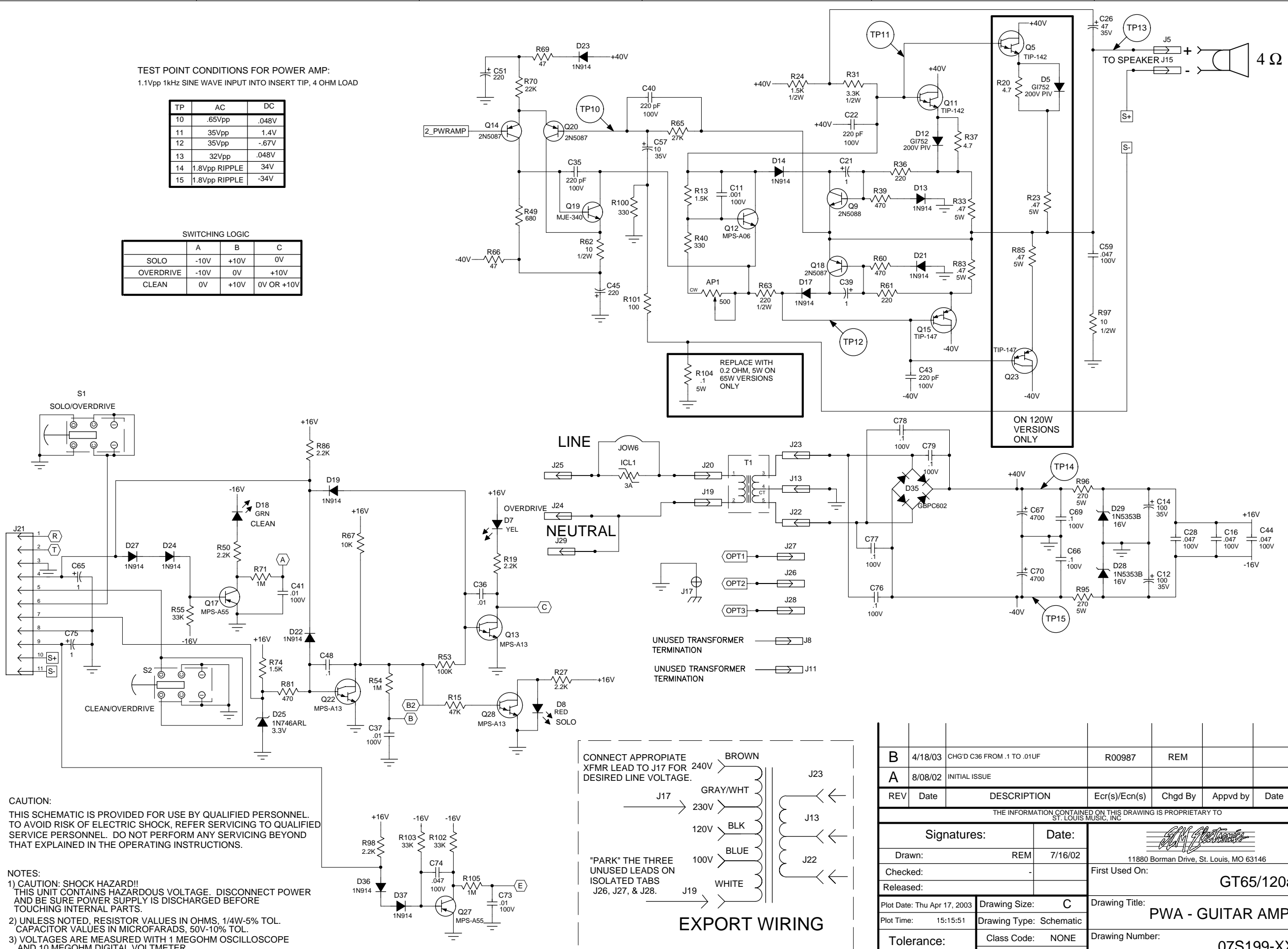
Plot Date: Thu Apr 17, 2003	Drawing Size: C	Drawing Title: PWA - GUITAR AMP
Plot Time: 15:15:50	Drawing Type: Schematic	Drawing Number: 07S199-XX
Tolerance:	Class Code: NONE	
	Sheet 1 of 2	

TEST POINT CONDITIONS FOR POWER AMP:  
1.1Vpp 1kHz SINE WAVE INPUT INTO INSERT TIP, 4 OHM LOAD

TP	AC	DC
10	.65Vpp	.048V
11	35Vpp	1.4V
12	35Vpp	-.67V
13	32Vpp	.048V
14	1.8Vpp RIPPLE	34V
15	1.8Vpp RIPPLE	-34V

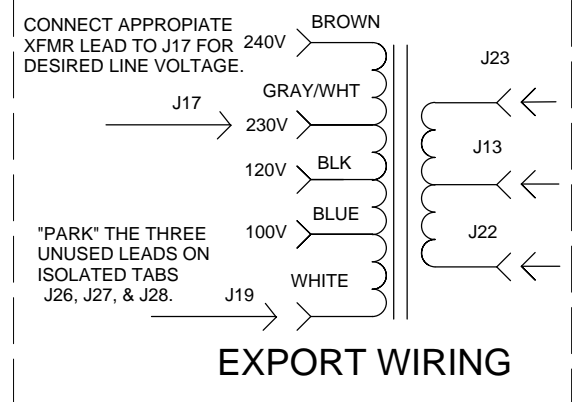
SWITCHING LOGIC

	A	B	C
SOLO	-10V	+10V	0V
OVERDRIVE	-10V	0V	+10V
CLEAN	0V	+10V	0V OR +10V



REPLACE WITH  
0.2 OHM, 5W ON  
65W VERSIONS  
ONLY

ON 120W  
VERSIONS  
ONLY



CAUTION:  
THIS SCHEMATIC IS PROVIDED FOR USE BY QUALIFIED PERSONNEL.  
TO AVOID RISK OF ELECTRIC SHOCK, REFER SERVICING TO QUALIFIED  
SERVICE PERSONNEL. DO NOT PERFORM ANY SERVICING BEYOND  
THAT EXPLAINED IN THE OPERATING INSTRUCTIONS.

NOTES:  
1) CAUTION: SHOCK HAZARD!!  
THIS UNIT CONTAINS HAZARDOUS VOLTAGE. DISCONNECT POWER  
AND BE SURE POWER SUPPLY IS DISCHARGED BEFORE  
TOUCHING INTERNAL PARTS.  
2) UNLESS NOTED, RESISTOR VALUES IN OHMS, 1/4W-5% TOL.  
CAPACITOR VALUES IN MICROFARADS, 50V-10% TOL.  
3) VOLTAGES ARE MEASURED WITH 1 MEGOHM OSCILLOSCOPE  
AND 10 MEGOHM DIGITAL VOLTMETER.

B	4/18/03	CHG'D C36 FROM .1 TO .01UF	R00987	REM		
A	8/08/02	INITIAL ISSUE				
REV	Date	DESCRIPTION	Ecr(s)/Ecn(s)	Chgd By	Appvd by	Date
THE INFORMATION CONTAINED ON THIS DRAWING IS PROPRIETARY TO ST. LOUIS MUSIC, INC.						
Signatures:		Date:		 11880 Borman Drive, St. Louis, MO 63146 First Used On: <b>GT65/120a</b>		
Drawn: REM		7/16/02				
Checked: -						
Released:				Drawing Title: <b>PWA - GUITAR AMP</b>		
Plot Date: Thu Apr 17, 2003		Drawing Size: <b>C</b>		Drawing Number: <b>07S199-XX</b>		
Plot Time: 15:15:51		Drawing Type: Schematic				
Tolerance:		Class Code: NONE				
		Sheet 2 of 2				