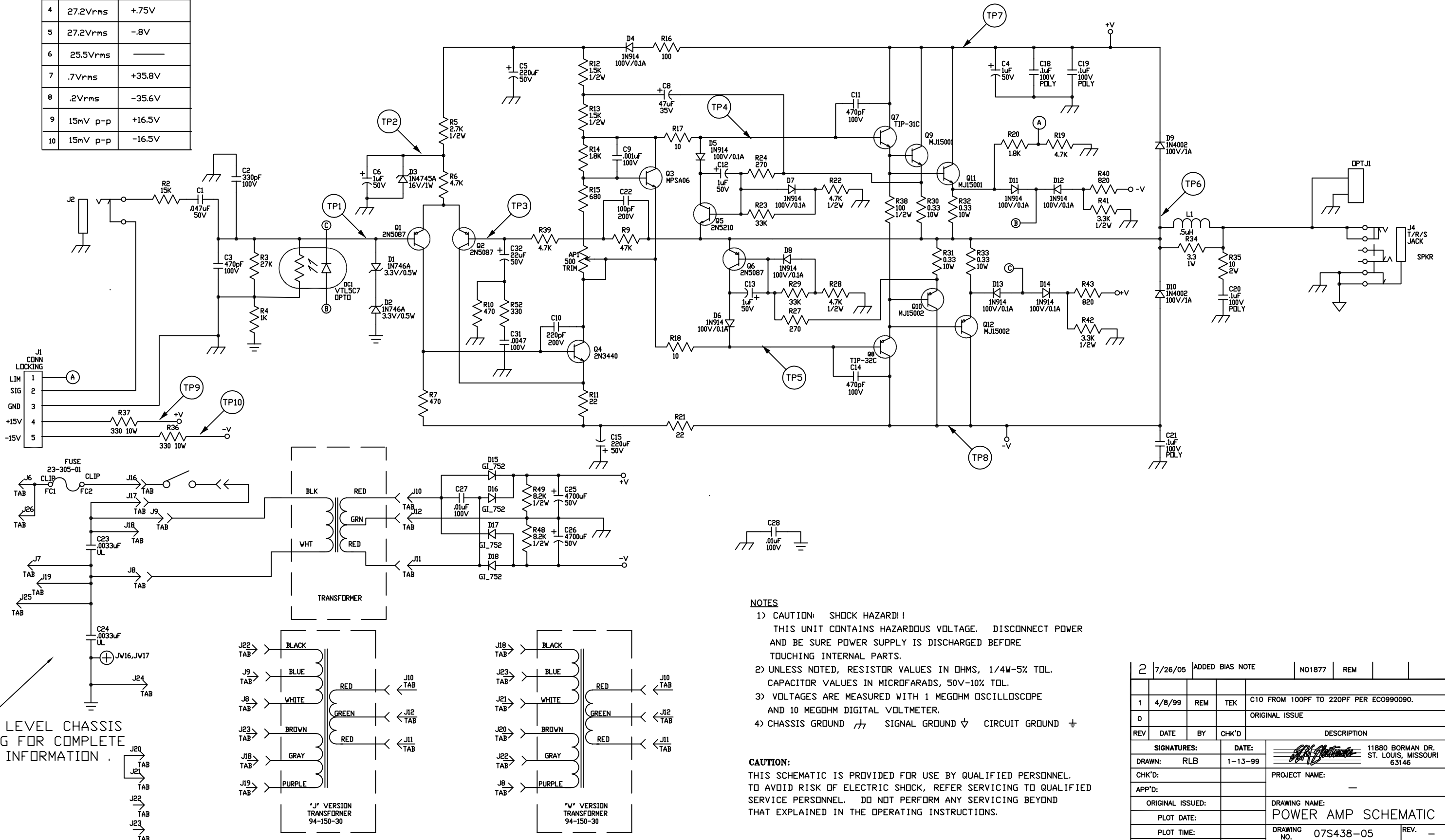



LEVEL CHASSIS FOR COMPLETE INFORMATION .

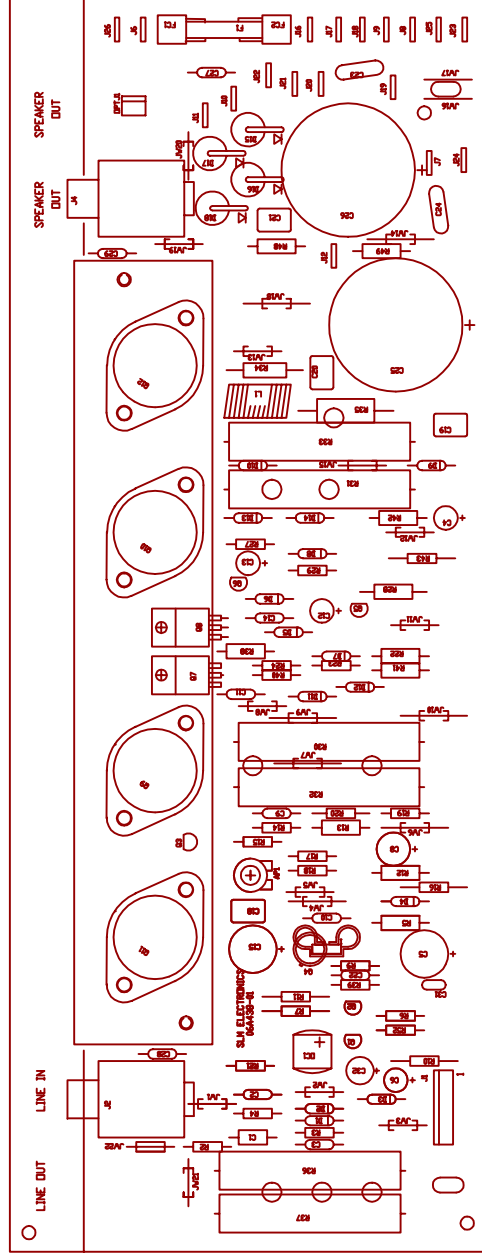
LEVEL CHASSIS
G FOR COMPLETE
INFORMATION .



- 1) CAUTION: SHOCK HAZARD!!
THIS UNIT CONTAINS HAZARDOUS VOLTAGE. DISCONNECT POWER
AND BE SURE POWER SUPPLY IS DISCHARGED BEFORE
TOUCHING INTERNAL PARTS.
- 2) UNLESS NOTED, RESISTOR VALUES IN OHMS, 1/4W-5% TOL.
CAPACITOR VALUES IN MICROFARADS, 50V-10% TOL.
- 3) VOLTAGES ARE MEASURED WITH 1 MEGOHM OSCILLOSCOPE
AND 10 MEGOHM DIGITAL VOLTMETER.
- 4) CHASSIS GROUND ∇ SIGNAL GROUND ∇ CIRCUIT GROUND ∇

CAUTION:
THIS SCHEMATIC IS PROVIDED FOR USE BY QUALIFIED PERSONNEL.
TO AVOID RISK OF ELECTRIC SHOCK, REFER SERVICING TO QUALIFIED
SERVICE PERSONNEL. DO NOT PERFORM ANY SERVICING BEYOND
THAT EXPLAINED IN THE OPERATING INSTRUCTIONS.

2	7/26/05	ADDED BIAS NOTE		N01877	REM		
1	4/8/99	REM	TEK	C10 FROM 100PF TO 220PF PER ECO990090.			
0				ORIGINAL ISSUE			
REV	DATE	BY	CHK'D	DESCRIPTION			
SIGNATURES:			DATE:	 11880 BORMAN DR. ST. LOUIS, MISSOURI 63146			
DRAWN: RLB		1-13-99					
CHK'D:							
APP'D:			PROJECT NAME: —				
ORIGINAL ISSUED:			DRAWING NAME:				
PLOT DATE:			POWER AMP SCHEMATIC				
PLOT TIME:			DRAWING NO. 07S438-05			REV.	—
FILE NAME:			SCALE: 1:1		SHEET: 1 OF 1		



DESIGNATOR	PART #	DESCRIPTION
AP1	71-501-02	500
C1	10A473-01	.047uF
C2	10A431-11	.330pF
C3	10A471-11	.470pF
C4	12R105-50	1uF
C5	12R227-02	220uF
C6	12R105-50	1uF
C8	12R475-35	.47uF
C9	10A102-11	.001uF
C10	10A221-21	220pF
C11	10A471-11	.470pF
C12	12R105-50	1uF
C13	12R105-50	1uF
C14	10A471-11	.470pF
C15	12R227-02	220uF
C18	10R104-03	1uF POLY
C19	10R104-03	1uF POLY
C20	10R104-03	1uF POLY
C21	10R104-03	1uF POLY
C22	10A101-21	100pF
C23	10-332-01	.0033uF
C24	10-332-01	.0033uF
C25	12-478-52	4700uF
C26	12-478-52	4700uF
C27	10A102-11	.001uF

	C29-INSERT	JUMPER WIRE	P/N	76-000-XX		DESIGNATOR	PART #	DESCRIPTION
C31	10R472-01	0047			10V	Q1	96R587-01	2N5087
C32	12R226-50	22Cuf			50V	Q2	96R587-01	2N5087
D1	21A146-01		IN746A		3.3V	Q3	96R006-01	MP3A06
D2	21A146-01		IN746A		3.3V	Q4	96-340-01	2N3440
D3	21A145-01		IN4745A		16V	Q5	96RS10-01	2N3210
D4	21A914-01		IN914		100V	Q6	96R587-01	2N5087
D5	21A914-01		IN914		100V	Q7	96-031-03	TIP-31C
D6	21A914-01		IN914		100V	Q8	96-032-03	TIP-32C
D7	21A914-01		IN914		100V	Q9	96-101-01	MJ15001
D8	21A914-01		IN914		100V	Q10	96-102-01	MJ15002
D9	21A402-01		IN4002		100V	Q11	96-101-01	MJ15001
D10	21A402-01		IN4002		100V	Q12	96-102-01	MJ15002
D11	21A914-01		IN914		100V	R1	NIT USED	
D12	21A914-01		IN914		100V	R2	76-153-01	15K
D13	21A914-01		IN914		100V	R3	76-273-01	27K
D14	21A914-01		IN914		100V	R4	76-102-01	1K
D15	21-752-01		G1_752			R5	77-272-01	2.7K
D16	21-752-01		G1_752			R6	76-472-01	4.7K
D17	21-752-01		G1_752			R7	76-471-01	470
D18	21-752-01		G1_752			R9	76-473-01	47K
FC1	23-926-02		UNIVERSAL	FUSECLIP		R10	76-471-01	470
FC2	23-926-02		UNIVERSAL	FUSECLIP		R11	76-220-01	22
DPT J1	17-309-02		CDNN		LOCK	R12	77-152-01	1.5K
J1	17-309-05		CDNN		LOCK	R13	77-152-01	1.5K
J2	39-118-01		T/R/S		JACK	R14	76-182-01	1.8K
J3	NIT USED					R15	76-681-01	680
J4	39-118-01		T/R/S		JACK	R16	76-101-01	100
J5	NIT USED					R17	76-100-01	10
J6	17-836-01		TAB			R18	76-100-01	10
J7	17-836-01		TAB			R19	76-472-01	4.7K
J8	17-836-01		TAB			R20	76-182-01	1.8K
J9	17-836-01		TAB			R21	76-220-01	22
J10	17-836-01		TAB			R22	77-472-01	4.7K
J11	17-836-01		TAB			R23	76-333-01	33K
J12	17-836-01		TAB			R24	76-271-01	270
J15	17-836-01		TAB			R27	76-271-01	270
J16	NIT USED					R28	77-472-01	4.7K
J17	17-836-01		TAB			R29	76-333-01	33K
J18	17-836-01		TAB			R30	78-330-10	0.33
J19	17-836-01		TAB			R31	78-330-10	0.33
J20	17-836-01		TAB			R32	78-330-10	0.33
J21	17-836-01		TAB			R33	78-330-10	0.33
J22	17-836-01		TAB			R34	78-033-01	3.3
J23	17-836-01		TAB			R35	78-100-01	10
J24	17-836-01		TAB			R36	78-331-10	330
J25	17-836-01		TAB			R37	78-331-10	330
J26	17-836-01		TAB			R38	77-101-01	100
L1	94-141-01		5uH			R39	76-472-01	4.7K
						R40	76-821-01	820
						R41	77-332-01	3.3K
						R42	77-332-01	3.3K

DESIGNATOR	PART #	DESCRIPTION
R43	76-821-01	820
R48	77-822-01	8.2K
R49	77-822-01	8.2K
R52	76-331-01	330
JW1-15	76-000-XX	JUMPER
JW18-22	76-000-XX	JUMPER
JW16&17	76-000-05	JUMPER

NOTE : JW 1-15, 18-20 SEE SYSTEM BOM FOR PROPER DASH #
JW16, 17 MUST BE -05.

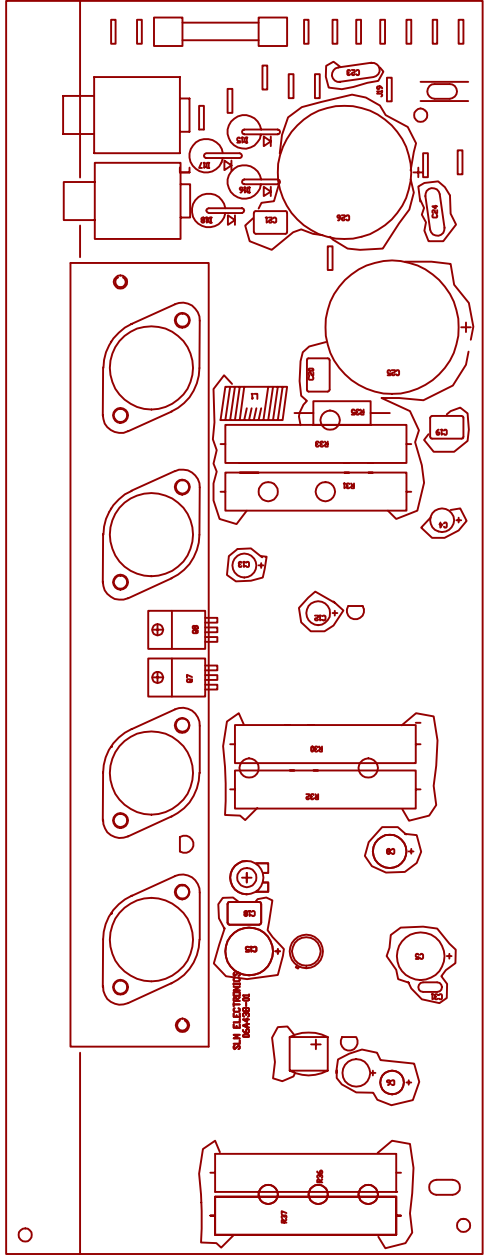
HARDWARE

30-408-52	4-40X1/2PPH M/S	2
30-442-52	4-40AF HEX NUT	2
30-650-53	6-32X1/2PPH M/S	10
30-700-01	6-32 HEX NUT	10
MISCELLANEOUS		
33-126-03	GX-210P HEATSINK	1
33-601-01	CLIP-DN HEATSINK	1
33-003-02	BG9005 INSULATOR	1
35-043-01	NYLON BUSHING	2
35-579-01	BG9005B INSULATOR	2
23-305-01	SA 3AG 250V FUSE	1
06A438-01	PC BOARD	1

[illegible]

R22	77-472-01	4.7K	1/2W
R23	76-333-01	33K	
R24	76-271-01	270	
R27	76-271-01	270	
R28	77-472-01	4.7K	1/2W
R29	76-333-01	33K	
R30	78-330-10	0.33	10W
R31	78-330-10	0.33	10W
R32	78-330-10	0.33	10W
R33	78-330-10	0.33	10W
R34	78-033-01	3.3	1W
R35	78-100-01	10	2W
R36	78-331-10	330	10W
R37	78-331-10	330	10W
R38	77-101-01	100	1/2W
R39	76-472-01	4.7K	
R40	76-821-01	820	1/2W
R41	77-332-01	3.3K	1/2W
R42	77-332-01	3.3K	1/2W

J8	17-836-01	TAB
J9	17-836-01	TAB
J10	17-836-01	TAB
J11	17-836-01	TAB
J12	17-836-01	TAB
J15	NOT USED	
J16	17-836-01	TAB
J17	17-836-01	TAB
J18	17-836-01	TAB
J19	17-836-01	TAB
J20	17-836-01	TAB
J21	17-836-01	TAB
J22	17-836-01	TAB
J23	17-836-01	TAB
J24	17-836-01	TAB
J25	17-836-01	TAB
J26	17-836-01	TAB
L1	94-141-01	. 5uH
DC1	66-100-01	VTL5C7



GOOP PARTS INDICATED AS SHOWN PER STANDARD PRACTICE.

SEE SHT 1 FOR REV HISTORY!

SIGNATURES:	DATE:	11880 BORMAN DR. ST. LOUIS, MISSOURI 63146
DRAWN: RLB	1-13-99	
CHK'D:		
APP'D:		
ORIGINAL ISSUED:		
PLOT DATE:		
PLOT TIME:		
FILE NAME:		

PROJECT NAME:	KX220a
DRAWING NAME:	GOOPED PARTS DWG
DRAWING NO.	07P438-05
REV.	-
SCALE:	1:1
SHEET:	2 OF 2