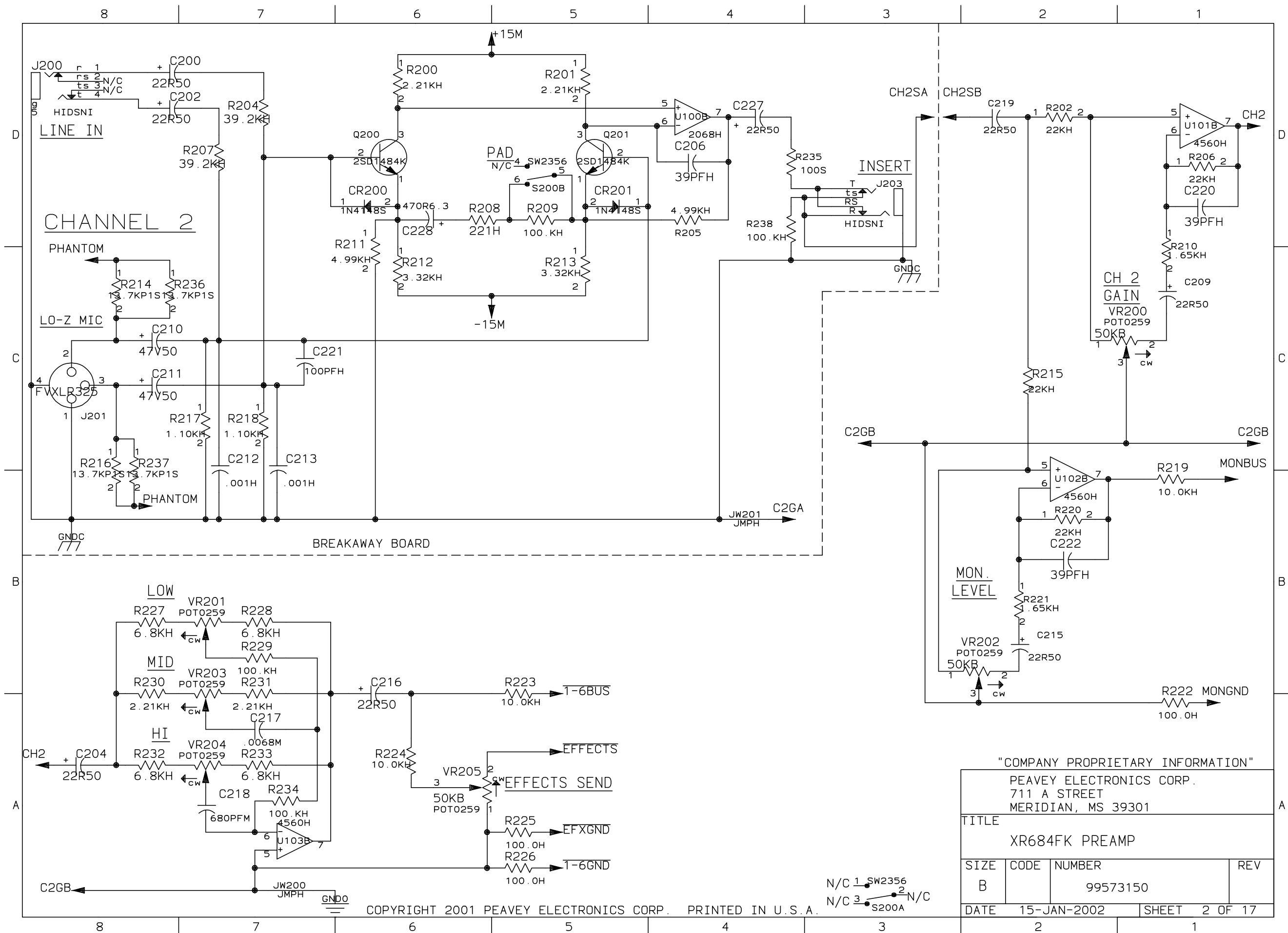


COPYRIGHT 2001 PEAVEY ELECTRONICS CORP. PRINTED IN U.S.A.

"COMPANY PROPRIETARY INFORMATION"			
PEAVEY ELECTRONICS CORP. 711 A STREET MERIDIAN, MS 39301			
TITLE XR684FK PREAMP			
SIZE B	CODE	NUMBER 99573150	REV
DATE	15-JAN-2002	SHEET	1 OF 17



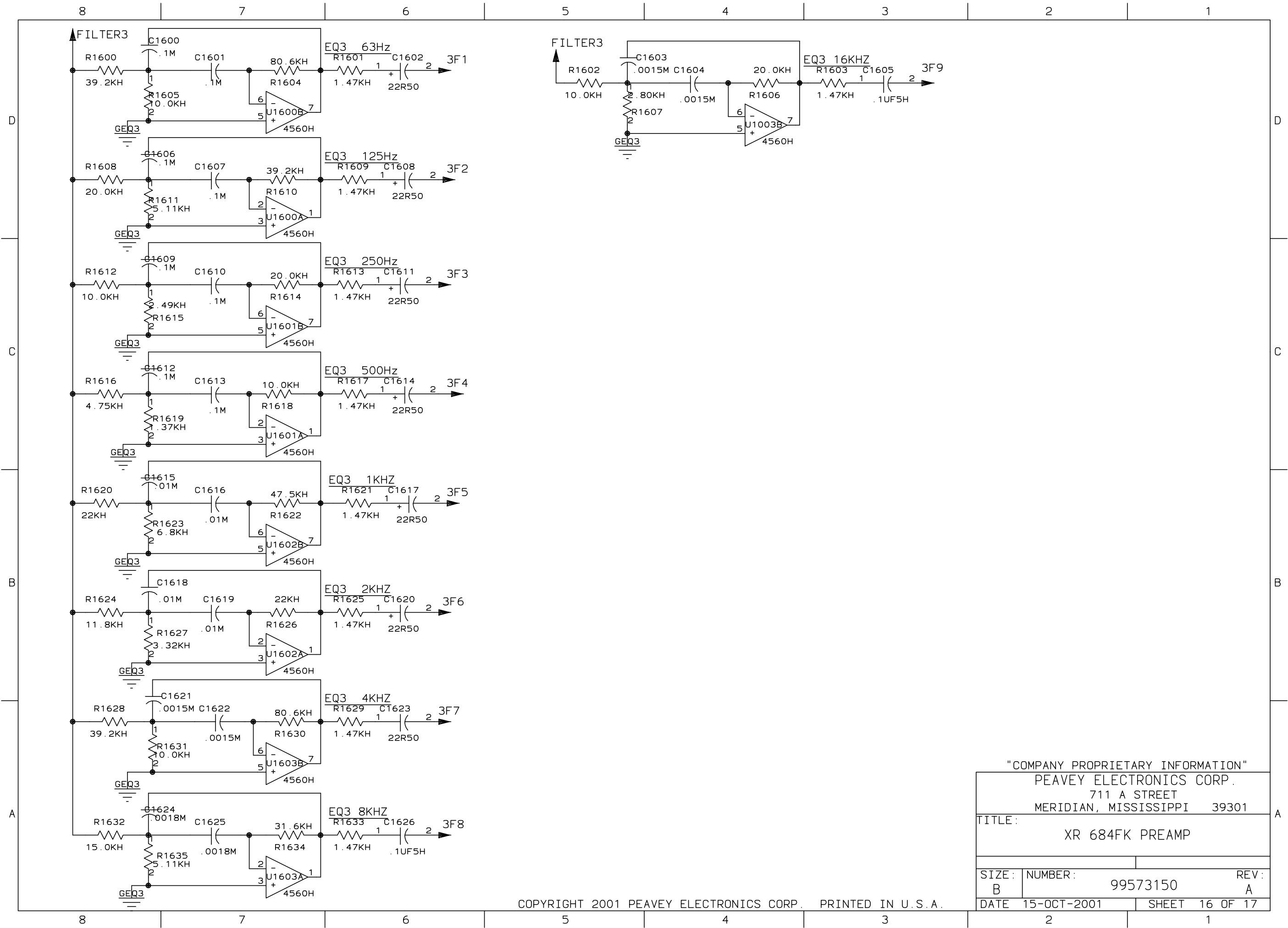
PEAVEY ELECTRONICS CORP.
711 A STREET
MERIDIAN, MS 39301

XR684FK PREAMP

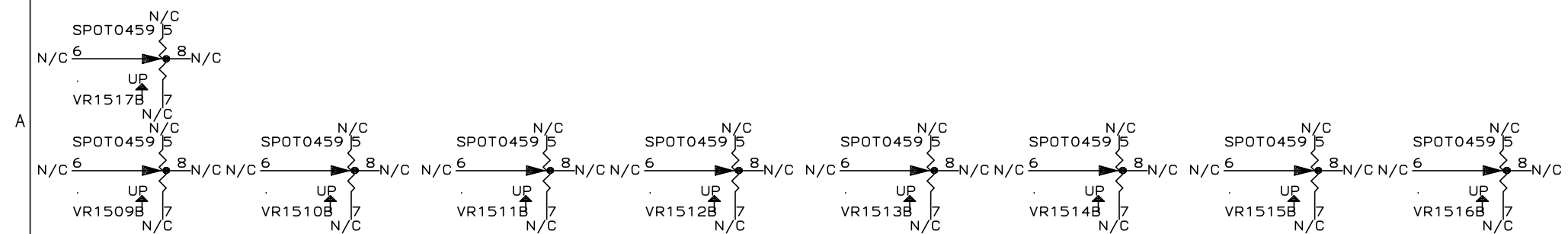
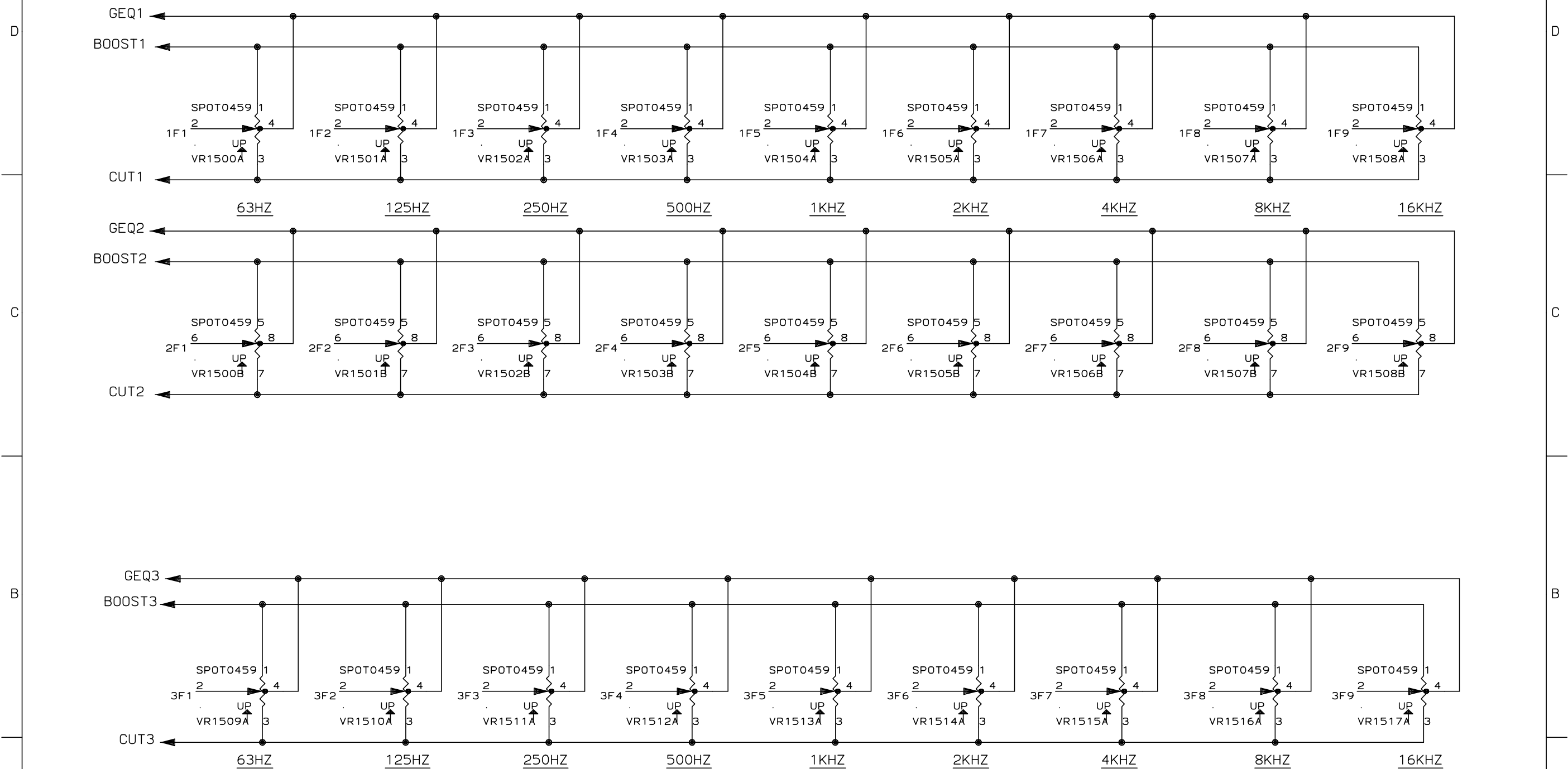
REV

SHEET 2 OF 17

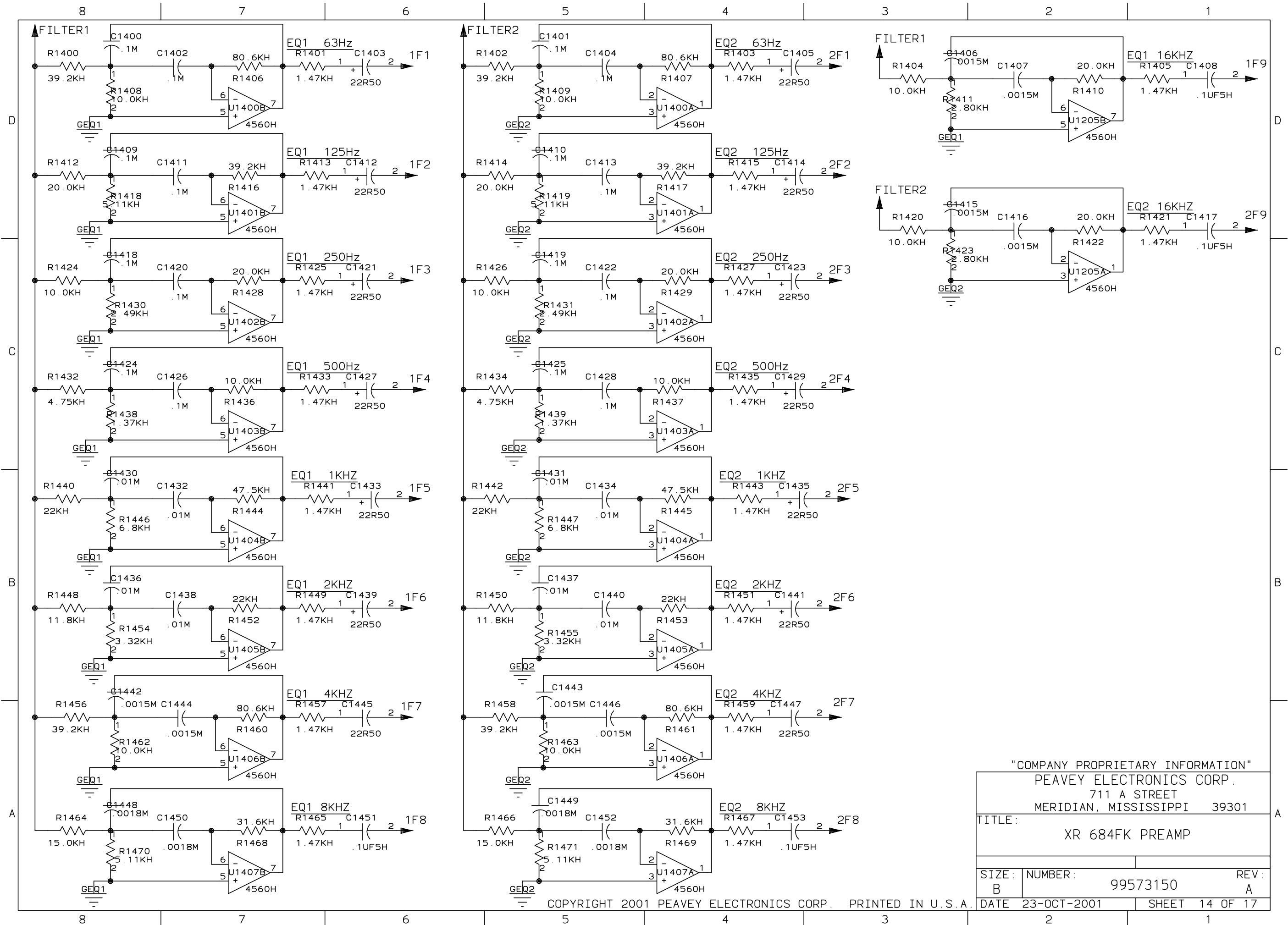
COPYRIGHT 2001 PEAVEY ELECTRONICS CORP. PRINTED IN U.S.A.



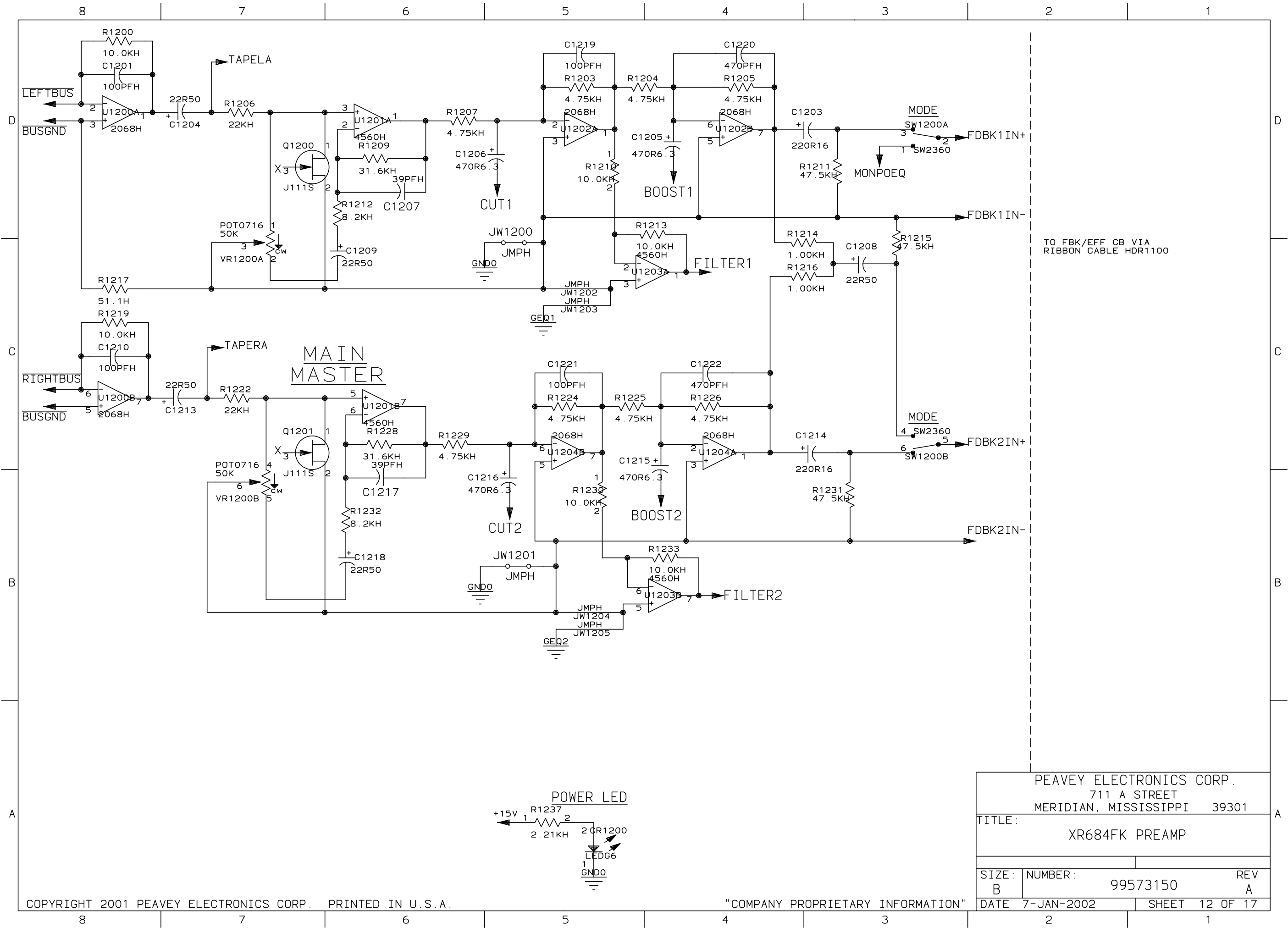
"COMPANY PROPRIETARY INFORMATION"		
PEAVEY ELECTRONICS CORP.		
711 A STREET		
MERIDIAN, MISSISSIPPI 39301		
TITLE: XR 684FK PREAMP		
SIZE: B	NUMBER: 99573150	REV: A
DATE 15-OCT-2001	SHEET 16 OF 17	



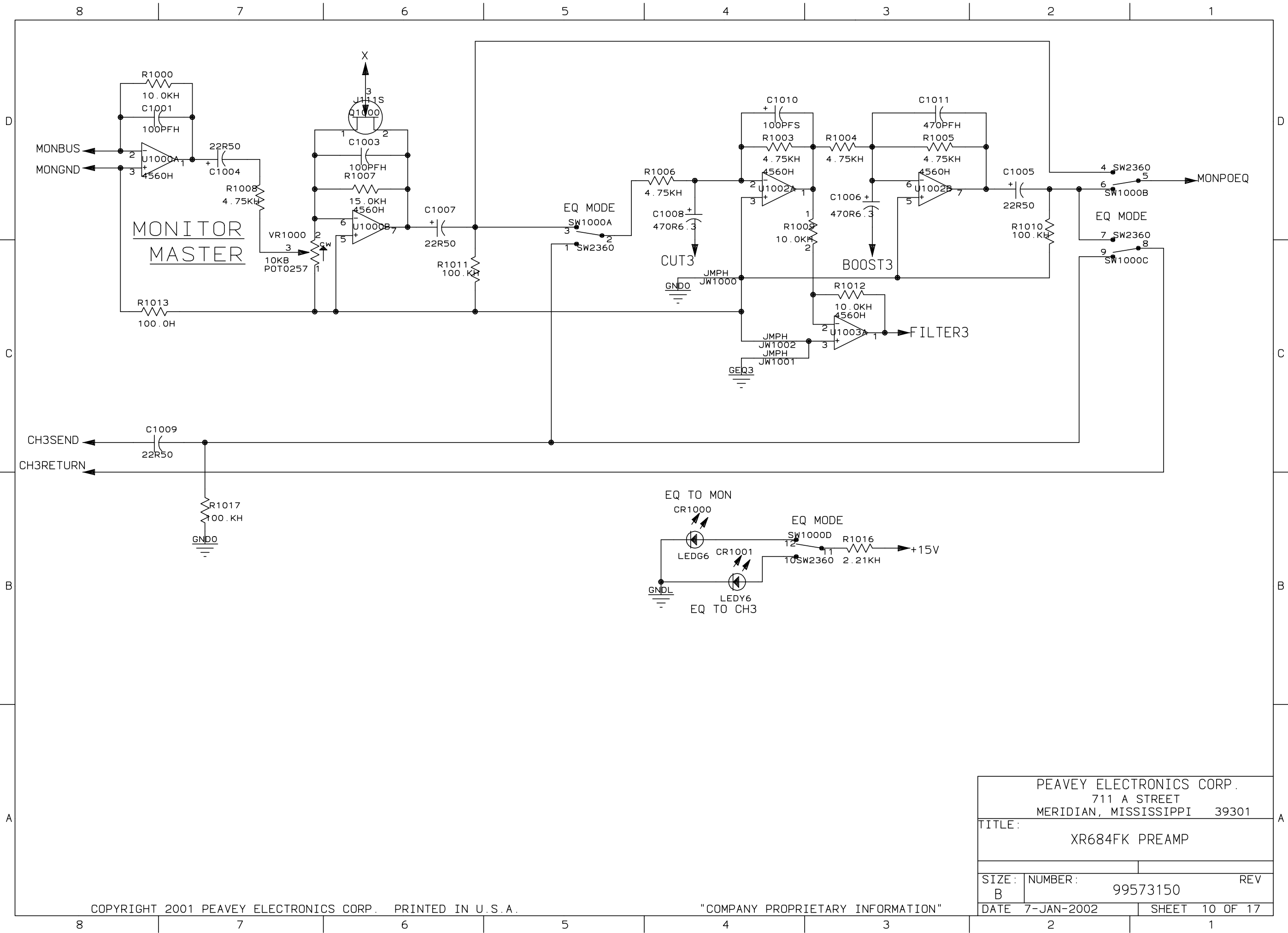
"COMPANY PROPRIETARY INFORMATION"		
PEAVEY ELECTRONICS CORP.		
711 A STREET		
MERIDIAN, MISSISSIPPI 39301		
TITLE: XR 684FK PREAMP		
SIZE: B	NUMBER: 99573150	REV:
DATE 15-JAN-2002	SHEET 15 OF 17	



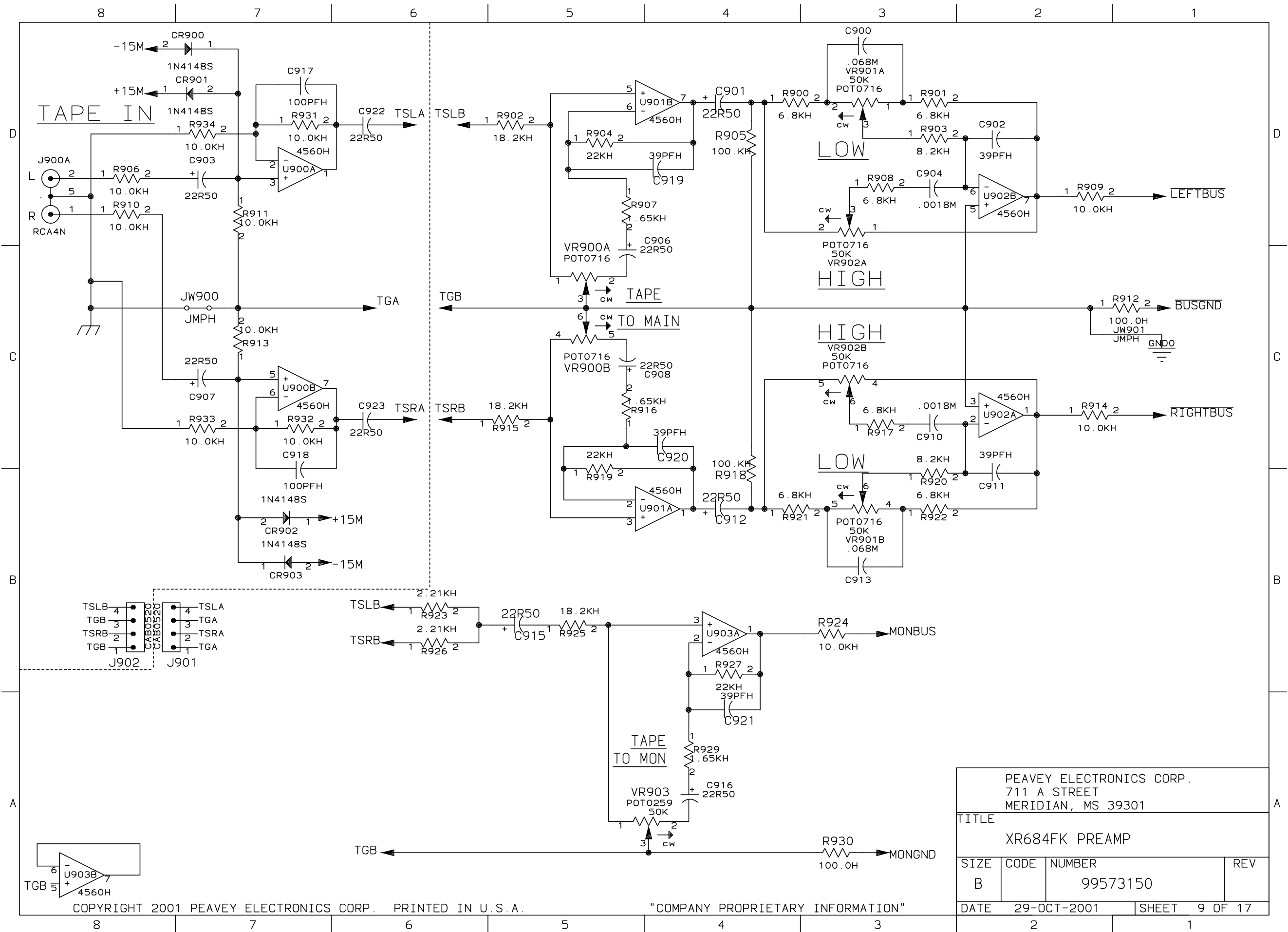
"COMPANY PROPRIETARY INFORMATION"		
PEAVEY ELECTRONICS CORP.		
711 A STREET		
MERIDIAN, MISSISSIPPI 39301		
TITLE: XR 684FK PREAMP		
SIZE: B	NUMBER: 99573150	REV: A
DATE: 23-OCT-2001	SHEET: 14 OF 17	



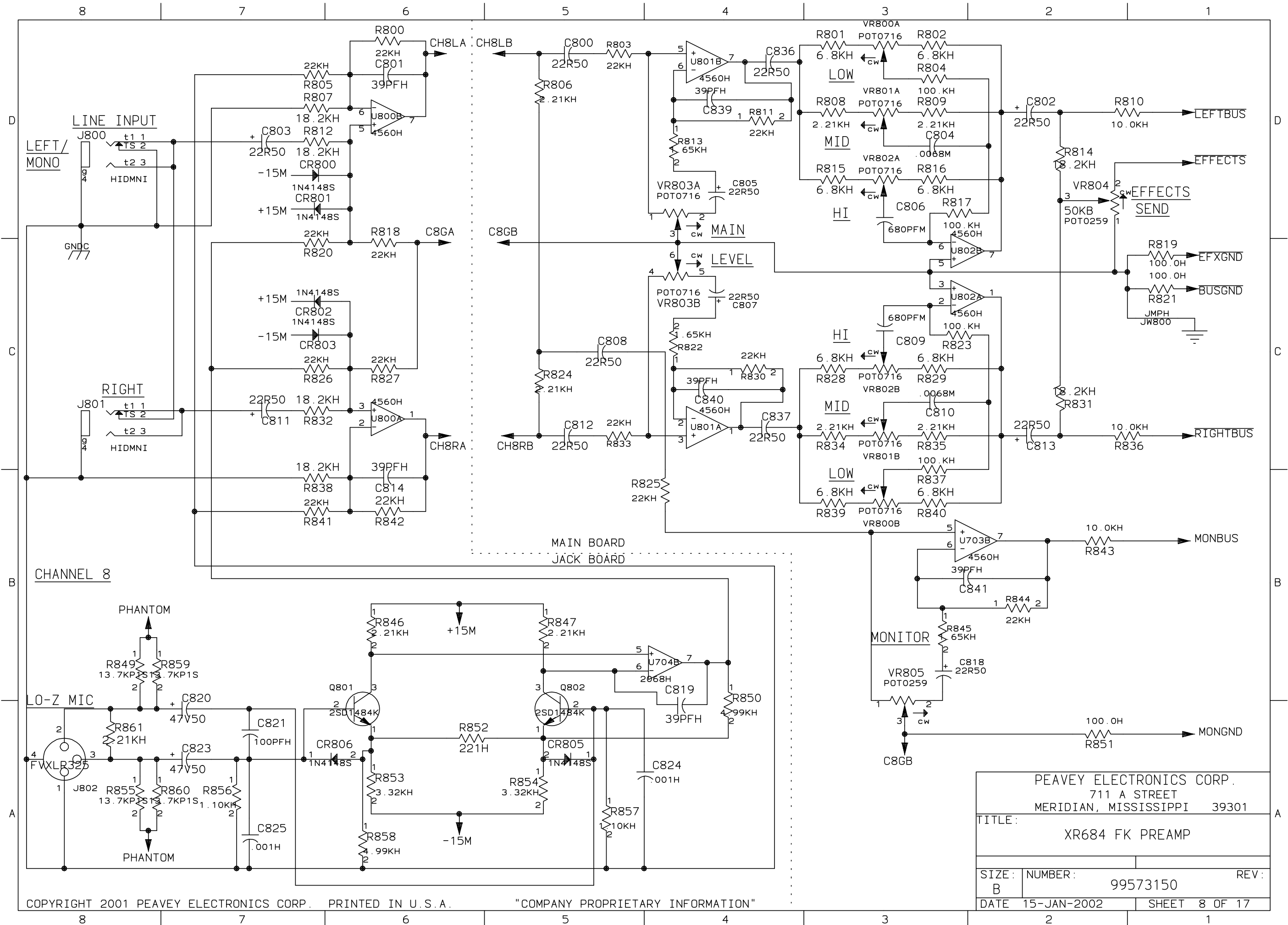
PEAVEY ELECTRONICS CORP. 711 A STREET MERIDIAN, MISSISSIPPI 39301		
TITLE: XR684FK PREAMP		
SIZE: B	NUMBER: 99573150	REV A
DATE: 7-JAN-2002	SHEET 12 OF 17	



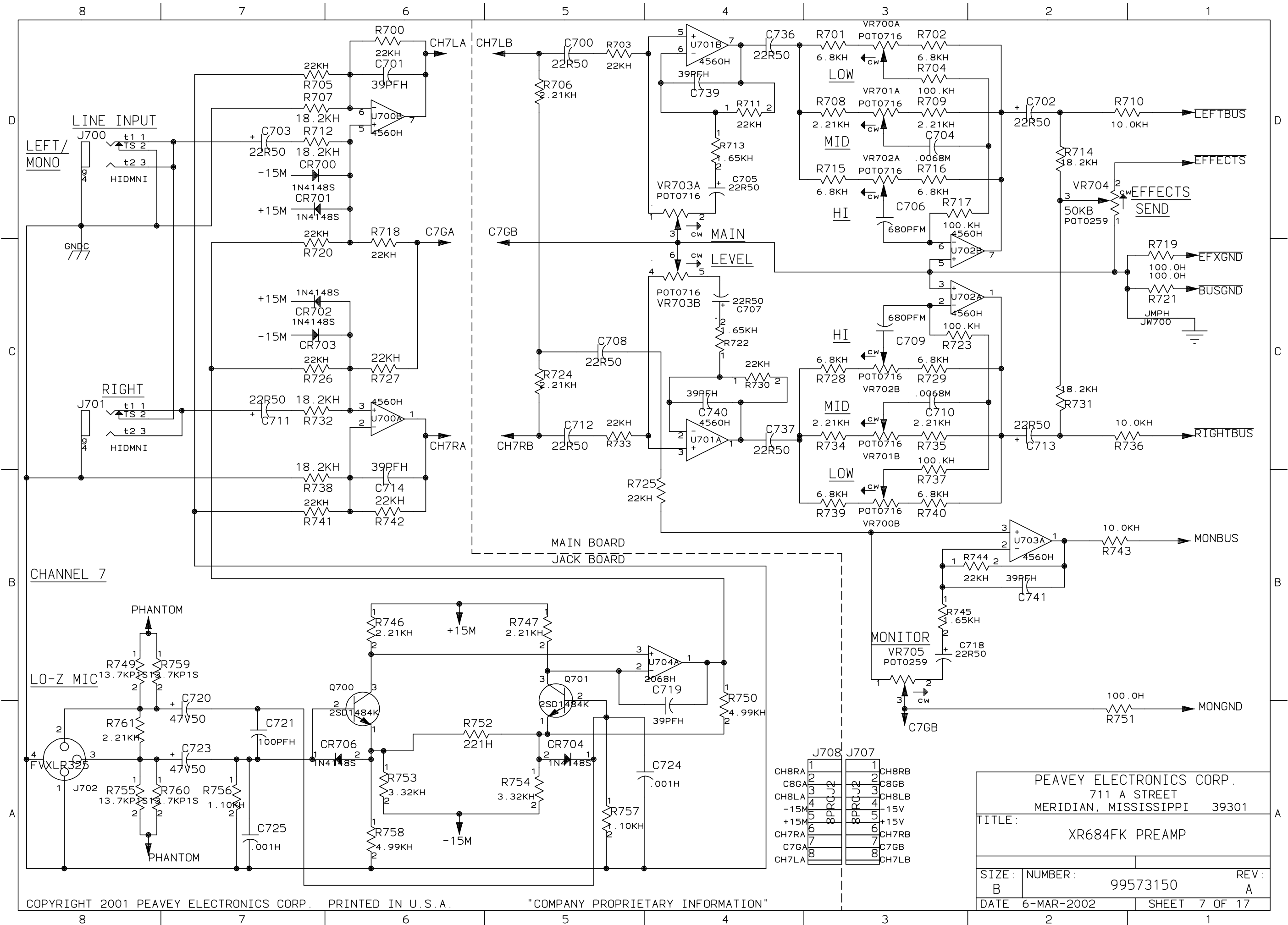
PEAVEY ELECTRONICS CORP. 711 A STREET MERIDIAN, MISSISSIPPI 39301		
TITLE: XR684FK PREAMP		
SIZE: B	NUMBER: 99573150	REV
DATE 7-JAN-2002	SHEET 10 OF 17	



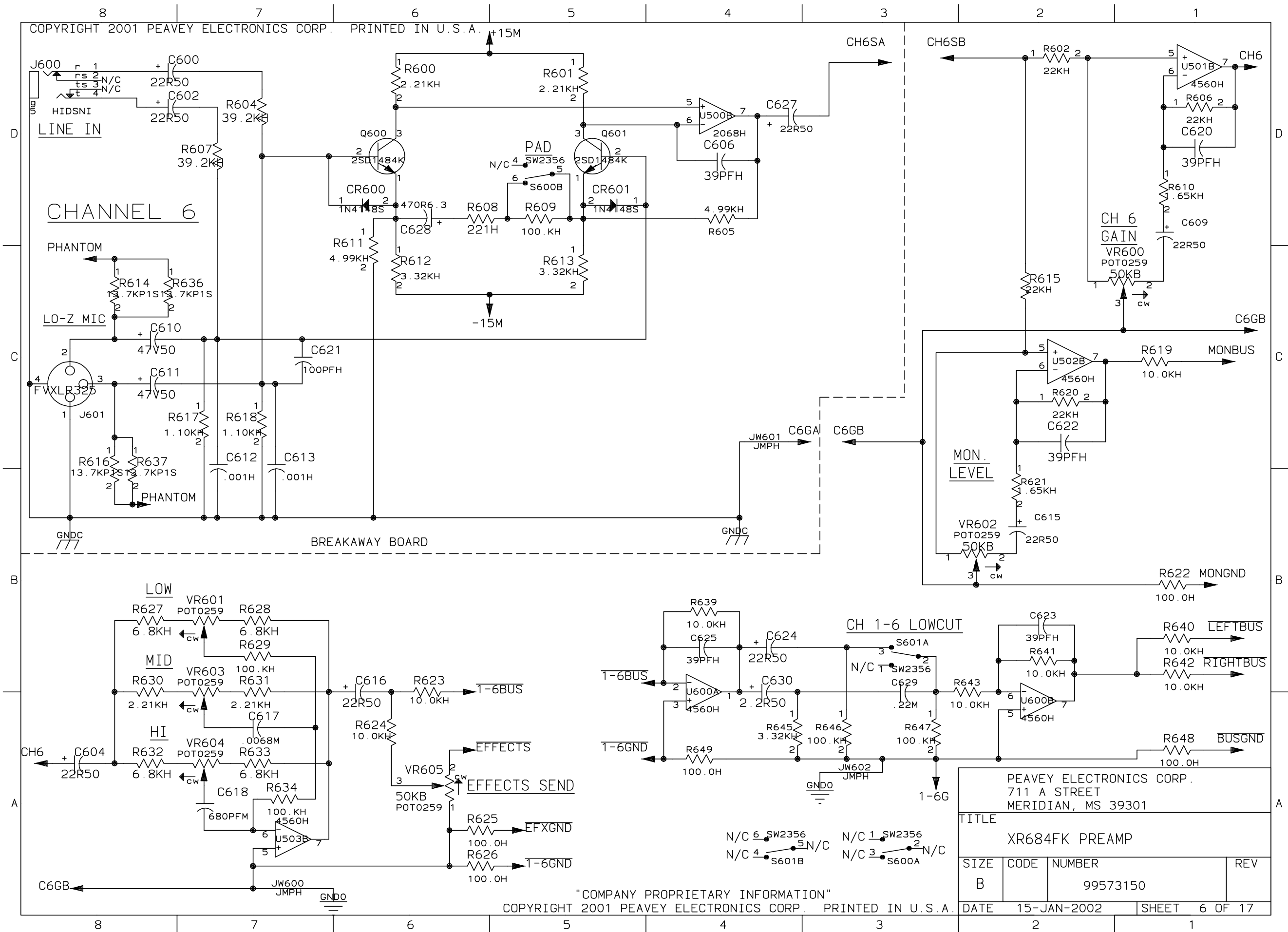
PEAVEY ELECTRONICS CORP. 711 A STREET MERIDIAN, MS 39301			
TITLE XR684FK PREAMP			
SIZE B	CODE	NUMBER 99573150	REV
DATE	29-OCT-2001	SHEET	9 OF 17

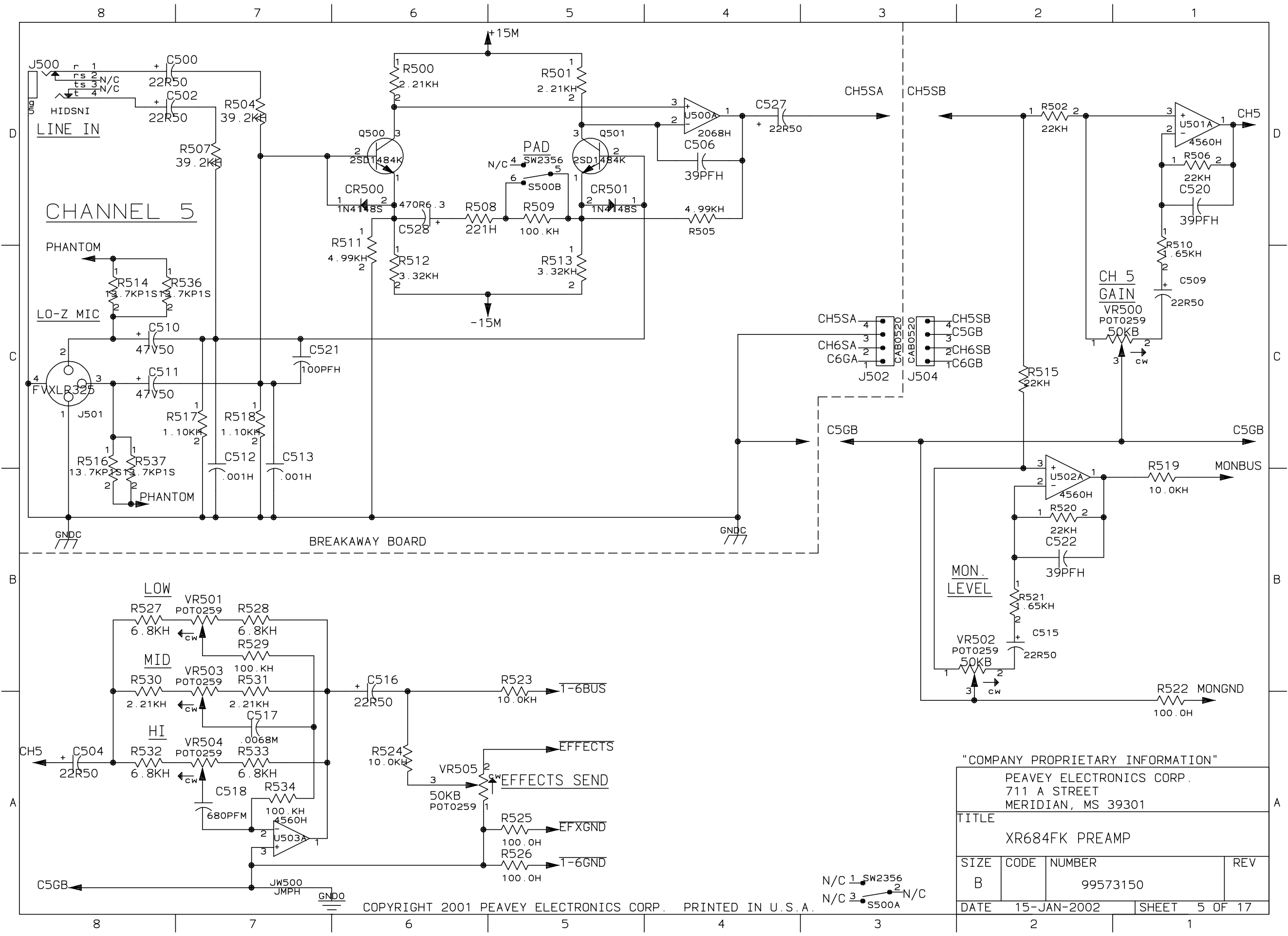


PEAVEY ELECTRONICS CORP. 711 A STREET MERIDIAN, MISSISSIPPI 39301		
TITLE: XR684 FK PREAMP		
SIZE: B	NUMBER: 99573150	REV: 1
DATE: 15-JAN-2002	SHEET 8 OF 17	



PEAVEY ELECTRONICS CORP. 711 A STREET MERIDIAN, MISSISSIPPI 39301		
TITLE: XR684FK PREAMP		
SIZE: B	NUMBER: 99573150	REV: A
DATE: 6-MAR-2002	SHEET 7 OF 17	



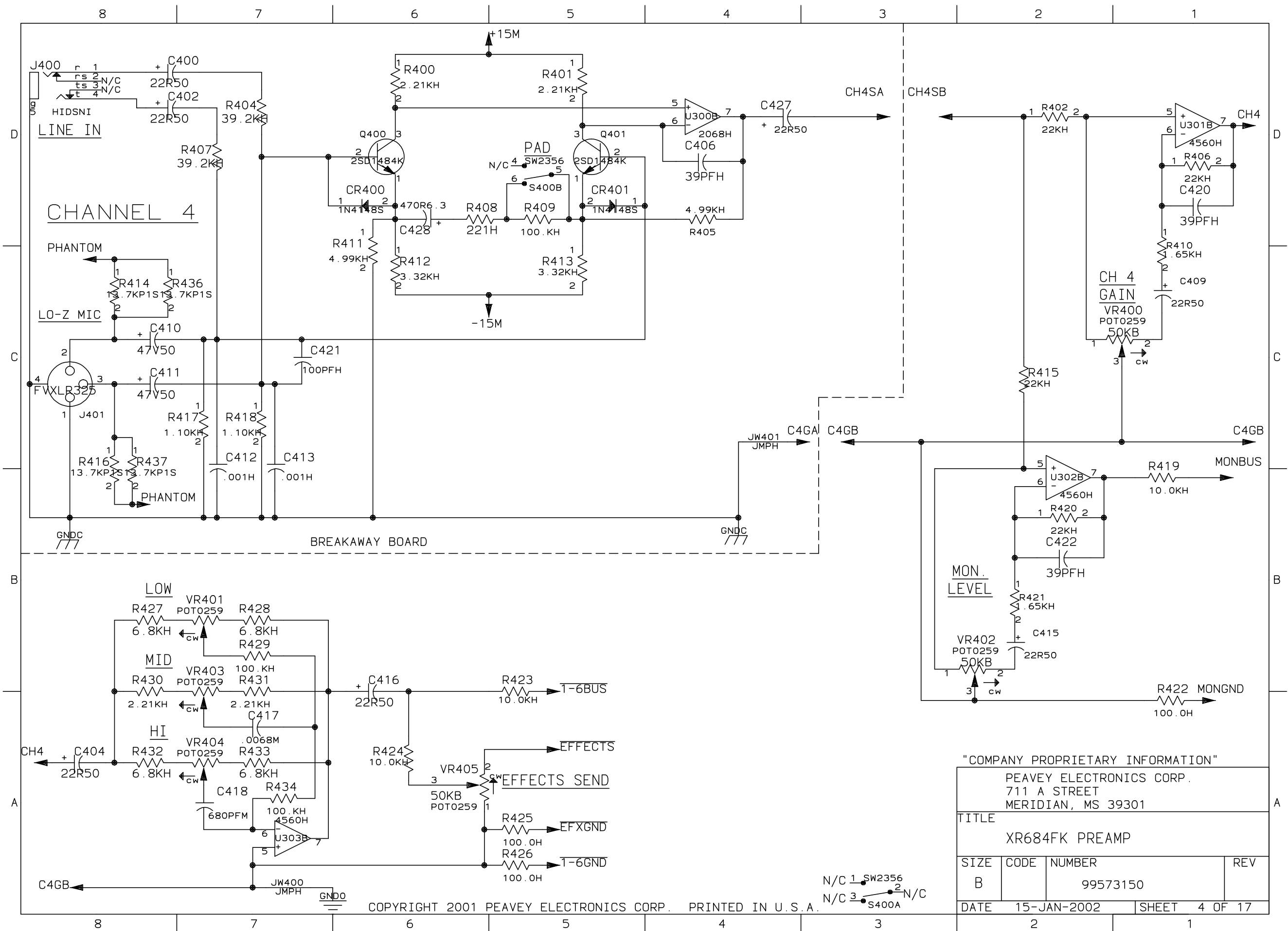


"COMPANY PROPRIETARY INFORMATION"

PEAVEY ELECTRONICS CORP.
711 A STREET
MERIDIAN, MS 39301

TITLE
XR684FK PREAMP

SIZE	CODE	NUMBER	REV
B		99573150	

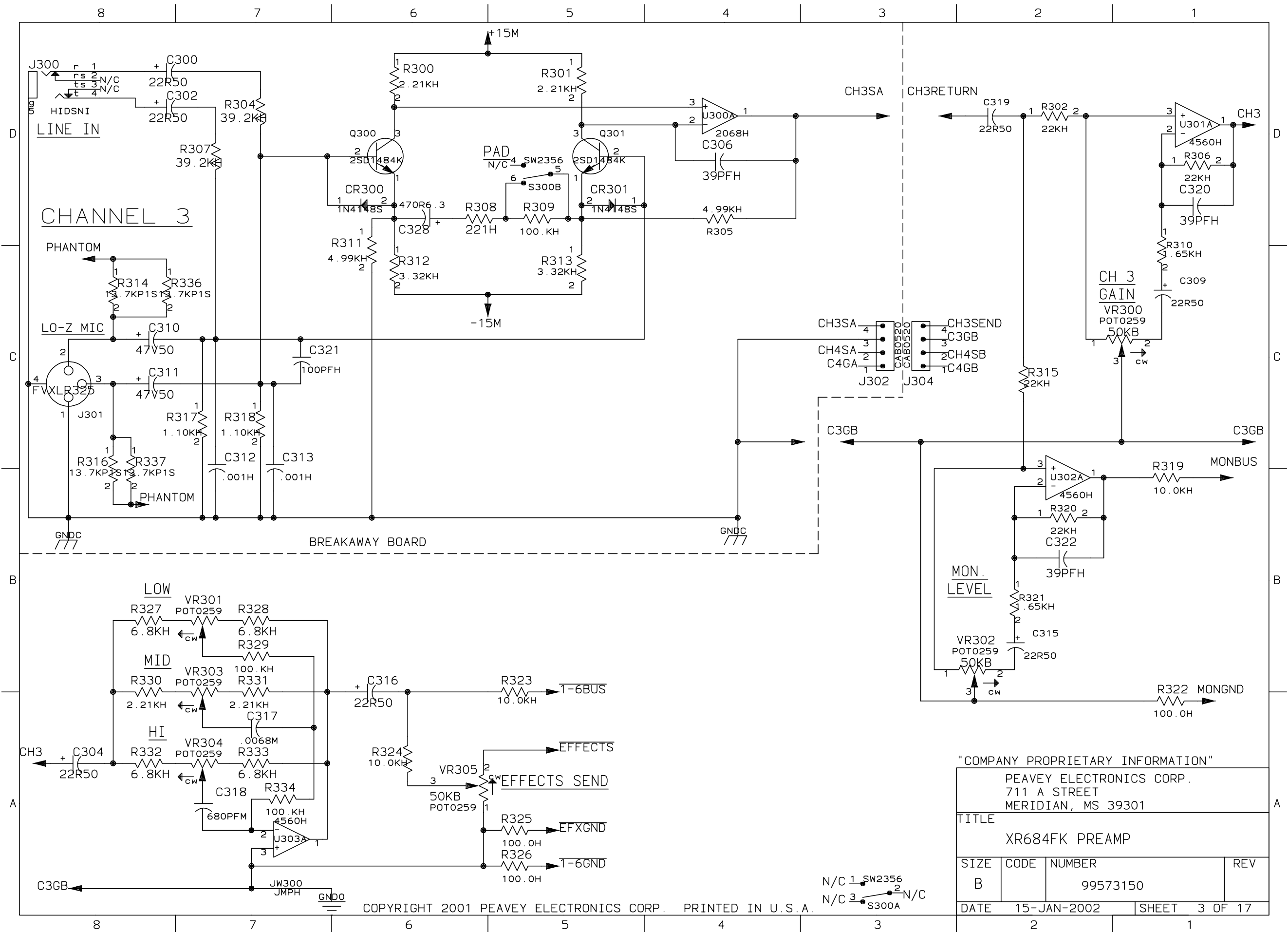


"COMPANY PROPRIETARY INFORMATION"

PEAVEY ELECTRONICS CORP.
711 A STREET
MERIDIAN, MS 39301

TITLE
XR684FK PREAMP

SIZE	CODE	NUMBER	REV
B		99573150	
DATE	15-JAN-2002	SHEET	4 OF 17



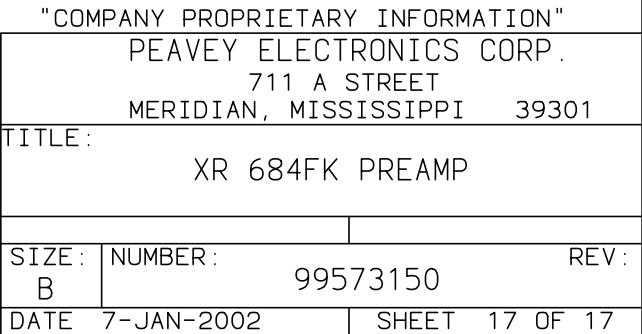
COPYRIGHT 2001 PEAVEY ELECTRONICS CORP. PRINTED IN U.S.A.

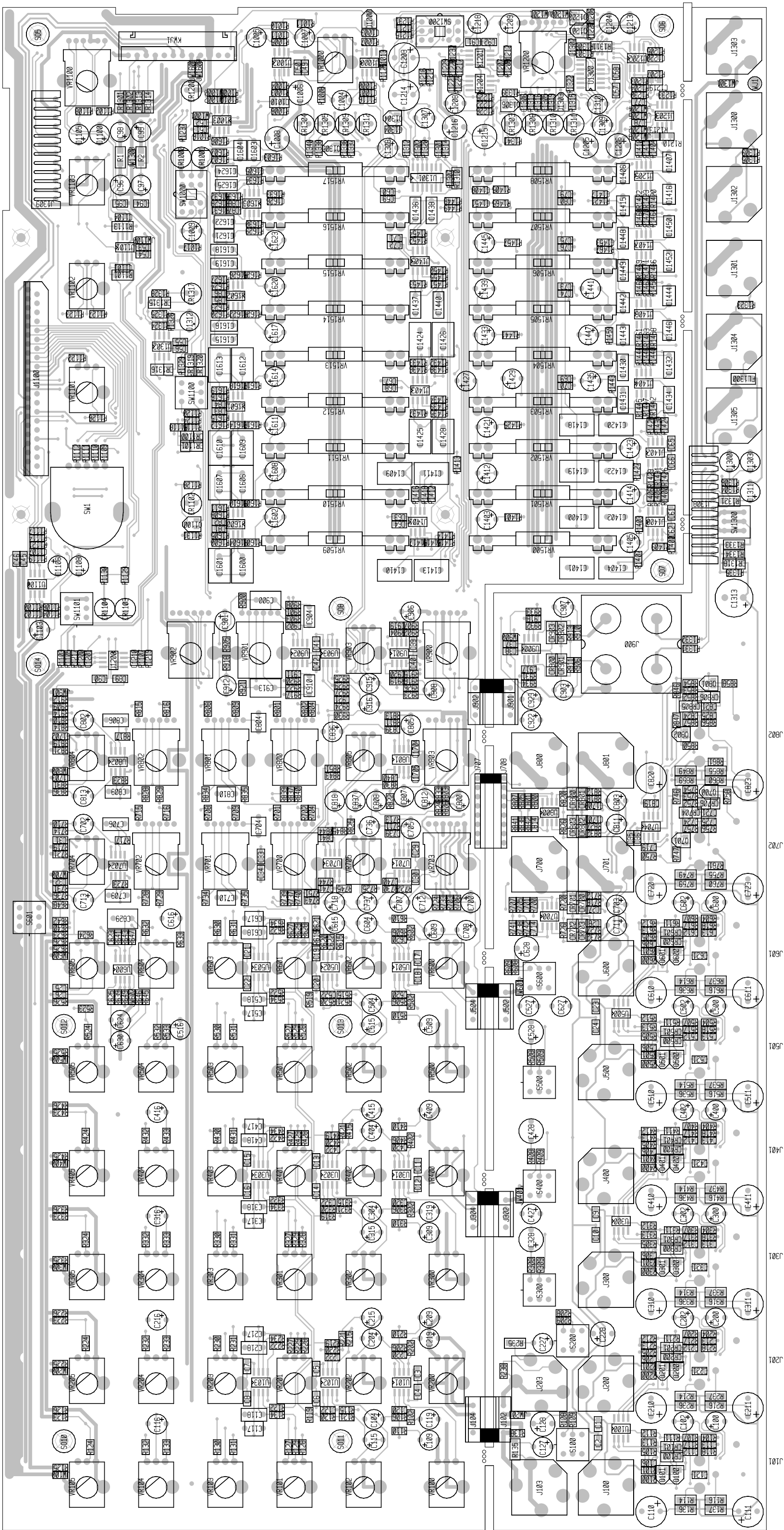
"COMPANY PROPRIETARY INFORMATION"

PEAVEY ELECTRONICS CORP.
711 A STREET
MERIDIAN, MS 39301

TITLE
XR684FK PREAMP

SIZE	CODE	NUMBER	REV
B		99573150	
DATE	15-JAN-2002	SHEET	3 OF 17





XR684 PREAMP - PRIMARY

1015

J201

TØER

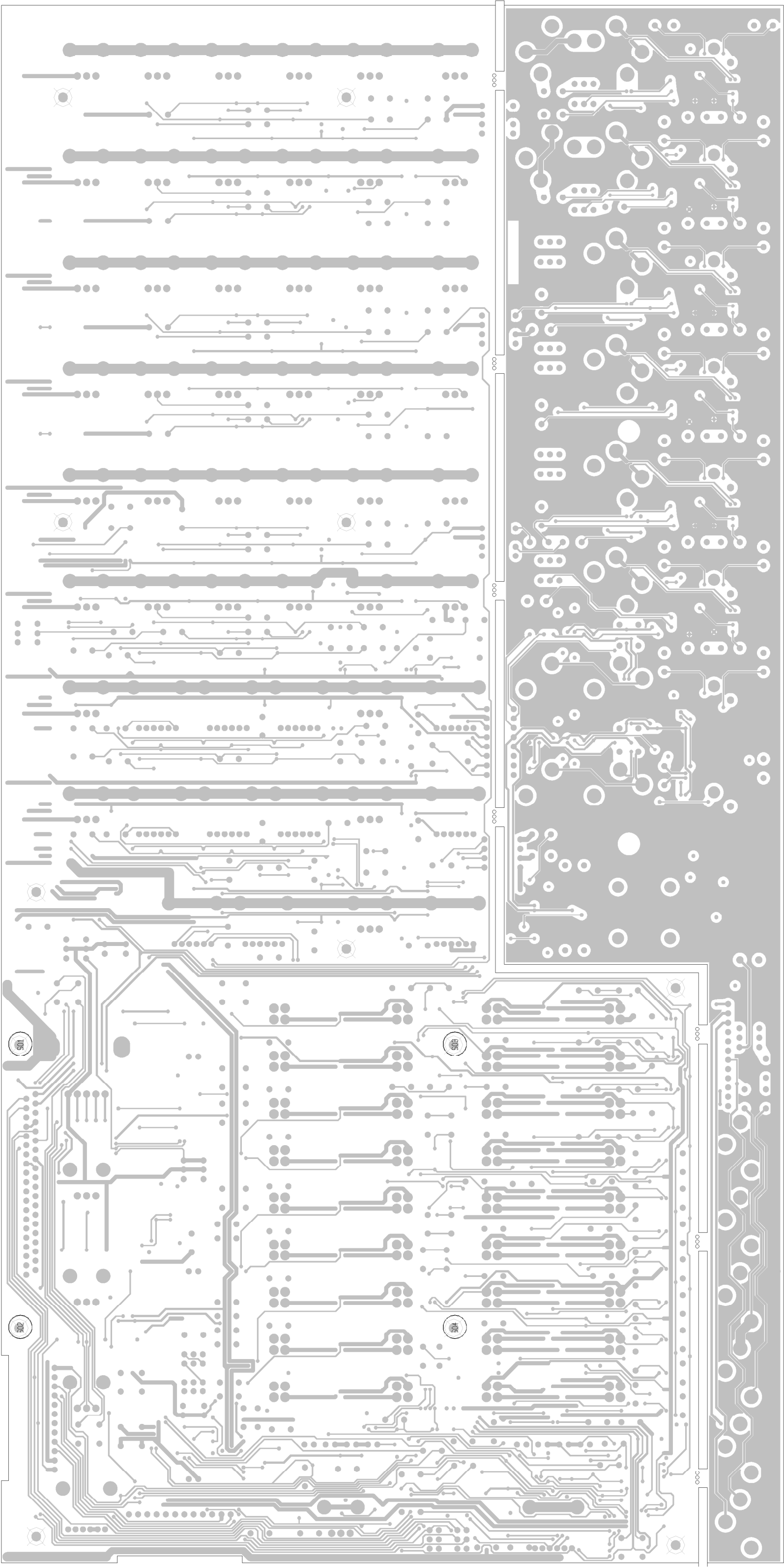
J401

1051

109r

2075

208



XR684F PREAMP - SECONDARY

BILL OF MATERIALS REPORT

BOARD NAME: 684FKPRE REPORT DATE: 11MAR02

ASSEMBLY LEVEL NUMBER: 99573150

PROJECT NUMBER: P0100123

CBDS

PART PART DESCRIPTION AND

** QTY. NAME VALUE NUMBER DEVICE DESIGNATIONS *****

1 72100740 72100740 72100740 PCB

12 .0015M .0015M 70330120 .0015M 5% 50vdc my T&A

C1406, C1407, C1415, C1416, C1442,
C1443, C1444, C1446, C1603, C1604,
C1621, C1622

8 .0018M .0018M 70330127 .0018M 5% 50vdc my T&A

C904, C910, C1448, C1449, C1450, C1452,
C1624, C1625

16 .001H .001 70300091 .001MF--NPO--50V--5%--805--SMT

C112, C113, C212, C213, C312, C313,
C412, C413, C512, C513, C612, C613,
C724, C725, C824, C825

10 .0068M .0068M 70330117 .0068mf---5%---50vdc---my---t&a

C117, C217, C317, C417, C517, C617,
C704, C710, C804, C810

12 .01M .01M 70330155 .01MF-5%-50VDC-MY-T&A

C1430, C1431, C1432, C1434, C1436,
C1437, C1438, C1440, C1615, C1616,
C1618, C1619

2 .068M .068M 70330124 .068M 5% 50vdc my T&A

C900, C913

24 .1M .1M 70330129 .1M 5% 50vdc my T&A

C1400, C1401, C1402, C1404, C1409,
C1410, C1411, C1413, C1418, C1419,
C1420, C1422, C1424, C1425, C1426,
C1428, C1600, C1601, C1606, C1607,
C1609, C1610, C1612, C1613

6 .1UF5H .1UF5 70300121 .1UF--50V--5%--X7R--0805--SMT

C1408, C1417, C1451, C1453, C1605, C1626

101 .1UFH .1UF 70300085 .1MF--Z5U--50V--20%--SMT--805

C1, C2, C3, C4, C5, C6, C7, C8, C9, C10,
C11, C12, C13, C14, C15, C16, C17, C18,
C19, C20, C21, C22, C23, C24, C25, C26,
C27, C28, C29, C30, C31, C32, C33, C34,
C35, C36, C37, C38, C39, C40, C41, C42,
C45, C46, C49, C50, C51, C52, C53, C54,
C55, C56, C57, C58, C59, C60, C61, C62,
C63, C64, C65, C66, C67, C68, C69, C70,
C71, C72, C73, C74, C75, C76, C77, C78,

C79, C80, C81, C82, C83, C84, C85, C86,
C87, C88, C89, C90, C91, C92, C94, C95,
C1301, C1302, C1304, C1305, C1306,
C1700, C1701, C1702, C1703, C1704, C1705

1 .22M .22M 70330128 .22M 5% 50vdc my T&A
C629

4 1.00KH 1.00K 70200188 1.00K OHM 1/10W 1% 805 SMT
R1214, R1216, R1304, R1306

17 1.10KH 1.10K 70200175 1.1K--1/10W--1%--SMT--805
R117, R118, R217, R218, R317, R318,
R417, R418, R517, R518, R617, R618,
R756, R757, R856, R857, R1325

3 1.37KH 1.37K 70200189 1.37K--1/10W--1%--SMT--0805
R1438, R1439, R1619

27 1.47KH 1.47K 70200201 1.47K OHM 1/10W 1% 805 SMT
R1401, R1403, R1405, R1413, R1415,
R1421, R1425, R1427, R1433, R1435,
R1441, R1443, R1449, R1451, R1457,
R1459, R1465, R1467, R1601, R1603,
R1609, R1613, R1617, R1621, R1625,
R1629, R1633

21 1.65KH 1.65K 70200191 1.65K--1/8W--1%--SMT--0805
R110, R121, R210, R221, R310, R321,
R410, R421, R510, R521, R610, R621,
R713, R722, R745, R813, R822, R845,
R907, R916, R929

81 10.0KH 10.0K 70200174 10K--1/10W--1%--SMT--805
R119, R123, R124, R219, R223, R224,
R319, R323, R324, R419, R423, R424,
R519, R523, R524, R619, R623, R624,
R639, R640, R641, R642, R643, R710,
R736, R743, R810, R836, R843, R906,
R909, R910, R911, R913, R914, R924,
R931, R932, R933, R934, R1000, R1009,
R1012, R1100, R1103, R1107, R1109,
R1110, R1111, R1112, R1115, R1116,
R1120, R1121, R1124, R1131, R1200,
R1210, R1213, R1219, R1230, R1233,
R1319, R1331, R1332, R1335, R1404,
R1408, R1409, R1420, R1424, R1426,
R1436, R1437, R1462, R1463, R1602,
R1605, R1612, R1618, R1631

34 100.0H 100.0 70200181 100--1/10W--1%--0805--SMT
R122, R125, R126, R222, R225, R226,
R322, R325, R326, R422, R425, R426,
R522, R525, R526, R622, R625, R626,
R648, R649, R719, R721, R751, R819,
R821, R851, R912, R930, R1013, R1105,
R1106, R1125, R1314, R1315

35 100.KH 100.K 70200194 100K OHM 1/10W 1% 805 SMT

R109, R129, R134, R138, R209, R229,
R234, R238, R309, R329, R334, R409,
R429, R434, R509, R529, R534, R609,
R629, R634, R646, R647, R704, R717,
R723, R737, R804, R817, R823, R837,
R905, R918, R1010, R1011, R1017

16 100PFH 100PF 70300088 100PF--NPO--50V--5%--SMT--805

C121, C221, C321, C421, C521, C621,
C721, C821, C917, C918, C1001, C1003,
C1201, C1210, C1219, C1221

1 100PFS 100PF 70300044 100PF COG 50V 5% SMT 1206

C1010

3 100S 100 70200060 100---1/8w--1%---smt

R135, R235, R1321

2 10S 10 70200011 10----1/8w--5%---smt

R1, R2

3 11.8KH 11.8K 70200193 11.8K--1/10W--1%--SMT--0805

R1448, R1450, R1624

32 13.7KP1S 13.7KP1 70200106 13.7K 1/8W--1%---SMT 1206

R114, R116, R136, R137, R214, R216,
R236, R237, R314, R316, R336, R337,
R414, R416, R436, R437, R514, R516,
R536, R537, R614, R616, R636, R637,
R749, R755, R759, R760, R849, R855,
R859, R860

4 15.0KH 15.0K 70200254 15.0K--1/10W--1%--SMT--0805

R1007, R1464, R1466, R1632

9 15MSOW 70901837 70901837 SPACER, 15mm-r(#4) .187 swage alum.

SO5, SO6, SO7, SO8, SO10, SO11, SO12,
SO13, SO14

15 18.2KH 18.2K 70200266 18.2K OHM--1/10W--1%--SMT--0805

R707, R712, R714, R731, R732, R738,
R807, R812, R814, R831, R832, R838,
R902, R915, R925

39 1N4148S 4148 70418026 1N4148 (LL34) DIODE SMT

CR100, CR101, CR200, CR201, CR300,
CR301, CR400, CR401, CR500, CR501,
CR600, CR601, CR700, CR701, CR702,
CR703, CR704, CR706, CR800, CR801,
CR802, CR803, CR805, CR806, CR900,
CR901, CR902, CR903, CR1100, CR1101,
CR1301, CR1302, CR1313, CR1314, CR1315,
CR1316, CR1318, CR1319, CR1320

1 1R50 1R50 70320261 1MF 20% 50 VDC EL T&A

C1312

49	2.21KH	2.21K	70200267	2.21K--1/10W--1%--SMT--0805	R100, R101, R130, R131, R200, R201, R230, R231, R300, R301, R330, R331, R400, R401, R430, R431, R500, R501, R530, R531, R600, R601, R630, R631, R706, R708, R709, R724, R734, R735, R746, R747, R761, R806, R808, R809, R824, R834, R835, R846, R847, R861, R923, R926, R1016, R1237, R1307, R1308, R1328
3	2.2R50	2.2R50	70320180	2.2MF-----20%----50VDC---EL--T&A	C630, C1308, C1309
3	2.49KH	2.49K	70200203	2.49K OHM 1/10W 1% 805 SMT	R1430, R1431, R1615
3	2.80KH	2.80K	70200192	2.80K--1/10W--1%--SMT--0805	R1411, R1423, R1607
9	20.0KH	20.0K	70200167	20K--1/10W--1%--SMT--805	R1410, R1412, R1414, R1422, R1428, R1429, R1606, R1608, R1614
8	2068H	2068	70418150	NJM2068 LOW NOISE DUAL OP AMP-SMT	U100, U300, U500, U704, U1100, U1200, U1202, U1204
2	210KH	210K	70200211	210K--1/8W--1%--SMT--0805	R1326, R1329
2	22.1KH	22.1K	70200256	22.1K--1/10W--1%--SMT--0805	R1302, R1303
2	220R16	220R16	70320293	220UF/16V, RAD, T&A	C1203, C1214
1	220R50	220R50	70320187	220MF-----20%----50VDC---EL--T&A	C1313
2	220S	220	70200016	220---1/8w--5%---smt	R1333, R1334
9	221H	221	70200183	221--1/10W--1%--SMT--0805	R108, R208, R308, R408, R508, R608, R752, R852, R1118
67	22KH	22K	70200169	22K--1/10W--5%--SMT--805	R102, R106, R115, R120, R202, R206, R215, R220, R302, R306, R315, R320, R402, R406, R415, R420, R502, R506, R515, R520, R602, R606, R615, R620, R700, R703, R705, R711, R718, R720, R725, R726, R727, R730, R733, R741, R742, R744, R800, R803, R805, R811, R818, R820, R825, R826, R827, R830,

R833, R841, R842, R844, R904, R919,
R927, R1102, R1108, R1114, R1117, R1206,
R1222, R1440, R1442, R1452, R1453,
R1620, R1626

123 22R50 22R50 70320181 22MF-----20%----50VDC---EL--T&A

C96, C97, C98, C99, C100, C102, C104,
C109, C115, C116, C119, C127, C200,
C202, C204, C209, C215, C216, C219,
C227, C300, C302, C304, C309, C315,
C316, C319, C400, C402, C404, C409,
C415, C416, C427, C500, C502, C504,
C509, C515, C516, C527, C600, C602,
C604, C609, C615, C616, C624, C627,
C700, C702, C703, C705, C707, C708,
C711, C712, C713, C718, C736, C737,
C800, C802, C803, C805, C807, C808,
C811, C812, C813, C818, C836, C837,
C901, C903, C906, C907, C908, C912,
C915, C916, C922, C923, C1004, C1005,
C1007, C1009, C1100, C1103, C1105,
C1106, C1108, C1204, C1208, C1209,
C1213, C1218, C1300, C1303, C1307,
C1310, C1311, C1403, C1405, C1412,
C1414, C1421, C1423, C1427, C1429,
C1433, C1435, C1439, C1441, C1445,
C1447, C1602, C1608, C1611, C1614,
C1617, C1620, C1623

1 2412S 2412 70418034 2SC2412 NPN (SOT-23) XSISTOR SMT

Q1100

4 2N6534S 6534 70418033 2N6533/34 PNP (SOT-23) XSISTOR SMT

Q1303, Q1304, Q1305, Q1306

16 2SD1484K 2SD1484K 70411484 2SD1484K NPN SOT23 SMT

Q100, Q101, Q200, Q201, Q300, Q301,
Q400, Q401, Q500, Q501, Q600, Q601,
Q700, Q701, Q801, Q802

25 3.32KH 3.32K 70200202 3.32K OHM 1/10W 1% 805 SMT

R112, R113, R212, R213, R312, R313,
R412, R413, R512, R513, R612, R613,
R645, R753, R754, R853, R854, R1126,
R1127, R1316, R1340, R1341, R1454,
R1455, R1627

6 31.6KH 31.6K 70200257 31.6K--1/10W--1%--SMT--0805

R1119, R1209, R1228, R1468, R1469, R1634

2 339H 339H 70418110 LM339D QUAD COMP IC - SMT SO14

U1300, U1301

4 375SOWST 70901890 70901890 .375 X .187 SUPER-TORQUE THREADED SWAGE SPACER

SO1, SO2, SO3, SO4

21 39.2KH 39.2K 70200259 39.2K--1/10W--1%--SMT--0805

R104, R107, R204, R207, R304, R307,
R404, R407, R504, R507, R604, R607,

			R1400, R1402, R1416, R1417, R1456, R1458, R1600, R1610, R1628
2	392H 392	70200184	392--1/10W--1%--SMT--0805 R1129, R1130
43	39PFH 39PF	70300087	39PF--NPO--50V--5%--SMT--805 C106, C120, C122, C206, C220, C222, C306, C320, C322, C406, C420, C422, C506, C520, C522, C606, C620, C622, C623, C625, C701, C714, C719, C739, C740, C741, C801, C814, C819, C839, C840, C841, C902, C911, C919, C920, C921, C1101, C1102, C1104, C1107, C1207, C1217
18	4.75KH 4.75K	70200251	4.75K--1/10W--1%--SMT--0805 R1003, R1004, R1005, R1006, R1008, R1122, R1123, R1203, R1204, R1205, R1207, R1224, R1225, R1226, R1229, R1432, R1434, R1616
16	4.99KH 4.99K	70200173	4.99K--1/10W--1%--SMT--805 R105, R111, R205, R211, R305, R311, R405, R411, R505, R511, R605, R611, R750, R758, R850, R858
41	4560H 4560	70418053	4560 DL OP AMP SOIC-8 U101, U102, U103, U301, U302, U303, U501, U502, U503, U600, U700, U701, U702, U703, U800, U801, U802, U900, U901, U902, U903, U1000, U1002, U1003, U1101, U1201, U1203, U1205, U1302, U1400, U1401, U1402, U1403, U1404, U1405, U1406, U1407, U1600, U1601, U1602, U1603
14	47.5KH 47.5K	70200205	47.5K OHM 1/10W 1% 805 SMT R1104, R1211, R1215, R1231, R1305, R1309, R1320, R1322, R1323, R1337, R1339, R1444, R1445, R1622
3	470PFH 470PF	70300090	470PF--NPO--50V--5%--SMT--805 C1011, C1220, C1222
12	470R6.3 470R6.3	70320183	470MF-----20%----6.3VDC--EL--T&A C128, C228, C328, C428, C528, C628, C1006, C1008, C1205, C1206, C1215, C1216
16	47V50 47V50	70320182	47MF-----20%----50VDC---LL--T&A C110, C111, C210, C211, C310, C311, C410, C411, C510, C511, C610, C611, C720, C723, C820, C823
6	5.11KH 5.11K	70200276	5.11K--1/10--1%--0805--SMT R1418, R1419, R1470, R1471, R1611, R1635
1	51.1H 51.1	70200179	51.1 OHM 1/10W 1% 805 SMT

R1217

2 590H 590 70200185 590--1/10W--1%--SMT--0805

R1312, R1313

53 6.8KH 6.8K 70200166 6.8K--1/10W--5%--SMT--805

R127, R128, R132, R133, R227, R228,
R232, R233, R327, R328, R332, R333,
R427, R428, R432, R433, R527, R528,
R532, R533, R627, R628, R632, R633,
R701, R702, R715, R716, R728, R729,
R739, R740, R801, R802, R815, R816,
R828, R829, R839, R840, R900, R901,
R908, R917, R921, R922, R1128, R1324,

R1336, R1338, R1446, R1447, R1623

10 680PFM 680PFM 70330135 680pf 5% 50vdc my T&A

C118, C218, C318, C418, C518, C618,
C706, C709, C806, C809

2 680S 680 70200085 680---1/8w--1%---smt

R1310, R1311

2 68KS 68K 70200033 68K--1/8W--5%----SMT

R1101, R1113

4 8.2KH 8.2K 70200176 8.2K--1/10W--5%--SMT--805

R903, R920, R1212, R1232

6 80.6KH 80.6K 70200278 80.6K--1/10--1%--0805--SMT

R1406, R1407, R1460, R1461, R1604, R1630

2 8PRCJ2 70600028 70600028 8C PRE-TIN .100 CTR 2.5" JMP (SPLIT VERSION)

J707, J708

1 BISW2316 BISW2316 71322316 BINARY ROTARY SWITCH

SW1

8 CAB0520 CAB0520 70600520 4CRC-.098 CNT2.25" SNAPIN

J102, J104, J302, J304, J502, J504,
J901, J902

1 EMI102S EMI102S 70418212 PANASONIC EXCCET(SMT) 102U 1000UF EMI NOTCH FILT

FL1300

8 FVXLR325 71466325 71466325 Connector, Female XLR

J101, J201, J301, J401, J501, J601,
J702, J802

1 HDR0228 70650228 70650228 1.25MM FLAT-FLEX 40-POSITION CONNECTOR

J1100

10 HIDMNI 71466214 71466214 2 TIP HID JACK NINS W/SPD

J700, J701, J800, J801, J1300, J1301,
J1302, J1303, J1304, J1305

8 HIDSNI 71466217 71466217 STEREO HID JACK NINS W/SPD
J100, J103, J200, J203, J300, J400,
J500, J600

3 J111S J111 70418138 J111 N-CH JFET SOT23-SMT
Q1000, Q1200, Q1201

28 JMPH JMP 70200164 SURFACE MOUNT JUMPER 805
JW100, JW200, JW201, JW300, JW400,
JW401, JW500, JW600, JW601, JW602,
JW700, JW800, JW900, JW901, JW1000,
JW1001, JW1002, JW1100, JW1200, JW1201,
JW1202, JW1203, JW1204, JW1205, JW1300,
JW1301, JW1600, JW1601

1 KRTCON12 73711820 73711820 12-SHRD-RA-HDR-2.5MM KWANASIA
KWJ1

1 LEDB6 LEDB6 70450070 LED, T-1, BLUE, W/.500" SPCR - T&A
CR1102

6 LEDG6 LEDG6 70450051 LED, T-1, GRN, W/.500" SPCR - T&A
CR1000, CR1200, CR1309, CR1310, CR1311,
CR1312

3 LEDR6 LEDR6 70450050 LED, T-1, RED, W/.500" SPCR - T&A
CR1103, CR1303, CR1304

5 LEDY6 LEDY6 70450052 LED, T-1, YEL, W/.500" SPCR - T&A
CR1001, CR1104, CR1305, CR1306, CR1317

1 POT0257 71190257 71190257 10KB - STD - 9MM - W/DTT
VR1000

2 POT0258 71190258 71190258 10K - STD - 9MM
VR1101, VR1102

42 POT0259 71190259 71190259 50KB - STD - 9MM - W/DTT
VR100, VR101, VR102, VR103, VR104,
VR105, VR200, VR201, VR202, VR203,
VR204, VR205, VR300, VR301, VR302,
VR303, VR304, VR305, VR400, VR401,
VR402, VR403, VR404, VR405, VR500,
VR501, VR502, VR503, VR504, VR505,
VR600, VR601, VR602, VR603, VR604,
VR605, VR704, VR705, VR804, VR805,
VR903, VR1103

13 POT0716 POT0716 71190716 50KBX2 DUAL 12MM ROT POT W/DTT
VR700, VR701, VR702, VR703, VR800,
VR801, VR802, VR803, VR900, VR901,
VR902, VR1100, VR1200

1 RCA4N RCA4N 71466272 QUAD NICKEL RCA PHONO 24MM
J900

2 RT12CONN 73717193 73717193 12--RA--WIRE TO PCB HDR

J1308, J1309

18 SPOT0459 71190459 71190459 DUAL 50K 20MM W TAPER W/DTT AND TAP

VR1500, VR1501, VR1502, VR1503, VR1504,
VR1505, VR1506, VR1507, VR1508, VR1509,
VR1510, VR1511, VR1512, VR1513, VR1514,
VR1515, VR1516, VR1517

8 SW2356 71322356 71322356 DPDT PUSH BUTTON SW 2.8MM SQ SHAFT

S100, S200, S300, S400, S500, S600,
S601, SW1300

2 SW2360 SW2360 71322360 4PDT PUCH BUTTON SW, 2.8MM SHAFT

SW1000, SW1200

2 SW2361 71322361 71322361 DPDT MOM PUSH BUTTON SW 2.8MM SQ SHAFT

SW1100, SW1101

1 WJX WJX XXXXXXXX XXXXXXXX

WJ1

* END OF BILL OF MATERIALS REPORT *
