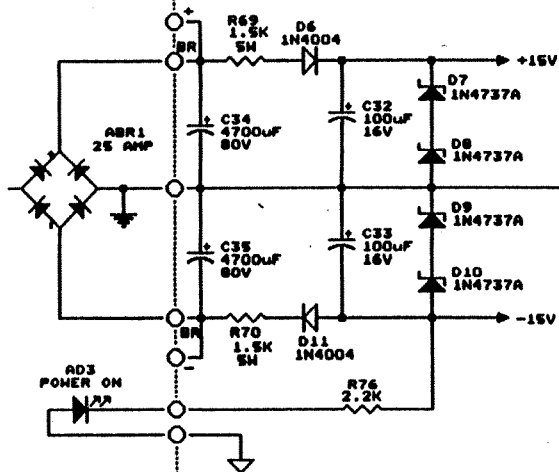


Part of
Chassis Assembly

PASSIVE/ACTIVE
AJ3

ACTIVE INPUT
AJ4



+59V

R10
4.7K

C5
47µF
63V

C7
0.022µF

C6
39pF

R8
92K

R12
3.9K

R16
1M

R9
2.2K

R17
1M

R15
150K

R19
470K

R25
100K

R26
100K

R27
1.5K

R28
2.2K

R29
10K

R30
10K

R31
1K

R32
10K

R33
33K

R34
56K

R35
10K

R36
10K

R37
10K

R38
10K

R39
10K

R40
10K

R41
10K

R42
10K

R43
10K

R44
10K

R45
10K

R46
10K

R47
10K

R48
10K

R49
10K

R50
10K

R51
10K

R52
10K

R53
10K

R54
10K

R55
10K

R56
10K

R57
10K

R58
10K

R59
10K

R60
10K

R61
10K

R62
10K

R63
10K

R64
10K

R65
10K

R66
10K

R67
10K

R68
10K

R69
10K

R70
10K

R71
10K

R72
10K

R73
10K

R74
10K

R75
10K

R76
10K

R77
10K

R78
10K

R79
10K

R80
10K

R81
10K

R82
10K

R83
10K

R84
10K

R85
10K

R86
10K

R87
10K

R88
10K

R89
10K

R90
10K

R91
10K

R92
10K

R93
10K

R94
10K

R95
10K

R96
10K

R97
10K

R98
10K

R99
10K

R100
10K

R101
10K

R102
10K

R103
10K

R104
10K

R105
10K

R106
10K

R107
10K

R108
10K

R109
10K

R110
10K

R111
10K

R112
10K

R113
10K

R114
10K

R115
10K

R116
10K

R117
10K

R118
10K

R119
10K

R120
10K

R121
10K

R122
10K

R123
10K

R124
10K

R125
10K

R126
10K

R127
10K

R128
10K

R129
10K

R130
10K

R131
10K

R132
10K

R133
10K

R134
10K

R135
10K

R136
10K

R137
10K

R138
10K

R139
10K

R140
10K

R141
10K

R142
10K

R143
10K

R144
10K

R145
10K

R146
10K

R147
10K

R148
10K

R149
10K

R150
10K

R151
10K

R152
10K

R153
10K

R154
10K

R155
10K

R156
10K

R157
10K

R158
10K

R159
10K

R160
10K

R161
10K

R162
10K

R163
10K

R164
10K

R165
10K

R166
10K

R167
10K

R168
10K

R169
10K

R170
10K

R171
10K

R172
10K

R173
10K

R174
10K

R175
10K

R176
10K

R177
10K

R178
10K

R179
10K

R180
10K

R181
10K

R182
10K

R183
10K

R184
10K

R185
10K

R186
10K

R187
10K

R188
10K

R189
10K

R190
10K

R191
10K

R192
10K

R193
10K

R194
10K

R195
10K

R196
10K

R197
10K

R198
10K

R199
10K

R200
10K

R201
10K

R202
10K

R203
10K

R204
10K

R205
10K

R206
10K

R207
10K

R208
10K

R209
10K

R210
10K

Part of
Chassis Assembly

TUNE

XLR

AJ1
BALANCED
D.I.

AJ2
TO TUNER

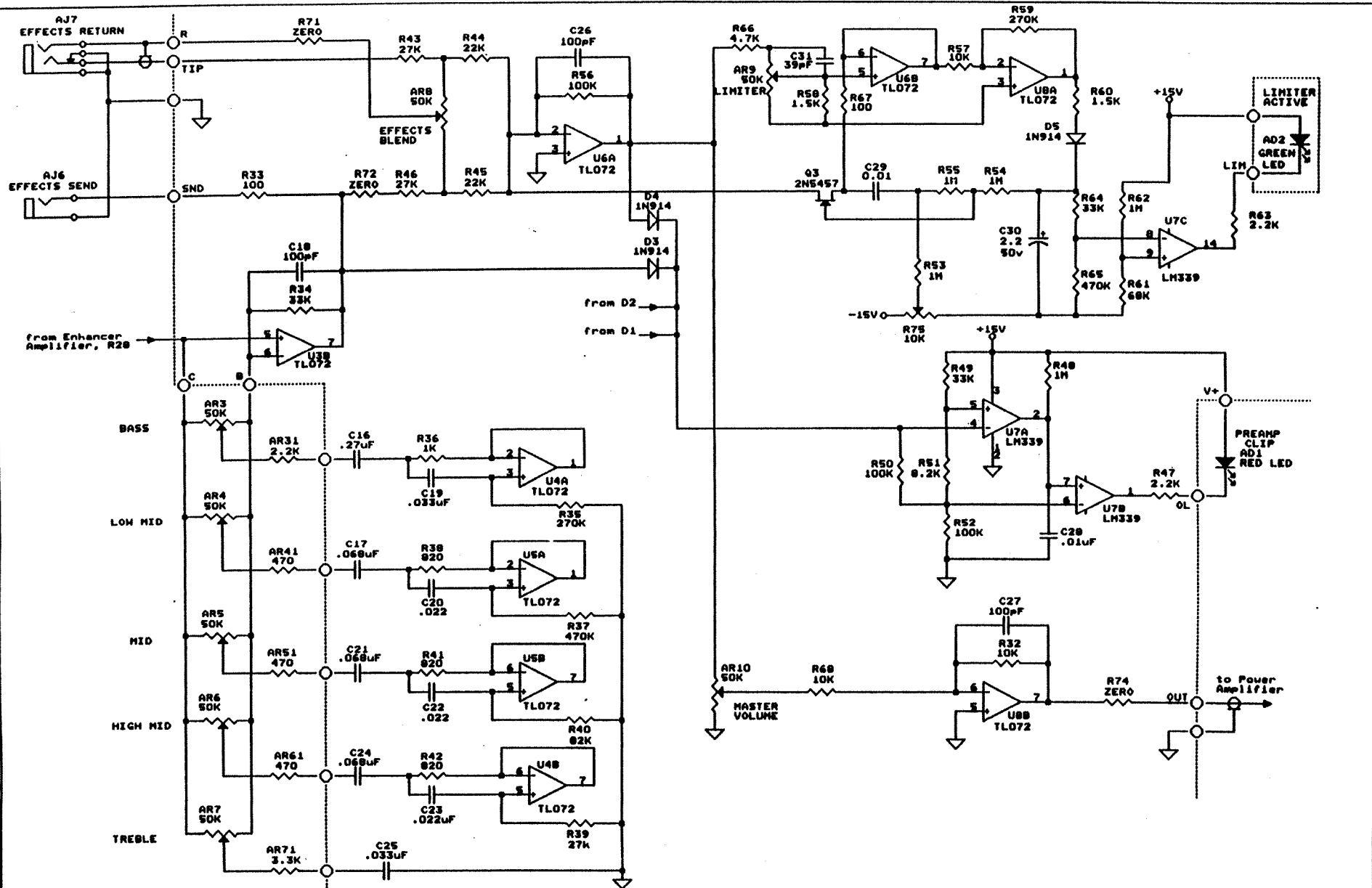
TO U7-4
OVERLOAD

TO U3-S

- Reference designators with an A prefix are part of the chassis sub-assembly.
- All TL072s have +15 Volts to pin 8, and -15 Volts to pin 4.
- All resistors are Ohms, 1/4 Watt

NOTES (Unless otherwise indicated):

SHR SOUND CORPORATION	
9130 GLENOAKS BLVD.	
SUN VALLEY, CA 91352	
PHONE: (818) 253-4797 FAX: (818) 253-4799	
http://www.shrsound.com	
Title	
MM4004 PRERAMP AND AURAL ENHANCER	
Size	Document Number
8	700049-1
Date	June 2, 1999
Sheet	1 of 2



3. Reference designators with an A prefix are part of the chassis subassembly.
 2. All TL072s have +15 Volts to pin 8, and -15 Volts to pin 4.
 1. All resistors are Ohms, 1/4 Watt, and capacitors are in microFarads.
 NOTES (Unless otherwise specified):

SHR SOUND CORPORATION		
9130 GLENDALE BLVD.		
PHONE: (818) 253-4797 FAX: (818) 253-4799		
http://www.shrsound.com		
Title		
MM4004 TONES, LIMITER, AND EFFECTS		
Size Document Number		
B 700049-2		
Date		
June 14, 1999 sheet 2 of 2		