

8
COPYRIGHT 1993 PEAVEY ELECTRONICS CORP. PRINTED IN U.S.A.

7
2

4

5

6

7

8

9

10

11

12

13

14

15

16

17

18

19

20

21

22

23

24

25

26

27

28

29

30

31

32

33

34

35

36

37

38

39

40

41

42

43

44

45

46

47

48

49

50

51

52

53

54

55

56

57

58

59

60

61

62

63

64

65

66

67

68

69

70

71

72

73

74

75

76

77

78

79

80

81

82

83

84

85

86

87

88

89

90

91

92

93

94

95

96

97

98

99

100

101

102

103

104

105

106

107

108

109

110

111

112

113

114

115

116

117

118

119

120

121

122

123

124

125

126

127

128

129

130

131

132

133

134

135

136

137

138

139

140

141

142

143

144

145

146

147

148

149

150

151

152

153

154

155

156

157

158

159

160

161

162

163

164

165

166

167

168

169

170

171

172

173

174

175

176

177

178

179

180

181

182

183

184

185

186

187

188

189

190

191

192

193

194

195

196

197

198

199

200

201

202

203

204

205

206

207

208

209

210

211

212

213

214

215

216

217

218

219

220

221

222

223

224

225

226

227

228

229

230

231

232

233

234

235

236

237

238

239

240

241

242

243

244

245

246

247

248

249

250

251

252

253

254

255

256

257

258

259

260

261

262

263

264

265

266

267

268

269

270

271

272

273

274

275

276

277

278

279

280

281

282

283

284

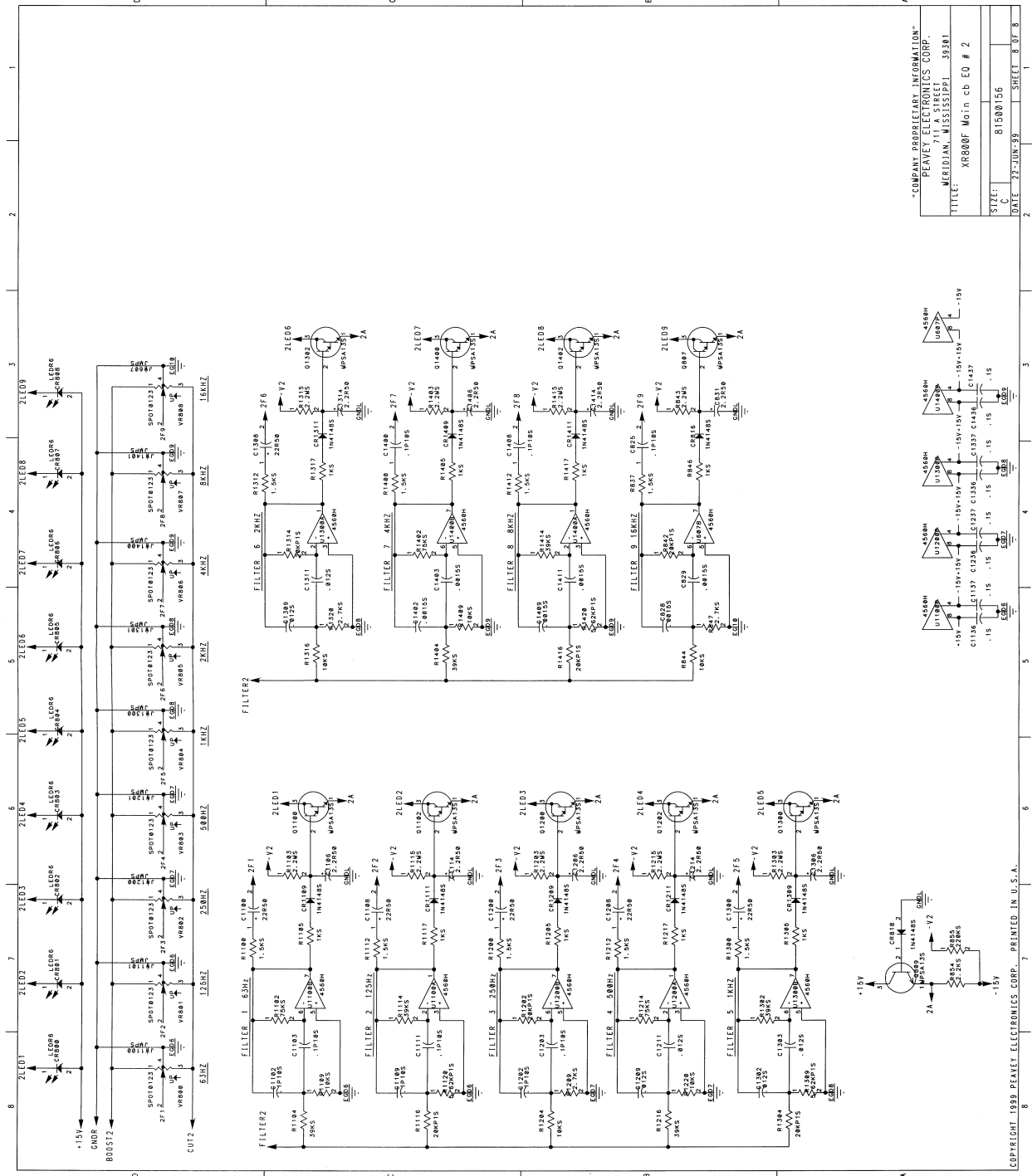
285

286

287

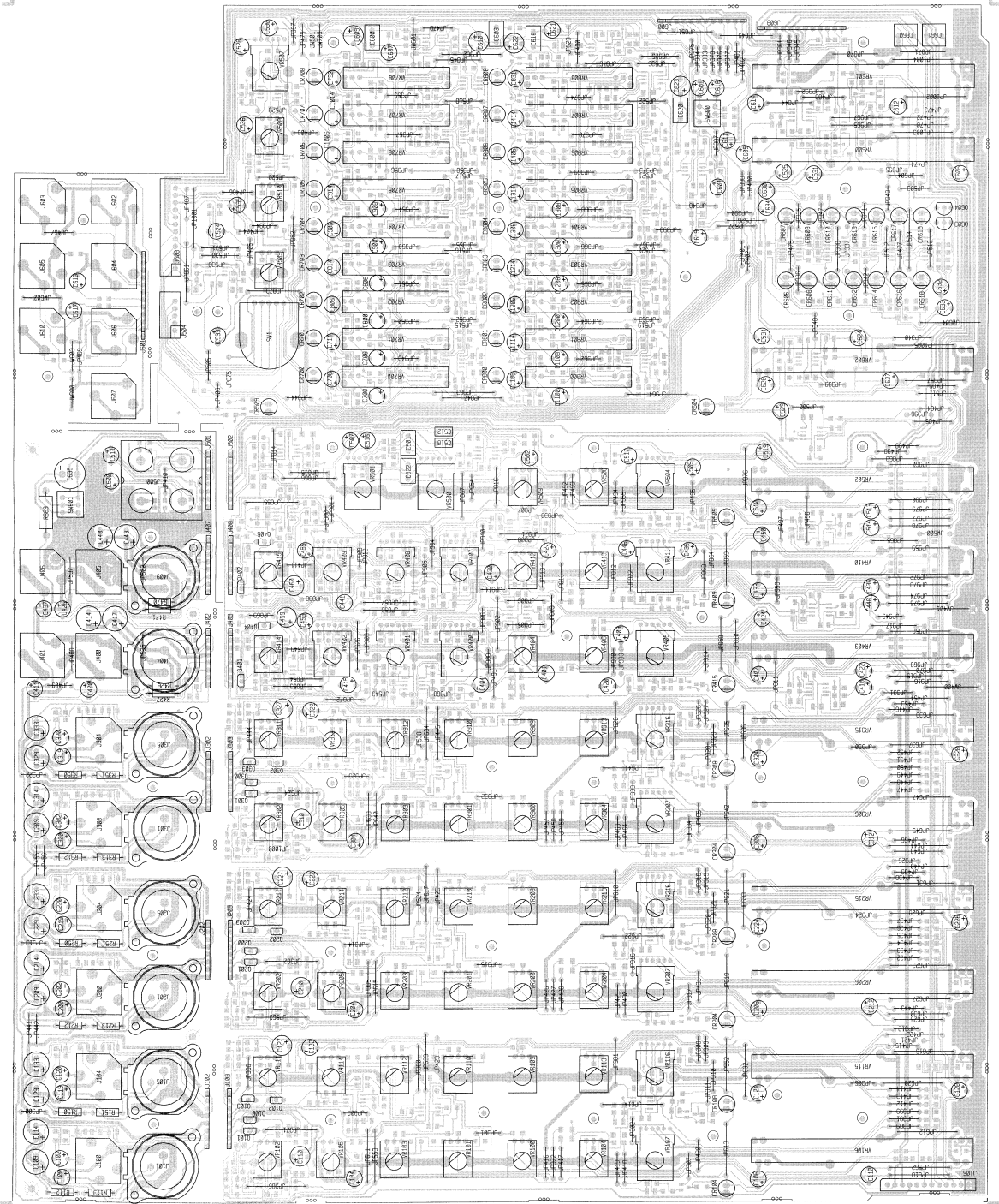
288

289



"COMPANY PROPRIETARY INFORMATION"
 PEAVEY ELECTRONICS CORP.
 10000 WILSON AVENUE
 MERRIDIAN, MISSISSIPPI 39301
 TITLE: XR800F Main cb EQ # 2
 SIZE: 81500156
 DATE: 77-JUN-89 SHEET: 8 OF 8

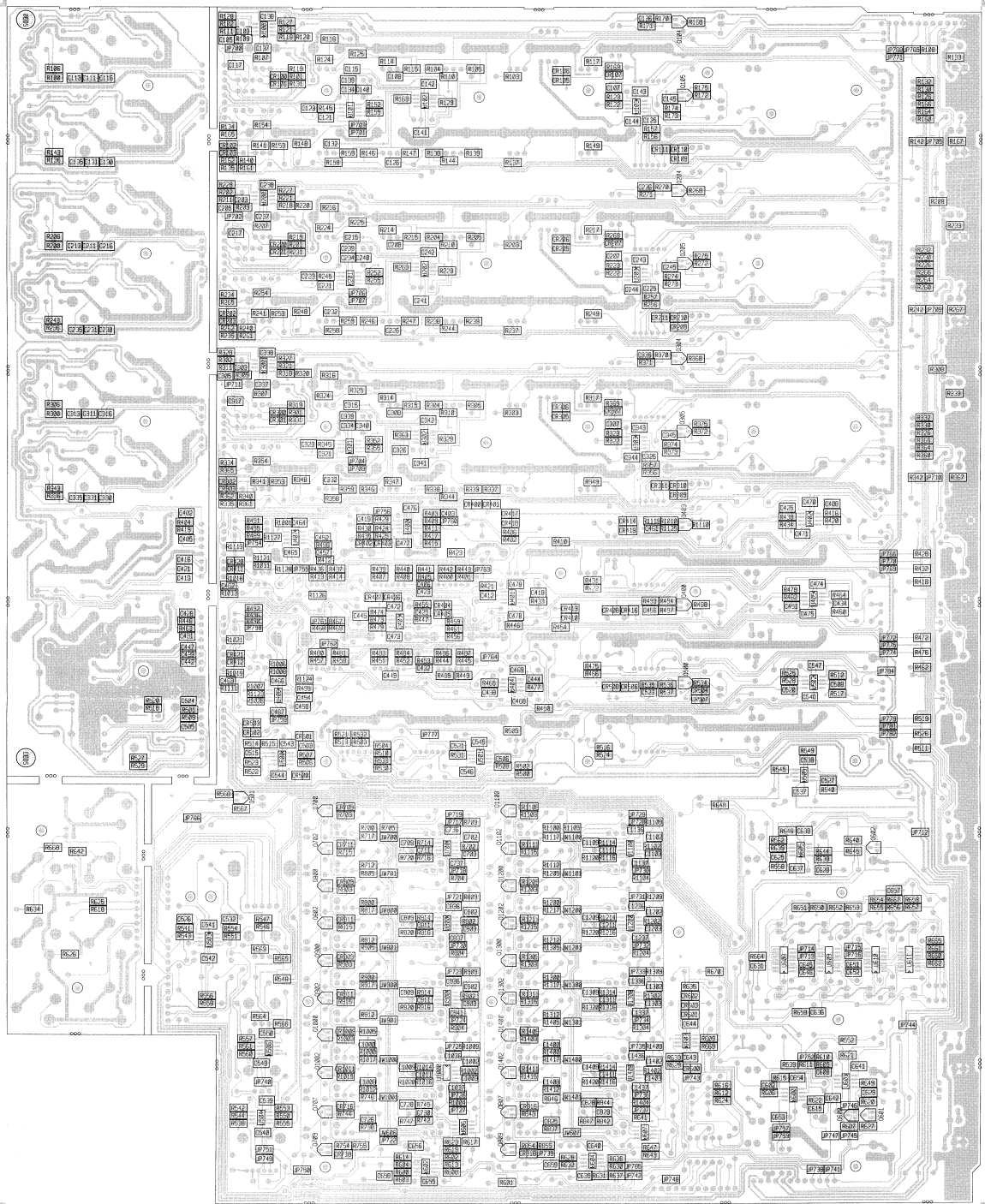
COMPONENT SIDE XR800F Main



Do NOT place the following parts for:	P/N 99052980
	R520
	R527

XR800F Main

SOLDER SIDE



Do NOT place the following parts for:
P/N 99052980
R520
R527

BOARD NAME: XR800FMain
PART DESCRIPTION AND
QTY, NAME, VALUE, NUMBER, DEVICE DESIGNATIONS **

12	.00155	.0015	70300037	.0015MF X7R 50V 10% SMT 1206	C728, C730, C828, C829, C1002, C1003, C1009, C1011, C1402, C1403, C1409, C1411
2	.0018M	.0018M	70330127	.0018M 5% 50vdc my T&A	C512, C518
12	.0125	.012	70300074	.012UF--X7R--100V--5%--SMT1206	C809, C811, C902, C903, C909, C911, C1209, C1211, C1302, C1303, C1309, C1311
6	.068M	.068M	70330124	.068M 5% 50vdc my T&A	C501, C522, C600, C603, C616, C620
18	.1P105	.1p10	70300028	.1mfd x7r 50v 10% 1206	C702, C703, C709, C711, C726, C802, C803, C825, C1000, C1008, C1102, C1103, C1109, C1111, C1202, C1203, C1400, C1408
98	.1S	.1	70300035	.1MF Z5U 50V 20% SMT 1206	C136, C137, C138, C139, C140, C141, C143, C145, C146, C147, C148, C149, C238, C239, C240, C241, C242, C243, C244, C245, C336, C337, C338, C339, C340, C341, C342, C343, C344, C345, C456, C461, C464, C465, C466, C467, C468, C469, C470, C471, C472, C473, C474, C475, C476, C477, C478, C479, C480, C481, C482, C483, C484, C485, C486, C487, C488, C489, C500, C501, C636, C637, C638, C639, C640, C641, C642, C643, C644, C645, C646, C651, C652, C653, C654, C655, C656, C657, C736, C737, C836, C837, C936, C941, C1036, C1037, C1136, C1137, C1236, C1237, C1336, C1337, C1436, C1437
2	.82M	.82M	70330122	.82mf 5% 50vdc my T&A	C660, C661
16	1.1KP1S	1.1K	70200069	1.1K--1/8W--1%--SMT 1206	R101, R131, R134, R165, R201, R231, R234, R265, R301, R331, R334, R365, R1018, R1019, R1021, R1113
1	1.3KS	1.3K	70200062	1.3K--1/8W--5%--SM	R654
21	1.5KS	1.5K	70200020	1.5K--1/8W--5%--smt	R549, R565, R566, R700, R712, R738, R800, R812, R837, R900, R912, R1000, R1012, R1100, R1112, R1200, R1212, R1300, R1312, R1400, R1412
32	100KS	100K	70200034	100K--1/8W--5%--SM	R110, R116, R129, R144, R148, R163, R210, R216, R229, R244, R248, R263, R310, R316, R329, R344, R348, R363, R405, R412, R421, R423, R433, R441, R449, R456, R463, R467, R477, R485, R1124, R1126
18	100PFS	100PF	70300044	100PF COG 50V 5% SMT 1206	C103, C117, C121, C134, C203, C217, C221, C234, C303, C317, C321, C334, C452, C454, C462, C463, C602, C615
17	100S	100	70200013	100--1/8W--5%--smt	R428, R472, R519, R546, R547, R548, R130, R164, R230, R264, R330, R364, R428, R472, R519, R546, R547, R548,

1	100W1	100W1	70210003	100--1W--5%--MO--T&R	R615, R618, R625, R642, R668
32	10KP1S	10kp1	70200051	10K--1/8W--1%--SMT	R107, R118, R121, R127, R140, R152, R155, R161, R207, R218, R221, R227, R230, R231, R232, R233, R234, R235, R236, R237, R238, R239, R240, R241, R242, R243, R244, R245, R246, R247, R248, R249, R250, R251, R252, R253, R254, R255, R256, R257, R258, R259, R260, R261, R262, R263, R264, R265, R266, R267, R268, R269, R270, R271, R272, R273, R274, R275, R276, R277, R278, R279, R280, R281, R282, R283, R284, R285, R286, R287, R288, R289, R290, R291, R292, R293, R294, R295, R296, R297, R298, R299, R300, R301, R302, R303, R304, R305, R306, R307, R308, R309, R310, R311, R312, R313, R314, R315, R316, R317, R318, R319, R320, R321, R322, R323, R324, R325, R326, R327, R328, R329, R330, R331, R332, R333, R334, R335, R336, R337, R338, R339, R340, R341, R342, R343, R344, R345, R346, R347, R348, R349, R350, R351, R352, R353, R354, R355, R356, R357, R358, R359, R360, R361, R362, R363, R364, R365, R366, R367, R368, R369, R370, R371, R372, R373, R374, R375, R376, R377, R378, R379, R380, R381, R382, R383, R384, R385, R386, R387, R388, R389, R390, R391, R392, R393, R394, R395, R396, R397, R398, R399, R400, R401, R402, R403, R404, R405, R406, R407, R408, R409, R410, R411, R412, R413, R414, R415, R416, R417, R418, R419, R420, R421, R422, R423, R424, R425, R426, R427, R428, R429, R430, R431, R432, R433, R434, R435, R436, R437, R438, R439, R440, R441, R442, R443, R444, R445, R446, R447, R448, R449, R450, R451, R452, R453, R454, R455, R456, R457, R458, R459, R460, R461, R462, R463, R464, R465, R466, R467, R468, R469, R470, R471, R472, R473, R474, R475, R476, R477, R478, R479, R480, R481, R482, R483, R484, R485, R486, R487, R488, R489, R490, R491, R492, R493, R494, R495, R496, R497, R498, R499, R500, R501, R502, R503, R504, R505, R506, R507, R508, R509, R510, R511, R512, R513, R514, R515, R516, R517, R518, R519, R520, R521, R522, R523, R524, R525, R526, R527, R528, R529, R530, R531, R532, R533, R534, R535, R536, R537, R538, R539, R540, R541, R542, R543, R544, R545, R546, R547, R548, R549, R550, R551, R552, R553, R554, R555, R556, R557, R558, R559, R560, R561, R562, R563, R564, R565, R566, R567, R568, R569, R570, R571, R572, R573, R574, R575, R576, R577, R578, R579, R580, R581, R582, R583, R584, R585, R586, R587, R588, R589, R590, R591, R592, R593, R594, R595, R596, R597, R598, R599, R600, R601, R602, R603, R604, R605, R606, R607, R608, R609, R610, R611, R612, R613, R614, R615, R616, R617, R618, R619, R620, R621, R622, R623, R624, R625, R626, R627, R628, R629, R630, R631, R632, R633, R634, R635, R636, R637, R638, R639, R640, R641, R642, R643, R644, R645, R646, R647, R648, R649, R650, R651, R652, R653, R654, R655, R656, R657, R658, R659, R660, R661, R662, R663, R664, R665, R666, R667, R668, R669, R670, R671, R672, R673, R674, R675, R676, R677, R678, R679, R680, R681, R682, R683, R684, R685, R686, R687, R688, R689, R690, R691, R692, R693, R694, R695, R696, R697, R698, R699, R700, R701, R702, R703, R704, R705, R706, R707, R708, R709, R710, R711, R712, R713, R714, R715, R716, R717, R718, R719, R720, R721, R722, R723, R724, R725, R726, R727, R728, R729, R730, R731, R732, R733, R734, R735, R736, R737, R738, R739, R740, R741, R742, R743, R744, R745, R746, R747, R748, R749, R750, R751, R752, R753, R754, R755, R756, R757, R758, R759, R760, R761, R762, R763, R764, R765, R766, R767, R768, R769, R770, R771, R772, R773, R774, R775, R776, R777, R778, R779, R780, R781, R782, R783, R784, R785, R786, R787, R788, R789, R790, R791, R792, R793, R794, R795, R796, R797, R798, R799, R800, R801, R802, R803, R804, R805, R806, R807, R808, R809, R810, R811, R812, R813, R814, R815, R816, R817, R818, R819, R820, R821, R822, R823, R824, R825, R826, R827, R828, R829, R830, R831, R832, R833, R834, R835, R836, R837, R838, R839, R840, R841, R842, R843, R844, R845, R846, R847, R848, R849, R850, R851, R852, R853, R854, R855, R856, R857, R858, R859, R860, R861, R862, R863, R864, R865, R866, R867, R868, R869, R870, R871, R872, R873, R874, R875, R876, R877, R878, R879, R880, R881, R882, R883, R884, R885, R886, R887, R888, R889, R890, R891, R892, R893, R894, R895, R896, R897, R898, R899, R900, R901, R902, R903, R904, R905, R906, R907, R908, R909, R910, R911, R912, R913, R914, R915, R916, R917, R918, R919, R920, R921, R922, R923, R924, R925, R926, R927, R928, R929, R930, R931, R932, R933, R934, R935, R936, R937, R938, R939, R940, R941, R942, R943, R944, R945, R946, R947, R948, R949, R950, R951, R952, R953, R954, R955, R956, R957, R958, R959, R960, R961, R962, R963, R964, R965, R966, R967, R968, R969, R970, R971, R972, R973, R974, R975, R976, R977, R978, R979, R980, R981, R982, R983, R984, R985, R986, R987, R988, R989, R990, R991, R992, R993, R994, R995, R996, R997, R998, R999, R1000, R1001, R1002, R1003, R1004, R1005, R1006, R1007, R1008, R1009, R1010, R1011, R1012, R1013, R1014, R1015, R1016, R1017, R1018, R1019, R1020, R1021, R1022, R1023, R1024, R1025, R1026, R1027, R1028, R1029, R1030, R1031, R1032, R1033, R1034, R1035, R1036, R1037, R1038, R1039, R1040, R1041, R1042, R1043, R1044, R1045, R1046, R1047, R1048, R1049, R1050, R1051, R1052, R1053, R1054, R1055, R1056, R1057, R1058, R1059, R1060, R1061, R1062, R1063, R1064, R1065, R1066, R1067, R1068, R1069, R1070, R1071, R1072, R1073, R1074, R1075, R1076, R1077, R1078, R1079, R1080, R1081, R1082, R1083, R1084, R1085, R1086, R1087, R1088, R1089, R1090, R1091, R1092, R1093, R1094, R1095, R1096, R1097, R1098, R1099, R1100, R1101, R1102, R1103, R1104, R1105, R1106, R1107, R1108, R1109, R1110, R1111, R1112, R1113, R1114, R1115, R1116, R1117, R1118, R1119, R1120, R1121, R1122, R1123, R1124, R1125, R1126, R1127, R1128, R1129, R1130, R1131, R1132, R1133, R1134, R1135, R1136, R1137, R1138, R1139, R1140, R1141, R1142, R1143, R1144, R1145, R1146, R1147, R1148, R1149, R1150, R1151, R1152, R1153, R1154, R1155, R1156, R1157, R1158, R1159, R1160, R1161, R1162, R1163, R1164, R1165, R1166, R1167, R1168, R1169, R1170, R1171, R1172, R1173, R1174, R1175, R1176, R1177, R1178, R1179, R1180, R1181, R1182, R1183, R1184, R1185, R1186, R1187, R1188, R1189, R1190, R1191, R1192, R1193, R1194, R1195, R1196, R1197, R1198, R1199, R1200, R1201, R1202, R1203, R1204, R1205, R1206, R1207, R1208, R1209, R1210, R1211, R1212, R1213, R1214, R1215, R1216, R1217, R1218, R1219, R1220, R1221, R1222, R1223, R1224, R1225, R1226, R1227, R1228, R1229, R1230, R1231, R1232, R1233, R1234, R1235, R1236, R1237, R1238, R1239, R1240, R1241, R1242, R1243, R1244, R1245, R1246, R1247, R1248, R1249, R1250, R1251, R1252, R1253, R1254, R1255, R1256, R1257, R1258, R1259, R1260, R1261, R1262, R1263, R1264, R1265, R1266, R1267, R1268, R1269, R1270, R1271, R1272, R1273, R1274, R1275, R1276, R1277, R1278, R1279, R1280, R1281, R1282, R1283, R1284, R1285, R1286, R1287, R1288, R1289, R1290, R1291, R1292, R1293, R1294, R1295, R1296, R1297, R1298, R1299, R1300, R1301, R1302, R1303, R1304, R1305, R1306, R1307, R1308, R1309, R1310, R1311, R1312, R1313, R1314, R1315, R1316, R1317, R1318, R1319, R1320, R1321, R1322, R1323, R1324, R1325, R1326, R1327, R1328, R1329, R1330, R1331, R1332, R1333, R1334, R1335, R1336, R1337, R1338, R1339, R1340, R1341, R1342, R1343, R1344, R1345, R1346, R1347, R1348, R1349, R1350, R1351, R1352, R1353, R1354, R1355, R1356, R1357, R1358, R1359, R1360, R1361, R1362, R1363, R1364, R1365, R1366, R1367, R1368, R1369, R1370, R1371, R1372, R1373, R1374, R1375, R1376, R1377, R1378, R1379, R1380, R1381, R1382, R1383, R1384, R1385, R1386, R1387, R1388, R1389, R1390, R1391, R1392, R1393, R1394, R1395, R1396, R1397, R1398, R1399, R1400, R1401, R1402, R1403, R1404, R1405, R1406, R1407, R1408, R1409, R1410, R1411, R1412, R1413, R1414, R1415, R1416, R1417, R1418, R1419, R1420, R1421, R1422, R1423, R1424, R1425, R1426, R1427, R1428, R1429, R1430, R1431, R1432, R1433, R1434, R1435, R1436, R1437, R1438, R1439, R1440, R1441, R1442, R1443, R1444, R1445, R1446, R1447, R1448, R1449, R1450, R1451, R1452, R1453, R1454, R1455, R1456, R1457, R1458, R1459, R1460, R1461, R1462, R1463, R1464, R1465, R1466, R1467, R1468, R1469, R1470, R1471, R1472, R1473, R1474, R1475, R1476, R1477, R1478, R1479, R1480, R1481, R1482, R1483, R1484, R1485, R1486, R1487, R1488, R1489, R1490, R1491, R1492, R1493, R1494, R1495, R1496, R1497, R1498, R1499, R1500, R1501, R1502, R1503, R1504, R1505, R1506, R1507, R1508, R1509, R1510, R1511, R1512, R1513, R1514, R1515, R1516, R1517, R1518, R1519, R1520, R1521, R1522, R1523, R1524, R1525, R1526, R1527, R1528, R1529, R1530, R1531, R1532, R1533, R1534, R1535, R1536, R1537, R1538, R1539, R1540, R1541, R1542, R1543, R1544, R1545, R1546, R1547, R1548, R1549, R1550, R1551, R1552, R1553, R1554, R1555, R1556, R1557, R1558, R1559, R1560, R1561, R1562, R1563, R1564, R1565, R1566, R1567, R1568, R1569, R1570, R1571, R1572, R1573, R1574, R1575, R1576, R1577, R1578, R1579, R1580, R1581, R1582, R1583, R1584, R1585, R1586, R1587, R1588, R1589, R1590, R1591, R1592, R1593, R1594, R1595, R1596, R1597, R1598, R1599, R1600, R1601, R1602, R1603, R1604, R1605, R1606, R1607, R1608, R1609, R1610, R1611, R1612, R1613, R1614, R1615, R1616, R1617, R1618, R1619, R1620, R1621, R1622, R1623, R1624, R1625, R1626, R1627, R1628, R1629, R1630, R1631, R1632, R1633, R1634, R1635, R1636, R1637, R1638, R1639, R1640, R1641, R1642, R1643, R1644, R1645, R1646, R1647, R1648, R1649, R1650, R1651, R1652, R1653, R1654, R1655, R1656, R1657, R1658, R1659, R1660, R1661, R1662, R1663, R1664, R1665, R1666, R1667, R1668, R1669, R1670, R1671, R1672, R1673, R1674, R1675, R1676, R1677, R1678, R1679, R1680, R1681, R1682, R1683, R1684, R1685, R1686, R1687, R1688, R1689, R1690, R1691, R1692, R1693, R1694, R1695, R1696, R1697, R1698, R1699, R1700, R1701, R1702, R1703, R1704, R1705, R1706, R1707, R1708, R1709, R1710, R1711, R1712, R1713, R1714, R1715, R1716, R1717, R1718, R1719, R1720, R1721, R1722, R1723, R1724, R1725, R1726, R1727, R1728, R1729, R1730, R1731, R1732, R1733, R1734, R1735, R1736, R1737, R1738, R1739, R1740, R1741, R1742, R1743, R1744, R1745, R1746, R1747, R1748, R1749, R1750, R1751, R1752, R1753, R1754, R1755, R1756, R1757, R1758, R1759, R1760, R1761, R1762, R1763, R1764, R1765, R1766, R1767, R1768, R1769, R1770, R1771, R1772, R1773, R1774, R1775, R1776, R1777, R1778, R1779, R1780, R1781, R1782, R1783, R1784, R1785, R1786, R1787, R1788, R1789, R1790, R1791, R1792, R1793, R1794, R1795, R1796, R1797, R1798, R1799, R1800, R1801, R1802, R1803, R1804, R1805, R1806, R1807, R1808, R1809, R1810, R1811, R1812, R1813, R1814, R1815, R1816, R1817, R1818, R1819, R1820, R1821, R1822, R1823, R1824, R1825, R1826, R1827, R1828, R1829, R1830, R1831, R1832, R1833, R1834, R1835, R1836, R1837, R1838, R1839, R1840, R1841, R1842, R1843, R1844, R1845, R1846, R1847, R1848, R1849, R1850, R1851, R1852, R1853, R1854, R1855, R1856, R1857, R1858, R1859, R1860, R1861, R1862, R1863, R1864, R1865, R1866, R1867, R1868, R1869, R1870, R1871, R1872, R1873, R1874, R1875, R1876, R1877, R1878, R1879, R1880, R1881, R1882, R1883, R1884, R1885, R1886, R1887, R1888, R1889, R1890, R1891, R1892, R1893, R1894, R1895, R1896, R1897, R1898, R1899, R1900, R1901, R1902, R1903, R1904, R1905, R1906, R1907, R1908, R1909, R1910, R1911, R1912, R1913, R1914, R1915, R1916, R1917, R1918, R1919, R1920, R1921, R1922, R1923, R1924, R1925, R1926, R1927, R1928, R1929, R1930, R1931, R1932, R1933, R1934, R1935, R1936, R1937, R1938, R1939, R1940, R1941, R1942, R1943, R1944, R1945, R1946, R1947, R1948, R1949, R1950, R1951, R1952, R1953, R1954, R1955, R1956, R1957, R1958, R1959, R1960, R1961, R1962, R1963, R1964, R1965, R1966, R1967, R1968, R1969, R1970, R1971, R1972, R1973, R1974, R1975, R1976, R1977, R1978, R1979, R1980, R1981, R1982, R1983, R1984, R1985, R1986, R1987, R1988, R1989, R1990, R1991, R1992, R1993, R1994, R1995, R1996, R1997, R1998, R1999, R2000, R

4 250SOWD 70900785 70900785 SPACER, 1/4(R(#)),.187 SWAGE ALUM.

SO30, SO31, SO32, SO33

1 2N3919S 3919 70418034 2N3919 NPN (SOT-23) XSISTOR SMT

Q501

11 3.3KS 3.3K 70200023 3.3K--1/8W--5%---smt
R168, R172, R268, R272, R368, R372,
R488, R520, R527, R534, R1110

8 330PFSN 330PF 70300056 330PFE NPO 100V 5% SMT 1206
C105, C123, C205, C223, C305, C323,
C457, C458

2 330S 330 70200071 330--1/8W--5%---SM
R656, R657

4 339H 339H 70418110 LM339D QUAD COMP IC - SMT SO14
U608, U609, U610, U611

16 33KS 33K 70200063 33K--1/8W--5%---SM
R123, R157, R223, R257, R323, R357,
R420, R438, R464, R482, R512, R528,
R542, R553, R560, R650

13 39KS 39K 70200091 39K--1/8W--5%---SMT 1206
R639, R704, R714, R816, R902, R1004,
R1014, R1104, R1114, R1216, R1302,
R1404, R1414

6 39PFS 39PF 70300012 39PF COG 50V 5% SMT 1206

8 4.7KS 4.7K 70200025 4.7K--1/8W--5%---smt
R602, R603, R604, R608, R630, R631,
R632, R633

16 4.99KPS 4.99kp 70200049 4.99K--1/8W--1%---SMT
R102, R128, R135, R162, R202, R228,
R235, R262, R302, R328, R335, R362,
R489, R490, R1013, R1111

40 4560H 4560 70418053 4560 DL OP AMP SOIC-8
U100, U101, U102, U103, U500, U201,
U202, U203, U300, U301, U502, U503,
U504, U505, U506, U507, U508, U509,
U504, U506, U601, U602, U603, U604,
U606, U607, U700, U800, U900, U1000,
U1100, U1200, U1300, U1400

10 4700PFS 4700PF 70300045 4700PFE X7R 50V 5% SMT 1206
C108, C126, C208, C226, C308, C326,
C406, C423, C432, C449

8 470PFS 470PF 70300047 470PFE COG 50V 5% SMT 1206
C402, C405, C428, C431, C504, C505,
C638, C659

12 470R6.3 470R6.3 70320183 470R6F-----20%---6.3VDC-EL--T&A
C110, C127, C210, C227, C310, C327,
C459, C460, C609, C610, C622, C623

28 47KS 47K 70200032 47K--1/8W--5%---SMT
R402, R406, R422, R431, R446, R450,
R466, R475, R500, R502, R513, R516,
R521, R524, R545, R568, R609, R612,
R614, R616, R624, R626, R634, R635,
R637, R645, R665, R667

12 47PFS 47PF 70300050 47PFE COG 50V 5% SMT
C107, C125, C207, C225, C307, C325,
C408, C425, C434, C451, C503, C515

16 47V50 47V50 70320182 47MF-----20%---50VDC--LL--T&A

C109, C114, C129, C133, C209, C214,
C229, C233, C309, C314, C329, C333,
C414, C460, C445

1 5.1KS 5.1K 70200094 5.1K--1/8W--5%---SMT1206
R652

6 5.62KPS 5.62KP 70200118 5.62K--1/8W--1%---SMT
R270, R909, R1020, R1120, R1309, R1420

1 560S 560 70200079 560--1/8W--5%---SMT1206
R655

16 6.81KP 6.81KP 70241043 6.81K--1/4W--1%---MF--T&R
R112, R113, R150, R151, R212, R213,
R250, R251, R312, R313, R350, R351,
R426, R427, R470, R471

46 6.8KS 6.8K 70200026 6.8K--1/8W--5%---SMT
R104, R105, R124, R125, R138, R139,
R158, R159, R204, R205, R224, R225,
R238, R239, R258, R259, R304, R325,
R324, R325, R338, R339, R358, R359,
R400, R401, R413, R414, R436, R437,
R442, R443, R444, R445, R457, R458,
R480, R481, R486, R487, R503, R504,
R510, R530, R532, R533

2 6534 6534 70466533 MPS-6533/34 TO-92 PNP TRANS T&A
Q603, Q604

10 680PFS 680PF 70300016 680PFE--COG-50V--5%---SMT--1206 PACK
C115, C132, C215, C232, C315, C332,
C412, C418, C438, C444
70200018 680--1/8W--5%---smt
R108, R142, R208, R242, R308, R342,
R410, R454, R505, R646

2 68KS 68K 70200033 68K--1/8W--5%---SMT
R540, R558

3 68PFS 68PF 70300042 68PFE COG 50V 5% SMT 1206
C608, C628, C629

8 68S 68 70200053 68--1/8W--5%---SMT
R119, R153, R219, R253, R319, R353,
R1006, R1128

6 75KS 75K 70200092 75K--1/8W--5%---SMT 1206
R202, R814, R1002, R1102, R1214, R1402

16 786 786 70460786 2SD-786S NPN TRANS T&A
Q100, Q101, Q102, Q103, Q200, Q201,
Q302, Q303, Q300, Q301, Q302, Q303,
Q401, Q402, Q404, Q405

14 8.2KS 8.2K 70200042 8.2K--1/8W--5%---SMT
R100, R106, R136, R143, R200, R206,
R236, R243, R300, R306, R336, R343,
R308, R531

12 89RCJ2 70600028 70600028 8C PRE-TTN, 100 CTR 2.5" JMP (SPLIT
VERSION)

1 J102, J103, J202, J203, J302, J303,
J402, J403, J407, J408, J501, J502

1 BISW2316 BISW2316 71322316 BINARY ROTARY SWITCH
SW1

1 CAB084 70600084 70600084 12C RIBBON CABLE ASSM 18"

J608

8 FVXLR325 71466325 71466325 Connector, Female XLR
J101, J105, J201, J205, J301, J305,
J404, J409

11 HIDMNI 71466214 71466214 2 TIP HID JACK NINS W/SPD
J400, J401, J405, J406, J602, J603,
J604, J605, J606, J607, J610

6 HIDSNI 71466217 71466217 STEREO HID JACK NINS W/SPD
J100, J104, J200, J204, J300, J304

3 J111S J111 70418138 J111 N-CH JFET SOT23-SMT
Q600, Q601, Q602

9 LEDG6 LEDG6 70450051 LED, T-1, GRN, W/500" SPCR - T&A
CR604, CR612, CR613, CR614, CR615,
CR616, CR617, CR618, CR619

32 LEDR6 LEDR6 70450050 LED, T-1, RED, W/500" SPCR - T&A
CR104, CR108, CR204, CR208, CR304,
CR308, CR409, CR415, CR505, CR509,
CR606, CR607, CR608, CR609, CR700,
CR701, CR702, CR703, CR704, CR705,
CR706, CR707, CR708, CR800, CR801,
CR802, CR803, CR804, CR805, CR806,
CR807, CR808

2 LEDY6 LEDY6 70450052 LED, T-1, YEL, W/500" SPCR - T&A
CR610, CR611

29 MPSA13S MPSA13S 70418051 MMBTA13LTI NPN DARL SMT
Q104, Q105, Q204, Q205, Q304, Q305,
Q400, Q403, Q500, Q700, Q702, Q707,
Q709, Q800, Q802, Q807, Q809, Q900,
Q902, Q1000, Q1002, Q1100, Q1102, Q1200,
Q1202, Q1300, Q1302, Q1400, Q1402

2 POT0258 71190258 71190258 10K - STD - 9MM
VR509, VR510

37 POT0259 71190259 71190259 50KB - STD - 9MM - W/DTT
VR100, VR101, VR103, VR104, VR105,
VR109, VR110, VR112, VR113, VR114,
VR200, VR201, VR203, VR204, VR205,
VR206, VR207, VR208, VR209, VR300,
VR302, VR303, VR305, VR304, VR305,
VR309, VR310, VR312, VR313, VR314,
VR404, VR406, VR412, VR413, VR503,
VR506, VR508

8 POT0260 71190260 71190260 10K(S)-STD-9MM POT
VR102, VR111, VR202, VR211, VR302,
VR311, VR414, VR415

9 POT0710 POT0710 71190710 10K(A)/10K(C) DUAL 12MM W/DTT
VR107, VR116, VR207, VR216, VR307,
VR316, VR405, VR411, VR504

9 POT0716 POT0716 71190716 50KBX2 DUAL 12MM ROT POT W/DTT
VR400, VR401, VR402, VR407, VR408,
VR409, VR500, VR501, VR507

1 RCA4N RCA4N 71466272 QUAD NICKEL RCA PHONO 24MM
J500

18 SPOT0123 71190123 71190123 50KW 20MM SLIDER W/DDT & TAP
VR700, VR701, VR702, VR703, VR704,
VR705, VR706, VR707, VR708, VR800,
VR801, VR802, VR803, VR804, VR805,
VR806, VR807, VR808

9 SPOT0158 71190158 71190158 10KY, 60MM STD FADER

VR106, VR115, VR206, VR215, VR306,
VR315, VR600, VR601, VR602

3 SPOT0159 71190159 71190159 10KY,60MM DUAL STD FADER

VR403, VR410, VR502

2 SW2356 71322356 71322356 DPDT PUSH BUTTON SW 2.8MM SQ SHAFT

SW600, SW601

1 TCONN12 73716722 73716722 12C-WTB-HDR-SHRD-.098"-TIN

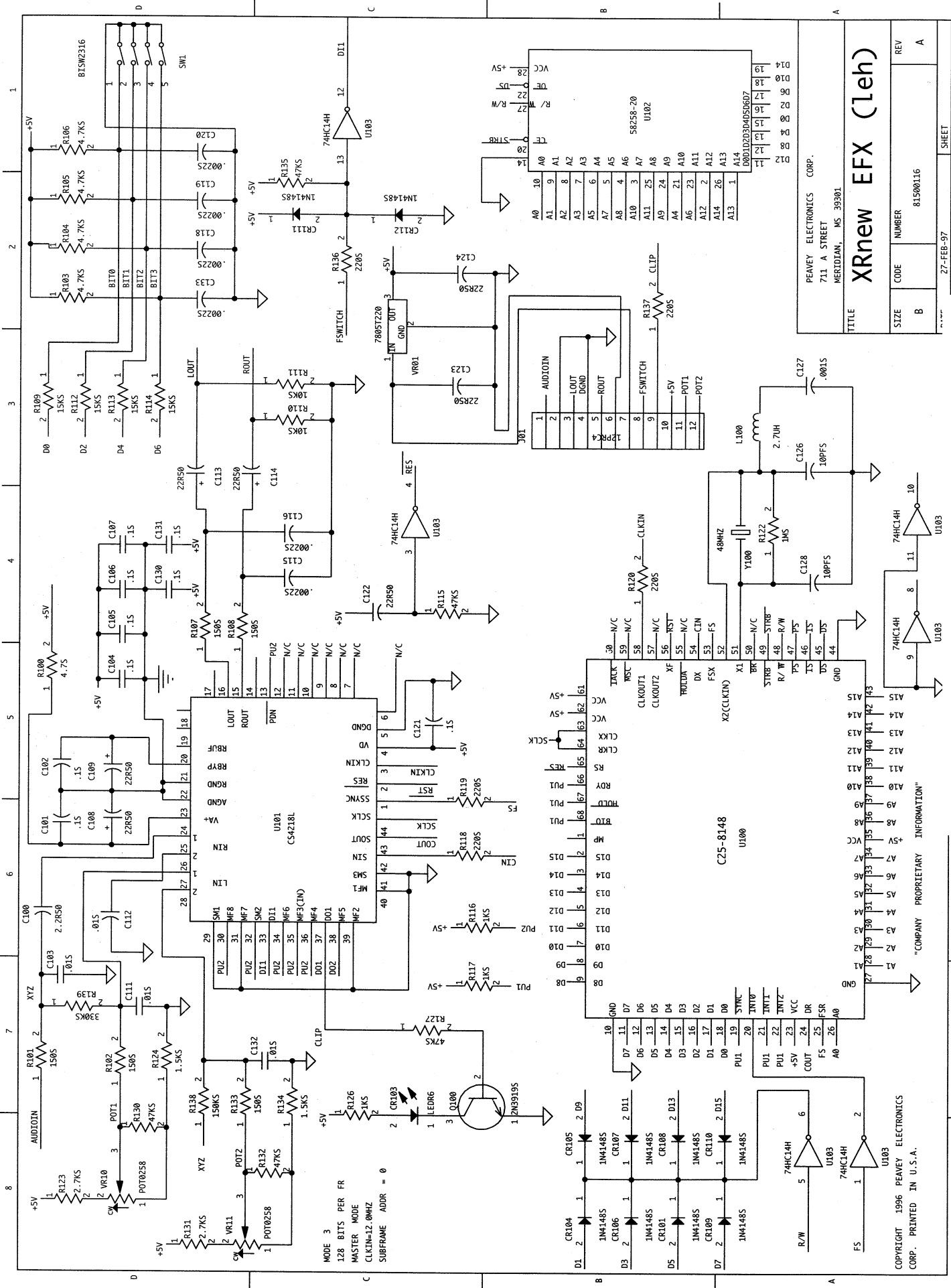
J106

1 WTCNN12 73716713 73716713 12 PIN WIRE TRAP CONN .098" SPACING

J503

1 WTCNN5 73716726 73716726 5 COND. WIRE TRAP CONN. .098" SPACING

J504

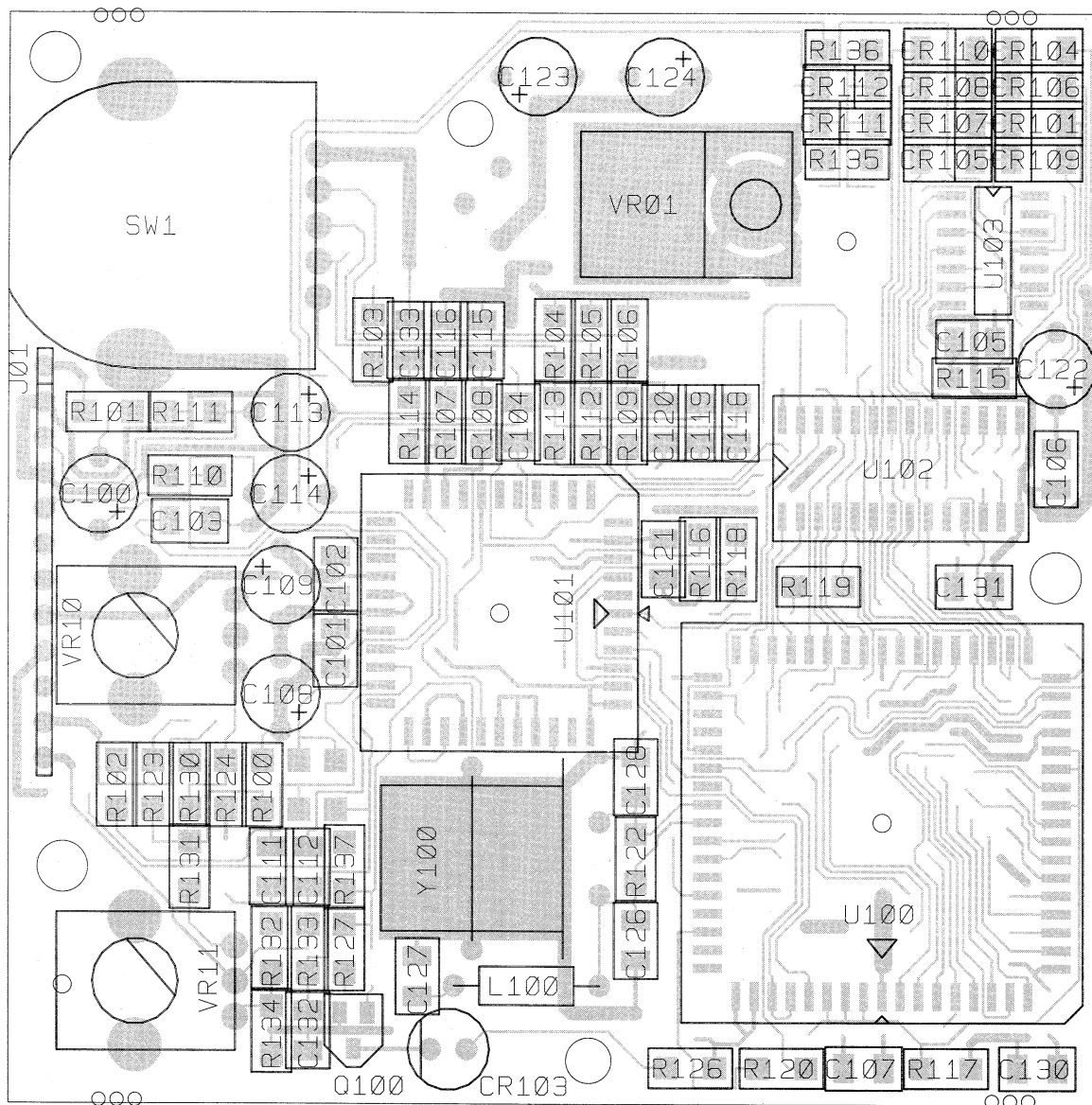


PEAVEY ELECTRONICS CORP.
711 A STREET
MERIDIAN, MS. 39301

XRnew EFX (1eh)

SIZE	CODE	NUMBER	REV
B		81500116	A

"COMPANY PROPRIETARY INFORMATION"



XR-E DIGITAL REVERB

BOARD NAME: XRDIGREV				
** QTY.	PART NAME	VALUE	PART NUMBER	DESCRIPTION AND DEVICE DESIGNATIONS

1	2.2R50	2.2R50	70320180	2.2MF-20%-50VDC-EL-T&A C100
2	.1S	.1	70300035	.1MF Z5U 50V 20% SMT 1206 C101, C102
1	.01S	.01	70300023	.01MF X7R 50V 10% SMT 1206 C103
4	.1S	.1	70300035	.1MF Z5U 50V 20% SMT 1206 C104, C105, C106, C107
2	22R50	22R50	70320181	22MF-20%-50VDC-EL-T&A C108, C109
2	.01S	.01	70300023	.01MF X7R 50V 10% SMT 1206 C111, C112
2	22R50	22R50	70320181	22MF-20%-50VDC-EL-T&A C113, C114
5	.0022S	.0022	70300019	.0022MF-X7R-10%-SMT C115,C116,C118,C119,C120
1	.1S	.1	70300035	.1MF Z5U 50V 20% SMT 1206 C121
3	22R50	22R50	70320181	22MF-20%-50VDC-EL-T&A C122, C123, C124
1	10PFS	10PF	70300010	10PF COG 50V 5% SMT 1206 C126
1	.001S	.001	70300036	.001MF X7R 50V 10% SMT 1206 C127
1	10PFS	10PF	70300010	10PF COG 50V 5% SMT 1206 C128
2	.1S	.1	70300035	.1MF Z5U 50V 20% SMT 1206 C130, C131
1	.01S	.01	70300023	.01MF X7R 50V 10% SMT 1206 C132
1	.0022S	.0022	70300019	.0022MF-X7R-10%-SMT C133
1	1N4148S	4148	70418026	1N4148 (LL34) DIODE SMT CR101
1	LED6	LED6	70450050	LED, T-1, RED, W/.500"SPCR-T&A CR103
9	1N4148S	4148	70418026	1N4148 (LL34) DIODE SMT CR104,CR105,CR106,CR107,CR108, CR109,CR110,CR111,CR112
1	12PRC4	12PRC4	70600057	12C PRE-TIN.098 CTR 4 JUMPER J01
1	2.7UH	2.7UH	70502027	2.7 MICRO INDUCTOR L100
1	2N3919S	3919	70418034	2N3919 NPN (SOT-23)XSISTOR SMT Q100
1	4.7S	4.7	70200041	4.7-1/8W-5%-SMT R100
2	150S	150	70200014	150-1/8w-5%-smt R101, R102
4	4.7KS	4.7K	70200025	4.7K-1/8W-5%-smt R103, R104, R105, R106
2	150S	150	70200014	150-1/8w-5%-smt R107, R108
1	15KS	15K	70200080	15K-1/8W-5%-SM R109
2	10KS	10K	70200028	10K-1/8W-5%-SMT R110, R111
3	15KS	15K	70200080	15K-1/8W-5%-SM R112, R113, R114
1	47KS	47K	70200032	47K-1/8W-5%-SMT R115
2	1KS	1K	70200019	1k-1/8w-5%-smt R116, R117
3	220S	220	70200016	220-1/8w-5%-smt R118, R119, R120
1	1MS	1M	70200036	1M-1/8W-5%-SMT R122
1	2.7KS	2.7K	70200061	2.7K-1/8w-5%-smt R123
1	1.5KS	1.5K	70200020	1.5K-1/8W-5%-smt R124
1	1KS	1K	70200019	1k-1/8w-5%-smt R126
2	47KS	47K	70200032	47K-1/8W-5%-SMT R127, R130
1	2.7KS	2.7K	70200061	2.7K-1/8w-5%-smt R131
1	47KS	47K	70200032	47K-1/8W-5%-SMT R132
1	150S	150	70200014	150-1/8w-5%-smt R133
1	1.5KS	1.5K	70200020	1.5K-1/8W-5%-smt R134
1	47KS	47K	70200032	47K-1/8W-5%-SMT R135
2	220S	220	70200016	220-1/8w-5%-smt R136, R137
1	150KS	150K	70200109	150K-1/8W-5%-SM R138

1	330KS	330K	70200073	330K-1/8W-5%-SM R139
1	BISW2316	BISW2316	71322316	BINARY ROTARY SWITCH SW1
1	C25-8148	C25-8148	70418148	16-BIT MASKED DSP, 68 PLCC U100
1	CS4216L	CS4216L	LHAND	LHAND U101
1	58258-20	58258-20	70418068	32K X8 STATIC RAM IC-SMT U102
1	74HC14H	74HC14	70418058	74HC14 HEX. SCHMITT SOIC14 U103
1	7805T220	7805	70427805	VR CT REG VR01
2	POT0258	71190258	71190258	10K - STD - 9MM VR10, VR11
1	48MHZ	48MHZ	70800030	48 MHZ CRYSTAL Y100
