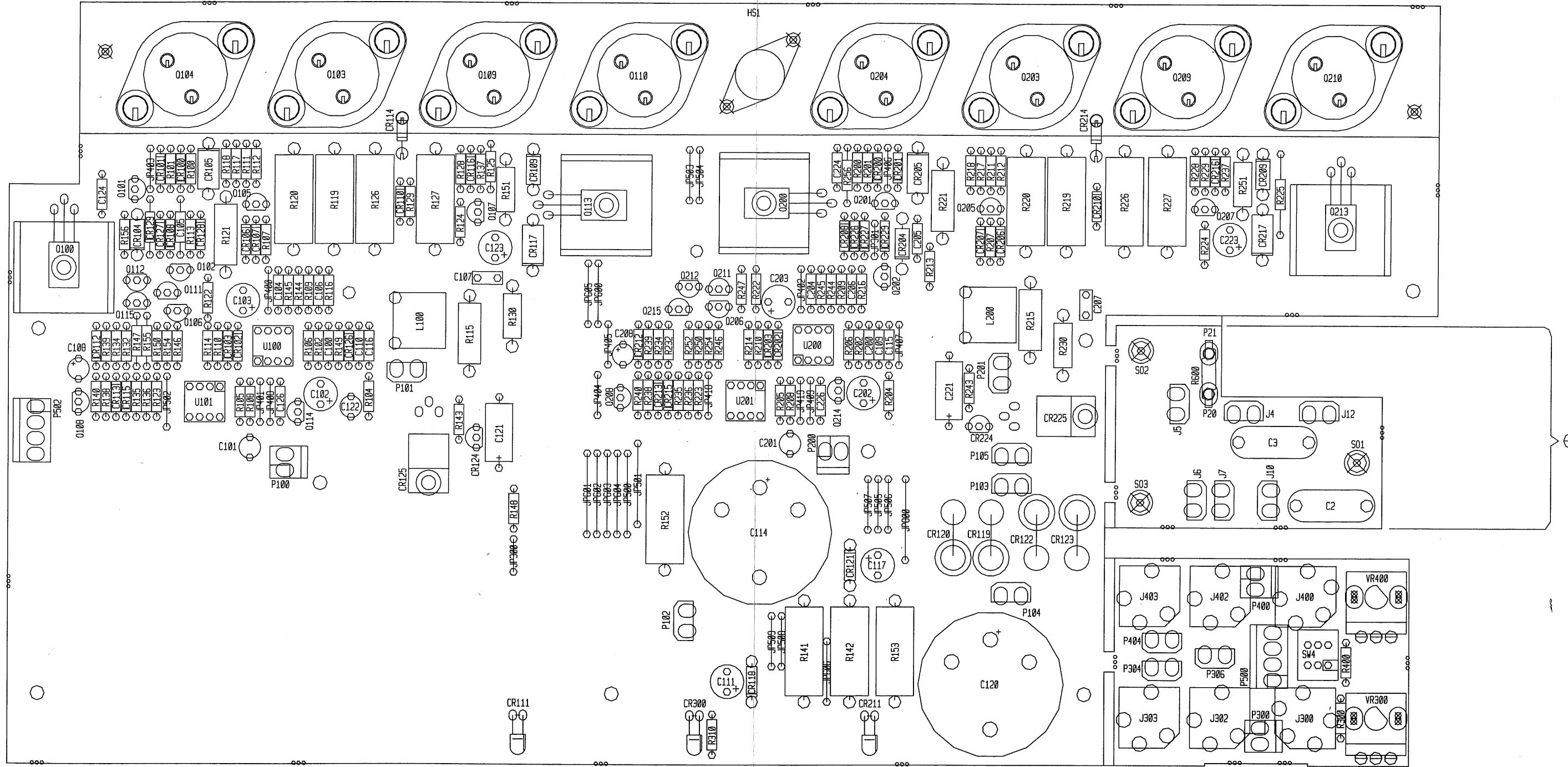


COPYRIGHT 1995 PEAVEY ELECTRONICS CORP. PRINTED IN U.S.A.

COMPANY PROPRIETARY INFORMATION			
PEAVEY ELECTRONICS CORP. 711 A STREET Merriden, Massachusetts 01301			
TITLE PV26C DRIVE BOARD			
SIZE D	CODE	NUMBER #81501609	REV A
DATE 22 FEB 96	SHEET 1 OF 2		



PV 2.6C DRIVE

⊖ For EXPORT: do NOT insert the following parts
 J5, J4, R600, P20, P21, J7, C3, C2, J6, J10, S01, S02, S03 & J12

BOARD NAME: PV2.6C DRV
 ** QTY. NAME VALUE NUMBER DESCRIPTION AND DEVICE DESIGNATIONS *****

QTY.	NAME	VALUE	NUMBER	DESCRIPTION AND DEVICE DESIGNATIONS	QTY.	NAME	VALUE	NUMBER	DESCRIPTION AND DEVICE DESIGNATIONS	QTY.	NAME	VALUE	NUMBER	DESCRIPTION AND DEVICE DESIGNATIONS	QTY.	NAME	VALUE	NUMBER	DESCRIPTION AND DEVICE DESIGNATIONS
2	MR752CD	MR752CD	70400752	MR752/P600D 200V, 6A SIL DIODE - CATH DOWN	1	7205	7205	70467205	SDS-7205 CASE306 PNP T&A Q201	1	47K	47K	70240031	47K-1/4W-5%-CF-T&R R156					
1	SBS14	SBS14	70460014	SBS14 8V TO-92 BI-DIRECTIONAL SWITCH T&A	1	2N5550	5550	70465550	2N5550 TO-92 NPN TRANS T&A Q202	1	4.99KP1	4.99KP1	70241060	4.99K-1/4W-1%-MF-T&R R160					
1	SAC187	SAC187	70400187	SAC187 200V TO220 TRIAC	2	83100	83100	70483100	SJ-83100, NPN, 3 AMP, 100V, METRIC TO-3 TRANS Q203, Q204	1	20KP1	20KP1	70241040	20K-1/4W-1%-MF-T&R R161					
2	.01DVLNP	.01DVLNP	70320104	.01 MFD 125VDC DVL MYLAR +0-20% C2, C3	11	1N4148	4148	70464148	1N4148 75V 10MA SILICON DIODE CR126, CR127, CR128, CR129, CR130, CR131, CR132, CR200, CR201, CR202, CR203	1	4.99KP1	4.99KP1	70241060	4.99K-1/4W-1%-MF-T&R R162					
1	10PF	10PF	70340050	10PF-5%-T/C-T&R C100	1	MR812	MR812	70404933	MR812 FAST RECOVERY DIODE CR204	1	20KP1	20KP1	70241040	20K-1/4W-1%-MF-T&R R163					
1	2.2R50NP	2.2R50NP	70320184	2.2MF-20%-50VDC-NP-T&A C101	1	MR502	MR502	70400502	MR502/1N5402 200V, 3A SILICON DIODE CR205	1	33	33	70240004	33-1/4W-5%-CF-T&R R200					
2	47V50	47V50	70320182	47MF-20%-50VDC-LL-T&A C102, C103	3	1N4148	4148	70464148	1N4148 75V 10MA SILICON DIODE CR206, CR207, CR208	2	73100	73100	70473100	SJ-73100, 3 AMP, 100V, METRIC TO-3, PNP TRANS Q209, Q210					
2	39PF	39PF	70340052	39PF-50VDC-T/C-T&R C104, C105	1	MR812	MR812	70404933	MR812 FAST RECOVERY DIODE CR209	1	5332HS	5332	70405332	SJE-5332 120V .3A CASE-77 PNP W/ HEATSINK Q213					
1	10PF	10PF	70340050	10PF-5%-T/C-T&R C106	1	1N4148	4148	70464148	1N4148 75V 10MA SILICON DIODE CR210	1	J174	J174	70460174	J-174 30V TO-92 P-CHAN FET T&A Q214					
1	.1SF	.1SF	70330113	0.10 MFD 10% 100V STCK FILM T&A C107	1	RALEDYSL	RALEDYSL	70450055	LED, T-1, YEL, W/STOPPER LEAD T&A CR211	1	33	33	70240004	33-1/4W-5%-CF-T&R R100					
1	10R50L	10R50L	70320185	10MF-20%-50VDC-LL-T&A C108	1	1K	1K	70240017	1K-1/4W-5%-CF-T&R R101	1	1K	1K	70240017	1K-1/4W-5%-CF-T&R R204					
2	.1	.1	70340100	.1MF+80-20%-50VDC-AXL-T&R C109, C110	2	1N4148	4148	70464148	1N4148 75V 10MA SILICON DIODE CR212, CR213	1	48.7KP1	48.7KP1	70241068	48.7K-1/4W-1%-MF-T&R R207					
1	47V50	47V50	70320182	47MF-20%-50VDC-LL-T&A C111	1	13886	13886	70413886	SZ-13886-2 DUAL DIODE CR214	1	1K	1K	70240017	1K-1/4W-5%-CF-T&R R104					
1	4700V80	4700V80	70320148	4700MF - 20% - 80VDC - EL -R/S C114	2	1N4148	4148	70464148	1N4148 75V 10MA SILICON DIODE CR215, CR216	1	33K	33K	70240030	33K-1/4W-5%-CF-T&R R105					
2	.1	.1	70340100	.1MF+80-20%-50VDC-AXL-T&R C115, C116	1	MR502	MR502	70400502	MR502/1N5402 200V, 3A SILICON DIODE CR217	1	2.1KP1	2.1KP1	70240092	2.1K 1% 1/4W MF T&R R106					
1	47V50	47V50	70320182	47MF-20%-50VDC-LL-T&A C117	1	SBS14	SBS14	70460014	SBS14 8V TO-92 BI-DIRECTIONAL SWITCH T&A CR224	1	10	10	70240003	10-1/4W-5%-CF-T&R R107					
1	4700V80	4700V80	70320148	4700MF - 20% - 80VDC - EL -R/S C120	1	SAC187	SAC187	70400187	SAC187 200V TO220 TRIAC CR225	1	22K	22K	70240029	22K-1/4W-5%-CF-T&R R108					
1	2.2A50NP	2.2A50NP	70320010	2.2MFD 20% 50V NP EL T&R C121	6	1N4148	4148	70464148	1N4148 75V 10MA SILICON DIODE CR227, CR228, CR229, CR230, CR231, CR232	1	2.1KP1	2.1KP1	70240092	2.1K 1% 1/4W MF T&R R109					
1	2.2R50NP	2.2R50NP	70320184	2.2MF-20%-50VDC-NP-T&A C122	4	1N4744	4744	70440102	SZG40102 15V 5% ZENER DIODE CR233, CR234, CR235, CR236	1	10K	10K	70240025	10K-1/4W-5%-CF-T&R R110					
1	47V50	47V50	70320182	47MF-20%-50VDC-LL-T&A C123	1	RALEDGSL	RALEDGSL	70450054	LED, T-1, GRN, W/STOPPER LEAD T&A CR300	2	1.5K	1.5K	70240018	1.5K-1/4W-5%-CF-T&R R111, R112					
1	100PF	100PF	70340054	100PF-10%-50VDC-T/C-T&R C124	1	HS3002	98003002	98003002	L-BAR HEATSINK 1400BG/240SC HS1	1	330	330	70240014	330-1/4W-5%-CF-T&R R113					
1	27PF	27PF	70340066	27PF-10%-50VDC-T/C-T&R C126	6	SPD	73716194	73716194	.250 PC MNT SPADE .093 PCB J4, J5, J6, J7, J10, J12	1	68	68	70240009	68-1/4W-5%-CF-T&R R114					
1	10PF	10PF	70340050	10PF-5%-T/C-T&R C200	1	HIDSNI	71466217	71466217	STEREO HID JACK NINS W/SPD J300'	1	47W1	47W1	70210011	47-1W-5%-MO-T&R R115					
1	2.2R50NP	2.2R50NP	70320184	2.2MF-20%-50VDC-NP-T&A C201	2	HIDMNI	71466214	71466214	2 TIP HID JACK NINS W/SPD J302, J303	1	48.7KP1	48.7KP1	70241068	48.7K-1/4W-1%-MF-T&R R116					
2	47V50	47V50	70320182	47MF-20%-50VDC-LL-T&A C202, C203	1	HIDSNI	71466217	71466217	STEREO HID JACK NINS W/SPD J400	1	470	470	70240015	470-1/4W-5%-CF-T&R R117					
2	39PF	39PF	70340052	39PF-50VDC-T/C-T&R C204, C205	2	HIDMNI	71466214	71466214	2 TIP HID JACK NINS W/SPD J402, J403	1	100FP	100FP	70240096	100FP-1/4W-5%-FP-T&R R118					
1	10PF	10PF	70340050	10PF-5%-T/C-T&R C206	2	3UH	3UH	70519939	3 UHY INDUCTOR L100, L200	2	.33W5	.33W5	70250003	.33-5W-10%-WW-AXL R119, R120					
1	.1SF	.1SF	70330113	0.10 MFD 10% 100V STCK FILM T&A C207	2	MMP	MMP	73711812	R93-12 PN C.B. MALE MOLEX PIN P20, P21	1	4.7KW1	4.7KW1	70210006	4700-1W-5%-MO-T&R R121					
1	10R50L	10R50L	70320185	10MF-20%-50VDC-LL-T&A C208	1	SPX2	SPX2	XXXXXXX	2 EACH OF STAKE PINS P100	1	150	150	70240001	150-1/4W-5%-CF-T&R R122					
1	2.2A50NP	2.2A50NP	70320010	2.2MFD 20% 50V NP EL T&R C221	5	SPD	73716194	73716194	.250 PC MNT SPADE .093 PCB P101, P102, P103, P104, P105	1	68K	68K	70240032	68K-1/4W-5%-CF-T&R R123					
1	47V50	47V50	70320182	47MF-20%-50VDC-LL-T&A C223	1	SPX2	SPX2	XXXXXXX	2 EACH OF STAKE PINS P200	1	470	470	70240015	470-1/4W-5%-CF-T&R R124					
1	100PF	100PF	70340054	100PF-10%-50VDC-T/C-T&R C224	1	SPD	73716194	73716194	.250 PC MNT SPADE .093 PCB P201	1	100FP	100FP	70240096	100FP-1/4W-5%-FP-T&R R125					
1	27PF	27PF	70340066	27PF-10%-50VDC-T/C-T&R C226	1	SPX2	SPX2	XXXXXXX	2 EACH OF STAKE PINS P300	2	.33W5	.33W5	70250003	.33-5W-10%-WW-AXL R126, R127					
4	2.2R50	2.2R50	70320180	2.2MF-20%-50VDC-EL-T&A C227, C228, C229, C230	2	SPD	73716194	73716194	.250 PC MNT SPADE .093 PCB P304, P306	2	1.5K	1.5K	70240018	1.5K-1/4W-5%-CF-T&R R128, R129					
4	1N4148	4148	70464148	1N4148 75V 10MA SILICON DIODE CR100, CR101, CR102, CR103	1	SPX2	SPX2	XXXXXXX	2 EACH OF STAKE PINS P400	1	22W1	22W1	70210001	22-1W-5%-MO-T&R R130					
1	MR812	MR812	70404933	MR812 FAST RECOVERY DIODE CR104	1	SPD	73716194	73716194	.250 PC MNT SPADE .093 PCB P404	1	1K	1K	70240017	1K-1/4W-5%-CF-T&R R132					
1	MR502	MR502	70400502	MR502/1N5402 200V, 3A SILICON DIODE CR105	2	SPX4	SPX4	XXXXXXX	4 EACH OF STAKE PINS P500, P502	2	47K	47K	70240031	47K-1/4W-5%-CF-T&R R134, R135					
3	1N4148	4148	70464148	1N4148 75V 10MA SILICON DIODE CR106, CR107, CR108	1	5331HS	5331	70405331	SJE-5331 CASE-77 NPN W/ HEATSINK Q100	1	68K	68K	70240032	68K-1/4W-5%-CF-T&R R136					
1	MR812	MR812	70404933	MR812 FAST RECOVERY DIODE CR109	1	7205	7205	70467205	SDS-7205 CASE306 PNP T&A Q101	1	3.9K	3.9K	70241093	3.9K-1/4W-5%-CF-AXL R137					
1	1N4148	4148	70464148	1N4148 75V 10MA SILICON DIODE CR110	1	2N5550	5550	70465550	2N5550 TO-92 NPN TRANS T&A Q102	1	10K	10K	70240025	10K-1/4W-5%-CF-T&R R138					
1	RALEDYSL	RALEDYSL	70450055	LED, T-1, YEL, W/STOPPER LEAD T&A CR111	2	83100	83100	70483100	SJ-83100, NPN, 3 AMP, 100V, METRIC TO-3 TRANS. Q103, Q104	1	82K	82K	70240033	82K-1/4W-5%-CF-T&R R139					
2	1N4148	4148	70464148	1N4148 75V 10MA SILICON DIODE CR112, CR113	1	6531	6531	70466531	MPS-6531 TO92 NPN TRANS. T&A Q105	1	1.5K	1.5K	70240018	1.5K-1/4W-5%-CF-T&R R140					
1	13886	13886	70413886	SZ-13886-2 DUAL DIODE CR114	1	6534	6534	70466533	MPS-6533/34 TO-92 PNP TRANS T&A Q107	2	700W5	700W5	70250061	700-5W-10%-WW-AXL R141, R142					
2	1N4148	4148	70464148	1N4148 75V 10MA SILICON DIODE CR115, CR116	1	MPSA13I	A13	70460013	MPS-A13 NPN DARLINGTON TRANS T&A Q108	1	47K	47K	70240031	47K-1/4W-5%-CF-T&R R143					
1	MR502	MR502	70400502	MR502/1N5402 200V, 3A SILICON DIODE CR117	2	73100	73100	70473100	SJ-73100, 3 AMP, 100V, METRIC TO-3, PNP TRANS Q109, Q110	1	4.7	4.7	70240002	4.7-1/4W-5%-CF-T&R R148					
1	1N4744	4744	70440102	SZG40102 15V 5% ZENER DIODE CR118	1	5332HS	5332	70405332	SJE-5332 120V .3A CASE-77 PNP W/ HEATSINK Q113	1	1M	1M	70240039	1M-1/4W-5%-CF-T&R R164					
2	MR752CD	MR752CD	70400752	MR752/P600D 200V, 6A SIL DIODE - CATH DOWN CR119, CR120	1	J174	J174	70460174	J-174 30V TO-92 P-CHAN FET T&A Q114	1	1.5KW1	1.5KW1	70210007	1.5K-1W-5%-MO-T&R R151					
1	1N4744	4744	70440102	SZG40102 15V 5% ZENER DIODE CR121	1	5331HS	5331	70405331	SJE-5331 CASE-77 NPN W/ HEATSINK Q200	2	2KW5	2KW5	70250063	2K-5W-10%-WW-AXL R152, R153					

2	10K	10K	70240025	10K-1/4W-5%—CF-T&R R267, R268
1	100K	100K	70240034	100K-1/4W-5%—CF-T&R R269
1	22K	22K	70240029	22K-1/4W-5%—CF-T&R R270
1	100K	100K	70240034	100K-1/4W-5%—CF-T&R R271
1	22K	22K	70240029	22K-1/4W-5%—CF-T&R R272
2	10K	10K	70240025	10K-1/4W-5%—CF-T&R R273, R274
1	100K	100K	70240034	100K-1/4W-5%—CF-T&R R275
1	22K	22K	70240029	22K-1/4W-5%—CF-T&R R276
1	4.7K	4.7K	70240023	4.7K-1/4W-5%—CF-T&R R277
1	1K	1K	70240017	1K-1/4W-5%—CF-T&R R300
1	1.5K	1.5K	70240018	1.5K-1/4W-5%—CF-T&R R310
1	1K	1K	70240017	1K-1/4W-5%—CF-T&R R400
1	CL30	CL30	70240202	INRUSH CURRENT LIMITER R600
3	250STW	70901856	70901856	SPCR, 1/4, R(#4), .187 SW, AL SO1, SO2, SO3
1	SUZPP	SUZPP	71322251	SUZ P/P SWITCH PC MOUNT SW4
1	4560	4560	70414560	4560 DUAL OP AMP IC U100
1	13080	13080	70413080	LM3080N CUSTOM SELECTED U101
1	4560	4560	70414560	4560 DUAL OP AMP IC U200
1	13080	13080	70413080	LM3080N CUSTOM SELECTED U201
1	4560	4560	70414560	4560 DUAL OP AMP IC U300
2	POT0701	71190701	71190701	50KB 12MM HPC ROTARY POT W/DTT VR300, VR400
