

#### NOTES:

Tube	Pin #	VDC
V1	6	
V1	3	
V2	1	
V2	6	
V2	3/8	
V3/V4	3	
V3/V4	4	

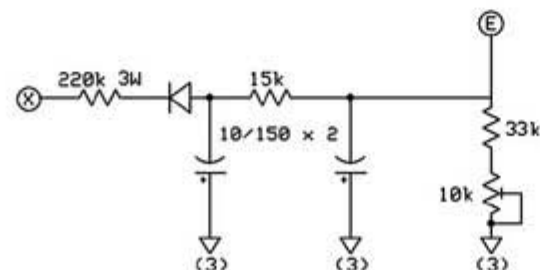
V1 = EF86

V2 = 12AX7

V3/V4 = 6V6

V5 = 5AR4

Ground points 1-4 are connected to star ground chassis reference point. Ground point 5 is connected to separate chassis reference point at output tubes.



DR Z		
Z28		
	Rev 1.0	Page 1
	3/03/2006	