

BILL OF MATERIAL REPORT

---

REPORT DATE/TIME: 3/9/2005 4:03:39 PM

BOARD NAME: FX Output Jack      ASSEMBLY LEVEL NUMBER: 99061650

PROJECT NUMBER: P0300087      DESIGNER: FJE

Qty.	Part #	Description	Reference Designators
<hr style="border-top: 1px dashed black;"/>			
8	602-70200168-1	RES SMD 0805 1/10W 5% 10K	R25 R26 R27 R28 R29 R30 R31 R32
31	602-70200169-1	RES SMD 0805 1/10W 5% 22K	R46 R47 R48 R49 R50 R51 R52 R53 R54 R55 R56 R57 R58 R59 R60 R61 R62 R63 R64 R65 R66 R67 R68 R69 R70 R71 R72 R73 R74 R75 R76
96 R193	602-70200174-1	RES SMD 0805 1/10W 1% 10K	R190 R191 R192  R194 R195 R196 R197 R198 R199 R200 R201 R202 R203 R204 R205 R206 R207 R208 R209 R210 R211 R212 R213 R214 R215 R216 R217 R218 R219 R220 R221 R222 R223 R224 R225 R226 R227 R228 R229 R230 R231 R232 R233 R234 R235 R236 R237 R238 R239 R240 R241 R242 R243 R244 R245 R246 R247 R248 R249 R250 R251 R252 R253 R254 R255 R256 R257 R258 R259 R260 R261 R262 R263 R264 R265 R266 R267 R268 R269 R270 R271 R272 R273 R274 R275 R276 R277 R278 R279 R280 R281 R282 R283 R284 R285
7	602-70200178-1	RES SMD 0805 1/10W 5% 100K	R33 R34 R35 R36 R37 R38 R39

53 602-K11401000-1 RES SMD 0805 1/8W 1% 100R T&R (KW000103) R85 R86  
R87 R88

R89 R90 R91 R92  
R93 R94 R95 R96  
R97 R98 R99 R100  
R101 R102 R103 R104  
R105 R106 R107 R108  
R109 R110 R111 R112  
R113 R114 R115 R116  
R117 R118 R119 R120  
R121 R122 R123 R124  
R125 R126 R127 R128  
R129 R130 R131 R132  
R133 R134 R135 R136  
R137

8	70200049	4.99K	1/4W	1%	MF	1206	R286 R287 R292 R293 R294 R295 R300 R301
12	70200051	10K	1/4W	1%	MF	1206	R176 R177 R178 R179 R180 R181 R182 R183 R184 R187 R188 R189
2	70200060	100	1/4W	1%	MF	1206	R158 R159
8	70200069	1.1K	1/4W	1%	MF	1206	R77 R78 R79 R80 R81 R82 R83 R84
8	70200084	6.81K	1/4W	1%	MF	1206	R138 R139 R140 R141 R142 R143 R144 R145
8	70200126	100K	1/4W	1%	MF	1206	R150 R151 R152 R153 R154 R155 R156 R157
8	70200143	1.21K	1/4W	1%	MF	1206	R166 R167 R168 R169 R170 R171 R172 R173
4	70200144	8.25K	1/4W	1%	MF	1206	R174 R175 R185 R186
6	70200230	22.1K		1/4W	1%	MF 1206	R40 R41 R42 R43 R44 R45
4	70200348	10		1/4W	1%	MF 1206	R146 R147 R148 R149
24	70200413	2.67K	1/10W	1%	MF	0805	R1 R2 R3 R4 R5 R6 R7 R8 R9 R10 R11 R12 R13 R14 R15 R16

						R17 R18 R19 R20 R21 R22 R23 R24
8	70241027	15.0K	1/4W	1%	MF AXL	R288 R289 R290 R291 R296 R297 R298 R299
35	70300085	0.1UF	50V	80-20%	Z5U 0805	C108 C109 C110 C111 C112 C113 C114 C115 C116 C117 C118 C119 C120 C121 C122 C123 C124 C125 C126 C127 C128 C129 C130 C131 C132 C133 C134 C135 C136 C137 C138 C139 C140 C141 C142
34	70300087	39PF	50V	5%	NPO 0805	C57 C58 C59 C60 C61 C62 C63 C64 C65 C66 C67 C68 C69 C70 C71 C72 C73 C74 C75 C76 C77 C78 C79 C80 C81 C82 C100 C101 C102 C103 C104 C105 C106 C107
12	70300090	470PF	50V	5%	NPO 0805	C2 C3 C4 C5 C6 C7 C8 C9 C10 C11 C12 C13
1	70320180	2.2UF	50V	20%	EL RAD	C147
16	70320182	47UF	50V	20%	EL RAD	C83 C84 C85 C86 C87 C88 C89 C90 C91 C92 C93 C94 C95 C96 C97 C98
1	70320264	100UF	63V	20%	EL RAD	C1
4	70320343	1000UF	6.3V	20%	EL RAD	C143 C144 C145 C146
43	70320344	47UF	35V	20%	EL RAD	C14 C15 C16 C17 C18 C19 C20 C21 C22 C23 C24 C25 C26 C27 C28 C29 C30 C31 C32 C33 C34 C35 C36 C37 C38 C39 C40 C41 C42 C43 C44 C45 C46 C47 C48 C49 C50 C51 C52 C53 C54 C55 C56

1	70320350	100UF 16V 20% EL RAD	C99
24	70418026	1N4148 (LL34) DIODE SMT	D1 D2 D3 D4 D5 D6 D7 D8 D9 D10 D11 D12 D13 D14 D15 D16 D17 D18 D19 D20 D21 D22 D23 D24
8	70418135	2N3904 NPN SOT23	Q1 Q2 Q3 Q4 Q5 Q6 Q7 Q8
4	70418230	100PF/FERRITE T FLTR SMT	L1 L2 L3 L4
17	70418506	4565 DUAL OPAMP SOIC8W	U1 U2 U3 U4 U5 U6 U7 U8 U9 U10 U11 U12 U13 U14 U15 U16 U17
8	70460786	2SD786S NPN TRANS RAD	Q9 Q10 Q11 Q12 Q13 Q14 Q15 Q16
27	71466217	STEREO HID JACK NINS W/SPD	J9 J10 J11 J12 J13 J14 J15 J16 J17 J18 J19 J20 J21 J22 J23 J24 J25 J26 J27 J28 J29 J30 J31 J32 J33 J34 J35
2	71466324	MXLR NC3MAV A-SER VERT	J1 J2
2	71466474	DUAL RCA 24MM VERT	J7 J8
4	71466478	FXLR AA-SER 3PINS VERT	J3 J4 J5 J6
1	73715218	USB A VERT	P8
1	73715219	USB B VERT	P1
1	73717198	6 HDR V JST-EHR 2.5MM TIN	P7
3	73719146	16 FLT FLX 1.0MM CONN SMT	P2 P3 P4
1	73719151	30 FLT FLX 1.0MM CONN SMT	P5
1	73719154	8 FLT FLX 1.0MM CONN SMT	P6
6	K702009	100 1/10W 5% MF 0805	R160 R161 R162 R163 R164 R165

1 PCB\_PAD46

PCB PAD #4-#6 MACH SCRW

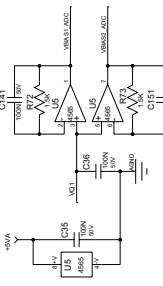
HW1

-----  
END OF BILL OF MATERIAL REPORT  
-----

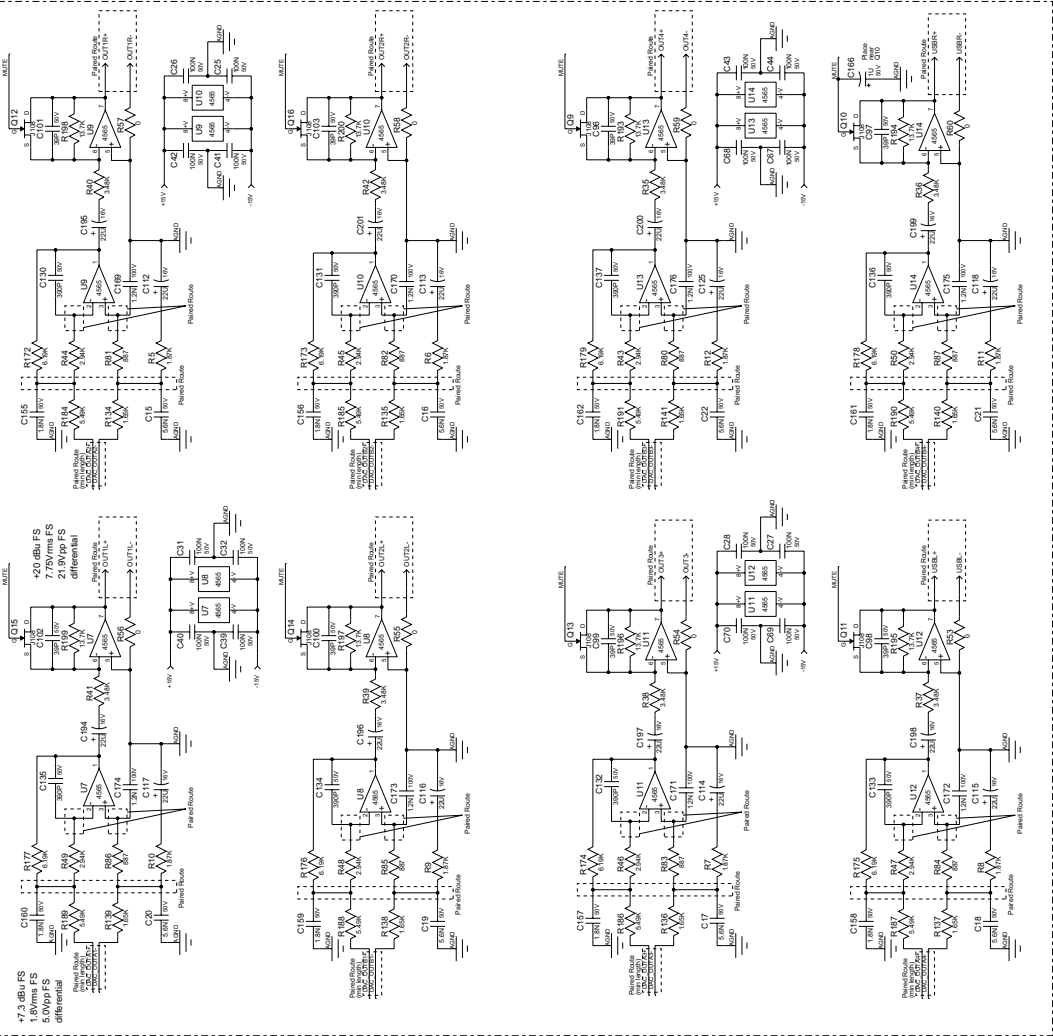
REV	Entg	Date:	Revision Description
A			
B			
C			
D			
E			
F			

**INDEX**

SHEET	DESCRIPTION
1	ANALOG INPUT/OUTPUT FILTERS
2	COREC. LCD DRIVER POWER SUPPLY
3	DSP ROM USB



**PLACE CIRCUITRY CLOSE TO DAC OUT**



**U13 DSP  
FX SERIES: 70418612  
S-32 MIXER: 70418510**

BARE PCB: 72101085  
FX-SERIES MIXERS PCB ASSY: 99081820  
S-32 MIXER PCB ASSY: 99061880

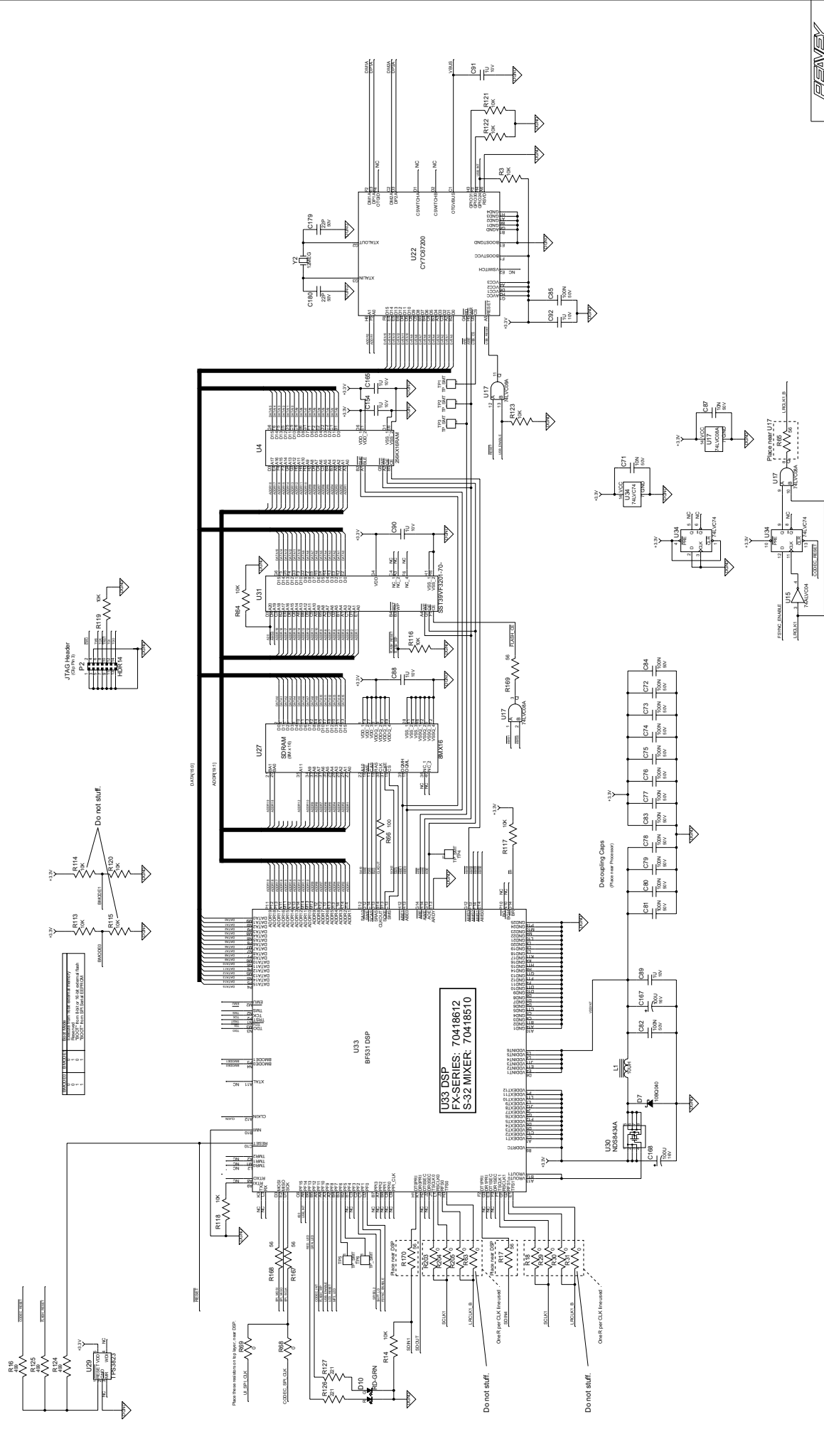
Copyright Pharray Electronics Corporation 2004.

**FX EFFECTS**  
FX-SERIES AND S32 CONSOLES  
Pharray Electronics Corporation  
10000 Pharray Way  
Pharray, CA 94024  
Tel: 415.947.1000  
Fax: 415.947.1001  
Web: www.pharray.com

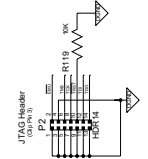
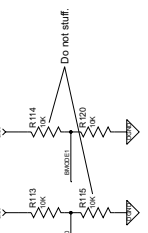
Note: All thru-hole resistors are 1/4 Watt unless otherwise indicated.  
All surface resistors are 1/10 Watt.  
All SMT capacitors are 100 pF.  
Note: Capacitor Values are indicated as follows:  
val P = pF (picofarads) val \* 10 = nF (nanofarads) val \* 100 = uF (microfarads) val \* 1000 = uF (microfarads) val \* 10 = nF (nanofarads)





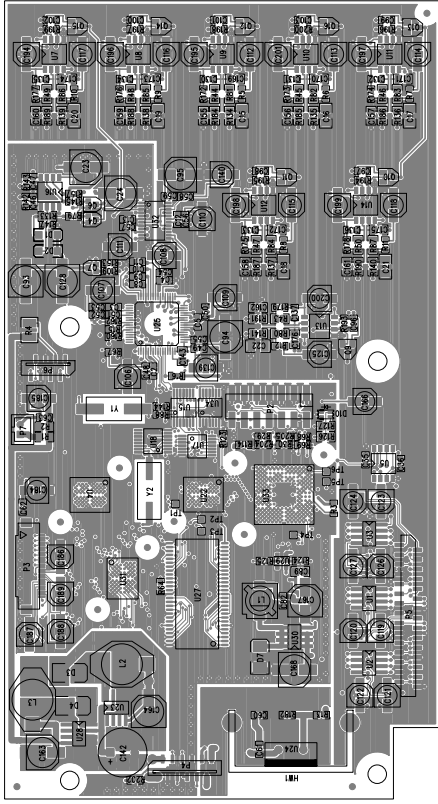


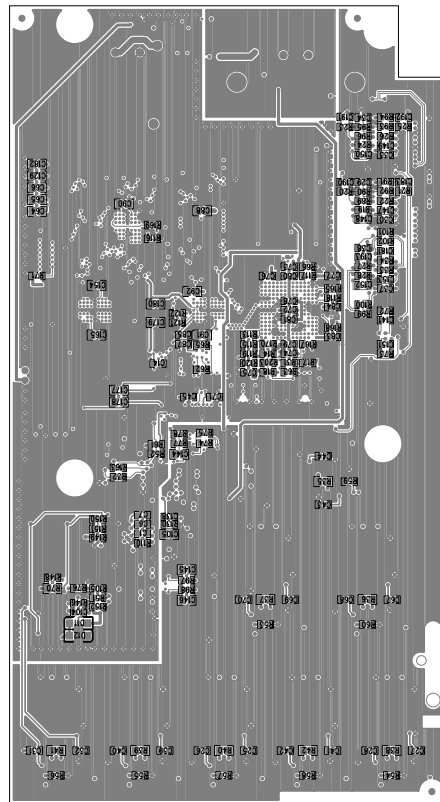
PACKET NUMBER	1	2	3	4	5	6	7	8	9	10
0	1	1	1	1	1	1	1	1	1	1



U33 DSP  
FX-SERIES: 70418612  
S-32 MIXER: 70418510

Decoupling Caps  
(Please use U17)





BILL OF MATERIAL REPORT

-----

REPORT DATE/TIME: 3/22/2005 11:21:57 AM

BOARD NAME: FX Effects ASSEMBLY LEVEL NUMBER: 99061620

PROJECT NUMBER: P0300087 DESIGNER: JTH

Qty.	Part #	Description	Reference Designators
--			
1	30418608	256KX16 SRAM BGA 10NS	U4
2	70200183	221 1/10W 1% MF 0805	R126 R127
8	70200191	1.65K 1/10W 1% MF 0805	R134 R135 R136 R137 R138 R139 R140 R141
8	70200250	3.48K 1/10W 1% MF 0805	R35 R36 R37 R38 R39 R40 R41 R42
4	70200264	499 1/10W 1% MF 0603	R16 R124 R125 R182
17	70200281	0.0 JUMPER 0.1 0603	R18 R29 R30 R53 R54 R55 R56 R57 R58 R59 R60 R68 R69 R202 R203 R204 R205
3	70200284	1.5K 1/10W 1% MF 0603	R13 R72 R73
2	70200286	10 1/10W 1% MF 0603	R142 R143
8	70200287	100 1/10W 1% MF 0603	R66 R74 R75 R77 R78 R97 R98 R144
3	70200288	100K 1/10W 5% MF 0603	R51 R76 R79
30	70200289	10K 1/10W 1% MF 0603	R3 R14 R15 R64 R67 R71 R89 R90 R91 R92 R93 R94 R95 R96 R99 R100 R101 R102 R105 R109 R110 R113 R116 R117 R118 R119 R120 R121 R122 R123
8	70200291	13.7K 1/10W 1% MF 0603	R193 R194 R195 R196 R197 R198 R199 R200

2	70200294	1K	1/10W	1% MF	0603	R152 R153
7	70200313	47K	1/10W	5% MF	0603	R145 R146 R147 R148 R149 R150 R151
15	70200317	56	1/10W	5% MF	0603	R17 R32 R52 R61 R62 R65 R157 R160 R162 R163 R165 R167 R168 R169 R170
1	70200338	5.62M	1/10W	1% MF	0805	R70
1	70200339	10.0M	1/10W	1% MF	0805	R133
1	70200403	4.70M	1/10W	1% MF	0603	R88
8	70200458	5.49K	1/10W	1% MF	0805	R184 R185 R186 R187 R188 R189 R190 R191
8	70200459	2.94K	1/10W	1% MF	0805	R43 R44 R45 R46 R47 R48 R49 R50
8	70200460	887	1/10W	1% MF	0805	R80 R81 R82 R83 R84 R85 R86 R87
1	70200469	2.49K	1/10W	1% MF	0603	R130
8	70200473	6.19K	1/10W	1% MF	0603	R172 R173 R174 R175 R176 R177 R178 R179
12	70200487	1.30K	1/10W	1% MF	0603	R19 R20 R21 R22 R23 R24 R25 R26 R27 R28 R33 R34
8	70200488	1.87K	1/10W	1% MF	0603	R5 R6 R7 R8 R9 R10 R11 R12
2	70200495	22.1	1/10W	1% MF	0805	R1 R2
1	70250210	0.50A	PTC (RESET)	FUSE	SMT	R4
3	70300079	47UF	35V	20% EL	SMT6	C23 C24 C93
1	70300081	1UF	50V	20% EL	SMT4	C166
2	70300083	100UF	16V	20% EL	SMT6	C94 C95
6	70300084	2.2UF	35V	20% ELN	SMT4	C139 C140 C186 C187 C188 C189

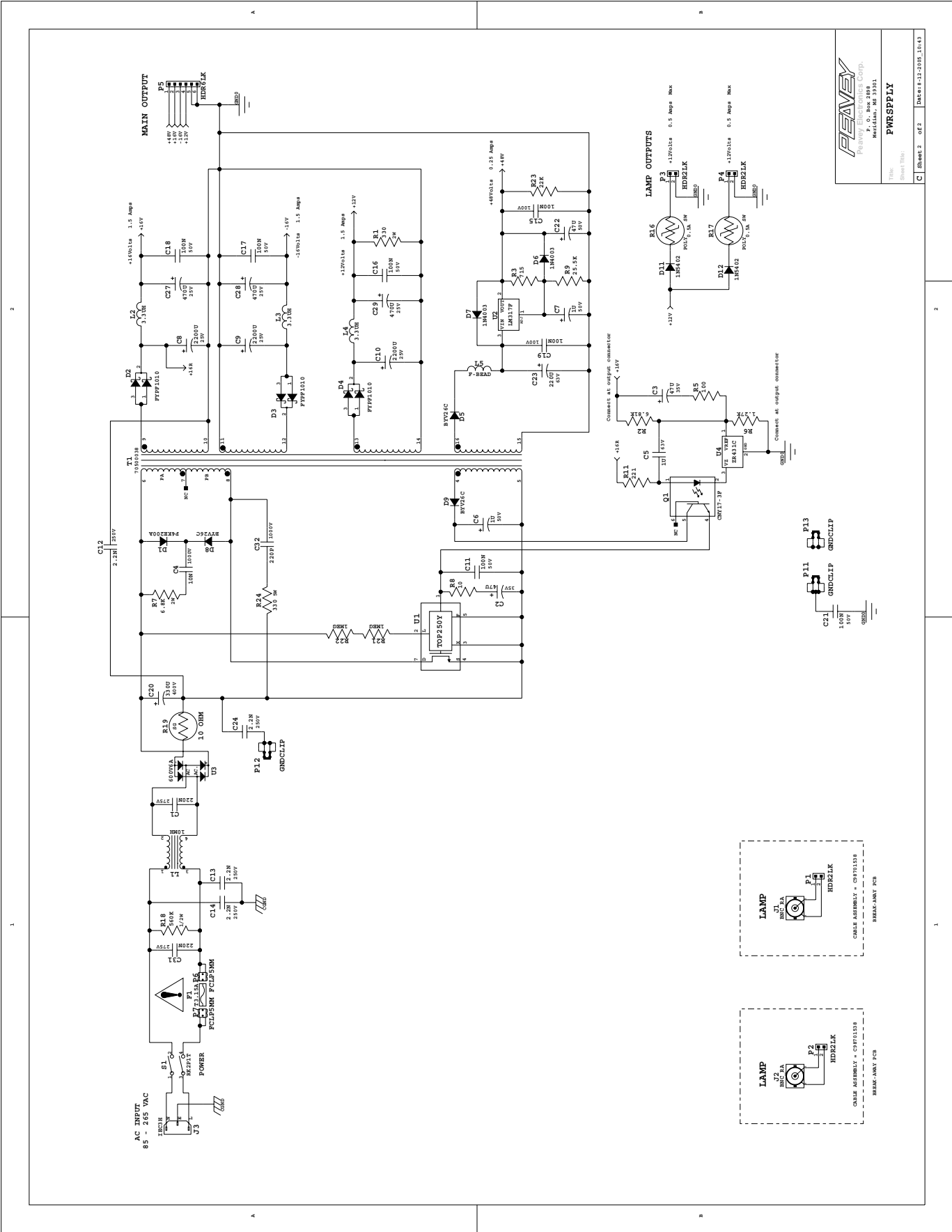
12	70300094	1UF	10V	10%	X7R	0805	C64 C65 C66 C88 C89 C90 C91 C92 C129 C154 C165 C182
1	70300099	22UF	50V	20%	EL	SMT6	C128
15	70300124	0.01UF	50V	+80,20%	Y5V	0603	C1 C2 C3 C4 C5 C6 C7 C8 C9 C10 C11 C12 C13 C71 C87
60	70300128	0.1UF	50V	10%	Y5V	0603	C14 C25 C26 C27 C28 C29 C30 C31 C32 C33 C34 C35 C36 C37 C38 C39 C40 C41 C42 C43 C44 C45 C46 C47 C48 C49 C50 C51 C52 C53 C54 C55 C56 C57 C58 C59 C60 C61 C62 C63 C67 C68 C69 C70 C72 C73 C74 C75 C76 C77 C78 C79 C80 C81 C82 C83 C84 C85 C141 C151
1	70300136	2200PF	50V	10%	X7R	0603	C138
8	70300141	390PF	50V	5%	NPO	0603	C130 C131 C132 C133 C134 C135 C136 C137
4	70300150	22PF	50V	5%	NPO	0805	C177 C178 C179 C180
4	70300152	100UF	16V	20%	EL LOZ	SMT6	C163 C164 C167 C168
1	70300171	0.047UF	50V	5%	X7R	0805	C105
8	70300218	1200PF	100V	5%	NPO	0805	C169 C170 C171 C172 C173 C174 C175 C176
9	70300220	39PF	50V	5%	NPO	0603	C96 C97 C98 C99 C100 C101 C102 C103 C104
4	70300225	2700PF	25V	5%	NPO	0805	C143 C144 C145 C146
14	70300226	10UF	35V	20%	EL	SMT4	C106 C107 C108 C109 C110 C111 C119 C120

					C121 C122 C123 C124 C126 C127
8	70300231	5600PF	50V	5% NPO 1206	C15 C16 C17 C18 C19 C20 C21 C22
12	70300233	820PF	50V	5% NPO 0603	C147 C148 C149 C150 C152 C153 C181 C183 C190 C191 C192 C193
8	70300234	1800PF	50V	5% NPO 0805	C155 C156 C157 C158 C159 C160 C161 C162
18	70300237	22UF	16V	20% EL SMT4	C112 C113 C114 C115 C116 C117 C118 C125 C184 C185 C194 C195 C196 C197 C198 C199 C200 C201
1	70320324	470UF	25V	20% ELS RAD	C142
1	70400316	LM317	ADJ	VR INSUL TO220F	U24
3	70418158	4580	DUAL	LN OPAMP SO8	U1 U2 U3
8	70418198	J108	JFET	N SOT23	Q9 Q10 Q11 Q12 Q13 Q14 Q15 Q16
3	70418219	SCHOTTKY	40V	1A SMT	D3 D4 D7
1	70418220	LM2594M-5.0,	5V	REG SMT	U28
3	70418236	2SA1576A,	PNP		Q4 Q6 Q7
1	70418258	3.3V	UP	RST & WTCHDG -SMT	U29
4	70418328	1N4148W	SWITCHING	DIODE	D1 D2 D11 D12
1	70418465	74LVC74	2-	D FLIP FLOP SMT	U34
1	70418472	74LVC08A-	2IN	AND	U17
1	70418474	DUAL	LED	R/G 0605	D10
1	70418496	LM2594M-3.3,	3.3V	REG SMT	U23
10	70418506	4565	DUAL	OPAMP SOIC8W	U5 U7 U8 U9 U10 U11 U12 U13 U14 U16
1	70418517	NDS8434A	20V	P- MOSFET	U30



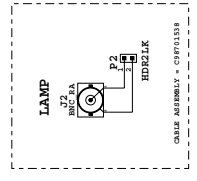
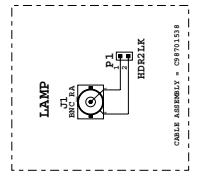
1	70418526	CY7C67200 USB OTG HOST	U22
1	70418543	74ALVC04 HEX- INV TSSOP14	U15
1	70418558	SDRAM 8MX16 -SMT	U27
1	70418584	CS42418 2IN 8OUT CODEC SMT	U25
1	70418586	FLASH 2MX16 3.3V 70NS BOTTOM B	U31
1	70418590	CS5351 24 BIT ST ADC SMT	U32
1	70418592	74LVC138 3-8 DECODER TSSOP16	U18
1	70418612	BF531 MP3 400MHZ BLKFIN DSP	U33
2	70519953	100UH IND 1A SMT	L2 L3
1	70519973	10UH IND 1.3A SMT	L1
1	70800045	CRYSTAL 12MHZ SMT	Y2
1	70810018	CRYSTAL 12.288MHZ SMT	Y1
1	70900629	AAVID VER TO220 HEATSINK	HW1
1	73717252	14 HDR V DR .100" GLD SMT	P2
1	73717270	2 HDR V JST-EHR 2MM TIN	P7
1	73719151	30 FLT FLX 1.0MM CONN SMT	P5
1	73719152	26 FLT FLX.5MM ZIF CONN	P3
1	73719154	8 FLT FLX 1.0MM CONN SMT	P6
1	73719155	12 FLT FLX 1.0MM CONN SMT	P4
14	FIDUCIAL	????????????????????????????????	FID1 FID2 FID3 FID4 FID5 FID6 FID7 FID8 FID9 FID10 FID11 FID12 FID13 FID14
6	TEST_SMT	PAD FOR SMT TEST POINT	TP1 TP2 TP3 TP4 TP5 TP6

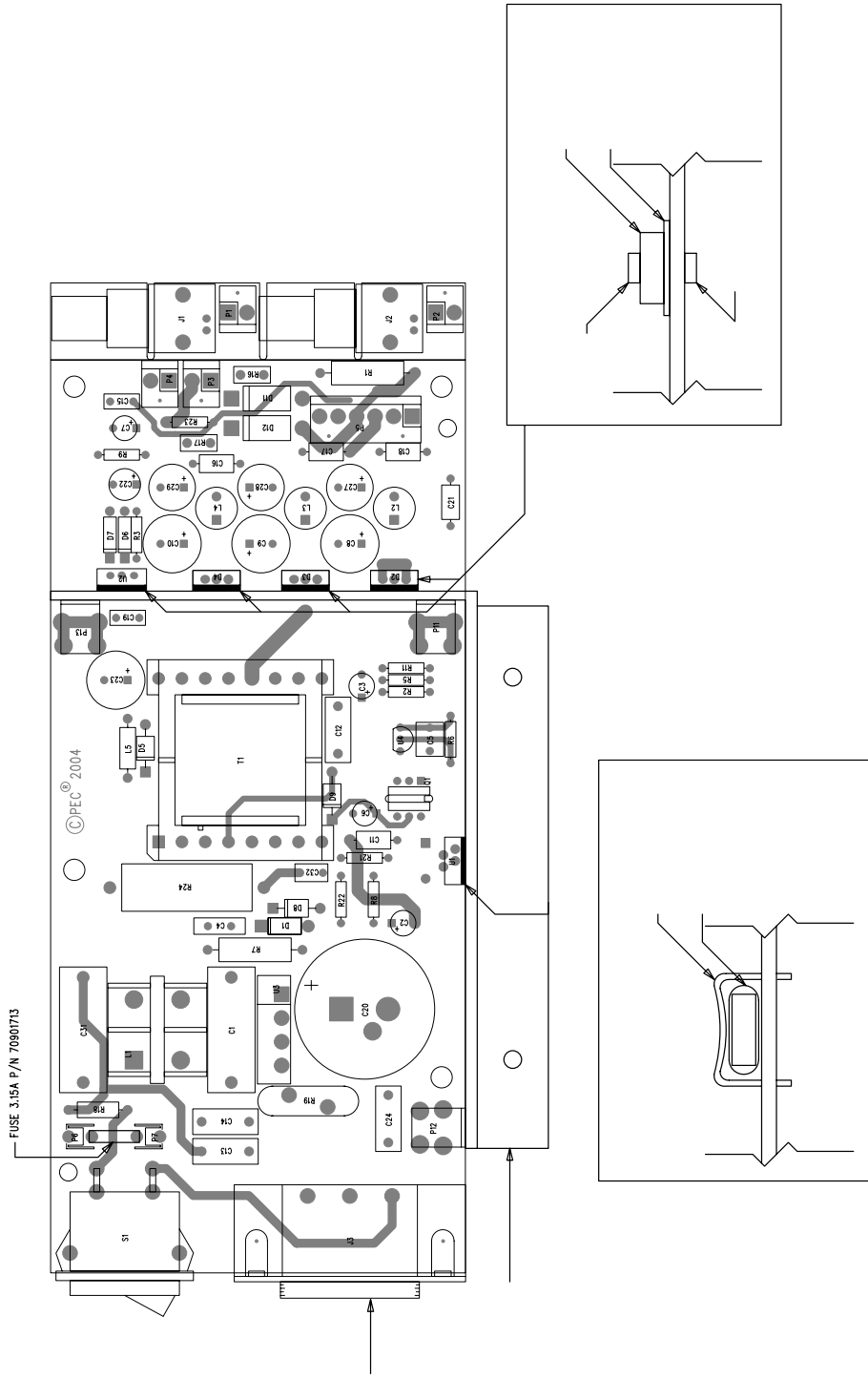
-----  
 END OF BILL OF MATERIAL REPORT  
 -----

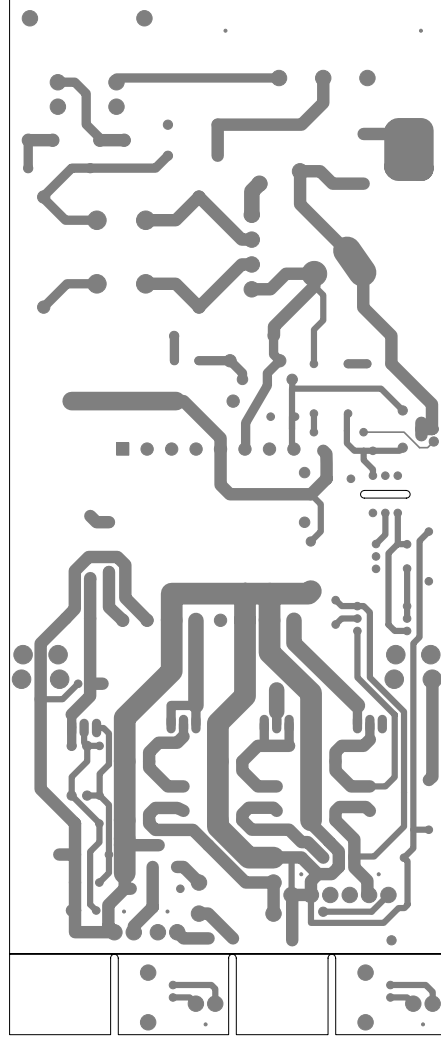



  
 Peavey Electronics Corp.
   
 10000 Highway 101
   
 Dallas, TX 75243
   
**POWERPLY**

Title: \_\_\_\_\_
   
 Sheet No: \_\_\_\_\_
   
**C** Sheet 2 of 2 Date: 11-20-85 10/43







BILL OF MATERIAL REPORT

-----

REPORT DATE/TIME: 8/16/2005 10:43:42 AM

BOARD NAME: SPS 125 ASSEMBLY LEVEL NUMBER: 99061750

PROJECT NUMBER: P0400003 DESIGNER: FJE

Qty.	Part #	Description	Reference Designators
--			
1	30230046	560K 1/2W 5% FP AXL	R18
1	30240003	10 1/4W 5% CF AXL	R8
1	30240010	100 1/4W 5% CF AXL	R5
1	30240029	22K 1/4W 5% CF AXL	R23
1	30240081	221 1/4W 1% MF AXL	R11
1	30240087	715 1/4W 1% MF AXL	R3
1	30240121	25.5K 1/4W 1% MF AXL	R9
1	30240143	1.27K 1/4W 1% MF AXL	R6
1	30241043	6.81K 1/4W 1% MF AXL	R2
2	30241118	1M 1/4W 1% MF AXL	R21 R22
1	30250052	6.8K 2W 5% MO AXL	R7
1	30250074	330 RSS2W 5% MO AXL	R1
2	30250205	P/SWITCH PTC VARISTOR	R16 R17
1	30250229	330 5W 5% MO AXIAL	R24
1	30320182	47UF 50V 20% EL RAD	C22
1	30320248	0.01UF 1000V 80-20% Z5U RAD	C4
2	30320261	1UF 50V 20% EL RAD	C6 C7
1	30320320	220PF 1000V 20% CER RAD	C32
3	30320322	2200PF 250V 20% "Y" RADH	C12 C13 C14
3	30320324	470UF 25V 20% ELS RAD	C27 C28 C29
2	30320327	0.22UF 275V 20% "X" RADH	C1 C31

2	30320344	47UF 35V 20% EL RAD	C2 C3
1	30320559	330UF 400V 20% EL SNPHT3	C20
3	30320565	2200UF 25V 20% EL LOW ESR	C8 C9 C10
1	30320566	220UF 63V 20% EL LOW ESR	C23
2	30330113	0.1UF 100V 10% PPS RAD	C15 C19
1	30330158	1UF 63V 5% PES RAD	C5
4	30340101	0.1UF 50V 10% X7R AXL	C11 C16 C17 C18
3	30400026	1A 600V 35N -DIODE T&R	D5 D8 D9
1	30400173	CNY17-3F BASELESS OPTO	Q1
1	30400200	200V 400W TV -DIODE T&R	D1
1	30400316	LM317 ADJ VR INSUL TO220F	U2
2	30400502	MR502/1N5402 200V 3A DIOD	D11 D12
1	30400605	BR RECT INLINE 600V 6A	U3
3	30401010	FYPF1010DN SCHOTTKY TO220	D2 D3 D4
1	30407431	ZR431C ADJ SHUNT REG. RAD	U4
1	30424327	TOP250Y OFF-LINE SWITCHER	U1
2	30464003	1N4003 200V 1A SI DIODE	D6 D7
3	30519989	OUTPUT CHOKE (SLUG CORE)	L2 L3 L4
3	30901785	SCREW TERM, 6-32 -PCB MT	P11 P12 P13
1	70240200	10 OHM 3A INRUSH LIMITER	R19
1	70500038	100W FLYBACK XFMR	T1
1	70502122	FERRITE BEAD	L5
1	70519985	COMMON MODE CHOKE	L1
1	70901428	PWR INLET, RA SCREW MT PC RA GND	J3
2	70901714	5X20MM FUSE CLIP T&A	P6 P7
1	71322377	SWITCH 2P1T ROCKER PC H	S1
2	73714900	BNC CONN GOLD RA PCB MNT	J1 J2
4	73719107	2 HDR V SR .156" TIN LK	P1 P2 P3 P4

1 73719130

6 HDR V SR .156" TIN LK

P5

-----  
END OF BILL OF MATERIAL REPORT  
-----