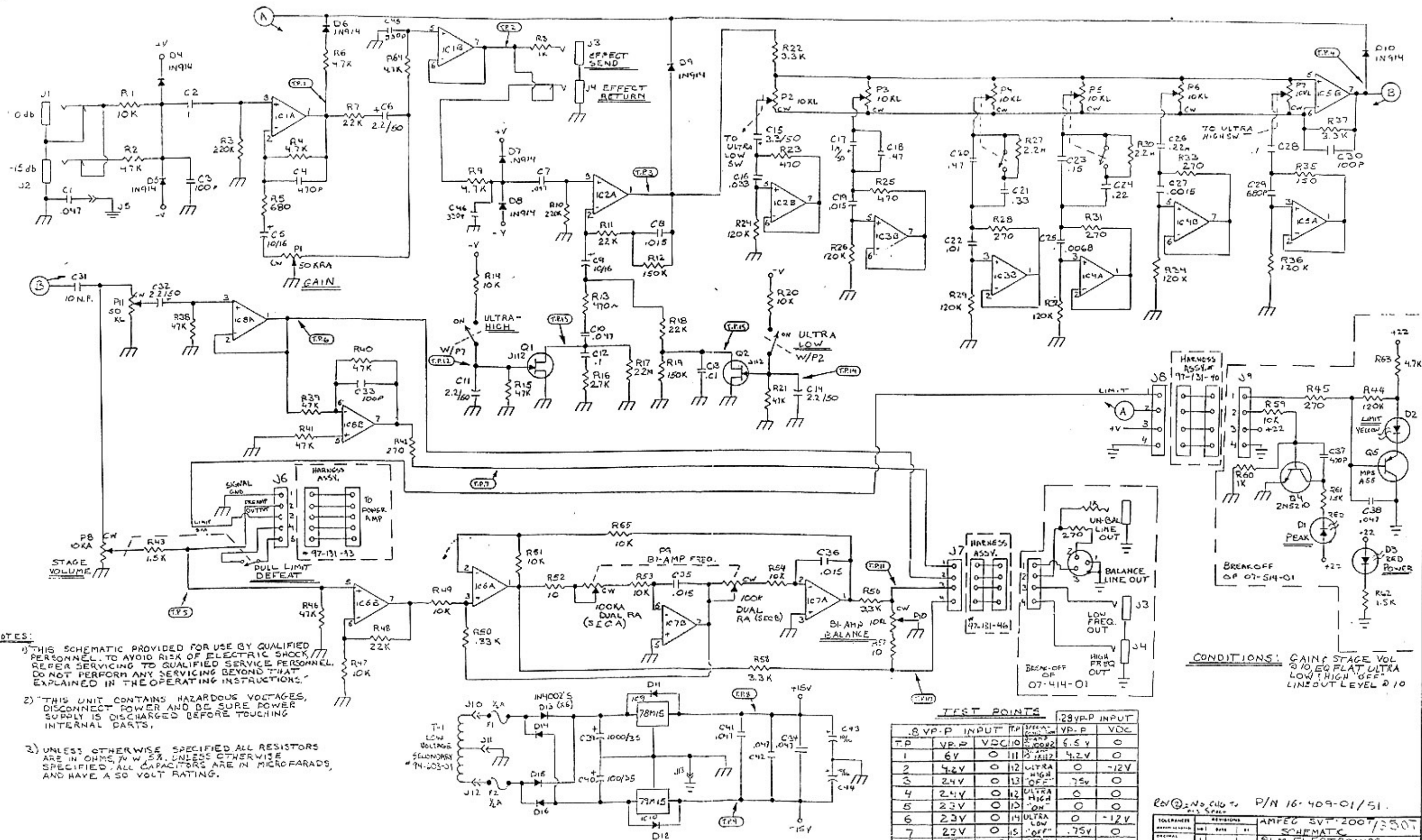


"SVT-200T PREAMP" PC BOARD ASSY # 07-510-01



NOTES:

- 1) THIS SCHEMATIC PROVIDED FOR USE BY QUALIFIED PERSONNEL TO AVOID RISK OF ELECTRIC SHOCK. REFER SERVICING TO QUALIFIED SERVICE PERSONNEL. DO NOT PERFORM ANY SERVICING BEYOND THAT EXPLAINED IN THE OPERATING INSTRUCTIONS.
- 2) "THIS UNIT CONTAINS HAZARDOUS VOLTAGES, DISCONNECT POWER AND BE SURE POWER SUPPLY IS DISCHARGED BEFORE TOUCHING INTERNAL PARTS,
- 3) UNLESS OTHERWISE SPECIFIED ALL RESISTORS ARE IN OHMS, μ W 5%, UNLESS OTHERWISE SPECIFIED. ALL CAPACITORS ARE IN MICROFARADS, AND HAVE A 50 VOLT RATING.

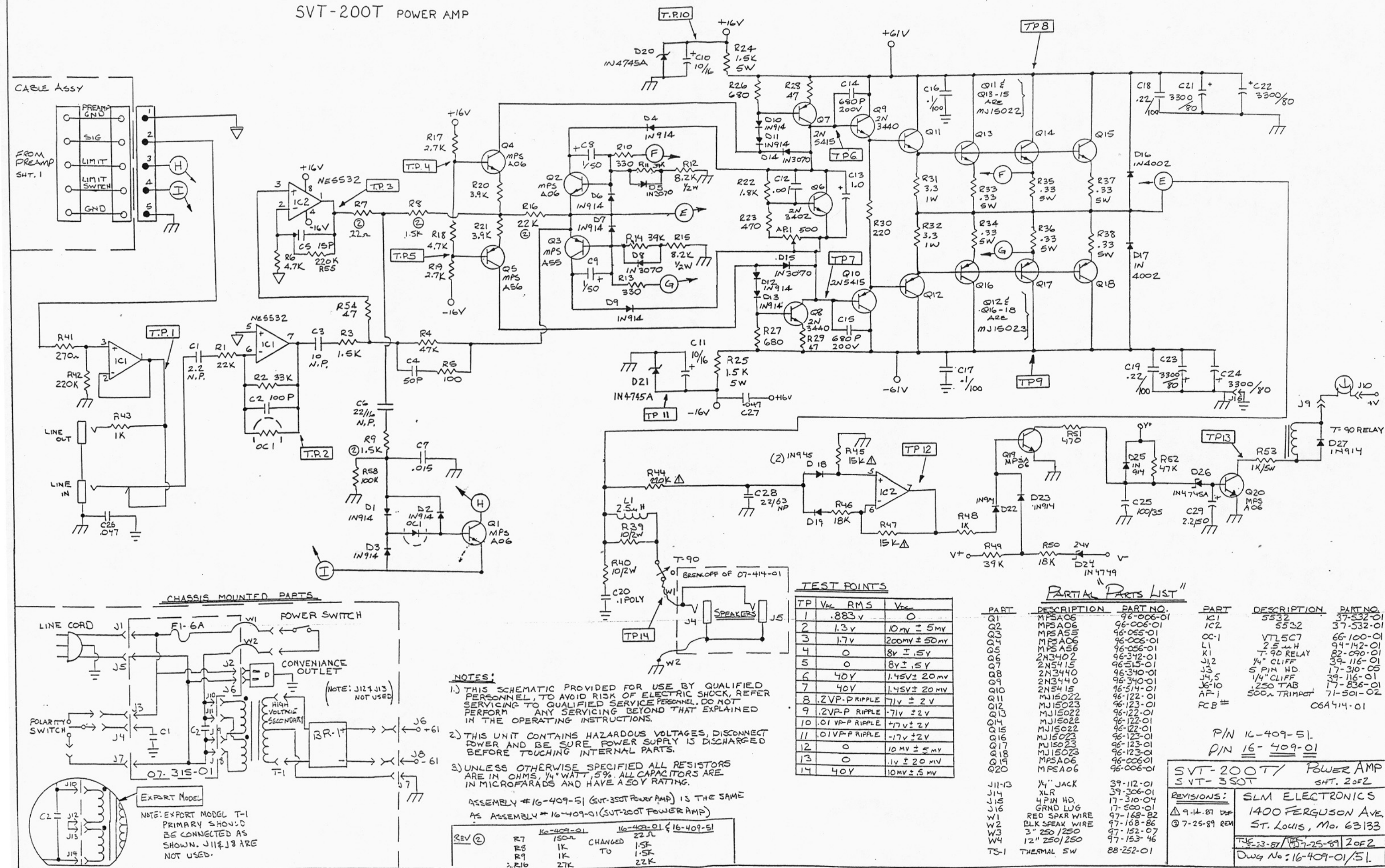
CONDITIONS: GAIN STAGE VOL
210, EQ FLAT ULTRA
LOW, HIGH "OFF"
LINE OUT LEVEL 210

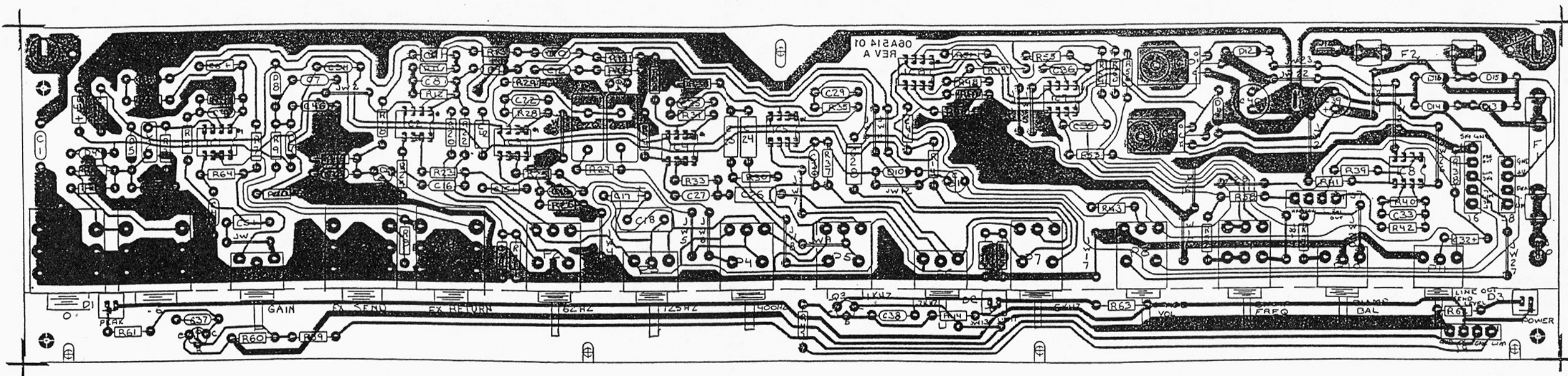
TEST POINTS					29VBP INPUT	
.8 VP-P INPUT			TP	OFF-ON	VP-P	VDC
TP	VP-P	VDC	10	OFF	6.5 V	0
1	6V	0	11	ON	4.2V	0
2	4.2V	0	12	ULTRA HIGH	0	-12V
3	2.4V	0	13	"OFF"	.75V	0
4	2.4V	0	12	ULTRA HIGH	0	0
5	2.3V	0	13	"ON"	0	0
6	2.3V	0	14	ULTRA LOW	0	-12V
7	2.3V	0	15	"OFF"	.75V	0
8	0	+15	14	ULTRA LOW	0	0
9	0	+15	15	"ON"	0	0

REV @ 2 NO. 446 to P/N 16-409-01/51.

TOLERANCES		REVISIONS		AMPEX SVT-2007/3507	
MATERIALS		NO.	DATE	SCHEMATIC	
1		1		SLM ELECTRONICS	
2		2	75-398	UREO FORMAN STUDIO MO 52146	
3	FRACTIONAL	3		SCALE	
4		4		OPTIONAL	
5	ANGULAR	5		DATE	
6		6		16-409-01/51	

SVT-200T POWER AMP

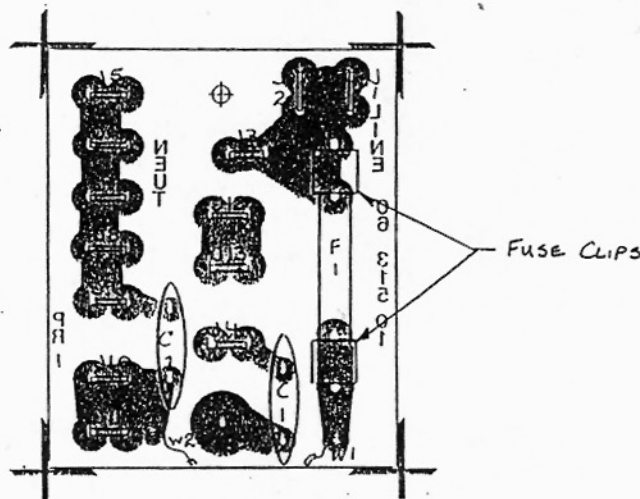




PCB# 06A514-01

NOTE: UNLESS OTHERWISE SPECIFIED ALL RESISTORS ARE IN OHMS, 1/4 WATT, 5%. ALL CAPACITORS ARE IN MICROFARADS AND HAVE A 50 VOLT RATING.

TOLERANCES	REVISIONS	AMPEG SVT-350T
EXCEPT AS NOTED	NO. DATE BY	SVT-200T PREAMP
DECIMAL	1	SLM ELECTRONICS
FRACTIONAL	2	11880 BORMAN ST. LOUIS MO. 63146
ANGULAR	3	DATE 4-24-87
	4	SCALE 2X
	5	TRACED
	6	DRAWING NO. 07-514-01



PART	DESCRIPTION	PART NO.
C1, C2	.0027 U.L.	10-272-01
J3, 4, 7	.187 TAB	17-874-01
J1, 2, 5, 6, 7-13	.250 TAB	17-836-01
W1, 2	4'SNG, 1/250 BMT	97-152-14
2 FUSE CLIPS		23-926-01
Δ F1.	6L. 60W BATTAGE	23-307-01
	PC. BMRD	06-315-01

TOLERANCES		REVISIONS		AC TERMINATION 3D	
DECIMAL	FRACTIONAL	NO	DATE	BY	FOR SVT-800T, SS-HOC
1	1	1	7-14-81	USE	SLM ELECTRONICS
2	2	2			11880 BORMAN ST. LOUIS MO 63146
3	3	3			DATE 5-28-87
4	4	4			SCALE 2X
5	5	5			TRACED
6	6	6			DRAWING NO. 07P315-01