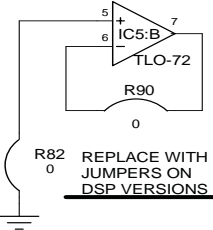


TP	CONDITION "A"	CONDITION "B"	CONDITION "C"
1		.48Vpp	.48Vpp
2		18Vpp	5.2Vpp
3		7.2Vpp	6.2Vpp
4		5Vpp	.18Vpp
5		9.8Vpp	8Vpp
6		3.3Vpp	3.2Vpp
7		9.8Vpp	5Vpp
8		4.8Vpp	2.5Vpp
9*		30Vpp	30Vpp

- Note Table
- 1 CONDITION "A" : SOLO CHANNEL  
GAIN & LEVEL @ '10', SHAPE @ '5'.  
1kHz 130mv SINE WAVE INPUT
- 2 CONDITION "B" : OVERDRIVE CHANNEL  
GAIN& LEVEL @ '10', LOW, MID & HIGH @ '5'.  
1kHz 130mv SINE WAVE INPUT
- 3 CONDITION "C" : CLEAN CHANNEL  
VOLUME @10,LOW, MID, HIGH @ 5.  
1kHz 130mv SINE WAVE INPUT
- \* FOR TEST POINT 9, PUT A 150 OHM  
RESISTOR FROM J6 TO J7.

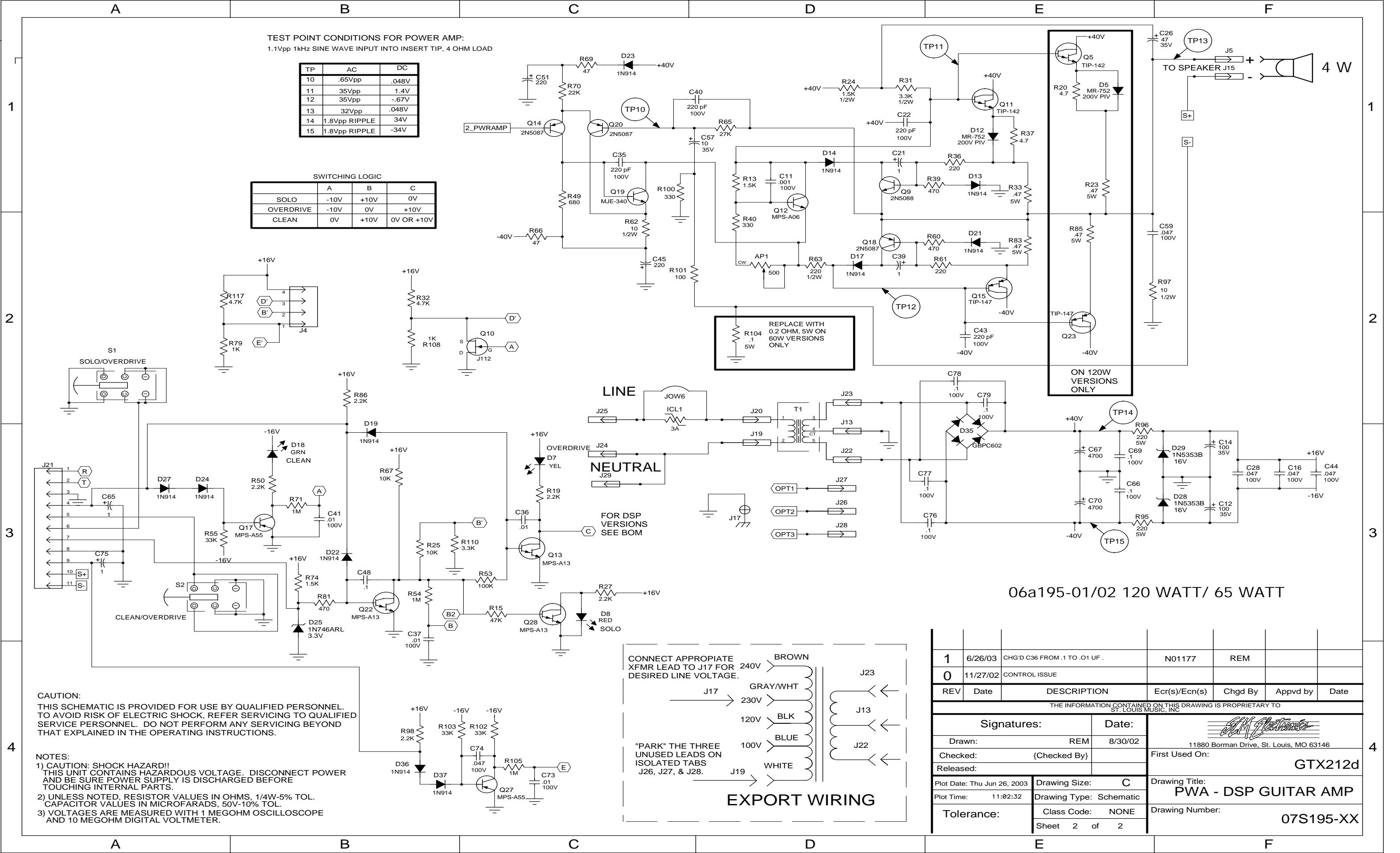


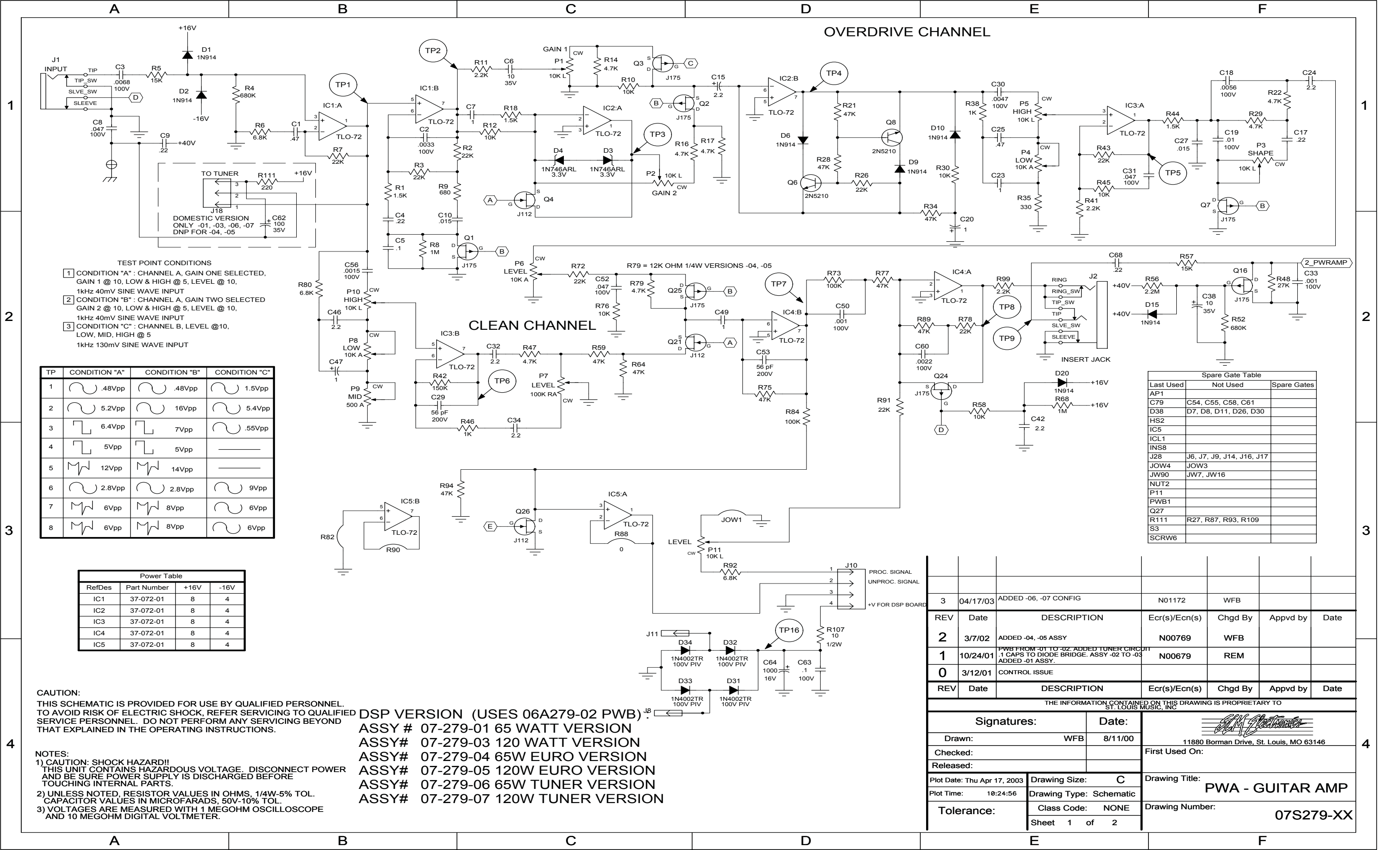
CAUTION:  
THIS SCHEMATIC IS PROVIDED FOR USE BY QUALIFIED PERSONNEL.  
TO AVOID RISK OF ELECTRIC SHOCK, REFER SERVICING TO QUALIFIED  
SERVICE PERSONNEL. DO NOT PERFORM ANY SERVICING BEYOND  
THAT EXPLAINED IN THE OPERATING INSTRUCTIONS.

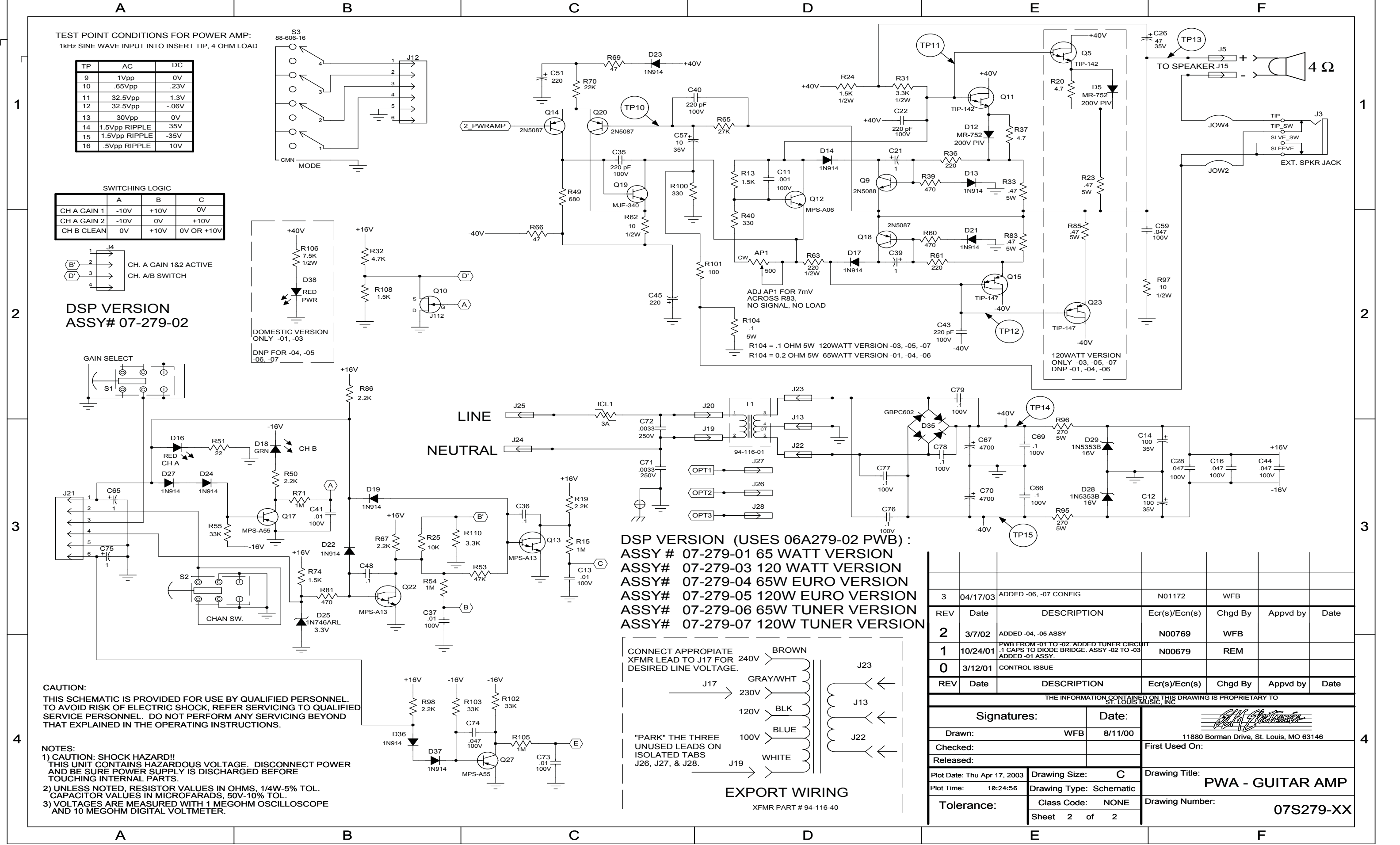
- NOTES:
- 1) CAUTION: SHOCK HAZARD!!  
THIS UNIT CONTAINS HAZARDOUS VOLTAGE. DISCONNECT POWER  
AND BE SURE POWER SUPPLY IS DISCHARGED BEFORE  
TOUCHING INTERNAL PARTS.
- 2) UNLESS NOTED, RESISTOR VALUES IN OHMS, 1/4W-5% TOL.  
CAPACITOR VALUES IN MICROFARADS, 50V-10% TOL.
- 3) VOLTAGES ARE MEASURED WITH 1 MEGOHM OSCILLOSCOPE  
AND 10 MEGOHM DIGITAL VOLTMETER.

Power Table			
RefDes	-15V	+15V	
IC1	4	8	
IC2	4	8	
IC3	4	8	
IC4	4	8	
IC5	4	8	

1	6/26/03	CHG'D C36 FROM .1 TO .01 UF.	N01177	REM		
0	11/27/02	CONTROL ISSUE				
REV	Date	DESCRIPTION	Ecr(s)/Ecn(s)	Chgd By	Appvd by	Date
THE INFORMATION CONTAINED ON THIS DRAWING IS PROPRIETARY TO ST. LOUIS MUSIC, INC.						
Signatures:		Date:				
Drawn:		REM		8/30/02		
Checked:				First Used On:		
Released:				GTX212d		
Plot Date: Thu Jun 26, 2003		Drawing Size: C		Drawing Title:		
Plot Time: 11:02:32		Drawing Type: Schematic		PWA - DSP GUITAR AMP		
Tolerance:		Class Code: NONE		Drawing Number:		
		Sheet 1 of 2		07S195-XX		







DSP VERSION (USES 06A279-02 PWB) :  
ASSY # 07-279-01 65 WATT VERSION  
ASSY# 07-279-03 120 WATT VERSION  
ASSY# 07-279-04 65W EURO VERSION  
ASSY# 07-279-05 120W EURO VERSION  
ASSY# 07-279-06 65W TUNER VERSION  
ASSY# 07-279-07 120W TUNER VERSION

3	04/17/03	ADDED -.06, -.07 CONFIG	N01172	WFB		
REV	Date	DESCRIPTION	Ecr(s)/Ecn(s)	Chgd By	Appvd by	Date
2	3/7/02	ADDED -.04, -.05 ASSY	N00769	WFB		
1	10/24/01	PWB FROM -.01 TO -.02, ADDED TUNER CIRCUIT .1 CAPS TO DIODE BRIDGE. ASSY -.02 TO -.03 ADDED -.01 ASSY.	N00679	REM		
0	3/12/01	CONTROL ISSUE				
REV	Date	DESCRIPTION	Ecr(s)/Ecn(s)	Chgd By	Appvd by	Date

THE INFORMATION CONTAINED ON THIS DRAWING IS PROPRIETARY TO ST. LOUIS MUSIC, INC.						
Signatures:		Date:				
Drawn: WFB		8/11/00				
Checked:				First Used On:		
Released:						
Plot Date: Thu Apr 17, 2003		Drawing Size: C		Drawing Title:		
Plot Time: 10:24:56		Drawing Type: Schematic		PWA - GUITAR AMP		
Tolerance:		Class Code: NONE		Drawing Number:		
		Sheet 2 of 2		07S279-XX		