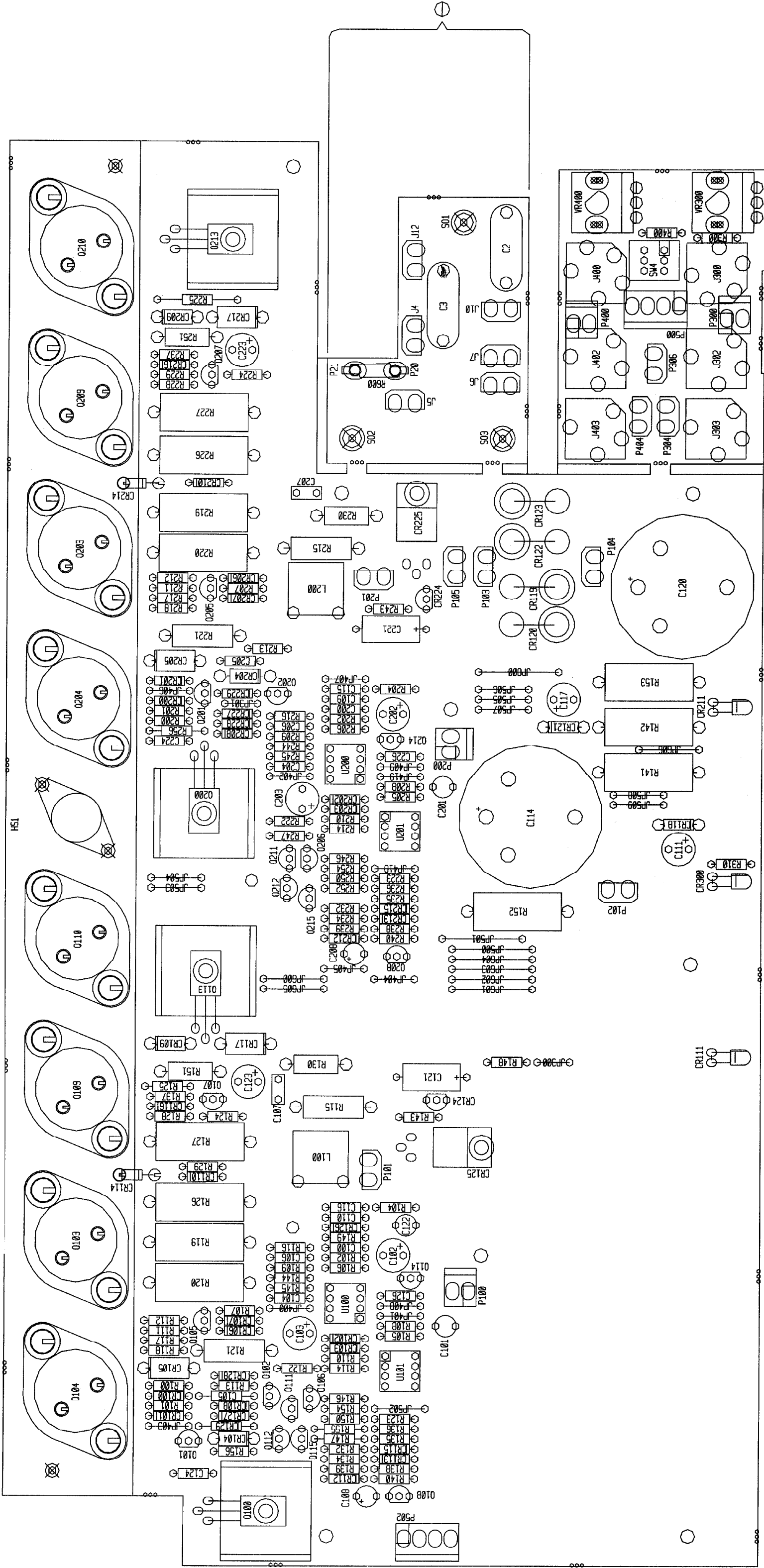


NZO

COMPANY REPRESENTATIVE INFORMATION		CORP	
PENNEY ELECTRONICS		711 A STREET	
MASSACHUSETTS		39301	
P12 AC DRIVE BOARD		REV	
DATE		#91501609	
SHEET		1 OF 2	



PV 2.6C DRIVE

⊖ For EXPORT: do NOT insert the following parts
 J5, J4, R600, P20, P21, J7, C3, C2, J6, J10, S01, S02, S03 & J12

BOARD NAME:	PART	VALUE	DESCRIPTION AND	MR812	70404933	CR201, CR202, CR203	70466531	6531	MPS-6531 TO92 NPN TRANS. T&A
* QTY.	NAME	NUMBER	DEVICE DESIGNATIONS *****	MR502	70400502	CR204	70464249	4249	2N4249/690 30V TO-92 PNP T&A
*****	*****	*****	*****	4148	70464148	CR205	70466533	6534	Q206
2	.01DVLNLP	.01DVLNLP	.01 MFD 125VDC DVL MYLAR +0-20% C2, C3	1	70404933	CR209	70460013	AL3	MPS-6533/34 TO-92 PNP TRANS T&A
1	10PF	10PF	10PF-5%-----T/C-T&R	1	70464148	CR210	70473100	73100	MPS-A13 NPN DARLINGTON TRANS T&A
1	2.2R50NP	2.2R50NP	2.2MFD-20%-50VDC-NP-T&A	1	70464148	CR211	70466531	6531	SJ-73100, 3 AMP, 100V, METRIC TO-3, PNP TRANS
2	47V50	47V50	47MF-20%-50VDC-LL-T&A	1	70464148	CR212	70466531	6531	Q209, Q210
2	39PF	39PF	39PF-10%-50VDC-T/C-T&R	1	70464148	CR213	70405332	5332	MPS-6531 TO92 NPN TRANS. T&A
1	10PF	10PF	10PF-5%-----T/C-T&R	1	70464148	CR214	70460174	J174	Q211, Q212
1	.15F	.15F	0.10 MFD 10% 100V STCK FILM T&A	2	70464148	CR215	704664249	4249	J-174 30V TO-92 P-CHAN PET T&A
1	10K50L	10K50L	10MF-20%-50VDC-LL-T&A	1	70464148	CR216	704664249	4249	Q215
2	.1	.1	.1MF-80-20%-50VDC-AXL-T&R	1	70464148	CR217	70240004	33	2N4249/690 30V TO-92 PNP T&A
1	47V50	47V50	47MF-20%-50VDC-LL-T&A	1	70464148	CR218	70240017	1K	33-1/4W-5%-CF-T&R
1	4700V80	4700V80	4700MF - 20% - 80VDC - EL - R/S	1	70464148	CR219	70241068	48.7KP1	1K-1/4W-5%-CF-T&R
2	.1	.1	.1MF-80-20%-50VDC-AXL-T&R	1	70464148	CR220	70240017	1K	48.7K-1/4W-1%-MF-T&R
1	47V50	47V50	47MF-20%-50VDC-LL-T&A	3	70464148	CR221	70240017	1K	1K-1/4W-5%-CF-T&R
1	4700V80	4700V80	4700MF - 20% - 80VDC - EL - R/S	1	70464148	CR222	70240030	33K	33K-1/4W-5%-CF-T&R
1	2.2A50NP	2.2A50NP	2.2MFD 20% 50V NP EL T&R	1	70464148	CR223	70240092	2.1KP1	2.1K 1% 1/4W MF T&R
1	2.2R50NP	2.2R50NP	2.2MFD-20%-50VDC-NP-T&A	1	70464148	CR224	70240092	2.1KP1	10-1/4W-5%-CF-T&R
1	47V50	47V50	47MF-20%-50VDC-LL-T&A	1	70464148	CR225	70240092	10K	22K-1/4W-5%-CF-T&R
1	100PF	100PF	100PF-10%-50VDC-T/C-T&R	1	70464148	CR226	70240092	1.5K	10K-1/4W-5%-CF-T&R
1	27PF	27PF	27PF-10%-50VDC-T/C-T&R	2	70464148	CR227	70240018	330	1.5K-1/4W-5%-CF-T&R
1	10PF	10PF	10PF-5%-----T/C-T&R	1	70464148	CR228	70240018	330	330-1/4W-5%-CF-T&R
1	.15F	.15F	0.10 MFD 10% 100V STCK FILM T&A	16	J	CR229	70240009	68	68-1/4W-5%-CF-T&R
1	10K50L	10K50L	10MF-20%-50VDC-LL-T&A	2	3UH	CR230	70240009	68	48.7K-1/4W-1%-MF-T&R
1	2.2R50NP	2.2R50NP	2.2MFD-20%-50VDC-NP-T&A	2	MMP	CR231	70240015	47W1	47-1W-5%-MO-T&R
2	47V50	47V50	47MF-20%-50VDC-LL-T&A	1	SPX2	CR232	70250003	33W5	33-5W-10%-WF-AXL
2	39PF	39PF	39PF-10%-50VDC-T/C-T&R	1	SPX2	CR233	70250003	33W5	.33-5W-10%-WF-AXL
1	100PF	100PF	100PF-10%-50VDC-T/C-T&R	5	SPD	CR234	70250003	33W5	R119, R120
1	27PF	27PF	27PF-10%-50VDC-T/C-T&R	1	SPD	CR235	70250003	33W5	4700-1W-5%-MO-T&R
1	.15F	.15F	0.10 MFD 10% 100V STCK FILM T&A	1	SPD	CR236	70250003	33W5	R121
1	10K50L	10K50L	10MF-20%-50VDC-LL-T&A	1	SPX2	CR237	70250003	33W5	R122
1	2.2A50NP	2.2A50NP	2.2MFD 20% 50V NP EL T&R	2	SPD	CR238	70250003	33W5	68K-1/4W-5%-CF-T&R
1	47V50	47V50	47MF-20%-50VDC-LL-T&A	1	SPD	CR239	70250003	33W5	470-1/4W-5%-CF-T&R
2	39PF	39PF	39PF-10%-50VDC-T/C-T&R	1	SPX2	CR240	70250003	33W5	100FP-1/4W-5%-FP-T&R
2	39PF	39PF	39PF-10%-50VDC-T/C-T&R	1	SPX2	CR241	70250003	33W5	R118
1	100PF	100PF	100PF-10%-50VDC-T/C-T&R	1	SPD	CR242	70250003	33W5	R119, R120
1	.15F	.15F	0.10 MFD 10% 100V STCK FILM T&A	1	SPD	CR243	70250003	33W5	4700-1W-5%-MO-T&R
1	10K50L	10K50L	10MF-20%-50VDC-LL-T&A	1	SPD	CR244	70250003	33W5	R121
1	2.2A50NP	2.2A50NP	2.2MFD 20% 50V NP EL T&R	1	SPX2	CR245	70250003	33W5	R122
1	47V50	47V50	47MF-20%-50VDC-LL-T&A	2	SPD	CR246	70250003	33W5	68K-1/4W-5%-CF-T&R
2	39PF	39PF	39PF-10%-50VDC-T/C-T&R	1	SPD	CR247	70250003	33W5	470-1/4W-5%-CF-T&R
1	100PF	100PF	100PF-10%-50VDC-T/C-T&R	1	SPX2	CR248	70250003	33W5	100FP-1/4W-5%-FP-T&R
1	27PF	27PF	27PF-10%-50VDC-T/C-T&R	1	SPD	CR249	70250003	33W5	R123
1	.15F	.15F	0.10 MFD 10% 100V STCK FILM T&A	1	SPD	CR250	70250003	33W5	R124
1	10K50L	10K50L	10MF-20%-50VDC-LL-T&A	1	SPD	CR251	70250003	33W5	100FP-1/4W-5%-FP-T&R
1	2.2A50NP	2.2A50NP	2.2MFD 20% 50V NP EL T&R	2	SPD	CR252	70250003	33W5	R125
1	47V50	47V50	47MF-20%-50VDC-LL-T&A	2	SPX4	CR253	70250003	33W5	.33-5W-10%-WF-AXL
2	39PF	39PF	39PF-10%-50VDC-T/C-T&R	2	SPX4	CR254	70250003	33W5	R126, R127
1	100PF	100PF	100PF-10%-50VDC-T/C-T&R	1	SPX4	CR255	70250003	33W5	1.5K-1/4W-5%-CF-T&R
1	27PF	27PF	27PF-10%-50VDC-T/C-T&R	1	SPX4	CR256	70250003	33W5	R128, R129
1	.15F	.15F	0.10 MFD 10% 100V STCK FILM T&A	1	SPX4	CR257	70250003	33W5	22-1W-5%-MO-T&R
1	10K50L	10K50L	10MF-20%-50VDC-LL-T&A	1	SPD	CR258	70250003	33W5	R130
1	2.2A50NP	2.2A50NP	2.2MFD 20% 50V NP EL T&R	1	SPD	CR259	70250003	33W5	1K-1/4W-5%-CF-T&R
1	47V50	47V50	47MF-20%-50VDC-LL-T&A	2	SPD	CR260	70250003	33W5	R132
2	39PF	39PF	39PF-10%-50VDC-T/C-T&R	2	SPX4	CR261	70250003	33W5	47K-1/4W-5%-CF-T&R
1	100PF	100PF	100PF-10%-50VDC-T/C-T&R	1	SPX4	CR262	70250003	33W5	R134, R135
1	27PF	27PF	27PF-10%-50VDC-T/C-T&R	1	SPX4	CR263	70250003	33W5	68K-1/4W-5%-CF-T&R
1	.15F	.15F	0.10 MFD 10% 100V STCK FILM T&A	1	SPX4	CR264	70250003	33W5	R136
1	10K50L	10K50L	10MF-20%-50VDC-LL-T&A	1	SPD	CR265	70250003	33W5	3.9K-1/4W-5%-CF-AXL
1	2.2A50NP	2.2A50NP	2.2MFD 20% 50V NP EL T&R	1	SPD	CR266	70250003	33W5	R137
1	47V50	47V50	47MF-20%-50VDC-LL-T&A	1	SPD	CR267	70250003	33W5	10K-1/4W-5%-CF-T&R
2	39PF	39PF	39PF-10%-50VDC-T/C-T&R	1	SPD	CR268	70250003	33W5	82K-1/4W-5%-CF-T&R
1	100PF	100PF	100PF-10%-50VDC-T/C-T&R	1	SPD	CR269	70250003	33W5	R139
1	27PF	27PF	27PF-10%-50VDC-T/C-T&R	1	SPD	CR270	70250003	33W5	2.7K-1/4W-5%-CF-T&R
1	.15F	.15F	0.10 MFD 10% 100V STCK FILM T&A	2	SPD	CR271	70250003	33W5	R140
1	10K50L	10K50L	10MF-20%-50VDC-LL-T&A	1	SPD	CR272	70250003	33W5	700-5W-10%-WF-AXL
1	2.2A50NP	2.2A50NP	2.2MFD 20% 50V NP EL T&R	2	SPD	CR273	70250003	33W5	R141, R142
1	47V50	47V50	47MF-20%-50VDC-LL-T&A	1	SPD	CR274	70250003	33W5	47K-1/4W-5%-CF-T&R
2	39PF	39PF	39PF-10%-50VDC-T/C-T&R	1	SPD	CR275	70250003	33W5	R143
1	100PF	100PF	100PF-10%-50VDC-T/C-T&R	1	SPD	CR276	70250003	33W5	820-1/4W-5%-CF-T&R
1	27PF	27PF	27PF-10%-50VDC-T/C-T&R	1	SPD	CR277	70250003	33W5	R144, R145
1	.15F	.15F	0.10 MFD 10% 100V STCK FILM T&A	1	SPD	CR278	70250003	33W5	390-1/4W-5%-CF-T&R
1	10K50L	10K50L	10MF-20%-50VDC-LL-T&A	1	SPD	CR279	70250003	33W5	R146, R147
1	2.2A50NP	2.2A50NP	2.2MFD 20% 50V NP EL T&R	1	SPD	CR280	70250003	33W5	4.7-1/4W-5%-CF-T&R
1	47V50	47V50	47MF-20%-50VDC-LL-T&A	1	SPD	CR281	70250003	33W5	1M-1/4W-5%-CF-T&R
2	39PF	39PF	39PF-10%-50VDC-T/C-T&R	1	SPD	CR282	70250003	33W5	R148
1	100PF	100PF	100PF-10%-50VDC-T/C-T&R	1	SPD	CR283	70250003	33W5	8.2K-1/4W-5%-CF-T&R
1	27PF	27PF	27PF-10%-50VDC-T/C-T&R	1	SPD	CR284	70250003	33W5	R149
1	.15F	.15F	0.10 MFD 10% 100V STCK FILM T&A	1	SPD	CR285	70250003	33W5	1.5K-1W-5%-MO-T&R
1	10K50L	10K50L	10MF-20%-50VDC-LL-T&A	2	SPD	CR286	70250003	33W5	R150
1	2.2A50NP	2.2A50NP	2.2MFD 20% 50V NP EL T&R	1	SPD	CR287	70250003	33W5	1.5K-1W-5%-MO-T&R
1	47V50	47V50	47MF-20%-50VDC-LL-T&A	2	SPD	CR288	70250003	33W5	R151
2	39PF	39PF	39PF-10%-50VDC-T/C-T&R	1	SPD	CR289	70250003	33W5	

2 2K5 70250063 2K-5W-10%-W-AXL
 R152, R153
 2 160 70240012 180-1/4W-5%-CF-T&R
 R154, R155
 1 47K 70240031 47K-1/4W-5%-CF-T&R
 R156
 1 33 70240004 33-1/4W-5%-CF-T&R
 R200
 1 1K 70240017 1K-1/4W-5%-CF-T&R
 R201
 1 48.7KP1 70241068 48.7K-1/4W-1%-MF-T&R
 R202
 1 1K 70240017 1K-1/4W-5%-CF-T&R
 R204
 1 33K 70240030 33K-1/4W-5%-CF-T&R
 R205
 1 2.1KP1 70240092 2.1K 1% 1/4W MF T&R
 R206
 1 10 70240003 10-1/4W-5%-CF-T&R
 R207
 1 22K 70240029 22K-1/4W-5%-CF-T&R
 R208
 1 2.1KP1 70240092 2.1K 1% 1/4W MF T&R
 R209
 1 10K 70240025 10K-1/4W-5%-CF-T&R
 R210
 2 1.5K 70240018 1.5K-1/4W-5%-CF-T&R
 R211, R212
 1 330 70240014 330-1/4W-5%-CF-T&R
 R213
 1 68 70240009 68-1/4W-5%-CF-T&R
 R214
 1 47M1 70210011 47-1W-5%-MO-T&R
 R215
 1 48.7KP1 70241068 48.7K-1/4W-1%-MF-T&R
 R216
 1 470 70240015 470-1/4W-5%-CF-T&R
 R217
 1 100FP 70240096 100FP-1/4W-5%-SF-T&R
 R218
 2 .33W5 70250003 .33-5W-10%-W-AXL
 R219, R220
 1 4.7KW1 70210006 4700-1W-5%-MO-T&R
 R221
 1 150 70240001 150-1/4W-5%-CF-T&R
 R222
 1 68K 70240032 68K-1/4W-5%-CF-T&R
 R223
 1 470 70240015 470-1/4W-5%-CF-T&R
 R224
 1 100FP 70240096 100FP-1/4W-5%-SF-T&R
 R225
 2 .33W5 70250003 .33-5W-10%-W-AXL
 R226, R227
 2 1.5K 70240018 1.5K-1/4W-5%-CF-T&R
 R228, R229
 1 22W1 70210001 22-1W-5%-MO-T&R
 R230
 1 1K 70240017 1K-1/4W-5%-CF-T&R
 R232
 2 47K 70240031 47K-1/4W-5%-CF-T&R
 R234, R235
 1 68K 70240032 68K-1/4W-5%-CF-T&R
 R236
 1 3.9K 70241093 3.9K-1/4W-5%-CF-AXL
 R237
 1 10K 70240025 10K-1/4W-5%-CF-T&R
 R238
 1 82K 70240033 82K-1/4W-5%-CF-T&R
 R239
 1 2.7K 70240021 2.7K-1/4W-5%-CF-T&R
 R240
 1 47K 70240031 47K-1/4W-5%-CF-T&R
 R243
 2 820 70240019 820-1/4W-5%-CF-T&R
 R244, R245
 2 390 70240060 390-1/4W-5%-CF-T&R
 R246, R247
 1 8.2K 70240049 8.2K-1/4W-5%-CF-T&R
 R250
 1 1.5KW1 70210007 1.5K-1W-5%-MO-T&R
 R251
 2 180 70240012 180-1/4W-5%-CF-T&R
 R252, R254
 1 47K 70240031 47K-1/4W-5%-CF-T&R
 R256
 1 1K 70240017 1K-1/4W-5%-CF-T&R
 R300
 1 1.5K 70240018 1.5K-1/4W-5%-CF-T&R
 R310
 1 1K 70240017 1K-1/4W-5%-CF-T&R
 R400
 1 CL30 70240202 INRUSH CURRENT LIMITER
 R600
 3 250STW 70901856 8PCR, 1/4, R(#4), .187 SW, AL
 S01, S02, S03
 1 SU2PP SU2PP SUZ P/P SWITCH PC MOUNT
 SW4
 1 4560 70414560 4560 DUAL OP AMP IC
 U100

PEAVEY ELECTRONICS CORP. 211 A STREET MERIDIAN, MISSISSIPPI 39001		TITLE PVZ 6C DRIVE BD.	
SIZE R 9932362	CORE NUMBER #81501609	DATE 20-JUL-95	SHEET 2 OF 2
REV A	PRINT	NOTE: THIS IS A BASE SCHEMATIC FOR TWO ASSEMBLIES OF BASE BOARD # 9882361. SEE BOARD LAYOUTS FOR ASSEMBLY DIFFERENCES.	

NOTICE: THIS CIRCUITRY IS PROTECTED BY U.S. PATENT NO. 4,318,983 OWNED BY PEAVEY ELECTRONICS CORP. USE OR COPYING WITHOUT EXPRESS WRITTEN AUTHORITY FROM PEAVEY IS STRICTLY FORBIDDEN AND VIOLATORS WILL BE PROSECUTED TO THE FULLEST EXTENT ALLOWED UNDER U.S. PATENT LAWS.

