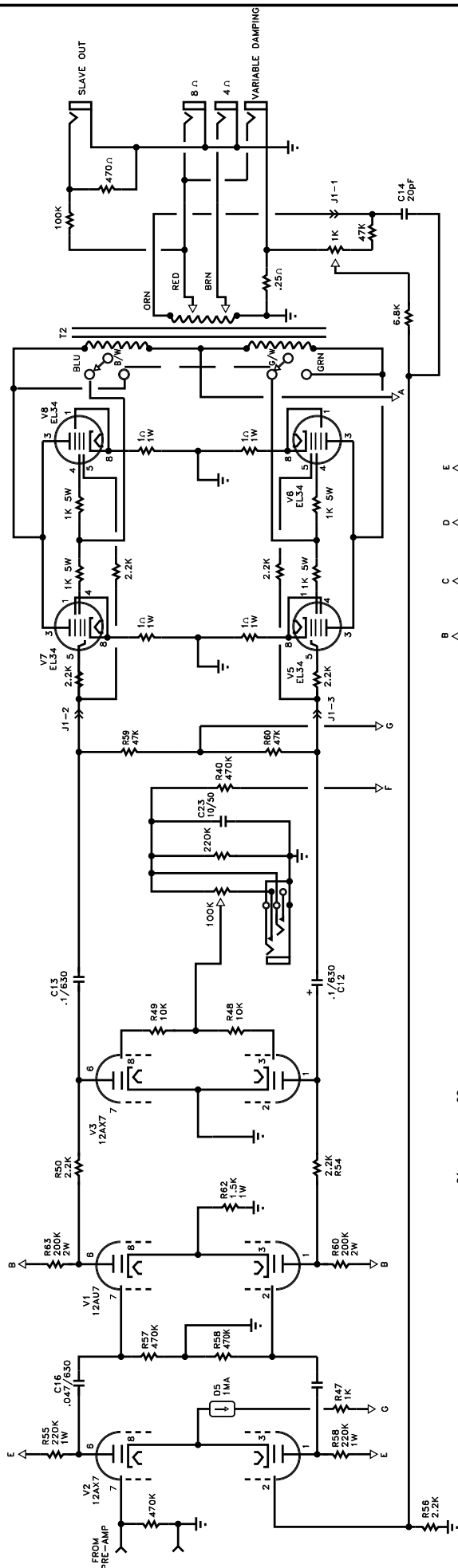


ALL POT-CUSES CONNECTED TO PCB GROUND
ALL RESISTORS 1/2 W AND 5% UNLESS OTHERWISE NOTED
NOTES: UNLESS OTHERWISE SPECIFIED

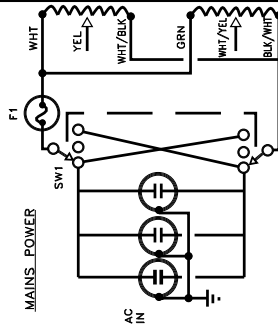
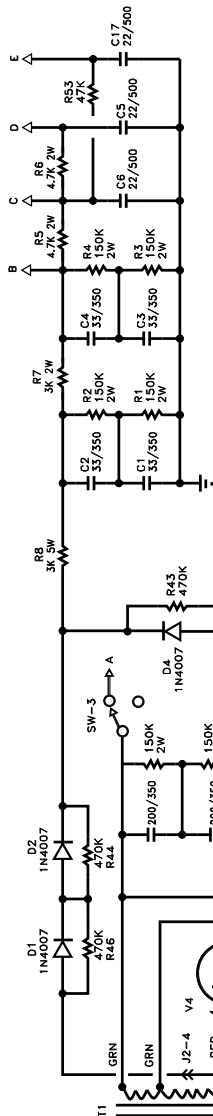
100W CONVERTIBLE
PRE-AMP

SEYMOUR DUNCAN

REV D
DRAWING NUMBER 240004
REV A
DATE 8-28-97



LOC.	VOLTAGES
A	575V
B	450V
C	400V
D	360V
E	300V
F	-110V
G	-60V
H	10.6V



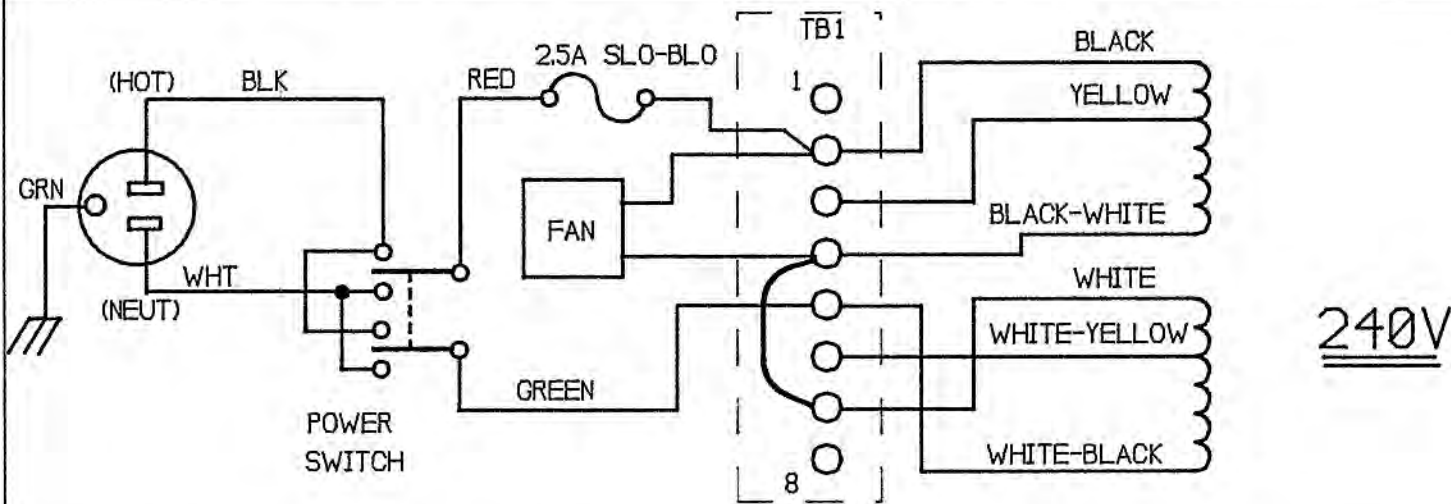
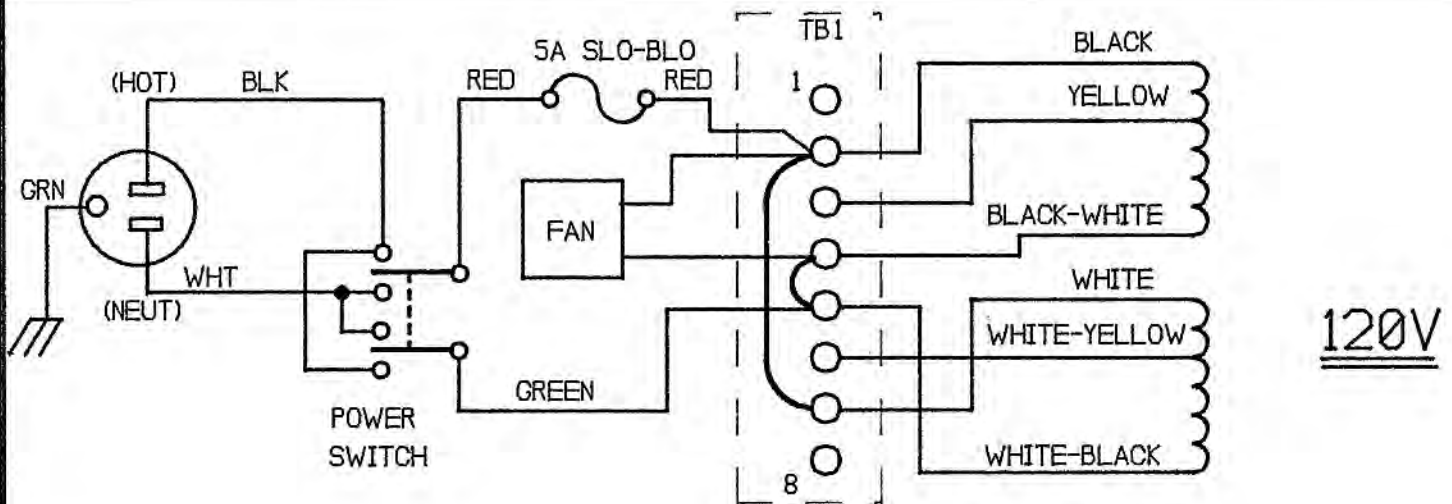
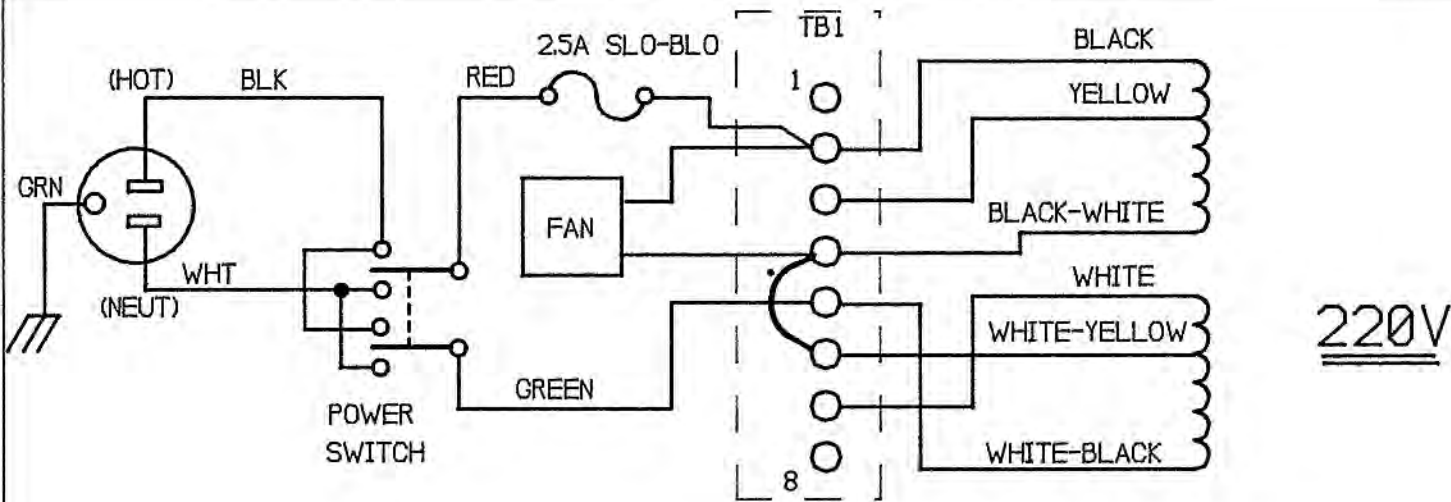
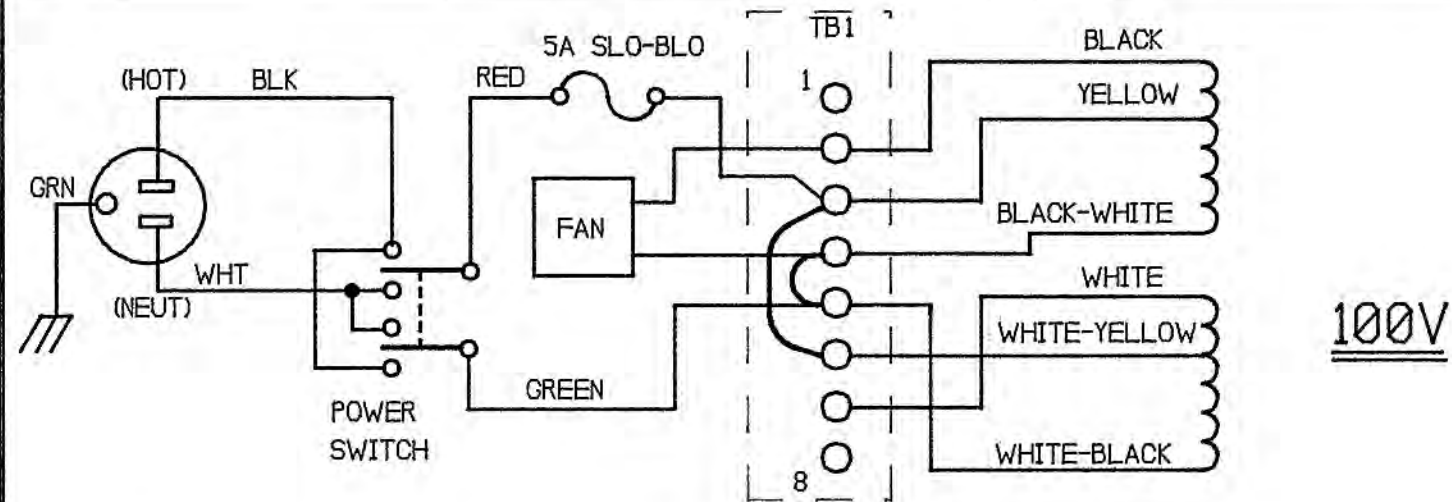
100W CONVERTIBLE
POWER AMP

SEYMOUR DUNCAN

SIZE	D	REV	A
DRAWING NUMBER	240004-SCM	SCALE	SHEET 2 OF 7

NOTES: UNLESS OTHERWISE SPECIFIED

REVISIONS			
REV	DESCRIPTION	DATE	APPR



NOTES: UNLESS OTHERWISE SPECIFIED

INTERPRET DRAWING PER ANSI Y14
DIMENSIONS ARE IN INCHES AND APPLY AFTER PLATING
BREAK SHARP EDGES

DWN	J F PARSONS	DATE	03/30/93
CHECK			
PROJ ENGR	KEVIN BELLER	3/30/93	
APPR			
NEXT ASSY		USED ON	
THIS DOCUMENT CONTAINS PROPRIETARY INFORMATION. IT MAY NOT BE REPRODUCED OR TRANSFERRED TO OTHER DOCUMENTS OR DISCLOSED TO OTHERS USED FOR MANUFACTURING OR ANY OTHER PURPOSE WITHOUT PRIOR WRITTEN PERMISSION.			

SEYMOUR DUNCAN RESEARCH

POWER TRANSFORMER PRIMARY
CONN'S. 100W CONVERTIBLE

POST DOCUMENTATION FOR ORIGINAL MODEL

SIZE		DRAWING NUMBER	REV
B		240005-XXX	99
SCALE	1X	SHEET	OF