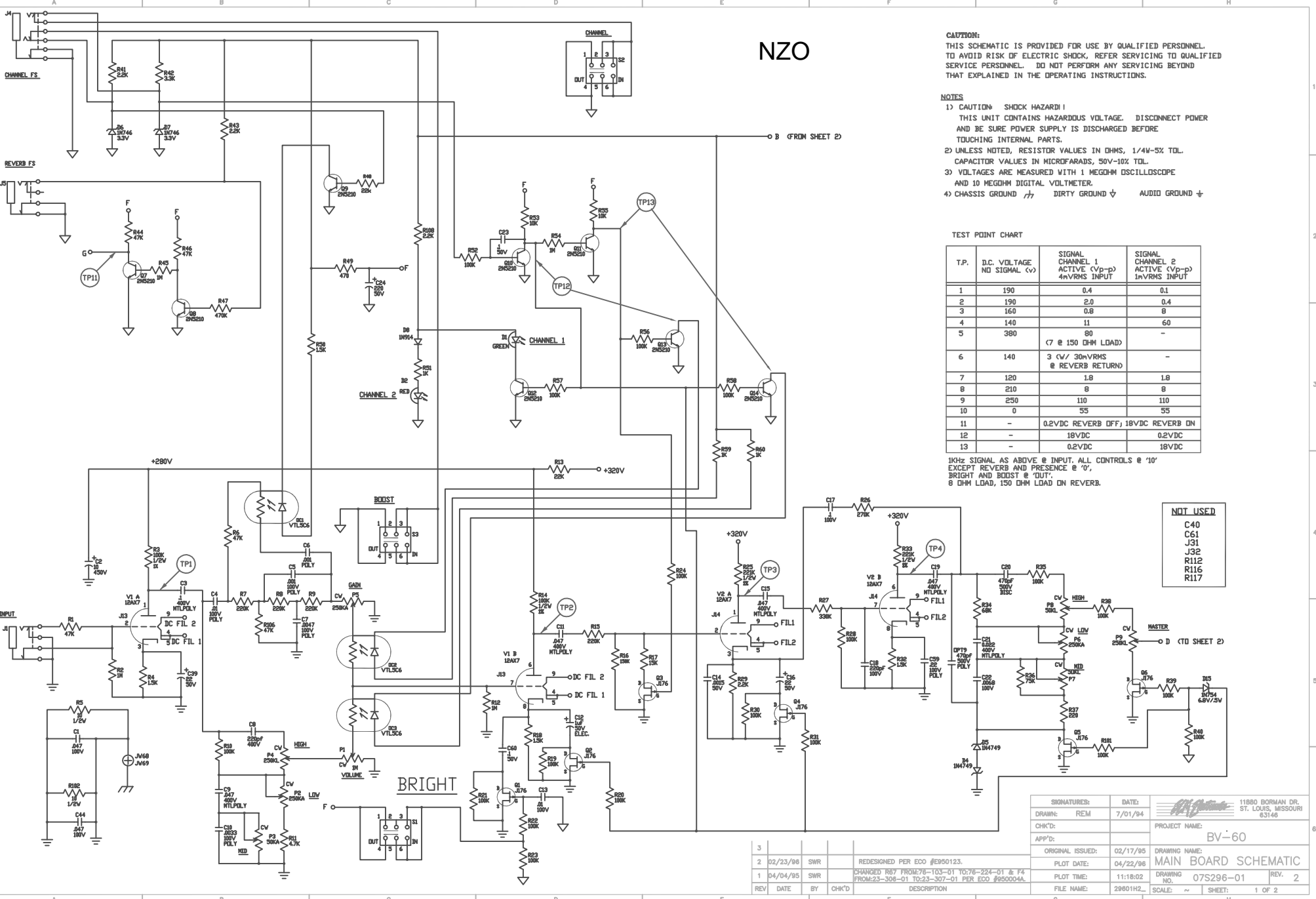


NZO



CAUTION:
THIS SCHEMATIC IS PROVIDED FOR USE BY QUALIFIED PERSONNEL TO AVOID RISK OF ELECTRIC SHOCK. REFER SERVICING TO QUALIFIED SERVICE PERSONNEL. DO NOT PERFORM ANY SERVICING BEYOND THAT EXPLAINED IN THE OPERATING INSTRUCTIONS.

NOTES

- 1) CAUTION SHOCK HAZARD!
THIS UNIT CONTAINS HAZARDOUS VOLTAGE. DISCONNECT POWER AND BE SURE POWER SUPPLY IS DISCHARGED BEFORE TOUCHING INTERNAL PARTS.
- 2) UNLESS NOTED, RESISTOR VALUES IN OHMS, 1/4W-5% TOL. CAPACITOR VALUES IN MICROFARADS, 50V-10% TOL.
- 3) VOLTAGES ARE MEASURED WITH 1 MEGOHM OSCILLOSCOPE AND 10 MEGOHM DIGITAL VOLTMETER.
- 4) CHASSIS GROUND /// DIRTY GROUND ∇ AUDIO GROUND ∇

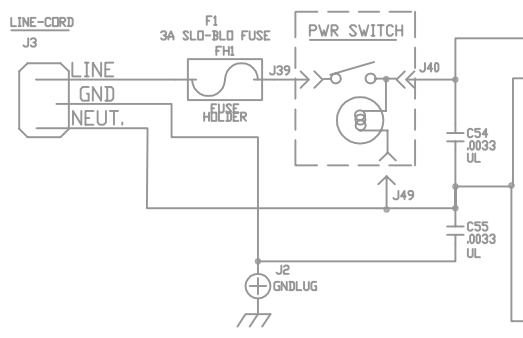
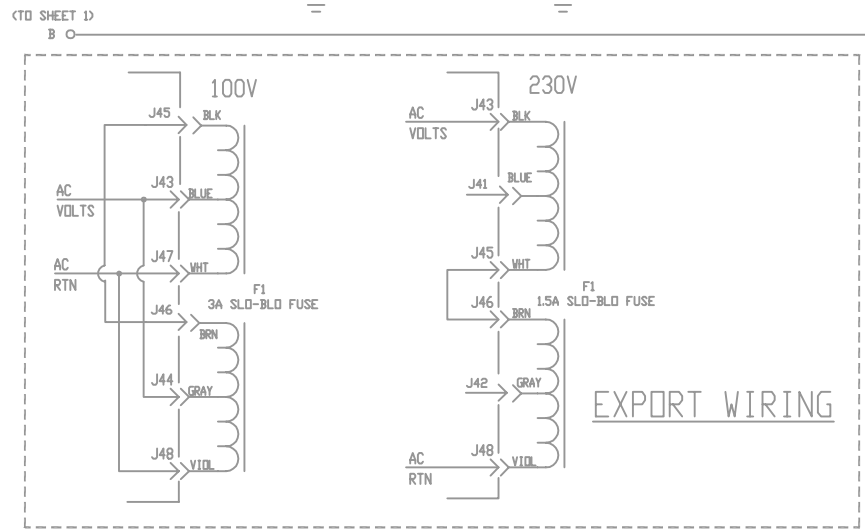
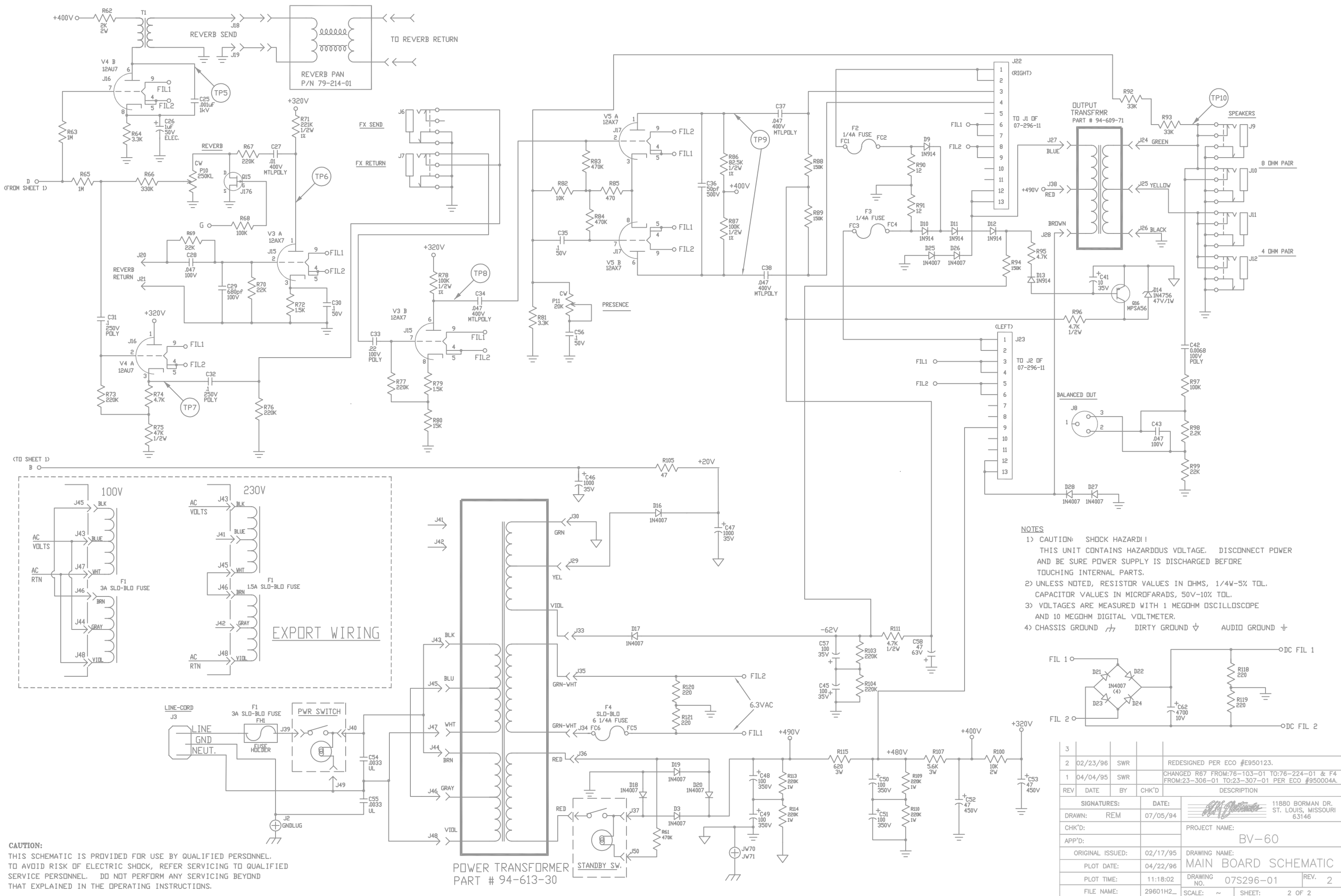
TEST POINT CHART

T.P.	D.C. VOLTAGE NO SIGNAL (v)	SIGNAL CHANNEL 1 ACTIVE (Vp-p) 4mVRMS INPUT	SIGNAL CHANNEL 2 ACTIVE (Vp-p) INVRMS INPUT
1	190	0.4	0.1
2	190	2.0	0.4
3	160	0.8	8
4	140	11	60
5	380	80	-
6	140	3 (V/ 30mVRMS @ REVERB RETURN)	-
7	120	1.8	1.8
8	210	8	8
9	250	110	110
10	0	55	55
11	-	0.2VDC REVERB OFF; 18VDC REVERB ON	-
12	-	18VDC	0.2VDC
13	-	0.2VDC	18VDC

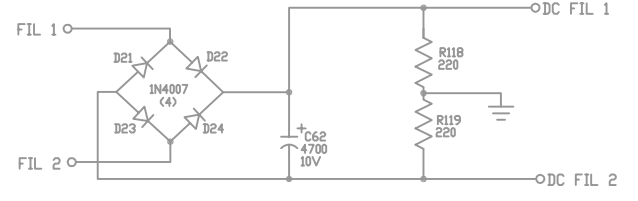
1KHz SIGNAL AS ABOVE @ INPUT. ALL CONTROLS @ '10' EXCEPT REVERB AND PRESENCE @ '0', BRIGHT AND BOOST @ 'OUT', 8 OHM LOAD, 150 OHM LOAD ON REVERB.

NOT USED
C40
C61
J31
J32
R112
R116
R117

SIGNATURES:		DATE:	11880 BORMAN DR. ST. LOUIS, MISSOURI 63146
DRAWN: REM	7/01/94	PROJECT NAME: BV-60	
CHK'D:		ORIGINAL ISSUED: 02/17/95	DRAWING NAME: MAIN BOARD SCHEMATIC
APP'D:		PLOT DATE: 04/22/96	DRAWING NO. 07S296-01
REV	DATE	BY	CHK'D
3	02/23/96	SWR	REDESIGNED PER ECO #E950123.
2	04/04/95	SWR	CHANGED R67 FROM 76-103-01 TO 76-224-01 & F4 FROM 23-308-01 TO 23-307-01 PER ECO #950004A.
1	04/04/95	SWR	
FILE NAME:	29801H2	PLOT TIME:	11:18:02
SCALE:	~	SHEET:	1 OF 2



- NOTES**
- 1) CAUTION: SHOCK HAZARD!! THIS UNIT CONTAINS HAZARDOUS VOLTAGE. DISCONNECT POWER AND BE SURE POWER SUPPLY IS DISCHARGED BEFORE TOUCHING INTERNAL PARTS.
 - 2) UNLESS NOTED, RESISTOR VALUES IN OHMS, 1/4W-5% TOL. CAPACITOR VALUES IN MICROFARADS, 50V-10% TOL.
 - 3) VOLTAGES ARE MEASURED WITH 1 MEGOHM OSCILLOSCOPE AND 10 MEGOHM DIGITAL VOLTMETER.
 - 4) CHASSIS GROUND ∇ DIRTY GROUND ∇ AUDIO GROUND ∇



3					
2	02/23/96	SWR			REDESIGNED PER ECO #E950123.
1	04/04/95	SWR			CHANGED R67 FROM:76-103-01 TO:76-224-01 & F4 FROM:23-306-01 TO:23-307-01 PER ECO #950004A.
REV	DATE	BY	CHK'D	DESCRIPTION	
SIGNATURES:		DATE:		11880 BORMAN DR. ST. LOUIS, MISSOURI 63146	
DRAWN:	REM	07/05/94		PROJECT NAME: BV-60	
CHK'D:					
APP'D:					
ORIGINAL ISSUED:	02/17/95	DRAWING NAME: MAIN BOARD SCHEMATIC			
PLOT DATE:	04/22/96	DRAWING NO. 07S296-01		REV. 2	
PLOT TIME:	11:18:02	SCALE: ~		SHEET: 2 OF 2	
FILE NAME:	29601H2				

CAUTION:
THIS SCHEMATIC IS PROVIDED FOR USE BY QUALIFIED PERSONNEL. TO AVOID RISK OF ELECTRIC SHOCK, REFER SERVICING TO QUALIFIED SERVICE PERSONNEL. DO NOT PERFORM ANY SERVICING BEYOND THAT EXPLAINED IN THE OPERATING INSTRUCTIONS.