

REV	Eng	Date:	Revision Description	ECN#
A				
B				
C				
D				
E				
F				

INDEX

SHEET	DESCRIPTION

A

A

B

B

Note: All thru hole Resistors are 1/4 Watt unless otherwise indicated.
 All SMT 1206 Resistors are 1/4 Watt.
 All SMT 0805 Resistors are 1/10 Watt.
 Note Capacitor Values are indicated as Follows:
 val P = pF (picoFarads) val * 10 exp-12
 val N = nF (nanoFarads) val * 10 exp-9 (1N=1000pF, 100N=0.1uF)
 val U = uF (microFarads) val * 10 exp-6

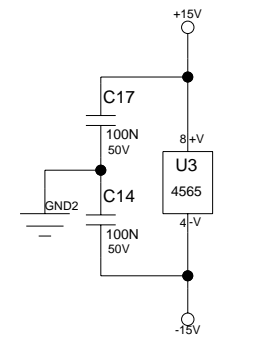
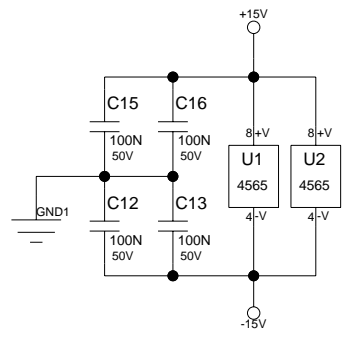
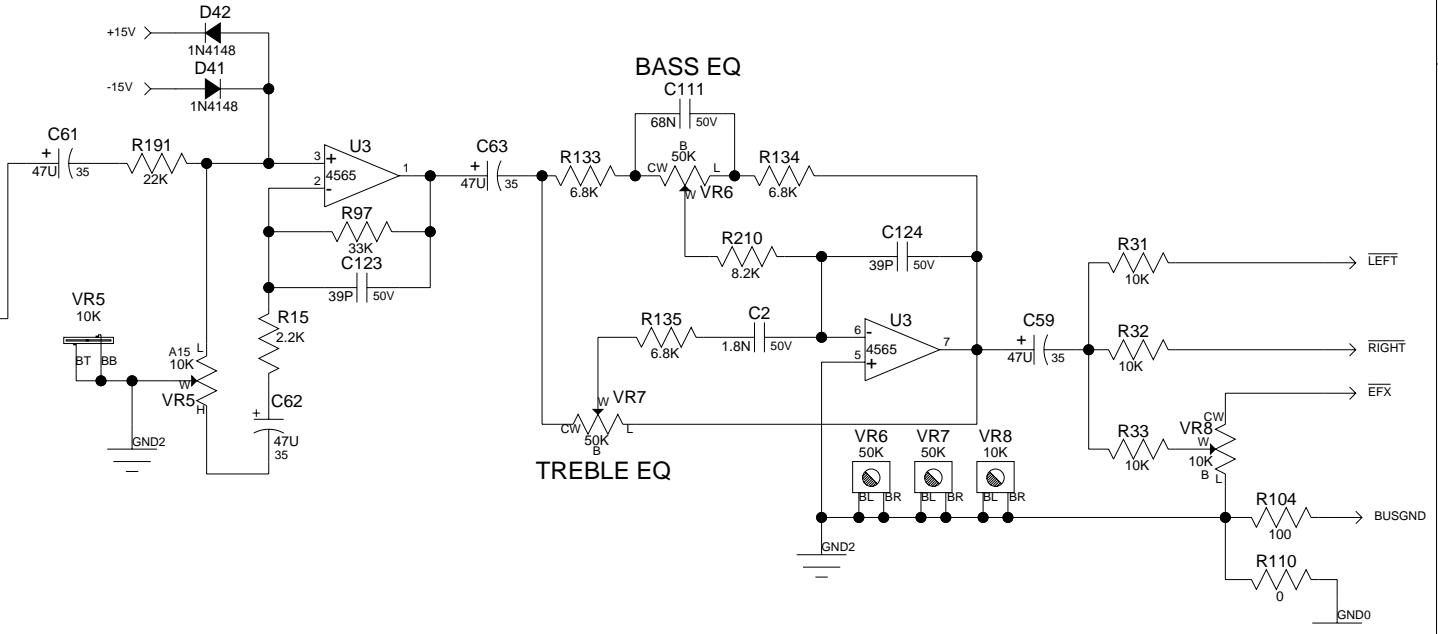
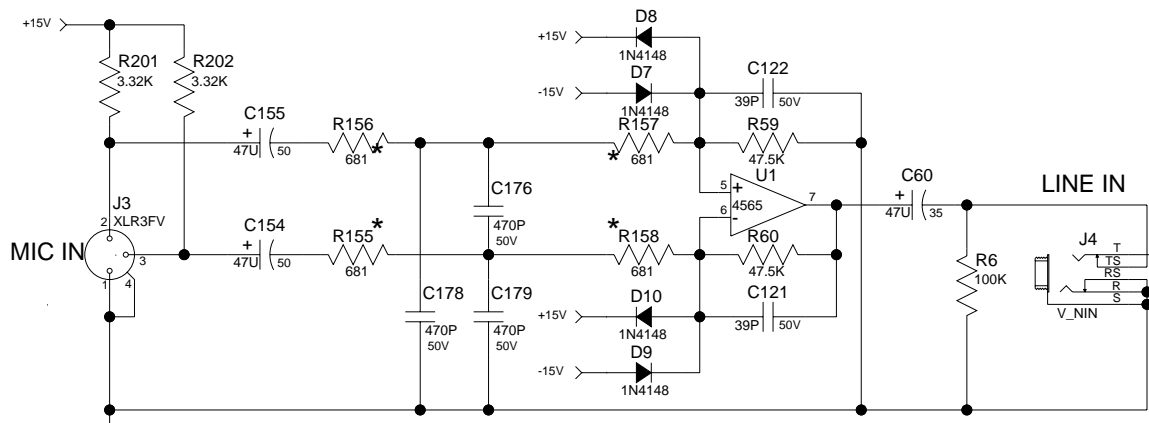
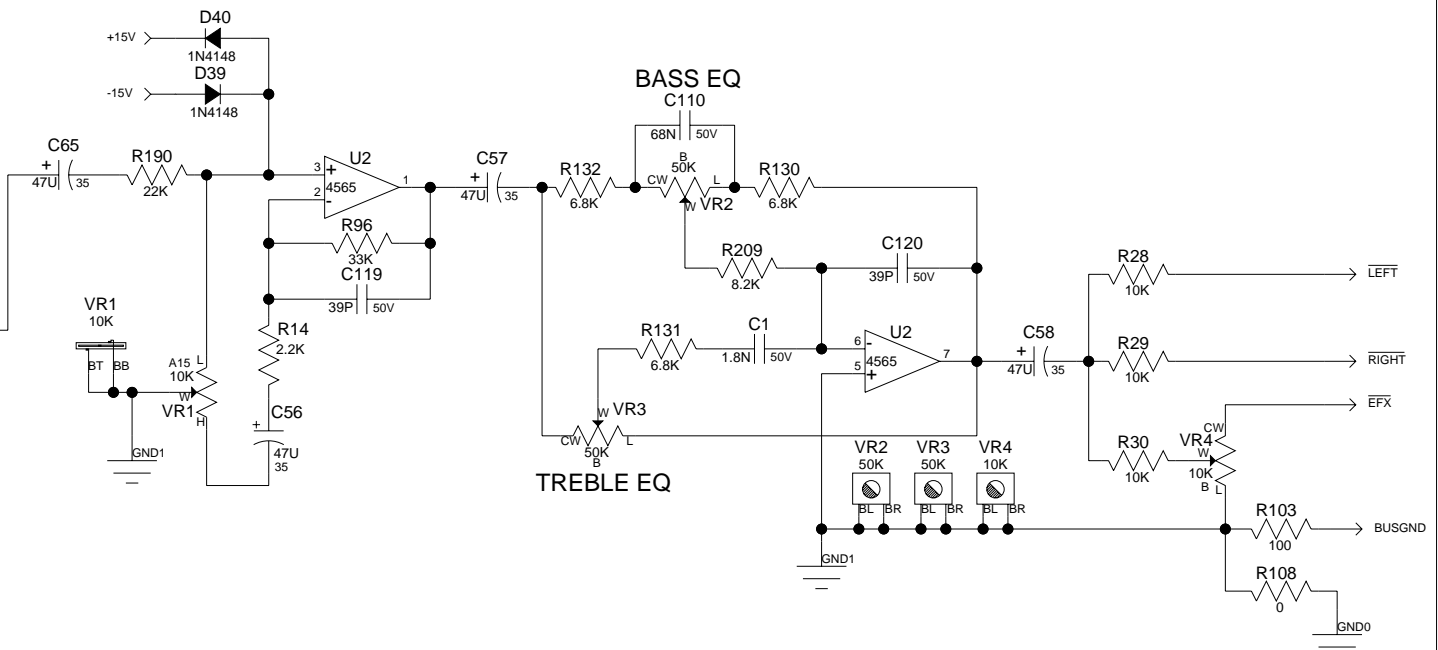
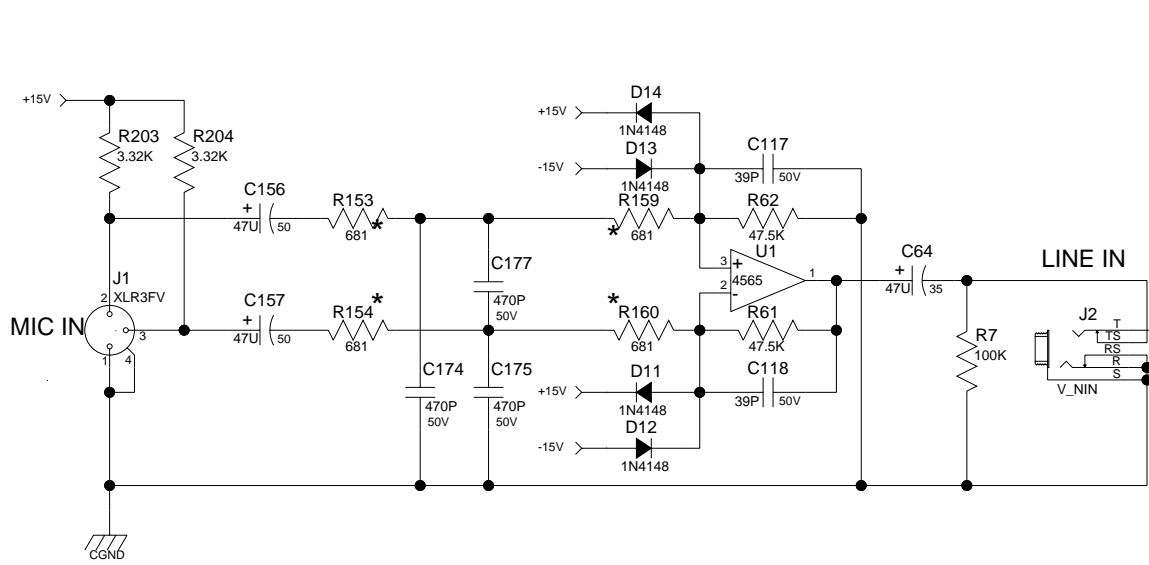
Company Proprietary Information

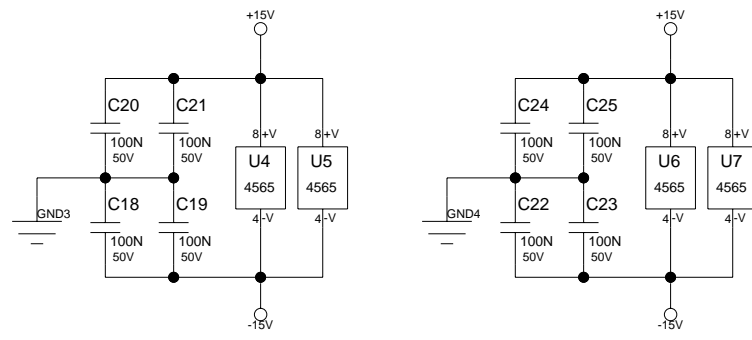
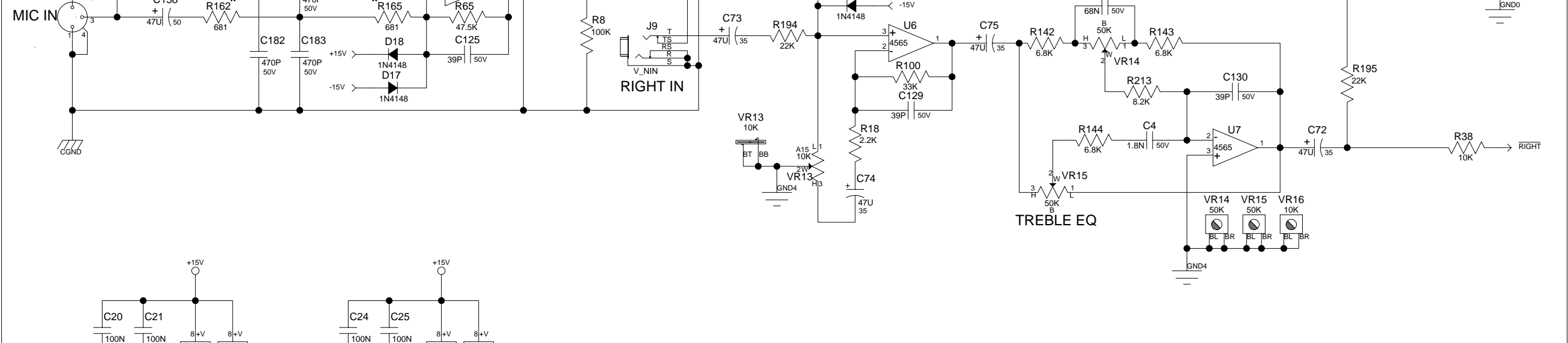
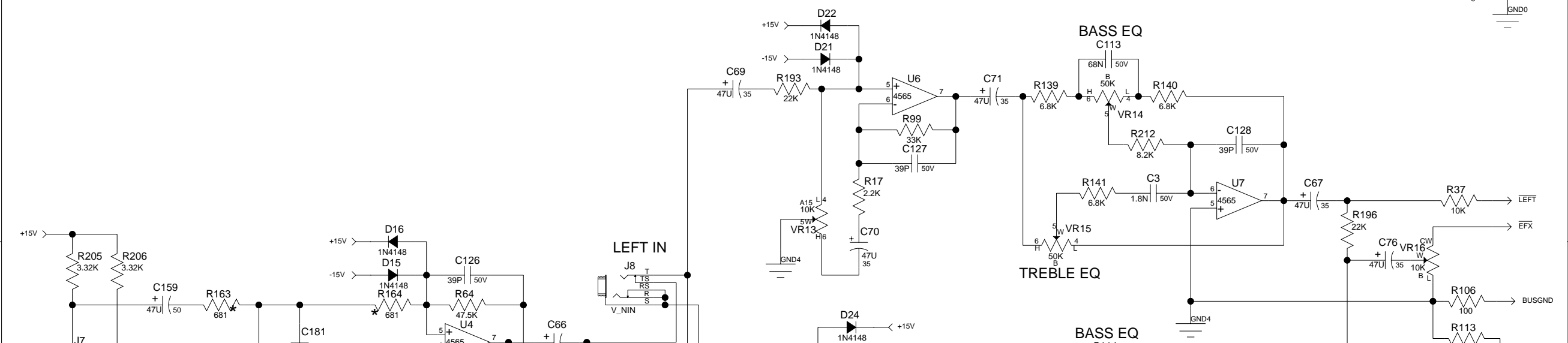
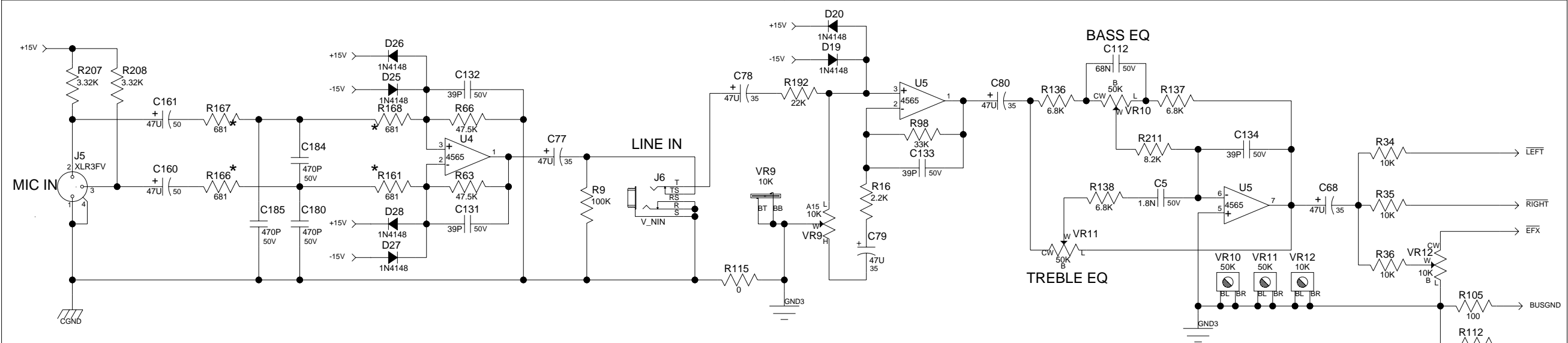


Product:		ESCORT
Title:		ESCORT
Project Number:		
Eng: JMH	Release Date:	
C Sheet 1 of 7	Saved: 11-15-2007_9:24	

Patents:

Copyright Peavey Electronics Corporation 2005.

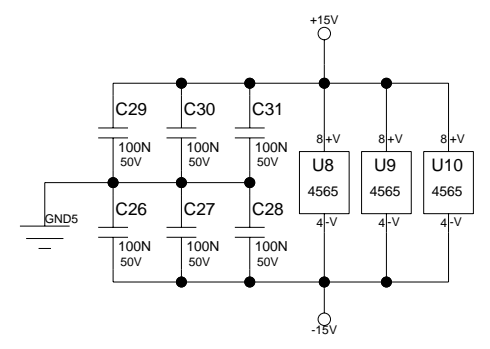
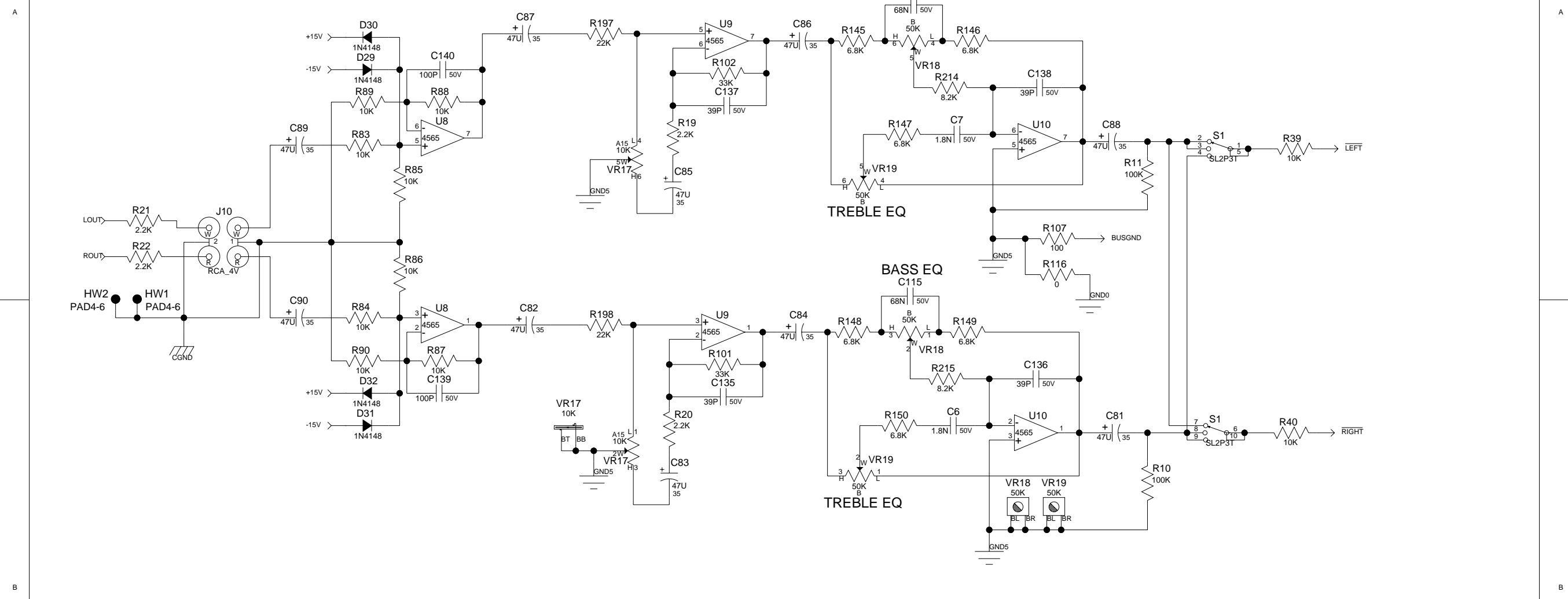




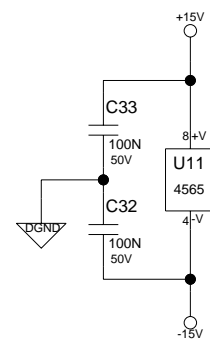
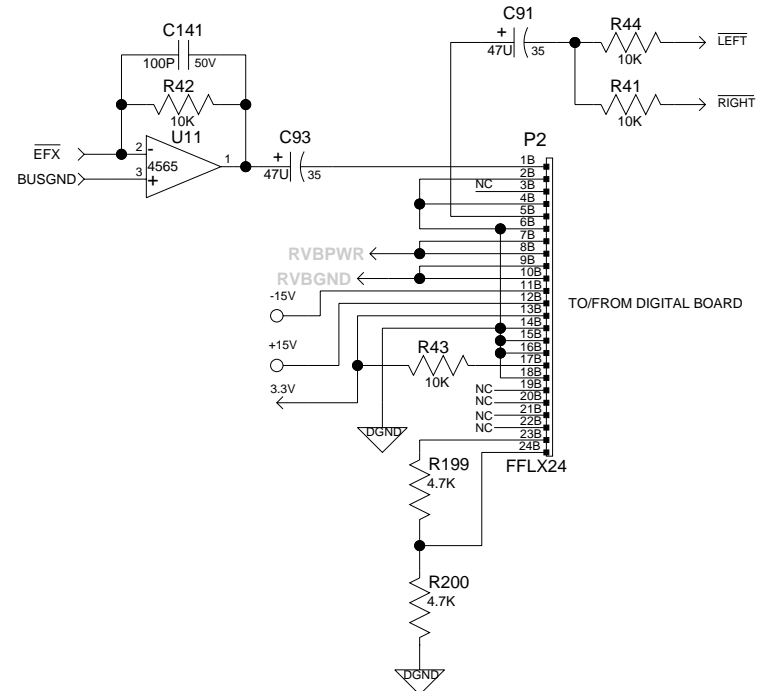
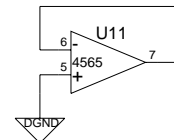
PEAVEY
Peavey Electronics Corp.
P. O. Box 2898
Meridian, MS 39301

Title: **ESCORT**
Sheet Title: **CHANNEL 3/4**

C Sheet 3 of 7 Date: 11-15-2007_9:24

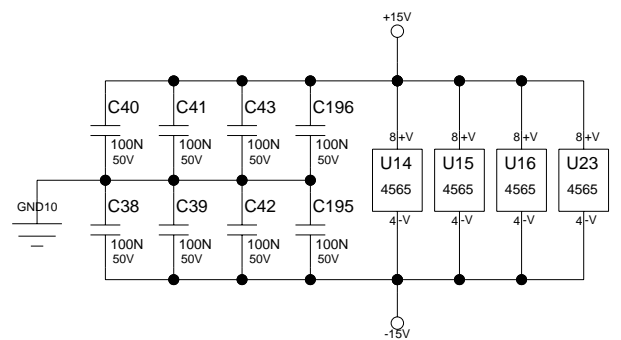
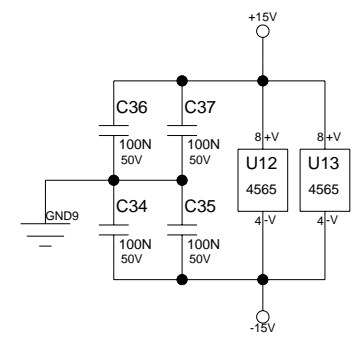
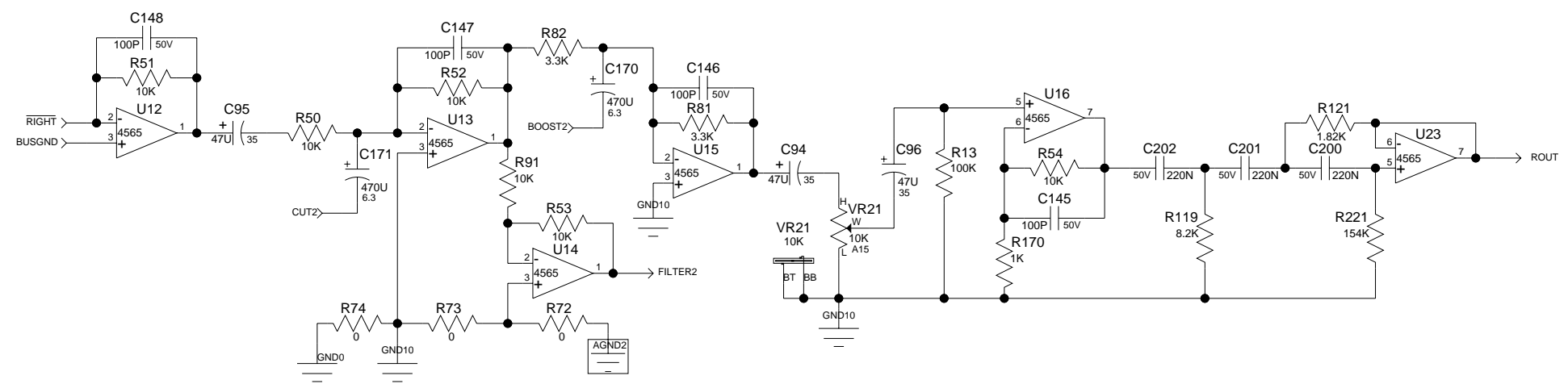
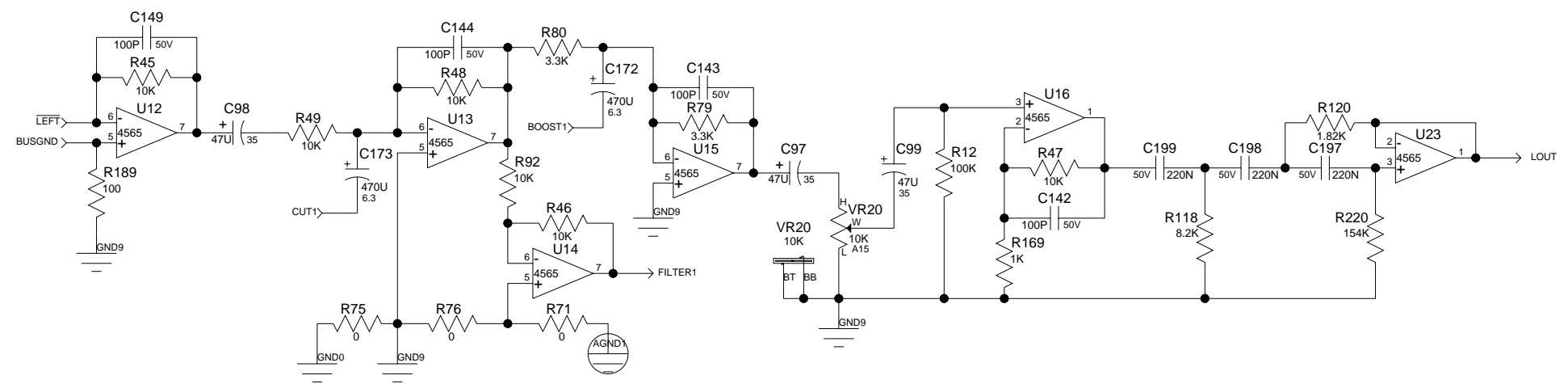


Title: **ESCORT**
Sheet Title: **CHANNEL 5**
C Sheet 4 of 7 Date: 11-15-2007_9:24

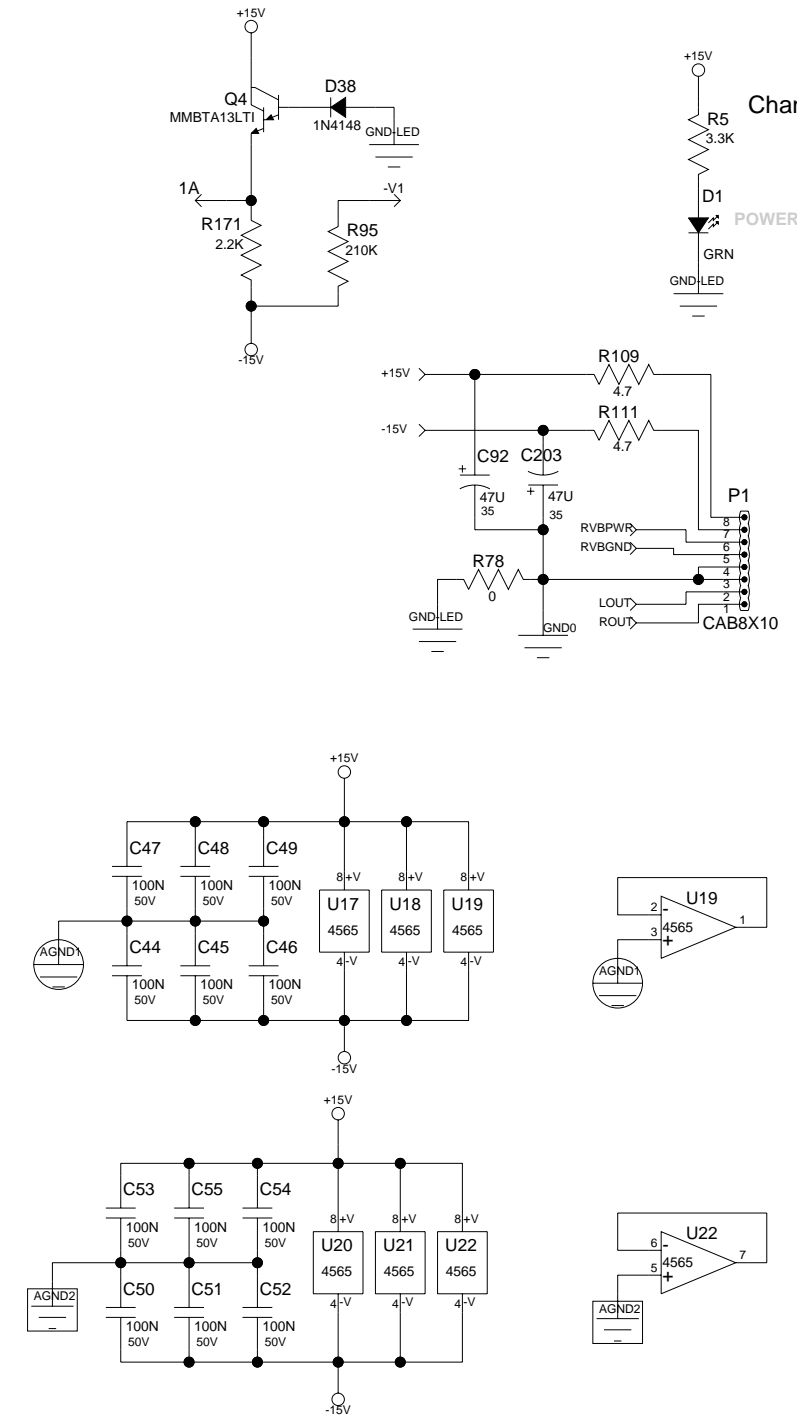
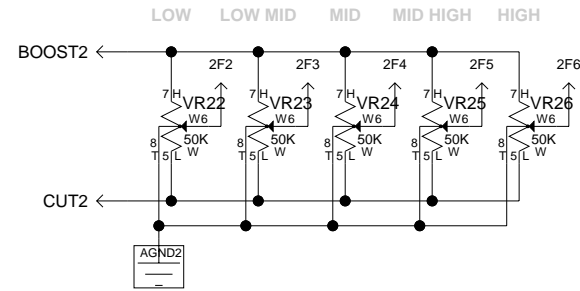
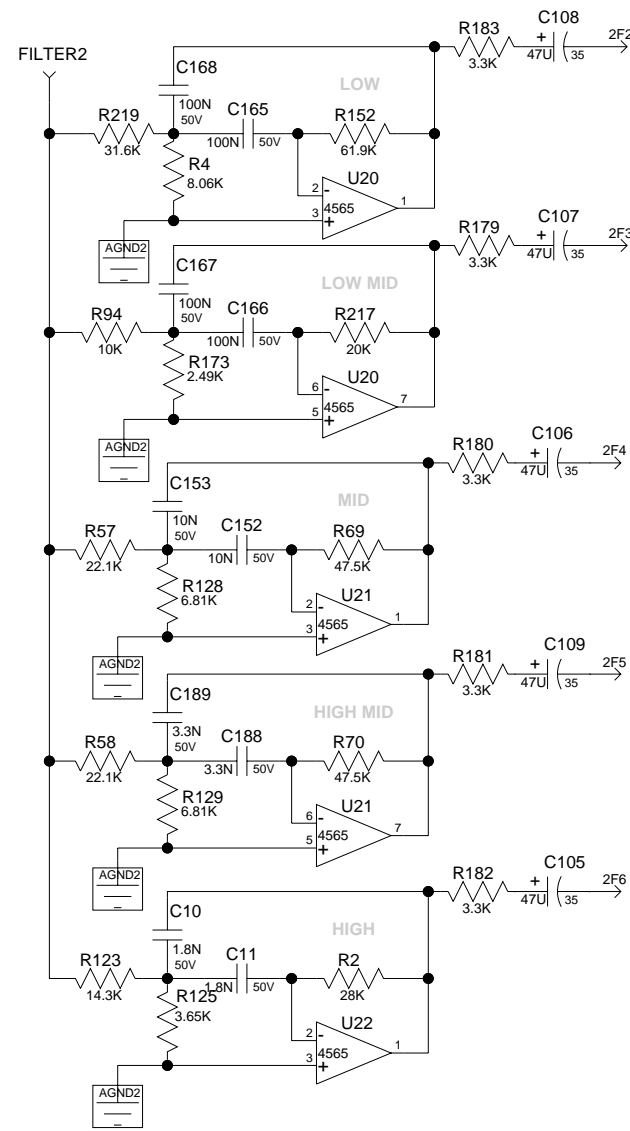
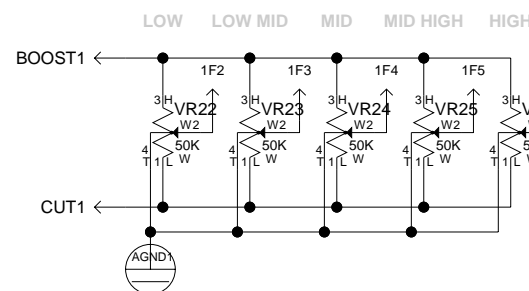
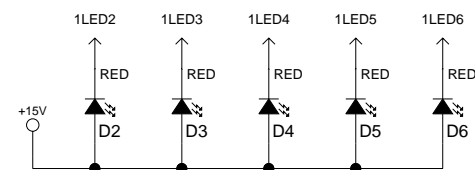
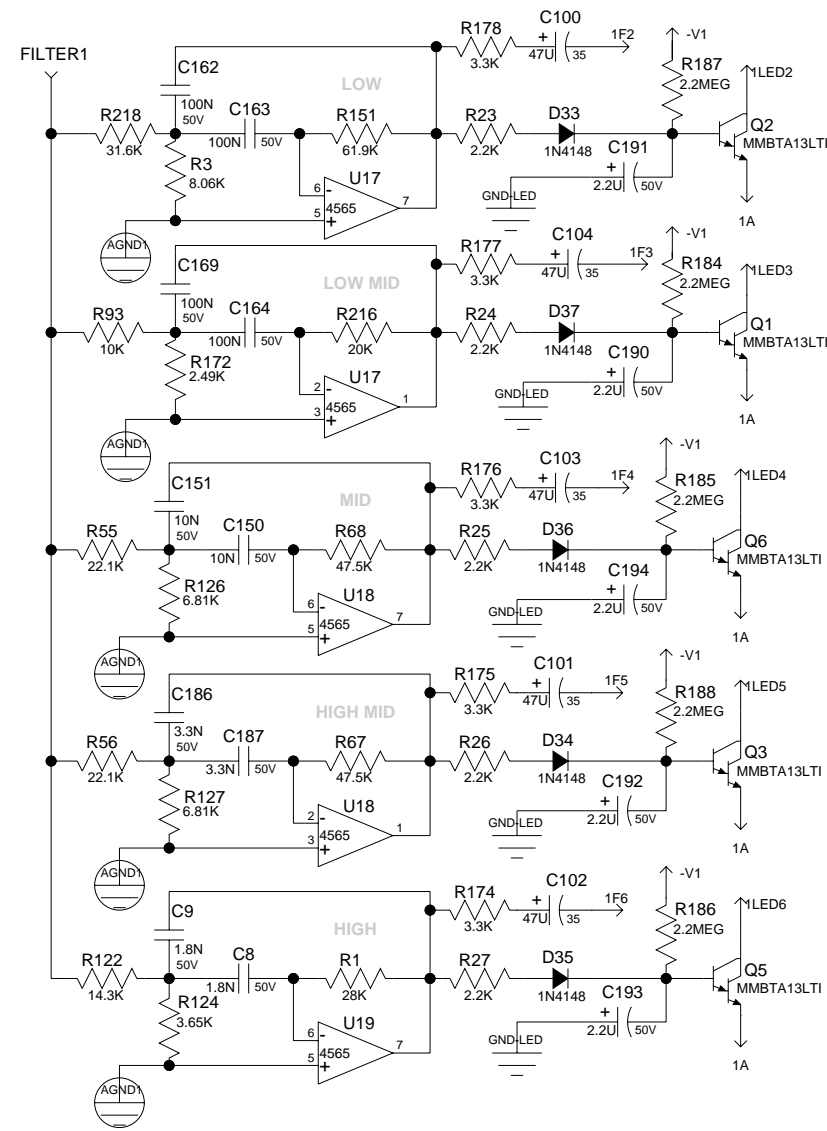


PEAVEY
Peavey Electronics Corp.
P. O. Box 2898
Meridian, MS 39301

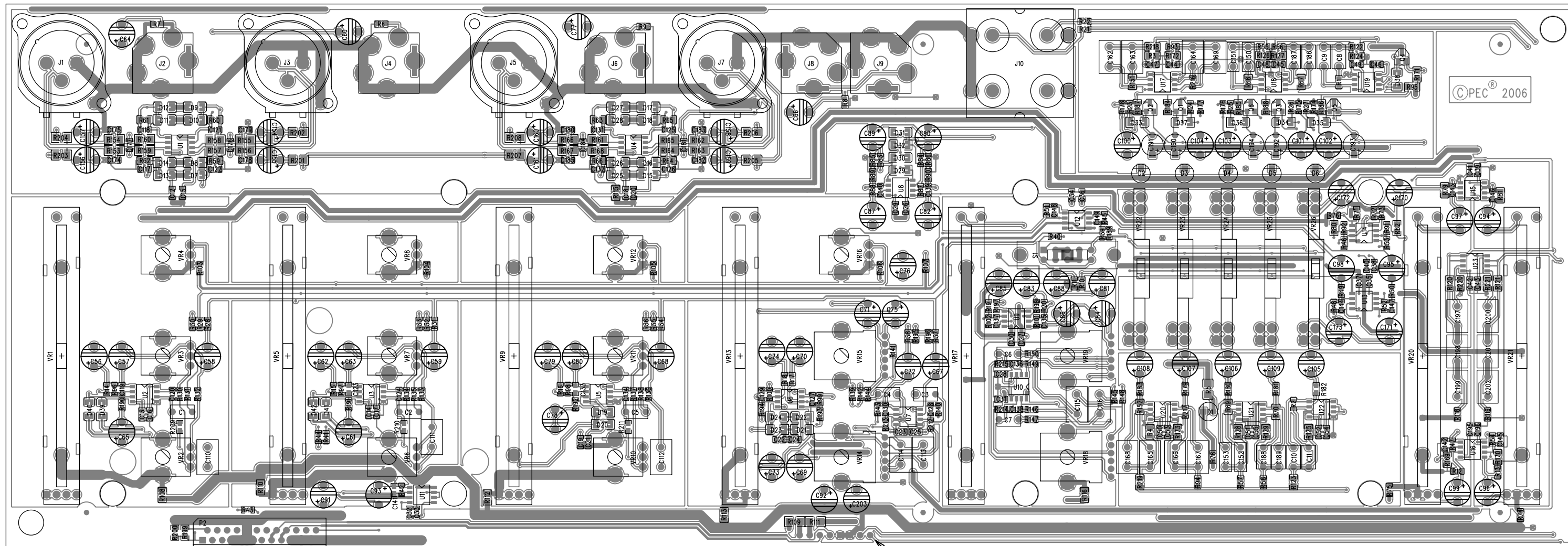
Title:	ESCORT
Sheet Title:	DIGITAL I/O
C Sheet 5 of 7	Date: 11-15-2007_9:24



Title: **ESCORT**
 Sheet Title: **MASTER**
 C Sheet 6 of 7 Date: 11-15-2007_9:24



Title: **ESCORT**
Sheet Title: **GRAPHIC EQ**



P1 INSTALLED ON SECONDARY SIDE - POST WAVE SOLDER

BILL OF MATERIAL REPORT

REPORT DATE/TIME: 11/19/2007 9:06:29 AM

BOARD NAME: Escort Main ASSEMBLY LEVEL NUMBER: 99030005

PROJECT NUMBER: P0600047 DESIGNER: FJE

Qty.	Part #	Description	Reference Designators

--			
2	602-70200165-1	RES SMD 0805 1/10W 5% 4.7K	R199 R200
2	602-70200172-1	RES SMD 0805 1/10W 5% 1K	R169 R170
1	602-70200211-1	RES SMD 0805 1/8W 1% 210K	R95
1	602-K11422201-1	RES SMD 0805 1/8W 5% 2.2K T&R (KW000004)	R171
2	30200041	4.7 1/4W 5% MF 1206	R109 R111
16	30200085	681 1/4W 1% MF 1206	R153 R154 R155 R156 R157 R158 R159 R160 R161 R162 R163 R164 R165 R166 R167 R168
8	30200105	3.32K 1/4W 1% MF 1206	R201 R202 R203 R204 R205 R206 R207 R208
6	30200164	0.0 JUMPER SMT 0805	R108 R110 R112 R113 R115 R116
2	30200203	2.49K 1/10W 1% MF 0805	R172 R173
12	30200205	47.5K 1/10W 1% MF 0805	R59 R60 R61 R62 R63 R64 R65 R66 R67 R68 R69 R70
2	30200206	14.3K 1/10W 1% MF 0805	R122 R123
2	30200208	8.06K 1/10W 1% MF 0805	R3 R4
2	30200210	154K 1/10W 1% MF 0805	R220 R221
2	30200257	31.6K 1/10W 1% MF 0805	R218 R219
7	30200281	0.0 JUMPER 0.1 0603	R71 R72 R73 R74 R75 R76 R78
1	30200287	100 1/10W 1% MF 0603	R189

8	30200288	100K	1/10W	5%	MF 0603	R6 R7 R8 R9 R10 R11 R12 R13
12	30200289	10K	1/10W	1%	MF 0603	R83 R84 R85 R86 R87 R88 R89 R90 R91 R92 R93 R94
2	30200295	20K	1/10W	1%	MF 0603	R216 R217
4	30200296	22.1K	1/10W	1%	MF 0603	R55 R56 R57 R58
2	30200299	28K	1/10W	1%	MF 0603	R1 R2
2	30200323	8.2K	1/10W	1%	MF 0603	R118 R119
4	30200328	6.81K	1/10W	1%	MF 0805	R126 R127 R128 R129
2	30200332	61.9K	1/10W	1%	MF 0805	R151 R152
2	30200423	3.65K	1/10W	1%	MF 0805	R124 R125
2	30200437	1.82K	1/10W	1%	MF 0805	R120 R121
9	30200500	22K	1/10W	5%	0603	R190 R191 R192 R193 R194 R195 R196 R197 R198
14	30200501	2.2K	1/10W	5%	0603	R14 R15 R16 R17 R18 R19 R20 R21 R22 R23 R24 R25 R26 R27
7	30200502	33K	1/10W	5%	0603	R96 R97 R98 R99 R100 R101 R102
21	30200503	6.8K	1/10W	5%	0603	R130 R131 R132 R133 R134 R135 R136 R137 R138 R139 R140 R141 R142 R143 R144 R145 R146 R147 R148 R149 R150
7	30200504	8.2K	1/10W	5%	0603	R209 R210 R211 R212 R213 R214 R215
27	30200505	10K	1/10W	5%	0603	R28 R29 R30 R31 R32 R33 R34 R35 R36 R37 R38 R39 R40 R41 R42 R43 R44 R45 R46 R47 R48 R49 R50 R51 R52 R53 R54

5	30200506	100 1/10W 5% 0603	R103 R104 R105 R106 R107
10	30200507	3.3K 1/10W 5% 0603	R174 R175 R176 R177 R178 R179 R180 R181 R182 R183
46	30300128	0.1UF 50V 10% Y5V 0603	C12 C13 C14 C15 C16 C17 C18 C19 C20 C21 C22 C23 C24 C25 C26 C27 C28 C29 C30 C31 C32 C33 C34 C35 C36 C37 C38 C39 C40 C41 C42 C43 C44 C45 C46 C47 C48 C49 C50 C51 C52 C53 C54 C55 C195 C196
11	30300133	100PF 50V 5% NPO 0603	C139 C140 C141 C142 C143 C144 C145 C146 C147 C148 C149
22	30300220	39PF 50V 5% NPO 0603	C117 C118 C119 C120 C121 C122 C123 C124 C125 C126 C127 C128 C129 C130 C131 C132 C133 C134 C135 C136 C137 C138
12	30300222	470PF 50V 5% NPO 0603	C174 C175 C176 C177 C178 C179 C180 C181 C182 C183 C184 C185
5	30320180	2.2UF 50V 20% EL RAD	C190 C191 C192 C193 C194
7	30330124	0.068UF 50V 5% PE RAD	C110 C111 C112 C113 C114 C115 C116
11	30330127	1800PF 50V 5% PE RAD	C1 C2 C3 C4 C5 C6 C7 C8 C9 C10 C11
6	30330128	0.22UF 50V 5% PE RAD	C197 C198 C199 C200 C201 C202
8	30330129	0.1UF 50V 5% PE RAD	C162 C163 C164 C165 C166 C167 C168 C169
4	30330130	3300PF 50V 5% PE RAD	C186 C187 C188 C189

4	30330155	0.01UF 50V 5% PE RAD	C150 C151 C152 C153
6	30418051	MMBTA13LTI NPN DARL. SMT	Q1 Q2 Q3 Q4 Q5 Q6
23	30418506	4565 DUAL OPAMP SOIC8W	U1 U2 U3 U4 U5 U6 U7 U8 U9 U10 U11 U12 U13 U14 U15 U16 U17 U18 U19 U20 U21 U22 U23
1	30600183	8C RIBBON CABLE ASSM 10"	P1
1	30650972	24 FLT FLX 1.25MM CONN TH	P2
4	31190258	10KB SNGL 9MM VER	VR4 VR8 VR12 VR16
6	31190259	50KB SNGL 9MM DET VER	VR2 VR3 VR6 VR7 VR10 VR11
4	31190716	50KB DUAL 12MM DET VER	VR14 VR15 VR18 VR19
2	31191064	10K_ DUAL 60MM VER	VR13 VR17
5	31191065	10K_ SNGL 60MM VER	VR1 VR5 VR9 VR20 VR21
1	31322453	SWITCH 2P3T SLIDE PC V 9MM	S1
5	31466217	STEREO HID JACK NINS W/SPD	J2 J4 J6 J8 J9
4	31466325	FXLR NC3FAV A-SER VERT	J1 J3 J5 J7
8	70320182	47UF 50V 20% EL RAD	C154 C155 C156 C157 C158 C159 C160 C161
4	70320183	470UF 6.3V 20% EL RAD	C170 C171 C172 C173
55	70320344	47UF 35V 20% EL RAD	C56 C57 C58 C59 C60 C61 C62 C63 C64 C65 C66 C67 C68 C69 C70 C71 C72 C73 C74 C75 C76 C77 C78 C79 C80 C81 C82 C83 C84 C85 C86 C87 C88 C89 C90 C91 C92 C93 C94 C95 C96 C97 C98 C99

			C100 C101 C102 C103 C104 C105 C106 C107 C108 C109 C203
36	70418026	1N4148 (LL34) DIODE SMT	D7 D8 D9 D10 D11 D12 D13 D14 D15 D16 D17 D18 D19 D20 D21 D22 D23 D24 D25 D26 D27 D28 D29 D30 D31 D32 D33 D34 D35 D36 D37 D38 D39 D40 D41 D42
5	70450050	RED T1 LED W/.500" SPCR	D2 D3 D4 D5 D6
1	70450051	GRN T1 LED W/.500" SPCR	D1
5	71190459	50KW DUAL 20MM DET VER	VR22 VR23 VR24 VR25 VR26
1	71466272	QUAD NICKEL RCA JACK 24MM	J10
6	FIDUCIAL	????????????????????????????????	FIDUCIAL1 FIDUCIAL2
	FIDUCIAL3 FIDUCIAL4		FIDUCIAL5 FIDUCIAL6
1	K702005	3.3K 1/4W 5% MF 1206	R5
4	K702007	3.3K 1/10W 5% MF 0805	R79 R80 R81 R82
5	K70200443	2.2M 1/10W 5% MF 0805	R184 R185 R186 R187 R188
2	PCB_PAD46	PCB PAD #4-#6 MACH SCRW	HW1 HW2

 END OF BILL OF MATERIAL REPORT
