

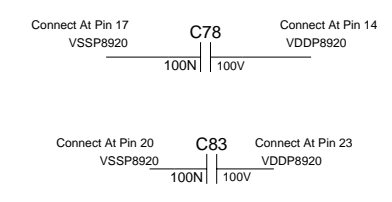
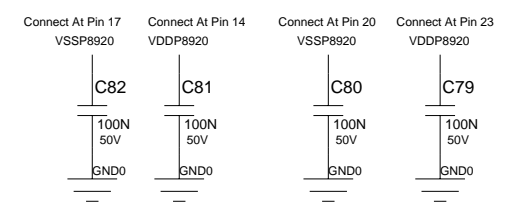
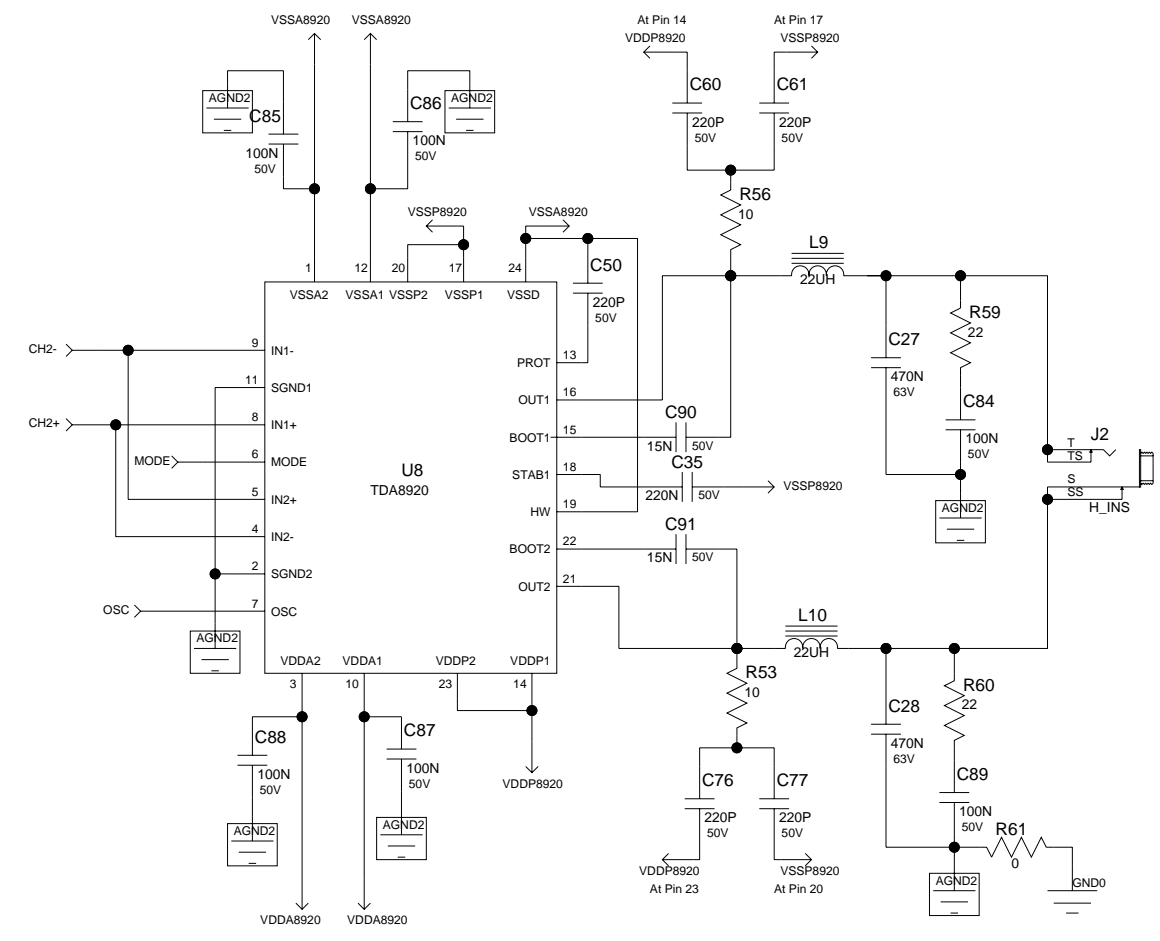
Title: ESCORTAMP
Sheet Title: Amp 1

A

A

B

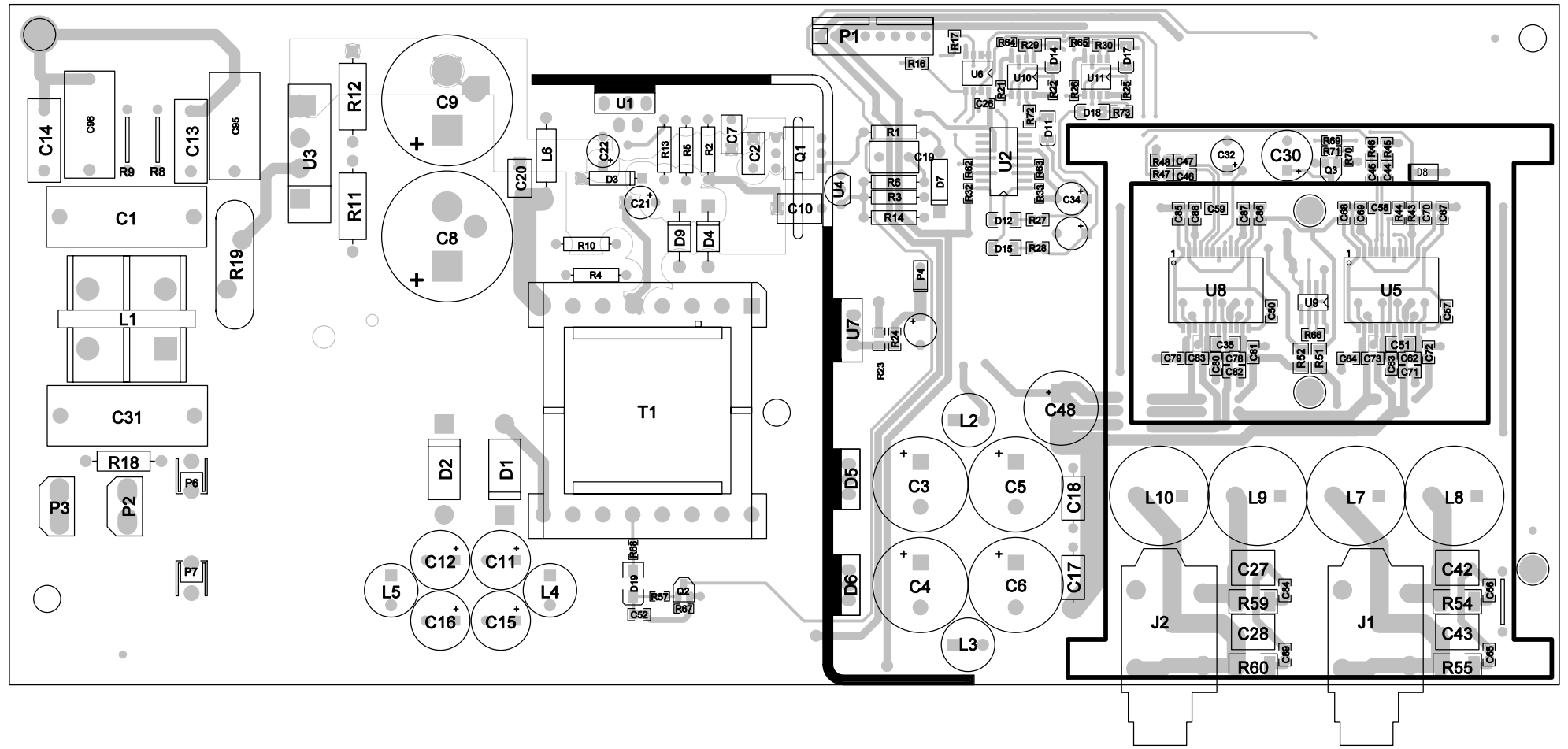
B

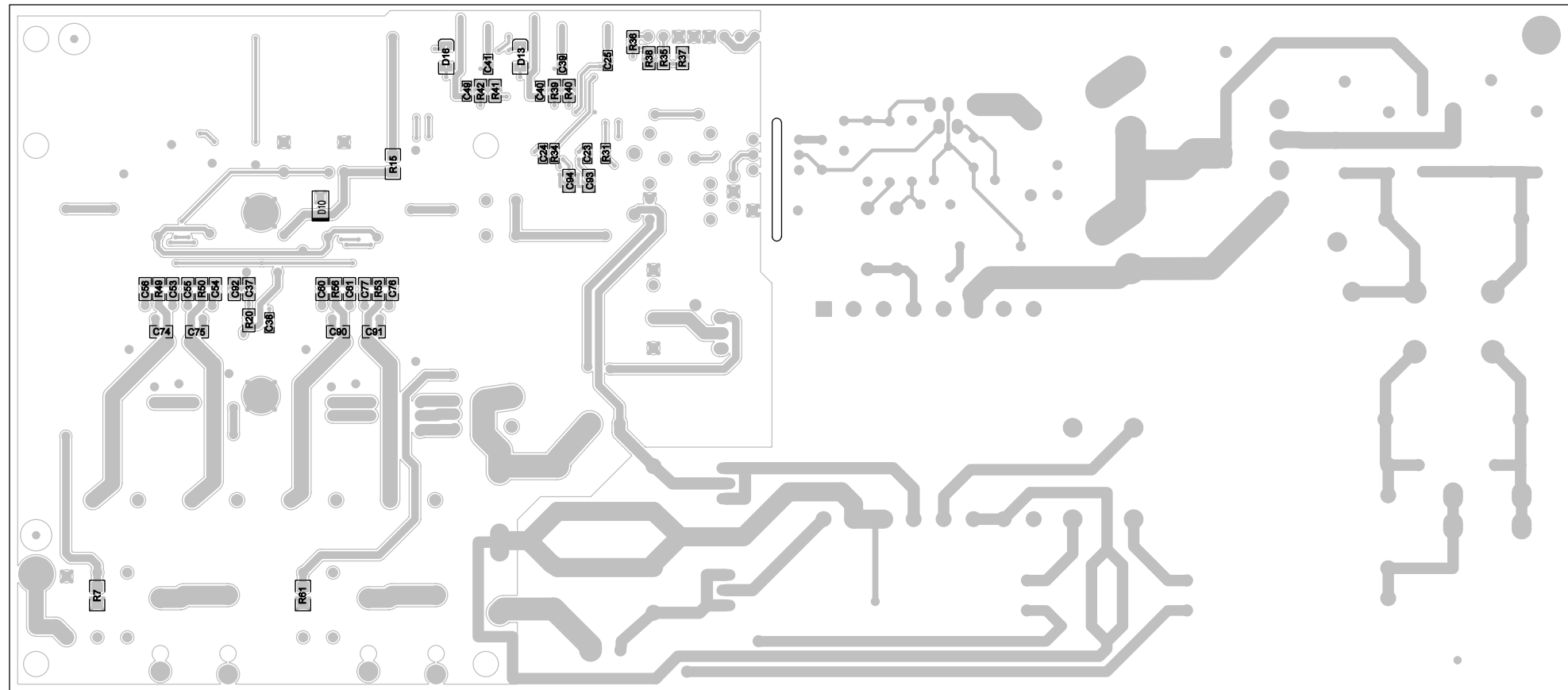


PEAVEY
Peavey Electronics Corp.
P. O. Box 2898
Meridian, MS 39301

Title: **ESCORTAMP**
Sheet Title: **Amp 2**

C Sheet 4 of 4 Date: 2-29-2008_14:38





BILL OF MATERIAL REPORT

REPORT DATE/TIME: 3/3/2008 8:09:52 AM

BOARD NAME: Escort PWR AMP ASSEMBLY LEVEL NUMBER: 29030111

PROJECT NUMBER: P0600047 DESIGNER: LFL

Qty.	Part #	Description	Reference Designators
2	30200010	0.0 1/4W 5% MF 1206	R7 R61
1	30200085	681 1/4W 1% MF 1206	R15
1	30200167	20K 1/10W 1% MF 0805	R20
4	30200173	4.99K 1/10W 1% MF 0805	R39 R40 R41 R42
1	30200188	1.00K 1/10W 1% MF 0805	R24
4	30200196	10 1/10W 1% MF 0805	R49 R50 R53 R56
2	30200198	499 1/10W 1% MF 0805	R72 R73
1	30200200	8.25K 1/10W 1% MF 0805	R66
4	30200238	22 1W 5% MF 2512	R54 R55 R59 R60
4	30200266	18.2K 1/10W 1% MF 0805	R29 R30 R37 R38
2	30200287	100 1/10W 1% MF 0603	R62 R63
1	30200288	100K 1/10W 5% MF 0603	R57
8	30200289	10K 1/10W 1% MF 0603	R31 R32 R33 R34 R68 R69 R70 R71
5	30200296	22.1K 1/10W 1% MF 0603	R21 R22 R25 R26 R67
2	30200310	4.7K 1/10W 5% MF 0603	R64 R65
2	30200330	33.2K 1/10W 1% MF 0805	R16 R17
1	30200334	15.0K 1/10W 1% MF 0805	R23
2	30200348	10 1/4W 1% MF 1206	R51 R52
2	30200377	24.9K 1/10W 1% MF 0805	R35 R36
6	30200458	5.49K 1/10W 1% MF 0805	R43 R44 R45 R46 R47 R48
2	30200494	12.4K 1/10W 1% MF 0805	R27 R28
2	30210017	100K 1W 5% MO AXL	R11 R12
1	30230046	560K 1/2W 5% FP AXL	R18

1	30240016	680	1/4W	5%	CF	AXL	R1
1	30240025	10K	1/4W	5%	CF	AXL	R6
1	30240035	150K	1/4W	5%	CF	AXL	R10
1	30240036	220K	1/4W	5%	CF	AXL	R4
1	30240043	18.7K	1/4W	1%	MF	AXL	R14
1	30240055	2.43K	1/4W	1%	MF	AXL	R5
1	30240081	221	1/4W	1%	MF	AXL	R13
1	30240089	1.65K	1/4W	1%	MF	AXL	R2
1	30240200	10 OHM	3A		INRUSH	LIMITER	R19
1	30241078	1.82K	1/4W	1%	MF	AXL	R3
2	30300069	0.22UF	50V	10%	X7R	1206	C35 C51
2	30300086	10PF	50V	5%	NPO	0805	C93 C94
2	30300087	39PF	50V	5%	NPO	0805	C37 C92
12	30300089	220PF	50V	5%	NPO	0805	C50 C53 C54 C55 C56 C57 C58 C59 C60 C61 C76 C77
20	30300093	0.1UF	50V	10%	X7R	0805	C63 C64 C65 C66 C67 C68 C69 C70 C71 C72 C79 C80 C81 C82 C84 C85 C86 C87 C88 C89
1	30300124	0.01UF	50V	+80,20%	Y5V	0603	C38
8	30300128	0.1UF	50V	10%	Y5V	0603	C23 C24 C25 C26 C39 C40 C41 C49
1	30300148	0.022UF	50V	5%	X7R	0805	C52
4	30300154	0.015UF	50V	10%	X7R	0805	C74 C75 C90 C91
4	30300217	0.47UF	25V	5%	X7R	0805	C44 C45 C46 C47
4	30300249	0.1UF	100V	20%	X7R	0805	C62 C73 C78 C83
4	30320185	10UF	50V	20%	ELL	RAD	C21 C22 C34 C36
1	30320265	100UF	16V	20%	EL	RAD	C30
2	30320270	4700PF	250V	20%	"Y"	RADH	C95 C96
2	30320322	2200PF	250V	20%	"Y"	RADH	C13 C14
4	30320324	470UF	25V	20%	ELS	RAD	C11 C12 C15 C16

2	30320327	0.22UF 275V 20% "X" RADH	C1 C31
2	30320344	47UF 35V 20% EL RAD	C32 C33
1	30320566	220UF 63V 20% EL LOW ESR	C48
2	30320582	470UF 200V 20% EL SNAP IN	C8 C9
1	30320586	1000PF 250V 20% "Y2" RADH	C10
1	30320667	1000PF 1000V 10% CER RAD	C20
4	30320673	2200UF 35V 20% EL LOW ESR RAD	C3 C4 C5 C6
1	30330128	0.22UF 50V 5% PE RAD	C19
1	30330135	680PF 50V 5% PE RAD	C7
1	30330136	0.047UF 50V 5% PE RAD	C2
4	30330159	0.47UF 63V 5% PES RAD	C27 C28 C42 C43
2	30340101	0.1UF 50V 10% X7R AXL	C17 C18
2	30400026	1A 600V 35N -DIODE T&R	D4 D9
1	30400035	QUASI RESONANT PWR SWITCH	U1
1	30400173	CNY17-3F BASELESS OPTO	Q1
1	30400316	LM317 ADJ VR INSUL TO220F	U7
1	30400605	BR RECT INLINE 600V 6A	U3
2	30403603	MBRF40250T DL SCHOTKY DIODE	D5 D6
1	30405931	1N5931B, 18V, 1.5W, ZENER	D3
1	30407431	ZR431C ADJ SHUNT REG. RAD	U4
8	30418026	1N4148 (LL34) DIODE SMT	D11 D12 D13 D14 D15 D16 D17 D18
2	30418135	2N3904 NPN SOT23	Q2 Q3
1	30418231	NJM13700 DUAL OTA SMT	U2
1	30418261	1N4003 - SMT - SMA PKG	D19
1	30418389	5.1V ZENER (SOD123)-SMT	D10
3	30418506	4565 DUAL OPAMP SOIC8W	U6 U10 U11
1	30418546	5.6V ZENER (SOD123)-SMT	D8
2	30418646	TDA8920 CLASS D POWER AMP	U5 U8
1	30418694	LM555 TIMER SOIC8	U9
2	30420420	MUR420 FAST RECOVERY DIODE	D1 D2
1	30464742	1N4742A 12V ZENER T&R	D7

1	30500022	ESCORT 150 POWER TRANSFORMER	T1
1	30502122	FERRITE BEAD INDUCTOR T&R	L6
4	30504103	22UH, 5A INDUCTOR	L7 L8 L9 L10
1	30519985	COMMON MODE CHOKE	L1
4	30519989	OUTPUT CHOKE (SLUG CORE)	L2 L3 L4 L5
3	30600136	0 OHM 22GA JMPR AXL	R8 R9 R58
2	30901714	FUSE CLIP, 5 X 20MM -T&A	P6 P7
2	31466222	JACK, MONO R/A 1/4" 6.5MM	J1 J2
2	33716194	SPADE .250 PC MNT .093	P2 P3
1	33717010	8 HDR H SR .100" TIN LK	P1
1	33717122	2 HDR V SR .100" TIN	P4
1	ESCTFANTUNL	??	FAN_SHIELD
6	FIDUCIAL	??	FD1 FD2 FD3 FD4 FD5 FD6
4	PCB_PAD46	PCB PAD #4-#6 MACH SCRW	HW1 HW4 HW5 HW6

 END OF BILL OF MATERIAL REPORT
