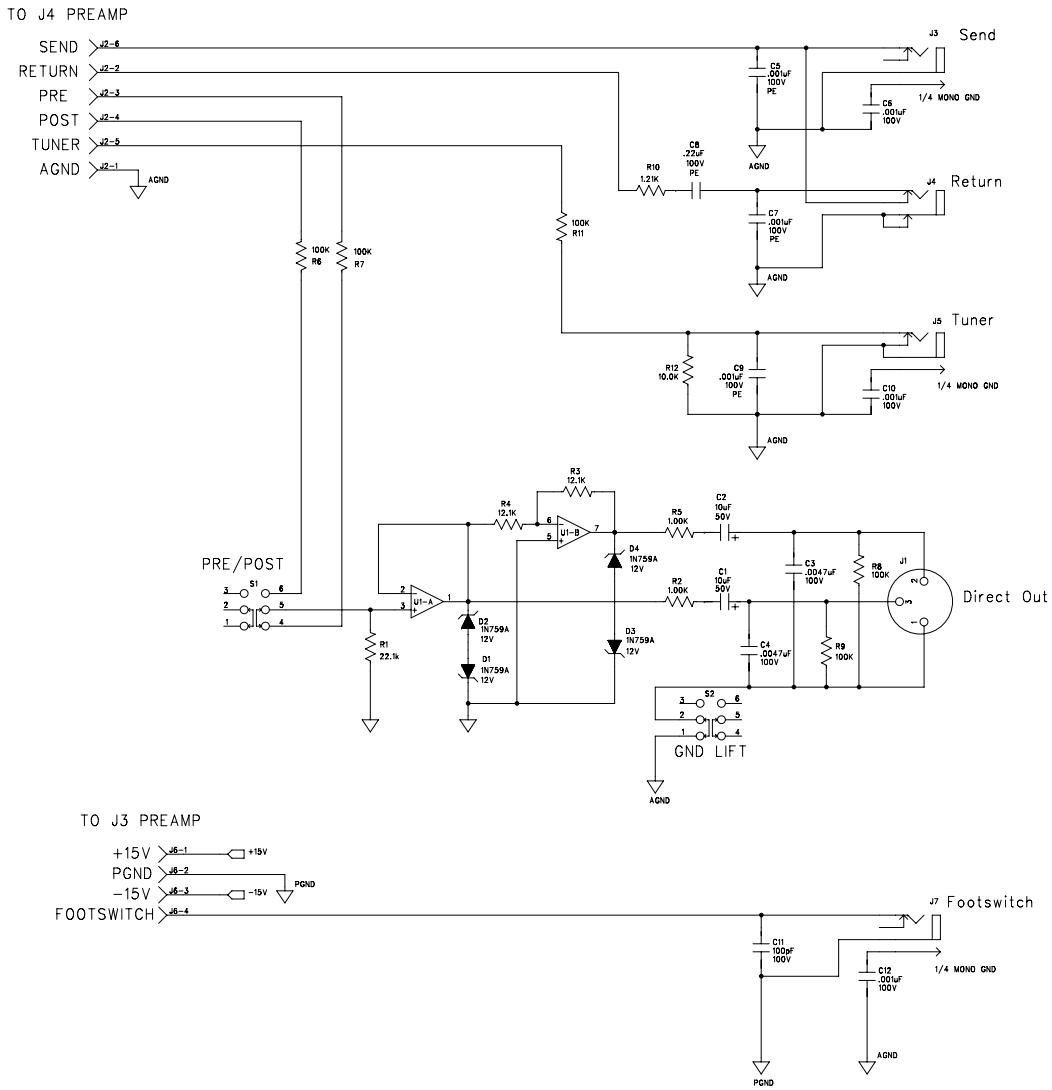


REVISION RECORD			
LTR	ECO NO:	APPROVED:	DATE:



NOT VALID UNLESS STAMP IS RED

gallien technology

2234 INDUSTRIAL DRIVE
STOCKTON CA, 95208
VOICE: 209-234-7300
FAX: 209-234-8420

APPROVALS		TITLE:	
INT	DATE	SIZE	DRAWING NO:
DESIGNED: R.A.G.	1-31-01	B	406-0232-A
DRAWN: D.O.	10/22/07	B	PART NO:
ELEC:			206-0232-A
MECH:			COMPANY:
D/A:			GALLIEN-KRUEGER
RELEASED:			FILENAME: 6232A.SCH

6232A BOM-8/5/2008-Rev B

PCB WORK INSTRUCTIONS

DWG 420-0232-A

NOTES:

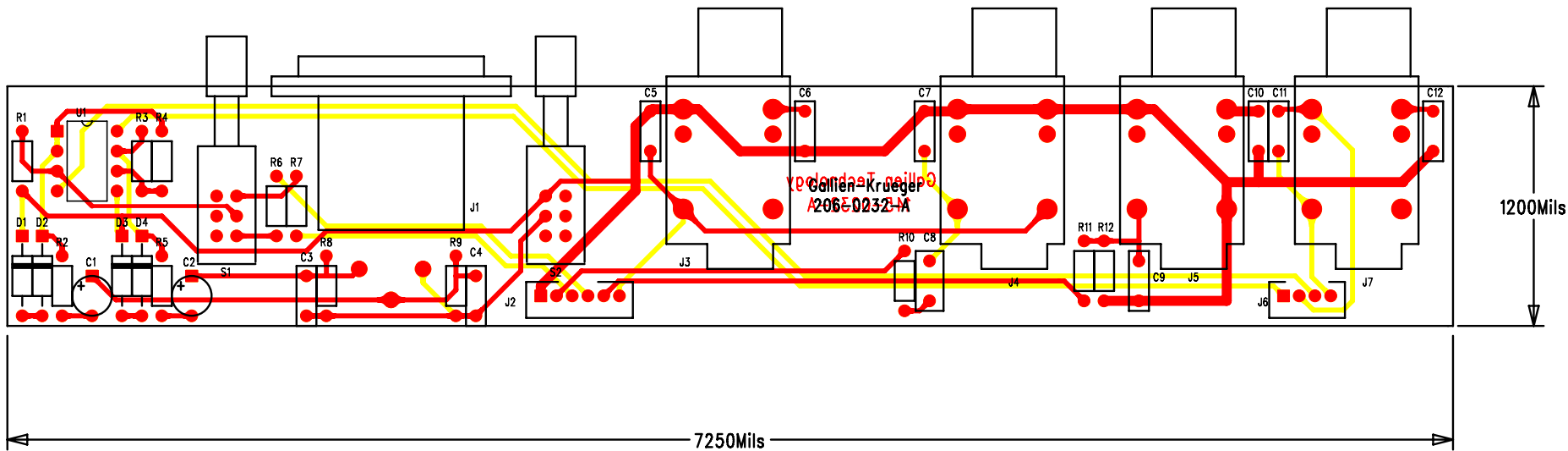
UNLESS OTHERWISE SPECIFIED:

- 1. SQUARE PADS ON THRU HOLE PARTS (ie: CONNECTORS, DIPS, SIPS, LEDS) DENOTE PIN 1.
- 2. ALL BOARDS REQUIRE A COMPLETE AND THOROUGH VISUAL INSPECTION.
- 3. ALL BOARDS MUST BE BARE BOARD TESTED.
- 4. ASSEMBLE AND SOLDER PER ANSI/IPC-A-610B.

LOADING

FINAL QA

- 5. CHECK TO SEE ALL POTS, JACKS, AND SWITCHES ARE MOUNTED FLUSH AND STRAIGHT



NOT VALID UNLESS STAMP IS RED	gallien technology		2234 INDUSTRIAL DRIVE STOCKTON CA 95206 VOICE: 209-234-7300 FAX: 209-234-8021	
	APPROVALS		TITLE: GOLDLINE 500 I/O BOARD	
	INIT	DATE	SIZE	DRAWING NO: 405- 0232-A
	DESIGNED: R.A.G.	10/23/07	B	PART NO: 145- 0232-A
LAYER DESCRIPTION: TOP SIDE ISOLATION	DRAWN: D.O.	11/6/07	REV. A	
	ELEC:		COMPANY: GALLIEN-KRUEGER	
	MECH:		FILENAME: 5232A.pcb	
	GERBER FILE NAME: 5232A.pcb			