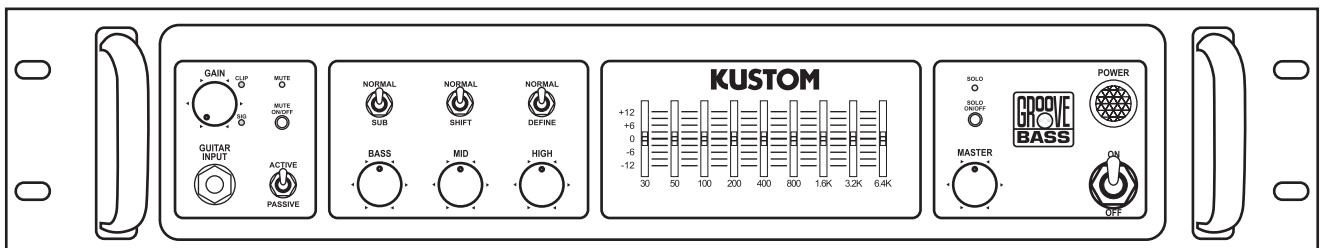
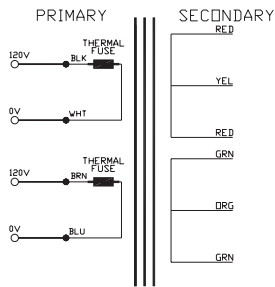


# KUSTOM

## SCHEMATIC

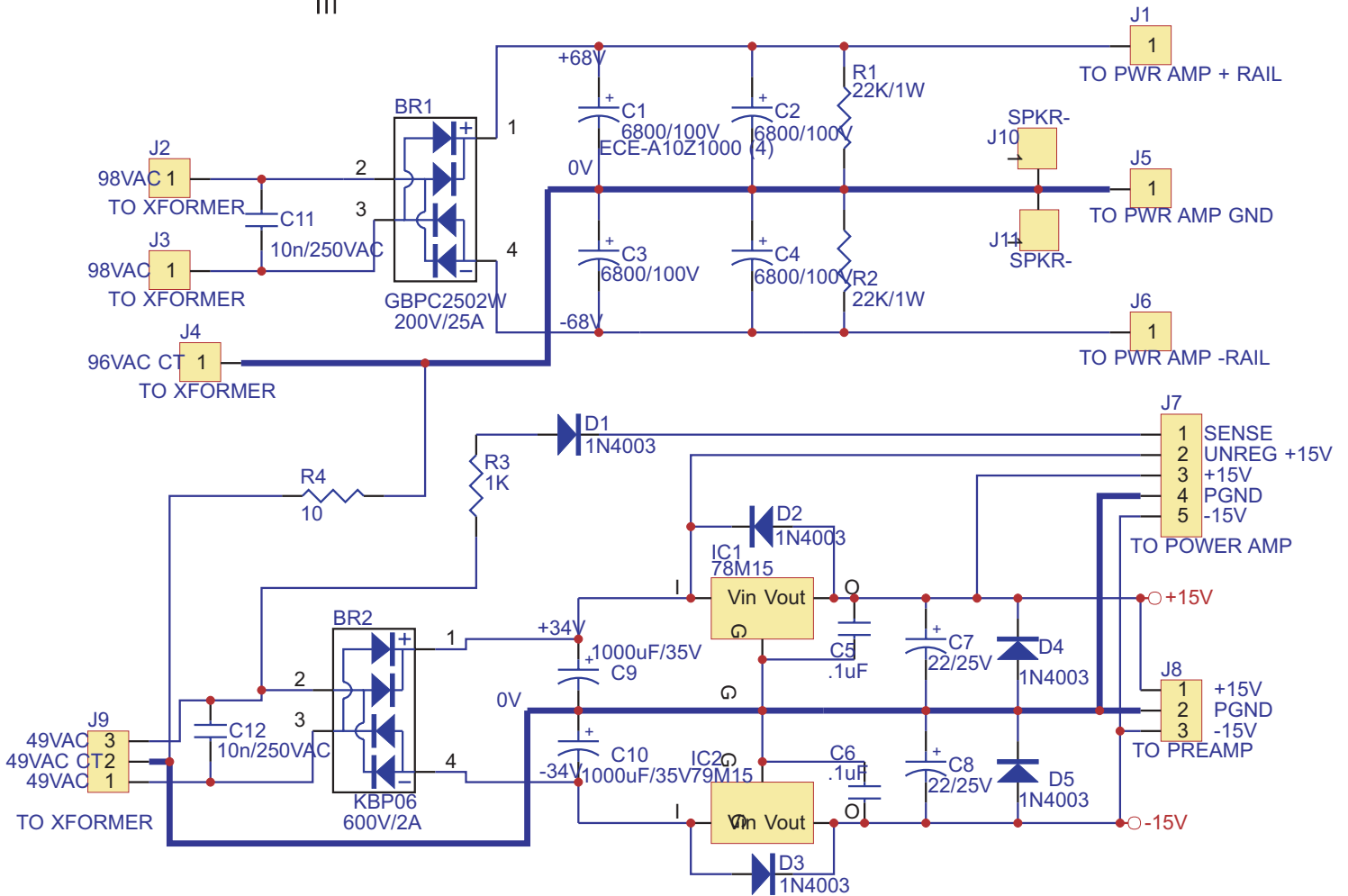
### Groove 1200

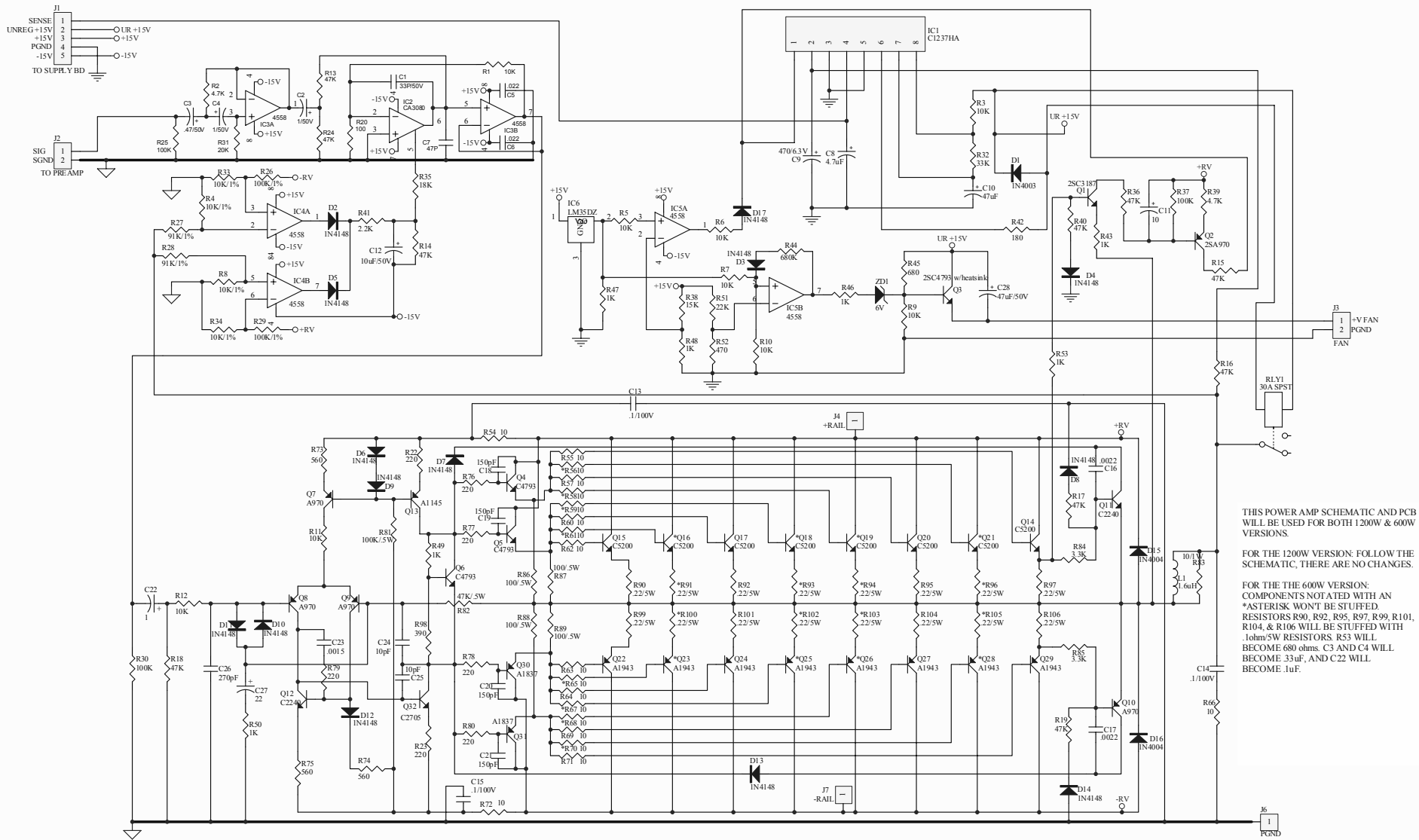




## Groove 1200HD Power Transformer Specifications

WINDING	VOLTAGE NO-LOAD	VOLTAGE LOADED	RATED CURRENT	Hz	VA	
RED-RED (YEL CT)	141.0	136.0	5.45A	50/60	741.0	
GRN-GRN (DRG CT)	38.0	36.0	0.25A	50/60	9	
THERMAL FUSE 10A/130° C					TOTAL	750.0

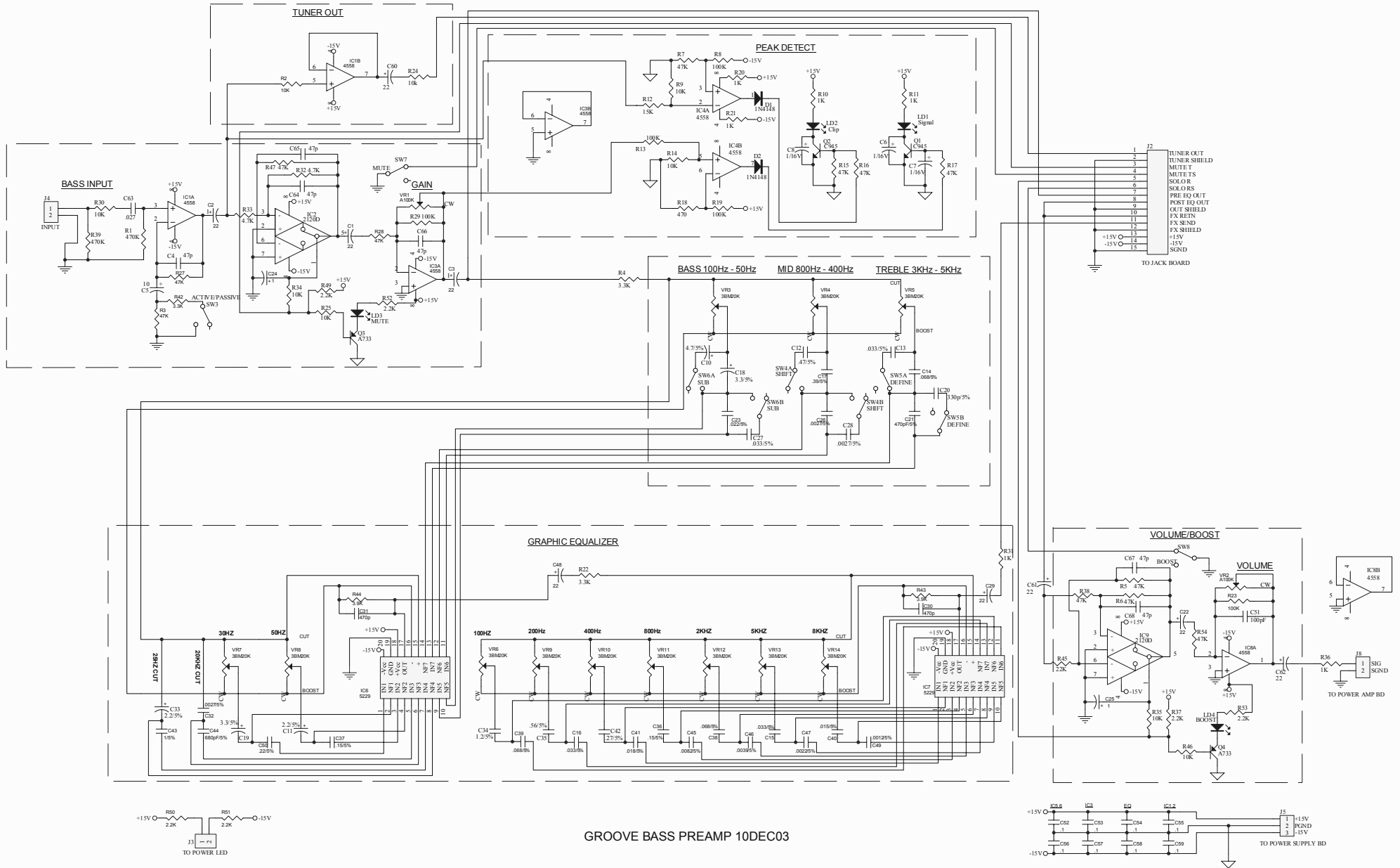




THIS POWER AMP SCHEMATIC AND PCB WILL BE USED FOR BOTH 1200W & 600W VERSIONS.

FOR THE 1200W VERSION: FOLLOW THE SCHEMATIC, THERE ARE NO CHANGES.

FOR THE THE 600W VERSION: COMPONENTS NOTATED WITH AN \*ASTERISK WONT BE STUFFED. RESISTORS R90, R92, R95, R97, R99, R101, R104, & R106 WILL BE STUFFED WITH .1ohm/5W RESISTORS. R53 WILL BECOME 680 ohms. C3 AND C4 WILL BECOME 33uF, AND C22 WILL BECOME .1uF.



1	TUNER OUT
2	TUNER SHIELD
3	MUTE F
4	MUTE T
5	SOLOR
6	SOLOR
7	PRE EQ OUT
8	POST EQ OUT
9	OUT SHIELD
10	FX RETN
11	FX SHIELD
12	FX SEND
13	+15V
14	-15V
15	SGND

1	+15V
2	IGND
3	-15V
4	1
5	1
6	1
7	1
8	1
9	1
10	1
11	1
12	1
13	1
14	1
15	1

