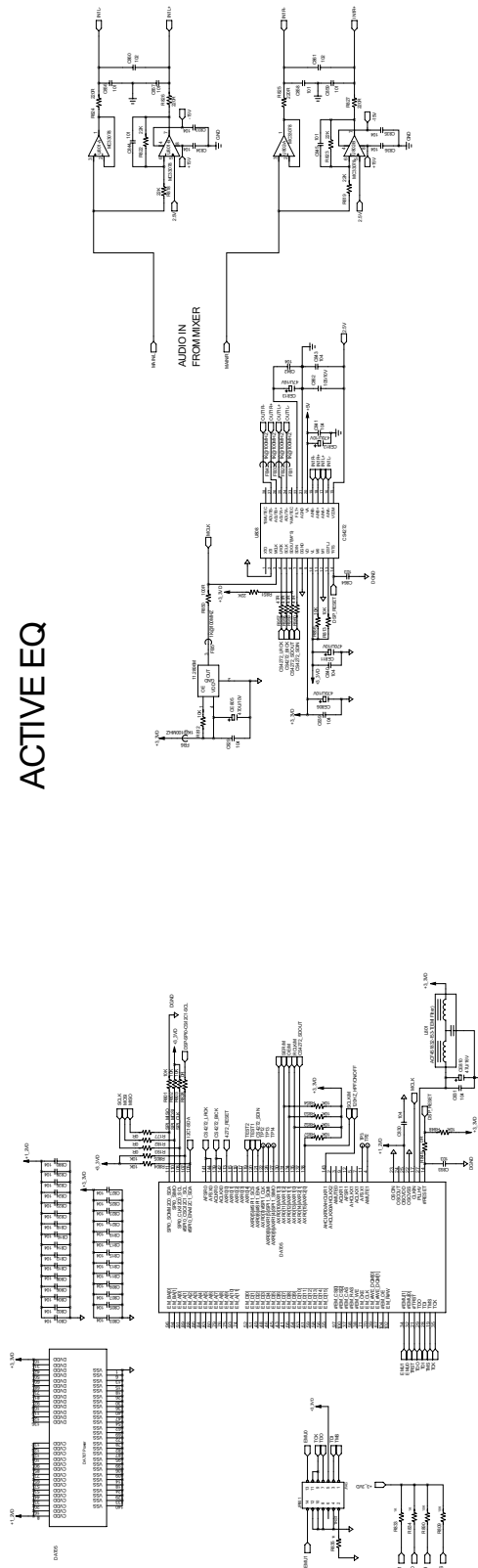
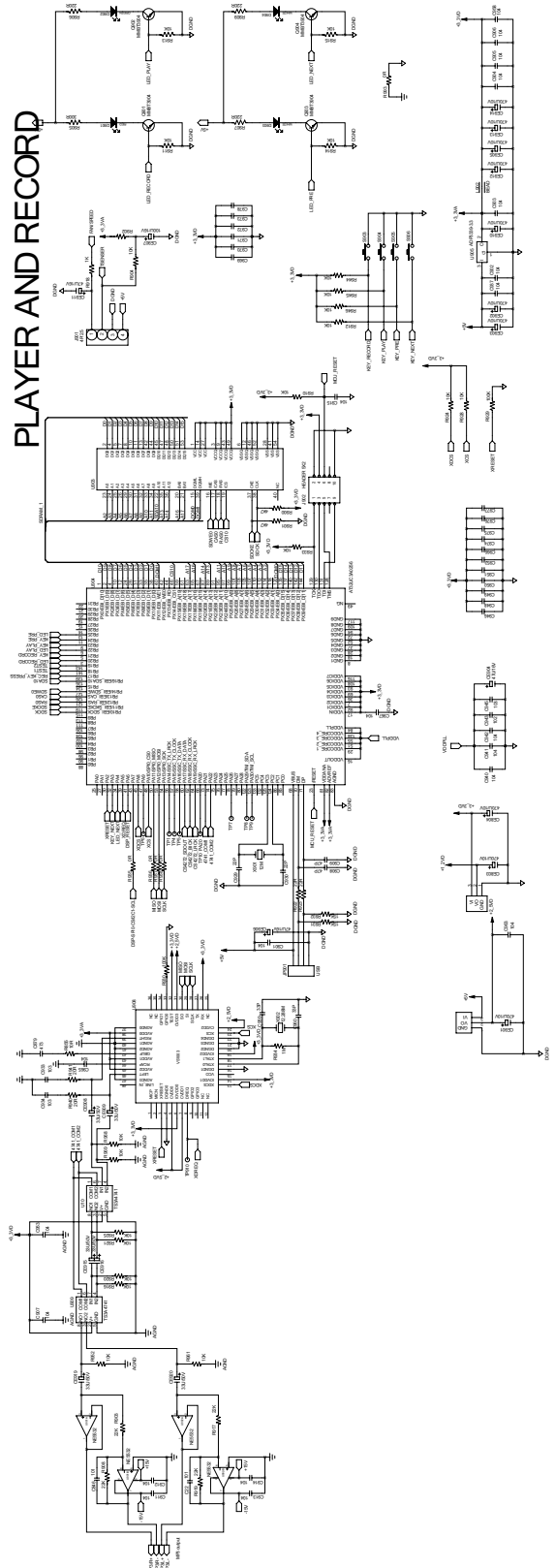


MixerDisplay

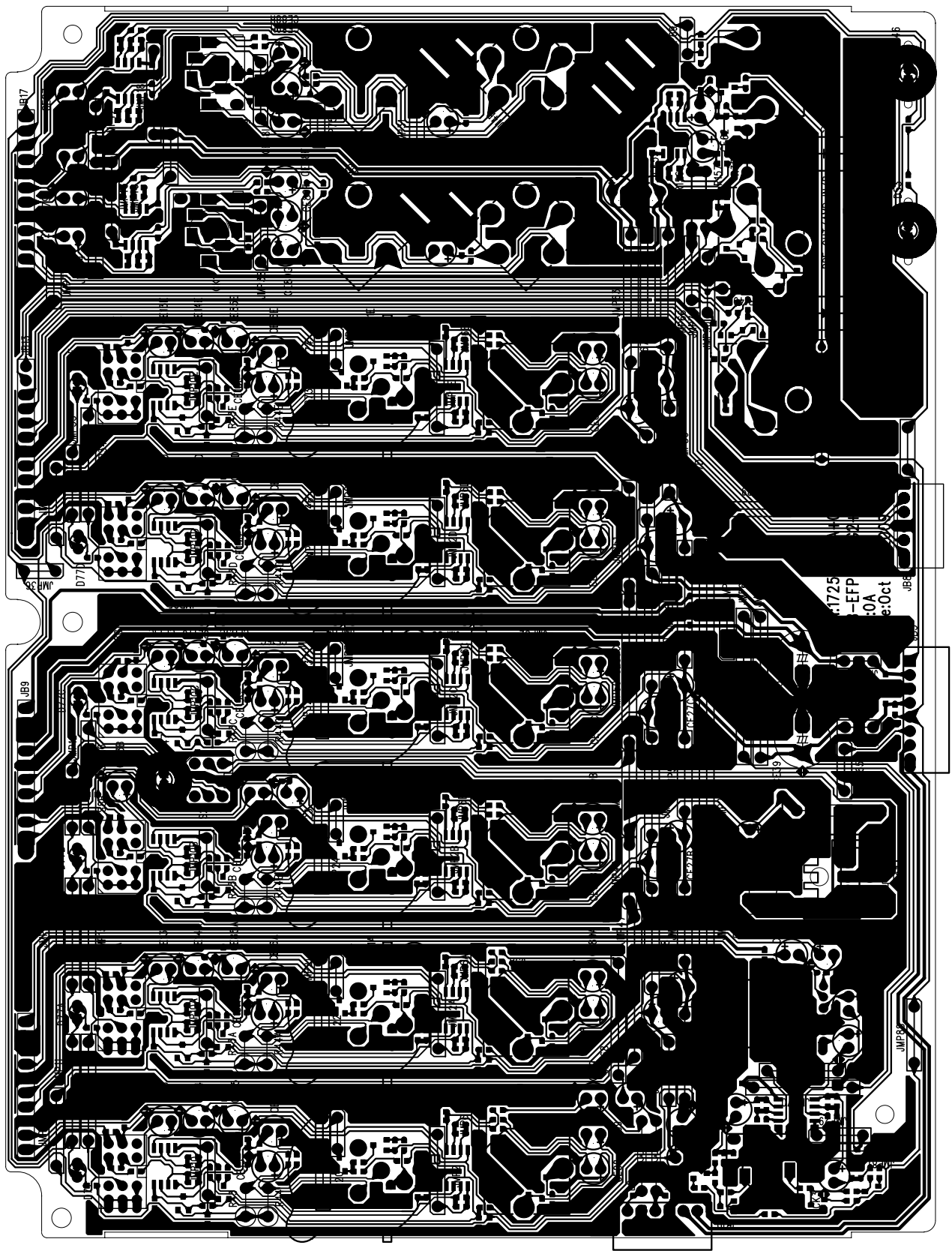
ACTIVE EQ



PLAYER AND RECORD

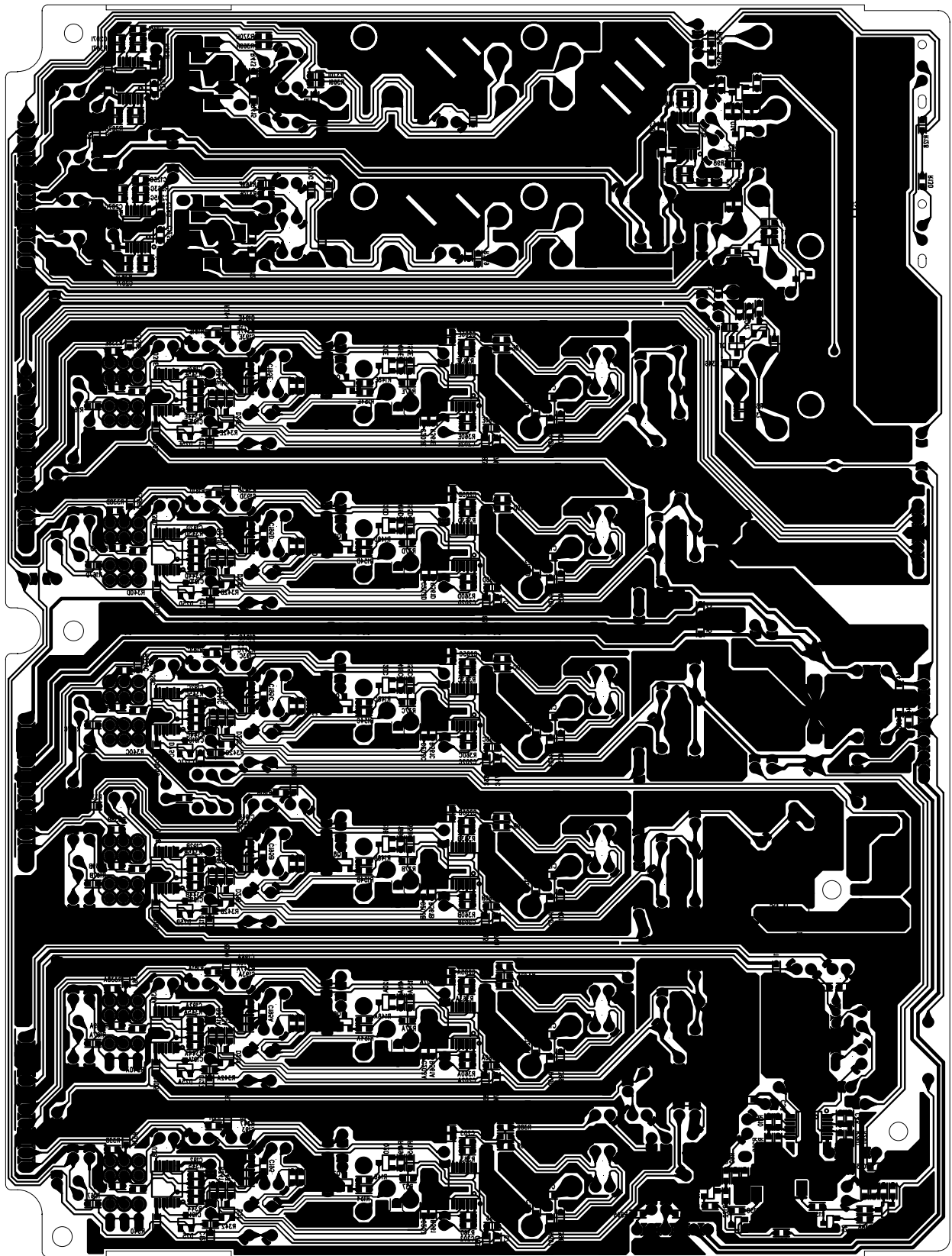


Fender **PASSPORT**
Input & Mixer Schematic diagram



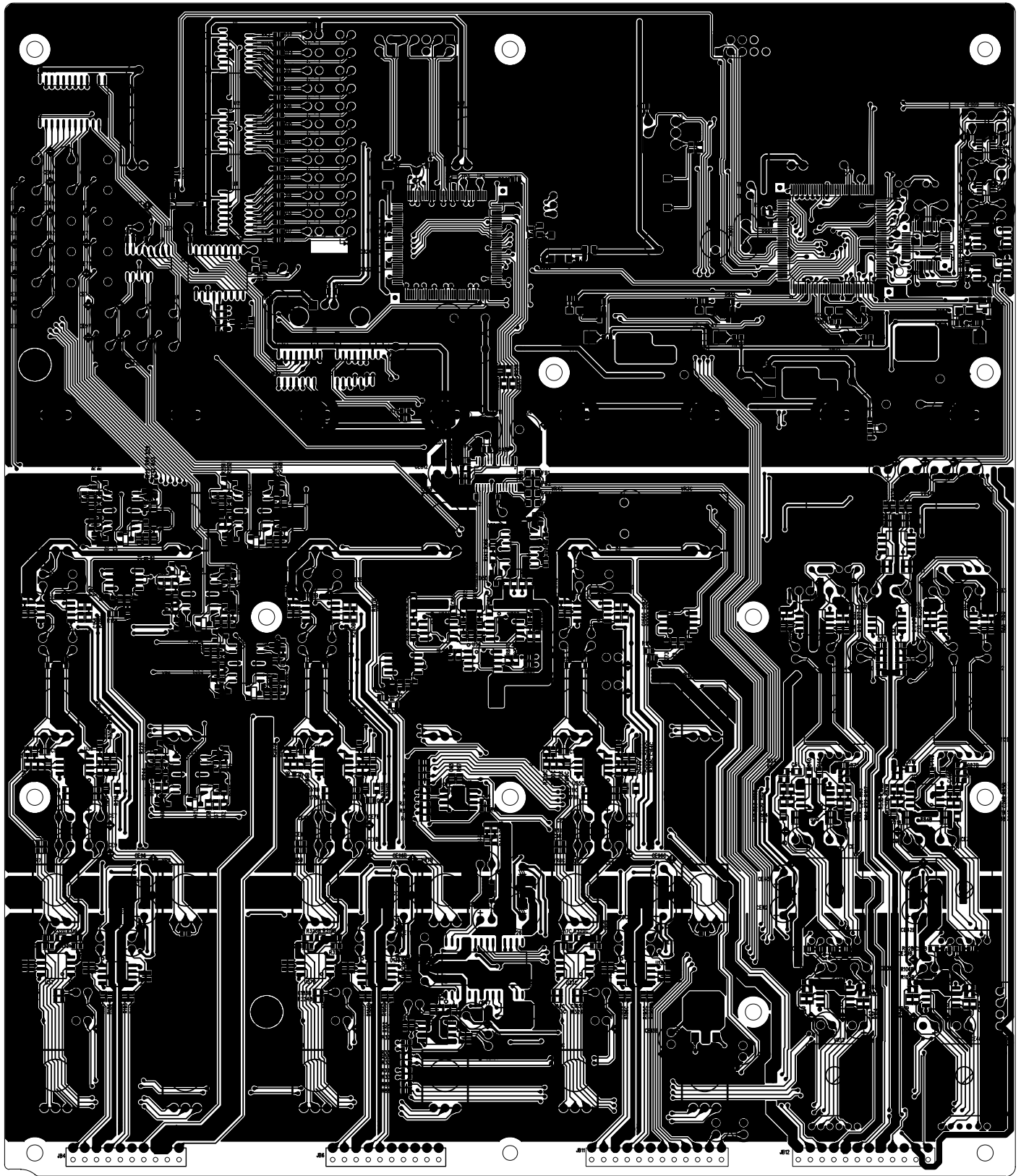
Input PCB top side

Fender PASSPORT
Input PCB



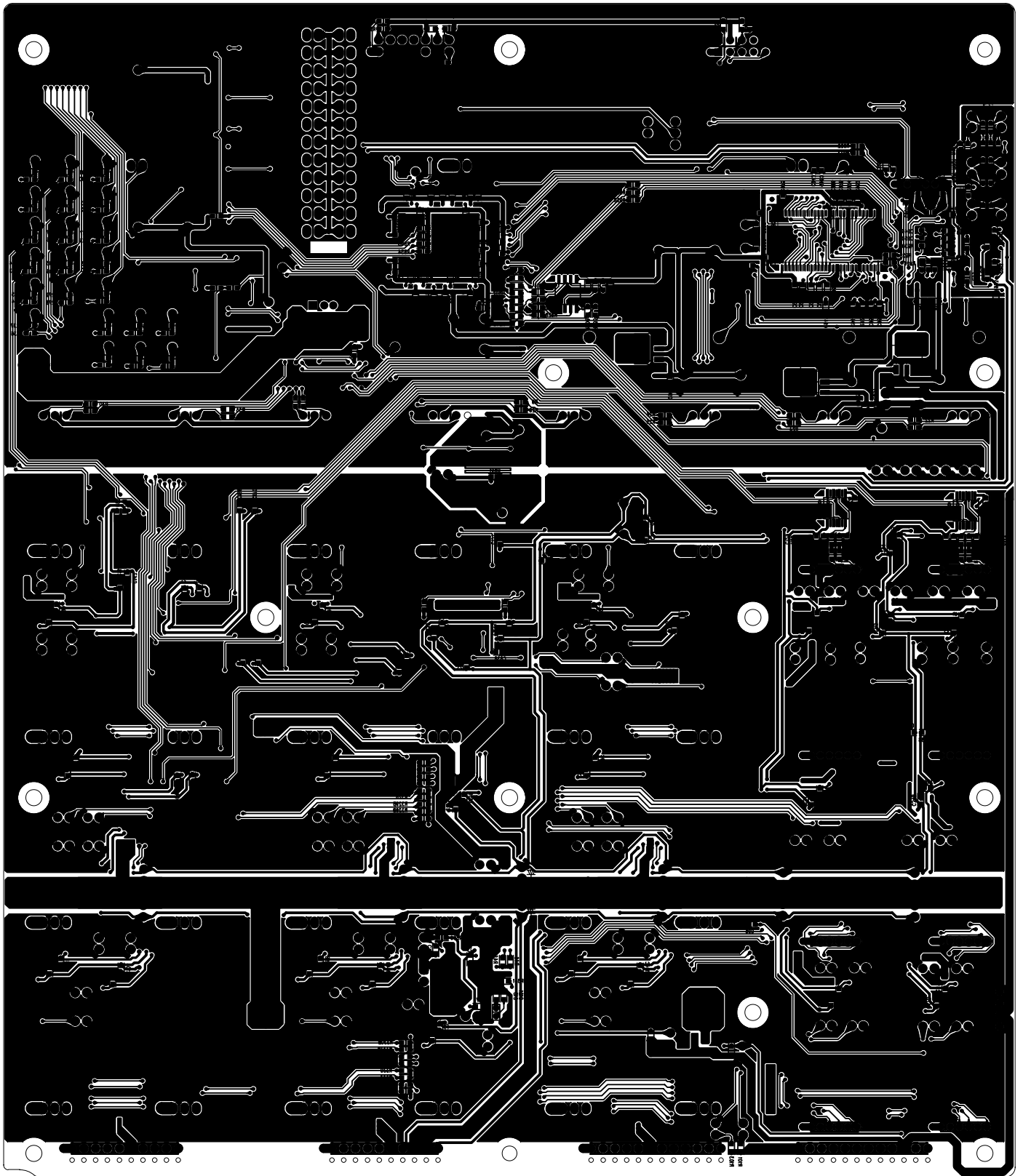
Input PCB bottom side

Fender PASSPORT
Input PCB



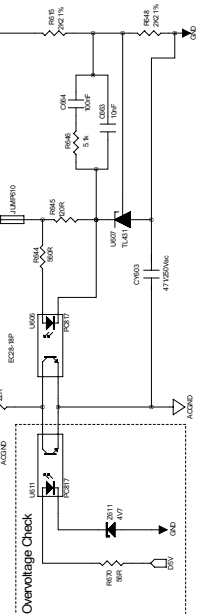
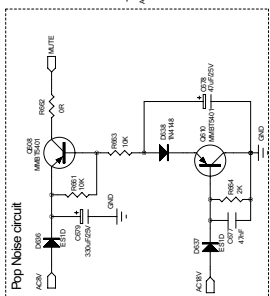
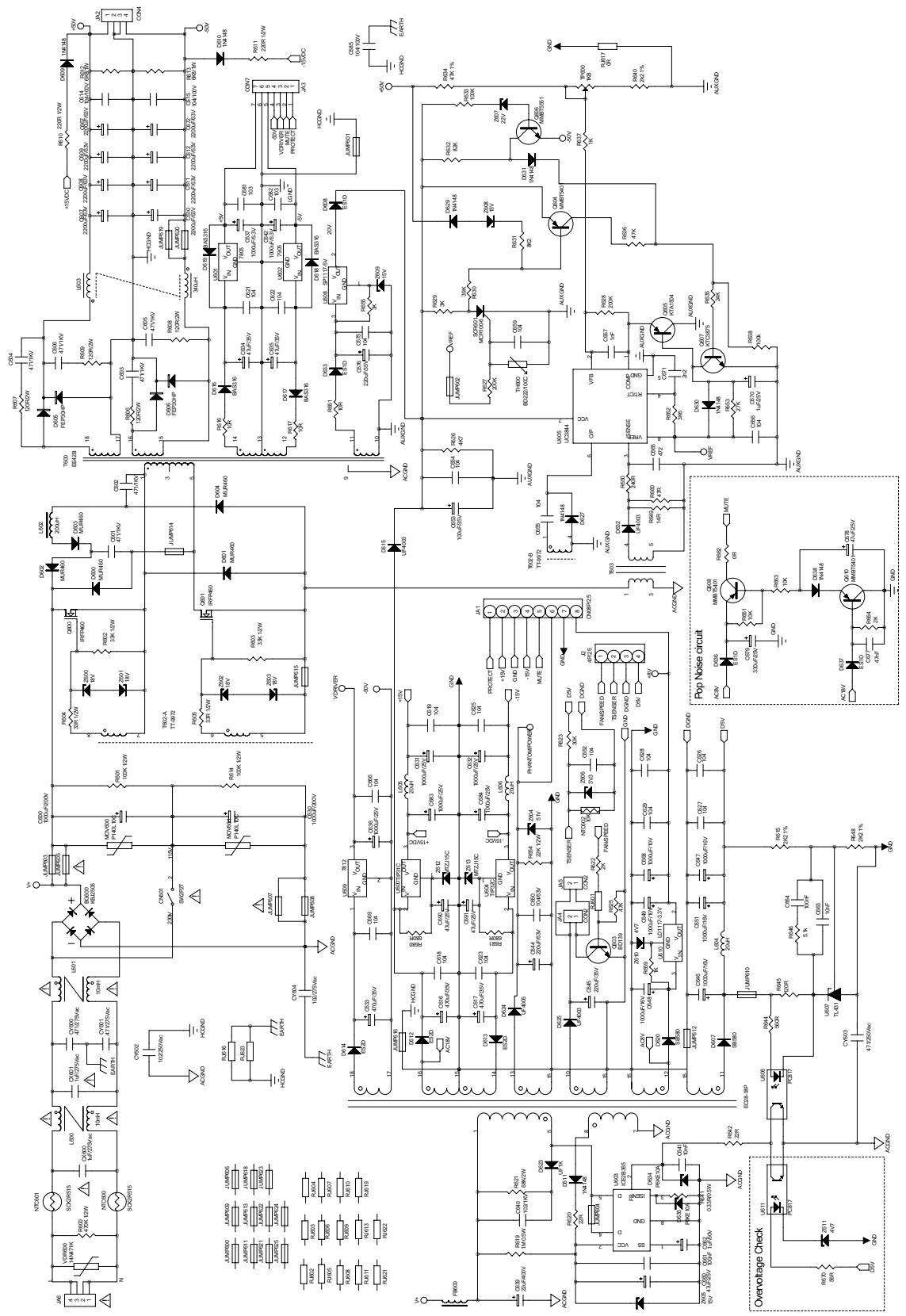
Mixer PCB top side

Fender PASSPORT
Mixer PCB



Mixer PCB bottom side

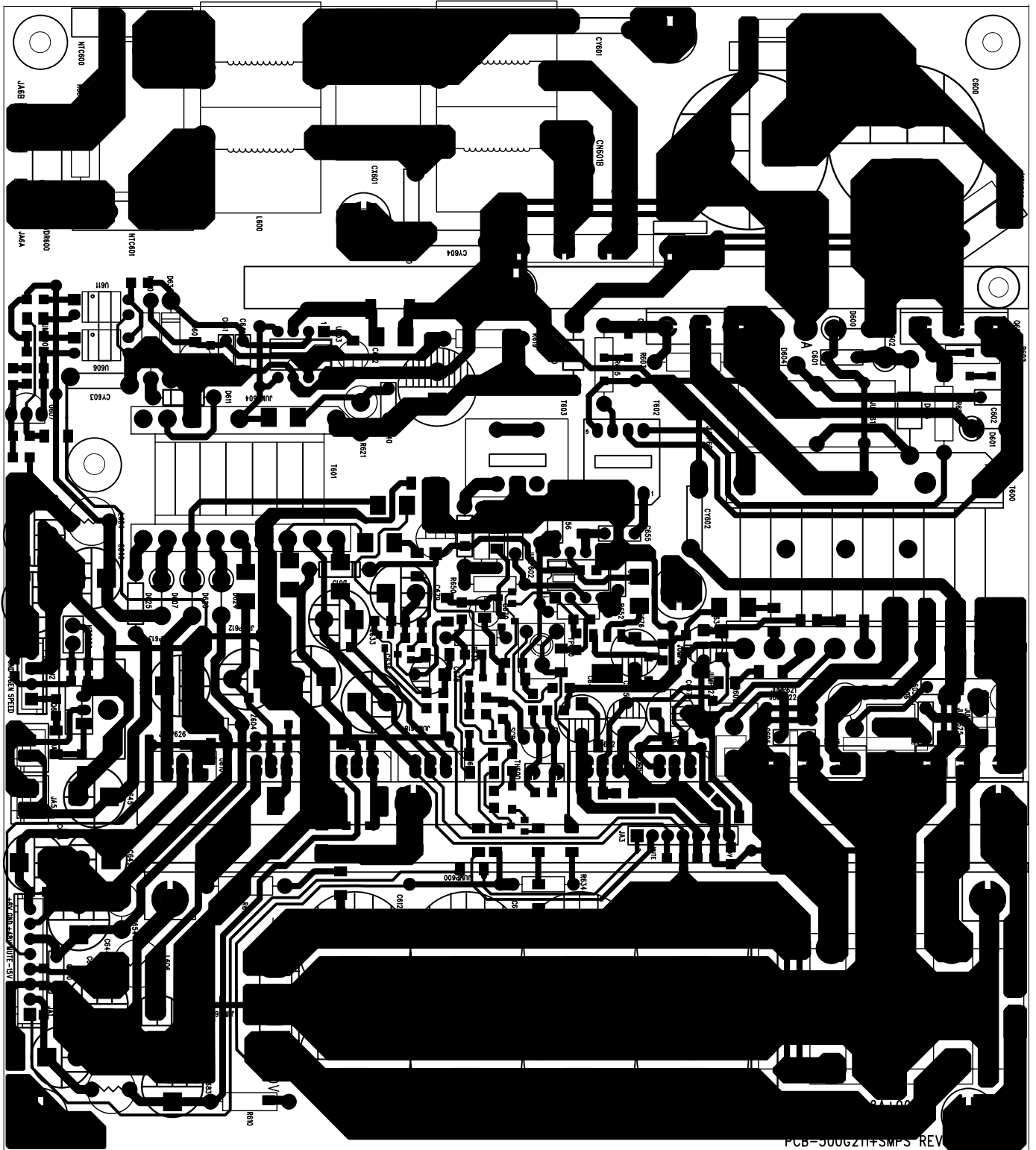
Fender **PASSPORT**
Mixer PCB



J1M001	J1M002	J1M003	J1M004	J1M005	J1M006	J1M007	J1M008	J1M009	J1M010	J1M011	J1M012
J1M013	J1M014	J1M015	J1M016	J1M017	J1M018	J1M019	J1M020	J1M021	J1M022	J1M023	J1M024
J1M025	J1M026	J1M027	J1M028	J1M029	J1M030	J1M031	J1M032	J1M033	J1M034	J1M035	J1M036
J1M037	J1M038	J1M039	J1M040	J1M041	J1M042	J1M043	J1M044	J1M045	J1M046	J1M047	J1M048

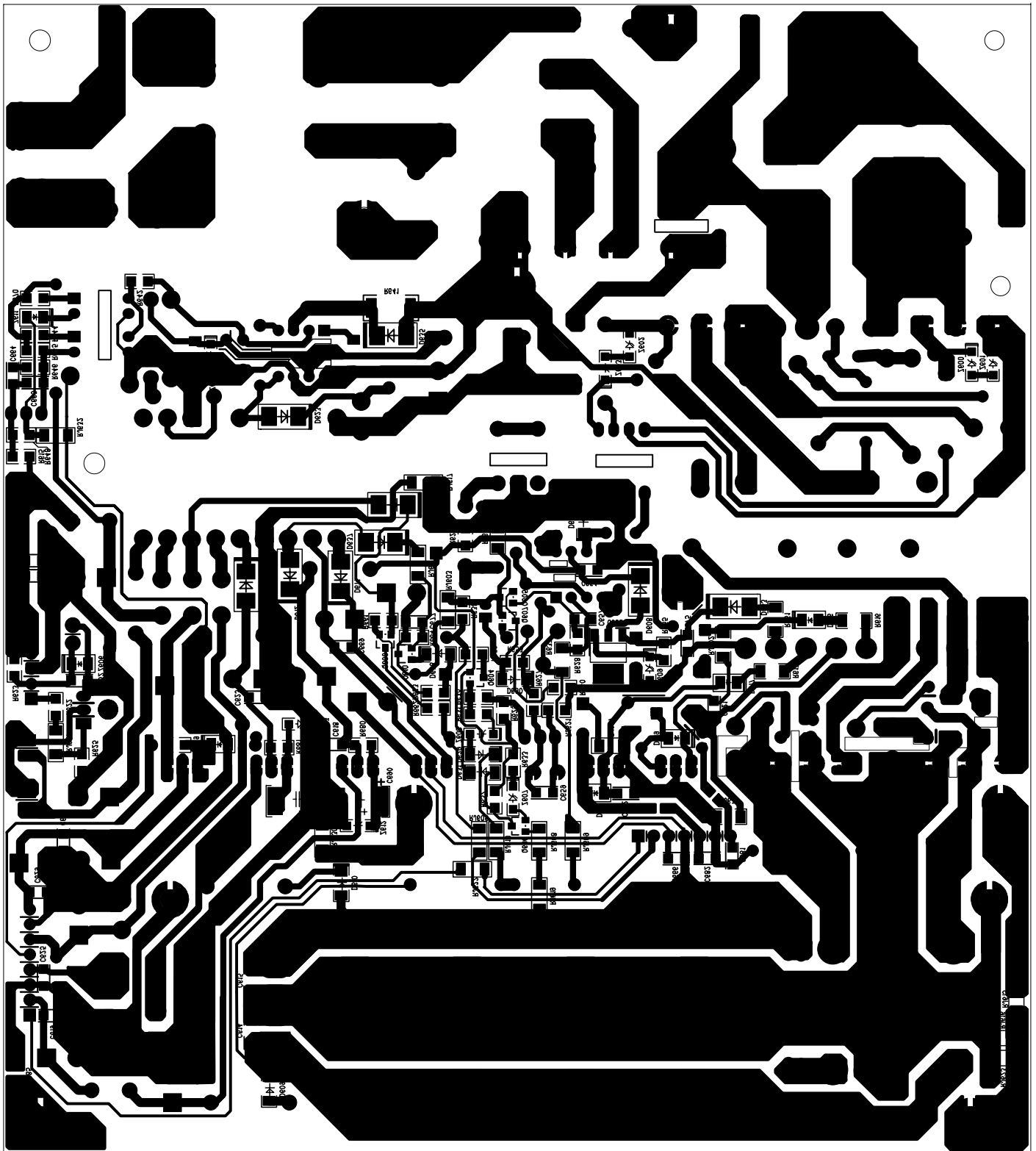
Fender PASSPORT

SMPS Schematic Diagram




SMPS PCB top side

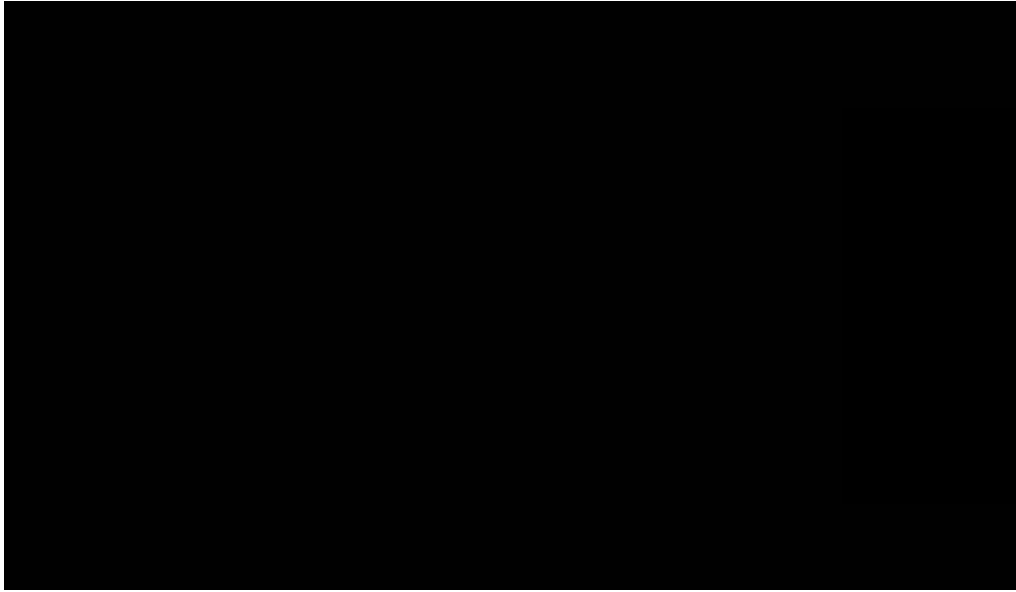
Fender PASSPORT
SMPS PCB



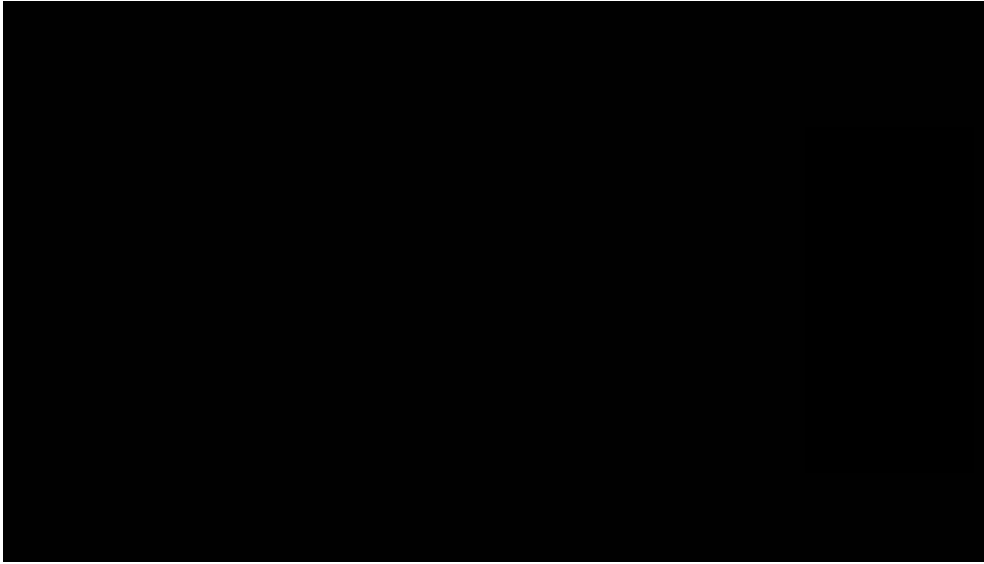
SMPS PCB bottom side

	<p>PASSPORT</p>
	<p>SMPS PCB</p>

TP701



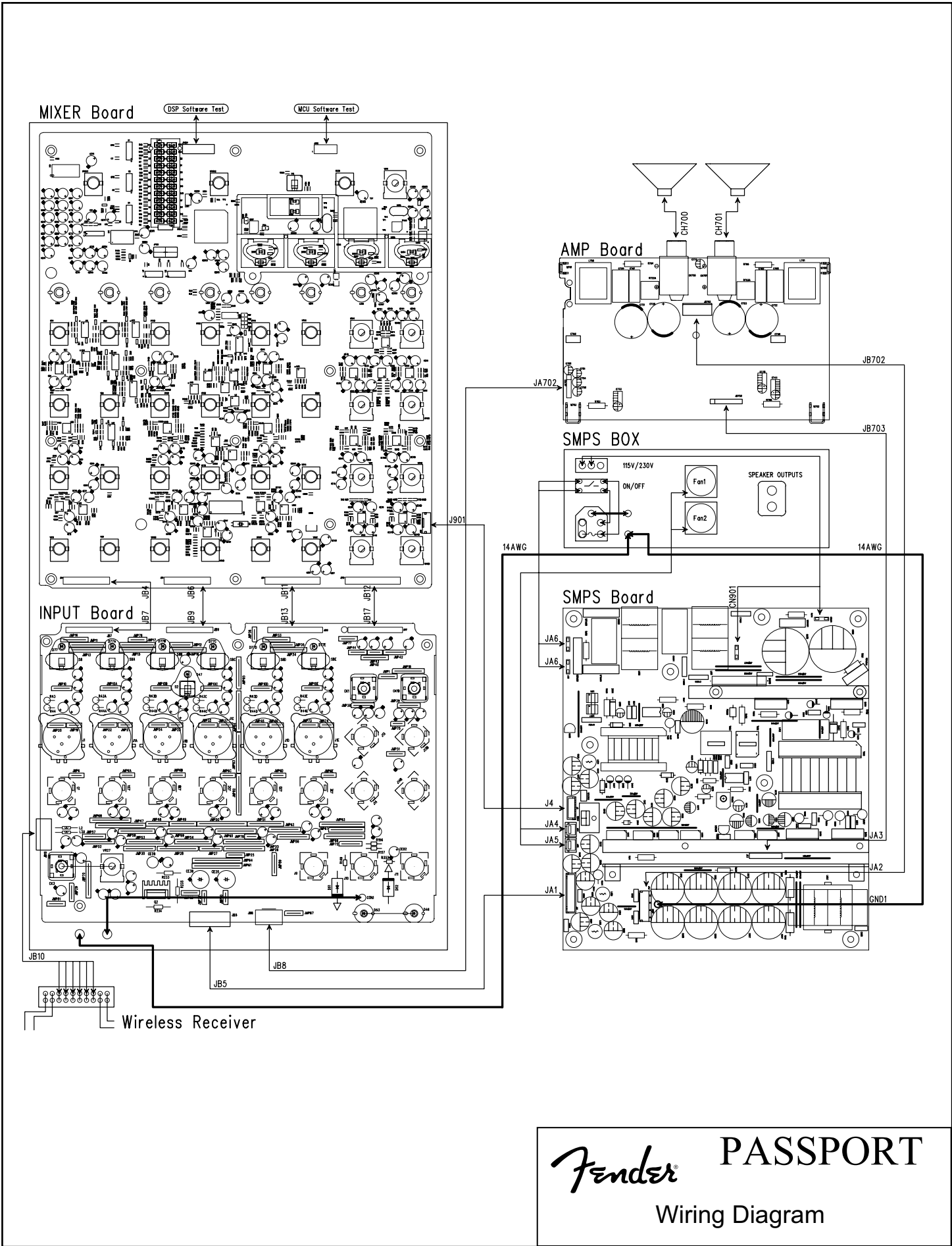
TP702



TP703 +50V

TP704 -50V

Fender PASSPORT
Test Point Information



Fender **PASSPORT**
Wiring Diagram