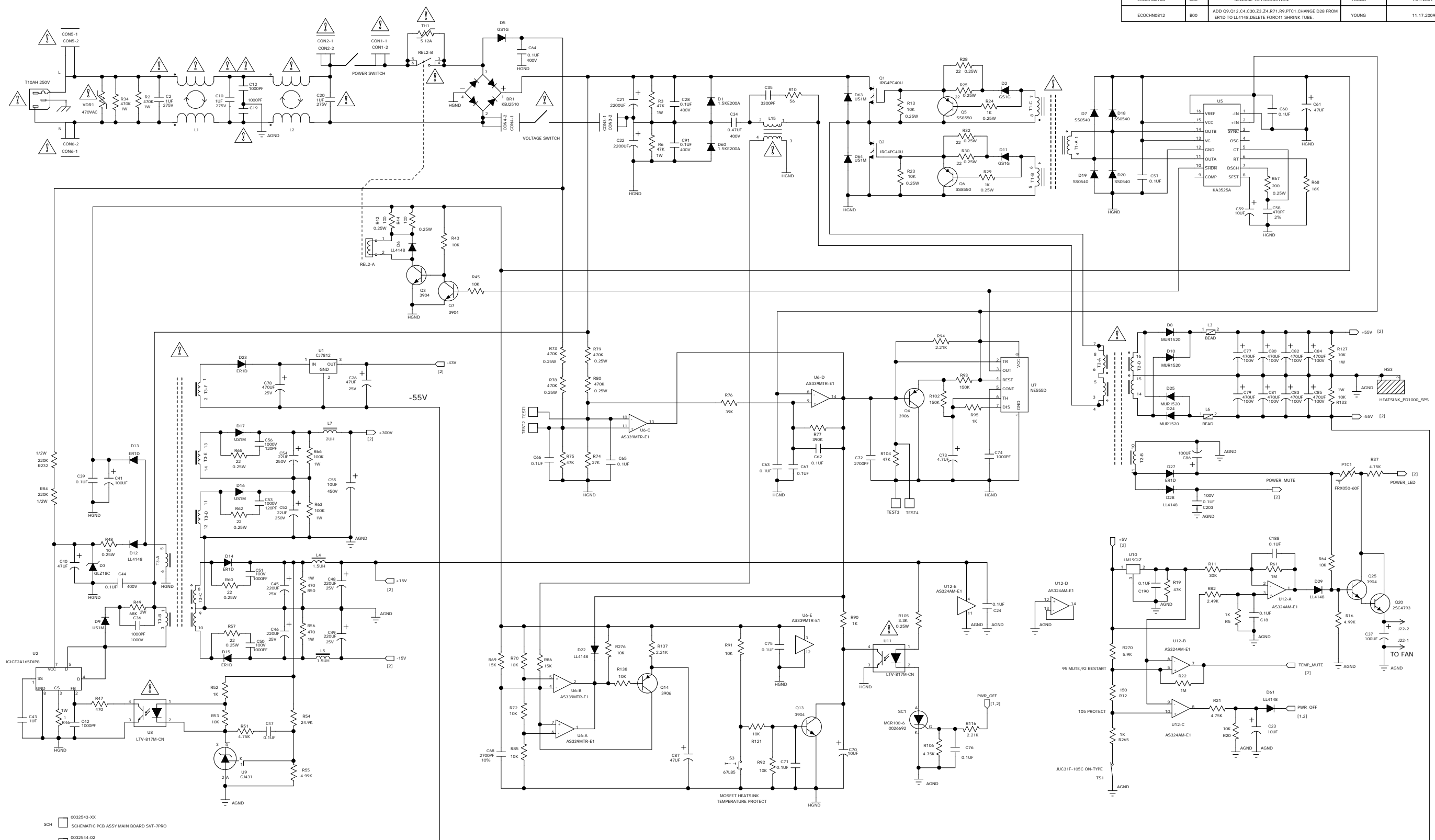
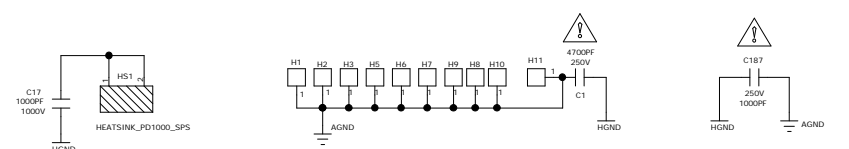


ECO/DSR	REV.	DESCRIPTION	REV. BY	DATE
ECOCHN644	100	RELEASE TO PROTOTYPE	YOUNG	5.12.2009
ECOCHN646	200	RELEASE TO PROTOTYPE	YOUNG	5.13.2009
ECOCHN724	300	RELEASE TO PROTOTYPE	YOUNG	7.12.2009
ECOCHN754	400	CHANGE PART NUMBER OF SC1	YOUNG	7.17.2009
ECOCHN766	400	RELEASE TO PRODUCTION	YOUNG	9.21.2009
ECOCHN812	500	ADD ON Q12,C4,C30,Z3,Z4,R71,R9,PTC1 CHANGE D28 FROM ER1D TO LL4148,DELETE FORC41 SHRINK TUBE.	YOUNG	11.17.2009



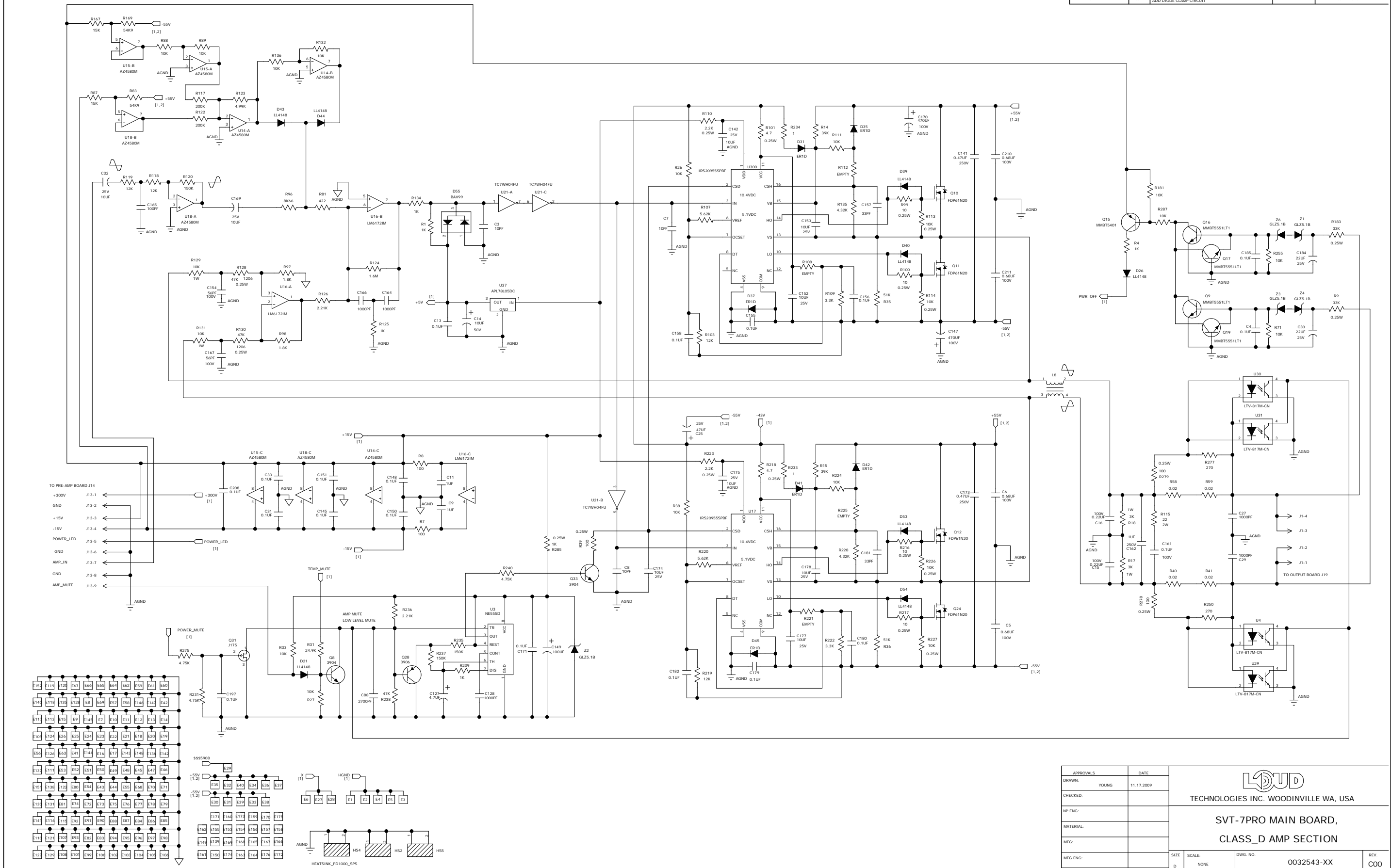
- 0032543-XX SCHEMATIC PCB ASSY MAIN BOARD SVT-7PRO
- 0032544-02 PCB FAB FR4 DOUBLE 1 OZ 1.6MM SVT-7PRO MAIN BOARD
- 0032291 SHRINK TUBE 18X40MM
- 0032291 SHRINK TUBE 18X40MM
- 0025312 WIRE JUMPER 20AWG 60MM




APPROVALS		DATE
DRAWN:	YOUNG	11.17.2009
CHECKED:		
MP ENG:		
MATERIAL:		
MFG:		
MFG ENG:		
ISSUED:		

LOUD TECHNOLOGIES INC. WOODINVILLE WA. USA	
SVT-7PRO MAIN BOARD, POWER SUPPLY SECTION	
SIZE: D	SCALE: NONE
DWG. NO. 0032543-XX	REV. C00
DWG. FILE:	SHEET 1 OF 2

ECO/DSR	REV.	DESCRIPTION	REV. BY:	DATE
ECOCHN0694	100	RELEASE TO PROTOTYPE	YOUNG	5.12.2009
ECOCHN0698	200	RELEASE TO PROTOTYPE	YOUNG	5.13.2009
ECOCHN0724	300	RELEASE TO PROTOTYPE	YOUNG	7.12.2009
ECOCHN0754	400	CHANGE PART NUMBER OF SC1	YOUNG	7.17.2009
ECOCHN0766	ADD	RELEASE TO PRODUCTION	YOUNG	9.21.2009
ECOCHN0812	800	ADD OP Q12-C4, C30, Z3, Z4, R71, R9, PFC1, CHANGE D28 FROM ER10 TO LL4148 DELETE FORM C1 SHRINK TUBE	YOUNG	11.17.2009
ECOWD12497	800	REMOVE OPTOCOUPLER CIRCUIT ADD DIODE CLAMP CIRCUIT	RMR	05.27.2010



APPROVALS		DATE	
DRAWN:	YOUNG	11.17.2009	
CHECKED:			
MP ENG:			
MATERIAL:			
MFG:			
MFG ENG:			
ISSUED:			



TECHNOLOGIES INC. WOODINVILLE WA, USA

**SVT-7PRO MAIN BOARD,
CLASS_D AMP SECTION**

SIZE:	SCALE:	DWG. NO.:	REV.:
D	NONE	0032543-XX	COO
DWG. FILE:		SHEET 2 OF 2	