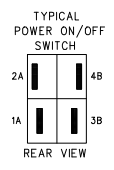
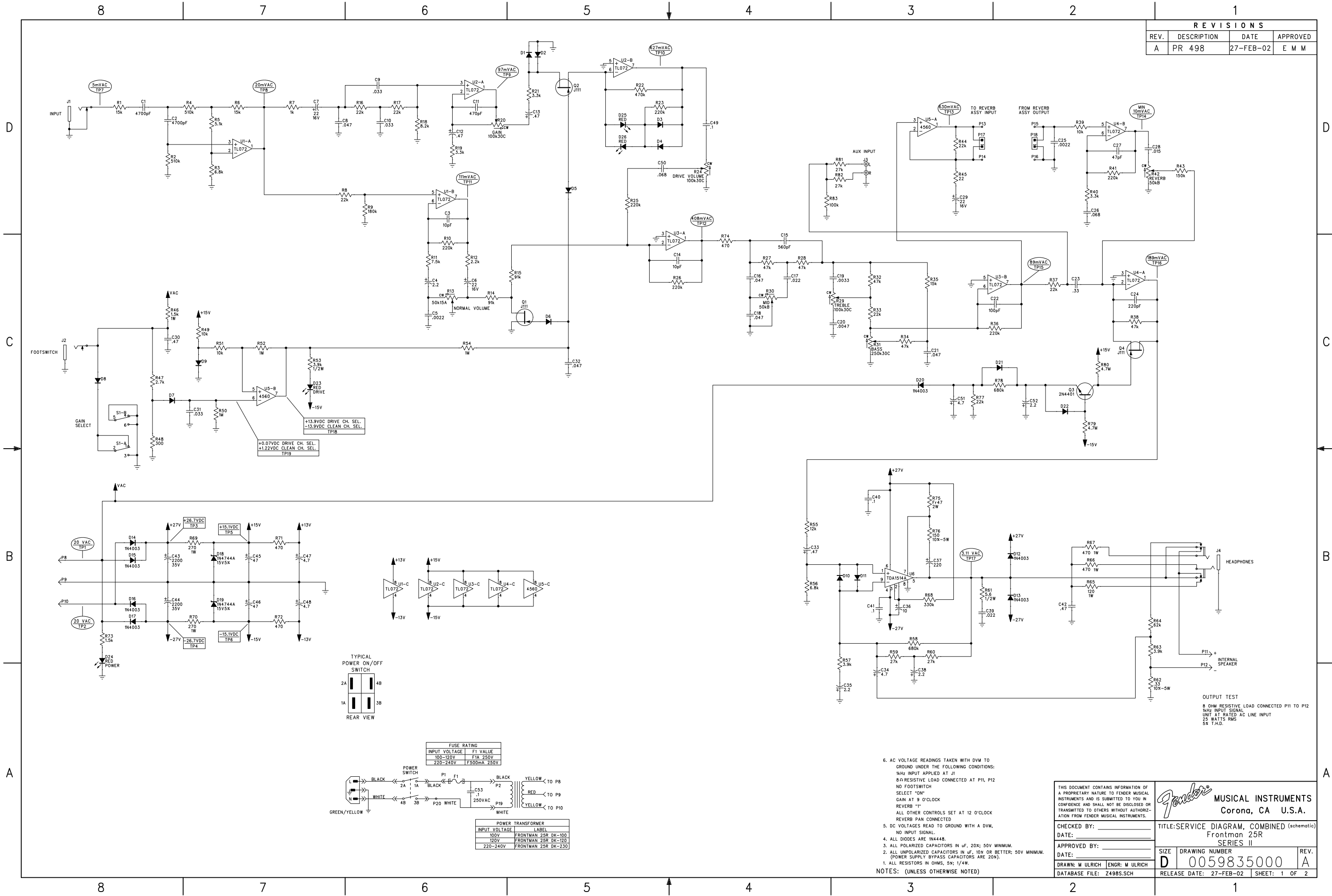


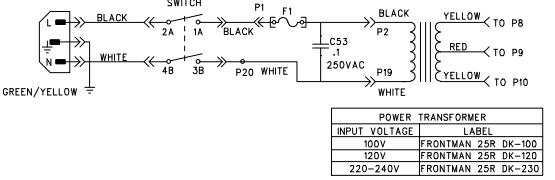
Frontman Import Parts

Part Number	Description
0069993000	Control 50K 15A, spline shaft, Cort
0069994000	Control 100K 30C, spline shaft, Cort
0069995000	Control 250K 30C, spline shaft, Cort
0062769000	CONTROL, 50k, RUMBLE

REVISIONS			
REV.	DESCRIPTION	DATE	APPROVED
A	PR 498	27-FEB-02	E M M



FUSE RATING	
INPUT VOLTAGE	F1 VALUE
100-120V	F1A 250V
220-240V	F500mA 250V



- AC VOLTAGE READINGS TAKEN WITH DVM TO GROUND UNDER THE FOLLOWING CONDITIONS:
1kHz INPUT APPLIED AT J1
8Ω RESISTIVE LOAD CONNECTED AT P11, P12
NO FOOTSWITCH
SELECT "ON"
GAIN AT 9 O'CLOCK
REVERB "1"
ALL OTHER CONTROLS SET AT 12 O'CLOCK
REVERB PAN CONNECTED
 - DC VOLTAGES READ TO GROUND WITH A DVM, NO INPUT SIGNAL.
 - ALL POLARIZED CAPACITORS IN uF; 50V MINIMUM.
 - ALL UNPOLARIZED CAPACITORS IN uF; 10X OR BETTER; 50V MINIMUM. (POWER SUPPLY BYPASS CAPACITORS ARE 20X).
 - ALL RESISTORS IN OHMS, 5%; 1/4W.
- NOTES: (UNLESS OTHERWISE NOTED)

THIS DOCUMENT CONTAINS INFORMATION OF A PROPRIETARY NATURE TO FENDER MUSICAL INSTRUMENTS AND IS SUBMITTED TO YOU IN CONFIDENCE AND SHALL NOT BE DISCLOSED OR TRANSMITTED TO OTHERS WITHOUT AUTHORIZATION FROM FENDER MUSICAL INSTRUMENTS.

Fender MUSICAL INSTRUMENTS
Corona, CA U.S.A.

CHECKED BY: _____ TITLE: SERVICE DIAGRAM, COMBINED (schematic)
DATE: _____ FRONTMAN 25R
SERIES II

APPROVED BY: _____ SIZE: _____ DRAWING NUMBER: _____ REV: _____
DATE: _____ D 0059835000 A

DRAWN: M ULRICH ENGR: M ULRICH
DATABASE FILE: Z498S.SCH RELEASE DATE: 27-FEB-02 SHEET: 1 OF 2

OUTPUT TEST
8 OHM RESISTIVE LOAD CONNECTED P11 TO P12
1kHz INPUT SIGNAL
UNIT AT RATED AC LINE INPUT
25 WATTS RMS
5X T.H.D.

8

7

6

5

4

3

2

1

REVISIONS			
REV.	DESCRIPTION	DATE	APPROVED
A	PR 498	27-FEB-02	E M M

D

D

C

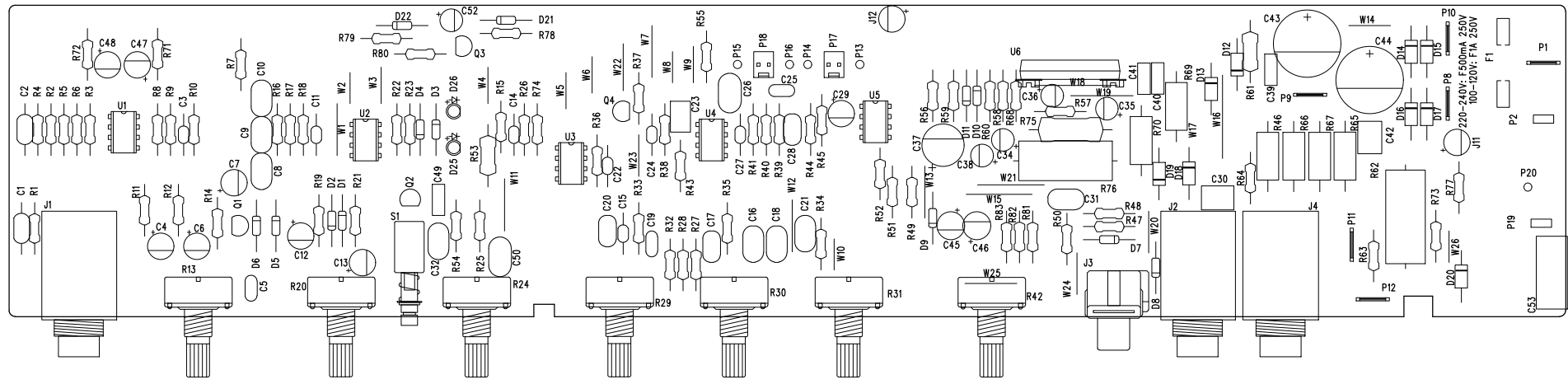
C

B


B

A

A



NOTES: (UNLESS OTHERWISE NOTED)

THIS DOCUMENT CONTAINS INFORMATION OF A PROPRIETARY NATURE TO FENDER MUSICAL INSTRUMENTS AND IS SUBMITTED TO YOU IN CONFIDENCE AND SHALL NOT BE DISCLOSED OR TRANSMITTED TO OTHERS WITHOUT AUTHORIZATION FROM FENDER MUSICAL INSTRUMENTS.		 MUSICAL INSTRUMENTS Corona, CA U.S.A.	
CHECKED BY: _____	TITLE: SERVICE DIAGRAM, COMBINED (PCB assy)		
DATE: _____	FRONTMAN 25R		
APPROVED BY: _____	SERIES II		
DATE: _____	SIZE	DRAWING NUMBER	REV.
DRAWN: M ULRICH	C	0059835000	A
ENGR: M ULRICH	RELEASE DATE: 27-FEB-02	SHEET 2 OF 2	
DATABASE FILE: Z498P.PCB			

8

7

6

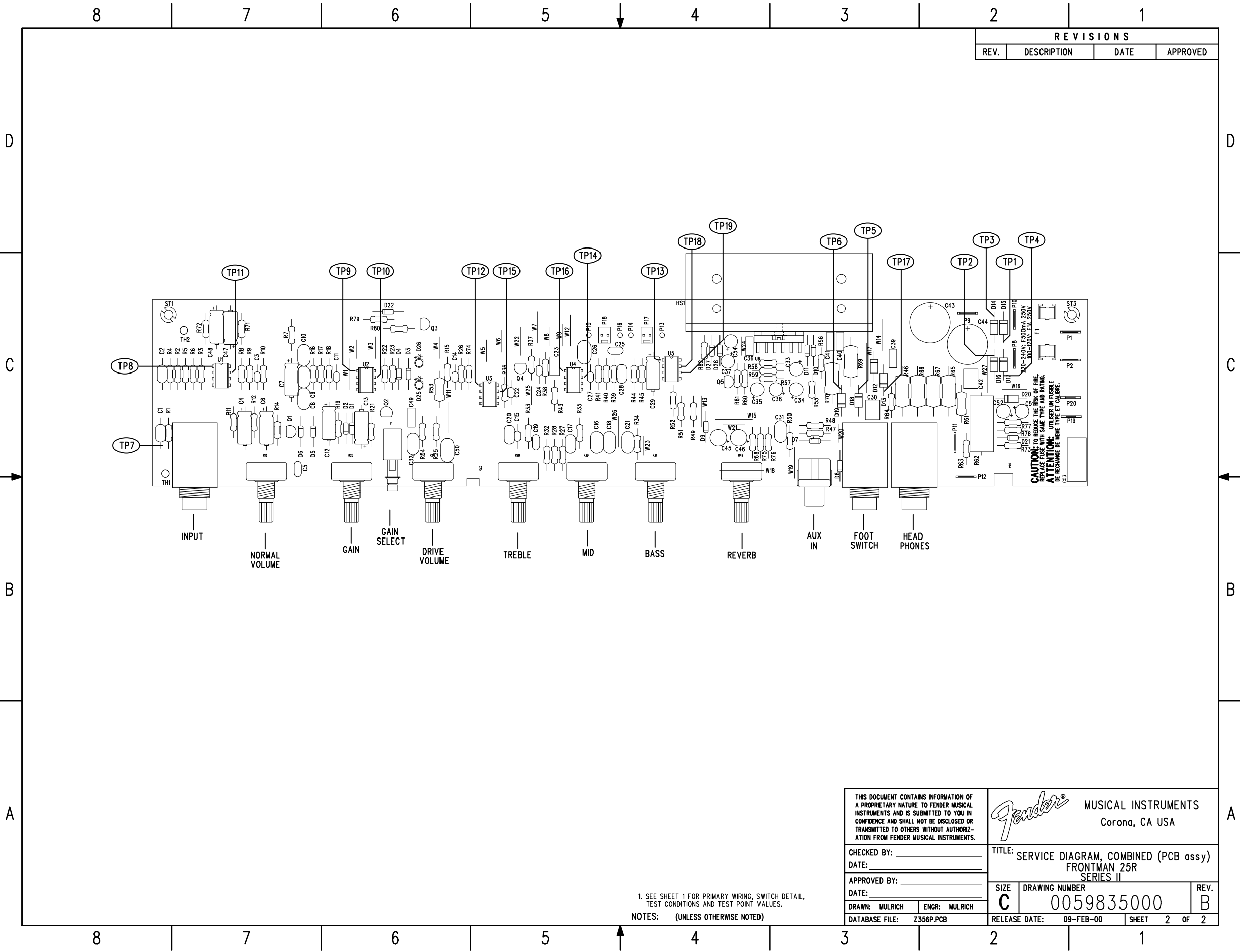
5

4

3

2


1



REVISIONS			
REV.	DESCRIPTION	DATE	APPROVED

CAUTION: TO REDUCE THE RISK OF FIRE, REPLACE FUSE WITH SAME TYPE AND RATING.
ATTENTION: UTILISER UN FUSIBLE DE RECHANGE DE MEME TYPE ET CALIBRE.

1. SEE SHEET 1 FOR PRIMARY WIRING, SWITCH DETAIL, TEST CONDITIONS AND TEST POINT VALUES.
 NOTES: (UNLESS OTHERWISE NOTED)

THIS DOCUMENT CONTAINS INFORMATION OF A PROPRIETARY NATURE TO FENDER MUSICAL INSTRUMENTS AND IS SUBMITTED TO YOU IN CONFIDENCE AND SHALL NOT BE DISCLOSED OR TRANSMITTED TO OTHERS WITHOUT AUTHORIZATION FROM FENDER MUSICAL INSTRUMENTS.		 MUSICAL INSTRUMENTS Corona, CA USA	
CHECKED BY: _____	DATE: _____	TITLE: SERVICE DIAGRAM, COMBINED (PCB assy) FRONTMAN 25R SERIES II	
APPROVED BY: _____	DATE: _____	SIZE: C	DRAWING NUMBER: 0059835000
DRAWN: MULRICH	ENGR: MULRICH	REV. B	
DATABASE FILE: Z356P.PCB	RELEASE DATE: 09-FEB-00	SHEET 2 OF 2	