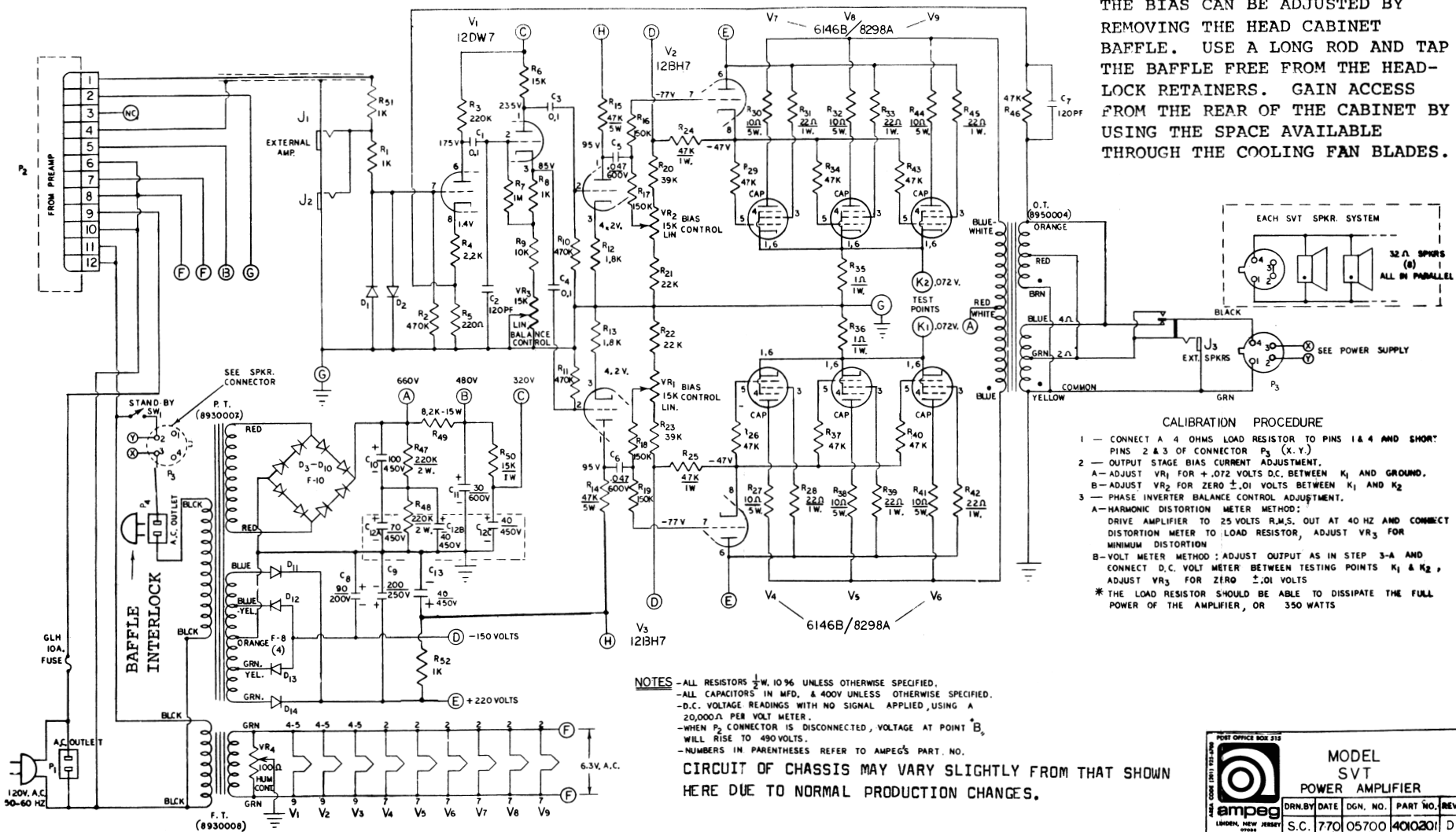
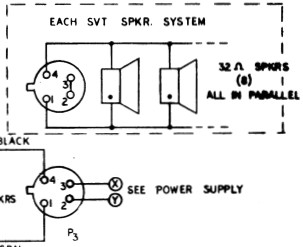


SVT POWER AMP (REV D)

Ampeg



THE BIAS CAN BE ADJUSTED BY REMOVING THE HEAD CABINET BAFFLE. USE A LONG ROD AND TAP THE BAFFLE FREE FROM THE HEAD-LOCK RETAINERS. GAIN ACCESS FROM THE REAR OF THE CABINET BY USING THE SPACE AVAILABLE THROUGH THE COOLING FAN BLADES.



- ### CALIBRATION PROCEDURE
- CONNECT A 4 OHMS LOAD RESISTOR TO PINS 1 & 4 AND SHORT PINS 2 & 3 OF CONNECTOR P₃ (X.Y.)
 - OUTPUT STAGE BIAS CURRENT ADJUSTMENT.
A-ADJUST VR₁ FOR +.072 VOLTS D.C. BETWEEN K₁ AND GROUND.
B-ADJUST VR₂ FOR ZERO ±.01 VOLTS BETWEEN K₁ AND K₂
 - PHASE INVERTER BALANCE CONTROL ADJUSTMENT.
A-HARMONIC DISTORTION METER METHOD:
DRIVE AMPLIFIER TO 25 VOLTS R.M.S. OUT AT 40 HZ AND CONNECT DISTORTION METER TO LOAD RESISTOR, ADJUST VR₃ FOR MINIMUM DISTORTION
B-VOLT METER METHOD: ADJUST OUTPUT AS IN STEP 3-A AND CONNECT D.C. VOLT METER BETWEEN TESTING POINTS K₁ & K₂, ADJUST VR₃ FOR ZERO ±.01 VOLTS
* THE LOAD RESISTOR SHOULD BE ABLE TO DISSIPATE THE FULL POWER OF THE AMPLIFIER, OR 350 WATTS

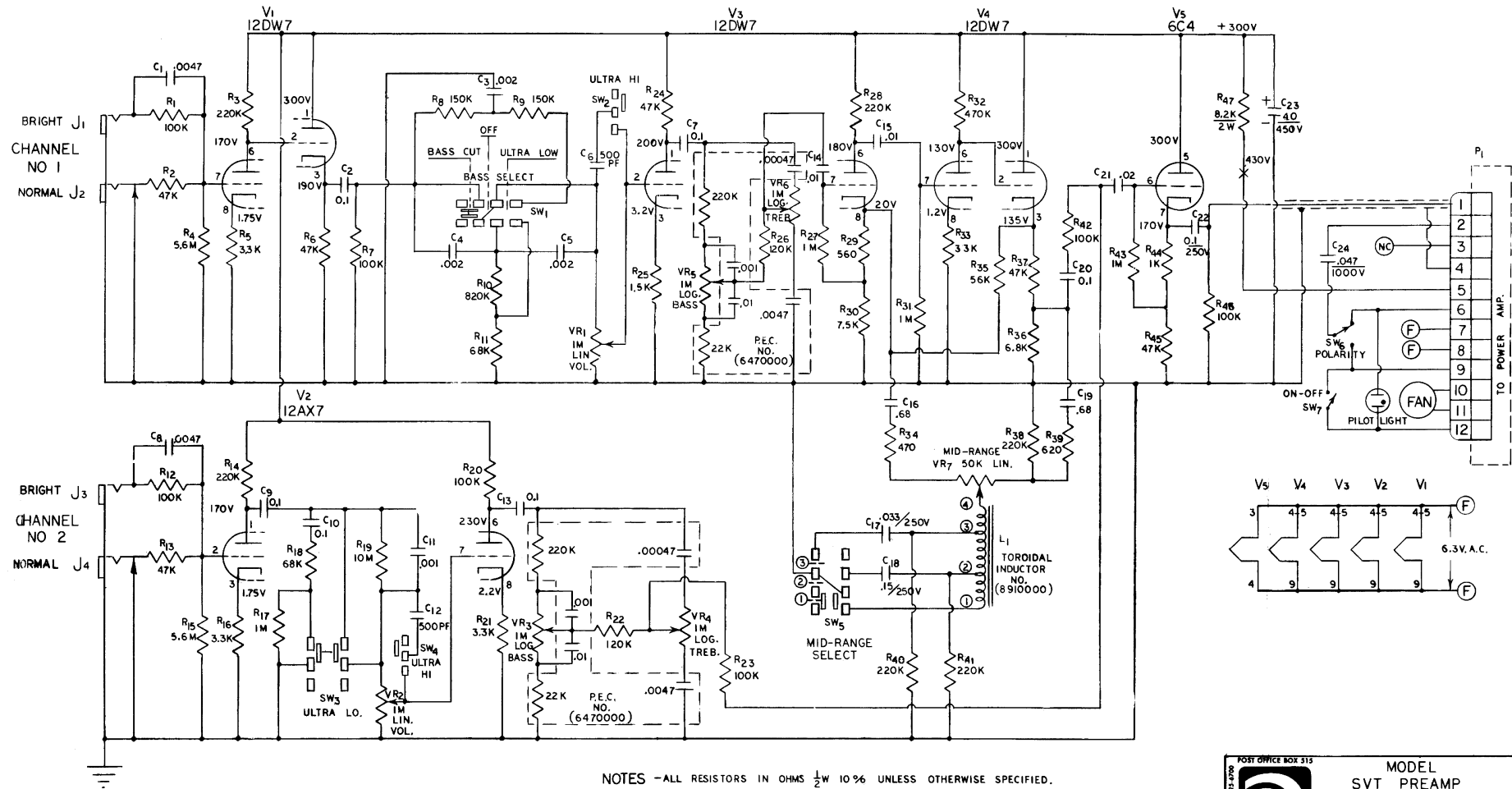
NOTES - ALL RESISTORS 1/2 W. 10% UNLESS OTHERWISE SPECIFIED.
- ALL CAPACITORS IN MFD. & 400V UNLESS OTHERWISE SPECIFIED.
- D.C. VOLTAGE READINGS WITH NO SIGNAL APPLIED, USING A 20,000Ω PER VOLT METER.
- WHEN P₃ CONNECTOR IS DISCONNECTED, VOLTAGE AT POINT B₁ WILL RISE TO 490 VOLTS.
- NUMBERS IN PARENTHESES REFER TO AMPEG'S PART NO.

CIRCUIT OF CHASSIS MAY VARY SLIGHTLY FROM THAT SHOWN HERE DUE TO NORMAL PRODUCTION CHANGES.

	MODEL SVT POWER AMPLIFIER		
	DRN. BY	DATE	DGN. NO. PART NO. REV.
S.C. 770 05700		4010201	D

SVT PREAMP

Ampeg



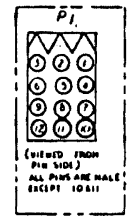
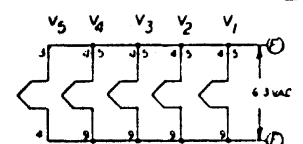
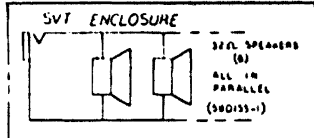
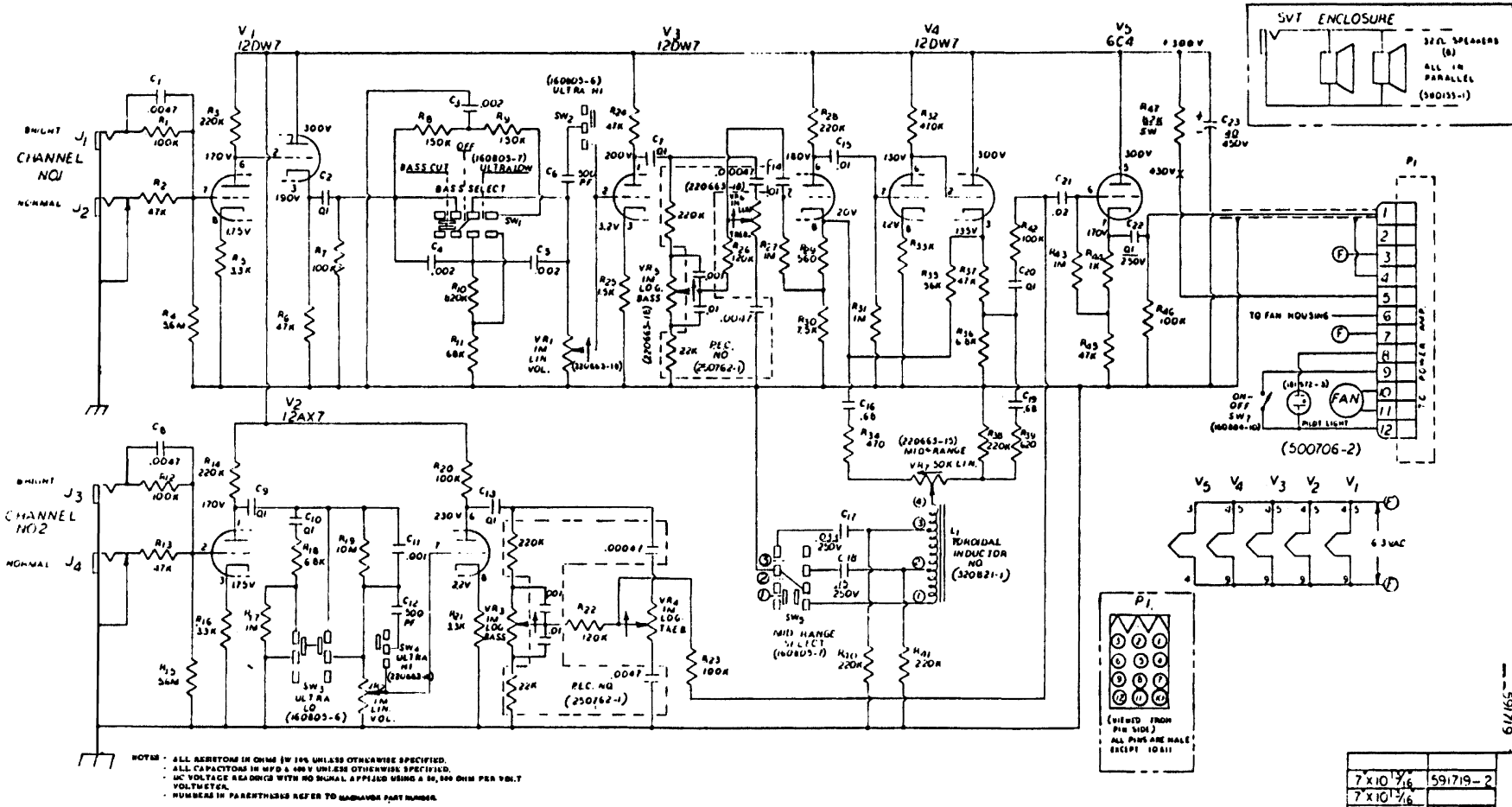
NOTES - ALL RESISTORS IN OHMS $\frac{1}{2}$ W 10% UNLESS OTHERWISE SPECIFIED.
 - ALL CAPACITORS IN MFD & 400V " " " "
 - DC VOLTAGE READINGS WITH NO SIGNAL APPLIED USING A 20,000 Ω PER VOLT VOLTMETER.
 - NUMBERS IN PARENTHESES REFER TO AMPEG'S PART NO.

POST OFFICE BOX 313
 MODEL SVT PREAMP
 U.S. PATENT PENDING

DRN. BY DATE DNG. NO. PART NO. REV.
 S.C. 669 05804 4010204

SVT PREAMP

Ampeg



7 X 10 1/4	591719-2
7 X 10 1/4	
SIZE	PAGE 08

Ampeg is a registered trademark of Ampeg Corporation. SVT is a registered trademark of Ampeg Corporation. All other trademarks are the property of their respective owners.

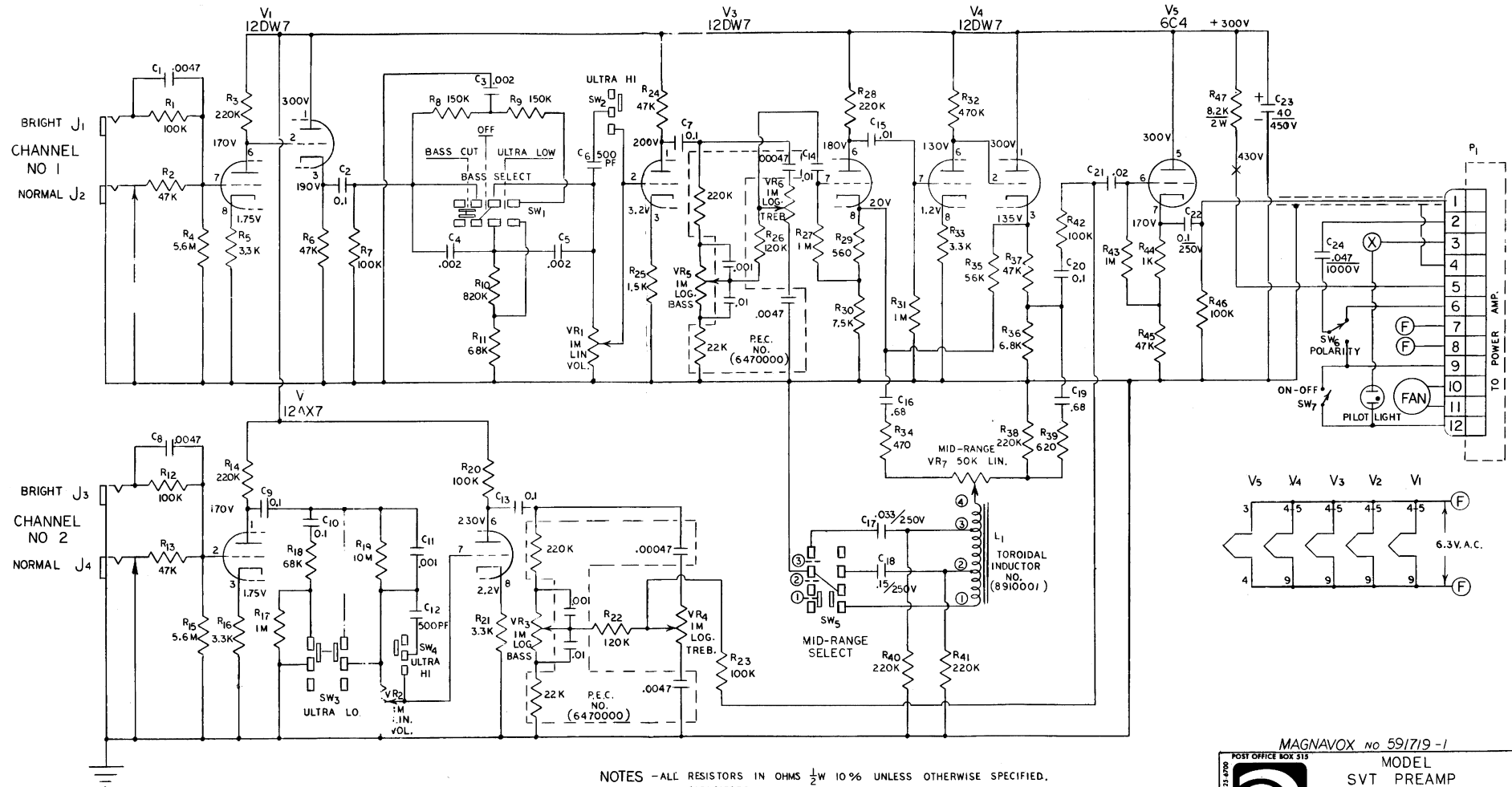
TRAINWRECK CIRCUITS
59 FRETTON ROAD
COLONIA, N. J. 07067
(201) 381-5126

ADDITIONAL SPECIFICATIONS	REVISIONS	DATE
THE AMPIG COMPANY DIVISION OF THE GENERAL ELECTRIC COMPANY 140 WEST 42ND STREET NEW YORK 36, N. Y. 10018		
SVT PREAMP		
THIS MATERIAL IS THE PROPERTY OF AND PROPRIETARY TO THE MANUFACTURER COMPANY AND IS NOT TO BE LOANED, REPRODUCED, COPIED, OR IN ANY MANNER USED IN CONNECTION WITH THE MANUFACTURE OF ANY PRODUCT WITHOUT THE WRITTEN PERMISSION OF THE MANUFACTURER COMPANY. THIS MATERIAL IS TO BE RETURNED TO THE MANUFACTURER COMPANY IN THE ORIGINAL CONDITION AND WITH ALL ORIGINAL MARKINGS.		
		D 591719

6/12/66

SVT PREAMP (REV B)

Ampeg



NOTES - ALL RESISTORS IN OHMS $\frac{1}{2}$ W 10% UNLESS OTHERWISE SPECIFIED.
 - ALL CAPACITORS IN MFD & 400V " " " "
 - DC VOLTAGE READINGS WITH NO SIGNAL APPLIED USING A 20,000 Ω PER VOLT VOLTMETER.
 - NUMBERS IN PARENTHESES REFER TO AMPEG'S PART NO.

MAGNAVOX no 59/719-1

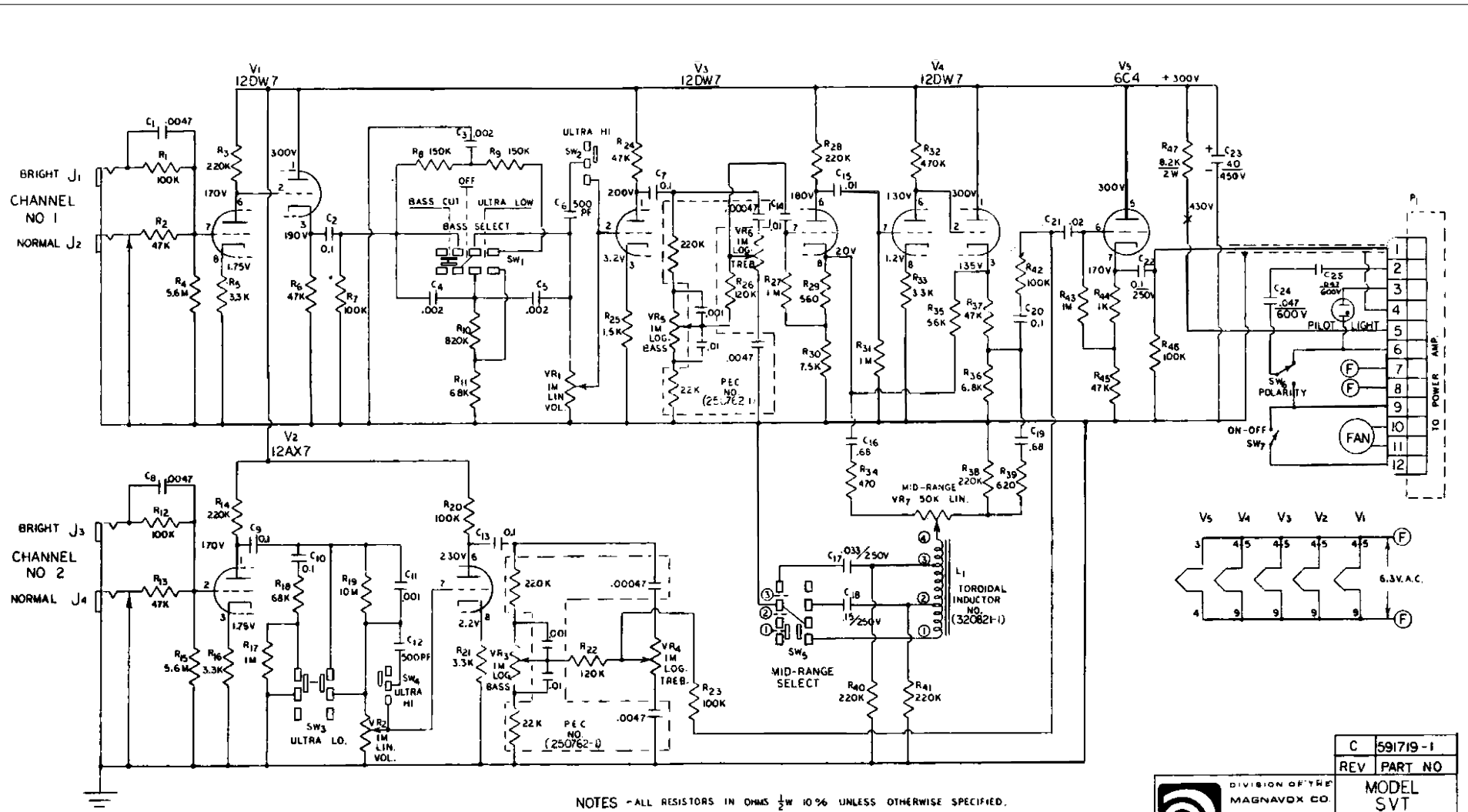
POST OFFICE BOX 513
 MODEL
 SVT PREAMP
 U.S. PATENT PENDING

ampeg
 LINDEN, NEW JERSEY 07036


DRN. BY	DATE	DWG. NO.	PART NO.	REV.
S.C.	669	05804	4010204	B

SVT PREAMP (REV C)

Ampeg

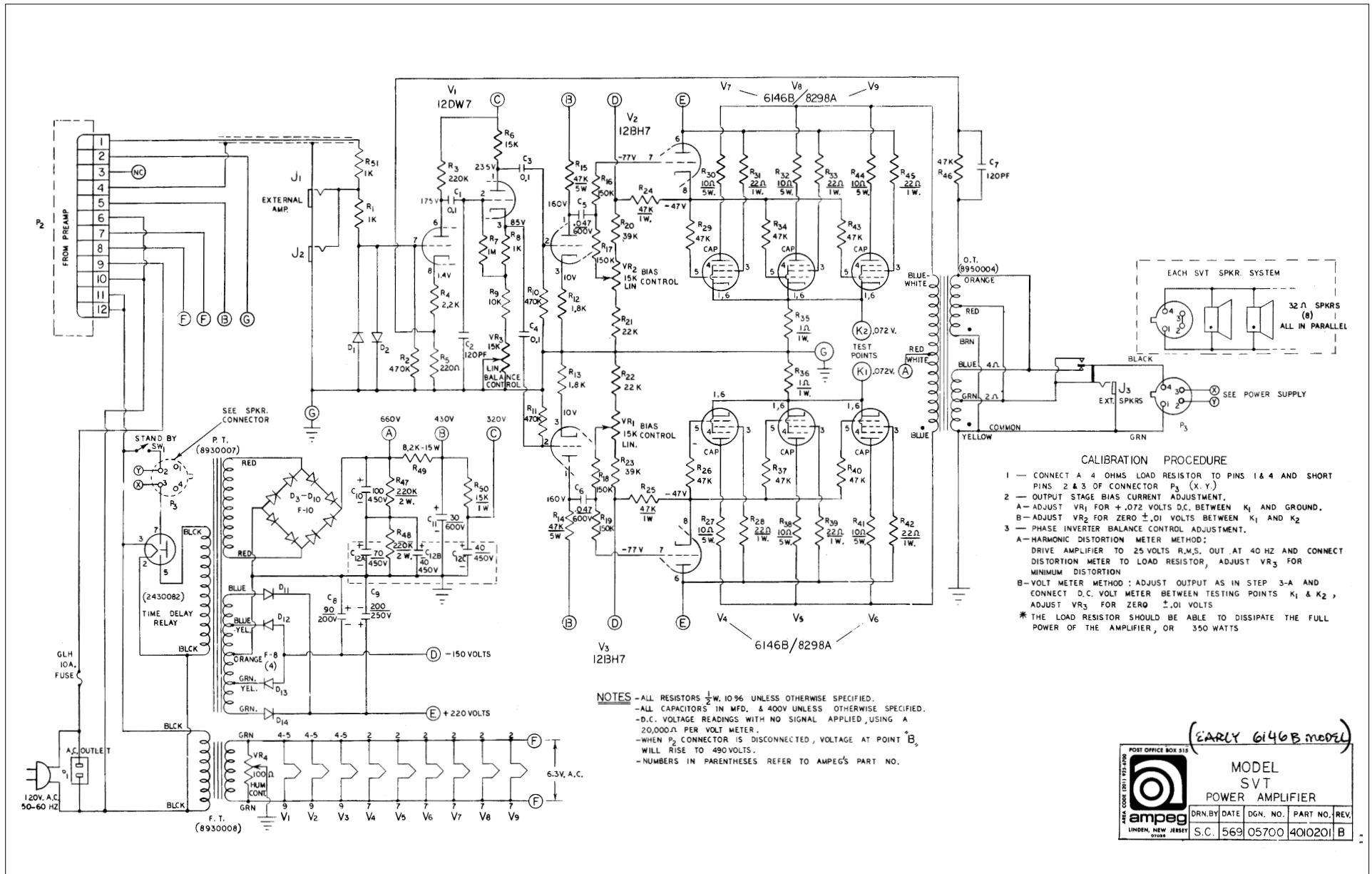


NOTES - ALL RESISTORS IN OHMS $\frac{1}{2}$ W 10% UNLESS OTHERWISE SPECIFIED.
 - ALL CAPACITORS IN MFD & 400V " " " "
 - DC VOLTAGE READINGS WITH NO SIGNAL APPLIED USING A 20,000 Ω PER VOLT VOLTMETER.
 - N.M.B.F.S. IN PARENTHESES REFER TO MFR'S PART NO.

C	591719-1
REV	PART NO
 DIVISION OF THE MAGNAVOX CO. P.O. BOX 818 LINDEN, N.J. 07036 201-882-5700	
MODEL SVT PREAMP	
DESIGNED BY MENDEL DATE 8-72 ENG. NO. 591719 REV. C	

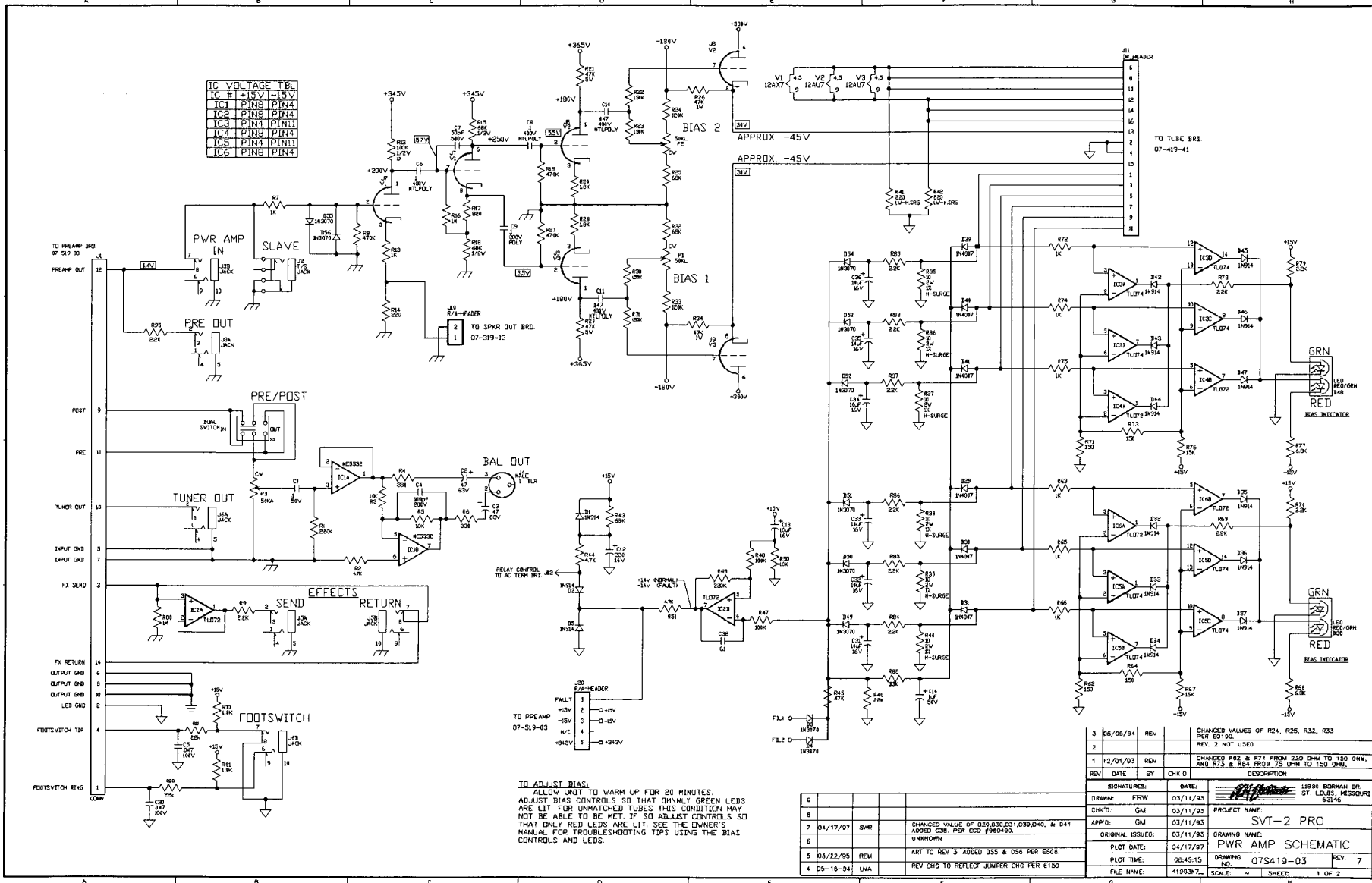
SVT MODEL 6146B

Ampeg



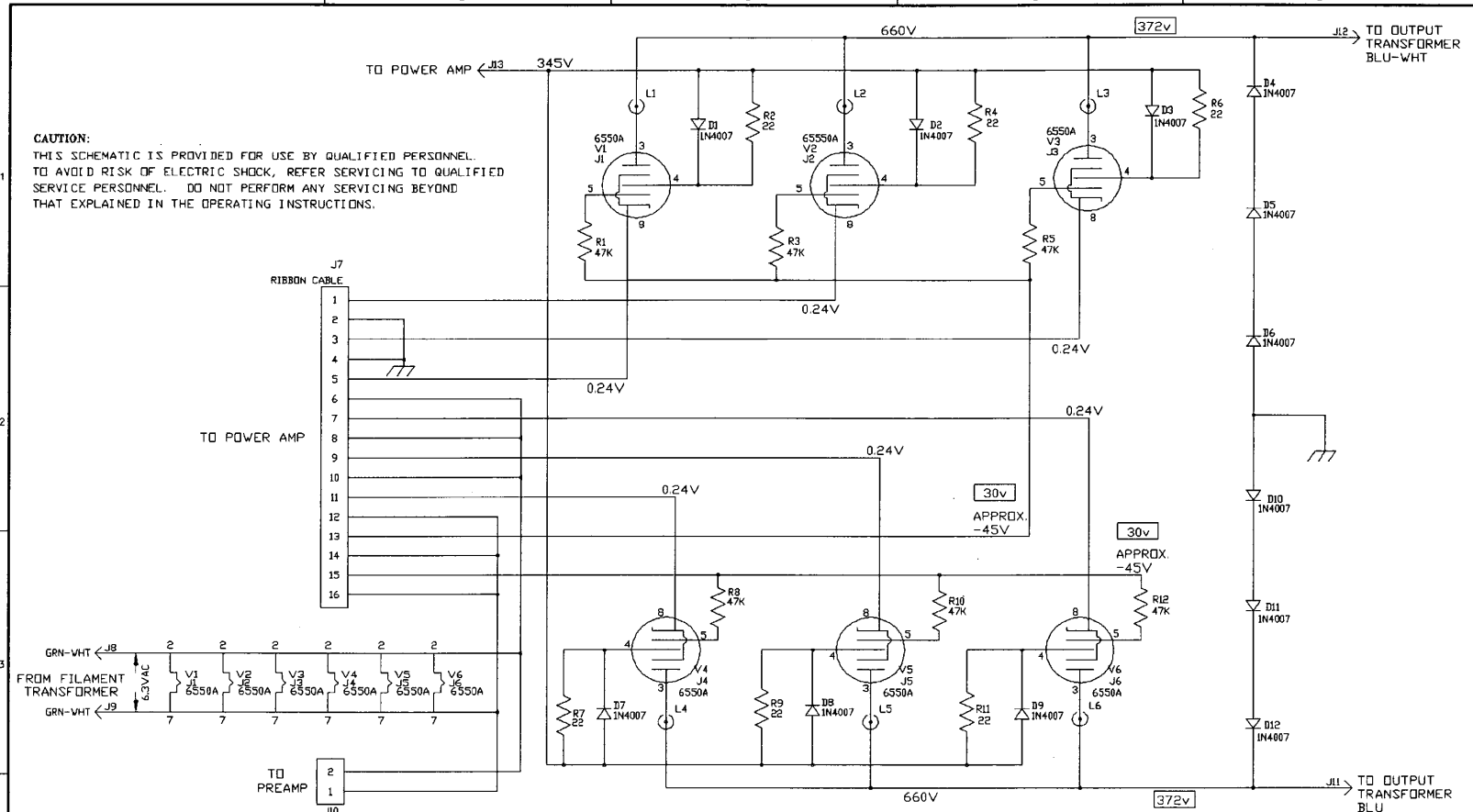
SVT-2 PWR PRE AMP (REV 7)

Ampeg



SVT-2 PRO TUB BD

Ampeg



CAUTION:
THIS SCHEMATIC IS PROVIDED FOR USE BY QUALIFIED PERSONNEL.
TO AVOID RISK OF ELECTRIC SHOCK, REFER SERVICING TO QUALIFIED
SERVICE PERSONNEL. DO NOT PERFORM ANY SERVICING BEYOND
THAT EXPLAINED IN THE OPERATING INSTRUCTIONS.

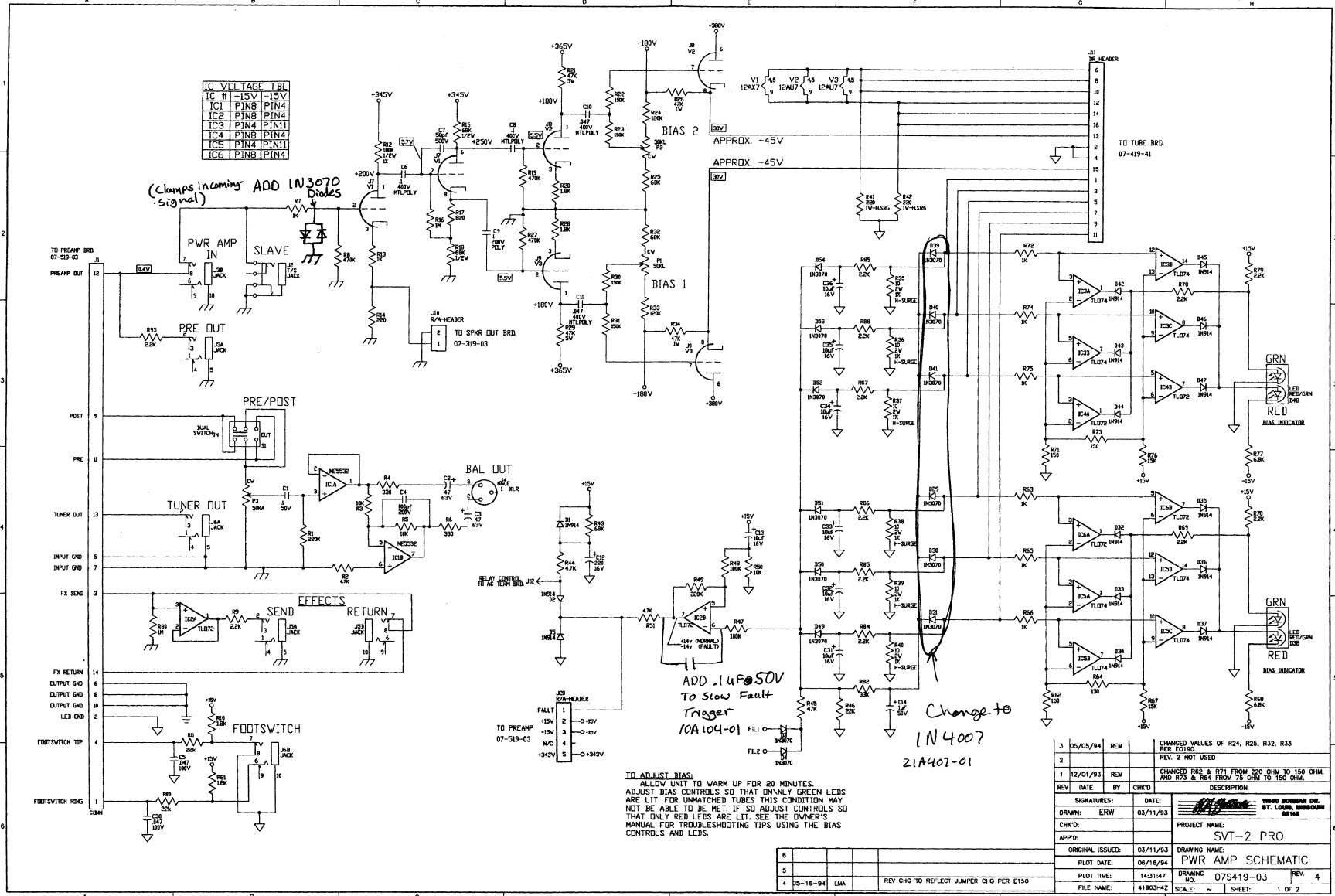
NOTES

- 1) CAUTION: SHOCK HAZARD!
THIS UNIT CONTAINS HAZARDOUS VOLTAGE. DISCONNECT POWER
AND BE SURE POWER SUPPLY IS DISCHARGED BEFORE
TOUCHING INTERNAL PARTS.
- 2) UNLESS NOTED, RESISTOR VALUES IN OHMS, 1/4W-5% TOL.
CAPACITOR VALUES IN MICROFARADS, 50V-10% TOL.
- 3) VOLTAGES ARE MEASURED WITH 1 MEGOHM OSCILLOSCOPE
AND 10 MEGOHM DIGITAL VOLTMETER. VOLTAGES IN RECTANGLES ARE
RMS SIGNAL VOLTAGES WITH FULL POWER OUTPUT. OTHER VOLTAGES
ARE DC WITH NO SIGNAL.

3	08/30/96	LMA		UPDATED REV TO REFLECT PIC CHANGE E960333
2	05/16/94	LMA		REV CHG TO REFLECT JUMPER CHG PER E150
1				
REV	DATE	BY	CHK'D	DESCRIPTION
SIGNATURES:		DATE:		11880 BORMAN DR. ST. LOUIS, MISSOURI 63146
DRAWN: SWR		03/02/93		PROJECT NAME: SVT-2 PRO
CHK'D:				DRAWING NAME: TUBE Bd. SCHEMATIC
APP'D:				DRAWING NO.: 07S419-41
ORIGINAL ISSUED:				SHEET: 1 OF 1
PLOT DATE: 09/03/96				REV 3
PLOT TIME: 07:18:59				
FILE NAME: 41941h3z		SCALE: 1:1		

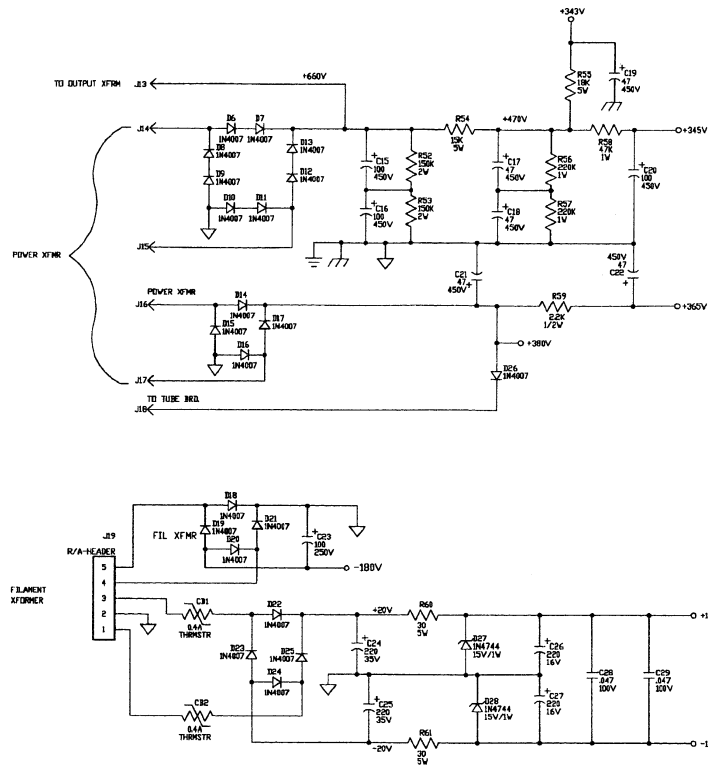
SVT-2 PRO POWER AMP

Ampeg



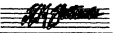
SVT PRO POWER AMP

Ampeg



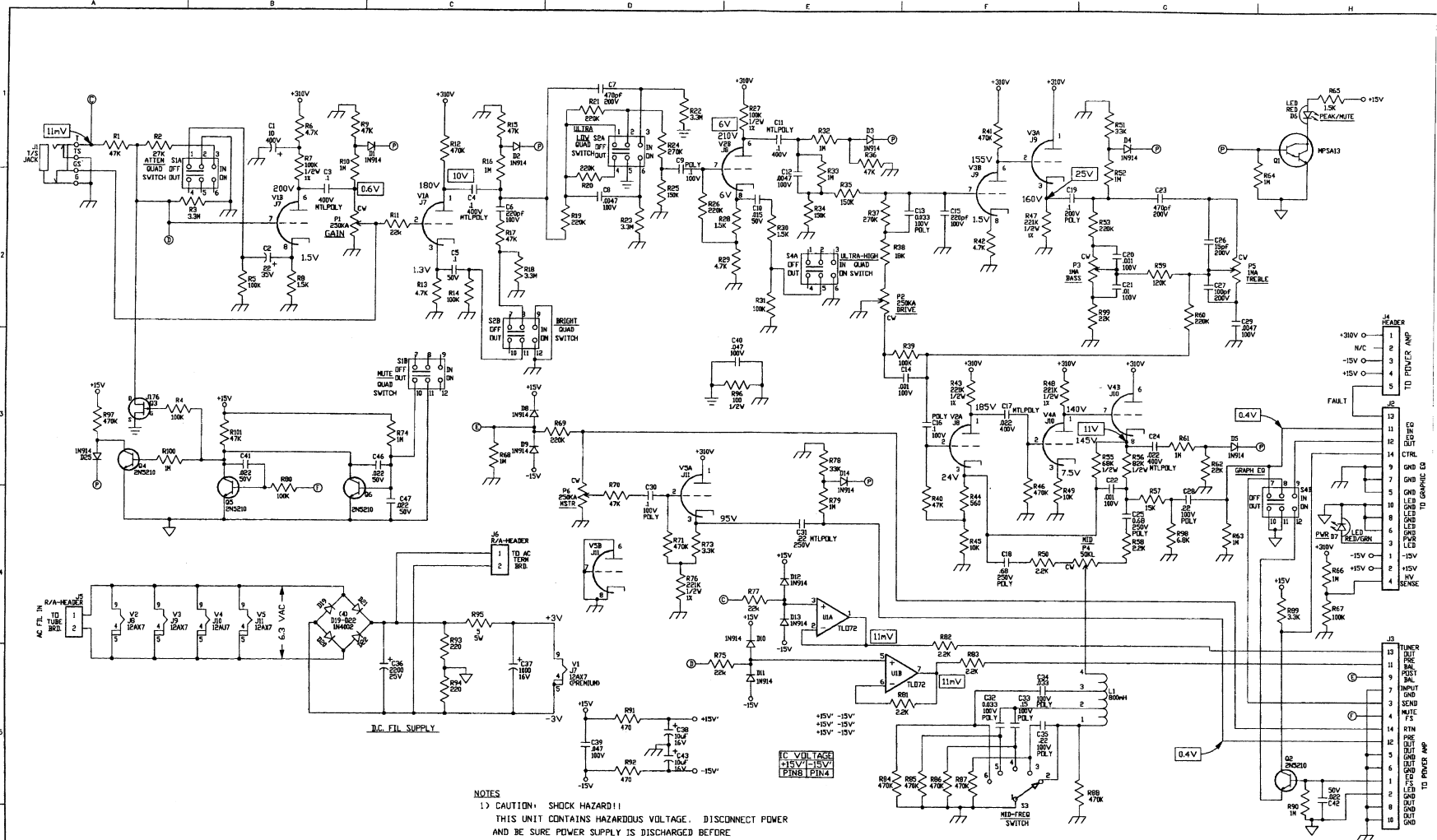
NOTES

- 1) CAUTION: SHOCK HAZARD!!
THIS UNIT CONTAINS HAZARDOUS VOLTAGE. DISCONNECT POWER AND BE SURE POWER SUPPLY IS DISCHARGED BEFORE TOUCHING INTERNAL PARTS.
- 2) UNLESS NOTED, RESISTOR VALUES IN OHMS, 1/4W-5% TOL. CAPACITOR VALUES IN MICROFARADS, 50V-10% TOL.
- 3) VOLTAGES ARE MEASURED WITH 1 MEGOHM OSCILLOSCOPE AND 10 MEGOHM DIGITAL VOLTMETER.
- 4) VOLTAGES IN RECTANGLES ARE RMS SIGNAL VOLTAGES WITH 0.4V IN. OTHER VOLTAGES ARE D.C. IN CONDITIONS STATED.
- 5) CIRCUIT GROUND /// DIRTY GROUND v CHASSIS GROUND +

4	05/16/94	LMA		REV CHG TO REFLECT JUMPER CHG PER E150
3	05/05/94	REM		CHANGED VALUES OF R24, R25, R32, R33 PER E150
2				REV. 2 NOT USED
1	12/01/93	REM		CHANGED RES & R71 FROM 220 OHM TO 150 OHM AND R73 & R64 FROM 75 OHM TO 150 OHM.
REV	DATE	BY	CHK'D	DESCRIPTION
SIGNATURES:		DATE:		 TERRY BORSMAN DR. ST. LOUIS, MISSOURI 63148
DRAWN: ERW		03/11/93		
CHK'D: CM		03/11/93		
APP'D: CM		03/11/93		
ORIGINAL ISSUED: 03/11/93				
PROJECT NAME:				SVT-2 PRO
DRAWING NAME:				PWR AMP SCHEMATIC
DRAWING NO.:				07S419-03
REV.:				4
FILE NAME: D:\419\41903				SCALE: ~ SHEET: 2 OF 2

SVT-2 PRO PREAMP

Ampeg



- NOTES**
- 1) CAUTION: SHOCK HAZARD!! THIS UNIT CONTAINS HAZARDOUS VOLTAGE. DISCONNECT POWER AND BE SURE POWER SUPPLY IS DISCHARGED BEFORE TOUCHING INTERNAL PARTS.
 - 2) UNLESS NOTED, RESISTOR VALUES IN OHMS, 1/4W-5% TOL. CAPACITOR VALUES IN MICROFARADS, 50V-10% TOL.
 - 3) VOLTAGES ARE MEASURED WITH 1 MEGOHM OSCILLOSCOPE AND 10 MEGOHM DIGITAL VOLTMETER.
 - 4) VOLTAGES IN RECTANGLES ARE RMS SIGNAL VOLTAGES. OTHER VOLTAGES ARE D.C. IN CONDITIONS STATED.
 - 5) CIRCUIT GROUND ⏏ DIRTY GROUND ⏏ CHASSIS GROUND ⏏

REV	DATE	BY	CHK'D	DESCRIPTION
3	08/18/94	LMA		REV CHG TO REFLECT JUMPER CHG PER C150
2				
1				

SIGNATURES:	DATE:	THOMAS BISHAM, DR.
DRAWN: ERW	3/30/93	BY: LARRY WISBECKI
CHK'D:		09160
APP'D:		
ORIGINAL ISSUED:		PROJECT NAME: SVT-2 PRO
		DRAWING NAME: PRE AMP SCHEMATIC
PLOT DATE: 05/18/94		
PLOT TIME: 09:42:37		DRAWING NO: 075519-03
		REV: 3
FILE NAME: 51903-02		SCALE: 1:1
		SHEET: 1 OF 1