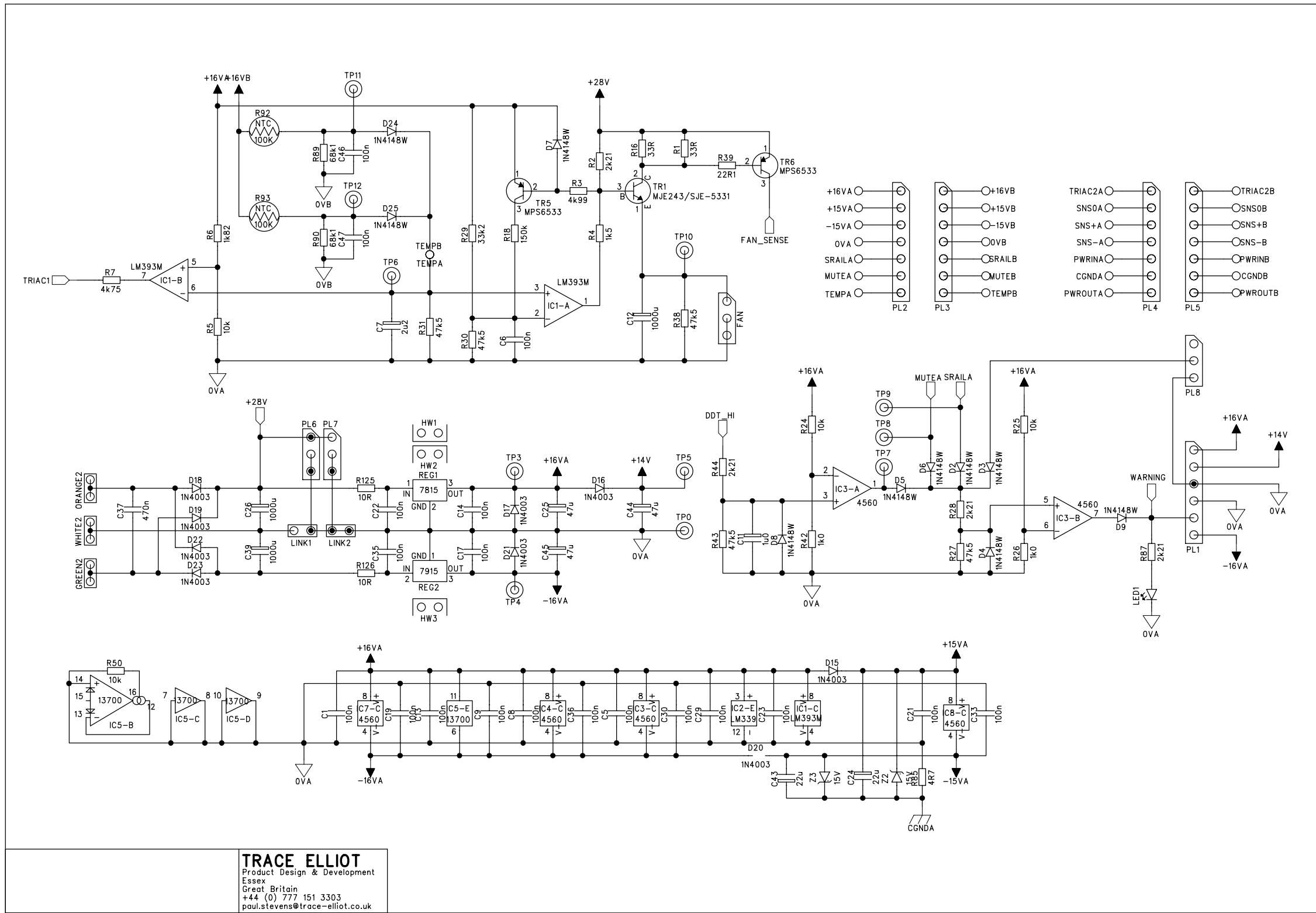


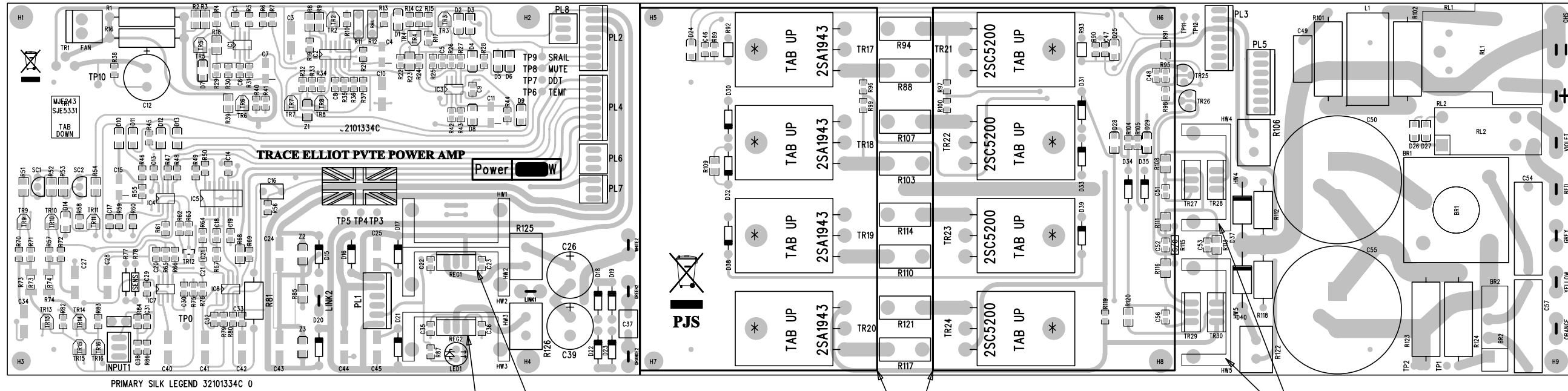
TRACE ELLIOT
 Product Design & Development
 Essex
 Great Britain
 +44 (0) 777 151 3303
 paul.stevens@trace-elliott.co.uk



TRACE ELLIOT
 Product Design & Development
 Essex
 Great Britain
 +44 (0) 777 151 3303
 paul.stevens@trace-elliott.co.uk

PRIMARY SIDE VIEW

R17 - TR24 "TAB UP" ON PRIMARY SIDE



PRIMARY SILK LEGEND 32101334C 0

REG1 TO DUAL HEATSINKS
 THERMAL GREASE ON BACK OF HEATSINKS
 THERMAL GREASE ON BACK OF REG1
 (2) 30900629 HEATSINKS
 31500022 SCREW
 31500319 NUT

REG2 TO HEATSINK
 THERMAL GREASE ON BACK OF REG2
 30900629 HEATSINK
 31500022 SCREW
 31500319 NUT

TR17 - TR20 AND TR21 - TR24 TO HEATSINKS
 * THERMAL GREASE ON TAB OF EACH TRANSISTOR
 30902684 HEATSINK (2)
 31500666 SCREW (4 PER HEATSINK)
 31500398 WASHER (4 PER HEATSINK)
 DIODES AND TEMP SENSORS TO TRANSISTORS
 * THERMAL GREASE BETWEEN R92 & TR17
 THERMAL GREASE BETWEEN R93 & TR21
 THERMAL GREASE BETWEEN D30, D32 & TR18
 THERMAL GREASE BETWEEN D31, D33 & TR22
 THERMAL GREASE BETWEEN D38 & TR19
 THERMAL GREASE BETWEEN D39 & TR23

TR28 AND TR30 TO HEATSINK
 30900629 HEATSINK
 30900143 INSULATOR
 31500022 SCREW
 31500319 NUT

Project number#

Board name: Trace Elliot 700 POWER AMP

Assembly level number:

Item	Part #	Level	Qty.	Description	Manuf	Ven	Last Quote	Quote	Amount	Leadtim
							US\$	US\$	US\$	
1	32101334	1	1	16.8" x 4.00" FR4 PTE-PC013-1	Shengyi		5.5000	#####	5.5000	
2	30300155	2	1	0.033UF 50V 5% X7R 0805			0.0087	#####	0.0087	4-6WKS
3	30300085	2	20	0.1UF 50V 20% Z5U 0805	FENGHUA		0.0028	#####	0.0569	4-6WKS
4	30300157	2	1	1000PF 50V 10% X7R 0805	FENGHUA		0.0030	#####	0.0030	4-6WKS
5	30300088	2	4	100PF 50V 5% NPO 0805	FENGHUA		0.0028	#####	0.0114	4-6WKS
6	30300083	2	1	100UF 16V 20% EL SMT6	JAMICON		0.0344	#####	0.0344	4-6WKS
7	30300226	2	2	10UF 35V 20% EL SMT4	Ill Cap	Ill C	0.0397	0.037	0.0740	PV contr
8	30300158	2	1	1500PF 50V 10% X7R 0805			0.0046	#####	0.0046	4-6WKS
9	30200388	2	2	150R 1W 1% MF 2512						
10	30418504	2	3	15V 1.5W ZENER SMA	On Se	Arro	0.1057	0.066	0.1980	PV contr
11	30300169	2	1	180PF 50V 5% NPO 0805			0.0244	0.02	0.0200	PV contr
12	30418328	2	20	1N4148W SWITCHING DIODE	Diodes	Arro	0.0255	0.011	0.2260	PV contr
13	30300081	2	1	1UF 50V 20% EL SMT4	Panas	Pan	0.1110	0.048	0.0479	
14	30300084	2	1	2.2UF 35V 20% ELN SMT4	Panas	Pan	0.1110	0.048	0.0479	PV contr
15	30300099	2	6	22UF 50V 20% EL SMT6	JAMICON		0.0314	#####	0.1886	4-6WKS
16	30300087	2	2	39PF 50V 5% NPO 0805	FENGHUA		0.0028	#####	0.0057	4-6WKS
17	30418053	2	4	4560 DUAL OPAMP SO8	Rohm	Futu	0.1003	0.1	0.4000	PV contr
18	30300079	2	6	47UF 35V 20% EL SMT6	Panas	Pan	0.0840	0.037	0.2190	PV contr
19	30418138	2	1	J111 JFET N SOT23	On Se	Arro	0.1382	0.059	0.0589	PV contr
20	30418110	2	1	LM339 QUAD COMPARATOR SMT			0.0596	#####	0.0596	
21	30418274	2	1	LM393M DUAL COMPARATOR	Nation	Arro	0.1003	0.089	0.0890	PV contr
22	30418191	2	9	MPS-6531 NPN TRANS.SMT			0.0317	#####	0.2853	
23	30418033	2	5	MPS6533/34 PNP SMT			0.0285	#####	0.1423	
24	30418231	2	1	NJM13700 DUAL OTA SMT	NJR	NJR	0.4335	0.245	0.2450	PV contr
25	30200438	2	2	RES SMD 0805 1/10W 1% 1.21K	ROHM/YA		0.0012	#####	0.0024	6-8WKS
26	30200190	2	1	RES SMD 0805 1/10W 1% 1.5K						
27	30200437	2	1	RES SMD 0805 1/10W 1% 1.8K	ROHM/FEN		0.0009	#####	0.0009	4-6WKS
28	30200194	2	2	RES SMD 0805 1/10W 1% 100K	ROHM/FEN		0.0009	#####	0.0017	4-6WKS
29	30200181	2	1	RES SMD 0805 1/10W 1% 100R	ROHM/FEN		0.0009	#####	0.0009	4-6WKS
30	30200174	2	13	RES SMD 0805 1/10W 1% 10K	ROHM/FEN		0.0009	#####	0.0111	4-6WKS
31	30200182	2	1	RES SMD 0805 1/10W 1% 187R			0.0012	#####	0.0012	4-6WKS
32	30200188	2	9	RES SMD 0805 1/10W 1% 1K	ROHM/FEN		0.0009	#####	0.0077	4-6WKS
33	30200195	2	1	RES SMD 0805 1/10W 1% 1M	ROHM/FEN		0.0009	#####	0.0009	4-6WKS
34	30200267	2	5	RES SMD 0805 1/10W 1% 2.21K	ROHM/FEN		0.0009	#####	0.0043	4-6WKS
35	30200248	2	1	RES SMD 0805 1/10W 1% 2.74K	ROHM/FEN		0.0009	#####	0.0009	4-6WKS
36	30200256	2	4	RES SMD 0805 1/10W 1% 22.1K	ROHM/FEN		0.0009	#####	0.0034	4-6WKS
37	30200342	2	1	RES SMD 0805 1/10W 1% 221K	ROHM/FEN		0.0009	#####	0.0009	4-6WKS
38	30200202	2	2	RES SMD 0805 1/10W 1% 3.32K			0.0009	#####	0.0017	4-6WKS
39	30200423	2	1	RES SMD 0805 1/10W 1% 3.65K						
40	30200330	2	2	RES SMD 0805 1/10W 1% 33.2K			0.0009	#####	0.0017	4-6WKS
41	30200431	2	1	RES SMD 0805 1/10W 1% 332K			0.0009	#####	0.0009	4-6WKS
42	30200251	2	8	RES SMD 0805 1/10W 1% 4.75K	ROHM/FEN		0.0009	#####	0.0068	4-6WKS
43	30200205	2	14	RES SMD 0805 1/10W 1% 47.5K	ROHM/FEN		0.0009	#####	0.0119	4-6WKS
44	30200335	2	2	RES SMD 0805 1/10W 1% 68.1K			0.0009	#####	0.0017	4-6WKS
45	30200200	2	2	RES SMD 0805 1/10W 1% 8.25K	ROHM/FEN		0.0009	#####	0.0017	4-6WKS
46	30200337	2	1	RES SMD 0805 1/10W 1% 82.5K			0.0009	#####	0.0009	4-6WKS
47	30200060	2	1	RES SMD 1206 1/4W 1% 100R			0.0012	#####	0.0012	4-6WKS
48	30200051	2	1	RES SMD 1206 1/4W 1% 10K						
49	30200058	2	1	RES SMD 1206 1/4W 1% 150K						
50	30200146	2	2	RES SMD 1206 1/4W 1% 16.2K	ROHM/YA		0.0012	#####	0.0024	6-8WKS
51	30200047	2	5	RES SMD 1206 1/4W 1% 1K						
52	30200214	2	1	RES SMD 1206 1/4W 1% 2.21K			0.0012	#####	0.0012	4-6WKS
53	30200101	2	1	RES SMD 1206 1/4W 1% 22.1R			0.0009	#####	0.0009	4-6WKS
54	30200220	2	1	RES SMD 1206 1/4W 1% 221R	ROHM/YA		0.0012	#####	0.0012	6-8WKS
55	30200136	2	1	RES SMD 1206 1/4W 1% 392R			0.0012	#####	0.0012	4-6WKS
56	30200049	2	2	RES SMD 1206 1/4W 1% 4.99K						
57	30200147	2	1	RES SMD 1206 1/4W 1% 61.9R						
58	30200041	2	3	RES SMD 1206 1/4W 5% 4.7R			0.0037	#####	0.0111	4-6WKS
59	30519917	3	1	.8UH AIR CORE			0.0826	#####	0.0826	
60	30320096	3	1	0.1UF 250V 10% PE RADH	EUROPTR		0.0677	#####	0.0677	4-6WKS
61	30320271	3	2	0.47uF 275V 20% "X" RADH						
62	30330159	3	1	0.47uF 63V 5% PES RAD						
63	30320186	3	3	1000UF 35V 20% EL RAD	FENGHUA		0.0096	#####	0.0289	4-6WKS
64	30240212	3	2	100K NTC THERMISTOR			0.1436	#####	0.2872	

