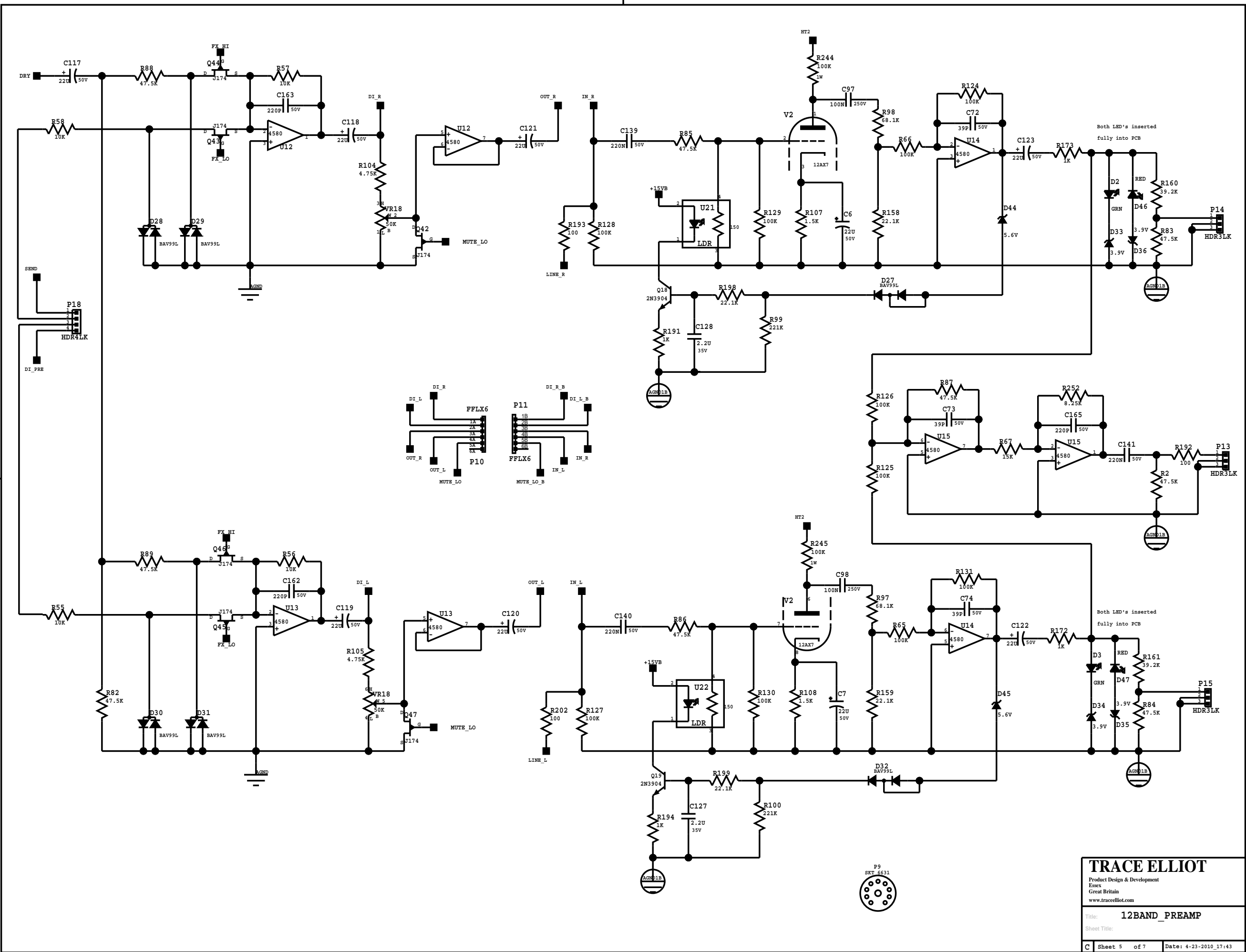


TRACE ELLIOT
 Product Design & Development
 Essex
 Great Britain
 www.traceelliot.com

Title: **12BAND_PREAMP**
 Sheet Title:

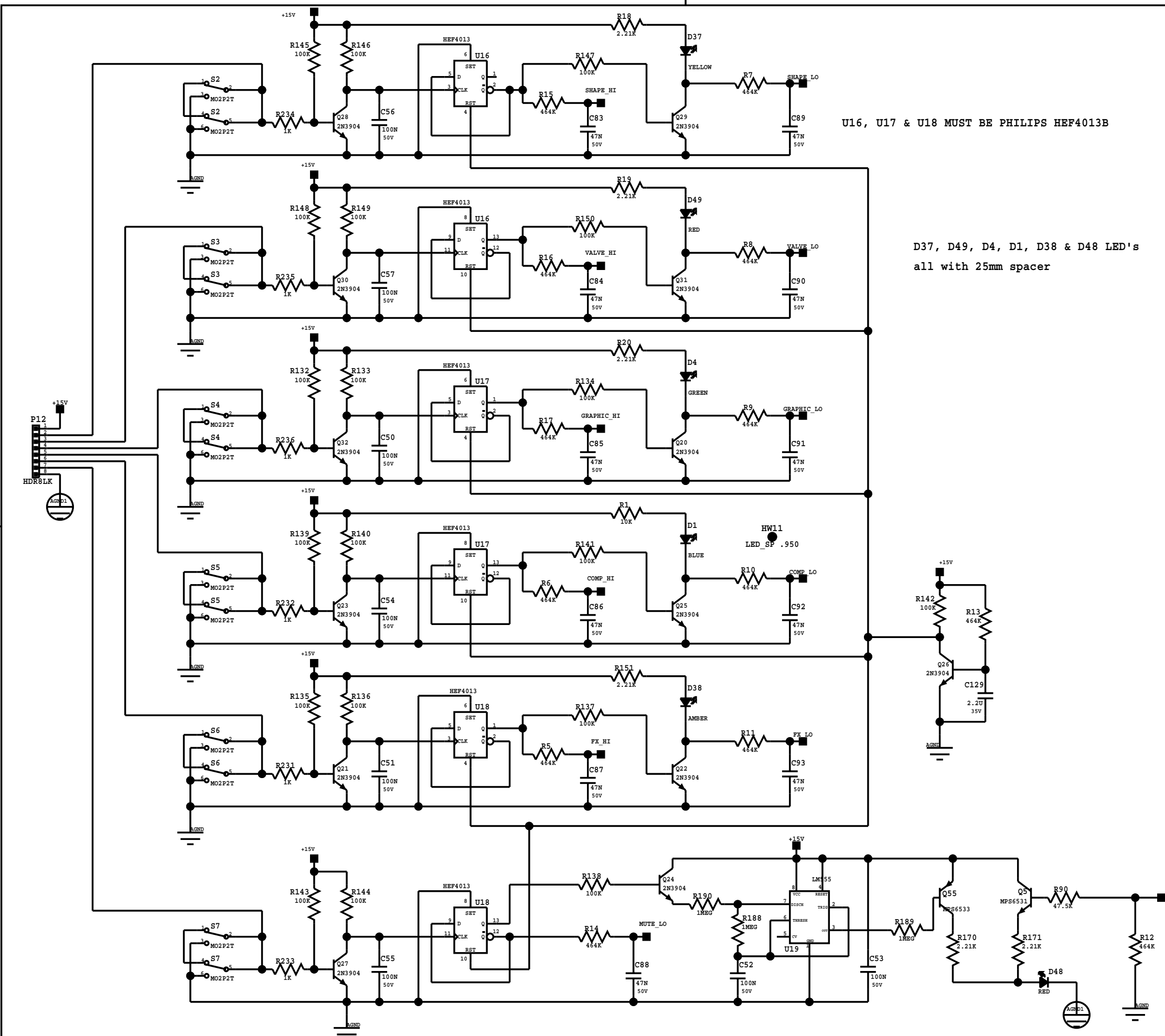
C Sheet 3 of 7 Date: 4-23-2010_17:43



TRACE ELLIOT
 Product Design & Development
 Essex
 Great Britain
 www.traceelliot.com

Title: **12BAND_PREAMP**
 Sheet Title:

C Sheet 5 of 7 Date: 4-23-2010_17:43



U16, U17 & U18 MUST BE PHILIPS HEF4013B

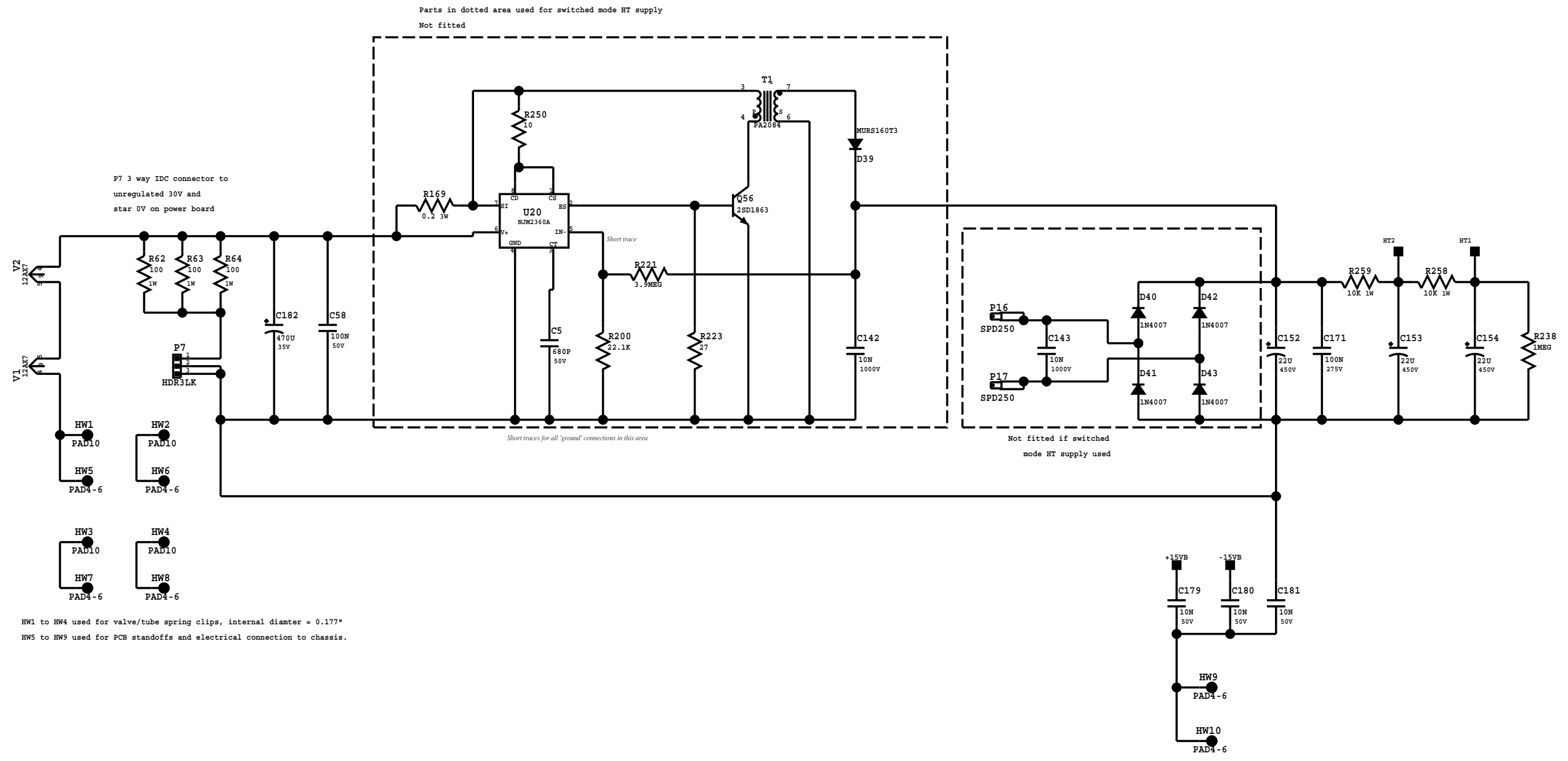
D37, D49, D4, D1, D38 & D48 LED's
all with 25mm spacer

WARNING

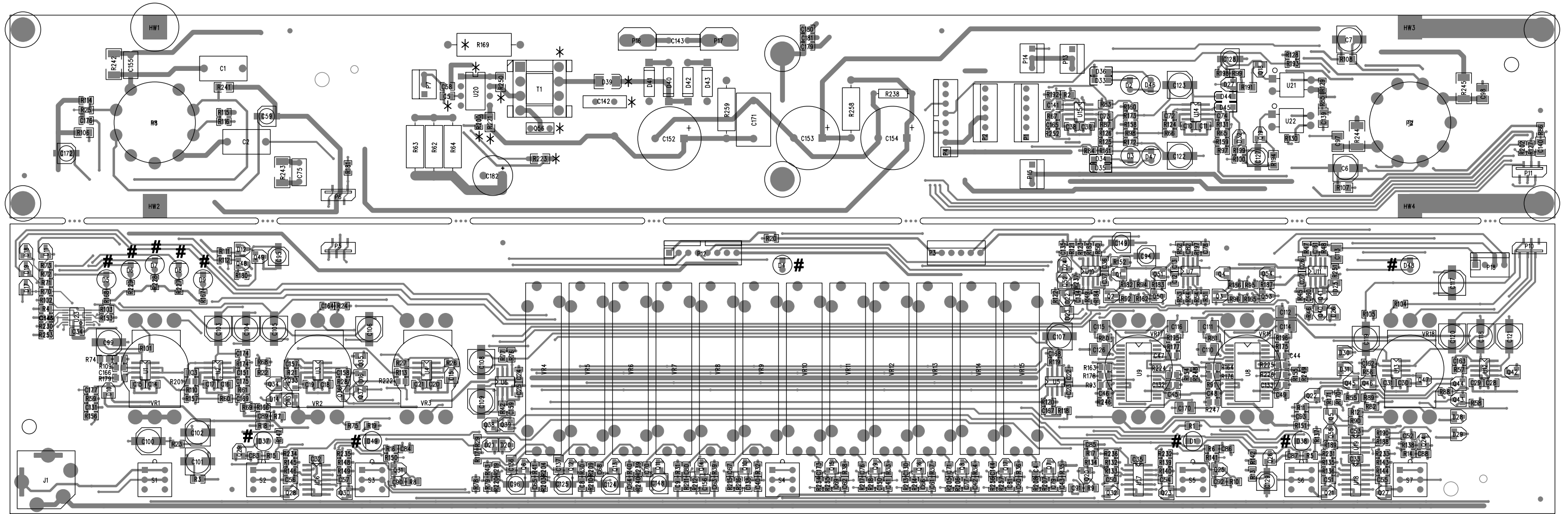
TRACE ELLIOT
 Product Design & Development
 Essex
 Great Britain
 www.traceelliot.com

Title: **12BAND_PREAMP**
 Sheet Title:

C Sheet 6 of 7 Date: 4-23-2010_17:43



*DO NOT INSTALL
 R169 R250 R200 R221 R223 C5 C142 D39 Q56 U20 T1



PRIMARY SIDE VIEW

D1 D4 D5 D6 D7 D8 D9 D37 D48 D49 INSTALLED WITH 30901980 SPACER

BILL OF MATERIAL REPORT

REPORT DATE/TIME: 4/28/2010 4:22:14 PM

BOARD NAME: PVTE 12 BAND PREAMP

ASSEMBLY LEVEL NUMBER: 29100012

PROJECT NUMBER: E0800001

DESIGNER: JTH-32101642

Qty.	Part #	Description	Reference Designators

--			
1	30200046	470 1/4W 5% MF 1206	R152
2	30200047	1K 1/4W 1% MF 1206	R191 R194
1	30200074	10K 1/10W 0.1% MF 0805	R222
3	30200128	1.50K 1/4W 1% MF 1206	R106 R107 R108
3	30200169	22K 1/10W 5% MF 0805	R224 R225 R226
2	30200173	4.99K 1/10W 1% MF 0805	R239 R240
39	30200174	10K 1/10W 1% MF 0805	R1 R21 R22 R23 R24 R25 R26 R27 R28 R29 R30 R31 R32 R33 R34 R35 R36 R37 R38 R39 R40 R41 R42 R43 R44 R45 R46 R47 R48 R49 R50 R51 R52 R53 R54 R55 R56 R57 R58
4	30200181	100 1/10W 1% MF 0805	R192 R193 R202 R253
12	30200188	1.00K 1/10W 1% MF 0805	R172 R173 R227 R228 R229 R230 R231 R232 R233 R234 R235 R236
44	30200194	100K 1/10W 1% MF 0805	R65 R66 R109 R110 R111 R112 R113 R114 R115 R116 R117 R118 R119 R120 R121 R122 R123 R124 R125 R126 R127 R128 R129 R130 R131 R132 R133 R134 R135 R136 R137 R138 R139 R140 R141 R142 R143 R144 R145 R146 R147 R148 R149 R150

12	30200195	1.00M	1/10W 1% MF 0805	R179 R180 R181 R182 R183 R184 R185 R186 R187 R188 R189 R190
2	30200196	10	1/10W 1% MF 0805	R248 R249
1	30200200	8.25K	1/10W 1% MF 0805	R252
1	30200202	3.32K	1/10W 1% MF 0805	R153
24	30200205	47.5K	1/10W 1% MF 0805	R2 R68 R69 R70 R71 R72 R73 R74 R75 R76 R77 R78 R79 R80 R81 R82 R83 R84 R85 R86 R87 R88 R89 R90
1	30200214	2.21K	1/4W 1% MF 1206	R241
1	30200248	2.74K	1/10W 1% MF 0805	R166
12	30200251	4.75K	1/10W 1% MF 0805	R103 R104 R105 R203 R204 R205 R206 R207 R208 R209 R210 R251
7	30200256	22.1K	1/10W 1% MF 0805	R158 R159 R195 R196 R197 R198 R199
2	30200259	39.2K	1/10W 1% MF 0805	R160 R161
8	30200267	2.21K	1/10W 1% MF 0805	R18 R19 R20 R151 R167 R168 R170 R171
4	30200276	5.11K	1/10W 1% MF 0805	R254 R255 R256 R257
4	30200327	6.04K	1/10W 1% MF 0805	R211 R212 R213 R214
4	30200328	6.81K	1/10W 1% MF 0805	R175 R176 R177 R178
3	30200330	33.2K	1/10W 1% MF 0805	R59 R60 R61
1	30200334	15.0K	1/10W 1% MF 0805	R67
4	30200335	68.1K	1/10W 1% MF 0805	R97 R98 R156 R157
2	30200342	221K	1/10W 1% MF 0805	R99 R100

6	30200376	12.1K	1/10W	1%	MF	0805	R91 R92 R93 R94 R95 R96	
1	30200385	6.49K	1/10W	1%	MF	0805	R174	
2	30200392	4.42K	1/10W	1%	MF	0805	R215 R216	
15	30200417	464K	1/10W	1%	MF	0805	R3 R4 R5 R6 R7 R8 R9 R10 R11 R12 R13 R14 R15 R16 R17	
1	30200431	332K	1/10W	1%	MF	0805	R201	
4	30200434	845K	1/10W	1%	MF	0805	R162 R163 R164 R165	
2	30200441	2.21K	1/10W	.1%	MF	0805	R101 R102	
2	30200443	2.2M	1/10W	5%		0805	R246 R247	
4	30200499	100K	1W	1%	MF	2512	R242 R243 R244 R245	
1	30200534	499K	1/10W	1%		0805	R237	
2	30200543	47.5	1/10W	1%		0805	R154 R155	
4	30200545	5.62K	1/10W	1%		0805	R217 R218 R219 R220	
3	30210003	100	1W	5%	MO	AXL	R62 R63 R64	
2	30210018	10K	1W	5%	MO	AXL	R258 R259	
2	30240409	NSL-32SR3 OPTOCOUPLER						U21 U22
1	30241118	1M	1/4W	1%	MF	AXL	R238	
5	30300069	0.22UF	50V	10%	X7R	1206	C136 C137 C139 C140 C141	
3	30300081	1UF	50V	20%	EL	SMT4	C148 C149 C172	
5	30300084	2.2UF	35V	20%	ELN	SMT4	C59 C124 C127 C128 C129	
1	30300086	10PF	50V	5%	NPO	0805	C3	
3	30300087	39PF	50V	5%	NPO	0805	C72 C73 C74	
2	30300088	100PF	50V	5%	NPO	0805	C134 C135	
2	30300089	220PF	50V	5%	NPO	0805	C164 C165	
12	30300090	470PF	50V	5%	NPO	0805	C8 C9 C40 C41 C42 C43 C60 C61	

QTY	Part No.	Value	Specs	Location
				C62 C63 C64 C65
2	30300093	0.1UF	50V 10% X7R 0805	C145 C169
2	30300096	6800PF	50V 5% X7R 0805	C76 C79
20	30300099	22UF	50V 20% EL SMT6	C6 C7 C99 C100 C101 C102 C103 C104 C105 C106 C107 C108 C109 C117 C118 C119 C120 C121 C122 C123
1	30300105	1000PF	50V 5% NPO 0805	C144
8	30300108	10UF	35V +80,20% Y5V 1210	C110 C111 C112 C113 C114 C115 C116 C170
1	30300115	2200PF	50V 10% X7R 0805	C71
8	30300116	0.01UF	50V 5% X7R 0805	C81 C174 C175 C176 C177 C179 C180 C181
46	30300121	0.1UF	50V 5% X7R 0805	C10 C11 C12 C13 C14 C15 C16 C17 C18 C19 C20 C21 C22 C23 C24 C25 C26 C27 C28 C29 C30 C31 C32 C33 C34 C35 C36 C37 C38 C39 C44 C45 C46 C47 C48 C49 C50 C51 C52 C53 C54 C55 C56 C57 C58 C70
1	30300145	3300PF	50V 5% X7R 0805	C130
1	30300146	0.47UF	50V +80,20% Y5V 1206	C156
1	30300147	680PF	50V 5% NPO 0805	C4
2	30300148	0.022UF	50V 5% X7R 0805	C77 C78
3	30300150	22PF	50V 5% NPO 0805	C166 C167 C168
1	30300154	0.015UF	50V 10% X7R 0805	C173
2	30300155	0.033UF	50V 5% X7R 0805	C66 C67
1	30300161	4700PF	50V 5% X7R 0805	C151
3	30300164	47PF	50V 5% NPO 0805	C131 C132 C133

7	30300165	220PF 50V 10% X7R 0805	C157 C158 C159 C160 C161 C162 C163
13	30300171	0.047UF 50V 5% X7R 0805	C80 C82 C83 C84 C85 C86 C87 C88 C89 C90 C91 C92 C93
1	30300176	0.068UF 50V 5% X7R 0805	C150
2	30300204	0.1UF 250V 10% X7R 1210	C97 C98
3	30300247	4.7UF 35V 20% EL SMT4	C94 C95 C96
1	30300269	3.3UF 50V X7R 10% 1210	C126
2	30300270	150NF 50V 5% X7R 0805	C68 C69
1	30300271	330NF 50V 10% X7R 0805	C138
1	30300272	3.3UF 50V 20% EL SMT4	C125
1	30320055	470PF 1000V 20% Z5F RADH	C75
1	30320099	0.01UF 1000V 80-20% Z5U	C143
2	30320106	0.022UF 400V 10% PE RADH	C1 C2
1	30320320	220PF 1000V 20% CER RAD	C155
3	30320339	22UF 450V 20% EL RADH	C152 C153 C154
1	30320556	0.1UF 275V 10% "X" RADH	C171
1	30320678	470UF 35V 20% EL LO-ESR RAD	C182
8	30418033	MPS6533/34 PNP SMT	Q48 Q49 Q50 Q51 Q52 Q53 Q54 Q55
27	30418135	2N3904 NPN SOT23	Q6 Q7 Q8 Q9 Q10 Q11 Q12 Q13 Q14 Q15 Q16 Q17 Q18 Q19 Q20 Q21 Q22 Q23 Q24 Q25 Q26 Q27 Q28 Q29 Q30 Q31 Q32
15	30418139	J-174 P-JFET 30V SOT23	Q33 Q34 Q35 Q36 Q37 Q38 Q39 Q40 Q41 Q42 Q43 Q44 Q45 Q46 Q47
13	30418158	4580 DUAL LN OPAMP SO8	U1 U2 U3 U4 U5 U6 U7 U10 U11 U12 U13 U14 U15

5	30418191	MPS-6531 NPN TRANS.SMT	Q1 Q2 Q3 Q4 Q5
2	30418222	4301 DYNAMICS PROC SO30	U8 U9
2	30418546	5.6V ZENER (SOD123)-SMT	D44 D45
1	30418649	LM339 QUAD COMPARATOR TSSOP	U23
23	30418655	BAV99L DUAL 4148 DIODE SO	D10 D11 D12 D13 D14 D15 D16 D17 D18 D19 D20 D21 D22 D23 D24 D25 D26 D27 D28 D29 D30 D31 D32
1	30418694	LM555 TIMER SOIC8	U19
4	30418739	3.9V ZENER DIODE SOD123	D33 D34 D35 D36
3	30418767	HEF4013 DUAL D FLIP FLOP	U16 U17 U18
2	30450034	RED LED T1 BULK	D46 D47
2	30450035	GRN LED T-1 BULK	D2 D3
1	30450872	TE LED, AMBER T1 LONG LEADS BU	D38
1	30450873	TE LED, BLUE T1 LONG LEADS BUL	D1
3	30450874	TE LED, GRN T1 LONG LEADS BULK	D4 D5 D6
4	30450875	TE LED, RED T1 LONG LEADS BULK	D8 D9 D48 D49
2	30450876	TE LED, YEL T1 LONG LEADS BULK	D7 D37
4	30464007	1N4007 1KV, 1A, SI DIODE	D40 D41 D42 D43
2	30806629	12AX7 LOW MICROPHONIC	V1 V2
2	30806631	TUBE SKT 9PIN CERAMIC	P8 P9
4	31190360	100KB DUAL METRIC SPIDER	VR2 VR3 VR16 VR17
12	31191504	TE 100KB SINGLE 30MM VERT	VR4 VR5 VR6 VR7 VR8 VR9 VR10 VR11 VR12 VR13 VR14 VR15
2	31191505	TE 50KB DUAL 16MM W/41 DETENTS	VR1 VR18
1	31322525	TE SWITCH DPDT 2.8MM SHFT V	S1

6	31322526	TE SW DPDT 2.8MM MOM VERT	S2 S3 S4 S5 S6 S7
1	31466216	STEREO HID JACK INSU W/SP	J1
2	33716194	SPADE .250 PC MNT .093	P16 P17
2	33717010	8 HDR H SR .100" TIN LK	P4 P12
4	33717013	3 HDR V SR .100" TIN LK	P7 P13 P14 P15
1	33717015	4 HDR V SR .100" TIN LK	P18
3	33717123	6 HDR V SR .100" TIN LK	P1 P2 P3
4	33719183	6 FLT FLX 1.0MM CONN SMT	P5 P6 P10 P11
4	PCB_PAD10	PCB PAD#10 MACH SCRW	HW1 HW2 HW3 HW4
6	PCB_PAD46	PCB PAD #4-#6 MACH SCRW	HW5 HW6 HW7 HW8 HW9 HW10

 END OF BILL OF MATERIAL REPORT
