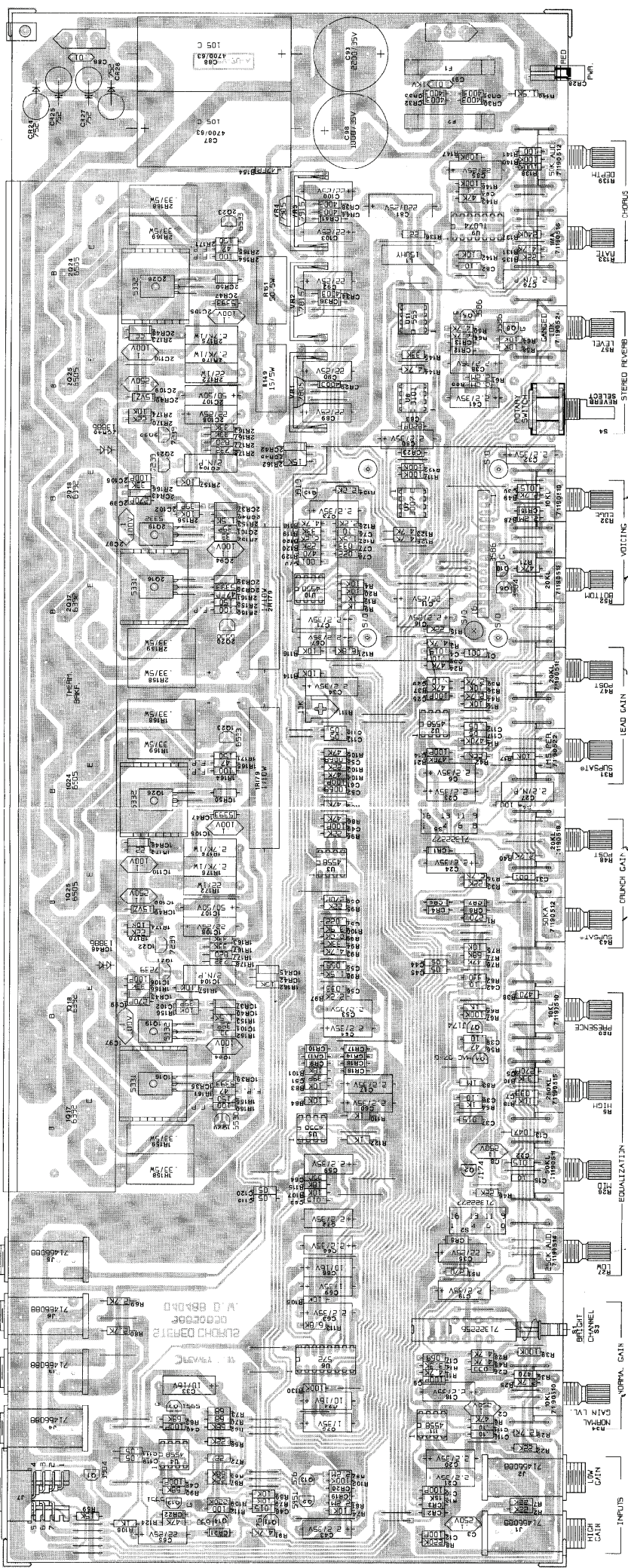


STEFFO CHORUS™ 212
 DC: W885030 (1-4-80)

TRAVEL ELECTRONICS CORP.
 WILMINGTON, DE.
 DRAWN BY: J.N.
 DATE: 7/2/79
 DESIGNED BY: J.C.
 CHECKED BY: J.C.



STEREO CHURUS™ 212

HIGH
LOW

DRAIN (V)
NORMAL

CHANNEL
GAIN

EMPHASIS

EQUALIZATION

HIGH
LOW

PREFERENCE

CRUNCH GAIN

SUPRATONE

HEAD GAIN

VOLUME

REVERSE
STEREO REVERSE

REVERSE

STEREO REVERSE

CHORUS

SWITCH

OUT/DMY1

APP/IN1

OUT/DMY2

APP/IN2

ADVISE

ADVISE

ADVISE

ADVISE

ADVISE

ADVISE

ADVISE

ADVISE

ADVISE

ADVISE

ADVISE

ADVISE

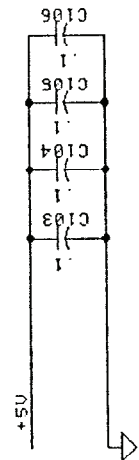
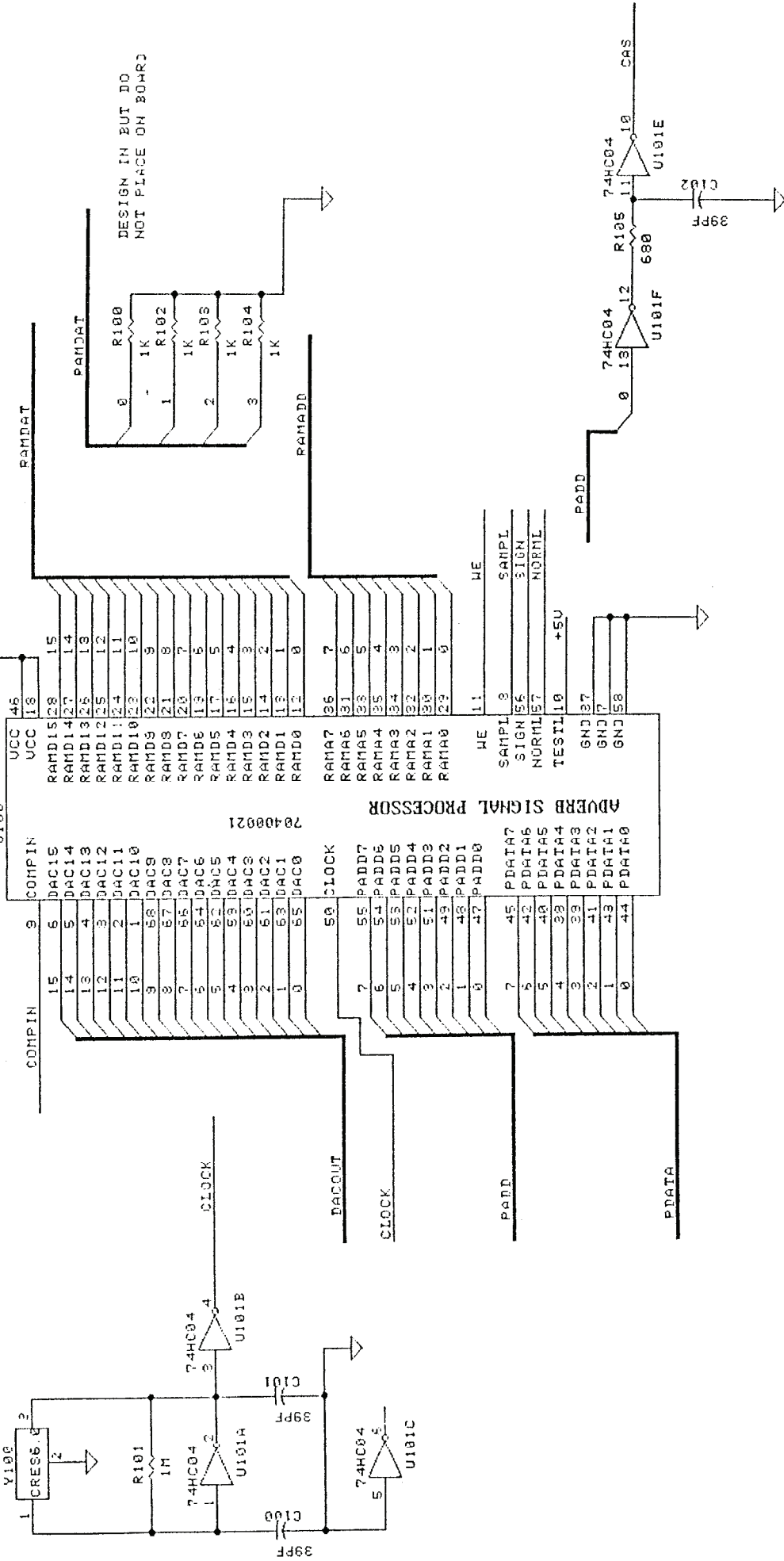
ADVISE

ADVISE

ADVISE

CONFIDENTIAL

Y100 IS CERAMIC RESONATOR THROUGH HOLE PART



NOTE HIGHEST REF R105 C106 U101

PEAVEY ELECTRONICS
 711 A STREET
 MERIDIAN MISS. 39301

TITLE
GUITAR REVERB

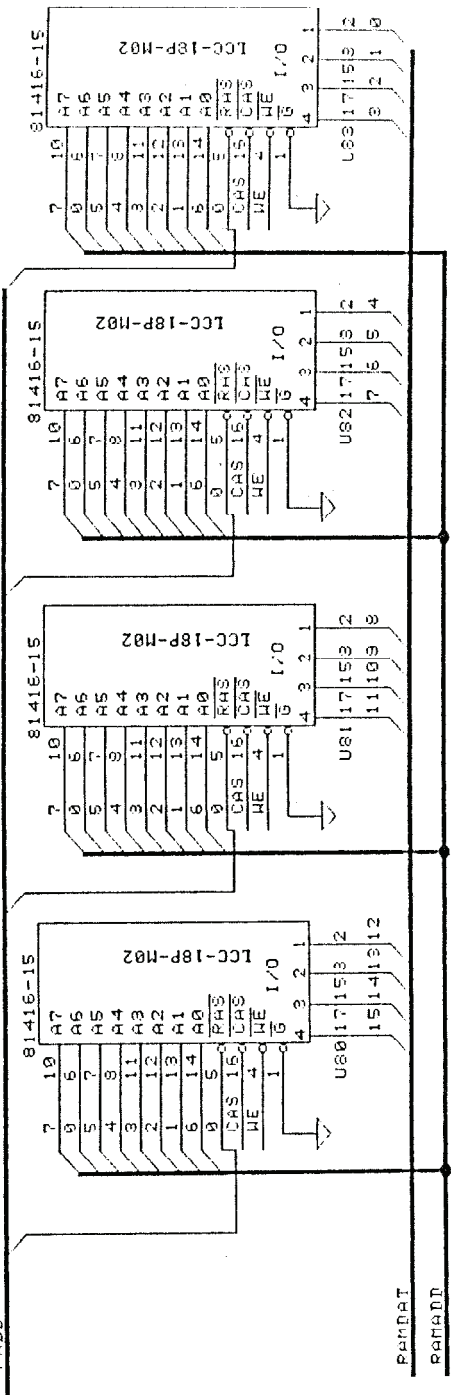
SIZE	CODE	NUMBER	REV
B		XXXXXXXXXXXXXX	A

DATE 5-DEC-87 SHEET 1 OF 5

1 2 3 4 5 6 7 8

CONFIDENTIAL

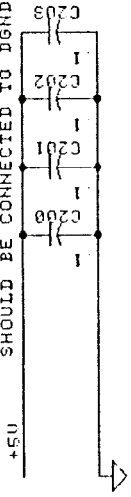
PADD



PAMDAT

PAMADD

(THESE CAPS ARE FOR RAM DECOUPLING. 81416 PIN 18 SHOULD BE CONNECTED TO DGND AND PIN 9 TO +5V)



NOTE HIGHEST REF C203. U83

PEAVEY ELECTRONICS
711 A STREET
MERIDIAN MISS. 39301

TITLE
16K X 4 MEMORY FOR GUITAR REV

SIZE	CODE	NUMBER	REV
B		xxxxxxxxxxxx	A
DATE	5-DEC-97		SHEET 2 OF 5

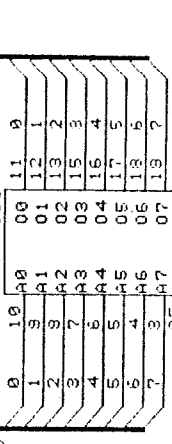
1 2 3 4 5 6 7 8

CONFIDENTIAL

PROM IS THROUGH HOLE WITH 28 PIN SOCKET

PAD1

PROMSUIT



CLOCK

+5V

+5V

C300

U104

Upp

< 16 IS +5V AND 8 IS GND >

74HC95

A3

A2

A1

A0

B3

B2

B1

B0

A3B

A2B

A1B

A0B

A3A

A2A

A1A

A0A

B3A

B2A

B1A

B0A

A3A

A2A

A1A

A0A

B3A

B2A

B1A

B0A

< 16 IS +5V AND 8 IS GND >

74HC175

D1

D2

D3

D4

CIR

U102

U103

BYPAS

R304

10K

+5V

J1

15 1SPINCA

+5V

R305

22K

R302

22K

R301

22K

R300

22K

U101D

74HC04

9

+5V

R306

1K

C301

U101D

74HC04

9

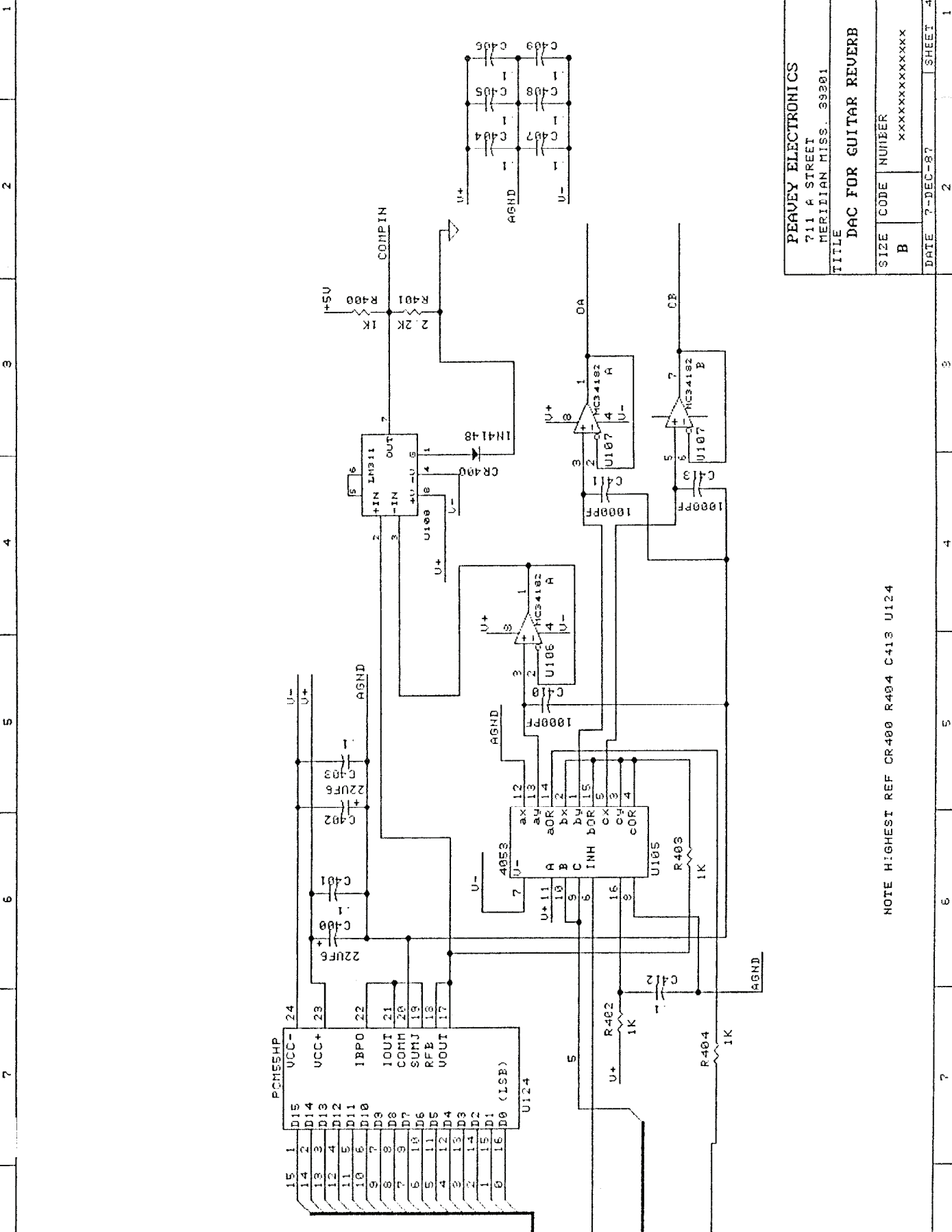
NOTE HIGHEST REF CR300 R305 C301 U104 J1

PEAVEY ELECTRONICS
 711 A STREET
 MERIDIAN MISS. 39301

TITLE
 ALGORITHM PROM FOR GUITAR REV

SIZE	CODE	NUMBER	REV
B		XXXXXXXXXXXX	A

DATE 7-DEC-87 SHEET 3 OF 5

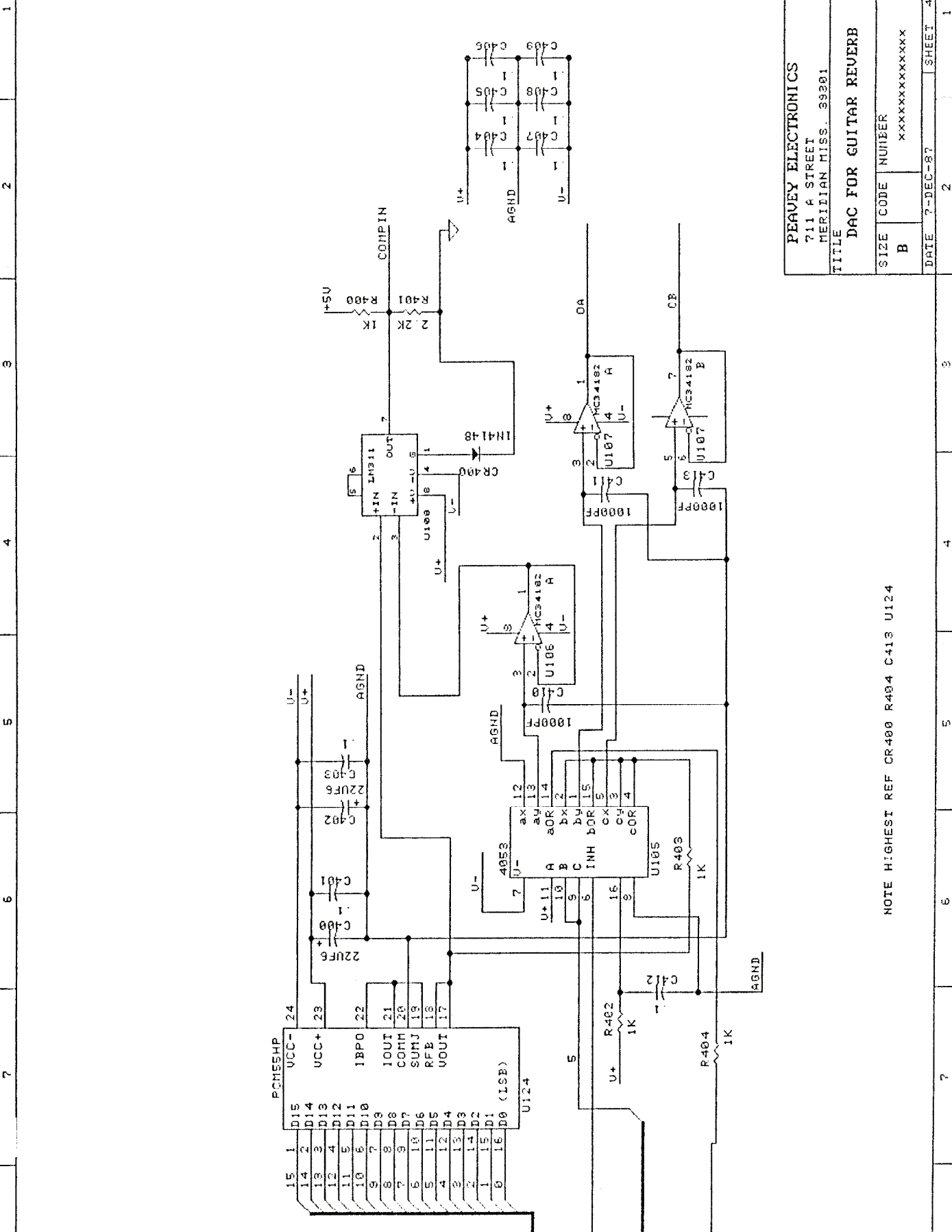


PEAVEY ELECTRONICS
 711 A STREET
 MERIDIAN MISS. 39201

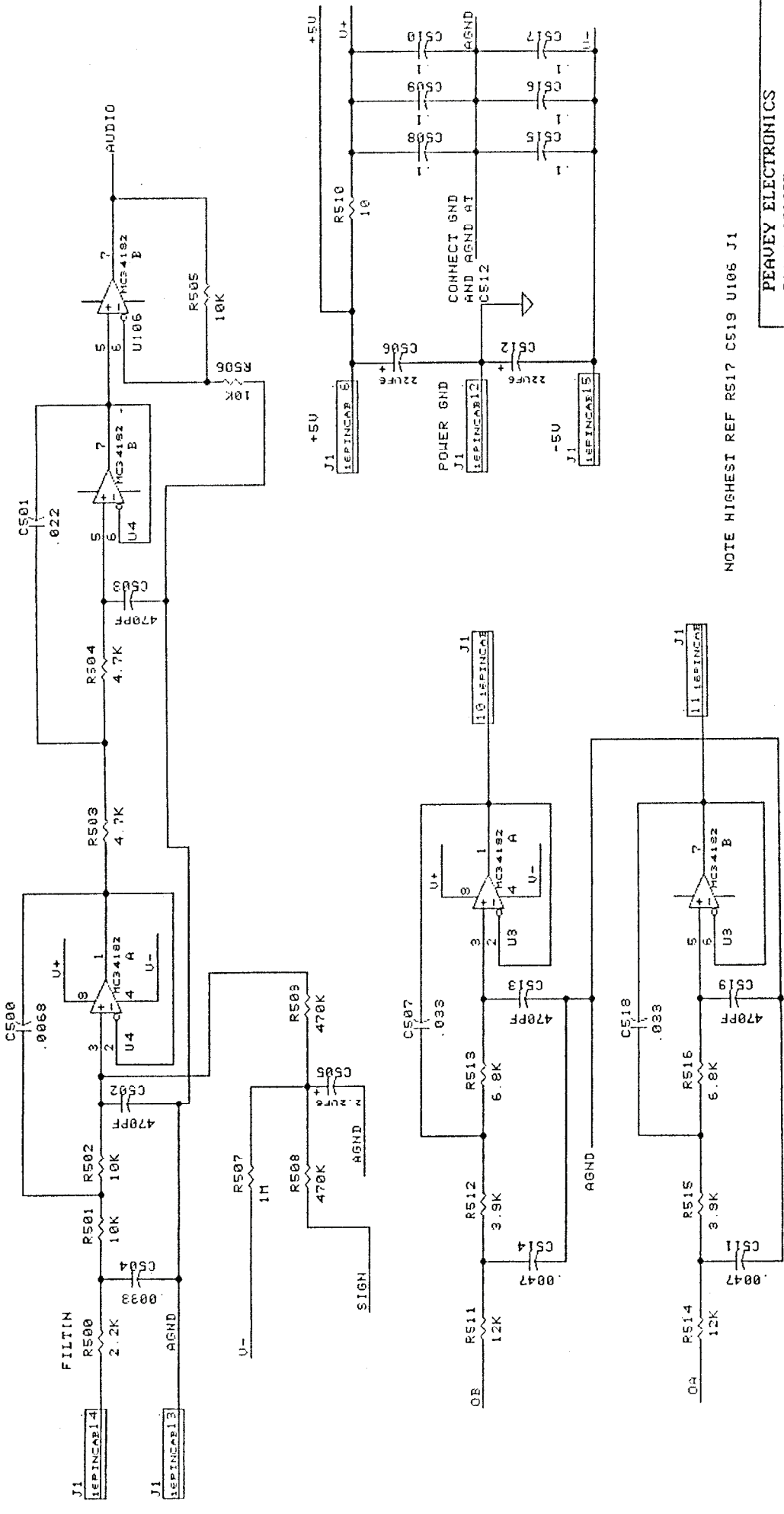
TITLE
 DAC FOR GUITAR REVERB

SIZE	CODE	NUMBER	REV
B		xxxxxxxxxxxx	A
DATE	7-DEC-87		SHEET 4 OF 5

NOTE HIGHEST REF CR400 R404 C413 U124



CONFIDENTIAL



NOTE HIGHEST REF RS17 CS19 U106 J1

PEAVEY ELECTRONICS 711 A STREET MERIDIAN MISS. 39301	
TITLE INPUT FILTER 12K GUITAR REVERB	
SIZE B	CODE NUMBER XXXXXXXXXXXXX
DATE 7-DEC-87	SHEET 5 OF 5

RS17 IS TO BE DESIGNED IN BUT NOT PLACED ON BOARD AT THIS TIME

