



PASSPORT® P-80
(This is the model name for warranty claims)

p/n 069-1003-000

SERVICE MANUAL



ATTENTION:

WARRANTY SERVICE PROCEDURES

Warranty field service of the Passport® P-80 will be limited to replacement of defective PCB Assemblies and all other parts **not** marked as “REF” in the Parts List. **Non-Warranty** repairs can of course be to the component level at the Service Center’s discretion. For **non-warranty** component level repairs all parts listed as “REF” in the Parts List must be sourced from suppliers other than FMIC.



October, 2007

IMPORTANT NOTICE

• Copyright © 2007 FMIC. All rights reserved. All information contained herein is CONFIDENTIAL and PROPRIETARY and is the property of Fender® Musical Instruments Corporation. It is not to be sold or assigned to another party and is disclosed solely for use by Fender Authorized Service Centers for purposes of product service and maintenance. All information is not to be disclosed to others without the expressed permission of Fender® Musical Instruments Corporation. All

specifications are subject to change without notice. This information and any copies produced electronically or otherwise must be surrendered upon demand of Fender® Musical Instruments Corporation.

• Parts marked with two asterisks (**) indicate the required use of that specific part. This is necessary for RELIABILITY and SAFETY requirements. **DO NOT USE A SUBSTITUTE!**

PARTS LIST CODES

The description codes used in the itemized Parts Lists are defined below:

CAPACITOR CODES

CAP AE = Aluminum Electrolytic
CAP CA = Ceramic Axial
CAP CD = Ceramic Disk
CAP CR = Ceramic Radial
CAP MPF = Metalized Polyester Film
CAP MY = Mylar
CAP PFF = Polyester Film/Foil

RESISTOR CODES

RES CC = Carbon Comp
RES CF = Carbon Film
RES FP = Flame Proof
RES MF = Metal Film
RES MOX = Metal Oxide
RES WW = Wire Wound

HARDWARE CODES

BLX = Black Oxide
CR = Chrome Plated
HWH = Hex Washer Head
M = Machine Screw
NI = Nickel Plated
OHP = Oval Head Phillips
PB = Particle Board
PHP = Pan Head Phillips
PHPS = Pan Head Phillips Sems
SMA = Sheet Metal "A" Point
SMB = Sheet Metal "B" Point
SS = Stainless Steel
TF = Thread Forming
ZI = Zinc Plated



SPECIFICATIONS

Model Name:	PASSPORT P-80
Release Number:	PR600
Part Number:	(120V, 60Hz) US: 069-1003-000 (240V, 50 Hz) AUS: 069-1003-030 (230V, 50 Hz) UK: 069-1003-040 (230V, 50 Hz) EUR: 069-1003-060 (100V, 50 Hz) JPN: 069-1003-070
Frequency Response:	20 Hz to 40 kHz \pm 1 dB (at send output) 30 Hz to 30 kHz \pm 1 dB (at speaker output, with processor threshold exceeded)
Distortion:	< 0.1%, 20 Hz to 20 kHz, 1dB below rated output
Signal to Noise Ratio:	> 80 dB @ 1W, "A" WTD
Power Output:	80W continuous average power, 4 Ω , both channels driven with THD < 1%
Input Impedance:	(Channels 1-2-3 XLR and 1/4") "Mic" switch position: 2 k Ω "Line" switch position: 66 k Ω (Phono Channel 1/4") 78 k Ω
Max. Input Level:	Mic: -7 dBu Line: 30 dBu Stereo: 26 dBu
Return Input Impedance:	47k Ω
Fuse type:	T4AH, 250V
Passport System:	Width: 610 mm (24 in.) Height: 541 mm (18 in.) Depth: 254 mm (10 in.) Weight: 11.83 kgs (26 lbs)
Speakers:	Width: 245 mm (9.65 in.) Height: 439 mm (17.5 in.) Depth: 241 mm (9.5 in.) Weight: 3.3 kgs (7.25 lbs)
Power Tower:	Width: 254 mm (10 in.) Height: 451 mm (18 in.) Depth: 178 mm (7 in.) Weight: 5.23 kgs (11.5 lbs)
Tower Footprint:	241 x 298 mm (9.5 x 11.75 in.)
Microphone:	Dynamic Cardioid, balanced
Microphone Cable:	XL -Male to XL-Female, 6 m (20 feet)
Speaker Cables:	1/4 in. to 1/4 in., 9 m (30 feet)

0 dBu is referenced to 0.775 volts rms

Product specifications are subject to change without notice



SERVICE NOTES

The following describes the procedure to dismantle the P-80 Cabinets.

STEP A: P-80 CABINETS

- A1. Unscrew four M4 machine screws on each side of the left and right hatches.
- A2. Unscrew two M3 pan-head machine screws on the handle cover and detach it.
- A3. Place the unit upside down. Unscrew eight M4 self-tapping screws off the foot standers.
- A4. Detach the foot standers. There are six M3 self-tapping screws in the middle portion.
- A5. Unscrew three M3 self-tapping screws located on the right-hand-side.
- A6. Place the unit in the normal position.
- A7. Locate the four M3 and two M4 self-tapping screws on the top and unscrew them.
- A8. Separate the left and right cabinets.
- A9. Locate the UHF and VHF antennas on the right and left cabinets respectively.
- A10. De-solder both antennas.
- A11. Unscrew three M3 self-tapping screws on left and right side panels of the tower metal assembly.
- A12. Unscrew eight M2.6 and six M3 self-tapping screws.
- A13. Detach the left and right metal side panels.
- A14. Detach the 8-pin antenna connector.
- A15. Detach the top metal cover.
- A16. Unscrew seven M3 self-tapping screw on the rear panel
- A17. Detach all connectors.
- A18. The procedure is completed.

STEP B: P-80 MIXER PCB

- B1. Detach 14 knobs and their nuts.
- B2. Detach the Reverb PCB assembly.

- B3. Unscrew nine M3 machine screws from the mixer PCB assembly.
- B4. Detach all connectors.
- B5. The procedure is completed.

STEP C: P-80 DSP REVERB PCB

- C1. Detach all connectors.
- C2. The procedure is completed.

STEP D: P-80 INPUT PCB

- D1. Unscrew six screws and nuts from the front panel.
- D2. Detach all connectors.
- D3. The procedure is completed.

STEP E: P-80 POWER AMP PCB

- E1. Unscrew four screws connecting the heatsink to the side brackets (two on either side of tower).
- E2. Detach all connectors.
- E3. The procedure is completed.

STEP F: P-80 SMPS PCB

- F1. Unscrew three screws from the front panel.
- F2. Detach all wiring and connectors.
- F3. Unscrew six screws from the top cabinet of the SMPS.
- F4. Unscrew three screws from the bottom cabinets of the SMPS.
- F5. Detach the spacer from the wiring of the SMPS.
- F6. Unscrew the earthing M4 nut.
- F7. Detach the mains connector from the AC inlet.
- F8. Unscrew five screws from the SMPS PCB assembly
- F9. The procedure is completed.



PCB EXCHANGE POLICY

Parts marked with a single asterisk (*) in the Part Lists are not field replaceable. If a failure due to one of these components is detected, please con-

tact the FMIC Customer Service Department to order the complete PCB Assembly.

CIRCUIT DESCRIPTION

This section provides concise information about new or unusual circuitry designs incorporated into this amplifier model. The purpose is to aid the service technician by providing insight into the design areas most likely to become obstacles in troubleshooting. Information is focused for its effective use while maintaining the security of Fender® proprietary information wherever possible.

The P-80 consists of the following modules.

1. Mixer Section
2. Digital Reverb Section
3. Signal Processor Circuit and System EQ Circuit
4. Power Amplifier
5. Switch Mode Power Supply Unit (SMPSU)

Mixer Section

The mixer section is mainly made up of operational amplifiers as gain stages and therefore a technical description will not be used here. Following is a basic circuit description to familiarize you with the layout of the circuit.

The Mic/line section is made up of 3 microphone / line inputs each with a first stage preamplifier for balanced or unbalanced inputs (locate on the mixer board). Line inputs can operate as either balanced or unbalanced if TRS or TR 1/4" jacks are used respectively. Gain selection of 1dB/+30dB is made by switching a different value resistor in the input stage. At this point on channel one, the signal is picked off for the VIP control ducking circuit made up of U1B. After the input stage there is one knob for contour control, followed by an auto-pad level control where the signal splits off into the rev/aux bus and main signals with the main signals going to a pan circuit. Here the main signal is split between

left and right channel signal bus. Channel three also has an additional input via a pair of RCA connectors where the signals are summed into mono which may be used as an auxiliary audio signal input. This circuit consists of an auto-pad level control, low frequency and high frequency tone controls, and a rev/aux send control.

The audio bus is connected to three FETs that perform ducking of the signals on the bus with the exception of channel one which is the drive circuit for the VIP ducking circuit. This function is provided by U1B.

Bus signals are buffered by U8A and drive the tape out connections and the main master level control circuitry made up of U9A. Rev/Aux signals are buffered by U12B and feed the mono aux send output. The main level control is auto-pad configured and drives the speaker EQ circuitry made up of U10A. Note: Channel 1 Mic/Line reverb function will be affected by VIP control making announcements on Channel 1 dry.

The mixer board also contains part of the signal processor circuit and the system EQ circuit for the power amplifier. These circuits are an integral part of the power amplifier and appear after the return signal path.

These circuits will all be discussed later in this document.

Digital Reverb Section

The DSP Reverb PCB module receives the input REV/AUX signals at pin 4 of connector CN401. The



PASSPORT[®] P-80

(This is the model name for warranty claims)

DSP Reverb's IC's consist of U404 (AL1101 ADC), U405 (AL1201 DAC), and U406 (AL3201B). The outputs from U405 are fed to U402B and then buffered by U402A before feeding back to pin 6 of CN 401.

Signal Processor Circuit and System EQ Circuit

The signal processor is partially located on the mixer board but is an integral part of the power amplifier section. The operation of this circuit is performed by filtering the signal from U11A which drives the bases of Q5 and Q7 to control the voltage level at FETs Q4 and Q6 respectively. This in turn changes the filter characteristics of circuits which at low levels boosts the low and high frequencies of the signal. At high signal levels with the gate voltages approaching or at 0v, the circuit lowers the boost of the low frequencies in response. This circuit is post aux return and therefore does not modify the response of the signal at the aux send outputs.

Power Amplifier

Note: In cases where the amplifier circuits are identical between the left and right channel. Only components related to the left channel will be discussed for simplicity.

The first stage of the power amplifier is made up of op amp U201A that acts as the input buffer and muting circuit for minimization of turn on/off pops. Q202 in balance with the input resistors of this circuit are designed to provide a deep muting effect. This circuit will be called into action if the temperature of the heat sink also rises above 80 degrees Centigrade. (Typical HS temperature is around 50 for normal operation). The output of the first stage feed trimmer resistor VR201 which are part of the balanced input section of low noise op-amp U203A which sets the amplifier gain (factory set at approximately 30.5dB). The output of the second stage directly drives the biased gates of lateral power FETs Q205 and Q208.

Speaker short circuit protection is provided by U203B. This is accomplished when the output is shorted to ground, the normal differential signal applied to U203B is absent at the negative terminal while at the same time, the second stage is now forced into open loop gain. The drive signal is integrated into C211 forcing a positive voltage at the output of U203B that pulls the gate of FET Q207 into conduction from its previous negative bias off point, nulling the output of U203A. With the output of U203A minimized the output current of the amplifier is minimized until the short is removed. At this time, C211 will discharge allowing normal operation of the amplifier. **Note:** Some small DC offset will be present when the amplifier is in the short circuit protect mode.

The power amplifier board also provides the $\pm 15\text{v}$ for the mixer/reverb boards as well as the supply for the SMPSU FAN and the LED PCB which indicated power. The power amplifier board is also connected to the GM type fuse holder and aux DC power input connector.

Switch Mode Power Supply Unit (SMPSU)

This unit is not recommended to be serviced in the field except by replacing the complete module as a total assembly.

The following information is provided to assist in the trouble shooting of the unit. Please note that the mains fuse must be replaced with exactly the same grade of fuse for safety regulations and to avoid risk of damage and potential fire hazard.

The mains input to the SMPSU allows for operation from 100V to 240V. The output of the SMPSU is $\pm 36\text{V}$ DC for the main power supply rails of the power amplifier. The unit also has connectors for mains power input, mains power switch and chassis, earth and signal grounds.

Service Tip: You can connect to the aux DC input (with GM fuses installed) to test the output voltage to the rails before you open the set for service to get an indication of a possible power supply fault as it is connected to the rail output. Do not short these terminals!



PASSPORT® P-80

(This is the model name for warranty claims)

The SMPSU incorporates protection circuits other than the fuses including over current protection. All parts contained in the SMPSU should be considered to be safety parts and should be replaced with only exact where service can be provided by properly licensed and trained repair technicians. This includes the dust filter as well as it has a fire hazard rating. ***Please be aware that voltages contained in this module are deadly.***

Service Notes on Changes and Updates

Refer to the mixer schematic diagram of this manual for the following change. A 0.01uF mylar film capacitor has been added to the VIP ducking circuit to prevent a slight hum that may be heard as an artifact at the tail of the ducking action. This was mainly detected on UL voltage settings. This capacitor is added at the junction of R18 (1Mega ohm) and D16 and the Source (Ground) of FET Q3 (J112). This modification should be performed on individual units that are listed below by S/N. All other UL units have been modified by the factory.



PASSPORT® P-80

(This is the model name for warranty claims)

.PARTS LIST: MIXER- PCB ASSEMBLY			
QTY	PART #	DESCRIPTION	REFERENCE DESIGNATION
1.0	0074726000	PCB ASSY MIXER	
1.0	REF	FRONT PANEL P80	
4.0	REF	CC 50V 100P 10% RL 5X3	C3-4 C15-16
11.0	REF	CC 50V 27P 10% RL 5X3	C9 C11 C21 C23 C37 C43 C52 C62 C78-80
4.0	REF	CM 100V 0.001UF 10% RL 5x7.5	C20 C41 C83-84
1.0	REF	CM 100V 0.01UF 10% RL 6x7.5	C87
2.0	REF	CM 100V 0.1UF 10% RL 9x11 CENTRALAB	C85-86
2.0	REF	CM 100V 0.0015UF 10% RL 5X7.5	C7 C18
2.0	REF	CM 100V 0.015UF 10% RL 6x9.5	C8 C19
2.0	REF	CM 100V 0.0022U 10% 5x7.5	C63 C67
1.0	REF	CM 100V 0.022UF 10% RL	C42
2.0	REF	CM 100V 0.0047UF 10% RL 5.3X7.5	C54-55
2.0	REF	CE 25V 47U 20% RLR 5X11 ELNA	C47-48
6.0	REF	CE 50V 1U 20% RLR 5x11 ELNA	C6 C10 C22 C35 C39 C82
4.0	REF	CE 50V 2.2uF 20% RL 5x11	C1-2 C13-14
7.0	REF	CE 50V 0.47uF 20% RL 5x11	C5 C17 C49 C51 C53 C61 C75
2.0	REF	CE 50V 0.47U 20% RLR 5X11 ELNA/NCC/MATSUSHITA	C64-65
1.0	REF	CE 50V 4.7uF 20% RL 5x11	C66
1.0	REF	CE 50V 4.7U 20% RLR 5x11 ELNA/NCC/MATSUSHITA	C12
2.0	REF	CE 50V 47uF 20% RL 8x12	C76-77
1.0	REF	PCB MIXER EF040C S/S 94HB 1OZ REV:A P50	
1.0	REF	WAFER JM24182-3P	CN8
4.0	0070067000	PJ6-09-5STEREO JACK W/O NUT 5P	PJ1-2 PJ4 PJ6
2.0	0070068000	MONO JACK PJ6-09-3 W/O NUT DIAMOND	PJ5 PJ7
8.0	REF	WASHER METAL M3X0.3X4 WZ	MIX/RCA
2.0	REF	FIBRE WASHER M3X0.8X8MM	MIXER PCB
6.0	REF	S-TITE 3X8 (BLK)	MIC JACK
15.0	REF	SCREW B-TITE BIND HEAD M3X8 CROSS-RECESS BZ	LED PCB RCA JACK U-BAR MIXER PCB
3.0	REF	SW COVER 2751-11-0	SW-SLIDE
9.0	REF	IC TL072CP DUAL FET OP AMP TI	U2 U4 U6-12
2.0	REF	IC LM833N NS	U1 U3
1.0	REF	IC TL072CDR DUAL J-FET INPUT OP-AMP (SMD)	U13
1.0	REF	SHIELD PLATE 4132-4741-0 P150	

* Non-serviceable part. Replace complete parent assembly. See PCB EXCHANGE POLICY section above.

shaded Unique Fender® part. Order directly from the FMIC Parts Department.

shaded + * Access to this part or assembly is controlled. Please contact the FMIC Customer Service Department.

** Safety Requirement part. Replacement must match Safety Agency...-Value, if specified -Type, if specified -Approval Mark(s) if on part.

shaded + ** Both a unique Fender® part and a Safety Requirement part as defined above.



PASSPORT® P-80

(This is the model name for warranty claims)

.PARTS LIST: MIXER- PCB ASSEMBLY			
QTY	PART #	DESCRIPTION	REFERENCE DESIGNATION
1.0	0074733000	MIC JACK BKT 2751-9-0	
6.0	REF	WASHER M13 4132-5041-0	PHONE JACK
6.0	REF	T-NUT M12 4132-5031-0	PHONE JACK
2.0	REF	U-BRACKET	
4.0	REF	CS-0813 PCB SUPPORT	
1.0	0070536000	KNOB A 1463-8301-1 P150	
13.0	0070537000	KNOB B 1463-8401-1 P150	
1.0	REF	SHEET FRONT FOR P50	
6.0	REF	RCF 1/8W 10K 5% AT	R11 R65 R80 R90 R129 R138
9.0	REF	RCF 1/8W 100K 5% AT	R20 R38 R76 R86 R92 R95 R122 R139 R145
6.0	REF	RCF 1/8W 1M 5% AT	R17 R19 R108 R132-133 R135
2.0	REF	RCF 1/8W 110K 5% AT	R82 R120
3.0	REF	RCF 1/8W 2.2M 5% AT	R16 R107 R109
11.0	REF	RCF 1/4W 1K 5% ATS	R1-3 R6 R15 R25-27 R30 R88 R148
1.0	REF	RCF 1/4W 11K 5% ATS	R131
6.0	REF	RCF 1/4W 12K 5% ATS	R9 R14 R33 R37 R102 R105
4.0	REF	RCF 1/4W 27K 5% ATS	R67 R69 R71 R73
11.0	REF	RCF 1/4W 33K 5% ATS	R4-5 R7-8 R28-29 R31-32 R93-94 R143
9.0	REF	RCF 1/4W 39K 5% ATS	R10 R13 R34 R36 R100-101 R123 R130 R141
3.0	REF	RCF 1/4W 470R 5% ATS	R22 R24 R136
1.0	REF	RCF 1/4W 56K 5% ATS	R124
5.0	REF	RCF 1/4W 6.8K 5% ATS	R83 R103-104 R106 R121
8.0	REF	RCF 1/4W 82K 5% ATS	R12 R35 R40 R42 R77 R81 R126 R128
1.0	REF	RMF 2W 3.3R 5% ATS METAL OXIDE	R140
6.0	0070083000	VR RK14K1240 100KBx2 W/C.C (ALPS)	VR1 VR6 VR15-16 VR18 VR20
8.0	0070082000	VR RK14K1240 (100KBx2) ALPS	VR2-4 VR7-8 VR14 VR21-22
11.0	REF	DIODE 1N4148TA NS	D1-8 D13 D15-16
1.0	REF	TR FET J112	Q4
4.0	REF	TR FET J112-TR1-E3 RLT	Q1 Q3 Q8-9
1.0	REF	TR MPS A56 VCE 80V NS	Q5
1.0	REF	TR MPS A56 VCE 80V NS RL T	Q11
3.0	0070443000	SW-SLIDE 2P2T SS2214RG9 Y.S.C.	SW1-2 SW4
1.0	REF	CN ASSY UL1007 #26 L=80 15P F/M P2.5	CN1
1.0	REF	CN ASSY UL2547 #26 L=170 3P M/M P2.5	CN3
1.0	REF	CN ASSY UL2547 #26 L=210 3P M/M P2.5	CN4

* Non-serviceable part. Replace complete parent assembly. See PCB EXCHANGE POLICY section above.

shaded Unique Fender® part. Order directly from the FMIC Parts Department.

shaded + * Access to this part or assembly is controlled. Please contact the FMIC Customer Service Department.

** Safety Requirement part. Replacement must match Safety Agency...-Value, if specified -Type, if specified -Approval Mark(s) if on part.

shaded + ** Both a unique Fender® part and a Safety Requirement part as defined above.



(This is the model name for warranty claims)

.PARTS LIST: MIXER- PCB ASSEMBLY			
QTY	PART #	DESCRIPTION	REFERENCE DESIGNATION
1.0	REF	CN ASSY UL2547 #26 L=250 3P F/M P2.5	CN5
1.0	REF	CN ASSY UL1007 #26 L=180 2P F/M P2.5	CN6
1.0	REF	CN ASSY UL1007 #18 L=100 2P F P3.68	CN7

.PARTS LIST: RCA- PCB ASSEMBLY			
QTY	PART #	DESCRIPTION	REFERENCE DESIGNATION
1.0	0074728000	PCB ASSY RCA	
1.0	0074734000	4RCA JACK HSP-204V-03 GP	RJ1
1.0	REF	WAFER 15P ST. P=2.5 COULOMB	CN1
2.0	0070078000	MIC JACK SVP561P-R	MJ1-2

.PARTS LIST: DSP REVERB- PCB ASSEMBLY			
QTY	PART #	DESCRIPTION	REFERENCE DESIGNATION
1.0	0074508000	PCB ASSY DSP REVERB	
19.0	REF	CC 50V 0.1uF 10% 0805 1.2X2.0	C405-406 C412-419 C422-427 C431-432 C434
2.0	REF	CC 50V 220pF 10% 0805 1.2x2.0	C407 C409
1.0	REF	CC 50V 470pF 10% 0805 1.2X2.0	C408
1.0	REF	CC 50V 4700pF 10% 0805 1.2x2.0	C404
1.0	REF	CE 50V 1UF 20% RLT 5X11 SHOEI	C420
7.0	REF	CE 50V 10UF 20% RLT 5X11 SHOEI	C401-403 C410-411 C430 C433
2.0	REF	CE 50V 47UF 20% RLT 6.3X11 SHOEI	C428-429
1.0	REF	JM24182-6P WAFER	CN401
1.0	REF	X'TAL 12.288MHZ +/- 30PPM 49U	XL401
1.0	REF	IC L78L05ACZ ST	U407
3.0	REF	IC NJM2068M-#ZZZB DUAL OP AMP	U401-403
1.0	REF	IC AL3201BG WAVEFRONT DIGITAL RE- VERB	U406
1.0	REF	IC AL1201G WAVEFRONT DAC	U405
1.0	REF	IC AL1101G WAVEFRONT ADC	U404
1.0	REF	RMG 1/10W 1K 5% 0805	R417
8.0	REF	RMG 1/10W 10K 5% 0805	R408 R410-411 R416 R418-421
1.0	REF	RMG 1/10W 100K 5% 0805	R401
3.0	REF	RMG 1/10W 220R 5% 0805	R406-407 R413
4.0	REF	RMG 1/10W 2.2K 5% 0805	R402-405
2.0	REF	RMG 1/10W 4.7K 5% 0805	R409 R412

* Non-serviceable part. Replace complete parent assembly. See PCB EXCHANGE POLICY section above.

shaded Unique Fender® part. Order directly from the FMIC Parts Department.

shaded + * Access to this part or assembly is controlled. Please contact the FMIC Customer Service Department.

** Safety Requirement part. Replacement must match Safety Agency...-Value, if specified -Type, if specified -Approval Mark(s) if on part.

shaded + ** Both a unique Fender® part and a Safety Requirement part as defined above.



.PARTS LIST: DSP REVERB- PCB ASSEMBLY			
QTY	PART #	DESCRIPTION	REFERENCE DESIGNATION
1.0	REF	RMG 1/10W 47K 5% 0805	R415
1.0	REF	RMG 1/8W 10R 5% 1206	R414
1.0	REF	CN ASSY UL1007 #26 L=180 2P F/M P2.5	CN402

.PARTS LIST: POWER AMP- PCB ASSEMBLY			
QTY	PART #	DESCRIPTION	REFERENCE DESIGNATION
1.0	0074727000	PCB ASSY POWER AMP	
5.0	REF	CC 50V 0.1U 20% RLF	C215-216 C219-220 C224,
1.0	REF	CC 50V 0.22UF 20% RLF MONO	C208
2.0	REF	CC 50V 47P 10% RL 5X3	C203 C207
1.0	REF	CC 1KV 1000PF 10% RL Y5P 5X5	C214
1.0	REF	CM 100V 0.022UF 10% RL	C210
1.0	REF	CM 100V 0.22UF 10% RL 11.5x13	C211
1.0	REF	CE 16V 22uF 20% RL 5x11	C206
2.0	REF	CE 50V 1UF 20% RLT 5X11 SHOEI	C202 C209
1.0	REF	CE 50V 10UF 20% RLT 5X11 SHOEI	C223
2.0	REF	CE 50V 100uF 20% RL 8x12	C217-218
2.0	REF	CE 50V 2.2uF 20% RL 5x11	C201 C225
5.0	REF	CE 50V 47UF 20% RLT 6.3X11 SHOEI	C205 C212-213 C221-222
1.0	REF	PCB POWER AMP/LED D/S FR4 10Z REV:C P80	
1.0	REF	JM2422-2M WAFER	CN201
2.0	REF	JM2422-4M WAFER	CN202-203
5.0	REF	JM24182-2P WAFER	CN205A CN206 CN208-209 CN402A
1.0	REF	WAFER JM24182-3P	CN204
2.0	0070311000	MONO JACK PJ6-09-3 W/O NUT DIAMOND	PJ201-202
2.0	REF	METAL WASHER M3X0.5X8MM BZ	2SK1058/J162
7.0	REF	WASHER SPRING M3X0.9X5.5 BZ	HEAT SINK REAR PANEL
2.0	REF	SCREW MACHINE PAN M3X10 CROSS-RECESS BZ	H.S/BRASS
2.0	REF	SCREW BH M3X 5 MM BZ CROSS	PCB/BRASS
4.0	REF	SCREW TAP-BT BH M2.6X 6 MM BZ CROSS	FUSE HOLDER
6.0	REF	SCREW D3X6 S-TITE BH,BK	REAR PANEL
8.0	REF	SCREW B-TITE PH M3X 12 MM YZ CROSS W/ WASHER	2SK1058/J162 TH/SW BKT MTG. BKT U202
1.0	REF	SCREW B-TITE BIND HEAD M3X8 CROSS-	HEAT SINK

* Non-serviceable part. Replace complete parent assembly. See PCB EXCHANGE POLICY section above.

shaded Unique Fender® part. Order directly from the FMIC Parts Department.

shaded + * Access to this part or assembly is controlled. Please contact the FMIC Customer Service Department.

** Safety Requirement part. Replacement must match Safety Agency...-Value, if specified -Type, if specified -Approval Mark(s) if on part.

shaded + ** Both a unique Fender® part and a Safety Requirement part as defined above.



.PARTS LIST: POWER AMP- PCB ASSEMBLY			
QTY	PART #	DESCRIPTION	REFERENCE DESIGNATION
		RECESS BZ	
1.0	REF	MICA T-400 8302 18X12.7M T0220	U202
2.0	REF	MICA T-400 T03P 25X20M T O-3P	2SK1058/J162
1.0	REF	IC TL072CP DUAL FET OP AMP TI	U201
1.0	REF	IC LM317HVT/NOPB REGULATOR	U202
1.0	REF	IC BA4560 ROHM	U203
1.0	REF	ANTENNA WASHER	HEAT SINK
2.0	REF	2666-12 METAL WASHER M12 X0.5X16MM NI	PHONE JACK
2.0	REF	2666-11 HEXAGON NUT M12	PHONE JACK
1.0	REF	2688-15-0 TH/SW BKT	HEAT SINK
2.0	REF	MTG. BKT 4312-4711-0 P150	HEAT SINK
2.0	REF	BRASS TUBE 2751-10-0 L=9mm	PCB/H.S
1.0	REF	BUSHING TO-220A	U202
2.0	REF	1800-FI GM FUSE HOLDER	
2.0	REF	RCF 1/8W 10K 5% AT	R205 R227
2.0	REF	RCF 1/8W 100K 5% AT	R206 R221
2.0	REF	RCF 1/8W 1M 5% AT	R218 R220
1.0	REF	RCF 1/8W 2.2M 5% AT	R202
2.0	REF	RCF 1/8W 3.3M 5% AT	R215 R217
3.0	REF	RCF 1/8W 390R 5% AT	R207 R224-225
1.0	REF	RCF 1/4W 1K 5% ATS	R212
2.0	REF	RCF 1/4W 1.5K 5% ATS	R232 R234
3.0	REF	RCF 1/4W 15K 5% ATS	R211 R223 R226
2.0	REF	RCF 1/4W 2K 5% ATS	R213 R238
4.0	REF	RCF 1/4W 39K 5% ATS	R201 R203-204 R208
1.0	REF	RCF 1/4W 390K 5% ATS	R216
2.0	REF	RCF 1/4W 4.7K 5% ATS	R233 R237
1.0	REF	RCF 1/4W 56K 5% ATS	R222
1.0	REF	RMF 1/8W 240R 1% AT	R209
1.0	REF	RMF 1/8W 5.1K 1% AT	R231
1.0	REF	RMF 1/4W 1.3K 1% AT	R210
2.0	REF	RMF 2W 3.3K 5% ATS METAL OXIDE	R214 R219
2.0	REF	RMF 2W 3.3R 5% ATS METAL OXIDE	R235-236
3.0	REF	RWR 5W 100R 5% AL	R239-241
3.0	REF	RWR 5W 68R 5% AL	R228-230
1.0	REF	SVR B1K H3 VZ067TL7B 6.3X 6.8 HDK	VR201
2.0	REF	DZ 1/2W 15V 5% TEMIC AT	Z204-205

* Non-serviceable part. Replace complete parent assembly. See PCB EXCHANGE POLICY section above.

shaded Unique Fender® part. Order directly from the FMIC Parts Department.

shaded + * Access to this part or assembly is controlled. Please contact the FMIC Customer Service Department.

** Safety Requirement part. Replacement must match Safety Agency...-Value, if specified -Type, if specified -Approval Mark(s) if on part.

shaded + ** Both a unique Fender® part and a Safety Requirement part as defined above.



PASSPORT® P-80

(This is the model name for warranty claims)

.PARTS LIST: POWER AMP- PCB ASSEMBLY			
QTY	PART #	DESCRIPTION	REFERENCE DESIGNATION
1.0	REF	DZ 1/2W 33V TEMIC AT	Z201
1.0	REF	DZ 1W 12V AT TEMIC	Z206
2.0	REF	DZ 1W 15V AT TEMIC	Z202-203
7.0	REF	DIODE 1N4148TA NS	D201-207
1.0	REF	TR BD140-10 HFE 63-160	Q204
1.0	REF	TR 9013H	Q203
2.0	REF	TR FET J112-TR1-E3 RLT	Q202 Q207
1.0	REF	TR MPSA06 VCE 80V NS RLT	Q201
1.0	REF	TR FET 2SK1058-E HITACH IDS=7A	Q208
1.0	REF	TR FET 2SJ162-E HITACH IDS=7A	Q205
1.0	REF	THERMAL SW 17AM203A5-4	CN207
1.0	REF	HEAT SINK PD150 ROK	2SK1058/J16
1.0	REF	CN ASSY UL1007 #26 L=100 2P M P2.5	CN207
1.0	REF	CN ASSY UL1007 PCE98-033 3 #18 L=90/150/170 4P	CN202

.PARTS LIST: LED- PCB ASSEMBLY			
QTY	PART #	DESCRIPTION	REFERENCE DESIGNATION
1.0	0074725000	PCB ASSY LED	
1.0	REF	PCB POWER AMP 2751-3/-6 REV:D	
1.0	REF	LED RED/GREEN L-937EGW 3MM	LED201
1.0	REF	CN ASSY UL1007 #26 L=220 2P F/M P2.5	CN205

.PARTS LIST: PACKING MATERIALS			
QTY	PART #	DESCRIPTION	REFERENCE DESIGNATION
1.0	0699000000	MICROPHONE P51 FENDER	
1.0	063679000	MANUAL MULTIPLE P-80 6 LANGUAGES	
2.0	0070587000	SPK CABLE MONO 90 ANGLE PLUG L=30FT	
1.0	0074365014	PASSPORT MICROPHONE CABLE	

.PARTS LIST: LATCH LOCKER CASING MATERIALS			
QTY	PART #	DESCRIPTION	REFERENCE DESIGNATION
8.0	REF	WASHER METAL M4X0.8X10 BZ	
8.0	REF	SPRING WASHER M4X0.8X6.5 MM BZ	
8.0	REF	SCREW S-TITE 4X16 PH BLK ZINC	
8.0	REF	C-PIN 4132-4691-0 P-150	

* Non-serviceable part. Replace complete parent assembly. See PCB EXCHANGE POLICY section above.

shaded Unique Fender® part. Order directly from the FMIC Parts Department.

shaded + * Access to this part or assembly is controlled. Please contact the FMIC Customer Service Department.

** Safety Requirement part. Replacement must match Safety Agency...-Value, if specified -Type, if specified -Approval Mark(s) if on part.

shaded + ** Both a unique Fender® part and a Safety Requirement part as defined above.



.PARTS LIST: LATCH LOCKER CASING MATERIALS			
QTY	PART #	DESCRIPTION	REFERENCE DESIGNATION
4.0	REF	LATCH BKT 4132-4681-0 P-150	
4.0	REF	TORSION SPRING-LATCH 2751-5-0	
4.0	REF	LATCH 1464-3500-0 P150	
4.0	0070564000	LOCKER-LATCH 1464-3600-1 P150	QUICK REPAIR ASSEMBLY

.PARTS LIST: CASING MATERIALS			
QTY	PART #	DESCRIPTION	REFERENCE DESIGNATION
1.0	0074729000	SW MODE POWER SUPPLY	
2.0	0070483000	**FUSE S505-4A TIME DELAY 250V 5x20mm UL/CSA/SEMKO	POWER INLET
1.0	0070267000	**SWITCH ROCKER 2PIT	SW301
1.0	REF	ANTENNA FM 75OHM D1.2X240 PD150 UHF GND	CONSOLE
1.0	REF	ANTENNA FM 75OHM D1.2X120 PD150 PLUS	CONSOLE
1.0	REF	HALO BUSHING 0813C	
4.0	REF	METAL WASHER M3X0.5X8MM BZ	PANEL/MTG.BK
3.0	REF	METAL WASHER M3X0.5X8MM BZ	PANEL/PARTIT
3.0	REF	METAL WASHER M3X0.5X8MM BZ	PANEL/SMPS
2.0	REF	WASHER SPRING M3X0.9X5.5 BZ	FUSE COVER
6.0	REF	WASHER SPRING M3X0.9X5.5 BZ	REAR PANEL
2.0	REF	SCREW FLAT-CS M3X 5 MM B Z CROSS	HANDLE COVER
2.0	REF	ME 4*16 6.8MM BK/RH JH1303-01	HANDLE/CONSO
2.0	REF	SCREW TAP-BT BH M2.6X 6 MM BZ CROSS	DOOR
8.0	REF	TTS SCREW M2.6x8 BH BZ	
2.0	REF	SCREW D3X6 S-TITE BH,BK	FUSE COVER
3.0	REF	SCREW D3X6 S-TITE BH,BK	PANEL/SMPS
6.0	REF	SCREW D3X6 S-TITE BH,BK	REAR PANEL
3.0	REF	SCREW D3X6 S-TITE BH,BK	SIDE PLATE-A
3.0	REF	SCREW D3X6 S-TITE BH,BK	SIDE PLATE-B
2.0	REF	S-TITE 3X8 (BLK)	HINGE
4.0	REF	S-TITE 3X8 (BLK)	PANEL/MTG.BK
3.0	REF	S-TITE 3X8 (BLK)	PANEL/PARTIT
2.0	REF	SCREW B-TITE BIND HEAD M3X8 CROSS-RECESS BZ	PANEL/PARTIT
4.0	REF	B-TITE 3X10MM (BLK.ZN)	HANDLE BKT
8.0	REF	SCREW TAP-C2 BH M4X 10 M M BZ CROSS	FOOT STAND
6.0	REF	SCREW B-TITE BIND M4X14 CS-RECESS BZ	SUPPORT RIB

* Non-serviceable part. Replace complete parent assembly. See PCB EXCHANGE POLICY section above.

shaded Unique Fender® part. Order directly from the FMIC Parts Department.

shaded + * Access to this part or assembly is controlled. Please contact the FMIC Customer Service Department.

** Safety Requirement part. Replacement must match Safety Agency...-Value, if specified -Type, if specified -Approval Mark(s) if on part.

shaded + ** Both a unique Fender® part and a Safety Requirement part as defined above.



PASSPORT® P-80

(This is the model name for warranty claims)

.PARTS LIST: CASING MATERIALS			
QTY	PART #	DESCRIPTION	REFERENCE DESIGNATION
1.0	REF	COVER-TOP EFPAPD150+05CS17	
1.0	REF	PANEL-REAR AUSTRALIA EF043C	
1.0	REF	PLATE-SIDE EFPAPD150+05CS17	
1.0	REF	SIDE PLATE-B 4132-4881-1	
1.0	REF	BKT-SOCKET 4132-4891-0 P150	
2.0	REF	HANDLE BKT 4132-4901-1 P150	
1.0	REF	COMPRESSION SPRING 2751-6-0	
1.0	REF	COVER-10P SK 4132-5131-0	CN606
1.0	REF	COVER SHIELDING	
1.0	0074737000	HANDLE NK740C	
2.0	REF	ENCLOSURE SIDE NK740C	
2.0	REF	FOOT STAND NK740C	
1.0	REF	RIB-INSIDE NK740C	
1.0	0070570000	DOOR 1464-3700-1 P150	
1.0	0070571000	LOCKER-DOOR 1464-3800-0 P150	
2.0	REF	HINGE 1464-4200-0 P150	
2.0	REF	SPRUE CAP(GREY)1464-4810 -0 P150	
2.0	REF	NAME PLATE	
1.0	REF	GASKET-HANDLE 2751-2-A	
1.0	REF	GASKET-TOP 2751-3-A	
1.0	REF	GASKET-BOTTOM 2751-4-A	

.PARTS LIST: REG CASING MATERIALS			
QTY	PART #	DESCRIPTION	REFERENCE DESIGNATION
1.0	REF	2617-12 REV:A WIRELESS PCB	
1.0	REF	T'NAL 2225A-20D 2x10 PIN NELTRON 3.96mm CARD EDGE	CN606
3.0	REF	METAL WASHER M3X0.5X8MM BZ	U601 PCB
3.0	REF	WASHER SPRING M3X0.9X5.5 YZ	U601 PCB
1.0	REF	M3 NUT NI	U601
2.0	REF	SCREW MACHINE PAN M3X12 CROSS- RECESS BZ	CN606
3.0	REF	SCREW M3X10 (BLK)	REG PCB
1.0	REF	MICA T-400 T03P 25X20M T O-3P	U601
1.0	REF	ANT WIRE 2751-13-0	CN603
1.0	REF	BUSHING TO-220A	U601
1.0	REF	SPONGE BAR 2751-12-0	CONSOLE
1.0	REF	RUBBER CABLE BUSHING BLK 6MM	SIDE PLATE-B

* Non-serviceable part. Replace complete parent assembly. See PCB EXCHANGE POLICY section above.

shaded Unique Fender® part. Order directly from the FMIC Parts Department.

shaded + * Access to this part or assembly is controlled. Please contact the FMIC Customer Service Department.

** Safety Requirement part. Replacement must match Safety Agency...-Value, if specified -Type, if specified -Approval Mark(s) if on part.

shaded + ** Both a unique Fender® part and a Safety Requirement part as defined above.

**PASSPORT® P-80**

(This is the model name for warranty claims)

.PARTS LIST: REG CASING MATERIALS			
QTY	PART #	DESCRIPTION	REFERENCE DESIGNATION
1.0	REF	UL1533#26 G/B PCE99-0229 L=60MM 8 POS HOUSING	CN607B
1.0	REF	UL1007#26 R/B PCE99-0200 L=280MM 2 POS HOUSING	CN601
1.0	REF	CONN WIRE 8P #26 UL1533 PCE99-0228 G/B L=253MM	CN607A

.PARTS LIST: SPEAKER CASING MATERIALS			
QTY	PART #	DESCRIPTION	REFERENCE DESIGNATION
1.0	0074731000	SPEAKER BOX QUICK REPAIR ASSY	
1.0	0074730000	SPEAKER STAND PLUG	
2.0	0070371000	P150 SPK 6.5" S-6-4 4OHM 1525-0920-0	
1.0	0074732000	REAR PHONE JACK 5 PIN	
0.4	REF	SHRINKAGE TUBE ID=4MM UL	
1.0	REF	WASHER METAL M9X0.5X14 BZ	
4.0	REF	SCREW BH M6X 25 MM BZ CROSS	
2.0	REF	SCREW B-TITE FLAT-CS M3X10 CS-RECESS BZ	
8.0	REF	SCREW TAP-C2 BH M4X 10 MM BZ CROSS	
1.0	REF	SCREW B-TITE BIND M4X14CS-RECESS BZ	
1.0	0070552000	GRILLE 4132-4781-0 P150	
0.147	REF	O RING 4152-2091-0 NK110C	
1.0	REF	SPRUE CAP(GREY)1464-4810-0 P150	
1.0	REF	GASKET SPEAKER 2751-7-A L=1080mm	
1.0	REF	SPRUE CAP(RED)	
1.0	REF	SPEAKER BOX REAR NK740C	
1.0	REF	SPEAKER WIRE 400mm BLK-B LK/RED	

.PARTS LIST: MISCELLANEOUS MATERIALS			
QTY	PART #	DESCRIPTION	REFERENCE DESIGNATION
1.0	0074735000	TOWER SIDE CABINET A	
1.0	0074736000	TOWER SIDE CABINET B	
1	0070315000	GP UL/IEC POWER CORD (UL/CSA VER) NORTH AMERICA,TAIWAN	
1	0070316000	GP CE/IEC POWER CORD (EURO VER) CONT.EUR/ASIA EXPT HK,CHINA, AUSTRALIA, JAPAN	
1	0070317000	GP BS/IEC POWER CORD (UK/HK) UK,HK	

* Non-serviceable part. Replace complete parent assembly. See PCB EXCHANGE POLICY section above.

shaded Unique Fender® part. Order directly from the FMIC Parts Department.

shaded + * Access to this part or assembly is controlled. Please contact the FMIC Customer Service Department.

** Safety Requirement part. Replacement must match Safety Agency...-Value, if specified -Type, if specified -Approval Mark(s) if on part.

shaded + ** Both a unique Fender® part and a Safety Requirement part as defined above.

**PASSPORT® P-80**

(This is the model name for warranty claims)

1	0070318000	GP CCEE POWER CORD (CHINA) GREAT WALL STD.	
1	0070319000	GP SAA/IEC POWER CORD (AUST/NZ) AUSTRALIA/NEW ZEALAND	
1	0070320000	GP JIS/IEC POWER CORD W/ GND PIN JAPAN	

* Non-serviceable part. Replace complete parent assembly. See PCB EXCHANGE POLICY section above.

shaded Unique Fender® part. Order directly from the FMIC Parts Department.

shaded + * Access to this part or assembly is controlled. Please contact the FMIC Customer Service Department.

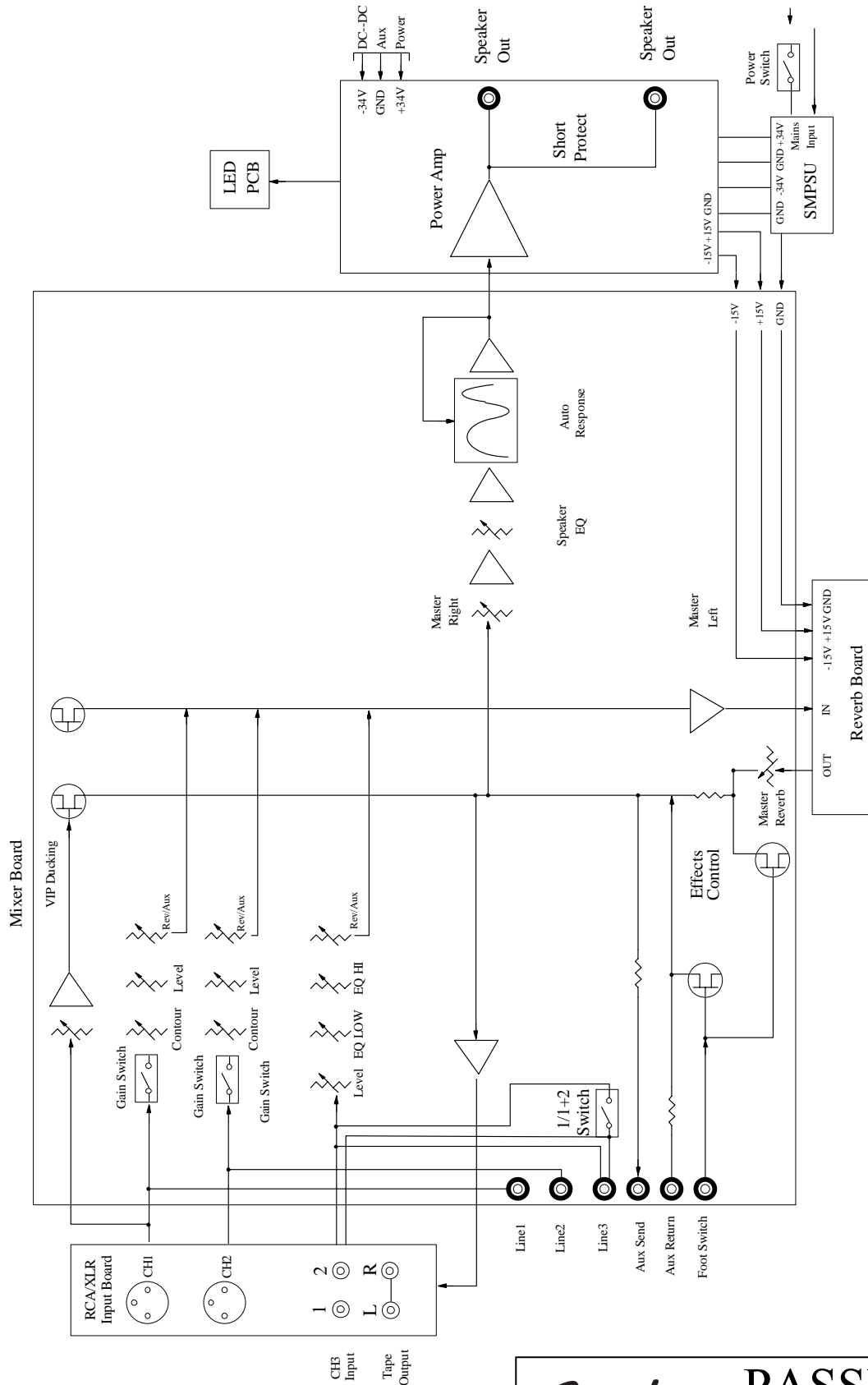
** Safety Requirement part. Replacement must match Safety Agency...-Value, if specified -Type, if specified -Approval Mark(s) if on part.


shaded + ** Both a unique Fender® part and a Safety Requirement part as defined above.

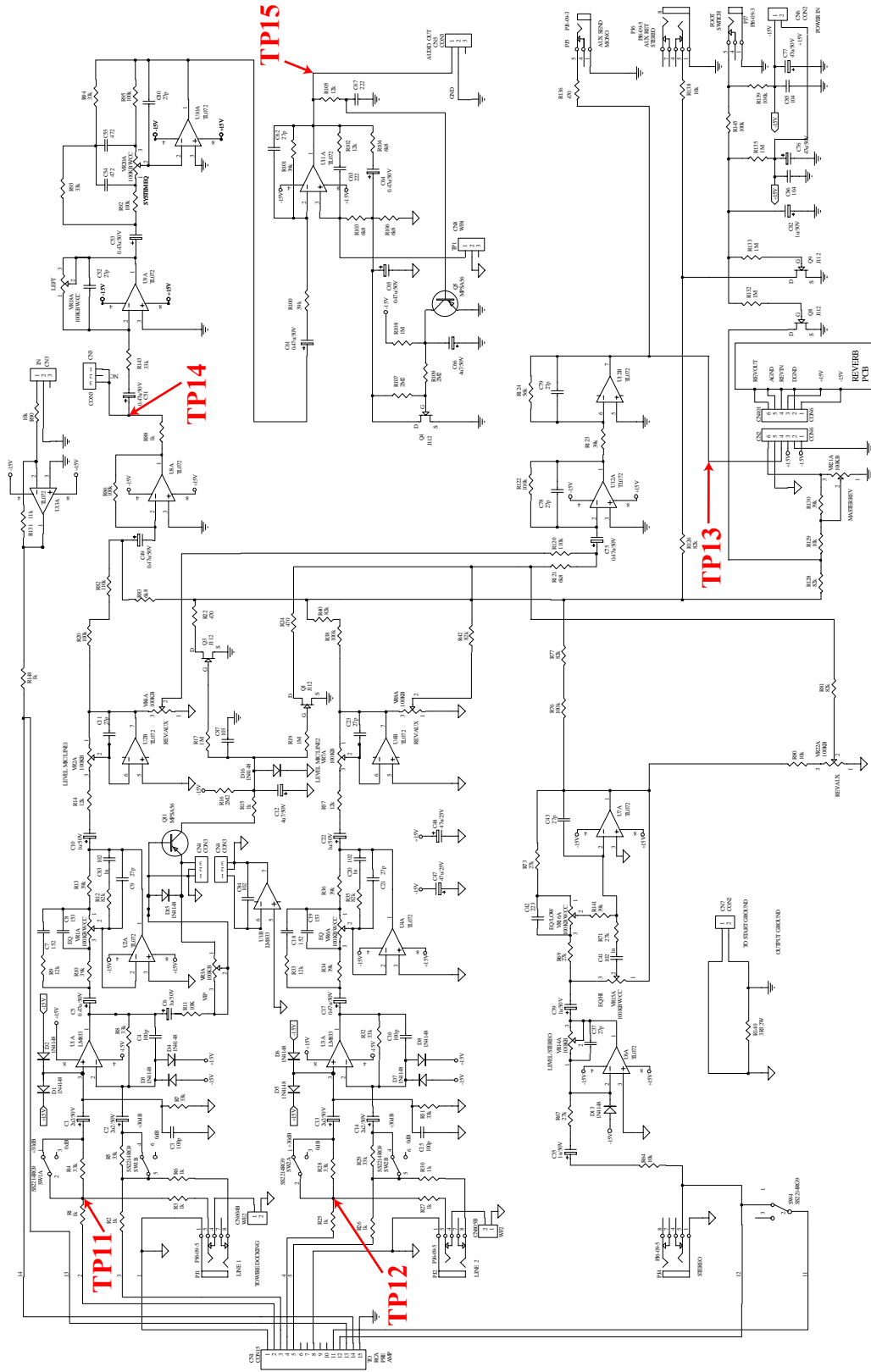


Service Diagram List

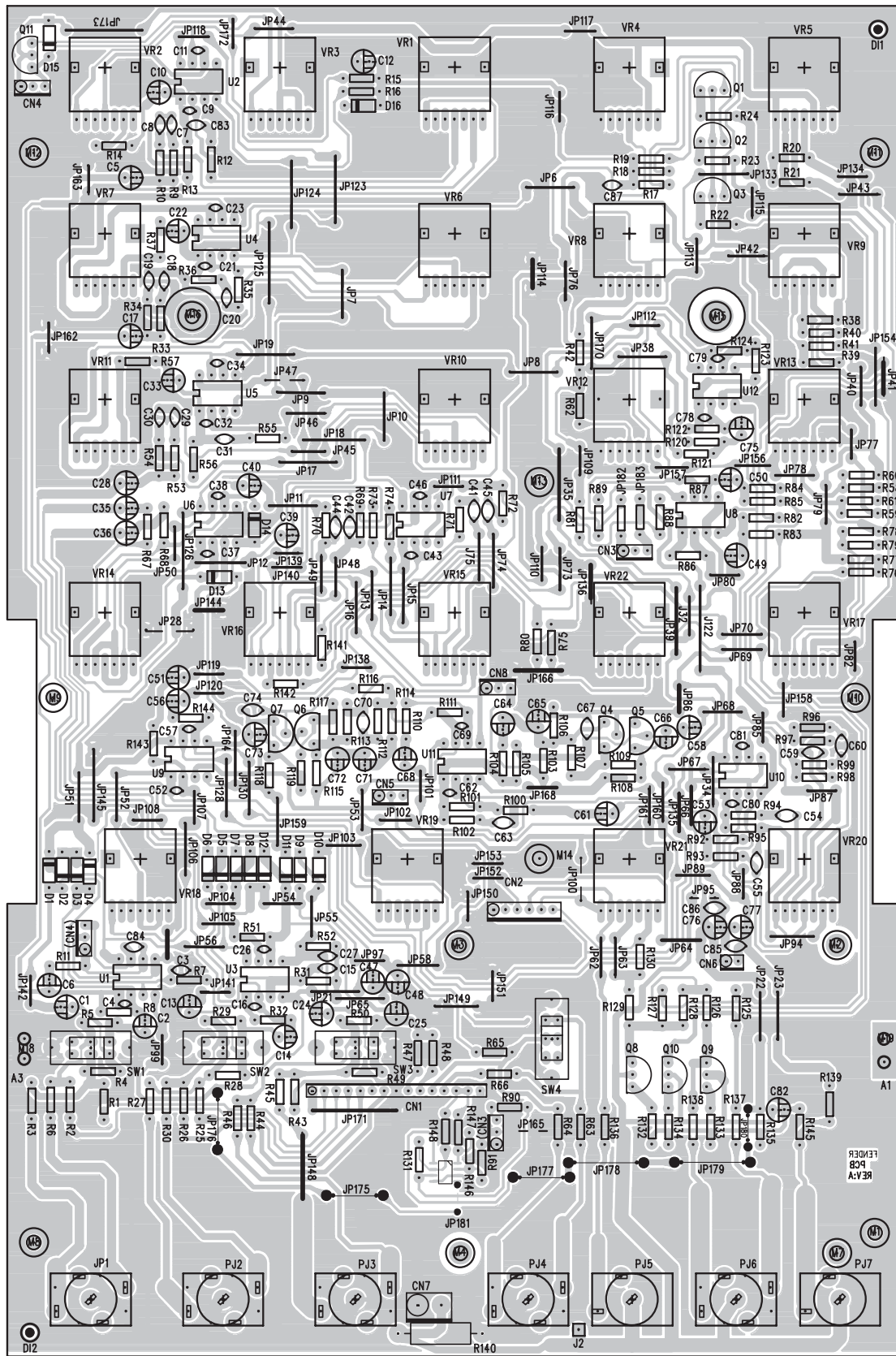
Service Diagram (Schematic)	BLOCK DIAGRAM
Service Diagram (Schematic)	MIXER
Service Diagram (PCB Assembly)	MIXER PCB
Service Diagram (Schematic)	INPUT
Service Diagram (PCB Assembly)	RCA/XLR INPUT PCB
Service Diagram (Schematic)	REVERB
Service Diagram (PCB Assembly)	REVERB PCB
Service Diagram (Schematic)	SMPS
Service Diagram (PCB Assembly)	SMPS PCB
Service Diagram (Schematic)	AMP
Service Diagram (PCB Assembly)	AMP PCB
Service Diagram (PCB Assembly)	LED PCB
Service Diagram (Test Point Information)	TP1-TP20
Service Diagram	WIRING DIAGRAM
Service Diagram (Exploded View)	LATCH ASSY
Service Diagram (Exploded View)	MIXER ASSY
Service Diagram (Exploded View)	SPEAKER ASSY
Service Diagram (Exploded View)	TOWER HOUSING ASSY
Service Diagram (Exploded View)	PACKING ASSY




PASSPORT
 Block Diagram

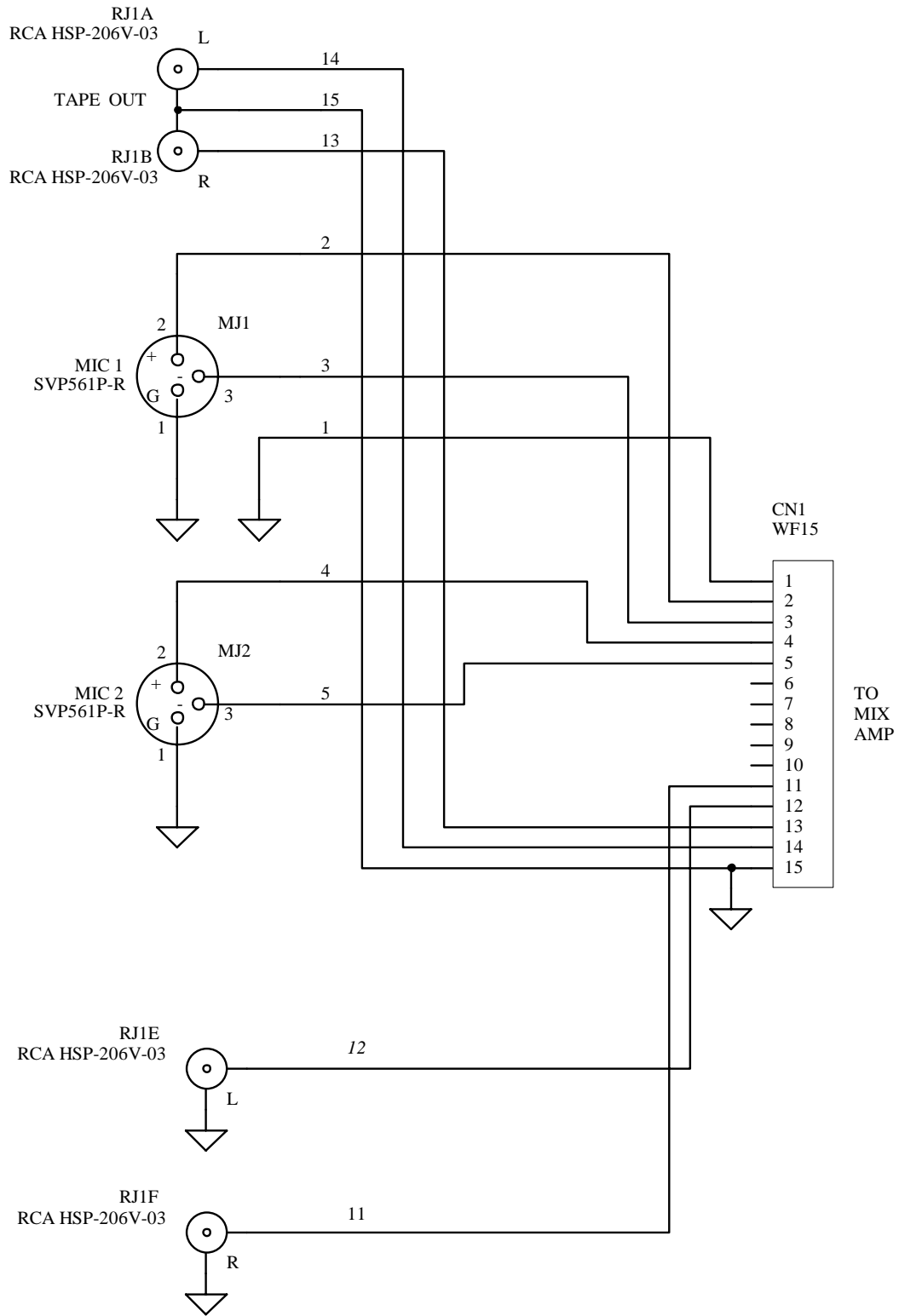


Fender **PASSPORT**
Mixer Schematic Diagram

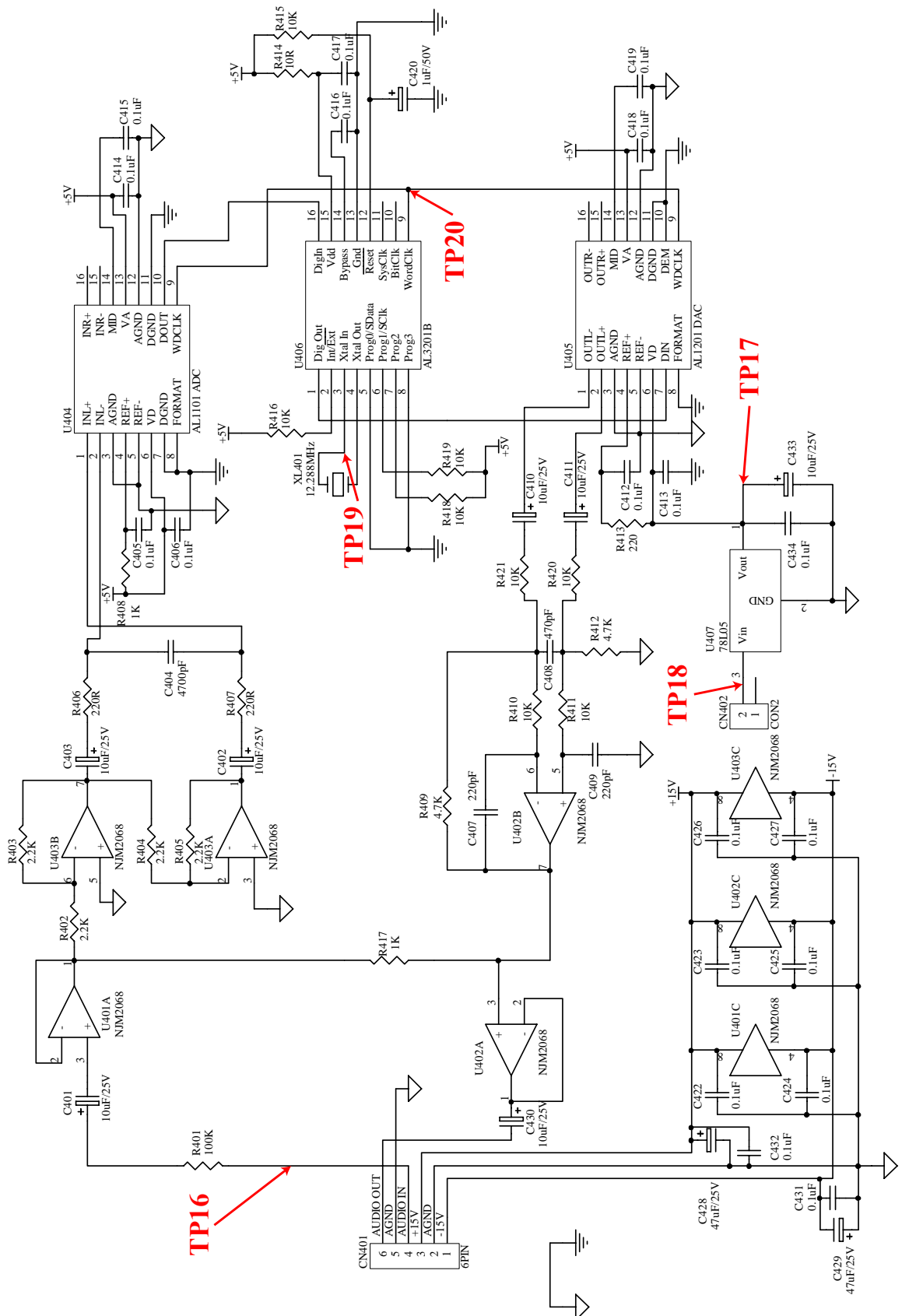


Mixer PCB

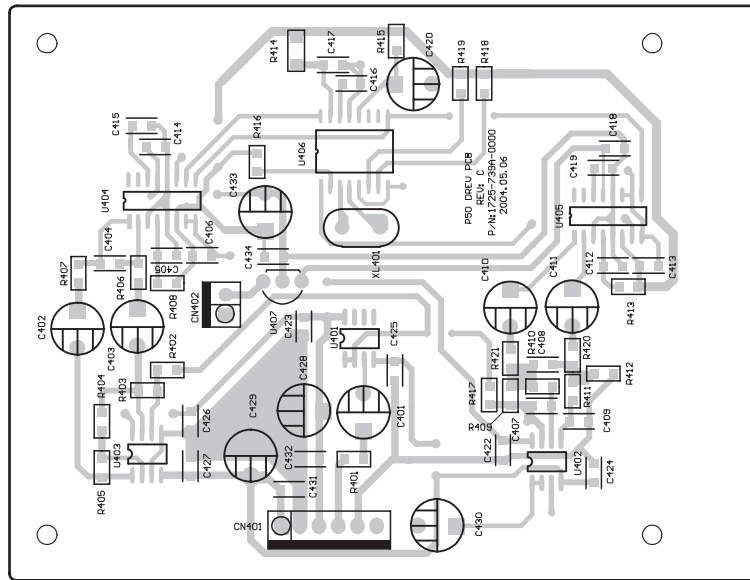
Fender **PASSPORT**
Mixer PCB



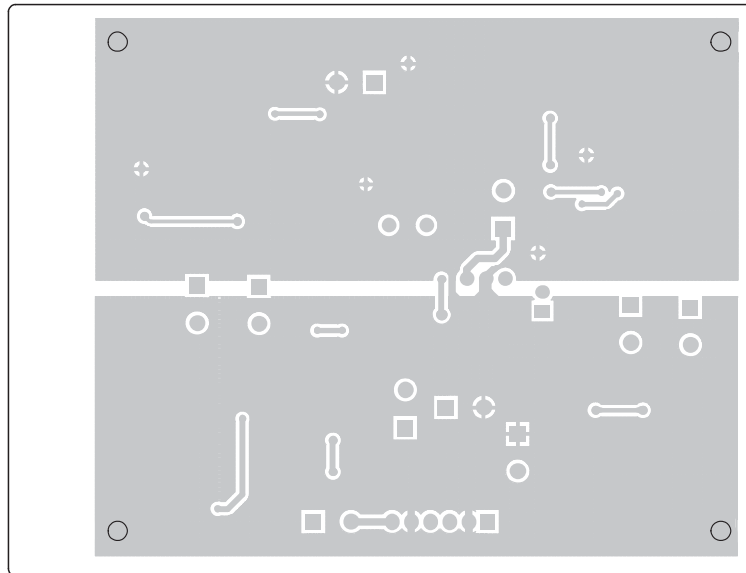
Fender **PASSPORT**
Input Schematic Diagram



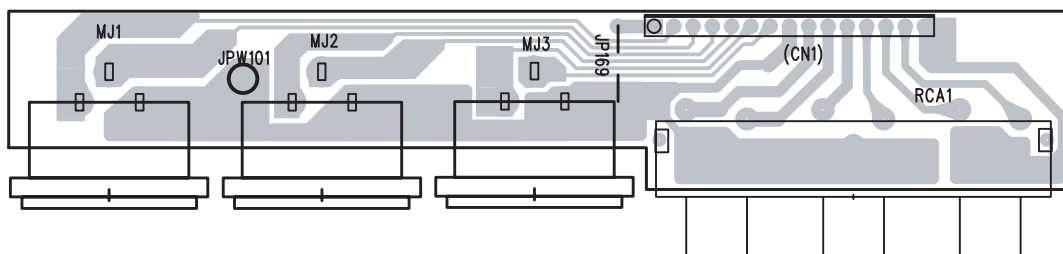
Fender **PASSPORT**
Reverb Schematic Diagram



Digital Reverb PCB Component Side

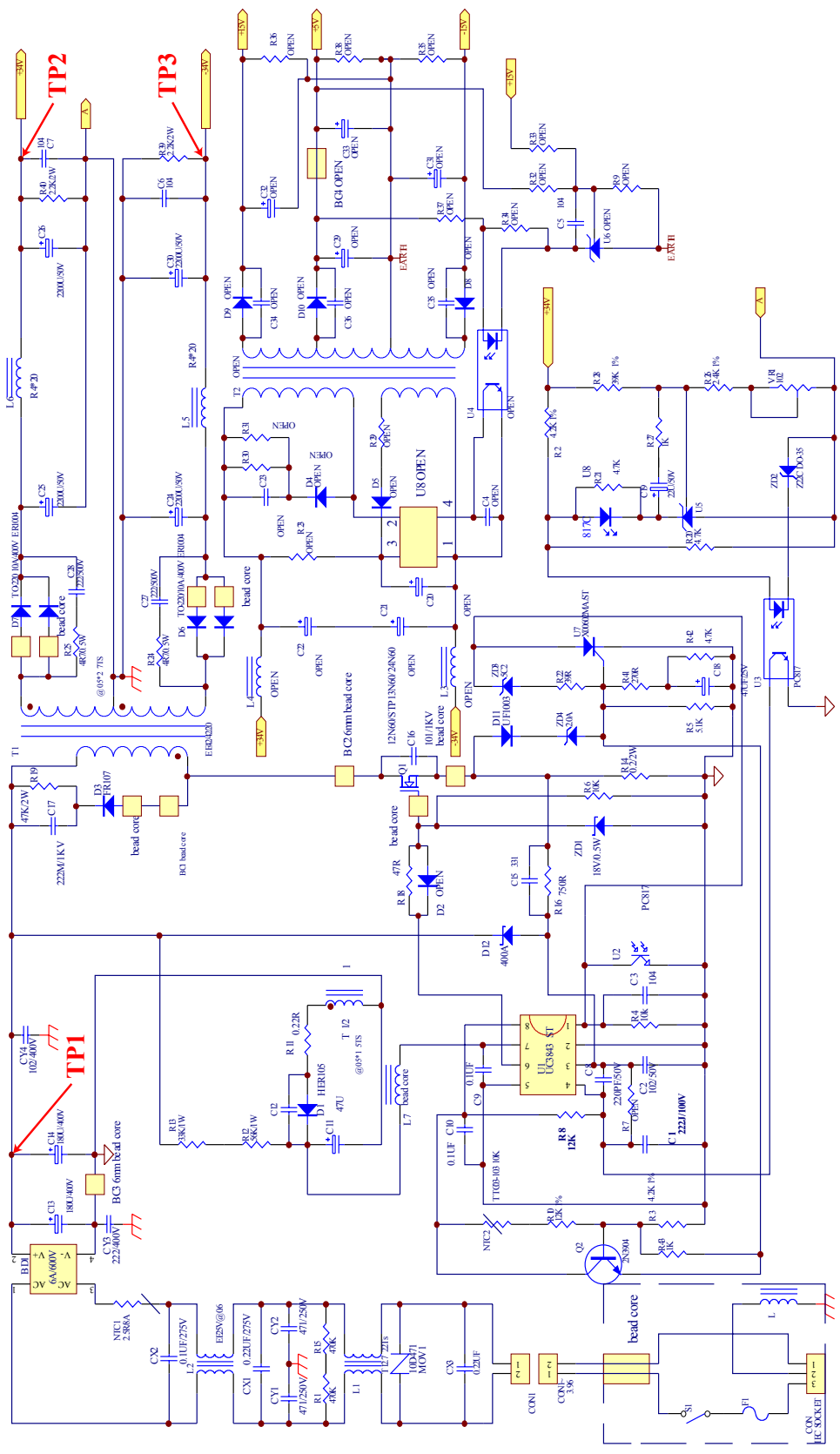


Digital Reverb PCB Copper Side

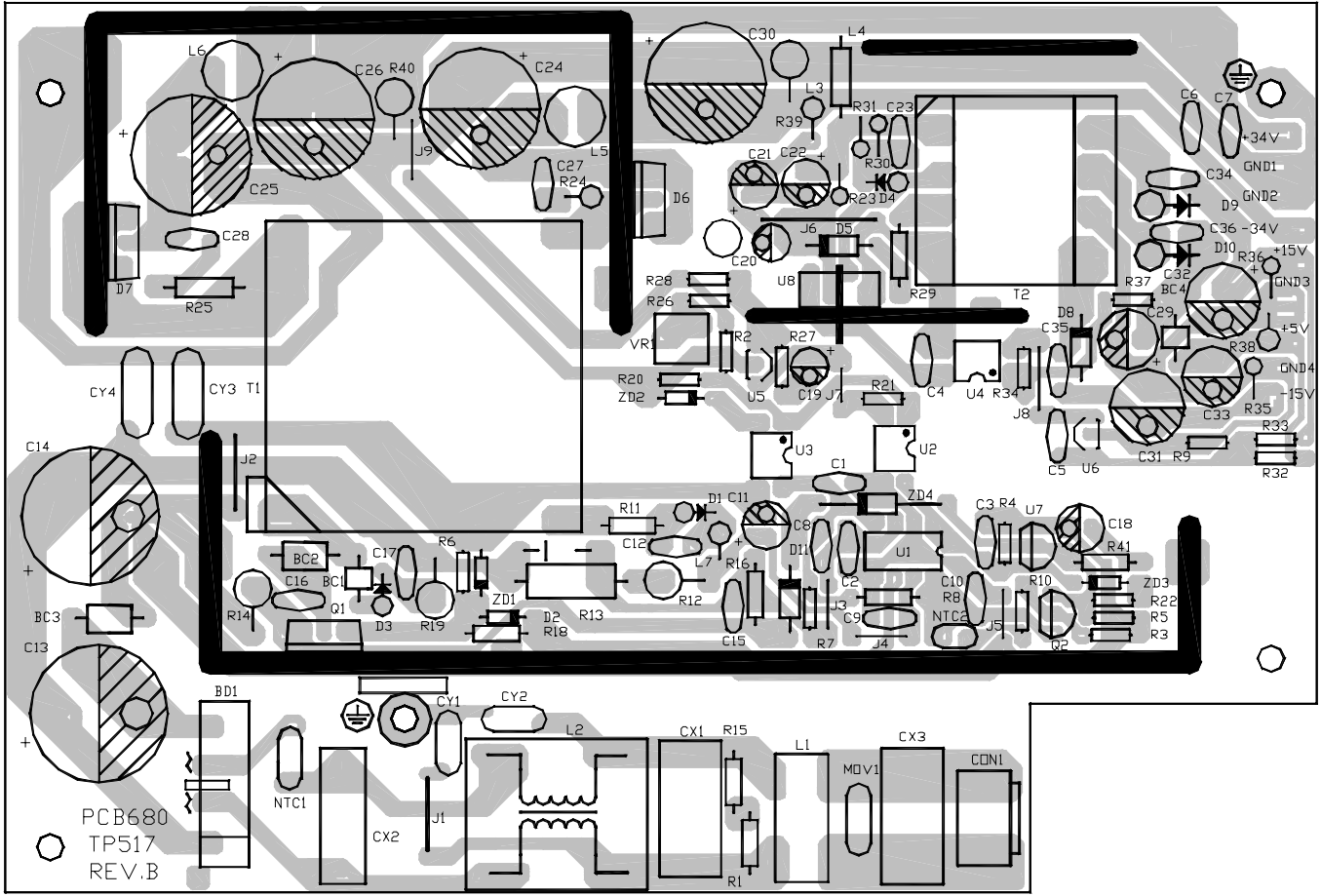


RCA/XLR Input PCB

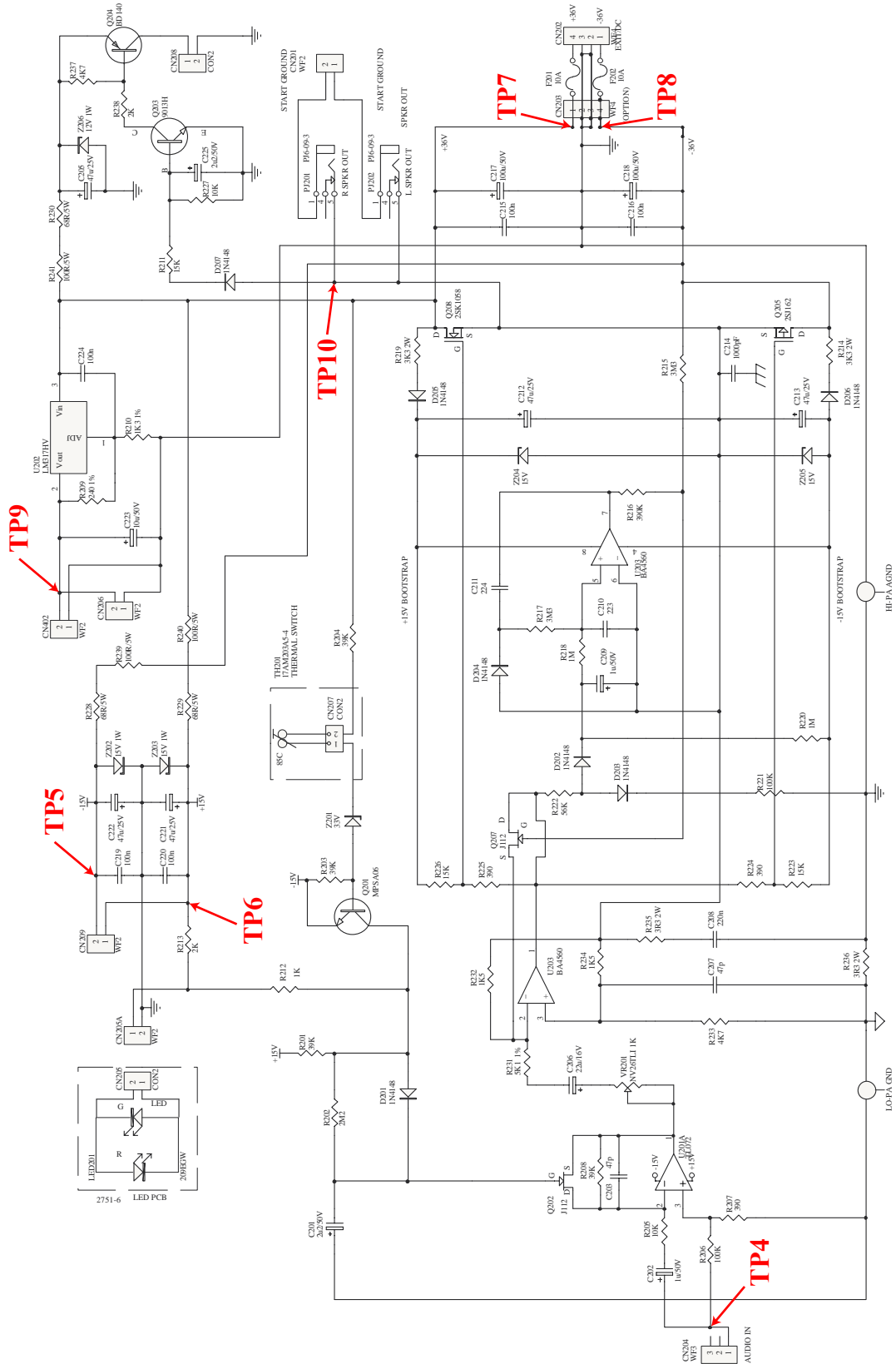
Fender **PASSPORT**
 Digital Reverb / RCA/XLR Input PCB



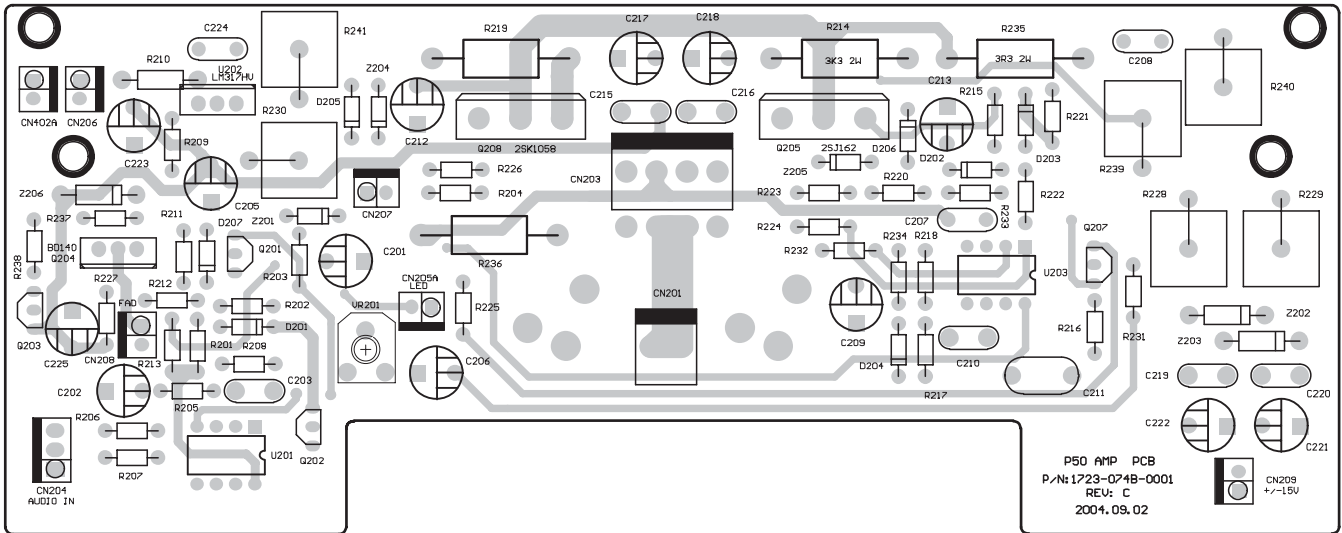
Fender PASSPORT
SMPS Schematic Diagram



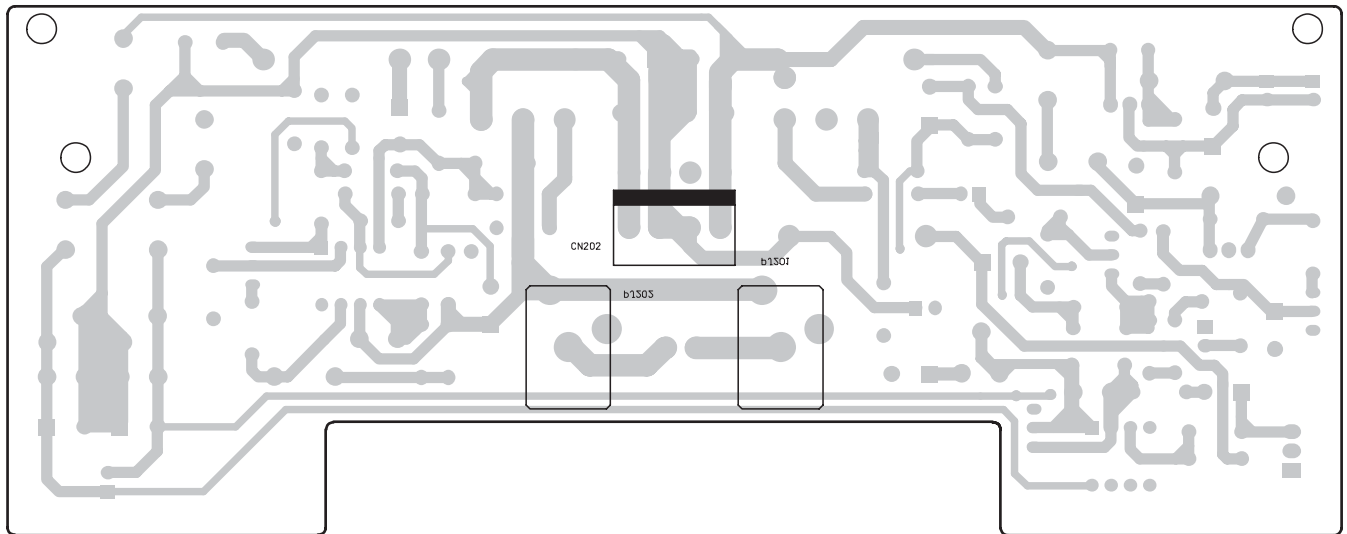
Fender **PASSPORT**
SMPS PCB



PASSPORT
 AMP Schematic Diagram



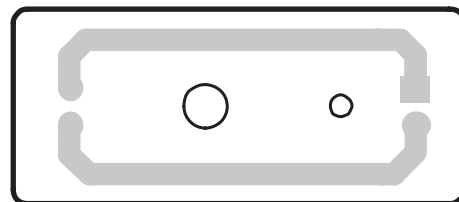
Amplifier PCB Component Side



Amplifier PCB Copper Side

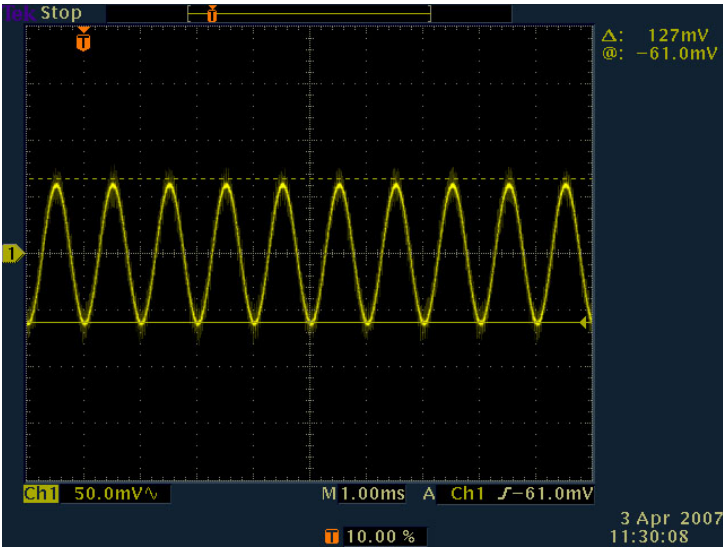



LED PCB Component Side



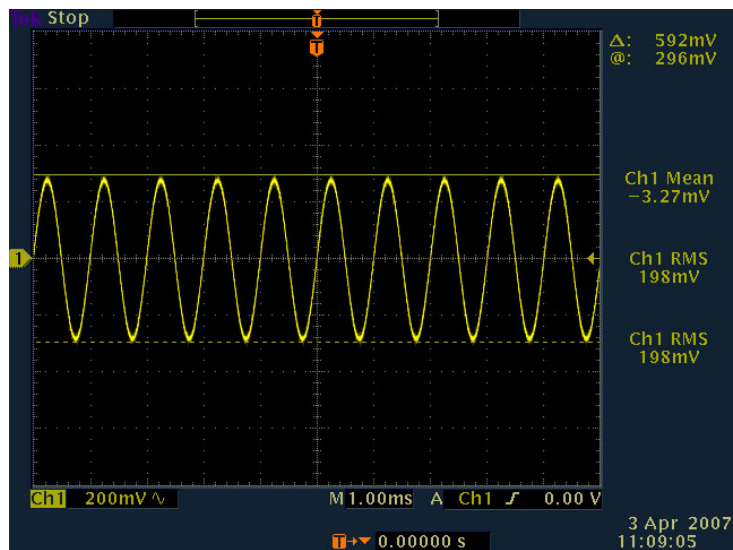
LED PCB Copper Side

Fender **PASSPORT**
Amplifier / LED PCB

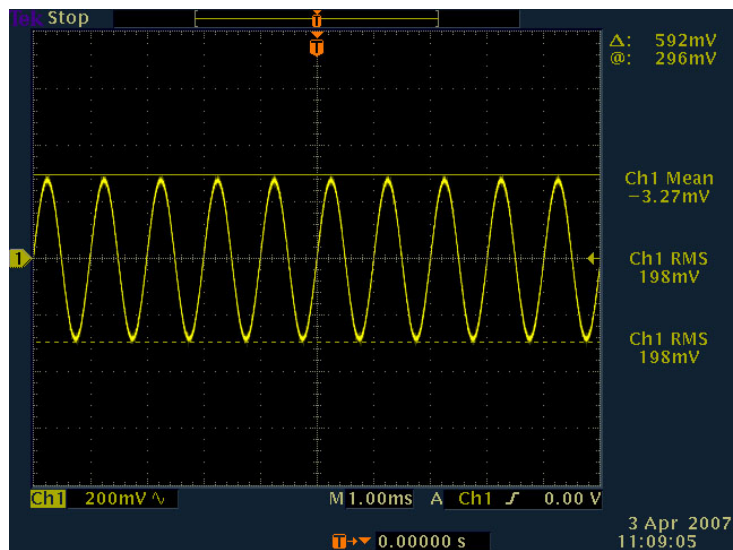
TP1	DC300V
TP2	DC34V
TP3	DC-34V
TP4	
TP5	DC-15V
TP6	DC15V
TP7	DC34V
TP8	DC-34V
TP9	DC8V


PASSPORT
 Test Point Information

TP10

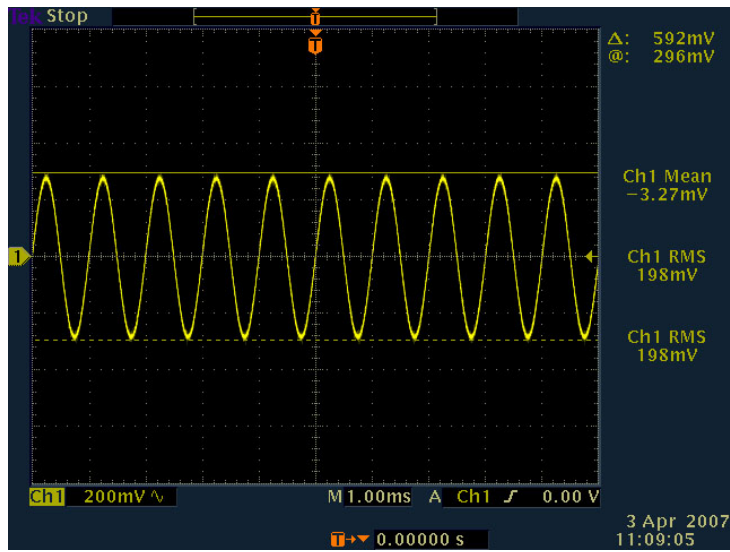


TP11

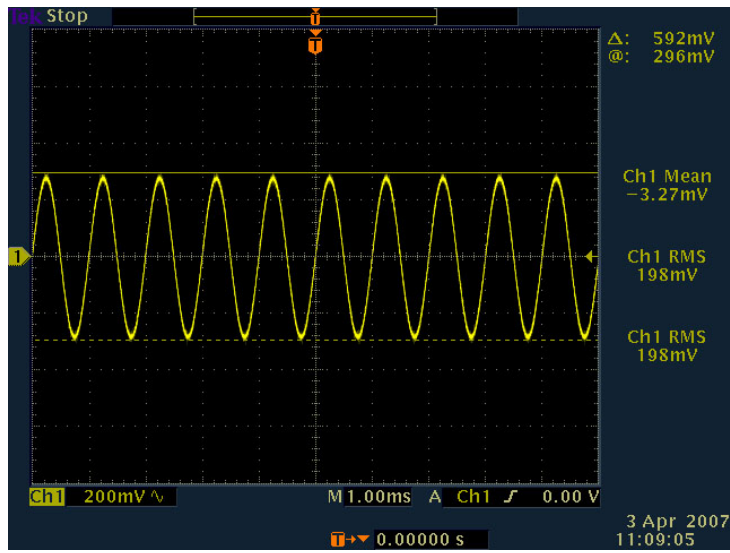


Fender PASSPORT
Test Point Information

TP12

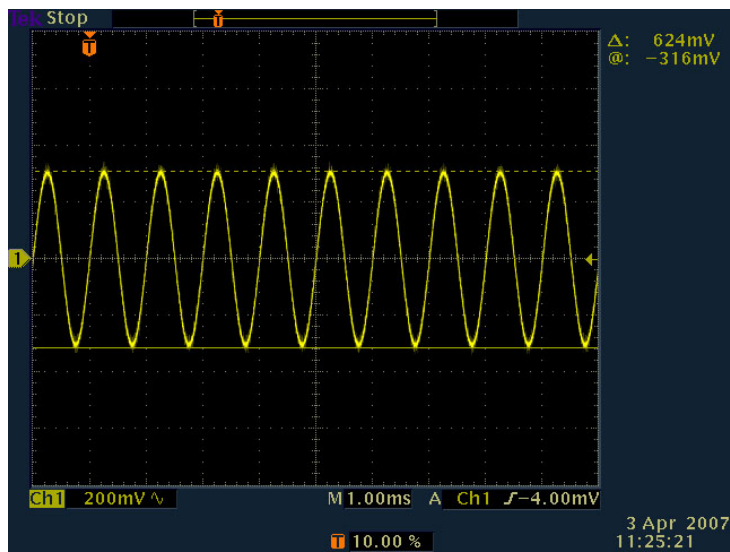


TP13

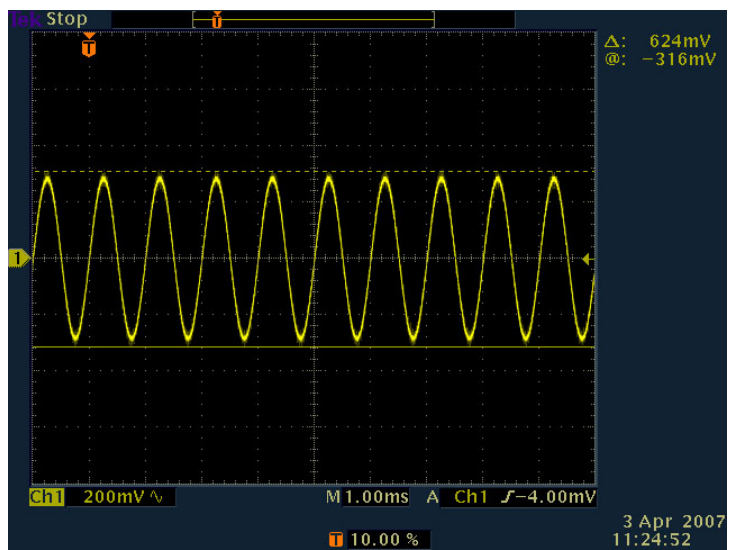


Fender PASSPORT
Test Point Information

TP14

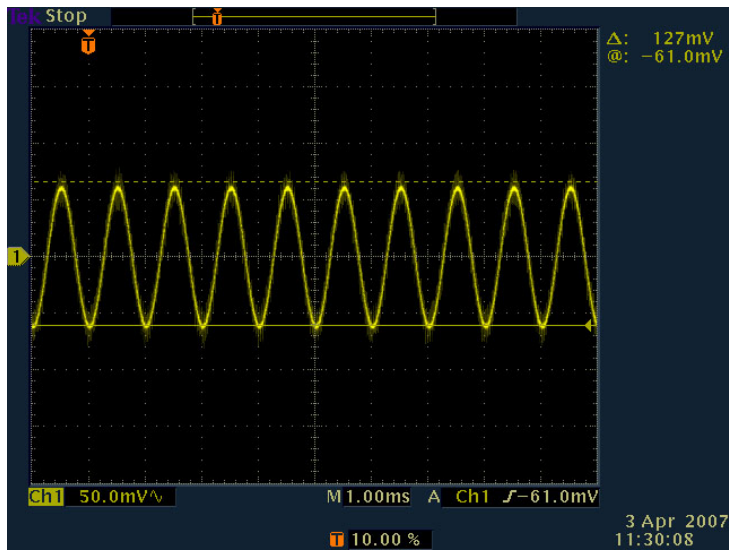


TP15



Fender PASSPORT
Test Point Information

TP16



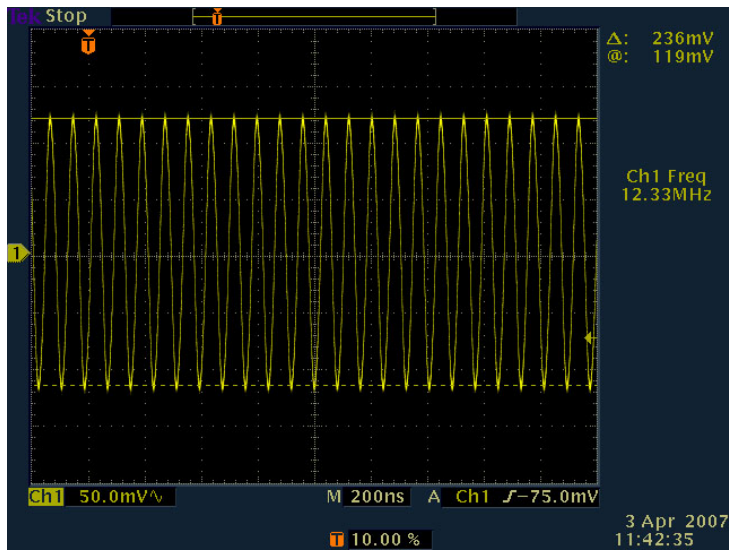
TP17

DC8V

TP18

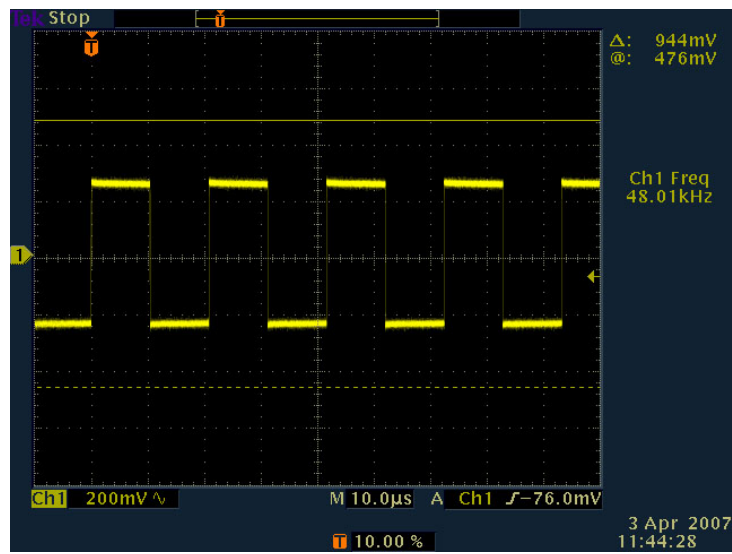
DC5V

TP19



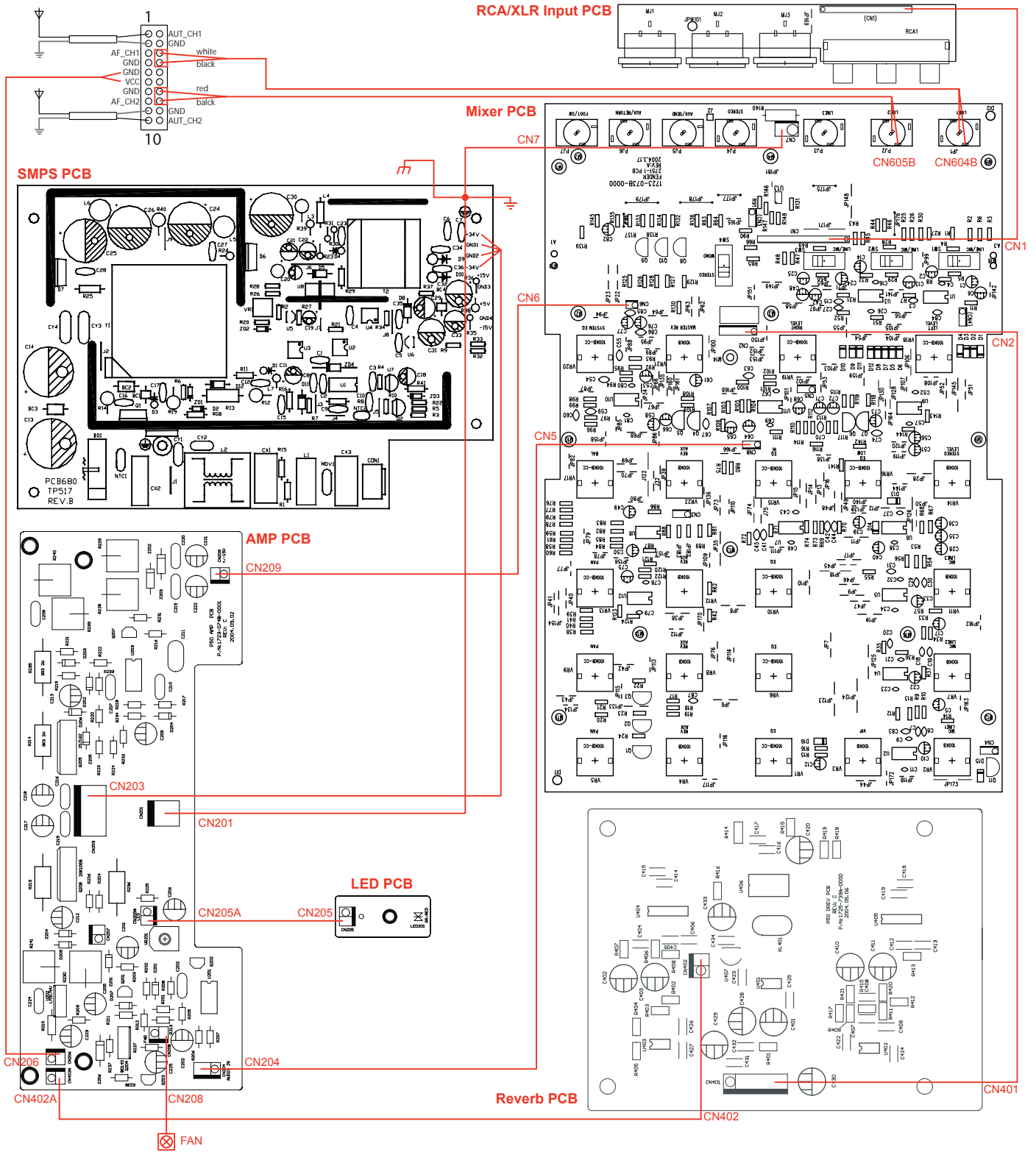
Fender PASSPORT
Test Point Information

TP20



Fender PASSPORT
Test Point Information

P-80 Wiring Diagram



Fender **PASSPORT**
Wiring Diagram

P-80 Wiring Diagram

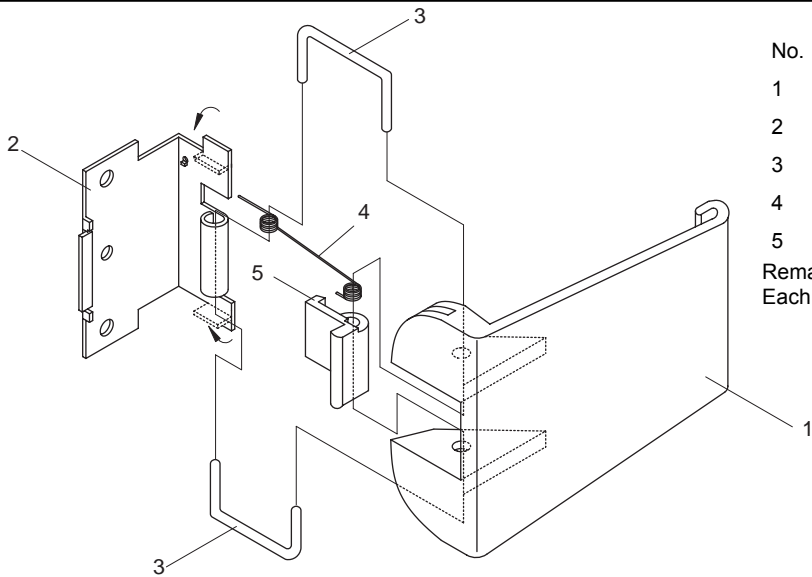
The following shows the legend of the mating connections

PCB-P8011+MIXE			PCB-P8011+RCA		
CN1	1	GND	CN1	1	GND
	2	MIC1+		2	MIC1+
	3	MIC1-		3	MIC1-
	4	MIC2+		4	MIC2+
	5	MIC2-		5	MIC2-
	6	OPEN		6	OPEN
	7	OPEN		7	OPEN
	8	OPEN		8	OPEN
	9	OPEN		9	OPEN
	10	RCA IN2		10	RCA IN2
	11	STEREO R		11	STEREO R
	12	STEREO L		12	STEREO L
	13	TAPE OUT R		13	TAPE OUT R
	14	TAPE OUT L		14	TAPE OUT L
	15	GND		15	GND
PCB-P8011+MIXE			PCB-P8011+DREV		
CN2	1	-15V	CN401	1	-15V
	2	AGND		2	AGND
	3	+15V		3	+15V
	4	AUDIO IN		4	AUDIO IN
	5	AGND		5	AGND
	6	AUDIO OUT		6	AUDIO OUT
PCB-P8011+MIXE			PCB-P8011+PWRM		
CN5	1	AUDIO OUT	CN204	1	AUDIO IN
	2	GND		2	GND
	3	OPEN		3	OPEN
PCB-P8011+MIXE			PCB-P8011+PWRM		
CN6	2	-15V	CN209	2	-15V
	1	+15V		1	+15V
PCB-P8011+MIXE			PCB-P8011+SMPS		
CN7	1	GND		1	GND
	2	GND		2	GND
PCB-P8011+MIXE			WIRELESS PCB		
CN604B	1	AF_CH1		3	AF_CH1
	2	GND		4	GND
PCB-P8011+MIXE			WIRELESS PCB		
CN605B	1	AF_CH2		8	AF_CH2
	2	GND		7	GND
PCB-P8011+PWAM			PCB-P8011+LED		
CN205A	2	GND	CN205	2	GND
	1	+15V		1	+15V
PCB-P8011+PWAM			WIRELESS PCB		
CN406	2	+8V		6	+8V
	1	GND		5	GND
PCB-P8011+PWRM			PCB-P8011+SMPS		
CN201	1	GND		1	GND
	2	GND		2	GND
PCB-P8011+PWRM			PCB-P8011+SMPS		
CN203	1	+34V	CN203	1	+34V
	2	GND		2	GND
	3	GND		3	GND
	4	-34V		4	-34V
PCB-P8011+DREV			PCB-P8011+PWAM		
CN402	2	+8V	CN402A	2	+8V
	1	GND		1	GND



PASSPORT

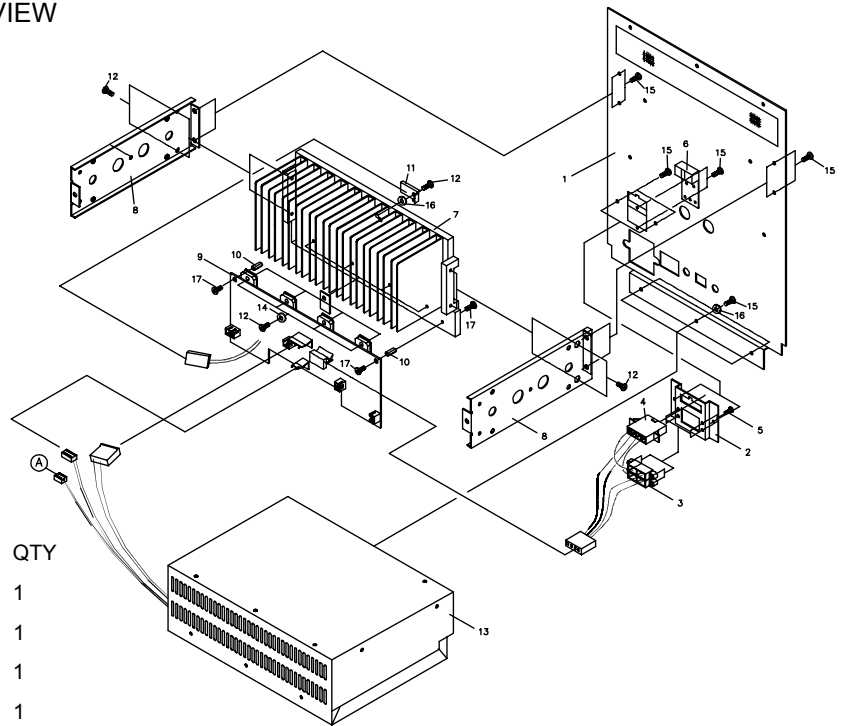
Wiring Diagram



LATCH ASSEMBLY EXPLODED VIEW


No.	DESCRIPTION	PART NUMBER	QTY
1	LATCH ARM	4153-2730+0	1
2	LATCH BRACKET	4133-9540+0	1
3	LATCH "C" PINS	4133-9430+0	2
4	LATCH SPRING	4133-9550+0	1
5	LATCH SAFETY CATCH	4153-2740+1	1

Remark:
Each unit contains 4 latch assemblies.

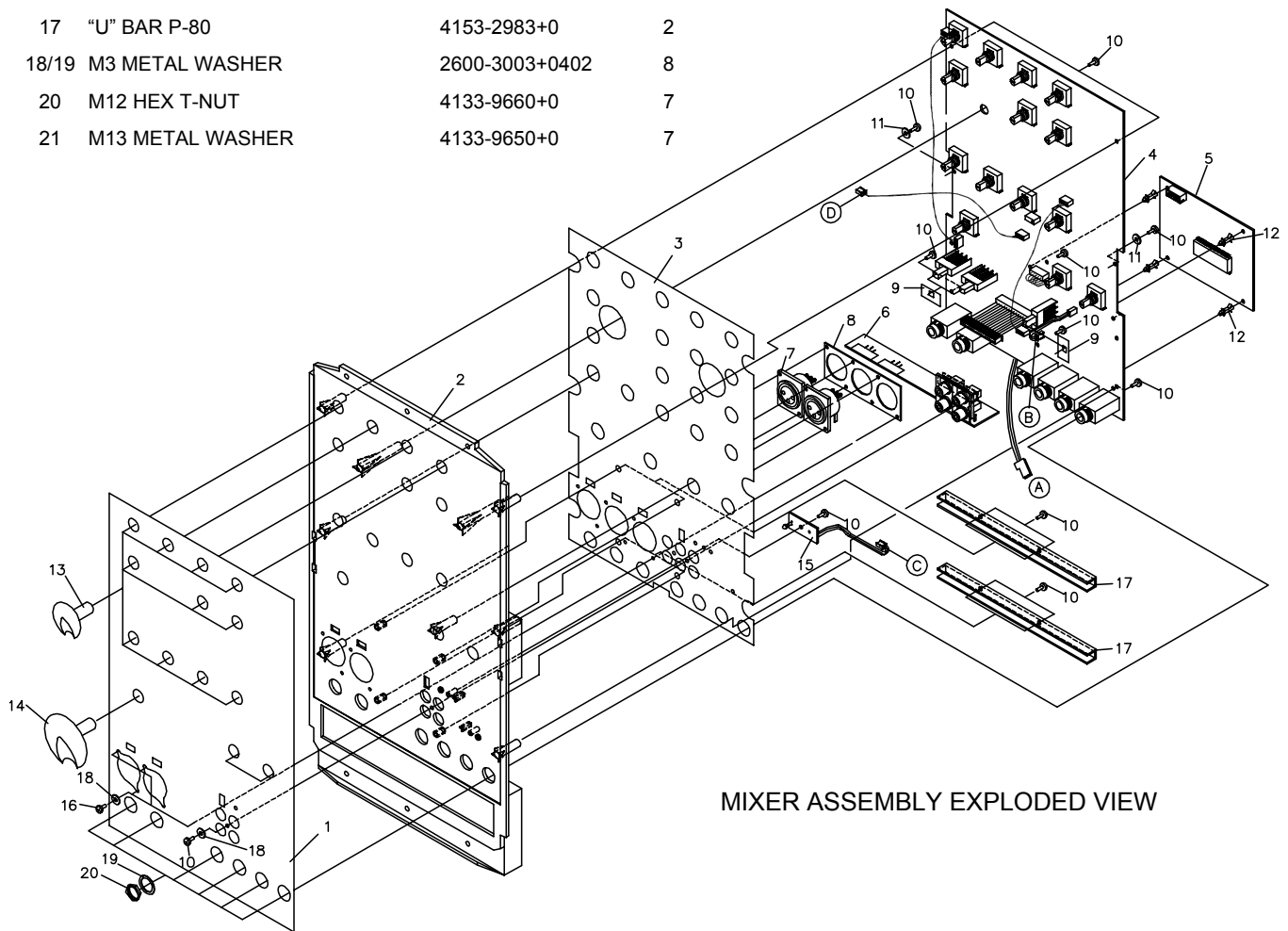


POWER MODULE ASSEMBLY EXPLODED VIEW

No.	DESCRIPTION	PART NUMBER	QTY
1	REAR PANEL P-80	4133-946D+0	1
2	AUX POWER CON BRACKET	4133-9510+0	1
3	GM FUSE HOLDER HOUSING	4153-1160+0	1
4	AUX POWER CONNECTOR	7010-0140+0	1
5	2.6x6 MM SCREW TF	2934-2606+3000	2
6	FUSE COVER P-80	4135-5511+0	1
7	POWER AMP HEAT SINK	5400-1881+1	1
8	MOUNTING BRACKET	4133-9490+0	2
9	POWER AMP PCB ASSEMBLY PCB-P8011+PWRM 1 P-80		1
10	BRASS TUBE STANDOFF	4133-9580+0	2
11	THERMAL MOUNTING BRACKET	4133-9090+0	1
12	3x12MM SCREW PHPS	2944-3008+3000	9
13	SMPSU MODULE P-80		1
14	M3 METAL WASHER	2600-3005+0803	4
15	3x6MM SCREW PHPS	2944-3006+3000	11
16	M3 METAL SPRING WASHER	2607-3009+0553	12
17	3x8MM SCREW PHPS	2954-3008+3000	4

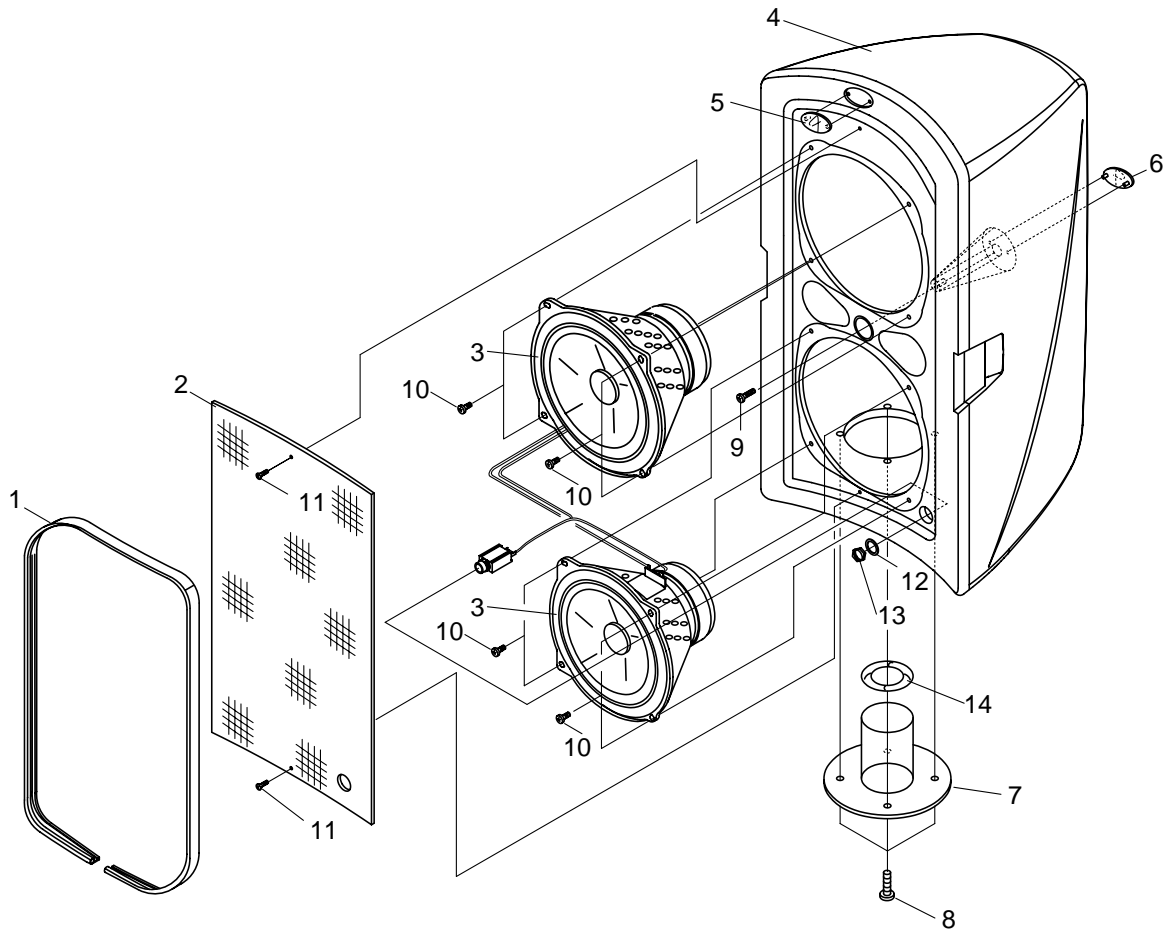

PASSPORT
 Latch Exploded View

No.	DESCRIPTION	PART NUMBER	QTY
1	FRONT PANEL OVERLAY P-80	4155-0141+0	1
2	FRONT PANEL P-80	1466-7601+0	1
3	SHIELD PLATE	4133-9550+0	1
4	MIXER PCB ASSEMBLY P-80	PCB-P8011+MIXER	1
5	REVERB PCB ASSEMBLY P-80	PCB-p8011+DREV	1
6	RCA/XLR PCB ASSEMBLY	1723-080A+0000	1
7	XLR MIC JACK (RCA/XLR ASSY)	2113-1223+0	2
8	MIC JACK BRACKET (RCA/XLR)	4133-9570+0	1
9	SWITCH COVER	3100-4531+0	3
10	3X8MM SCREW TF	2954-3008+3000	14
11	M3 FIBER WASHER	2601-3008+0801	2
12	PCB STANDOFF	4153-1220+0	4
13	MIXER CONTROL KNOB	4153-2830+1	13
14	MASTER CONTROL KNOB	4153-2820+1	1
15	LED PCB ASSEMBLY	PCB-P150D11+LED	1
16	3X8MM SCREW PHPS	2944-3008+3000	6
17	"U" BAR P-80	4153-2983+0	2
18/19	M3 METAL WASHER	2600-3003+0402	8
20	M12 HEX T-NUT	4133-9660+0	7
21	M13 METAL WASHER	4133-9650+0	7



MIXER ASSEMBLY EXPLODED VIEW

Fender **PASSPORT**
Mixer Exploded View

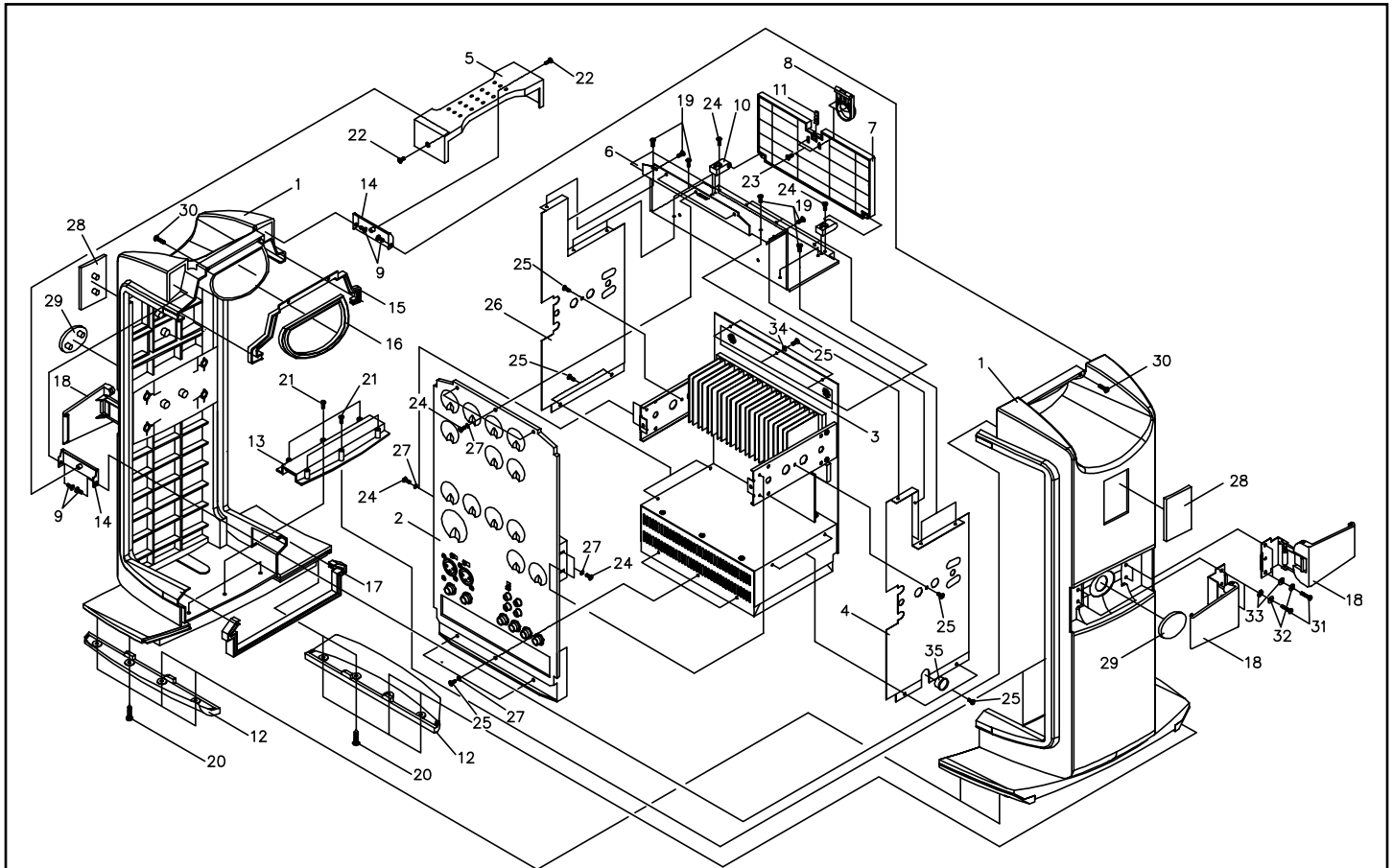


SPEAKER ASSEMBLY EXPLODED VIEW

No.	DESCRIPTION	PART NUMBER	QTY
1	BAFFLE GASKET	4153-2880+0	1
2	SPEAKER GRILLE	4133-9440+0	1
3	6.5" SPEAKER DRIVE UNIT	1525-1150+0	2
4	SPEAKER BOX	4153-3022+1	1
5	RED SPRUE CAP	4153-2902+0	1
6	NATURAL SPRUE CAP	4153-2810+0	1
7	SPEAKER STAND PLUG	1463-9100+1	1
8	6X25MM SCREW TF	2904-6025+3000	4
9	4x14mm SCREW PHPS	2954-4014+3000	1
10	4x10mm SCREW TF	2954-4010+3000	8
11	3X10MM SCREW FLAT HEAD	2951-3010+3000	2
12	M12 WASHER	4133-2810+0	1
13	12MM HEX NUT	4133-2820+0	1
14	SPEAKER STAND "O" RING	4152-2091+0	1


EACH UNIT CONTAINS TWO SPEAKER ASSEMBLIES.

Fender **PASSPORT**
Speaker Exploded View

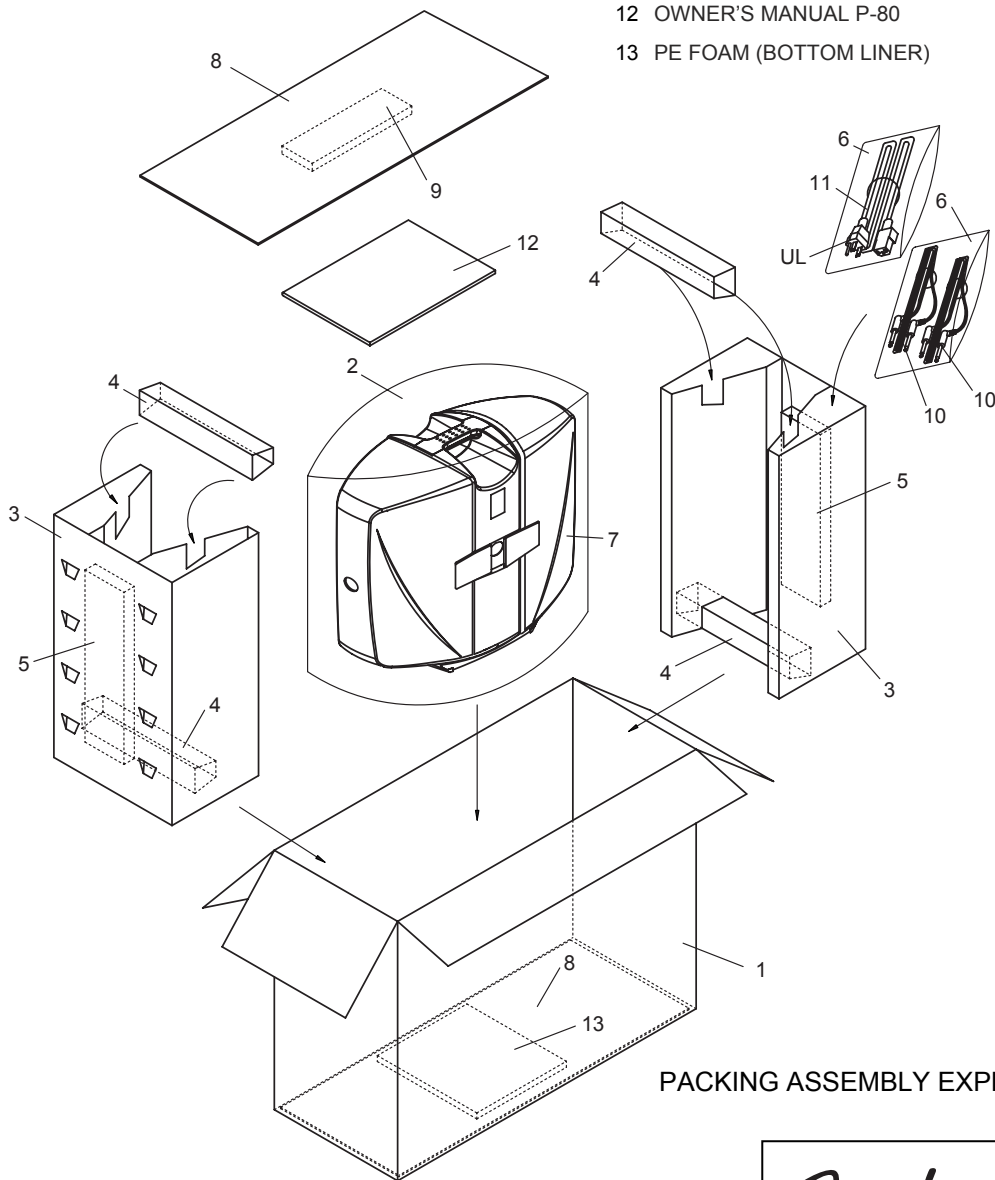


TOWER HOUSING ASSEMBLY EXPLODED VIEW

No.	DESCRIPTION	PART NUMBER	QTY	No.	DESCRIPTION	PART NUMBER	QTY
1	TOWER SIDE CABINET	4153-2703+0	2	19	M2.6x8 MM SCREW PHPS	2944-2608+0000	8
2	MIXER MODULE ASSEMBLY P-80		1	20	4X10 MM SCREW TF	2954-4010+3000	8
3	POWER MODULE ASSEMBLY P-80		1	21	4X14 MM SCREW TF	2954-4014+3000	6
4	SIDE PLATE(B)	4133-9480+1	1	22	3X6 MM FLAT HEAD SCREW	2901-3005+3000	2
5	HANDLE COVER	4153-2694+0	1	23	2.6X6 MM SCREW TF	2934-2606+3000	2
6	PARTITION	413-9450+3	1	24	3X8 MM SCREW PHPS	2944-3008+3000	9
7	COMPARTMENT DOOR	4153-2750-1	1	25	3X6 MM SCREW PHPS	2944-3006+3000	12
8	DOOR LATCH	4153-2760+0	1	26	SIDE PLATE (A)	4133-9470+1	1
9	3X8MM TF SCREW	2954-3008+3000	4	27	M3 METAL FLAT WASHER	2600-3005+0803	10
10	DOOR HINGE	4153-2780+0	2	28	LOGO NAME PLATE	4153-2842+0	2
11	COMPRESSION SPRING	4133-9560+0	1	29	SPRUE CAP (GRAY)	4153-2810+0	2
12	FOOT STAND	4153-2714+0	2	30	4x16 MM SCREW TF	2910-4016+3000	2
13	SUPPORT RIB	4153-2724+0	1	31	4X16 MM SCREW PHPS	2940-4016+3000	8
14	HANDLE BRACKET	4133-9520+1	2	32	M4 METAL SPRING WASHER	2607-4008+0653	8
15	TOP GASKET	4153-2860+1	1	33	M4 METAL WASHER	2600-4008+1003	8
16	HANDLE GASKET	4153-2850+1	1	34	M3 METAL SPRING WASHER	2607-3009+0553	3
17	BOTTOM GASKET	4153-2870+1	1	35	HALO BUSHING 0813C	2113+9535+0	1
18	SPEAKER LATCH ASSEMBLY	SS-P15011+LALK	4				


PASSPORT
 Tower Housing Exploded View

No.	DESCRIPTION	PART NUMBER	QTY
1	GIFT BOX P-80	1434-2103+0-3	1
2	MAIN UNIT POLY BAG	1497-2542+0	1
3	PADDED SIDE CARTON LINER	1434-2300+2-2	2
4	INNER SPACER BRACE	1434-4300+0-1	4
5	PE FOAM	1493-0641+0	2
6	WIRES POLY BAG	1497-2092+0	2
7	MAIN UNIT P-80		1
8	PADDED LINER	1434-2200+0-1	2
9	PE FOAM (TOP LINER)	1493-0631+0	1
10	9M SPEAKER CABLE	7010-0000+0	2
11	MAINS POWER CABLE REGIONAL	7011-6210+0	1
12	OWNER'S MANUAL P-80	4301-7169+1	1
13	PE FOAM (BOTTOM LINER)	1493-0651+0	1



PACKING ASSEMBLY EXPLODED VIEW

Fender **PASSPORT**
Packing Exploded View