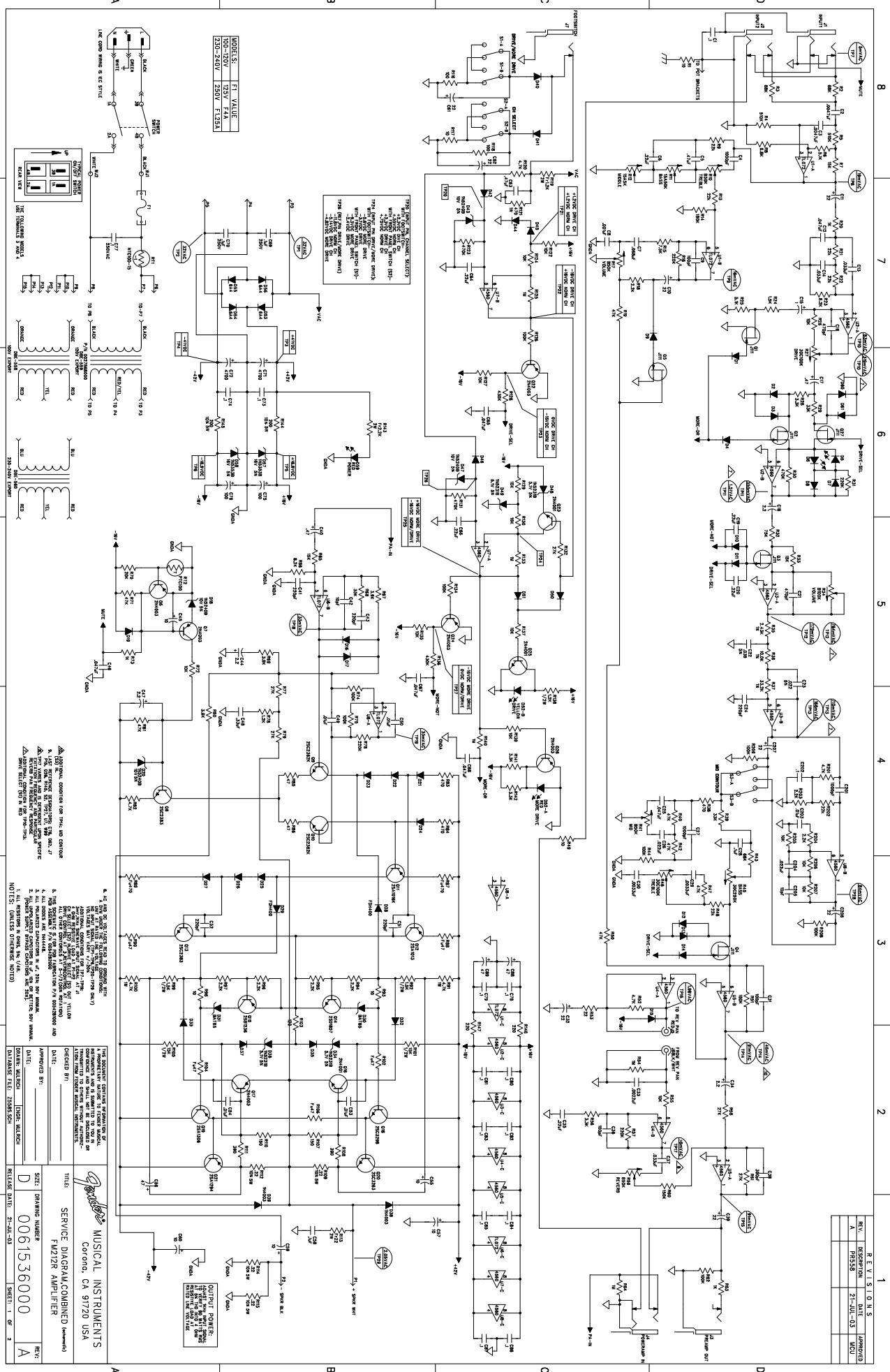
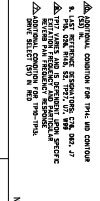
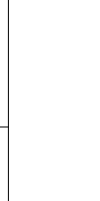
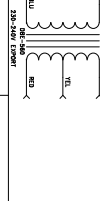
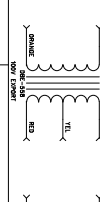
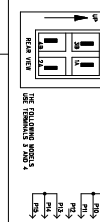


REV.	DESCRIPTION	DATE	APPROVED
1	FR5258	21-JUL-03	WCO



NOTES: FT VALUE

100-250V	750V	7.41
250-250V	250V	7.123A3



4. USE THE DC VOLTS READ IN COLUMN "DC VOLTS" TO DETERMINE THE RESISTOR VALUE TO BE USED IN THE TONE STACK. (SEE NOTE 1)

5. THE RESISTOR VALUE TO BE USED IN THE TONE STACK IS THE VALUE OF THE RESISTOR IN THE COLUMN "RESISTOR VALUE" WHICH IS CLOSEST TO THE DC VOLTS READ IN COLUMN "DC VOLTS".

6. THE RESISTOR VALUE TO BE USED IN THE TONE STACK IS THE VALUE OF THE RESISTOR IN THE COLUMN "RESISTOR VALUE" WHICH IS CLOSEST TO THE DC VOLTS READ IN COLUMN "DC VOLTS".

7. THE RESISTOR VALUE TO BE USED IN THE TONE STACK IS THE VALUE OF THE RESISTOR IN THE COLUMN "RESISTOR VALUE" WHICH IS CLOSEST TO THE DC VOLTS READ IN COLUMN "DC VOLTS".

8. THE RESISTOR VALUE TO BE USED IN THE TONE STACK IS THE VALUE OF THE RESISTOR IN THE COLUMN "RESISTOR VALUE" WHICH IS CLOSEST TO THE DC VOLTS READ IN COLUMN "DC VOLTS".

9. THE RESISTOR VALUE TO BE USED IN THE TONE STACK IS THE VALUE OF THE RESISTOR IN THE COLUMN "RESISTOR VALUE" WHICH IS CLOSEST TO THE DC VOLTS READ IN COLUMN "DC VOLTS".

10. THE RESISTOR VALUE TO BE USED IN THE TONE STACK IS THE VALUE OF THE RESISTOR IN THE COLUMN "RESISTOR VALUE" WHICH IS CLOSEST TO THE DC VOLTS READ IN COLUMN "DC VOLTS".

NOTES: (UNLESS OTHERWISE NOTED)

1. ALL RESISTORS IN OHMS, UNLESS OTHERWISE NOTED.

2. ALL CAPACITORS IN P.F., UNLESS OTHERWISE NOTED.

3. ALL VOLTAGES IN VOLTS, UNLESS OTHERWISE NOTED.

4. ALL DIMENSIONS ARE IN INCHES, UNLESS OTHERWISE NOTED.

5. THE RESISTOR VALUE TO BE USED IN THE TONE STACK IS THE VALUE OF THE RESISTOR IN THE COLUMN "RESISTOR VALUE" WHICH IS CLOSEST TO THE DC VOLTS READ IN COLUMN "DC VOLTS".

6. THE RESISTOR VALUE TO BE USED IN THE TONE STACK IS THE VALUE OF THE RESISTOR IN THE COLUMN "RESISTOR VALUE" WHICH IS CLOSEST TO THE DC VOLTS READ IN COLUMN "DC VOLTS".

7. THE RESISTOR VALUE TO BE USED IN THE TONE STACK IS THE VALUE OF THE RESISTOR IN THE COLUMN "RESISTOR VALUE" WHICH IS CLOSEST TO THE DC VOLTS READ IN COLUMN "DC VOLTS".

8. THE RESISTOR VALUE TO BE USED IN THE TONE STACK IS THE VALUE OF THE RESISTOR IN THE COLUMN "RESISTOR VALUE" WHICH IS CLOSEST TO THE DC VOLTS READ IN COLUMN "DC VOLTS".

9. THE RESISTOR VALUE TO BE USED IN THE TONE STACK IS THE VALUE OF THE RESISTOR IN THE COLUMN "RESISTOR VALUE" WHICH IS CLOSEST TO THE DC VOLTS READ IN COLUMN "DC VOLTS".

10. THE RESISTOR VALUE TO BE USED IN THE TONE STACK IS THE VALUE OF THE RESISTOR IN THE COLUMN "RESISTOR VALUE" WHICH IS CLOSEST TO THE DC VOLTS READ IN COLUMN "DC VOLTS".

**MUSICAL INSTRUMENTS**  
Corona, CA 91720 USA

**FR5258**  
SERVICE DIAGRAM (COMBINED)

DATE: \_\_\_\_\_  
CHECKED BY: \_\_\_\_\_  
APPROVED BY: \_\_\_\_\_

SIZE: DRAWING NUMBER  
**D 0061536000**

RELEASE DATE: 21-JUL-03

SHEET: 1 OF 3