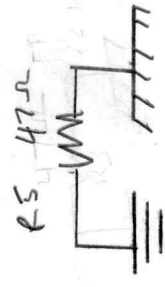


PEAVEY
NEEDED?
NEEDED?



RS 1/2 watt, Flameproof

FI 3 Amp Fuse

F2 250 mA fuse

CRs 2N4007

C1, C2, 70 µf, 350V

L1 "022707" 4H
167-Ω, 50mA

C3, C4, CS 22 µf 450V

R3 1K, 1 watt

R4 4700, 1 watt

Chassis



circuit



TAPS	TUBE	100mA	150mA	200mA
RED	5U4GB	435V	412V	393V
RED	GZ34	459V	441V	425V
RED	5Y3GT	445V	---	---
RED/W	5U4GB	352V	332V	314V
RED/W	GZ34	375V	360V	345V
RED/W	5Y3GT	360V	---	---

710V OR	610V CT	@ 200mA	50V BIAS
RED	RED/WHT	RED/GRN	RED/WHT
RED	GRN	GRN/YEL	GRN
GRN	YEL	YEL	YEL
YEL	---	---	---

100/120/220/240V	50/60 CY
BLK	BLK/WHT
WHT	BRN
GRY	BRN/WHT
ORN	---

MEASURED B+ VOLTAGES WITH 40µF CAPACITOR

CLASSIC TONE
40-18029