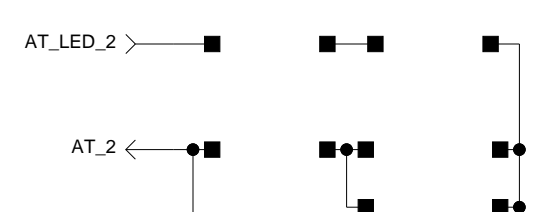


  
 Peavey Electronics Corp.  
 5022 Hartley Peavey Drive  
 Meriden, MS 39305

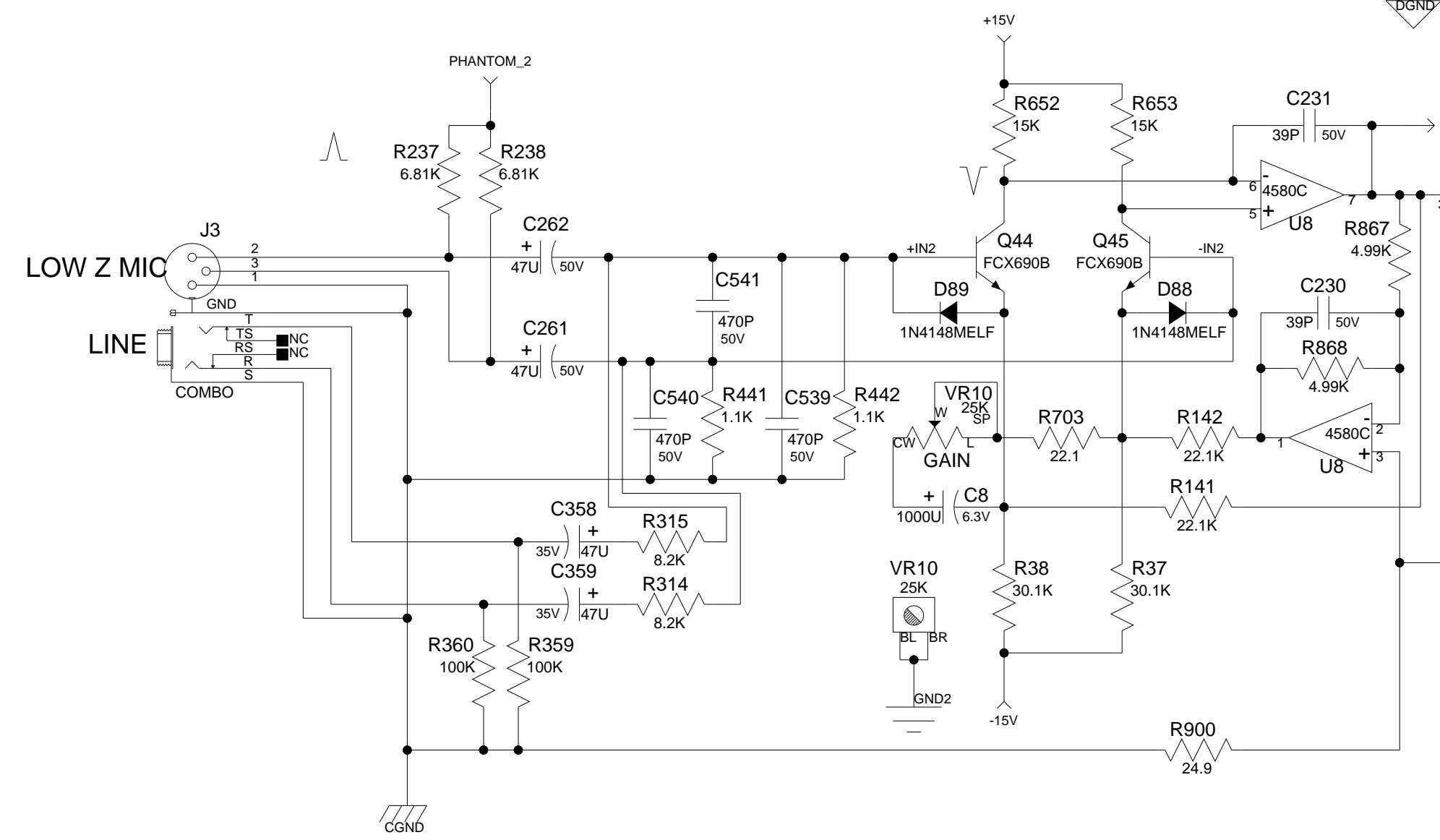
Title: **PV14BT\_CH\_R4**  
 Sheet Title: **CHANNEL 1**  
 Sheet 2 of 7 Date: 3-10-2015\_17-19

CONFIDENTIAL

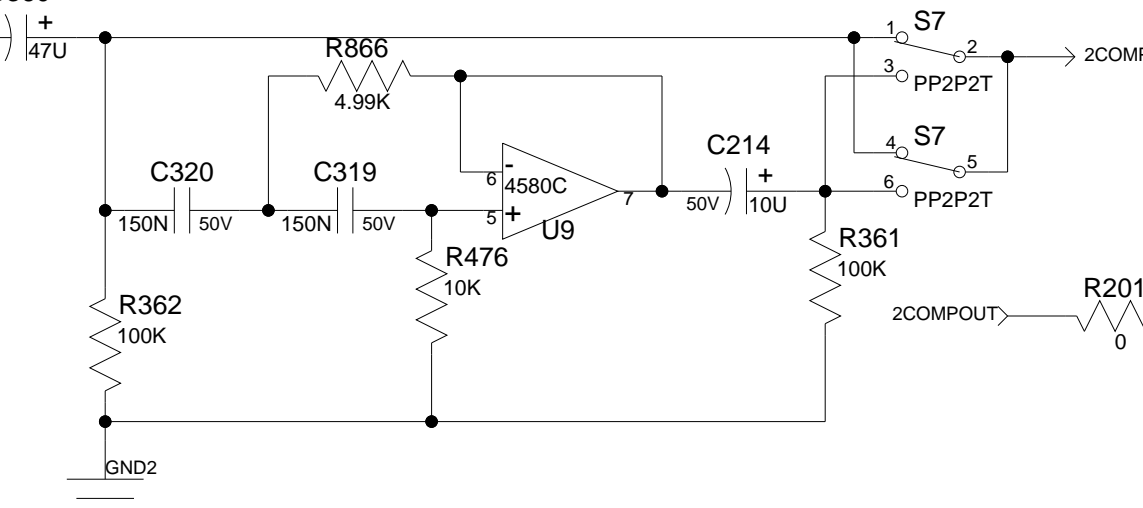
BT: SW, CAP2, R658  
D6, R636, S6, C38 DNP



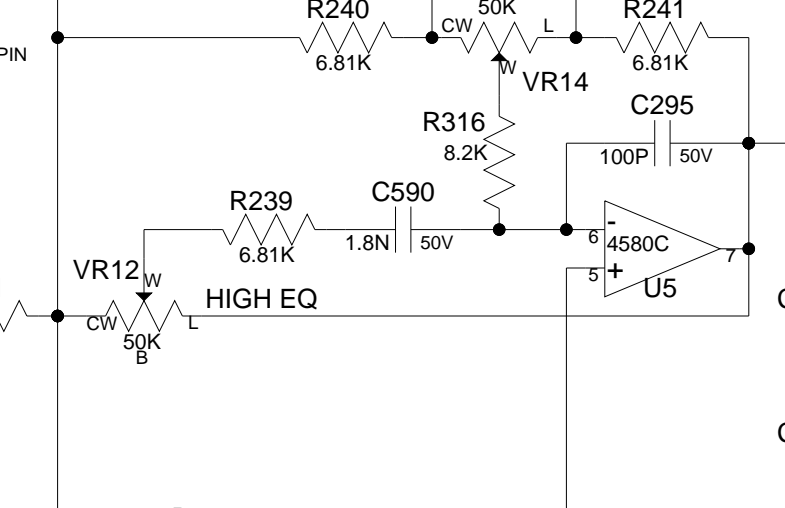
INPUT TWO



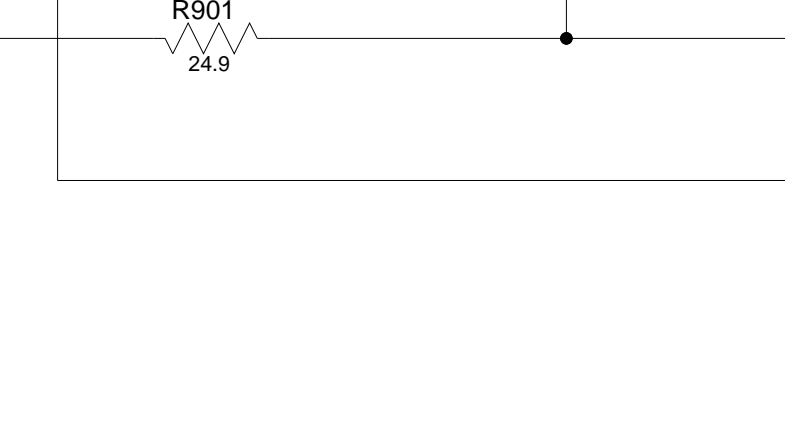
HI PASS



LOW EQ



HIGH EQ

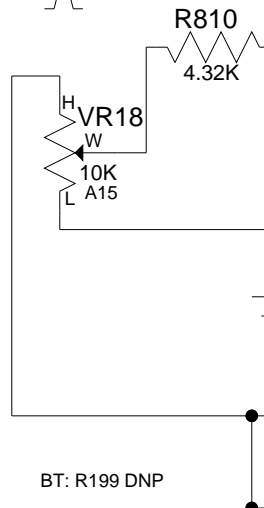


MIDMORPH

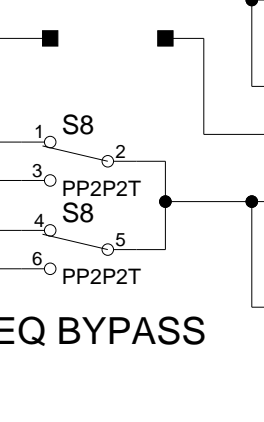


0dB @ 70% travel  
+10dB Max gain

LEVEL



MUTE



PAN



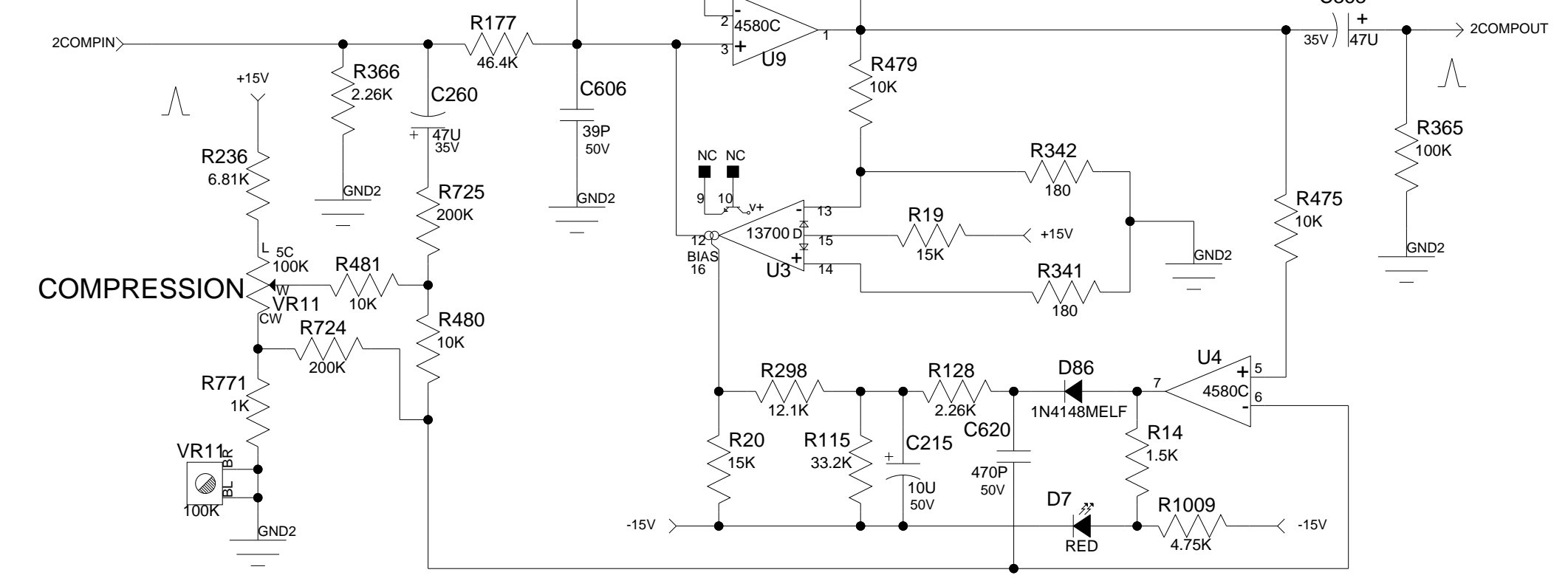
EQ BYPASS



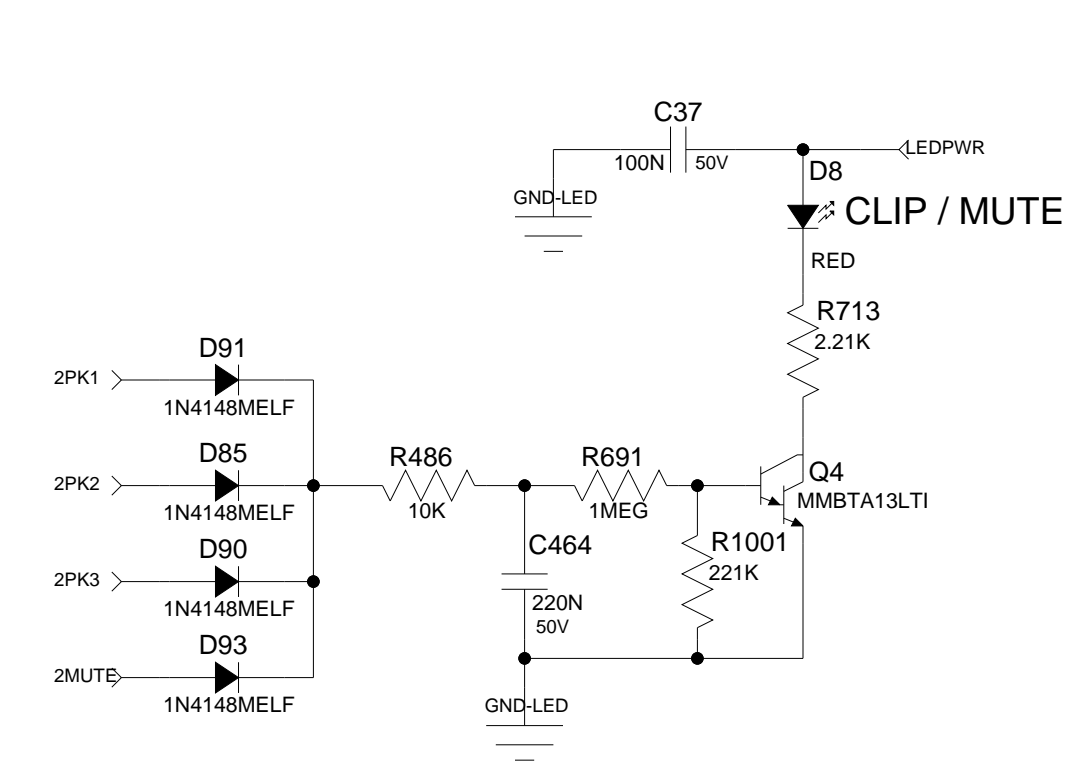
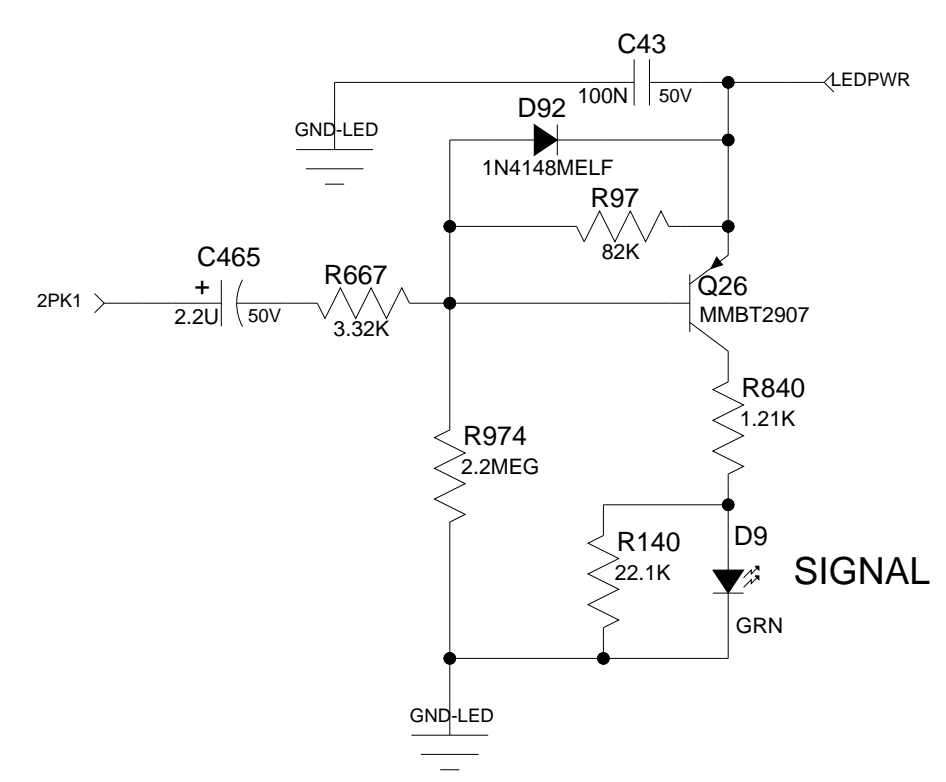
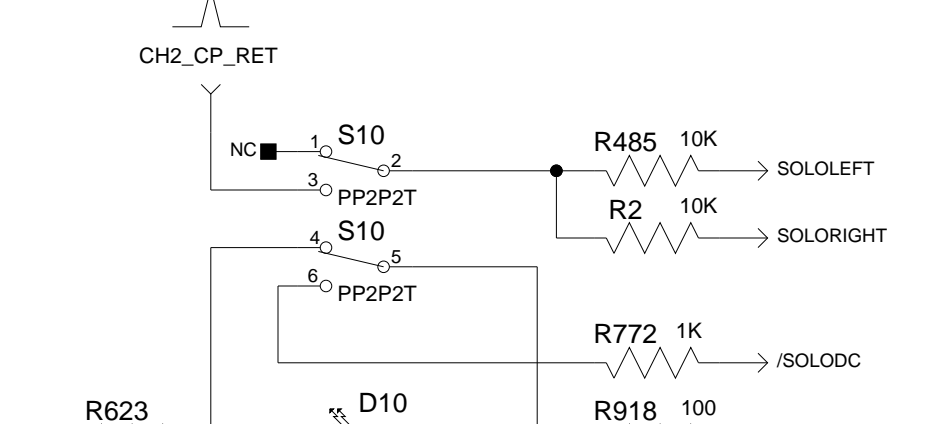
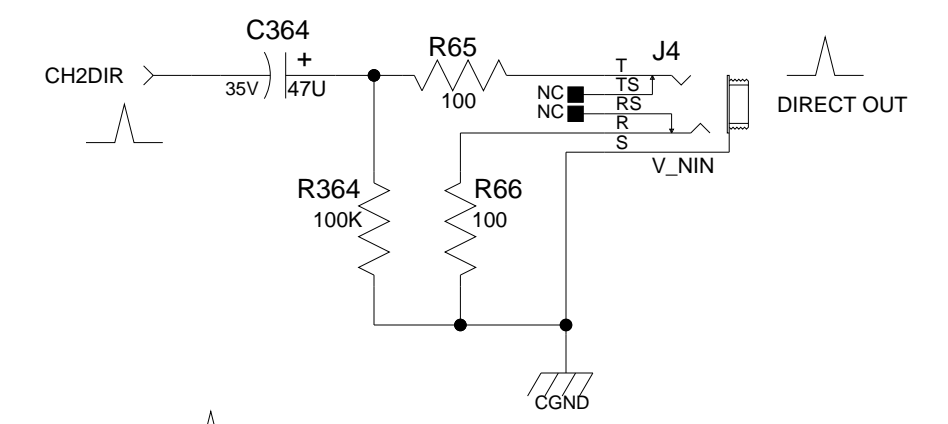
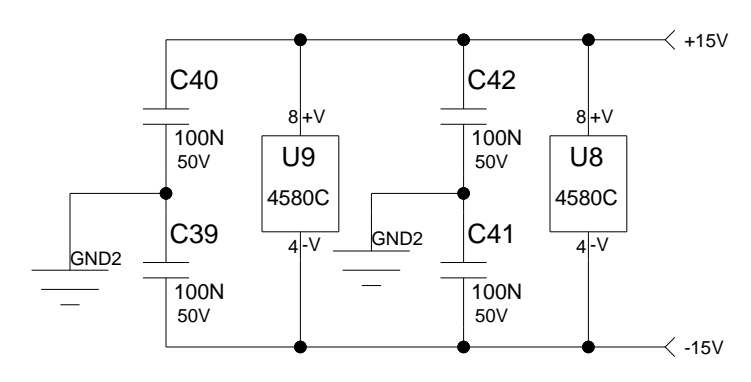
AUX SEND



CHANNEL COMPRESSOR



COMPRESSOR ACTIVITY

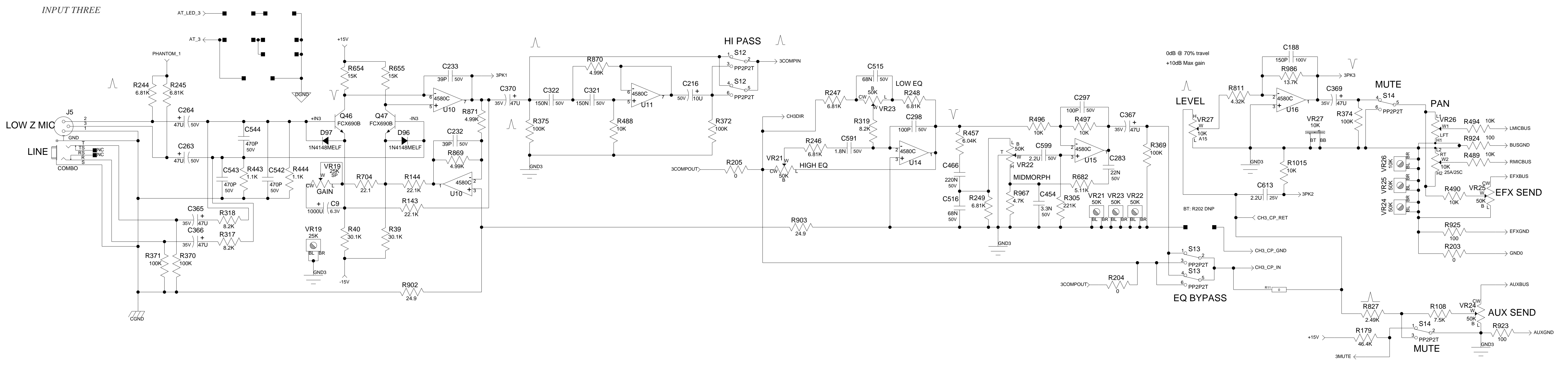


PEAVEY  
Peavey Electronics Corp.  
5022 Hartley Peavey Drive  
Meriden, MS 39305

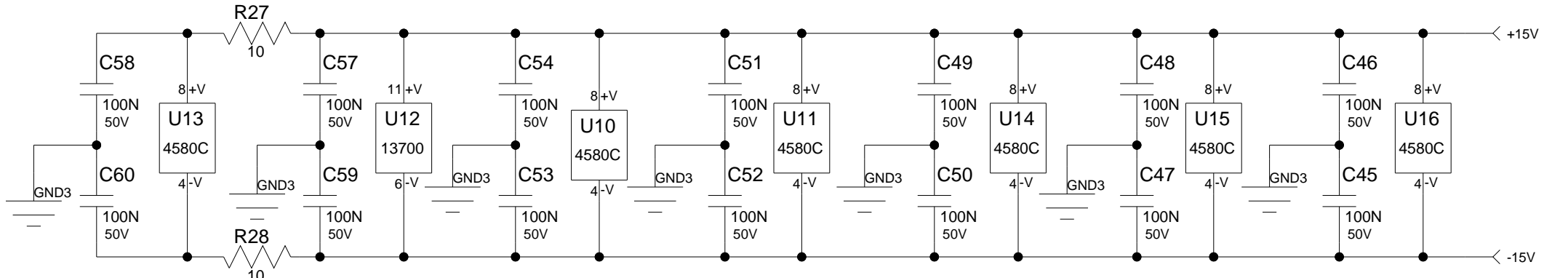
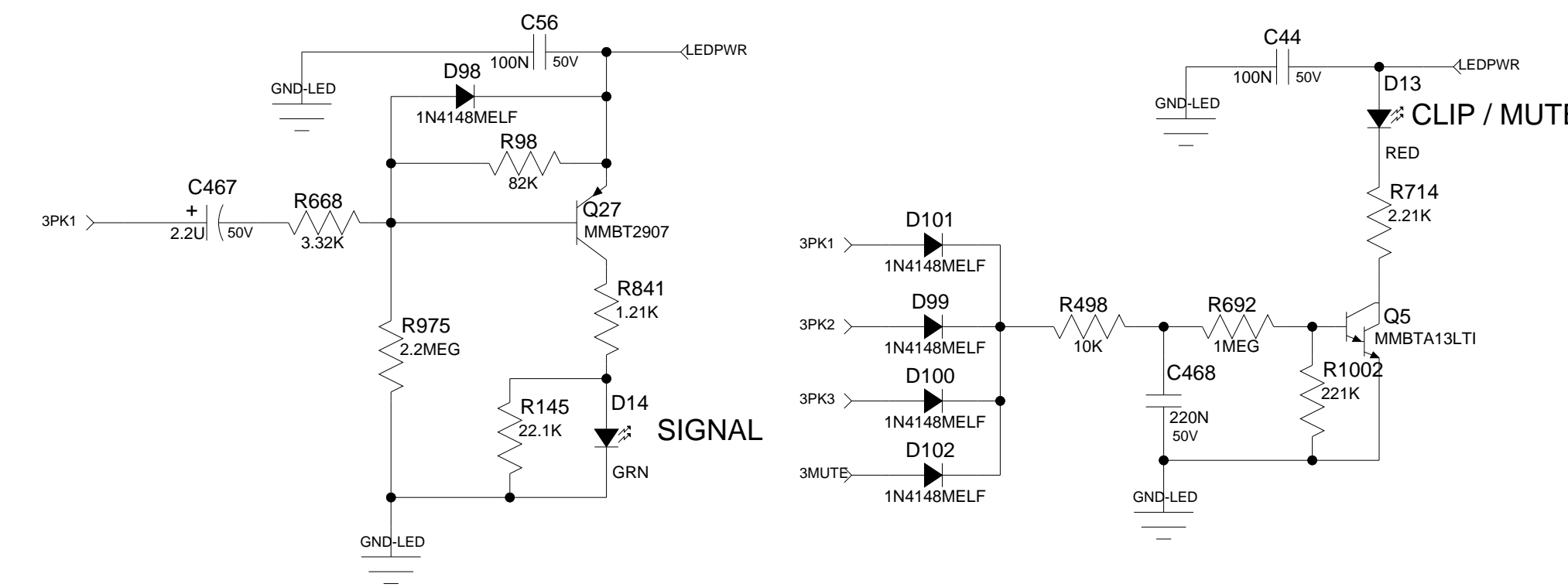
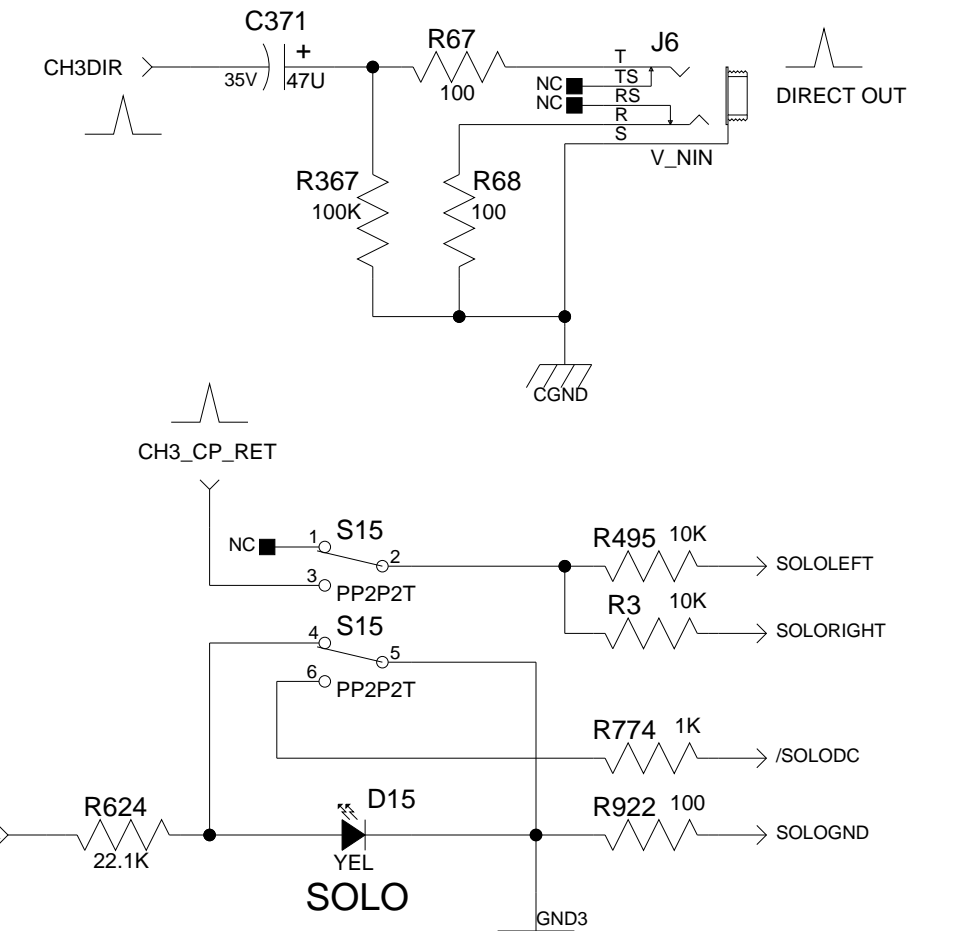
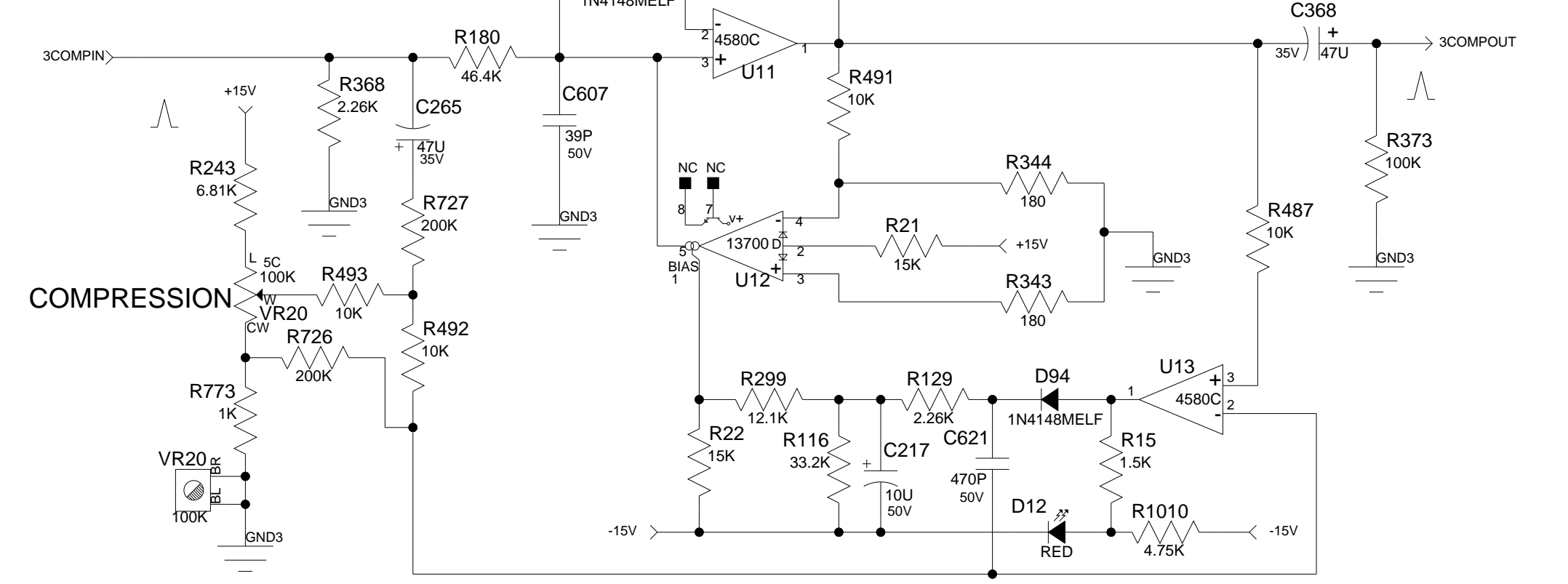
Title: PV14BT\_CH\_R4  
Channel 2  
Sheet 3 of 7 Date: 3-10-2015\_17-19

CONFIDENTIAL

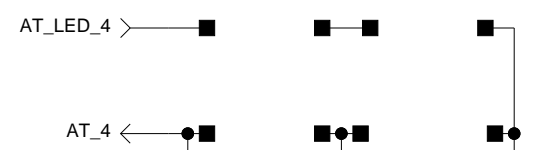
BT: SW, CAP3, RES9  
D11, R637, S11, C55 DNP



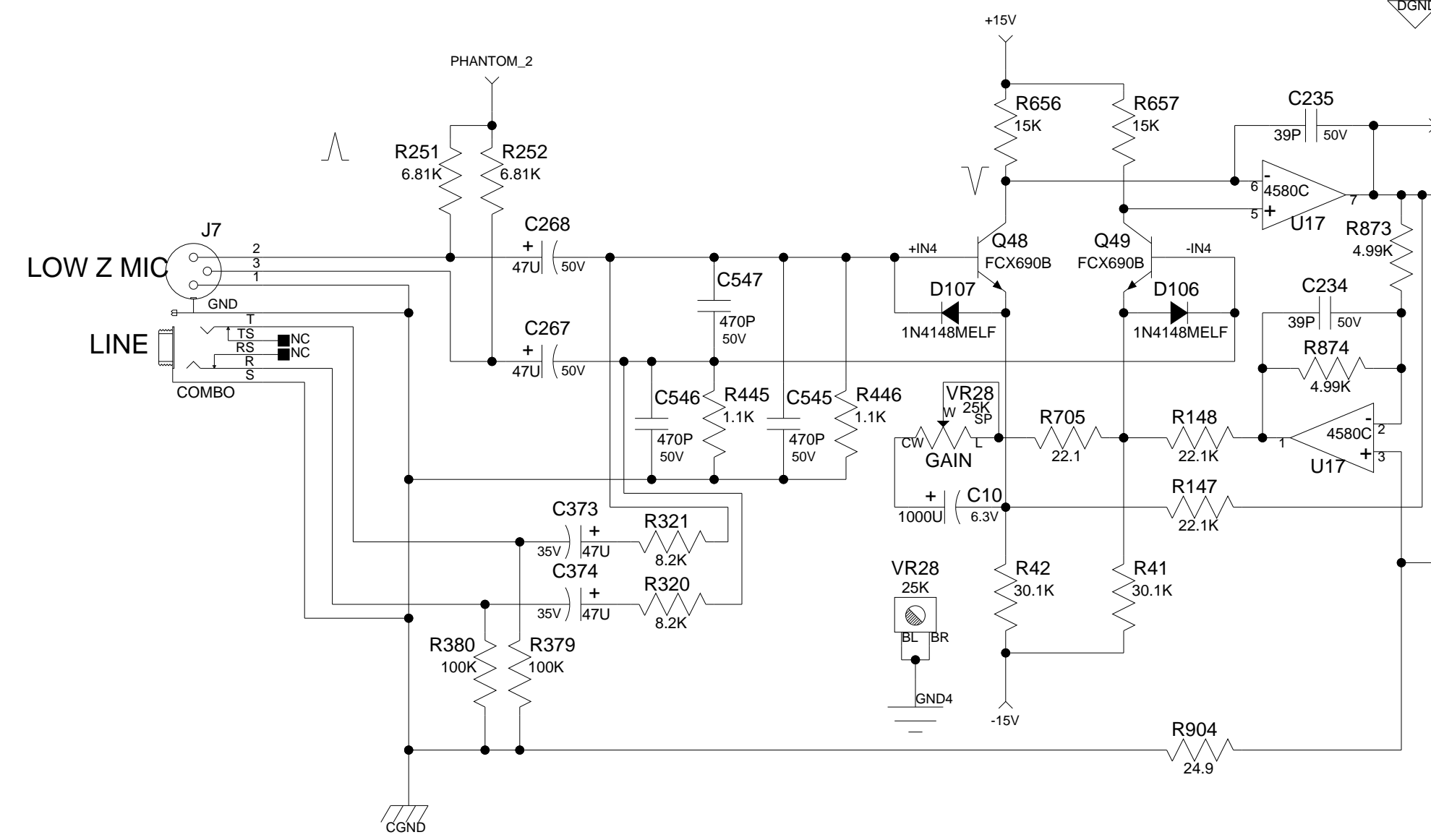
**CHANNEL COMPRESSOR**



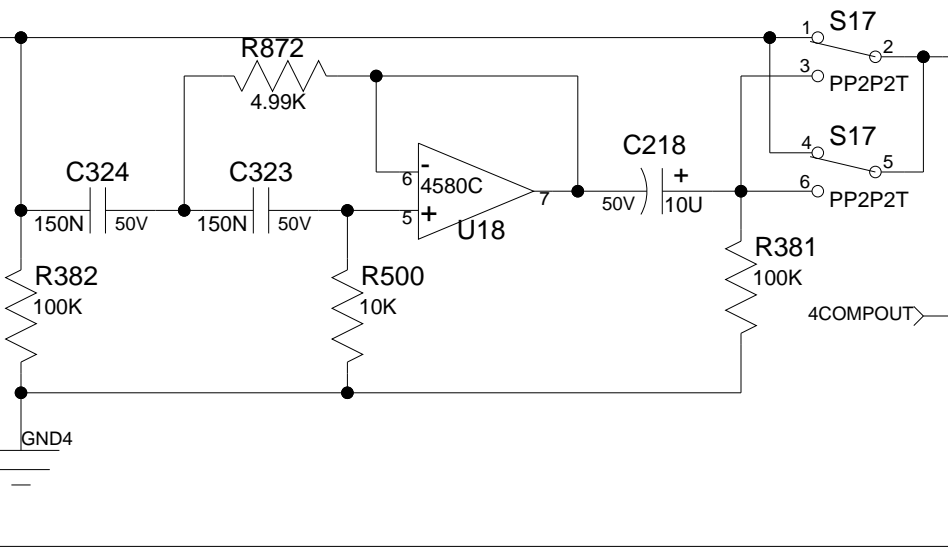
BT: SW, CAPs, R669  
D16, R668, S16, C61 DNP



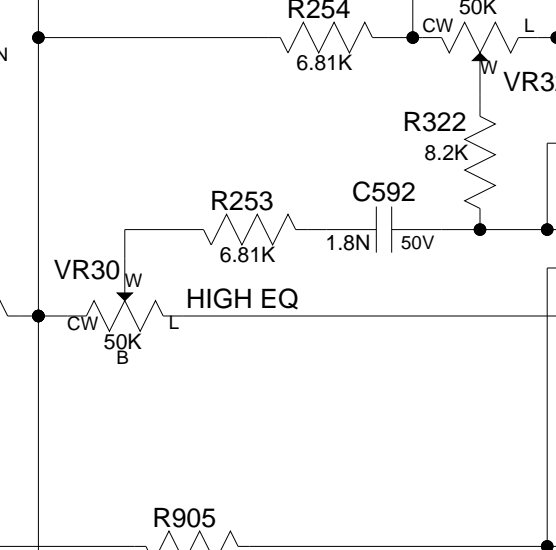
INPUT FOUR



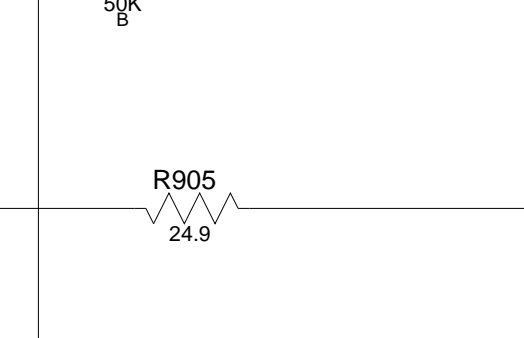
HI PASS



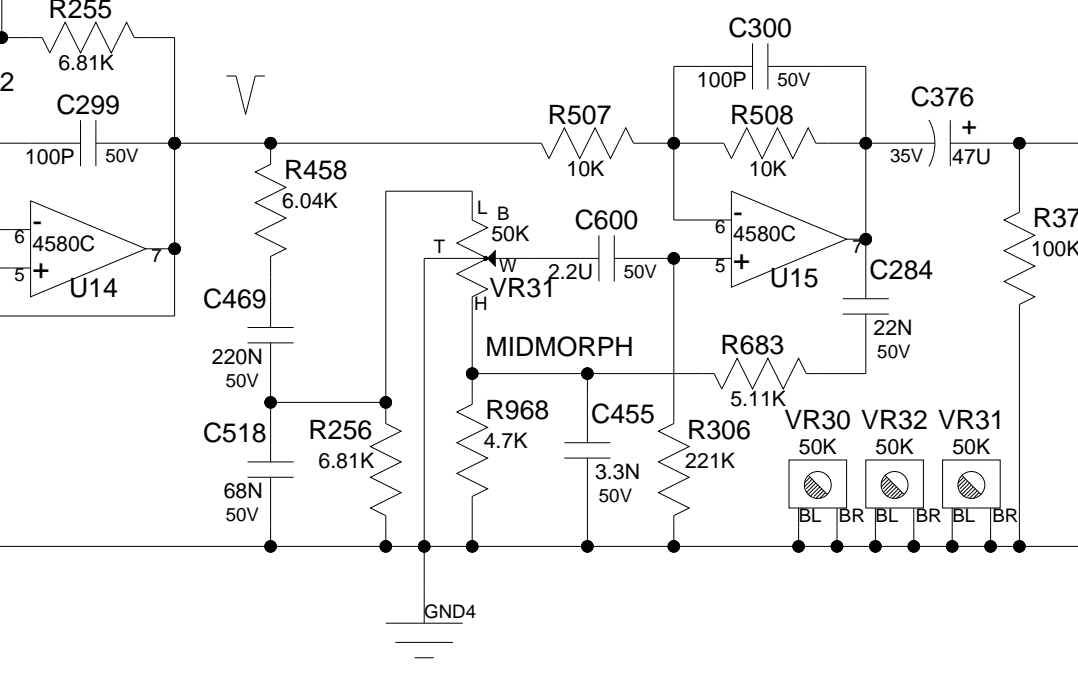
LOW EQ



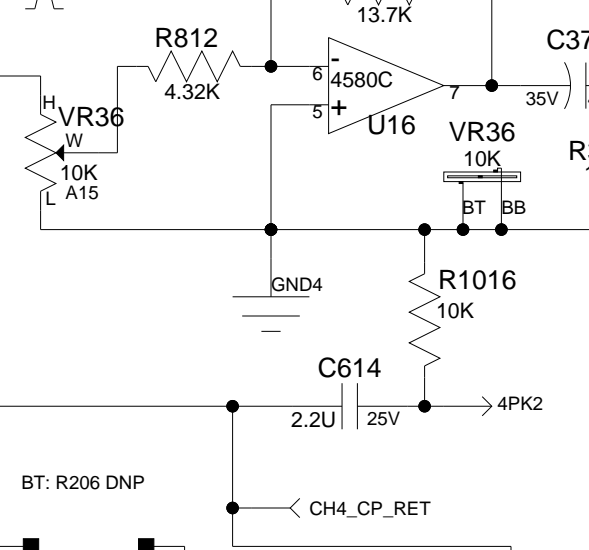
HIGH EQ



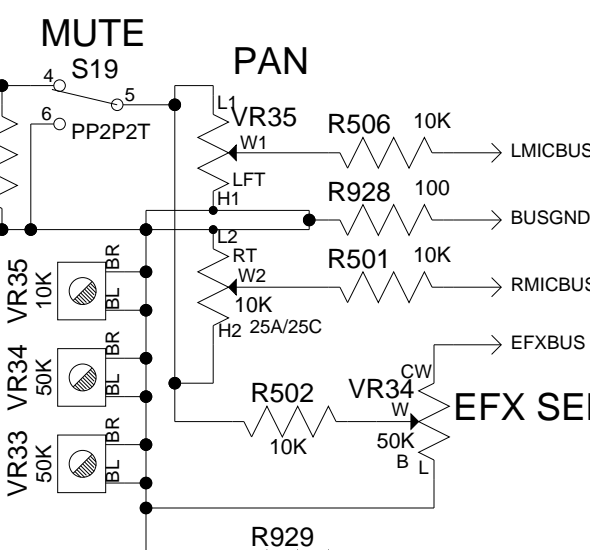
MIDMORPH



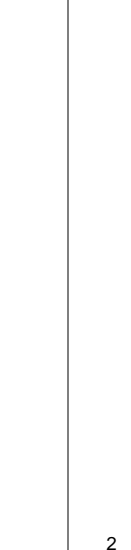
LEVEL



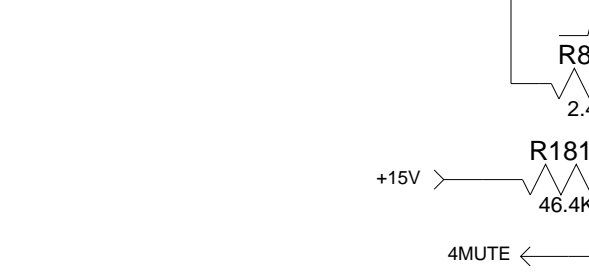
MUTE



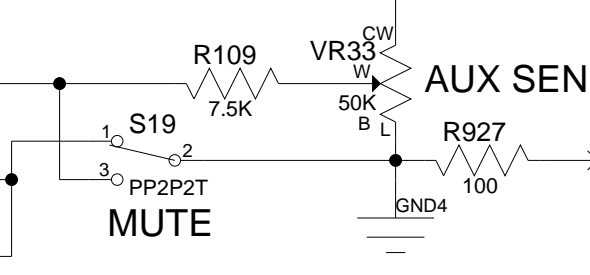
PAN



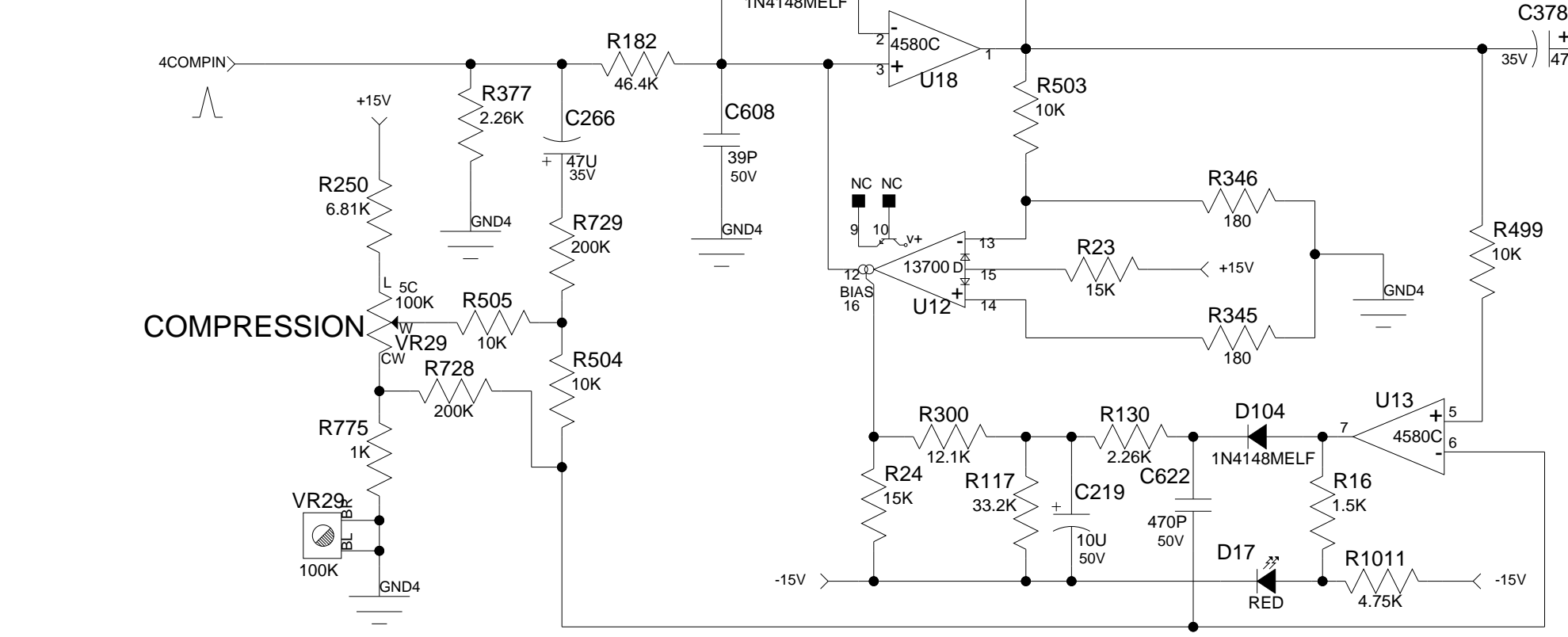
EQ BYPASS



AUX SEND

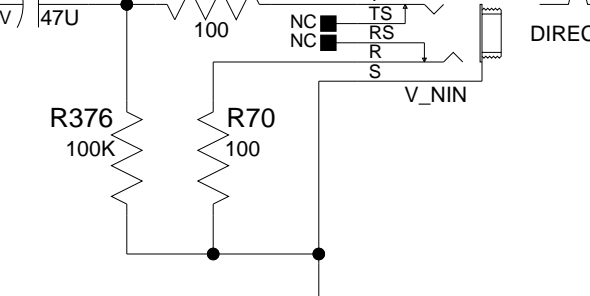


CHANNEL COMPRESSOR

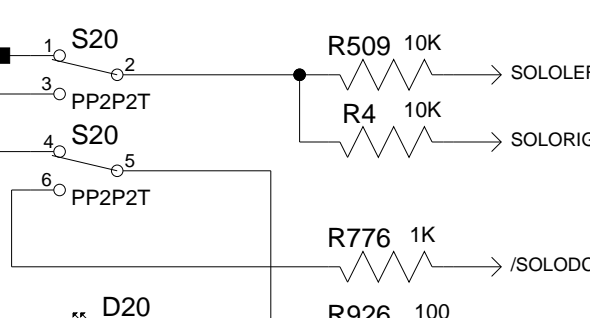


COMPRESSOR ACTIVITY

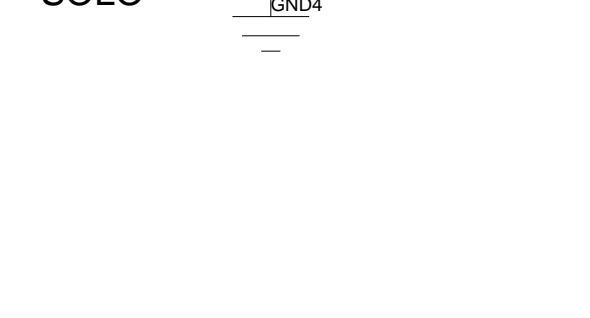
DIRECT OUT



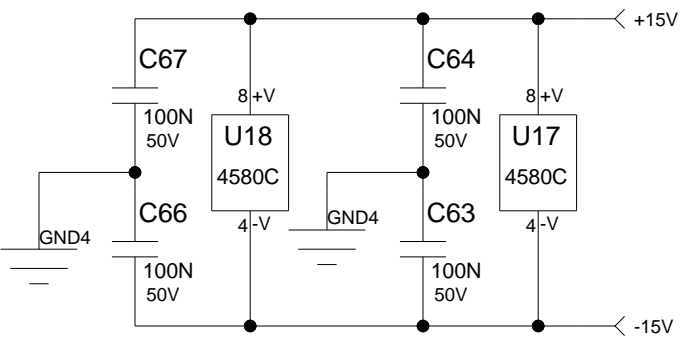
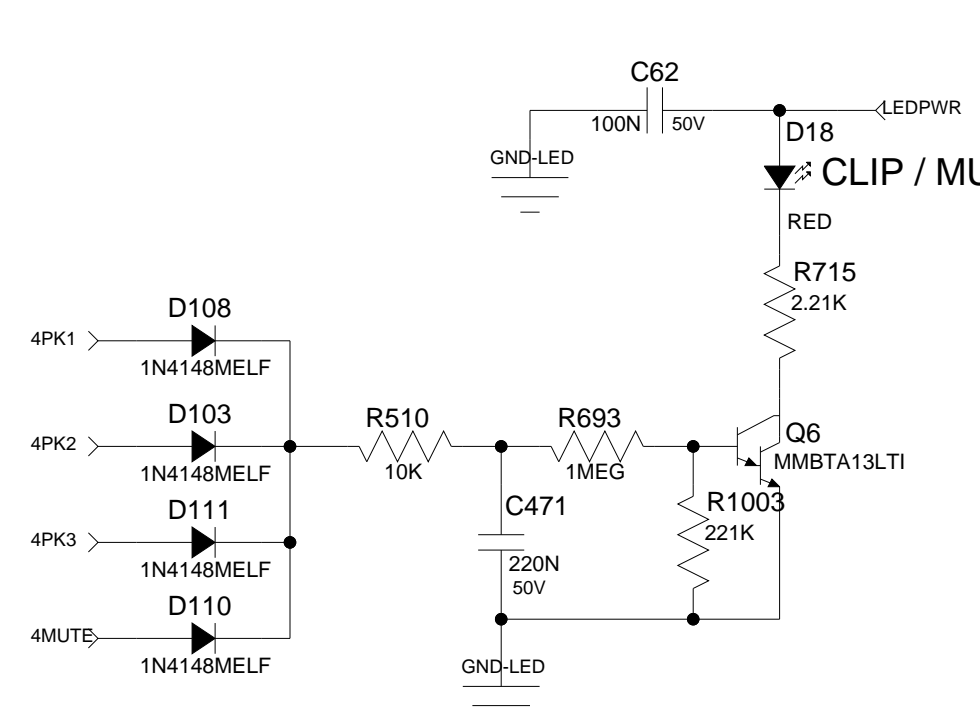
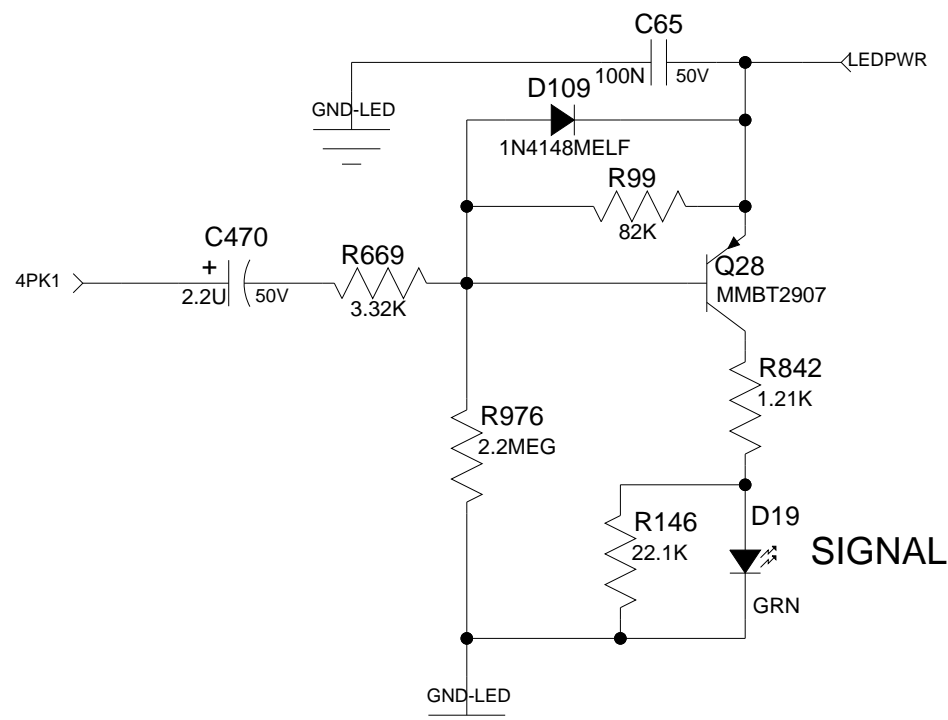
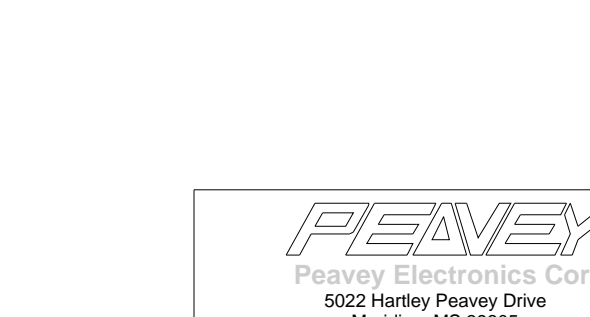
SOLO LEFT



SOLO RIGHT

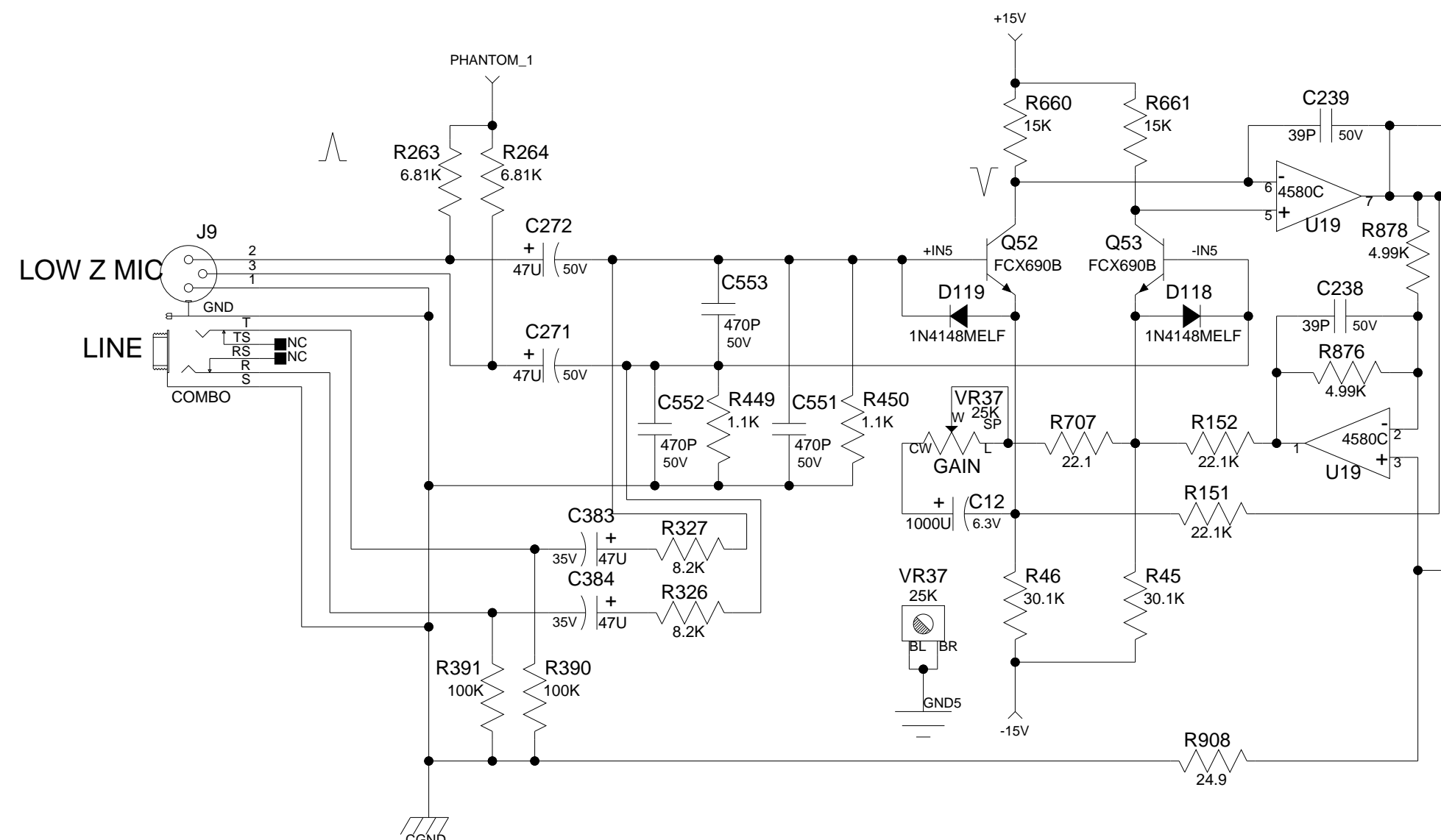


SOLO

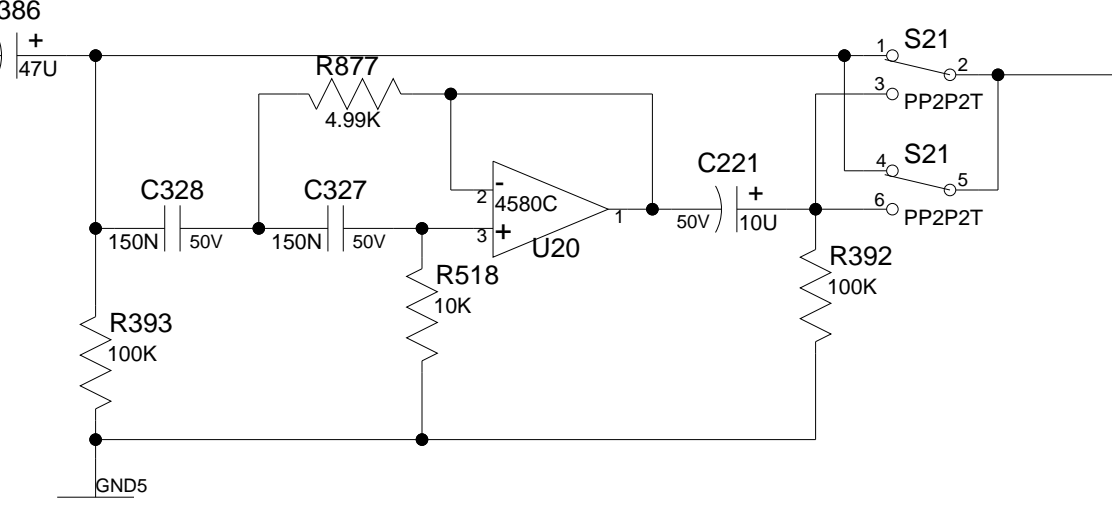


Title: PV14BT\_CH\_R4  
Channel 4

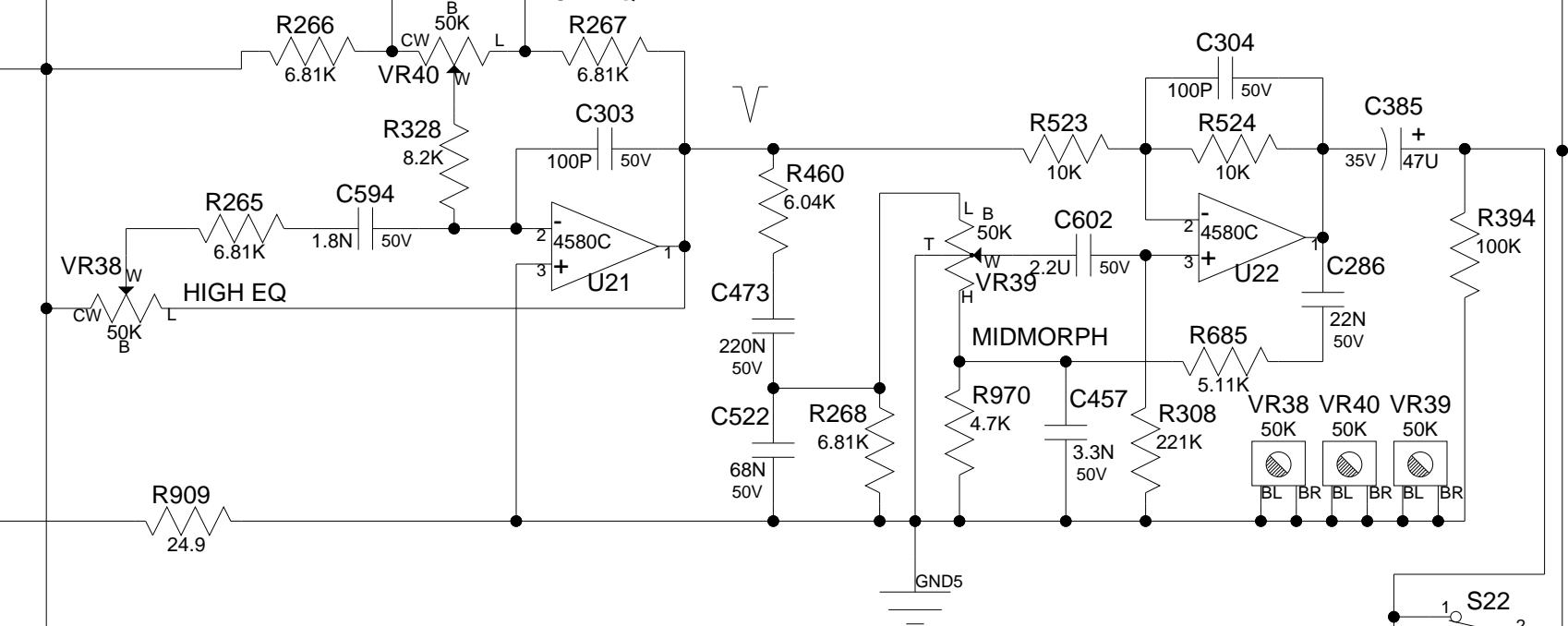
INPUT FIVE



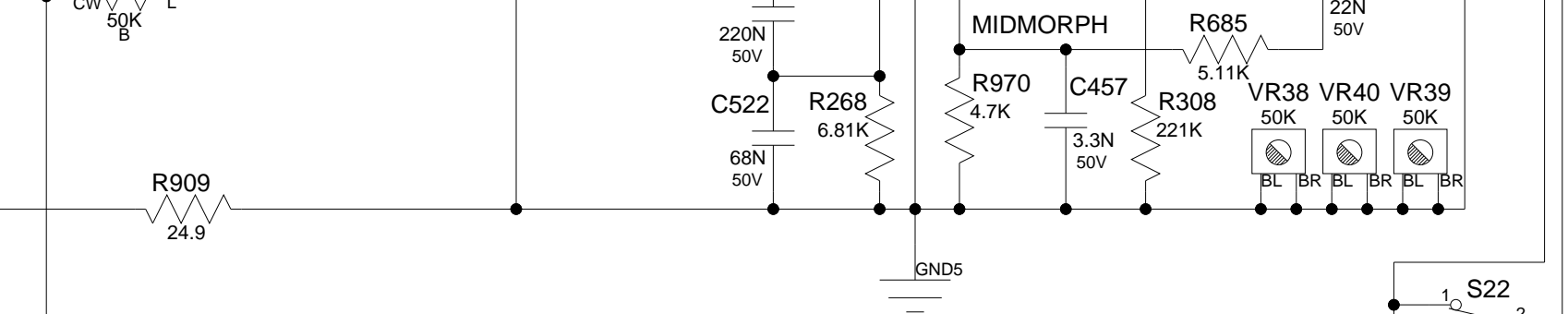
HI PASS



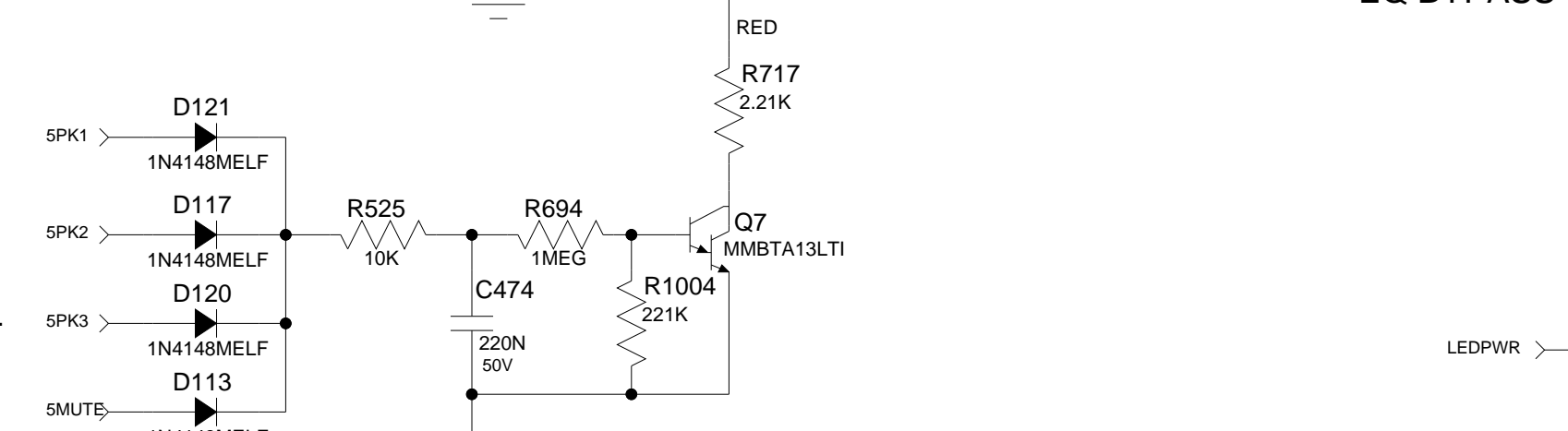
LOW EQ



HIGH EQ



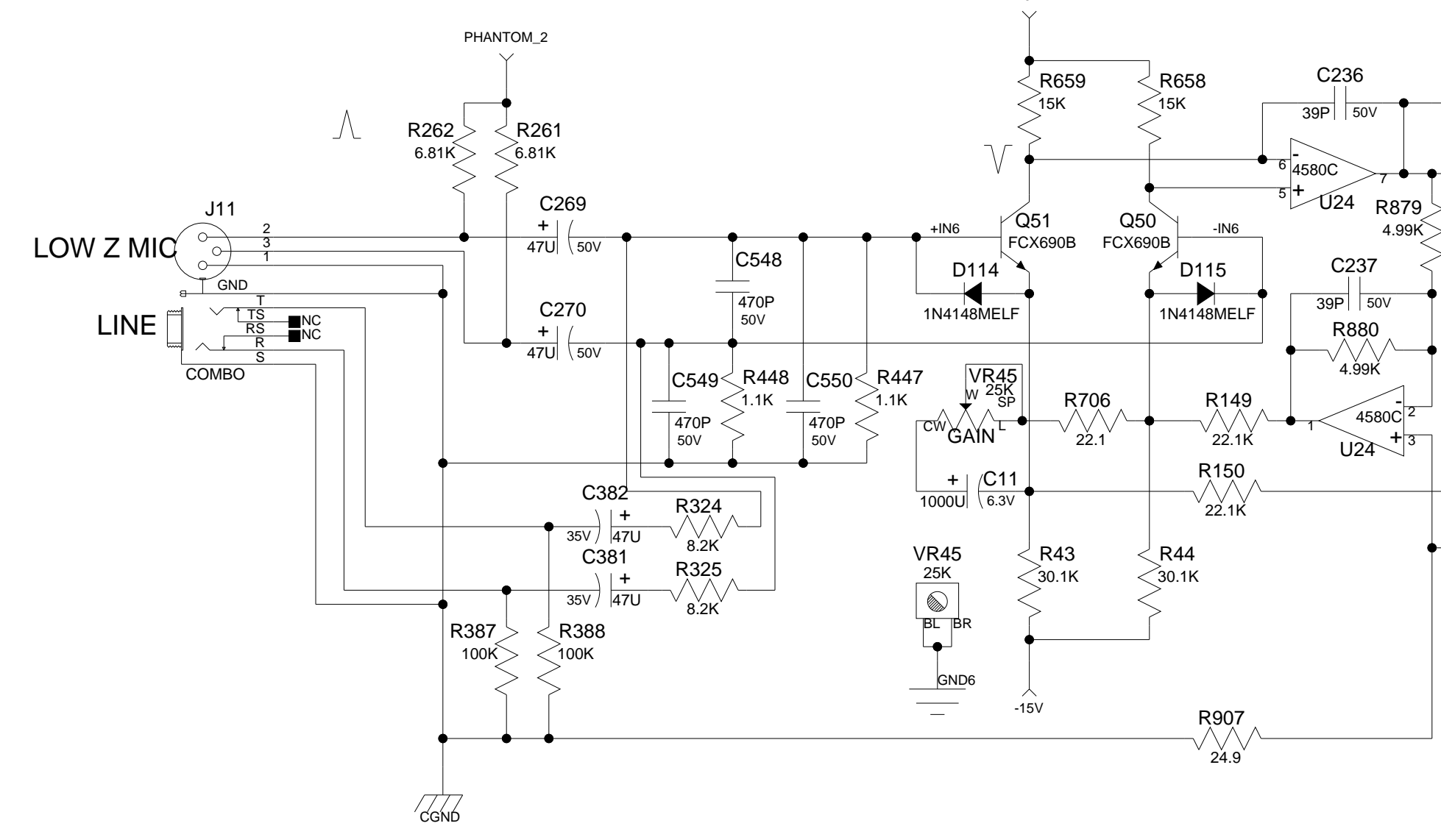
MIDMORPH



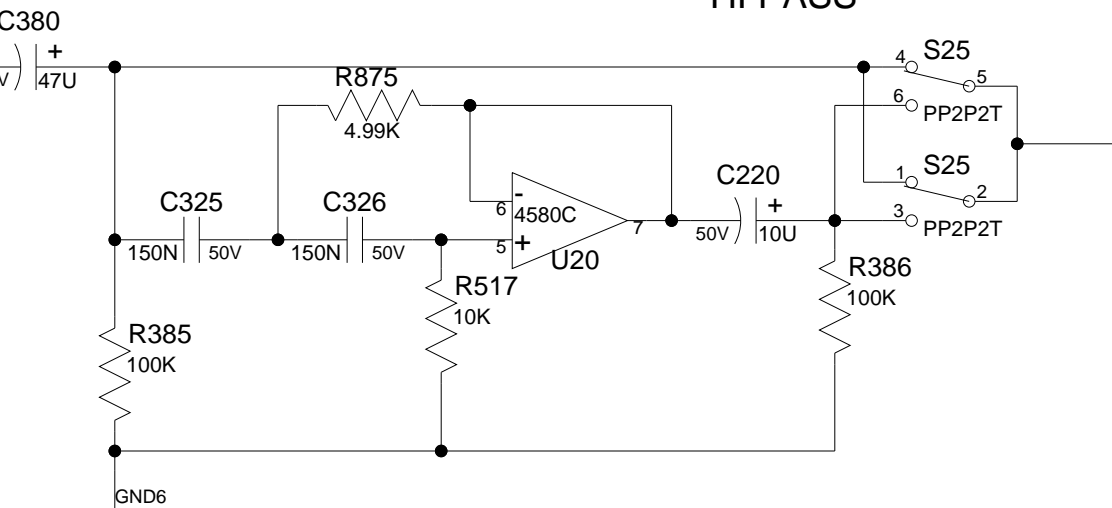
EQ BYPASS



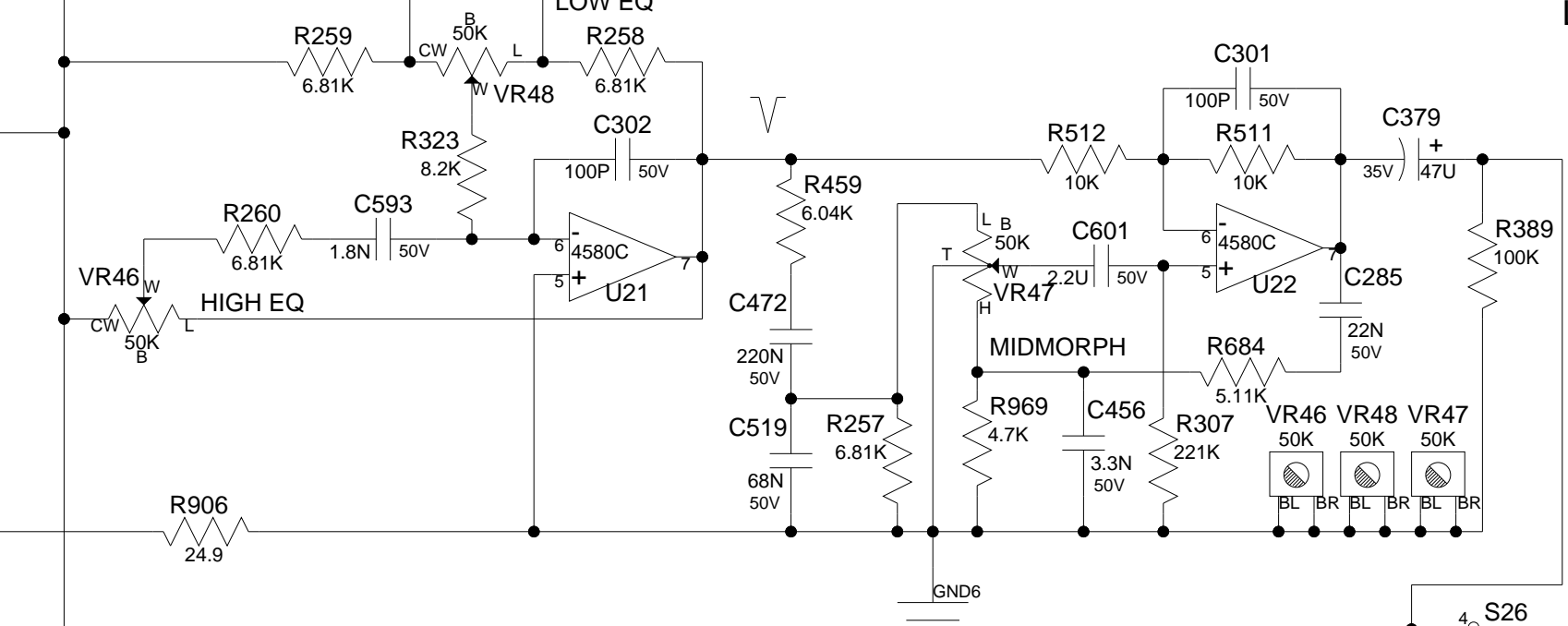
INPUT SIX



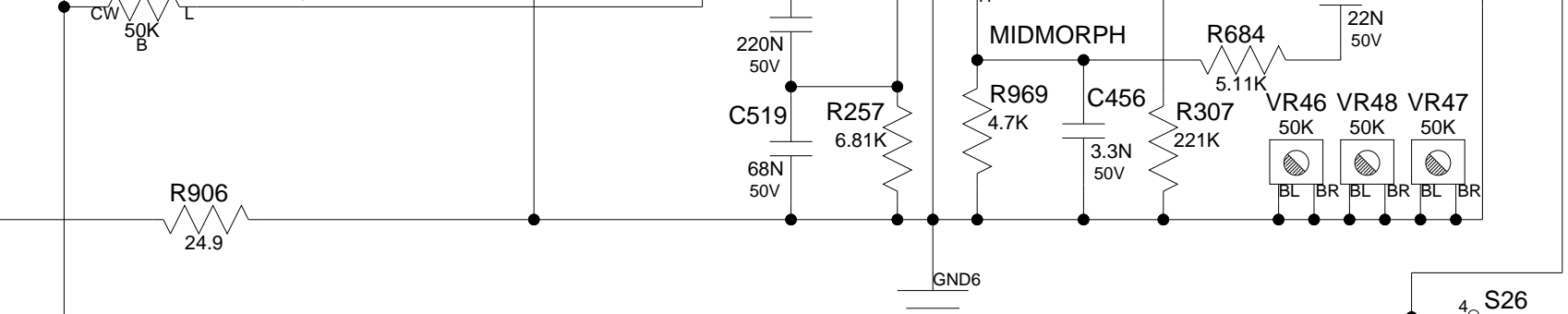
HI PASS



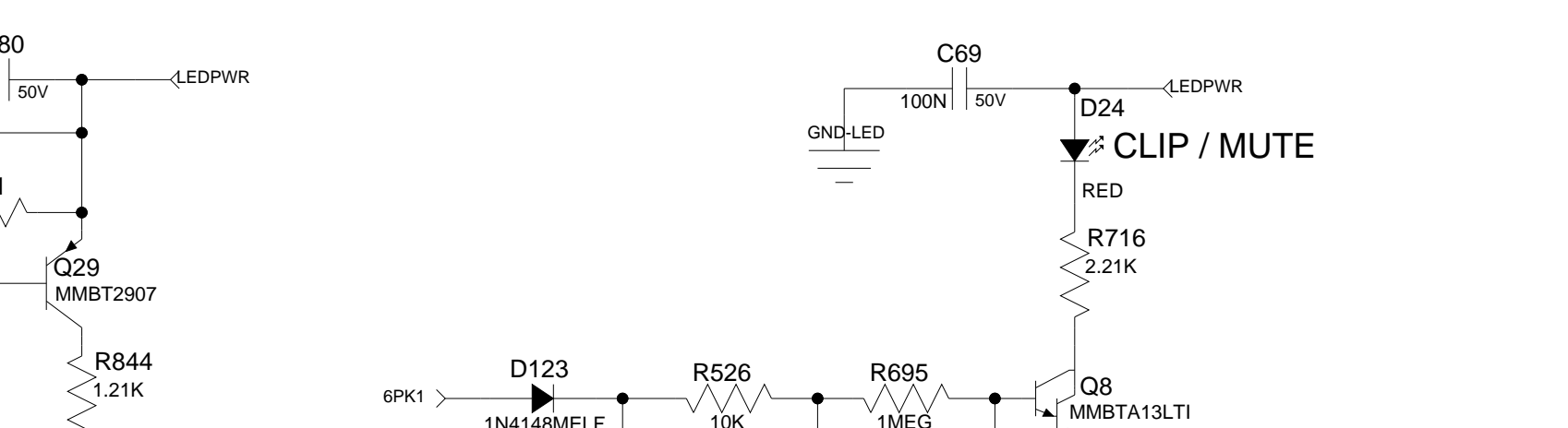
LOW EQ



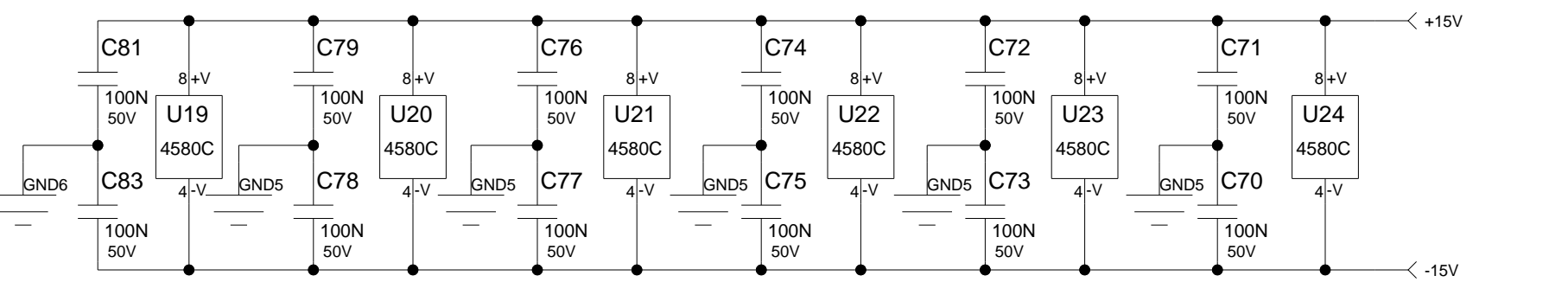
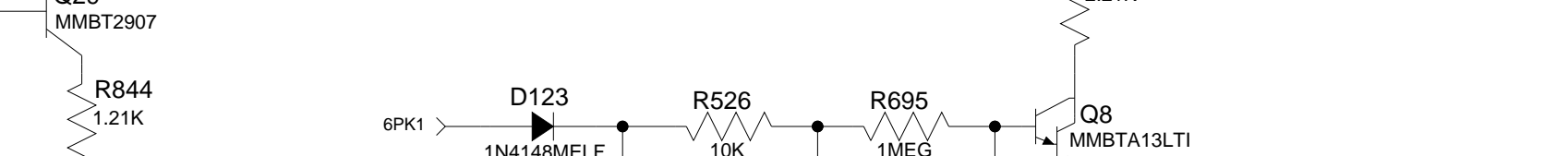
HIGH EQ



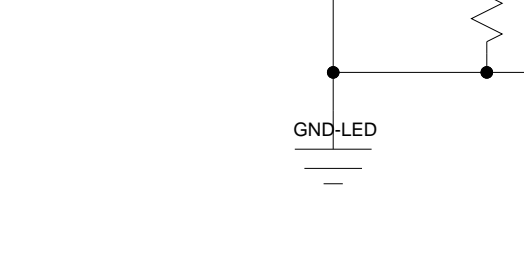
MIDMORPH



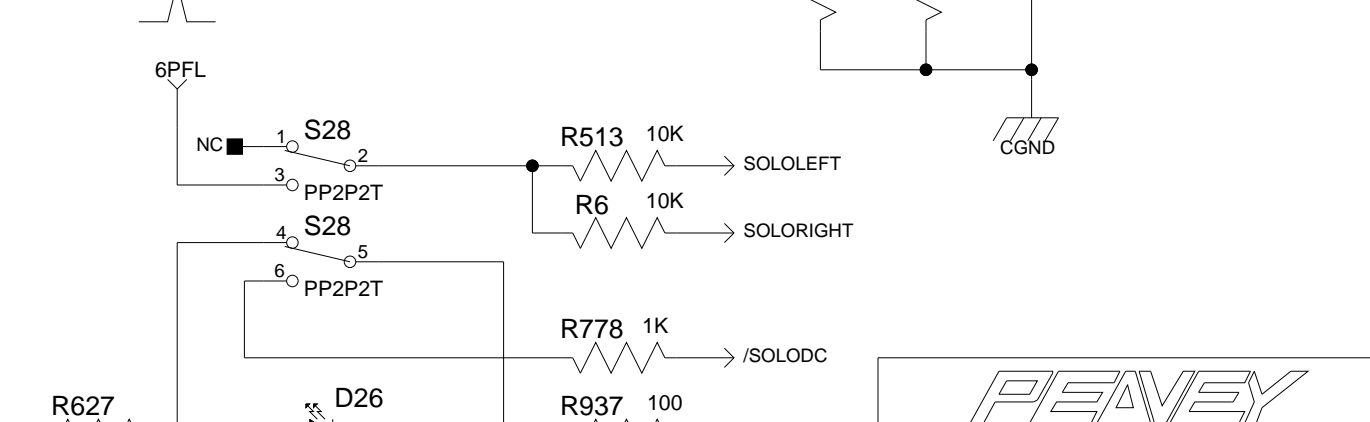
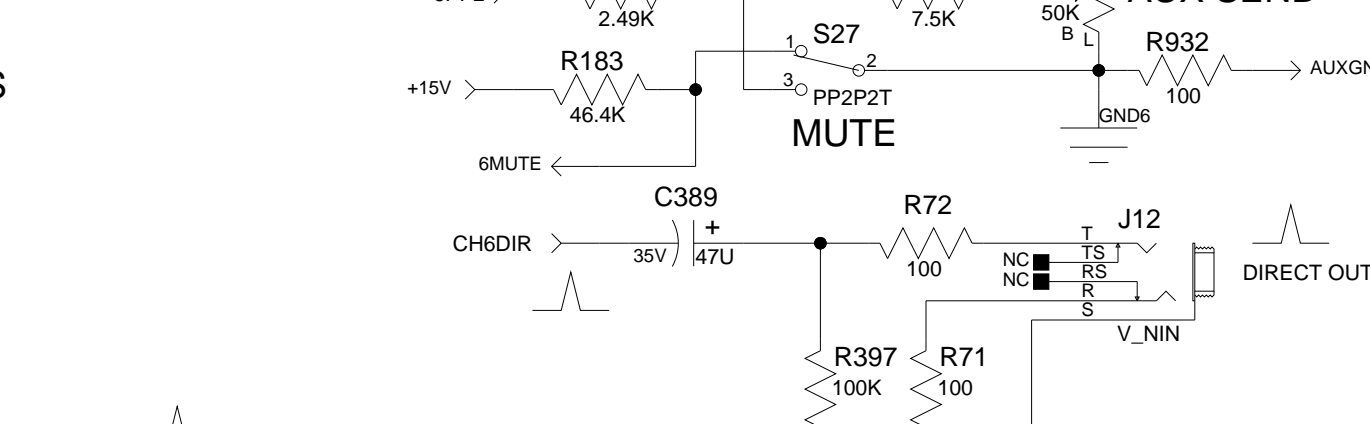
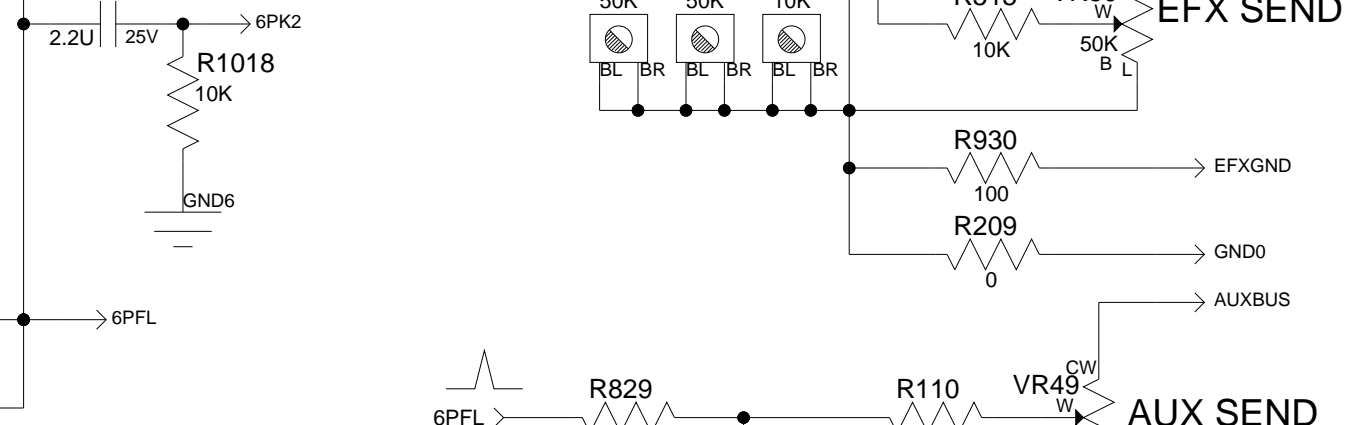
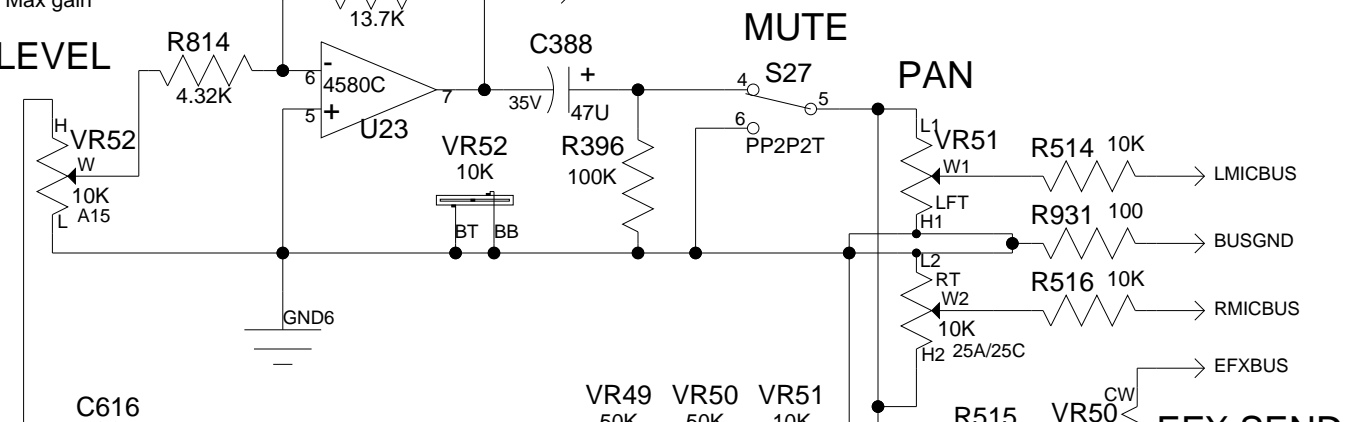
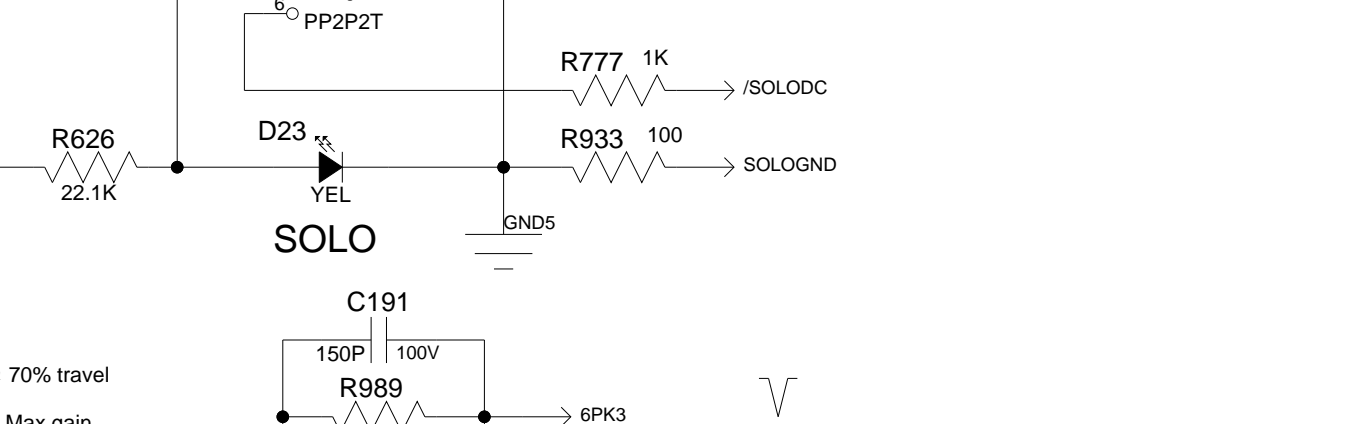
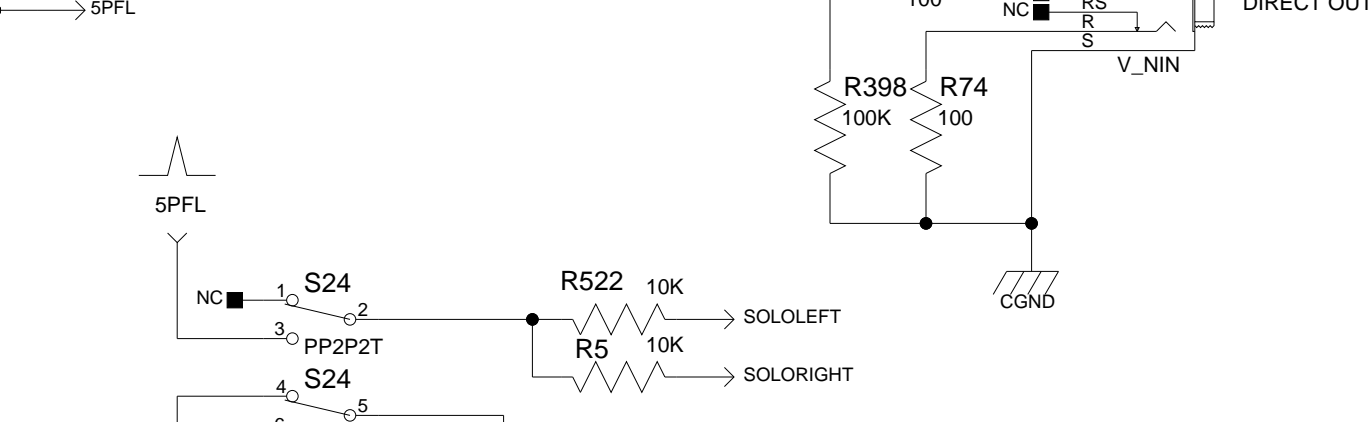
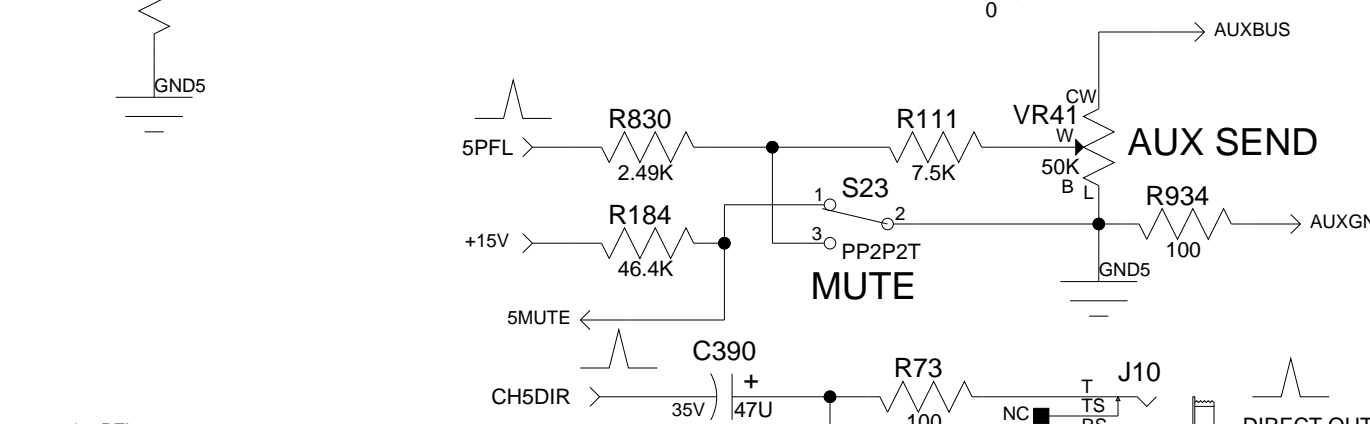
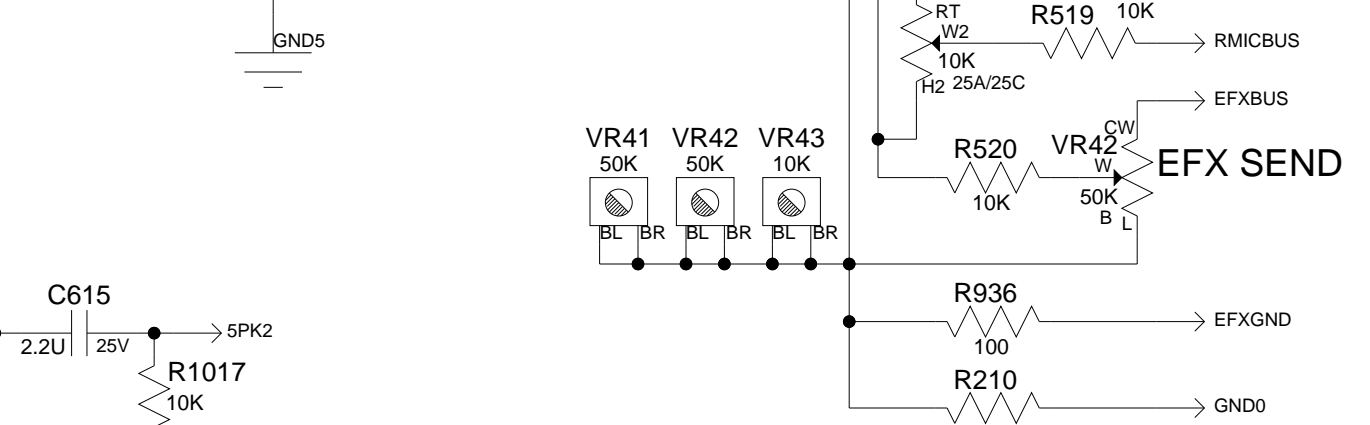
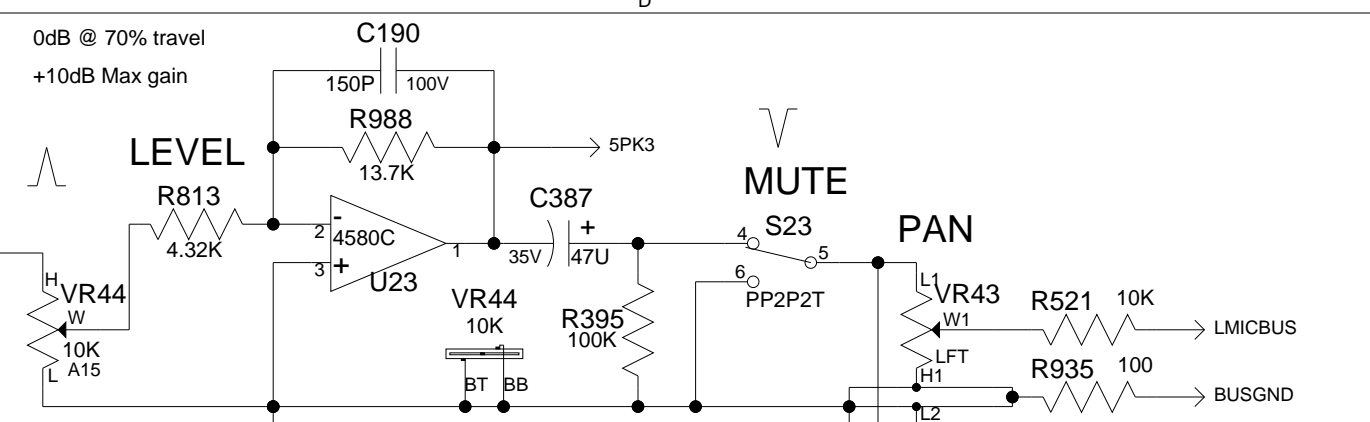
EQ BYPASS



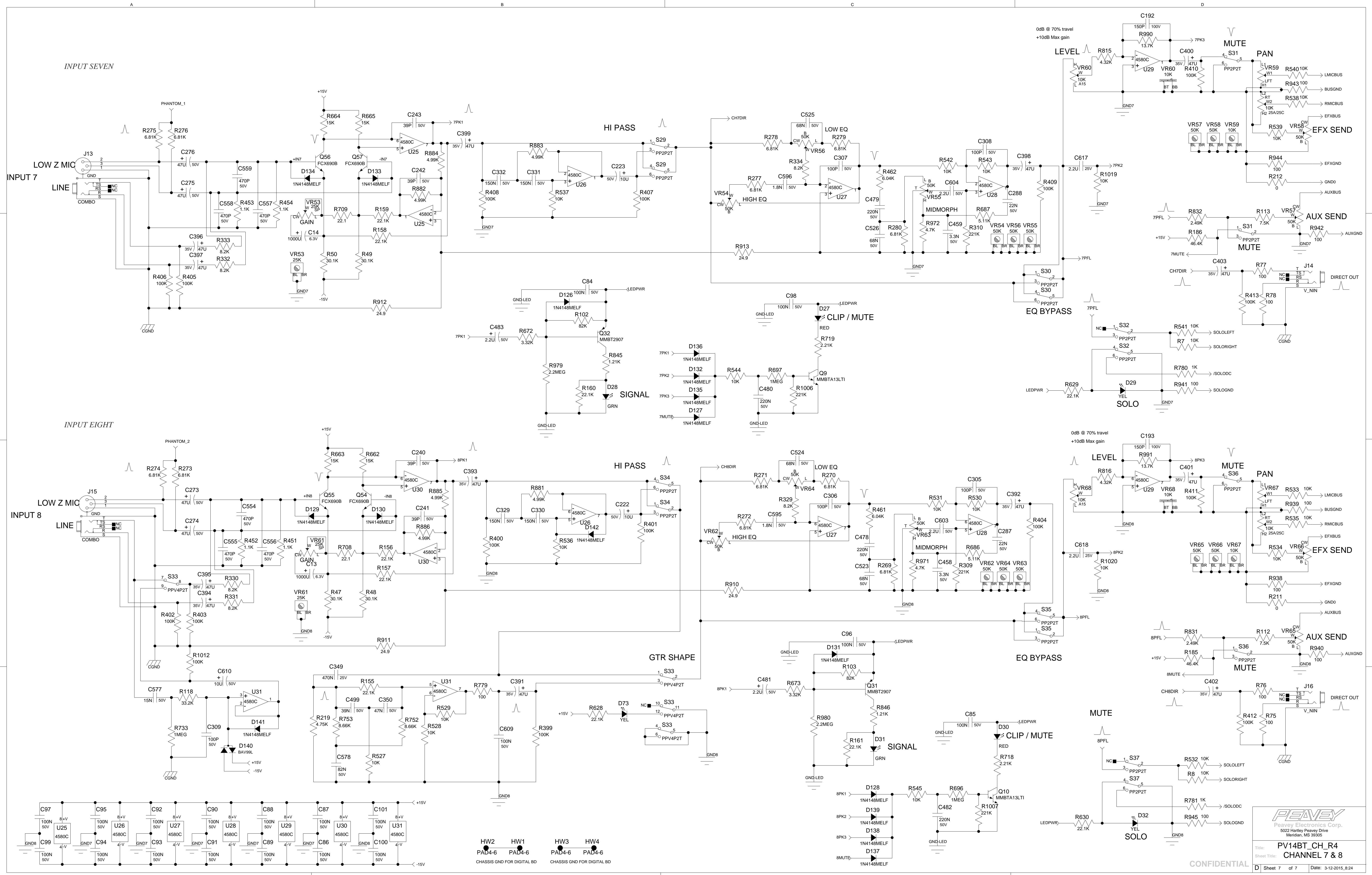
CLIP / MUTE



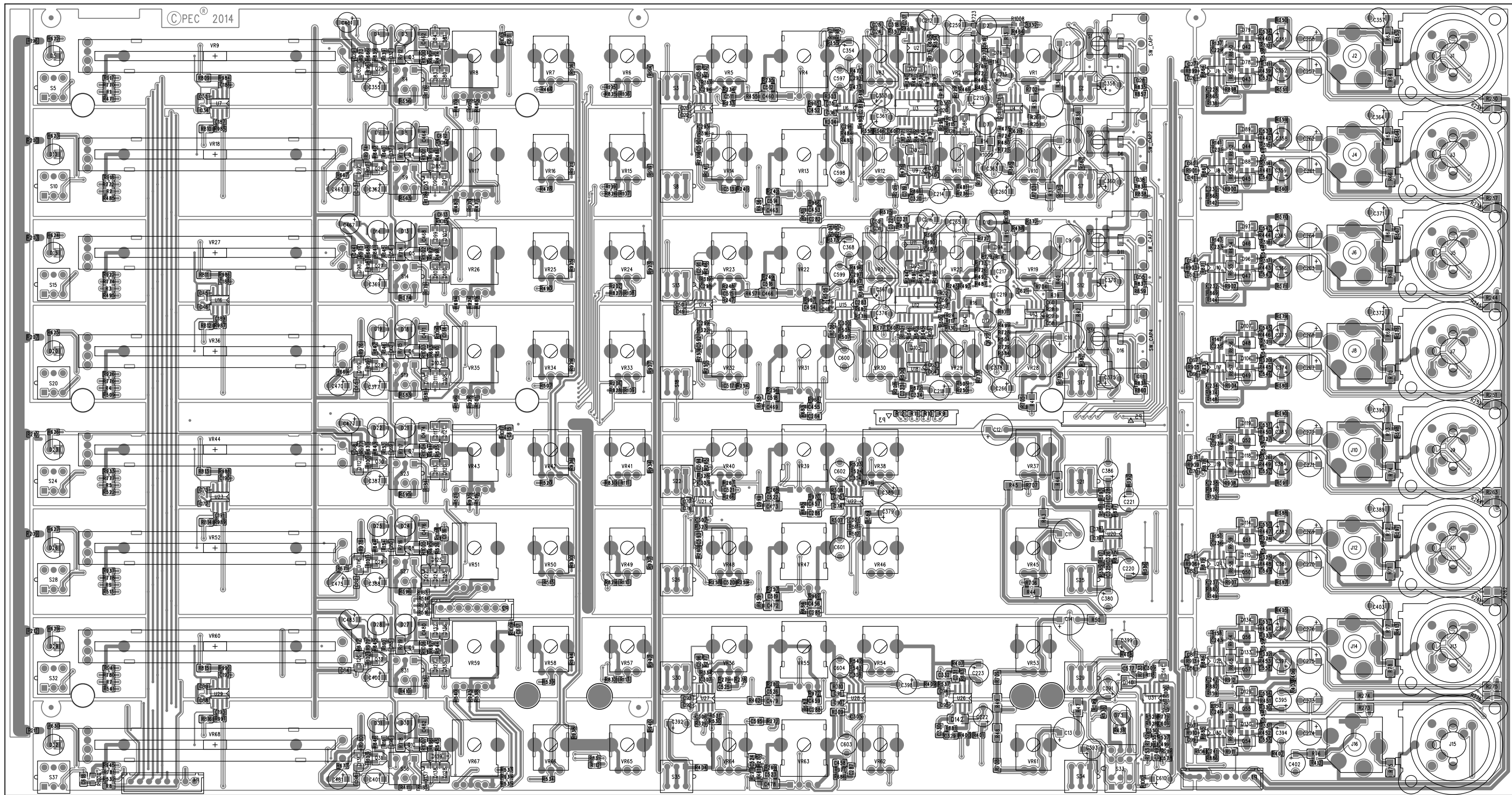
SIGNAL



CONFIDENTIAL



CONFIDENTIAL





BILL OF MATERIAL REPORT  
-----

REPORT DATE/TIME: 3/16/2015 11:41:45 AM

BOARD NAME: PV 14 BT Channel      ASSEMBLY LEVEL NUMBER: 32206591

PROJECT NUMBER: P1300032      DESIGNER: FJE - 32102216

Qty.	Part #	Description	Reference Designators
16	30200056	30.1K 1/4W 1% MF 1206	R35 R36 R37 R38 R39 R40 R41 R42 R43 R44 R45 R46 R47 R48 R49 R50
16	30200060	100 1/4W 1% MF 1206	R63 R64 R65 R66 R67 R68 R69 R70 R71 R72 R73 R74 R75 R76 R77 R78
16	30200084	6.81K 1/4W 1% MF 1206	R230 R231 R237 R238 R244 R245 R251 R252 R261 R262 R263 R264 R273 R274 R275 R276
4	30200128	1.50K 1/4W 1% MF 1206	R13 R14 R15 R16
16	30200175	1.1K 1/10W 1% MF 0805	R439 R440 R441 R442 R443 R444 R445 R446 R447 R448 R449 R450 R451 R452 R453 R454
1	30200195	1.00M 1/10W 1% MF 0805	R733
8	30200214	2.21K 1/4W 1% MF 1206	R712 R713 R714 R715 R716 R717 R718 R719
18	30200281	0.0 JUMPER 0.1 0603	R9 R10 R11 R12 R196 R197 R198 R200 R201 R203 R204 R205 R207 R208 R209 R210 R211 R212
8	30200283	1.21K 1/10W 1% MF 0603	R839 R840 R841 R842 R843 R844 R845 R846

4	30200286	10	1/10W	1% MF	0603	R25 R26 R27 R28
33	30200287	100	1/10W	1% MF	0603	R779 R914 R915 R916 R917 R918 R919 R920 R921 R922 R923 R924 R925 R926 R927 R928 R929 R930 R931 R932 R933 R934 R935 R936 R937 R938 R939 R940 R941 R942 R943 R944 R945
99	30200289	10K	1/10W	1% MF	0603	R1 R2 R3 R4 R5 R6 R7 R8 R463 R464 R465 R466 R467 R468 R469 R470 R471 R472 R473 R474 R475 R476 R477 R478 R479 R480 R481 R482 R483 R484 R485 R486 R487 R488 R489 R490 R491 R492 R493 R494 R495 R496 R497 R498 R499 R500 R501 R502 R503 R504 R505 R506 R507 R508 R509 R510 R511 R512 R513 R514 R515 R516 R517 R518 R519 R520 R521 R522 R523 R524 R525 R526 R527 R528 R529 R530 R531 R532 R533 R534 R535 R536 R537 R538 R539 R540 R541 R542 R543 R544 R545 R1013 R1014 R1015 R1016 R1017 R1018 R1019 R1020
8	30200291	13.7K	1/10W	1% MF	0603	R984 R985 R986 R987 R988 R989 R990 R991
12	30200294	1K	1/10W	1% MF	0603	R769 R770 R771 R772 R773 R774 R775 R776 R777 R778 R780 R781
34	30200296	22.1K	1/10W	1% MF	0603	R137 R138 R139 R140 R141 R142 R143 R144 R145 R146 R147 R148 R149 R150 R151 R152 R153 R154 R155 R156 R157 R158 R159 R160 R161 R622 R623 R624

						R625 R626 R627 R628 R629 R630
8	30200301	3.32K	1/10W	1% MF	0603	R666 R667 R668 R669 R670 R671 R672 R673
8	30200310	4.7K	1/10W	5% MF	0603	R965 R966 R967 R968 R969 R970 R971 R972
36	30200319	6.81K	1/10W	1% MF	0603	R229 R232 R233 R234 R235 R236 R239 R240 R241 R242 R243 R246 R247 R248 R249 R250 R253 R254 R255 R256 R257 R258 R259 R260 R265 R266 R267 R268 R269 R270 R271 R272 R277 R278 R279 R280
24	30200323	8.2K	1/10W	1% MF	0603	R311 R312 R313 R314 R315 R316 R317 R318 R319 R320 R321 R322 R323 R324 R325 R326 R327 R328 R329 R330 R331 R332 R333 R334
8	30200324	82K	1/10W	5% MF	0603	R96 R97 R98 R99 R100 R101 R102 R103
8	30200327	6.04K	1/10W	1% MF	0805	R455 R456 R457 R458 R459 R460 R461 R462
16	30200342	221K	1/10W	1% MF	0805	R303 R304 R305 R306 R307 R308 R309 R310 R1000 R1001 R1002 R1003 R1004 R1005 R1006 R1007
8	30200368	7.5K	1/10W	1% MF	0603	R106 R107 R108 R109 R110 R111 R112 R113
8	30200374	4.32K	1/10W	1% MF	0805	R809 R810 R811 R812 R813 R814 R815 R816
8	30200404	200K	1/10W	1% MF	0603	R722 R723 R724 R725 R726 R727 R728 R729

2	30200427	8.66K	1/10W	1% MF	0805	R752 R753
8	30200443	2.2M	1/10W	5%	0805	R973 R974 R975 R976 R977 R978 R979 R980
8	30200456	180	1/10W	1% MF	0603	R339 R340 R341 R342 R343 R344 R345 R346
8	30200469	2.49K	1/10W	1% MF	0603	R825 R826 R827 R828 R829 R830 R831 R832
5	30200471	4.75K	1/10W	1% MF	0603	R219 R1008 R1009 R1010 R1011
8	30200472	5.11K	1/10W	1% MF	0603	R680 R681 R682 R683 R684 R685 R686 R687
62	30200475	100K	1/10W	1% MF	0603	R349 R350 R351 R352 R353 R355 R356 R357 R358 R359 R360 R361 R362 R363 R364 R365 R367 R369 R370 R371 R372 R373 R374 R375 R376 R378 R379 R380 R381 R382 R383 R384 R385 R386 R387 R388 R389 R390 R391 R392 R393 R394 R395 R396 R397 R398 R399 R400 R401 R402 R403 R404 R405 R406 R407 R408 R409 R410 R411 R412 R413 R1012
8	30200476	1M	1/10W	1% MF	0603	R690 R691 R692 R693 R694 R695 R696 R697
16	30200477	24.9	1/10W	1% MF	0805	R898 R899 R900 R901 R902 R903 R904 R905 R906 R907 R908 R909 R910 R911 R912 R913
8	30200495	22.1	1/10W	1% MF	0805	R702 R703 R704 R705 R706 R707 R708 R709
16	30200510	15K	1% 1/4W	1206	THIN FILM	R650 R651 R652 R653 R654 R655 R656 R657 R658 R659 R660 R661 R662 R663 R664 R665

8	30200524	2.26K	1/4W	1%	0603	R127 R128 R129 R130 R354 R366 R368 R377
8	30200527	15K	1/10W	1%	0603	R17 R18 R19 R20 R21 R22 R23 R24
5	30200539	33.2K	1%	1/10W	0603	R114 R115 R116 R117 R118
24	30200553	4.99K	1%	1/10W	0603	R863 R864 R865 R866 R867 R868 R869 R870 R871 R872 R873 R874 R875 R876 R877 R878 R879 R880 R881 R882 R883 R884 R885 R886
12	30200623	46.4K	1/10W	1% MF	0603	R175 R176 R177 R178 R179 R180 R181 R182 R183 R184 R185 R186
4	30200643	12.1K	1/10W	1% THKF	0603	R297 R298 R299 R300
16	30300069	0.22UF	50V	10%	X7R 1206	C460 C462 C463 C464 C466 C468 C469 C471 C472 C473 C474 C476 C478 C479 C480 C482
79	30300128	0.1UF	50V	+80/-20%	Y5V 0603	C20 C21 C22 C23 C24 C25 C26 C27 C29 C30 C31 C32 C33 C34 C35 C36 C37 C39 C40 C41 C42 C43 C44 C45 C46 C47 C48 C49 C50 C51 C52 C53 C54 C56 C57 C58 C59 C60 C62 C63 C64 C65 C66 C67 C68 C69 C70 C71 C72 C73 C74 C75 C76 C77 C78 C79 C80 C81 C82 C83 C84 C85 C86 C87 C88 C89 C90 C91 C92 C93 C94 C95 C96 C97 C98 C99 C100 C101 C609

17	30300133	100PF 50V 5% NPO 0603	C293 C294 C295 C296 C297 C298 C299 C300 C301 C302 C303 C304 C305 C306 C307 C308 C309
8	30300145	3300PF 50V 5% X7R 0805	C452 C453 C454 C455 C456 C457 C458 C459
8	30300148	0.022UF 50V 5% X7R 0805	C281 C282 C283 C284 C285 C286 C287 C288
1	30300154	0.015UF 50V 10% X7R 0805	C577
16	30300176	0.068UF 50V 5% X7R 0805	C511 C512 C513 C514 C515 C516 C517 C518 C519 C520 C521 C522 C523 C524 C525 C526
1	30300198	47NF 50V 10% X7R 0603	C350
8	30300212	150PF 100V 5% NPO 0603	C186 C187 C188 C189 C190 C191 C192 C193
1	30300217	0.47UF 25V 5% X7R 0805	C349
20	30300220	39PF 50V 5% NPO 0603	C228 C229 C230 C231 C232 C233 C234 C235 C236 C237 C238 C239 C240 C241 C242 C243 C605 C606 C607 C608
28	30300222	470PF 50V 5% NPO 0603	C536 C537 C538 C539 C540 C541 C542 C543 C544 C545 C546 C547 C548 C549 C550 C551 C552 C553 C554 C555 C556 C557 C558 C559 C619 C620 C621 C622
8	30300234	1800PF 50V 5% NPO 0805	C589 C590 C591 C592 C593 C594 C595 C596
8	30300258	2.2UF 25V 10% X7R 0805	C611 C612 C613 C614 C615 C616 C617 C618
16	30300270	150NF 50V 5% X7R 0805	C317 C318 C319 C320 C321 C322 C323 C324

C325 C326 C327 C328  
C329 C330 C331 C332

1	30300343	39NF	50V 10% X7R 0603	C499
1	30300344	82NF	50V 10% X7R 0603	C578
8	30320180	2.2UF	50V 20% EL RAD	C461 C465 C467 C470 C475 C477 C481 C483
16	30320182	47UF	50V 20% EL RAD	C257 C258 C261 C262 C263 C264 C267 C268 C269 C270 C271 C272 C273 C274 C275 C276
8	30320184	2.2UF	50V 20% ELN RAD	C597 C598 C599 C600 C601 C602 C603 C604
13	30320185	10UF	50V 20% ELL RAD	C212 C213 C214 C215 C216 C217 C218 C219 C220 C221 C222 C223 C610
8	30320306	1000UF	6.3V 20% EL RAD	C7 C8 C9 C10 C11 C12 C13 C14
57	30320344	47UF	35V 20% EL RAD	C259 C260 C265 C266 C351 C352 C353 C354 C355 C356 C357 C358 C359 C360 C361 C362 C363 C364 C365 C366 C367 C368 C369 C370 C371 C372 C373 C374 C375 C376 C377 C378 C379 C380 C381 C382 C383 C384 C385 C386 C387 C388 C389 C390 C391 C392 C393 C394 C395 C396 C397 C398 C399 C400 C401 C402 C403
66	30418026	1N4148 (LL34)	DIODE SMT	D76 D77 D78 D79 D80 D81 D82 D83 D84 D85 D86 D87 D88 D89 D90 D91 D92 D93 D94 D95 D96 D97 D98 D99 D100 D101 D102 D103 D104 D105 D106 D107 D108 D109 D110 D111

D112 D113 D114 D115  
D116 D117 D118 D119  
D120 D121 D122 D123  
D124 D125 D126 D127  
D128 D129 D130 D131  
D132 D133 D134 D135  
D136 D137 D138 D139  
D141 D142

Q3 Q4 Q5 Q6  
Q7 Q8 Q9 Q10

U3 U12

Q25 Q26 Q27 Q28  
Q29 Q30 Q31 Q32

D140

U1 U2 U4 U5  
U6 U7 U8 U9  
U10 U11 U13 U14  
U15 U16 U17 U18  
U19 U20 U21 U22  
U23 U24 U25 U26  
U27 U28 U29 U30  
U31

Q42 Q43 Q44 Q45  
Q46 Q47 Q48 Q49  
Q50 Q51 Q52 Q53  
Q54 Q55 Q56 Q57

D2 D3 D7 D8  
D12 D13 D17 D18  
D21 D24 D27 D30

D4 D9 D14 D19  
D22 D25 D28 D31

D5 D10 D15 D20  
D23 D26 D29 D32  
D73

VR3 VR5 VR12 VR14  
VR21 VR23 VR30 VR32  
VR38 VR40 VR46 VR48  
VR54 VR56 VR62 VR64

VR1 VR10 VR19 VR28

8 30418051 MMBTA13LTI NPN DARL. SMT

2 30418231 NJM13700 DUAL OTA SMT

8 30418284 MMBT2907 PNP SOT23

1 30418655 BAV99L DUAL 4148 DIODE SO

29 30418958 4580C DUAL LN OPAMP SO8

16 30419281 FCX690B LOW NOISE NPN SOT89

12 30450050 RED T1 LED W/.500" SPCR

8 30450051 GRN T1 LED W/.500" SPCR

9 30450052 YEL T1 LED W/.500" SPCR

16 31190259 50KB SNGL 9MM DET VER

8 31190261 25KSP SNGL 9MM VER



						VR37 VR45 VR53 VR61
16	31190266	50KB	SNGL	9MM	VER	VR6 VR7 VR15 VR16 VR24 VR25 VR33 VR34 VR41 VR42 VR49 VR50 VR57 VR58 VR65 VR66
8	31190710	10KA/C	DUAL	12MM	DET VER	VR8 VR17 VR26 VR35 VR43 VR51 VR59 VR67
8	31191022	50KB	SNGL	12MM	VER	VR4 VR13 VR22 VR31 VR39 VR47 VR55 VR63
8	31191065	10K_	SNGL	60MM	VER	VR9 VR18 VR27 VR36 VR44 VR52 VR60 VR68
4	31191532	100K5C	SNGL	9MM	VER	VR2 VR11 VR20 VR29
32	31322356	SWITCH	DPDT	2.8MM	SHFT V	S2 S3 S4 S5 S7 S8 S9 S10 S12 S13 S14 S15 S17 S18 S19 S20 S21 S22 S23 S24 S25 S26 S27 S28 S29 S30 S31 S32 S34 S35 S36 S37
1	31322360	SWITCH	4PDT	2.8MM	SHFT V	S33
8	31466543	STEREO	HID	JACK	NINS W/SPD	J2 J4 J6 J8 J10 J12 J14 J16
8	31466558	COMB	COAXL	FXLR-1/4JK	V	J1 J3 J5 J7 J9 J11 J13 J15
3	33716928	8 HDR	V	SR	2.5MM TIN	P1 P2 P4

-----  
 END OF BILL OF MATERIAL REPORT  
 -----