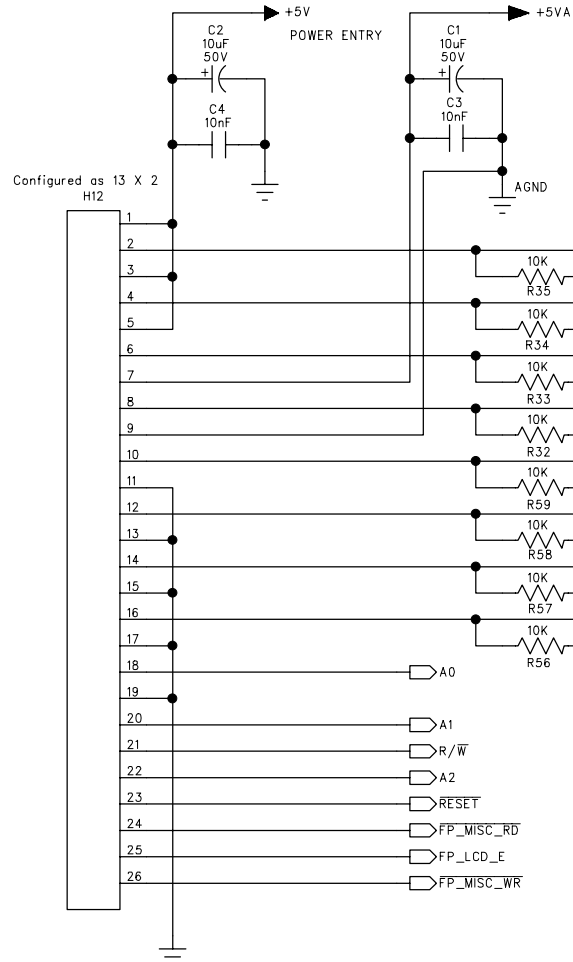
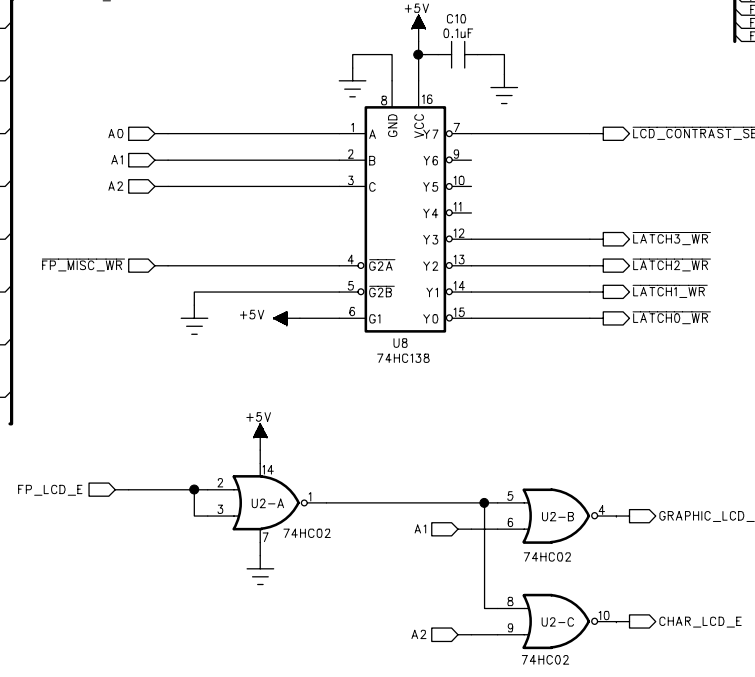


INTERFACE TO DIGITAL PCB



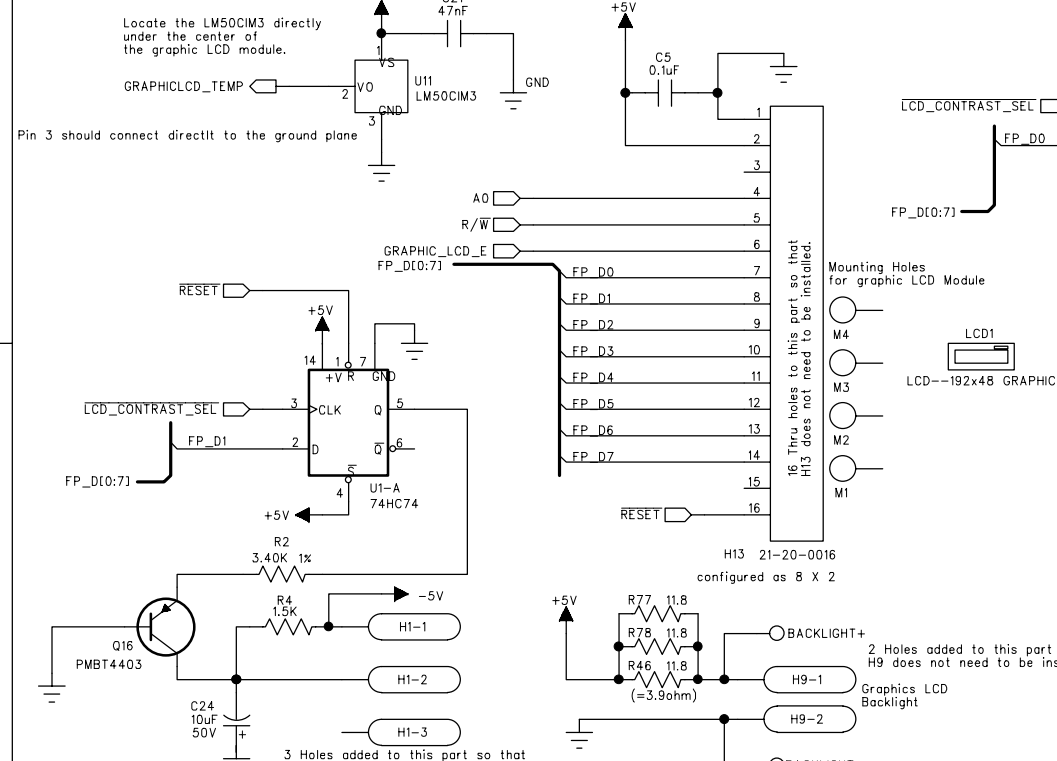
Note: This +5VA is not the same as the +5VA on the main PCB. It is only to power the pots and A/D converter on this board



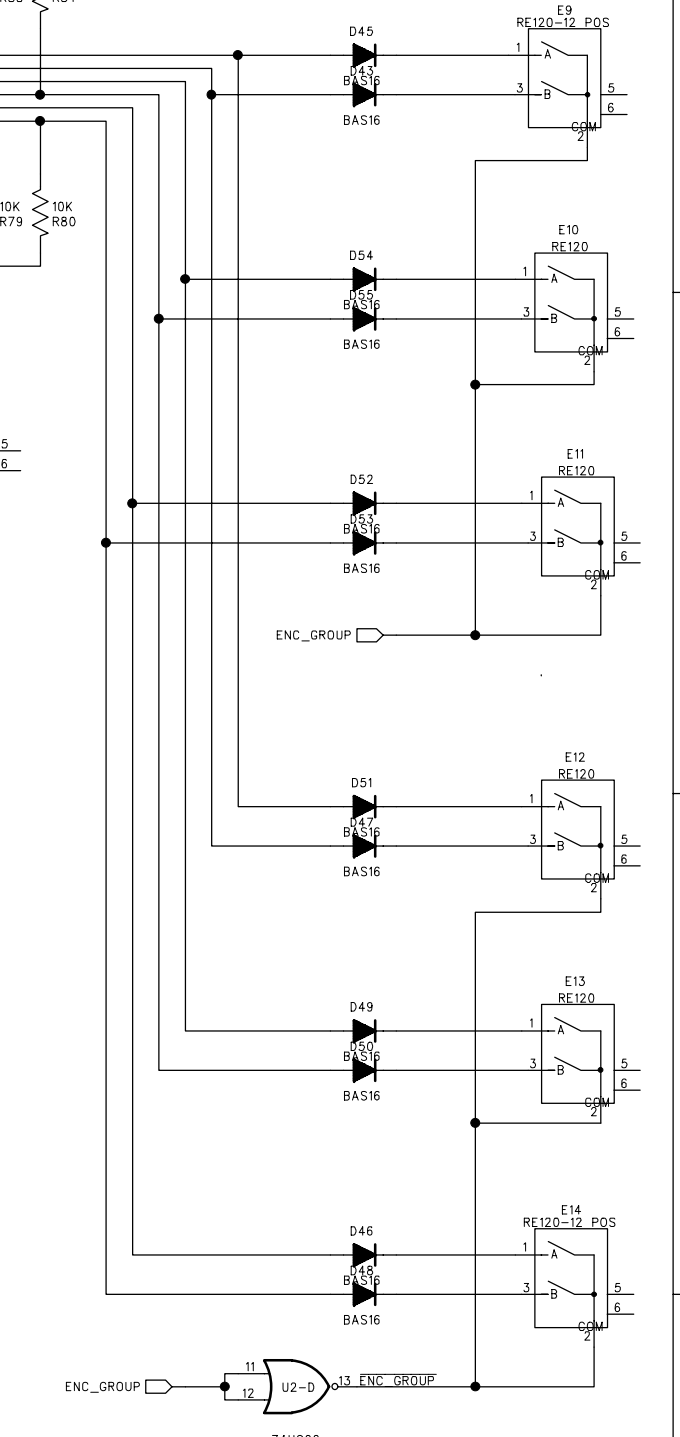
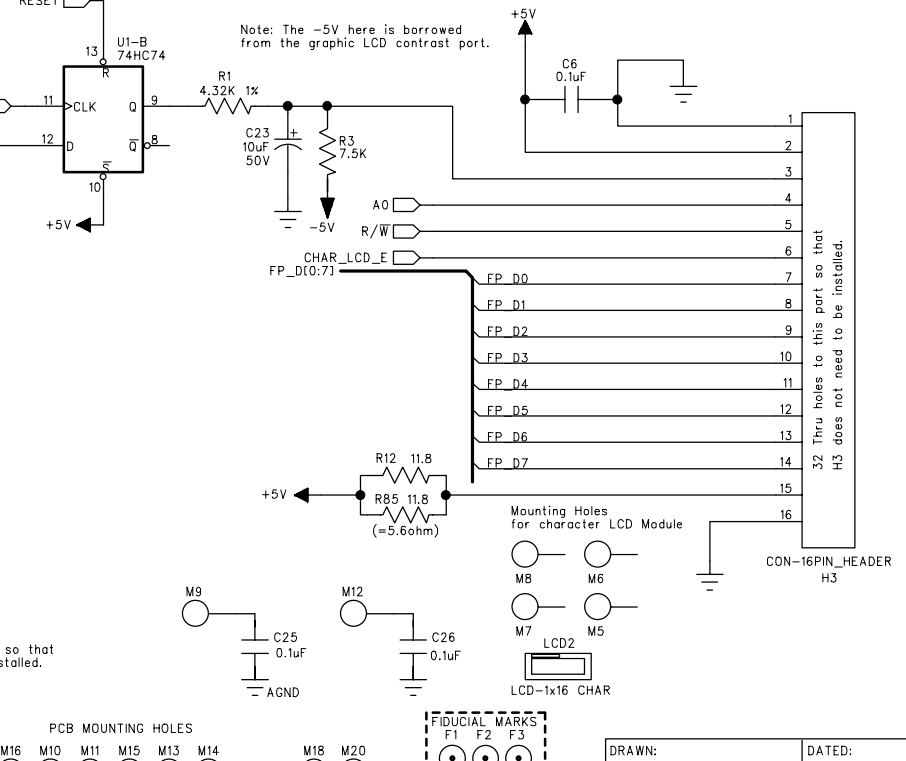
ECOs INCLUDED ON THIS SCHEMATIC/PCB REVISION		
ECO NO:	DATE:	DESCRIPTION:
0208501	3/26/02	REV C MODIFIES PASS THRU HEADERS

REV A SAME AS REV X3
REV B INCORPORATES ECO 0127002 PLUS ALSO CHANGES TO 0805 PACKAGES FROM 1206 db 10/24/01

GRAPHIC LCD INTERFACE

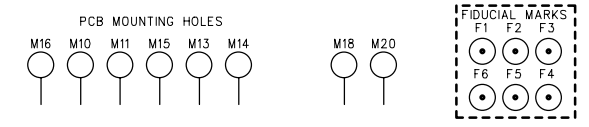


CHARACTER LCD INTERFACE



COMPANY:	LINE 6
TITLE:	VETTA COMBO/HEAD U.I. LEFT
PROGRAM:	PADS POWER LOGIC V4.0
FILENAME:	/AX3 Product Family/AX3 Combo/Hardware/ /Schematic/UI_BOARD/REV B/AX3 COMBO UI LEFT REV C.sch
SCALE: 1:1	SIZE: C
PART NUMBER:	35-00-0106
SHEET:	1 OF 3

NOTE: Header H9 is for graphics LCD backlight. The wire points BACKLIGHT+ and BACKLIGHT- are optional if H9 is not installed.



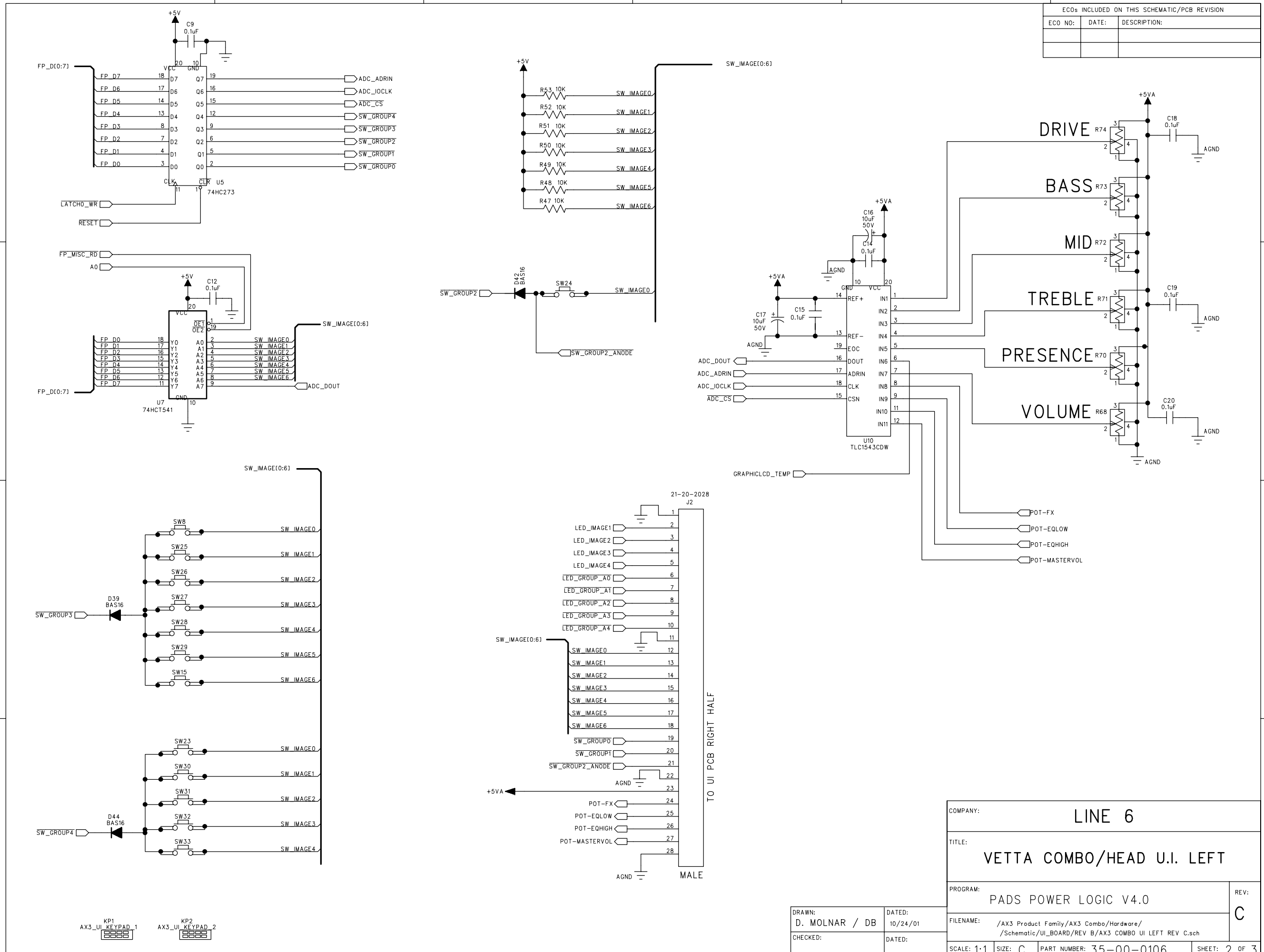
ECOs INCLUDED ON THIS SCHEMATIC/PCB REVISION		
ECO NO:	DATE:	DESCRIPTION:

D

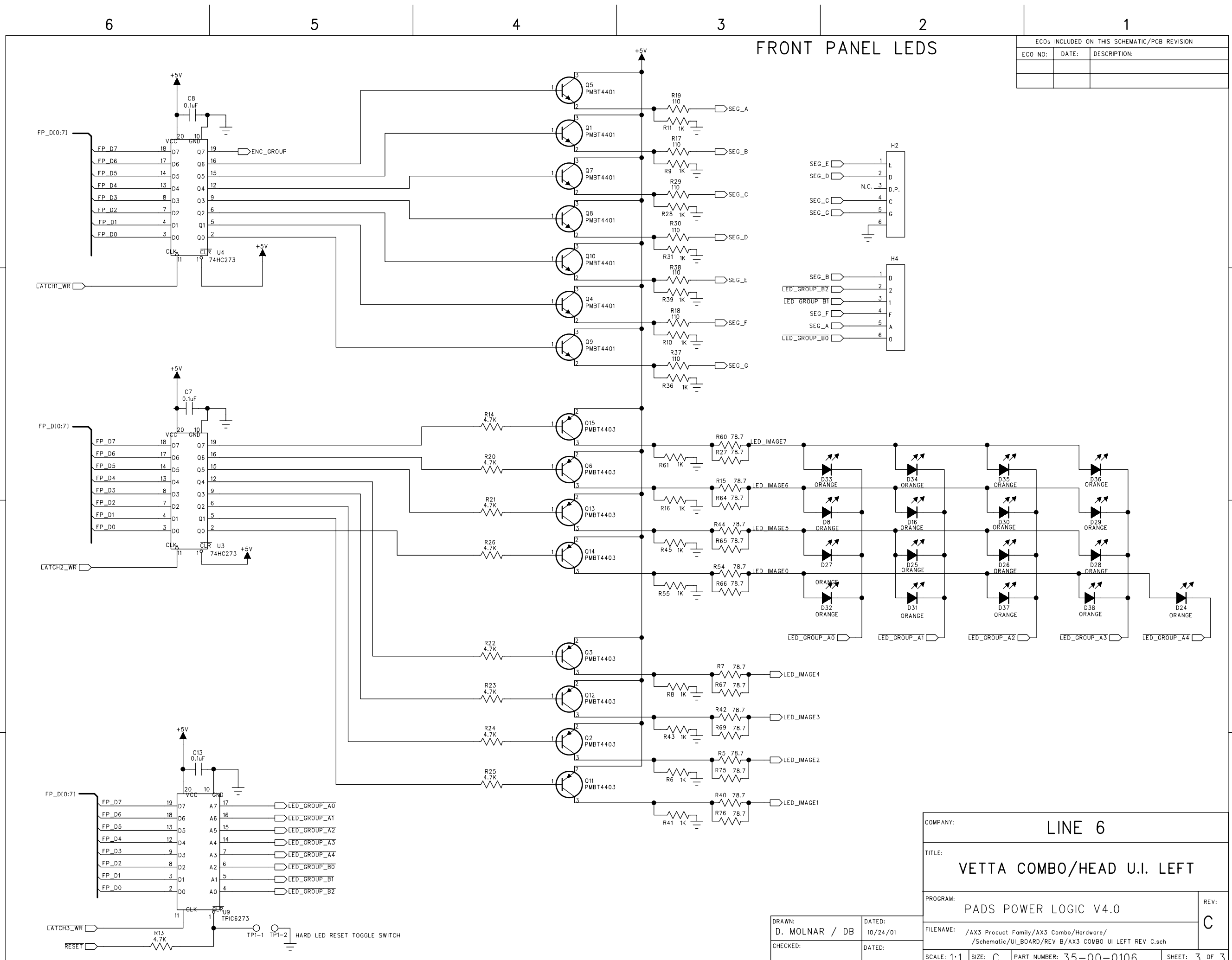
C

B

A

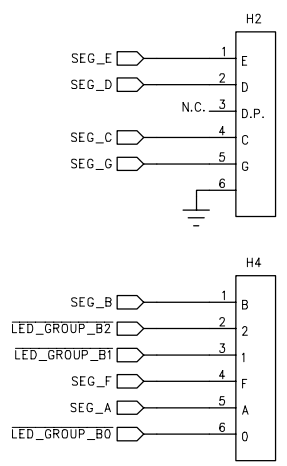


COMPANY:	LINE 6	
TITLE:	VETTA COMBO/HEAD U.I. LEFT	
PROGRAM:	PADS POWER LOGIC V4.0	REV: C
FILENAME:	/AX3 Product Family/AX3 Combo/Hardware/ /Schematic/UI_BOARD/REV B/AX3 COMBO UI LEFT REV C.sch	
SCALE: 1:1	SIZE: C	PART NUMBER: 35-00-0106
DRAWN: D. MOLNAR / DB		DATED: 10/24/01
CHECKED:		DATED:
SHEET: 2 OF 3		



ECOs INCLUDED ON THIS SCHEMATIC/PCB REVISION		
ECO NO:	DATE:	DESCRIPTION:

FRONT PANEL LEDs



COMPANY:		LINE 6	
TITLE:		VETTA COMBO/HEAD U.I. LEFT	
PROGRAM:		PADS POWER LOGIC V4.0	
DRAWN:		DATED:	
D. MOLNAR / DB		10/24/01	
CHECKED:		DATED:	
SCALE: 1:1	SIZE: C	PART NUMBER: 35-00-0106	SHEET: 3 OF 3

D

C

B

A

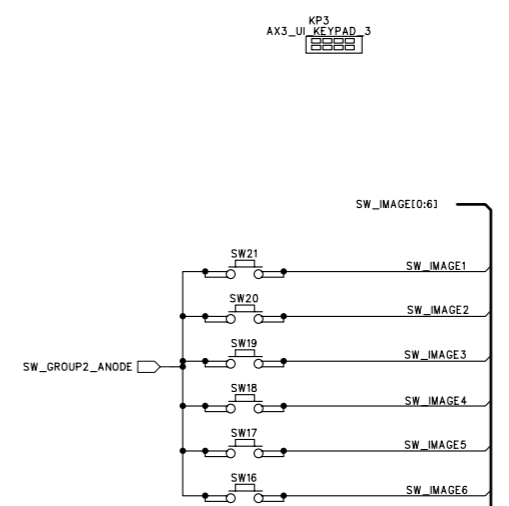
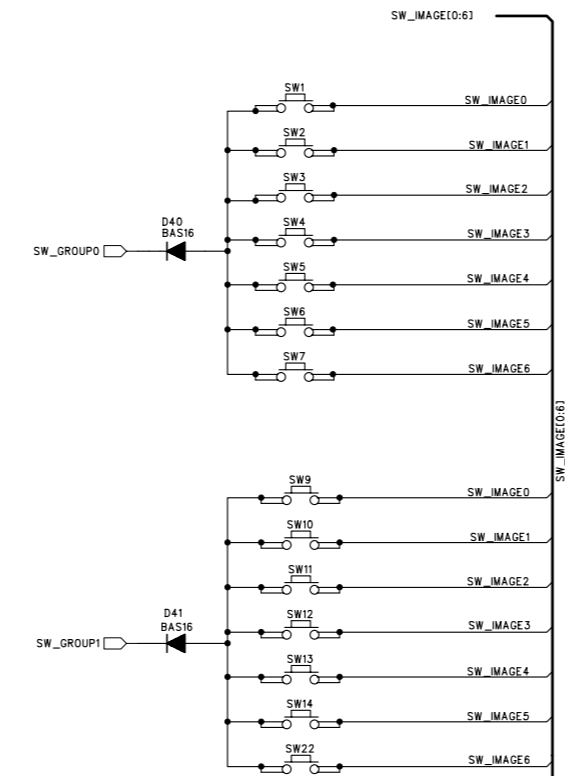
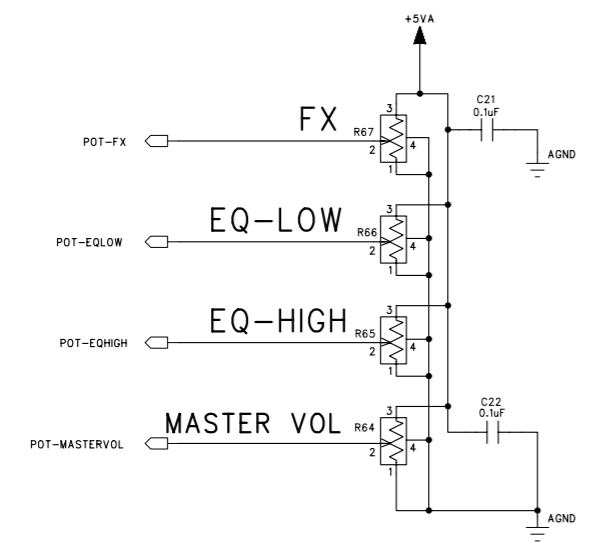
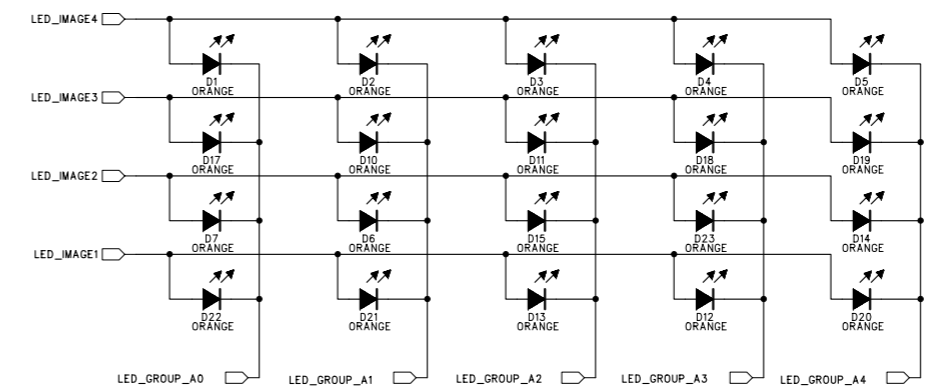
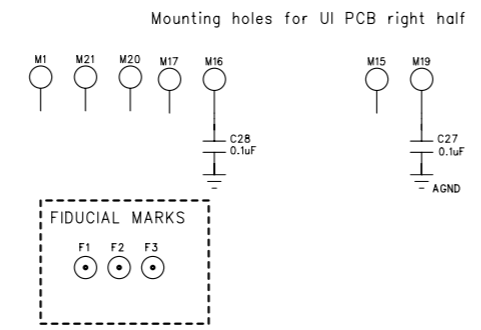
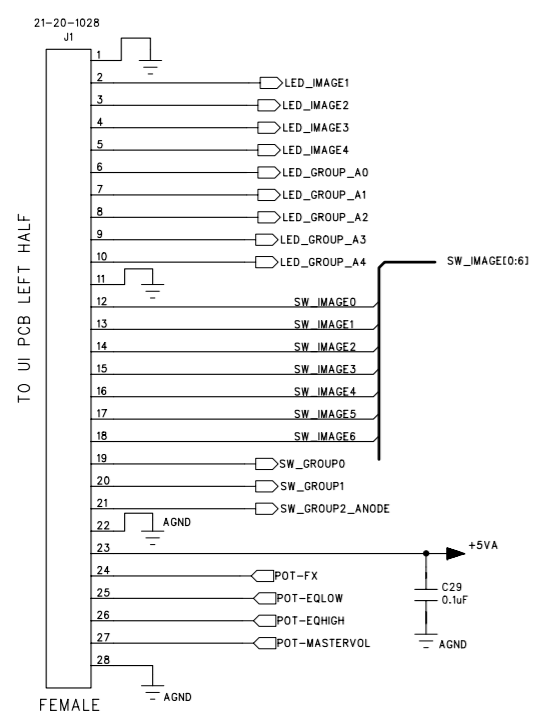
D

C

B

A

ECOs INCLUDED ON THIS SCHEMATIC/PCB REVISION		
ECO NO:	DATE:	DESCRIPTION:



COMPANY:	LINE 6	
TITLE:	AX3 COMBO/HEAD U.I. RIGHT HALF	
PROGRAM:	PADS POWER LOGIC V3.5.1	REV: A
FILENAME:	G:/CLIENTS/FFD/AX3 Product Family/AX3 Combo/Hardware/Schematic/UI_BOARD/REV A/AX3_COMBO_UI_RIGHT_REV_A.sch	
SCALE: 1:1	SIZE: C	PART NUMBER: 35-00-0107
DRAWN: D. Molnar		DATED: 05/21/2001
CHECKED:		DATED:
SHEET: 1		OF 2

6

5

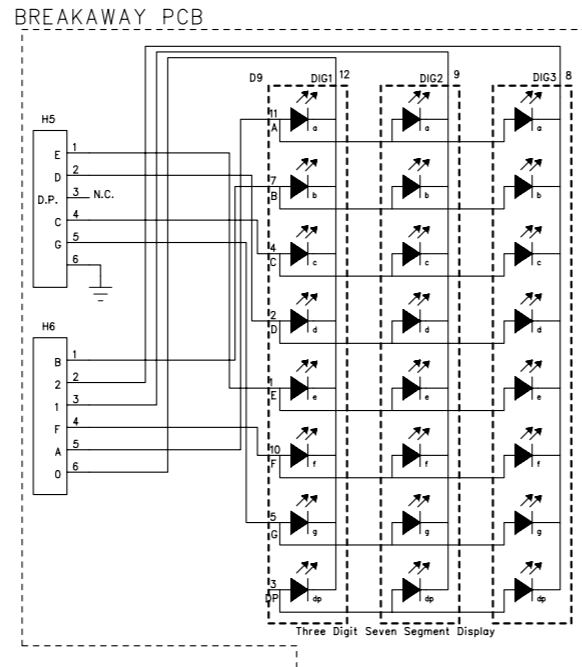
4

3

2

1

ECOs INCLUDED ON THIS SCHEMATIC/PCB REVISION		
ECO NO:	DATE:	DESCRIPTION:

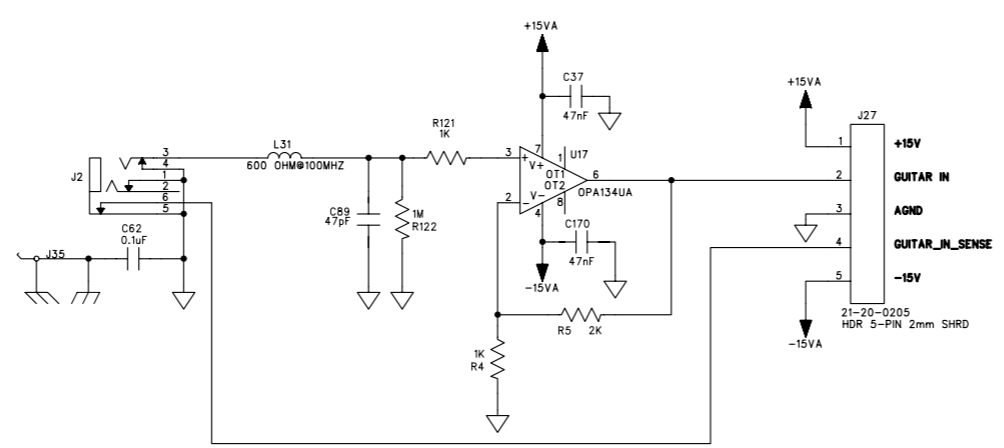


COMPANY:	LINE 6		
TITLE:	AX3 COMBO/HEAD U.I. RIGHT HALF		
PROGRAM:	PADS POWER LOGIC V3.5.1	REV:	A
DRAWN:	D. Molnar	DATED:	5/21/2001
CHECKED:		DATED:	
FILENAME:	G:/CLIENTS/FFD/AX3 Product Family/AX3 Combo/Hardware/Schematic/UI_BOARD/REV A/AX3_COMBO_UI_RIGHT_REV_A.sch		
SCALE:	1:1	SIZE:	C
PART NUMBER:	35-00-0107		SHEET: 2 OF 2

6 5 4 3 2 1

ECOs INCLUDED ON THIS SCHEMATIC/PCB REVISION		
ECO NO:	DATE:	DESCRIPTION:

GUITAR INPUT PCB



COMPANY:		LINE 6	
TITLE:			
AX3 GUITAR INPUT PCB			
PROGRAM:		PADS POWER LOGIC V3.5	
DRAWN:		DATED:	
D. Molnar		5/22/01	
CHECKED:		DATED:	
Initials		Date	
SCALE: 1:1	SIZE: C	PART NUMBER: 35-00-0099	SHEET: 1 OF 1

REV: A

D

D

C

C

B

B

A

A

LINE 6
Vetta HD Parts List

Items: 99 VETTA HD US

Level	Seq	Component-Item	Component-Description	Qty-Per-Parent
=====				
Parent Item: 99 VETTA HD US AMP Vetta Head 120V US				
1		21-30-0009-2	CAB DIL 10 PIN .100 PITCH	1.000000
1		21-30-0026	CAB DIL RBN 26 PIN 8.0	1.000000
1		21-34-0006	CAB SIL 2 PIN 1.95" .156" PITCH	1.000000
1		21-34-0007-2	CAB ASSY SIL 4 PIN 2mm X 12.0 IN 26 AWG RED F-F	1.000000
1		21-34-0008-2	CAB SIL 4 PINS .156 IN PITCH 10.0 IN LG	1.000000
1		21-34-0014-2	CAB SIL 8 PINS .156 IN PITCH 13.0 IN LG	1.000000
1		21-34-0015	CAB SIL 5 PIN .079 IN PITCH 5.4 IN LG	1.000000
1		21-34-0018	CAB SIL 2 PIN .295 IN PITCH	1.000000
1		21-34-0021-2	CAB SIL 6 PINS .156 IN PITCH 12.5 IN LG	1.000000
1		21-34-1116	Cable, Earthing green with yellow strip	1.000000
1		21-37-1160	CABLE PWR UL/CSA SJT 8.2ft Blk EL-302 w/GND EL70	1.000000
1		24-06-0002	SWITCH ROCKER 2	1.000000
1		30-00-0018	SCREW 6-32 SLFTPG x.75 FLH PHILLIPS	4.000000
1		30-00-0025	SCREW 4-40 x.187 PNH	4.000000
1		30-00-0375	SCR 6-32 x .375 LG PHILLIPS PN H STL BLK OXIDE	6.000000
1		30-00-0607	SCR 6-32 x 7/16 PHIL PN HD STL w/LK WASH ZINC	38.000000

LINE 6
Vetta HD Parts List

1	30-00-1012	SCREW #10-32 X 1/2 PHILLIPS PAN ZINC	4.000000
1	30-00-1124	SCR 10-32 x 1 1/2 LG OVAL CT SK PHH STL BLK	4.000000
1	30-00-4250	SCR SHEET METAL PAN HEAD SLF TAP. 4 x.250" w/BLK OXIDE	4.000000
1	30-00-8375	SCR SHEET METAL #8 x.375" PPH SELF TAP w/BLK OXIDE	2.000000
1	30-03-0001	WASHER #10 EXTERNAL TOOTH LOCKWASHER ZINC	4.000000
1	30-03-0011	WASHER FINISHING #10 CTS K BLK OXIDE	4.000000
1	30-15-0004	SPACER .13THKx.630D NYLON MUDGE 5610-82-.125	1.000000
1	30-24-0003	TIE CABLE 4" CLEAR	6.000000
1	30-27-0025	KNOB SM ENCDR .55Dx.57 H IMP ABS MICROTEx	5.000000
1	30-27-0027	KNOB LGE ENCDR .80Dx.60 H IMP ABS MICROTEx	2.000000
1	30-27-0031	BEZEL LEFT AX3 1.5x5.8x.28 H IMP ABS BLK	1.000000
1	30-27-0032	LENS, BEZEL, MAIN 4.3x2.2 LEXAN SMOKED - VETTA	1.000000
1	30-27-0033	LENS, BEZEL, LEFT, 4.3x1.2 LEXAN SMOKED - VETTA	1.000000
1	30-27-0034	BEZEL MAIN VETTA 4.6x.28 H IMP ABS BLK	1.000000
1	30-27-0042	GROM ENCDR VETTA .50DIAx.04 NYLON WHT/SM	7.000000
1	30-40-0001	GASKET VIB DPG 1.24x1.79 AMP SEL	1.000000
1	30-40-0002	GASKET VIB DPG 2.0x5.7 EDIT SEL	1.000000
1	30-40-0003	GASKET VIB DPG CHAN SEL 1.2x5.6	1.000000
1	30-45-2000	KNOB POT PLASTIC BLACK w/WHITE INDICATOR LINE	10.000000

LINE 6
Vetta HD Parts List

1	30-51-0040	EXP SLOT COV 7.7x2.2 20 GA STL BLK PWD COAT	1.000000
1	30-51-0076	COV CHAS VETTA HD 27.3x7.8 EG STL ELEC GALV	1.000000
1	30-51-0093	CLIP MAIN BEZEL .52x.26 EG STL	2.000000
1	30-51-0095	CHASSIS BRACE 7.7x6.7 EG STEEL	2.000000
1	30-51-0096	Ref: added per EO# 0133806 CLIP WIRE SMALL BEZEL .364x.256x.150 SPR TEM CS WIRE	1.000000
1	30-51-0102	PUSH RETAINER .45X.250	1.000000
1	30-75-0010	PEDAL SWITCH RUBBER PAD	1.000000
1	40-00-0000	CHART PATCH VETTA	1.000000
1	40-00-0001	MANUAL USERS VETTA	1.000000
1	40-00-0073	SHEET ACCESSORY DOMESTIC	1.000000
1	40-10-0001	Foam, Corner Lam. PE 6.25*6.25*6.25 1.75 thk	8.000000
1	40-10-0018	CARTON SHIPPING VETTA HD	1.000000
1	40-16-0003	BROCHURE HANGING VETTA	1.000000
1	40-20-0010	BAG PLASTIC 43"x38"x.004 CLEAR	1.000000
1	40-20-0011	BAG PLASTIC 10 x 16 2 mil	1.000000
1	40-25-0008	LABEL ETL AX3/HDII LINE6 2"x1"	1.000000
1	40-25-0015	LABEL GROUND SYMBOL	1.000000
1	40-25-0020	LABEL INSPECTION QUALITY	2.000000
1	40-25-0100	LABEL BAR CODE SERIAL NUMBER 4-PANEL LABEL	1.000000

LINE 6
Vetta HD Parts List

=====			
1	40-25-0103	STICKER VERSION 1.1 VETTA	1.000000
1	40-25-0150	Sticker, Vetta Disclaimer	1.000000
1	40-25-0254	LABEL LOGO LINE 6 PREMIUM	1.000000
1	40-25-2000	STICKER OUTPUT AX3 REV-A	1.000000
1	50-00-0039	ASSY KEYCAPS AMP SEL VETTA	1.000000
1	50-00-0042	ASSY KEYCAPS CHAN SEL VETTA	1.000000
1	50-00-0043	ASSY KEYCAPS EDIT SEL VETTA	1.000000
1	50-00-0099	PCBA INPUT GUITAR VETTA	1.000000
2	01-00-0102	RES 1K 5% 0805	2.000000
2	01-00-0105	Ref: r4,R121 RES 1M 5% 0805	1.000000
2	01-00-0202	Ref: R122 RES 2K 5% 0805	1.000000
2	03-46-0104	Ref: r5 CAP X7R 0.1uF 50V 20% 1206	1.000000
2	03-50-0470	Ref: C62 CAP NPO 47pF 50V 10% 0805	1.000000
2	03-52-0473	Ref: C89 CAP X7R 47nF 50V 20% 0805	2.000000
2	11-10-0601	Ref: C37,C170 FERRITE BEAD 600R @100MHZ 1206	1.000000
2	12-54-0134 SO-8	Ref: L31 IC OP AMP - OPA134UA SM	1.000000
2	21-00-6617 HORIZ TH	Ref: U17 JACK 1/4" TRS 6-PIN PCB MT W/CHROME HRDWARE	1.000000
		Ref: J2	

LINE 6
Vetta HD Parts List

2	21-20-0205	HDR PCB MT SIL 5-PIN x 2mm FEMALE SHRD VERT MT TH	1.000000
2	30-18-3030	Ref: J27 CLIP GND PCB .30x.30x.07	1.000000
		Ref: J35	
1	50-00-0104	PCBA OUTPUT SPEAKER	1.000000
2	03-50-0102	CAP NPO 1nF 50V 5% 0805	4.000000
2	21-00-6616	Ref: C47,C53-54,C63 JACK 1/4" TRS 6-PIN PCB MT HORIZ TH	4.000000
2	21-20-0204	Ref: J16,J18,J28,J30 HDR PCB MT SIL 4-PIN x 2mm FEMALE SHRD VERT MT TH	1.000000
2	21-20-1564	Ref: H3 HDR PCB MT SIL 4-PIN X .156 MALE VERT-MNT FRIC-LOCK	1.000000
2	24-09-0128	Ref: J8 SWITCH SLIDE DPDT RA PCB MT ON-OPEN-ON SWEETA SPA-128	1.000000
2	30-18-3030	Ref: SW1 CLIP GND PCB .30x.30x.07	4.000000
		Ref: J42-J45	
1	50-00-0106	PCBA INTERFACE USER LEFT VETTA	1.000000
2	01-00-0102	RES 1K 5% 0805	15.000000
2	01-00-0103	Ref: R6,R8-11,R16,R28,R31,R36,R39,R41,R43,R45,R55,R61 RES 10K 5% 0805	23.000000
2	01-00-0152	Ref: R32-35,R47-53,R56-59,R62-63,R79-84 RES 1.5K 5% 0805	1.000000
		Ref: R4	

LINE 6
Vetta HD Parts List

2	01-00-0472	RES 4.7K 5% 0805	9.000000
2	01-00-0752	Ref: R13-14,R20-26 RES 7.5K 5% 0805	1.000000
2	01-24-1100	Ref: R3 RES 110R 1% 0805	7.000000
2	01-24-11R8	Ref: R17-19,R29-30,R37-38 RES 11.8R 1% 0805	5.000000
2	01-24-3401	Ref: R12,R46,R77-78,R85 RES 3.40K 1% 0805	1.000000
2	01-24-4321	Ref: R2 RES 4.32K 1% 0805	1.000000
2	01-24-78R7	Ref: R1 RES 78.7R 1% 0805	16.000000
2	01-48-0103	Ref: R5,R7,R15,R27,R40,R42,R44,R54,R60,R64-67,R69,R75-76 POT MONO 10KB LINEAR TAPER 25 mm D-SHAFT	6.000000
2	03-18-0106	Ref: R68,R70-74 CAP ELEC 10uF 50V 20% RADIAL 5/11/5	6.000000
2	03-52-0103	Ref: C1-2,C16-17,C23-24 CAP X7R 10nF 50V 20% 0805	2.000000
2	03-52-0104	Ref: C3-4 CAP X7R 0.1uF 50V 20% 0805	16.000000
2	03-52-0473	Ref: C5-15,C18-20,C25-26 CAP X7R 47nF 50V 20% 0805	1.000000
2	06-34-0016	Ref: C21 DIODE SWITCHING 75V 200mA 6nS SOT-23 SM BAS16LT1	15.000000
2	09-10-4401	Ref: D39,D42-55 TRANS NPN SMALL-SIGNAL MBT4401 SOT-23 SM	7.000000
2	09-10-4403	Ref: Q1,Q4-5,Q7-10 TRANS PNP SMALL-SIGNAL MBT4403 SOT-23 SM	9.000000
		Ref: Q2-3,Q6,Q11-16	

LINE 6
Vetta HD Parts List

2	12-64-1543	IC ADC 10 BIT 11 CHANNEL SM TLC1543CDW	1.000000
		Ref: U10	
2	12-72-0050	IC PRECISION TEMPERATURE SENSOR SOT-23 SM LM50CIM3	1.000000
		Ref: U11	
2	15-62-0002	IC 74HC02 QUAD 2-INPUT NOR SO-14 SM	1.000000
		Ref: U2	
2	15-62-0074	IC 74HC74 FLIP-FLOP DUAL D-TYPE 2-IN SO-14 SM	1.000000
		Ref: U1	
2	15-62-0138	IC 74HC138 DECODER/DEMUX 3-8 LINE SO-16 SM	1.000000
		Ref: U8	
2	15-62-0273	IC 74HC273 FLIP-FLOP D-TYPE 8-BIT SO-20 SM	3.000000
		Ref: U3-5	
2	15-64-0541	IC 74HCT 541 OCTAL BUF/DRIVER 3-S 8 SM	2.000000
		Ref: U6-7	
2	18-21-0002	LED ORANGE 3mmX2mm SM Kingbrite APK3020SEC	17.000000
		Ref: D8,D16,D24-38	
2	21-20-1302	HDR PCB MT DIL 26-PIN 2X13-100 VERT MT TH	1.000000
		Ref: h12	
2	21-20-2006	HDR PCB MT SIL 6-PIN 1x6x.100 MALE VRT-MNT TH	2.000000
		Ref: H2,H4	
2	21-20-2028	HDR PCB MT DIL 28-PIN 2x14x100 MALE RT ANG TH	1.000000
		Ref: J2	
2	24-12-0120	ENCODER ROTARY VERT MT 24 STEP INCR 20mmSH/F TH RE120-40	5.000000
		Ref: E8,E10-13	
2	24-12-1120	ENCODER 12-STEP ALPHA RE120-40-20F-12P TH	2.000000
		Ref: E9,E14	
2	30-12-0001	STANDOFF .343 (.710 LG) PLASTIC	4.000000
2	30-12-0002	STANDOFF .470 LG PLASTIC	4.000000