

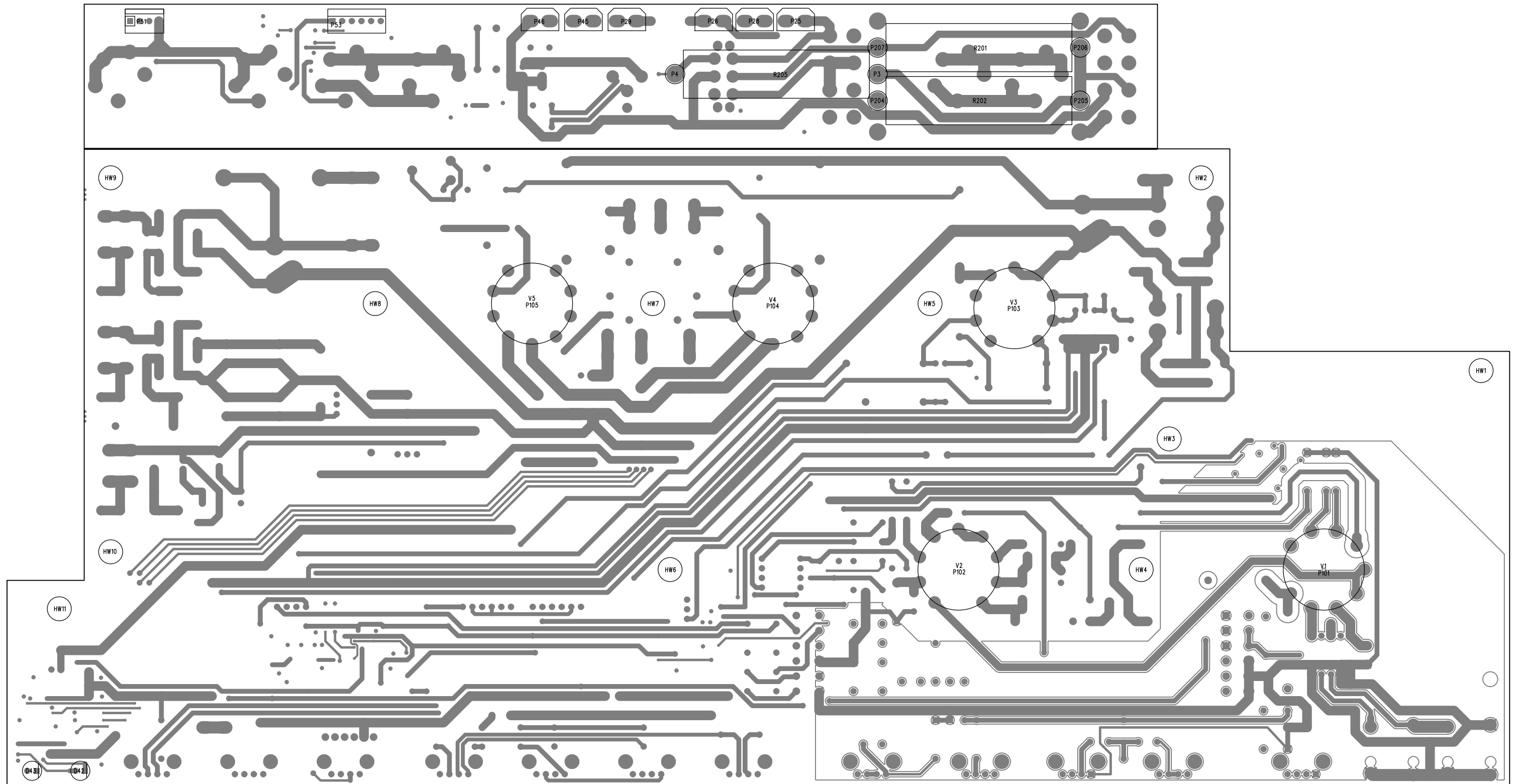
REAR
BREAK-OFF
PCB

S3 = Impedance
S6 = Attenuator
S7 = Output Mute



VALVEKING 2-20

VALVEKING 2 20W MAIN - SECONDARY SIDE VIEW



BILL OF MATERIAL REPORT

REPORT DATE/TIME: 12/17/2013 4:54:52 PM

BOARD NAME: ValveKing 2 20 Watt Main ASSEMBLY LEVEL NUMBER: 32204002

PROJECT NUMBER: P1200015 DESIGNER: FJE - 32102080

| Qty. | Part # | Description | Reference Designators |
|------|----------|--------------------------|--|
| 1 | 30200012 | 47 1/4W 5% MF 1206 | R83 |
| 6 | 30200025 | 4.7K 1/4W 5% MF 1206 | R155 R156 R157 R158 R159 R160 |
| 2 | 30200128 | 1.50K 1/4W 1% MF 1206 | R20 R45 |
| 1 | 30200136 | 392 1/4W 1% MF 1206 | R11 |
| 8 | 30200174 | 10K 1/10W 1% MF 0805 | R96 R97 R124 R125 R141 R142 R143 R144 |
| 1 | 30200179 | 51.1 1/10W 1% MF 0805 | R56 |
| 1 | 30200181 | 100 1/10W 1% MF 0805 | R116 |
| 3 | 30200188 | 1.00K 1/10W 1% MF 0805 | R57 R99 R100 |
| 12 | 30200194 | 100K 1/10W 1% MF 0805 | R32 R43 R44 R46 R47 R50 R53 R54 R82 R117 R135 R136 |
| 11 | 30200195 | 1.00M 1/10W 1% MF 0805 | R23 R31 R48 R69 R70 R75 R137 R138 R164 R165 R166 |
| 1 | 30200202 | 3.32K 1/10W 1% MF 0805 | R58 |
| 2 | 30200205 | 47.5K 1/10W 1% MF 0805 | R130 R132 |
| 3 | 30200251 | 4.75K 1/10W 1% MF 0805 | R9 R10 R27 |
| 5 | 30200256 | 22.1K 1/10W 1% MF 0805 | R25 R79 R80 R81 R84 |
| 2 | 30200339 | 10.0M 1/10W 1% MF 0805 | R63 R64 |
| 4 | 30200417 | 464K 1/10W 1% MF 0805 | R1 R49 R68 R167 |
| 2 | 30200418 | 1 1W 1% MF 2512 | R24 R26 |
| 1 | 30200443 | 2.2M 1/10W 5% 0805 | R112 |

| | | | | | | |
|---|----------|-------|-------|----|---------|---------------------------------|
| 1 | 30200491 | 681 | 1/10W | 1% | 0805 | R62 |
| 2 | 30200630 | 681K | 1/10W | 1% | MF 0805 | R129 R131 |
| 2 | 30210003 | 100 | 1W | 5% | MO AXL | R18 R19 |
| 2 | 30210005 | 22K | 1W | 5% | MO AXL | R55 R169 |
| 1 | 30210011 | 47 | 1W | 5% | MO AXL | R88 |
| 1 | 30210015 | 4.7 | 1W | 5% | MO AXL | R122 |
| 6 | 30210017 | 100K | 1W | 5% | MO AXL | R60 R109 R110 R111 R149 R150 |
| 2 | 30210018 | 10K | 1W | 5% | MO AXL | R15 R30 |
| 1 | 30210024 | 1.2K | 1W | 5% | MO AXL | R85 |
| 1 | 30210025 | 2.2 | 1W | 5% | MO AXL | R107 |
| 3 | 30210123 | 150K | 1W | 5% | MO AXL | R89 R90 R91 |
| 1 | 30240012 | 180 | 1/4W | 5% | CF AXL | R38 |
| 5 | 30240018 | 1500 | 1/4W | 5% | CF AXL | R33 R34 R35 R36 R37 |
| 2 | 30240019 | 820 | 1/4W | 5% | CF AXL | R77 R78 |
| 1 | 30240020 | 2200 | 1/4W | 5% | CF AXL | R108 |
| 1 | 30240026 | 56K | 1/4W | 5% | CF AXL | R29 |
| 2 | 30240029 | 22K | 1/4W | 5% | CF AXL | R21 R61 |
| 4 | 30240031 | 47K | 1/4W | 5% | CF AXL | R39 R40 R92 R93 |
| 2 | 30240033 | 82K | 1/4W | 5% | CF AXL | R22 R102 |
| 1 | 30240035 | 150K | 1/4W | 5% | CF AXL | R101 |
| 8 | 30240036 | 220K | 1/4W | 5% | CF AXL | R3 R4 R5 R6 R7 R8 R42 R94 |
| 2 | 30240040 | 2.2M | 1/4W | 5% | CF AXL | R16 R17 |
| 2 | 30240064 | 3.9M | 1/4W | 5% | CF AXL | R59 R95 |
| 1 | 30240065 | 680K | 1/4W | 5% | CF AXL | R87 |
| 1 | 30240145 | 2.21K | 1/4W | 1% | MF AXL | R67 |
| 1 | 30240151 | 100K | 1/4W | 1% | MF AXL | R28 |
| 3 | 30241050 | 10K | 1/4W | 1% | MF AXL | R2 R98 R113 |
| 4 | 30241118 | 1M | 1/4W | 1% | MF AXL | R103 R104 R105 R106 |

| | | | |
|----|----------|----------------------------|---|
| 3 | 30241119 | 464K 1/4W 1% MF T&R | R12 R13 R14 |
| 1 | 30250020 | 390 5W 5% FP AXLH | R86 |
| 2 | 30250060 | 1K 5W 10% WW AXLH SL | R118 R120 |
| 2 | 30250299 | 4.7 15W 10% WW AXLH | R202 R203 |
| 3 | 30250301 | 10 15W 10% WW AXLH | R201 R204 R205 |
| 2 | 30250305 | 0.17A PTC (RESET) FUSE SMT | F104 F105 |
| 1 | 30300079 | 47UF 35V 20% EL SMT6 | C9 |
| 1 | 30300083 | 100UF 16V 20% EL SMT6 | C20 |
| 2 | 30300093 | 0.1UF 50V 10% X7R 0805 | C58 C94 |
| 1 | 30300099 | 22UF 50V 20% EL SMT6 | C93 |
| 17 | 30300121 | 0.1UF 50V 5% X7R 0805 | C11 C12 C13 C14 C15 C16 C17 C18 C19 C29 C31 C32 C76 C89 C90 C91 C92 |
| 1 | 30300131 | 10UF 35V 20% EL SMT4 | C77 |
| 6 | 30300148 | 0.022UF 50V 5% X7R 0805 | C28 C30 C35 C39 C84 C85 |
| 1 | 30300154 | 0.015UF 50V 10% X7R 0805 | C81 |
| 1 | 30300171 | 0.047UF 50V 5% X7R 0805 | C38 |
| 1 | 30300249 | 0.1UF 100V 20% X7R 0805 | C87 |
| 3 | 30320099 | 0.01UF 1000V 80-20% Z5U | C61 C62 C63 |
| 3 | 30320105 | 0.047UF 400V 10% PES AXL | C6 C7 C8 |
| 3 | 30320181 | 22UF 50V 20% EL RAD | C3 C4 C5 |
| 3 | 30320184 | 2.2UF 50V 20% ELN RAD | C52 C201 C202 |
| 5 | 30320186 | 1000UF 35V 20% EL RAD | C53 C54 C55 C56 C57 |
| 1 | 30320269 | 100PF 100V 5% NPO RAD | C36 |
| 1 | 30320281 | 1000PF 630V 10% PE AXL | C50 |
| 1 | 30320283 | 0.022UF 400V 10% PE AXL | C1 |
| 4 | 30320334 | 0.1UF 250V 10% PE AXL | C41 C42 C43 C44 |
| 1 | 30320569 | 470PF 400V 20% PP RADH | C22 |

| | | | |
|----|----------|--------------------------------|---|
| 2 | 30320573 | 100UF 550V 20% EL SNPH | C24 C26 |
| 1 | 30320623 | 47UF 63V 20% EL RAD | C49 |
| 1 | 30320624 | 100UF 100V 20% EL RAD | C73 |
| 1 | 30320667 | 1000PF 1000V 10% CER RAD | C78 |
| 4 | 30320676 | 10UF 450V 20% EL RADIAL | C45 C46 C47 C48 |
| 1 | 30330113 | 0.1UF 100V 10% PPS RAD | C27 |
| 1 | 30330115 | 0.033UF 50V 5% PE RAD | C79 |
| 1 | 30330118 | 470PF 50V 5% PE RAD | C64 |
| 1 | 30330128 | 0.22UF 50V 5% PE RAD | C23 |
| 1 | 30330129 | 0.1UF 50V 5% PE RAD | C60 |
| 2 | 30330134 | 0.022UF 50V 5% PE RAD | C2 C75 |
| 1 | 30330136 | 0.047UF 50V 5% PE RAD | C40 |
| 2 | 30330156 | 1000PF 50V 5% PE RAD | C65 C66 |
| 1 | 30330159 | 0.47UF 63V 5% PES RAD | C51 |
| 1 | 30340004 | 2200PF 50V 10% X7R AXL | C72 |
| 1 | 30340052 | 39PF 50V 5% NPO AXL | C37 |
| 3 | 30340057 | 270PF 50V 10% NPO AXL | C67 C69 C70 |
| 1 | 30340101 | 0.1UF 50V 10% X7R AXL | C21 |
| 1 | 30400318 | 7815F +15V INS TO-220F HOR | U6 |
| 1 | 30400322 | 7805F +5V INSUL TO-220F | U3 |
| 2 | 30402873 | SR2873 2KV, 250MA DIODE | D26 D27 |
| 1 | 30409209 | DIGITAL REVERB MODULE BTDR-2VM | U2 |
| 1 | 30418015 | LM358 DUAL OPAMP SMT | U4 |
| 7 | 30418135 | 2N3904 NPN SOT23 | Q1 Q11 Q12 Q13 Q14 Q17 Q18 |
| 1 | 30418139 | J-174 P-JFET 30V SOT23 | Q9 |
| 2 | 30418140 | 6.8V ZENER (SOD123)-SMT | D30 D31 |
| 1 | 30418261 | 1N4003 - SMT - SMA PKG | D25 |
| 12 | 30418328 | 1N4148W SWITCHING DIODE | D1 D2 D3 D4 D6 D7 D10 D11 D35 D36 D37 D38 |

| | | | |
|----|----------|-------------------------------|---|
| 8 | 30418369 | 2N7002E N CH 60V MOSFET | Q7 Q8 Q21 Q22 Q23 Q24 Q25 Q26 |
| 1 | 30418389 | 5.1V ZENER (SOD123)-SMT | D13 |
| 3 | 30418421 | MMBT3906 PNP SOT23 | Q4 Q19 Q20 |
| 1 | 30418504 | 15V 1.5W ZENER SMA | D5 |
| 1 | 30418578 | 2060 QUAD OPAMP TSSOP1414 | U1 |
| 2 | 30450037 | BICOLOR LED R/G T1 | D42 D43 |
| 1 | 30450068 | RED T1 3/4 LED S-BRT BULK | D12 |
| 1 | 30460097 | MAC97-6 TRIAC TO-92 T&A | TR1 |
| 5 | 30464003 | 1N4003 200V 1A SI DIODE | D14 D15 D16 D17 D18 |
| 4 | 30464007 | 1N4007 1KV, 1A, SI DIODE | D21 D22 D23 D24 |
| 2 | 30464148 | 1N4148 75V 10MA DIODE | D28 D29 |
| 1 | 30500104 | 39MH RADIAL INDUCTOR | L2 |
| 1 | 30500105 | 120MH RADIAL INDUCTOR | L1 |
| 2 | 30600136 | 0 OHM 22GA JMPR AXL | R65 R66 |
| 2 | 30806623 | EL84/6BQ5 POWER TUBE | V4 V5 |
| 3 | 30806629 | 12AX7 LOW MICROPHONIC | V1 V2 V3 |
| 5 | 30806631 | TUBE SKT 9PIN CERAMIC | P101 P102 P103 P104 P105 |
| 6 | 30901714 | FUSE CLIP, 5 X 20MM -T&A | P35 P36 P37 P38 P39 P40 |
| 11 | 30901859 | STND .500 T4-40,SW,AL,ST | HW1 HW2 HW3 HW4 HW5 HW6 HW7 HW8 HW9 HW10 HW11 |
| 1 | 31190009 | 10K LIN.-HOR.PC MNT. TRIM POT | VR14 |
| 2 | 31190903 | 20KB SNGL 12MM HOR | VR3 VR7 |
| 1 | 31190904 | 50KB SNGL 12MM HOR | VR10 |
| 2 | 31190908 | 250KB SNGL 12MM HOR | VR4 VR8 |
| 4 | 31190910 | 1M5A SNGL 12MM HOR | VR2 VR5 VR6 VR12 |
| 2 | 31190911 | 1M15A SNGL 12MM HOR | VR1 VR9 |

| | | | |
|----|----------|---------------------------|---|
| 1 | 31191012 | 1MB SNGL 12MM HOR | VR11 |
| 1 | 31322251 | SWITCH DPDT PP 3.3MM PC V | S5 |
| 2 | 31322256 | SWITCH 2XDPDT PP 3.3 PC H | S1 S2 |
| 3 | 31322277 | RELAY 12V DPDT .5A | S11 S12 S13 |
| 2 | 31322328 | SWITCH 2P3T SLIDE PC V | S3 S6 |
| 1 | 31322476 | SWITCH 2P2T TOGGLE | S7 |
| 2 | 31466222 | JACK, MONO R/A 1/4" 6.5MM | J1 J2 |
| 1 | 31466324 | MXLR NC3MAV A-SER VERT | J7 |
| 6 | 31466542 | STEREO HID JACK INSU | J3 J4 J5 J6 J8 J9 |
| 20 | 33711818 | PIN-F .093 FOR COMP MNTG | P1 P2 P3 P4 P5 P6 P19 P27 P30 P31 P32 P33 P200 P201 P202 P203 P204 P205 P206 P207 |
| 22 | 33716194 | SPADE .250 PC MNT .093 | P0 P11 P12 P13 P14 P15 P16 P17 P18 P20 P21 P22 P23 P24 P25 P26 P28 P29 P43 P44 P45 P46 |
| 2 | 33717015 | 4 HDR V SR .100" TIN LK | P50 P51 |
| 3 | 33717123 | 6 HDR V SR .100" TIN LK | P42 P52 P53 |

 END OF BILL OF MATERIAL REPORT
