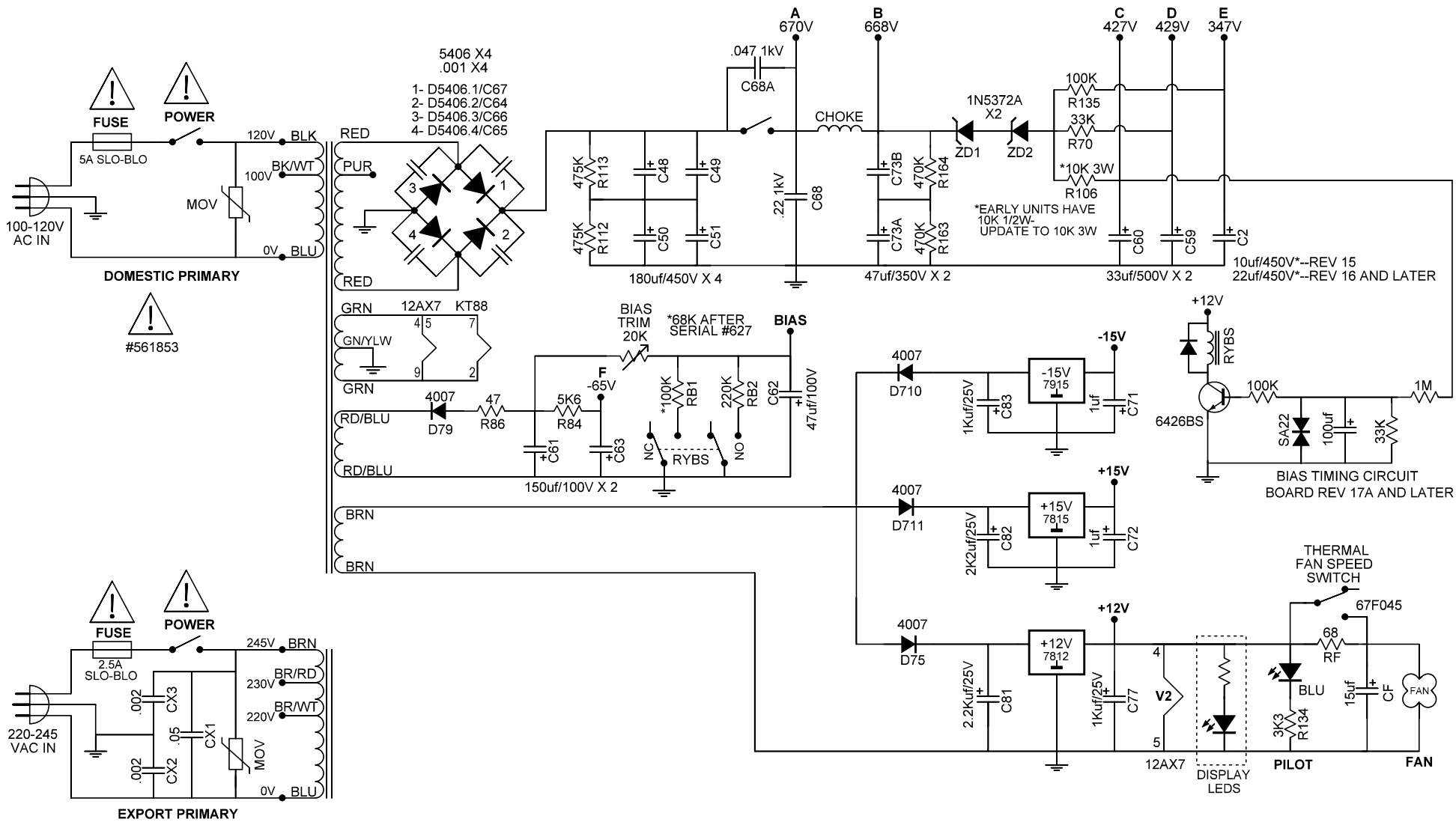


V1-V3 = 12AX7  
 V4-V7 = KT88

ALL DIODES 1N4448 UNLESS OTHERWISE NOTED  
 ALL VOLTAGES MEASURED AT 120VAC LINE IN  
 ALL OPAMPS-- PIN 8, +15V/PIN 4, -15V

Covered under one or more  
 of the following patents:  
 5,559,469; 5,793,252; 6,522,752; 6,621,907;  
 6,724,897; 7,173,488; 7,193,458; 7,412,064;  
 7,602,927

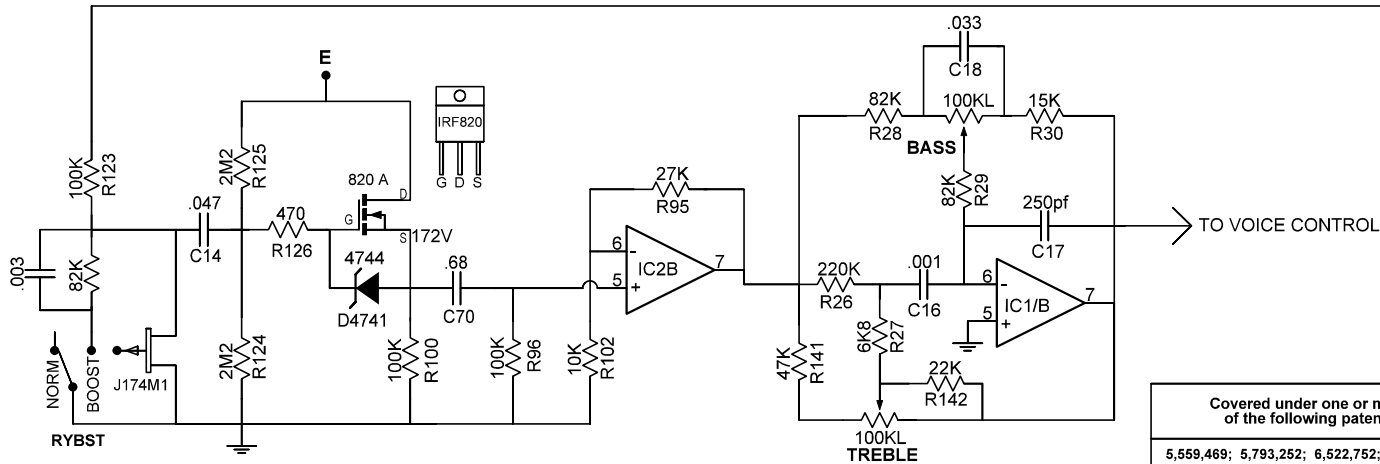
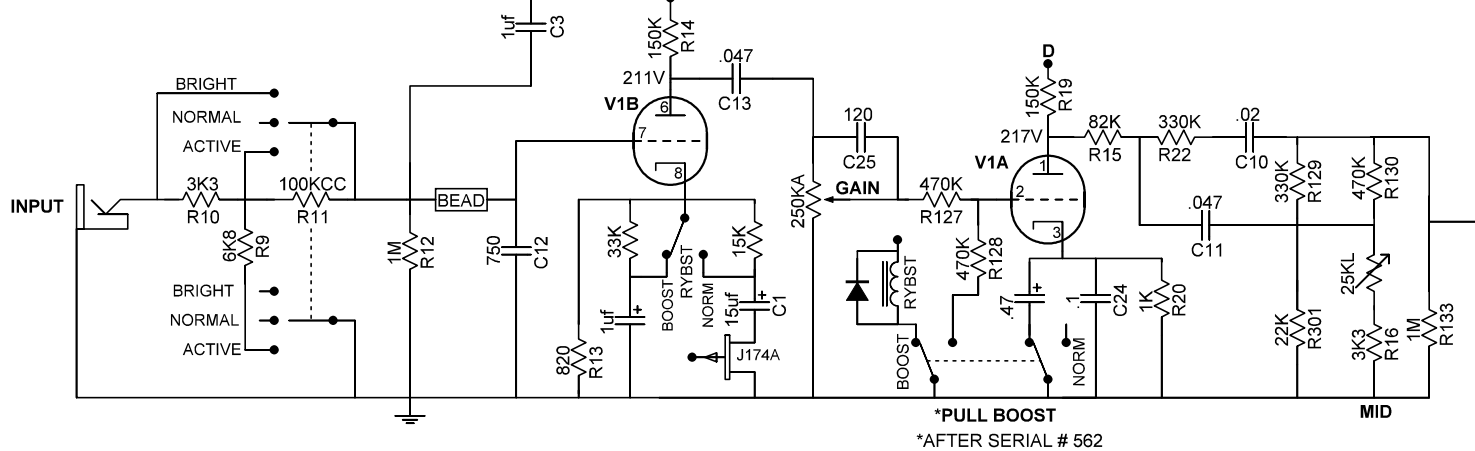
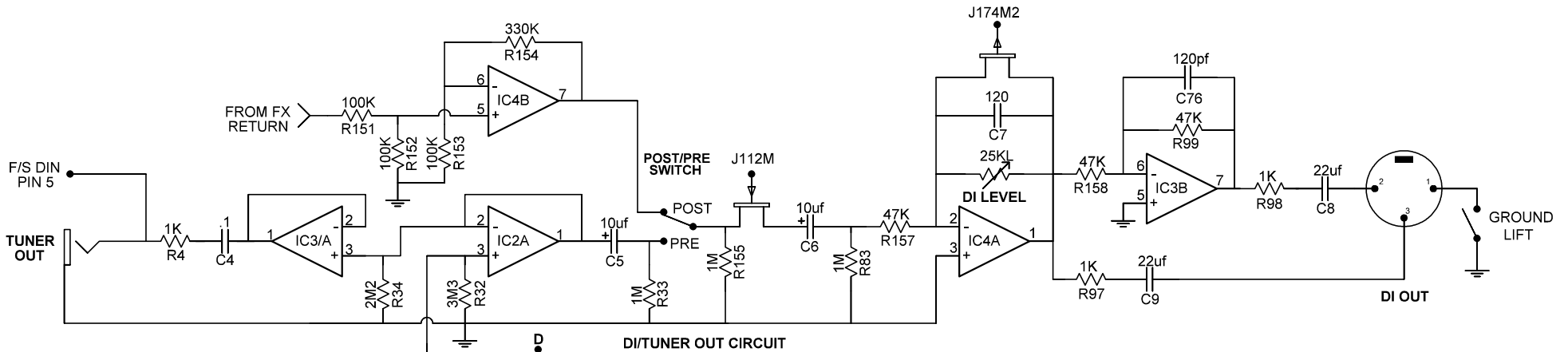
<b>MESA/BOOGIE</b>	DATE: 3-22-2016
	PAGE: 1 OF 7
	DRAWN BY: JOHN M.
	BOARD REV: PR15, 16, 17, 17A
COPYRIGHT 2014 MESA BOOGIE, LTD.	FILE NAME:



ALL DIODES 1N4448 UNLESS OTHERWISE NOTED  
 ALL VOLTAGES MEASURED AT 120VAC LINE IN  
 ALL OPAMPS-- PIN 8, +15V/PIN 4, -15V

Covered under one or more of the following patents:  
 5,559,469; 5,793,252; 6,522,752; 6,621,907;  
 6,724,897; 7,173,488; 7,193,458; 7,412,064;  
 7,602,927

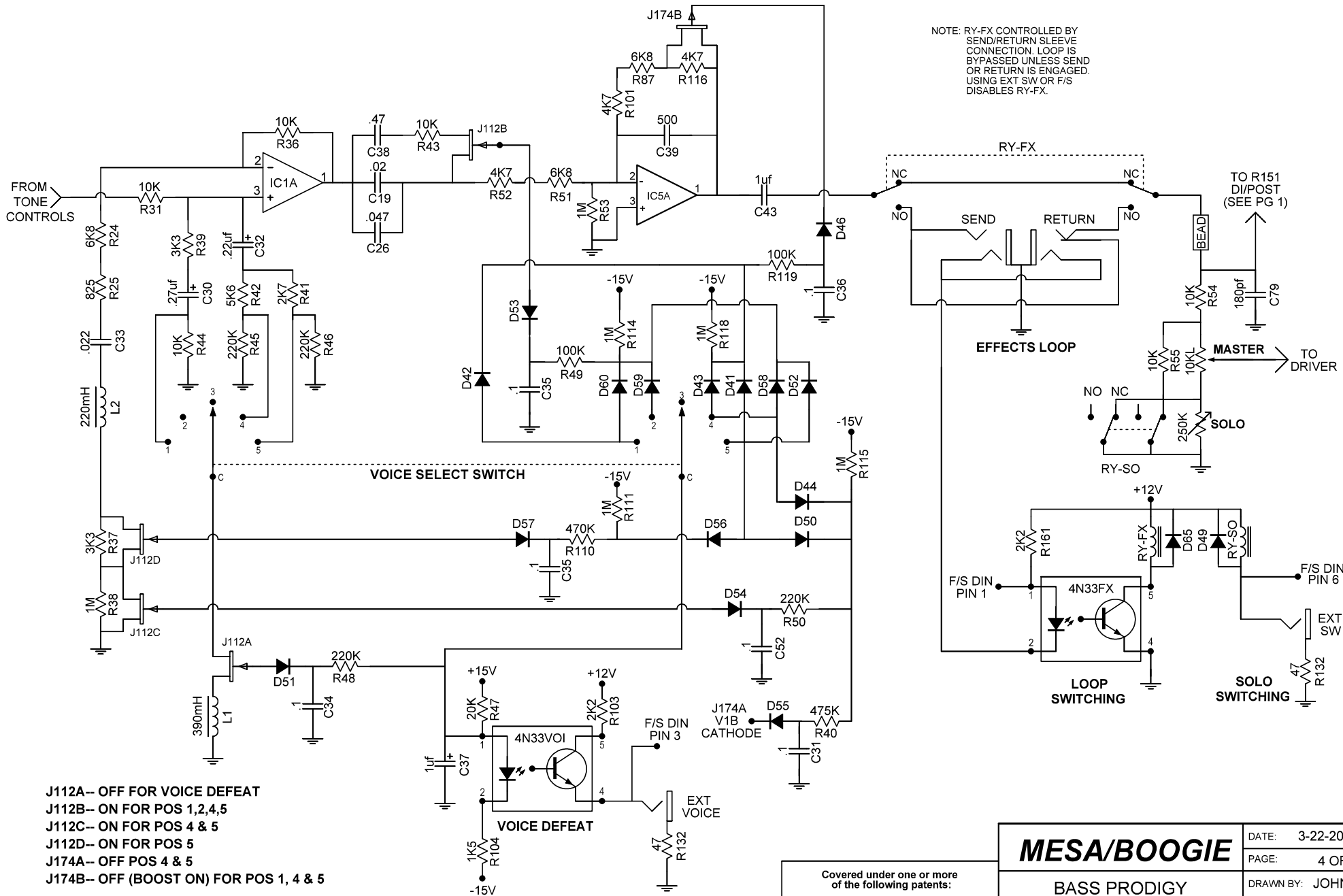
<b>MESA/BOOGIE</b>	DATE: 3-22-2016
	PAGE: 2 OF 7
	DRAWN BY: JOHN M.
	BOARD REV: PR15, 16, 17, 17A
COPYRIGHT 2014 MESA BOOGIE, LTD.	FILE NAME:



ALL DIODES 1N4448 UNLESS OTHERWISE NOTED  
ALL VOLTAGES MEASURED AT 120VAC LINE IN  
ALL OPAMPS-- PIN 8, +15V/PIN 4, -15V

Covered under one or more of the following patents:  
5,559,469; 5,793,252; 6,522,752; 6,621,907;  
6,724,897; 7,173,488; 7,193,458; 7,412,064;  
7,602,927

<b>MESA/BOOGIE</b>	DATE: 3-22-2016
	PAGE: 3 OF 7
	DRAWN BY: JOHN M.
	BOARD REV: PR15, 16, 17, 17A
INPUT AND TONE CONTROLS	FILE NAME:
COPYRIGHT 2014 MESA BOOGIE, LTD.	



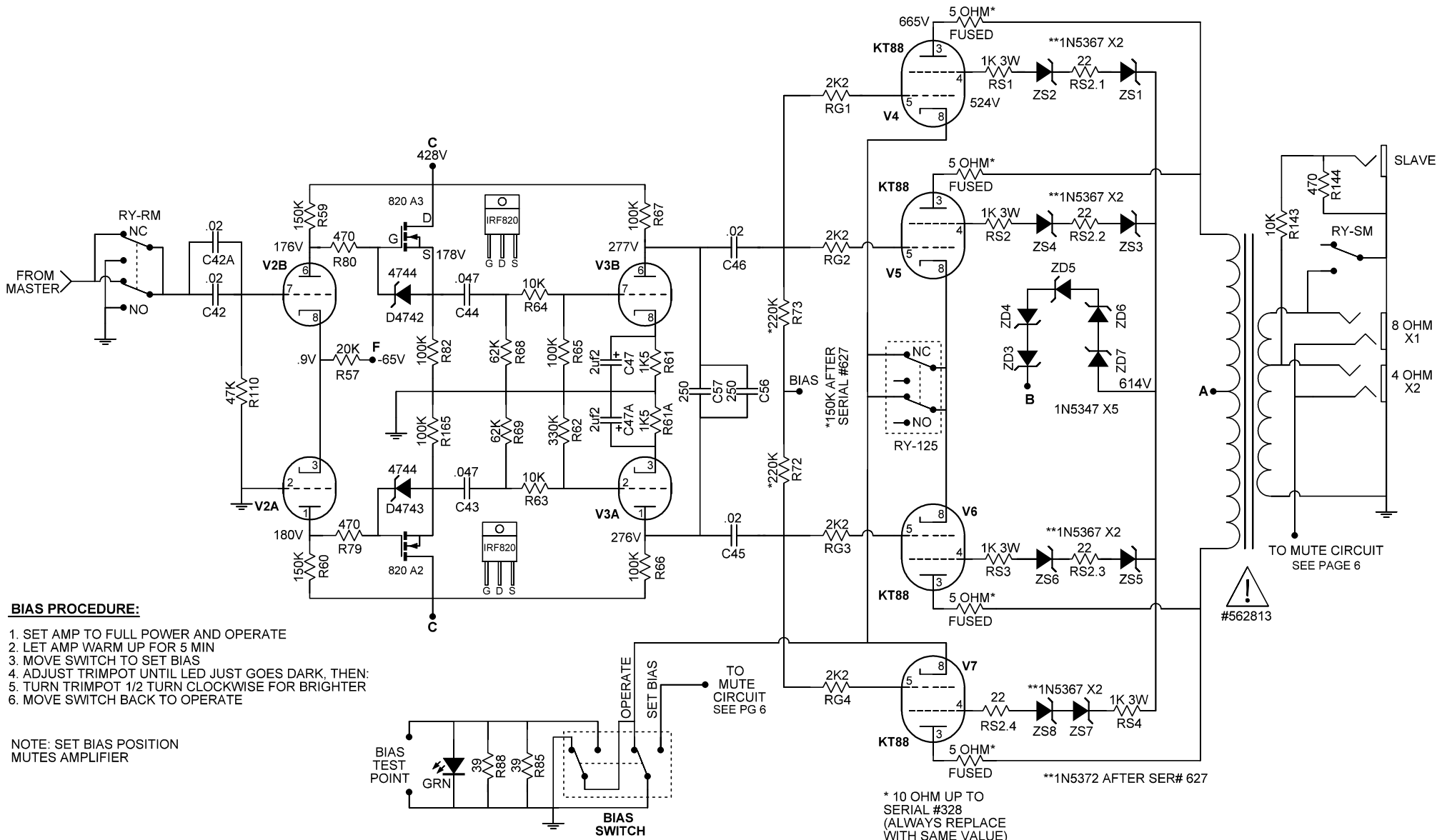
NOTE: RY-FX CONTROLLED BY SEND/RETURN SLEEVE CONNECTION. LOOP IS BYPASSED UNLESS SEND OR RETURN IS ENGAGED. USING EXT SW OR F/S DISABLES RY-FX.

- J112A-- OFF FOR VOICE DEFEAT
- J112B-- ON FOR POS 1,2,4,5
- J112C-- ON FOR POS 4 & 5
- J112D-- ON FOR POS 5
- J174A-- OFF POS 4 & 5
- J174B-- OFF (BOOST ON) FOR POS 1, 4 & 5

ALL DIODES 1N4448 UNLESS OTHERWISE NOTED  
 ALL VOLTAGES MEASURED AT 120VAC LINE IN  
 ALL OPAMPS-- PIN 8, +15V/PIN 4, -15V

Covered under one or more of the following patents:  
 5,559,469; 5,793,252; 6,522,752; 6,621,907;  
 6,724,897; 7,173,488; 7,193,458; 7,412,064;  
 7,602,927

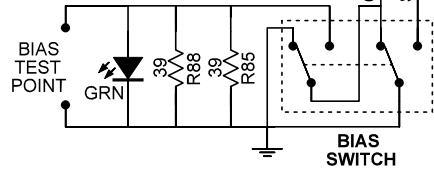
<b>MESA/BOOGIE</b>	DATE: 3-22-2016
	PAGE: 4 OF 7
	DRAWN BY: JOHN M.
	BOARD REV: PR15, 16, 17, 17A
VOICE CONTROL AND MASTER	FILE NAME:
COPYRIGHT 2014 MESA BOOGIE, LTD.	



**BIAS PROCEDURE:**

1. SET AMP TO FULL POWER AND OPERATE
2. LET AMP WARM UP FOR 5 MIN
3. MOVE SWITCH TO SET BIAS
4. ADJUST TRIMPOT UNTIL LED JUST GOES DARK, THEN:
5. TURN TRIMPOT 1/2 TURN CLOCKWISE FOR BRIGHTER
6. MOVE SWITCH BACK TO OPERATE

NOTE: SET BIAS POSITION MUTES AMPLIFIER



ALL DIODES 1N4448 UNLESS OTHERWISE NOTED  
 ALL VOLTAGES MEASURED AT 120VAC LINE IN  
 ALL OPAMPS-- PIN 8, +15V/PIN 4, -15V

\* 10 OHM UP TO SERIAL #328 (ALWAYS REPLACE WITH SAME VALUE)  
 \*3.9 OHM 5W AFTER SERIAL #404

Covered under one or more of the following patents:  
 5,559,469; 5,793,252; 6,522,752; 6,621,907;  
 6,724,897; 7,173,488; 7,193,458; 7,412,064;  
 7,602,927

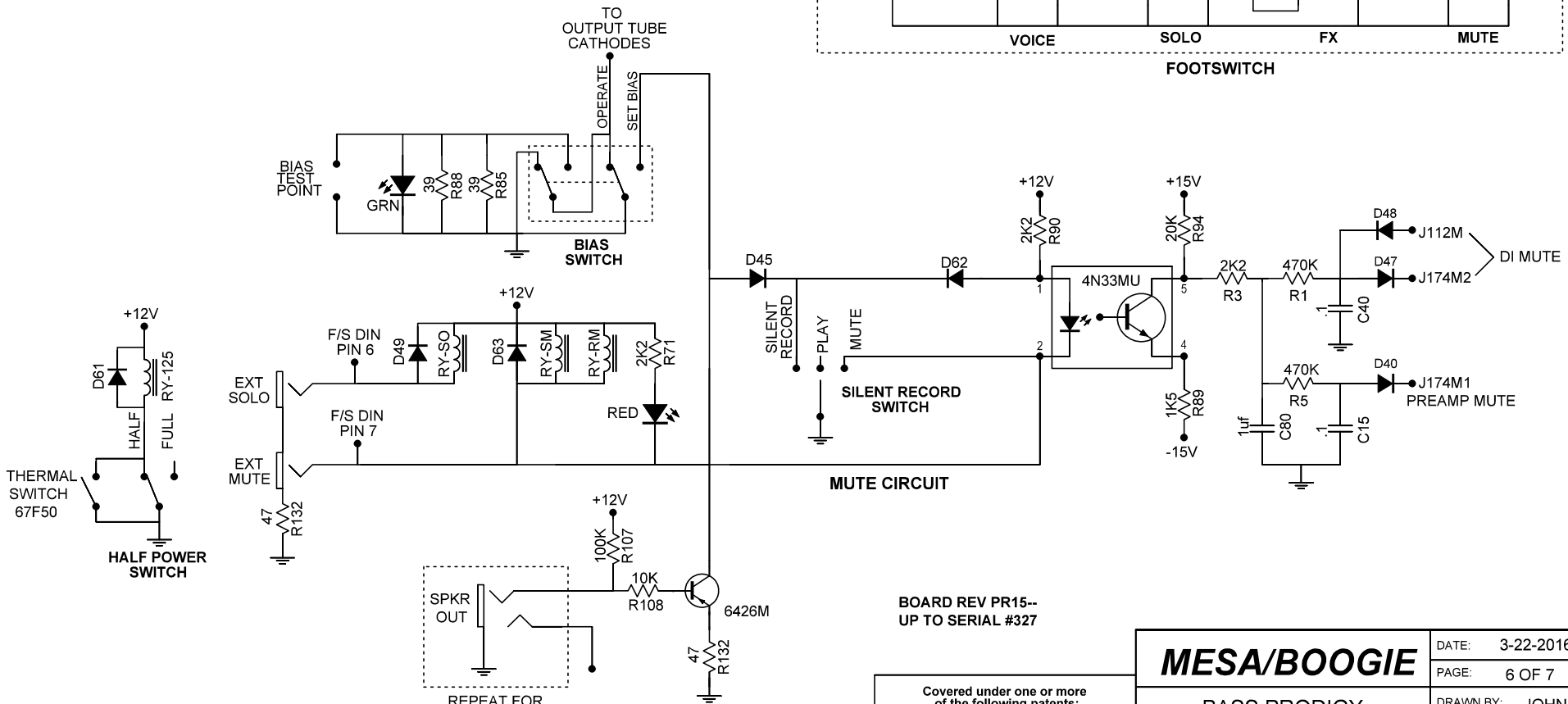
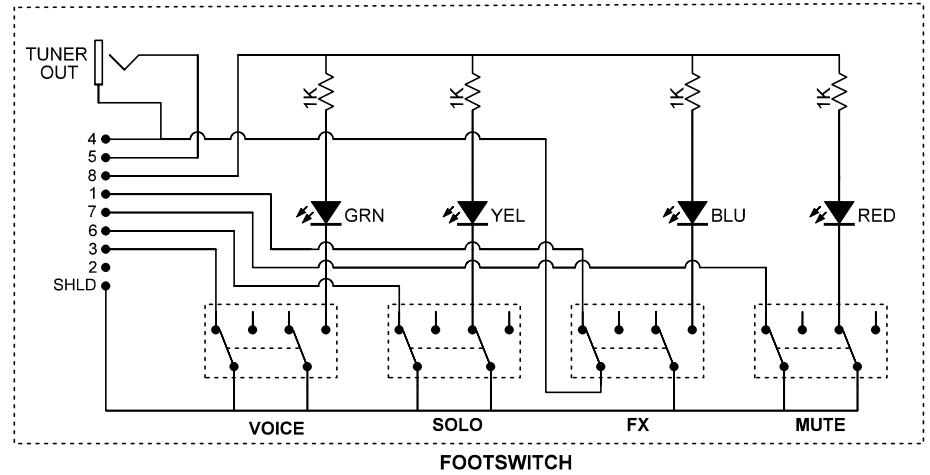
<b>MESA/BOOGIE</b>	DATE: 3-22-2016
	PAGE: 5 OF 7
	DRAWN BY: JOHN M.
	BOARD REV: PR15, 16, 17, 17A
BASS PRODIGY	FILE NAME:
DRIVER AND POWER AMP	
COPYRIGHT 2014 MESA BOOGIE, LTD.	

**MUTE CIRCUIT:** MUTES 2 PLACES-- PREAMP/DI AND DRIVER/POWER AMP

EXT SW MUTES BOTH PLACES  
 NO SPKR LOAD MUTES BOTH PLACES  
 SET BIAS SW MUTES BOTH PLACES  
 SILENT RECORD MUTES ONLY DRIVER/POWER AMP  
 MUTE MUTES BOTH PLACES  
 PLAY MUTES NOTHING

J112M AND J174M2 MUTES DI CIRCUIT  
 J174M1 MUTES PREAMP BEFORE TONE CONTROLS  
 RY-RM MUTES DRIVER INPUT  
 RY-SM MUTES SPEAKER OUTPUT

- F/S DIN PINS**
- 1 FX
  - 2 N/A
  - 3 VOICE
  - 4 GROUND
  - 1
  - 5 TUNER
  - 6 SOLO
  - 7 MUTE
  - 8 +12V
  - 2
  - SHLD 0V



BOARD REV PR15--  
 UP TO SERIAL #327

Covered under one or more  
 of the following patents:  
 5,559,469; 5,793,252; 6,522,752; 6,621,907;  
 6,724,897; 7,173,488; 7,193,458; 7,412,064;  
 7,602,927

<b>MESA/BOOGIE</b>		DATE: 3-22-2016
		PAGE: 6 OF 7
BASS PRODIGY		DRAWN BY: JOHN M.
SWITCH MATRIX		BOARD REV: PR15
COPYRIGHT 2014 MESA BOOGIE, LTD.		FILE NAME:

ALL DIODES 1N4448 UNLESS OTHERWISE NOTED  
 ALL VOLTAGES MEASURED AT 120VAC LINE IN  
 ALL OPAMPS-- PIN 8, +15V/PIN 4, -15V

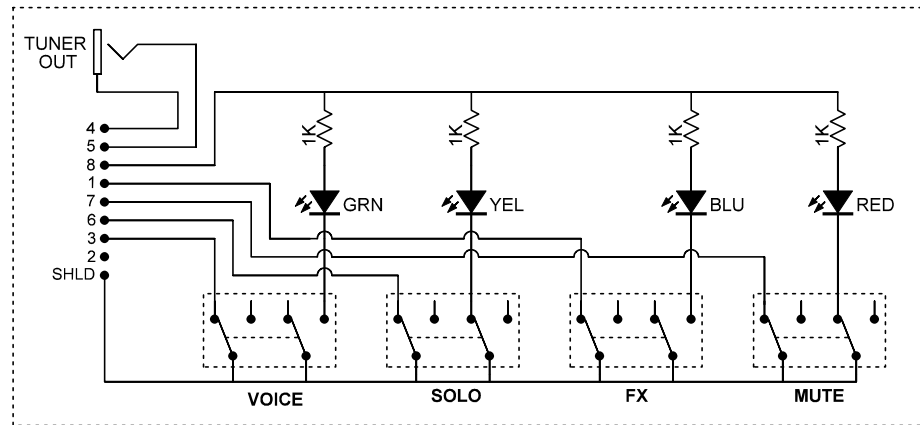
**MUTE CIRCUIT:** MUTES 2 PLACES-- PREAMP/DI AND DRIVER/POWER AMP

EXT SW MUTES BOTH PLACES  
 NO SPKR LOAD MUTES BOTH PLACES  
 SET BIAS SW MUTES BOTH PLACES  
 SILENT RECORD MUTES ONLY DRIVER/POWER AMP  
 MUTE MUTES PREAMP AND POWER AMP  
 PLAY MUTES NOTHING

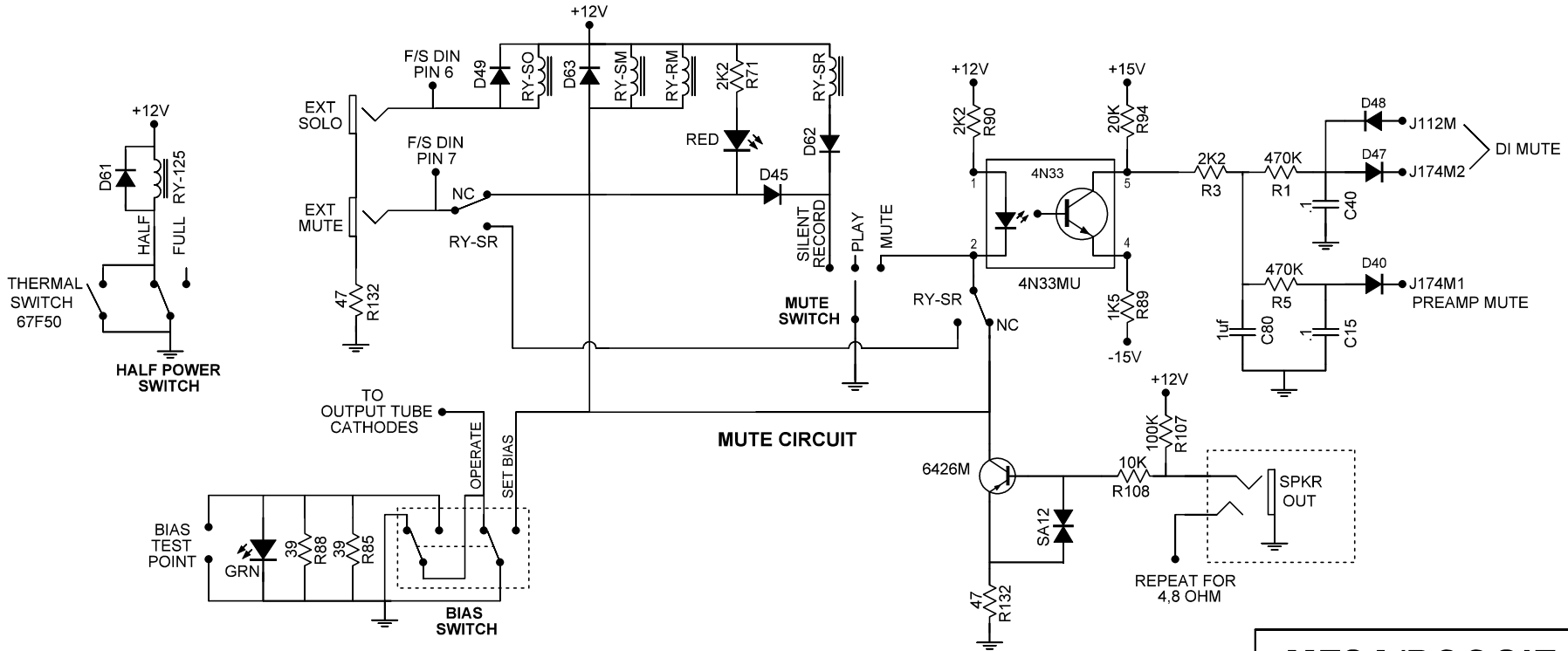
J112M AND J174M2 MUTES DI CIRCUIT  
 J174M1 MUTES PREAMP BEFORE TONE CONTROLS  
 RY-RM MUTES DRIVER INPUT  
 RY-SM MUTES SPEAKER OUTPUT

ALL DIODES 1N4448 UNLESS OTHERWISE NOTED  
 ALL VOLTAGES MEASURED AT 120VAC LINE IN

**F/S DIN PINS**  
 1 FX  
 2 N/A  
 3 VOICE  
 4 GROUND  
 5 TUNER  
 6 SOLO  
 7 MUTE  
 8 +12V  
 SHLD 0V



**FOOTSWITCH**



**MUTE CIRCUIT**

<b>MESA/BOOGIE</b>		DATE: 3-22-2016
		PAGE: 7 OF 7
BASS PRODIGY		DRAWN BY: JOHN M.
SWITCH MATRIX		BOARD REV: PR16, 17, 17A
COPYRIGHT 2014 MESA BOOGIE, LTD.		FILE NAME:

ALL DIODES 1N4448 UNLESS OTHERWISE NOTED  
 ALL VOLTAGES MEASURED AT 120VAC LINE IN  
 ALL OPAMPS-- PIN 8, +15V/PIN 4, -15V

**BOARD REV PR16--  
 AFTER SERIAL #327**

Covered under one or more of the following patents:  
 5,559,469; 5,793,252; 6,522,752; 6,621,907;  
 6,724,897; 7,173,488; 7,193,458; 7,412,064;  
 7,602,927

# Prodigy Supply Resistor Update

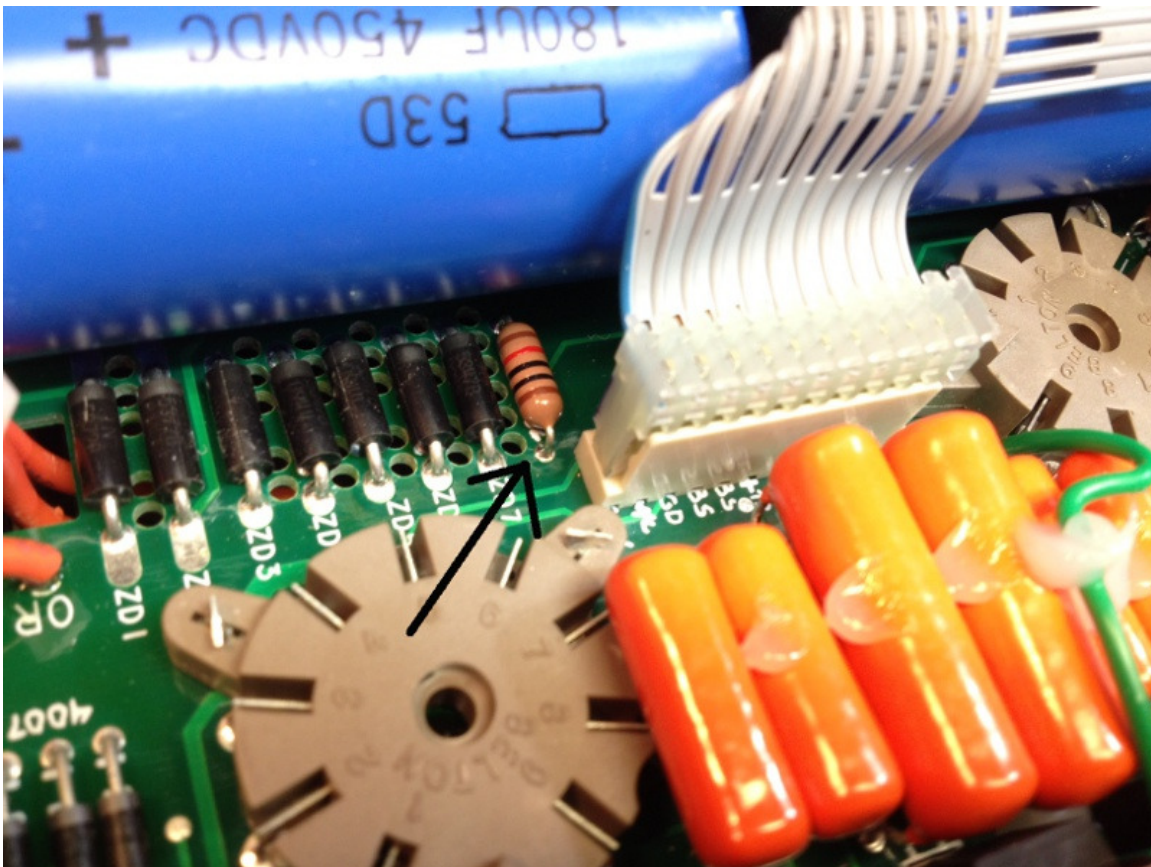
02/17/2014

Applies to amps up to serial #462  
(Some units before #462 have been updated---please contact Mesa  
for confirmation)

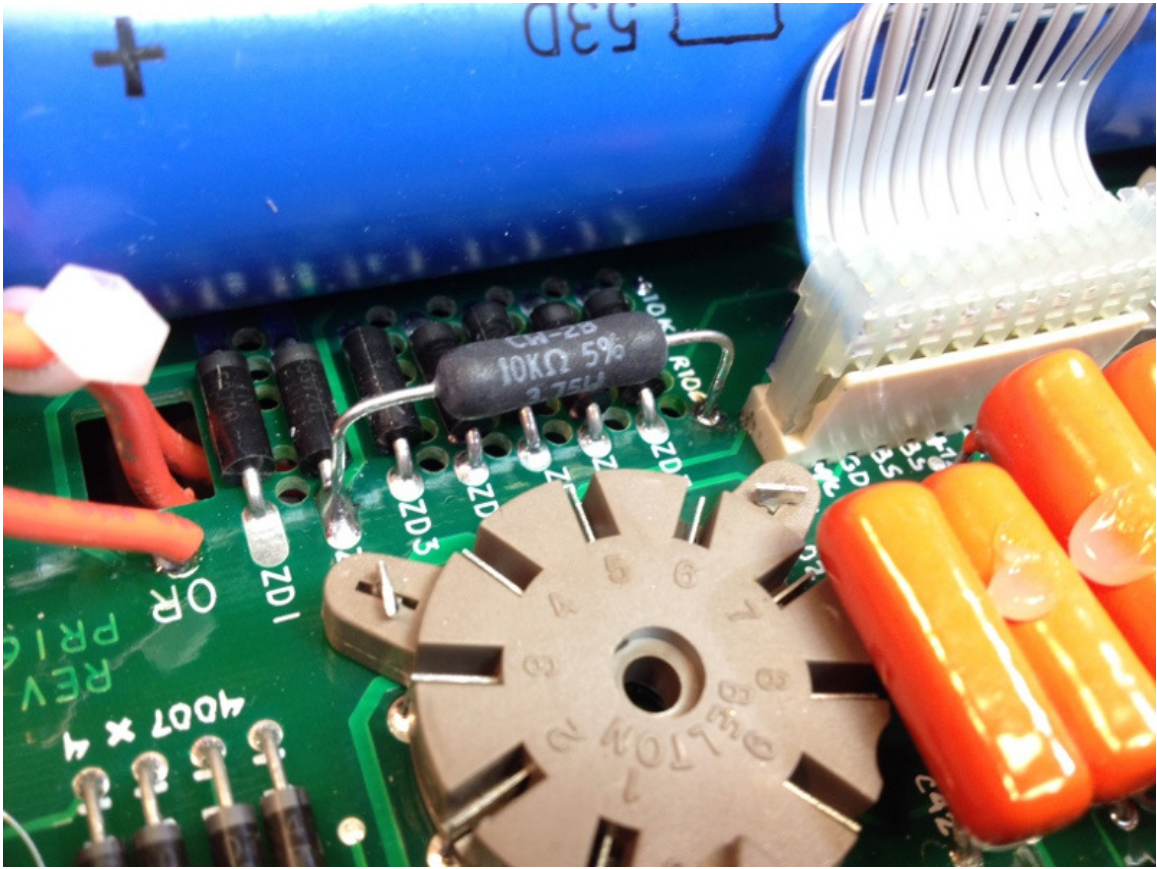
**Update:** Change R106, a high voltage dropping resistor, from a  
10K ½W to a 10K 3W. This will ensure reliability for the life of  
the amp.

10K 3W Mesa part #515010

Remove 10K 1/2W and replace as shown.







# January 2014 Mesa/Boogie Tech Bulletin

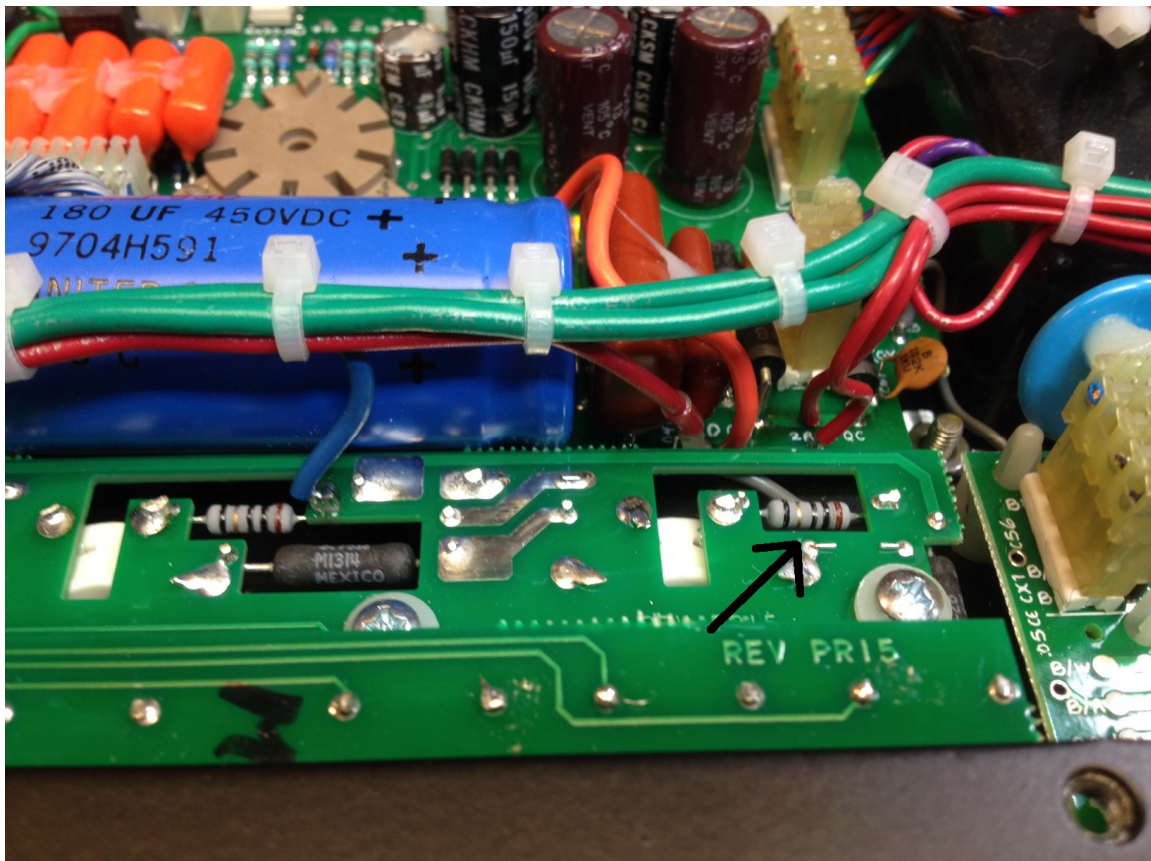
## Prodigy/ Strategy Plate Resistor Update

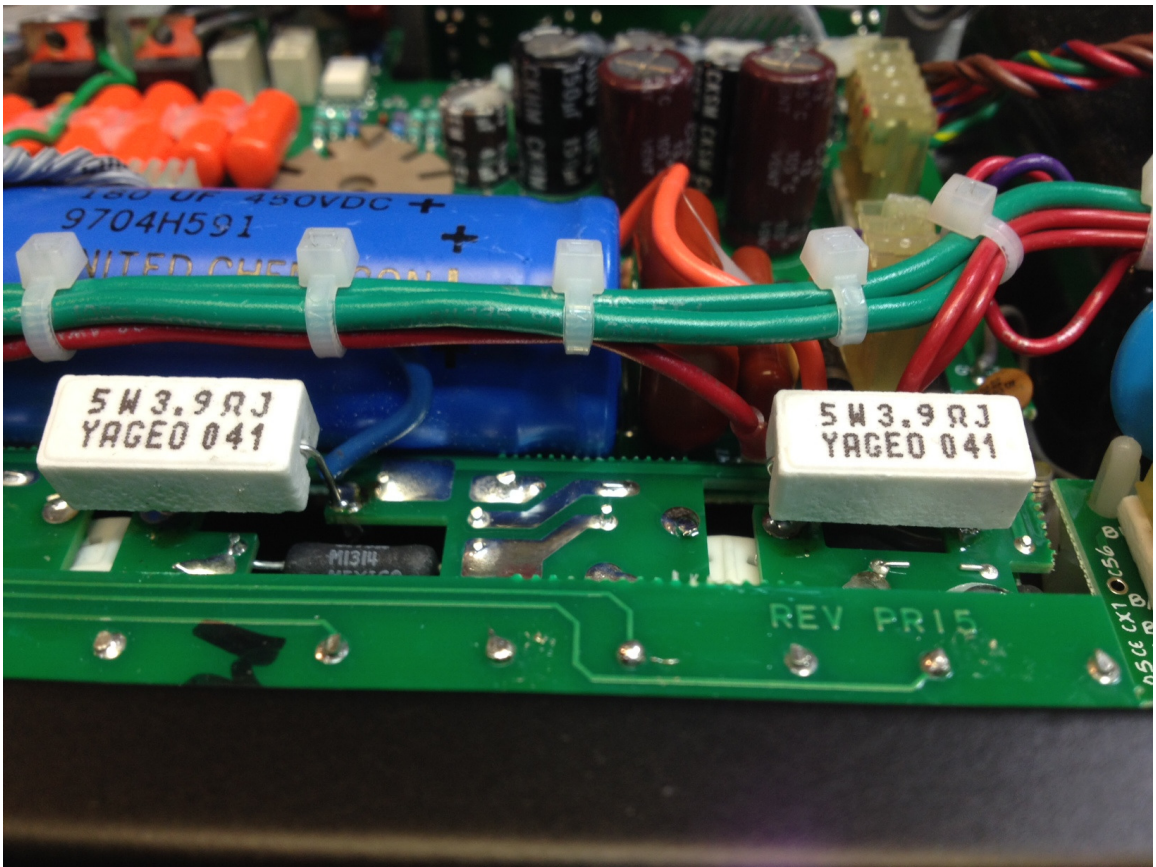
Amplifiers affected:

Strategy—up to serial #203, Prodigy—up to serial #404  
(Some units before these have been updated—please contact Mesa for confirmation)

**Update:** Replace the 5 ohm 2W (Prodigys up to serial #328 have a 10 ohm 1W) fused power tube plate resistors with a 3.9 ohm 5W concrete resistor. There are 4 per Prodigy, 8 per Strategy, Mesa part #516039.

**Fix:** Replace resistors as shown. Note that the new resistors are larger, and should sit above the circuit board. Also, there are jumper wires under the board that connect to the same pads as the plate resistors—be careful not to displace them.





# Prodigy November 2015 Switch/Current Limiter Installation

Applies to amplifiers below serial #627.

Current Limiter Part#: Domestic, Z.PROD--Export, Z.PRODX

This update is done in conjunction with a Power or Standby switch replacement. Switch part numbers: Retro “Ball End” switch, #600626. Standard Bat switch, #600631.

Remove black lead or existing Current Limiter from between IEC power cord input and fuseholder. Replace with new Current Limiter assembly as shown.

When installing the limiter, make sure it does not touch the chassis or the bottom lid. A small amount of RTV silicone may be used to glue it in place.

