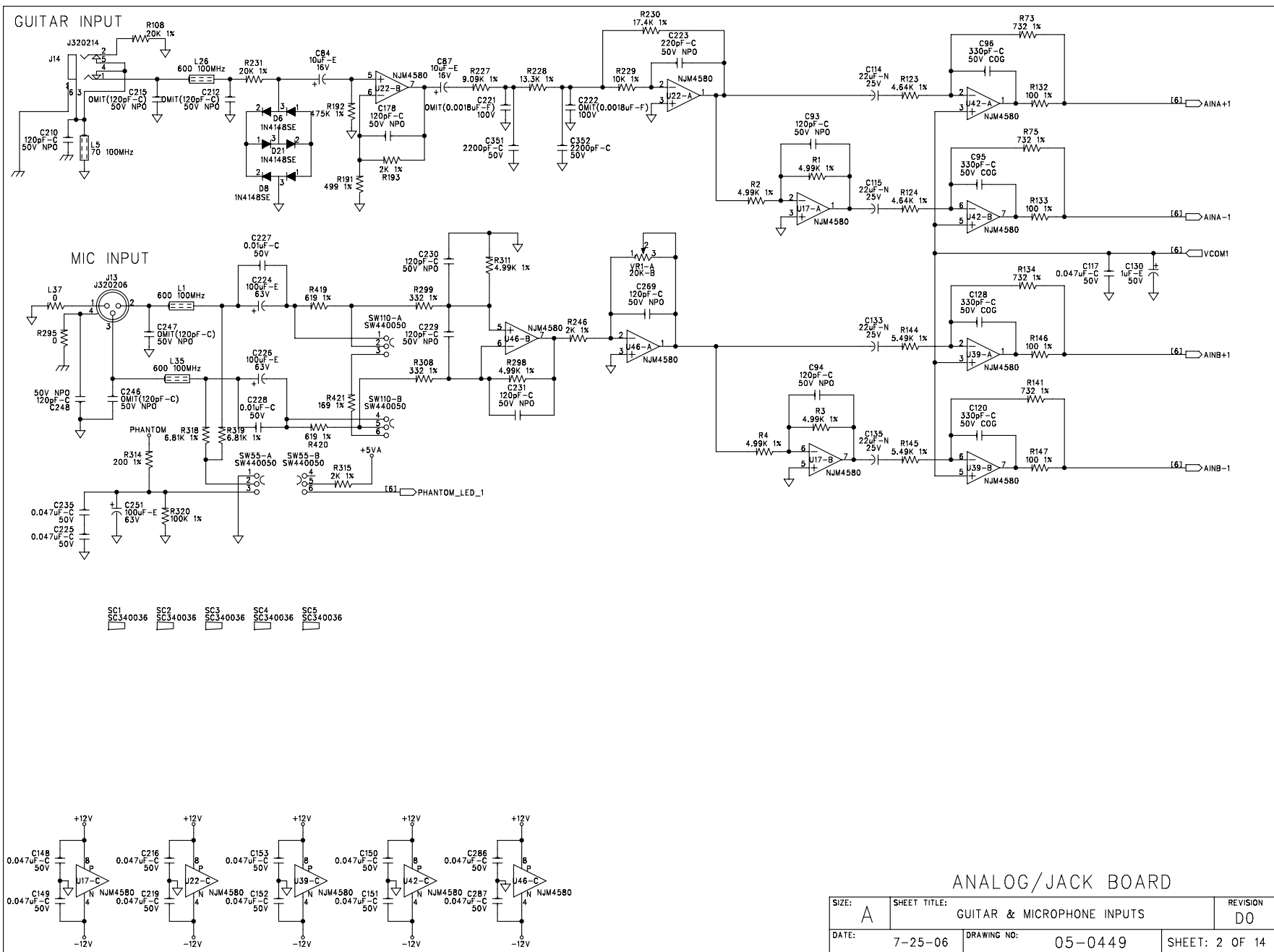


REV	DESCRIPTION	ECN #	INIT	DATE
D0	REMOVE UNUSED COMPONENTS, APPLY CHANGED TO PCB	32389	MTB	7-25-06
C2	REMOVE UNUSED COMPONENTS	32388	MTB	7-25-06
C1	PART VALUE CHANGES	30602	MTB	6-14-05
C0	RELEASE TO PRODUCTION	3046	MTB	8-31-04
B2	CHANGE R1 TO 32-1281; R2 TO 32-1280; R215 TO 1.87K 1% AND R225 TO 3.24K 1%.	3033	MTB	8-12-04
X0	PROTOTYPE EVALUATION	N/A	MTB	8-6-04
B1	CHANGE C193 TO 22uF 60-0010	2979	MTB	6-8-04
B0	PRODUCTION	2918	MTB	5-6-04
A1	PRE-PRODUCTION	2909	MTB	4-20-04
A0	PRE-PRODUCTION	2857	MTB	2-24-04

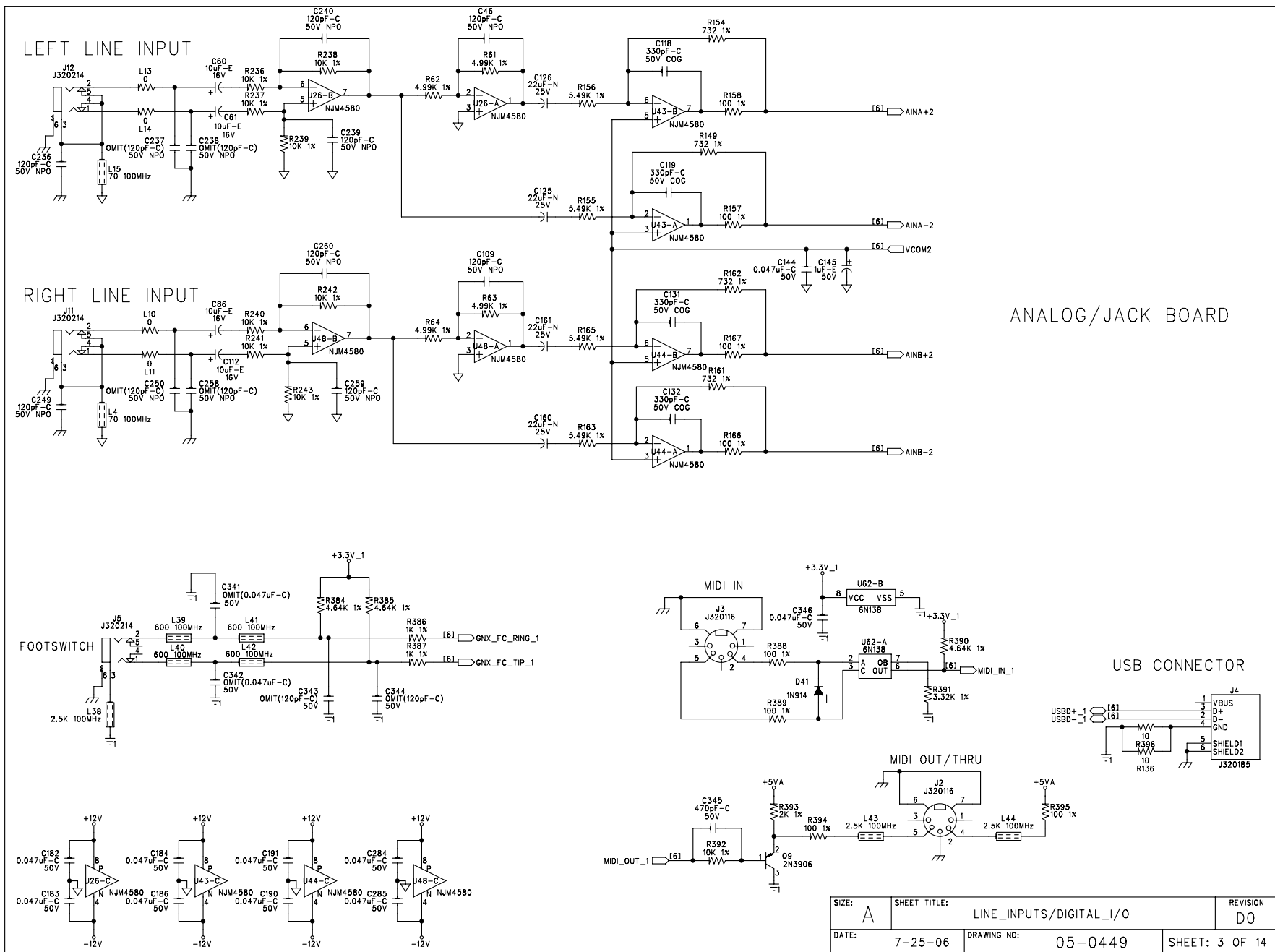
  

REVISION HISTORY			
<p><b>DigiTech</b> 8780 South Sandy Parkway Sandy Utah 84070</p>			
TITLE: GNX4			
DESIGNER: M. BYBEE		ENGINEER: A. LOVEGROVE	
SIZE: A	DRAWING NO: 05-0449	REVISION: D0	
DATE: 7-25-06	FILENAME: 05049D0.SCH	SHEET: 1 OF 14	



ANALOG/JACK BOARD

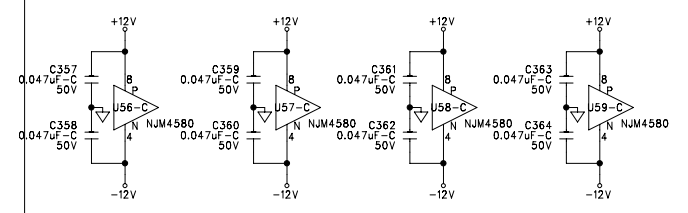
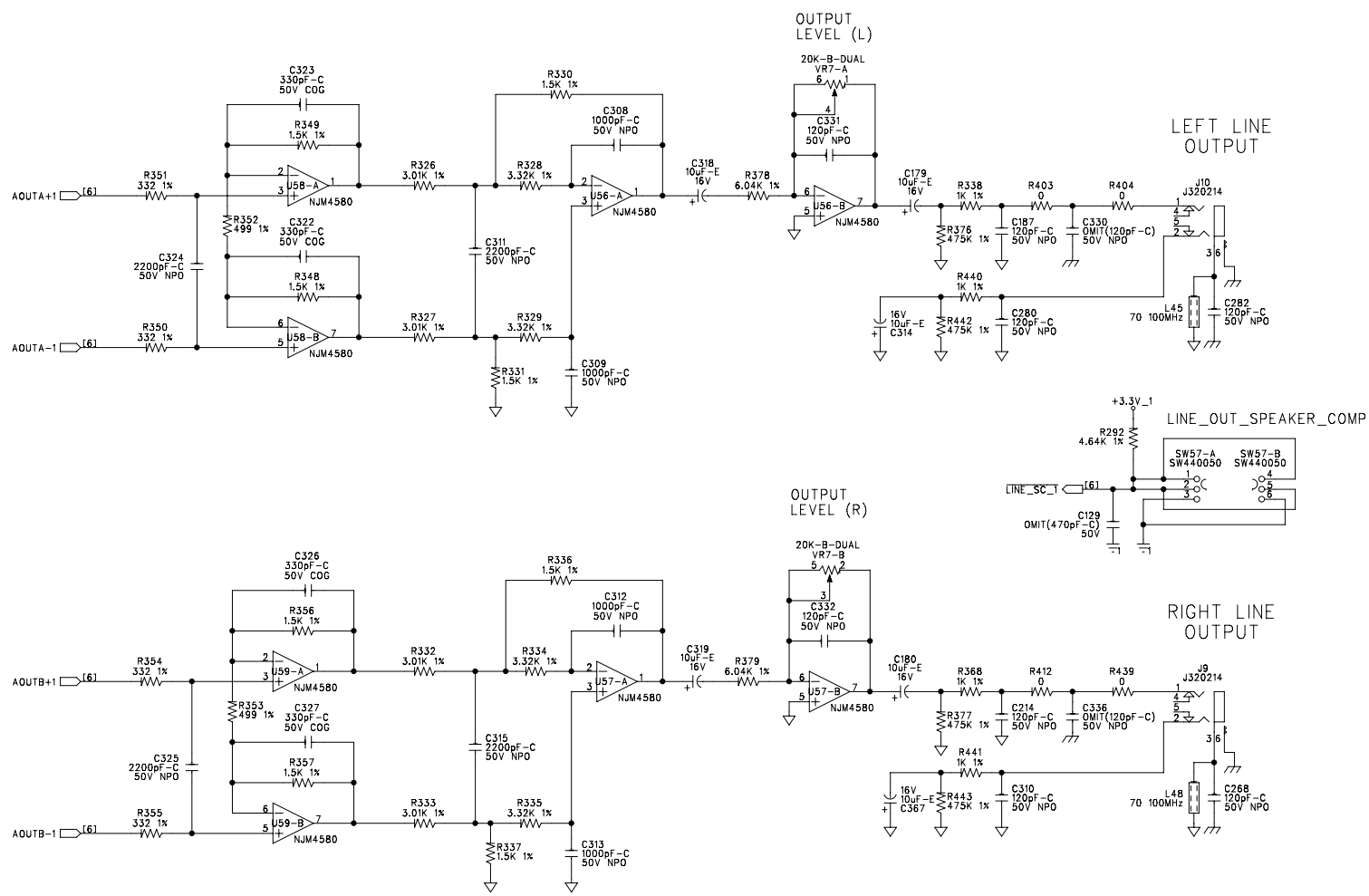
SIZE: A	SHEET TITLE: GUITAR & MICROPHONE INPUTS	REVISION: D0
DATE: 7-25-06	DRAWING NO: 05-0449	SHEET: 2 OF 14



ANALOG/JACK BOARD

USB CONNECTOR

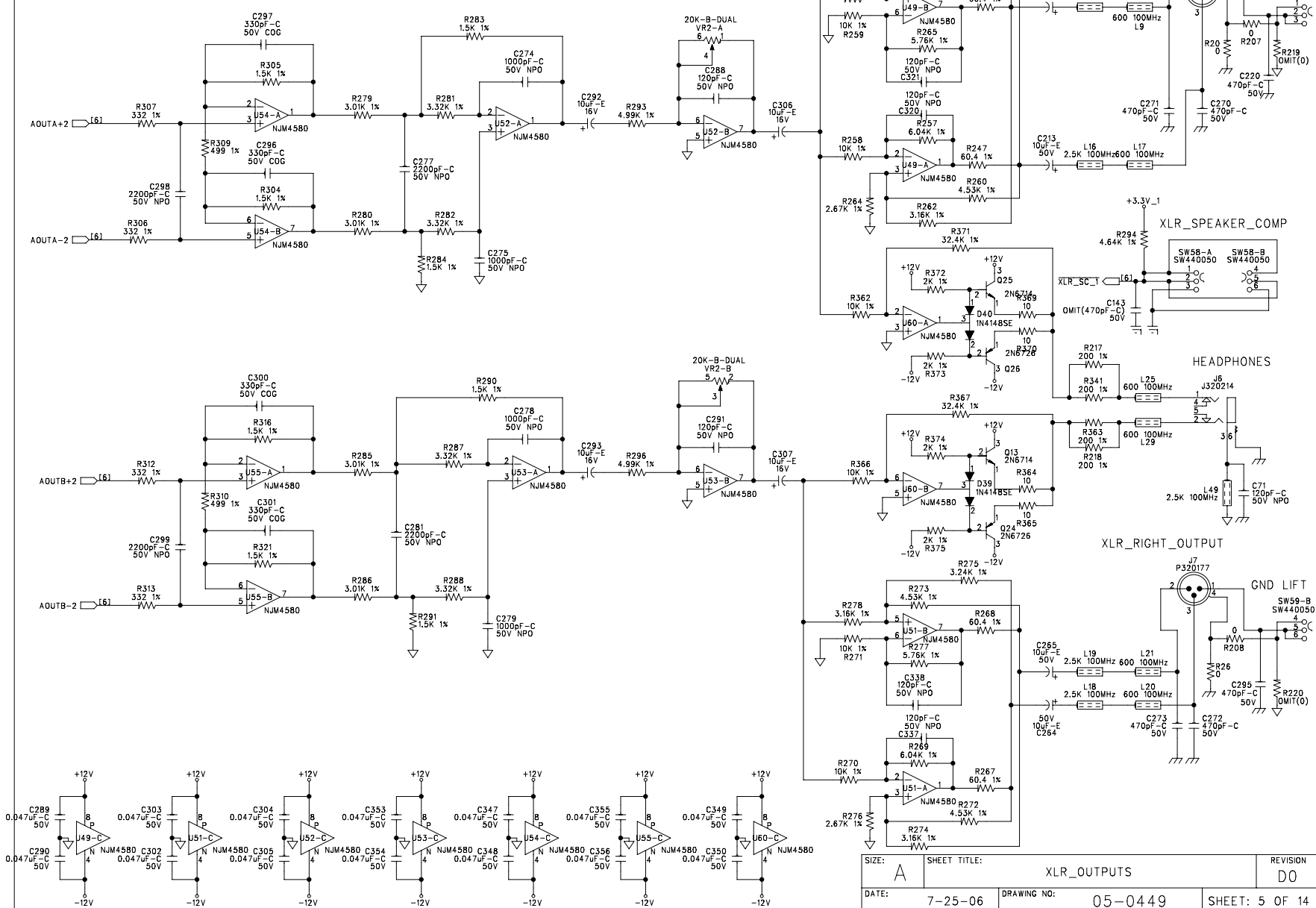
SIZE: A	SHEET TITLE: LINE_INPUTS/DIGITAL_I/O	REVISION: D0
DATE: 7-25-06	DRAWING NO: 05-0449	SHEET: 3 OF 14



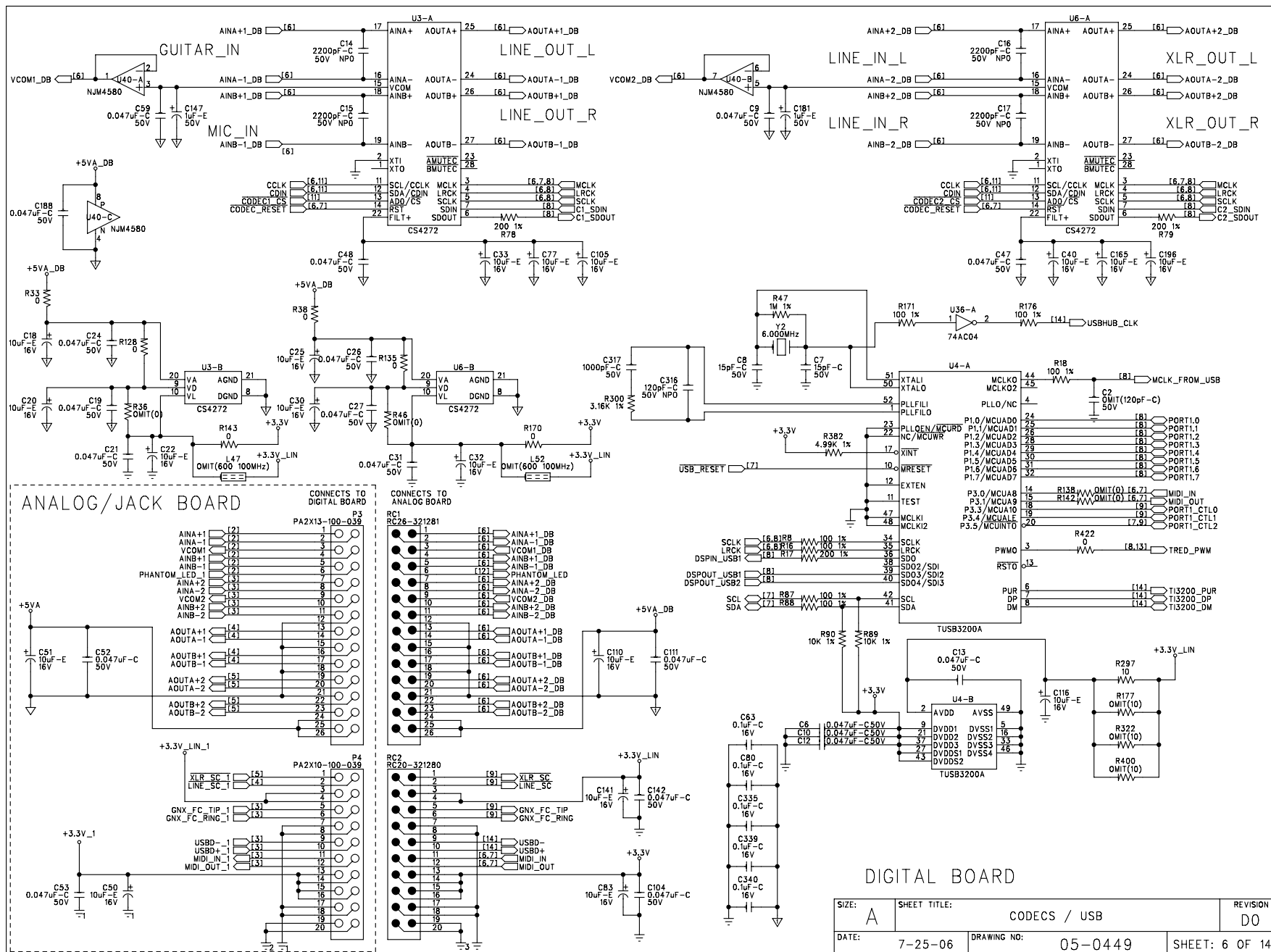
ANALOG/JACK BOARD

SIZE: A	SHEET TITLE: 1/4_OUTPUTS	REVISION: DO
DATE: 7-25-06	DRAWING NO: 05-0449	SHEET: 4 OF 14

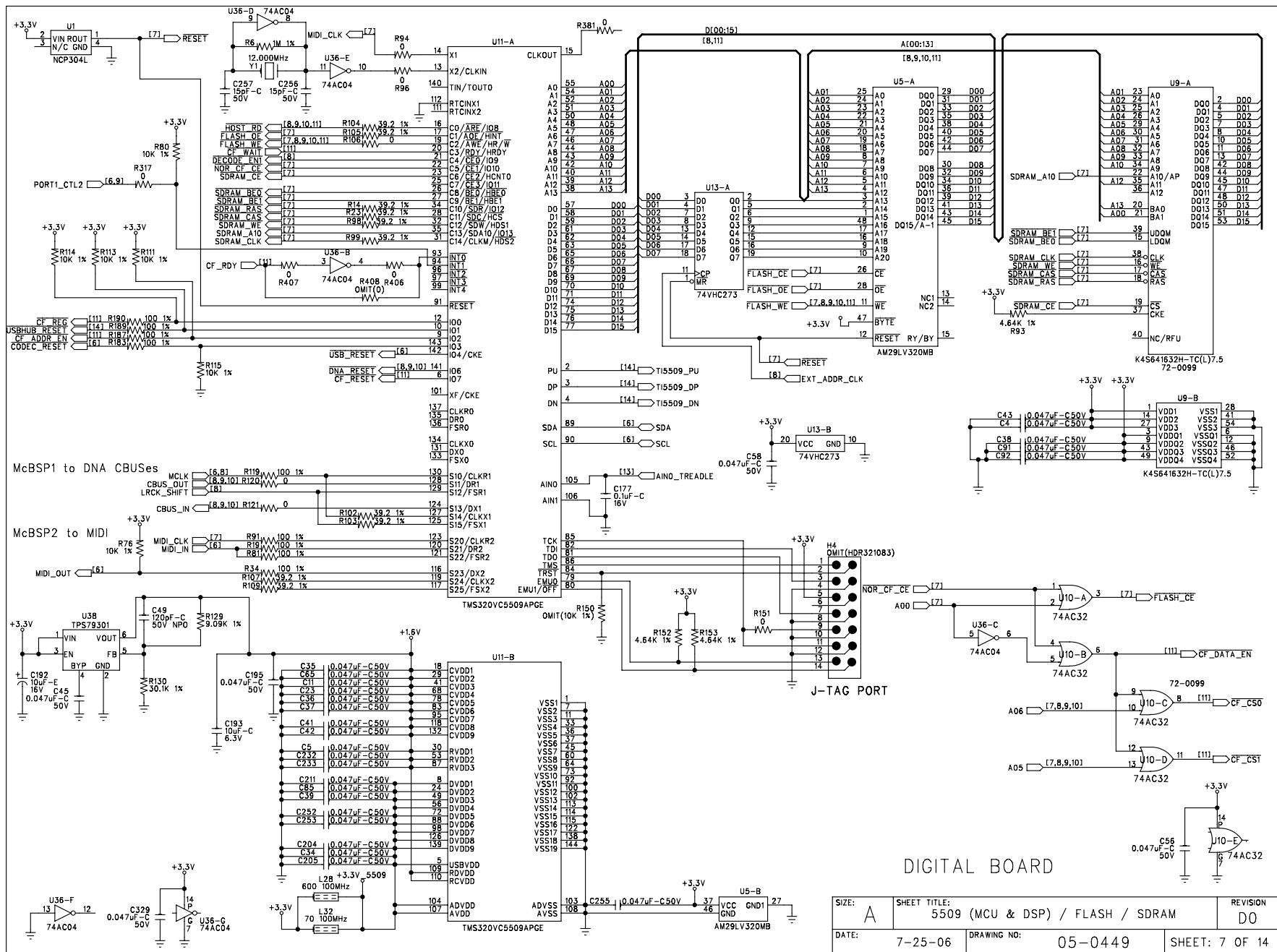
ANALOG/JACK BOARD



SIZE: A	SHEET TITLE: XLR_OUTPUTS	REVISION: DO
DATE: 7-25-06	DRAWING NO: 05-0449	SHEET: 5 OF 14

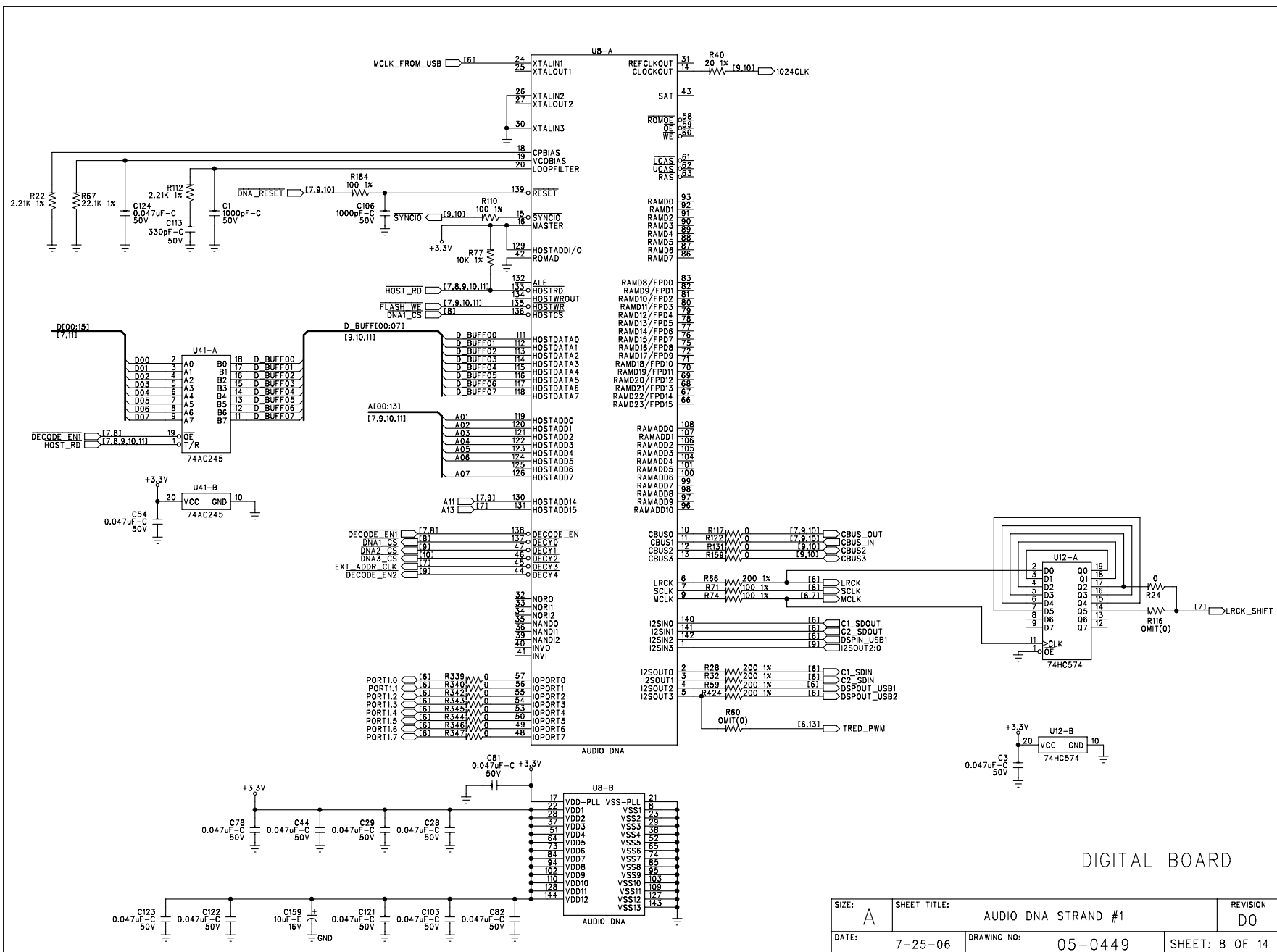


SIZE: A	SHEET TITLE: CODECS / USB	REVISION: DO
DATE: 7-25-06	DRAWING NO: 05-0449	SHEET: 6 OF 14



DIGITAL BOARD

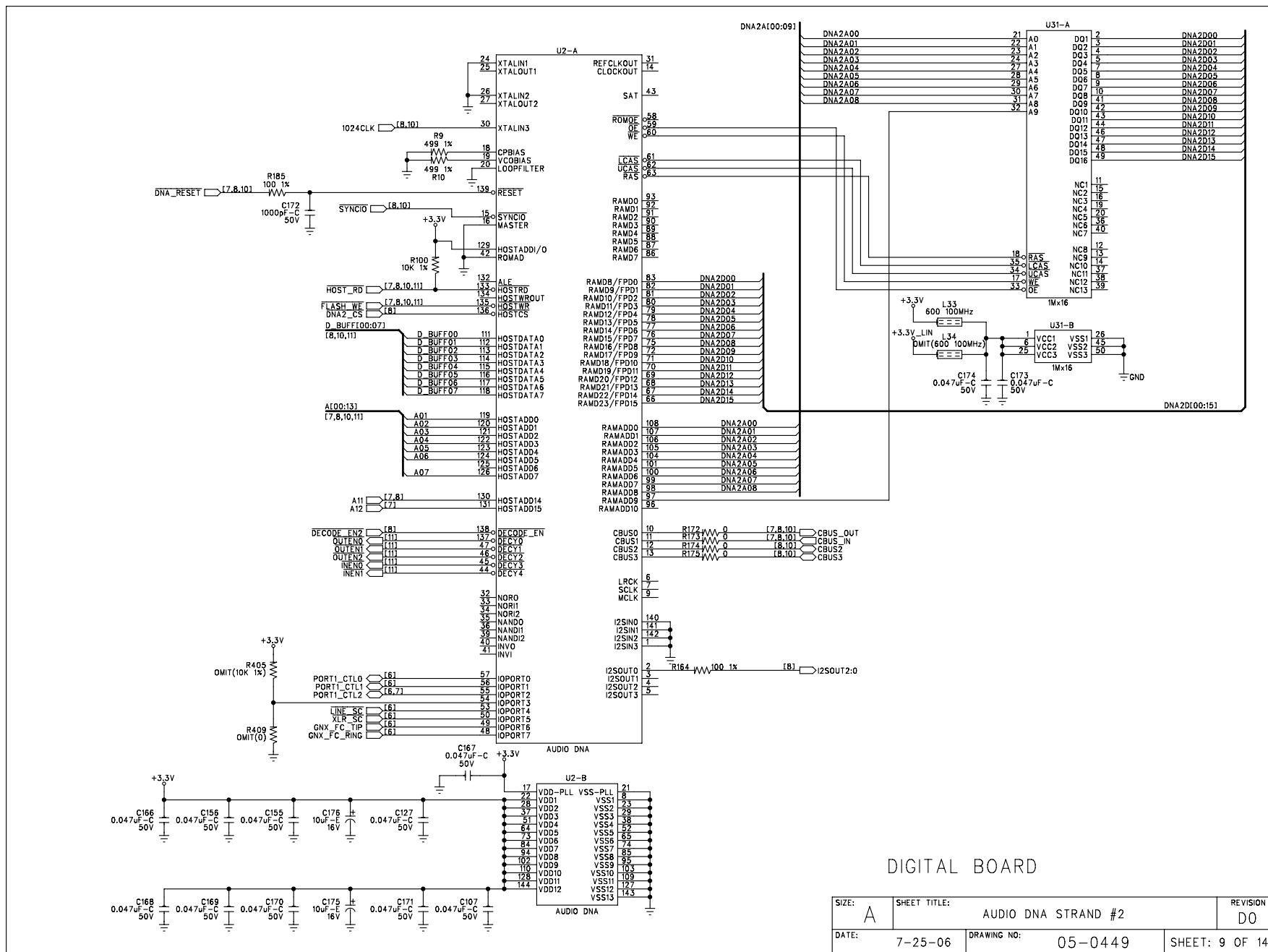
SIZE: A	SHEET TITLE: 5509 (MCU & DSP) / FLASH / SDRAM	REVISION: D0
DATE: 7-25-06	DRAWING NO: 05-0449	SHEET: 7 OF 14



DIGITAL BOARD

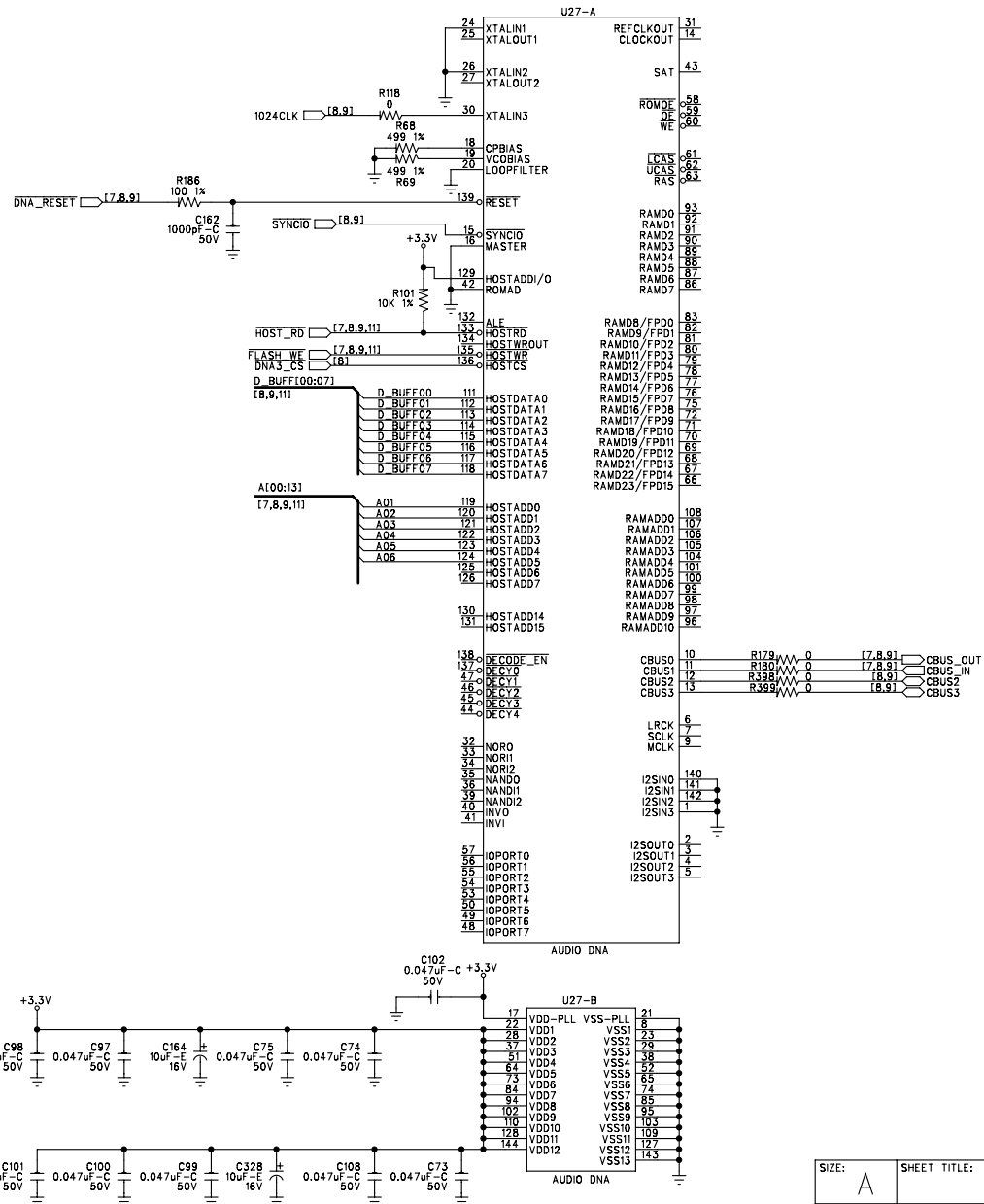
SIZE: A	SHEET TITLE: AUDIO DNA STRAND #1	REVISION: DO
DATE: 7-25-06	DRAWING NO: 05-0449	SHEET: 8 OF 14





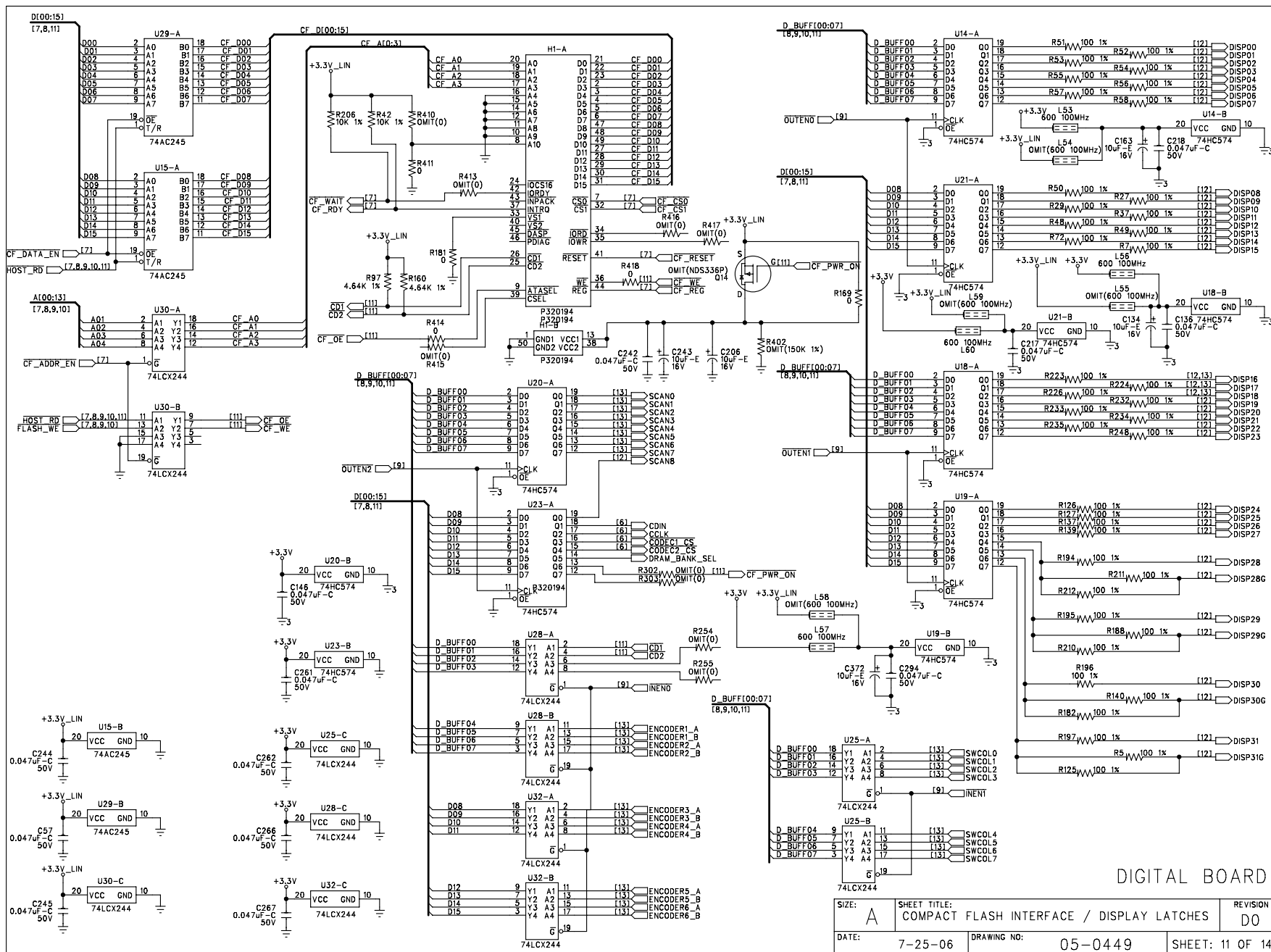
DIGITAL BOARD

SIZE: A	SHEET TITLE: AUDIO DNA STRAND #2	REVISION: DO
DATE: 7-25-06	DRAWING NO: 05-0449	SHEET: 9 OF 14



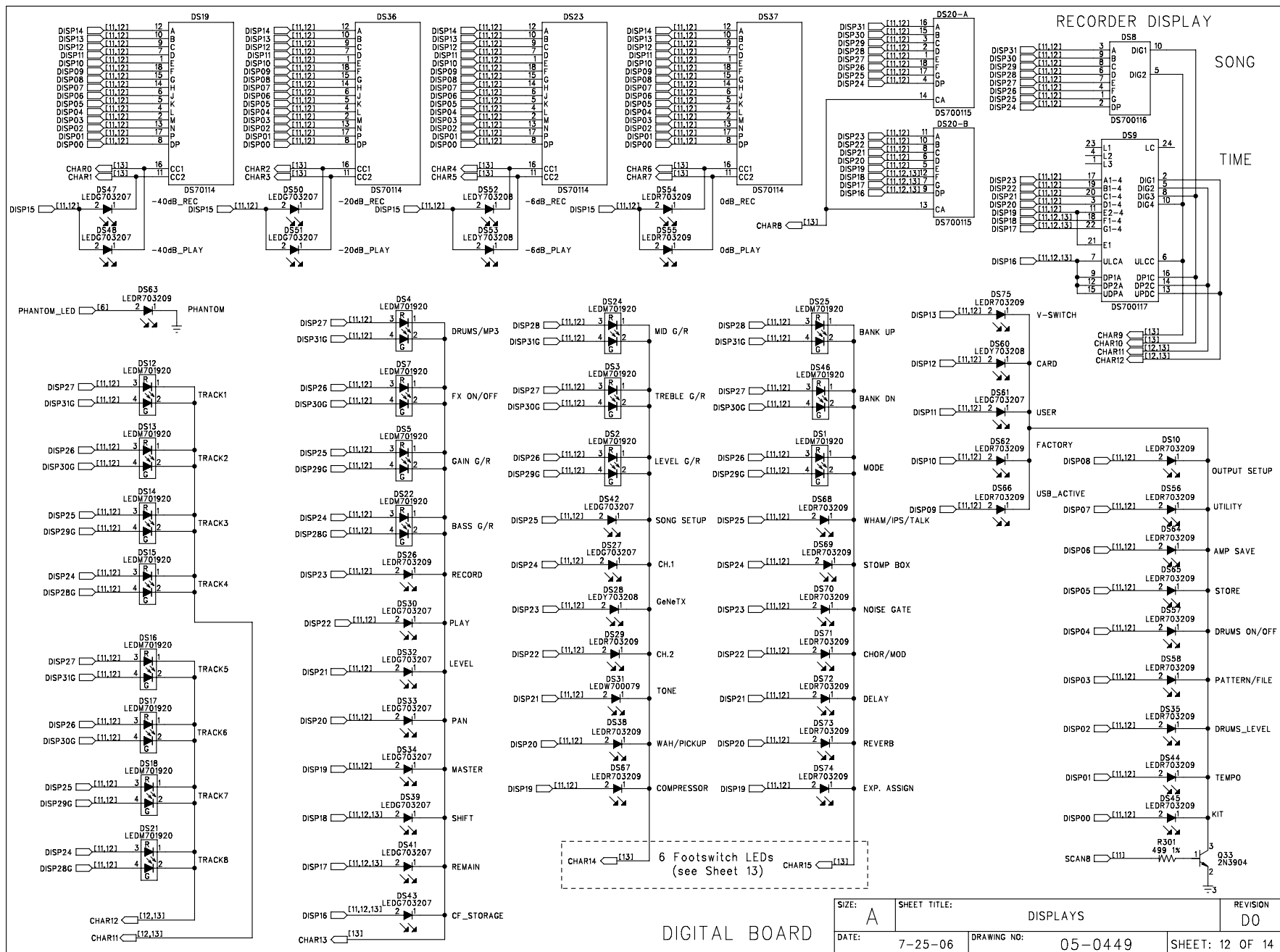
DIGITAL BOARD

SIZE: A	SHEET TITLE: AUDIO DNA STRAND #3	REVISION: D0
DATE: 7-25-06	DRAWING NO: 05-0449	SHEET: 10 OF 14



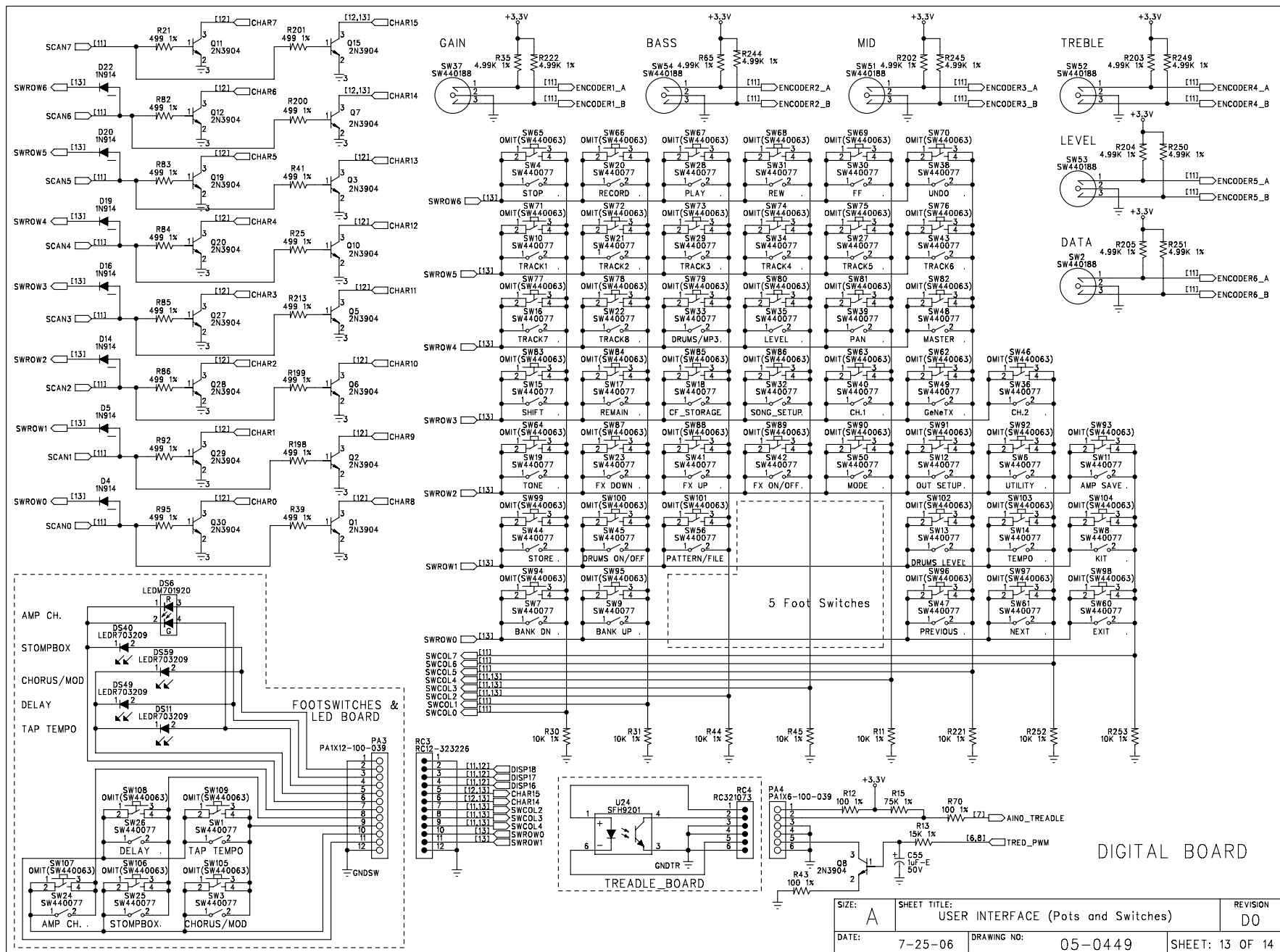
DIGITAL BOARD

SIZE: A	SHEET TITLE: COMPACT FLASH INTERFACE / DISPLAY LATCHES	REVISION: D0
DATE: 7-25-06	DRAWING NO: 05-0449	SHEET: 11 OF 14

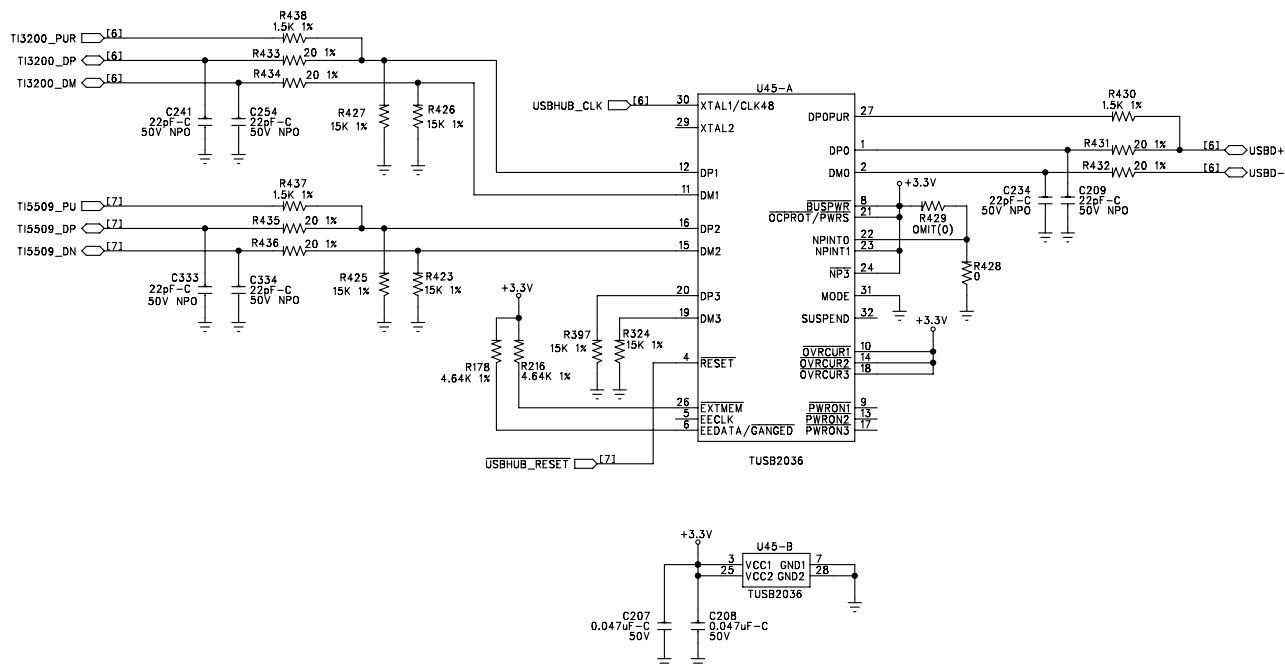


DIGITAL BOARD

SIZE: A	SHEET TITLE: DISPLAYS	REVISION: DO
DATE: 7-25-06	DRAWING NO: 05-0449	SHEET: 12 OF 14



SIZE: A	SHEET TITLE: USER INTERFACE (Pots and Switches)	REVISION: D0
DATE: 7-25-06	DRAWING NO: 05-0449	SHEET: 13 OF 14



SIZE: A	SHEET TITLE: USB HUB	REVISION D0
DATE: 7-25-06	DRAWING NO: 05-0449	SHEET: 14 OF 14

Bill Of Materials for 050449D0.sch on Tue Jul 25 10:59:20 2006

Qty	Reference	HMG#	Description	Audit	Schematic Part	PCB Decal
1	PCB1	80-0449	PCB 80-0449 (GNX300)	PT2044	80XXXXXY	BARCODE
31	A18-40 A50-57	NON-PART	NON-PART PCB ONLY BRKOFF PRT (.50 ROUTING)	PT2738	BRKOFF50	BRKOFF50
2	C221-222	OMIT	OMIT CAP 0.0018uF FILM PTR 100V 5% RF TA (56-0026)	MB6-04	C0.0018UF100JRO	RFDC200
2	C227-228	62-1311	CAP 0.01uF CER 50V 20% Y5V 0603 TA	PT2665	C0.01UC50M0603	0603
150	C3-6 C9-13 C19 C21 C23-24 C26-29 C31 C34-39 C41-45 C47-48 C52-54 C56-59 C65 C67 C73-75 C78 C81-82 C85 C91-92 C97-104 C107-108 C111 C117 C121-124 C127 C136 C138-140 C142 C144 C146 C148-153 C155-156 C166-171 C173-174 C182-184 C186 C188 C190-191 C195 C204-205 C207-208 C211 C216-219 C225 C232-233 C235 C242 C244-245 C252-253 C255 C261-262 C266-267 C284-287 C289-290 C294 C302-305 C329 C346-350 C353-364 C369	62-1309	CAP 0.047uF CER 50V 20% Y5V 0603 TA	PT2650	C0.047UC50M0603	0603
6	C62 C64 C88-89 C341-342	OMIT	OMIT CAP 0.047uF CER 50V 20% Y5V 0603 TA (62-1309)	PT2783	C0.047UC50M0603O	0603
6	C63 C80 C177 C335 C339-340	62-1310	CAP 0.1uF CER 16V 20% Y5V 0603 TA	PT2696	C0.1UC16M0603	0603
2	C157-158	OMIT	OMIT CAP 0.1uF CER 50V +80%/-20% Y5V 0603 TA (62-1312)	PT2805	C0.1UC50Z0603O	0603
8	C274-275 C278-279 C308-309 C312-313	62-3149	CAP 1000pF CER 50V 5% NP0 0805 TA	PT2924	C1000PC50J0805	0805
5	C1 C106 C162 C172 C317	62-1308	CAP 1000pF CER 50V 20% Y5V 0603 TA	PT2651	C1000PC50M0603	0603
5	C66 C79 C154 C201 C366	60-0064	CAP 1000uF EL 16V 20% GP 10x17R 5LL TA	PT1334	C1000UE16MR	REM200P
2	C69 C90	60-0063	CAP 1000uF EL 35V 20% GP 13x25R 5LL BK	PT1207	C1000UE35MR	REQ200P
7	C194 C197-198 C202-203 C365 C371	60-0201	CAP 100uF EL 16V 20% GP 6x8R 5LS TA	PT1378	C100UE16MR	REG200P
1	C185	60-0055	CAP 100uF EL 25V 20% GP 6x11R 5LS TA	PT1407	C100UE25MR	REG200P
2	C199-200	60-1013	CAP 100uF EL 50V 20% GP 8x11R 5LS TA	PT1408	C100UE50MR	REJ200P
4	C189 C224 C226 C251	60-1034	CAP 100uF EL 63V 20% GP 10x16R TA	PT1777	C100UE63MR	REM200P
1	C193	62-3130	CAP 10uF CER 6.3V 10% 0805 TA	MB(8-0	C10UC6.3K0805	0805
18	C50-51 C60-61 C84 C86-87 C112 C179-180 C292-293 C306-307 C314 C318-319 C367	60-0049-01	CAP 10uF EL 16V 20% GP 5x7R 5LS TA	PT1080	C10UE16MR	RED200P
27	C18 C20 C22 C25 C30 C32-33 C40 C77 C83 C105 C110 C116 C134 C141 C159 C163-165 C175-176 C192 C196 C206 C243 C328 C372	60-1063	CAP 10uF EL 16V 20% GP 4X5.5SM TA	PT1771	C10UE16MS	ECR4X5.5

4	C213 C263-265	60-0090	CAP 10uF EL 50V 20% GP 5x11R 5LS TA	PT1206 C10UE50MR	REE200P
5	C68 C70 C76 C137 C370	60-1074	CAP 10uF EL 50V 20% HT 5x11R 5LS TA	PT1972 C10UE50MR1	REE200P
34	C46 C49 C71 C93-94 C109 C178 C187 C210 C214 C229-231 C236 C239-240 C248-249 C259-260 C268-269 C280 C282 C288 C291 C310 C316 C320-321 C331-332 C337-338	62-1304	CAP 120pF CER 50V 5% NPO 0603 TA	PT2655 C120PC50J0603	0603
13	C2 C212 C215 C237-238 C246-247 C250 C258 C330 C336 C343-344	OMIT	OMIT CAP 120pF CER 50V 5% NPO 0603 TA (62-1304)	PT2750 C120PC50J06030	0603
4	C7-8 C256-257	62-1300	CAP 15pF CER 50V 5% NPO 0603 TA	PT2659 C15PC50J0603	0603
2	C130 C145	60-0044-01	CAP 1uF EL 50V 20% GP 5x7R 5LS TA	PT1079 C1UE50MR	RED200P
3	C55 C147 C181	60-0202	CAP 1uF EL 50V 20% GP 4X5.5SM TA	MB(8-0 C1UE50MS	ECR4X5.5
14	C14-17 C277 C281 C298-299 C311 C315 C324-325 C351-352	62-3150	CAP 2200pF CER 50V 5% NPO 0805 TA	PT2922 C220PC50J0805	0805
1	C72	60-0407	CAP 2200uF EL 35V 20% HT 16X32R BK	PT2381 C2200UE35MR	RES300P
1	C223	62-1313	CAP 220pF CER 50V 5% NPO 0603 TA	PT2923 C220PC50J0603	0603
6	C209 C234 C241 C254 C333-334	62-1301	CAP 22pF CER 50V 5% NPO 0603 TA	PT2658 C22PC50J0603	0603
8	C114-115 C125-126 C133 C135 C160-161	60-0402	CAP 22uF ELNP 25V 20% GP 6x11R 5LS TA	PT1084 C22UN25MR	REG200
16	C95-96 C118-120 C128 C131-132 C296-297 C300-301 C322-323 C326-327	62-1320	CAP 330pF CER 50V 5% COG 0603 TA	PT2941 C330PC50J0603	0603
1	C113	62-1306	CAP 330pF CER 50V 10% X7R 0603 TA	PT2653 C330PC50K0603	0603
7	C220 C270-273 C295 C345	62-1307	CAP 470pF CER 50V 10% X7R 0603 TA	PT2652 C470PC50K0603	0603
2	C129 C143	OMIT	OMIT CAP 470pF CER 50V 10% X7R 0603 TA (62-1307)	PT2777 C470PC50K06030	0603
8	D1 D23-25 D48-51	70-0017	DIO 1N4005 600V 1A AMMO TA	PT1455 D1N4005-R	RDB200
5	D6 D8 D21 D39-40	70-0113	DIO MMBD4148SE DUAL 75V 600mA SOT-23 TA	PT1326 D1N4148SE-S	SOT-23
8	D4-5 D14 D16 D19-20 D22 D41	70-0110	DIO 1N914 HIGH-SPEED SWITCHING SOT-23 T&R	PT1004 D1N914-S	SOT-23
3	D9 D12 D38	70-0154	DIO MMSZ5246BT1 ZENER 16V SOD-123 TA	PT2082 DMMSZ5246BT1-S	SOD-123
15	D2-3 D10-11 D13 D15 D17-18 D26-28 D34-37	70-3203	DIO RECT SIG 400V 1.0A SMA TA	PT2081 DS1G-S	DO-214AC/SMA
4	DS19 DS23 DS36-37	70-0114	DIS LTP3784 GRN DUAL 14 SEGMENT	MTB(12 DS700114	DS14SEG2
1	DS20	70-0115	DIS RED DUAL 7-SEG DIP	MTB(12 DS700115	DISPLAY18
1	DS8	70-0116	DIS GRN DUAL 7-SEG DIP	MTB(12 DS700116	DS7SEG-2
1	DS9	70-0117	DIS GRN 4 DIG CLOCK FREQ	MTB(12 DS700117	DS7SEG4
1	D7	70-0068	DIO RECT 40V 2A SCHOTTKY SS24 SM	PT2779 DSS24S	DO-214AA/SMB
1	F2	32-0024	FUSE 2.5A RESETTABLE FUSE POLYSWITCH BULK	PT1600 F2.5A320024	FUSE2
19	A3-4 A6-17 A41-45	NON-PART	NON-PART FIDUCIAL TARGET FOR AUTO INSERTION	PT2904 FIDUCIAL-AI	FIDUCIAL-AI
7	A1-2 A5 A46-49	NON-PART	NON-PART FIDUCIAL TARGET FOR XRAY	PT2905 FIDUCIAL-XRAY	FIDUCIAL-XRAY
1	H4	OMIT	OMIT HDR 14 PIN 0.1" SPC 2 X 7 VERT MALE (32-1083)	PT2127 HDR321083-O	HC72
1	J1	32-0089	CON JACK POWER BARREL JACK 2.5MM	PT2867 J320089	J320089
2	J2-3	32-0116	CON JACK SHIELDED 5 PIN DIN PCB MOUNT	PT2370 J320116	J320116
1	J4	32-0185	CON JACK USB SHIELDED I/O TYPE B RECEPTACLE	PT2877 J320185	J320185
1	J13	32-0206	CON JACK XLR R/A PCA A SERIES	PT1219 J320206	XLRF-1
7	J5-6 J9-12 J14	32-0214	CON JACK 1/4 PHONO FULL THREAD SLIM GND	PT3074 J320214	J320214
1	LBL1	30-0121	LABEL BARCODE AUTOINSERTABLE RAW	PT2790 LABEL300121	LABEL300121
14	DS27 DS30 DS32-34 DS39 DS41-43 DS47-48 DS50-51 DS61	70-3207	LED GREEN D1206 T&R	PT1902 LEDG703207	D1206



19	DS1-7 DS12-18 DS21-22 DS24-25 DS46	70-1920	LED RED/GRN WT/DIF SM 1210 TA	PT2428 LEDM701920	LED1210
30	DS10-11 DS26 DS29 DS35 DS38 DS40 DS44-45 DS49 DS54-59 DS62-75	70-3209	LED RED D1206 T&R	PT1901 LEDR703209	D1206
1	DS31	70-0079	LED WHITE D1206 TA	MB3-04 LEDW700079	D1206
4	DS28 DS52-53 DS60	70-3208	LED YEL 1206 TA	PT1900 LEDY703208	D1206
19	L1 L9 L17 L20-21 L25-26 L28-29 L33 L35 L39-42 L53 L56-57 L60	26-0000	IND FBD 600 OHM @ 100Hz 200mA 0603 TA	PT2728 LFB260000	0603
7	L34 L47 L52 L54-55 L58-59	OMIT	OMIT IND FBD 600 OHM @ 100Hz 200mA 0603 TA (26-0000)	PT2985 LFB260000-0	0603
8	L8 L16 L18-19 L38 L43-44 L49	26-0001	IND FBD 2.5K OHM @ 100Hz, 50mA 0603 TA	PT2729 LFB260001	0603
15	L2-7 L12 L15 L23 L32 L45-46 L48 L50-51	26-0215	IND FBD 70 OHM @ 100MHz RIC200 TA	PT1262 LFB260215	RIC200
1	L27	OMIT	OMIT IND FBD 70 OHM @ 100MHz RIC200 TA (26-0215)	PT2678 LFB260215-0	RIC200
1	L36	26-0005	IND 100uH SM SHIELDED DRUM T&R	PT3043 LI260005	DS1976
1	GP1	NON-PART	NON-PART MECCA GND/PWR TIE POINT 4 POS	PT2482 MECCA4	MECCA4
31	MH3-21 MH25-35 MH37	NON-PART	NON-PART, MOUNTING HOLE, 0.130" NON-PLATED, #4	PT1242 MH130	MH130
3	MH22-24	NON-PART	NON-PART MOUNTING HOLE 0.156" NON-PLATED #6	PT3000 MH156	MH156
2	MH1-2	NON-PART	NON-PART TOOLING PIN HOLE 156MIL HOLE	PT2794 MH156-TOOL	MH156-TOOL
1	MH36	NON-PART	NON-PART MH 0.250" NON-PLATED NO KO CLR	PT2490 MH250-1	MH250-1
2	MP1 MP3	NON-PART	NON-PART SMT HEATSINK DIMPLE 300P 156H #6	PT2816 MP300H156-HSDMP	MP300H156-HSDMP
2	J7-8	32-0177	CON PLUG XLR R/A PCA A SERIES	PT2947 P320177	XLRM-2
1	H1	32-0194	PLUG COMPACT FLASH TYPE II SM	PT3024 P320194	P-AMP1470101
1	PA3	NON-PART	NON-PART PD ARY 12 PN 0.1"SPC 0.039" HLE	PT2775 PA1X12-100-039	PA1X12-100-039
1	PA4	NON-PART	NON-PART PAD ARRAY 6 PN 0.1"SPC 0.039" HLE	PT2134 PA1X6-100-039	PA1X6-100-039
1	P4	NON-PART	NON-PART PD ARY 20 PN 2 X 10 0.100" SC 0.039" HLE	PT2965 PA2X10-100-039	PA2X10-100-039
1	P3	NON-PART	NON-PART PAD ARRAY 13x2 0.100CTR 0.039HLE	MB2-24 PA2X13-100-039	HC132
18	Q1-3 Q5-8 Q10-12 Q15 Q19-20 Q27-30 Q33	70-1058	XSTR 2N3904 NPN SOT-23 TA	PT1203 Q2N3904-S	SOT-23
1	Q9	70-1059	XSTR 2N3906 PNP SOT-23 SM TA	PT1057 Q2N3906-S	SOT-23
2	Q13 Q25	70-1155	XSTR 2N6714 NPN MEDIUM POWER TA	PT1595 Q2N6714	TO92(EBC)-V
2	Q24 Q26	70-1156	XSTR 2N6726 PNP MED POWER TO92(EBC)-V TA	PT1534 Q2N6726	TO92(EBC)-V
1	Q14	OMIT	OMIT XSTR NDS336P PNP MFET SOT-23 (70-3199)	PT3041 QNDS336P-SO	SUPERSOT-3
1	Q4	70-1052	XSTR TIP122 NPN 5A 65W BK	PT2465 QTIP122	TO220AB(BCE)-V
67	L10-11 L13-14 L37 R20 R24 R26 R33 R38 R94 R96 R106 R117-118 R120-122 R128 R131 R135 R143 R151 R159 R169-170 R172-175 R179-181 R207-208 R295 R317 R323 R325 R339-340 R342-347 R358-361 R380-381 R383 R398-399 R403-404 R406-407 R411-412 R414 R418 R422 R428 R439	50-1300	RES 0 5% 1/16W SM 0603 TA	PT2508 R0-B5-0603	0603
20	R36 R46 R60 R116 R138 R142 R219-220 R254-255 R302-303 R408-410 R413 R415-417 R429	OMIT	OMIT RES 0 5% 1/16W SM 0603 TA (50-1300)	PT2509 R0-B5-06030	0603

19	R283-284 R290-291 R304-305 R316 R321 R330-331 R336-337 R348-349 R356-357 R430 R437-438	52-1314	RES 1.5K 1% 1/16W SM 0603 TA	PT2551 R1.5KB1-0603	0603
1	R215	52-1315	RES 1.87K 1% 1/16W SM 0603 TA	PT2552 R1.87KB1-0603	0603
79	R5 R7-8 R12 R16 R18-19 R27 R29 R34 R37 R43 R48-58 R70-72 R74 R81 R87-88 R91 R110 R119 R125-127 R132-133 R137 R139-140 R146-147 R157-158 R164 R166-167 R171 R176 R182-190 R194-197 R209-212 R223-224 R226 R232-235 R248 R388-389 R394-395	52-1304	RES 100 1% 1/16W SM 0603 TA	PT2512 R100-B1-0603	0603
1	R320	52-1360	RES 100K 1% 1/16W SM 0603 TA	PT2613 R100KB1-0603	0603
7	R136 R297 R364-365 R369-370 R396	50-1301	RES 10 5% 1/16W SM 0603 TA	PT2516 R10-B5-0603	0603
3	R177 R322 R400	OMIT	OMIT RES 10 OHM 5% 1/16W SM 0603 TA (50-1301)	PT2517 R10-B5-0603O	0603
37	R11 R30-31 R42 R44-45 R76-77 R80 R89-90 R100-101 R111 R113-115 R206 R221 R229 R236-243 R252-253 R258-259 R270-271 R362 R366 R392	52-1338	RES 10K 1% 1/16W SM 0603 TA	PT2584 R10KB1-0603	0603
2	R150 R405	OMIT	OMIT RES 10K 1% 1/16W SM 0603 TA (52-1338)	PT2628 R10KB1-0603O	0603
1	R228	52-1342	RES 13.3K 1% 1/16W SM 0603 TA	PT2594 R13.3KB1-0603	0603
1	R402	OMIT	OMIT RES 150K 1% 1/16W SM 0603 TA (52-1362)	PT3042 R150KB1-0603O	0603
7	R13 R324 R397 R423 R425-427	52-1344	RES 15K 1% 1/16W SM 0603 TA	PT2596 R15KB1-0603	0603
3	R148 R214 R421	52-1305	RES 169 1% 1/16W SM 0603 TA	PT2513 R169-B1-0603	0603
1	R230	52-1345	RES 17.4K 1% 1/16W SM 0603 TA	PT2597 R17.4KB1-0603	0603
6	R338 R368 R386-387 R440-441	52-1313	RES 1K 1% 1/16W SM 0603 TA	PT2550 R1KB1-0603	0603
2	R6 R47	52-1372	RES 1M 1% 1/16W SM 0603 TA	PT2625 R1MB1-0603	0603
2	R22 R112	52-1317	RES 2.21K 1% 1/16W SM 0603 TA	PT2555 R2.21KB1-0603	0603
2	R264 R276	52-1319	RES 2.67K 1% 1/16W SM 0603 TA	PT2557 R2.67KB1-0603	0603
13	R17 R28 R32 R59 R66 R78-79 R217-218 R314 R341 R363 R424	52-1306	RES 200 1% 1/16W SM 0603 TA	PT2514 R200-B1-0603	0603
7	R40 R431-436	52-1300	RES 20 1% 1/16W SM 0603 TA	PT2507 R20-B1-0603	0603
2	R108 R231	52-1346	RES 20K 1% 1/16W SM 0603 TA	PT2598 R20KB1-0603	0603
1	R67	52-1347	RES 22.1K 1% 1/16W SM 0603 TA	PT2599 R22.1KB1-0603	0603
8	R193 R246 R315 R372-375 R393	52-1316	RES 2K 1% 1/16W SM 0603 TA	PT2553 R2KB1-0603	0603
8	R279-280 R285-286 R326-327 R332-333	52-1321	RES 3.01K 1% 1/16W SM 0603 TA	PT2559 R3.01KB1-0603	0603
5	R262 R266 R274 R278 R300	52-1322	RES 3.16K 1% 1/16W SM 0603 TA	PT2560 R3.16KB1-0603	0603
3	R225 R263 R275	52-1323	RES 3.24K 1% 1/16W SM 0603 TA	PT2561 R3.24KB1-0603	0603
9	R281-282 R287-288 R328-329 R334-335 R391	52-1324	RES 3.32K 1% 1/16W SM 0603 TA	PT2562 R3.32KB1-0603	0603
1	R130	52-1352	RES 30.1K 1% 1/16W SM 0603 TA	PT2604 R30.1KB1-0603	0603
2	R367 R371	52-1353	RES 32.4K 1% 1/16W SM 0603 TA	PT2605 R32.4KB1-0603	0603

10	R299 R306-308 R312-313 R350-351 R354-355	52-1307	RES 332 1% 1/16W SM 0603 TA	PT2543 R332-B1-0603	0603
10	R14 R23 R98-99 R102-105 R107 R109	52-1301	RES 39.2 1% 1/16W SM 0603 TA	PT2515 R39.2-B1-0603	0603
1	R289	52-1355	RES 39.2K 1% 1/16W SM 0603 TA	PT2608 R39.2KB1-0603	0603
4	R260-261 R272-273	52-1327	RES 4.53K 1% 1/16W SM 0603 TA	PT2565 R4.53KB1-0603	0603
14	R93 R97 R123-124 R152-153 R160 R178 R216 R292 R294 R384-385 R390	52-1328	RES 4.64K 1% 1/16W SM 0603 TA	PT2568 R4.64KB1-0603	0603
25	R1-4 R35 R61-65 R202-205 R222 R244-245 R249-251 R293 R296 R298 R311 R382	52-1329	RES 4.99K 1% 1/16W SM 0603 TA	PT2566 R4.99KB1-0603	0603
5	R192 R376-377 R442-443	52-1368	RES 475K 1% 1/16W SM 0603 TA	PT2621 R475KB1-0603	0603
27	R9-10 R21 R25 R39 R41 R68-69 R82-86 R92 R95 R168 R191 R198-201 R213 R301 R309-310 R352-353	52-1308	RES 499 1% 1/16W SM 0603 TA	PT2545 R499-B1-0603	0603
6	R144-145 R155-156 R163 R165	52-1330	RES 5.49K 1% 1/16W SM 0603 TA	PT2567 R5.49KB1-0603	0603
2	R265 R277	52-1331	RES 5.76K 1% 1/16W SM 0603 TA	PT2576 R5.76KB1-0603	0603
4	R257 R269 R378-379	52-1332	RES 6.04K 1% 1/16W SM 0603 TA	PT2577 R6.04KB1-0603	0603
2	R318-319	52-1333	RES 6.81K 1% 1/16W SM 0603 TA	PT2578 R6.81KB1-0603	0603
4	R247 R256 R267-268	52-1303	RES 60.4 1% 1/16W SM 0603 TA	PT2511 R60.4-B1-0603	0603
2	R419-420	52-1309	RES 619 1% 1/16W SM 0603 TA	PT2546 R619-B1-0603	0603
8	R73 R75 R134 R141 R149 R154 R161-162	52-1312	RES 732 1% 1/16W SM 0603 TA	PT2549 R732-B1-0603	0603
1	R15	52-1359	RES 75K 1% 1/16W SM 0603 TA	PT2612 R75KB1-0603	0603
2	R129 R227	52-1337	RES 9.09K 1% 1/16W SM 0603 TA	PT2583 R9.09KB1-0603	0603
1	RC3	32-3226	RBN CBL 12 COND. 0.1 SPC 2" LONG	PT2708 RC12-323226	PA1X12-100-039
1	RC2	32-1280	RIBBON CABLE 2 x 10 8" M/M 0.1 CTR 26AWG	MB(8-0 RC20-321280	RC321275
1	RC1	32-1281	RIBBON CABLE 13x2 8" M/M 0.1 CTR 26AWG	MB(8-0 RC26-321281	RC321278
1	RC4	32-1073	RBN CBL 6 COND 0.1 SP 4" LONG	PT2346 RC6-321073	PA1X6-100-039
5	SC1-5	34-0036	SWITCH CAP BLACK ROUND 6.2mm X 9mm	PT2506 SC340036	SC340036
1	SW5	44-0013	SWITCH PWR ROCKER DPST DA250VAC	PT2394 SW440013	SW440013-AL1
5	SW55 SW57-59 SW110	44-0050	SWITCH DPDT MINI IN-OUT 6 PIN E-SWITCH	PT1256 SW440050	SW440050
49	SW46 SW62-109	OMIT	OMIT SWITCH 6x6mm SPST 50mA 12VDC SMT TA (44-0063)	MB3-04 SW440063-O	SW440063
49	SW1 SW3-4 SW6-36 SW38-45 SW47-50 SW56 SW60-61	44-0077	SWITCH SPST TACT RADIAL	PT1612 SW440077	SW440077
6	SW2 SW37 SW51-54	44-0188	SWITCH ENCODER 12mm 24 DTNT 20mm SHFT VERT	PT2661 SW440188	SW440188
1	U31	72-0023	IC DRAM 1M x16 50ns CMOS SM TSOPII	PT2715 U1M16D50T	TSOPII50-21X12
1	U9	72-0099	IC K4S641632H-TC(L)7.5 SDRAM	PT2981 U64M4M16SD7-T	TSOP2-54
1	U62	70-2146	IC, 6N138, OPTO ISOLATOR, DIP8-300-S	PT1492 U6N138-S1	DIP8-300-S
1	U36	72-5426	IC, 74AC04, HEX INVERTER, SO14, T&R	PT1325 U74AC04-S	SO14
3	U15 U29 U41	72-1267	IC 74AC245 OCTAL BUS TRANCEIVER SO20W	PT1945 U74AC245-S	SO20W
1	U10	72-5435	IC 74AC32 QUAD 2-INPUT POS-OR SO14	PT1868 U74AC32-S	SO14
7	U12 U14 U18-21 U23	72-1263	IC, 74HC574, FLIP-FLOP, EDGE TRIGGERED, OCTAL, SO20W, T&R	PT1352 U74HC574-S	SO20W
4	U25 U28 U30 U32	72-0020	IC, 74LCX244, LV, OCTAL BUFFER LINE DRV W/3-STATE OUTPUTS, SO20W, T&R	PT1798 U74LCX244-S	SO20W
1	U13	72-5437	IC 74VHC273 FLIP-FLOP OCTAL-D SO20W T&R	PT1909 U74VHC273-S	SO20W
3	U2 U8 U27	72-5433	IC AUDIO DNA ATMEL QFP-144	PT2374 UAUDIODNA	QFP144-20X20
2	U3 U6	72-1477	IC CS4272 24-BIT STEREO CODEC	PT2931 UCS4272-T	TSSOP28
1	U34	70-0118	V-REG L7812CD2T +12V 1A TA	PT2993 UL7812CD2T-S	TO263 (D2PAK)
1	U35	70-0119	V-REG LM7912CD2T -12V 1A TA	PT2994 UL7912CD2T-S	TO263 (D2PAK)
2	U7 U16	70-0081	V-REG LM1117DTX ADJ-V TA TO-252 (DPAK)	PT2950 ULM1117DTX-ADJ-S	TO252 (DPAK)
1	U37	70-0063	V-REG LM2575S-ADJ SWITCHING REG 1A TO-263(5)	PT2739 ULM2575S-ADJ	TO-263(5)
1	U1	72-1489	IC NCP304L VOLTAGE DETECTOR SC-82AB	PT2660 UNCP304L	SC-82AB

				050449D0.pps			
21	U17 U22 U26 U39-40 U42-44 U46 U48-49 U51-60	72-1480	IC NJM4580 DUAL OP-AMP SO8		PT1374 UNJM4580-S	SO8	
1	U5	72-0113-00V1	IC FLASH 32MBIT MIRROR BIT GNX4 V1 TSOP48		MT2-10 UP720113	TSOP48	
1	U24	70-3169	IC SFH9201 REFLECTIVE INTERRUPTER SM SO6		PT2333 USFH9201-S	SO6-1	
1	U11	72-0094	IC TMS320VC5409APGE DSP PROCESSOR SM		MRC070 UTMS320VC5509APG E-Q	QFP144-20X20	
1	U38	70-0103	IC ADJ 1.2V - 5.5V 200 mA REGULATOR SOT-26		PT3022 UTPS79301-S	SOT-26	
1	U45	72-0119	IC TUSB2036 USB 2/3 PORT HUB		MB2-04 UTUSB2036-Q	PQFP32-7X7	
1	U4	72-0075	IC TUSB3200A USB STREAMING CONTROLLER TA		PT2958 UTUSB3200A-Q	QFP52-10X10	
2	VR2 VR7	40-2162	POT 20K B DUAL 14mm ROT 25mm D-SHAFT		PT2476 VR20K402162	VR14-25DH	
1	VR1	40-2164	POT 20K B 9mm ROT 25mm D-SHAFT		PT1986 VR20K402164	VR9-25DH	
1	Y1	76-0201	XTAL, 12.000MHz, METAL CAN, SURFACE MOUNT, T&R		PT1538 Y12.000M760201	XTAL2-V	
1	Y2	76-0007	XTAL 6.000 MHz 18pF MTL CAN SM TA		PT2906 Y6.000M760007	XTAL2-V	