

REV	Eng	Date:	Revision Description	ECN#
A				
B				
C				
D				
E				
F				

### INDEX


SHEET	DESCRIPTION

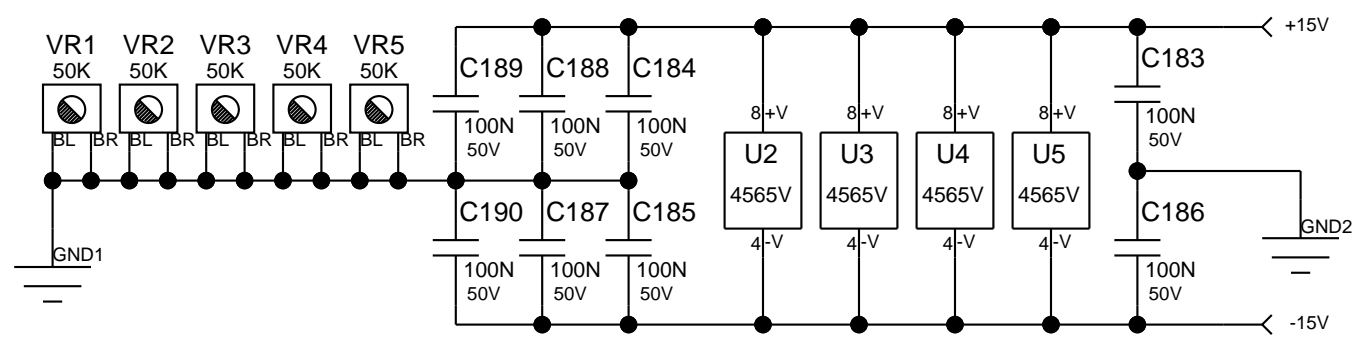
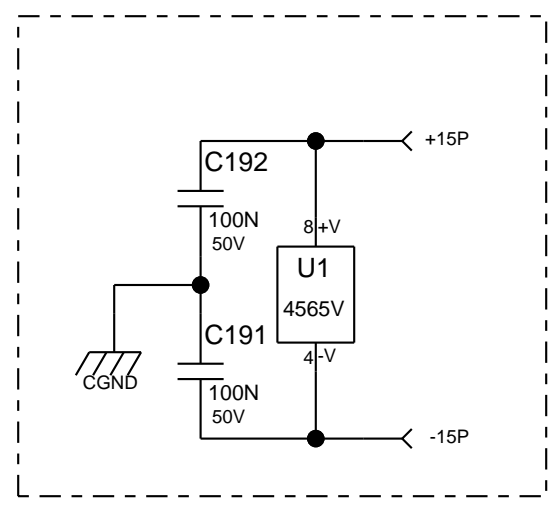
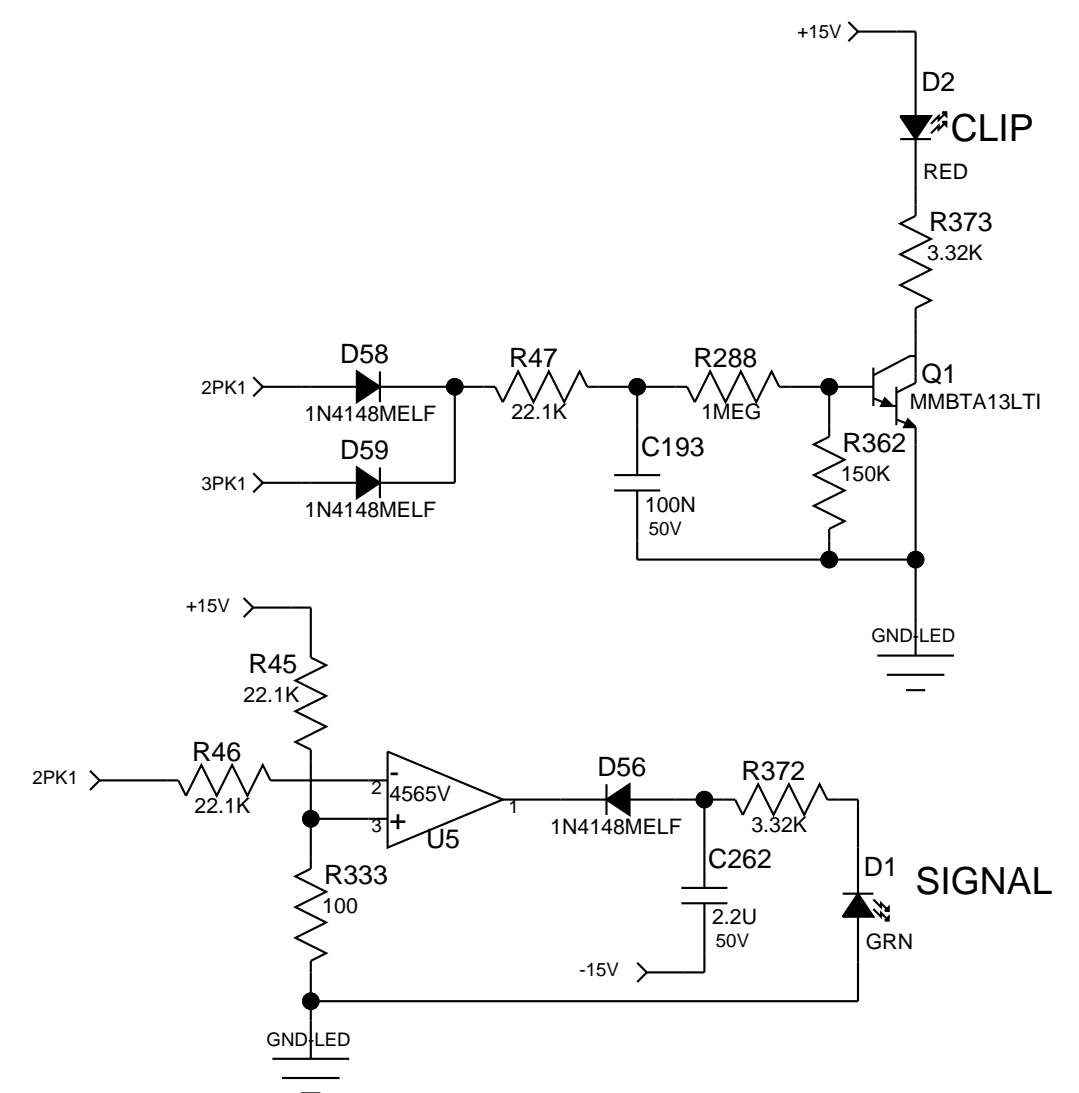
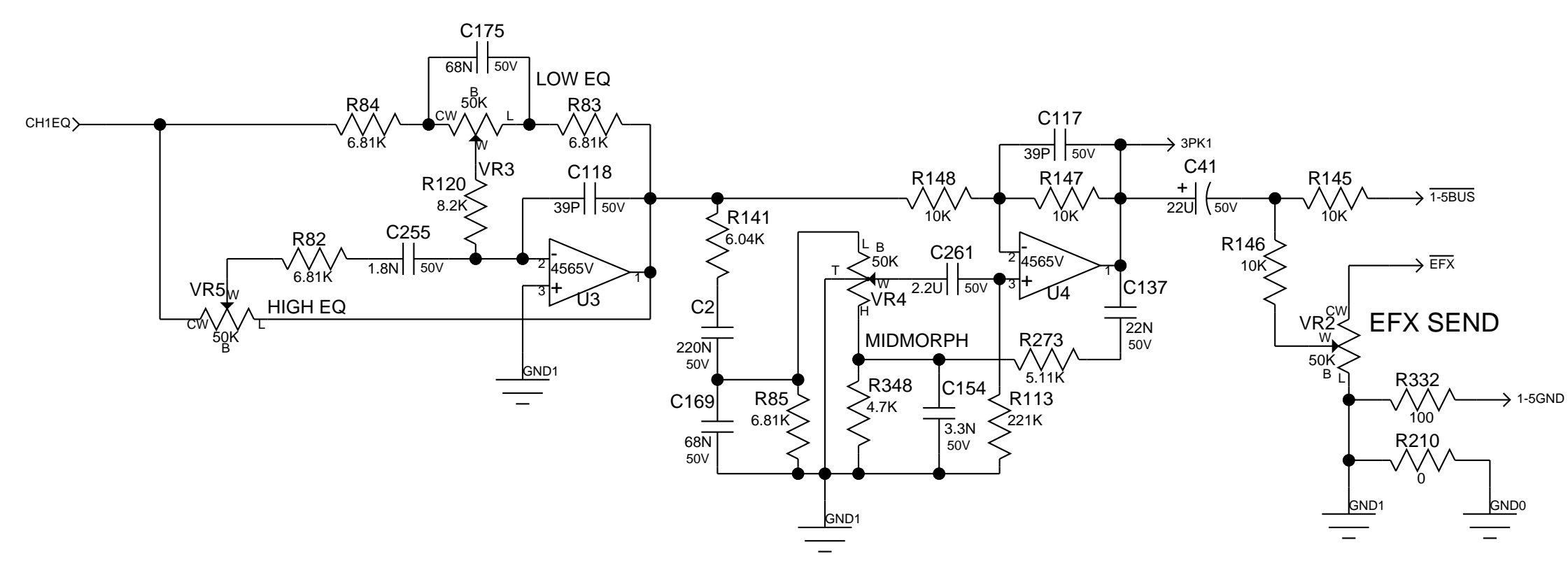
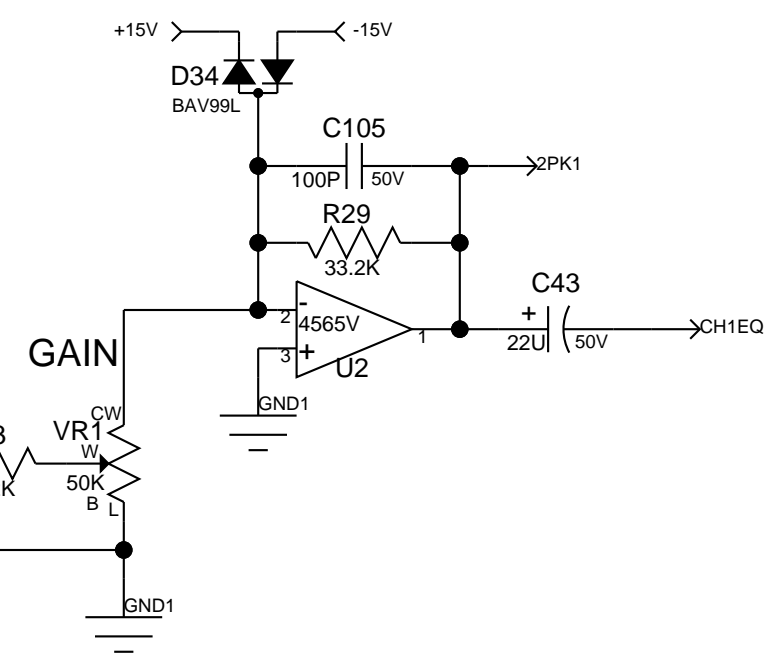
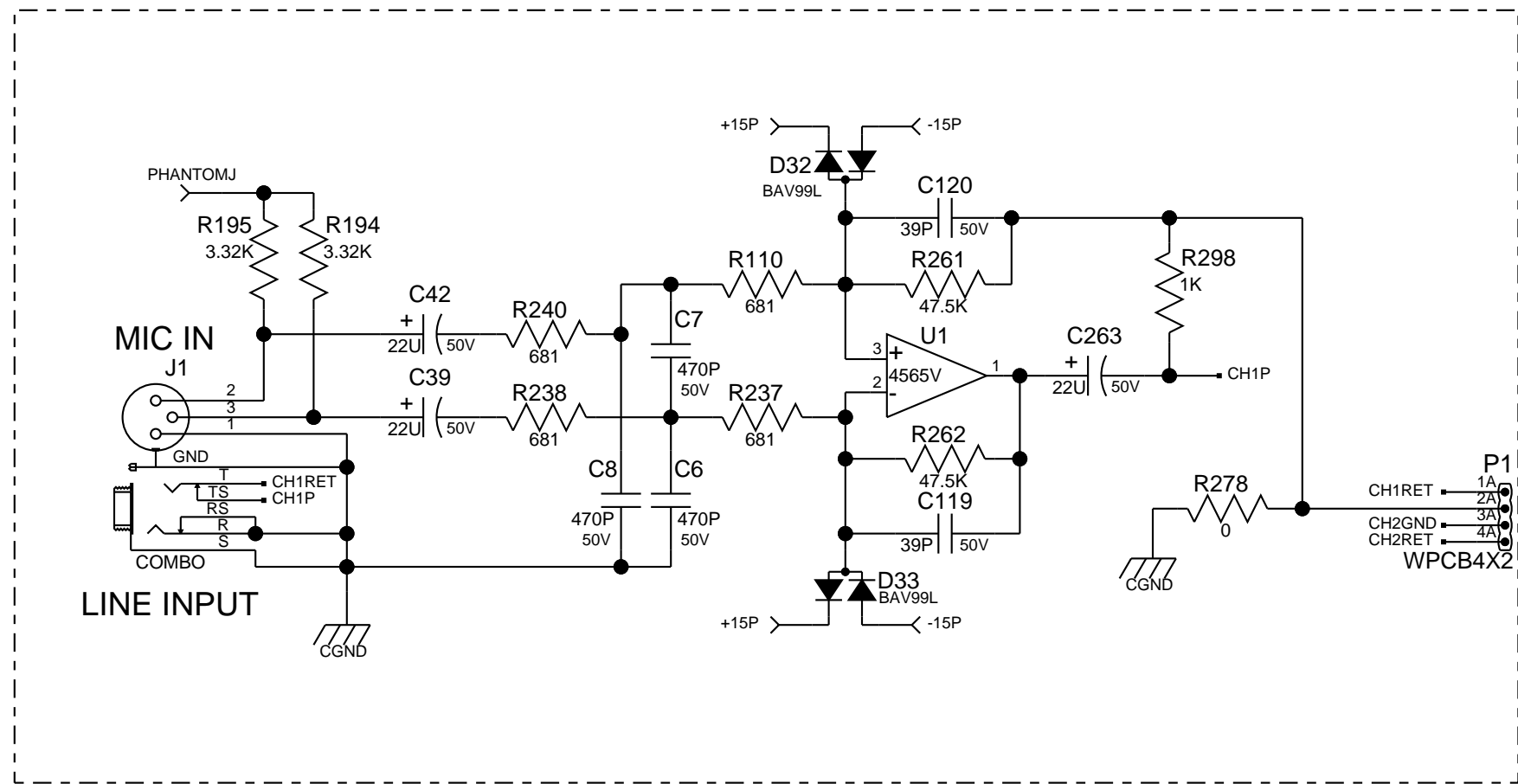
Note: All thru hole Resistors are 1/4 Watt unless otherwise indicated.  
 All SMT 1206 Resistors are 1/4 Watt.  
 All SMT 0805 Resistors are 1/10 Watt.  
 Note Capacitor Values are indicated as Follows:  
 val P = pF (picoFarads) val \* 10 exp-12  
 val N = nF (nanoFarads) val \* 10 exp-9 (1N=1000pF, 100N=0.1uF)  
 val U = uF (microFarads) val \* 10 exp-6

Patents:

Copyright Peavey Electronics Corporation 2008.

\*Company Proprietary Information\*

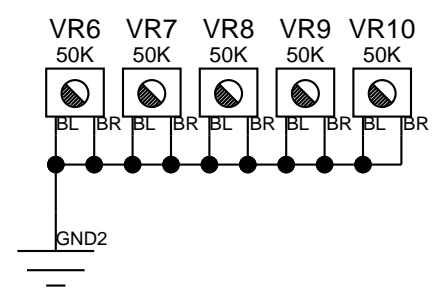
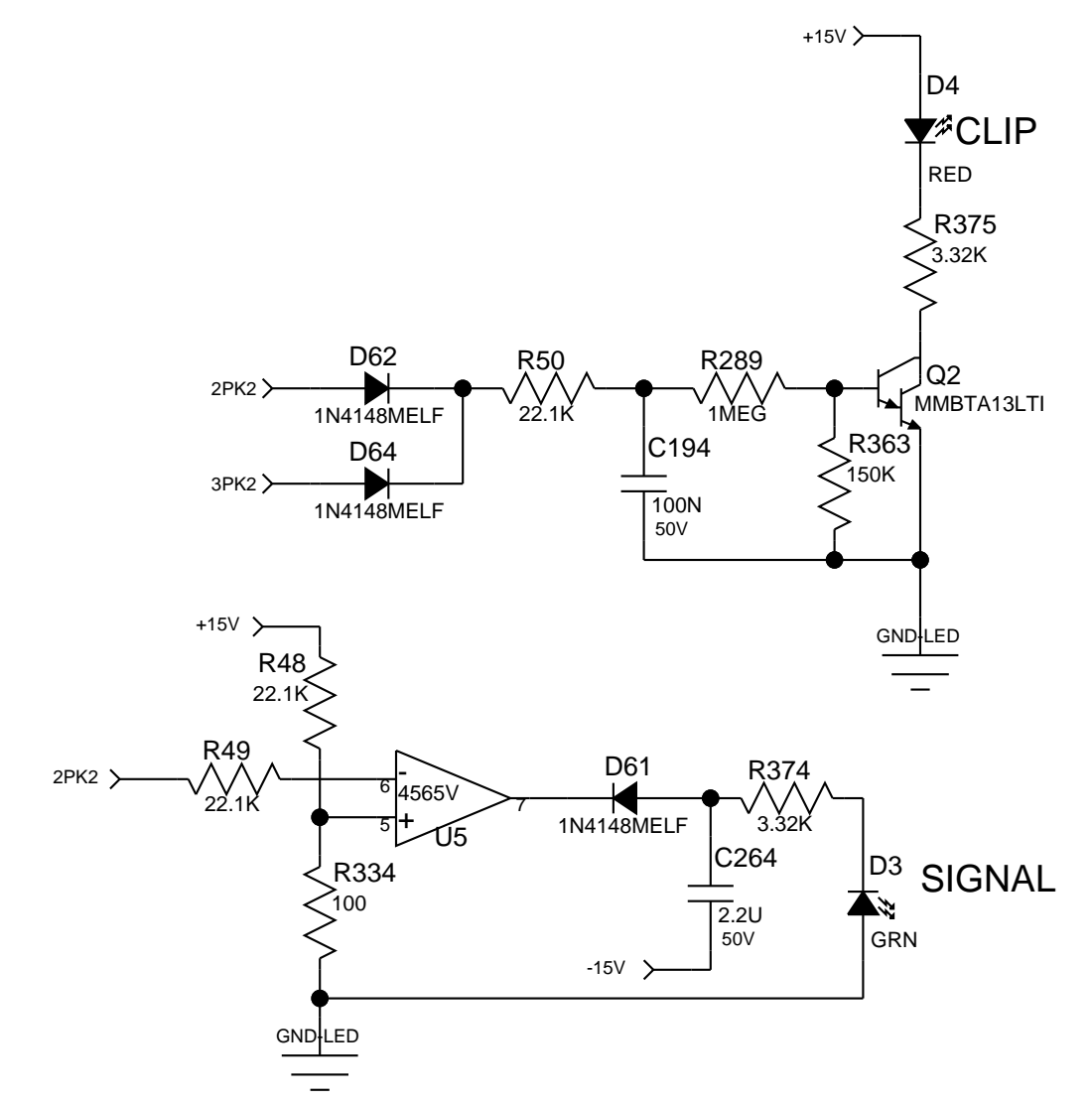
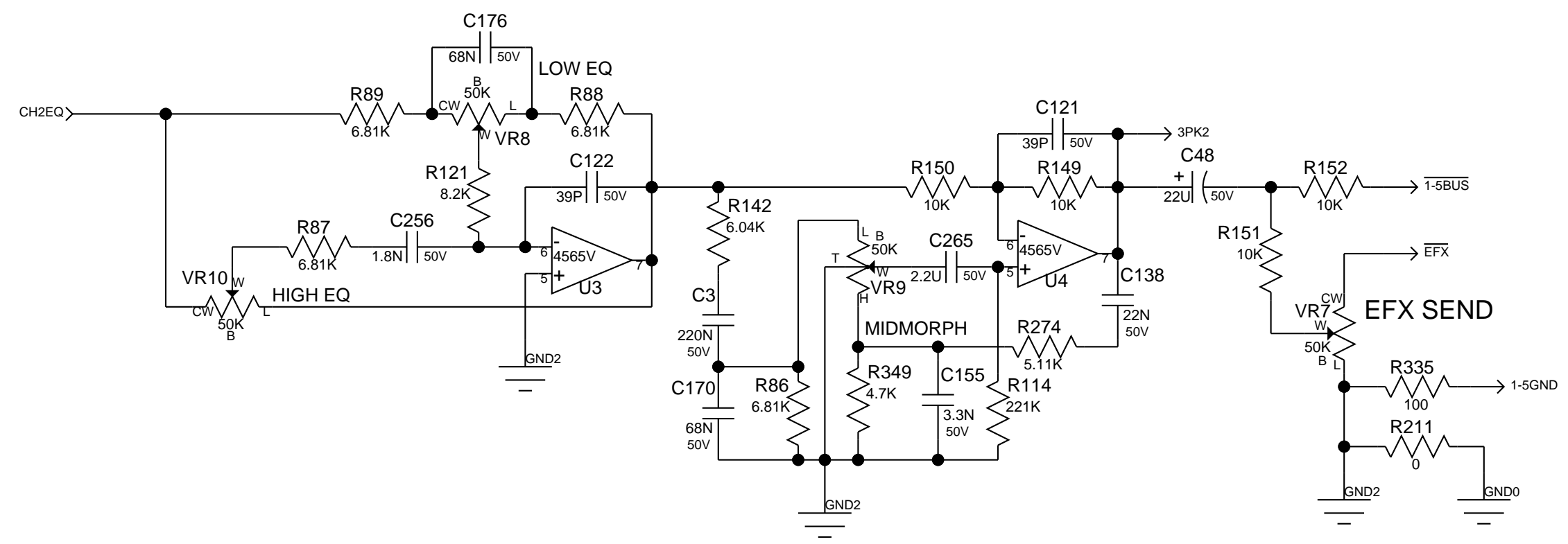
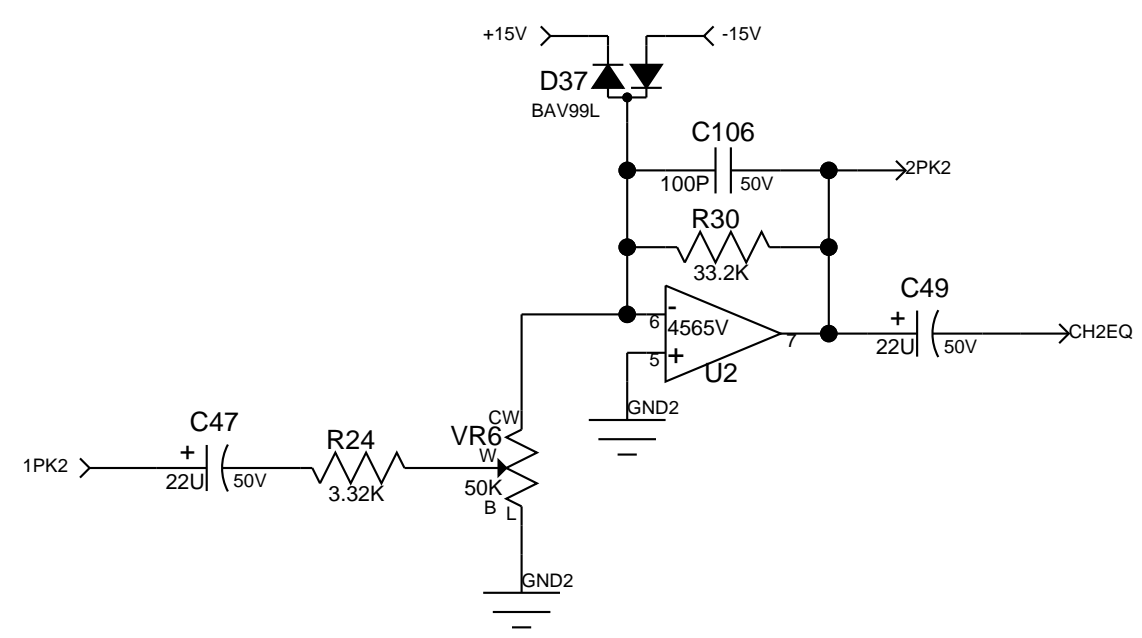
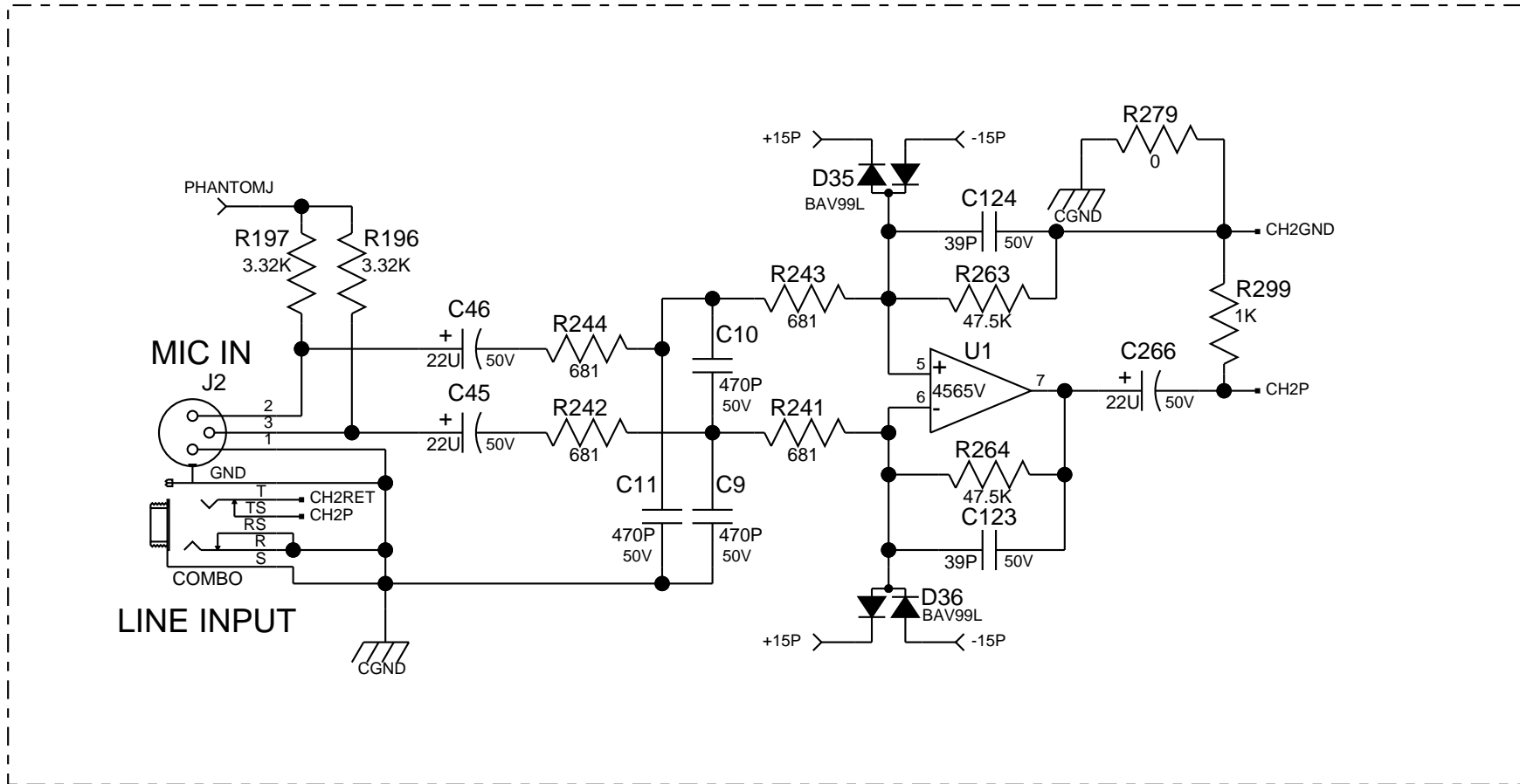
 Peavey Electronics Corp. P. O. Box 2898 Meridian, MS 39301		
Product:		PVI6500
Project Number:		
Eng: JMH	Release Date:	
C Sheet 1	of 11	Saved: 7-19-2011_14:16



**PEAVEY**  
Peavey Electronics Corp.  
P. O. Box 2898  
Meridian, MS 39301

Title: **PVI6500**  
Sheet Title: **CHANNEL 1**

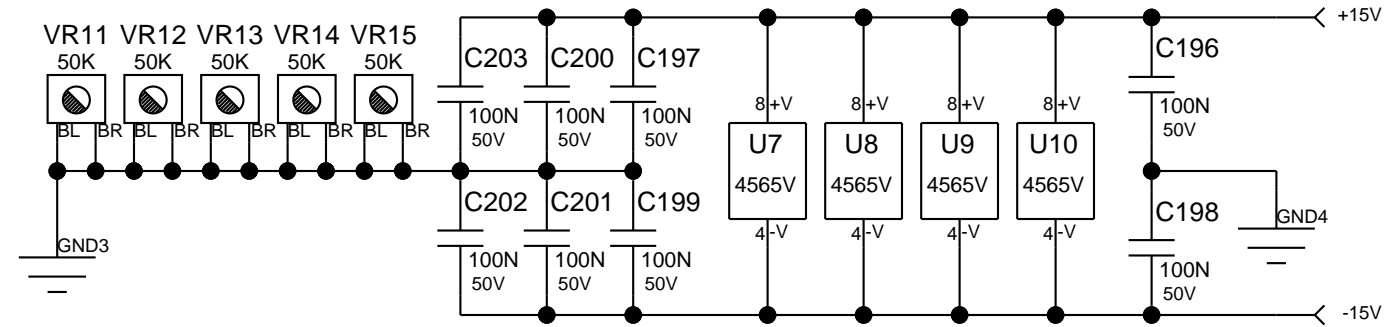
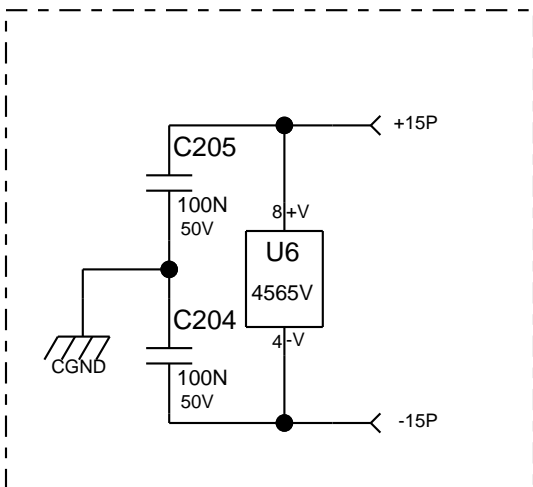
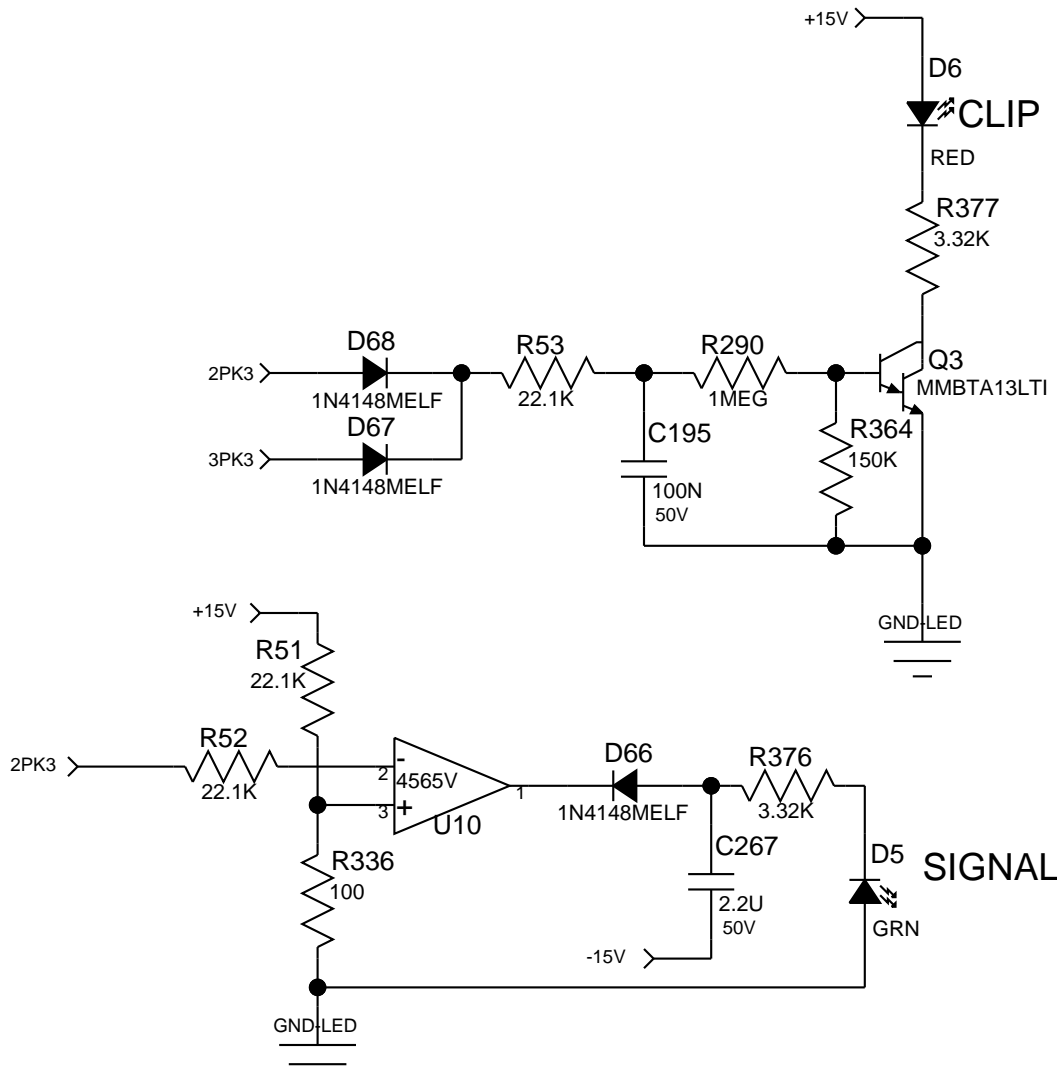
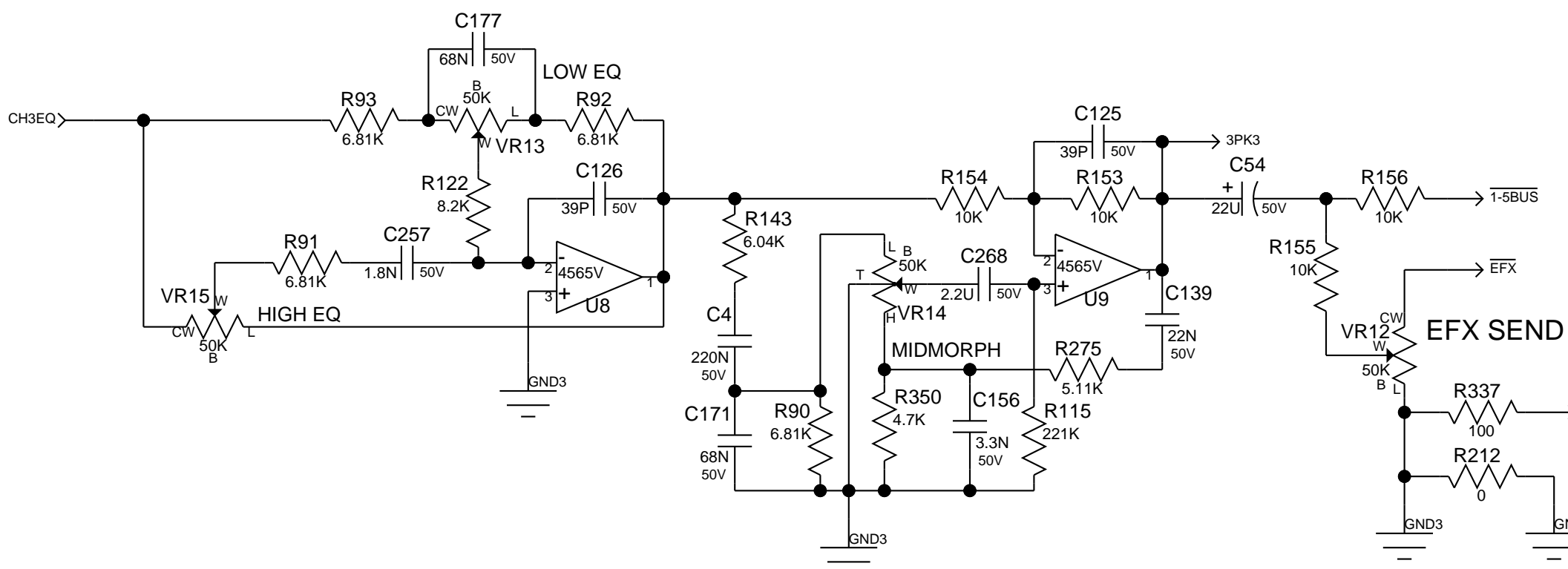
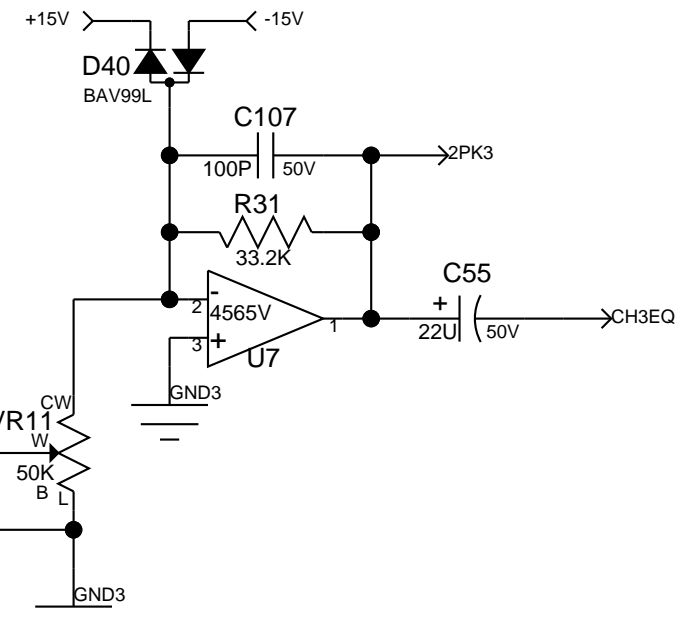
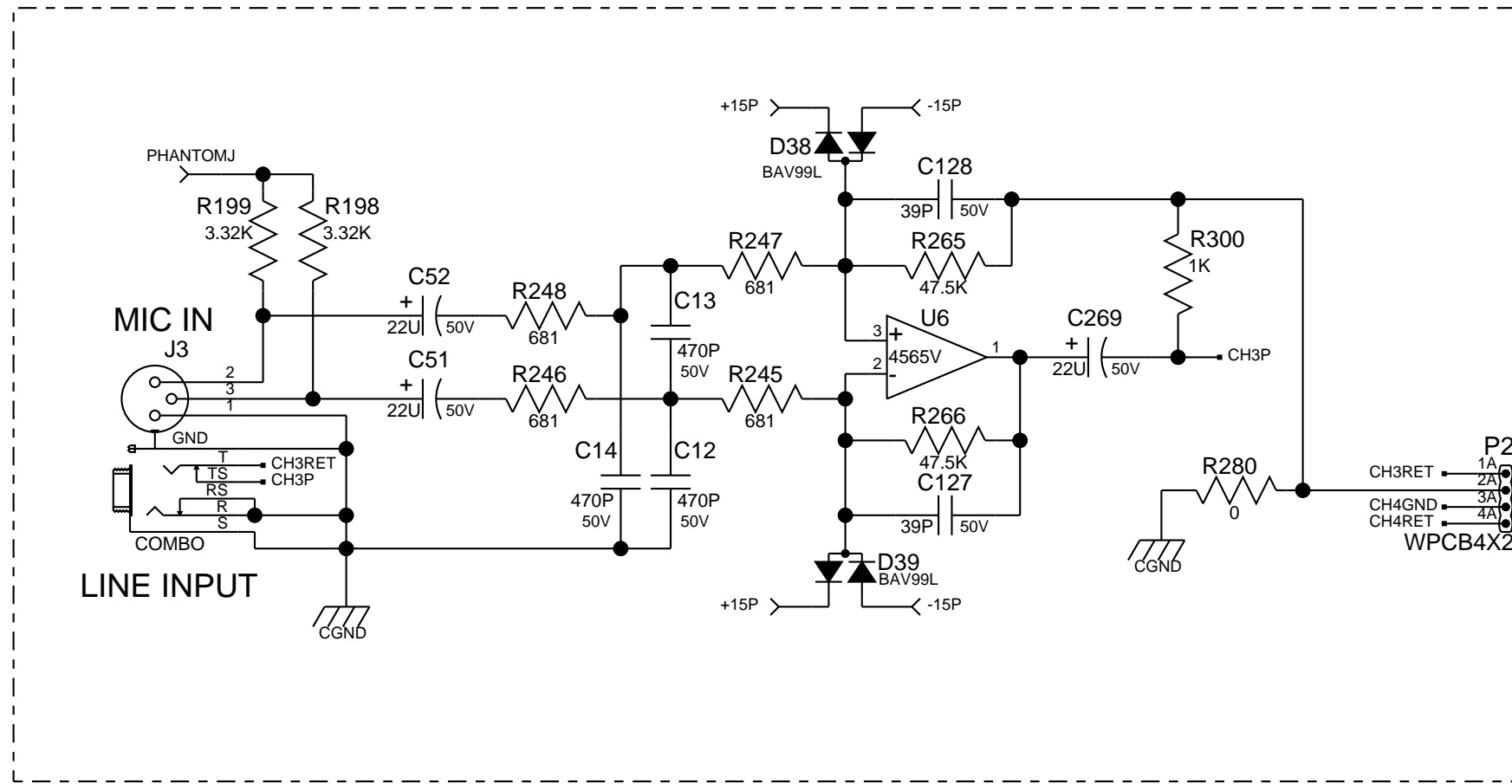
C Sheet 2 of 11 Date: 7-19-2011\_14:16



**PEAVEY**  
 Peavey Electronics Corp.  
 P. O. Box 2898  
 Meridian, MS 39301

Title: PVI6500  
 Sheet Title: CHANNEL 2

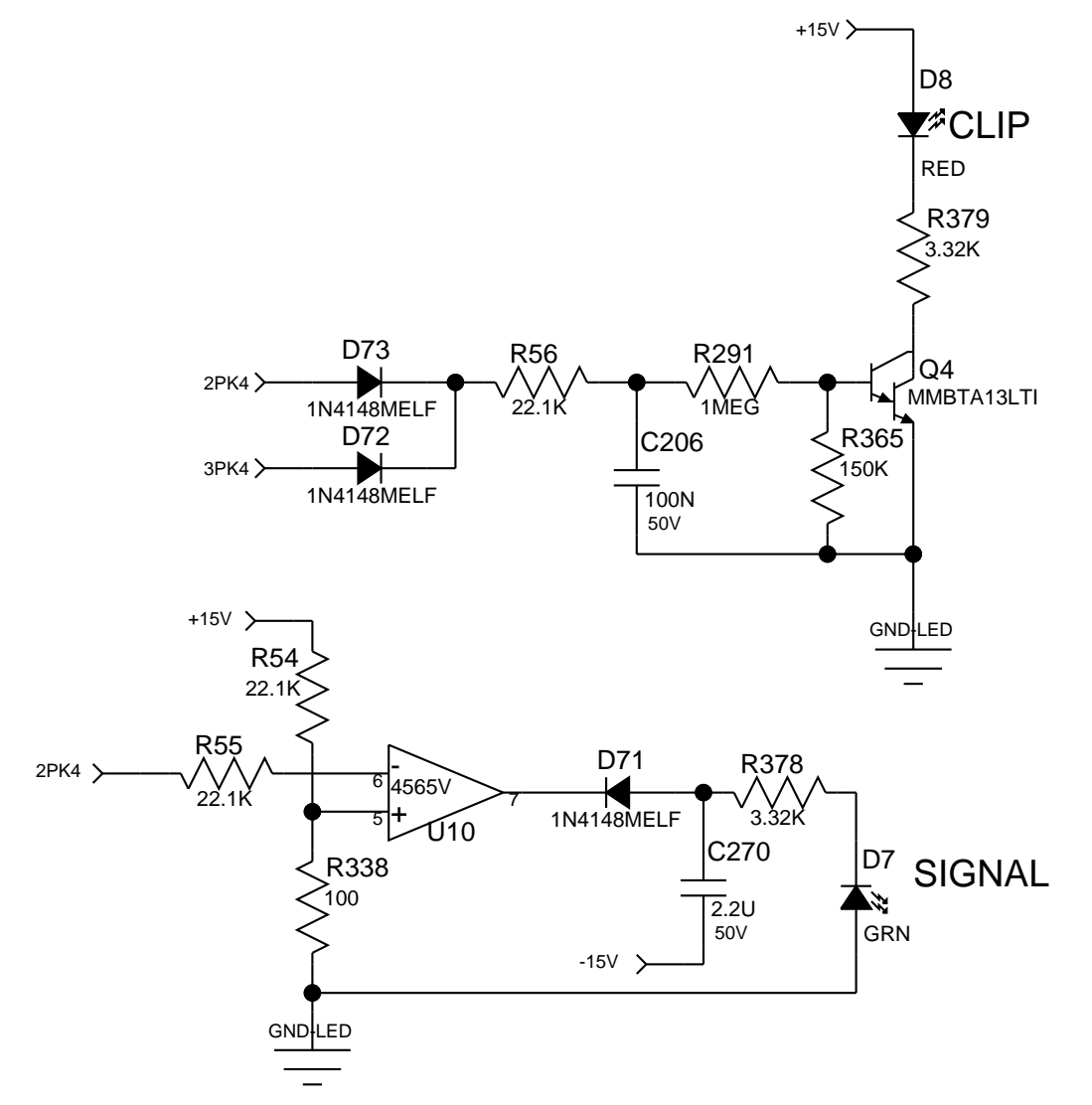
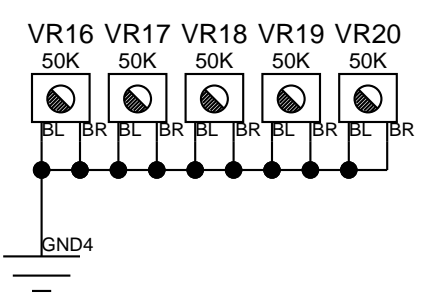
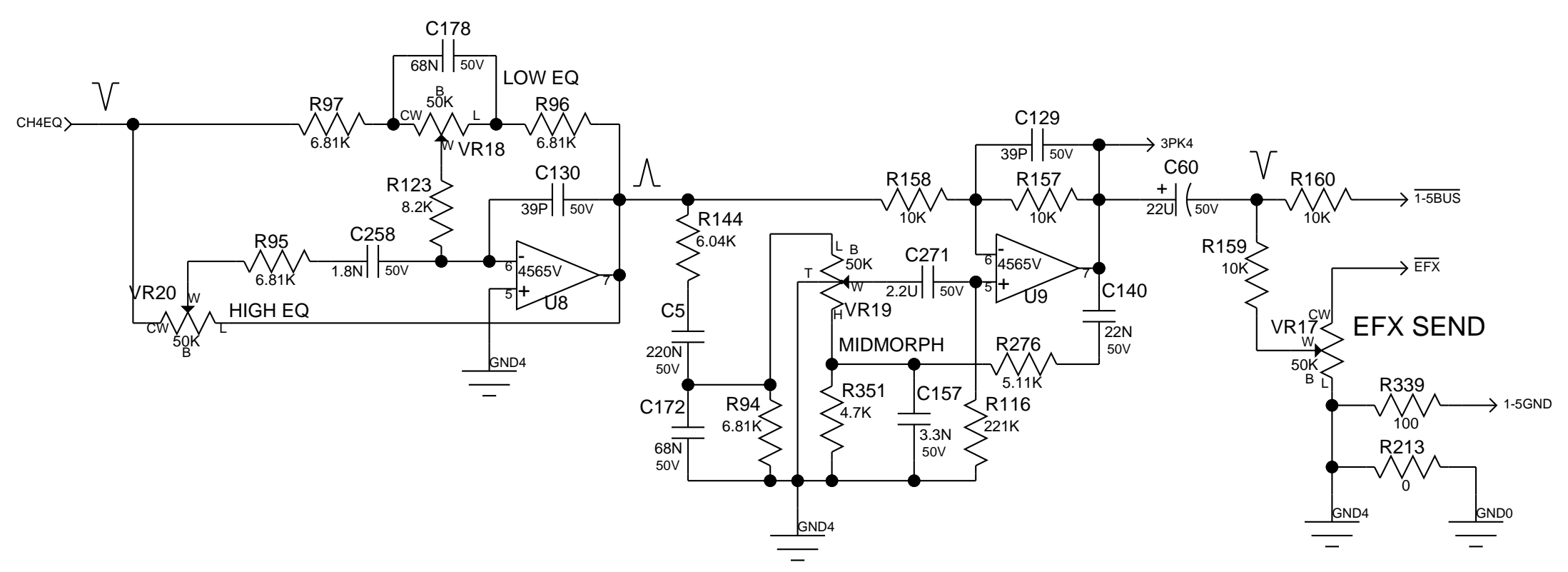
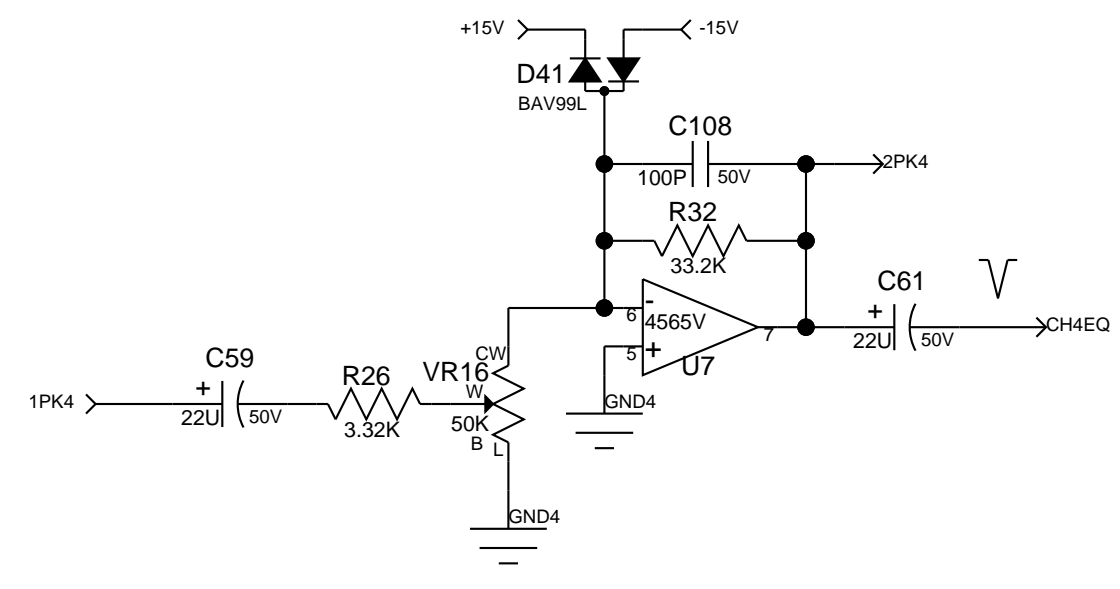
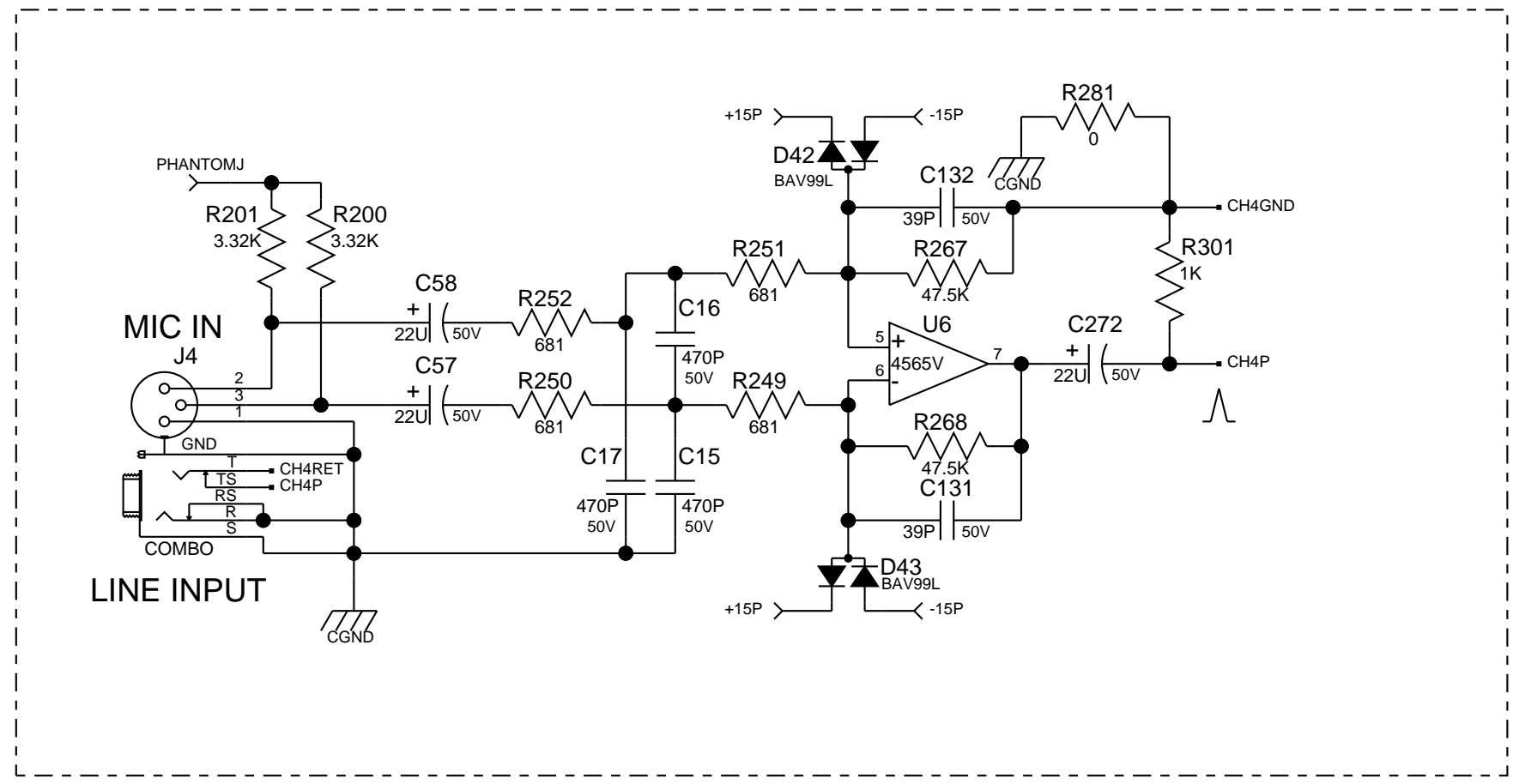
C Sheet 3 of 11 Date: 7-19-2011\_14:16



**PEAVEY**  
 Peavey Electronics Corp.  
 P. O. Box 2898  
 Meridian, MS 39301

Title: PVI6500  
 Sheet Title: CHANNEL 3

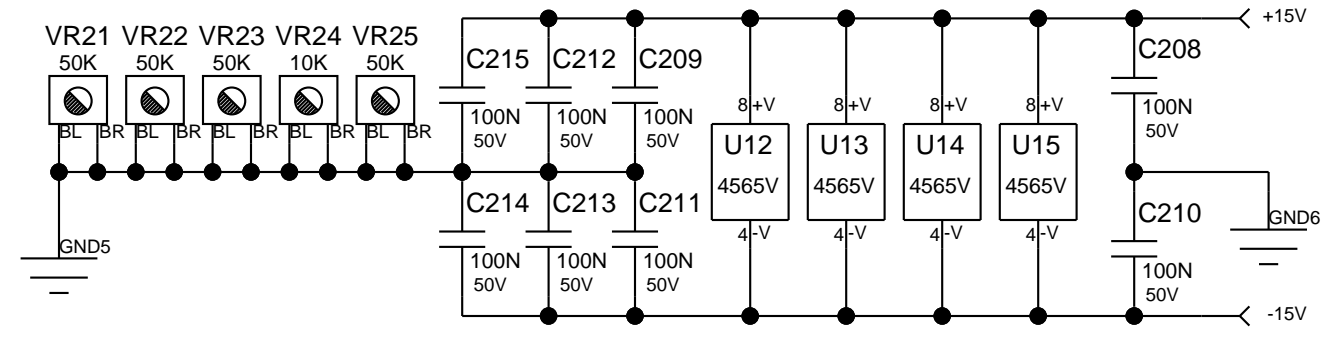
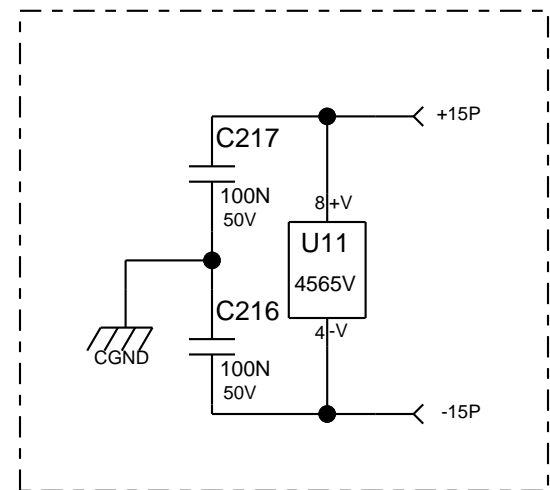
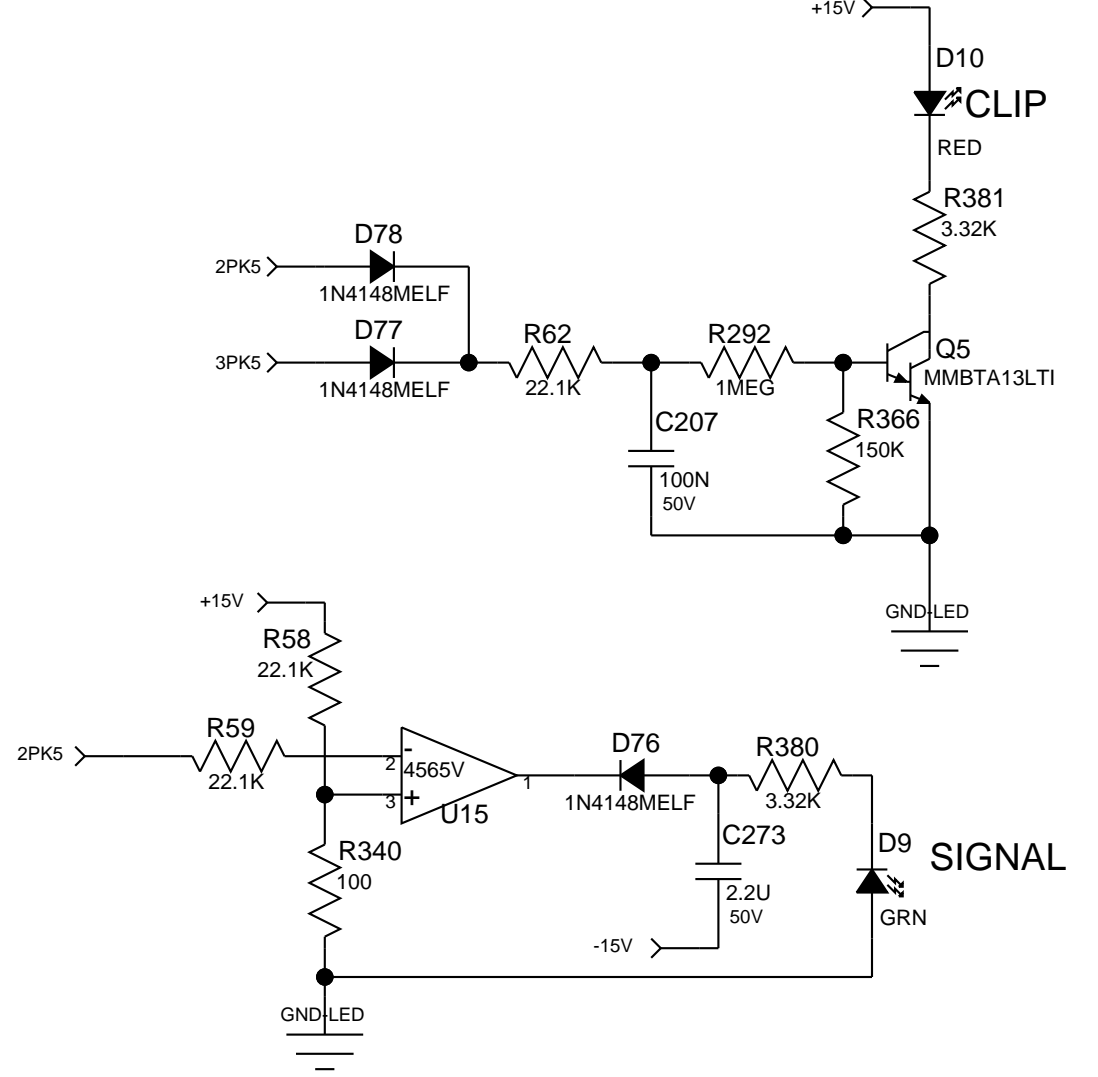
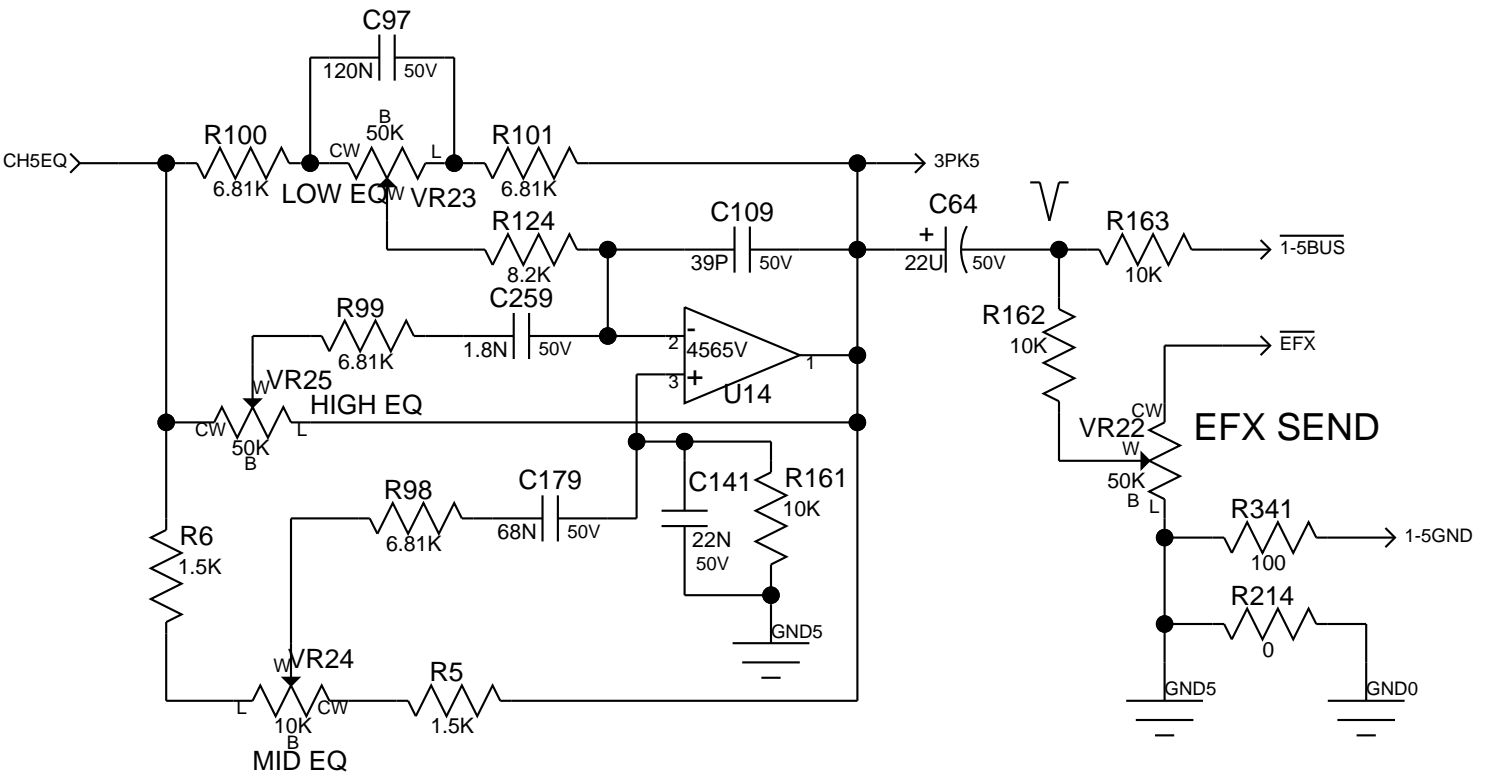
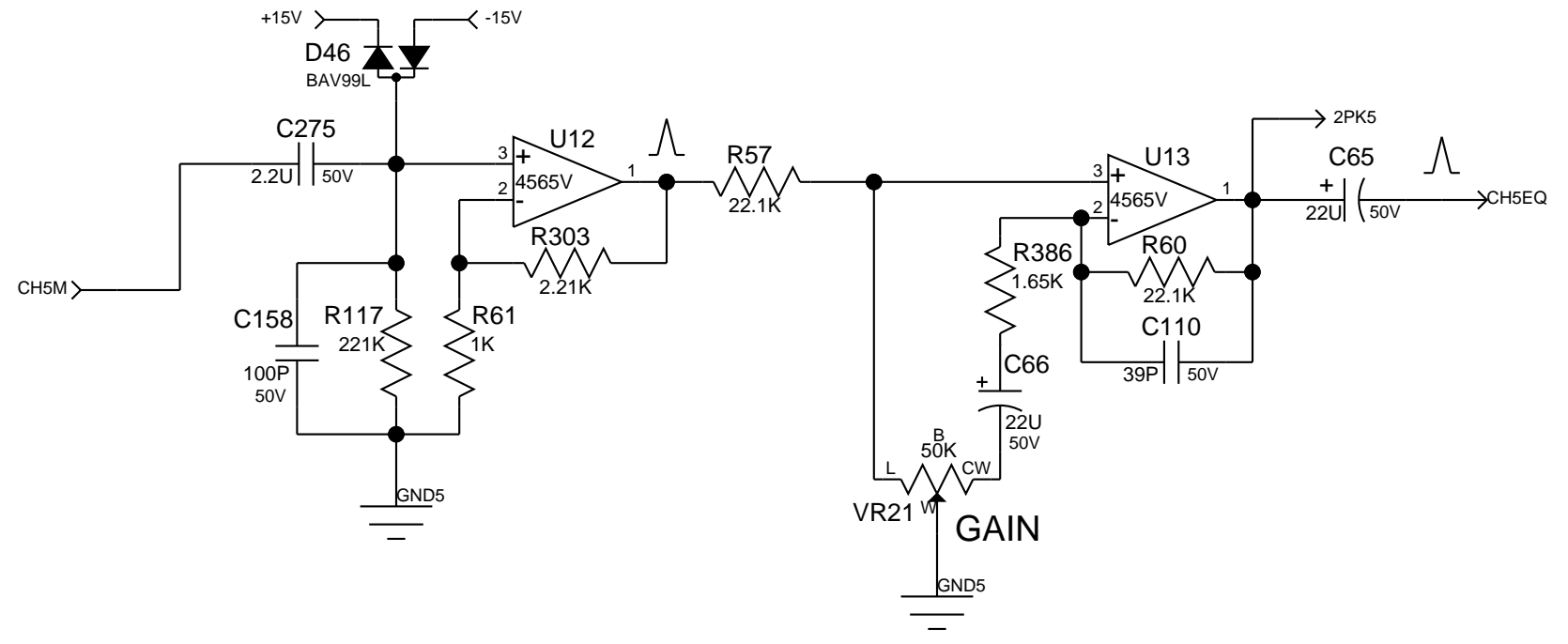
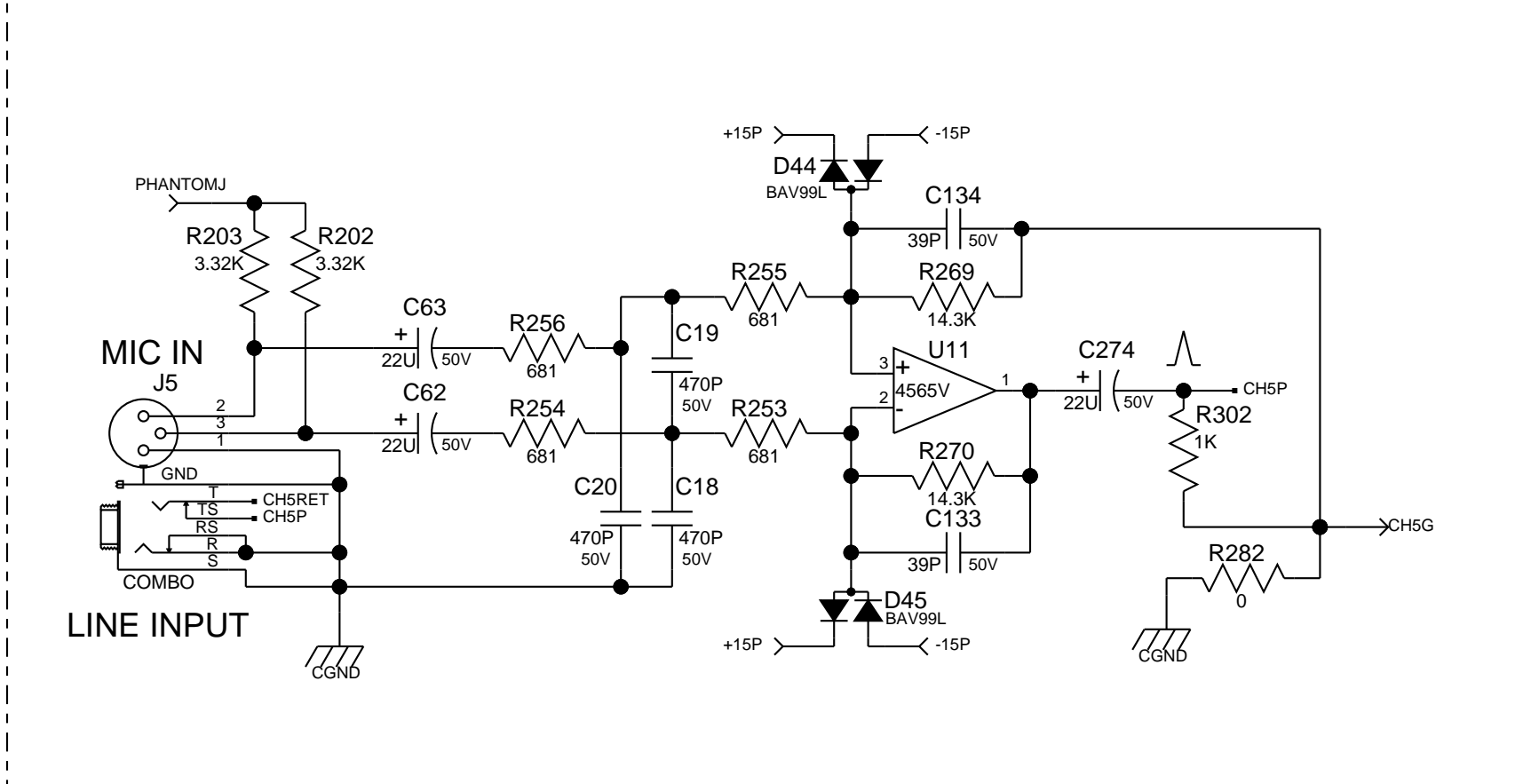
C Sheet 4 of 11 Date: 7-19-2011\_14:16



**PEAVEY**  
Peavey Electronics Corp.  
P. O. Box 2898  
Meridian, MS 39301

Title: **PVI6500**  
Sheet Title: **CHANNEL 4**

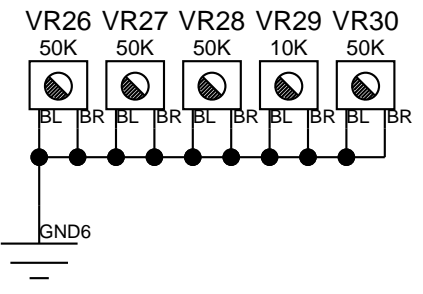
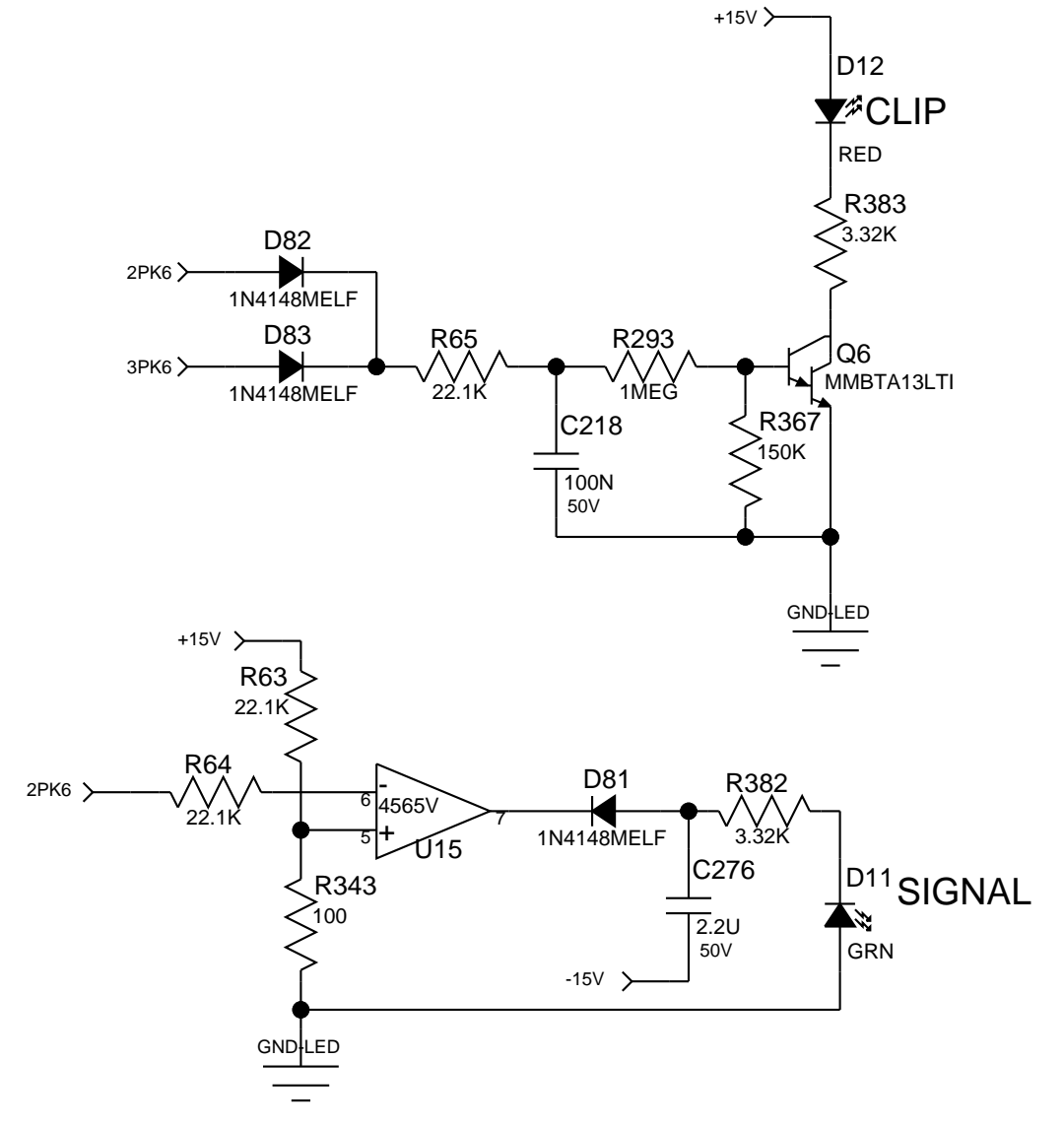
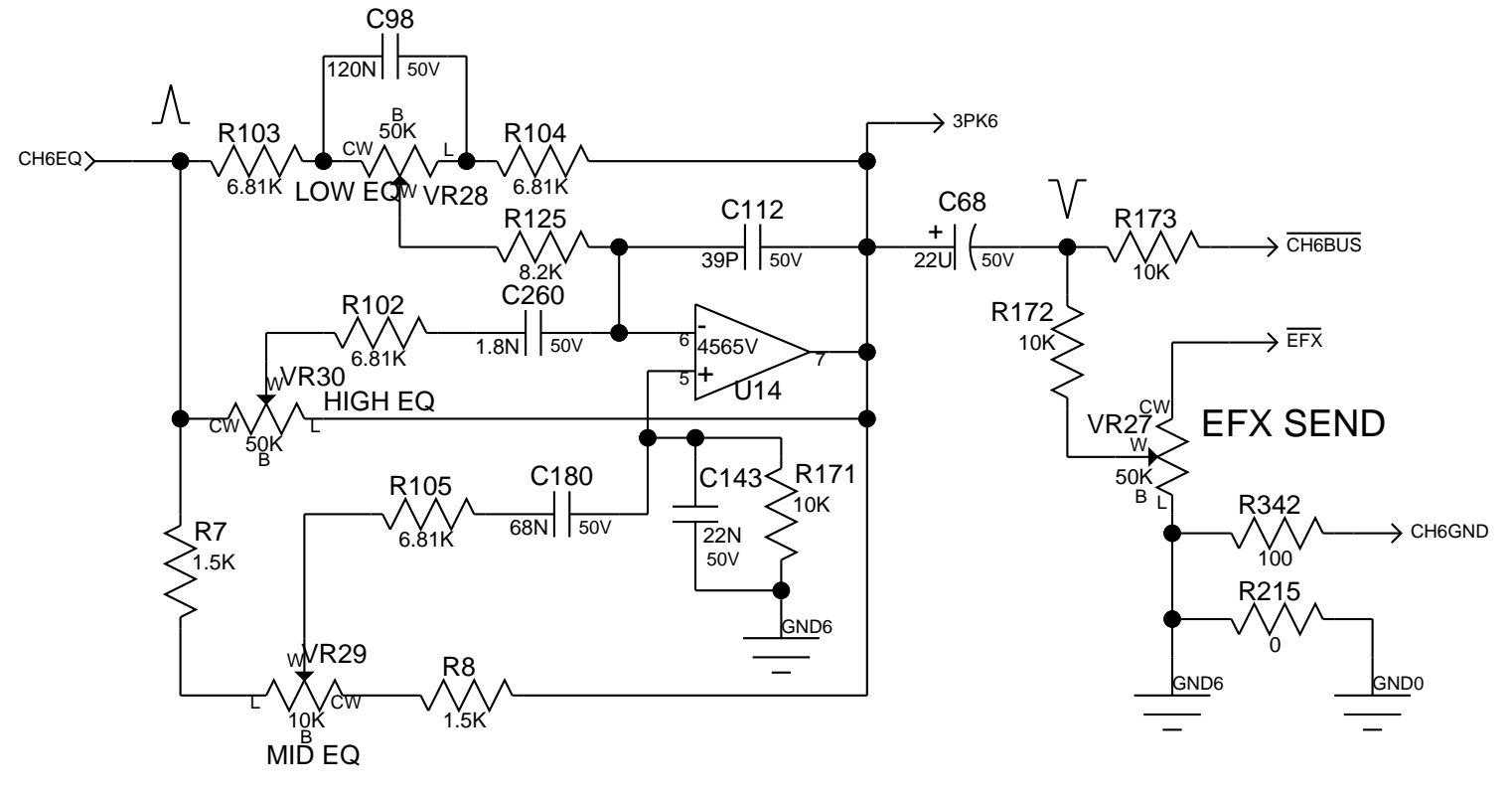
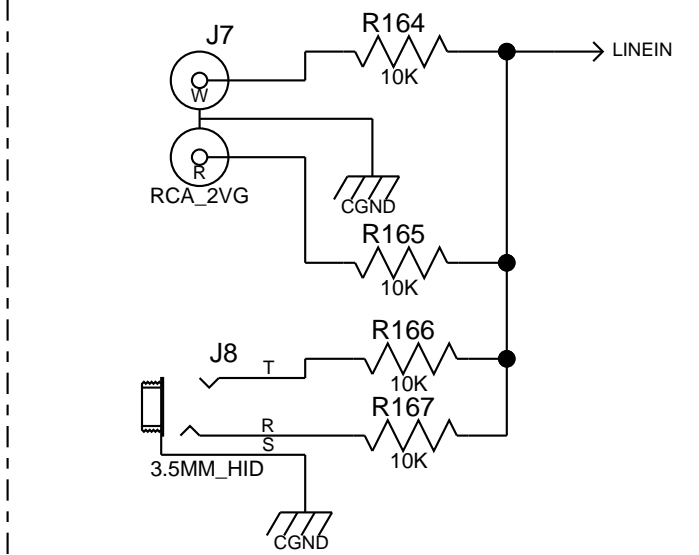
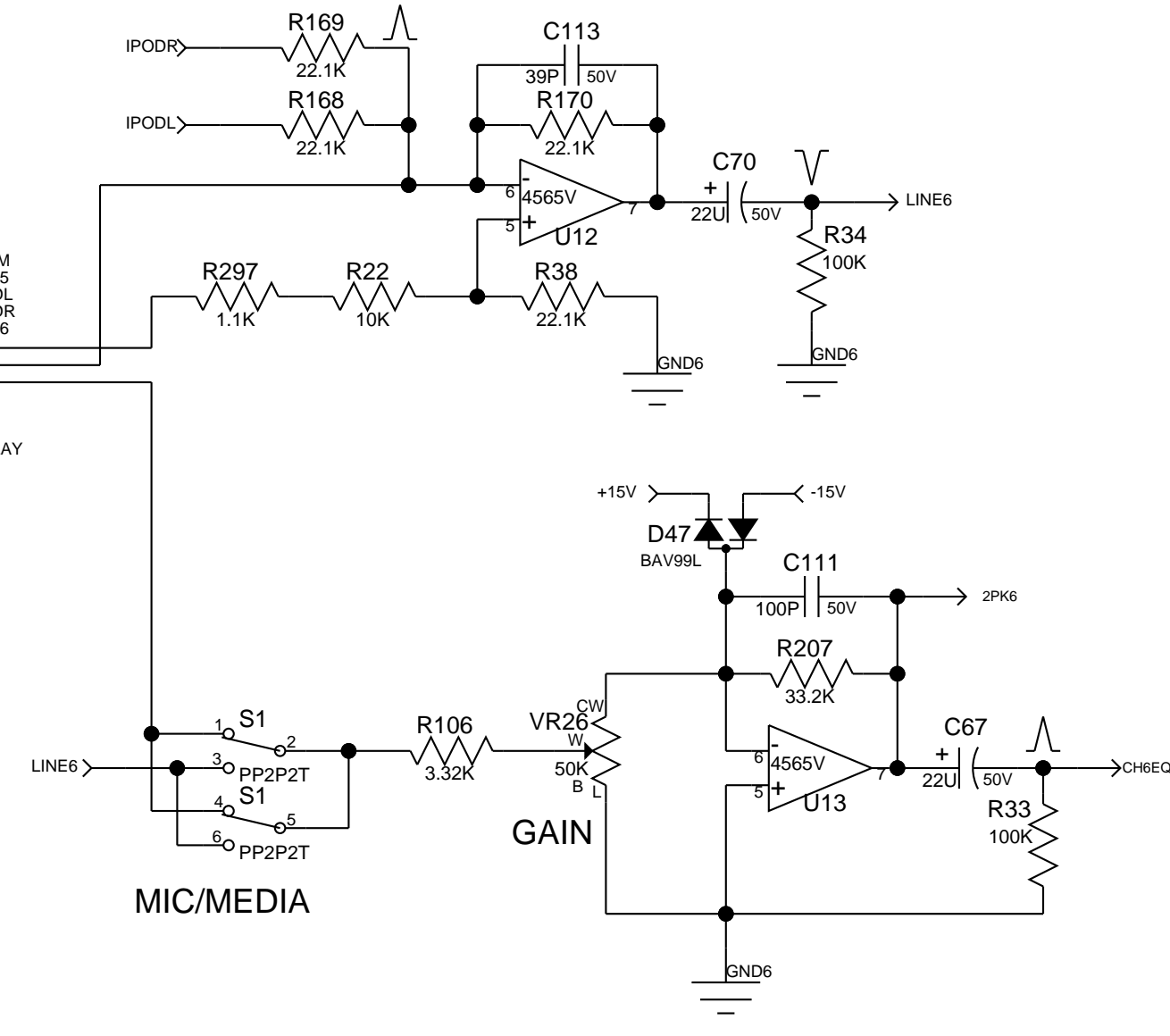
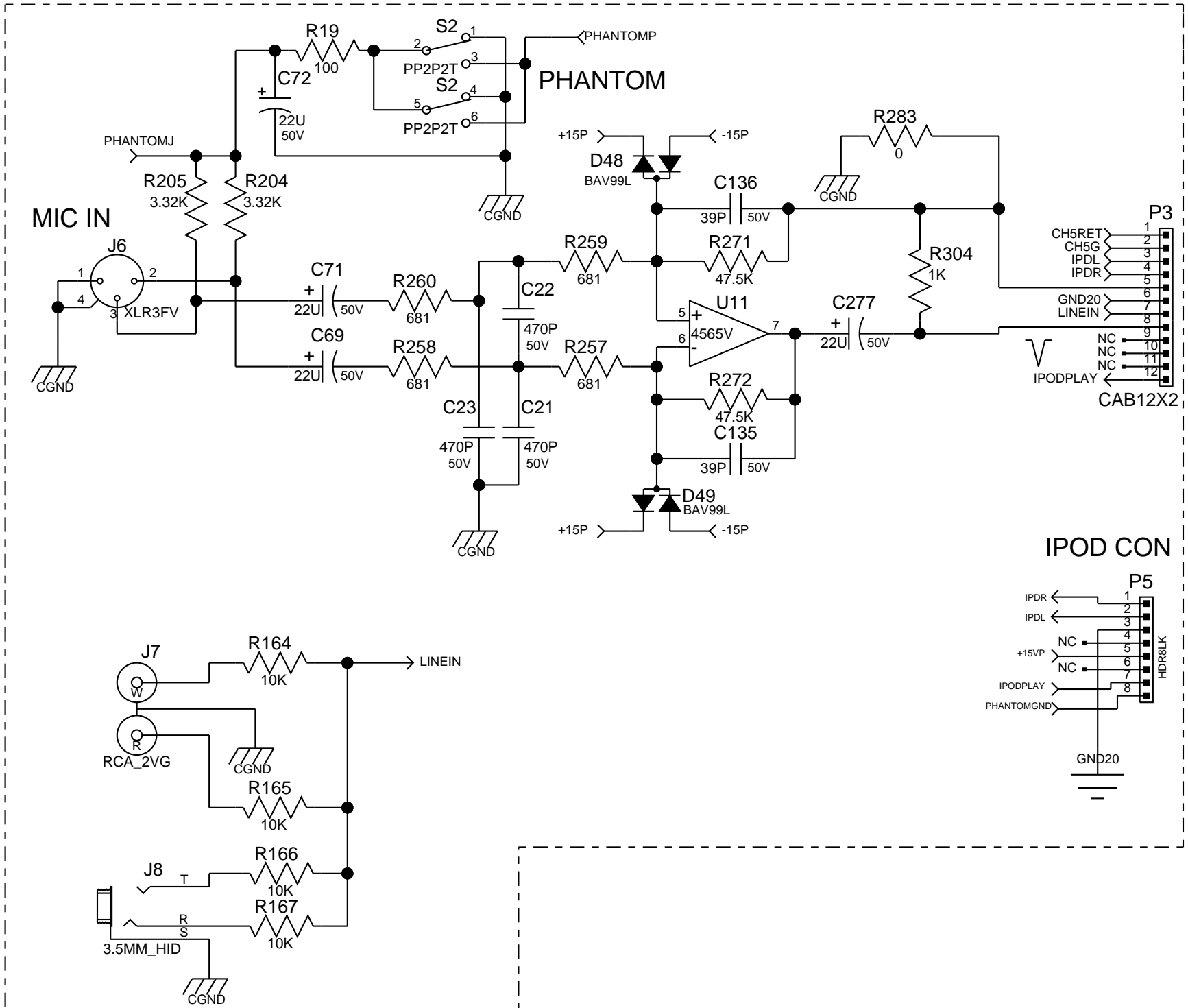
C Sheet 5 of 11 Date: 7-19-2011\_14:16



**PEAVEY**  
 Peavey Electronics Corp.  
 P. O. Box 2898  
 Meridian, MS 39301

Title: **PVI6500**  
 Sheet Title: **CHANNEL 5**

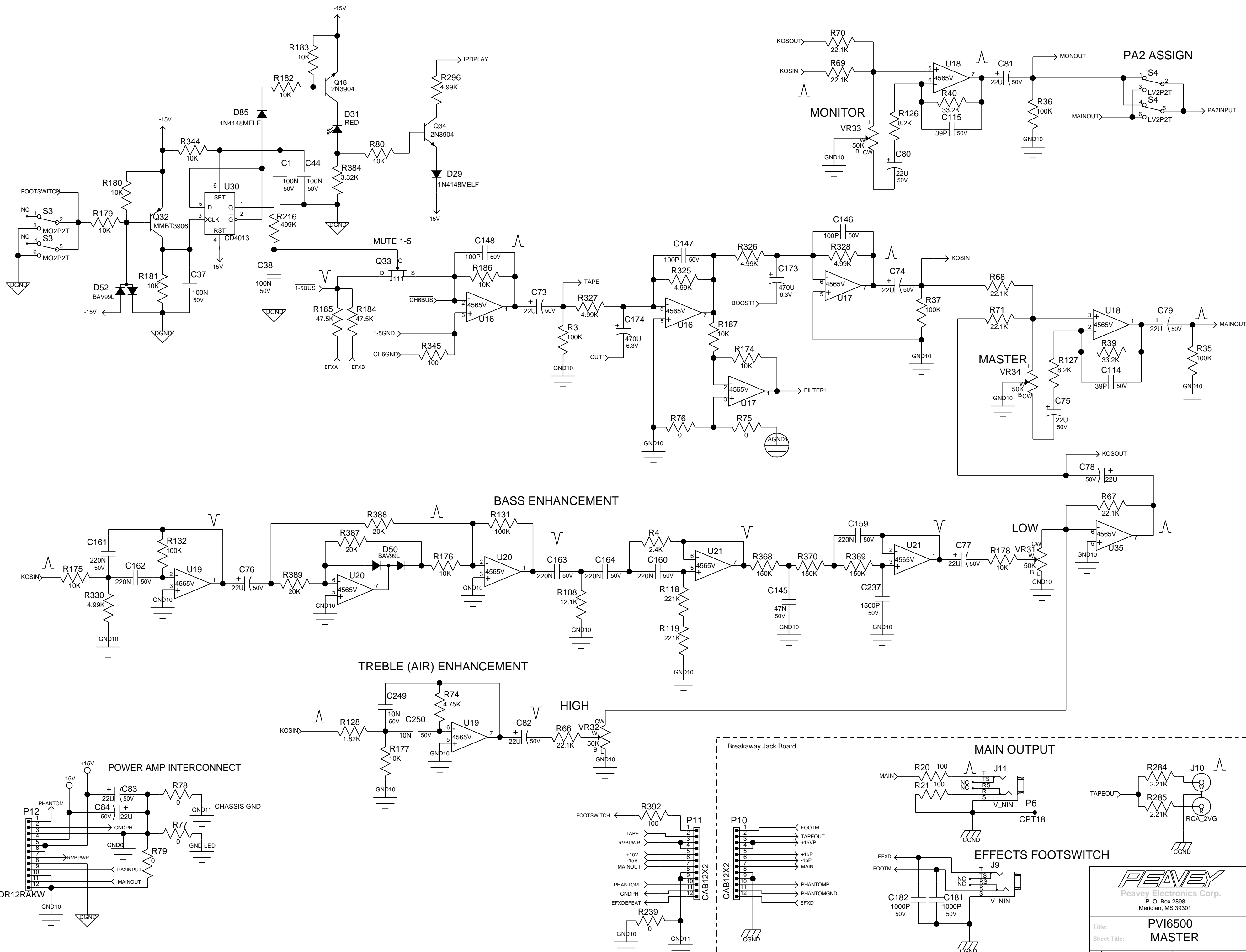
C Sheet 6 of 11 Date: 7-19-2011\_14:16



**PEAVEY**  
Peavey Electronics Corp.  
P. O. Box 2898  
Meridian, MS 39301

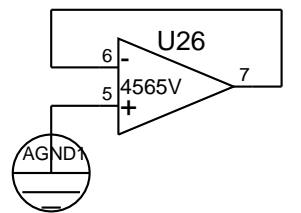
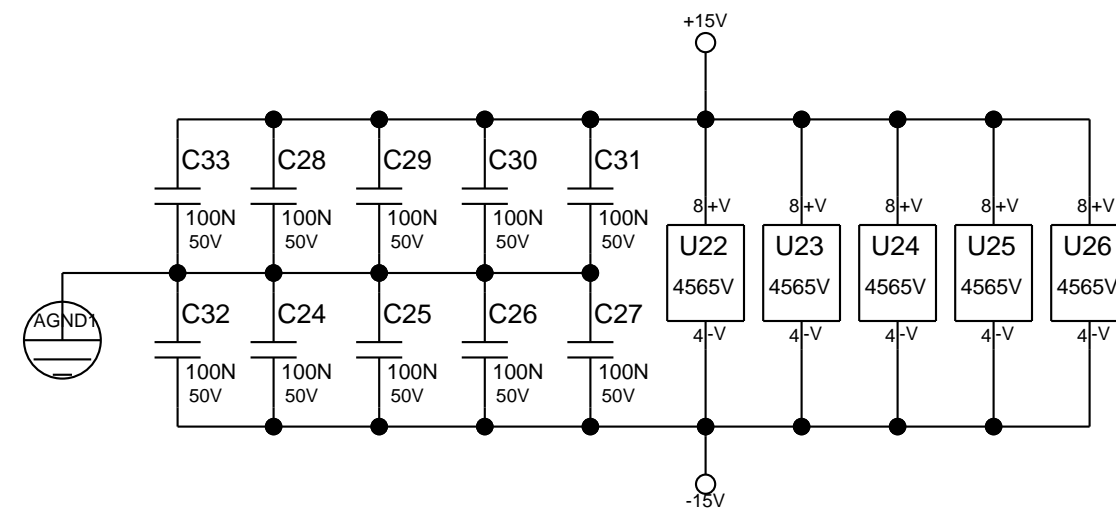
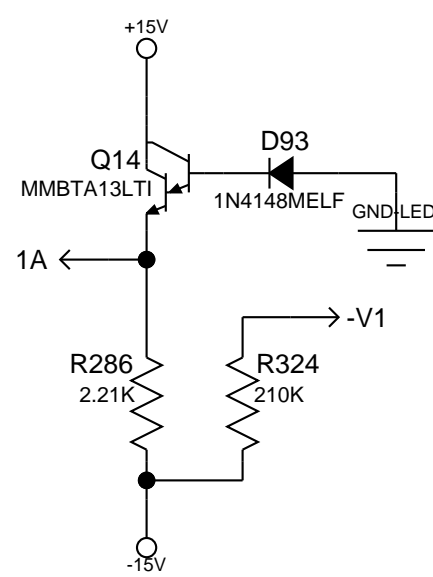
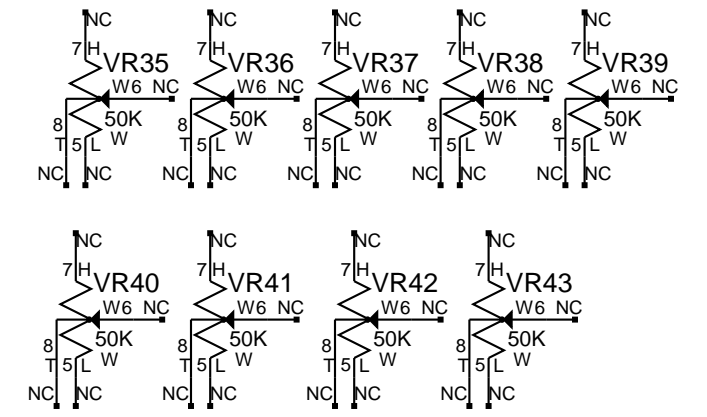
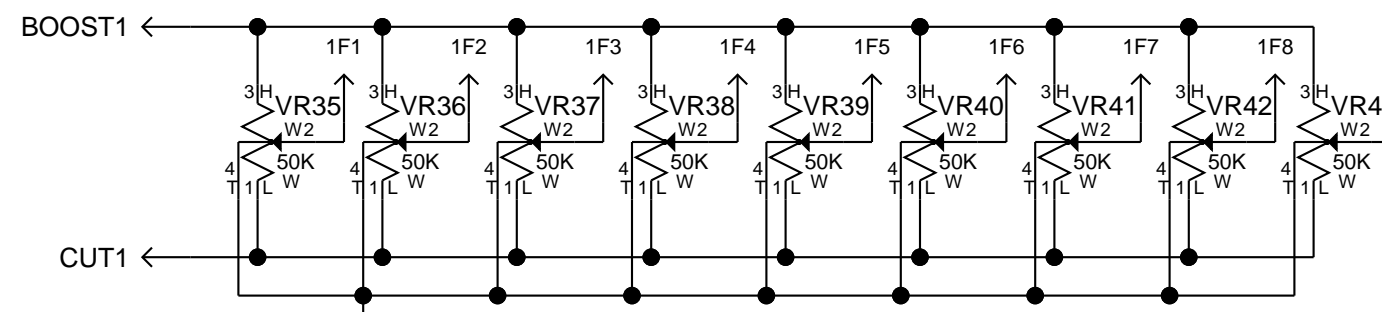
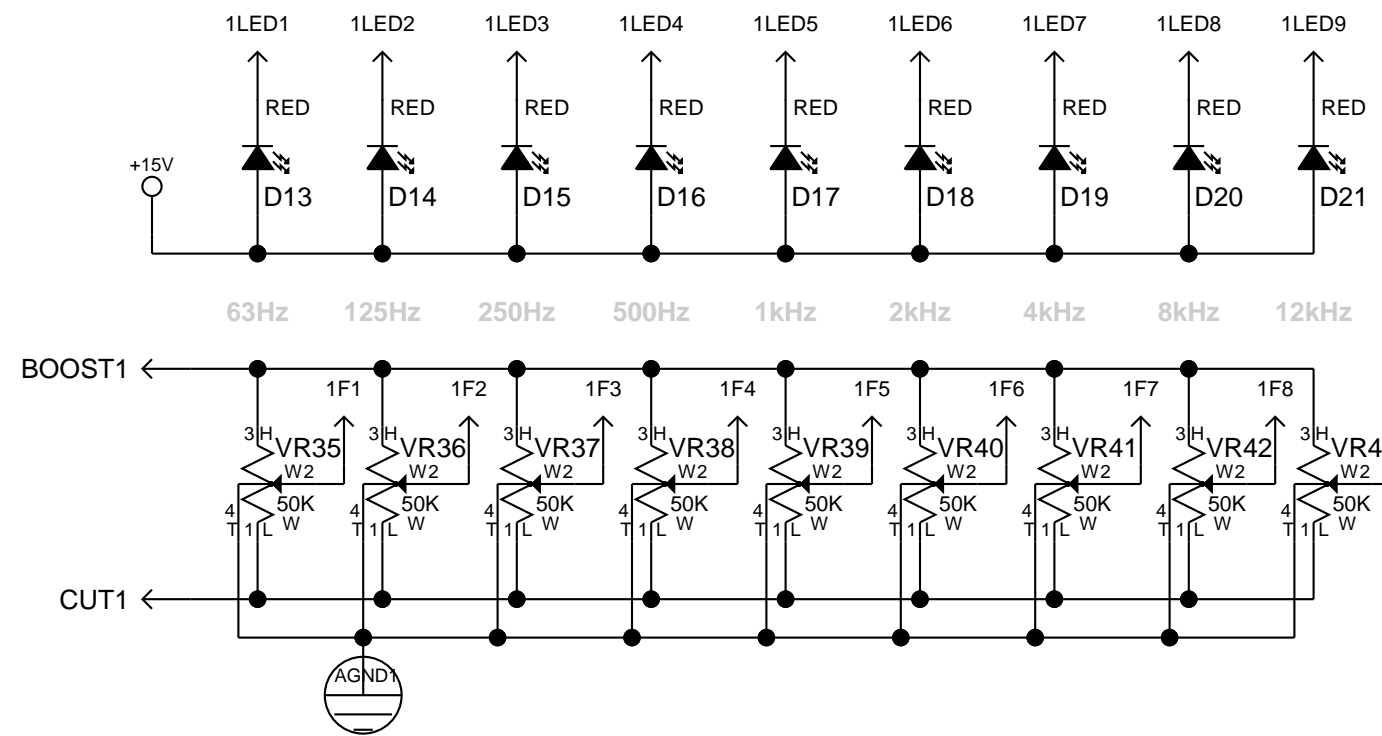
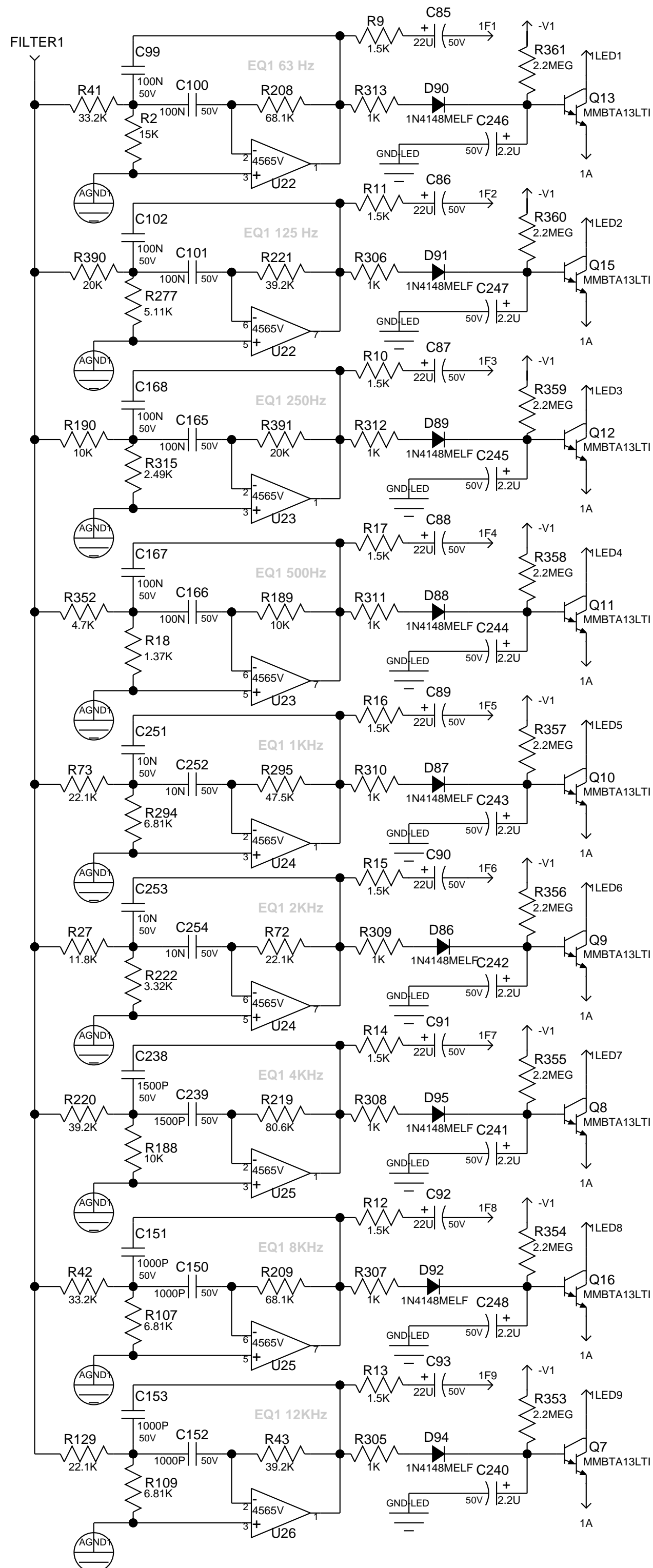
Title: **PVI6500**  
Sheet Title: **CHANNEL 6**

C Sheet 7 of 11 Date: 7-19-2011\_14:16



Title: PVI6500  
 Sheet Title: MASTER  
 C Sheet 8 of 11 Date: 7-19-2011\_14:16

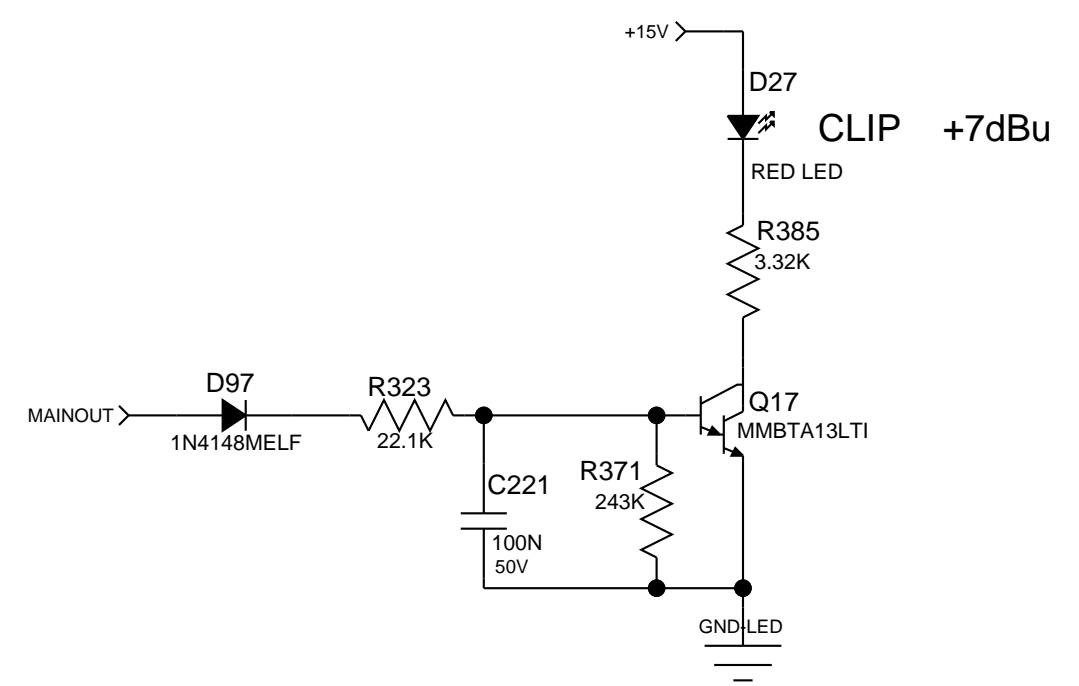




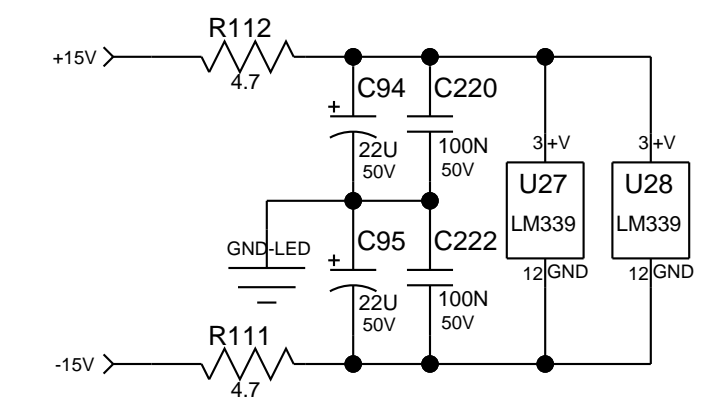
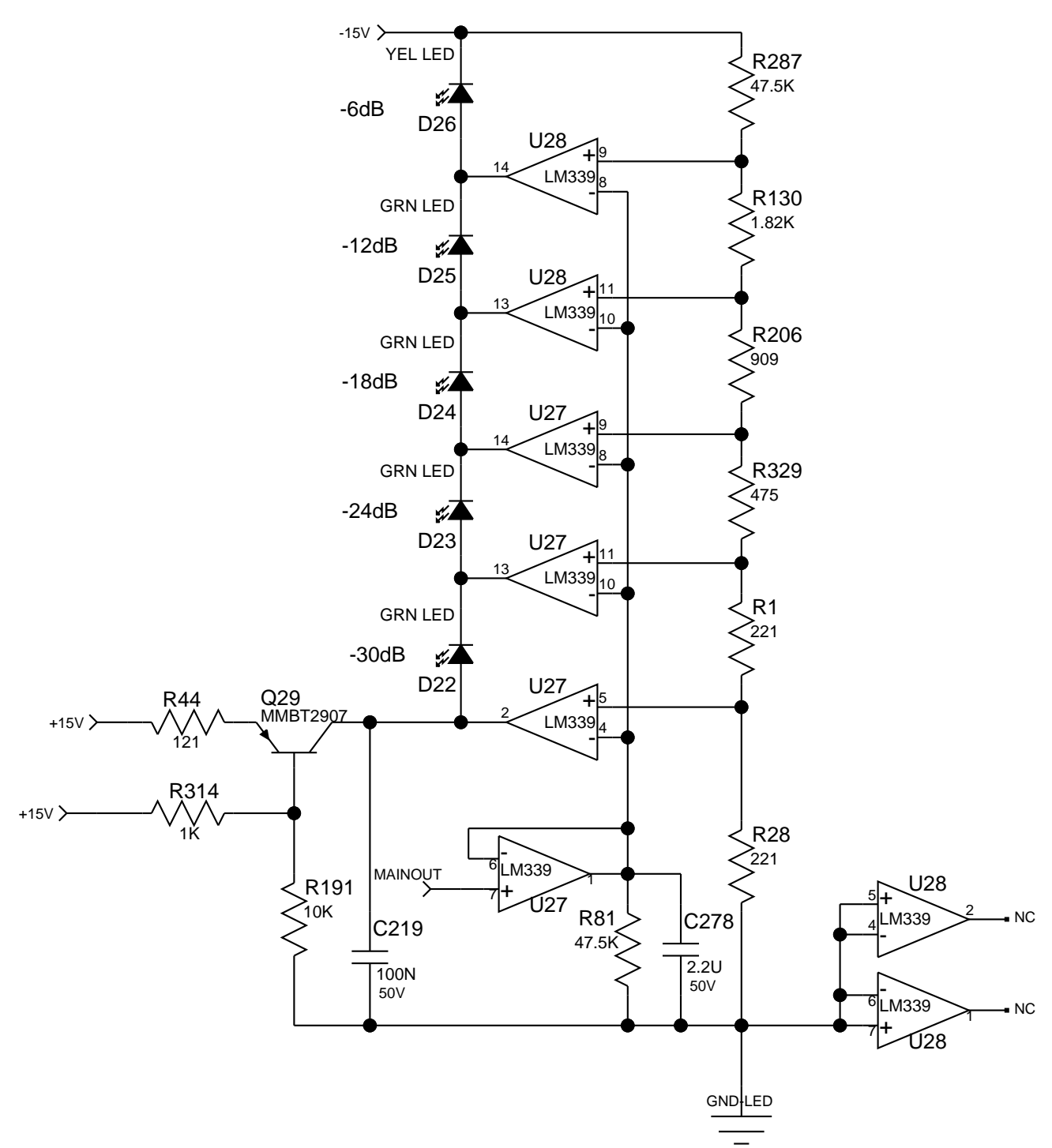
**PEAVEY**  
 Peavey Electronics Corp.  
 P. O. Box 2898  
 Meridian, MS 39301

Title: **PVI6500**  
 Sheet Title: **EQ/FLS SECTION**

C Sheet 9 of 11 Date: 7-19-2011\_14:16



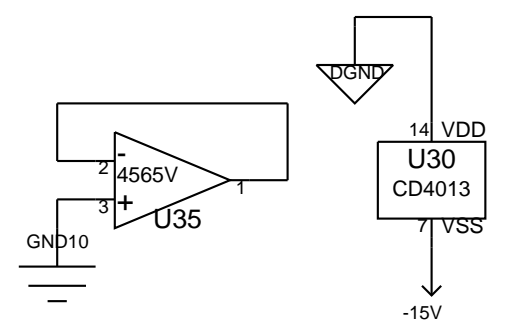
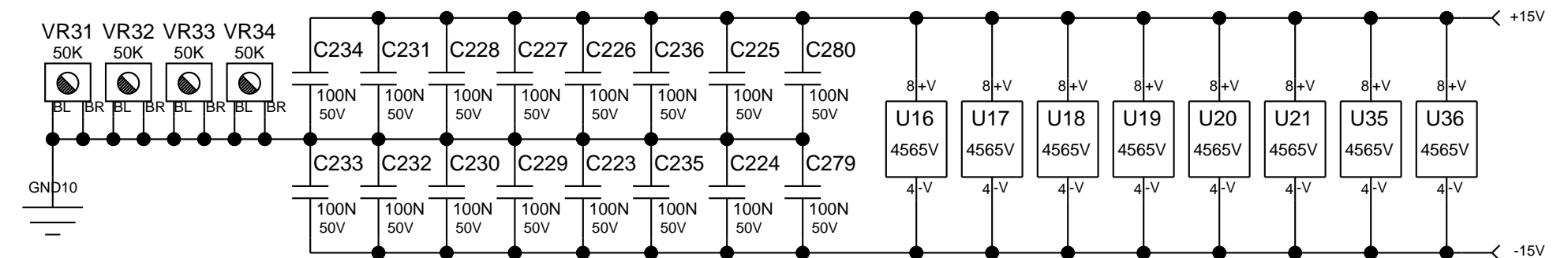
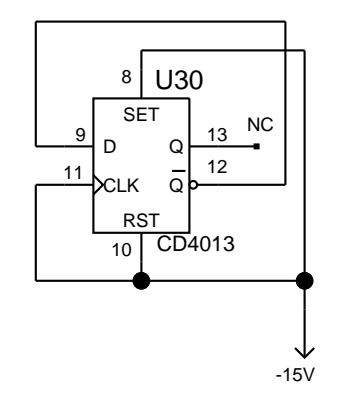
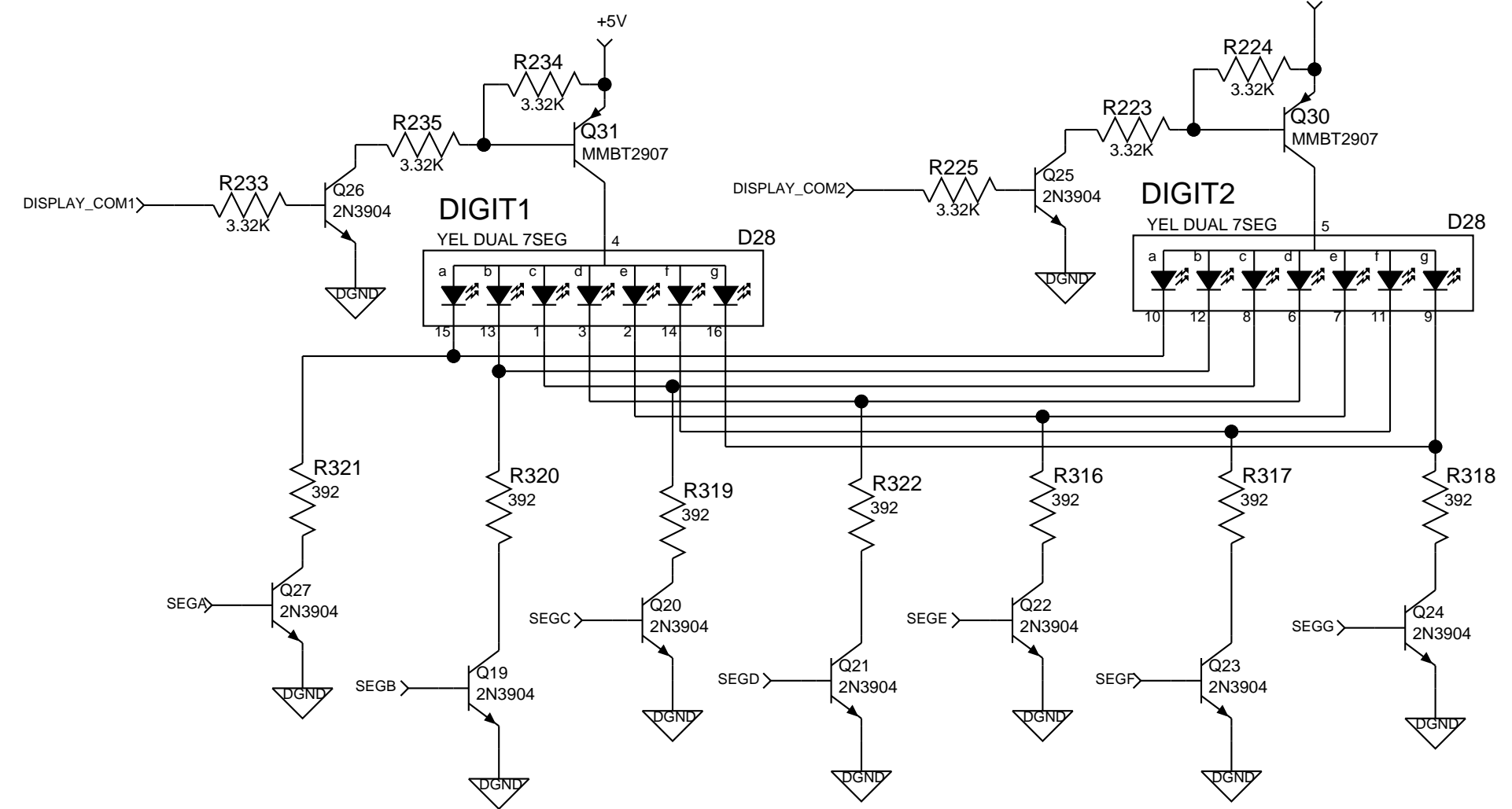
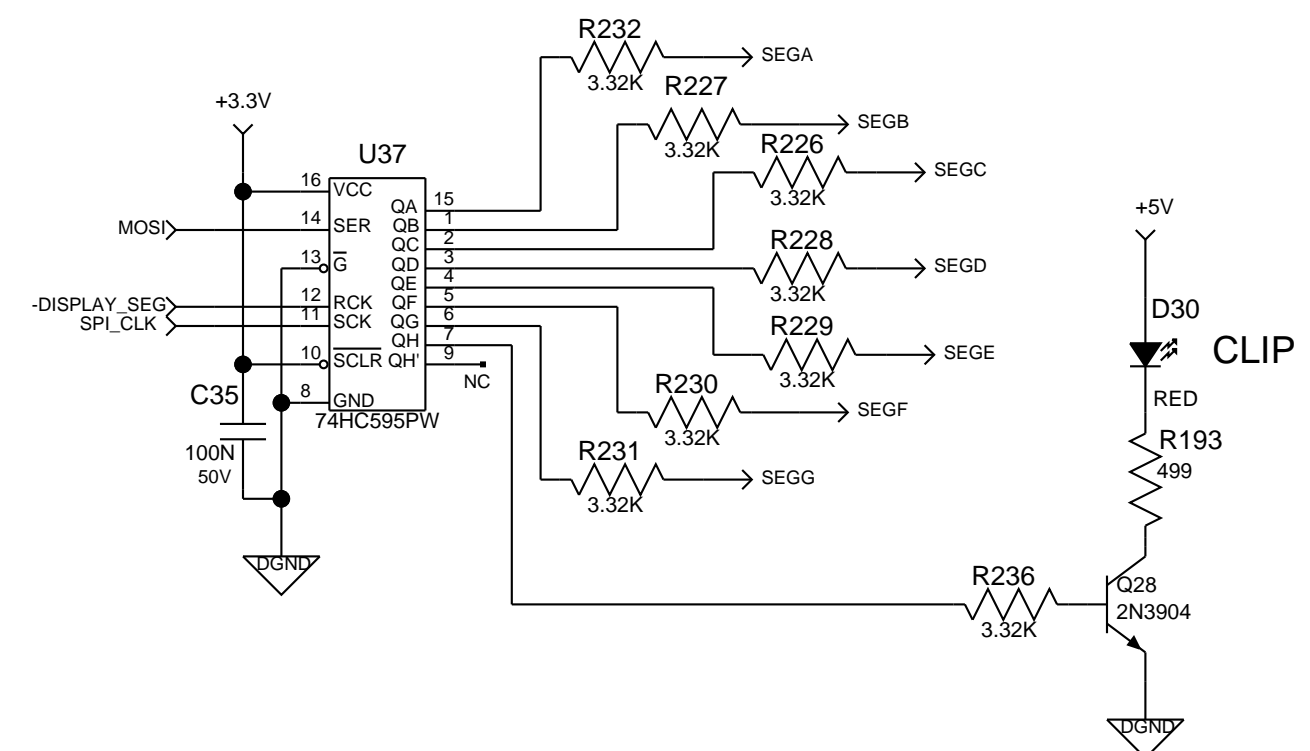
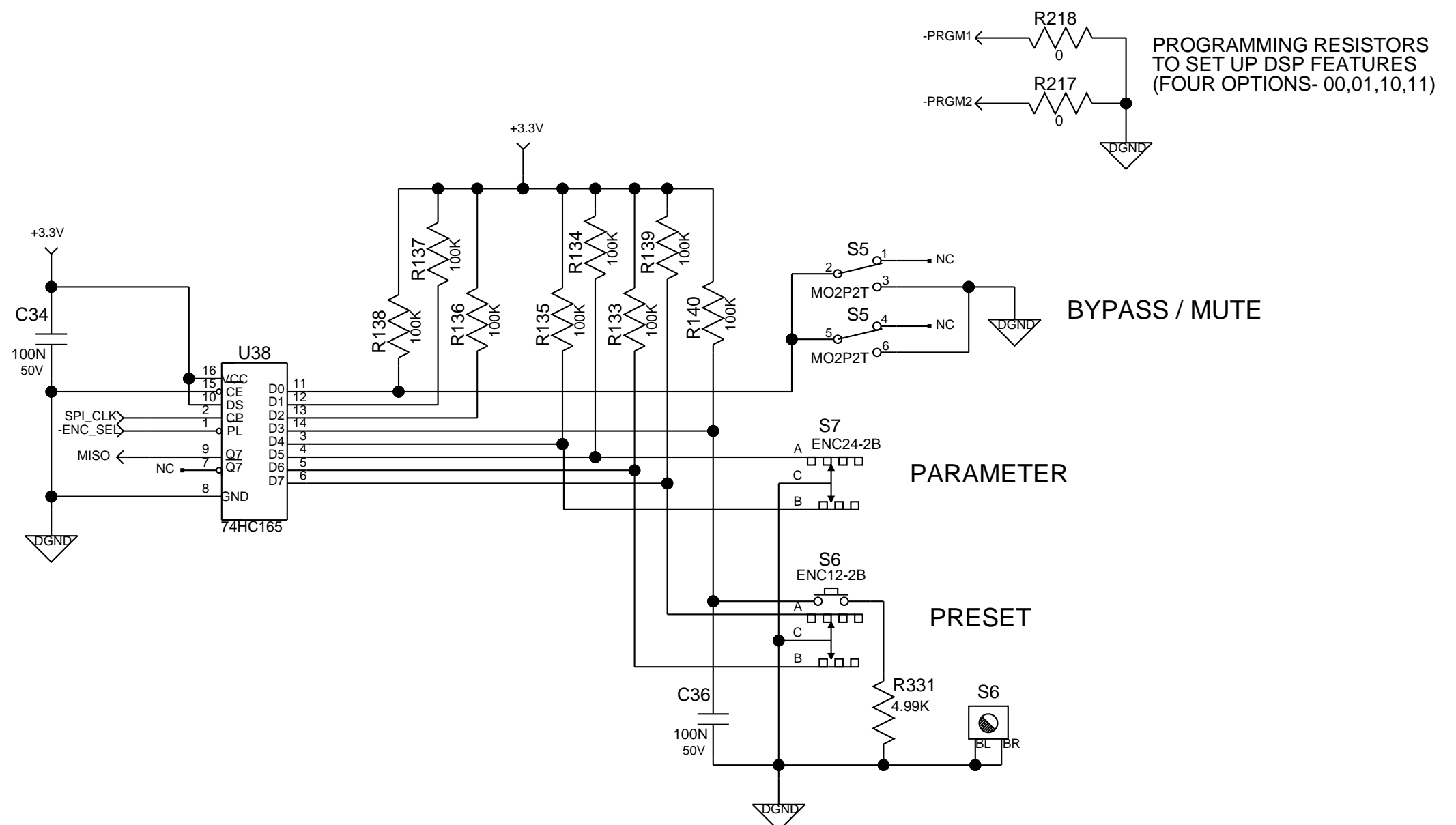
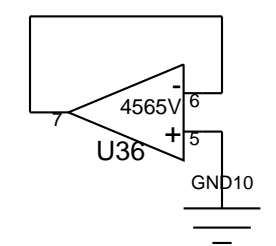
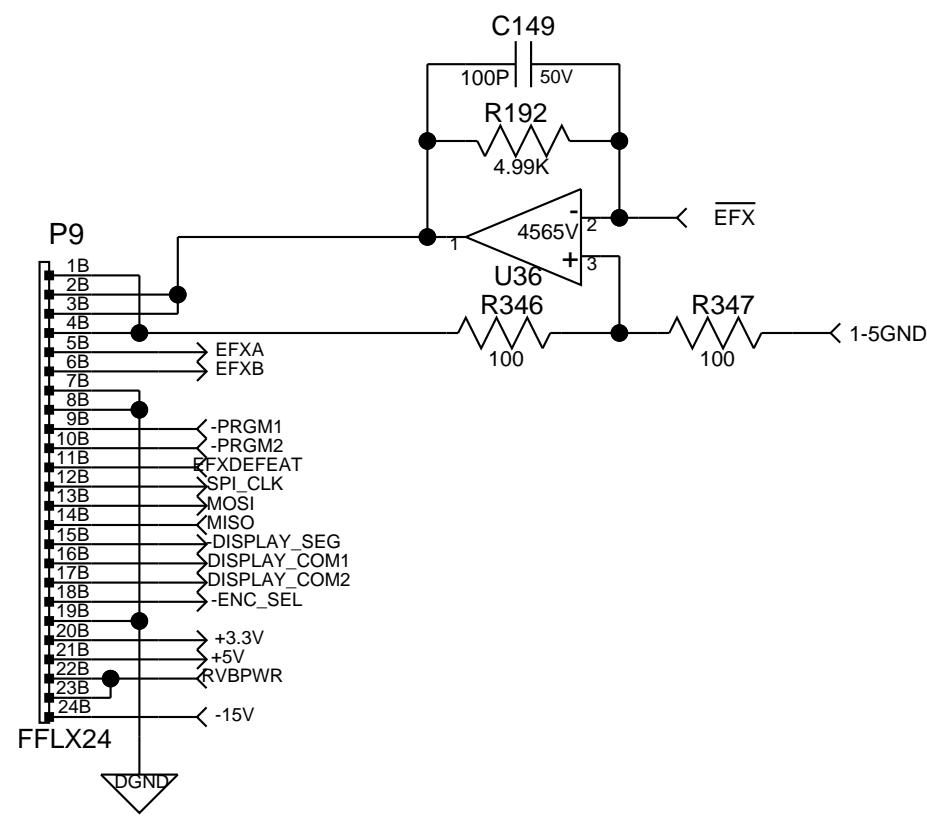
### MAIN METER



**PEAVEY**  
Peavey Electronics Corp.  
P. O. Box 2898  
Meridian, MS 39301

Title: **PVI6500**  
Sheet Title: **LED ARRAY**

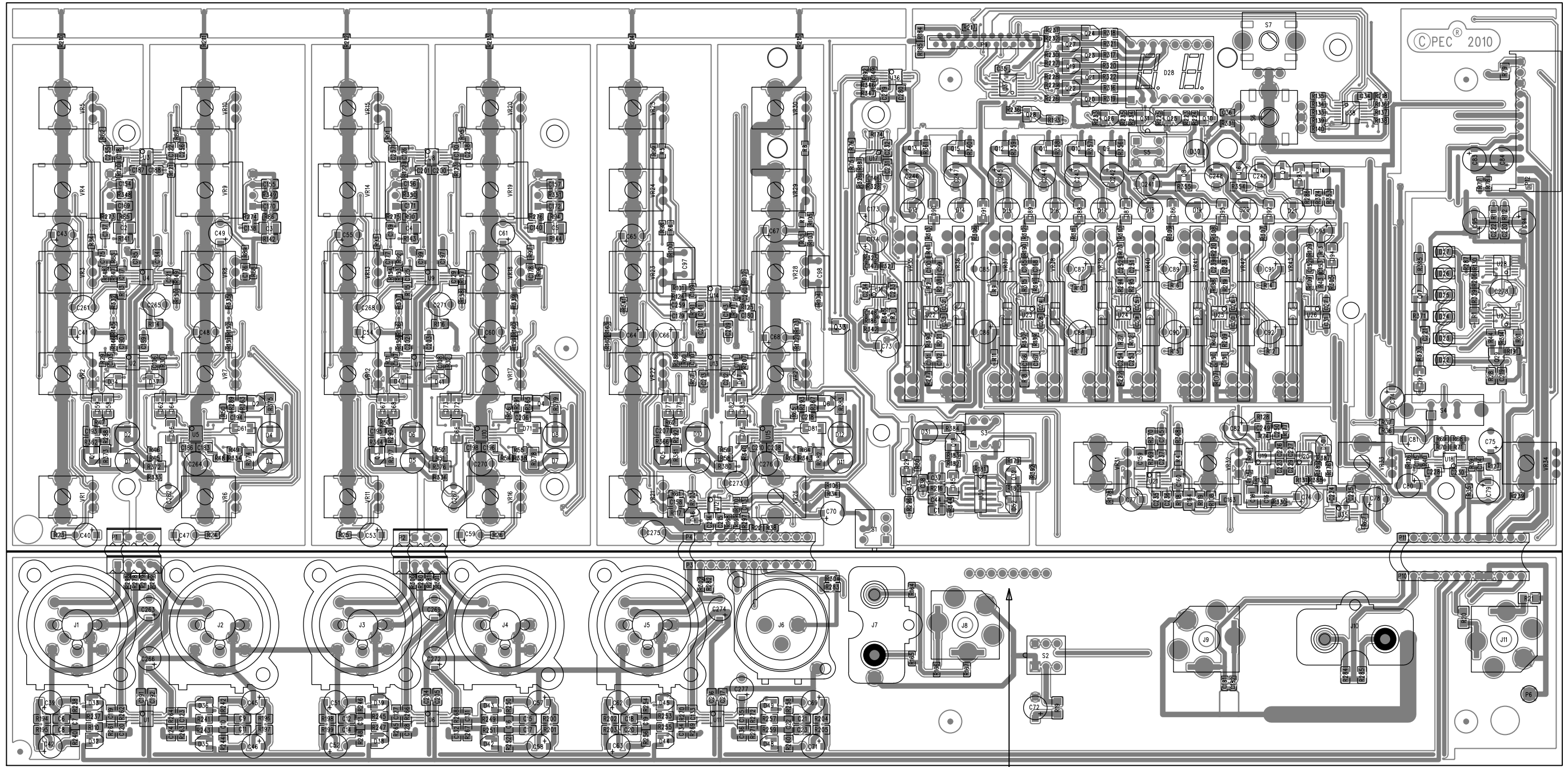
C Sheet 10 of 11 Date: 7-19-2011\_14:16



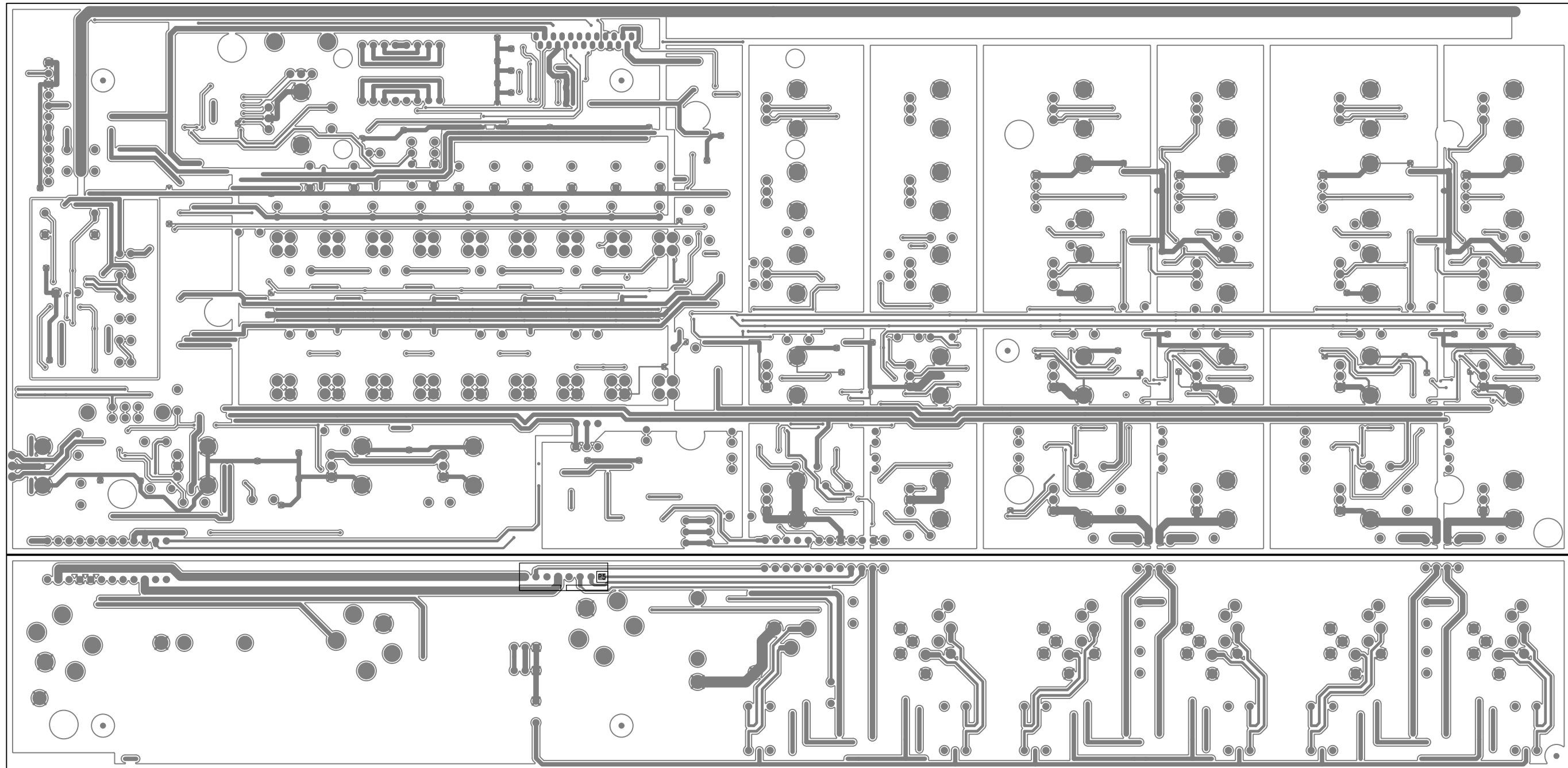
**PEAVEY**  
Peavey Electronics Corp.  
P. O. Box 2898  
Meridian, MS 39301

Title: **PVI6500**  
Sheet Title: **DSP I/O**

C Sheet 11 of 11 Date: 7-19-2011\_14:16



INSTALL P5 ON SECONDARY SIDE



BILL OF MATERIAL REPORT  
-----

REPORT DATE/TIME: 7/21/2011 8:28:21 AM

BOARD NAME: PV6500 Main      ASSEMBLY LEVEL NUMBER: 32200911

PROJECT NUMBER: P1000086      DESIGNER: FJE - 32101798

Qty.	Part #	Description	Reference
Designators			
3	30200060	100    1/4W 1% MF 1206	R19 R20 R21
14	30200105	3.32K 1/4W 1% MF 1206	R372 R373 R374
R375			R376 R377 R378
R379			R380 R381 R382
R383			R384 R385
7	30200164	0.0    JUMPER    SMT 0805	R79 R278 R279
R280			R281 R282 R283
1	30200173	4.99K 1/10W 1% MF 0805	R296
1	30200175	1.1K 1/10W 1% MF 0805	R297
2	30200183	221 1/10W 1% MF 0805	R1 R28
7	30200184	392 1/10W 1% MF 0805	R316 R317 R318
R319			R320 R321 R322
1	30200189	1.37K 1/10W 1% MF 0805	R18
1	30200193	11.8K 1/10W 1% MF 0805	R27
6	30200195	1.00M 1/10W 1% MF 0805	R288 R289 R290
R291			R292 R293
1	30200197	121 1/10W 1% MF 0805	R44
1	30200198	499 1/10W 1% MF 0805	R193
12	30200202	3.32K 1/10W 1% MF 0805	R194 R195 R196
R197			

R201					R198 R199 R200
					R202 R203 R204
R205					
	1	30200203	2.49K	1/10W 1% MF 0805	R315
	15	30200205	47.5K	1/10W 1% MF 0805	R81 R184 R185
R261					R262 R263 R264
R265					R266 R267 R268
R271					R272 R287 R295
	2	30200206	14.3K	1/10W 1% MF 0805	R269 R270
	1	30200211	210K	1/10W 1% MF 0805	R324
	2	30200241	4.70	1/10W 1% MF 0805	R111 R112
	3	30200259	39.2K	1/10W 1% MF 0805	R43 R220 R221
	4	30200267	2.21K	1/10W 1% MF 0805	R284 R285 R286
R303					
	1	30200278	80.6K	1/10W 1% MF 0805	R219
	13	30200281	0.0	JUMPER 0.1 0603	R75 R76 R77 R78
R213					R210 R211 R212
R218					R214 R215 R217
					R239
	13	30200284	1.5K	1/10W 1% MF 0603	R5 R6 R7 R8
					R9 R10 R11 R12
					R13 R14 R15 R16
					R17
	16	30200287	100	1/10W 1% MF 0603	R332 R333 R334
R335					R336 R337 R338
R339					R340 R341 R342
R343					R345 R346 R347
R392					
	6	30200288	100K	1/10W 5% MF 0603	R3 R33 R34 R35
					R36 R37

45	30200289	10K	1/10W	1% MF 0603	R22 R80 R145
R146					R147 R148 R149
R150					R151 R152 R153
R154					R155 R156 R157
R158					R159 R160 R161
R162					R163 R164 R165
R166					R167 R171 R172
R173					R174 R175 R176
R177					R178 R179 R180
R181					R182 R183 R186
R187					R188 R189 R190
R191					R344
17	30200294	1K	1/10W	1% MF 0603	R61 R298 R299
R300					R301 R302 R304
R305					R306 R307 R308
R309					R310 R311 R312
R313					R314
5	30200295	20K	1/10W	1% MF 0603	R387 R388 R389
R390					R391
34	30200296	22.1K	1/10W	1% MF 0603	R38 R45 R46 R47
					R48 R49 R50 R51
					R52 R53 R54 R55
					R56 R57 R58 R59
					R60 R62 R63 R64
					R65 R66 R67 R68
					R69 R70 R71 R72
					R73 R129 R168
R169					R170 R323
20	30200301	3.32K	1/10W	1% MF 0603	R23 R24 R25 R26
R224					R106 R222 R223



R228						R225 R226 R227
R232						R229 R230 R231
R236						R233 R234 R235
5 R351	30200310	4.7K	1/10W	5% MF	0603	R348 R349 R350
						R352
26	30200319	6.81K	1/10W	1% MF	0603	R82 R83 R84 R85 R86 R87 R88 R89 R90 R91 R92 R93 R94 R95 R96 R97 R98 R99 R100
R101						R102 R103 R104
R105						R107 R109
8 R123	30200323	8.2K	1/10W	1% MF	0603	R120 R121 R122
R127						R124 R125 R126
4 R144	30200327	6.04K	1/10W	1% MF	0805	R141 R142 R143
1	30200328	6.81K	1/10W	1% MF	0805	R294
2	30200335	68.1K	1/10W	1% MF	0805	R208 R209
7 R116	30200342	221K	1/10W	1% MF	0805	R113 R114 R115 R117 R118 R119
1	30200356	475	1/10W	1% MF	0805	R329
1	30200376	12.1K	1/10W	1% MF	0805	R108
1	30200383	909	1/10W	1% MF	0805	R206
2	30200437	1.82K	1/10W	1% MF	0805	R128 R130
9 R356	30200443	2.2M	1/10W	5%	0805	R353 R354 R355 R357 R358 R359
R360						R361

1	30200455	2.4K	1/10W 1% MF 0603	R4
1	30200471	4.75K	1/10W 1% MF 0603	R74
5 R276	30200472	5.11K	1/10W 1% MF 0603	R273 R274 R275 R277
10 R134 R138	30200475	100K	1/10W 1% MF 0603	R131 R132 R133 R135 R136 R137 R139 R140
1	30200485	1.65K	1/10W 1% MF 0603	R386
24 R240 R244 R248 R252 R256 R260	30200491	681	1/10W 1% 0805	R110 R237 R238 R241 R242 R243 R245 R246 R247 R249 R250 R251 R253 R254 R255 R257 R258 R259
1	30200527	15K	1/10W 1% 0603	R2
1	30200534	499K	1/10W 1% 0805	R216
9 R365 R369	30200538	150K	1/10W 1% 0805	R362 R363 R364 R366 R367 R368 R370
9	30200539	33.2K	1% 1/10W 0603	R29 R30 R31 R32 R39 R40 R41 R42 R207
1	30200542	243K	1/10W 1% 0805	R371
7 R327	30200553	4.99K	1% 1/10W 0603	R192 R325 R326 R328 R330 R331
10 C162	30300069	0.22UF	50V 10% X7R 1206	C2 C3 C4 C5 C159 C160 C161 C163 C164

56	30300085	0.1UF	50V	20%	Z5U	0805	C183	C184	C185	
C186							C187	C188	C189	
C190							C191	C192	C193	
C194							C195	C196	C197	
C198							C199	C200	C201	
C202							C203	C204	C205	
C206							C207	C208	C209	
C210							C211	C212	C213	
C214							C215	C216	C217	
C218							C219	C220	C221	
C222							C223	C224	C225	
C226							C227	C228	C229	
C230							C231	C232	C233	
C234							C235	C236	C279	
C280										
20	30300087	39PF	50V	5%	NPO	0805	C117	C118	C119	
C120							C121	C122	C123	
C124							C125	C126	C127	
C128							C129	C130	C131	
C132							C133	C134	C135	
C136										
1	30300088	100PF	50V	5%	NPO	0805	C158			
18	30300090	470PF	50V	5%	NPO	0805	C6	C7	C8	C9
							C10	C11	C12	C13
							C14	C15	C16	C17
							C18	C19	C20	C21
							C22	C23		
4	30300093	0.1UF	50V	10%	X7R	0805	C1	C37	C38	C44

6 C252	30300116	0.01UF 50V 5% X7R 0805	C249 C250 C251 C253 C254
8 C102 C168	30300121	0.1UF 50V 5% X7R 0805	C99 C100 C101 C165 C166 C167
2	30300123	1000PF 50V 10% X7R 0603	C181 C182
13	30300128	0.1UF 50V □20% Y5V 0603	C24 C25 C26 C27 C28 C29 C30 C31 C32 C33 C34 C35 C36
9 C108 C148	30300133	100PF 50V 5% NPO 0603	C105 C106 C107 C111 C146 C147 C149
4 C157	30300145	3300PF 50V 5% X7R 0805	C154 C155 C156
6 C140	30300148	0.022UF 50V 5% X7R 0805	C137 C138 C139 C141 C143
4 C153	30300160	1000PF 50V 5% NPO 0603	C150 C151 C152
1	30300171	0.047UF 50V 5% X7R 0805	C145
10 C172 C178	30300176	0.068UF 50V 5% X7R 0805	C169 C170 C171 C175 C176 C177 C179 C180
6 C113	30300220	39PF 50V 5% NPO 0603	C109 C110 C112 C114 C115
6 C258	30300234	1800PF 50V 5% NPO 0805	C255 C256 C257 C259 C260
3	30300245	1500PF 50V 5% NPO 0805	C237 C238 C239

9	30320180	2.2UF	50V	20%	EL	RAD	C240	C241	C242	
C243							C244	C245	C246	
C247							C248			
60	30320181	22UF	50V	20%	EL	RAD	C39	C40	C41	C42
							C43	C45	C46	C47
							C48	C49	C51	C52
							C53	C54	C55	C57
							C58	C59	C60	C61
							C62	C63	C64	C65
							C66	C67	C68	C69
							C70	C71	C72	C73
							C74	C75	C76	C77
							C78	C79	C80	C81
							C82	C83	C84	C85
							C86	C87	C88	C89
							C90	C91	C92	C93
							C94	C95	C263	
C266							C269	C272	C274	
C277										
2	30320183	470UF	6.3V	20%	EL	RAD	C173	C174		
12	30320184	2.2UF	50V	20%	ELN	RAD	C261	C262	C264	
C265							C267	C268	C270	
C271							C273	C275	C276	
C278										
2	30330133	0.12UF	50V	5%	PE	RAD	C97	C98		
31	30418026	1N4148	(LL34)		DIODE	SMT	D29	D56	D58	D59
							D61	D62	D64	D66
							D67	D68	D71	D72
							D73	D76	D77	D78
							D81	D82	D83	D85
							D86	D87	D88	D89
							D90	D91	D92	D93
							D94	D95	D97	
17	30418051	MMBTA13LTI	NPN	DARL.	SMT		Q1	Q2	Q3	Q4
							Q5	Q6	Q7	Q8
							Q9	Q10	Q11	Q12
							Q13	Q14	Q15	Q16
							Q17			
12	30418135	2N3904	NPN	SOT23			Q18	Q19	Q20	Q21
							Q22	Q23	Q24	Q25

			Q26 Q27 Q28 Q34
1	30418138	J111 JFET N SOT23	Q33
1	30418221	CD4013 DUAL D FLP FLP SO14	U30
3	30418284	MMBT2907 PNP SOT23	Q29 Q30 Q31
1	30418421	MMBT3906 PNP SOT23	Q32
1	30418588	74HC595PW 8-TRI SHIFT REG SMT	U37
2	30418649	LM339 QUAD COMPARATOR TSSOP	U27 U28
20	30418655	BAV99L DUAL 4148 DIODE SO	D32 D33 D34 D35 D36 D37 D38 D39 D40 D41 D42 D43 D44 D45 D46 D47 D48 D49 D50 D52
1	30418668	74HC165 PARALLEL-IN/SERIAL OUT	U38
28	30418835	NJM4565 DUAL OPAMP SSOP8	U1 U2 U3 U4 U5 U6 U7 U8 U9 U10 U11 U12 U13 U14 U15 U16 U17 U18 U19 U20 U21 U22 U23 U24 U25 U26 U35 U36
17	30450050	RED T1 LED W/.500" SPCR	D2 D4 D6 D8 D10 D12 D13 D14 D15 D16 D17 D18 D19 D20 D21 D30 D31
6	30450051	GRN T1 LED W/.500" SPCR	D1 D3 D5 D7 D9 D11
1	30450090	YEL DUAL 7 SEGMENT LED DISPLAY	D28
1	30450837	RED RECT LED W/0.390" SPACER	D27
4	30450838	GRN RECT LED W/0.390" SPACER	D22 D23 D24 D25
1	30450839	YEL RECT LED W/0.390" SPACER	D26
4	30600064	12C 2.5MM STRP STRP 2" JMP	P3 P4 P10 P11

2	30600520	4C 2.5MM WPCB WPCB 2.25"	P1 P2
2	31190257	10KB 9MM VPC W/DTT	VR24 VR29
28	31190259	50KB SNGL 9MM DET VER	VR1 VR2 VR3 VR5 VR6 VR7 VR8 VR10 VR11 VR12 VR13
VR15			
			VR16 VR17 VR18
VR20			
			VR21 VR22 VR23
VR25			
			VR26 VR27 VR28
VR30			
			VR31 VR32 VR33
VR34			
9	31190459	DUAL 50K (W TAPER) SLIDE	VR35 VR36 VR37
VR38			
			VR39 VR40 VR41
VR42			
			VR43
4	31191022	50KB SNGL 12MM VER	VR4 VR9 VR14
VR19			
1	31322321	SWITCH, DPDT PC MNT SLIDE	S4
2	31322356	SWITCH DPDT 2.8MM SHFT V	S1 S2
2	31322361	SWITCH DPDT 2.8MM MOM V	S3 S5
1	31322531	ENCDR 12P 12D 2BIT SW PC V	S6
1	31322565	ENCODER 24P 24D 2BIT PC V	S7
2	31466481	DUAL RCA 24MM VERT GOLD	J7 J10
2	31466543	STEREO HID JACK NINS W/SPD	J9 J11
1	31466552	FXLR A-SER VERT PIN4 CHAS,FP,SHL	J6
1	31466557	JACK, 3.5MM PHONE HI-D	J8
5	31466558	COMB COAXL FXLR-1/4JK V	J1 J2 J3 J4 J5
1	33711820	12 HDR H SR 2.5MM TIN	P12
1	33717010	8 HDR H SR .100" TIN LK	P5
1	33719148	24 FLT FLX 1.0MM CONN TH	P9

END OF BILL OF MATERIAL REPORT