

6

5

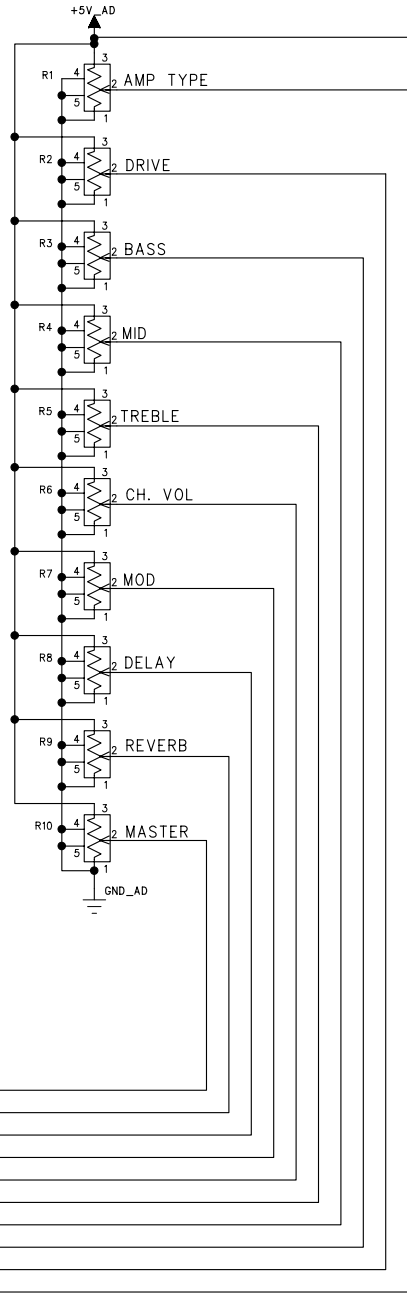
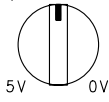
4

3

2

1

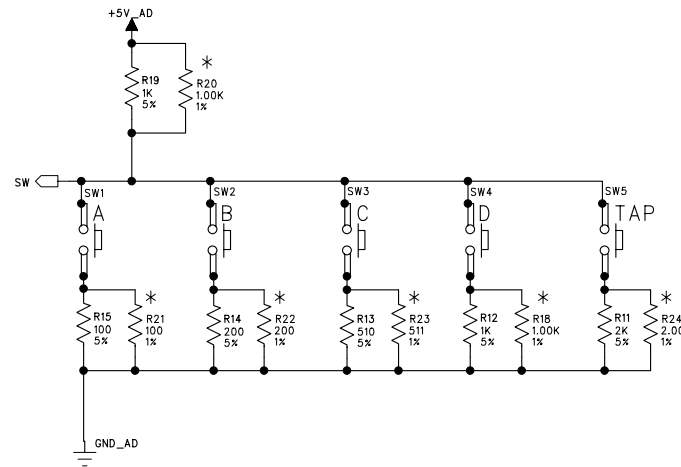
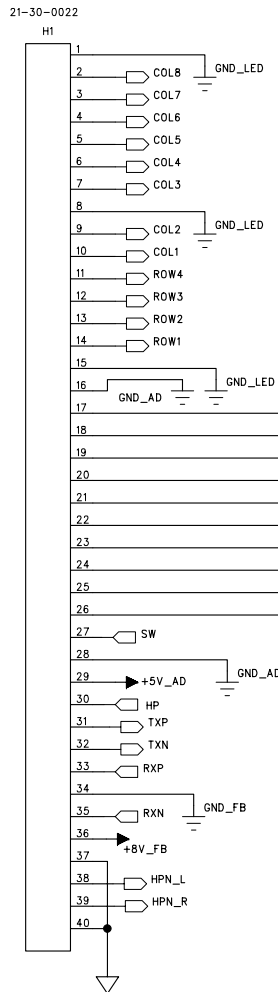
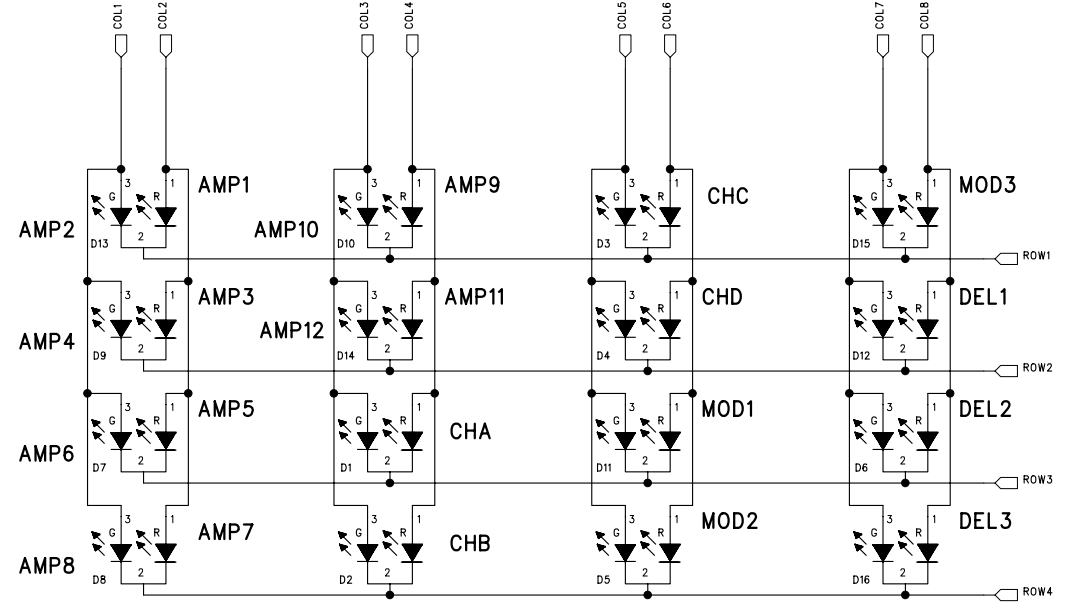
POTS ARE BACKWARDS!  
MIN: 5V  
MAX: 0V



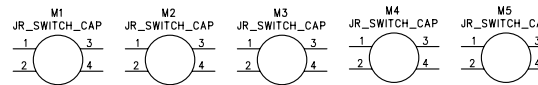
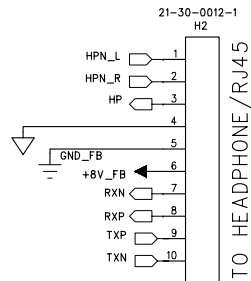
# USER INTERFACE

ECOs INCLUDED ON THIS SCHEMATIC/PCB REVISION		
ECO NO:	DATE:	DESCRIPTION:
0314803	05.22.03	Released to MFG as rev.A - (mh)

THE INFORMATION CONTAINED IN THIS DRAWING IS THE SOLE PROPERTY OF LINE 6 INC. ANY REPRODUCTION IN PART OR WHOLE WITHOUT THE WRITTEN PERMISSION OF LINE 6 INC. IS PROHIBITED



SWITCH	SW1	SW2	SW3	SW4	SW5
VOLTAGE	0.45V	0.83V	1.69V	2.50V	3.33V



\* = DO NOT INSTALL

THE INFORMATION CONTAINED IN THIS DRAWING IS THE SOLE PROPERTY OF LINE 6 INC. ANY REPRODUCTION IN PART OR WHOLE WITHOUT THE WRITTEN PERMISSION OF LINE 6 INC. IS PROHIBITED

COMPANY:		REV: A
TITLE: SPIDER II SERIES USER INTERFACE		
PROGRAM: PADS POWER LOGIC V5.0		FILENAME: S:/CLIENTS/FFD/Spider II/PCBs/User Interface - 0219/Rev A/Spider II_UI_RevA.sch
DRAWN: G. Kirtley		DATED: 05/23/03
CHECKED: Name (F.Last)		DATED: 00/00/01
SCALE: 1:1	SIZE: C	PART NUMBER: 35-00-0219
SHEET: 1		OF 2

D

C

B

A

D

C

B

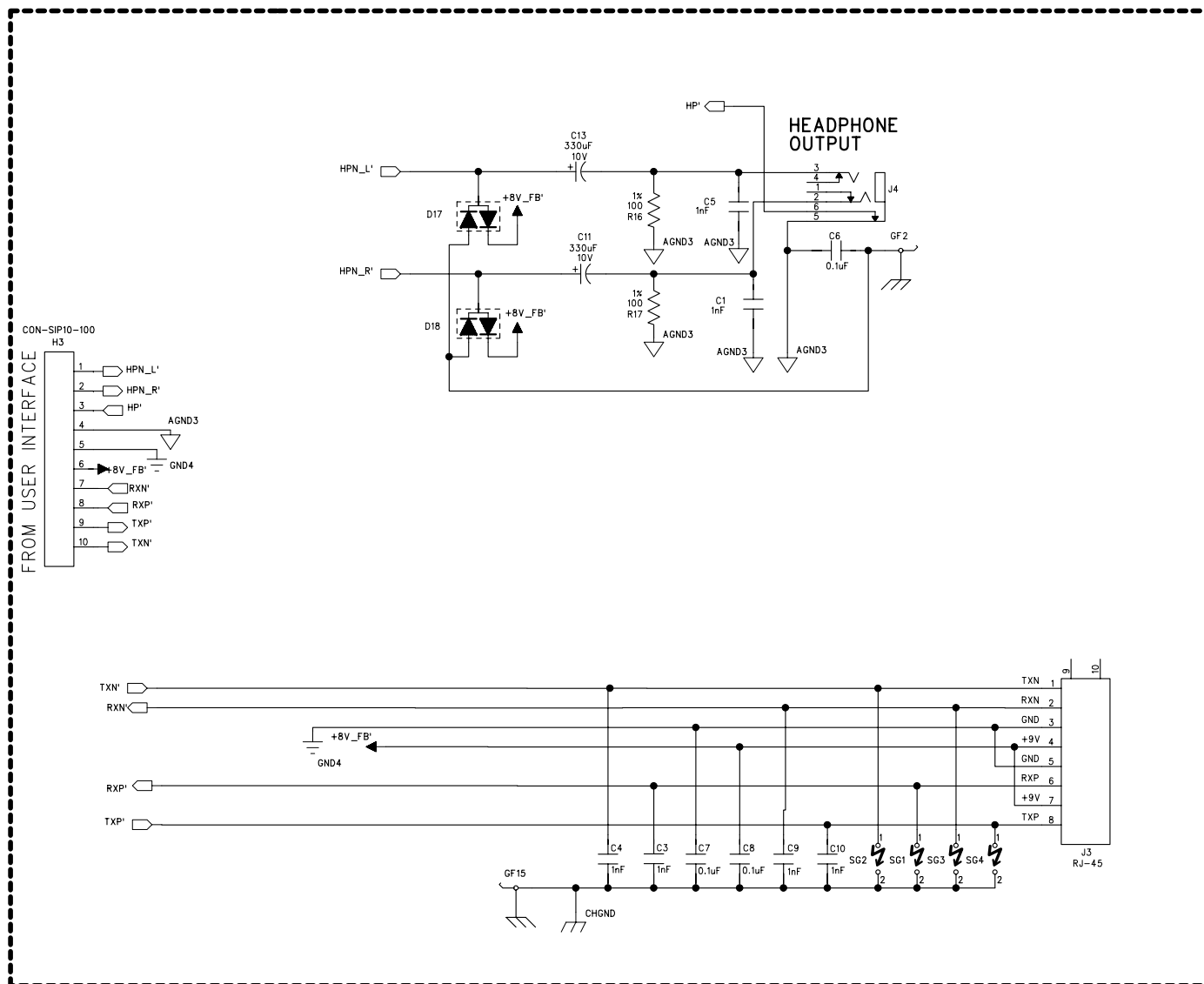
A

TO MAIN PCBA

TO HEADPHONE/RJ45

ECOs INCLUDED ON THIS SCHEMATIC/PCB REVISION		
ECO NO:	DATE:	DESCRIPTION:
0314803	05.22.03	Released to MFG as rev.A - (mh)

# HEADPHONE/RJ-45 BREAK-AWAY PCB



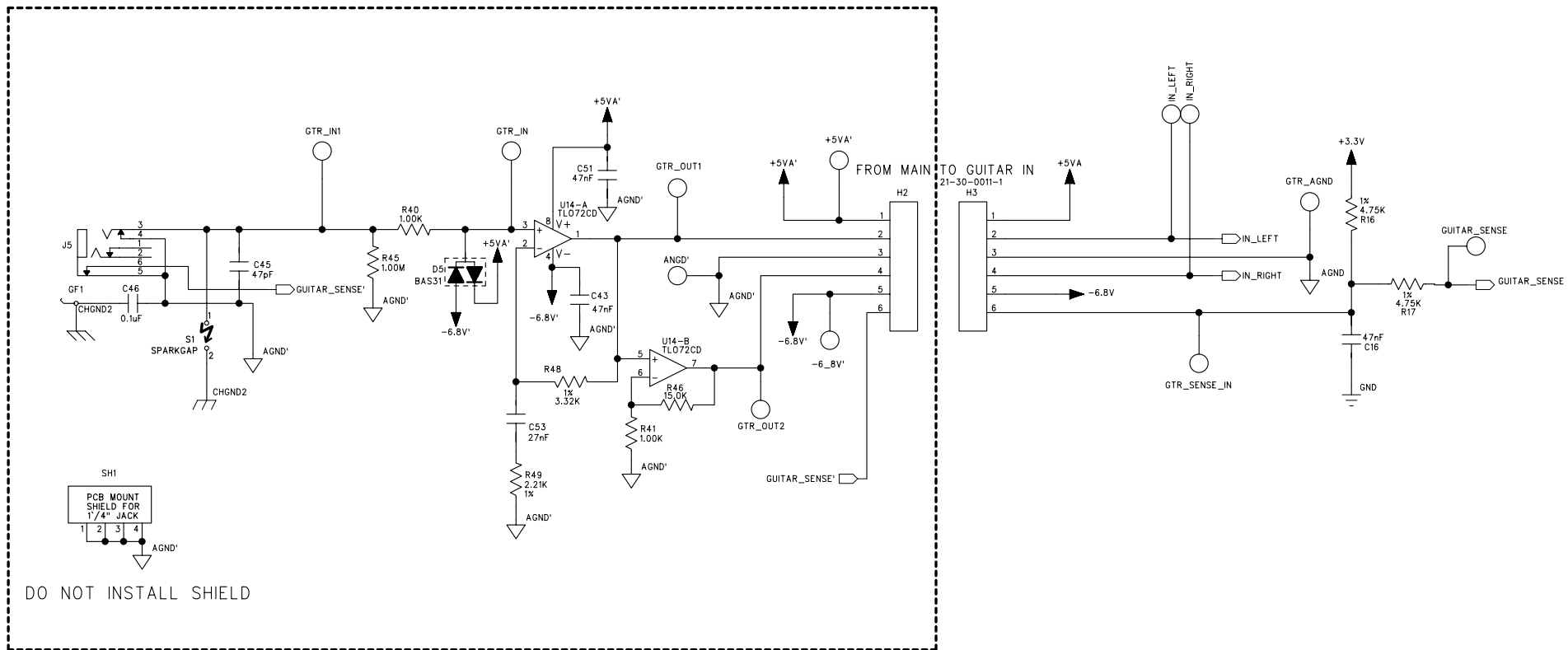
THE INFORMATION CONTAINED IN THIS DRAWING IS THE SOLE PROPERTY OF LINE 6 INC. ANY REPRODUCTION IN PART OR WHOLE WITHOUT THE WRITTEN PERMISSION OF LINE 6 INC. IS PROHIBITED

COMPANY:		LINE 6
TITLE:	SPIDER II SERIES USER INTERFACE HEADPHONE/RJ-45 BREAK-AWAY PCB	
PROGRAM:	PADS POWER LOGIC V5.0	REV: A
FILENAME:	G:/CLIENTS/FFD/Spider II/PCBs/User Interface - 0219/Rev A/Spider II_UI_RevA.sch	
SCALE:	1:1	SIZE: C
PART NUMBER:	35-00-0223	SHEET: 2 OF 2


DRAWN:	G. Kirtley	DATED:	05/23/03
CHECKED:	Name (F.Last)	DATED:	00/00/01

ECOs INCLUDED ON THIS SCHEMATIC/PCB REVISION		
ECO NO:	DATE:	DESCRIPTION:
N/A	08.26.03	Changed C58 from film to X7R.
0325801	09.15.03	Combined COMBO and HEAD FLASH p/n to 45-02-0011. - MH

# GUITAR IN BREAK-AWAY PCB



THE INFORMATION CONTAINED IN THIS DRAWING IS THE SOLE PROPERTY OF LINE 6 INC. ANY REPRODUCTION IN PART OR WHOLE WITHOUT THE WRITTEN PERMISSION OF LINE 6 INC. IS PROHIBITED

COMPANY:  LINE 6	
TITLE: <b>SPIDER II SERIES MAIN GUITAR IN BREAK-AWAY PCB</b>	
PROGRAM: PADS POWER LOGIC V5.0	REV: <b>D3</b>
FILENAME: G:/CLIENTS/FFD/Spider II/PCBs/Main - 0220/Rev D/Spider 212 Main Rev D2.sch	
SCALE: 1:1	SIZE: C
PART NUMBER: 35-00-0224	SHEET: 1 OF 5

DRAWN: G. Kirtley	DATED: 08/26/03
CHECKED: Name (F.Last)	DATED: 00/00/01

D

C

B

A

D

C

B

A

# CODEC/HEADPHONE AMP

ECOs INCLUDED ON THIS SCHEMATIC/PCB REVISION		
ECO NO:	DATE:	DESCRIPTION:

D

C

B

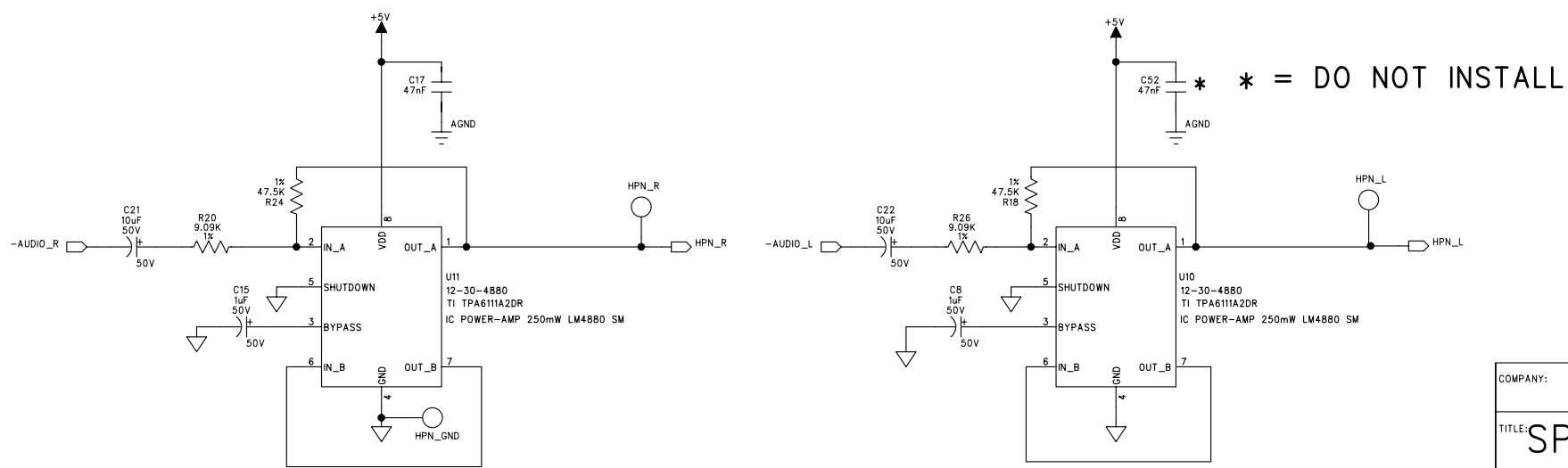
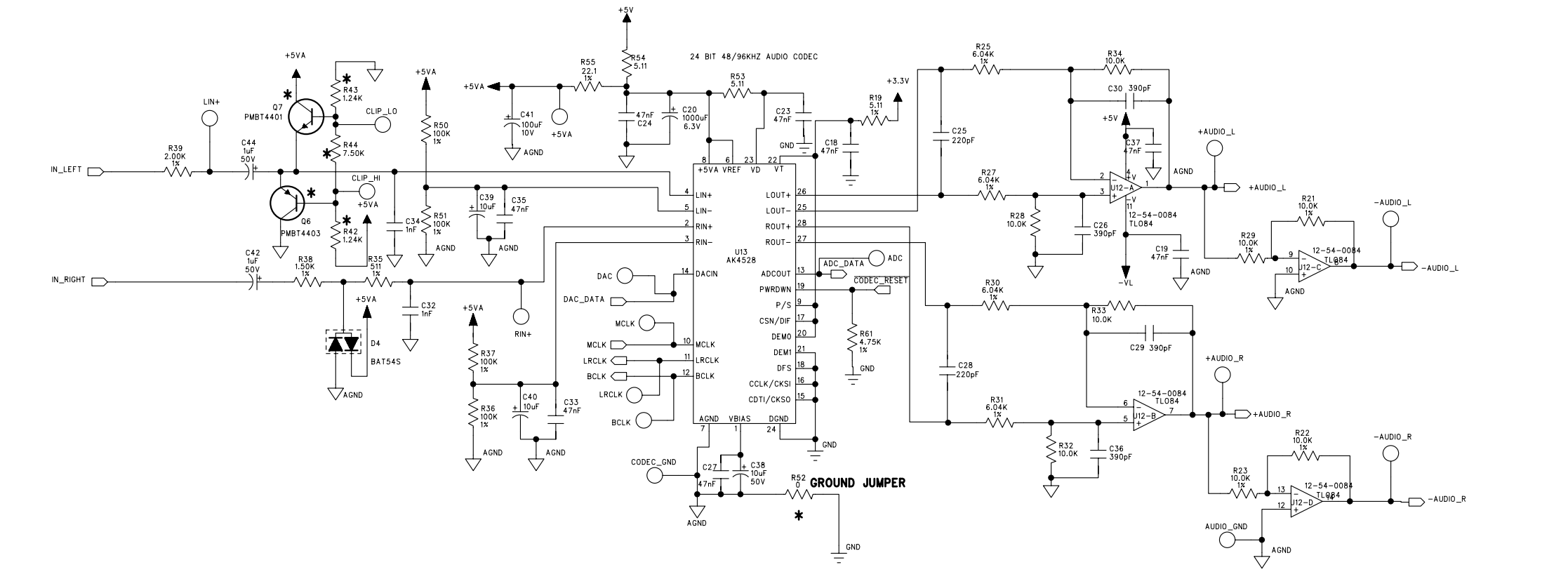
A

D

C

B

A



THE INFORMATION CONTAINED IN THIS DRAWING IS THE SOLE PROPERTY OF LINE 6 INC. ANY REPRODUCTION IN PART OR WHOLE WITHOUT THE WRITTEN PERMISSION OF LINE 6 INC. IS PROHIBITED

Headphone Amplifiers

THE INFORMATION CONTAINED IN THIS DRAWING IS THE SOLE PROPERTY OF LINE 6 INC. ANY REPRODUCTION IN PART OR WHOLE WITHOUT THE WRITTEN PERMISSION OF LINE 6 INC. IS PROHIBITED

COMPANY: <b>LINE 6</b>	
TITLE: <b>SPIDER II SERIES MAIN CODEC/HEADPHONE AMP</b>	
PROGRAM: <b>PADS POWER LOGIC V5.0</b>	REV: <b>D3</b>
FILENAME: <b>G:/CLIENTS/FFD/Spider II/PCBs/Main - 0220/Rev D/Spider 212 Main Rev D2.sch</b>	
SCALE: <b>1:1</b>	SIZE: <b>C</b>
PART NUMBER: <b>35-00-0220</b>	SHEET: <b>2 OF 5</b>

DRAWN: <b>G. Kirtley</b>	DATED: <b>08/26/03</b>
CHECKED: <b>Name (F.Last)</b>	DATED: <b>00/00/01</b>

# DIGITAL

ECOs INCLUDED ON THIS SCHEMATIC/PCB REVISION		
ECO NO:	DATE:	DESCRIPTION:

D

D

C

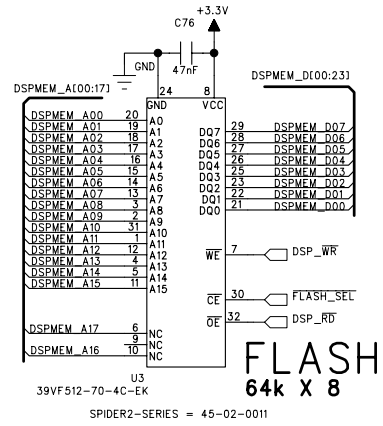
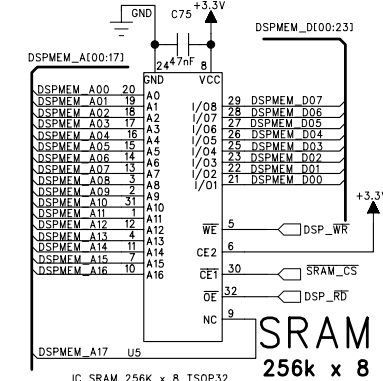
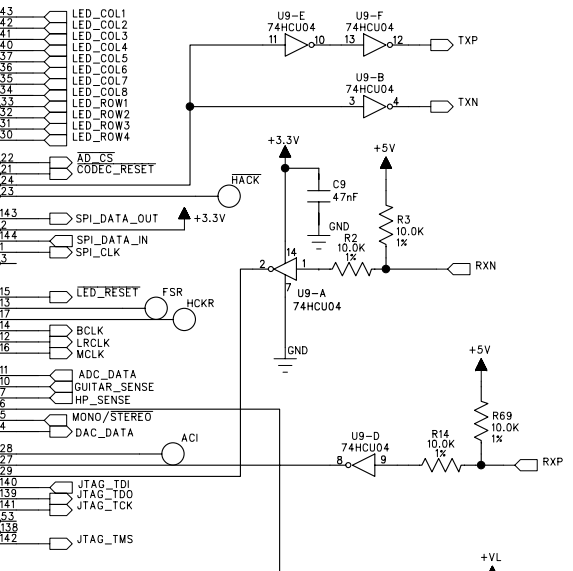
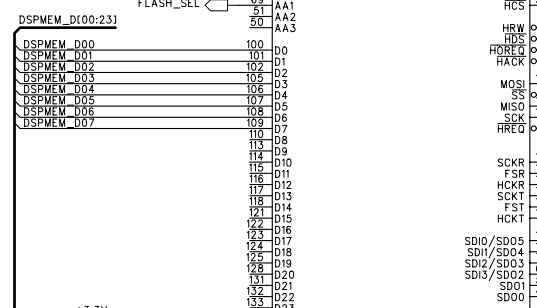
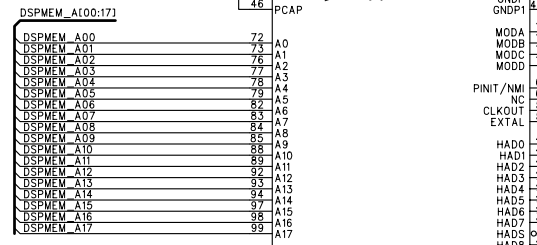
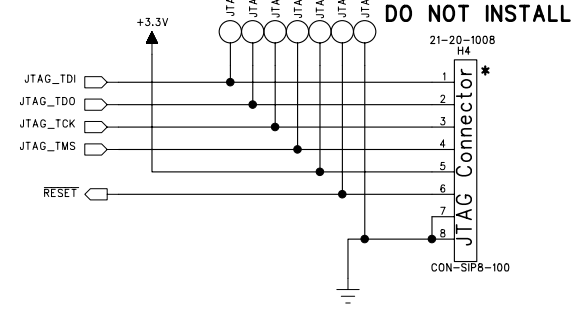
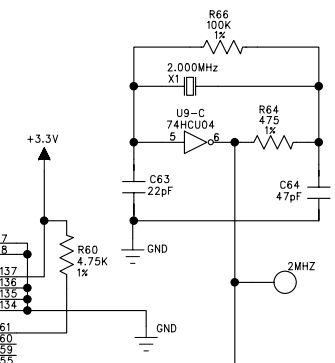
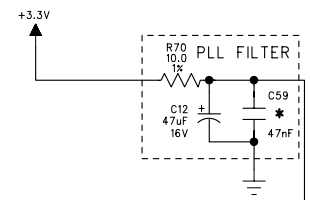
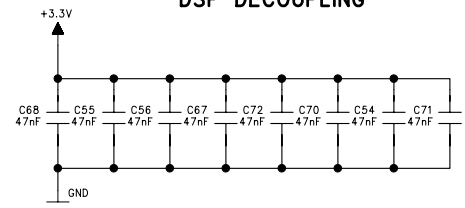
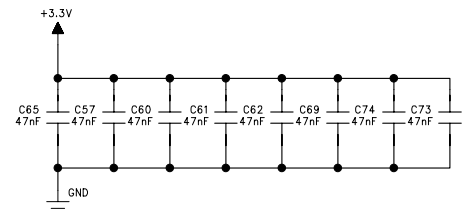
C

B

B

A

A



THE INFORMATION CONTAINED IN THIS DRAWING IS THE SOLE PROPERTY OF LINE 6 INC. ANY REPRODUCTION IN PART OR WHOLE WITHOUT THE WRITTEN PERMISSION OF LINE 6 INC. IS PROHIBITED

COMPANY: **LINE 6**

TITLE: **SPIDER II SERIES MAIN DIGITAL**

PROGRAM: **PADS POWER LOGIC V5.0**

REV: **D3**

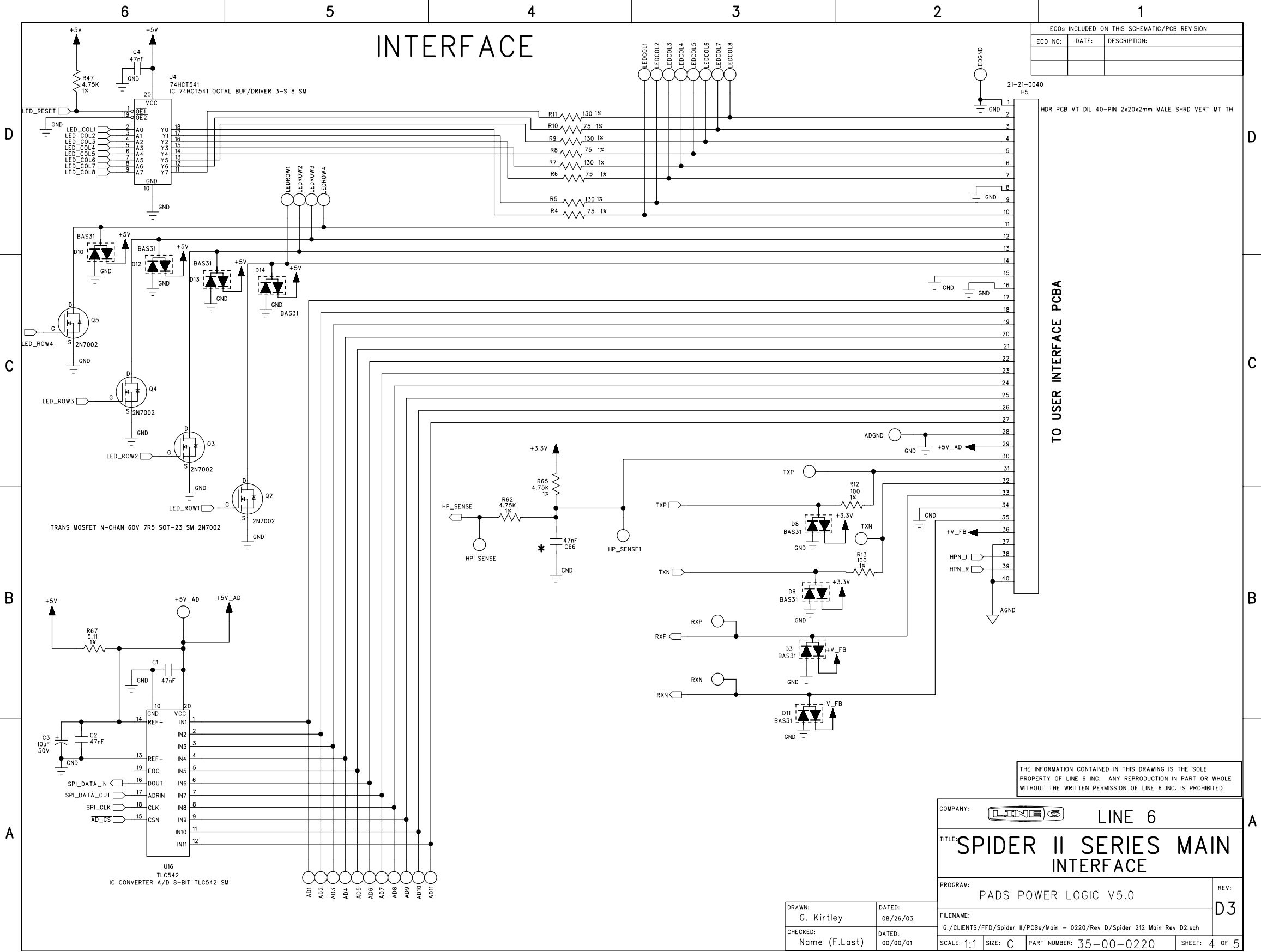
FILENAME: **G:/CLIENTS/FFD/Spider II/PCBs/Main - 0220/Rev D/Spider 212 Main Rev D2.sch**

SCALE: 1:1 SIZE: C PART NUMBER: 35-00-0220 SHEET: 3 OF 5

DRAWN: G. Kirtley	DATED: 08/26/03
CHECKED: Name (F.Last)	DATED: 00/00/01

# INTERFACE

ECOs INCLUDED ON THIS SCHEMATIC/PCB REVISION		
ECO NO:	DATE:	DESCRIPTION:



THE INFORMATION CONTAINED IN THIS DRAWING IS THE SOLE PROPERTY OF LINE 6 INC. ANY REPRODUCTION IN PART OR WHOLE WITHOUT THE WRITTEN PERMISSION OF LINE 6 INC. IS PROHIBITED

COMPANY: <b>LINE 6</b>		TITLE: <b>SPIDER II SERIES MAIN INTERFACE</b>	REV: <b>D3</b>
PROGRAM: <b>PADS POWER LOGIC V5.0</b>			
DRAWN: <b>G. Kirtley</b>		FILENAME: <b>G:/CLIENTS/FFD/Spider II/PCBs/Main - 0220/Rev D/Spider 212 Main Rev D2.sch</b>	
CHECKED: <b>Name (F.Last)</b>		SCALE: <b>1:1</b> SIZE: <b>C</b> PART NUMBER: <b>35-00-0220</b> SHEET: <b>4 OF 5</b>	

6

5

4

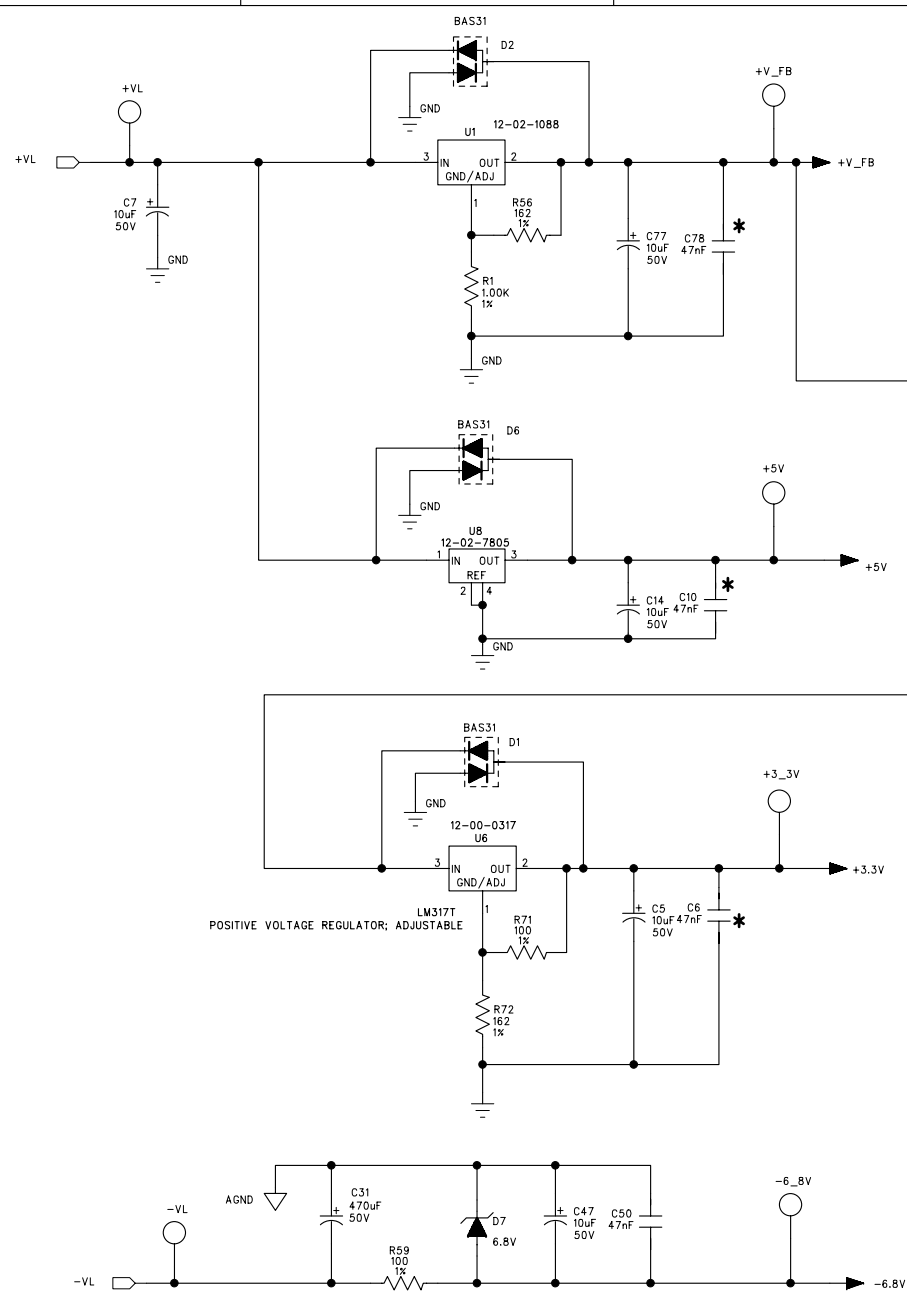
3

2

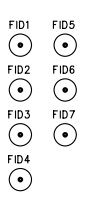
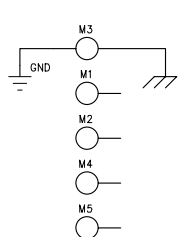
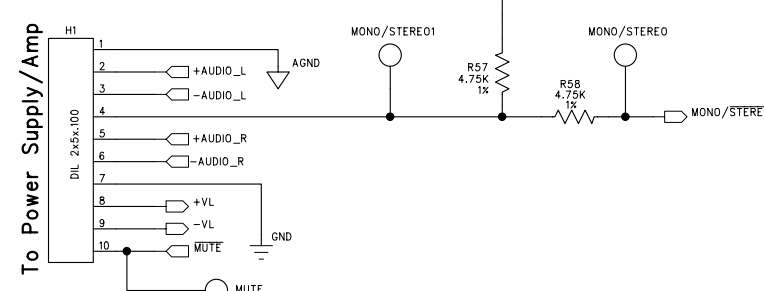
1

# POWER

ECOs INCLUDED ON THIS SCHEMATIC/PCB REVISION		
ECO NO:	DATE:	DESCRIPTION:
	7/31/03	Changed R1 = 1K, R56 = 162



GND and AGND connected at supply



THE INFORMATION CONTAINED IN THIS DRAWING IS THE SOLE PROPERTY OF LINE 6 INC. ANY REPRODUCTION IN PART OR WHOLE WITHOUT THE WRITTEN PERMISSION OF LINE 6 INC. IS PROHIBITED

COMPANY:		FILENAME: G:/CLIENTS/FFD/Spider II/PCBs/Main - 0220/Rev D/Spider 212 Main Rev D2.sch
TITLE: SPIDER II SERIES MAIN POWER		REV: D3
PROGRAM: PADS POWER LOGIC V5.0		SCALE: 1:1
DRAWN: G. Kirtley	DATED: 08/26/03	SIZE: C
CHECKED: Name (F.Last)	DATED: 00/00/01	PART NUMBER: 35-00-0220
		SHEET: 5 OF 5

D

C

B

A

D

C

B

A

6

5

4

3

2

1

POWER AMP

ECOs INCLUDED ON THIS SCHEMATIC/PCB REVISION		
ECO NO:	DATE:	DESCRIPTION:
0314803	05.22.03	Released as rev.A to MFG - (mh)

Diagram showing terminal block J1B connections. Pin 1 is OUTPUT\_L+. Pin 2 is connected to pin 3 through resistor R14 (10K), which is connected to AMP\_MUTE. Pin 7 is -AUDIO\_L. Pin 8 is +AUDIO\_L. Pin 10 is connected to a 47uF 100V capacitor (C8) to ground. Pin 11 is connected to a 47uF 100V capacitor (C10) to ground. Pin 12 is +HI.

BRI  
PCB SUPPORT CLIP  
30-51-0105

Main circuit schematic for the left channel. It features an audio input stage with resistors R10-E (20K) and R10-F (20K) connected to the non-inverting input (pin 3) of the op-amp U2 (TDA7293). The inverting input (pin 2) is connected to -HI through resistor R10-A (20K) and to -PWVS through resistor R10-B (20K). A 10uF 50V capacitor (C12) is connected between the inverting input and ground. The op-amp is powered by +VVS (pin 7) and -VVS (pin 8). Pin 13 is connected to +HI through resistor R10-G (20K) and to a 47pF capacitor (C13) to ground. Pin 14 is connected to a 10nF 100V capacitor (C15) to ground and to the output stage. The output stage consists of a bootstrap network with resistors R8 (0.47 2W) and R7 (0.47 2W) connected to the output (pin 14) and to the bootstrap input (pin 12). A 33uF 50V capacitor (C16) is connected between the bootstrap input and ground. The output is connected to OUTPUT\_L+ through resistor R6 (2.2 2W) and a 0.1uF capacitor (C9) to ground. Other components include a 10nF 100V capacitor (C14) connected to the inverting input, a 68pF capacitor (C11) connected to the bootstrap input, and a 169K 1x resistor (R9) connected to the bootstrap input.

LEFT CHANNEL

THE INFORMATION CONTAINED IN THIS DRAWING IS THE SOLE PROPERTY OF LINE 6 INC. ANY REPRODUCTION IN PART OR WHOLE WITHOUT THE WRITTEN PERMISSION OF LINE 6 INC. IS PROHIBITED

COMPANY: LINE 6

TITLE: SPIDER II POWER AMP/SUPPLY  
112 POWER AMP

PROGRAM: PADS POWER LOGIC V5.0

REV:  
A

DRAWN:  
T. BURTON

DATED:  
05/20/03

CHECKED:  
Date

DATED:  
Date

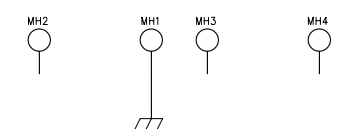
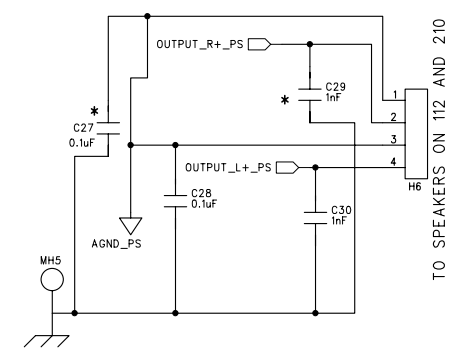
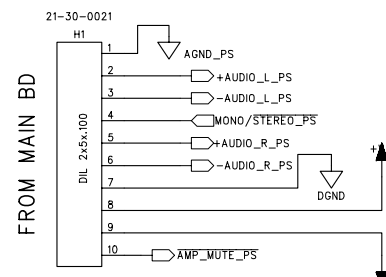
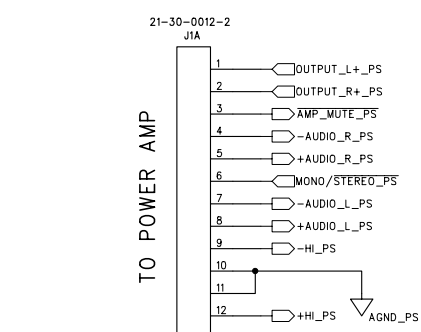
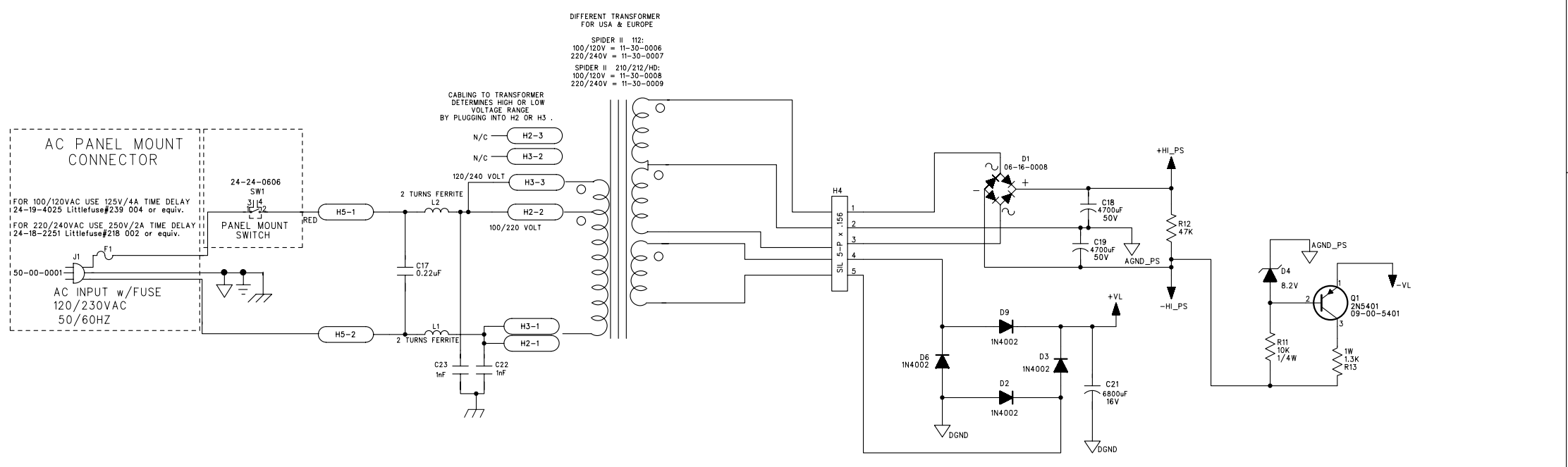
FILENAME: G:/CLIENTS/FFD/Spider II/PCBs/

SCALE: 1:1 SIZE: C PART NUMBER: 35-00-0217 SHEET: 1 OF 2



# POWER SUPPLY

ECOs INCLUDED ON THIS SCHEMATIC/PCB REVISION		
ECO NO:	DATE:	DESCRIPTION:



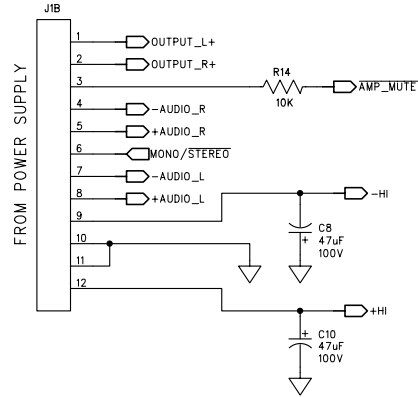
\*DO NOT INSTALL

THE INFORMATION CONTAINED IN THIS DRAWING IS THE SOLE PROPERTY OF LINE 6 INC. ANY REPRODUCTION IN PART OR WHOLE WITHOUT THE WRITTEN PERMISSION OF LINE 6 INC. IS PROHIBITED

COMPANY: <b>LINE 6</b>		REV: <b>A</b>
TITLE: <b>SPIDER II POWER AMP/SUPPLY POWER SUPPLY</b>		
PROGRAM: <b>PADS POWER LOGIC V5.0</b>		FILENAME: <b>G:/CLIENTS/FFD/Spider II/PCBs/</b>
DRAWN: <b>T. BURTON</b>	DATED: <b>05/20/03</b>	SCALE: 1:1 SIZE: C PART NUMBER: <b>35-00-0222</b>
CHECKED:	DATED:	SHEET: 2 OF 2

# POWER AMP

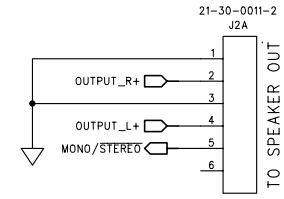
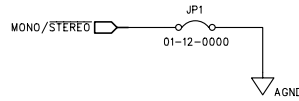
ECOs INCLUDED ON THIS SCHEMATIC/PCB REVISION		
ECO NO:	DATE:	DESCRIPTION:
0314803	05.22.03	Released to MFG as rev.A - (mh)



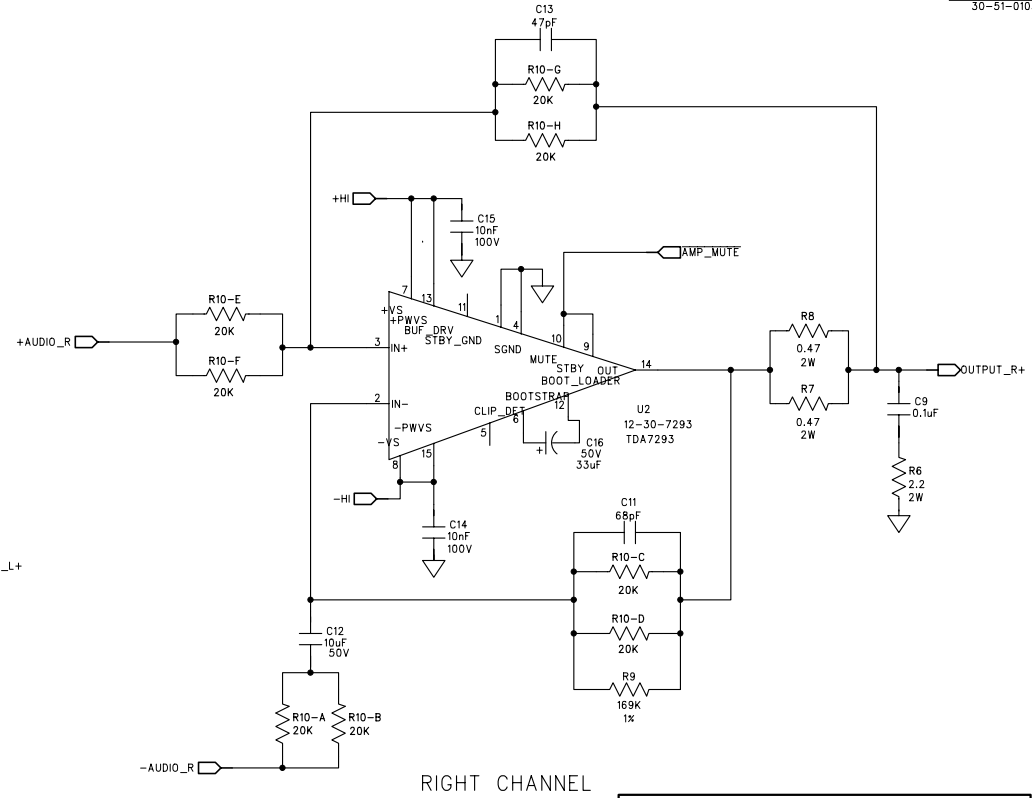
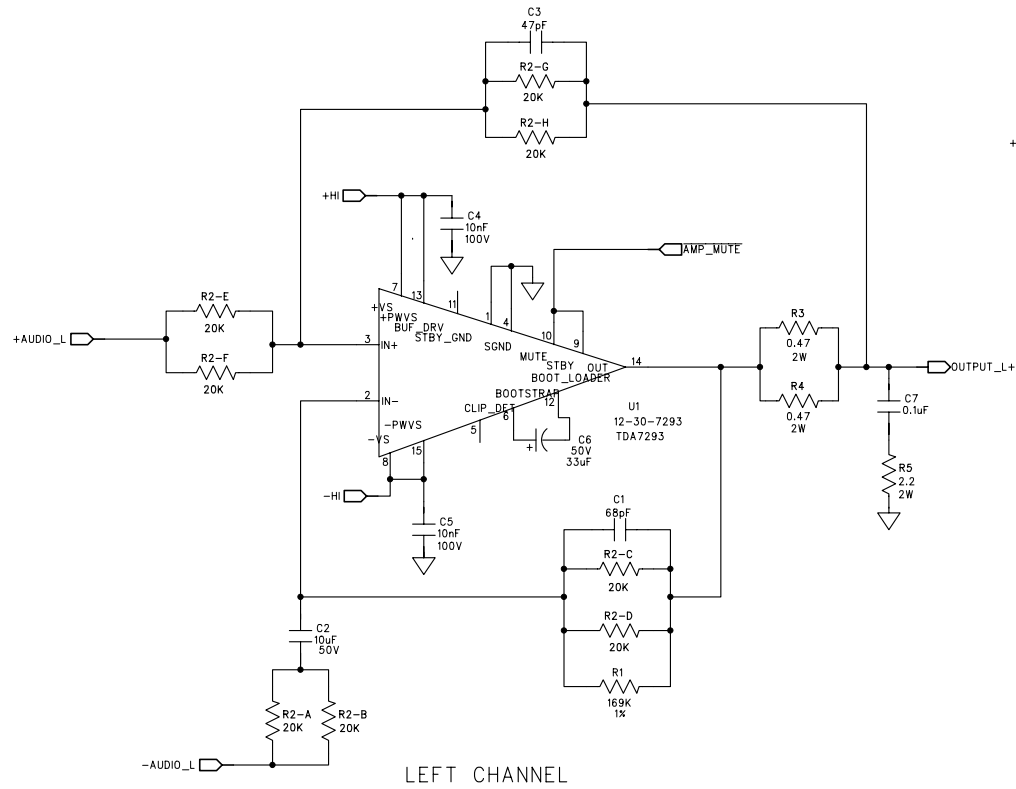
JP-1 JUMPER SELECTION

Speakers	Config.	JP-1 Status
2 X 12	STEREO	Install
2 X 10	STEREO	Install
HEAD	MONO/STEREO	Do Not Install

STEREO = LOW  
 MONO = HI  
 (PULL-UP ON SIGNAL AT MAIN BOARD)



BRI  
 PCB SUPPORT CLIP  
 30-51-0105



THE INFORMATION CONTAINED IN THIS DRAWING IS THE SOLE PROPERTY OF LINE 6 INC. ANY REPRODUCTION IN PART OR WHOLE WITHOUT THE WRITTEN PERMISSION OF LINE 6 INC. IS PROHIBITED

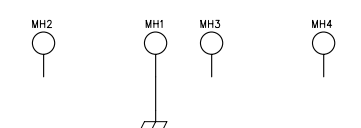
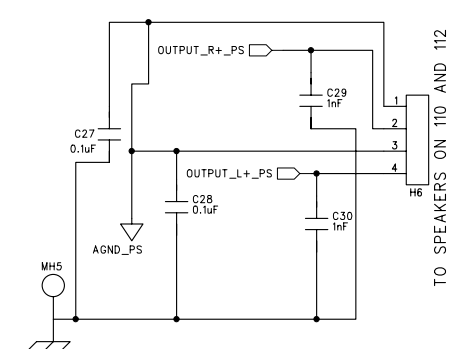
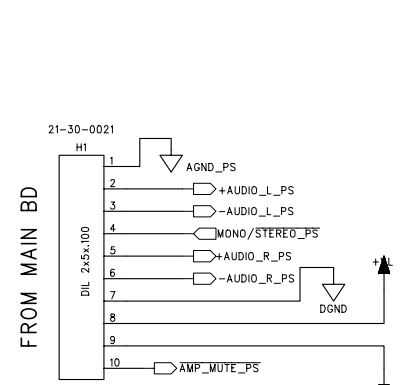
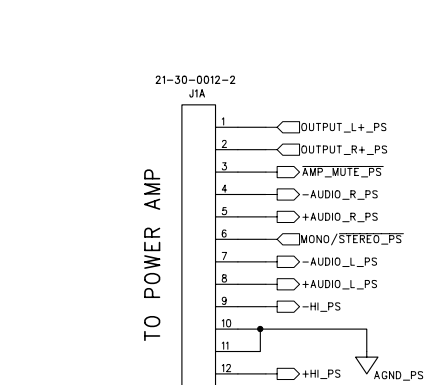
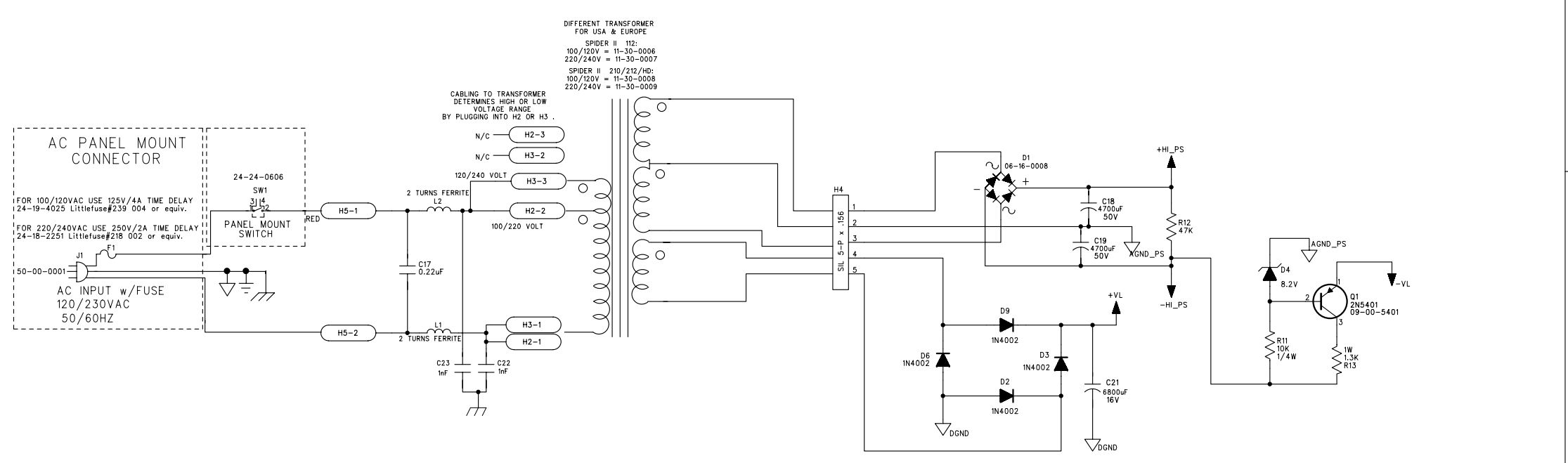
COMPANY:	LINE 6
TITLE:	SPIDER II POWER AMP/SUPPLY POWER AMP
PROGRAM:	PADS POWER LOGIC V5.0
FILENAME:	G:/CLIENTS/FFD/Spider II/PCBs/Pwr Amp_Supply_Spkr Out - 0217_0218/ Rev A/Spider II_AMP_SUPPLY_RevA.sch
SCALE: 1:1	SIZE: C
PART NUMBER: 35-00-0221	SHEET: 1 OF 3

DRAWN:	T. BURTON	DATED:	05/20/03
CHECKED:		DATED:	Date

REV:  
A

# POWER SUPPLY

ECOs INCLUDED ON THIS SCHEMATIC/PCB REVISION		
ECO NO:	DATE:	DESCRIPTION:
0314803	05.2203	Released to MFG as rev.A - (mh)



THE INFORMATION CONTAINED IN THIS DRAWING IS THE SOLE PROPERTY OF LINE 6 INC. ANY REPRODUCTION IN PART OR WHOLE WITHOUT THE WRITTEN PERMISSION OF LINE 6 INC. IS PROHIBITED

COMPANY:	LINE 6
TITLE:	SPIDER II POWER AMP/SUPPLY POWER SUPPLY
PROGRAM:	PADS POWER LOGIC V5.0
FILENAME:	G:\CLIENTS\FFD\Spider II\PCBs\Pwr Amp_Supply_Spkr Out - 0217_0218\Rev A\Spider II_AMP_SUPPLY_RevA.sch
SCALE: 1:1	SIZE: C
PART NUMBER: 35-00-0222	SHEET: 2 OF 3

DRAWN:	T. BURTON	DATED:	05/20/03
CHECKED:		DATED:	

REV: A

6

5

4

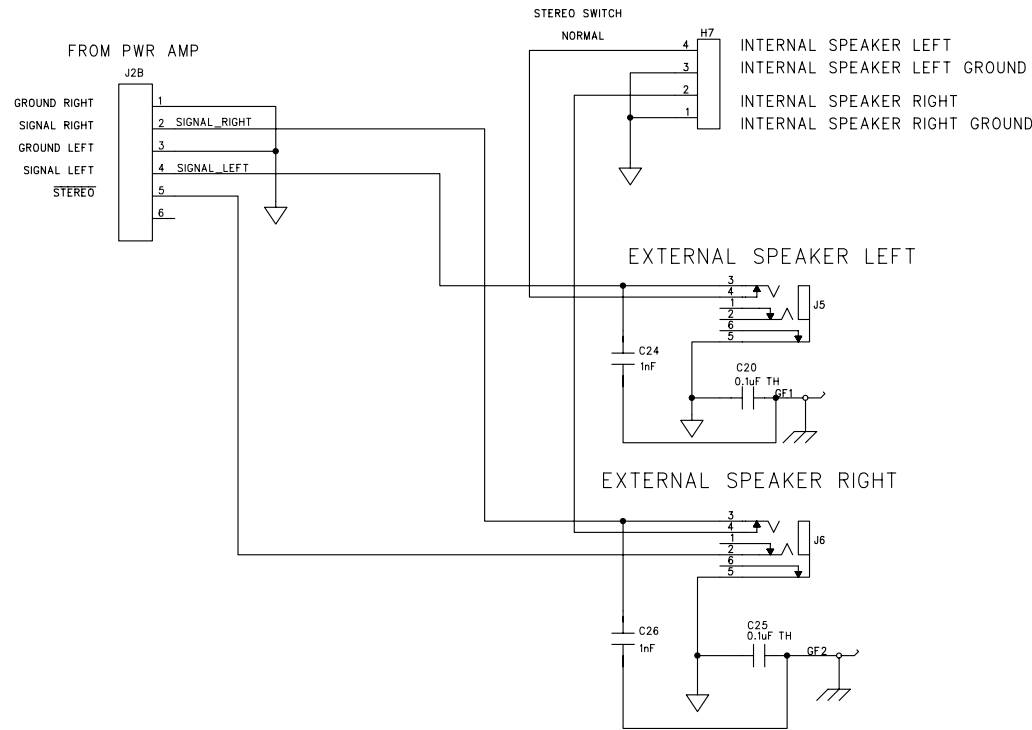
3

2

1

# SPEAKER OUTPUT PCB

ECOs INCLUDED ON THIS SCHEMATIC/PCB REVISION		
ECO NO:	DATE:	DESCRIPTION:
0314803	05.22.03	Released to MFG as rev.A - (mh)



THE INFORMATION CONTAINED IN THIS DRAWING IS THE SOLE PROPERTY OF LINE 6 INC. ANY REPRODUCTION IN PART OR WHOLE WITHOUT THE WRITTEN PERMISSION OF LINE 6 INC. IS PROHIBITED

COMPANY:  LINE 6	
TITLE: SPIDER II POWER AMP/SUPPLY SPEAKER OUT	
PROGRAM: PADS POWER LOGIC V5.0	REV: A
FILENAME: G:/CLIENTS/FFD/Spider II/PCBs/Pwr Amp_Supply_Spkr Out - 0217_0218/Rev A/Spider II_AMP_SUPPLY_RevA.sch	
DRAWN: T. BURTON	DATED: 05/20/03
CHECKED:	DATED:
SCALE: 1:1	SIZE: C
PART NUMBER: 35-00-0218	SHEET: 3 OF 3

DRAWN: T. BURTON	DATED: 05/20/03
CHECKED:	DATED:

**Line 6 Bill of Materials Report**

**Parent Item: 99-020-0615 (SPIDER 2 HD US)**

item_desc_1	comp_item_r	comp_item_desc_1	qty_p	reference_1
SPIDER 2 HD US	21-37-1160	CABLE PWR UL/CSA SJT 8.2ft BIK	1	
SPIDER 2 HD US	40-00-0012	GUIDE POP-TOP SPIDER2	1	
SPIDER 2 HD US	40-00-0018	MANUAL USER SPIDER2 SERIES	1	
SPIDER 2 HD US	40-03-2000	CARD REGISTRATION UNIVERSAL	1	ADDED PER ECO#0326102.
SPIDER 2 HD US	40-10-0059	FOAM CORNER PE-LAMINATE 1.75"	8	
SPIDER 2 HD US	40-10-0085	CARTON SHIPPING DW FOL	1	
SPIDER 2 HD US	40-20-0010	BAG PLASTIC 43"x38"x.004 CLEAR	1	
SPIDER 2 HD US	40-20-0011	BAG PLASTIC 10 x 16 2 mil	1	
SPIDER 2 HD US	40-25-0020	LABEL INSPECTION QUALITY	1	
SPIDER 2 HD US	40-25-0100	LABEL BAR CODE SERIAL NUMBER	1	
SPIDER 2 HD US	59-00-0605	ASSY UNIT COMPLETE	1	
ASSY UNIT COMPLETE	30-00-1128	SCREW 10-32 x 1-3/4 OVAL	4	CABINET TOP - CHASSIS
ASSY UNIT COMPLETE	30-03-0112	WASHER FINISHING #10 FLANGED	4	CABINET TOP - CHASSIS
ASSY UNIT COMPLETE	50-03-0004	ASSY CABINET SPIDER2-HD	1	
ASSY CABINET SPIDER2-HD	30-00-0812	SCREW w/WAX 8 x 3/4 PTB	14	CABINET ASSY - CORNER SCREWS
ASSY CABINET SPIDER2-HD	30-00-1024	SCREW 10-24 x 1IN OVAL CTSK	2	CABINET ASSY - HANDLE SCREWS
ASSY CABINET SPIDER2-HD	30-00-6839	SCREW WOOD 10-12 x 7/8" PPZ	4	CABINET ASSY - RUBBER FEET
ASSY CABINET SPIDER2-HD	30-00-8112	SCR WOOD #8 x 1 1/2" OVAL SCTK	5	CABINET ASSY - BAFFLE BOARD SIDES AND BOTTOM
ASSY CABINET SPIDER2-HD	30-03-0112	WASHER FINISHING #10 FLANGED	5	CABINET ASSY - BAFFLE BOARD SIDES AND BOTTOM
ASSY CABINET SPIDER2-HD	30-06-1024	NUT-T 10-24 X 5/16 STEEL	2	CABINET ASSY - HANDLE AND BAFFLE BOARD
ASSY CABINET SPIDER2-HD	30-28-0002	CORNER LEFT HI-DENSITY	1	CABINET ASSY - FRONT LEFT CORNER
ASSY CABINET SPIDER2-HD	30-28-0003	CORNER RIGHT HI-DENSITY	1	CABINET ASSY - FRONT RIGHT CORNER
ASSY CABINET SPIDER2-HD	30-28-0004	CORNER BACK HI-DENSITY	6	CABINET ASSY - TOP BACK AND BOTTOM
ASSY CABINET SPIDER2-HD	30-33-0029	CABINET PARTICLE BOARD 5/8IN	1	
ASSY CABINET SPIDER2-HD	30-36-0005	COVER VINYL TEXTURED BLACK	0.75	CABINET ASSY
ASSY CABINET SPIDER2-HD	30-39-0006	GRILL-CLOTH BLACK WEAVE	0.2	BAFFLE BOARD
ASSY CABINET SPIDER2-HD	30-57-0580	HANDLE/STRAP HEAVY DUTY BLACK	1	CABINET ASSY - TOP
ASSY CABINET SPIDER2-HD	30-57-0581	END CAPS, BLACK, TEXTURED FINI	2	CABINET ASSY - TOP
ASSY CABINET SPIDER2-HD	30-75-0008	FOOT RUBBER 1.50" I.D. x .75"H	4	
ASSY UNIT COMPLETE	50-04-0003-1	ASSY E/M CHASSIS SPIDER2	1	
ASSY E/M CHASSIS SPIDER2	11-30-0008	XFMR 100/120VAC 50/60Hz 86mm	1	
ASSY E/M CHASSIS SPIDER2	21-34-0044-2	CBL 18AWG 3PIN SIL .256 273.0	1	POWER SUPPLY PCBA to POWER SWITCH to AC RECEPTACLE
ASSY E/M CHASSIS SPIDER2	24-19-4025	FUSE 4A/125v	1	AC RECEPTACLE FUSE CLIP.
ASSY E/M CHASSIS SPIDER2	21-34-1015	CBL FSTN .187-RCPT/.250-F FLAG	1	AC SWITCH to AC RECEPTACLE
ASSY E/M CHASSIS SPIDER2	24-21-0002	ACTUATOR SWITCH SINGLE ROUND	5	M1-5 ON USER INTERFACE PCBA
ASSY E/M CHASSIS SPIDER2	24-24-0606	SWITCH POWER ROCKER 6A/250VAC	1	CHASSIS
ASSY E/M CHASSIS SPIDER2	30-00-0018	SCREW SELF-TAP 6-32 x .75 PFZ	4	CHASSIS - HEATSINK
ASSY E/M CHASSIS SPIDER2	30-00-0043	SCREW 6-32 x 5/16 w/LK WASH	11	GND WIRE AND MAIN AND POWER SUPPLY PCBA'S to CHASSIS

ASSY E/M CHASSIS SPIDER2	30-00-1033	SCREW 10-32 x 3/8IN SCH STL	4 F/P to CHASSIS
ASSY E/M CHASSIS SPIDER2	30-00-6103	NUT HEX M9-0.75 ZINC	10 F/P TO CHASSIS - POTS
ASSY E/M CHASSIS SPIDER2	30-06-0832	NUT .335 HEX 8-32 STL ZINC W/	4 TRANSFORMER TO CHASSIS
ASSY E/M CHASSIS SPIDER2	30-24-0003	CABLE-TIE 4" CLEAR	4
ASSY E/M CHASSIS SPIDER2	30-28-0212-1	PANEL FRONT PLASTIC GREY	1 CHASSIS
ASSY E/M CHASSIS SPIDER2	30-45-0007	KNOB SPLINE .77DIA x .76 METAL	10 FRONT PANEL - POTS
ASSY E/M CHASSIS SPIDER2	30-51-0149	CHASSIS 626 x 129.54 x 86.61mm	1
ASSY E/M CHASSIS SPIDER2	30-63-0010	FOAM w/ADHSV 26.5x 1/4x 1/16IN	5 CHASSIS
ASSY E/M CHASSIS SPIDER2	30-75-9600	GROMMET RUBBER 7/16-D x	1 CHASSIS - SPEAKER WIRES
ASSY E/M CHASSIS SPIDER2	40-25-0015	LABEL GROUND SYMBOL	1 CHASSIS - INSIDE BY GND WIRE
ASSY E/M CHASSIS SPIDER2	40-25-0018	STICKER LINE6 LOGO OVAL	1 PLASTIC FRONT PANEL
ASSY E/M CHASSIS SPIDER2	50-00-0001	ASSY RECEPTACLE-A/C w/GND	1 CHASSIS - POWER SUPPLY PCBA
ASSY RECEPTACLE-A/C w/GND	21-14-0002	JACK IEC w/FUSE MALE 3-PIN	1
ASSY RECEPTACLE-A/C w/GND	21-34-1116	Cable, Earthing	1 GROUND
ASSY E/M CHASSIS SPIDER2	50-02-0218	PCBA SPEAKER OUT SPIDER2	1
PCBA SPEAKER OUT SPIDER2	03-00-0104	CAP CER DISC 100nF 50V 20% TH	2 C20,C25
PCBA SPEAKER OUT SPIDER2	03-36-0102	CAP ESTR 1nF 100V 5% TH	2 C24,C26
PCBA SPEAKER OUT SPIDER2	21-00-6616	JACK 1/4" TRS 6-PIN PCB MT	2 J5-6
PCBA SPEAKER OUT SPIDER2	21-20-1564	HDR PCB MT SIL 4-PIN X .156	1 H7
PCBA SPEAKER OUT SPIDER2	30-18-3030	CLIP GND PCB .30x.30x.07	2 GF1-2
PCBA SPEAKER OUT SPIDER2	35-00-0218	PCB SPEAKER OUT REV.A SPIDER2	1
ASSY E/M CHASSIS SPIDER2	50-02-0219	PCBA USER INTERFACE SPIDER2	1
PCBA USER INTERFACE SPIDER2	01-12-0101	RES CARBON FILM 100R 1/4W 5%	1 R15
PCBA USER INTERFACE SPIDER2	01-12-0102	RES CARBON FILM 1K 1/4W 5% TH	2 R12,R19
PCBA USER INTERFACE SPIDER2	01-12-0201	RES CARBON FILM 200R 1/4W 5%	1 R14
PCBA USER INTERFACE SPIDER2	01-12-0202	RES CARBON FILM 2.0K 1/4W 5%	1 R11
PCBA USER INTERFACE SPIDER2	01-12-0511	RES CARBON FILM 510R 1/4W 5%	1 R13
PCBA USER INTERFACE SPIDER2	01-48-6103	POT MONO 10KB LINEAR TAPER	10 R1-10
PCBA USER INTERFACE SPIDER2	03-00-0104	CAP CER DISC 100nF 50V 20% TH	1 C12
PCBA USER INTERFACE SPIDER2	18-06-0002	LED RED/GRN 3-P COM CATH	16 D1-16
PCBA USER INTERFACE SPIDER2	21-30-0012-1	CBL SIL 10-PIN 2.54 x 76.2mm	1 H2 on user interface PCB to H3 on break-away PCB
PCBA USER INTERFACE SPIDER2	21-30-0022	CAB DIL 40 PIN .100 PITCH 3.0	1 H1
PCBA USER INTERFACE SPIDER2	24-31-1105	SWITCH TACT 6mm SQ 4-PIN TH	5 SW1-5
PCBA USER INTERFACE SPIDER2	30-15-0018	SPACER LED .560 LG	16 D1-16
PCBA USER INTERFACE SPIDER2	35-00-0219	PCB USER INTERFACE REV.A	1
PCBA MAIN SPIDER2-HD	45-02-0012	IC PROGRAMMED FLASH	1
PCBA MAIN SPIDER2-HD	50-02-0220	PCBA MAIN (non-programmed)	1
PCBA MAIN (non-programmed)	01-24-1000	RES 100R 1% 0805	4 R12-13,R59,R71 R56 removed per ECO#321204
PCBA MAIN (non-programmed)	01-24-1001	RES 1.00K 1% 0805	1 R1 added per ECO 0321204
PCBA MAIN (non-programmed)	01-24-1002	RES 10.0K 1% 0805	14 R2-3,R14-15,R21-23,R28-29,R32-34,R68-69
PCBA MAIN (non-programmed)	01-24-1003	RES 100K 1% 0805	5 R36-37,R50-51,R66
PCBA MAIN (non-programmed)	01-24-10R0	RES 10.0R 1% 0805	1 R70
PCBA MAIN (non-programmed)	01-24-1300	RES 130R 1% 0805	4 R5,R7,R9,R11

PCBA MAIN (non-programmed)	01-24-1501	RES 1.50K 1% 0805	1 R38
PCBA MAIN (non-programmed)	01-24-1620	RES 162R 1% 0805	2 R56,R72 r56 added per ECO 321204
PCBA MAIN (non-programmed)	01-24-2001	RES 2.00K 1% 0805	1 R39
PCBA MAIN (non-programmed)	01-24-22R1	RES 22.1R 1% 0805	1 R55
PCBA MAIN (non-programmed)	01-24-4750	RES 475R 1% 0805	1 R64
PCBA MAIN (non-programmed)	01-24-4751	RES 4.75K 1% 0805	10 R16-17,R47,R57-58,R60-63,R65
PCBA MAIN (non-programmed)	01-24-4752	RES 47.5K 1% 0805	2 R18,R24
PCBA MAIN (non-programmed)	01-24-5110	RES 511R 1% 0805	1 R35
PCBA MAIN (non-programmed)	01-24-5R11	RES 5.11R 1% 0805	4 R19,R53-54,R67
PCBA MAIN (non-programmed)	01-24-6041	RES 6.04K 1% 0805	4 R25,R27,R30-31
PCBA MAIN (non-programmed)	01-24-75R0	RES 75R 1% 0805	4 R4,R6,R8,R10
PCBA MAIN (non-programmed)	01-24-9091	RES 9.09K 1% 0805	2 R20,R26
PCBA MAIN (non-programmed)	03-10-0107	CAP ELEC 100uF 10V 20% RADIAL	1 C41
PCBA MAIN (non-programmed)	03-10-6108	CAP ELEC 1000uF 6.3V 20%	1 C20
PCBA MAIN (non-programmed)	03-12-0476	CAP ELEC 47uF 16V 20% RADIAL	1 C12
PCBA MAIN (non-programmed)	03-12-1477	CAP ELEC 470uF 16V 20% RADIAL	1 C31
PCBA MAIN (non-programmed)	03-18-0105	CAP ELEC 1uF 50V 20% RADIAL	4 C8,C15,C42,C44
PCBA MAIN (non-programmed)	03-18-0106	CAP ELEC 10uF 50V 20% RADIAL	11 C3,C5,C7,C14,C21-22,C38-40,C47,C77
PCBA MAIN (non-programmed)	03-46-0332	CAP X7R 3.3nF 50V 20% 1206	1 C58
PCBA MAIN (non-programmed)	03-50-0220	CAP NPO 22pF 50V 20% 0805	1 C63
PCBA MAIN (non-programmed)	03-50-0470	CAP NPO 47pF 50V 10% 0805	1 C64
PCBA MAIN (non-programmed)	03-52-0102	CAP X7R 1nF 50V 20% 0805	2 C32,C34
PCBA MAIN (non-programmed)	03-52-0221	CAP X7R 220pF 50V 20% 0805	4 C25,C28,C48-49
PCBA MAIN (non-programmed)	03-52-0391	CAP X7R 390pF 50V 20% 0805	4 C26,C29-30,C36
PCBA MAIN (non-programmed)	03-52-0473	CAP X7R 47nF 50V 20% 0805	33 C1-2,C4,C9,C16-19,C23-24,C27,C33,C35,C37,C50,C54-57,C60-62,C65,C67-76
PCBA MAIN (non-programmed)	06-23-0054	DIODE SCHOTTKY DUAL 30V 200mA	1 D4
PCBA MAIN (non-programmed)	06-28-8468	DIODE ZENER 6.8V 5% 350mW	1 D7
PCBA MAIN (non-programmed)	06-34-0031	DIODE GEN PUR DUAL 120V	11 D1-3,D6,D8-14
PCBA MAIN (non-programmed)	09-06-7002	TRANS MOSFET N-CHAN 60V 7R5	5 Q1-5
PCBA MAIN (non-programmed)	11-00-2000	CRYSTAL 2.000MHz HC49 TH	1 X1
PCBA MAIN (non-programmed)	12-00-0317	IC VREG ADJ 1.2-25V 1.5 AMP	1 U6
PCBA MAIN (non-programmed)	12-02-1088	IC REG ADJ TO-220 TH LM1086	1 U1
PCBA MAIN (non-programmed)	12-02-7805	IC REG +5v 1.5 Amp TH	1 U8
PCBA MAIN (non-programmed)	12-30-4880	IC POWER-AMP 250mW TI	2 U10-11
PCBA MAIN (non-programmed)	12-54-0084	IC OP AMP QUAD TL084CD SM	1 U12
PCBA MAIN (non-programmed)	12-64-0542	IC CONVERTER A/D 8-BIT TLC542	1 U16
PCBA MAIN (non-programmed)	12-64-4528	IC CONVERTER 24B 48/96KHz	1 U13
PCBA MAIN (non-programmed)	15-62-1004	IC 74HCU04 UNBUFFERED HEX	1 U9
PCBA MAIN (non-programmed)	15-64-0541	IC 74HCT 541 OCTAL BUF/DRIVER	1 U4
PCBA MAIN (non-programmed)	15-72-0001	IC SRAM-256K x 8 TSOP32 SM	1 U5
PCBA MAIN (non-programmed)	15-78-0003	IC FLASH 512K Bit (64Kx8) 70nS	1 U3
PCBA MAIN (non-programmed)	15-86-6362	IC DSP 24-BIT TQFP144 SM	1 U7
PCBA MAIN (non-programmed)	15-92-5809	IC RESET 3.3V 5% ACTIVE-LOW	1 U2

PCBA MAIN (non-programmed)	21-20-1008	HDR PCB MT SIL 8-PIN 1x8x .100	1 H4
PCBA MAIN (non-programmed)	21-20-2010	HDR PCB MT DIL 10-PIN 2x5x100	1 H1
PCBA MAIN (non-programmed)	21-21-0040	HDR PCB MT DIL 40-PIN 2x20x2mm	1 H5
PCBA MAIN (non-programmed)	21-30-0011-1	CAB RIBBON SIL 6-PIN	1 H3 on main to H2 on guitar in breakaway
PCBA MAIN (non-programmed)	30-00-0607	SCREW 6-32 x 7/16IN w/LK WASH	2 U1, U6
PCBA MAIN (non-programmed)	30-12-0632	STANDOFF HEX .250 6-32 F-F 1IN	2 U1,U6
PCBA MAIN (non-programmed)	30-15-0007	INSULATOR XTAL 4.9mm C-C	1 INSTALL UNDER X1
PCBA MAIN (non-programmed)	35-00-0220	PCB MAIN REV.D SPIDER2 SERIES	1
ASSY E/M CHASSIS SPIDER2	50-02-0220-1	PCBA MAIN SPIDER2-COMBO SERIES	1 ADDED PER ECO#0325801.
PCBA MAIN SPIDER2-COMBO SERI	45-02-0011	IC PROGRAMMED FLASH v1.00	1
PCBA MAIN SPIDER2-COMBO SERI	50-02-0220	PCBA MAIN (non-programmed)	1
ASSY E/M CHASSIS SPIDER2	50-02-0221-1	PCBA POWER AMP w/HEATSINK	1
PCBA POWER AMP w/HEATSINK	30-00-0010	SCREW 8-32 x 9/16 SKT-CAP	2 HEATSINK CLAMPS
PCBA POWER AMP w/HEATSINK	30-00-0028	SCREW 8-32 x 5/16" SHCS	1 SUPPORT BRACKET BR1
PCBA POWER AMP w/HEATSINK	30-03-0002	WASHER #8 .293 x .174x .040	3 (2) CLAMPS (1) SUPPORT BRKT
PCBA POWER AMP w/HEATSINK	30-06-0007	NUT .344 HEX 8-32 STEEL ZINC	3 (2) CLAMPS (1) SUPPORT BRKT
PCBA POWER AMP w/HEATSINK	30-51-0059-3	HEATSINK 4.0 IN LG AL ALY BLK	1 POWER AMP PCBA
PCBA POWER AMP w/HEATSINK	30-51-0073	CLAMP HEATSINK TO-220	2 HEATSINK - POWER AMPS
PCBA POWER AMP w/HEATSINK	30-51-0105	BRKT SUPPORT .565 x .530 x	1 BR1
PCBA POWER AMP w/HEATSINK	30-63-0006	PAD THERMAL 6mil 25mm x 30mm	2 HEATSINK - POWER AMP
PCBA POWER AMP w/HEATSINK	50-02-0221	PCBA POWER AMP SPIDER2	1
PCBA POWER AMP SPIDER2	01-12-0000	RES CARBON FILM 0R 1/4W 5% TH	1 JP1.
PCBA POWER AMP SPIDER2	01-00-0103	RES 10K 5% 0805	1 R14
PCBA POWER AMP SPIDER2	01-23-02R2	RES METAL OXIDE 2.2R 3W 5% TH	2 R5,R6. Added per ECO#0336302.
PCBA POWER AMP SPIDER2	01-22-0R47	RES METAL OXIDE 0.47R 2W 5% TH	4 R3-4,R7-8
PCBA POWER AMP SPIDER2	01-24-1693	RES 169K 1% 0805	2 R1,R9
PCBA POWER AMP SPIDER2	01-60-0203	RES NETWORK ISOLATED 20K	2 R2,R10
PCBA POWER AMP SPIDER2	03-18-0336	CAP ELEC 33uF 50V 20% RADIAL	2 C6,C16
PCBA POWER AMP SPIDER2	03-18-1106	CAP ELEC 10uF 50V 20% BI-POLAR	2 C2,C12
PCBA POWER AMP SPIDER2	03-22-0476	CAP ELEC 47uF 100V 20% RADIAL	2 C8,C10
PCBA POWER AMP SPIDER2	03-24-0564	CAP MET-POLY 0.56uF 100VDC 5%	2 C7,C9. Added per ECO#0336302.
PCBA POWER AMP SPIDER2	03-52-0470	CAP X7R 47pF 50V 20% 0805	2 C3,C13
PCBA POWER AMP SPIDER2	03-52-0680	CAP X7R 68pF 50V 20% 0805	2 C1,C11
PCBA POWER AMP SPIDER2	03-52-1103	CAP X7R 10nF 100V 10% 0805	4 C4-5,C14-15
PCBA POWER AMP SPIDER2	12-30-7293	IC POWER-AMP 100W TDA7293	2 U1-2
PCBA POWER AMP SPIDER2	21-30-0011-2	CAB RIBBON SIL 6-PIN	1 J2A on power amp to J2B on speaker out
PCBA POWER AMP SPIDER2	35-00-0221	PCB POWER AMP REV.A SPIDER2	1 BREAKAWAY OF PWR SUPPLY
ASSY E/M CHASSIS SPIDER2	50-02-0222	PCBA POWER SUPPLY SPIDER2	1
PCBA POWER SUPPLY SPIDER2	01-12-0103	RES CARBON FILM 10K 1/4W 5% TH	1 R11
PCBA POWER SUPPLY SPIDER2	01-12-0473	RES CARBON FILM 47K 1/4W 5% TH	1 R12
PCBA POWER SUPPLY SPIDER2	01-20-0132	RES METAL OXIDE 1.3K 1W 5% TH	1 R13
PCBA POWER SUPPLY SPIDER2	03-00-0104	CAP CER DISC 100nF 50V 20% TH	2 C27-28
PCBA POWER SUPPLY SPIDER2	03-12-0688	CAP ELEC 6800uF 16V 20% RADIAL	1 C21



PCBA POWER SUPPLY SPIDER2	03-18-0478	CAP ELEC 4700uF 50V 20% SNAPIN	2 C18-19
PCBA POWER SUPPLY SPIDER2	03-36-0102	CAP ESTR 1nF 100V 5% TH	2 C29-30
PCBA POWER SUPPLY SPIDER2	03-41-0224	CAP X-CAP 0.22uF 275VAC 20%	0 C17
PCBA POWER SUPPLY SPIDER2	03-75-0102	CAP Y-CAP 1nF 250VAC 20% TH	2 C22-23
PCBA POWER SUPPLY SPIDER2	06-04-4002	DIODE SMALL-SIGNAL 100V 30A	4 D2-3,D6,D9
PCBA POWER SUPPLY SPIDER2	06-08-0820	DIODE ZENER 8.2V 5% 500mW	1 D4
PCBA POWER SUPPLY SPIDER2	06-16-0008	DIODE BRIDGE-RECT 8A 600V	1 D1
PCBA POWER SUPPLY SPIDER2	09-00-5401	TRANS PNP SMALL-SIGNAL 2N5401	1 Q1
PCBA POWER SUPPLY SPIDER2	11-10-2020	CHOKE WIDE BAND 1-5 TURNS	2 L1-2
PCBA POWER SUPPLY SPIDER2	21-20-1564	HDR PCB MT SIL 4-PIN X .156	1 H6
PCBA POWER SUPPLY SPIDER2	21-20-1565	HDR PCB MT SIL 5-PIN X .156	1 H4
PCBA POWER SUPPLY SPIDER2	21-20-3122	HDR PCB MT SIL 2-PIN x 7.92mm	1 H5
PCBA POWER SUPPLY SPIDER2	21-20-3123	HDR PCB MT SIL 3-PIN X 7.92mm	2 H2-3
PCBA POWER SUPPLY SPIDER2	21-30-0012-2	CBL SIL 12-PIN 2.54 x 76.2mm	1 J1A on power supply PCB to J1B on power amp break-away
PCBA POWER SUPPLY SPIDER2	21-30-0021	CAB DIL 10 PIN .100 PITCH 3.0	1 H1
PCBA POWER SUPPLY SPIDER2	35-00-0222	PCB POWER SUPPLY REV.A	1
ASSY E/M CHASSIS SPIDER2	50-02-0223	PCBA HEADPHONE/RJ45 SPIDER2	1
PCBA HEADPHONE/RJ45 SPIDER2	01-24-1000	RES 100R 1% 0805	2 R16-17
PCBA HEADPHONE/RJ45 SPIDER2	03-10-0331	CAP ELEC 330uF 10V 20% RADIAL	2 C11,C13
PCBA HEADPHONE/RJ45 SPIDER2	03-52-0102	CAP X7R 1nF 50V 20% 0805	6 C1,C3-5,C9-10
PCBA HEADPHONE/RJ45 SPIDER2	03-52-0104	CAP X7R 0.1uF 50V 20% 0805	3 C6-8
PCBA HEADPHONE/RJ45 SPIDER2	06-34-0031	DIODE GEN PUR DUAL 120V	2 D17-18
PCBA HEADPHONE/RJ45 SPIDER2	21-00-6616	JACK 1/4" TRS 6-PIN PCB MT	1 J4
PCBA HEADPHONE/RJ45 SPIDER2	21-16-0045	JACK RJ-45 8-PIN FEMALE	1 J3
PCBA HEADPHONE/RJ45 SPIDER2	30-18-3030	CLIP GND PCB .30x.30x.07	2 GF2,GF15
PCBA HEADPHONE/RJ45 SPIDER2	35-00-0223	PCB HEADPHONE/RJ45 REV.A	1 BREAKAWAY OF USER INTERFACE PCBA
ASSY E/M CHASSIS SPIDER2	50-02-0224	PCBA GUITAR INPUT SPIDER2	1
PCBA GUITAR INPUT SPIDER2	01-24-1001	RES 1.00K 1% 0805	2 R40-41
PCBA GUITAR INPUT SPIDER2	01-24-1004	RES 1.00M 1% 0805	0 R45
PCBA GUITAR INPUT SPIDER2	01-24-1502	RES 15.0K 1% 0805	1 R46
PCBA GUITAR INPUT SPIDER2	01-24-2211	RES 2.21K 1% 0805	1 R49
PCBA GUITAR INPUT SPIDER2	01-24-3321	RES 3.32K 1% 0805	1 R48
PCBA GUITAR INPUT SPIDER2	03-24-0273	CAP MET-POLY 27nF 50V 5% TH	1 C53
PCBA GUITAR INPUT SPIDER2	03-52-0104	CAP X7R 0.1uF 50V 20% 0805	1 C46
PCBA GUITAR INPUT SPIDER2	03-52-0470	CAP X7R 47pF 50V 20% 0805	1 C45
PCBA GUITAR INPUT SPIDER2	03-52-0473	CAP X7R 47nF 50V 20% 0805	2 C43,C51
PCBA GUITAR INPUT SPIDER2	06-34-0031	DIODE GEN PUR DUAL 120V	1 D5
PCBA GUITAR INPUT SPIDER2	12-54-0072	IC OP-AMP DUAL TL072CD SM	1 U14
PCBA GUITAR INPUT SPIDER2	21-00-6616	JACK 1/4" TRS 6-PIN PCB MT	1 J5
PCBA GUITAR INPUT SPIDER2	30-18-3030	CLIP GND PCB .30x.30x.07	1 GF1
PCBA GUITAR INPUT SPIDER2	35-00-0224	PCB GUITAR INPUT REV.D	1 BREAKAWAY OF MAIN PCBA

**Line 6 Bill of Materials Report**

**Parent Item: 99-010-1615 (SPIDER 2 212 US)**

item_desc_1	comp_item_no	comp_item_desc_1	qty_1	reference_1
SPIDER 2 212 US	21-37-1160	CABLE PWR UL/CSA SJT 8.2ft Blk	1	
SPIDER 2 212 US	40-00-0012	GUIDE POP-TOP SPIDER2	1	
SPIDER 2 212 US	40-00-0018	MANUAL USER SPIDER2 SERIES	1	
SPIDER 2 212 US	40-03-2000	CARD REGISTRATION UNIVERSAL	1	ADDED PER ECO#0326102.
SPIDER 2 212 US	40-10-0006B	FOAM CORNER PE-LAM 1.5pcf	4	
SPIDER 2 212 US	40-10-0006T	FOAM CORNER PE-LAM 1.5pcf TOP	4	
SPIDER 2 212 US	40-10-0067	CARTON GIFT SPIDER2-212	1	
SPIDER 2 212 US	40-10-0086	CARTON SHIPPING 212-COMBO	1	
SPIDER 2 212 US	40-20-0010	BAG PLASTIC 43"x38"x.004 CLEAR	1	
SPIDER 2 212 US	40-20-0011	BAG PLASTIC 10 x 16 2 mil	1	
SPIDER 2 212 US	40-25-0020	LABEL INSPECTION QUALITY	1	
SPIDER 2 212 US	40-25-0100	LABEL BAR CODE SERIAL NUMBER	1	
SPIDER 2 212 US	59-00-1605	ASSY UNIT COMPLETE SPIDER2 212	1	
ASSY UNIT COMPLETE SPIDER2 212	11-20-1208	SPEAKER 12" 8-OHM CELESTION	2	CABINET GRILL
ASSY UNIT COMPLETE SPIDER2 212	21-34-0020-2	CBL SIL 4-PIN .156 x 15 IN	1	SPEAKER OUT PCBA (H7) to SPEAKERS.
ASSY UNIT COMPLETE SPIDER2 212	30-00-0033	SCREW 10-24 x7/8 TRUSS HD PHH	8	SPEAKERS
ASSY UNIT COMPLETE SPIDER2 212	30-00-0048	SCREW 10-32 x 1-IN OVAL CTSK	2	CABINET SIDES - CHASSIS
ASSY UNIT COMPLETE SPIDER2 212	30-00-1128	SCREW 10-32 x 1-3/4 OVAL	4	CABINET TOP - CHASSIS
ASSY UNIT COMPLETE SPIDER2 212	30-03-0112	WASHER FINISHING #10 FLANGED	6	CABINET TOP & SIDES - CHASSIS
ASSY UNIT COMPLETE SPIDER2 212	50-03-0003	ASSY CABINET SPIDER2	1	ADDED PER ECO#0326101.
ASSY CABINET SPIDER2	30-00-0812	SCREW w/WAX 8 x 3/4 PTB	14	CABINET ASSY-CORNER SCREWS.
ASSY CABINET SPIDER2	30-00-1024	SCREW 10-24 x 1IN OVAL CTSK	2	CABINET ASSY-HANDLE SCREWS.
ASSY CABINET SPIDER2	30-00-8112	SCR WOOD #8 x 1 1/2" OVAL SCTK	3	CABINET ASSY-BAFFLE BOARD SIDES AND BOTTOM.
ASSY CABINET SPIDER2	30-03-0112	WASHER FINISHING #10 FLANGED	3	CABINET ASSY-BAFFLE BOARD SIDES AND BOTTOM.
ASSY CABINET SPIDER2	30-06-1024	NUT-T 10-24 X 5/16 STEEL	10	CABINET ASSY-HANDLE & BAFFLE BOARD.
ASSY CABINET SPIDER2	30-28-0002	CORNER LEFT HI-DENSITY	1	CABINET ASSY-FRONT LEFT CORNER.
ASSY CABINET SPIDER2	30-28-0003	CORNER RIGHT HI-DENSITY	1	CABINET ASSY-FRONT RIGHT CORNER.
ASSY CABINET SPIDER2	30-28-0004	CORNER BACK HI-DENSITY	6	CABINET ASSY-TOP BACK AND BOTTOM.
ASSY CABINET SPIDER2	30-33-0030	CABINET PARTICLE BOARD 5/8IN	1	
ASSY CABINET SPIDER2	30-36-0005	COVER VINYL TEXTURED BLACK	0.9	CABINET ASSY.
ASSY CABINET SPIDER2	30-39-0006	GRILL-CLOTH BLACK WEAVE	1	BAFFLE BOARD.
ASSY CABINET SPIDER2	30-57-0580	HANDLE/STRAP HEAVY DUTY BLAC	1	CABINET ASSY-TOP.
ASSY CABINET SPIDER2	30-57-0581	END CAPS, BLACK, TEXTURED FINI	2	CABINET ASSY-TOP.
ASSY CABINET ALDERWOOD 26.19 x	30-00-0824	SCREW #6 PBS x 1.5" PPB	3	
ASSY CABINET ALDERWOOD 26.19 x	30-00-0858	SCREW #8 x 5/8IN PHIL-TRUSS	14	
ASSY CABINET ALDERWOOD 26.19 x	30-03-0112	WASHER FINISHING #10 FLANGED	3	
ASSY CABINET ALDERWOOD 26.19 x	30-06-1024	NUT-T 10-24 X 5/16 STEEL	10	
ASSY CABINET ALDERWOOD 26.19 x	30-28-0002	CORNER LEFT HI-DENSITY	1	

ASSY CABINET ALDERWOOD 26.19 x	30-28-0003	CORNER RIGHT HI-DENSITY	1
ASSY CABINET ALDERWOOD 26.19 x	30-28-0004	CORNER BACK HI-DENSITY	6
ASSY CABINET ALDERWOOD 26.19 x	30-36-0001	VINYL, BLACK-BRONCO	0.93
ASSY CABINET ALDERWOOD 26.19 x	30-39-0001	GRILL-CLOTH BLACK #BY4584-22	0.28
ASSY UNIT COMPLETE SPIDER2 212	50-04-0003-1	ASSY E/M CHASSIS SPIDER2	1
ASSY E/M CHASSIS SPIDER2	11-30-0008	XFMR 100/120VAC 50/60Hz 86mm	1
ASSY E/M CHASSIS SPIDER2	21-34-0044-2	CBL 18AWG 3PIN SIL .256 273.0	1 POWER SUPPLY PCBA to POWER SWITCH to AC RECEPTACLE
ASSY E/M CHASSIS SPIDER2	24-19-4025	FUSE 4A/125v	1 AC RECEPTACLE FUSE CLIP.
ASSY E/M CHASSIS SPIDER2	21-34-1015	CBL FSTN .187-RCPT/.250-F FLAG	1 AC SWITCH to AC RECEPTACLE
ASSY E/M CHASSIS SPIDER2	24-21-0002	ACTUATOR SWITCH SINGLE ROUND	5 M1-5 ON USER INTERFACE PCBA
ASSY E/M CHASSIS SPIDER2	24-24-0606	SWITCH POWER ROCKER 6A/250VA	1 CHASSIS
ASSY E/M CHASSIS SPIDER2	30-00-0018	SCREW SELF-TAP 6-32 x .75 PFZ	4 CHASSIS - HEATSINK
ASSY E/M CHASSIS SPIDER2	30-00-0043	SCREW 6-32 x 5/16 w/LK WASH	11 GND WIRE AND MAIN AND POWER SUPPLY PCBA'S to CHASSIS
ASSY E/M CHASSIS SPIDER2	30-00-1033	SCREW 10-32 x 3/8IN SCH STL	4 F/P to CHASSIS
ASSY E/M CHASSIS SPIDER2	30-00-6103	NUT HEX M9-0.75 ZINC	10 F/P TO CHASSIS - POTS
ASSY E/M CHASSIS SPIDER2	30-06-0832	NUT .335 HEX 8-32 STL ZINC W/	4 TRANSFORMER TO CHASSIS
ASSY E/M CHASSIS SPIDER2	30-24-0003	CABLE-TIE 4" CLEAR	4
ASSY E/M CHASSIS SPIDER2	30-28-0212-1	PANEL FRONT PLASTIC GREY	1 CHASSIS
ASSY E/M CHASSIS SPIDER2	30-45-0007	KNOB SPLINE .77DIA x .76 METAL	10 FRONT PANEL - POTS
ASSY E/M CHASSIS SPIDER2	30-51-0149	CHASSIS 626 x 129.54 x 86.61mm	1
ASSY E/M CHASSIS SPIDER2	30-63-0010	FOAM w/ADHSV 26.5x 1/4x 1/16IN	5 CHASSIS
ASSY E/M CHASSIS SPIDER2	30-75-9600	GROMMET RUBBER 7/16-D x	1 CHASSIS - SPEAKER WIRES
ASSY E/M CHASSIS SPIDER2	40-25-0015	LABEL GROUND SYMBOL	1 CHASSIS - INSIDE BY GND WIRE
ASSY E/M CHASSIS SPIDER2	40-25-0018	STICKER LINE6 LOGO OVAL	1 PLASTIC FRONT PANEL
ASSY E/M CHASSIS SPIDER2	50-00-0001	ASSY RECEPTACLE-A/C w/GND	1 CHASSIS - POWER SUPPLY PCBA
ASSY RECEPTACLE-A/C w/GND	21-14-0002	JACK IEC w/FUSE MALE 3-PIN	1
ASSY RECEPTACLE-A/C w/GND	21-34-1116	Cable, Earthing	1 GROUND
ASSY E/M CHASSIS SPIDER2	50-02-0218	PCBA SPEAKER OUT SPIDER2	1
PCBA SPEAKER OUT SPIDER2	03-00-0104	CAP CER DISC 100nF 50V 20% TH	2 C20,C25
PCBA SPEAKER OUT SPIDER2	03-36-0102	CAP ESTR 1nF 100V 5% TH	2 C24,C26
PCBA SPEAKER OUT SPIDER2	21-00-6616	JACK 1/4" TRS 6-PIN PCB MT	2 J5-6
PCBA SPEAKER OUT SPIDER2	21-20-1564	HDR PCB MT SIL 4-PIN X .156	1 H7
PCBA SPEAKER OUT SPIDER2	30-18-3030	CLIP GND PCB .30x.30x.07	2 GF1-2
PCBA SPEAKER OUT SPIDER2	35-00-0218	PCB SPEAKER OUT REV.A SPIDER2	1
ASSY E/M CHASSIS SPIDER2	50-02-0219	PCBA USER INTERFACE SPIDER2	1
PCBA USER INTERFACE SPIDER2	01-12-0101	RES CARBON FILM 100R 1/4W 5%	1 R15
PCBA USER INTERFACE SPIDER2	01-12-0102	RES CARBON FILM 1K 1/4W 5% TH	2 R12,R19
PCBA USER INTERFACE SPIDER2	01-12-0201	RES CARBON FILM 200R 1/4W 5%	1 R14
PCBA USER INTERFACE SPIDER2	01-12-0202	RES CARBON FILM 2.0K 1/4W 5%	1 R11
PCBA USER INTERFACE SPIDER2	01-12-0511	RES CARBON FILM 510R 1/4W 5%	1 R13
PCBA USER INTERFACE SPIDER2	01-48-6103	POT MONO 10KB LINEAR TAPER	10 R1-10
PCBA USER INTERFACE SPIDER2	03-00-0104	CAP CER DISC 100nF 50V 20% TH	1 C12
PCBA USER INTERFACE SPIDER2	18-06-0002	LED RED/GRN 3-P COM CATH	16 D1-16

PCBA USER INTERFACE SPIDER2	21-30-0012-1	CBL SIL 10-PIN 2.54 x 76.2mm	1 H2 on user interface PCB to H3 on break-away PCB
PCBA USER INTERFACE SPIDER2	21-30-0022	CAB DIL 40 PIN .100 PITCH 3.0	1 H1
PCBA USER INTERFACE SPIDER2	24-31-1105	SWITCH TACT 6mm SQ 4-PIN TH	5 SW1-5
PCBA USER INTERFACE SPIDER2	30-15-0018	SPACER LED .560 LG	16 D1-16
PCBA USER INTERFACE SPIDER2	35-00-0219	PCB USER INTERFACE REV.A	1
PCBA MAIN SPIDER2-HD	45-02-0012	IC PROGRAMMED FLASH	1
PCBA MAIN SPIDER2-HD	50-02-0220	PCBA MAIN (non-programmed)	1
PCBA MAIN (non-programmed)	01-24-1000	RES 100R 1% 0805	4 R12-13,R59,R71 R56 removed per ECO#321204
PCBA MAIN (non-programmed)	01-24-1001	RES 1.00K 1% 0805	1 R1 added per ECO 0321204
PCBA MAIN (non-programmed)	01-24-1002	RES 10.0K 1% 0805	14 R2-3,R14-15,R21-23,R28-29,R32-34,R68-69
PCBA MAIN (non-programmed)	01-24-1003	RES 100K 1% 0805	5 R36-37,R50-51,R66
PCBA MAIN (non-programmed)	01-24-10R0	RES 10.0R 1% 0805	1 R70
PCBA MAIN (non-programmed)	01-24-1300	RES 130R 1% 0805	4 R5,R7,R9,R11
PCBA MAIN (non-programmed)	01-24-1501	RES 1.50K 1% 0805	1 R38
PCBA MAIN (non-programmed)	01-24-1620	RES 162R 1% 0805	2 R56,R72 r56 added per ECO 321204
PCBA MAIN (non-programmed)	01-24-2001	RES 2.00K 1% 0805	1 R39
PCBA MAIN (non-programmed)	01-24-22R1	RES 22.1R 1% 0805	1 R55
PCBA MAIN (non-programmed)	01-24-4750	RES 475R 1% 0805	1 R64
PCBA MAIN (non-programmed)	01-24-4751	RES 4.75K 1% 0805	10 R16-17,R47,R57-58,R60-63,R65
PCBA MAIN (non-programmed)	01-24-4752	RES 47.5K 1% 0805	2 R18,R24
PCBA MAIN (non-programmed)	01-24-5110	RES 511R 1% 0805	1 R35
PCBA MAIN (non-programmed)	01-24-5R11	RES 5.11R 1% 0805	4 R19,R53-54,R67
PCBA MAIN (non-programmed)	01-24-6041	RES 6.04K 1% 0805	4 R25,R27,R30-31
PCBA MAIN (non-programmed)	01-24-75R0	RES 75R 1% 0805	4 R4,R6,R8,R10
PCBA MAIN (non-programmed)	01-24-9091	RES 9.09K 1% 0805	2 R20,R26
PCBA MAIN (non-programmed)	03-10-0107	CAP ELEC 100uF 10V 20% RADIAL	1 C41
PCBA MAIN (non-programmed)	03-10-6108	CAP ELEC 1000uF 6.3V 20%	1 C20
PCBA MAIN (non-programmed)	03-12-0476	CAP ELEC 47uF 16V 20% RADIAL	1 C12
PCBA MAIN (non-programmed)	03-12-1477	CAP ELEC 470uF 16V 20% RADIAL	1 C31
PCBA MAIN (non-programmed)	03-18-0105	CAP ELEC 1uF 50V 20% RADIAL	4 C8,C15,C42,C44
PCBA MAIN (non-programmed)	03-18-0106	CAP ELEC 10uF 50V 20% RADIAL	11 C3,C5,C7,C14,C21-22,C38-40,C47,C77
PCBA MAIN (non-programmed)	03-46-0332	CAP X7R 3.3nF 50V 20% 1206	1 C58
PCBA MAIN (non-programmed)	03-50-0220	CAP NPO 22pF 50V 20% 0805	1 C63
PCBA MAIN (non-programmed)	03-50-0470	CAP NPO 47pF 50V 10% 0805	1 C64
PCBA MAIN (non-programmed)	03-52-0102	CAP X7R 1nF 50V 20% 0805	2 C32,C34
PCBA MAIN (non-programmed)	03-52-0221	CAP X7R 220pF 50V 20% 0805	4 C25,C28,C48-49
PCBA MAIN (non-programmed)	03-52-0391	CAP X7R 390pF 50V 20% 0805	4 C26,C29-30,C36
PCBA MAIN (non-programmed)	03-52-0473	CAP X7R 47nF 50V 20% 0805	33 C1-2,C4,C9,C16-19,C23-24,C27,C33,C35,C37,C50,C54-57,C60-62,C65,C67-76
PCBA MAIN (non-programmed)	06-23-0054	DIODE SCHOTTKY DUAL 30V 200mA	1 D4
PCBA MAIN (non-programmed)	06-28-8468	DIODE ZENER 6.8V 5% 350mW	1 D7
PCBA MAIN (non-programmed)	06-34-0031	DIODE GEN PUR DUAL 120V	11 D1-3,D6,D8-14
PCBA MAIN (non-programmed)	09-06-7002	TRANS MOSFET N-CHAN 60V 7R5	5 Q1-5
PCBA MAIN (non-programmed)	11-00-2000	CRYSTAL 2.000MHz HC49 TH	1 X1

PCBA MAIN (non-programmed)	12-00-0317	IC VREG ADJ 1.2-25V 1.5 AMP	1 U6	
PCBA MAIN (non-programmed)	12-02-1088	IC REG ADJ TO-220 TH LM1086	1 U1	
PCBA MAIN (non-programmed)	12-02-7805	IC REG +5v 1.5 Amp TH	1 U8	
PCBA MAIN (non-programmed)	12-30-4880	IC POWER-AMP 250mW TI	2 U10-11	
PCBA MAIN (non-programmed)	12-54-0084	IC OP AMP QUAD TL084CD SM	1 U12	
PCBA MAIN (non-programmed)	12-64-0542	IC CONVERTER A/D 8-BIT TLC542	1 U16	
PCBA MAIN (non-programmed)	12-64-4528	IC CONVERTER 24B 48/96KHz	1 U13	
PCBA MAIN (non-programmed)	15-62-1004	IC 74HCU04 UNBUFFERED HEX	1 U9	
PCBA MAIN (non-programmed)	15-64-0541	IC 74HCT 541 OCTAL BUF/DRIVER	1 U4	
PCBA MAIN (non-programmed)	15-72-0001	IC SRAM-256K x 8 TSOP32 SM	1 U5	
PCBA MAIN (non-programmed)	15-78-0003	IC FLASH 512K Bit (64Kx8) 70nS	1 U3	
PCBA MAIN (non-programmed)	15-86-6362	IC DSP 24-BIT TQFP144 SM	1 U7	
PCBA MAIN (non-programmed)	15-92-5809	IC RESET 3.3V 5% ACTIVE-LOW	1 U2	
PCBA MAIN (non-programmed)	21-20-1008	HDR PCB MT SIL 8-PIN 1x8x .100	1 H4	
PCBA MAIN (non-programmed)	21-20-2010	HDR PCB MT DIL 10-PIN 2x5x100	1 H1	
PCBA MAIN (non-programmed)	21-21-0040	HDR PCB MT DIL 40-PIN 2x20x2mm	1 H5	
PCBA MAIN (non-programmed)	21-30-0011-1	CAB RIBBON SIL 6-PIN	1 H3 on main to H2 on guitar in breakaway	
PCBA MAIN (non-programmed)	30-00-0607	SCREW 6-32 x 7/16IN w/LK WASH	2 U1, U6	
PCBA MAIN (non-programmed)	30-12-0632	STANDOFF HEX .250 6-32 F-F 1IN	2 U1,U6	
PCBA MAIN (non-programmed)	30-15-0007	INSULATOR XTAL 4.9mm C-C	1 INSTALL UNDER X1	
PCBA MAIN (non-programmed)	35-00-0220	PCB MAIN REV.D SPIDER2 SERIES	1	
ASSY E/M CHASSIS SPIDER2	50-02-0220-1	PCBA MAIN SPIDER2-COMBO SERIE	1 ADDED PER ECO#0325801.	
PCBA MAIN SPIDER2-COMBO SERIES	45-02-0011	IC PROGRAMMED FLASH v1.00	1	
PCBA MAIN SPIDER2-COMBO SERIES	50-02-0220	PCBA MAIN (non-programmed)	1	
ASSY E/M CHASSIS SPIDER2	50-02-0221-1	PCBA POWER AMP w/HEATSINK	1	
PCBA POWER AMP w/HEATSINK	30-00-0010	SCREW 8-32 x 9/16 SKT-CAP	2 HEATSINK CLAMPS	
PCBA POWER AMP w/HEATSINK	30-00-0028	SCREW 8-32 x 5/16" SHCS	1 SUPPORT BRACKET BR1	
PCBA POWER AMP w/HEATSINK	30-03-0002	WASHER #8 .293 x .174x .040	3 (2) CLAMPS (1) SUPPORT BRKT	
PCBA POWER AMP w/HEATSINK	30-06-0007	NUT .344 HEX 8-32 STEEL ZINC	3 (2) CLAMPS (1) SUPPORT BRKT	
PCBA POWER AMP w/HEATSINK	30-51-0059-3	HEATSINK 4.0 IN LG AL ALY BLK	1 POWER AMP PCBA	
PCBA POWER AMP w/HEATSINK	30-51-0073	CLAMP HEATSINK TO-220	2 HEATSINK - POWER AMPS	
PCBA POWER AMP w/HEATSINK	30-51-0105	BRKT SUPPORT .565 x .530 x	1 BR1	
PCBA POWER AMP w/HEATSINK	30-63-0006	PAD THERMAL 6mil 25mm x 30mm	2 HEATSINK - POWER AMP	
PCBA POWER AMP w/HEATSINK	50-02-0221	PCBA POWER AMP SPIDER2	1	
PCBA POWER AMP SPIDER2	01-12-0000	RES CARBON FILM 0R 1/4W 5% TH	1 JP1.	
PCBA POWER AMP SPIDER2	01-00-0103	RES 10K 5% 0805	1 R14	
PCBA POWER AMP SPIDER2	01-23-02R2	RES METAL OXIDE 2.2R 3W 5% TH	2 R5,R6.	Added per ECO#0336302.
PCBA POWER AMP SPIDER2	01-22-0R47	RES METAL OXIDE 0.47R 2W 5% TH	4 R3-4,R7-8	
PCBA POWER AMP SPIDER2	01-24-1693	RES 169K 1% 0805	2 R1,R9	
PCBA POWER AMP SPIDER2	01-60-0203	RES NETWORK ISOLATED 20K	2 R2,R10	
PCBA POWER AMP SPIDER2	03-18-0336	CAP ELEC 33uF 50V 20% RADIAL	2 C6,C16	
PCBA POWER AMP SPIDER2	03-18-1106	CAP ELEC 10uF 50V 20% BI-POLAR	2 C2,C12	
PCBA POWER AMP SPIDER2	03-22-0476	CAP ELEC 47uF 100V 20% RADIAL	2 C8,C10	

PCBA POWER AMP SPIDER2	03-24-0564	CAP MET-POLY 0.56uF 100VDC 5%	2 C7,C9.	Added per ECO#0336302.
PCBA POWER AMP SPIDER2	03-52-0470	CAP X7R 47pF 50V 20% 0805	2 C3,C13	
PCBA POWER AMP SPIDER2	03-52-0680	CAP X7R 68pF 50V 20% 0805	2 C1,C11	
PCBA POWER AMP SPIDER2	03-52-1103	CAP X7R 10nF 100V 10% 0805	4 C4-5,C14-15	
PCBA POWER AMP SPIDER2	12-30-7293	IC POWER-AMP 100W TDA7293	2 U1-2	
PCBA POWER AMP SPIDER2	21-30-0011-2	CAB RIBBON SIL 6-PIN	1 J2A on power amp to J2B on speaker out	
PCBA POWER AMP SPIDER2	35-00-0221	PCB POWER AMP REV.A SPIDER2	1 BREAKAWAY OF PWR SUPPLY	
ASSY E/M CHASSIS SPIDER2	50-02-0222	PCBA POWER SUPPLY SPIDER2	1	
PCBA POWER SUPPLY SPIDER2	01-12-0103	RES CARBON FILM 10K 1/4W 5% TH	1 R11	
PCBA POWER SUPPLY SPIDER2	01-12-0473	RES CARBON FILM 47K 1/4W 5% TH	1 R12	
PCBA POWER SUPPLY SPIDER2	01-20-0132	RES METAL OXIDE 1.3K 1W 5% TH	1 R13	
PCBA POWER SUPPLY SPIDER2	03-00-0104	CAP CER DISC 100nF 50V 20% TH	2 C27-28	
PCBA POWER SUPPLY SPIDER2	03-12-0688	CAP ELEC 6800uF 16V 20% RADIAL	1 C21	
PCBA POWER SUPPLY SPIDER2	03-18-0478	CAP ELEC 4700uF 50V 20% SNAPIN	2 C18-19	
PCBA POWER SUPPLY SPIDER2	03-36-0102	CAP ESTR 1nF 100V 5% TH	2 C29-30	
PCBA POWER SUPPLY SPIDER2	03-41-0224	CAP X-CAP 0.22uF 275VAC 20%	0 C17	
PCBA POWER SUPPLY SPIDER2	03-75-0102	CAP Y-CAP 1nF 250VAC 20% TH	2 C22-23	
PCBA POWER SUPPLY SPIDER2	06-04-4002	DIODE SMALL-SIGNAL 100V 30A	4 D2-3,D6,D9	
PCBA POWER SUPPLY SPIDER2	06-08-0820	DIODE ZENER 8.2V 5% 500mW	1 D4	
PCBA POWER SUPPLY SPIDER2	06-16-0008	DIODE BRIDGE-RECT 8A 600V	1 D1	
PCBA POWER SUPPLY SPIDER2	09-00-5401	TRANS PNP SMALL-SIGNAL 2N5401	1 Q1	
PCBA POWER SUPPLY SPIDER2	11-10-2020	CHOKES WIDE BAND 1-5 TURNS	2 L1-2	
PCBA POWER SUPPLY SPIDER2	21-20-1564	HDR PCB MT SIL 4-PIN X .156	1 H6	
PCBA POWER SUPPLY SPIDER2	21-20-1565	HDR PCB MT SIL 5-PIN X .156	1 H4	
PCBA POWER SUPPLY SPIDER2	21-20-3122	HDR PCB MT SIL 2-PIN x 7.92mm	1 H5	
PCBA POWER SUPPLY SPIDER2	21-20-3123	HDR PCB MT SIL 3-PIN X 7.92mm	2 H2-3	
PCBA POWER SUPPLY SPIDER2	21-30-0012-2	CBL SIL 12-PIN 2.54 x 76.2mm	1 J1A on power supply PCB to J1B on power amp break-away	
PCBA POWER SUPPLY SPIDER2	21-30-0021	CAB DIL 10 PIN .100 PITCH 3.0	1 H1	
PCBA POWER SUPPLY SPIDER2	35-00-0222	PCB POWER SUPPLY REV.A	1	
ASSY E/M CHASSIS SPIDER2	50-02-0223	PCBA HEADPHONE/RJ45 SPIDER2	1	
PCBA HEADPHONE/RJ45 SPIDER2	01-24-1000	RES 100R 1% 0805	2 R16-17	
PCBA HEADPHONE/RJ45 SPIDER2	03-10-0331	CAP ELEC 330uF 10V 20% RADIAL	2 C11,C13	
PCBA HEADPHONE/RJ45 SPIDER2	03-52-0102	CAP X7R 1nF 50V 20% 0805	6 C1,C3-5,C9-10	
PCBA HEADPHONE/RJ45 SPIDER2	03-52-0104	CAP X7R 0.1uF 50V 20% 0805	3 C6-8	
PCBA HEADPHONE/RJ45 SPIDER2	06-34-0031	DIODE GEN PUR DUAL 120V	2 D17-18	
PCBA HEADPHONE/RJ45 SPIDER2	21-00-6616	JACK 1/4" TRS 6-PIN PCB MT	1 J4	
PCBA HEADPHONE/RJ45 SPIDER2	21-16-0045	JACK RJ-45 8-PIN FEMALE	1 J3	
PCBA HEADPHONE/RJ45 SPIDER2	30-18-3030	CLIP GND PCB .30x.30x.07	2 GF2,GF15	
PCBA HEADPHONE/RJ45 SPIDER2	35-00-0223	PCB HEADPHONE/RJ45 REV.A	1 BREAKAWAY OF USER INTERFACE PCBA	
ASSY E/M CHASSIS SPIDER2	50-02-0224	PCBA GUITAR INPUT SPIDER2	1	
PCBA GUITAR INPUT SPIDER2	01-24-1001	RES 1.00K 1% 0805	2 R40-41	
PCBA GUITAR INPUT SPIDER2	01-24-1004	RES 1.00M 1% 0805	0 R45	
PCBA GUITAR INPUT SPIDER2	01-24-1502	RES 15.0K 1% 0805	1 R46	

PCBA GUITAR INPUT SPIDER2	01-24-2211	RES 2.21K 1% 0805	1 R49
PCBA GUITAR INPUT SPIDER2	01-24-3321	RES 3.32K 1% 0805	1 R48
PCBA GUITAR INPUT SPIDER2	03-24-0273	CAP MET-POLY 27nF 50V 5% TH	1 C53
PCBA GUITAR INPUT SPIDER2	03-52-0104	CAP X7R 0.1uF 50V 20% 0805	1 C46
PCBA GUITAR INPUT SPIDER2	03-52-0470	CAP X7R 47pF 50V 20% 0805	1 C45
PCBA GUITAR INPUT SPIDER2	03-52-0473	CAP X7R 47nF 50V 20% 0805	2 C43,C51
PCBA GUITAR INPUT SPIDER2	06-34-0031	DIODE GEN PUR DUAL 120V	1 D5
PCBA GUITAR INPUT SPIDER2	12-54-0072	IC OP-AMP DUAL TL072CD SM	1 U14
PCBA GUITAR INPUT SPIDER2	21-00-6616	JACK 1/4" TRS 6-PIN PCB MT	1 J5
PCBA GUITAR INPUT SPIDER2	30-18-3030	CLIP GND PCB .30x.30x.07	1 GF1
PCBA GUITAR INPUT SPIDER2	35-00-0224	PCB GUITAR INPUT REV.D	1 BREAKAWAY OF MAIN PCBA

**Line 6 Bill of Materials Report**  
**Parent Item: 99-010-1515 (SPIDER 2 210 US)**

item_desc_1	comp_item_n	comp_item_desc_1	qty	reference_1
SPIDER 2 210 US	21-37-1160	CABLE PWR UL/CSA SJT 8.2ft Bk	1	
SPIDER 2 210 US	40-00-0012	GUIDE POP-TOP SPIDER2	1	
SPIDER 2 210 US	40-00-0018	MANUAL USER SPIDER2 SERIES	1	
SPIDER 2 210 US	40-03-2000	CARD REGISTRATION UNIVERSAL	1	ADDED PER ECO#0326102.
SPIDER 2 210 US	40-10-0005	FOAM CORNER PE-LAM 1.5pcf	4	
SPIDER 2 210 US	40-10-0066	CARTON GIFT SPIDER2-210	1	
SPIDER 2 210 US	40-20-0010	BAG PLASTIC 43"x38"x.004 CLEAR	1	
SPIDER 2 210 US	40-20-0011	BAG PLASTIC 10 x 16 2 mil	1	
SPIDER 2 210 US	40-25-0020	LABEL INSPECTION QUALITY	1	
SPIDER 2 210 US	59-00-1505	ASSY UNIT COMPLETE SPIDER2 210	1	
ASSY UNIT COMPLETE SPIDER2 210	11-20-0000	SPEAKER 10" 8-OHM CELESTION	2	CABINET GRILL
ASSY UNIT COMPLETE SPIDER2 210	30-00-0033	SCREW 10-24 x7/8 TRUSS HD PHH	8	SPEAKERS
ASSY UNIT COMPLETE SPIDER2 210	30-00-0048	SCREW 10-32 x 1-IN OVAL CTSK	2	CABINET SIDES - CHASSIS
ASSY UNIT COMPLETE SPIDER2 210	30-00-1128	SCREW 10-32 x 1-3/4 OVAL	4	CABINET TOP - CHASSIS
ASSY UNIT COMPLETE SPIDER2 210	30-03-0112	WASHER FINISHING #10 FLANGED	6	CABINET TOP & SIDES - CHASSIS
ASSY UNIT COMPLETE SPIDER2 210	40-25-0100	LABEL BAR CODE SERIAL NUMBER	1	
ASSY UNIT COMPLETE SPIDER2 210	50-03-0002	ASSY CABINET SPIDER2	1	
ASSY CABINET SPIDER2	30-00-0812	SCREW w/WAX 8 x 3/4 PTB	14	CABINET ASSEMBLY - CORNER SCREWS
ASSY CABINET SPIDER2	30-00-1024	SCREW 10-24 x 1IN OVAL CTSK	2	CABINET ASSY - HANDLE SCREWS
ASSY CABINET SPIDER2	30-00-8112	SCR WOOD #8 x 1 1/2" OVAL SCTK	3	CABINET ASSY - BAFFLE BOARD AND BOTTOM
ASSY CABINET SPIDER2	30-03-0112	WASHER FINISHING #10 FLANGED	3	CABINET ASSY - BAFFLE BOARD SIDES AND BOTTOM
ASSY CABINET SPIDER2	30-06-1024	NUT-T 10-24 X 5/16 STEEL	10	CABINET ASSY - HANDLE & BAFFLE BOARD
ASSY CABINET SPIDER2	30-28-0002	CORNER LEFT HI-DENSITY	1	CABINET ASSY - FRONT LEFT CORNER
ASSY CABINET SPIDER2	30-28-0003	CORNER RIGHT HI-DENSITY	1	CABINET ASSY - FRONT RIGHT CORNER
ASSY CABINET SPIDER2	30-28-0004	CORNER BACK HI-DENSITY	6	CABINET ASSY - TOP BACK AND BOTTOM
ASSY CABINET SPIDER2	30-33-0031	CABINET PARTICLE BOARD 5/8IN	1	
ASSY CABINET SPIDER2	30-36-0005	COVER VINYL TEXTURED BLACK	1	CABINET ASSY
ASSY CABINET SPIDER2	30-39-0006	GRILL-CLOTH BLACK WEAVE	0	BAFFLE BOARD.
ASSY CABINET SPIDER2	30-57-0580	HANDLE/STRAP HEAVY DUTY BLACK	1	CABINET ASSY - TOP
ASSY CABINET SPIDER2	30-57-0581	END CAPS, BLACK, TEXTURED FINI	2	CABINET ASSY - TOP
ASSY UNIT COMPLETE SPIDER2 210	50-04-0002-1	ASSY E/M CHASSIS SPIDER2	1	
ASSY E/M CHASSIS SPIDER2	11-30-0008	XFMR 100/120VAC 50/60Hz 86mm	1	CHASSIS
ASSY E/M CHASSIS SPIDER2	21-34-0020-2	CBL SIL 4-PIN .156 x 15 IN	1	POWER AMP PCBA to SPEAKERS
ASSY E/M CHASSIS SPIDER2	21-34-0044-2	CBL 18AWG 3PIN SIL .256 273.0	1	POWER SUPPLY to POWER SWITCH to AC RECEPTACLE
ASSY E/M CHASSIS SPIDER2	21-34-1015	CBL FSTN .187-RCPT/.250-F FLAG	1	AC SWITCH Tto AC RECEPTACLE
ASSY E/M CHASSIS SPIDER2	24-19-4025	FUSE 4A/125v	1	
ASSY E/M CHASSIS SPIDER2	24-21-0002	ACTUATOR SWITCH SINGLE ROUND	5	M1-5 ON USER INTERFACE PCB
ASSY E/M CHASSIS SPIDER2	24-24-0606	SWITCH POWER ROCKER 6A/250VAC	1	CHASSIS
ASSY E/M CHASSIS SPIDER2	30-00-0018	SCREW SELF-TAP 6-32 x .75 PFZ	4	CHASSIS - HEATSINK



ASSY E/M CHASSIS SPIDER2	30-00-0043	SCREW 6-32 x 5/16 w/LK WASH	11 GND WIRE AND MAIN AND POWER SUPPLY PCBA'S to CHASSIS
ASSY E/M CHASSIS SPIDER2	30-00-1033	SCREW 10-32 x 3/8IN SCH STL	4 F/P to CHASSIS
ASSY E/M CHASSIS SPIDER2	30-00-6103	NUT HEX M9-0.75 ZINC	10 F/P to CHASSIS - POTS
ASSY E/M CHASSIS SPIDER2	30-06-0832	NUT .335 HEX 8-32 STL ZINC W/	4 TRANSFORMER - CHASSIS
ASSY E/M CHASSIS SPIDER2	30-24-0003	CABLE-TIE 4" CLEAR	4
ASSY E/M CHASSIS SPIDER2	30-28-0210-1	PANEL FRONT PLASTIC GREY	1 CHASSIS
ASSY E/M CHASSIS SPIDER2	30-45-0007	KNOB SPLINE .77DIA x .76 METAL	10 FRONT PANEL - POTS
ASSY E/M CHASSIS SPIDER2	30-51-0148	CHASSIS 550 x 129.54 x 86.61mm	1
ASSY E/M CHASSIS SPIDER2	30-63-0010	FOAM w/ADHSV 26.5x 1/4x 1/16IN	5 CHASSIS
ASSY E/M CHASSIS SPIDER2	30-75-9600	GROMMET RUBBER 7/16-D x	1 CHASSIS - SPEAKER WIRES
ASSY E/M CHASSIS SPIDER2	40-25-0015	LABEL GROUND SYMBOL	1 CHASSIS - INSIDE BY GND WIRE
ASSY E/M CHASSIS SPIDER2	40-25-0018	STICKER LINE6 LOGO OVAL	1 PLASTIC FRONT PANEL
ASSY E/M CHASSIS SPIDER2	50-00-0001	ASSY RECEPTACLE-A/C w/GND	1 CHASSIS - POWER SUPPLY PCBA
ASSY RECEPTACLE-A/C w/GND	21-14-0002	JACK IEC w/FUSE MALE 3-PIN	1
ASSY RECEPTACLE-A/C w/GND	21-34-1116	Cable, Earthing	1 GROUND
ASSY E/M CHASSIS SPIDER2	50-02-0219	PCBA USER INTERFACE SPIDER2	1
PCBA USER INTERFACE SPIDER2	01-12-0101	RES CARBON FILM 100R 1/4W 5%	1 R15
PCBA USER INTERFACE SPIDER2	01-12-0102	RES CARBON FILM 1K 1/4W 5% TH	2 R12,R19
PCBA USER INTERFACE SPIDER2	01-12-0201	RES CARBON FILM 200R 1/4W 5%	1 R14
PCBA USER INTERFACE SPIDER2	01-12-0202	RES CARBON FILM 2.0K 1/4W 5%	1 R11
PCBA USER INTERFACE SPIDER2	01-12-0511	RES CARBON FILM 510R 1/4W 5%	1 R13
PCBA USER INTERFACE SPIDER2	01-48-6103	POT MONO 10KB LINEAR TAPER	10 R1-10
PCBA USER INTERFACE SPIDER2	03-00-0104	CAP CER DISC 100nF 50V 20% TH	1 C12
PCBA USER INTERFACE SPIDER2	18-06-0002	LED RED/GRN 3-P COM CATH	16 D1-16
PCBA USER INTERFACE SPIDER2	21-30-0012-1	CBL SIL 10-PIN 2.54 x 76.2mm	1 H2 on user interface PCB to H3 on break-away PCB
PCBA USER INTERFACE SPIDER2	21-30-0022	CAB DIL 40 PIN .100 PITCH 3.0	1 H1
PCBA USER INTERFACE SPIDER2	24-31-1105	SWITCH TACT 6mm SQ 4-PIN TH	5 SW1-5
PCBA USER INTERFACE SPIDER2	30-15-0018	SPACER LED .560 LG	16 D1-16
PCBA USER INTERFACE SPIDER2	35-00-0219	PCB USER INTERFACE REV.A	1
ASSY E/M CHASSIS SPIDER2	50-02-0220-1	PCBA MAIN SPIDER2-COMBO SERIES	1
PCBA MAIN SPIDER2-COMBO SERIES	45-02-0011	IC PROGRAMMED FLASH v1.00	1
PCBA MAIN SPIDER2-COMBO SERIES	50-02-0220	PCBA MAIN (non-programmed)	1
PCBA MAIN (non-programmed)	01-24-1000	RES 100R 1% 0805	4 R12-13,R59,R71 R56 removed per ECO#321204
PCBA MAIN (non-programmed)	01-24-1001	RES 1.00K 1% 0805	1 R1 added per ECO 0321204
PCBA MAIN (non-programmed)	01-24-1002	RES 10.0K 1% 0805	14 R2-3,R14-15,R21-23,R28-29,R32-34,R68-69
PCBA MAIN (non-programmed)	01-24-1003	RES 100K 1% 0805	5 R36-37,R50-51,R66
PCBA MAIN (non-programmed)	01-24-10R0	RES 10.0R 1% 0805	1 R70
PCBA MAIN (non-programmed)	01-24-1300	RES 130R 1% 0805	4 R5,R7,R9,R11
PCBA MAIN (non-programmed)	01-24-1501	RES 1.50K 1% 0805	1 R38
PCBA MAIN (non-programmed)	01-24-1620	RES 162R 1% 0805	2 R56,R72 r56 added per ECO 321204
PCBA MAIN (non-programmed)	01-24-2001	RES 2.00K 1% 0805	1 R39
PCBA MAIN (non-programmed)	01-24-22R1	RES 22.1R 1% 0805	1 R55
PCBA MAIN (non-programmed)	01-24-4750	RES 475R 1% 0805	1 R64
PCBA MAIN (non-programmed)	01-24-4751	RES 4.75K 1% 0805	10 R16-17,R47,R57-58,R60-63,R65

PCBA MAIN (non-programmed)	01-24-4752	RES 47.5K 1% 0805	2 R18,R24
PCBA MAIN (non-programmed)	01-24-5110	RES 511R 1% 0805	1 R35
PCBA MAIN (non-programmed)	01-24-5R11	RES 5.11R 1% 0805	4 R19,R53-54,R67
PCBA MAIN (non-programmed)	01-24-6041	RES 6.04K 1% 0805	4 R25,R27,R30-31
PCBA MAIN (non-programmed)	01-24-75R0	RES 75R 1% 0805	4 R4,R6,R8,R10
PCBA MAIN (non-programmed)	01-24-9091	RES 9.09K 1% 0805	2 R20,R26
PCBA MAIN (non-programmed)	03-10-0107	CAP ELEC 100uF 10V 20% RADIAL	1 C41
PCBA MAIN (non-programmed)	03-10-6108	CAP ELEC 1000uF 6.3V 20%	1 C20
PCBA MAIN (non-programmed)	03-12-0476	CAP ELEC 47uF 16V 20% RADIAL	1 C12
PCBA MAIN (non-programmed)	03-12-1477	CAP ELEC 470uF 16V 20% RADIAL	1 C31
PCBA MAIN (non-programmed)	03-18-0105	CAP ELEC 1uF 50V 20% RADIAL	4 C8,C15,C42,C44
PCBA MAIN (non-programmed)	03-18-0106	CAP ELEC 10uF 50V 20% RADIAL	11 C3,C5,C7,C14,C21-22,C38-40,C47,C77
PCBA MAIN (non-programmed)	03-46-0332	CAP X7R 3.3nF 50V 20% 1206	1 C58
PCBA MAIN (non-programmed)	03-50-0220	CAP NPO 22pF 50V 20% 0805	1 C63
PCBA MAIN (non-programmed)	03-50-0470	CAP NPO 47pF 50V 10% 0805	1 C64
PCBA MAIN (non-programmed)	03-52-0102	CAP X7R 1nF 50V 20% 0805	2 C32,C34
PCBA MAIN (non-programmed)	03-52-0221	CAP X7R 220pF 50V 20% 0805	4 C25,C28,C48-49
PCBA MAIN (non-programmed)	03-52-0391	CAP X7R 390pF 50V 20% 0805	4 C26,C29-30,C36
PCBA MAIN (non-programmed)	03-52-0473	CAP X7R 47nF 50V 20% 0805	33 C1-2,C4,C9,C16-19,C23-24,C27,C33,C35,C37,C50,C54-57,C60-62,C56,C67-76
PCBA MAIN (non-programmed)	06-23-0054	DIODE SCHOTTKY DUAL 30V 200mA	1 D4
PCBA MAIN (non-programmed)	06-28-8468	DIODE ZENER 6.8V 5% 350mW	1 D7
PCBA MAIN (non-programmed)	06-34-0031	DIODE GEN PUR DUAL 120V	11 D1-3,D6,D8-14
PCBA MAIN (non-programmed)	09-06-7002	TRANS MOSFET N-CHAN 60V 7R5	5 Q1-5
PCBA MAIN (non-programmed)	11-00-2000	CRYSTAL 2.000MHz HC49 TH	1 X1
PCBA MAIN (non-programmed)	12-00-0317	IC VREG ADJ 1.2-25V 1.5 AMP	1 U6
PCBA MAIN (non-programmed)	12-02-1088	IC REG ADJ TO-220 TH LM1086	1 U1
PCBA MAIN (non-programmed)	12-02-7805	IC REG +5v 1.5 Amp TH	1 U8
PCBA MAIN (non-programmed)	12-30-4880	IC POWER-AMP 250mW TI	2 U10-11
PCBA MAIN (non-programmed)	12-54-0084	IC OP AMP QUAD TL084CD SM	1 U12
PCBA MAIN (non-programmed)	12-64-0542	IC CONVERTER A/D 8-BIT TLC542	1 U16
PCBA MAIN (non-programmed)	12-64-4528	IC CONVERTER 24B 48/96KHz	1 U13
PCBA MAIN (non-programmed)	15-62-1004	IC 74HCU04 UNBUFFERED HEX	1 U9
PCBA MAIN (non-programmed)	15-64-0541	IC 74HCT 541 OCTAL BUF/DRIVER	1 U4
PCBA MAIN (non-programmed)	15-72-0001	IC SRAM-256K x 8 TSOP32 SM	1 U5
PCBA MAIN (non-programmed)	15-78-0003	IC FLASH 512K Bit (64Kx8) 70nS	1 U3
PCBA MAIN (non-programmed)	15-86-6362	IC DSP 24-BIT TQFP144 SM	1 U7
PCBA MAIN (non-programmed)	15-92-5809	IC RESET 3.3V 5% ACTIVE-LOW	1 U2
PCBA MAIN (non-programmed)	21-20-1008	HDR PCB MT SIL 8-PIN 1x8x .100	1 H4
PCBA MAIN (non-programmed)	21-20-2010	HDR PCB MT DIL 10-PIN 2x5x100	1 H1
PCBA MAIN (non-programmed)	21-21-0040	HDR PCB MT DIL 40-PIN 2x20x2mm	1 H5
PCBA MAIN (non-programmed)	21-30-0011-1	CAB RIBBON SIL 6-PIN	1 H3 on main to H2 on guitar in breakaway
PCBA MAIN (non-programmed)	30-00-0607	SCREW 6-32 x 7/16IN w/LK WASH	2 U1, U6
PCBA MAIN (non-programmed)	30-12-0632	STANDOFF HEX .250 6-32 F-F 1IN	2 U1,U6
PCBA MAIN (non-programmed)	30-15-0007	INSULATOR XTAL 4.9mm C-C	1 INSTALL UNDER X1

PCBA MAIN (non-programmed)	35-00-0220	PCB MAIN REV.D SPIDER2 SERIES	1	
ASSY E/M CHASSIS SPIDER2	50-02-0221-1	PCBA POWER AMP w/HEATSINK	1	
PCBA POWER AMP w/HEATSINK	30-00-0010	SCREW 8-32 x 9/16 SKT-CAP	2	HEATSINK CLAMPS
PCBA POWER AMP w/HEATSINK	30-00-0028	SCREW 8-32 x 5/16" SHCS	1	SUPPORT BRACKET BR1
PCBA POWER AMP w/HEATSINK	30-03-0002	WASHER #8 .293 x .174x .040	3	(2) CLAMPS (1) SUPPORT BRKT
PCBA POWER AMP w/HEATSINK	30-06-0007	NUT .344 HEX 8-32 STEEL ZINC	3	(2) CLAMPS (1) SUPPORT BRKT
PCBA POWER AMP w/HEATSINK	30-51-0059-3	HEATSINK 4.0 IN LG AL ALY BLK	1	POWER AMP PCBA
PCBA POWER AMP w/HEATSINK	30-51-0073	CLAMP HEATSINK TO-220	2	HEATSINK - POWER AMPS
PCBA POWER AMP w/HEATSINK	30-51-0105	BRKT SUPPORT .565 x .530 x	1	BR1
PCBA POWER AMP w/HEATSINK	30-63-0006	PAD THERMAL 6mil 25mm x 30mm	2	HEATSINK - POWER AMP
PCBA POWER AMP w/HEATSINK	50-02-0221	PCBA POWER AMP SPIDER2	1	
PCBA POWER AMP SPIDER2	01-12-0000	RES CARBON FILM 0R 1/4W 5% TH	1	JP1.
PCBA POWER AMP SPIDER2	01-00-0103	RES 10K 5% 0805	1	R14
PCBA POWER AMP SPIDER2	01-23-02R2	RES METAL OXIDE 2.2R 3W 5% TH	2	R5,R6. Added per ECO#0336302.
PCBA POWER AMP SPIDER2	01-22-0R47	RES METAL OXIDE 0.47R 2W 5% TH	4	R3-4,R7-8
PCBA POWER AMP SPIDER2	01-24-1693	RES 169K 1% 0805	2	R1,R9
PCBA POWER AMP SPIDER2	01-60-0203	RES NETWORK ISOLATED 20K	2	R2,R10
PCBA POWER AMP SPIDER2	03-18-0336	CAP ELEC 33uF 50V 20% RADIAL	2	C6,C16
PCBA POWER AMP SPIDER2	03-18-1106	CAP ELEC 10uF 50V 20% BI-POLAR	2	C2,C12
PCBA POWER AMP SPIDER2	03-22-0476	CAP ELEC 47uF 100V 20% RADIAL	2	C8,C10
PCBA POWER AMP SPIDER2	03-24-0564	CAP MET-POLY 0.56uF 100VDC 5%	2	C7,C9. Added per ECO#0336302
PCBA POWER AMP SPIDER2	03-52-0470	CAP X7R 47pF 50V 20% 0805	2	C3,C13
PCBA POWER AMP SPIDER2	03-52-0680	CAP X7R 68pF 50V 20% 0805	2	C1,C11
PCBA POWER AMP SPIDER2	03-52-1103	CAP X7R 10nF 100V 10% 0805	4	C4-5,C14-15
PCBA POWER AMP SPIDER2	12-30-7293	IC POWER-AMP 100W TDA7293	2	U1-2
PCBA POWER AMP SPIDER2	21-30-0011-2	CAB RIBBON SIL 6-PIN	1	J2A on power amp to J2B on speaker out
PCBA POWER AMP SPIDER2	35-00-0221	PCB POWER AMP REV.A SPIDER2	1	BREAKAWAY OF PWR SUPPLY
ASSY E/M CHASSIS SPIDER2	50-02-0222	PCBA POWER SUPPLY SPIDER2	1	
PCBA POWER SUPPLY SPIDER2	01-12-0103	RES CARBON FILM 10K 1/4W 5% TH	1	R11
PCBA POWER SUPPLY SPIDER2	01-12-0473	RES CARBON FILM 47K 1/4W 5% TH	1	R12
PCBA POWER SUPPLY SPIDER2	01-20-0132	RES METAL OXIDE 1.3K 1W 5% TH	1	R13
PCBA POWER SUPPLY SPIDER2	03-00-0104	CAP CER DISC 100nF 50V 20% TH	2	C27-28
PCBA POWER SUPPLY SPIDER2	03-12-0688	CAP ELEC 6800uF 16V 20% RADIAL	1	C21
PCBA POWER SUPPLY SPIDER2	03-18-0478	CAP ELEC 4700uF 50V 20% SNAPIN	2	C18-19
PCBA POWER SUPPLY SPIDER2	03-36-0102	CAP ESTR 1nF 100V 5% TH	2	C29-30
PCBA POWER SUPPLY SPIDER2	03-41-0224	CAP X-CAP 0.22uF 275VAC 20%	0	C17
PCBA POWER SUPPLY SPIDER2	03-75-0102	CAP Y-CAP 1nF 250VAC 20% TH	2	C22-23
PCBA POWER SUPPLY SPIDER2	06-04-4002	DIODE SMALL-SIGNAL 100V 30A	4	D2-3,D6,D9
PCBA POWER SUPPLY SPIDER2	06-08-0820	DIODE ZENER 8.2V 5% 500mW	1	D4
PCBA POWER SUPPLY SPIDER2	06-16-0008	DIODE BRIDGE-RECT 8A 600V	1	D1
PCBA POWER SUPPLY SPIDER2	09-00-5401	TRANS PNP SMALL-SIGNAL 2N5401	1	Q1
PCBA POWER SUPPLY SPIDER2	11-10-2020	CHOKE WIDE BAND 1-5 TURNS	2	L1-2
PCBA POWER SUPPLY SPIDER2	21-20-1564	HDR PCB MT SIL 4-PIN X .156	1	H6
PCBA POWER SUPPLY SPIDER2	21-20-1565	HDR PCB MT SIL 5-PIN X .156	1	H4

PCBA POWER SUPPLY SPIDER2	21-20-3122	HDR PCB MT SIL 2-PIN x 7.92mm	1 H5
PCBA POWER SUPPLY SPIDER2	21-20-3123	HDR PCB MT SIL 3-PIN X 7.92mm	2 H2-3
PCBA POWER SUPPLY SPIDER2	21-30-0012-2	CBL SIL 12-PIN 2.54 x 76.2mm	1 J1A on power supply PCB to J1B on power amp break-away
PCBA POWER SUPPLY SPIDER2	21-30-0021	CAB DIL 10 PIN .100 PITCH 3.0	1 H1
PCBA POWER SUPPLY SPIDER2	35-00-0222	PCB POWER SUPPLY REV.A	1
ASSY E/M CHASSIS SPIDER2	50-02-0223	PCBA HEADPHONE/RJ45 SPIDER2	1
PCBA HEADPHONE/RJ45 SPIDER2	01-24-1000	RES 100R 1% 0805	2 R16-17
PCBA HEADPHONE/RJ45 SPIDER2	03-10-0331	CAP ELEC 330uF 10V 20% RADIAL	2 C11,C13
PCBA HEADPHONE/RJ45 SPIDER2	03-52-0102	CAP X7R 1nF 50V 20% 0805	6 C1,C3-5,C9-10
PCBA HEADPHONE/RJ45 SPIDER2	03-52-0104	CAP X7R 0.1uF 50V 20% 0805	3 C6-8
PCBA HEADPHONE/RJ45 SPIDER2	06-34-0031	DIODE GEN PUR DUAL 120V	2 D17-18
PCBA HEADPHONE/RJ45 SPIDER2	21-00-6616	JACK 1/4" TRS 6-PIN PCB MT	1 J4
PCBA HEADPHONE/RJ45 SPIDER2	21-16-0045	JACK RJ-45 8-PIN FEMALE	1 J3
PCBA HEADPHONE/RJ45 SPIDER2	30-18-3030	CLIP GND PCB .30x.30x.07	2 GF2,GF15
PCBA HEADPHONE/RJ45 SPIDER2	35-00-0223	PCB HEADPHONE/RJ45 REV.A	1 BREAKAWAY OF USER INTERFACE PCBA
ASSY E/M CHASSIS SPIDER2	50-02-0224	PCBA GUITAR INPUT SPIDER2	1
PCBA GUITAR INPUT SPIDER2	01-24-1001	RES 1.00K 1% 0805	2 R40-41
PCBA GUITAR INPUT SPIDER2	01-24-1004	RES 1.00M 1% 0805	0 R45
PCBA GUITAR INPUT SPIDER2	01-24-1502	RES 15.0K 1% 0805	1 R46
PCBA GUITAR INPUT SPIDER2	01-24-2211	RES 2.21K 1% 0805	1 R49
PCBA GUITAR INPUT SPIDER2	01-24-3321	RES 3.32K 1% 0805	1 R48
PCBA GUITAR INPUT SPIDER2	03-24-0273	CAP MET-POLY 27nF 50V 5% TH	1 C53
PCBA GUITAR INPUT SPIDER2	03-52-0104	CAP X7R 0.1uF 50V 20% 0805	1 C46
PCBA GUITAR INPUT SPIDER2	03-52-0470	CAP X7R 47pF 50V 20% 0805	1 C45
PCBA GUITAR INPUT SPIDER2	03-52-0473	CAP X7R 47nF 50V 20% 0805	2 C43,C51
PCBA GUITAR INPUT SPIDER2	06-34-0031	DIODE GEN PUR DUAL 120V	1 D5
PCBA GUITAR INPUT SPIDER2	12-54-0072	IC OP-AMP DUAL TL072CD SM	1 U14
PCBA GUITAR INPUT SPIDER2	21-00-6616	JACK 1/4" TRS 6-PIN PCB MT	1 J5
PCBA GUITAR INPUT SPIDER2	30-18-3030	CLIP GND PCB .30x.30x.07	1 GF1
PCBA GUITAR INPUT SPIDER2	35-00-0224	PCB GUITAR INPUT REV.D	1 BREAKAWAY OF MAIN PCBA

**Line 6 Bill of Materials Report**

**Parent Item: 99-010-1415 (SPIDER 2 112 US)**

item_desc_1	comp_item_no	comp_item_desc_1	qty_1	reference_1
SPIDER 2 112 US	21-37-1160	CABLE PWR UL/CSA SJT 8.2ft Blk	1	
SPIDER 2 112 US	40-00-0018	MANUAL USER SPIDER2 SERIES	1	
SPIDER 2 112 US	40-00-0046	GUIDE POP-TOP SPIDER2-112	1	PACKOUT.
SPIDER 2 112 US	40-03-2000	CARD REGISTRATION UNIVERSAL	1	ADDED PER ECO#0326102.
SPIDER 2 112 US	40-10-0005	FOAM CORNER PE-LAM 1.5pcf	4	
SPIDER 2 112 US	40-10-0065	CARTON GIFT SPIDER2-112	1	
SPIDER 2 112 US	40-20-0010	BAG PLASTIC 43"x38"x.004 CLEAR	1	
SPIDER 2 112 US	40-20-0011	BAG PLASTIC 10 x 16 2 mil	1	
SPIDER 2 112 US	40-25-0020	LABEL INSPECTION QUALITY	1	
SPIDER 2 112 US	59-00-1405	ASSY UNIT COMPLETE SPIDER2 112	1	
ASSY UNIT COMPLETE SPIDER2 112	11-20-1208	SPEAKER 12" 8-OHM CELESTION	1	CABINET GRILL
ASSY UNIT COMPLETE SPIDER2 112	30-00-0033	SCREW 10-24 x7/8 TRUSS HD PHH	4	SPEAKERS
ASSY UNIT COMPLETE SPIDER2 112	30-00-0048	SCREW 10-32 x 1-IN OVAL CTSK	2	CABINET SIDES - CHASSIS
ASSY UNIT COMPLETE SPIDER2 112	30-00-1128	SCREW 10-32 x 1-3/4 OVAL	4	CABINET TOP - CHASSIS
ASSY UNIT COMPLETE SPIDER2 112	30-03-0112	WASHER FINISHING #10 FLANGED	6	CABINET TOP & SIDES - CHASSIS
ASSY UNIT COMPLETE SPIDER2 112	40-25-0100	LABEL BAR CODE SERIAL NUMBER	1	
ASSY UNIT COMPLETE SPIDER2 112	50-03-0001	ASSY CABINET SPIDER2	1	
ASSY CABINET SPIDER2	30-00-0812	SCREW w/WAX 8 x 3/4 PTB	14	
ASSY CABINET SPIDER2	30-00-1024	SCREW 10-24 x 1IN OVAL CTSK	2	
ASSY CABINET SPIDER2	30-00-8112	SCR WOOD #8 x 1 1/2" OVAL SCTK	3	
ASSY CABINET SPIDER2	30-03-0112	WASHER FINISHING #10 FLANGED	3	
ASSY CABINET SPIDER2	30-06-1024	NUT-T 10-24 X 5/16 STEEL	6	
ASSY CABINET SPIDER2	30-28-0002	CORNER LEFT HI-DENSITY	1	
ASSY CABINET SPIDER2	30-28-0003	CORNER RIGHT HI-DENSITY	1	
ASSY CABINET SPIDER2	30-28-0004	CORNER BACK HI-DENSITY	6	
ASSY CABINET SPIDER2	30-33-0032	CABINET PARTICLE BOARD 5/8IN	1	
ASSY CABINET SPIDER2	30-36-0005	COVER VINYL TEXTURED BLACK	0.73	
ASSY CABINET SPIDER2	30-39-0006	GRILL-CLOTH BLACK WEAVE	0.18	
ASSY CABINET SPIDER2	30-57-0580	HANDLE/STRAP HEAVY DUTY BLACK	1	
ASSY CABINET SPIDER2	30-57-0581	END CAPS, BLACK, TEXTURED FINI	2	
ASSY UNIT COMPLETE SPIDER2 112	50-04-0001-1	ASSY E/M CHASSIS SPIDER2 112	1	
ASSY E/M CHASSIS SPIDER2 112	11-30-0006	XFMR 100/120VAC 50/60Hz 76mm	1	CHASSIS
ASSY E/M CHASSIS SPIDER2 112	21-34-0037	CAB ASSY 2 PIN 13.5 IN LG	1	POWER SUPPLY PCAB to SPEAKERS
ASSY E/M CHASSIS SPIDER2 112	21-34-0044-1	CBL 18AWG 3PIN SIL .256 209.6	1	POWER SUPPLY to POWER SWITCH to AC RECEPTACLE
ASSY E/M CHASSIS SPIDER2 112	21-34-1015	CBL FSTN .187-RCPT/.250-F FLAG	1	C SWITCH to ac RECEPTACLE
ASSY E/M CHASSIS SPIDER2 112	24-19-4025	FUSE 4A/125v	1	AC RECEPTACLE FUSE HOLDER
ASSY E/M CHASSIS SPIDER2 112	24-21-0002	ACTUATOR SWITCH SINGLE ROUND	5	M1-5 ON USER INTERFACE PCB
ASSY E/M CHASSIS SPIDER2 112	24-24-0606	SWITCH POWER ROCKER 6A/250VAC	1	CHASSIS

ASSY E/M CHASSIS SPIDER2 112	30-00-0018	SCREW SELF-TAP 6-32 x .75 PFZ	4 CHASSIS - HEATSINK
ASSY E/M CHASSIS SPIDER2 112	30-00-0043	SCREW 6-32 x 5/16 w/LK WASH	11 GND WIRE AND MAIN AND POWER SUPPLY PCBA'S to CHASSIS
ASSY E/M CHASSIS SPIDER2 112	30-00-1033	SCREW 10-32 x 3/8IN SCH STL	4 F/P to CHASSIS
ASSY E/M CHASSIS SPIDER2 112	30-00-6103	NUT HEX M9-0.75 ZINC	10 F/P to CHASSIS - POTS
ASSY E/M CHASSIS SPIDER2 112	30-06-0832	NUT .335 HEX 8-32 STL ZINC W/	4 TRANSFORMER - CHASSIS
ASSY E/M CHASSIS SPIDER2 112	30-24-0003	CABLE-TIE 4" CLEAR	4
ASSY E/M CHASSIS SPIDER2 112	30-28-0112-1	PANEL FRONT PLASTIC GREY	1 CHASSIS
ASSY E/M CHASSIS SPIDER2 112	30-45-0007	KNOB SPLINE .77DIA x .76 METAL	10 FRONT PANEL - POTS
ASSY E/M CHASSIS SPIDER2 112	30-51-0147	CHASSIS 480 x 130 x 86.61mm	1
ASSY E/M CHASSIS SPIDER2 112	30-63-0010	FOAM w/ADHSV 26.5x 1/4x 1/16IN	5 CHASSIS
ASSY E/M CHASSIS SPIDER2 112	30-75-9600	GROMMET RUBBER 7/16-D x	1 CHASSIS - SPEAKER WIRES
ASSY E/M CHASSIS SPIDER2 112	40-25-0015	LABEL GROUND SYMBOL	1 CHASSIS - INSIDE BY GND WIRE
ASSY E/M CHASSIS SPIDER2 112	40-25-0018	STICKER LINE6 LOGO OVAL	1 PLASTIC FRONT PANEL
ASSY E/M CHASSIS SPIDER2 112	50-00-0001	ASSY RECEPTACLE-A/C w/GND	1 CHASSIS - POWER SUPPLY PCBA
ASSY RECEPTACLE-A/C w/GND	21-14-0002	JACK IEC w/FUSE MALE 3-PIN	1
ASSY RECEPTACLE-A/C w/GND	21-34-1116	Cable, Earthing	1 GROUND
ASSY E/M CHASSIS SPIDER2 112	50-02-0217-1	PCBA POWER AMP w/HEATSINK	1
PCBA POWER AMP w/HEATSINK	30-00-0010	SCREW 8-32 x 9/16 SKT-CAP	1 HEATSINK CLAMPS
PCBA POWER AMP w/HEATSINK	30-00-0028	SCREW 8-32 x 5/16" SHCS	1 SUPPORT BRACKET BR1
PCBA POWER AMP w/HEATSINK	30-03-0002	WASHER #8 .293 x .174x .040	2 (1)CLAMPS (1) SUPPORT BRK
PCBA POWER AMP w/HEATSINK	30-06-0007	NUT .344 HEX 8-32 STEEL ZINC	2 (1)CLAMPS (1)SUPPORT BRK
PCBA POWER AMP w/HEATSINK	30-51-0059-5	HEATSINK 2.0 IN LG AL ALY BLK	1 POWER AMP PCBA
PCBA POWER AMP w/HEATSINK	30-51-0073	CLAMP HEATSINK TO-220	1 HEATSINK - POWER AMPS
PCBA POWER AMP w/HEATSINK	30-51-0105	BRKT SUPPORT .565 x .530 x	1 BR1
PCBA POWER AMP w/HEATSINK	30-63-0006	PAD THERMAL 6mil 25mm x 30mm	1 HEATSINK - POWER AMP
PCBA POWER AMP w/HEATSINK	50-02-0217	PCBA POWER AMP SPIDER2	1
PCBA POWER AMP SPIDER2	01-00-0103	RES 10K 5% 0805	1 R14
PCBA POWER AMP SPIDER2	01-23-02R2	RES METAL OXIDE 2.2R 3W 5% TH	1 R6. Added per ECO#0336302.
PCBA POWER AMP SPIDER2	01-22-0R47	RES METAL OXIDE 0.47R 2W 5% TH	2 R7-8
PCBA POWER AMP SPIDER2	01-24-1693	RES 169K 1% 0805	1 R9
PCBA POWER AMP SPIDER2	01-60-0203	RES NETWORK ISOLATED 20K	1 R10
PCBA POWER AMP SPIDER2	03-18-0336	CAP ELEC 33uF 50V 20% RADIAL	1 C16
PCBA POWER AMP SPIDER2	03-18-1106	CAP ELEC 10uF 50V 20% BI-POLAR	1 C12
PCBA POWER AMP SPIDER2	03-22-0476	CAP ELEC 47uF 100V 20% RADIAL	2 C8,C10
PCBA POWER AMP SPIDER2	03-24-0564	CAP MET-POLY 0.56uF 100VDC 5%	1 C9. Added per ECO#0336302.
PCBA POWER AMP SPIDER2	03-52-0470	CAP X7R 47pF 50V 20% 0805	1 C13
PCBA POWER AMP SPIDER2	03-52-0680	CAP X7R 68pF 50V 20% 0805	1 C11
PCBA POWER AMP SPIDER2	03-52-1103	CAP X7R 10nF 100V 10% 0805	2 C14-15
PCBA POWER AMP SPIDER2	12-30-7293	IC POWER-AMP 100W TDA7293	1 U2
PCBA POWER AMP SPIDER2	35-00-0217	PCB POWER AMP REV.A SPIDER2	1 BREAKAWAY OF PWR SUPPLY
ASSY E/M CHASSIS SPIDER2 112	50-02-0219	PCBA USER INTERFACE SPIDER2	1
PCBA USER INTERFACE SPIDER2	01-12-0101	RES CARBON FILM 100R 1/4W 5%	1 R15
PCBA USER INTERFACE SPIDER2	01-12-0102	RES CARBON FILM 1K 1/4W 5% TH	2 R12,R19

PCBA USER INTERFACE SPIDER2	01-12-0201	RES CARBON FILM 200R 1/4W 5%	1 R14
PCBA USER INTERFACE SPIDER2	01-12-0202	RES CARBON FILM 2.0K 1/4W 5%	1 R11
PCBA USER INTERFACE SPIDER2	01-12-0511	RES CARBON FILM 510R 1/4W 5%	1 R13
PCBA USER INTERFACE SPIDER2	01-48-6103	POT MONO 10KB LINEAR TAPER	10 R1-10
PCBA USER INTERFACE SPIDER2	03-00-0104	CAP CER DISC 100nF 50V 20% TH	1 C12
PCBA USER INTERFACE SPIDER2	18-06-0002	LED RED/GRN 3-P COM CATH	16 D1-16
PCBA USER INTERFACE SPIDER2	21-30-0012-1	CBL SIL 10-PIN 2.54 x 76.2mm	1 H2 on user interface PCB to H3 on break-away PCB
PCBA USER INTERFACE SPIDER2	21-30-0022	CAB DIL 40 PIN .100 PITCH 3.0	1 H1
PCBA USER INTERFACE SPIDER2	24-31-1105	SWITCH TACT 6mm SQ 4-PIN TH	5 SW1-5
PCBA USER INTERFACE SPIDER2	30-15-0018	SPACER LED .560 LG	16 D1-16
PCBA USER INTERFACE SPIDER2	35-00-0219	PCB USER INTERFACE REV.A	1
ASSY E/M CHASSIS SPIDER2 112	50-02-0220-1	PCBA MAIN SPIDER2-COMBO SERIES	1
PCBA MAIN SPIDER2-COMBO SERIES	45-02-0011	IC PROGRAMMED FLASH v1.00	1
PCBA MAIN SPIDER2-COMBO SERIES	50-02-0220	PCBA MAIN (non-programmed)	1
PCBA MAIN (non-programmed)	01-24-1000	RES 100R 1% 0805	4 R12-13,R59,R71 R56 removed per ECO#321204.
PCBA MAIN (non-programmed)	01-24-1001	RES 1.00K 1% 0805	1 R1 added per ECO 0321204
PCBA MAIN (non-programmed)	01-24-1002	RES 10.0K 1% 0805	14 R2-3,R14-15,R21-23,R28-29,R32-34,R68-69
PCBA MAIN (non-programmed)	01-24-1003	RES 100K 1% 0805	5 R36-37,R50-51,R66
PCBA MAIN (non-programmed)	01-24-10R0	RES 10.0R 1% 0805	1 R70
PCBA MAIN (non-programmed)	01-24-1300	RES 130R 1% 0805	4 R5,R7,R9,R11
PCBA MAIN (non-programmed)	01-24-1501	RES 1.50K 1% 0805	1 R38
PCBA MAIN (non-programmed)	01-24-1620	RES 162R 1% 0805	2 R56,R72 r56 added per ECO 321204
PCBA MAIN (non-programmed)	01-24-2001	RES 2.00K 1% 0805	1 R39
PCBA MAIN (non-programmed)	01-24-22R1	RES 22.1R 1% 0805	1 R55
PCBA MAIN (non-programmed)	01-24-4750	RES 475R 1% 0805	1 R64
PCBA MAIN (non-programmed)	01-24-4751	RES 4.75K 1% 0805	10 R16-17,R47,R57-58,R60-63,R65
PCBA MAIN (non-programmed)	01-24-4752	RES 47.5K 1% 0805	2 R18,R24
PCBA MAIN (non-programmed)	01-24-5110	RES 511R 1% 0805	1 R35
PCBA MAIN (non-programmed)	01-24-5R11	RES 5.11R 1% 0805	4 R19,R53-54,R67
PCBA MAIN (non-programmed)	01-24-6041	RES 6.04K 1% 0805	4 R25,R27,R30-31
PCBA MAIN (non-programmed)	01-24-75R0	RES 75R 1% 0805	4 R4,R6,R8,R10
PCBA MAIN (non-programmed)	01-24-9091	RES 9.09K 1% 0805	2 R20,R26
PCBA MAIN (non-programmed)	03-10-0107	CAP ELEC 100uF 10V 20% RADIAL	1 C41
PCBA MAIN (non-programmed)	03-10-6108	CAP ELEC 1000uF 6.3V 20%	1 C20
PCBA MAIN (non-programmed)	03-12-0476	CAP ELEC 47uF 16V 20% RADIAL	1 C12
PCBA MAIN (non-programmed)	03-12-1477	CAP ELEC 470uF 16V 20% RADIAL	1 C31
PCBA MAIN (non-programmed)	03-18-0105	CAP ELEC 1uF 50V 20% RADIAL	4 C8,C15,C42,C44
PCBA MAIN (non-programmed)	03-18-0106	CAP ELEC 10uF 50V 20% RADIAL	11 C3,C5,C7,C14,C21-22,C38-40,C47,C77
PCBA MAIN (non-programmed)	03-46-0332	CAP X7R 3.3nF 50V 20% 1206	1 C58
PCBA MAIN (non-programmed)	03-50-0220	CAP NPO 22pF 50V 20% 0805	1 C63
PCBA MAIN (non-programmed)	03-50-0470	CAP NPO 47pF 50V 10% 0805	1 C64
PCBA MAIN (non-programmed)	03-52-0102	CAP X7R 1nF 50V 20% 0805	2 C32,C34
PCBA MAIN (non-programmed)	03-52-0221	CAP X7R 220pF 50V 20% 0805	4 C25,C28,C48-49

PCBA MAIN (non-programmed)	03-52-0391	CAP X7R 390pF 50V 20% 0805	4 C26,C29-30,C36
PCBA MAIN (non-programmed)	03-52-0473	CAP X7R 47nF 50V 20% 0805	33 C1-2,C4,C9,C16-19,C23-24,C27,C33,C35,C37,C50,C54-57,C60-62,C65,C67-76
PCBA MAIN (non-programmed)	06-23-0054	DIODE SCHOTTKY DUAL 30V 200mA	1 D4
PCBA MAIN (non-programmed)	06-28-8468	DIODE ZENER 6.8V 5% 350mW	1 D7
PCBA MAIN (non-programmed)	06-34-0031	DIODE GEN PUR DUAL 120V	11 D1-3,D6,D8-14
PCBA MAIN (non-programmed)	09-06-7002	TRANS MOSFET N-CHAN 60V 7R5	5 Q1-5
PCBA MAIN (non-programmed)	11-00-2000	CRYSTAL 2.000MHz HC49 TH	1 X1
PCBA MAIN (non-programmed)	12-00-0317	IC VREG ADJ 1.2-25V 1.5 AMP	1 U6
PCBA MAIN (non-programmed)	12-02-1088	IC REG ADJ TO-220 TH LM1086	1 U1
PCBA MAIN (non-programmed)	12-02-7805	IC REG +5v 1.5 Amp TH	1 U8
PCBA MAIN (non-programmed)	12-30-4880	IC POWER-AMP 250mW TI	2 U10-11
PCBA MAIN (non-programmed)	12-54-0084	IC OP AMP QUAD TL084CD SM	1 U12
PCBA MAIN (non-programmed)	12-64-0542	IC CONVERTER A/D 8-BIT TLC542	1 U16
PCBA MAIN (non-programmed)	12-64-4528	IC CONVERTER 24B 48/96KHz	1 U13
PCBA MAIN (non-programmed)	15-62-1004	IC 74HCU04 UNBUFFERED HEX	1 U9
PCBA MAIN (non-programmed)	15-64-0541	IC 74HCT 541 OCTAL BUF/DRIVER	1 U4
PCBA MAIN (non-programmed)	15-72-0001	IC SRAM-256K x 8 TSOP32 SM	1 U5
PCBA MAIN (non-programmed)	15-78-0003	IC FLASH 512K Bit (64Kx8) 70nS	1 U3
PCBA MAIN (non-programmed)	15-86-6362	IC DSP 24-BIT TQFP144 SM	1 U7
PCBA MAIN (non-programmed)	15-92-5809	IC RESET 3.3V 5% ACTIVE-LOW	1 U2
PCBA MAIN (non-programmed)	21-20-1008	HDR PCB MT SIL 8-PIN 1x8x .100	1 H4
PCBA MAIN (non-programmed)	21-20-2010	HDR PCB MT DIL 10-PIN 2x5x100	1 H1
PCBA MAIN (non-programmed)	21-21-0040	HDR PCB MT DIL 40-PIN 2x20x2mm	1 H5
PCBA MAIN (non-programmed)	21-30-0011-1	CAB RIBBON SIL 6-PIN	1 H3 on main to H2 on guitar in breakaway
PCBA MAIN (non-programmed)	30-00-0607	SCREW 6-32 x 7/16IN w/LK WASH	2 U1, U6
PCBA MAIN (non-programmed)	30-12-0632	STANDOFF HEX .250 6-32 F-F 1IN	2 U1,U6
PCBA MAIN (non-programmed)	30-15-0007	INSULATOR XTAL 4.9mm C-C	1 INSTALL UNDER X1
PCBA MAIN (non-programmed)	35-00-0220	PCB MAIN REV.D SPIDER2 SERIES	1
ASSY E/M CHASSIS SPIDER2 112	50-02-0222	PCBA POWER SUPPLY SPIDER2	1
PCBA POWER SUPPLY SPIDER2	01-12-0103	RES CARBON FILM 10K 1/4W 5% TH	1 R11
PCBA POWER SUPPLY SPIDER2	01-12-0473	RES CARBON FILM 47K 1/4W 5% TH	1 R12
PCBA POWER SUPPLY SPIDER2	01-20-0132	RES METAL OXIDE 1.3K 1W 5% TH	1 R13
PCBA POWER SUPPLY SPIDER2	03-00-0104	CAP CER DISC 100nF 50V 20% TH	2 C27-28
PCBA POWER SUPPLY SPIDER2	03-12-0688	CAP ELEC 6800uF 16V 20% RADIAL	1 C21
PCBA POWER SUPPLY SPIDER2	03-18-0478	CAP ELEC 4700uF 50V 20% SNAPIN	2 C18-19
PCBA POWER SUPPLY SPIDER2	03-36-0102	CAP ESTR 1nF 100V 5% TH	2 C29-30
PCBA POWER SUPPLY SPIDER2	03-41-0224	CAP X-CAP 0.22uF 275VAC 20%	0 C17
PCBA POWER SUPPLY SPIDER2	03-75-0102	CAP Y-CAP 1nF 250VAC 20% TH	2 C22-23
PCBA POWER SUPPLY SPIDER2	06-04-4002	DIODE SMALL-SIGNAL 100V 30A	4 D2-3,D6,D9
PCBA POWER SUPPLY SPIDER2	06-08-0820	DIODE ZENER 8.2V 5% 500mW	1 D4
PCBA POWER SUPPLY SPIDER2	06-16-0008	DIODE BRIDGE-RECT 8A 600V	1 D1
PCBA POWER SUPPLY SPIDER2	09-00-5401	TRANS PNP SMALL-SIGNAL 2N5401	1 Q1
PCBA POWER SUPPLY SPIDER2	11-10-2020	CHOKE WIDE BAND 1-5 TURNS	2 L1-2



PCBA POWER SUPPLY SPIDER2	21-20-1564	HDR PCB MT SIL 4-PIN X .156	1 H6
PCBA POWER SUPPLY SPIDER2	21-20-1565	HDR PCB MT SIL 5-PIN X .156	1 H4
PCBA POWER SUPPLY SPIDER2	21-20-3122	HDR PCB MT SIL 2-PIN x 7.92mm	1 H5
PCBA POWER SUPPLY SPIDER2	21-20-3123	HDR PCB MT SIL 3-PIN X 7.92mm	2 H2-3
PCBA POWER SUPPLY SPIDER2	21-30-0012-2	CBL SIL 12-PIN 2.54 x 76.2mm	1 J1A on power supply PCB to J1B on power amp break-away
PCBA POWER SUPPLY SPIDER2	21-30-0021	CAB DIL 10 PIN .100 PITCH 3.0	1 H1
PCBA POWER SUPPLY SPIDER2	35-00-0222	PCB POWER SUPPLY REV.A	1
ASSY E/M CHASSIS SPIDER2 112	50-02-0223	PCBA HEADPHONE/RJ45 SPIDER2	1
PCBA HEADPHONE/RJ45 SPIDER2	01-24-1000	RES 100R 1% 0805	2 R16-17
PCBA HEADPHONE/RJ45 SPIDER2	03-10-0331	CAP ELEC 330uF 10V 20% RADIAL	2 C11,C13
PCBA HEADPHONE/RJ45 SPIDER2	03-52-0102	CAP X7R 1nF 50V 20% 0805	6 C1,C3-5,C9-10
PCBA HEADPHONE/RJ45 SPIDER2	03-52-0104	CAP X7R 0.1uF 50V 20% 0805	3 C6-8
PCBA HEADPHONE/RJ45 SPIDER2	06-34-0031	DIODE GEN PUR DUAL 120V	2 D17-18
PCBA HEADPHONE/RJ45 SPIDER2	21-00-6616	JACK 1/4" TRS 6-PIN PCB MT	1 J4
PCBA HEADPHONE/RJ45 SPIDER2	21-16-0045	JACK RJ-45 8-PIN FEMALE	1 J3
PCBA HEADPHONE/RJ45 SPIDER2	30-18-3030	CLIP GND PCB .30x.30x.07	2 GF2,GF15
PCBA HEADPHONE/RJ45 SPIDER2	35-00-0223	PCB HEADPHONE/RJ45 REV.A	1 BREAKAWAY OF USER INTERFACE PCBA
ASSY E/M CHASSIS SPIDER2 112	50-02-0224	PCBA GUITAR INPUT SPIDER2	1
PCBA GUITAR INPUT SPIDER2	01-24-1001	RES 1.00K 1% 0805	2 R40-41
PCBA GUITAR INPUT SPIDER2	01-24-1004	RES 1.00M 1% 0805	0 R45
PCBA GUITAR INPUT SPIDER2	01-24-1502	RES 15.0K 1% 0805	1 R46
PCBA GUITAR INPUT SPIDER2	01-24-2211	RES 2.21K 1% 0805	1 R49
PCBA GUITAR INPUT SPIDER2	01-24-3321	RES 3.32K 1% 0805	1 R48
PCBA GUITAR INPUT SPIDER2	03-24-0273	CAP MET-POLY 27nF 50V 5% TH	1 C53
PCBA GUITAR INPUT SPIDER2	03-52-0104	CAP X7R 0.1uF 50V 20% 0805	1 C46
PCBA GUITAR INPUT SPIDER2	03-52-0470	CAP X7R 47pF 50V 20% 0805	1 C45
PCBA GUITAR INPUT SPIDER2	03-52-0473	CAP X7R 47nF 50V 20% 0805	2 C43,C51
PCBA GUITAR INPUT SPIDER2	06-34-0031	DIODE GEN PUR DUAL 120V	1 D5
PCBA GUITAR INPUT SPIDER2	12-54-0072	IC OP-AMP DUAL TL072CD SM	1 U14
PCBA GUITAR INPUT SPIDER2	21-00-6616	JACK 1/4" TRS 6-PIN PCB MT	1 J5
PCBA GUITAR INPUT SPIDER2	30-18-3030	CLIP GND PCB .30x.30x.07	1 GF1
PCBA GUITAR INPUT SPIDER2	35-00-0224	PCB GUITAR INPUT REV.D	1 BREAKAWAY OF MAIN PCBA

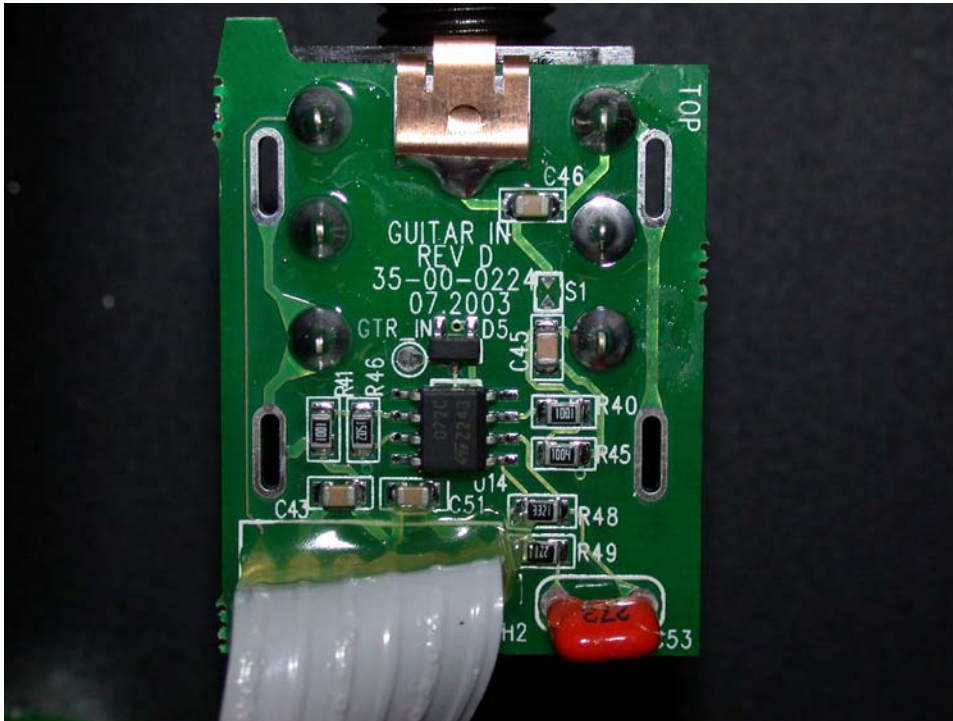


Engineering

**CONFIDENTIAL**

Spider II Theory of Operation

September 24, 2003



*-The Spider II Guitar In PCBA-*

**Guitar In PCBA (see page 1 of the schematic):**

**Analog signal consideration:**

An analog signal is input through jack J5, and is referenced to ground by R45, which establishes a 1Mega. Ohm input impedance. Maximum input signal amplitude before clipping is about 5Vpp(0 to 200Hz).

The signal then passes to U14-A, where the signal is buffered, and also amplified by the pre-emphasis filter in the feedback loop (R48, R49 and C53). This single-pole pre-emphasis filter adds gain starting around 200Hz. Maximum gain is about 8dB at 20kHz.

The output of U14-A is the “low gain” analog signal and is sent to the Main PCBA (IN\_LEFT), and it is also sent to the input of U14-B.

U14-B increases the “low gain” signal by a gain of 16, and this resulting “high gain” signal is then sent to the main PCBA (IN\_RIGHT).

**Digital signal consideration:**

The GUITAR\_SENSE' signal, which is sent to the main PCBA, indicates the presence of a jack plugged into J5. This signal is created by: J5 and the pull-up resistor R16 on the main PCBA. The signal is low if there is no jack, and high if a jack is plugged in.

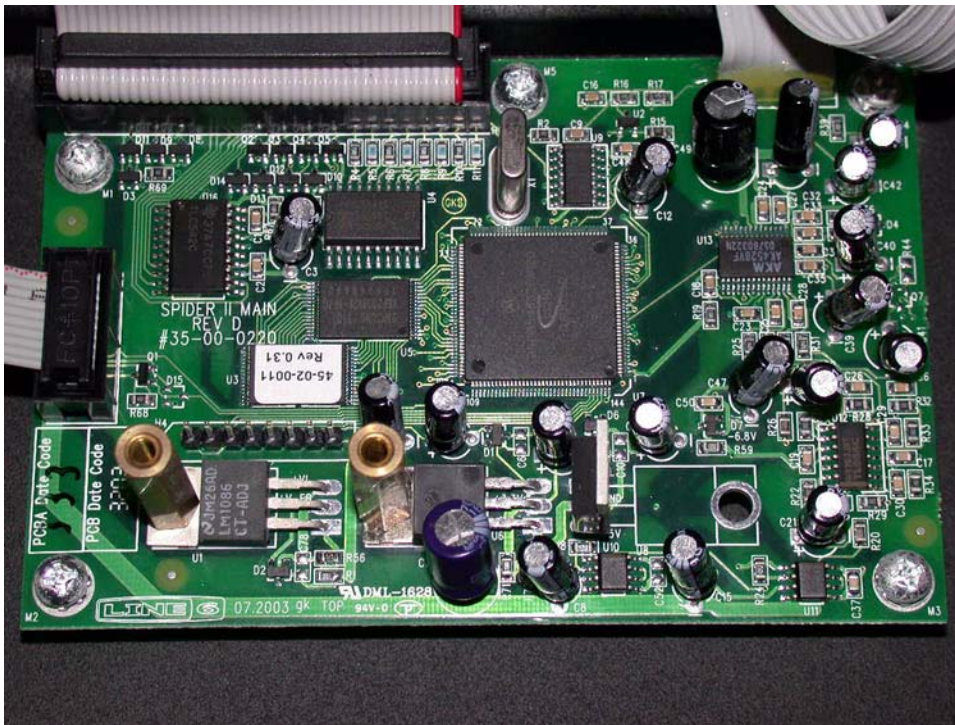
**EMI consideration:**

C45, C46 and GF1 help to shunt HF noise to the chassis and AGND' appropriately.

**ESD consideration:**

S1, GF1 and C46 provide a low-impedance HF shunt to chassis ground for ESD. D5 is a voltage clamp, and helps insure that ESD will not exceed the voltage rails of U14. R40 provides over-voltage current limiting for both D5 and U14.

**Main PCBA**



*-The Spider II MAIN PCBA-*

**Power supply:**

Power required by the Main, Guitar In, and User Interface PCBAs is provided by the local supply on the Main PCBA.

+VL and -VL (around +10.5VDC, -7VDC) arrive from the power supply PCBA via the cable connected to H1 on the Main PCBA.

There are four discrete supplies derived from +VL and -VL. They are: +V\_FB (+9VDC), +5V, +3.3V and -6.8V. Please reference page 5 of the schematic.

+V\_FB is the source for the floorboard connection on the User Interface PCBA and also the +3.3V supply. It is mainly comprised of U1, an adjustable voltage regulator. The output of U1 is determined by the two resistors R1 and R56. D2 provides over-voltage and under-voltage protection, while C77 provides filtering.

+5V is produced by U8, a linear regulator. D6 provides over-voltage and under-voltage protection, while C14 provides filtering. The +5V supply is also further filtered by R54, R55 and C41 (schematic page 2) to provide +5VA, which is the positive source for the analog input circuitry. On the same page, R54, C24 and C20 provide a local analog supply for the codec, U13. On page 4 of the schematic, the +5V rail is also filtered by R67 and C1 to create +5V\_AD, which is the source for the A/D converter and the User Interface PCBA potentiometers.

+3.3V is produced by U6, an adjustable voltage regulator. The output of U6 is determined by the two resistors R71 and R72. D1 provides over-voltage and under-voltage protection, while C5 provides filtering.

-6.8V is the negative source for the analog input circuitry, and it is generated mainly by the voltage drop across D7, a zener diode. R59, C31, C47 and C50 provide filtering.

### **Analog signal consideration:**

(See page 2 of schematic)

#### **Inputs to ADC:**

The “high gain” and “low gain” analog signals arrive from the Guitar In PCBA via the 6-conductor cable attached to location H3. The low gain signal IN\_LEFT is connected to the left input of codec U13 via R39 and C44, and the high gain signal IN\_RIGHT is connected to the right input of codec U13 via C42, R38, and R35. The series capacitors on each input are used as “DC blocking” capacitors since the analog inputs of U13 are biased to approximately ½ of its analog supply, or 2.5V. On the right channel “high gain” input to U13, a diode D4 is used to “clamp” the voltage to a safe level (-0.6V and +5VA+0.6V) since this channel is usually clipping with a nominal signal present at the input (R Ch. clipping starts around 0.31Vpp at input).

The resistors and capacitors (R50, R51, C39, C35 on LIN- and R37, R36, C40, C35 on RIN-) connected to the negative (-) inputs of U13 help ensure that each input is biased to ½ of the codecs supply (approximately +5VA).

The ADC of U13 converts the left and right analog signals into digital signals, which are then sent to the DSP (ADC\_DATA) for processing. Only one of the signals is chosen based on amplitude, before it is processed. The processing includes a digital de-emphasis filter to compliment the analog pre-emphasis filter.

### **Outputs of DAC:**

The codec receives the processed digital audio signal from the DSP at its serial data input (DAC\_DATA). The codec then converts the digital signal into analog signals, which are output on pins 25-28 of U13.

The analog outputs of codec U13 are differential, and have a DC bias of approximately  $\frac{1}{2}$  +5VA (about 2.5V). These differential analog signals are passed to U12-A and B, which is configured as a low-pass filter with gain of around 1.66. The frequency cutoff for the LPF is well above the audio pass-band. ( $f_c > 20\text{kHz}$ ) and is intended to reduce EMI. The resulting outputs of U12-A and B (+AUDIO\_L and +AUDIO\_R) are single-ended, and in-phase with the systems input. Since the power amplifier needs a differential signal (+/-AUDIO\_L/R signals sent to power amplifier via H1 [page5]), and the headphone amplifier inputs require an inverted signal, amplifiers U12-C and D are configured to create the inverted audio output signals (-AUDIO\_L and -AUDIO\_R).

### **Headphone amplifiers:**

The -AUDIO signals go to the headphone amplifiers U10 and U11. Although these are stereo amplifiers, a single amplifier is used for each output channel. This is because a mono jack plugged into the headphone output could potentially cause both channels of the amplifier to thermally shut-down. Using separate amplifiers, the un-shorted amplifier(s) are unaffected by this condition. C21 and C22 are “DC-blocking” capacitors, since the inputs of each amplifier are biased to about 2.5V. R18, R20, R24, and R26 provide gain of 5.2 for each amplifier. C8 and C15 are bypass capacitors and filter the bias voltage for the inputs and outputs. The “DC blocking” capacitors for the headphone amplifiers are located on the User Interface PCBA.

### **Digital signal consideration:**

(See page 3 of the schematic)

The system reset is provided by U2, and is active low. All other peripheral reset and enable signals are provided by U7. The DSP U7 provides system control, input/output, and processing of the audio signals.

### **Clocks:**

The 2MHz system master clock is composed of the components connected to pin 55 (EXTAL) of U7. All other clocks are generated from the master clock within U7, using a PLL. The filter for the PLL is made up of the components connected to pins 45 and 46 of U7.

### **Codec clocks:**

The codec clocks are generated by U7. Since the system sampling frequency ( $f_s$ ) is 39.0625 kHz, this is the frequency of the LRCLK. BCLK is the bit clock and runs at a speed of  $64f_s$ , or 2.5MHz. Finally, the codec master clock, or MCLK, runs at  $256f_s$ , or 10MHz.

### **Memories:**

There are two memories (U3 and U5) connected to the DSP via the 18-bit address bus, and the 8-bit data bus respectively. The flash memory, U3 holds the system code, and is loaded into the DSP after U2 removes the master reset. The other memory, U5 is an SRAM, and is used for buffering processed audio signals.

**DSP interface to User Interface PCBA:** (See pages 3 &4 of schematic)

**FBV:** The floorboard signals are buffered through U9, the same buffer, which is used in the master clock oscillator. The signals are serial differential output and input. Diodes D3,8,9,11 provide ESD/over-voltage protection for U7 and U9.

**LEDS:** The current source for the LED matrix on the UI PCBA is U4, a line driver which drives the LEDES with a 5VDC signal (~25%D.S.). Resistors R4-11 limit current to the LEDES. DSP port pins control the inputs of U4 directly with a refresh rate of around 10ms. The current sink for the LED matrix is the four individual MOSFETS Q2,3,4,5. Diodes D10,12,13,14 are used for ESD protection.

**ADC for UI:** U16 is an eleven channel ADC, which converts voltage levels for all potentiometers and button switches on the User Interface PCBA. This ADC is interfaced to the DSP via the SPI bus, and has a “read rate” of about one channel every 500us.

**JTAG:** The JTAG port of the DSP is available through the uninstalled H4 header. This connection is used for development and in-house software upgrades.

**Control/sense lines:**

**/MUTE:** Is the signal, which is used to mute the power amplifier, and is level-translated from 3.3V to +VL (around 7+V) by Q1 and R68.

**HP\_SENSE:** Is an active high signal, which indicates if a jack has been plugged into the headphone jack on the UI PCBA. The signal is generated by R65 and the HP jack.

**GUITAR\_SENSE:** See Guitar In PCBA above.

**MONO/STEREO:** Is a signal from the power amplifier indicating its configuration. A mono configuration is indicated by a “high” and a stereo configuration is indicated by a “low”.

## **Troubleshooting Guide – Spider II**

This section outlines some common problems that may be encountered when troubleshooting a Spider II.

1. The FLASH memory on the Spider II MAIN PCBA is updated with any setting changes (e.g. knob change, etc...) that occur at any time. It is not the same as the 7-second rule used on the POD XT and POD XT Pro. So if any settings are not being saved. Check for faulty soldering or components on the DSP's memory bus (which includes the DSP U7, the FLASH U3, and SRAM U5) especially the FLASH U3.
2. The board is powered up but the rest of the system is frozen (e.g. no LED's, no POTS or buttons work, no audio, etc). First, check that the crystal X1 is generating the 2MHz clock. This can be checked at U9 pin 6. Second, check for faulty soldering on the DSP's memory bus. Finally, check for faulty components on the DSP bus side or if possible check that the FLASH U3 is programmed.
3. The board powers up, the UI is displaying the correct items, the buttons and knobs work, but there is NO AUDIO. First, check the audio input circuitry and make sure audio makes it through the input op-amp U14 (on the guitar input PCBA) all the way to the CODEC U13 inputs. Second, make sure that the CODEC has the appropriate clocks driving it (See section CLOCK SYSTEM above). Third, check the audio path from the output of the CODEC to the power amp and the headphone circuitry. Fourth, check that the signal GUITAR\_SENSE is HIGH (HIGH means that a jack is plugged into the Spider II's guitar input.). If this signal is not HIGH then the guitar in jack J5 or the support circuitry for the sense line is faulty. If the system thinks that a plug is not plugged into the guitar jack it will automatically mute the audio. Fifth, the audio is correct all the way to the CODEC and the clocks are correct then it is possible that the DSP or an item on its bus is malfunctioning. At this point check for faulty soldering on the DSP or other items on its bus. Sixth, the audio is correct all the way to the power amp but no audio out of the power amp. Check that the mute circuitry for the power amp is functioning properly. Finally, the audio is correct all the way to the HEADPHONE amps but no audio out the headphone out. Check the headphone amp circuitry. Remember, there are two headphone amp IC's one for the left and one for the right output which go to the tip and ring respectively on the headphone output jack on the break-away. You may also want to check that the HP\_SENSE line on the MAIN PCBA is not LOW when the jack is plugged in.
4. The LED's work, but the POTS & BUTTONS do not. First, check if you can get into test mode by powering down and then power up while pressing the TAP TEMPO button. (If you are able to get into test mode you will see the Channel A and D LED's light up GREEN and the Channel B and C LED's light RED. If this happens run the POTS & BUTTON TEST by pressing the Channel B button and isolate the switch or pot that is not working). If you are not able to get into test mode check that the support circuitry for the switches is functioning properly and that the signal SW is getting from the ADC U16 on the MAIN PCB to the switch circuitry on the UI PCBA. Check that the ADC U16 on the MAIN PCB is getting the clocks and/or signals from the DSP.

5. The board seems to be working properly but the LED's do not work. First power down and then power up in test mode (Press and hold the TAP TEMPO button on power up, then press the Channel A button to run the LED Test). If the LED's fail in test mode check the LED\_COL[1:8] lines coming from the octal buff driver U4 or the DSP and the LED\_ROW[1:4] lines coming from FET's Q2-5 or from the DSP.
6. The board is running but the RJ-45 interface to floorboard (FBX, FBV, FBC, etc.) does not work. Check for faulty soldering on the DSP, IC U9, etc... Also, check that signals from the DSP or IC U9 are getting to the HEADPHONE\_RJ45 breakaway PCBA along with the 9V supply rail +VFB.

Additional Tips:

- ❑ Use the proper speaker cable connector on the 212 (use the speaker output PCB connector H7 rather than the one on the power supply PCB) when putting the amp back together.
- ❑ Pay attention to the fact that there is a bi-polar electrolytic cap on the power amp (I don't believe we use these caps in any other product).
- ❑ Be careful to not twist too much the soldered ribbon cables (guitar input PCBA to main, RJ45 breakaway to UI, power supply to power amp, and on 212\HD power amp to speaker out PCB).
- ❑ Point at a convenient grounding point for scope (I.e. the +5V regulator heat sink tap)
- ❑ Clearly understand the different AC voltage wiring configurations.
- ❑ Be very careful to fully remove the head mounting screws before re-installing the head in the cabinet to avoid scratching the front panel paint.
- ❑ Make sure that the guitar input PCB index is in the metal work slot before tightening the jack's nut.