

REV	DESCRIPTION	ECN #	INIT	DATE
B2	CHANGE C49 TO 62-0109	34987	JRG	9-18-07
B1	UPDATE AUDIODNA2, U7, TO 72-1002	33238	MTB	12-4-06
B0	PRE-PRODUCTION, REV. A WAS NEVER BUILT	32993	MTB	11-2-06
A0	PRE-PRODUCTION	TBD	MTB	9-14-06

REVISION HISTORY

HARMAN MUSIC GROUP
8760 South Sandy Parkway Sandy Utah 84070

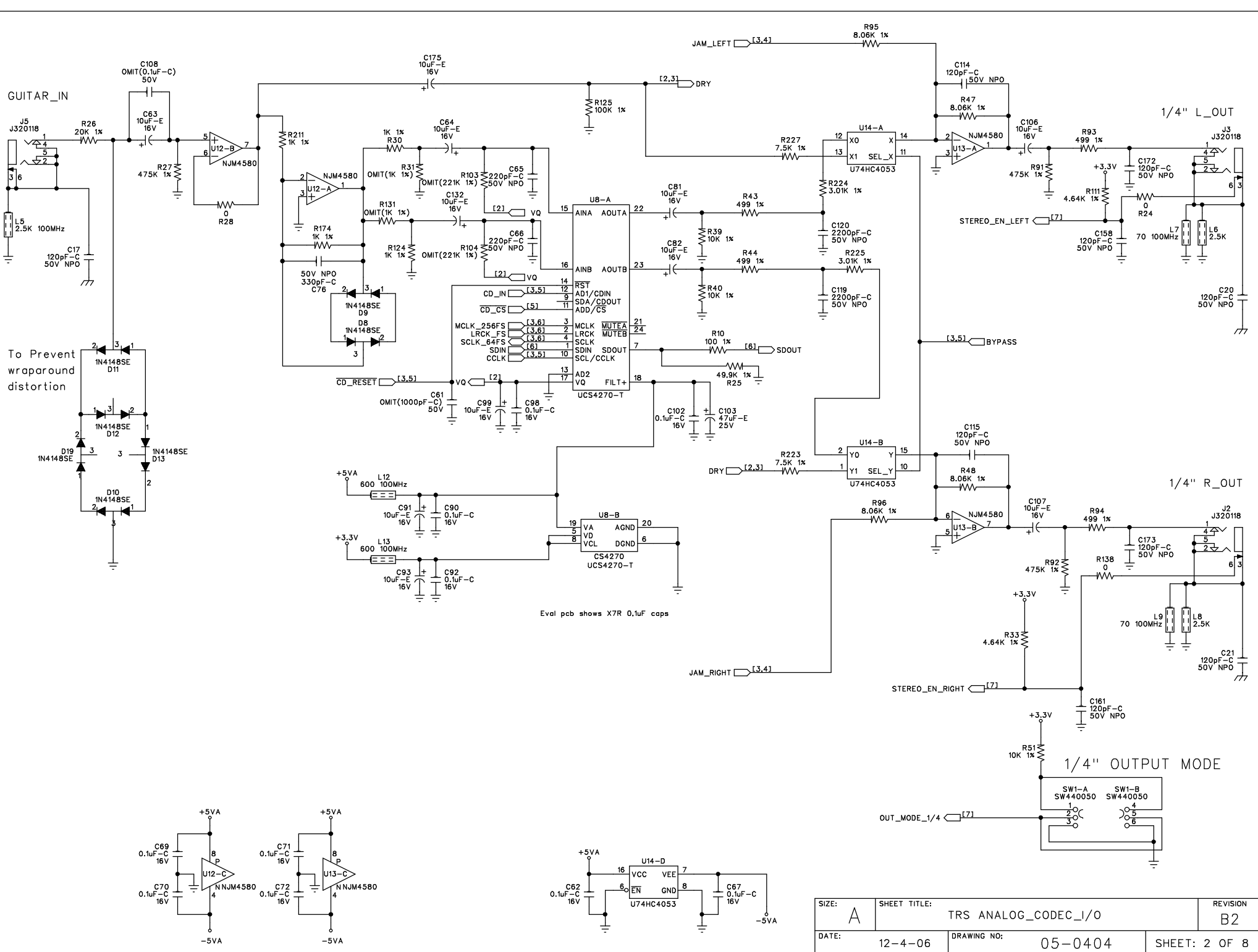
TITLE: **DigiTech RP350 GUITAR FLOOR PROCESSOR**

DESIGNER: **M. BYBEE** ENGINEER: **W. HOWLETT**

SIZE: A	DRAWING NO: 05-0404	REVISION: B2
DATE: 12-4-06	FILENAME: 050404B2.SCH	SHEET: 1 OF 8

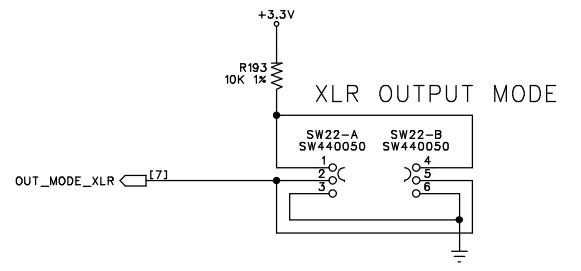
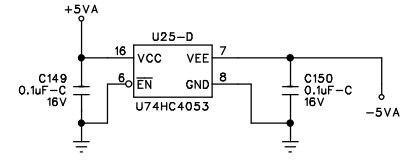
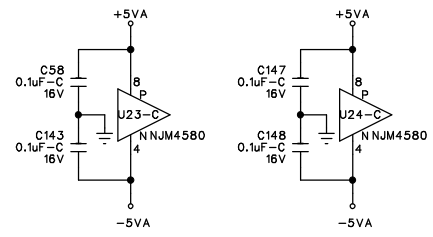
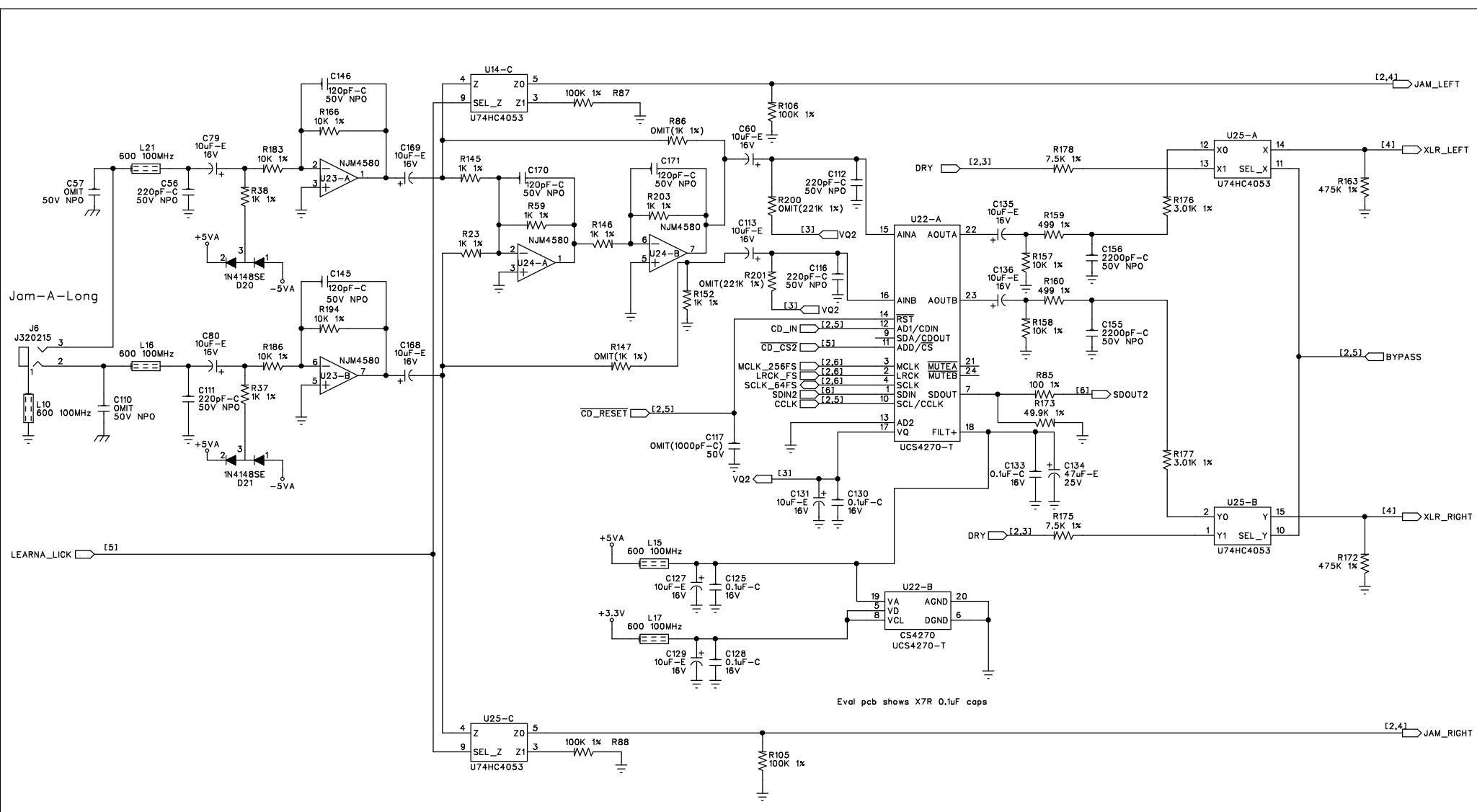
GUITAR_IN

To Prevent wraparound distortion

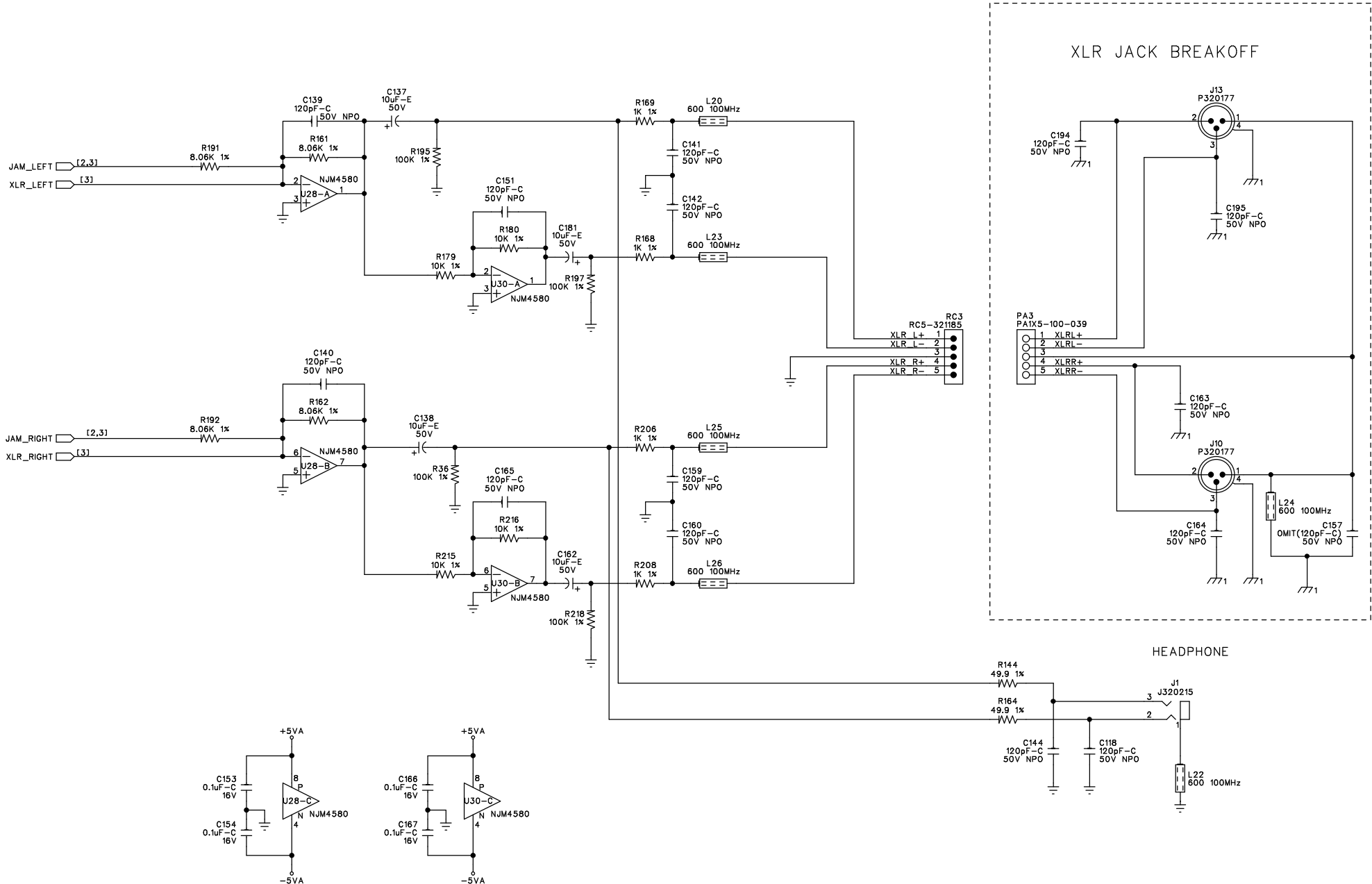


Eval pcb shows X7R 0.1uF caps

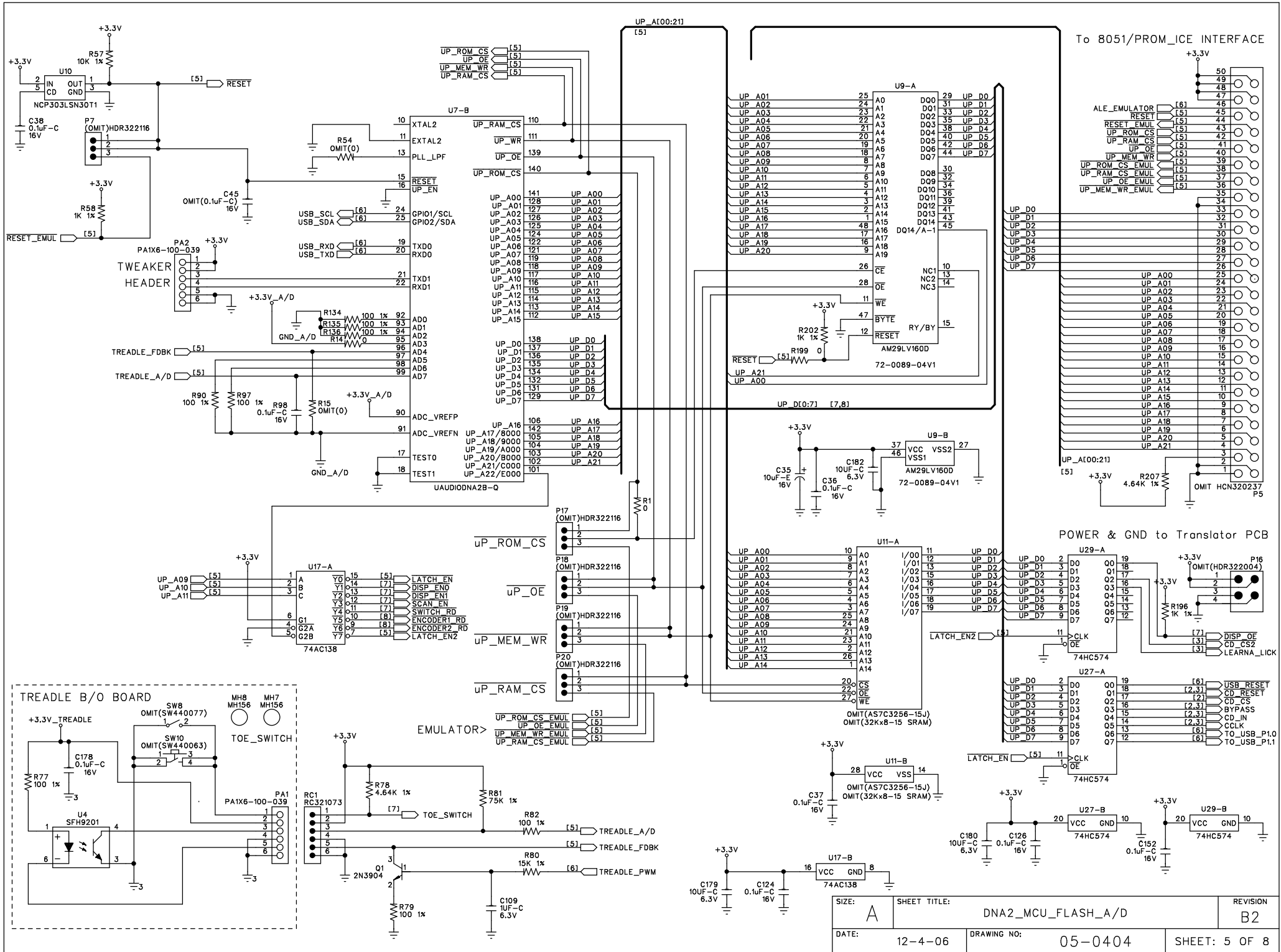
SIZE: A	SHEET TITLE: TRS ANALOG_CODEC_I/O	REVISION: B2
DATE: 12-4-06	DRAWING NO: 05-0404	SHEET: 2 OF 8



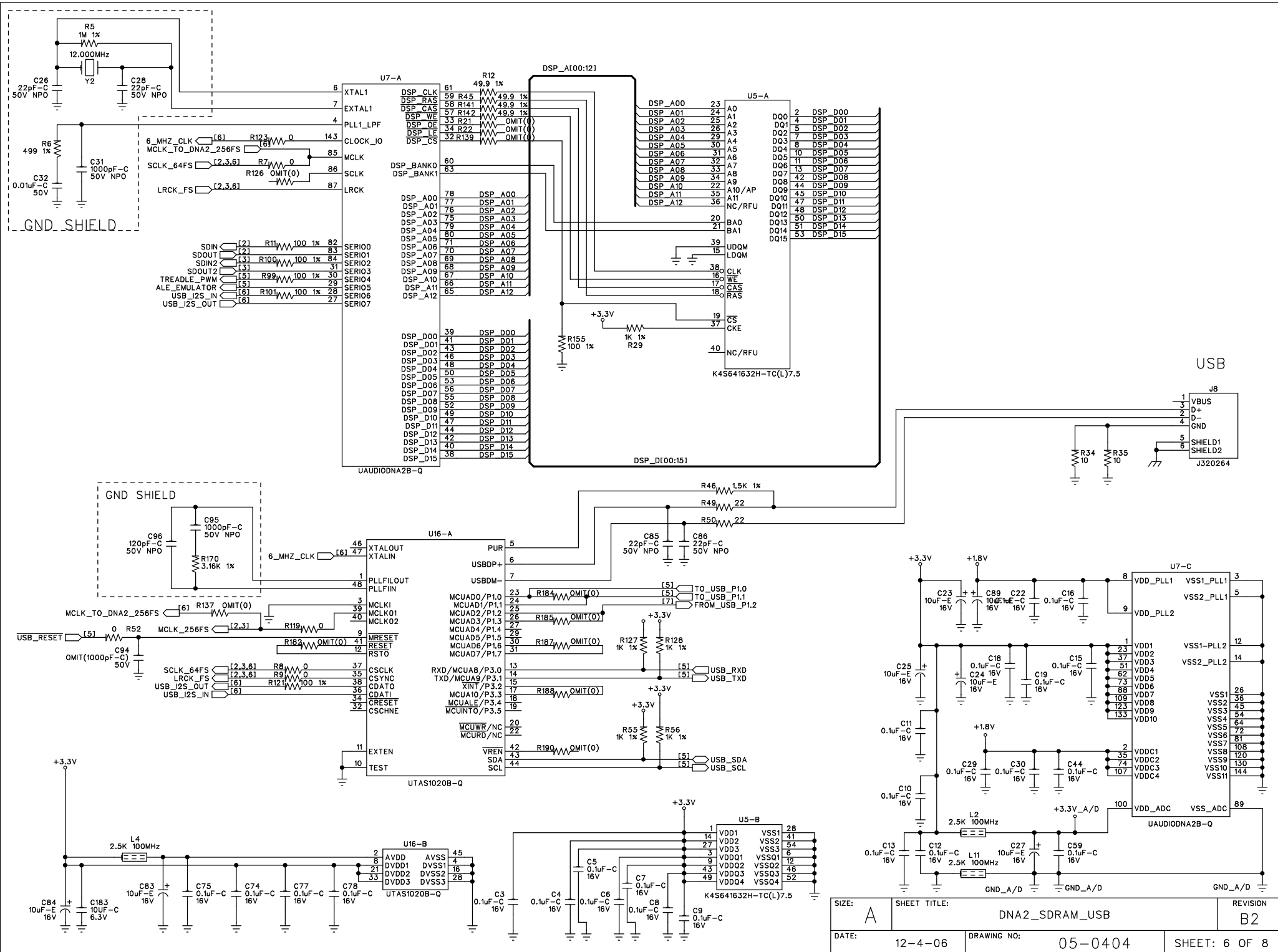
SIZE: A	SHEET TITLE: JAM-A-LONG 1/0	REVISION: B2
DATE: 12-4-06	DRAWING NO: 05-0404	SHEET: 3 OF 8



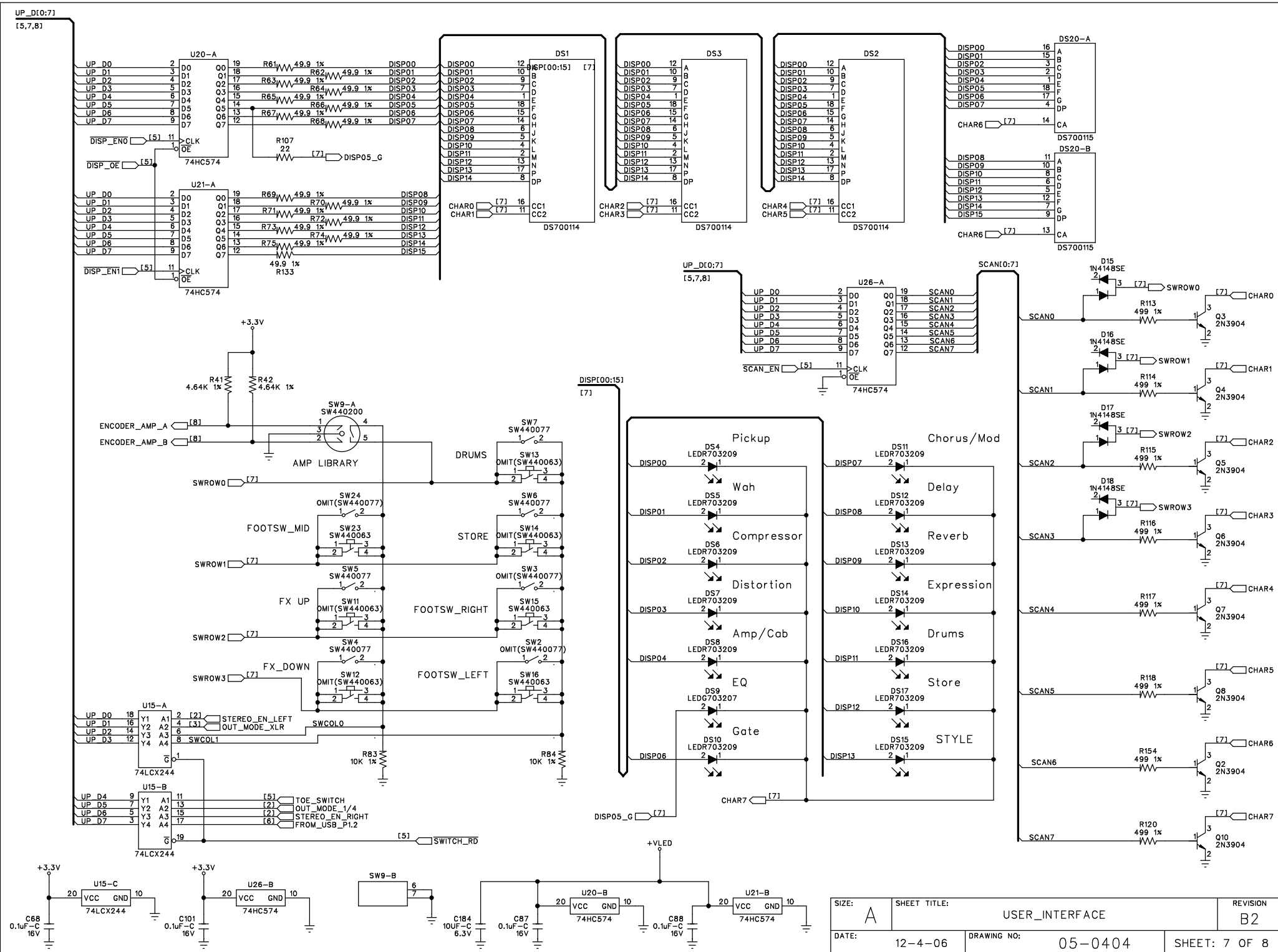
SIZE: A	SHEET TITLE: XLR JACKS	REVISION: B2
DATE: 12-4-06	DRAWING NO: 05-0404	SHEET: 4 OF 8

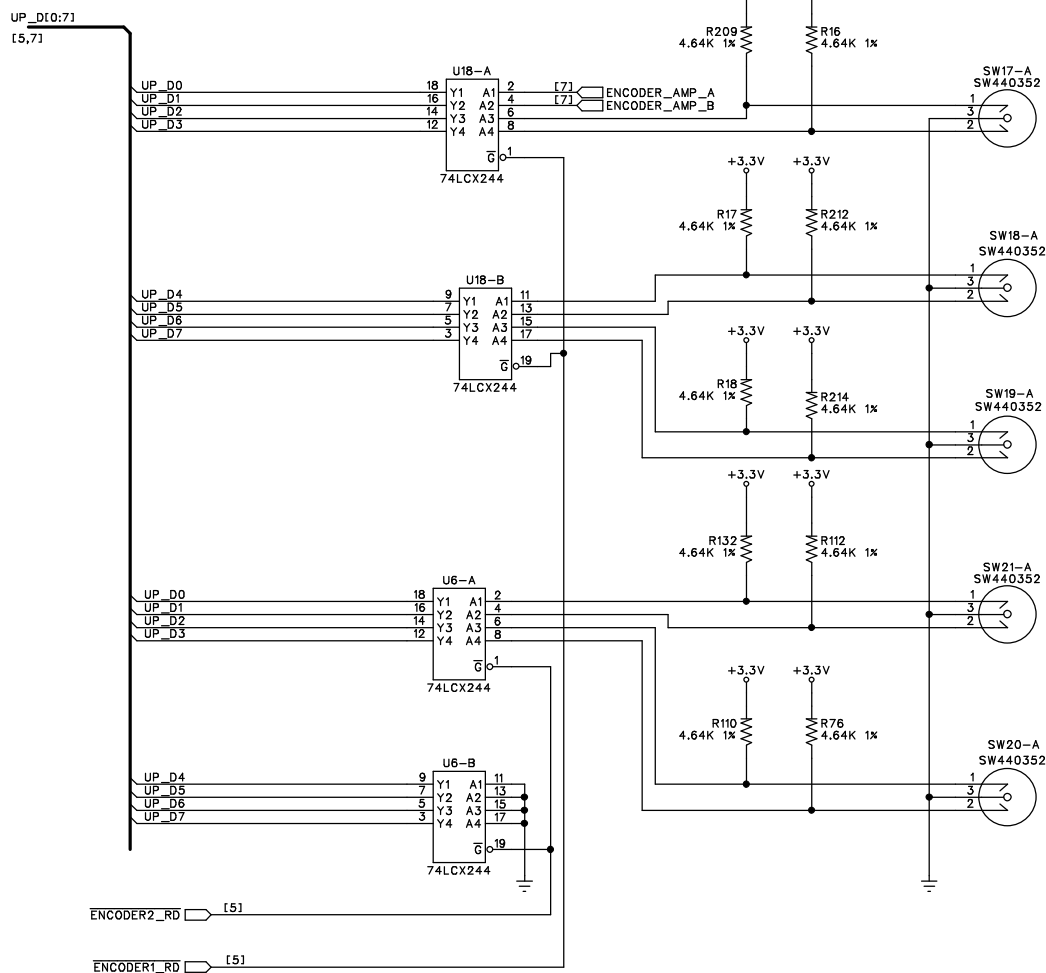


SIZE: A	SHEET TITLE: DNA2_MCU_FLASH_A/D	REVISION: B2
DATE: 12-4-06	DRAWING NO: 05-0404	SHEET: 5 OF 8



SIZE: A	SHEET TITLE: DNA2_SDRAM_USB	REVISION: B2
DATE: 12-4-06	DRAWING NO: 05-0404	SHEET: 6 OF 8





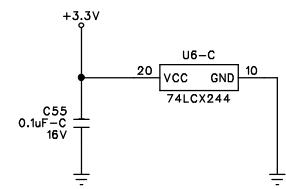
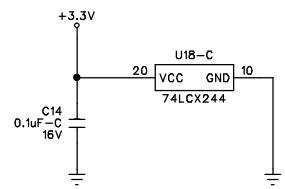
FX LIBRARY

FX MIX

MASTER LEVEL

AMP LEVEL

AMP GAIN



SIZE: A	SHEET TITLE: RP350 ENCODERS	REVISION: B2
DATE: 12-4-06	DRAWING NO: 05-0404	SHEET: 8 OF 8

Bill Of Materials for 050404B2.sch on Tue Sep 18 15:32:44 2007

Qty	Reference	HMG#	Description	Audit	Schematic Part	PCB Decal
1	PCB1	80-0404	PCB 80-0404 RP350	PT2142	80XXXXXY	BARCODE
4	A10 A15 A17 A19	NON-PART	NON-PART PCB ONLY BRKOFF PRT (.50 ROUTING)	PT2738	BRKOFF50	BRKOFF50
1	C32	62-3142	CAP 0.01uF CER 50V 10% X7R 0805 TA	PT1118	C0.01UC50K0805	0805
1	C33	62-3143	CAP 0.022uF CER 50V 10% X7R 0805 TA	PT1089	C0.022UC50K0805	0805
1	C40	62-1309	CAP 0.047uF CER 50V 20% Y5V 0603 TA	PT2650	C0.047UC50M0603	0603
80	C3-16 C18-19 C22 C29-30 C34 C36-38 C43-44 C50 C52-55 C58-59 C62 C67-75 C77-78 C87-88 C90 C92 C98 C100-102 C124-126 C128 C130 C133 C143 C147-150 C152-154 C166-167 C174 C176-178 C185-191 R98	62-1310	CAP 0.1uF CER 16V 20% Y5V 0603 TA	PT2696	C0.1UC16M0603	0603
2	C45 C122	OMIT	OMIT CAP 0.1uF CER 16V 20% Y5V 0603 TA (62-1310)	PT2711	C0.1UC16M06030	0603
2	C47 C51	62-1312	CAP 0.1uF CER 50V +80%/-20% Y5V 0603 TA	PT2687	C0.1UC50Z0603	0603
2	C104 C108	OMIT	OMIT CAP 0.1uF CER 50V +80%/-20% Y5V 0603 TA (62-1312)	PT2805	C0.1UC50Z06030	0603
2	C31 C95	62-3149	CAP 1000pF CER 50V 5% NPO 0805 TA	PT2924	C1000PC50J0805	0805
3	C61 C94 C117	OMIT	OMIT CAP 1000pF CER 50V 20% Y5V 0603 TA (62-1308)	PT3046	C1000PC50M06030	0603
2	C1-2	60-0110	CAP 1000uF EL 16V 20% 10x12R TA	MB7-16	C1000UE16MR2	REM200P
1	C46	62-0109	CAP 10uF CER 16V 10% X7R 1206 TA	JG0918	C10UC16K1206	1206
6	C42 C179-180 C182-184	62-3130	CAP 10uF CER 6.3V 10% X5R 0805 TA	PT3097	C10UC6.3K0805	0805
15	C23-25 C27 C35 C39 C83-84 C89 C91 C93 C99 C127 C129 C131	60-1063	CAP 10uF EL 16V 20% GP 4X5.5 SM TA	PT3218	C10UE16M4X5.5S	CAP4X5.4
18	C48-49 C60 C63-64 C79-82 C106-107 C113 C132 C135-136 C168-169 C175	60-0049-01	CAP 10uF EL 16V 20% GP 4X7R 5LS TA	PT1080	C10UE16MR	RED200P
4	C137-138 C162 C181	60-0090	CAP 10uF EL 50V 20% GP 5x11R 5LS TA	PT1206	C10UE50MR	REE200P
28	C17 C20-21 C96 C114-115 C118 C139-142 C144-146 C151 C158-161 C163-165 C170-173 C194-195	62-1304	CAP 120pF CER 50V 5% NPO 0603 TA	PT2655	C120PC50J0603	0603
4	C41 C57 C110 C157	OMIT	OMIT CAP 120pF CER 50V 5% NPO 0603 TA (62-1304)	PT2750	C120PC50J06030	0603
1	C109	62-0120	CAP 1UF CER 6.3V 10% X5R 0603 TA	PT3125	C1UC6.3K0603	0603
4	C119-120 C155-156	62-3150	CAP 2200pF CER 50V 5% NPO 0805 TA	PT2922	C2200PC50J0805	0805
6	C56 C65-66 C111-112 C116	62-1313	CAP 220pF CER 50V 5% NPO 0603 TA	PT2923	C220PC50J0603	0603
4	C26 C28 C85-86	62-1301	CAP 22pF CER 50V 5% NPO 0603 TA	PT2658	C22PC50J0603	0603
1	C97	62-0121	CAP 22UF CER 6.3V 20% X5R 1206 TA	PT3149	C22UC6.3M1206	1206
1	C76	62-1320	CAP 330pF CER 50V 5% NPO 0603 TA	PT2941	C330PC50J0603	0603
1	C105	60-0000	CAP 330uF EL 16V 20% GP 8x11R 5LS TA	PT2862	C330UE16MR2	REJ200P
2	C103 C134	60-0021	CAP 47uF EL 25V 20% GP 6.3x6 SM TA	PT3214	C47UE25M6.3X6S	CAP6.3X6
6	D1-6	70-0017	DIO 1N4005 600V 1A AMMO TA	PT1455	D1N4005-R	RDB200
13	D8-13 D15-21	70-0113	DIO MMBD4148SE DUAL 75V 600mA SOT-23 TA	PT1326	D1N4148SE-S	SOT-23
3	DS1-3	70-0114	DIS LTP3784 GRN DUAL 14 SEGMENT	PT3093	DS700114	DS14SEG2
1	DS20	70-0115	DIS RED DUAL 7-SEG DIP	PT3092	DS700115	DISPLAY18
1	D7	70-0147	DIO SCHOTTKY 1A SS14 DO-214AC/SMA	PT1877	DSS14S	DO-214AC/SMA
1	F1	OMIT	OMIT FUSE 1.25A POLY SWITCH RESETABLE (32-0186)	DB906	F1.25A320186-0	FUSE6
9	A3-4 A7-9 A11-14	NON-PART	NON-PART FIDUCIAL TARGET FOR AUTO INSERTION	PT2904	FIDUCIAL-AI	FIDUCIAL-AI
4	A1-2 A5-6	NON-PART	NON-PART FIDUCIAL TARGET FOR XRAY	PT2905	FIDUCIAL-XRAY	FIDUCIAL-XRAY
1	P5	OMIT	OMIT HCN 50P 0.5MM FML VERT ZIF SM (32-0237)	SM0606	HCN320237-0	HC225VFMZIF
1	P16	OMIT	HDR 4 PIN 0.118" SPC 2 X 2 LKG SHD POL VERT MALE (32-2004)	MB8-06	HDR322004-0	HC22118LSPM

5	P7 P17-20	OMIT	HDR 3 PN .1" SPC 1 X 3 VERT MALE (32-2116)	PT2951 HDR322116-0	HC3M
1	J7	32-0089	CON JACK POWER BARREL JACK 2.5MM	PT2867 J320089	J320089
3	J2-3 J5	32-0118	CON JACK 1/4 PHONO PLAIN NOSE THREAD SLIMLINE	PT1792 J320118	J320118
2	J1 J6	32-0215	CON JACK 3.5MM EARPHONE HZ MT	PT2972 J320215	J320215
1	J8	32-0264	CON JACK USB SHLD I/O TYPE B RCPTL W/TAB	PT3319 J320264	J320264
1	LBL1	30-0121	LABEL BARCODE AUTOINSERTABLE RAW	PT2790 LABEL300121	LABEL300121
1	DS9	70-3207	LED GREEN D1206 T&R	PT1902 LEDG703207	D1206
13	DS4-8 DS10-17	70-3209	LED RED D1206 T&R	PT1901 LEDR703209	D1206
13	L10 L12-13 L15-17 L20-26	26-0000	IND FBD 600 OHM @ 100Hz 200mA 0603 TA	PT2728 LFB260000	0603
6	L2 L4-6 L8 L11	26-0001	IND FBD 2.5K OHM @ 100Hz 50mA 0603 TA	PT2729 LFB260001	0603
4	L1 L7 L9 L14	26-0215	IND FBD 70 OHM @ 100MHz RIC200 TA	PT1262 LFB260215	RIC200
1	L19	OMIT	OMIT IND FBD 70 OHM @ 100MHz RIC200 TA (26-0215)	PT2678 LFB260215-0	RIC200
1	L18	26-0017	IND 3.3uH 800mA SM	PT3285 LI260017	LQH43C
1	GP1	NON-PART	NON-PART MECCA GND/PWR TIE POINT 4 POS	PT2482 MECCA4	MECCA4
11	MH3-13	NON-PART	NON-PART MOUNTING HOLE 0.156" NON-PLATED #6	PT3000 MH156	MH156
2	MH1-2	NON-PART	NON-PART TOOLING PIN HOLE 156MIL HOLE	PT2794 MH156-TOOL	MH156-TOOL
1	MP1	NON-PART	NON-PART MECHANICAL PLATED HOLE 300 PAD 156 HOLE #6	PT3001 MP300H156	MP300H156
2	J10 J13	32-0177	CON PLUG XLR R/A PCA A SERIES	PT2947 P320177	XLRM-2
1	MP2	NON-PART	NON-PART PD ARY 1 PN 0.039" HLE	PT1550 PALX1-000-039	PALX1-000-039
1	PA3	NON-PART	NON-PART PAD ARRAY 5 PIN 0.1" SPC 0.039" HOLE	PT1547 PALX5-100-039	PALX5-100-039
2	PA1-2	NON-PART	NON-PART PAD ARRAY 6 PN 0.1" SPC 0.039" HLE	PT2134 PALX6-100-039	PALX6-100-039
9	Q1-8 Q10	70-1058	XSTR 2N3904 NPN SOT-23 TA	PT1203 Q2N3904-S	SOT-23
15	R1 R7-9 R14 R24 R28 R52 R119 R123 R138 R148-149 R151 R199	50-1300	RES 0 5% 1/16W SM 0603 TA	PT2508 R0-B5-0603	0603
14	R15 R21-22 R54 R126 R137 R139 R150 R182 R184-185 R187-188 R190	OMIT	OMIT RES 0 5% 1/16W SM 0603 TA (50-1300)	PT2509 R0-B5-06030	0603
1	R46	52-1314	RES 1.5K 1% 1/16W SM 0603 TA	PT2551 R1.5KB1-0603	0603
16	R10-11 R77 R79 R82 R85 R90 R97 R99-101 R121 R134-136 R155	52-1304	RES 100 1% 1/16W SM 0603 TA	PT2512 R100-B1-0603	0603
10	R2 R36 R87-88 R105-106 R125 R195 R197 R218	52-1360	RES 100K 1% 1/16W SM 0603 TA	PT2613 R100KB1-0603	0603
2	R34-35	50-1301	RES 10 5% 1/16W SM 0603 TA	PT2516 R10-B5-0603	0603
17	R39-40 R51 R57 R83-84 R157-158 R166 R179-180 R183 R186 R193-194 R215-216	52-1338	RES 10K 1% 1/16W SM 0603 TA	PT2584 R10KB1-0603	0603
1	R80	52-1344	RES 15K 1% 1/16W SM 0603 TA	PT2596 R15KB1-0603	0603
24	R23 R29-30 R37-38 R55-56 R58-59 R124 R127-128 R145-146 R152 R168-169 R174 R196 R202-203 R206 R208 R211	52-1313	RES 1K 1% 1/16W SM 0603 TA	PT2550 R1KB1-0603	0603
4	R31 R86 R131 R147	OMIT	OMIT RES 1K 1% 1/16W SM 0603 TA (52-1313)	PT2943 R1KB1-06030	0603
1	R5	52-1372	RES 1M 1% 1/16W SM 0603 TA	PT2625 R1MB1-0603	0603
1	R26	52-1346	RES 20K 1% 1/16W SM 0603 TA	PT2598 R20KB1-0603	0603
4	R103-104 R200-201	OMIT	OMIT RES 221K 1% 1/16W SM 0603 TA (52-1364)	MB10-0 R221KB1-06030	0603
3	R49-50 R107	50-1302	RES 22 5% 1/16W SM 0603 TA	PT2518 R22-B5-0603	0603
4	R176-177 R224-225	52-1321	RES 3.01K 1% 1/16W SM 0603 TA	PT2559 R3.01KB1-0603	0603
1	R170	52-1322	RES 3.16K 1% 1/16W SM 0603 TA	PT2560 R3.16KB1-0603	0603
1	R4	OMIT	OMIT RES 30.1K 1% 1/16W SM 0603 TA (52-1352)	PT2801 R30.1KB1-06030	0603
16	R16-18 R33 R41-42 R76 R78 R110-112 R132 R207 R209 R212 R214	52-1328	RES 4.64K 1% 1/16W SM 0603 TA	PT2568 R4.64KB1-0603	0603
5	R27 R91-92 R163	52-1368	RES 475K 1% 1/16W SM 0603 TA	PT2621 R475KB1-0603	0603

22	R12 R45 R61-75 R133 R141-142 R144 R164	52-1302	RES 49.9 1% 1/16W SM 0603 TA	PT2510 R49.9-B1-0603	0603
3	R25 R108 R173	52-1356	RES 49.9K 1% 1/16W SM 0603 TA	PT2609 R49.9KB1-0603	0603
15	R6 R43-44 R93-94 R113-118 R120 R154 R159-160	52-1308	RES 499 1% 1/16W SM 0603 TA	PT2545 R499-B1-0603	0603
4	R175 R178 R223 R227	52-1335	RES 7.5K 1% 1/16W SM 0603 TA	PT2581 R7.5KB1-0603	0603
1	R81	52-1359	RES 75K 1% 1/16W SM 0603 TA	PT2612 R75KB1-0603	0603
10	R32 R47-48 R95-96 R109 R161-162 R191-192	52-1336	RES 8.06K 1% 1/16W SM 0603 TA	PT2582 R8.06KB1-0603	0603
1	R3	OMIT	OMIT RES 9.09K 1% 1/16W SM 0603 TA (52-1337)	DB905 R9.09KB1-0603-O	0603
1	RC3	32-1185	RBN CBL 5 CND FLEX 0.100 SPC 2" LONG CB	PT1375 RC5-321185	RC5-321185
1	RC1	32-1073	RBN CBL 6 COND 0.1 SP 4" LONG	PT2346 RC6-321073	PA1X6-100-039
2	SC1-2	34-0036	SWITCH CAP BLACK ROUND 6.2mm X 9mm	PT2506 SC340036	SC340036
2	SW1 SW22	44-0050	SWITCH DPDT MINI IN-OUT 6 PIN E-SWITCH	PT1256 SW440050	SW440050
3	SW15-16 SW23	44-0063	SWITCH 6x6mm SPST 50mA 12VDC SMT TA	PT3088 SW440063	SW440063
5	SW10-14	OMIT	OMIT SWITCH 6x6mm SPST 50mA 12VDC SMT TA (44-0063)	PT3089 SW440063-O	SW440063
4	SW4-7	44-0077	SWITCH SPST TACT RADIAL	PT1612 SW440077	SW440077
4	SW2-3 SW8 SW24	OMIT	OMIT SWITCH SPST TACT RADIAL (44-0077)	PT2721 SW440077-O	SW440077
1	SW9	44-0200	SWITCH ENCODER 20mm D-SHAFT 30 POS W/SW VERT MNT	MB3-06 SW440200	SW440200
5	SW17-21	44-0352	ENCODR 13mm 24 DNT ROT 20MM D-SFT VRT	PT3322 SW440352	SW440187
1	TP1	OMIT	OMIT SMT TEST POINT ENGINEERING PROBE POINT(00-0081)	MRC070 TP000081-O	TESTPOINTSMT1
1	U11	OMIT	OMIT IC 32K x 8 SRAM 15ns SOJ28 (72-6318)	PT2874 U32K8S15-JO	SOJ28-300
1	U5	72-0099	IC K4S641632H-TC(L)7.5 SDRAM	PT2981 U64M4M16SD7-T	TSOP2-54
1	U17	72-1452	IC, 74AC138, 1-OF-8 DECODER/DEMULTIPLEXER, SO16	PT1420 U74AC138-S	SO16
2	U14 U25	72-0087	IC, 74HC4053, MUX, TRIPLE 2 CHANNEL ANALOG, SO16	PT1566 U74HC4053-S	SO16
5	U20-21 U26-27 U29	72-1263	IC, 74HC574, FLIP-FLOP, EDGE TRIGGERED, OCTAL, SO20W, T&R	PT1352 U74HC574-S	SO20W
3	U6 U15 U18	72-0020	IC, 74LCX244, LV, OCTAL BUFFER LINE DRV W/3-STATE OUTPUTS, SO20W, T&R	PT1798 U74LCX244-S	SO20W
1	U3	70-4127	REG, 79L05, -5V, 100ma, 3-TERMINAL NEGATIVE, TO-92, AMMO	PT1651 U79L05	TO92(GIO)-V
1	U7	72-1002	IC AUDIO DNA2 QFP144-20X20 REV.B	MB1106 UAUDIODNA2B-Q	QFP144-20X20
2	U8 U22	72-0171	IC CS4270 CODEC 24 BIT 192kHz STEREO AUDIO	MB1005 UCS4270-T	TSSOP24
1	U2	70-0074	V-REG LM1117DTX 5V TA TO-252 (DPAK)	PT2929 ULM1117DTX-5.0-S	TO252(DPAK)
1	U1	70-0190	REG MP2359 ADJ SW 1.2A SOT23-6	DP 7-2 UMP2359-S	SOT23-6
1	U10	72-0123	IC NCP303LSN30T1 V-DET 3V LOWOUT DLY SM	PT3115 UNCP303LSN30T1-S	SOT23-5
6	U12-13 U23-24 U28 U30	72-1480	IC NJM4580 DUAL OP-AMP SO8 CB	PT1374 UNJM4580-S	SO8
1	U9	72-0089-04V1	IC AM29LV160D 16 MEG 3.3V FLASH MEMORY RP250 V1	PT2838 UP720089	TSOP48
1	U4	70-3169	IC SFH9201 REFLECTIVE INTERRUPTER SM SO6	PT2333 USFH9201-S	SO6-1
1	U16	72-0071	IC TSA1020B USB STREAMING CONTROLLER SM	PT2890 UTAS1020B-Q	QFP48-7X7
1	U19	70-0171	IC 200mA 1.8V LDO REGULATOR SOT-26/SOT-23	MB7-06 UTPS79318-S	SOT-26
1	Y2	76-0201	XTAL 12.000MHz MTL CAN SM TA	PT1538 Y12.000M760201	XTAL2-V