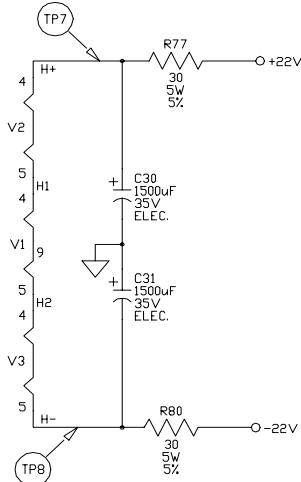
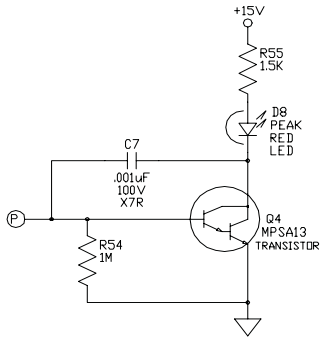


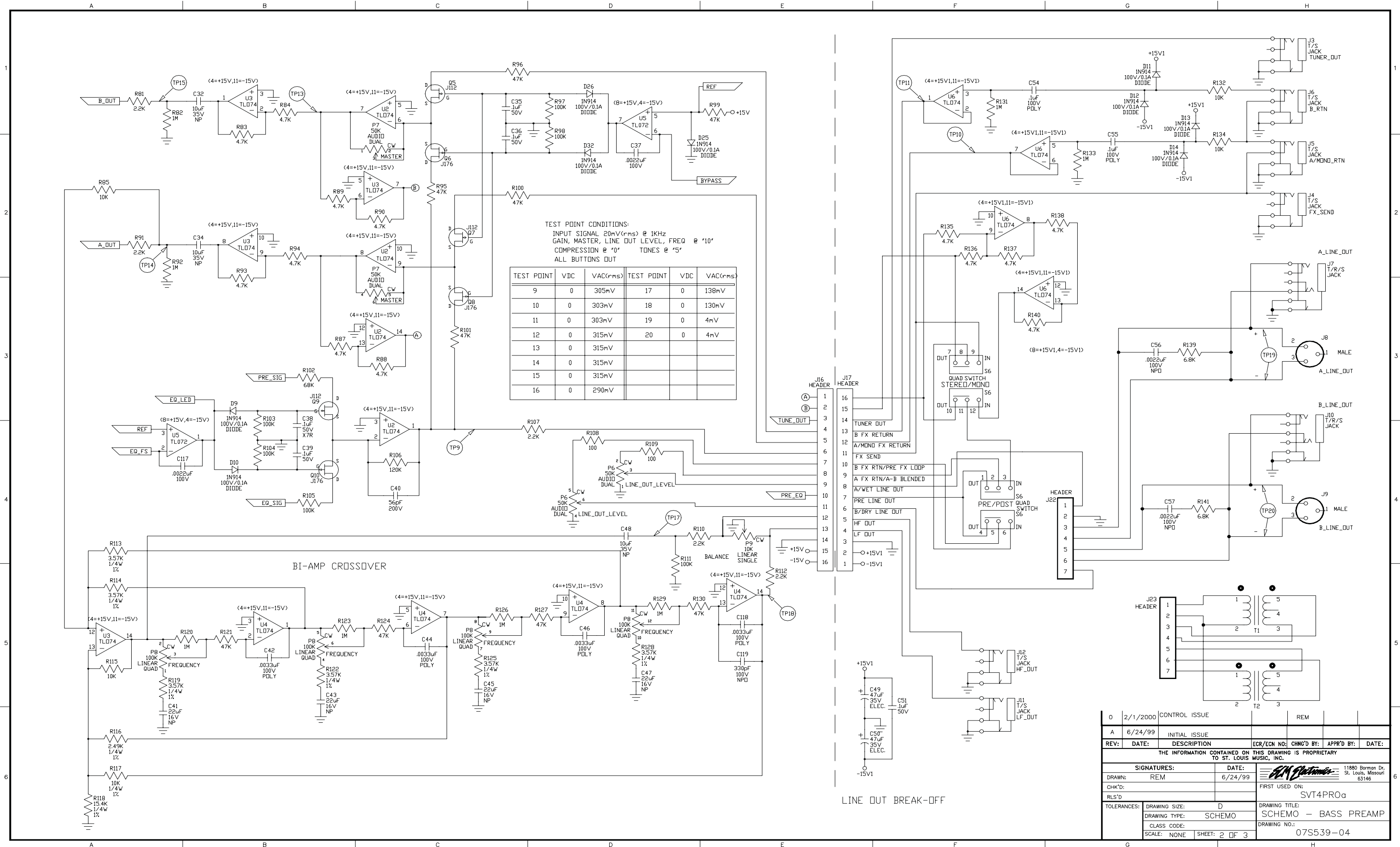
TEST POINT CONDITIONS:
INPUT SIGNAL 20mV(rms) @ 1KHz
GAIN, MASTER, LINE OUT LEVEL, FREQ @ '10'
COMPRESSION @ '0' TONES @ '5'
ALL BUTTONS OUT

TEST POINT	VDC	VAC(rms)
1	0	20mV
2	0	500mV
3	0	866mV
4	0	1.27V
5	95mV	45.5mV
6	0	162mV
7	19.2V	12mV
8	-19.2V	12mV



TUBE INSTALLATION CHART		
V1	97B127-01	12AX7
V2	95F127-01	12AX7
V3	95F127-01	12AX7

0	2/1/2000	CONTROL ISSUE		REM		
A	6/24/99	INITIAL ISSUE				
REV:	DATE:	DESCRIPTION	ECR/ECN NO:	CHNG'D BY:	APPR'D BY:	DATE:
THE INFORMATION CONTAINED ON THIS DRAWING IS PROPRIETARY TO ST. LOUIS MUSIC, INC.						
SIGNATURES:		DATE:		11880 Borman Dr. St. Louis, Missouri 63146		
DRAWN: REM		6/24/99		FIRST USED ON:		
CHK'D:				SVT4PROa		
RLS'D				SCHEMO - BASS PREAMP		
TOLERANCES:		DRAWING SIZE: D		DRAWING NO.:		
		DRAWING TYPE: SCHEMO		07S539-04		
		CLASS CODE:				
		SCALE: NONE		SHEET: 1 of 3		



0	2/1/2000	CONTROL ISSUE	REM		
A	6/24/99	INITIAL ISSUE			
REV:	DATE:	DESCRIPTION	ECR/ECN NO:	CHNG'D BY:	APPR'D BY: DATE:
THE INFORMATION CONTAINED ON THIS DRAWING IS PROPRIETARY TO ST. LOUIS MUSIC, INC.					
SIGNATURES:		DATE:		11880 Borman Dr. St. Louis, Missouri 63146	
DRAWN: REM		6/24/99		FIRST USED ON:	
CHK'D:				SVT4PROa	
RLS'D				SCHEMO - BASS PREAMP	
TOLERANCES:		DRAWING SIZE: D		DRAWING NO.:	
		DRAWING TYPE: SCHEMO		07S539-04	
		CLASS CODE:			
		SCALE: NONE		SHEET: 2 OF 3	

