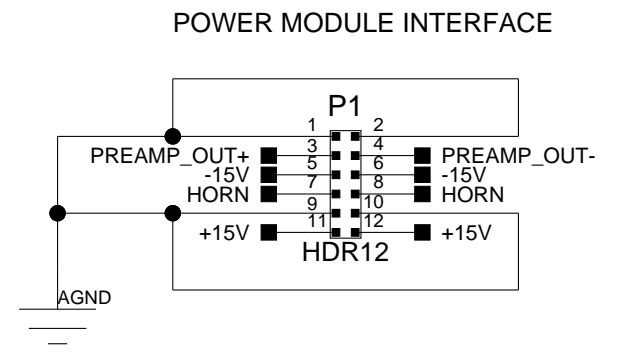
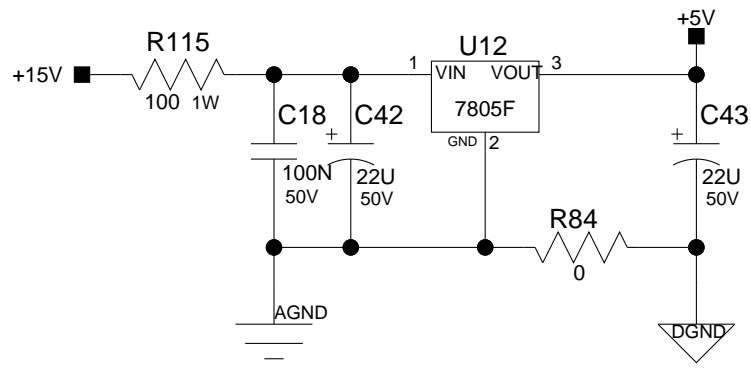
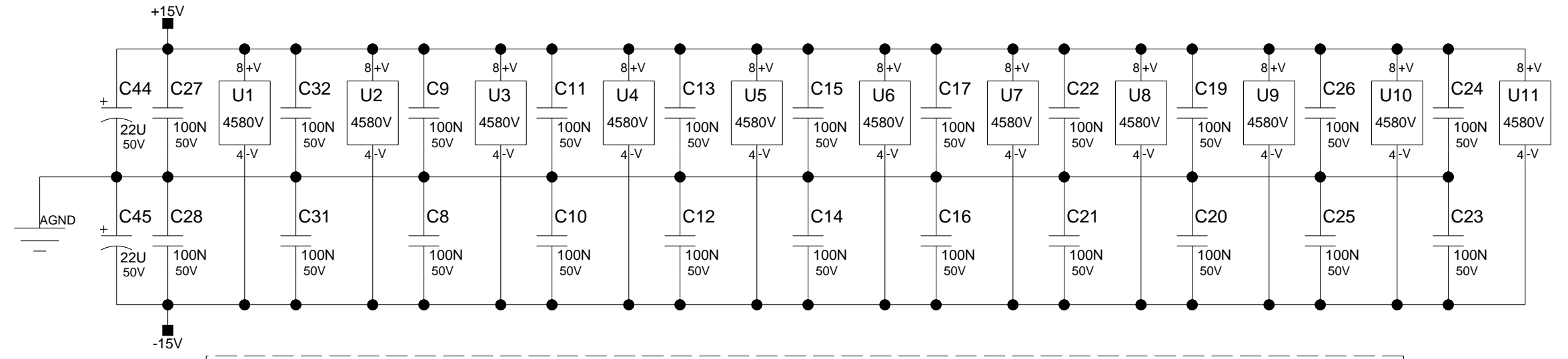


REV	Eng	Date:	Revision Description	ECN#
A				
B				
C				
D				
E				
F				

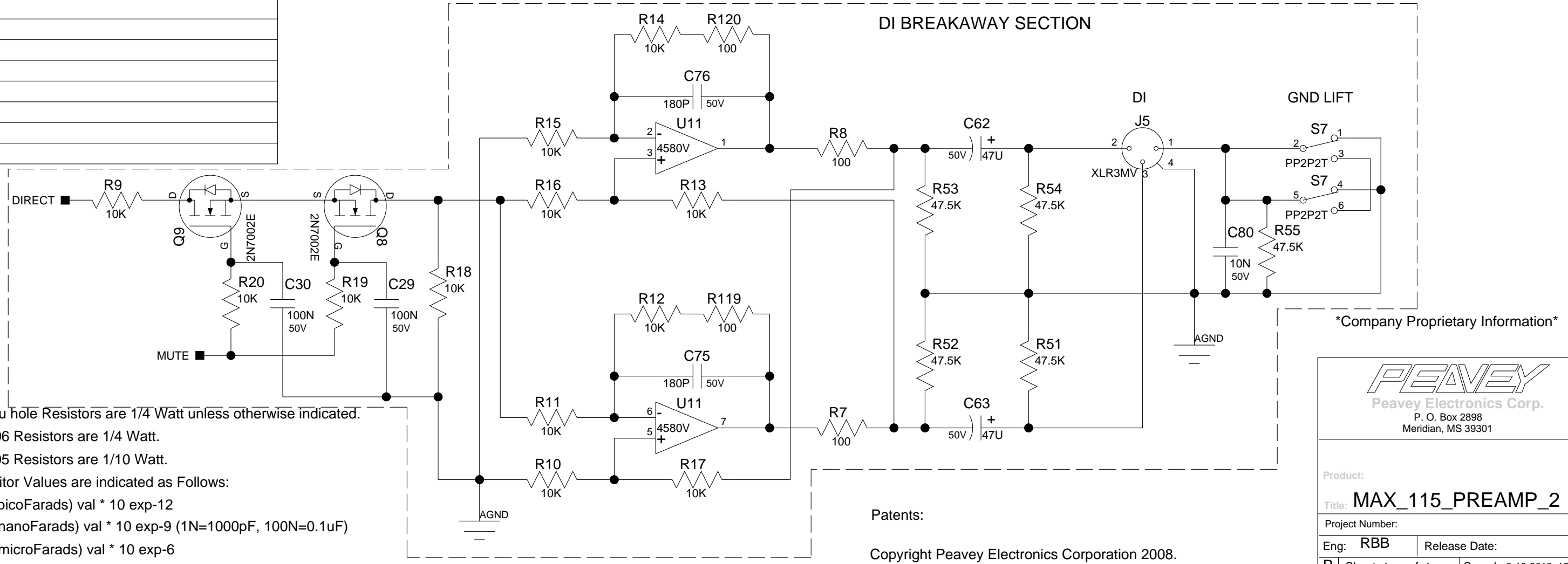


INDEX

SHEET	DESCRIPTION
1	POWER SUPPLY / DI
2	PREAMP
3	OD / PSYCHO PROCESSOR / MASTER
4	TUNER



DI BREAKAWAY SECTION



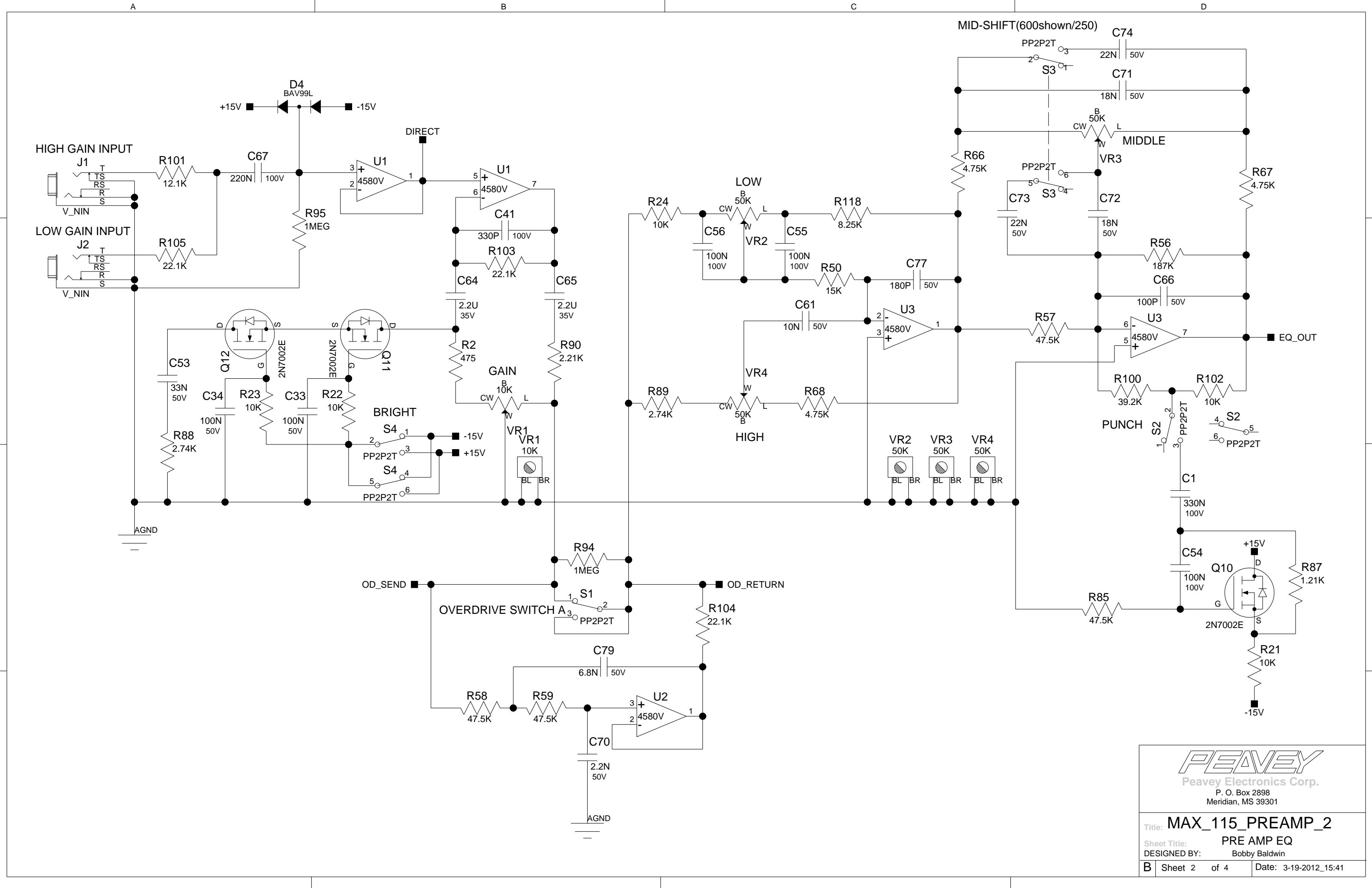
Note: All thru hole Resistors are 1/4 Watt unless otherwise indicated.
 All SMT 1206 Resistors are 1/4 Watt.
 All SMT 0805 Resistors are 1/10 Watt.
 Note Capacitor Values are indicated as Follows:
 val P = pF (picoFarads) val * 10 exp-12
 val N = nF (nanoFarads) val * 10 exp-9 (1N=1000pF, 100N=0.1uF)
 val U = uF (microFarads) val * 10 exp-6

Company Proprietary Information

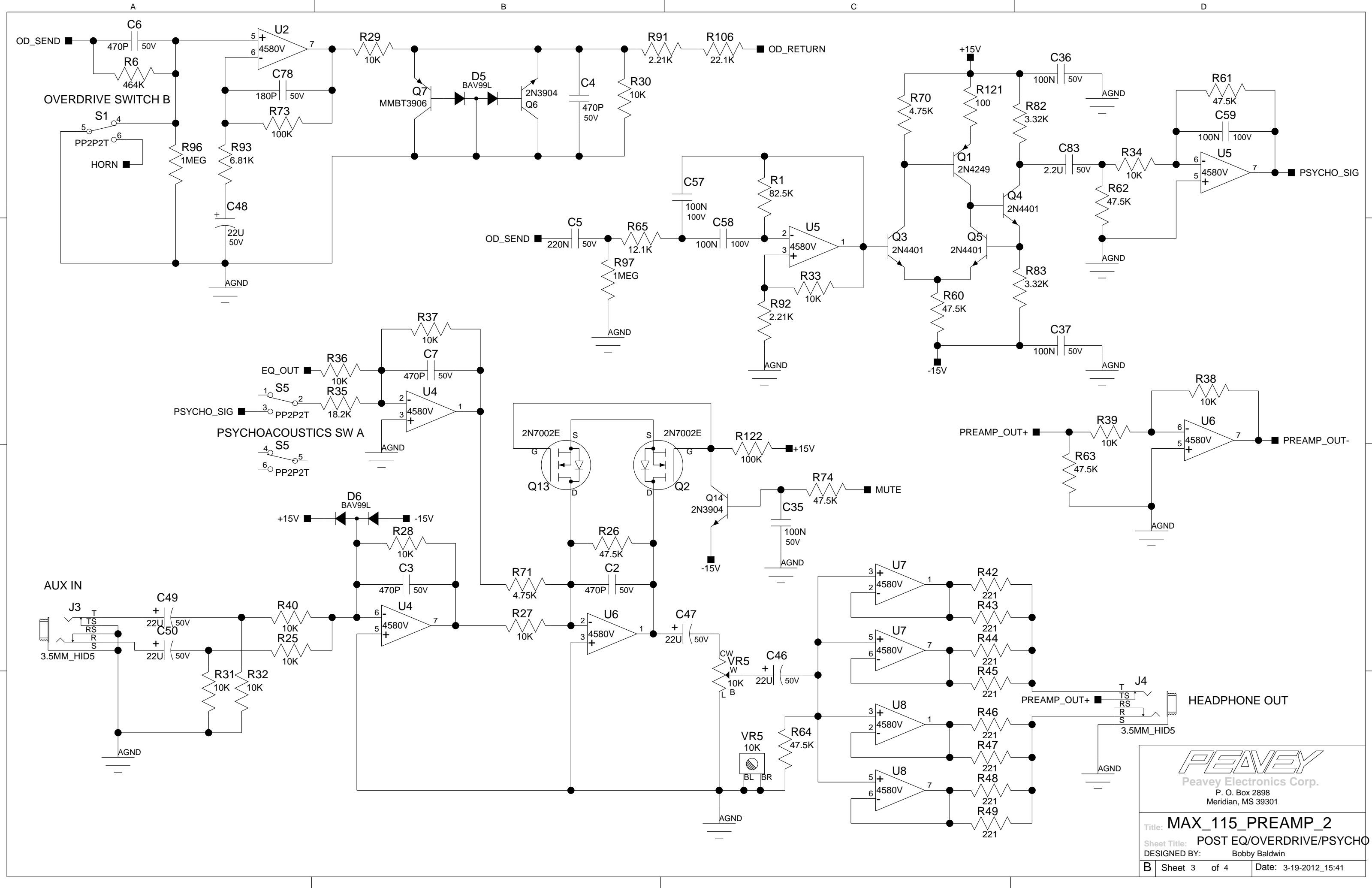
PEAVEY
 Peavey Electronics Corp.
 P. O. Box 2898
 Meridian, MS 39301

Product:
 Title: **MAX_115_PREAMP_2**
 Project Number:
 Eng: **RBB** Release Date:
 B Sheet 1 of 4 Saved: 3-19-2012_15:41

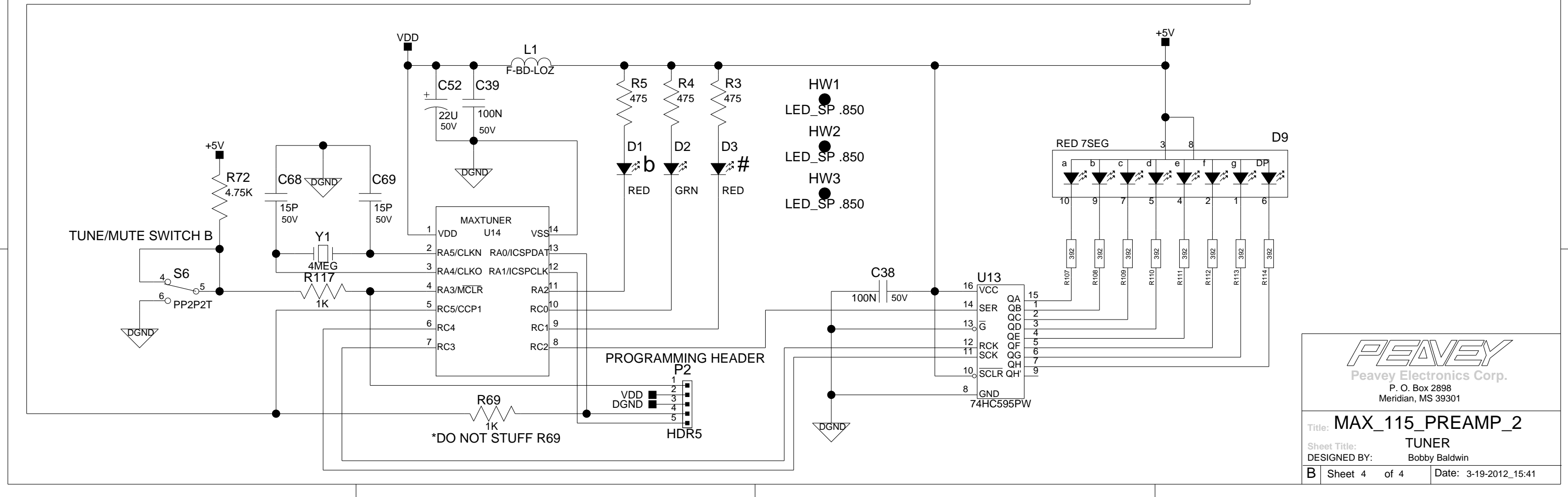
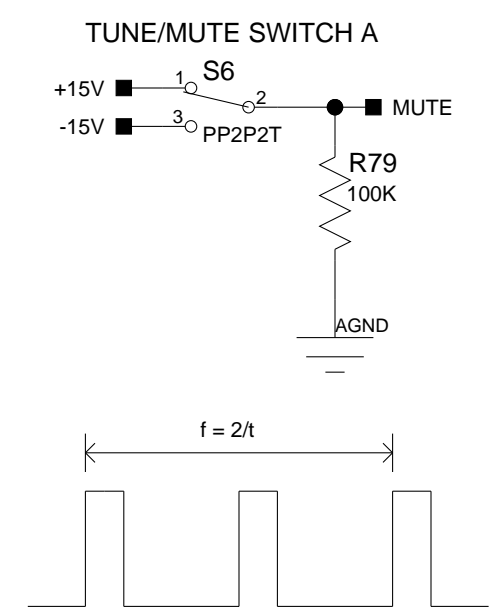
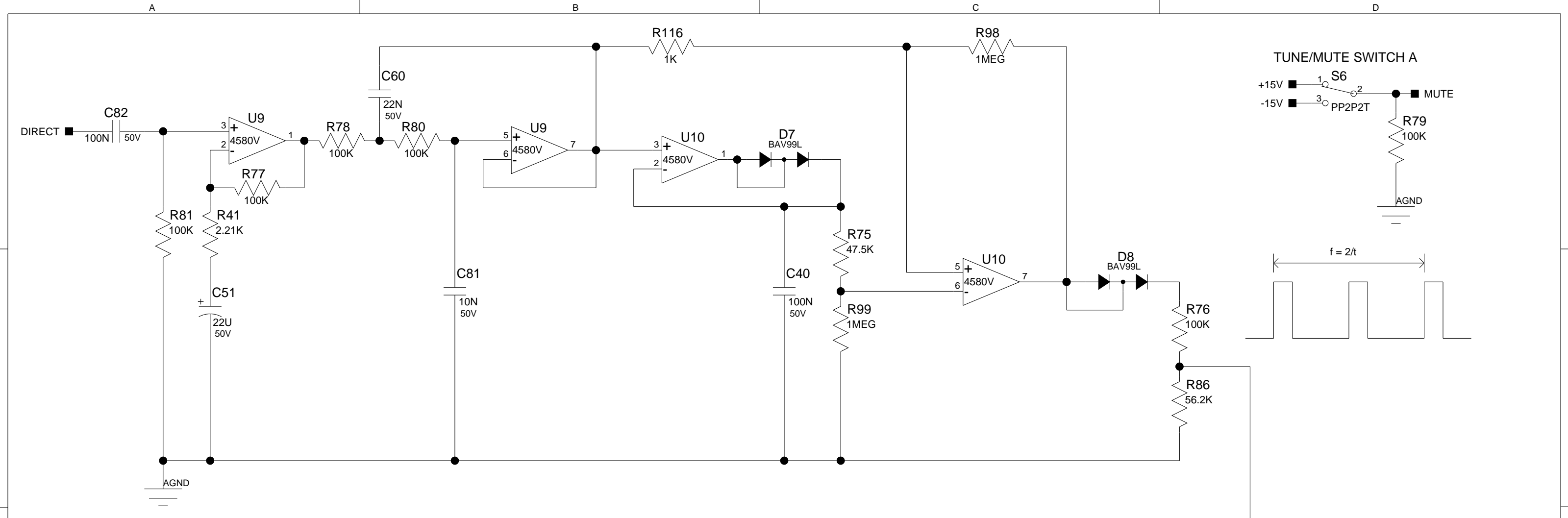
Patents:
 Copyright Peavey Electronics Corporation 2008.



Title: **MAX_115_PREAMP_2**
 SHEET TITLE: **PRE AMP EQ**
 DESIGNED BY: Bobby Baldwin
 B Sheet 2 of 4 Date: 3-19-2012_15:41



Title: **MAX_115_PREAMP_2**
 Sheet Title: **POST EQ/OVERDRIVE/PSYCHO**
 DESIGNED BY: Bobby Baldwin
 B Sheet 3 of 4 Date: 3-19-2012_15:41



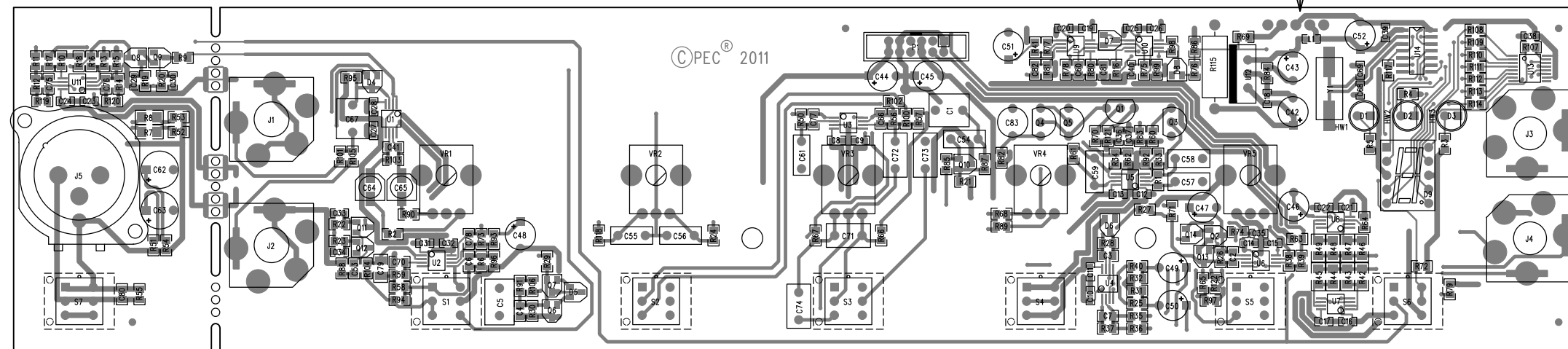
PEAVEY
Peavey Electronics Corp.
P. O. Box 2898
Meridian, MS 39301

Title: **MAX_115_PREAMP_2**
Sheet Title: **TUNER**
DESIGNED BY: Bobby Baldwin

B	Sheet 4 of 4	Date: 3-19-2012_15:41
---	--------------	-----------------------

MAX 112/115 PREAMP - PRIMARY SIDE VIEW

INSTALL P2 ON SECONDARY SIDE



FOR ASSEMBLY 32201782
DO NOT INSTALL
R69

BILL OF MATERIAL REPORT

REPORT DATE/TIME: 3/21/2012 11:19:41 AM

BOARD NAME: MAX 112/115 Preamp ASSEMBLY LEVEL NUMBER: 32201782

PROJECT NUMBER: P1000098 DESIGNER: FJE - 32101920

Qty.	Part #	Description	Reference Designators

2	30200060	100 1/4W 1% MF 1206	R7 R8
1	30200164	0.0 JUMPER SMT 0805	R84
31	30200174	10K 1/10W 1% MF 0805	R9 R10 R11 R12 R13 R14 R15 R16 R17 R18 R19 R20 R21 R22 R23 R24 R25 R27 R28 R29 R30 R31 R32 R33 R34 R36 R37 R38 R39 R40 R102
3	30200181	100 1/10W 1% MF 0805	R119 R120 R121
8	30200184	392 1/10W 1% MF 0805	R107 R108 R109 R110 R111 R112 R113 R114
2	30200188	1.00K 1/10W 1% MF 0805	R116 R117
8	30200194	100K 1/10W 1% MF 0805	R73 R76 R77 R78 R79 R80 R81 R122
6	30200195	1.00M 1/10W 1% MF 0805	R94 R95 R96 R97 R98 R99
1	30200200	8.25K 1/10W 1% MF 0805	R118
2	30200202	3.32K 1/10W 1% MF 0805	R82 R83
17	30200205	47.5K 1/10W 1% MF 0805	R26 R51 R52 R53 R54 R55 R57 R58 R59 R60 R61 R62 R63 R64 R74 R75 R85
8	30200220	221 1/4W 1% MF 1206	R42 R43 R44 R45

				R46 R47 R48 R49
1	30200244	187K	1/10W 1% MF 0805	R56
2	30200248	2.74K	1/10W 1% MF 0805	R88 R89
6	30200251	4.75K	1/10W 1% MF 0805	R66 R67 R68 R70 R71 R72
4	30200256	22.1K	1/10W 1% MF 0805	R103 R104 R105 R106
1	30200259	39.2K	1/10W 1% MF 0805	R100
1	30200266	18.2K	1/10W 1% MF 0805	R35
4	30200267	2.21K	1/10W 1% MF 0805	R41 R90 R91 R92
1	30200328	6.81K	1/10W 1% MF 0805	R93
1	30200334	15.0K	1/10W 1% MF 0805	R50
1	30200337	82.5K	1/10W 1% MF 0805	R1
4	30200356	475	1/10W 1% MF 0805	R2 R3 R4 R5
2	30200376	12.1K	1/10W 1% MF 0805	R65 R101
1	30200393	56.2K	1/10W 1% MF 0805	R86
1	30200417	464K	1/10W 1% MF 0805	R6
1	30200438	1.21K	1/10W 1% MF 0805	R87
1	30210003	100	1W 5% MO AXL	R115
2	30300084	2.2UF	35V 20% ELN SMT4	C64 C65
1	30300088	100PF	50V 5% NPO 0805	C66
5	30300090	470PF	50V 5% NPO 0805	C2 C3 C4 C6 C7
2	30300116	0.01UF	50V 5% X7R 0805	C80 C81
1	30300121	0.1UF	50V 5% X7R 0805	C82
33	30300128	0.1UF	50V □20% Y5V 0603	C8 C9 C10 C11 C12 C13 C14 C15 C16 C17 C18 C19 C20 C21 C22 C23

						C24 C25 C26 C27 C28 C29 C30 C31 C32 C33 C34 C35 C36 C37 C38 C39 C40
1	30300148	0.022UF	50V	5%	X7R 0805	C60
1	30300153	2200PF	50V	10%	NPO 0805	C70
1	30300155	0.033UF	50V	5%	X7R 0805	C53
4	30300169	180PF	50V	5%	NPO 0805	C75 C76 C77 C78
1	30300170	330PF	100V	5%	NPO 0805	C41
1	30300192	6800PF	50V	5%	PPS 1206	C79
2	30300210	15PF	50V	5%	COG 0603	C68 C69
11	30320181	22UF	50V	20%	EL RAD	C42 C43 C44 C45 C46 C47 C48 C49 C50 C51 C52
2	30320182	47UF	50V	20%	EL RAD	C62 C63
1	30320184	2.2UF	50V	20%	ELN RAD	C83
6	30330113	0.1UF	100V	10%	PPS RAD	C54 C55 C56 C57 C58 C59
1	30330114	0.22UF	100V	5%	PES RAD	C67
2	30330126	0.018UF	50V	5%	PE RAD	C71 C72
1	30330128	0.22UF	50V	5%	PE RAD	C5
2	30330134	0.022UF	50V	5%	PE RAD	C73 C74
1	30330146	0.33UF	100V	5%	PES RAD	C1
1	30330155	0.01UF	50V	5%	PE RAD	C61
1	30400322	7805F	INSUL	TO-220F		U12
2	30418135	2N3904	NPN	SOT23		Q6 Q14
7	30418369	2N7002E	N CH	60V MOSFET		Q2 Q8 Q9 Q10 Q11 Q12 Q13
1	30418421	MMBT3906	PNP	SOT23		Q7
1	30418588	74HC595PW	8-TRI	SHIFT REG SMT		U13

5	30418655	BAV99L DUAL 4148 DIODE SO	D4 D5 D6 D7 D8
11	30418836	NJM4580 DUAL OPAMP SSOP8	U1 U2 U3 U4 U5 U6 U7 U8 U9 U10 U11
2	30450034	RED LED T1 BULK	D1 D3
1	30450035	GRN LED T-1 BULK	D2
1	30450881	RED 7 SEGMENT LED DSPL 0.39"	D9
3	30463919	2N4401 NPN TO92 RAD	Q3 Q4 Q5
1	30464249	2N4249 30V TO-92 PNP RAD	Q1
1	30468201	MAX TUNER PIC, SOIC14	U14
1	30500922	FERRITE CHIP SMT 10OHM 100MHZ	L1
1	30810013	CRYSTAL 4.0MHZ SMT	Y1
3	30900793	LED SPACER .850"	HW1 HW2 HW3
2	31190258	10KB SNGL 9MM VER	VR1 VR5
3	31190259	50KB SNGL 9MM DET VER	VR2 VR3 VR4
7	31322251	SWITCH DPDT PP 3.3MM PC V	S1 S2 S3 S4 S5 S6 S7
2	31466217	STEREO HID JACK NINS W/SPD	J1 J2
1	31466553	MXLR A-SER VERT PIN4 SHELL	J5
2	31466603	JACK, 3.5MM PHONE TRS-SW HI-D	J3 J4
1	33717352	5 HDR V SR 0.100" TIN	P2
1	33717360	12 HDR V DR 2MM GOLD	P1

 END OF BILL OF MATERIAL REPORT
