

Service Manual



EUROLIVE B415DSP

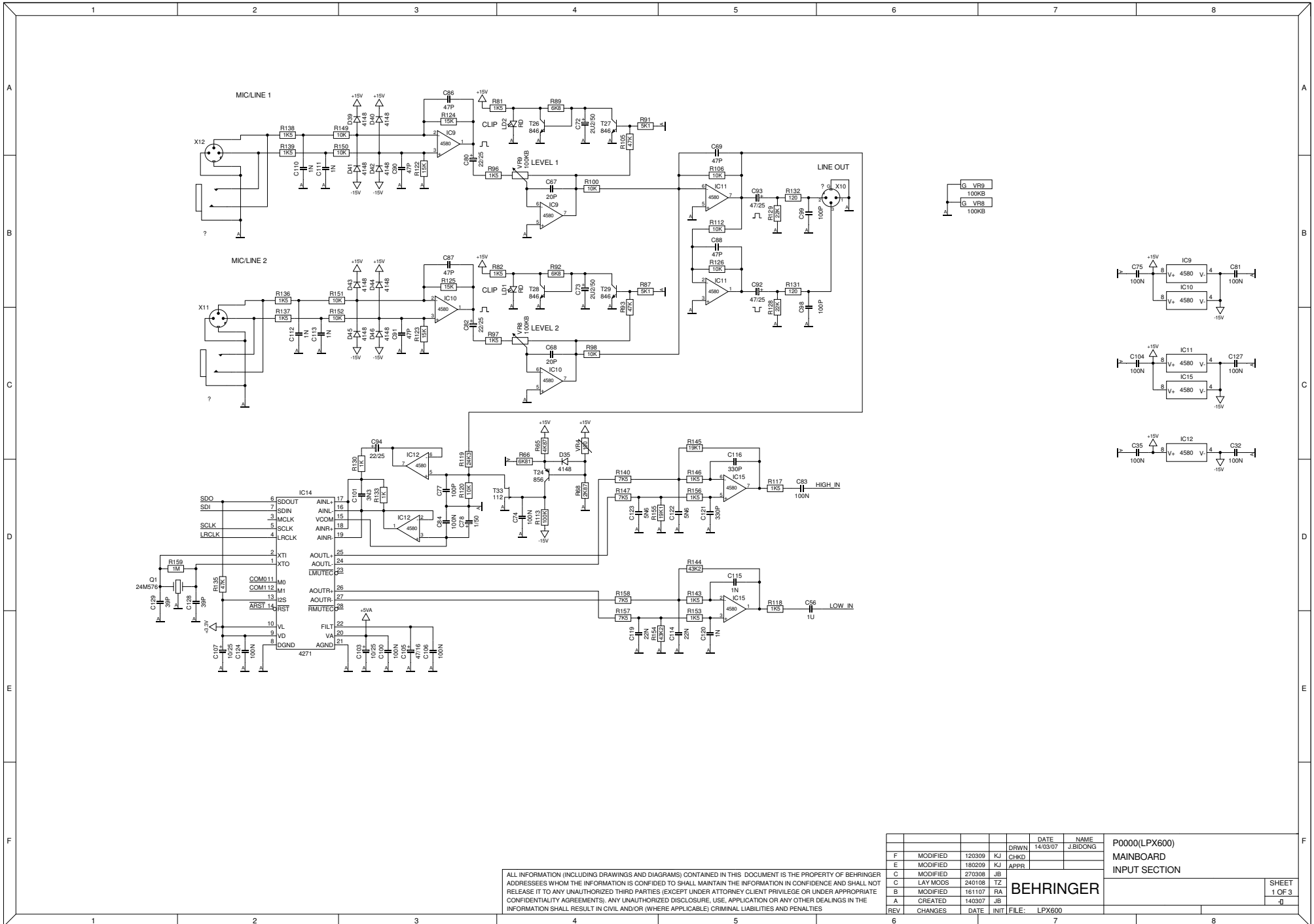
Digital Processor-Controlled 600-Watt 15" PA Speaker System with Integrated Mixer

Specifications	2
PCB Schematic	3
Parts List	11

EUROLIVE B415DSP

Specifications

- High-power 600-Watt 2-way PA sound reinforcement speaker system with integrated mixer for live and playback applications
- State-of-the-art 24-bit digital signal processor for ultimate system control:
- Digital crossover, phase and time correction for perfect driver alignment plus dual compressor/limiter for total system protection
- Digital Noise gate, Low-cut filter, 2-band EQ, dynamic Contour filter for ultimate sound reproduction
- 2 ULN Mic/Line inputs with individual Volume controls and Peak LEDs
- Extremely powerful 15" long-excursion driver provides incredibly deep bass and acoustic power
- State-of-the-art 1.75" titanium-diaphragm compression driver for exceptional high-frequency reproduction
- Ultra-wide dispersion and large format exponential/conical horn with multi-cell aperture throat
- Additional Line output enables linking of additional speaker systems
- Versatile trapezoidal enclosure design allows different positioning:
- Stand mounting with 35-mm pole socket
- Tilts on its side for use as a floor monitor
- Ergonomically shaped handles for easy carrying and setup
- High-quality components and exceptionally rugged construction ensure long life
- Conceived and designed by BEHRINGER Germany

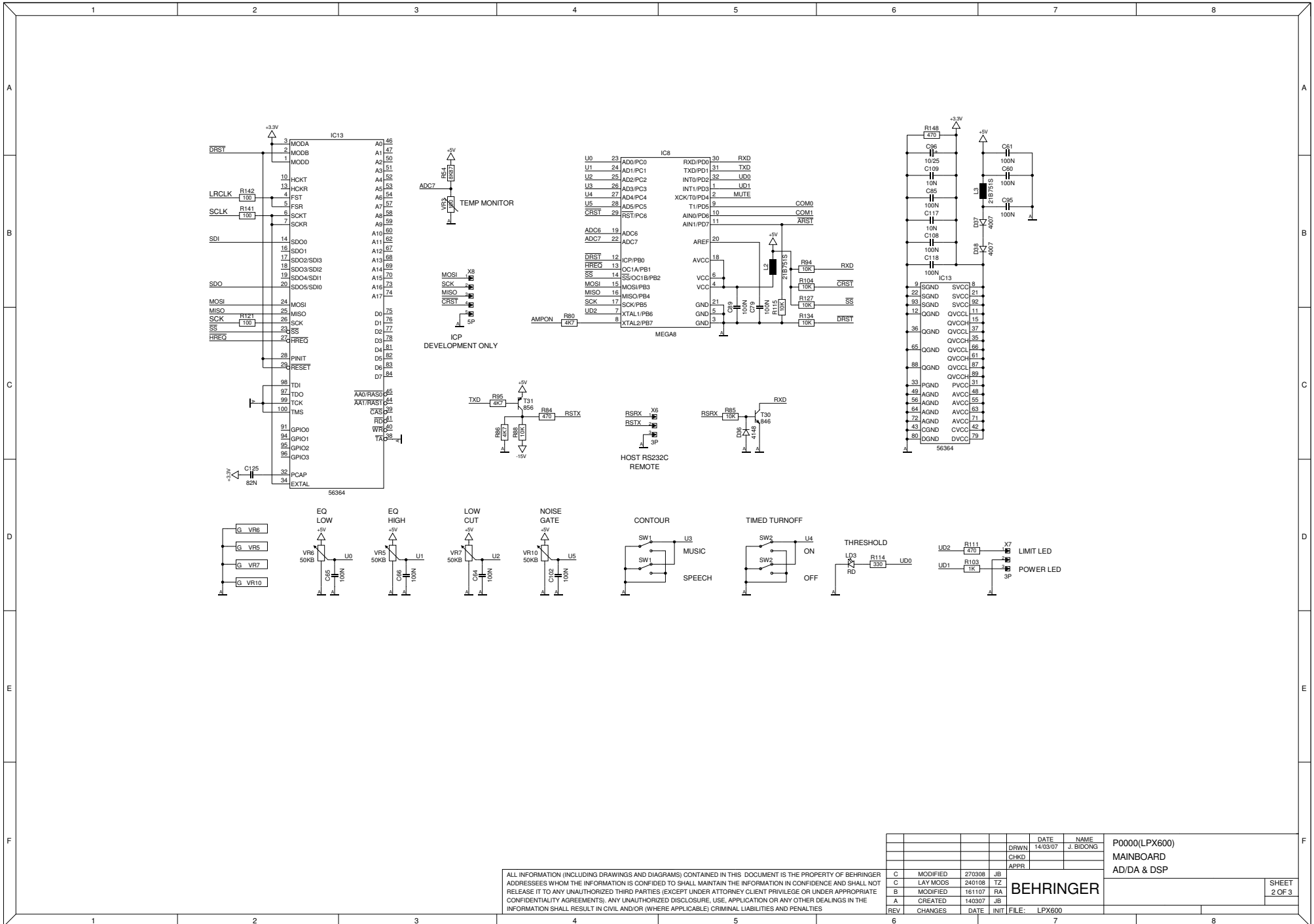


ALL INFORMATION (INCLUDING DRAWINGS AND DIAGRAMS) CONTAINED IN THIS DOCUMENT IS THE PROPERTY OF BEHRINGER ADDRESSES WHOM THE INFORMATION IS CONFIDED TO SHALL MAINTAIN THE INFORMATION IN CONFIDENCE AND SHALL NOT RELEASE IT TO ANY UNAUTHORIZED THIRD PARTIES (EXCEPT UNDER ATTORNEY CLIENT PRIVILEGE OR UNDER APPROPRIATE CONFIDENTIALITY AGREEMENTS). ANY UNAUTHORIZED DISCLOSURE, USE, APPLICATION OR ANY OTHER DEALINGS IN THE INFORMATION SHALL RESULT IN CIVIL AND/OR (WHERE APPLICABLE) CRIMINAL LIABILITIES AND PENALTIES

REV	CHANGES	DATE	INIT	FILE:	DATE	NAME	P0000(LPX600)
F	MODIFIED	120309	KJ	CHKD	14/03/07	J.BIDONG	MAINBOARD
E	MODIFIED	180209	KJ	APPR			INPUT SECTION
C	LAY MODS	240108	TZ				
B	MODIFIED	161107	RA				
A	CREATED	140307	JB				

BEHRINGER

SHEET 1 OF 3

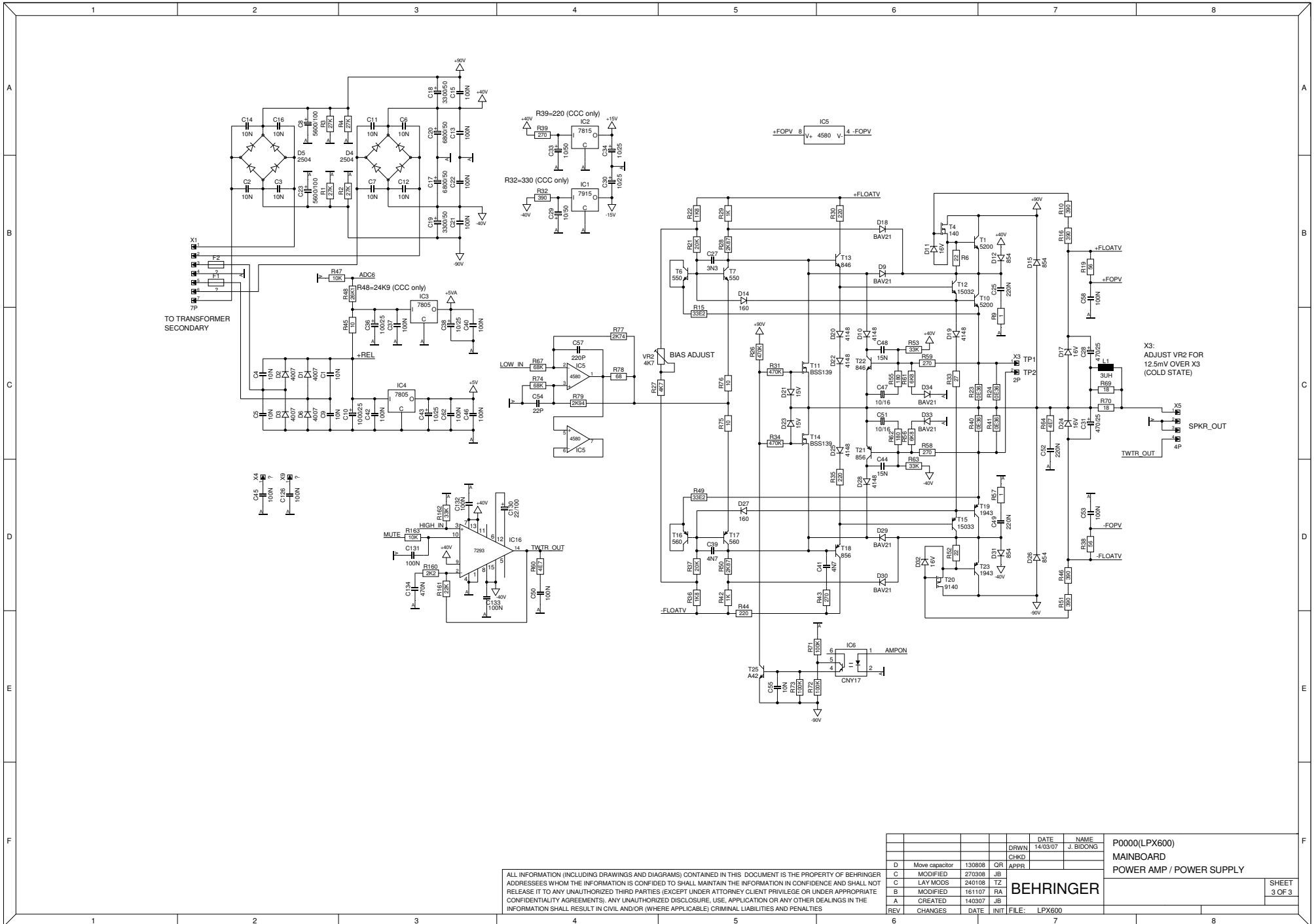


ALL INFORMATION (INCLUDING DRAWINGS AND DIAGRAMS) CONTAINED IN THIS DOCUMENT IS THE PROPERTY OF BEHRINGER ADDRESSEES WHOM THE INFORMATION IS CONFIDED TO SHALL MAINTAIN THE INFORMATION IN CONFIDENCE AND SHALL NOT RELEASE IT TO ANY UNAUTHORIZED THIRD PARTIES (EXCEPT UNDER ATTORNEY CLIENT PRIVILEGE OR UNDER APPROPRIATE CONFIDENTIALITY AGREEMENTS). ANY UNAUTHORIZED DISCLOSURE, USE, APPLICATION OR ANY OTHER DEALINGS IN THE INFORMATION SHALL RESULT IN CIVIL AND/OR (WHERE APPLICABLE) CRIMINAL LIABILITIES AND PENALTIES

DATE	14/03/07	NAME	J. BIDONG	P0000(LPX600) MAINBOARD AD/DA & DSP
DRWN		CHKD		
APPR				
REV	CHANGES	DATE	INIT	FILE: LPX600

BEHRINGER

SHEET 2 OF 3

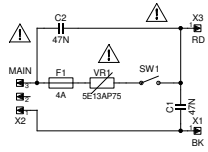


ALL INFORMATION (INCLUDING DRAWINGS AND DIAGRAMS) CONTAINED IN THIS DOCUMENT IS THE PROPERTY OF BEHRINGER ADDRESSEES WHOM THE INFORMATION IS CONFIDED TO SHALL MAINTAIN THE INFORMATION IN CONFIDENCE AND SHALL NOT RELEASE IT TO ANY UNAUTHORIZED THIRD PARTIES (EXCEPT UNDER ATTORNEY CLIENT PRIVILEGE OR UNDER APPROPRIATE CONFIDENTIALITY AGREEMENTS). ANY UNAUTHORIZED DISCLOSURE, USE, APPLICATION OR ANY OTHER DEALINGS IN THE INFORMATION SHALL RESULT IN CIVIL AND/OR (WHERE APPLICABLE) CRIMINAL LIABILITIES AND PENALTIES

REV	CHANGES	DATE	INIT	FILE:	DATE	NAME	P0000(LPX600) MAINBOARD POWER AMP / POWER SUPPLY
D	Move capacitor	130808	OR		14/03/07	J. BIDONG	
C	MODIFIED	270308	JB				
C	LAY MODS	240108	TZ				
B	MODIFIED	161107	RA				
A	CREATED	140307	JB				

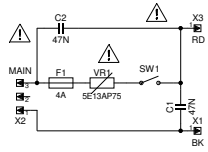
BEHRINGER

SHEET 3 OF 3



ALL INFORMATION (INCLUDING DRAWINGS AND DIAGRAMS) CONTAINED IN THIS DOCUMENT IS THE PROPERTY OF BEHRINGER ADDRESSEES WHOM THE INFORMATION IS CONFIDED TO SHALL MAINTAIN THE INFORMATION IN CONFIDENCE AND SHALL NOT RELEASE IT TO ANY UNAUTHORIZED THIRD PARTIES (EXCEPT UNDER ATTORNEY CLIENT PRIVILEGE OR UNDER APPROPRIATE CONFIDENTIALITY AGREEMENTS). ANY UNAUTHORIZED DISCLOSURE, USE, APPLICATION OR ANY OTHER DEALINGS IN THE INFORMATION SHALL RESULT IN CIVIL AND/OR (WHERE APPLICABLE) CRIMINAL LIABILITIES AND PENALTIES

			DATE	NAME	P0000(LPX600) PSU4 MAIN POWER SUPPLY	SHEET 1 OF 1
		DRWN	14/03/07	J.BIDONG		
		CHKD				
				APPR		
A	CREATED	140307	JB			
REV	CHANGES	DATE	INIT	FILE:	LPX600_PSU4	

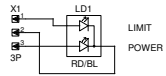


1	2	3	4	5	6	7	8
A							
B							
C							
D							
E							
F							

ALL INFORMATION (INCLUDING DRAWINGS AND DIAGRAMS) CONTAINED IN THIS DOCUMENT IS THE PROPERTY OF BEHRINGER ADDRESSEES WHOM THE INFORMATION IS CONFIDED TO SHALL MAINTAIN THE INFORMATION IN CONFIDENCE AND SHALL NOT RELEASE IT TO ANY UNAUTHORIZED THIRD PARTIES (EXCEPT UNDER ATTORNEY CLIENT PRIVILEGE OR UNDER APPROPRIATE CONFIDENTIALITY AGREEMENTS). ANY UNAUTHORIZED DISCLOSURE, USE, APPLICATION OR ANY OTHER DEALINGS IN THE INFORMATION SHALL RESULT IN CIVIL AND/OR (WHERE APPLICABLE) CRIMINAL LIABILITIES AND PENALTIES

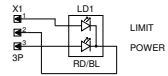
				DATE	NAME	P0000(LPX600) PSU4 MAIN POWER SUPPLY	SHEET 1 OF 1
			DRWN	14/03/07	J.BIDONG		
			CHKD				
A	CREATED	140307	JB				
REV	CHANGES	DATE	INIT	FILE:	LPX600_PSU4		

BEHRINGER



ALL INFORMATION (INCLUDING DRAWINGS AND DIAGRAMS) CONTAINED IN THIS DOCUMENT IS THE PROPERTY OF BEHRINGER ADDRESSEES WHOM THE INFORMATION IS CONFIDED TO SHALL MAINTAIN THE INFORMATION IN CONFIDENCE AND SHALL NOT RELEASE IT TO ANY UNAUTHORIZED THIRD PARTIES (EXCEPT UNDER ATTORNEY CLIENT PRIVILEGE OR UNDER APPROPRIATE CONFIDENTIALITY AGREEMENTS). ANY UNAUTHORIZED DISCLOSURE, USE, APPLICATION OR ANY OTHER DEALINGS IN THE INFORMATION SHALL RESULT IN CIVIL AND/OR (WHERE APPLICABLE) CRIMINAL LIABILITIES AND PENALTIES

			DATE	NAME	P0000(LPX600) LED POWER-ON LED
		DRWN	14/03/07	J. BIDONG	
		CHKD			
				APPR	
BEHRINGER					SHEET 1 OF 1
A	CREATED	140307	JB		0
REV	CHANGES	DATE	INIT	FILE: LPX600_LED	



1	2	3	4	5	6	7	8
A							A
B							B
C							C
D							D
E							E
F							F

ALL INFORMATION (INCLUDING DRAWINGS AND DIAGRAMS) CONTAINED IN THIS DOCUMENT IS THE PROPERTY OF BEHRINGER ADDRESSEES WHOM THE INFORMATION IS CONFIDED TO SHALL MAINTAIN THE INFORMATION IN CONFIDENCE AND SHALL NOT RELEASE IT TO ANY UNAUTHORIZED THIRD PARTIES (EXCEPT UNDER ATTORNEY CLIENT PRIVILEGE OR UNDER APPROPRIATE CONFIDENTIALITY AGREEMENTS). ANY UNAUTHORIZED DISCLOSURE, USE, APPLICATION OR ANY OTHER DEALINGS IN THE INFORMATION SHALL RESULT IN CIVIL AND/OR (WHERE APPLICABLE) CRIMINAL LIABILITIES AND PENALTIES

			DATE	NAME	P0000(LPX600) LED POWER-ON LED
		DRWN	14/03/07	J. BIDONG	
		CHKD			
				APPR	
A	CREATED	140307	JB	BEHRINGER	
REV	CHANGES	DATE	INIT		
					SHEET 1 OF 1
					1

Pcbs

	Quantity	Unit	Item	Rev	Description	Reference Designators	Notes
1	1.0000	PC	G42-00000-22270		PCB;4 LAYER;FR-4;LPX600;PCB:01;MAIN-AMP;REV:F;NO.902070;PCB AUTO INSERT	[LPX600:01: {1.0}]	
2	1.0000	PC	G42-00002-03025		PCB;4 LAYER;FR-4;LPX600;PCB:02;PSU4;REV:A;NO.715030	[00002: {1.0}]	
3	1.0000	PC	G42-00003-03026		PCB;4 LAYER;FR-4;LPX600;PCB:03;LED;REV:A;NO.716030	[00003: {1.0}]	

Cable

	Quantity	Unit	Item	Rev	Description	Reference Designators	Notes
1	1.0000	PC	A77-07027-92208		CABLE;STRANDWIRE;LENGTH:70mm;ZEE;AWG:18;UL1015;STRIP-TIN/LUG 4mm3;S/T LENGTH:7mm;COLOR:YEL/GRN		
2	1.0000	PC	A81-65030-36822		WIRE HARNES;LENGTH:650mm;AWG:26;P:2mm;ZEE;HOUSING - 5mm STRIP/TIN;POLES:3;PIN1 RED/OTHERS BLK	[LPX600:03: {1.0}]	
3	1.0000	PC	A88-60019-06540		CABLE;SPEAKER;P0285;S5001-04 + (2xAMP6.35S+600mm AWG16 UL1007+YELLOW/BLUE TWISTED;2xAMP6.35A+600mm AWG18 UL1007+BLACK/RED TWISTED);ZEE		
4	1.0000	PC	A76-15042-05624		CABLE;AC-CORD;W/POLYBAG;LENGTH:150cm;H05VV-F3G0.75MM2;VERSION;UK;SPEC.NO:05624		(UK)
5	1.0000	PC	A76-15062-45714		CABLE;AC-CORD;W/POLYBAG;LENGTH:150cm;POLES:3;APPROVAL:CCC;HC103 + 227 IEC 53 (RVV) 3x0.75mm2 + HE109B		(CCC)
6	1.0000	PC	A76-15222-06417		CABLE;AC-CORD;W/POLYBAG;LENGTH:152cm;AWG:18;VERSION;UL;SPEC.NO:06417		(UL)
7	1.0000	PC	A76-15032-55649		CABLE;AC-CORD;CLASS II;W/POLYBAG;JAPAN;LENGTH:150cm;POLES:3;APPROVAL:PSE;JS1553 + VCTF 3x0.75mm2 + V1528		(JP)
8	1.0000	PC	A76-18050-47490		CABLE;AC-CORD;LENGTH:180cm;VERSION:SAA;PLUG:HE105 ISOLATED;SAA H05VV-F 3x0.75mm2;CONN.HP-3;SPEC.NO:47490		(SAA)
9	1.0000	PC	A76-15212-03119		CABLE;AC-CORD;W/POLYBAG;LENGTH:152cm;H05VV-F 3G 0.75MM2;VERSION;EU;SPEC.NO:03119		(EU)
10	1.0000	PC	A76-00000-05305		CABLE;AC-CORD;3;BR;1500 MM;Plug + Connector:375+730;H05VV-F 3G0.75		(BR)

Circuit Protector

	Quantity	Unit	Item	Rev	Description	Reference Designators	Notes
1	6.0000	PC	B21-15201-52000		FUSE CLIP;2 A;V;ZINC PLATING;250V;SERIES;520;FUSE;250 V;PLATING	[LPX600:01: {4.0}] [LPX600:02: {2.0}]	
2	2.0000	PC	B22-01512-63001		FUSE;630mA;250V;SLOW BLOW;H-TYPE;5mm x 20mm	[LPX600:01: {2.0}(F1-F2)]	
3	1.0000	PC	B22-01516-30001		FUSE;6A3;250V;SLOW BLOW;H-TYPE;5mm x 20mm	[LPX600:02: {1.0}]	(UL, JP)
4	1.0000	PC	B22-01514-00001		FUSE;4A;250V;SLOW BLOW;H-TYPE;5mm x 20mm	[LPX600:02: {1.0}]	(EU, UK, SAA, CCC, BR)

Coil

	Quantity	Unit	Item	Rev	Description	Reference Designators	Notes
1	1.0000	PC	B30-03002-23144		COIL;AIR RADIAL;3uH;PITCH:10mm;AWG13	[LPX600:01: {1.0}(L1)]	
2	2.0000	PC	B39-00000-03394		COIL;SMD;BEAD;SMD0805;(BLM21BD751SN1D)	[LPX600:01: {2.0}(L2-L3)]	

Connector

	Quantity	Unit	Item	Rev	Description	Reference Designators	Notes
1	2.0000	PC	B84-39000-03120		CONNECTOR;AMP;PCB;PCB MOUNT;PITCH:5mm;WIDTH:6mm3	[LPX600:02: {2.0}(X1, X3)]	AMP6_3
2	1.0000	PC	B95-19320-01176		CONNECTOR;XLR;PLUG;MALE;STRAIGHT;POLES:3;NO:6;(CHUNSHENG CT3-03HMD-EP)	[LPX600:01: {1.0}(X10)]	
3	2.0000	PC	B95-19330-05149		CONN;XLR;POLES:3;COMBO JACK;FEMALE;STRAIGHT;NO:10;(ZHENHUA DY/CK-001H/EP)	[LPX600:01: {2.0}(X11-X12)]	

Diode

	Quantity	Unit	Item	Rev	Description	Reference Designators	Notes
1	6.0000	PC	C11-02030-02143		DIODE;BAV21;DO35;TEMIC OR FC	[LPX600:01: {6.0}(D9, D18, D29-D30, D33-D34)]	
2	6.0000	PC	C11-03014-00700		DIODE;1N4007;DO41	[LPX600:01: {6.0}(D1-D3, D6, D37-D38)]	
3	16.0000	PC	C11-09014-14802		DIODE;LL4148;LL34;TEMIC OR FC	[LPX600:01: {16.0}(D10, D19-D20, D22, D25, D28, D35-D36, D39-D46)]	
4	4.0000	PC	C12-03300-16043		DIODE;ZD16V0;BZX85C16;DO41	[LPX600:01: {4.0}(D11, D17, D24, D32)]	
5	2.0000	PC	C12-14200-15003		DIODE;ZMM15V0;SMD1206	[LPX600:01: {2.0}(D21, D23)]	
6	2.0000	PC	C13-03140-16002		DIODE;MBR160;DO41	[LPX600:01: {2.0}(D14, D27)]	
7	4.0000	PC	C13-23250-85452		DIODE;ULTRAFAST RECTIFIER;MR854;ON-SEMI	[LPX600:01: {4.0}(D12, D15, D26, D31)]	(EU, UL, JP, UK, SAA, CCC, BR)
8	4.0000	PC	C13-23250-85452		DIODE;ULTRAFAST RECTIFIER;MR854;ON-SEMI	[LPX600:01: {4.0}(D12, D15, D26, D31)]	

Hardware

	Quantity	Unit	Item	Rev	Description	Reference Designators	Notes
1	1.0000	PC	F85-04000-44001		HEX. NUT;INNER DIA;M4mm;SURFACE:ZINC		
2	1.0000	PC	F87-00000-09364		RUBBER;BLACK;HARDNESS 30		
3	1.0000	PC	F87-00100-07192		MULTICELL GASKET;P0157;DST.NO:001;DPT.NO:07192;(P0157-MULTICELL_GASKET-REVA.DWG)		SEAL BETWEEN MULTICELL ADAPTER & FRONT CABINET
4	3.0000	PC	F87-00400-10905		RUBBER FOOT;ROUND;COLOR:BLACK;OUTER DIA:29mm3;DST.NO:4;DPT.NO:10905;(P0157-RUBBERFOOT-REVD.DWG)		RUBBER FOOTING
5	2.0000	PC	F88-30060-30297		SCREW;M3mm*6mm;HEAD:PAN;INSERT:PHILLIPS REC.;SURFACE:BLACK/ZINC	[LPX600:01: {2.0}]	
6	1.0000	PC	F88-30080-30217		SCREW;A3mm*8mm;HEAD:PAN;INSERT:PHILIPS REC.;SURFACE:BLACK/ZINC		LED ASSEMBLY SCREW
7	6.0000	PC	F88-30080-30247		SCREW;BT3mm*8mm;HEAD:PAN;INSERT:PHILLIPS REC.;SURFACE:BLACK/ZINC		
8	12.0000	PC	F88-30100-30297		SCREW;M3mm*10mm;HEAD:PAN;INSERT:PHILIPS REC.;SURFACE:BLACK/ZINC	[LPX600:01: {8.0}]	AC RECEPTACLE TO PCB MOUNTING SCREW
9	8.0000	PC	F88-30120-30297		SCREW;M3mm*12mm;HEAD:PAN;INSERT:PHILIPS REC.;SURFACE:BLACK/ZINC	[LPX600:01: {8.0}]	
10	6.0000	PC	F88-30130-20247		SCREW;BT3mm*13mm;HEAD:BINDING;INSERT:PHILIPS REC.;SURFACE:BLACK/ZINC		MULTICELL ADAPTER BINDING SCREW
11	6.0000	PC	F88-40100-30297		SCREW;M4mm*10mm;HEAD:PAN;INSERT:PHILIPS REC.;SURFACE:BLACK/ZINC		
12	4.0000	PC	F88-40120-30297		SCREW;M4mm*12mm;HEAD:PAN;INSERT:PHILIPS REC.;SURFACE:BLACK/ZINC		
13	8.0000	PC	F88-50220-30297		SCREW;M5mm*22mm;HEAD:PAN;INSERT:PHILIPS REC.;SURFACE:BLACK/ZINC		WOOFER SCREW
14	4.0000	PC	F88-60120-30297		SCREW;M6mm*12mm;HEAD:PAN;INSERT:PHILIPS REC.;SURFACE:BLACK/ZINC		TWEETER AND MULTICELL ADAPTER BINDING SCREW
15	1.0000	PC	F88-60650-30297		SCREW;M6mm*65mm;HEAD:PAN;INSERT:PHILIPS REC.;SURFACE:BLACK/ZINC		
16	1.0000	PC	F91-02030-05793		SILICA GEL;MASS;30g;SPEC.NO:30QB-BB2001-4		
17	28.0000	PC	F96-10300-60053		WASHER;PLAIN;INNER DIA:3mm;OUTER DIA:6mm;THICKNESS:0mm5;CR(III)	[LPX600:01: {18.0}]	AC RECEPTACLE TO PCB MOUNTING SCREW WASHER
18	22.0000	PC	F96-40300-60053		WASHER;EXTERNAL TEETH;INNER DIA:3mm;OUTER DIA:6mm;THICKNESS:0mm5;PLATING:CR(III)	[LPX600:01: {18.0}]	
19	1.0000	PC	F97-00100-10745		PLASTIC;MYLAR;P0157;DST.NO:001;DPT.NO:10745;(P0157-MYLAR-REVA.DWG)		PCB SHIELDING
20	1.0000	PC	F97-00100-11598		INSULATION SHEET;GLIMMER;48mm0 x	[LPX600:01: {1.0}]	

	Quantity	Unit	Item	Rev	Description	Reference Designators	Notes
					GLTO220_48X142_1-REVA.DWG)		
21	1.0000	PC	F97-00100-11599		INSULATION SHEET;GLIMMER;48mm0 x 142mm2;DST.NO:001;DPT.NO:11598(IN-GLTO220_48X142_2-REVA.DWG)	[LPX600:01: {1.0}]	
22	1.0000	PC	F97-00200-10910		PROTECT SHEET;P0658;MATERIAL:PC;DST.NO:002;DPT.NO:10910;(P0658-MULTICELL_1.5MM THK PCSHEET-REVB.DWG)		MULTICELL ADAPTER BRACKET DIVIDER
23	10.0000	PC	F97-00200-12506		PROTECT SHEET;P0658;MATERIAL:EVA 1.0;DST.NO:002;DPT.NO:12506;(P0658-MULTICELL_1.0MM_THK_EVA-REVB.DWG)		
24	6.0000	PC	F98-04400-27886		BUSHING;MINIATURE;NYLON;DWG.NO:27886;(R20-SC-PLA_NYLBUSHM3x1_4.DWG)	[LPX600:01: {6.0}]	
25	3.0000	PC	F88-40180-30217		SCREW;A4mm*18mm;HEAD:PAN;INSERT:PHILIPS REC.;SURFACE:BLACK/ZINC		(EU, UL, JP, UK, SAA, CCC, BR)
26	1.0000	PC	F96-40601-25100		WASHER;EXTERNAL TEETH;INNER DIA:6mm;OUTER DIA:12mm5;THICKNESS;1mm0		(EU, UL, JP, UK, SAA, CCC, BR)
27	1.0000	PC	F90-00500-10282		METAL;SHIELD;P0157;DST.NO:005;DPT.NO:10282;(P0157-METAL_SHIELD-REVE.dwf)		(EU, UL, JP, UK, SAA, BR)
28	2.0000	PC	F96-10601-58103		WASHER;PLAIN;INNER DIA.6mm;OUTER DIA.15mm8;THICKNESS.1mm;SURFACE:CR(III)		(EU, UL, JP, UK, SAA, CCC, BR)
29	7.0000	PC	F88-30080-20297		SCREW;M3mm*8mm;HEAD:BINDING;INSERT:PHILLIPS REC.;SURFACE:BLACK/ZINC		(EU, UL, JP, UK, SAA, CCC, BR)
30	2.0000	PC	F94-30177-30000		STUD;THREAD-DIA;3mm;LENGTH:17mm7;INT/INT		(EU, UL, JP, UK, SAA, CCC, BR)
31	4.0000	PC	F96-20641-18130		WASHER;SPRING;INNER DIA:6mm4;OUTER DIA:11mm8;THICKNESS;1mm3		(EU, UL, JP, UK, SAA, CCC, BR)
32	6.0000	PC	F85-06000-44001		HEX. NUT;INNER DIA;M6mm;SURFACE:ZINC		(EU, UL, JP, UK, SAA, CCC, BR)
33	0.7800	G	F84-03000-01090		SCREWLOCK;SPEC.NO:01090		(EU, UL, JP, UK, SAA, BR)
34	2.0000	PC	F96-40400-70170		WASHER;EXTERNAL TEETH;INNER DIA:4mm;OUTER DIA:7mm;THICKNESS;1mm7		(EU, UL, JP, UK, SAA, CCC, BR)
35	6.0000	PC	F96-20400-70170		WASHER;SPRING;INNER DIA:4mm;OUTER DIA:7mm;THICKNESS;1mm7		(EU, UL, JP, UK, SAA, CCC, BR)
36	3.0000	PC	F88-40180-30217		SCREW;A4mm*18mm;HEAD:PAN;INSERT:PHILIPS REC.;SURFACE:BLACK/ZINC		RUBBER FOOTING SCREW
37	6.0000	PC	F85-06000-44001		HEX. NUT;INNER DIA;M6mm;SURFACE:ZINC		
38	16.0000	PC	F88-50350-20217		SCREW;A5mm*35mm;HEAD:BINDING;INSERT:PHILIPS REC.;SURFACE:BLACK/ZINC		(EU, UL, JP, UK, SAA, CCC, BR)
39	6.0000	PC	F85-03000-44001		HEX.NUT;INNER DIA;M3mm;SURFACE:ZINC		(EU, UL, JP, UK, SAA, CCC, BR)
40	6.0000	PC	F85-03000-44001		HEX.NUT;INNER DIA;M3mm;SURFACE:ZINC		AC RECEPTACLE TO PCB MOUNTING SCREW NUT, AC RECEPTACLE TO

	Quantity	Unit	Item	Rev	Description	Reference Designators	Notes
							METAL PANEL NUT
41	7.0000	PC	F88-30080-20297		SCREW;M3mm*8mm;HEAD:BINDING;INSERT:PHILLIPS REC.;SURFACE:BLACK/ZINC		AC RECEPTACLE TO METAL PANEL SCREW
42	4.0000	PC	F88-30080-30297		SCREW;M3mm*8mm;HEAD:PAN;INSERT:PHILLIPS REC.;SURFACE:BLACK/ZINC		(EU, UL, JP, UK, SAA, CCC, BR)
43	2.0000	PC	F96-40400-70170		WASHER;EXTERNAL TEETH;INNER DIA:4mm;OUTER DIA:7mm;THICKNESS;1mm7		
44	2.0000	PC	F90-00500-10282		METAL;SHIELD;P0157;DST.NO:005;DPT.NO:10282;(P0157-METAL_SHIELD-REVE.dwf)		(CCC)
45	2.0000	PC	F94-30177-30000		STUD;THREAD-DIA;3mm;LENGTH:17mm7;INT/INT		
46	4.0000	PC	F88-30080-30297		SCREW;M3mm*8mm;HEAD:PAN;INSERT:PHILLIPS REC.;SURFACE:BLACK/ZINC		MOUNTING STUD SCREW
47	0.0300	M	F95-04000-01098		SHRINKING TUBE;INNER DIA;4mm;SPEC.NO:01098	[LPX600:02: {0.03}]	(CCC)
48	4.0000	G	F84-01800-09286		THERM-GREASE;COLOR:WHT;SPEC.NO:09286		(EU, UL, JP, UK, SAA, BR)
49	0.0500	M	F95-04000-01098		SHRINKING TUBE;INNER DIA;4mm;SPEC.NO:01098	[LPX600:02: {0.03}]	(EU, UL, JP, UK, SAA, BR)
50	16.0000	PC	F88-50350-20217		SCREW;A5mm*35mm;HEAD:BINDING;INSERT:PHILIPS REC.;SURFACE:BLACK/ZINC		FRONT AND REAR ASSEMBLY FIXTURE
51	22.0000	PC	F88-40180-20217		SCREW;A4mm*18mm;HEAD:BINDING;INSERT:PHILIPS REC.;SURFACE:BLACK/ZINC		(EU, UL, JP, UK, SAA, CCC, BR)
52	4.0000	PC	F88-60220-30297		SCREW;M6mm*22mm;HEAD:PAN;INSERT:PHILLIPS REC.;SURFACE:BLACK/ZINC		(EU, UL, JP, UK, SAA, CCC, BR)
53	3.0000	PC	F83-04000-00021		CABLE TIE;NYLON;4in;COLOR:		(CCC)
54	22.0000	PC	F88-40180-20217		SCREW;A4mm*18mm;HEAD:BINDING;INSERT:PHILIPS REC.;SURFACE:BLACK/ZINC		REAR METAL PLATE SCREW, GRILL SCREW/MULTICELL ADAPTER SCREW
55	6.0000	PC	F96-20400-70170		WASHER;SPRING;INNER DIA:4mm;OUTER DIA:7mm;THICKNESS;1mm7		HEATSINK SCREW WASHER
56	4.0000	PC	F88-60220-30297		SCREW;M6mm*22mm;HEAD:PAN;INSERT:PHILLIPS REC.;SURFACE:BLACK/ZINC		
57	2.0000	PC	F96-10601-58103		WASHER;PLAIN;INNER DIA.6mm;OUTER DIA.15mm8;THICKNESS.1mm;SURFACE:CR(III)		
58	1.0000	PC	F96-40601-25100		WASHER;EXTERNAL TEETH;INNER DIA:6mm;OUTER DIA:12mm5;THICKNESS;1mm0		TRANSFORMER TEETH WASHER
59	4.0000	PC	F83-04000-00021		CABLE TIE;NYLON;4in;COLOR:		(EU, UL, JP, UK, SAA, BR)
60	4.0000	PC	F96-20641-18130		WASHER;SPRING;INNER DIA:6mm4;OUTER DIA:11mm8;THICKNESS;1mm3		HANDLE FIXTURE WASHER

Ic

	Quantity	Unit	Item	Rev	Description	Reference Designators	Notes
1	1.0000	PC	C61-95729-36315		IC;POWER-AMP;TDA7293HS;100W;MULTIWATT-15	[LPX600:01: {1.0}(IC16)]	
2	6.0000	PC	C73-00000-29050		IC;OPAMP;SMD;SOP;8;BA4580RF	[LPX600:01: {6.0}(IC5, IC9-IC12, IC15)]	
3	2.0000	PC	C77-05107-03010		IC;VOLT.REGULATOR;7805;TO220	[LPX600:01: {2.0}(IC3-IC4)]	
4	1.0000	PC	C77-15107-03010		IC;VOLT.REGULATOR;7815;TO220	[LPX600:01: {1.0}(IC2)]	
5	1.0000	PC	C77-15207-03015		IC;VOLT.REGULATOR;BRAND:ST MICROELECTRONICS;L7915;TO220	[LPX600:01: {1.0}(IC1)]	
6	1.0000	PC	D18-96636-41800		IC;DSP;56364;TQFP	[LPX600:01: {1.0}(IC13)]	
7	1.0000	PC	D24-18081-61832		IC;MICROCONTROLLER;ATMEGA8-16AC;TQFP32	[LPX600:01: {1.0}(IC8)]	
8	1.0000	PC	D28-54427-10628		IC;DIGITAL AUDIO;CS4271;AUDIO CODEC;TSSOP28	[LPX600:01: {1.0}(IC14)]	

Led

	Quantity	Unit	Item	Rev	Description	Reference Designators	Notes
1	1.0000	PC	E10-55570-01702		LED SUB;3mm ROUND;REFLECTOR:WATER CLEAR;(STRONG-BASE 33RB9SCA01)	[LPX600:03: {1.0}(LD1)]	LED_3P_CC
2	3.0000	PC	E12-57630-00590		LED;3mm ROUND;RD	[LPX600:01: {3.0}(LD1-LD3)]	

Manual

	Quantity	Unit	Item	Rev	Description	Reference Designators	Notes
1	1.0000	PC	A56-00000-69282		SERVICE INFORMATION SHEET;P0000;EN;REV:003		
2	1.0000	PC	A57-00003-12001		PRODUCT LEAFLET;FOR 2008 FULL LINE CATALOG		
3	1.0000	PC	A50-78832-00002		MANUAL;P0788;USER;JA;PAPER:70g;REV:002		(JP)
4	1.0000	PC	A50-78813-00002		MANUAL;P0788;USER;EN;PAPER:70g;REV:002		(EU, UL, UK, SAA, CCC, BR)
5	1.0000	PC	A50-78814-00002		MANUAL;P0788;USER;DE;PAPER:70g;REV:002		(EU, UL, UK, SAA, BR)
6	1.0000	PC	A50-78813-00002		MANUAL;P0788;USER;EN;PAPER:70g;REV:002		
7	1.0000	PC	A50-78813-00002		MANUAL;P0788;USER;EN;PAPER:70g;REV:002		
8	1.0000	PC	A50-78838-00003		MANUAL;P0788;USER;ZH;PAPER:70g;REV:003		(CCC)
9	1.0000	PC	A50-78821-00002		MANUAL;P0788;USER;EU;PAPER:70g;REV:002		(EU, UL, UK, SAA, BR)
10	1.0000	PC	A52-00000-40142		WARRANTY CARD;P0000;JA;DATE:01.07.2011;REVD		(JP)

Metal Part

	Quantity	Unit	Item	Rev	Description	Reference Designators	Notes
1	1.0000	PC	A63-00500-12353		METAL;BLOCK;P0157;ALU 6061;ANODIZING;HEATSINK;DST.NO:005;DPT.NO:12353;(P0157-TRANSISTOR_BLOCK-REVE.DWG)	[LPX600:01: {1.0}]	
2	1.0000	PC	A63-00600-12172		METAL;HEATSINK;P0157;DST.NO:006;DPT.NO:12172;(P0157-HEATSINK-REVF.DWG)		
3	1.0000	PC	A65-00000-49336		METAL;POAM1;SPCC 1.2mm;GRILL;BENDING + PUNCHING + STAMPING;SPRAYING;BLACK;SPEAKER GRILL;REVD		
4	1.0000	PC	A65-00100-04610		METAL;KNOB;P0157;STEEL;DST.NO:001;DPT.NO:04610;(P0157-KNOB_GUIDE-REVA.DWG)		(EU, UL, JP, UK, SAA, CCC, BR)
5	1.0000	PC	A65-00100-04610		METAL;KNOB;P0157;STEEL;DST.NO:001;DPT.NO:04610;(P0157-KNOB_GUIDE-REVA.DWG)		KNOB SHAFT BUSHING
6	1.0000	PC	J00-00300-14638		METAL;REAR PLATE;P0788;PRINTED;FST.NO:003;DPT.NO:14638;(P0157-REAR_METAL_PLATE-REVJ.DWG)		(EU, UL, JP, UK, SAA, BR)
7	1.0000	PC	J00-00300-11463		METAL;REAR PLATE;P0788;PRINTED;FST.NO:003;DPT.NO:11463;(P0157-REAR_METAL_PLATE-REVB.DWG)		(CCC)

Packaging Part

	Quantity	Unit	Item	Rev	Description	Reference Designators	Notes
1	1.0000	PC	G25-00200-10713		POLYFOAM;BOTTOM LEFT;I00363P;DST.NO:002;DPT.NO:10713;(I00363P-POLYFOAM_BOTTOM_LEFT-REVB.DWG)		
2	1.0000	PC	G25-00200-10714		POLYFOAM;BOTTOM RIGHT;I00364P;DST.NO:002;DPT.NO:10714;(I00364P-POLYFOAM_BOTTOM_RIGHT-REVB.DWG)		
3	1.0000	PC	G25-00200-10715		POLYFOAM;TOP LEFT;I00365P;DST.NO:002;DPT.NO:10715;(I00365P-POLYFOAM_TOP_LEFT-REVB.DWG)		
4	1.0000	PC	G25-00200-10716		POLYFOAM;TOP RIGHT;I00366P;DST.NO:002;DPT.NO:10716;(I00366P-POLYFOAM_TOP_RIGHT-REVB.DWG)		
5	1.0000	PC	G28-20090-14010		PE BAG;SIZE:9in*14in;W/WARNING		
6	1.0000	PC	G28-62001-60516		PE BAG;SIZE:20in+16in*54in;06 PE;W/WARNING		
7	1.0000	PC	I40-00100-10548		MASTER CARTON;P0778;PRINTED;FST.NO:001;DPT.NO:10548;(I0362P-MASTER_CARTON-REVA.DWG)		

Plastic Part

	Quantity	Unit	Item	Rev	Description	Reference Designators	Notes
1	2.0000	PC	G52-00500-11000		KNOB;SWITCH;UB-S;430C;DST.NO:005;DPT.NO:11000;(UB-S_SWKNOB-REVE.DWG)		
2	1.0000	PC	G52-80500-23660		PLASTIC;POWER SWITCH KNOB;PMX2000;DWG.NO:23660;(R20-PMX2000X-POWERKNOB-REVA.DWG)		POWER SWITCH
3	1.0000	PC	G56-00300-14828		PLASTIC;FRONT CABINET;P0788;DST.NO:003;DPT.NO:14828;(P0788-FRONT_CABINET-REVC.DWG)		
4	3.0000	PC	G58-00000-14422		PLASTIC;P0157;LED;BLACK;LED_SPACER;P0157-LED_SPACER_16MM-REVB.DWG	[LPX600:01: {3.0}]	
5	1.0000	PC	G58-00100-00913		PLASTIC;LOGO PLATE;I00418P;DST.NO:001;DPT.NO:00913;(I00418P-LOGO_PLATE-REVA.DWG)		
6	1180.0000	MM	G58-00100-03180		GASKET;SPEAKER;RGA15EVA1_5A;MATERIAL:EVA;BLACK;WIDTH:15mm;HEIGHT:1mm5;DST.NO:001;DPT.NO:03180;(LS-RGA15EVA1_5A-REVA.DWG)		
7	1.0000	PC	G58-00100-10744		PLASTIC;DRIVER GASKET;P0157;DST.NO:001;DPT.NO:10744;(P0157-DRIVER_GASKET-REVA.DWG)		
8	1.0000	PC	G58-00100-12803		GASKET;P0157;FRONT CABINET;2300mm;DST.NO:001;DPT.NO:12803;(P0157-FRONT_CABINET_GASKET-REVA.DWG)		
9	2.0000	PC	G58-00200-09892		PLASTIC;MULTICELL ADAPTER;P0157;DST.NO:002;DPT.NO:09892;(P0157-MULTICELL_ADAPTER-REVB.DWG)		MULTICELL ADAPTER BRACKET
10	1.0000	PC	G58-00300-10875		PLASTIC;LED SPACER;I00354P;DST.NO:003;DPT.NO:10875;(I00354P-LED_SPACER-REVC.DWG)	[00003: {1.0}]	
11	1.0000	PC	I63-00000-45313		PLASTIC;P0000;BEHLOGO12;68.38mm;A001		
12	1.0000	PC	I68-00100-05314		PLASTIC;LOGO;P0157;24-BIT;PET;PRINTED;FST.NO:001;DPT.NO:05314;(P0157-24BITLOGO-REVB.DWG)		
13	1.0000	PC	G52-00100-04631		PLASTIC;KNOB;P0157;YS1285B;BLACK;DST.NO:001;DPT.NO:04631;(P0157-KNOB-REVA.DWG)		(EU, UL, JP, UK, SAA, CCC, BR)
14	1.0000	PC	G56-00200-10747		PLASTIC;BACK CABINET;P0788;DST.NO:002;DPT.NO:10747;(P0788-BACK_CABINET-REVB.DWG)		(EU, UL, JP, UK, SAA, CCC, BR)
15	2.0000	PC	G52-00100-12537		KNOB;POT;I0003A;(10)04;ABS;430C;CAP:194C;DST.NO:001;DPT.NO:12537;(I0003A-POTI KNOB_10-REVA.DWG)		(EU, UL, JP, UK, SAA, CCC, BR)
16	2.0000	PC	G58-00200-10909		PLASTIC;HANDLE;P0658;ABS;MOULDING;YS2296A;BLACK;DST.NO:002;DPT.NO:10909;(B512DSP-HANDLE-REVB.DWG)		(EU, UL, JP, UK, SAA, CCC, BR)
17	1.0000	PC	G58-00200-02452		PLASTIC;INLET;ABS;PRO SERIES (POWER		(EU, UL, JP, UK, SAA,

	Quantity	Unit	Item	Rev	Description	Reference Designators	Notes
					SWITCH);SIZE:0in58*0in58;ABS;DST.NO:002;DPT.NO:02452;(PRO-PWRSWIT-REVB.DWG)		CCC, BR)
18	1.0000	PC	G56-00200-10747		PLASTIC;BACK CABINET;P0788;DST.NO:002;DPT.NO:10747;(P0788-BACK_CABINET-REVB.DWG)		
19	3.0000	PC	G52-00100-12538		KNOB;POT;I0003A;(10)04;ABS;430C;CAP:289C;DST.NO:001;DPT.NO:12538;(I0003A-POTI KNOB_10-REVA.DWG)		(EU, UL, JP, UK, SAA, CCC, BR)
20	1.0000	PC	G58-00200-02452		PLASTIC;INLET;ABS;PRO SERIES (POWER SWITCH);SIZE:0in58*0in58;ABS;DST.NO:002;DPT.NO:02452;(PRO-PWRSWIT-REVB.DWG)		
21	2.0000	PC	G58-00100-07217		PLASTIC;GASKET;P0157;EVA;CABINET;DST.NO:001;DPT.NO:07217;(P0157-METAL_PANEL_GASKET-REVA.DWG)		(CCC)
22	2.0000	PC	G58-00100-11148		PLASTIC;SWITCH SPACER;I00402P;DST.NO:001;DPT.NO:11148;(I00402P-SWITCH_SPACER-REVA.dwg)		(EU, UL, JP, UK, SAA, CCC, BR)
23	1.0000	PC	G52-00100-12539		KNOB;POT;I0003A;(10)04;ABS;430C;CAP:WHITE;DST.NO:001;DPT.NO:12539;(I0003A-POTI KNOB_10-REVA.DWG)		(EU, UL, JP, UK, SAA, CCC, BR)
24	2.0000	PC	G52-00100-12537		KNOB;POT;I0003A;(10)04;ABS;430C;CAP:194C;DST.NO:001;DPT.NO:12537;(I0003A-POTI KNOB_10-REVA.DWG)		
25	2.0000	PC	G58-00200-10909		PLASTIC;HANDLE;P0658;ABS;MOULDING;YS2296A;BLACK;DST.NO:002;DPT.NO:10909;(B512DSP-HANDLE-REVB.DWG)		HANDLE
26	1.0000	PC	G52-00100-12539		KNOB;POT;I0003A;(10)04;ABS;430C;CAP:WHITE;DST.NO:001;DPT.NO:12539;(I0003A-POTI KNOB_10-REVA.DWG)		
27	3.0000	PC	G52-00100-12538		KNOB;POT;I0003A;(10)04;ABS;430C;CAP:289C;DST.NO:001;DPT.NO:12538;(I0003A-POTI KNOB_10-REVA.DWG)		
28	1.0000	PC	G58-00100-07217		PLASTIC;GASKET;P0157;EVA;CABINET;DST.NO:001;DPT.NO:07217;(P0157-METAL_PANEL_GASKET-REVA.DWG)		(EU, UL, JP, UK, SAA, BR)
29	1.0000	PC	G52-00100-04631		PLASTIC;KNOB;P0157;YS1285B;BLACK;DST.NO:001;DPT.NO:04631;(P0157-KNOB-REVA.DWG)		KNOB
30	2.0000	PC	G58-00100-11148		PLASTIC;SWITCH SPACER;I00402P;DST.NO:001;DPT.NO:11148;(I00402P-SWITCH_SPACER-REVA.dwg)		SPACER FOR SWITCH

Plug Socket

	Quantity	Unit	Item	Rev	Description	Reference Designators	Notes
1	1.0000	PC	G67-30103-01811		SOCKET;AC;SNAP-IN;UL94V-0;10/15A 250VAC;PCB MOUNT;COLOR:BLK;POLES:03;(RONG-FENG SS-7B-1-T7)	[00002: {1.0}(X2)]	X_PEUROP
2	1.0000	PC	G71-15102-50445		PIN HEADER;POLES:2;STRAIGHT;PITCH:2.54 mm;1 ROW;1001-02-S	[LPX600:01: {1.0}(X3)]	
3	2.0000	PC	G71-23103-04757		WAFER;POLES:3;STRAIGHT;PITCH:2 mm;1 ROW;TYPE:A2006WV-3P	[LPX600:01: {2.0}(X6-X7)]	
4	1.0000	PC	G71-23105-04745		WAFER;POLES:5;STRAIGHT;PITCH:2 mm;1 ROW;TYPE:A2006WV-5P	[LPX600:01: {1.0}(X8)]	
5	1.0000	PC	G71-27104-04415		WAFER;POLES:4;STRAIGHT;PITCH:3.96 mm;1 ROW;JS1120-04	[LPX600:01: {1.0}(X5)]	
6	1.0000	PC	G71-27107-04763		WAFER;POLES:7;STRAIGHT;PITCH:3.96 mm;1 ROW;JS1120-07	[LPX600:01: {1.0}(X1)]	

Power Supply

	Quantity	Unit	Item	Rev	Description	Reference Designators	Notes
1	1.0000	PC	J68-90005-03152		TRAFO;TOROIDAL;LPX600;UL 120V;(NRE TR07-0012(R1L))		(UL)
2	1.0000	PC	J68-90007-03155		TRAFO;TOROIDAL;LPX600;JP 100V;(NRE TR07-0013(R1L))		(JP)
3	1.0000	PC	J68-90004-03154		TRAFO;TOROIDAL;LPX600;EU SAA UK 230V;(NRE TR07-0011(R1L))		(EU, UK, SAA, BR)
4	1.0000	PC	J68-90000-03156		TRAFO;TOROIDAL;LPX600;CCC 220V;(NRE TR07-0014(R1L))		(CCC)

Quarz

	Quantity	Unit	Item	Rev	Description	Reference Designators	Notes
1	1.0000	PC	H65-10400-24576		QUARZ;RESONATOR;24MHz576;HC49S FUNDAMENTAL	[LPX600:01: {1.0}(Q1)]	

Raw Material

	Quantity	Unit	Item	Rev	Description	Reference Designators	Notes
1	1.6000	G	E41-60116-04068		GLUE;SUN-DA;SILCONE;SW-116-A		(CCC)
2	0.4500	G	E41-50088-50456		HOTMELT;ZL;HS-88A		(EU, UL, JP, UK, SAA, BR)
3	2.5000	G	E41-60268-50457		GLUE;SUNYES;820		(EU, UL, JP, UK, SAA, BR)
4	0.0500	G	E41-60000-09832		GLUE;SPEC.NO:09832		(EU, UL, JP, UK, SAA, BR)

Potentiometer

	Quantity	Unit	Item	Rev	Description	Reference Designators	Notes
1	2.0000	PC	I03-85245-01974		POTENTIOMETER;50Kohm;TAPER:B;MONO;SHAFT:30M M;W/ CC;HIGH TORQUE;(TOPROOT RK093NVA01-F30B12-B50K(300)-CC-O-H)	[LPX600:01: {2.0}(VR5-VR6)]	
2	2.0000	PC	I03-87245-01776		POTENTIOMETER;50Kohm;TAPER:B;MONO;D-SHAFT:30MM;W/O CC;HIGH TORQUE;(TOPROOT RK093NVA01-F30B12-B50K(300)-O-H)	[LPX600:01: {2.0}(VR7, VR10)]	
3	2.0000	PC	I03-87251-01972		POTENTIOMETER;100Kohm;TAPER:B;MONO;SHAFT:30M M;W/O CC;HIGH TORQUE;(TOPROOT RK093NVA01-F30B12-B100K(300)-O-H)	[LPX600:01: {2.0}(VR8-VR9)]	

Speaker Part

	Quantity	Unit	Item	Rev	Description	Reference Designators	Notes
1	1.0000	PC	H71-60440-02660		TWEETER;P0900;1.75 in;120 W;8 ohm;44T120D8		
2	1.0000	PC	H77-61500-02713		WOOFER;P0905;15 in;1200 W;8 ohm;15W1200A8		

Switch

	Quantity	Unit	Item	Rev	Description	Reference Designators	Notes
1	1.0000	PC	I91-02412-22761		SWITCH;PUSH;1P2T;PCB VERSION;LOCKING;NONSHORT;WELL LONG;PS3-22SPA- P9DZ	[00002: {1.0}{SW1}]	(EU, UL, JP, UK, SAA, CCC, BR)
2	2.0000	PC	I77-03422-02778		SWITCH;RADIAL;2P2T;PCB VERSION;LOCKING;NONSHORT;RAD2P	[LPX600:01: {2.0}{SW1-SW2}]	(EU, UL, JP, UK, SAA, CCC, BR)
3	1.0000	PC	I91-02412-22761		SWITCH;PUSH;1P2T;PCB VERSION;LOCKING;NONSHORT;WELL LONG;PS3-22SPA- P9DZ	[00002: {1.0}{SW1}]	PS3_22SP
4	2.0000	PC	I77-03422-02778		SWITCH;RADIAL;2P2T;PCB VERSION;LOCKING;NONSHORT;RAD2P	[LPX600:01: {2.0}{SW1-SW2}]	

Transistor

	Quantity	Unit	Item	Rev	Description	Reference Designators	Notes
1	7.0000	PC	J73-02084-61703		TRANSISTOR;BC846B;SOT;SMD	[LPX600:01: {7.0}(T13, T22, T26-T30)]	
2	4.0000	PC	J73-02085-61703		TRANSISTOR;BC856B;SOT;SMD	[LPX600:01: {4.0}(T18, T21, T24, T31)]	
3	1.0000	PC	J73-08004-21703		TRANSISTOR;MBTA42;SOT	[LPX600:01: {1.0}(T25)]	
4	2.0000	PC	J73-18013-92803		TRANSISTOR;MOSFET;BSS139;SOT23	[LPX600:01: {2.0}(T11, T14)]	
5	1.0000	PC	J74-10011-31703		TRANSISTOR;SST113;SOT	[LPX600:01: {1.0}(T33)]	
6	1.0000	PC	J71-22503-20703		TRANSISTOR;MJE15032;TO220	[LPX600:01: {1.0}(T12)]	(EU, UL, JP, UK, SAA, CCC, BR)
7	2.0000	PC	J71-13194-33503		TRANSISTOR;2SA1943;FAIRCHILD(TO264) OR TOSHIBA(2-21F1A) ONLY	[LPX600:01: {2.0}(T19, T23)]	(EU, UL, JP, UK, SAA, CCC, BR)
8	1.0000	PC	J71-22503-20703		TRANSISTOR;MJE15032;TO220	[LPX600:01: {1.0}(T12)]	
9	1.0000	PC	J70-20014-03203		TRANSISTOR;IRFP140N;TO247	[LPX600:01: {1.0}(T4)]	(EU, UL, JP, UK, SAA, CCC, BR)
10	1.0000	PC	J71-22503-30703		TRANSISTOR;MJE15033;TO220	[LPX600:01: {1.0}(T15)]	(EU, UL, JP, UK, SAA, CCC, BR)
11	1.0000	PC	J70-20914-06003		TRANSISTOR;IRFP9140N;TO247AC	[LPX600:01: {1.0}(T20)]	(EU, UL, JP, UK, SAA, CCC, BR)
12	2.0000	PC	J73-46055-00803		TRANSISTOR;BC550;TO92	[LPX600:01: {2.0}(T6-T7)]	(EU, UL, JP, UK, SAA, CCC, BR)
13	2.0000	PC	J73-46055-00803		TRANSISTOR;BC550;TO92	[LPX600:01: {2.0}(T6-T7)]	
14	1.0000	PC	J71-22503-30703		TRANSISTOR;MJE15033;TO220	[LPX600:01: {1.0}(T15)]	
15	1.0000	PC	J70-20914-06003		TRANSISTOR;IRFP9140N;TO247AC	[LPX600:01: {1.0}(T20)]	
16	1.0000	PC	J70-20014-03203		TRANSISTOR;IRFP140N;TO247	[LPX600:01: {1.0}(T4)]	
17	2.0000	PC	J71-13194-33503		TRANSISTOR;2SA1943;FAIRCHILD(TO264) OR TOSHIBA(2-21F1A) ONLY	[LPX600:01: {2.0}(T19, T23)]	
18	2.0000	PC	J73-46056-00803		TRANSISTOR;BC560;TO92	[LPX600:01: {2.0}(T16-T17)]	(EU, UL, JP, UK, SAA, CCC, BR)
19	2.0000	PC	J71-15520-03503		TRANSISTOR;2SC5200;FAIRCHILD(TO264) OR TOSHIBA(2-21F1A) ONLY	[LPX600:01: {2.0}(T1, T10)]	(EU, UL, JP, UK, SAA, CCC, BR)
20	2.0000	PC	J73-46056-00803		TRANSISTOR;BC560;TO92	[LPX600:01: {2.0}(T16-T17)]	
21	2.0000	PC	J71-15520-03503		TRANSISTOR;2SC5200;FAIRCHILD(TO264) OR TOSHIBA(2-21F1A) ONLY	[LPX600:01: {2.0}(T1, T10)]	



We Hear You