


ASSEMBLY VERSION TABLE	
-00	SMALL BOX 120V VERSION
-01	SMALL BOX 230V VERSION
-02	BIG BOX 120V VERSION
-03	BIG BOX 230V VERSION
-04	FS 120V VERSION
-05	FS 240V VERSION
-06	SRM1801/TH18S 120V
-07	SRM1801/TH18S 230V

- ### HARDWARE
- \* DENOTES PARTS NOT USED ON -04 THRU -07 ASSY'S.
- SCR1 0024371 SCREW M3X10
  - SCR2 0024371 SCREW M3X10
  - SCR3 0024371 SCREW M3X10
  - SCR4 0024371 SCREW M3X10
  - SCR5 0024371 SCREW M3X10
  - SCR6 0024371 SCREW M3X10
  - SCR7 0024371 SCREW M3X10
  - SCR8 0024371 SCREW M3X10
  - \* SCR9 0024371 SCREW M3X10
  - \* SCR10 0024371 SCREW M3X10
  - SCR11 0026672 SCREW M3X12
  - SCR12 0026672 SCREW M3X12
  - SCR13 0026672 SCREW M3X12
  - SCR14 701-016-00 5-20X5/16 PHPHI TYP B BLK
  - SCR15 701-016-00 5-20X5/16 PHPHI TYP B BLK
  - SCR16 701-016-00 5-20X5/16 PHPHI TYP B BLK
  - SCR17 701-016-00 5-20X5/16 PHPHI TYP B BLK
  - SCR18 701-016-00 5-20X5/16 PHPHI TYP B BLK
  - SCR19 701-016-00 5-20X5/16 PHPHI TYP B BLK
  - WSH1 0026697 WASHER 3.2X6.2X1
  - WSH2 0026697 WASHER 3.2X6.2X1
  - WSH3 0026697 WASHER 3.2X6.2X1
  - WSH4 0026697 WASHER 3.2X6.2X1
  - WSH5 0026697 WASHER 3.2X6.2X1
  - WSH6 0026697 WASHER 3.2X6.2X1
  - \* WSH7 0021419 WASHER 3X6X2.69
  - \* WSH8 0021419 WASHER 3X6X2.69
  - \* INS1 0021424 INSULATOR 18X13X0.1
  - \* INS4 0021424 INSULATOR 18X13X0.1
  - INS2 0025433 INSULATOR 25X20X0.1
  - INS3 0025433 INSULATOR 25X20X0.1
  - E1 0008320-04 STDFSWAGEM3XBMMMLF
  - E2 0008320-04 STDFSWAGEM3XBMMMLF
  - E3 0008320-04 STDFSWAGEM3XBMMMLF
  - E4 0008320-04 STDFSWAGEM3XBMMMLF
  - E5 0008320-04 STDFSWAGEM3XBMMMLF
  - E6 0008320-04 STDFSWAGEM3XBMMMLF
  - E7 0008320-04 STDFSWAGEM3XBMMMLF
  - Zz 2034504 SILICONE RTV NON-FLOWABLE PASTE
- ADD PER GLUE DETAIL DWG ON ALL ASSY'S.

APPROVALS	DATE
DRAWN: RJ	6/25/2008
CHECKED:	
NP ENG:	
MATERIAL:	
MFG:	
MFG ENG:	
ISSUED:	



**LOUD Technologies Inc.**

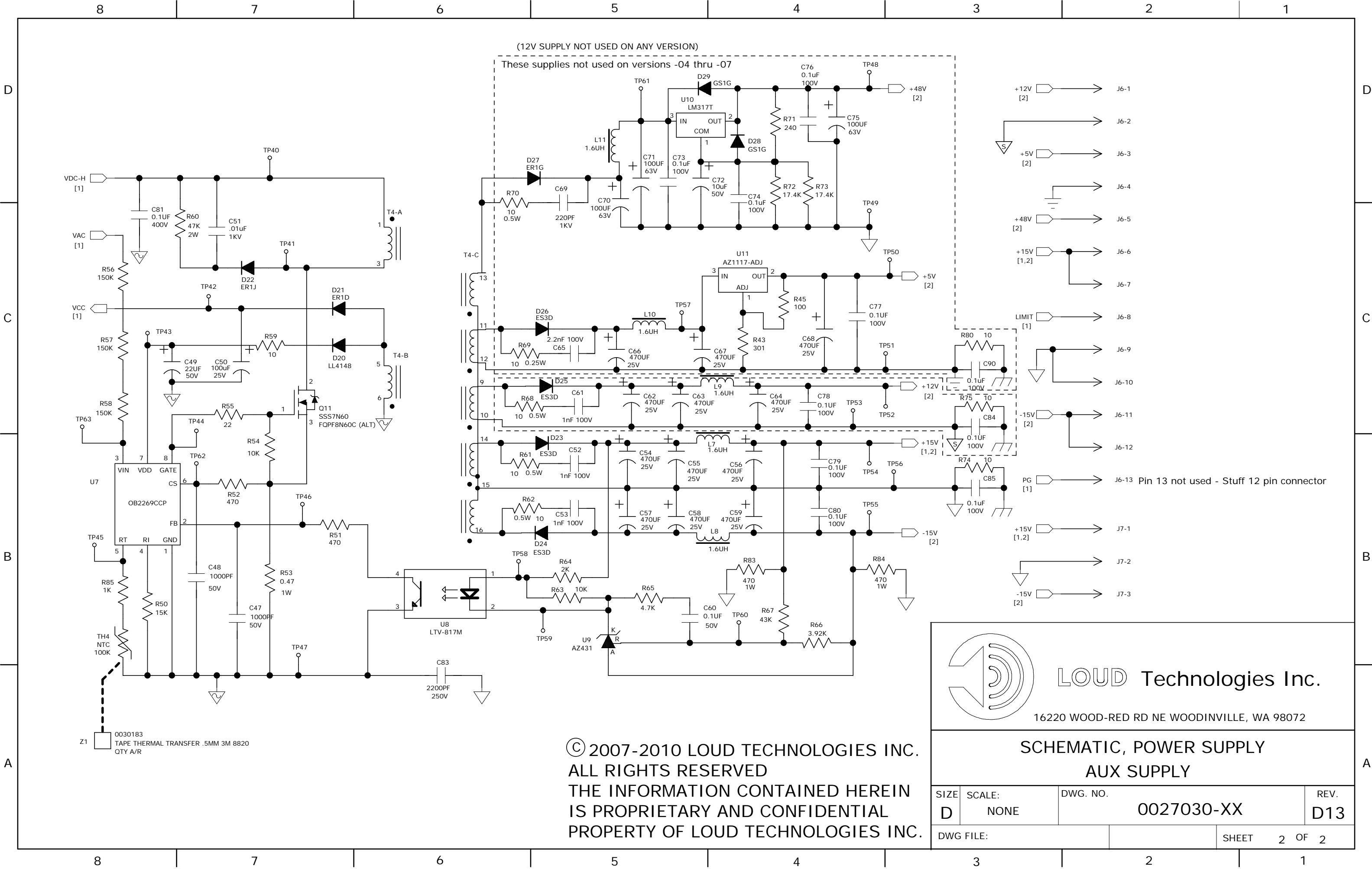
16220 WOOD-RED RD NE WOODINVILLE, WA 98072

**SCHEMATIC, POWER SUPPLY  
MAIN SUPPLY**

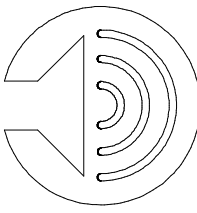
SIZE: D	SCALE: NONE	DWG. NO. 0027030-XX	REV. D13
DWG FILE:		SHEET 1 OF 2	

© 2007-2010 LOUD TECHNOLOGIES INC.  
 ALL RIGHTS RESERVED  
 THE INFORMATION CONTAINED HEREIN  
 IS PROPRIETARY AND CONFIDENTIAL  
 PROPERTY OF LOUD TECHNOLOGIES INC.

- SCH1 0027030-XX PCB ASSY SCHEMATIC, PM PS
- PCB1 0025961-03 PCB FAB POWERED MIXER POWER SUPPLY BOARD



© 2007-2010 LOUD TECHNOLOGIES INC.  
 ALL RIGHTS RESERVED  
 THE INFORMATION CONTAINED HEREIN  
 IS PROPRIETARY AND CONFIDENTIAL  
 PROPERTY OF LOUD TECHNOLOGIES INC.



**LOUD Technologies Inc.**  
 16220 WOOD-RED RD NE WOODINVILLE, WA 98072

---

**SCHEMATIC, POWER SUPPLY  
 AUX SUPPLY**

SIZE <b>D</b>	SCALE: NONE	DWG. NO. <b>0027030-XX</b>	REV. <b>D13</b>
DWG FILE:		SHEET	2 OF 2