

NOTES

n.f. = Non Fitted
n.c. = Not connected

Unless otherwise stated, all capacitors rated at 16V

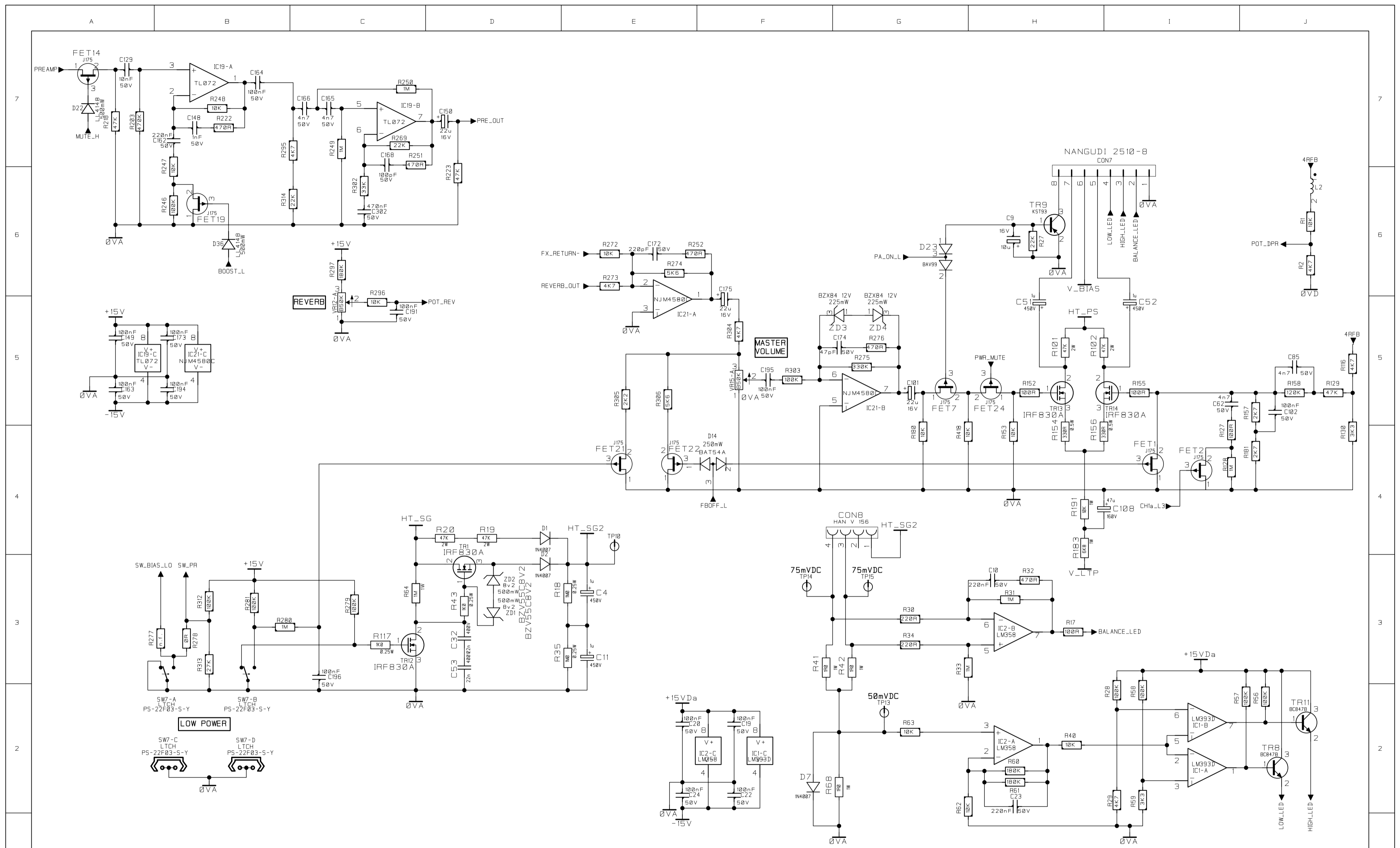
Ref: Generic

Blackstar[®]
AMPLIFICATION

COPYRIGHT EXISTS ON THIS DOCUMENT. IT MUST NOT BE USED FOR ANY PURPOSE OTHER THAN THAT FOR WHICH IT WAS SUPPLIED AND MUST NOT BE COPIED IN WHOLE OR PART WITHOUT WRITTEN PERMISSION OF BLACKSTAR AMPLIFICATION

DWG No.	119202S	ISS:	1	SHT. 1 OF 4	TITLE	MAIN BOARD PREAMP
DRAWN BY	P.J.Stevens	DATE	22/08/2017		MODEL	HT VENUE MKII
CHECKED BY	P.J.Stevens	DATE	22/09/2017		CLUB 40 & 50	
APPROVED BY	L.Vignal	DATE	22/09/2017			

ISSUE	RFC No.	DATE	INITIAL



NOTES

n.f. = Non Fitted
n.c. = Not connected

Unless otherwise stated, all capacitors rated at 16V

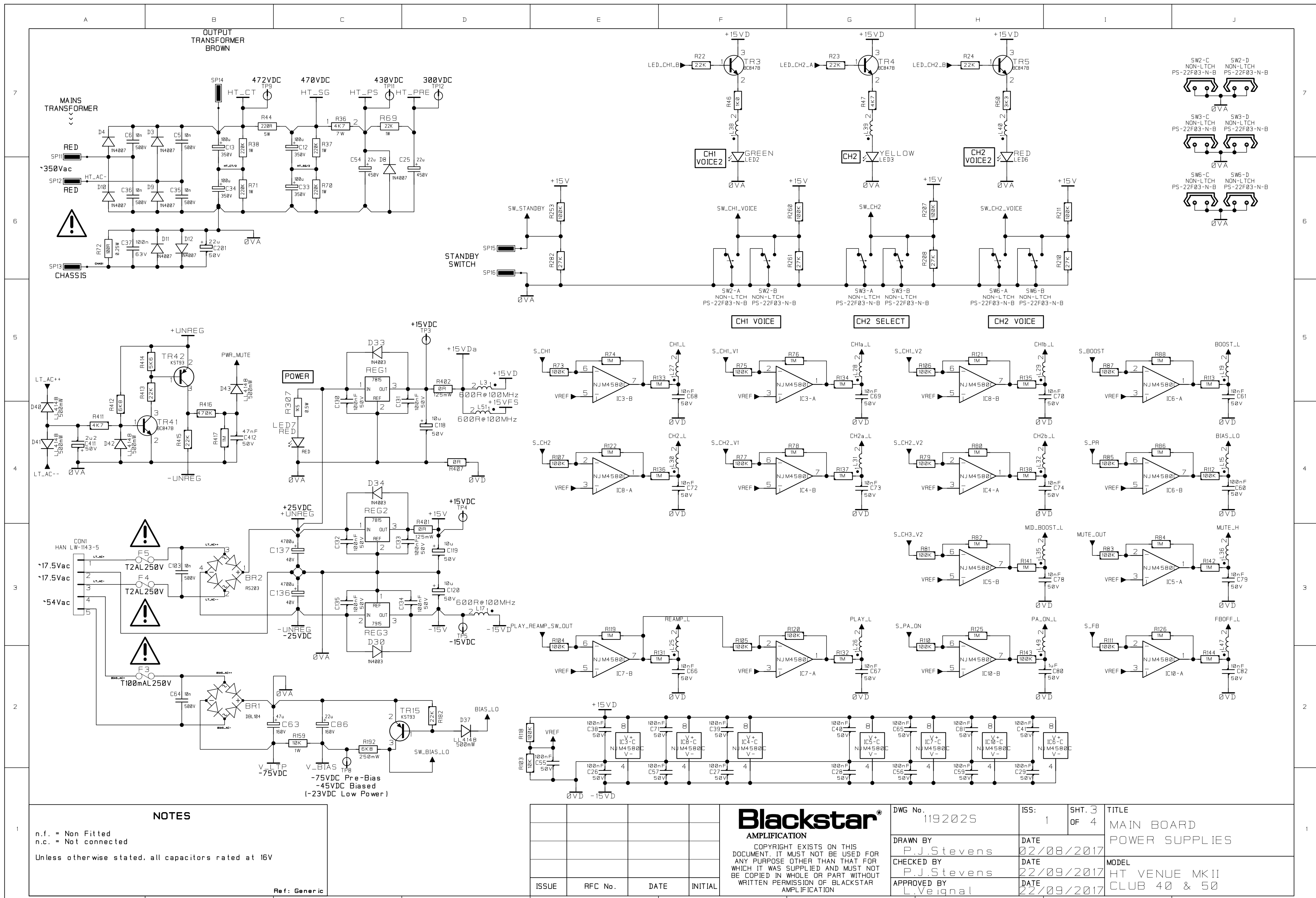
Ref: Generic

Blackstar®
AMPLIFICATION

COPYRIGHT EXISTS ON THIS DOCUMENT. IT MUST NOT BE USED FOR ANY PURPOSE OTHER THAN THAT FOR WHICH IT WAS SUPPLIED AND MUST NOT BE COPIED IN WHOLE OR PART WITHOUT WRITTEN PERMISSION OF BLACKSTAR AMPLIFICATION

DWG No.	1192025	ISS:	1	SHT. 2 OF 4	TITLE	MAIN BOARD MIDDLE STAGES
DRAWN BY	P.J.Stevens	DATE	22/08/2017			MODEL
CHECKED BY	P.J.Stevens	DATE	22/09/2017			HT VENUE MKII CLUB 40 & 50
APPROVED BY	L.Veignal	DATE	22/09/2017			

ISSUE	RFC No.	DATE	INITIAL



NOTES

n.f. = Non Fitted
n.c. = Not connected
Unless otherwise stated, all capacitors rated at 16V

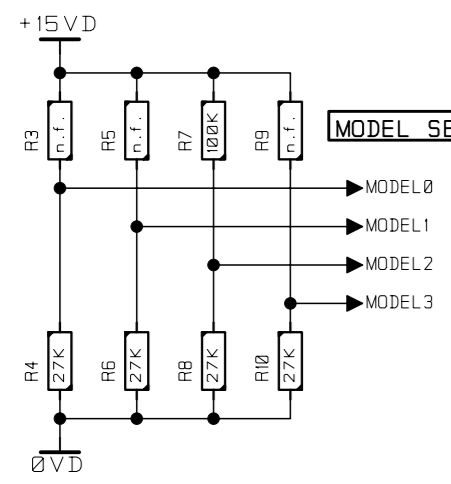
Ref: Generic

Blackstar
AMPLIFICATION

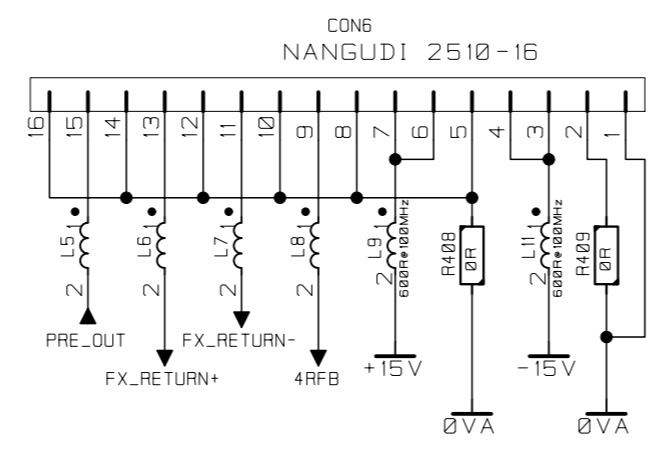
COPYRIGHT EXISTS ON THIS DOCUMENT. IT MUST NOT BE USED FOR ANY PURPOSE OTHER THAN THAT FOR WHICH IT WAS SUPPLIED AND MUST NOT BE COPIED IN WHOLE OR PART WITHOUT WRITTEN PERMISSION OF BLACKSTAR AMPLIFICATION

DWG No.	1192025	ISS:	1	SHT.	3 OF 4	TITLE	MAIN BOARD POWER SUPPLIES
DRAWN BY	P.J.Stevens	DATE	02/08/2017				
CHECKED BY	P.J.Stevens	DATE	22/09/2017				
APPROVED BY	L.Veignal	DATE	22/09/2017				
MODEL	HT VENUE MKII CLUB 40 & 50						

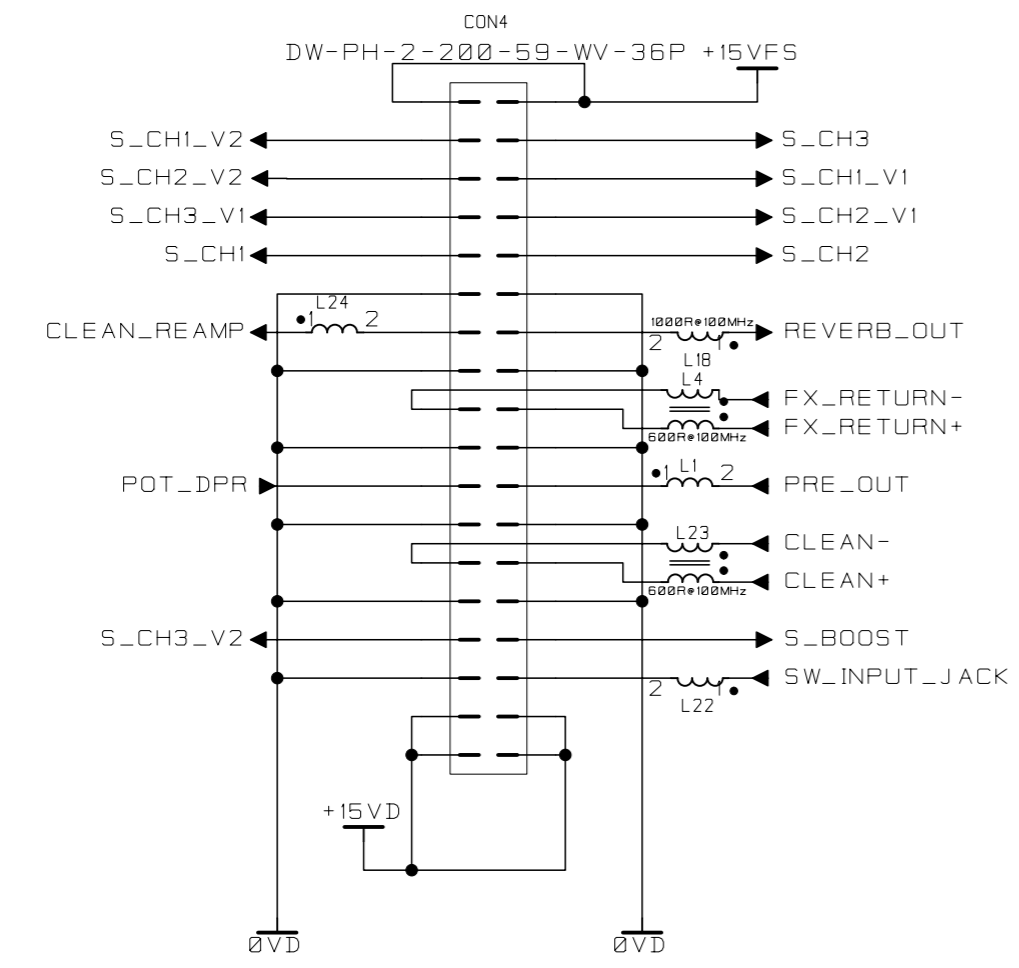
ISSUE	RFC No.	DATE	INITIAL



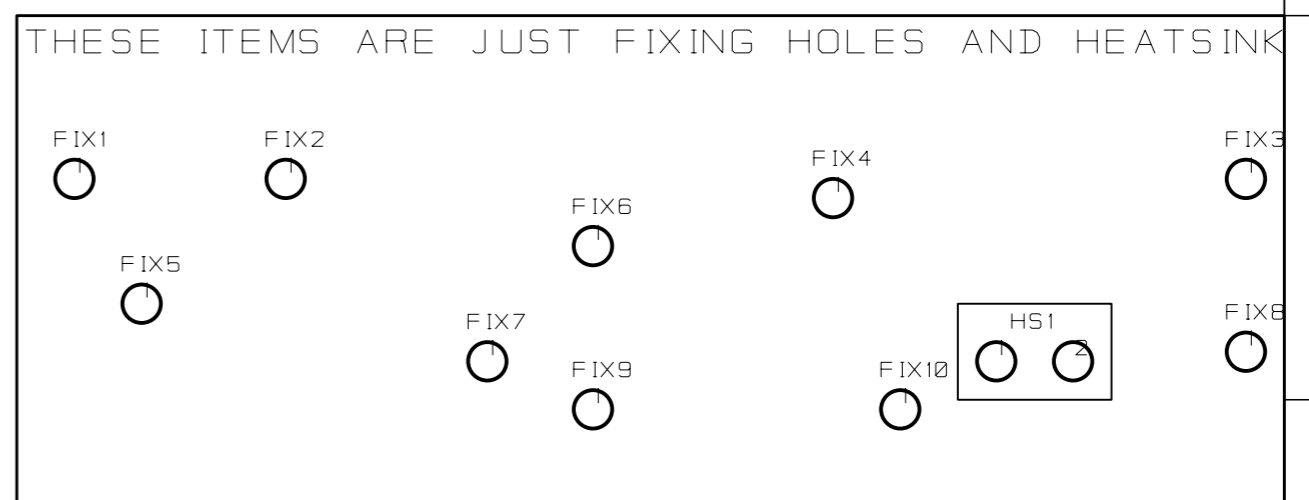
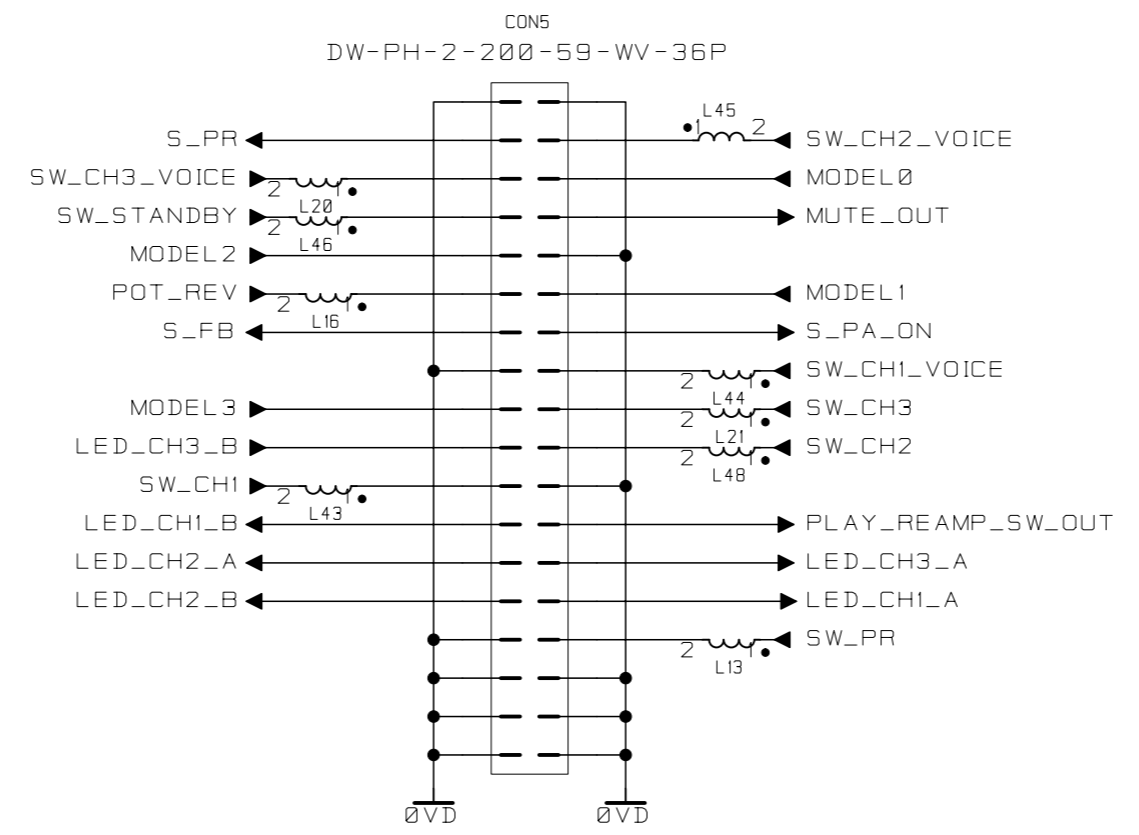
MODEL SELECT	STAGE 100	STAGE 60-2	STAGE 60-1	CLUB 50	CLUB 40
MODEL0	LOW	HIGH	LOW	LOW	LOW
MODEL1	LOW	LOW	HIGH	LOW	LOW
MODEL2	LOW	LOW	LOW	HIGH	HIGH
MODEL3	LOW	LOW	LOW	LOW	LOW



CONNECTED TO DSP PCB



CONNECTED TO DSP PCB

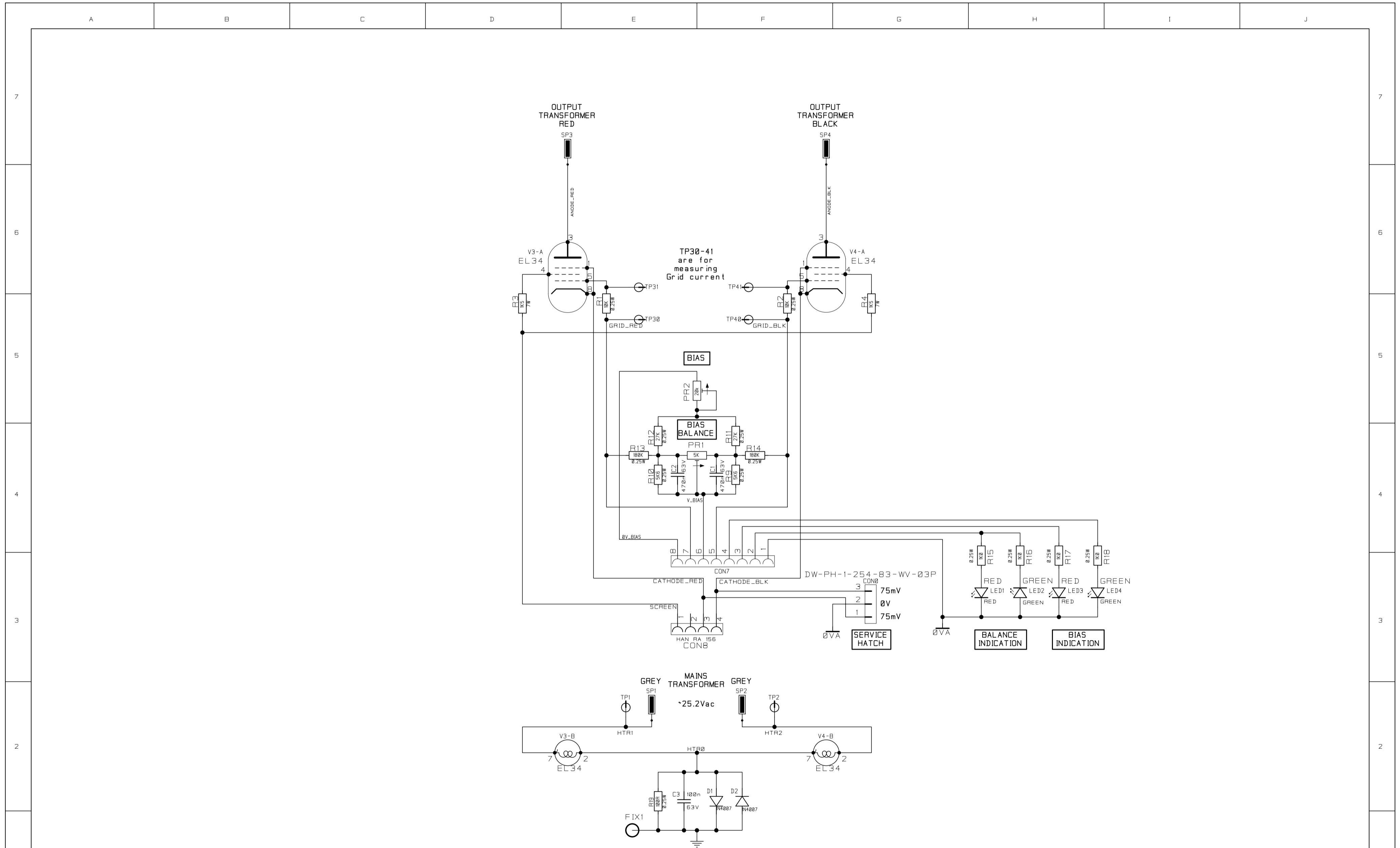


NOTES
n.f. = Non Fitted
n.c. = Not connected
Unless otherwise stated, all capacitors rated at 16V
Ref: Generic

ISSUE	RFC No.	DATE	INITIAL

Blackstar
AMPLIFICATION
COPYRIGHT EXISTS ON THIS DOCUMENT. IT MUST NOT BE USED FOR ANY PURPOSE OTHER THAN THAT FOR WHICH IT WAS SUPPLIED AND MUST NOT BE COPIED IN WHOLE OR PART WITHOUT WRITTEN PERMISSION OF BLACKSTAR AMPLIFICATION

DWG No. 1192025	ISS: 1	SHT. 4 OF 4	TITLE MAIN BOARD CONNECTORS
DRAWN BY P.J.Stevens	DATE 02/08/2017	MODEL HT VENUE MKII CLUB 40 & 50	
CHECKED BY P.J.Stevens	DATE 22/09/2017		
APPROVED BY L.Veignal	DATE 22/09/2017		



NOTES

n.f. = Non Fitted
n.c. = Not connected

Unless otherwise stated, all capacitors rated at 16V

Ref: Generic

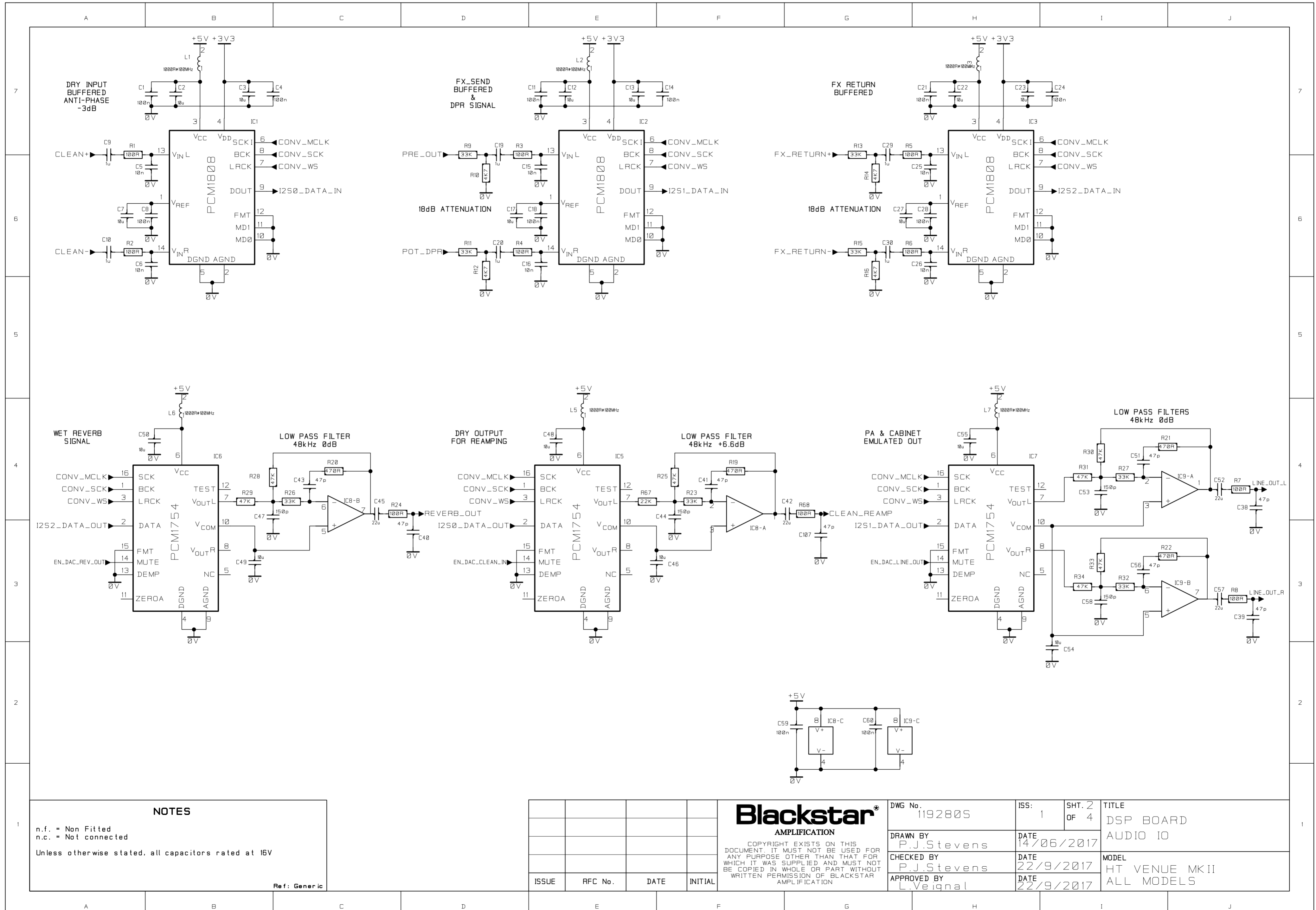
ISSUE	RFC No.	DATE	INITIAL

Blackstar[®]
AMPLIFICATION

COPYRIGHT EXISTS ON THIS DOCUMENT. IT MUST NOT BE USED FOR ANY PURPOSE OTHER THAN THAT FOR WHICH IT WAS SUPPLIED AND MUST NOT BE COPIED IN WHOLE OR PART WITHOUT WRITTEN PERMISSION OF BLACKSTAR AMPLIFICATION

DWG No. 119262S	ISS: 1	SHT. 1 OF 1
DRAWN BY P.J.Stevens	DATE 15/06/2017	
CHECKED BY P.J.Stevens	DATE 22/09/2017	
APPROVED BY L.Veignal	DATE 22/09/2017	

TITLE HT VENUE 50W POWER VALVE BOARD
MODEL CLUB & STAGE 40, 50 & 60 WATT MODELS



NOTES

n.f. = Non Fitted
n.c. = Not connected

Unless otherwise stated, all capacitors rated at 16V

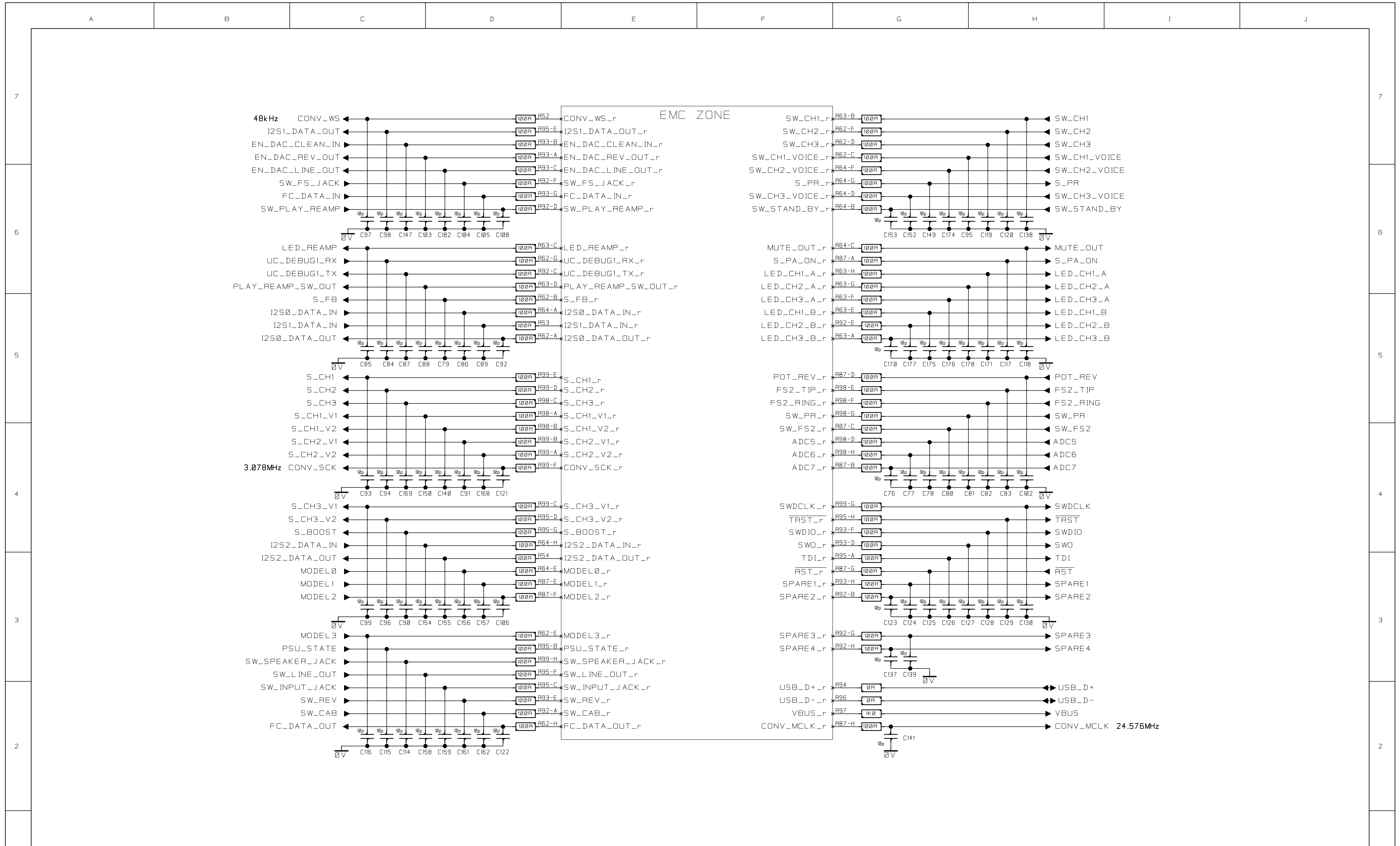
Ref: Generic

ISSUE	RFC No.	DATE	INITIAL

Blackstar[®]
AMPLIFICATION

COPYRIGHT EXISTS ON THIS DOCUMENT. IT MUST NOT BE USED FOR ANY PURPOSE OTHER THAN THAT FOR WHICH IT WAS SUPPLIED AND MUST NOT BE COPIED IN WHOLE OR PART WITHOUT WRITTEN PERMISSION OF BLACKSTAR AMPLIFICATION

DWG No. 1192805	ISS: 1	SHT. 2 OF 4	TITLE DSP BOARD AUDIO IO
DRAWN BY P.J.Stevens	DATE 14/06/2017		
CHECKED BY P.J.Stevens	DATE 22/9/2017		
APPROVED BY L.Veignal	DATE 22/9/2017		



NOTES

n.f. = Non Fitted
n.c. = Not connected

Unless otherwise stated, all capacitors rated at 16V

Ref: Generic

ISSUE	RFC No.	DATE	INITIAL

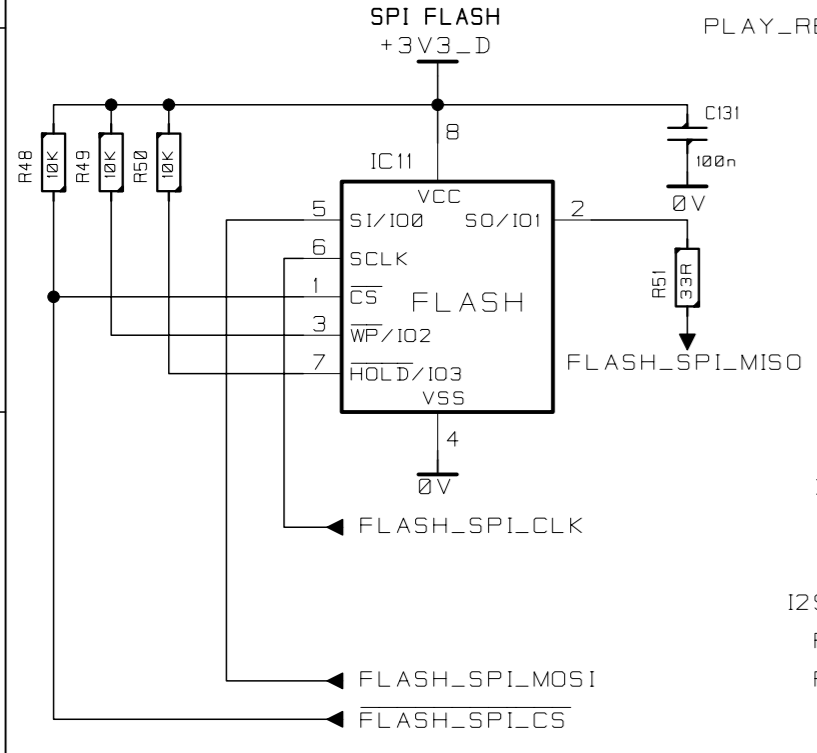
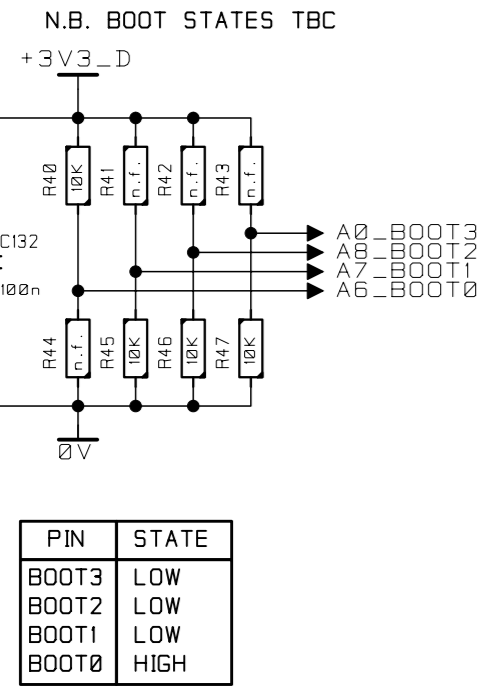
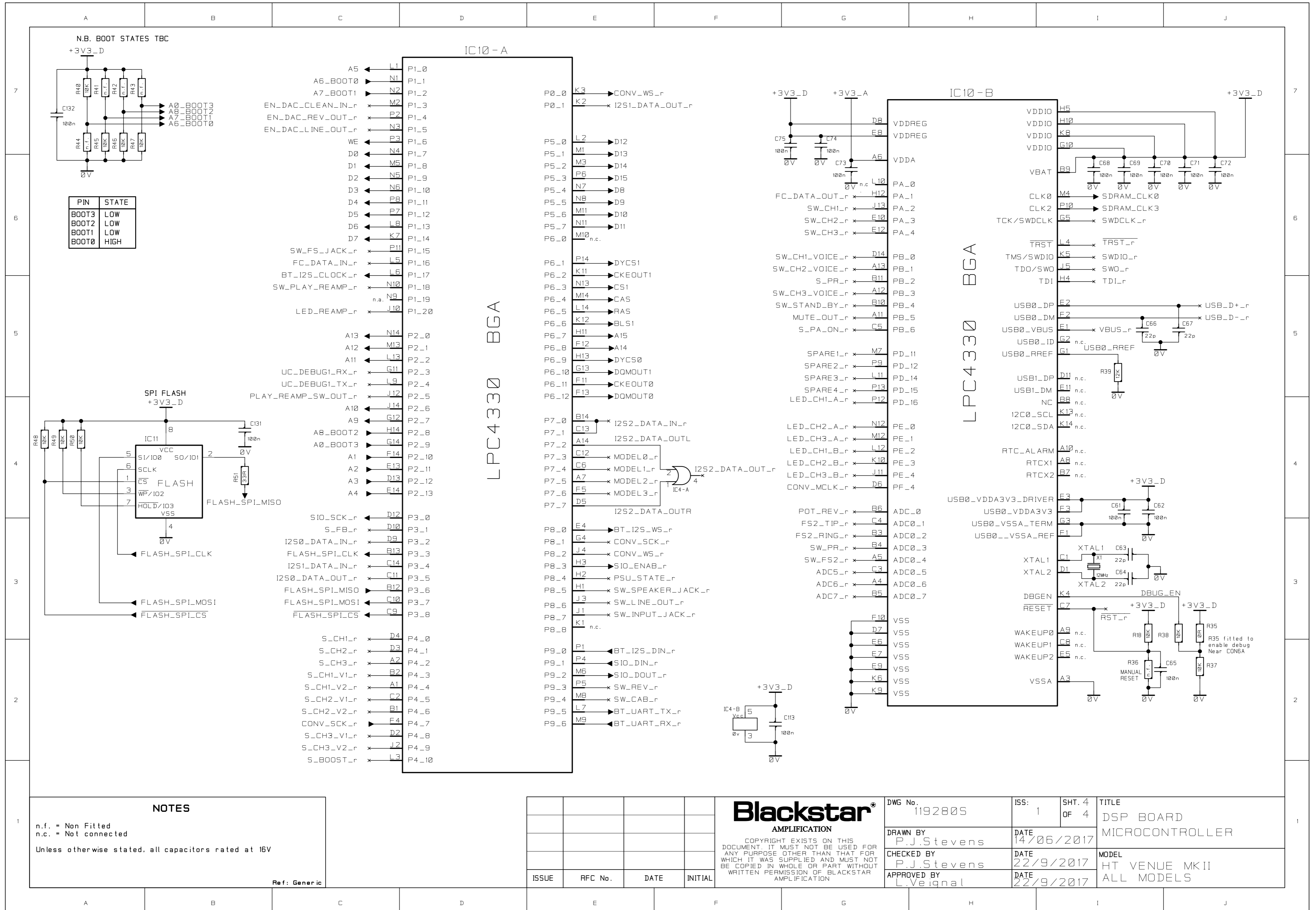
Blackstar[®]
AMPLIFICATION

COPYRIGHT EXISTS ON THIS DOCUMENT. IT MUST NOT BE USED FOR ANY PURPOSE OTHER THAN THAT FOR WHICH IT WAS SUPPLIED AND MUST NOT BE COPIED IN WHOLE OR PART WITHOUT WRITTEN PERMISSION OF BLACKSTAR AMPLIFICATION

DWG No. 1192805	ISS: 1	SHT. 3 OF 4	TITLE DSP BOARD EMC ZONE
DRAWN BY P.J.Stevens	DATE 14/06/2017	MODEL HT VENUE MKII ALL MODELS	
CHECKED BY P.J.Stevens	DATE 22/9/2017		
APPROVED BY L.Veignal	DATE 22/9/2017		

1

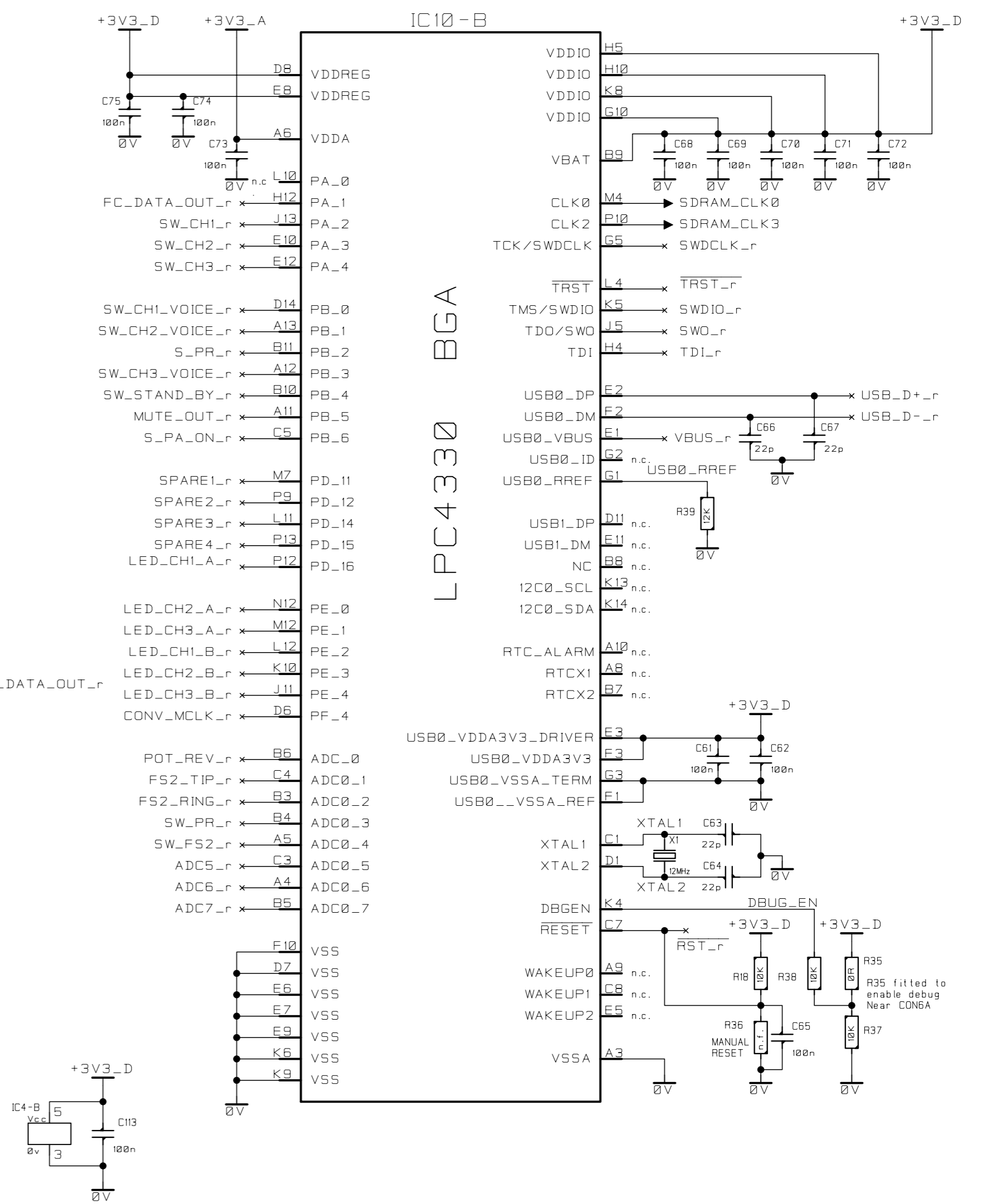
1



A5	L1	P1_0
A6_BOOT0	N1	P1_1
A7_BOOT1	N2	P1_2
EN_DAC_CLEAN_IN_r	M2	P1_3
EN_DAC_REV_OUT_r	P2	P1_4
EN_DAC_LINE_OUT_r	N3	P1_5
WE	P3	P1_6
D0	N4	P1_7
D1	M5	P1_8
D2	N5	P1_9
D3	N6	P1_10
D4	P8	P1_11
D5	P7	P1_12
D6	L8	P1_13
D7	K7	P1_14
SW_FS_JACK_r	P11	P1_15
FC_DATA_IN_r	L5	P1_16
BT_I2S_CLOCK_r	L6	P1_17
SW_PLAY_REAMP_r	N10	P1_18
LED_REAMP_r	n.a. N9	P1_19
	J10	P1_20
A13	N14	P2_0
A12	M13	P2_1
A11	L13	P2_2
UC_DEBUG1_RX_r	G11	P2_3
UC_DEBUG1_TX_r	L9	P2_4
PLAY_REAMP_SW_OUT_r	J12	P2_5
A10	J14	P2_6
A9	G12	P2_7
A8_BOOT2	H14	P2_8
A0_BOOT3	F14	P2_9
A1	F14	P2_10
A2	E13	P2_11
A3	D13	P2_12
A4	E14	P2_13
SIO_SCK_r	D12	P3_0
S_FB_r	D10	P3_1
I2S0_DATA_IN_r	D9	P3_2
FLASH_SPI_CLK	B13	P3_3
I2S1_DATA_IN_r	C14	P3_4
I2S0_DATA_OUT_r	C11	P3_5
FLASH_SPI_MISO	B12	P3_6
FLASH_SPI_MOSI	C10	P3_7
FLASH_SPI_CS	C9	P3_8
S_CH1_r	D4	P4_0
S_CH2_r	D3	P4_1
S_CH3_r	A2	P4_2
S_CH1_V1_r	B2	P4_3
S_CH1_V2_r	A1	P4_4
S_CH2_V1_r	C2	P4_5
S_CH2_V2_r	B1	P4_6
CONV_SCK_r	F4	P4_7
S_CH3_V1_r	D2	P4_8
S_CH3_V2_r	J2	P4_9
S_BOOST_r	L3	P4_10

LPC4330 BGA

P0_0	K3	CONV_WS_r
P0_1	K2	I2S1_DATA_OUT_r
P5_0	L2	D12
P5_1	M1	D13
P5_2	M3	D14
P5_3	P6	D15
P5_4	N7	D8
P5_5	N8	D9
P5_6	M11	D10
P5_7	N11	D11
P6_0	M10 n.c.	
P6_1	P14	DYCS1
P6_2	K11	CKEOUT1
P6_3	N13	CS1
P6_4	M14	CAS
P6_5	L14	RA5
P6_6	K12	BLS1
P6_7	H11	A15
P6_8	F12	A14
P6_9	H13	DYCS0
P6_10	G13	DOMOUT1
P6_11	F11	CKEOUT0
P6_12	F13	DOMOUT0
P7_0	B14	I2S2_DATA_IN_r
P7_1	C13	I2S2_DATA_OUTL
P7_2	A14	I2S2_DATA_OUTR
P7_3	C12	MODEL0_r
P7_4	C6	MODEL1_r
P7_5	A7	MODEL2_r
P7_6	F5	MODEL3_r
P7_7	D5	I2S2_DATA_OUTR
P8_0	E4	BT_I2S_WS_r
P8_1	G4	CONV_SCK_r
P8_2	J4	CONV_WS_r
P8_3	H3	SIO_ENAB_r
P8_4	H2	PSU_STATE_r
P8_5	H1	SW_SPEAKER_JACK_r
P8_6	J3	SW_LINE_OUT_r
P8_7	J1	SW_INPUT_JACK_r
P8_8	K1 n.c.	
P9_0	P1	BT_I2S_DIN_r
P9_1	P4	SIO_DIN_r
P9_2	M6	SIO_DOUT_r
P9_3	P5	SW_REV_r
P9_4	M8	SW_CAB_r
P9_5	L7	BT_UART_TX_r
P9_6	M9	BT_UART_RX_r



LPC4330 BGA

NOTES

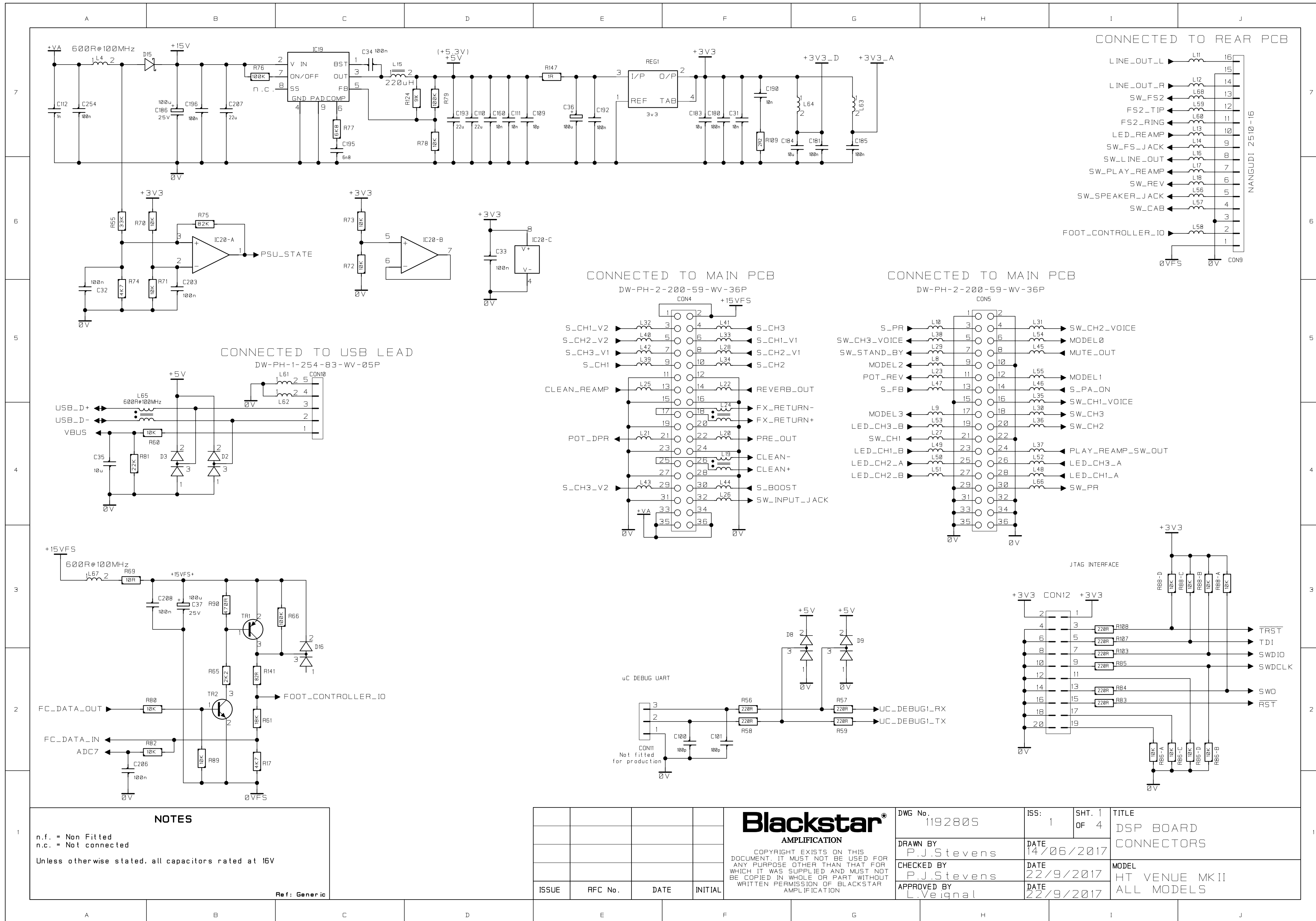
n.f. = Non Fitted
n.c. = Not connected

Unless otherwise stated, all capacitors rated at 16V

Ref: Generic

ISSUE	RFC No.	DATE	INITIAL

<p>Blackstar AMPLIFICATION</p> <p>COPYRIGHT EXISTS ON THIS DOCUMENT. IT MUST NOT BE USED FOR ANY PURPOSE OTHER THAN THAT FOR WHICH IT WAS SUPPLIED AND MUST NOT BE COPIED IN WHOLE OR PART WITHOUT WRITTEN PERMISSION OF BLACKSTAR AMPLIFICATION</p>	DWG No.	ISS:	SHT. 4	TITLE
	1192805	1	OF 4	DSP BOARD MICROCONTROLLER
	DRAWN BY P.J.Stevens	DATE 14/06/2017	MODEL HT VENUE MKII ALL MODELS	
CHECKED BY P.J.Stevens	DATE 22/9/2017			
APPROVED BY L.Veignal	DATE 22/9/2017			



NOTES

n.f. = Non Fitted
n.c. = Not connected

Unless otherwise stated, all capacitors rated at 16V

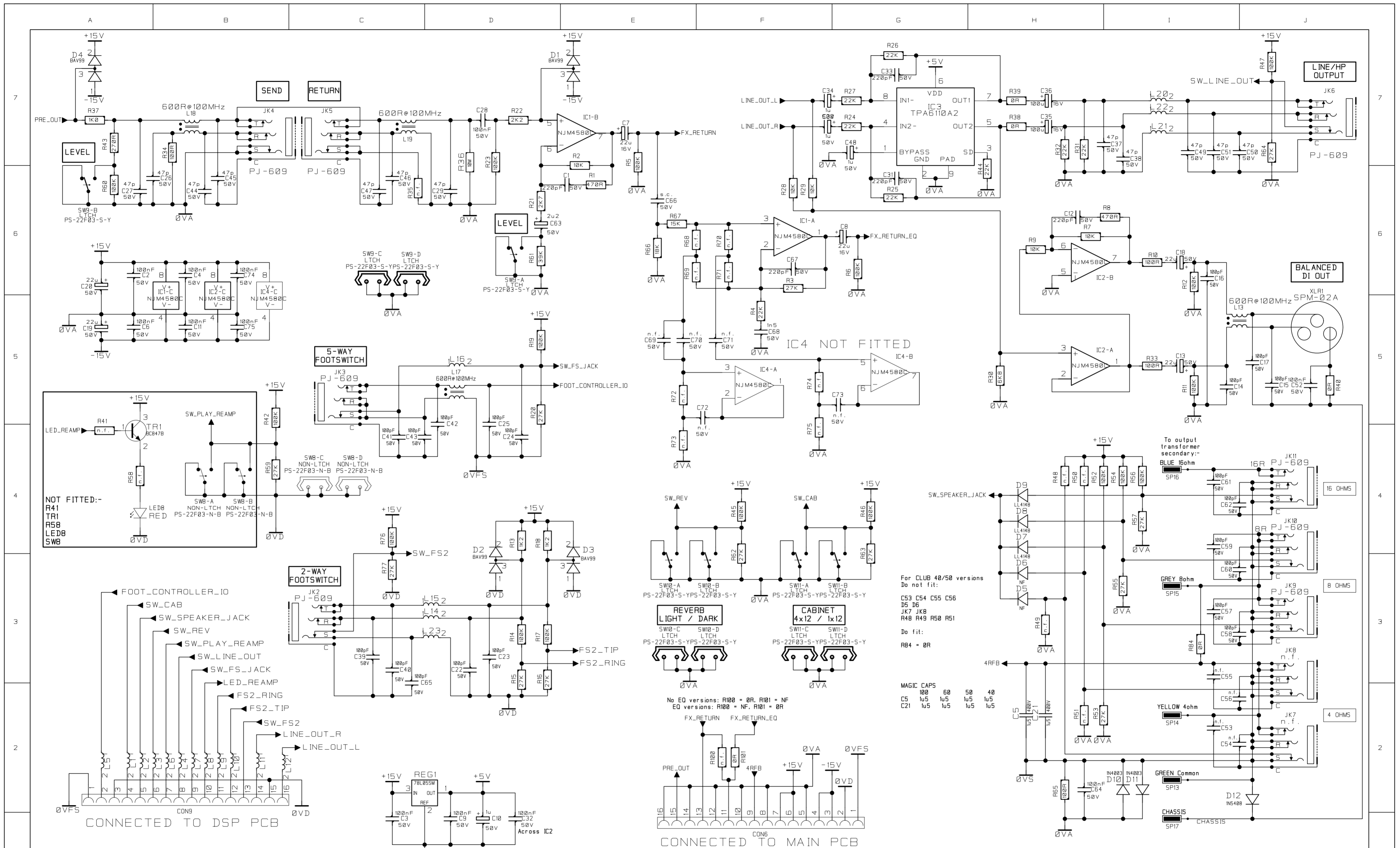
Ref: Generic

ISSUE	RFC No.	DATE	INITIAL

Blackstar[®]
AMPLIFICATION

COPYRIGHT EXISTS ON THIS DOCUMENT. IT MUST NOT BE USED FOR ANY PURPOSE OTHER THAN THAT FOR WHICH IT WAS SUPPLIED AND MUST NOT BE COPIED IN WHOLE OR PART WITHOUT WRITTEN PERMISSION OF BLACKSTAR AMPLIFICATION

DWG No.	1192805	ISS:	1	SHT. 1	OF 4	TITLE	DSP BOARD CONNECTORS
DRAWN BY	P.J.Stevens	DATE	14/06/2017			MODEL	HT VENUE MKII
CHECKED BY	P.J.Stevens	DATE	22/9/2017			ALL MODELS	
APPROVED BY	L.Vaignal	DATE	22/9/2017				



NOTES

n.f. = Non Fitted
n.c. = Not connected

Unless otherwise stated, all capacitors rated at 16V

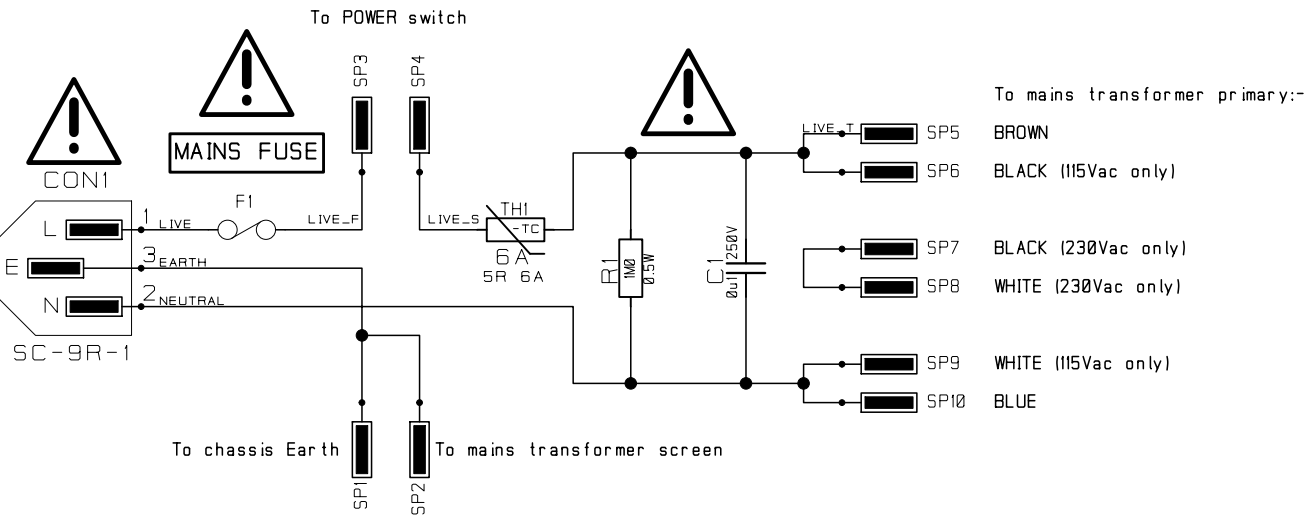
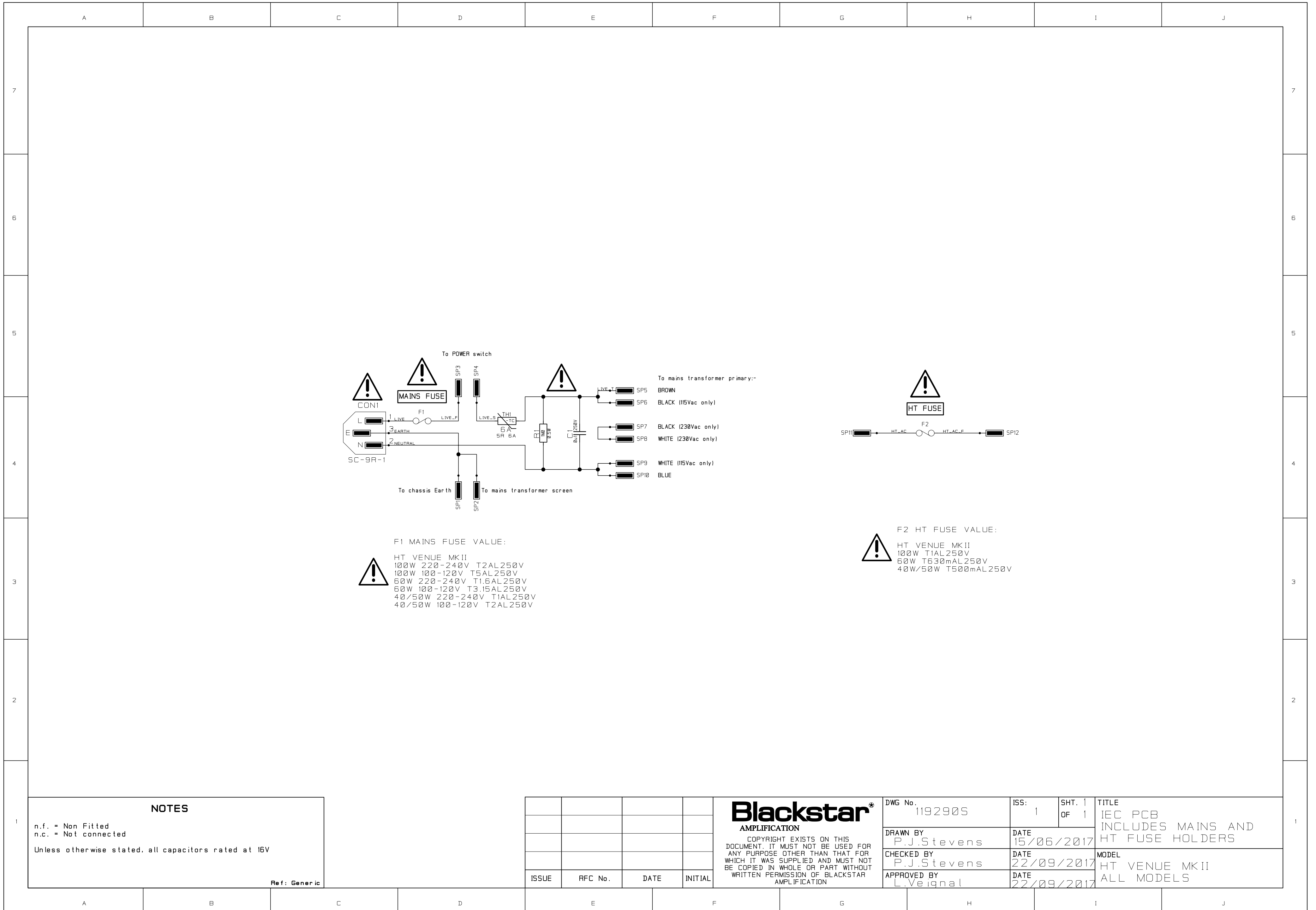
Ref: Generic

ISSUE	RFC No.	DATE	INITIAL

Blackstar[®]
AMPLIFICATION

COPYRIGHT EXISTS ON THIS DOCUMENT. IT MUST NOT BE USED FOR ANY PURPOSE OTHER THAN THAT FOR WHICH IT WAS SUPPLIED AND MUST NOT BE COPIED IN WHOLE OR PART WITHOUT WRITTEN PERMISSION OF BLACKSTAR AMPLIFICATION

DWG No. 1192405 -VD	ISS: 2	SHT. 1 OF 1	TITLE HT VENUE MKII REAR BOARD
DRAWN BY P.J.Stevens	DATE 02/08/2017	MODEL CLUB 50 HEAD	
CHECKED BY P.J.Stevens	DATE 22/09/2017		
APPROVED BY L.Veignal	DATE 22/09/2017		



F1 MAINS FUSE VALUE:

HT VENUE MKII
 100W 220-240V T2AL250V
 100W 100-120V T5AL250V
 60W 220-240V T1.6AL250V
 60W 100-120V T3.15AL250V
 40/50W 220-240V T1AL250V
 40/50W 100-120V T2AL250V

F2 HT FUSE VALUE:

HT VENUE MKII
 100W T1AL250V
 60W T630mAL250V
 40W/50W T500mAL250V

NOTES

n.f. = Non Fitted
 n.c. = Not connected

Unless otherwise stated, all capacitors rated at 16V

Ref: Generic

ISSUE	RFC No.	DATE	INITIAL

Blackstar[®]
 AMPLIFICATION

COPYRIGHT EXISTS ON THIS DOCUMENT. IT MUST NOT BE USED FOR ANY PURPOSE OTHER THAN THAT FOR WHICH IT WAS SUPPLIED AND MUST NOT BE COPIED IN WHOLE OR PART WITHOUT WRITTEN PERMISSION OF BLACKSTAR AMPLIFICATION

DWG No. 1192905	ISS: 1	SHT. 1 OF 1
DRAWN BY P.J.Stevens	DATE 15/06/2017	
CHECKED BY P.J.Stevens	DATE 22/09/2017	
APPROVED BY L.Veignal	DATE 22/09/2017	

TITLE
IEC PCB
INCLUDES MAINS AND
HT FUSE HOLDERS

MODEL
HT VENUE MKII
ALL MODELS