

Wharfedale Pro Service Manual: TITAN-12 Professional Speaker

TITAN-12

★ TABLE OF CONTENTS

PECIFICATIONS-----	2
SCHEMATIC DIAGRAM-----	3
ASSEMBLY PART LIST-----	4
ELECTRONICS PARTS LIST-----	5

1. SPECIFICATIONS

TITAN 12 SPECIFICATIONS

LOUDSPEAKER TYPE: 12?2-Way
FREQUENCY RESPONSE (?dB):
55-20kHz
SENSITIVITY (1W@1M): 98dB
HF COVERAGE (H X V): 90° X 60°
PEAK SPL: 120dB
SYSTEM IMPEDANCE: 8 ohm

POWER HANDLING CAPABILITY

CONTINUOUS: 250W
MUSIC: 500W
PEAK: 1000W

LOW FREQUENCY DRIVER

SIZE: 305mm/12"
COIL SIZE: 51.6mm/2"

HIGH FREQUENCY DRIVER

TYPE: Compression Driver
COIL SIZE: 44 mm/1.75"
EXIT SIZE: 25mm/1"
DIAPHRAGM MATERIAL: Titanium

HIGH FREQUENCY HORN

TYPE: EWG?- Elliptical Waveguide
THROAT SIZE: 25mm/1"

CROSSOVER

TYPE: 2-way
FREQUENCY/FILTER: 2.4 kHz /
Linkwitz-Riley

HF DRIVER PROTECTION: DTF?-
Dynam nt
HF LONG-THROW EQ COMPENSATION:
3dB boost (long-throw) / Flat (near-
field)

ENCLOSURE

SHAPE: Trapezoidal for vertical
array and horizontal stage monitor
applications
MATERIAL: Polypropylene

RIGGING

(9) M8 threaded rigging points for safe
flown applications
(4) M8 threaded rigging points on bot-
tom in OmniMount?60.0-type fHoot-
print.
Speaker pole-mount receptacle with lock
screw
Optional wall-mount bracket
Optional dual-unit array speaker stand
bracket

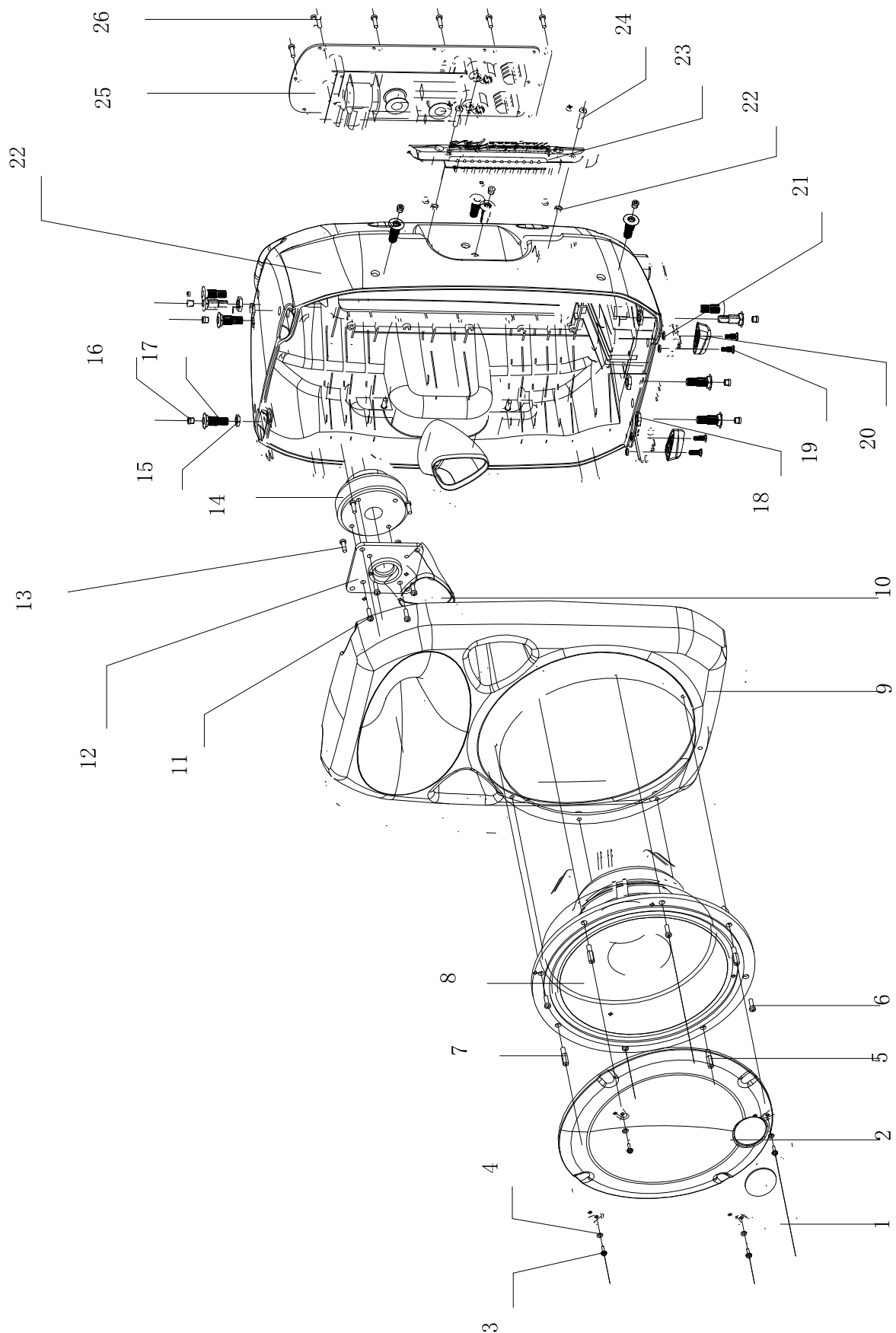
IN/OUT PANEL

INPUT CONNECTORS: (2) 1/4?jacks +
(2) NL4 connectors

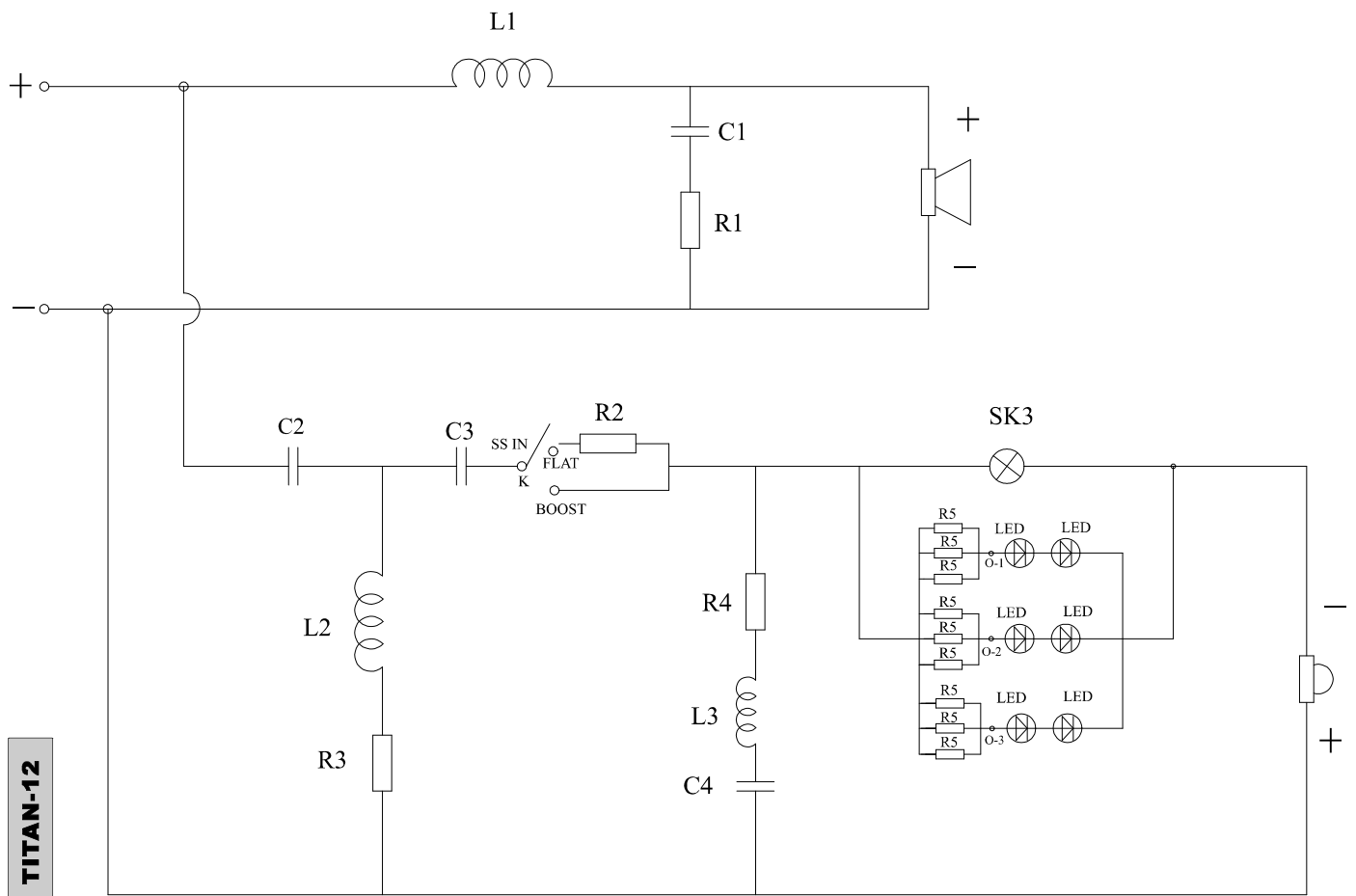
DIMENSIONS/WEIGHTS

NET WEIGHT: 14kg/30.8lbs
GROSS WEIGHT: 17kg/37.4lbs
HEIGHT: 556mm/21.9"
WIDTH FRONT: 384mm/15.1"
WIDTH BACK: 180mm/7.1"
DEPTH: 312mm/12.3"

2.ASSEMBLY SKETCH



3.SCHEMATIC DIAGRAM



R1=4 OHM/30W	C2=3.0uF/250V
R2=5 OHM/25W	C3=6uF/250V
R3=4 OHM/20W	C4=1.5uF/250V
R4=8 OHM/10W	L1=0.7mH
R5=47 OHM/0.25W	L2=0.3mH
C1=8.2uF/250V	L3=0.17mH

4.ASSEMBLY PARTS LIST

R/N	P/N	PART NAME	DESCRIPTION	QUA
1	313-2104900001	LOGO PLATE		1
2	310-2010470001	FRONT STEEL GRILLE		1
3	538-4001080801A	SCREWS	MV(+)4*8 B Zn	4
4	513-4012130800A	WASHER		4
5	565-0413100001	SCREWS	M4*13*14*30*16	2
6	537-5001150801A	SCREWS	M5*30	4
7	565-0413100002	SCREWS	M4*13*14*27.5*16	2
8	ZD-64301-01	WOOFER		1
9	200-2010470003	FRONT FRAME		1
10	232-2010470001	LEFT PLASTIC TUBE		1
11	232-2010470002	RIGHT PLASTIC TUBE		1
12	537-6001100801A	SCREWS	MV(+)6*10	4
13	249-2010490001	ANNECTENT BRACKET		1
14	559-5001300071A	SCREWS	M5*30	4
15	ZD-53301-01	TWEETER		1
16	500-1200951100	NUT	M12	2
17	274-0400900786	KEYHOLE COVER		10
18	321-2801202836	SCREWS		10
19	500-1015800800A	NUT	M10	8
20	537-5001250801A	SCREWS	MP(+)5*25 BZn	4
21	231-2104700000	PLASTIC FOOT		2
22	201-2010470003	MAIN FRAME		1
23	500-5080400300A	NUT	M5	2
24	500-6000084080A	NUT	M6 BZn	4
25	243-2010470000	PLASTIC HANDLE		2
26	539-6001350802A	SCREWS	M6*35	4
27	600-1047000000	CROSSOVER		1
28	557-4001208061A	SCREWS	4*20PA H	10

5.ELECTRONIC PARTS LIST

R/N	P/N	PART NAME	DESCRIPTION	QUA
1	300-2104700001	AL PLATE		1
2	053-2104701109	PCB PLATE		1
3	308-2010490001	LAMP HOLDER		1
4	079-0002000000	SAFTY LAMP		1
5	080-0600701000	INDUCTANCE	0.7mH	1
6	080-0300320100	INDUCTANCE	0.3mH	1
7	080-0300205000H	INDUCTANCE	0.17mH	1
8	001-4701205010	RESISTOR	470 OHM/0.25W	12
9	014-8250411002	CAPACITOR	8.2uF/250V	1
10	014-3050411002	CAPACITOR	3.0uF/250V	1
11	014-6050411002	CAPACITOR	6.0uF/250V	1
12	014-1550411002	CAPACITOR	1.5uF/250V	1
13	001-4009513100	RESISTOR	4 OHM/30W	1
14	001-4009519100	RESISTOR	4 OHM/25W	1
15	001-5009519100	RESISTOR	5 OHM/25W	1
16	001-8009511100	RESISTOR	8 OHM/10W	1
17	049-1304113124	PHONE JACK		2
18	046-0300000100	SPEAKER JACK		2
19	043-0500000000	SWITCH		1