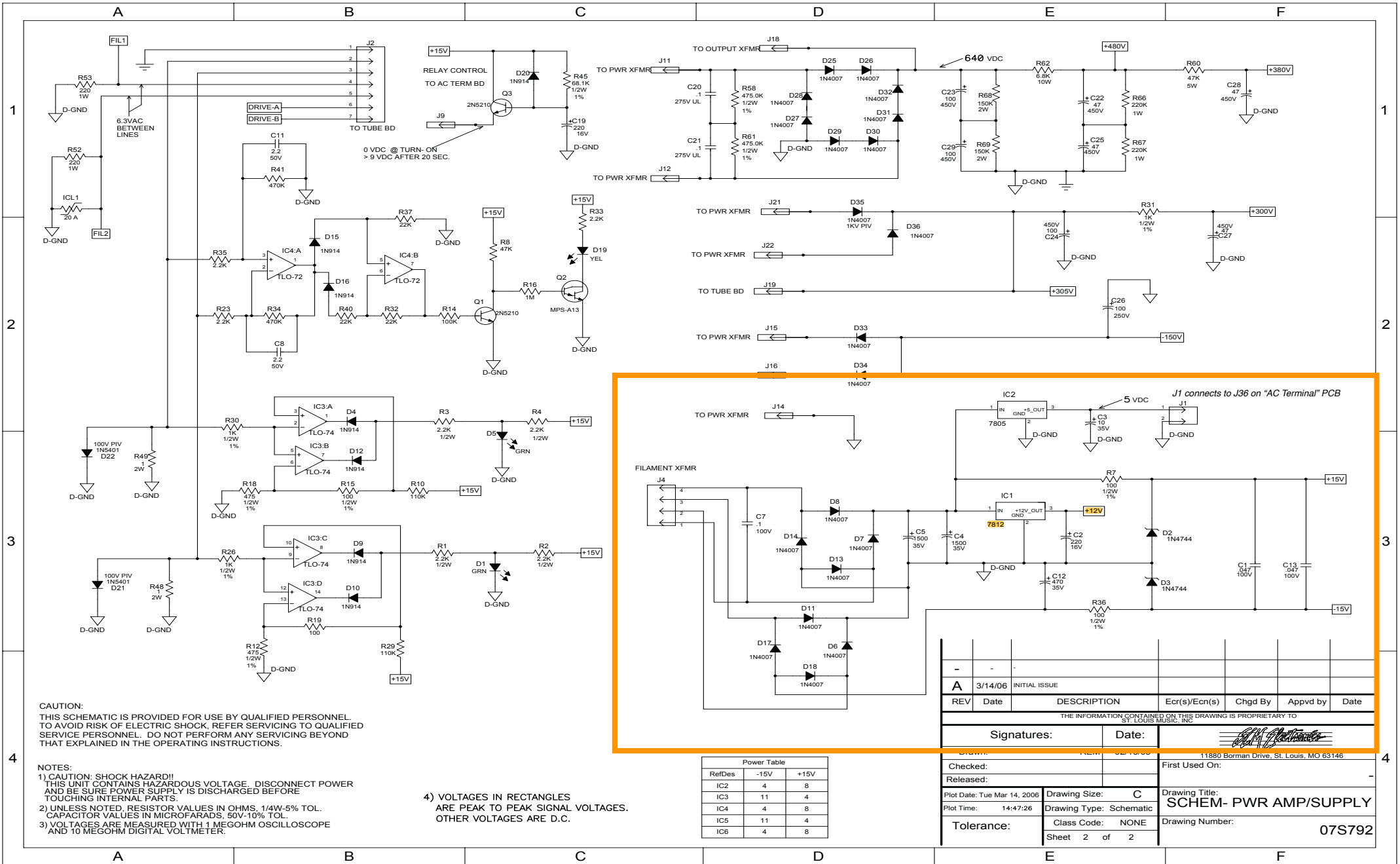


REV	Date	DESCRIPTION	Ecr(s)/Ecn(s)	Chgd By	Appvd by	Date
A	3/14/06	INITIAL ISSUE				
THE INFORMATION CONTAINED ON THIS DRAWING IS PROPRIETARY TO ST. LOUIS MUSIC, INC						
Signatures:		Date:		 11880 Borman Drive, St. Louis, MO 63146		
Drawn: REM		02/16/05				
Checked:		Released:		First Used On:		
Plot Date: Tue Mar 14, 2006		Drawing Size: C		Drawing Title: SCHEM- PWR AMP/SUPPLY		
Plot Time: 10:46:12		Drawing Type: Schematic		Drawing Number: 07S792		
Tolerance:		Class Code: NONE		Sheet 1 of 2		



CAUTION:  
THIS SCHEMATIC IS PROVIDED FOR USE BY QUALIFIED PERSONNEL.  
TO AVOID RISK OF ELECTRIC SHOCK, REFER SERVICING TO QUALIFIED  
SERVICE PERSONNEL. DO NOT PERFORM ANY SERVICING BEYOND  
THAT EXPLAINED IN THE OPERATING INSTRUCTIONS.

NOTES:  
1) CAUTION: SHOCK HAZARD!!  
THIS UNIT CONTAINS HAZARDOUS VOLTAGE. DISCONNECT POWER  
AND BE SURE POWER SUPPLY IS DISCHARGED BEFORE  
TOUCHING INTERNAL PARTS.  
2) UNLESS NOTED, RESISTOR VALUES IN OHMS, 1/4W-5% TOL.  
CAPACITOR VALUES IN MICROFARADS, 50V-10% TOL.  
3) VOLTAGES ARE MEASURED WITH 1 MEGOHM OSCILLOSCOPE  
AND 10 MEGOHM DIGITAL VOLTMETER.

4) VOLTAGES IN RECTANGLES  
ARE PEAK TO PEAK SIGNAL VOLTAGES.  
OTHER VOLTAGES ARE D.C.

Power Table		
RefDes	-15V	+15V
IC2	4	8
IC3	11	4
IC4	4	8
IC5	11	4
IC6	4	8

-		-		-		
A	3/14/06	INITIAL ISSUE				
REV	Date	DESCRIPTION	Ecr(s)/Ecn(s)	Chgd By	Appvd by	Date
THE INFORMATION CONTAINED ON THIS DRAWING IS PROPRIETARY TO ST. LOUIS MUSIC, INC.						
Signatures:			Date:			
DRAWN: [Signature]			DATE: [Signature]			
Checked:			First Used On:			
Released:						
Plot Date: Tue Mar 14, 2006		Drawing Size: C		Drawing Title: SCHEM- PWR AMP/SUPPLY		
Plot Time: 14:47:26		Drawing Type: Schematic		Drawing Number: 07S792		
Tolerance:		Class Code: NONE		Sheet 2 of 2		