

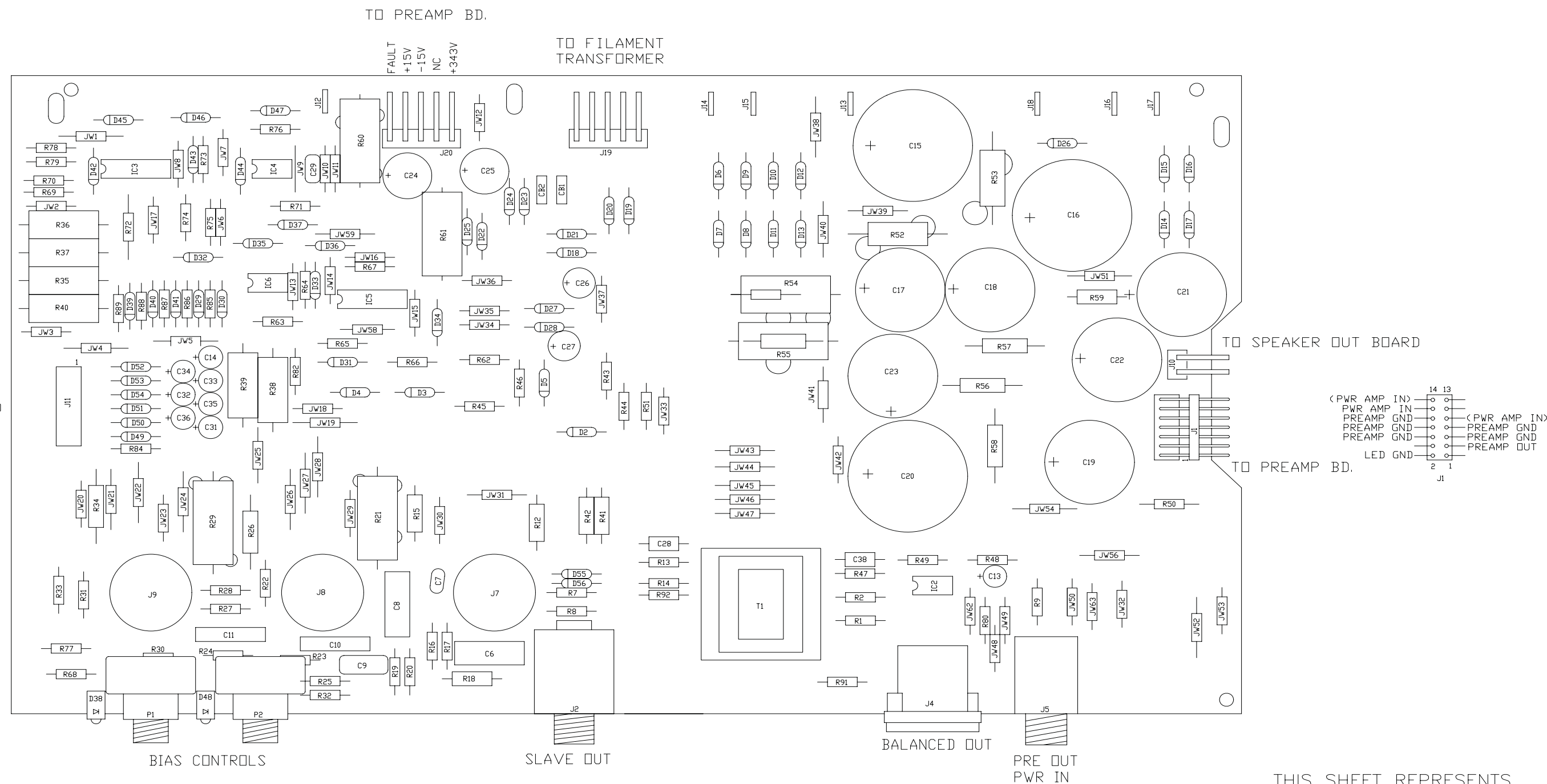
TO ADJUST BIAS:

ALLOW UNIT TO WARM UP FOR 20 MINUTES.
 ADJUST BIAS CONTROLS SO THAT ONLY THE GREEN LEDS
 ARE LIT. FOR UNMATCHED TUBES THIS CONDITION MAY
 NOT BE ABLE TO BE MET. IF SO ADJUST CONTROLS
 SO THAT ONLY THE RED LEDS ARE LIT. SEE THE OWNER'S
 MANUAL FOR TROUBLESHOOTING TIPS USING THE BIAS
 CONTROLS AND LEDS.

THIS DRAWING SUPERSEDES 07-419-03/11

PART NO. IS 07-419-04


B	7-28-00	CHANGED PARTS LIST	D000685	RLB		
A	4-11-00	INITIAL ISSUE	D000624			
REV:	DATE:	DESCRIPTION	ECR/ECN NO:	CHNG'D BY:	APPR'D BY:	DATE:
THE INFORMATION CONTAINED ON THIS DRAWING IS PROPRIETARY TO ST. LOUIS MUSIC, INC.						
SIGNATURES:		DATE:		11880 Borman Dr. St. Louis, Missouri 63146		
DRAWN: RLB		12-22-99		FIRST USED ON: SVT-2PRO		
CHK'D:				DRAWING TITLE: PWA, POWER AMP		
RLS'D:				DRAWING NO.: 07-419-XX		
TOLERANCES:		DRAWING SIZE: C		SCALE: 1:1 SHEET: 1 OF 4		
		DRAWING TYPE: ASSEMBLY				
		CLASS CODE:				



TO ADJUST BIAS:

ALLOW UNIT TO WARM UP FOR 20 MINUTES.
 ADJUST BIAS CONTROLS SO THAT ONLY THE GREEN LEDS
 ARE LIT. FOR UNMATCHED TUBES THIS CONDITION MAY
 NOT BE ABLE TO BE MET. IF SO ADJUST CONTROLS
 SO THAT ONLY THE RED LEDS ARE LIT. SEE THE OWNER'S
 MANUAL FOR TROUBLESHOOTING TIPS USING THE BIAS
 CONTROLS AND LEDS.

THIS SHEET REPRESENTS
 PART NO. 07-419-12

B	7-28-00	CHANGED PARTS LIST	D000685	RLB		
A	4-11-00	INITIAL ISSUE	D000624			
REV:	DATE:	DESCRIPTION	ECR/ECN NO:	CHNG'D BY:	APPR'D BY:	DATE:
THE INFORMATION CONTAINED ON THIS DRAWING IS PROPRIETARY TO ST. LOUIS MUSIC, INC.						
SIGNATURES:		DATE:		 11880 Borman Dr. St. Louis, Missouri 63146		
DRAWN: RLB		12-22-99		FIRST USED ON: SVT-2PRO		
CHK'D:				DRAWING TITLE: PWA, POWER AMP		
RLS'D:				DRAWING NO.: 07-419-XX		
TOLERANCES:		DRAWING SIZE: C		SCALE: 1:1 SHEET: 3 OF 4		
		DRAWING TYPE: ASSEMBLY				
		CLASS CODE:				

